

THE SPEEN & NORTH DEAN *News*



Spring 2025

Issue 92

simply beautiful gardens

Alchemille has been designing and creating beautiful, innovative, inspirational outdoor spaces since 2004.

From urban courtyards to country estate gardens, we can make the simply beautiful garden of your dreams a reality.

FROM CONCEPT
TO CREATION



Image courtesy
of T Pottinger

01494 488072 • 07909 936718 • design@alchemille.co.uk

www.alchemille.co.uk



Get smart in your garden

From comprehensive plant care advice, to regular maintenance or a one-off project, our experienced team is ready to smarten up **your** garden.

For more information contact
Andy Merriman on

07827 290770



Working in association with Alchemille Garden Design

Welcome!

Welcome to the Spring Edition of the Speen & North Dean News, as we welcome back the sunshine after a soggy winter.

With summer fast approaching, we can look forward to many local events, details of which are promoted inside this edition. Now is also the time to spruce up your garden and enjoy being outside.

Did you know that two of our advertisers, AVS and Briants, are offering readers a discount on garden equipment and supplies? Please have a look at their adverts inside the magazine for details.

As always, we are extremely grateful to all our advertisers for their continued support.

Best Wishes

Jill Roberts

*Front Cover Photo by Paul Rogerson
Snowdrop Corner Studridge Lane Speen*

Contents

Welcome	3
What's On	5
Parish Council	5
Speen School & Little Apples Preschool	7
Speen School PTA	9
Speen Festival 2025	9
Defibrillator Renewal	11
Welsh Cakes	11
In Remembrance	12, 13 & 15
North Dean News	15 & 17
Lacey Green Parish Council	18
St John's Parish Church Dates	19
Recipe	39
Speen Village Hall	20
Speen Church	21
Christmas in Speen & North Dean	22 & 23
Speen WI	25
Speen Fete	27
Speen Helping Hospices	29
Wildlife Watch	31
Book Review	31
Darvills Hill Farm	33
Speen Heritage Group	35
Elliot Wengler	37
SEAG	38 & 39
West Wycombe Art Group	40
Speen Tennis Club	41
Who's Who	42

SPEEN & NORTH DEAN NEWS COMMITTEE

JILL ROGERSON (CHAIRMAN), TOM DENT (ADVERTISING/TREASURER), JILL ROBERTS (EDITOR), CHRISTINE RYMAN (NORTH DEAN)

Next Edition

Copy for the next edition is due by 18th July 2025 with a planned publication date of early August. Please send photos separately from text, together with captions and a consent form (downloaded from the SNDN website www.speenbucks.org.uk) if any photos are of children. Please send to editor.sndn@speenbucks.org.uk.

With grateful thanks

To all our advertisers for their support of this magazine and to all the volunteers who deliver it to your door.

List of Advertisers

Alchemille Garden Design, Andy Ellis Tree Surgery, Ashridge Home Care, AVS Fencing and Landscaping Supplies, Beechdean Farmhouse Dairy Ice Cream, Briants of Risborough Ltd, Buckmoorend Farm Shop and Kitchen, Deluxe Roofing, CG Tree & Garden Services, Fine & Country, Hampden Arms, Hypnos Beds, Leighton Heating and Plumbing, Lovell Fuels, Manor Garage, MR Collins, Nick Higgins Forestry and Fencing, North Dean Village Hall, Plugs Electrical, Oxmoor Farm, Retsof Design, Rowena's Therapies, Speen Pilates, St John's Lacey Green, The Harrow Pub, These Four Walls, Timpsons Butchers, Village Environmental Services, West Wycombe Art Exhibition.

www.speenbucks.co.uk

Welcome Packs

The Good Neighbours scheme was set up many years ago and is now run by Pat Richardson in Speen. The service is to provide new Speen residents with a Welcome Pack of village information, so if you know of anyone new to the area please call Pat Richardson on 01494 488627.

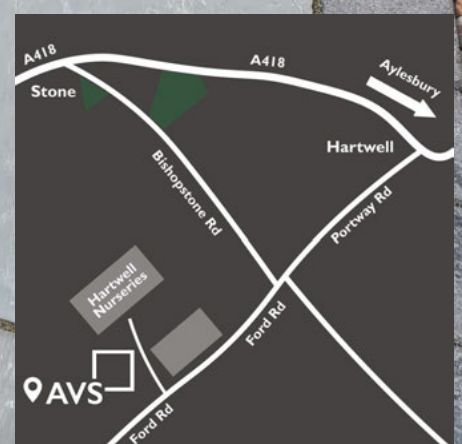
Village News

If you are not already signed up to The Village Messenger do email Village@SpeenBucks.org to be put on the mailing list, with the word 'include' in the subject line - they will keep you up to date via email on a monthly basis with all the latest village news and important dates.

If you use the services of any of our advertisers please do mention that you saw their ad in The Speen & North Dean News

**FENCING | GATES | PAVING | DECKING | SLEEPERS
DECORATIVE STONE | BUILDING SUPPLIES**

10% OFF
YOUR FIRST ORDER
OVER £150
PLUS FREE DELIVERY*



Open Monday to Friday 7.00am to 5.00pm Saturday 8.00am to 12.00pm

Hartwell Nurseries | Ford Road | Stone | Aylesbury | HP17 8RZ

☎ 01296 747048 📧 branchaylesbury@avsfencing.co.uk 🌐 avsfencing.co.uk

* Present this ad in branch to redeem - new customers only, £150 ex VAT minimum spend, offer for in-branch orders only, ends 28/2/2025, delivery within 30 miles of branch. Offer may be withdrawn at any time if abused.

WHAT'S ON

in Speen & North Dean

REGULAR EVENTS

Sundays	Regular Service of Worship	Speen Chapel 10.30am	Speen Church 488 753 pastor@speenchurch.uk
Tuesdays Term Time Only	Speen & North Dean Tiddlers & Toddlers	Speen Chapel Hall 9.30-11.30am	speen-northdeantoddlers@gmail.com
3rd Thursday of each month	Memory Cafe	Speen Chapel Hall 10.00 - 12.00	trudi@ashridgehomecare.co.uk
1st & 3rd Sundays	BCP Holy Communion	St John's Parish Church, Lacey Green 8.00am	tony.bundock49@gmail.com
Tuesdays	Said Communion (Common Worship)	St John's Parish Church, Lacey Green 9.30am	
Sundays (1st Sunday All Ages)	Parish Communion with Hymns	St John's Parish Church, Lacey Green 10.00am	

APRIL

Thurs 17th	Memory Cafe	Speen Chapel Hall 10:00 - 12:00 pm	trudi@ashridgehomecare.co.uk
------------	-------------	------------------------------------	------------------------------

MAY

Thurs 1st	Local Government Elections	7:00 - 22:00 pm Speen Village Hall	
Date tbc	Speen & North Dean Bi-Annual Golf Match		Richard Pooley 07785996511
Thurs 1st	Speen WI Pots & Baskets	Speen Chapel Hall 7:30 pm	Jenny Pearce 07305188093
Wed 7th	SHH Ladies Spring Lunch	The Horse Trust Speen	(Sold out)
Thurs 15th	Memory Cafe	Speen Chapel Hall 10:00 - 12:00 pm	trudi@ashridgehomecare.co.uk

JUNE

Thurs 5th	WI Meeting Man on the Spot. Reflections on 50 years as a journalist	Speen Village Hall 7:30 pm	Jenny Pearce 07305188093
Sat 14th	Speen School Ball 2025		Details to follow
Thurs 19th	Memory Cafe	Speen Chapel Hall 10:12 pm	trudi@ashridgehomecare.co.uk
Sat 28th - Sun 6th July	St John's 200th Anniversary Events	See Page 21 for further details.	

JULY

Sat 12th	Speen Fete	Speen Playing Fields	Details to follow
----------	------------	----------------------	-------------------

AUG

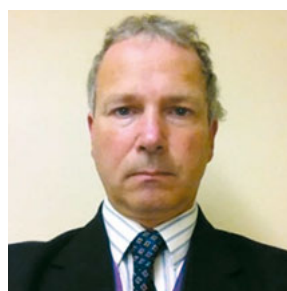
Sat 30th - Sun 14th	Speen Festival	Speen Playing Fields and various locations.	Details to follow
---------------------	----------------	---	-------------------

PARISH COUNCIL

Hughenden Parish Council Election 2025

Simon Kearey – father of two, living in Wycombe District for the last 22 year. Worked for the BBC for a long time, latterly for a local authority and in more recent times the NHS. In my spare time I support a number of charitable organisations in making things happen.

I want to ensure that all the communities of Wycombe and the surrounding area are well supported ensuring that there are opportunities for all in order to lead fulfilling lives. I am keen to support



local talent of which there is so much and ensure that excellent services are provided for all.

I am particularly keen to support developing local businesses as this is an excellent way to not only bring communities together but to also build on the work of local groups through collaboration and partnerships. I would aim to ensure that Hughenden Parish Council for all the parishioners it covers, does exactly that and makes a massively positive impact on people's lives.

Briants



GARDEN, FORESTRY & FENCING SUPPLIES

**LAWNMOWERS & GARDEN MACHINERY
FENCING, LANDSCAPING & GARDENING SUPPLIES**

STIHL

HAYTER
MAKERS OF THE FINEST MOWERS

HONDA
Lawn & Garden

10% OFF
YOUR FIRST ORDER OF
FENCING OR LANDSCAPING
SUPPLIES OVER £150
PLUS FREE DELIVERY*
(excludes machinery)

Open Monday to Friday 8.00am to 5.00pm

Green Close Works | Thame Road | Longwick | Princes Risborough | HP27 9SG

☎ 01844 343663 📧 info@briantsonline.co.uk 📞 briantsofrisborough.co.uk

* Present this ad in branch to redeem - new customers only, £150 ex VAT minimum spend on fencing or landscaping supplies, excludes machinery, offer for in-branch orders only, ends 28/2/2025, delivery within 30 miles of branch. Offer may be withdrawn at any time if abused.

SPEEN SCHOOL & LITTLE APPLES PRESCHOOL

Lisa Davies



We have been having a very exciting time at Speen School! The children have been working extremely hard and having lots of fun along the way.



Our love of books has been a huge focus with our World Book Day Celebrations. We all dressed up as our favourite book characters, designed book covers, listened to mystery readers and took part in a sponsored read.



We have also welcomed the wonderful guest author, Lou Treleven, into school who shared a number of her stories with us. She also put on a play with the help of one of our wonderful teachers! We were very inspired so we all wrote our own stories which was great fun to share with all of our friends!

We are very proud of our Eco-Flag status and our Eco Council arranged a whole school litter pick for the playing fields and skate park. We collected 6 full sacks of rubbish!

In our forest school sessions, we have been making dens and thinking about making different bird houses to support the wildlife on the school grounds.



Our love of the outside was also reflected in our Shrove Tuesday celebrations. As part of our forest schools programme, we made pancakes on the camp fire, they were delicious! With the left-over pancakes we had pancake races in the playground. It was so much fun!



THE HARROW

Serving great food 7 days a week



YOUR LOCAL, FAMILY AND DOG FRIENDLY PUB
SERVING DELICIOUS, FRESHLY PREPARED FOOD,
LOCALLY SOURCED REAL ALES
AND A GOOD SELECTION OF WINES



FOOD SERVED:
MONDAY-SATURDAY : 12NOON-9PM
SUNDAY : 12NOON-5PM



QUIZ NIGHT TUESDAY 8PM

*There's always something going on at The Harrow Pub,
so get yourself down here
and enjoy the beer, the entertainment and the company.*

01494 564105

WARRENDENE ROAD, HUGHENDEN VALLEY, HIGH WYCOMBE HP14 4LX

WWW.HARROWHUGHENDEN.CO.UK

Spring Term News from Speen School PTA

A huge thank you to everyone for your continued support of Speen School PTA. In March we held the very popular Safari Supper event. Once again, it was a very successful evening. It's a lovely event and a great social night for school families and villagers. Again, thank you to the many villagers who hosted and attended this event. We hope you all enjoyed it.

We run a number of regular events now throughout the year. In December we had our annual Christmas Fair which raised almost £1,300 profit. Again a big thank you to the many people who donated items to this event. The children really love this event and appreciated all the lovely toys and games available.

As well as the Christmas Fair, we also ran another popular wreath making course in the school hall

with the help of Helen Davies, which raised over £250 profit. Overall, we had a very successful December. This year we are planning to support the school with a refresh to the library including some much needed shelving for the children's library. We would also like to fund additional playground equipment.



We have some lovely events planned for the children this term. The children will be taking part in an Easter Egg hunt during the last week of term as well as an Easter Bonnet competition and a disco..

In June we hold one of our biggest fundraisers The Speen Village Ball. We have a very exciting night planned and really hope many of you can join in this fun event. Tickets will be available to purchase soon. Please see the updated Save the Date alongside.



Save the Date: Saturday 30th August to Sunday 14th September 2025

Survival Night, Pub Quiz, Annie the Musical, Wine and Painting, Art Exhibition, a last night gig and party ... and much, much more!

Speen Festival is a biannual unique and eclectic collection of events that celebrates art and creativity in the Chilterns. Kindly sponsored again this year by Dennis Cook of Village Environmental Services, our calendar of events has been carefully designed to appeal to people of all ages.

To deliver a successful festival depends upon people stepping forward to volunteer their time. Whether that's helping to set chairs and tables,

serving drinks at the bar, supporting the sound and lighting, putting up the marquee, coordinating the car parking or welcoming people to events, we now need YOU!

However much time you can give over the two weeks of the festival will be very much welcomed. It's a great way to meet people if you are new to the village and it's great fun!

Please contact Liz Patroe, Festival Coordinator at lizpatroe@gmail.com or on 07976 329953.

Follow us on Instagram @speenfestival and visit our website for more information:
www.speenfestival.org



THE HAMPDEN ARMS

Bar & Restaurant

Real Ales
Extensive Wine List

Good Food
A la carte, blackboard specials,
snacks and Sunday roasts

Beautiful Rural Setting
Large secure beer garden, car park
and on circular pub walk route

Great Hampden, Buckinghamshire HP16 9RQ

t: 01494 488255

e: louise.lucas@outlook.com

www.thehampdenarms.co.uk

Pub open 7 days a week
Food served every day for lunch and dinner
(except Tuesdays)

SERVICES

Sundays
10.00am

1st and 3rd Sundays
also at 8.00am

Tuesdays
9.30am



VILLAGE ENVIRONMENTAL SERVICES DOMESTIC DRAIN SERVICES

Proprietor: Dennis Cook
Est. 1979

BLOCKED DRAINS?

FAMILY RUN BUSINESS SINCE 1979

BLOCKED DRAINS CLEARED

REASONABLE RATES

CCTV DRAIN SURVEYS

NO EXTRA CHARGE FOR EVENING, WEEKEND OR BANK HOLIDAY CALLOUTS

FULL PUBLIC LIABILITY INSURANCE

CALL US DAY OR NIGHT

24/7
CALLOUT
SERVICE

07850 635 844 01296 624 221 (MESSAGES)



DEFIBRILLATORRENEWAL



The Rural Community Defibrillator Group The Cabinet Renewal Project

by Mark Tubbs, Chairman, RCDG



Since 2014 RCDG has been working to provide Public Access Defibrillators in rural locations, in and around Princes Risborough. To date we have 31 sites installed where none previously existed.

Recently we have become increasingly aware that the early metal cabinets have been causing faults to occur with the electrical supply to an extent where a few had to be taken off the 999 register.

The solution was to remove all 10 of these and replace them with the later plastic cabinets at a cost of some £5000. This has only been possible with the help of the North West Chilterns Community



Board (part of Buckinghamshire Council) and local Parishes who have generously donated towards the cost of the installations.

We were therefore extremely grateful to everyone for their help towards funding for this endeavour which enabled all 10 to be replaced and reinstated on to the 999 register.

Speen has benefitted from this with the defibrillator located

outside Speen Stores being replaced.

Our thanks go again to the North West Chilterns Community Board and the local Councillors who supported this work.

WELSHCAKES

by Pauline Flynn

Sadly, Pauline passed away, her obituary is printed on page 13 of this newsletter but her Welsh Cakes will live on in her memory, so it seems appropriate to share her recipe.

200g plain flour	100g butter
75g caster sugar	50g currants
1 egg	1.5 tablespoons milk
Pinch salt	

Mix flour, salt, butter until like breadcrumbs. Mix in other dry ingredients, add the milk and egg. Using a fork mix to a dough.

Turn onto floured board, roll to ½ inch thickness and cut out rounds. Wipe a pan with butter paper and cook on medium heat for about 5 mins each side. Turn out onto a plate and sprinkle with caster sugar. Best eaten warm with a cup of tea.



BUTCHERS - TIMPSONS -

We are a small catering butcher who visit the market daily to ensure we supply high quality, fresh produce and try to source locally where possible.

We also offer a range of fresh meat, eggs, cheese, bread and cakes.

Our shop is open
Tuesday – Saturday from 9am until 4pm
Unit 6, Ministry Wharf, Saunderton HP14 3XA

We also offer FREE local delivery!

www.timpsonssmallholding.co.uk



INREMEMBRANCE

JO BANKS

16th February 1935 – 11th February 2025

By Sue Taylor and Christopher Boyce

Josephine Banks (née Seyfried) – ‘Jo’ to all her friends in Speen – died peacefully at home on 11th February 2025, just days short of her 90th birthday.

Jo was without doubt ‘a woman of many parts’ – outwardly, leading a quiet life in a small Chilterns village. But she was also someone who travelled abroad, flew long-distance alone, and worked in many differing roles. In her local community, Jo’s impact was huge.

As a child in south-west London Jo learned horse riding. Her father was a keen motor cyclist and Jo recalled riding pillion – a pointer to her adult passion for motor sports. Jo married and lived for some years in apartheid South Africa, an experience she later recalled for a Speen Festival audience. With the break-up of her marriage, she returned to England with her young son Jason. Over her years in Speen, she lived in three different houses – Spennymoor, the (former) White House Lodge, and lastly Jasmine.

Jo’s working life was busy and varied. Unconventionally, she was a motor racing membership steward and developed an enduring love of the sport. She was also a nursery teacher, hotel owner, kitchen helper at the King William IV, and cared for her mother and sister as well as elderly neighbours. WhatsApp tributes following her death illustrate just how many families relied on Jo for ironing, house-sitting, child-minding, and looking after pets. As a ready volunteer in the community, Jo organised games at Speen Fête and distributed the Speen and North Dean News.

Jo’s strong personality, her sense of humour, ‘no nonsense’ attitude and independent spirit doubtless helped her through challenging times. A proud Mensa member, she possessed a sharp intelligence and quick wit and loved engaging in banter and



repartee (sometimes laced with wicked innuendo). She hated fuss of any kind: the village celebration for her 80th birthday was planned in great secrecy (see SNDN no. 62), with Jo making an entrance once all the guests were assembled. Thankfully for her friends, she was delighted with the attention showered on her that day.

Her special ‘likes’ included: tea and chat, pub quizzes, visits to Speen

Stores, trips on ‘the little green bus’, birds (notably owls), animals, word puzzles, and sitting on a bench to natter with neighbours (especially those with dogs). She looked forward eagerly to her twice-yearly trips to America, to visit Jason and his family.

Watching sport on TV, especially football, was Jo’s greatest passion and she was, with Jason, a long-time Liverpool fan. She also followed darts, snooker, golf, and ski championships.

Later in life, Alzheimer’s and arthritis gradually limited Jo’s activities. Nevertheless, her strong desire for company and connections (more tea and chat) remained strong. When housebound, Jo loved to stand at her gate or threshold, waving energetically to departing visitors until they disappeared. Jason’s telephone calls from America were a daily comfort, and visits to the Princes Centre, aided by volunteer drivers in Speen, were highlights of her week. Ashridge Home Care carefully tailored their support, enabling Jo to remain in her home.

A familiar and well-loved personality, Jo leaves a big gap in Speen and will be greatly missed. For her 80th birthday party, friends designed and made a banner bearing the Liverpool FC motto ‘You’ll Never Walk Alone’, which Jo displayed prominently in her home thereafter. That motto says much about Jo’s willingness to befriend and help others, and about the warmth and support she drew from the village during her long life.



INREMEMBRANCE

PAULINE FLYNN

1942 – 2025

By Pauline's Family

Pauline Gould was born near Shrewsbury in 1942, on April Fool's Day, a date she'd wear as a badge of honour. Her family's roots were in South Wales, her father was relocated to Liverpool as part of the war effort from where they were evacuated to a farm where Pauline was born.

After the war the family moved back to South Wales. It was here that she met her first lifelong friend. Friendship was one of her greatest qualities, many of which spanned multiple decades. Once she'd won you over, she'd never let you go.

After leaving school her first job was in a glove factory and then as a cashier at the Bank. She met Ray at the local dance, they were married in 1962. Money was very tight, which brought out her second biggest quality – her selflessness. She would always put those she loved and cared for before herself.

In 1963 Pauline became a mother to Nathan, motherhood was just in her nature. Nadine and Cathy followed, by which time the family lived in Maidenhead. While living here she became a Samaritan, another example of her selflessness, empathy and open willingness to help those in need.

By the mid-seventies the family had moved to the Chilterns. This became her final home living here for fifty years, a place where she felt she belonged. She worked in the local shop and then the infant school, where she met another lifelong friend who would be become her antiques buddy, starting her buying and selling paying hobby.

As the family grew up, she started working in the NHS first as a ward clerk at Wycombe hospital then as a receptionist at the local GP surgery, a job where she excelled due to her kind nature.

The early eighties were probably the darkest years of Pauline's life, her marriage to Ray had become untenable, and inevitably they parted company. She moved to Prestwood, where she became independent and happier in life.

At the end of '86 she met David Flynn.... a perfect and loving relationship had formed that was



unbreakable. Together they moved to Abbotswood Speen in '89 and were married from here in '91. They retired to Cottage Farm Waye in 1996.

David shared many of Pauline's passions for helping others and together they supported the local village, Rotary, and even sleeping overnight with homeless people at Christmas, helping to feed and comfort those with very little else in their lives.

They shared a great passion for travel.... long holidays in America, Canada, South Africa, Australia, New Zealand, the Galapagos Islands, Russia and China, and of course most of Europe. They had a share in a chalet in Switzerland that produced many happy holidays, especially with the future grandchildren.

As the nineties rolled, and a few family weddings later, the millennials and Gen Zs started to arrive. Becoming a grandmother was an amazing time as she showered her love and kindness on them all.

Activities.... Especially clubs.... not sure if this is a Welsh thing but she loved clubs. Book clubs, bridge club, WI, art and antiques clubs to name but a few. She loved them because it gave her the opportunity to meet new friends, have new experiences and fun.

Sadly, David passed in 2019, something Pauline struggled with, missing him so much. She continued to spend time with family and friends and kept up her travels including a solo trip to India two years ago.

Pauline will be remembered for many things, her generosity of giving to others, her selflessness, her smile, her unconditional love and remarkable steadfast friendships. She will of course also be remembered dearly for her delicious Welsh Cakes (page 11).

Unfortunately, Pauline became poorly in early 2025, and after a short spell in hospital her family with the support of Rennie Groves Peace were able to care for her at home until she passed peacefully a month later.

Her family will miss her dearly, but the memories that are left behind are all truly happy ones that will never leave them.

Keep This Number Handy
You May Need It To Contact...

YOUR LOCAL
ELECTRICIAN

Call Tony on 07944 162958

Email Tony@plugs.me.uk

- Qualified Electrician
- Reliable Service
- Free Quotes
- Honest Assessment
- Quick Response
- Reasonably Priced
- Tidy Work
- Insured
- Warranty Backed
- Certificates Issued

plugs 



DELUXE ROOFING
CONTRACTORS & SUPPLIERS LTD

We specialise in:

- Roof tiling
- Lead work
- Single ply roofing, Sarnafil
- Green (sedum) roofing
- Flat roofs
- Re-tiling and slating

Office: **01494 716184**

John Mulry's Mobile: **07860 845343**

Email: john@deluxeroofing.co.uk

Binders Industrial Estate, Cryers Hill
High Wycombe, Bucks HP15 6LJ

www.deluxeroofing.co.uk

Buckinghamshire's trusted roofing contractor



Manor Garage



MOT Testing



Diagnostics



Servicing



Air Conditioning



Repairs



Tyres - Exhausts - Batteries



Electric & Hybrid Vehicles



01494 564222



dnaautos243@outlook.com

INREMEMBRANCE

JOHN BISHOP

15th January 1945 – 17th March 2025

By Cindy Bishop

John Bishop was born 15th January 1945 in Amersham.

He grew up and trained to be a brilliant mechanic, which was his career for most of his life.

John met his wife to be Cindy in their teens, and they, along with Cindy's sister Jo Hall and her husband Leslie Hall bought No.1 & 2 Margaret Cottages in 1967.

John married Cindy in 1968 at the church in Old Amersham, and that was the start of their beautiful family life.

John had recently started up his own garden machinery business in Amersham, which he continued in his workshop at the family home, retiring only a few years ago.

John had a racy life, riding speedway for the Oxford Cheetahs, Newport, Swindon, and Wimbledon, and was lucky enough to ride speedway AND perform with his band at the Old Wembley Stadium.



John had started to play bass guitar, lead guitar and later keyboards and vocals in many local bands including The Alligators and The Wedge.

Cindy fondly remembers an occasion when they first moved into North Dean... she says, "One morning John and I were standing at the kitchen sink, and we heard what we thought was a steam train coming down Piggotts Hill.

When we went out to investigate, there was a green steam powered car coming down the lane, driven by a neighbour, wearing a leather cap, goggles, and a scarf, booping his whistle and shouting "Good Morning!" John turned to Cindy and said, "I think I'm going to like living here!" And that is exactly where he has lived until his passing at the family home on 17th March 2025 aged 80.

John leaves behind, along with his wife Cindy, daughters Amee and Zoe, many friends and relations.

He will be greatly missed.



NORTH DEAN NEWS

Christmas Carols at North Dean Village Hall

by Jeremy Mudie

The villagers of North Dean turned out in force for the annual singing of Christmas Carols at North Dean Village Hall on the Friday before Christmas. The occasion gave everyone assembled the opportunity to celebrate the beginning of the festive season and to sing to their hearts' content their favourite Carols under the guidance of our Master of Ceremonies for the evening, Nick Howard.

The hall played its part in putting everyone into the Christmas spirit having been beautifully decorated.



Apart from the wonderful tree, the hall was festooned with Christmas lights, both inside and out. Congratulations to the village hall committee for making the hall look so inviting for the occasion.

During what was a most convivial evening, mulled wine and mince pies were enjoyed by all.

It was lovely to see so many of the village present at this annual event. Your support is greatly appreciated, and we hope to see you all at other upcoming events in the village during 2025.

A. ELLIS

Tree Surgery

Fully Qualified and Insured Tree Surgeons



We undertake all aspects of
hedge trimming and
tree surgery

For a free, no obligation
quote please contact us

T: 01494 817234 M: 07709 491589

E: info@aellistrees.com

www.aellistrees.com

For fencing enquiries call Mike on:

T: 01494 868466

Jane Vowles

I am still on a cloud! Even though 18th/19th December gets further away each day it was a very special time for me. My horse had qualified for the London International Horse Show (ex-Olympia) and he and I competed there!

You may have seen me riding my horse around Speen and North Dean. Having had grey horses for many years, he is dark brown and called Jacob. He came to me via a great friend, who knew his breeders and should have gone racing but was not good enough, so became an ordinary riding horse looking for a home. My friend knew I was on the look out for a hunter so Jacob arrived from Somerset as a gangly five-year-old with little education except running in straight lines – my girls, Hannah and Amy, were horrified that, at my age (!), I was taking on an unruly race horse instead of a quiet plod that they would have preferred I rode. No chance!

I hunted Jacob alongside my other horse for two seasons, then was laid off after a fall, so the horses had a six-month holiday while I recovered. The other horse was then sold, which left Jacob at home with me. My unruly youngster then began the transformation into a very friendly, co-operative and kind chap, whom I have become very fond of. However, the best was yet to come!

I was persuaded to take him showing – that's rather like a beauty contest for horses! He did rather well, and last summer he won 17 rosettes at 9 shows, including qualifying for the London International Horse Show which I was coerced into entering (what was I doing? I was much too old to be competing against top class horses and their young riders!).

After months of preparation - mental and physical for both of us, gallons of shampoo and endless fitness and muscle building work up and down our hills we were ready. Packing the trailer for our three days at the ExCel Centre in Docklands was worse than a 1000-piece jigsaw, but Hannah made it all fit and on the Tuesday before Christmas off we went to inner London, with a horse!! Bonkers behaviour but hey! the adventure had started.

On arrival on the Tuesday evening, we unloaded Jacob and all his stuff into the indoor stabling, and then didn't see daylight until Friday morning! Everything about the Show was indoors and very warm, unlike outside the ExCell Centre. The atmosphere was electric, everyone was very friendly and all of us were excited



and nervous. Jacob however was very relaxed and seemed quite happy to be there.

Our first class was the Riding Horse Type on Wednesday, and we were able to ride in the arena early in the morning before the classes started to familiarise the horses with the ring, the Christmas trees, reindeer, lights, music etc etc. Our class was in the afternoon, and after endless pampering and preparation we were called forward to the ring. Jacob was so good, with all sorts of unusual things to look at as well as 20 other horses in the arena. He behaved brilliantly and was very obedient, but a sat-nav error on my part in our individual show meant I messed up our direction of travel and jumped a Christmas tree – well, he loves his jumping! We didn't get a place but we were awarded the Healthiest Body Condition prize which is given by the Horse Trust at Speen, so that was worth all the hill work in preparation!

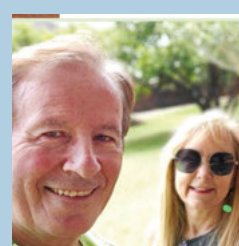
The following day we competed in the Racehorse to Show Horse class. Again, there was much pampering and primping beforehand, then we were called forward. Again, Jacob took it all in his stride and seemed to be having a lovely time, almost smiling! He behaved impeccably, and was initially pulled into 4th place out of 21 horses. This time we managed to give a foot perfect individual show, and I am thrilled to say Jacob was pulled up in to 3rd place!



3RD PLACE!! What a star he was! How could that happen? My scrawny racehorse had turned into a beautiful swan and we had competed at one of the most prodigious shows on the circuit – oh my goodness, pinch me hard. Hannah kindly pointed out that I could be a Grandma to most of the other competitors but I say Bring It On! What's age but a number?

Huge respect for my lovely, and now very precious horse, Jacob (stage name Larrigan), and huge thanks to Hannah for being the best helper. Amy and even Mick came to watch! A true family pre-Christmas treat!

Huge congratulations to our Sharon & Martin's engagement, wonderful news indeed, we are all thrilled for our long time North Dean residents of Cournswood House. We all wish you a wonderfully happy engagement period.





LACEY GREEN
PARISH COUNCIL

Parish Council Elections 2025

Roger Craft and Philip Suter – Councillors

Council elections for Buckinghamshire Council, Hughenden Parish Council (for North Dean residents) and Lacey Green Parish Council (for Speen residents) takes place on Thursday 1 May.

Lacey Green Parish Council (LGPC) has currently a total of 7 Parish Councillors members - 2 representing Speen, 4 representing Lacey Green and 1 representing Loosley Row. The Parish Councillors are elected every 4 years and the current terms of office of the existing Parish Councillors finish at the end of April this year and elections of new Councillors are due on 1st May 2025.

Roger Craft and Philip Suter are currently the LGPC councillors representing the village of Speen Ward. Roger has served in excess of 20 years as a Parish councillor representing Speen, as well as being Vice Chair for a number of years. Philip has represented Speen as a Parish Councillor for the last ten years.

Whereas Philip has expressed his desire to continue as a LGPC Councillor and will be seeking re-election, Roger after a long period of service has decided to step down and will not be standing for re-selection. As such, there will be a vacancy for people to put themselves forward for consideration as a Parish Councillor representing the Speen ward. Application Forms supported by a proposer and seconder for consideration to stand in the forthcoming elections on 1st May 2025 need to be submitted to the local election office between 10 am on Tuesday 18th March and 4pm on Wednesday 2nd April 2025.

Being a Parish Councillor is a very satisfying voluntary role representing the local community and overseeing maintenance of local assets and planning applications, as well as assisting and providing advice for the local community wherever possible and awarding various grants when applied for.

Parish Councillors are also involved with Speedwatch and traffic calming campaigns, organising speed monitoring equipment, arranging appropriate signage by the side of the roads at village entrances

and the painted speed limits on the roads by liaising with Buckinghamshire Council. A councillor must also notify Buckinghamshire Council whenever street signs need replacing and organising designated public area grass maintenance.

A Parish Councillor will also be involved with organising the benches/seats around the Parish, bus shelters and notice boards and the Parish Garden of Remembrance and Cemetery.

The Parish Council also keeps a watching brief over the general appearance of the local environment and surroundings, liaising with the Buckinghamshire Unitary authority and other interested parties to ensure that our local surroundings can be enjoyed by all residents, their visitors and, indeed, all other visitors to the area.

Lacey Green Parish Council is an apolitical Parish Council. The Parish Council meets once monthly (with exception of August). Meetings are held in Speen and Lacey Green on a Monday evening.

It is a wide and satisfying role and Lacey Green Parish Council look forward to welcoming new members.

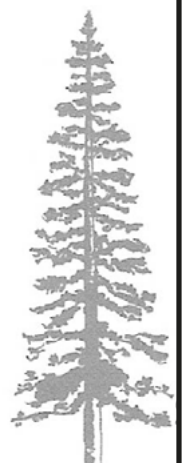
If you are interested in understanding what is involved and want further details on how to apply etc. please contact in the first instance the clerk of Lacey Green Parish Council, Frank Post, by email - clerk@laceygreen-pc.org.uk

**Nick Higgins
Forestry & Fencing
Contractor**

**m. 07768 383418
t. 01494 488835**

45 Great Hampden
Bucks
HP16 9RJ

Seasoned logs
available



Save the Date A week of events to celebrate:

**THE 200TH ANNIVERSARY OF
ST. JOHN'S CHURCH, LACEY GREEN,
LOOSLEY ROW and SPEEN**

Sat. 28th June Beating the Bounds

An opportunity to walk all or part of the 11 mile circumference of the Parish.

Sun 29th June 10.00am Church Service

Sun.29th June 3.00pm Songs of Praise

Tues 1st & Friday 4th July

Tours of History and Flower displays in Church

Wed 2nd July Pageant by St. John's School

Thurs 3rd July 7.30pm Celebratory Evensong

Sat 5th July 3.00pm

Organ Concert performed by Alastair and Gilly Ross

Sun 6th July 10.00am Church Service,

Sun 6th July Bring and share lunch.

More information: Rosemary johnmortham@btinternet.com

Canon Tony tony.bundock49@gmail.com



**Parish Church of Saint John the Evangelist
Lacey Green, Loosley Row & Speen**

**PASSIONTIDE, HOLY WEEK AND EASTER
April 2025**

April 6th 8.00am 10.00am 3.00pm	PASSION SUNDAY (FIFTH SUNDAY OF LENT) Holy Communion (BCP) Parish Communion with Hymns Bereavement Service
13th 10.00am	PALM SUNDAY Parish Communion with Liturgy of the Palms
14th 7.00pm	Monday of Holy Week Compline with Meditation
15th 9.30am 7.00pm	Tuesday of Holy Week Holy Communion Compline with Meditation
16th 7.00pm	Wednesday of Holy Week Compline with Meditation
17th 7.00pm	MAUNDY THURSDAY Sung Eucharist of the Last Supper followed by stripping of the altar
18th 10.00am 11.00am 2.00pm	GOOD FRIDAY Easter Extravaganza for children (in St. John's School) CTR Service IN PRINCES RISBOROUGH HIGH STREET The Cross of Christ followed by prayers at the Cross in Church Lane
20th 6.00am 8.00am 10.00am 4.00pm	EASTER DAY Churches Together Sunrise Service ON WHITELEAF HILL Holy Communion (BCP) with lighting of the Paschal Candle Family Communion with renewal of Baptismal vows Festal Evensong



RECIPE

Apricot Pastries

by Mandy How

Ingredients

- 420g Tin of apricot halves in syrup
- 320g Ready rolled puff pastry
- 250g Marzipan
- Apricot jam (optional)

Makes 10 Pastries

Method

1. Pour the syrup from a tin of apricots into a saucepan and bring to the boil. After 2-3 mins, when it starts to thicken, remove and cool.
2. Cut the pastry into x10 rectangles.



3. Roll and cut the marzipan so that you have x 10 rectangles that are each slightly smaller than the pastry rectangles and place them on top of the pastry.
4. Place the pastries onto a baking sheet and place sliced or whole apricot halves on top of each marzipan rectangle.
5. Bake in oven 220°C for 15-20 minutes until golden brown.
6. Brush with the syrup as soon as they come out of the oven.

Note: Warmed apricot jam can be used instead of using the syrup as a glaze.

SPEEN VILLAGE HALL

Adrian Farley – Acting Chair Speen Village Hall



The Village Hall as an institution has been a feature of Speen Village Life for over 100 years. However, the structure in which the Village Hall is housed is now over 150 years old. It was originally a Temperance Hall, built in 1874! Naturally the Hall is showing its age and needs a good deal of maintenance and care.

Over the years the Hall has hosted many joyous events, from simple family parties to whole village events, concerts, film nights, pub nights and Fete and Festival events. Village groups have had regular meetings here; Women's Institute, Bridge Club. Yoga and table tennis. We also host for polling at election time, and six times a year Lacey Green Parish Council meetings take place here.

Recently the costs of keeping our Hall going have increased hugely. We rely on bookings from people and organisations for events and meetings for the largest part of our income and these have declined significantly since Covid. We do get welcome income from grants and donations, such as from the Fete and the Festival, but any contributions we receive from central or local government have declined significantly in recent times.

The costs of running the Hall are substantial. Our main regular costs are electricity, for heating and lighting which totals £1,500 per annum (that is after we have included cash from the meters) and insurance which costs us £1,600 per annum. Then there is expenditure on maintenance of the

infrastructure and fabric of the building. Each year, since covid, we have spent approximately £3,000 more than we received in income. This is not sustainable and if we hadn't received covid grants of c£12,000 from central government funds the Hall would be already falling into disrepair.

The upkeep of the hall is managed by a small but dedicated team, without whom it would not be in existence. All make significant contributions but I would like to make special mention of, and thanks to Jeanne Hanford, who has been our dedicated Treasurer for the last 8 years. This year, unfortunately, she has decided to stand down from the role. Therefore, as well as seeking a Chair (I am merely acting) we will also need to find a Treasurer.

So how can our fellow villagers help?

Firstly, please use the Hall. Booking is simple – (contact Sue Taylor on 488500) and we offer excellent rates for Speen folk and organisations. If we don't use the Hall it will just fall down.

Secondly if you feel you can help, please join us, either in one of the roles available or just as a team member. Feel free to contact me.

Finally, if you know of any sources of income we are missing out on or have suggestions for fund raising please let us have your ideas.

If we want to keep our Village Hall going for another century the people of Speen will need to take steps now.

Easter: A Season of Reflection for Believers and Non-Believers Alike

As the daffodils push through the thawing earth and the days grow longer, a season of profound significance approaches. Easter, celebrated with fervour by Christians around the globe. At the heart of Easter lies the biblical narrative of Jesus Christ's resurrection. Easter, therefore, is a celebration of life triumphing over death, light over darkness, a beacon of love, hope and renewal.

For believers, Easter is a time to reconnect with faith through church services, prayer, and meditation on the sacrifice made by Jesus Christ. It's also a call to action, urging Christians to live out their faith through service and compassion. For non-Christians, Easter can



serve as a time for introspection, setting new goals, and fostering connections with those around them.

Easter, with its profound messages of hope, renewal, and love, holds something for everyone. It challenges us to look beyond our differences, to find common ground. This time of year, regardless of one's faith, invites us all to pause, reflect, and embrace the possibility of new beginnings.

As we celebrate this season, may we all take a moment to reflect on our lives, the opportunities for growth and renewal before us, and the ways we can make the world a kinder, more inclusive place.

There is plenty happening at Speen Church this Easter *we look forward to welcoming you:*



Easter Garden

Explore the Easter Story and discover the empty tomb in the Easter Garden in Speen Churchyard open from 02nd April.

Maundy Thursday

Fellowship supper with communion
and reflection 7pm



Good Friday

Family friendly walk through the village
meeting at 10.00am at Chapel Hall followed
by refreshments and hot cross buns



Easter Day

Resurrection Celebration 10.30am

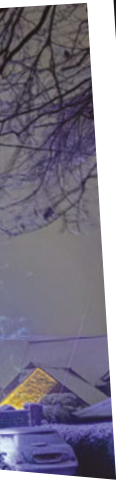
Further details: www.speenchurch.org

www.speenbucks.co.uk

CHRISTMAS IN SPEEN & NORTH DEAN

submitted by local residents





Home is where the heart is



THE BENEFITS OF HOME CARE

For many, the ideal future involves staying in the comfort of home, surrounded by cherished memories and familiar possessions. However, as families become more dispersed and health challenges arise, the thought of moving to a residential care facility can feel like the only option. Fortunately, there's a better solution: home care.

Living at home with personalised professional support is proven to not only promote independence but also enhance emotional well-being. Many people are surprised to learn that this level of care is more accessible than they might think. Whether it's just an hour of assistance each day or round-the-clock live-in care, tailored support can make a significant difference.

Home carers play a vital role in helping individuals maintain their lifestyles, enjoy social interactions, pursue hobbies, and stay connected with beloved pets. With the right support, staying home can lead to a fulfilling and enriching life.

Ashridge Home Care specialises in enabling individuals to remain in their homes by offering a variety of services, including 24-hour live-in care or hourly visits, medication management, personal care, meal preparation, housekeeping, shopping, welfare checks, and companionship. Choose home care and embrace the comfort and joy of living where your heart truly is.

GET IN TOUCH

Telephone Ashridge Home Care for a friendly informal conversation about your situation or help for a loved one on
Tel: 01494 917344

Email care@ashridgehomecare.co.uk
or visit the website for further information
www.ashridgehomecare.co.uk



Through the winter months our members have been meeting to enjoy a variety of social events. At the December meeting the committee provided hot fruit punch and mince pies and members competed in a challenging quiz. The pottery pieces made in November were returned following firing and members were very pleased with the results.



Proud Potters

Our Birthday Celebration Supper was held in the Village Hall in January with a four-course dinner prepared by the committee.



Birthday Party

The February AGM was preceded by an inspiring talk on the Thames Valley Air Ambulance. Their engaging speaker described the service provided by helicopter and fast response cars and the team of highly skilled medical staff. Members contributed to a collection for this invaluable service. The speaker has offered to return to provide training in CPR and use of the defibrillator. Later in the month, a group of ladies enjoyed lunch at the Potting Shed Cafe in Studley Green Garden Centre.

We were educated on the importance of colour in our lives at our March meeting. This related not just to clothing but also to the interior design of our homes. Our speaker also gave us some

useful tips on decluttering and informed us of her personal shopping service. The Programmes for 2025/6 were distributed and members are looking forward to talks on a variety of interesting subjects. The Bourne End Garden Centre is the venue for the next lunch at the end of March and we also hope to enter a team in the County Quiz.

In April representatives are attending the Annual Council Meeting which includes some interesting speakers, a clothes exchange and a 'Faberge-style' egg competition. There is also an outing to a private showing of the latest Bridget Jones film at Beaconsfield National Television and Film in aid of Scannappeal.

A visit to the Wild Rose Flower Company garden and farm in Winslow is being planned for the summer.

We meet in Speen Village Hall at 7.30 on the first Thursday of the month and visitors are always welcome. Do come along, enjoy a glass of wine, hear an interesting talk and meet our friendly group. You don't have to join until you have given us a try. In addition to regular monthly meetings, we join in with local group and national activities. If you would like further information contact spewnwi@gmail.com.

Future Meetings

Thursday 3rd April

**The Queens Flight
and Royal Flying Today**

Thursday 1st May

Pots and Baskets

Thursday 5th June

**Man on the Spot
Reflections on 50 years
as a journalist**

M. R. COLLINS

GARDEN CONSTRUCTION

Est 1979

Driveway, Paving, Brickwork, Fencing
Groundworks, Excavations, Operated
digger hire.

We specialise in Block paving and all
types of slab laying Indian stone and
concrete offering a start to finish service
inclusive of excavations muck away,
supply and fix.

For estimate Phone: 01844 344623
Mobile: 07775 697857



ROWENA's

(MCThA) (AoR)

NHS Register of Approved Reflexologists
Karuna & Reiki Master

Aromatherapy
Caci non-surgical face lifting treatments
Reflexology
Aqua detox
Indian head massage
Acupressure massage
Energy healing

Treatments carried out in
home based salon in Bryants Bottom

Call Rowena for more information
or a free consultation

Tel: 01494 488430

Mob: 07855 848261

rowena.j.templeman@gmail.com

North Dean Village Hall Hire

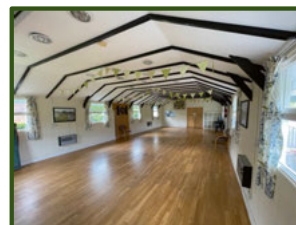


Our Village Hall can be hired out by clubs,
for private functions and family parties

Large, light and great value

Hire comes with large, secure, grass playing
field and children's play area

EMAIL: NDVHBOOKINGS@GMAIL.COM
OR TEL: JERRY 07880 785983 / 01494 564025



SPEENFETE



Planning is underway for this year's Speen Fete so please do **SAVE THE DATE** ...

All the old favourites combined with some new attractions and all beside the seaside.

**Want to be involved?
Would you be interested in joining
the Fete team?**

We are a small, friendly group who meet monthly from February onwards keen to welcome some new faces to our cross-generation committee.

**We are also keen to recruit volunteers
to help on the day.**

For example, setting up in the morning, running a side show, helping on the bar or selling grand draw tickets, even for an hour or two.

**Finally, if you are a small business and would
like to advertise in our Program or donate a
prize for the Grand Draw, please do let us know.**

Last year, with your help, the fete raised £5,500. Our village organisations received £4000 whilst 'Wheelpower' our Charity of the Year received £1,500.

**This year we are pleased to announce
our chosen Charity of the Year is**

The Getaway Foundation
Helping families make happy memories



This small, registered charity was set up to provide families in poverty with some of the same holiday memories and experiences that the founders had benefitted from with their families as children. It provides everything needed for a traditional weeks seaside holiday, including accommodation, transport, food and activity vouchers.

Last year they supported families across Buckinghamshire, Luton and the Isle of Wight, referred to them indirectly by both local authorities and family support charities. In 2025 their aim is to provide holidays for 24 referred Bucks families, many from High Wycombe and Aylesbury.

The charity budgets, on average, £1,864 to provide a week's holiday. It would be great if through our fundraising at this year's fete, Speen was able to provide a holiday for one family.

For more information and to volunteer to help at the Fete please contact:

**Clare Morris & Helen Davies at
fete@speenbucks.org.uk**

Speen Pilates

STRETCH • STENGTHEN • CONTROL



Reformer Pilates one to one, by appointment

Duet classes, by appointment

Small group mat classes (6) Booking essential

Monday

9am, 10.15am, 18.45pm

Tuesday

9.30am, 18.45pm

Friday

9am, 10.15am

Amanda 07733 307 475

amandapilates@btinternet.com

www.speenpilates.co.uk



retsofdesign

architectural design services

- Greenbelt
- AONB
- Conservation
- Planning permission
- Building control

m. 07985478563

e. hello@retosfdesign.com





Speen Helping Hospices

Raising Funds in Chilterns Villages Spring 2024

Supporting Helen & Douglas House for Children - South Bucks Hospice
Florence Nightingale Hospice Charity - Rennie Grove and Peace Hospice Care

SHH held a series of very successful fundraising events in 2024 for the four hospices the group supports Helen & Douglas House for Children, South Bucks Hospice, Florence Nightingale Hospice Charity and Rennie Grove and Peace Hospice Care.

We held a Quiz Night in March, the Ladies Spring Lunch in May, Comedy Night in September, Bridge Afternoon in October, the Annual Christmas Market in November and carol singing and Christmas Hamper raffle in December.

We have now donated £4000 to each of the above charities.

As we move into 2025, we started the year with a sell-out quiz in February and are once again organising a series of events and wherever possible these are held in different local Chiltern villages.

We are also looking for individuals to help with the fundraising. We were most fortunate having the support of John Radford, a member of High Wycombe Rotary Club who raised £1,500 in the autumn by a charity abseil down a tower in Portsmouth. You too, might be thinking of taking part in a marathon, half marathon or fun run this year and running on behalf of SHH.

Although the group was established back in 2001 in Speen, we are looking for a lot more input from other local villages and would welcome interest from ladies from these areas who might want to get involved and help us to promote events in your locality.

If you would be interested in raising money by taking part in an event or finding out more about becoming part of our fundraising group at SHH, please contact me at events@shh-shop.org or on 07778 803260.

For detailed information about all our events check out our website www.shh-shop.org

Gráinne Suter, Chair SHH





BY APPOINTMENT TO
HER MAJESTY THE QUEEN
BEDDING AND UPHOLSTERY
MANUFACTURERS
HYPNOS LIMITED ENGLAND

HYPNOS®

THE MOST COMFORTABLE BEDS IN THE WORLD



Visit our Princes Risborough Showroom and design
a bed that's just right for you:

Monday to Thursday 9am to 5pm | Friday to Saturday 9am to 4pm

Carbon Neutral | Inspired by Nature | 100% Recyclable | hypnosbeds.com

WILDLIFEWATCH

Peter Symonds

Birds of prey have been making the news recently. A White Tailed Sea Eagle caused a stir on the news and on social media when it flew into Spade Oak Gravel Pits at Marlow. This bird is believed to have been one of the birds reintroduced to the Isle of Wight in recent times.



Meanwhile in High Wycombe the pair of Peregrine Falcons which nest on All Saints Church in the town centre, have returned to their nest site ready to breed again. Volunteers visited the nest site in January to tidy the area and check for essential repairs. The area is strewn with remains of birds taken by the falcons. This year they found 10 Woodcock skulls and more remarkably the remains of a Little Auk. Little Auks are a common arctic species which are extremely rare in the UK with the only other recent record being of a live bird in Leicestershire in December 2024 near Rutland Water. If this bird had been seen alive in Buckinghamshire it would have attracted lots of birdwatchers due to its rarity. In a similar way the Woodcock are not common birds these days. I have yet to see one this winter.

Whilst it might be hoped that the Peregrines would take some of the pigeons that plague the town centre the opposite seems to be the case. They seem to have a preference for rarer species and particularly those which fly at night. Peregrines suffered badly from the impact of DDT, which reduced the thickness of their eggshells, prior to the 1970's but since that date they have received widespread support and numbers have increased significantly. There are now Peregrines in almost every large town including Aylesbury, Marlow with more than one pair in Milton Keynes, so their potential impact on some of their chosen prey species is quite significant.

In the village whilst the Red Kites are very apparent other birds of prey are less visible. Andy Thomson in Cherrytree Close has been attracting a local buzzard to his front lawn with food scraps. The same bird has also been photographed on the Bug House on Ridgleys Field. A Barn Owl has also been noted on the outskirts of the village and a report of a possible Little Owl in the village needs investigating.

A few animals have needed medical assistance from Tiggywinkles. Jess Walsh secured aid for a fox which appeared to be suffering from mange which is a highly contagious skin infection whilst Pat Anderson managed to secure help for an injured Muntjac deer. Unfortunately non- indigenous species cannot be released back into the wild but the fox may return if it recovers. Assistance was also needed for the thousands of tadpoles hatching in Studridge Lane pond. A fall in water levels due to the warm conditions left much of the spawn stranded but Andrew Price has been able to add water to boost the level slightly.

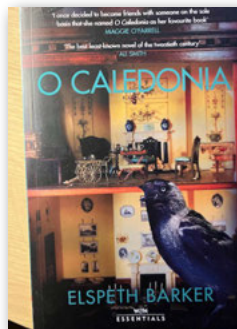
Less common birds reported include a Whinchat seen recently by Gill Biffa in her garden, presumably passing through the village on migration further north. and Firecrests recorded by myself and Jeremy Symondson in Coleheath Bottom and Monkton Wood using the Merlin App. (This is a free app that identifies bird song which adds an extra dimension to a rural walk.)

Please let me know of any interesting records - Peter Symonds
01494 488016
psymonds590@gmail.com

BOOKREVIEW

Christopher Boyce

Elsbeth Barker's novel 'O Caledonia' tells the story of the life of a young girl, Janet, from birth to early death, living in the wilds of Scotland. She is clever, imaginative and eccentric, and she struggles to conform and to fit into her family and school. The novel evokes wonderfully a world of Scottish puritanism, grimly strict nannies, eccentric household pets and enormous freezing castles. Janet takes refuge in her love of nature and her imaginative response to it. Barker writes beautifully - you can open the book at any page and find a phrase or paragraph which is so elegant that you want to savour it and read it aloud. The descriptions of nature are wonderfully poetic and the characters are so well drawn that they stay with you long afterwards.



Here's just one example: '[Janet] watched the sun rise over the far hills, the mist float in steamy filaments off the glen and the silent golden day bring glory to the sombre pines. She was the first person in the world; only she disturbed the dew. Riding back she saw secret

wonders: three baby hedgehogs feasted on a rotten chestnut husk; a doe and her fawn moved across her path, unafraid, absorbed in their separate world.'

Although some of the novel is quite dark, it's also very funny. I've recommended it to a number of friends who've all loved it and said it made them laugh out loud. It deserves to be much better known. Read it and enjoy!

HOME REARED MEATS,
LOCAL PRODUCE
& HOME COOKED FOOD

BESPOKE GIFT HAMPERS



Now with a **NEW**
ONSITE BUTCHERY

Chequers Estate | HP17 0UT

FARM SHOP & KITCHEN
Tuesday-Sunday 10am-4pm

www.buckmoorendfarm.co.uk

Local
DECORATOR

Call Rachael 07956 250031

- Painting & Decorating
- Wallpapering
- Colour Consultation
- Interior Design
- Fully Insured
- Clean & Tidy
- Free Quotes
- Jobs Small & Big

These Four Walls

info@thesefourwallsinteriors.co.uk



LOVELL FUELS
OIL DISTRIBUTOR



**Still Independent
and Family-Run**

YOU are at the heart of our business



01844 202777

www.lovellfuels.com

RELIABLE SERVICE

COMPETITIVE PRICES!

Go online, email us at sales@lovellfuels.com or call us for a quote

DARVILLS HILL FARM

Charlotte Downing

Marigold gloves and apricity @Darvills_Hill_Farm

Winter is a busy time on the farm as we continue the regeneration of our field hedgerows. This work is limited to the winter months to avoid disturbing nesting birds, so it is always a race against time as we juggle the shorter days and wet weather. It's labour-intensive work and we have always benefited from help in the shape of my diminutive yet indomitable mother-in-law, Glenys who lived here at the farm.



In her early 80's, Glenys could still be found wielding a chainsaw in Marigold gloves and welly boots (health and safety was not part of her vocabulary). This winter however Glenys was diagnosed with cancer which meant enforced bed rest, much to her frustration as she would far rather have been outside in the fields doing 'jobs'. She died at the farm in January much as she lived her life, quietly, peacefully and with a steely determination that I could only standby and admire.

The sadness we have felt at her passing has been tempered by the knowledge that she had been happy to pass the farm onto us and believed we were making a positive difference. This despite the fact she was inclined to neatness and order, and found my scruffy hedges and wilder meadows mildly baffling. She was generous enough to never impose her opinions on our progress, even my approach to embracing thistles and docks as nature's way of communicating that the soil needs some nurture, was something she stoically endured. Glenys told us not long before she died that she was delighted to have shared

this space with us and her grandchildren, having spent over 20 years living here alone, resolute that she would pass the farm on to the next generation fortunate enough to move in.

Glenys' family clan of Anderson's have inhabited this small Chiltern's farm in an unbroken chain since the 1800's. She was the sixth generation, and first woman in

charge of the farm, the size and configuration of which has remained unchanged for 200 years. At 40-acres it is considerably smaller than the average British farm of 120 acres, but it appears it is in good company as almost 50% of UK farms are less than 50 acres (DEFRA Gov.UK 2024). These low input, low-cost power-house farms, produce food for their local populations with positive benefits for soil health, biodiversity and human health. Small yet resilient, complex, constant, self-sufficient, and with a logic that at times defies understanding. I could be describing both Glenys and her farm.

With our attention taken elsewhere, our winter hedgerow work schedule was significantly derailed, however serendipity sent us a bunch of fabulous female friends. Cat, Helen, Annie and Jess were all curiously drawn to the prospect of physical labour and the promise of some gentle apricity (my new favourite word meaning the warmth of the sun on a crisp winter's day). We are thankful for their kindness. Glenys would have been very impressed with their effort and hard work, despite none of them wearing Marigold gloves.

OXMOOR FARM



The Barn Café

Saturday & Sunday from 10am

The Barn Restaurant

Friday 4pm — late

Saturday 2pm — late

Sunday 12pm — 3pm

*Friday 4 - 6pm

Little ones eat half price

*Friday & Saturday 4 - 6pm

Tomato & mozzarella pizza and a
beer or glass of house wine £14

Great Hampden, Great Missenden, HP169RD
info@oxmoorfarm.co.uk www.oxmoorfarm.co.uk

The John Hampden Monument



On the road from Great Hampden to Prestwood called Honor

End Lane, a monument stands by the side of the road as one drives up the hill. The monument is in the form of an eight-foot-high obelisk surmounted by a Maltese cross. It overlooks the valley facing down towards Chequers. The monument celebrates the role of John Hampden (1595-1643) who was one of the most influential residents to have lived in our vicinity. He was one of the leading architects of resistance to Charles 1's arbitrary rule during the years leading up to the outbreak of the English Civil War.

He came from an ancient Buckinghamshire family with a long tradition of service to the Crown, but he became known as – 'The Father of the People' when he stood out against the Ship Money tax. The monument near Prestwood is known as the Ship Money monument marking John Hampden's famous stand against illegal taxation.

In Parliament John Hampden was a tireless worker and played an important role in the impeachment of the King's chief minister, the Earl



of Strafford. As a result he was one of five members whom the king tried to arrest for high treason in January 1642.

When the Civil War broke out Hampden raised and commanded a regiment of foot soldiers for the Parliamentary Army, known as the famous Buckinghamshire Greencoats. At the age of 48 he was mortally wounded at the Battle of Chalgrove Field in Oxfordshire and died on 24th June 1643 at Thame.

After his death Hampden's integrity and bravery were long remembered and celebrated. Much of what he had fought for was enshrined in the British Constitution as the Bill of Rights of 1689. His political legacy can therefore be found in the constitutions of many of the world's leading democracies including the USA and much of the Commonwealth.

The monument itself is now maintained by the Chiltern Society whilst The John Hampden Society exists to honour and highlight the character and achievements of this great Englishman.

CG Tree & Garden Services

Tree surgery & felling

Fencing

Hedge cutting, topping & turfing

Woodchips & firewood for sale



Free estimates • qualified staff • fully insured

Please call

07798 896380

ELLIOT WENGLER

... and his pathway to comedy success via The One Show, BBC Earth, Any Answers, Upstart Crow and many more.

by Jill Rogerson

Elliot has lived in Speen for the whole of his childhood and most of his adult life. He kindly agreed to be interviewed about his career in the media, how he progressed within the comedy world being nominated for an award at the Edinburgh Fringe, and to share his aspirations for the future.



Educated locally at Speen School, then St. John's School in Lacey Green, Elliot attended John Hampden Grammar School. He recalls being an introvert and not being interested in sport or music – as a teenager he devoured DVD box sets and loved Yes Minister/Prime Minister and Mock the Week, sparking his initial interest and love of comedy. He says there was a wealth of on-line stand-up comedy on line during the Noughties (2000 – 2010 for we readers of a more mature age) – from around the time Elliot studied English Literature, Politics and Drama/Theatre Studies A levels at Henley College. His first involvement in stand-up delivery was during his time at Henley, upstairs at Zizzi's in the town and taking part in Scratch Nights where anyone could perform (almost) anything.

Elliot was able to gain more experience delivering stand-up while studying for a degree at East Anglia University. – gaining a Student Comedy Award and, more widely, becoming involved in the university's student radio and newspaper. An outstanding memory he has is of performing at an end of final exams gig/party in front of 80 attendees, a success he recalls and a lively affair! After submitting his dissertation on the Simpsons and graduating with a BA in Politics with Media at East Anglia University, Elliot decided to head towards the BBC rather than Westminster ...

Following a career pathway in the media (TV/radio/film) industry is difficult and requires a dogged determination and, reading his cv, Elliot has displayed both determination and perseverance in his 'day' job and at the same time in continuing his much-loved comedy career. With the aid of Google, the following reflects just some of the involvement Elliot has had with, but not exclusively with, the BBC since 2017: Production Runner/Audience Researcher (The One Show, Chelsea Flower Show); Production Coordinator (Top Gear, Dr Who); Production Secretary (Smothered), and currently working as Assistant Producer for BBC Studios. This latest job role involves the preparation and launching of VODs (videos on demand) and FAST (free, ad-supported, streaming TV) Channels.



While climbing up the media ladder, Elliot continues to perform stand-up, often in London and the South-East but also more widely including the Edinburgh Festival Fringe where he was nominated for the Comedy Award 2024 with 'Jokemon' – comprising 150 jokes for each of the Pokemon species. He will be taking his Jokemon performance to the United States later this year.



More locally we are aware of Elliot coordinating and taking part in stand-up performances at Speen Festivals and as fundraisers for the Speen Helping Hospices. He has a great fondness for his home village remembering events

such as Fun Days as a child (especially the Kiddie Hurling) and believes that it demonstrates a unique cohesiveness and affection within the community. His memories of growing up in Speen often inform his comedy content – this article finishes with an oft-used opening line to start Elliot's performance: "I live at home in a village in the middle of nowhere and I am fine with that. Mostly."

Good luck to you in the future, Elliot.

quote from 'Yes, Minister'

"Jim Hacker explains who reads the newspapers"

Hacker: Don't tell me about the press. I know exactly who reads the papers. The Daily Mirror is read by people who think they run the country; The Guardian is read by people who think they ought to run the country; The Times is read by the people who actually do run the country; the Daily Mail is read by the wives of the people who run the country; the Financial Times is read by people who own the country; the Morning Star is read by people who think the country ought to be run by another country, and the Daily Telegraph is read by people who think it is.

Sir Humphrey: Prime Minister, what about the people who read The Sun?

Bernard: Sun readers don't care who runs the country, as long as she's got big t..s".

Speen Environmental Action Group SEAG is affiliated to Bucks Climate Action Alliance which is an umbrella organisation enabling all Bucks organisations and groups concerned about the Climate Crisis and Biodiversity Loss to come together as one powerful voice, calling on Bucks Council to act now. <https://bucksclimateactionalliance.org/who-we-are>

In February several members of BCAA put in public questions to the monthly Transport, Environment and Climate Change Select committee meeting. My question was.

The community had positive engagement with our Climate Change officer in Speen in April 2023 by highlighting issues around food recycling and other environmental concerns. This was a very positive contribution towards supporting our community to achieve net zero emissions. I understand this stakeholder role is vacant, what plans are there to replace the postholder and is this budgeted for?

This is the answer I received

It is acknowledged that the Climate Change Officer undertook extensive engagement with community groups in 2022/23 and 2023/24 which was well received. Funding for the role has been exhausted and therefore at this stage the postholder will not be replaced.

You can access the agendas and minutes on the Bucks County Council website and even watch some committee meetings if you sign up.

We have Parish and Council Elections coming up on May 1st and campaigning will probably have already started. If you are fortunate

enough to meet a councillor and are concerned about our environment, climate change and biodiversity loss here are some points or questions that you might like to ask.

- Can we accelerate action on solar panels for public buildings and Solar Together for households?
- Can the council fully decarbonise the council fleet and council buildings by 2030?
- Would it be possible to set up a large-scale programme to educate and support householders to switch to heat pumps? (Documents reveal 800,000 homes in Bucks have gas boilers)
- Why does the council not enforce private and commercial landlords to comply with regulations to have Energy Performance Certificates and achieve energy efficiency standards?
- Can they do more to support active travel with better maintenance of existing cycle paths and pavements – ensuring new housing and industrial developments are made accessible by foot or bike?
- Will the council bid effectively for Central Government funding for Climate Action like other authorities do?

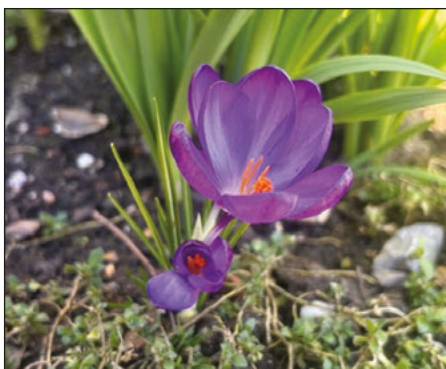
Tracking the Impact

Tracking the Impact is an award-winning, landscape-scale wildlife surveying project in the Chilterns first developed 5 years ago as part of the Chalk, Cherries and Chairs Landscape Partnership funded by the National Lottery Heritage Fund. It is now supported by a number of partner organisations with new funding from Rebel Restoration (www.rebelrestoration.org/). The project was designed to understand what is happening to wildlife across the Chilterns and to show whether conservation activities are having a positive impact on biodiversity. It involves a citizen science approach in which volunteers from the

local community are trained by experts in species identification and survey methodology to collect and record data on birds, butterflies and/or plants in one of 72 randomly selected sample squares in the Chilterns, each of 1km² in size. By 2024, the number of volunteers had reached almost 275. More volunteers, including two members of SEAG, are being recruited and trained in the coming months. If you are interested in finding out more about this project or becoming a volunteer, please visit www.chilterns.org.uk/trackingtheimpact or contact Mandy How on howmandy@hotmail.com or 07786961569

Spring Speen – A Nature Diary

It has seemed like a long winter so the recent signs of spring have been so welcome although we have had to pick our moments to enjoy the sunny ones – they can seem quite fleeting. Inspired by something online I decided to make a nature diary. On March 4th, 2025, I noted common primrose, snowdrops and Dutch crocus in a garden border – brave little flowers as precursors to the blousy daffodils and other bulbs.

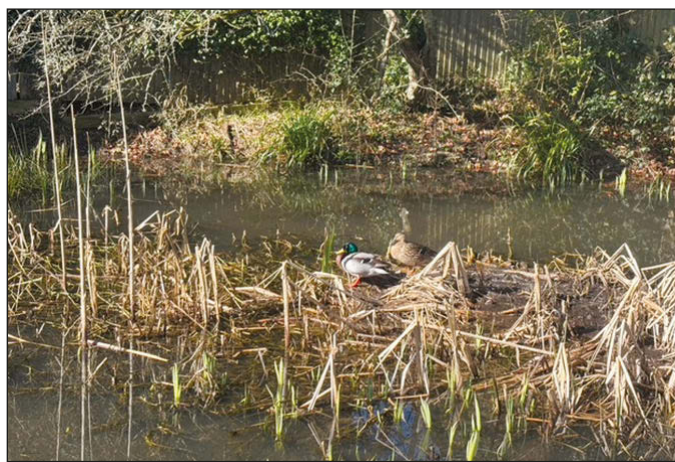


But it was the sounds that were truly refreshing and as the days go by become louder and more insistent. My Merlin Bird app noted European Greenfinches, European Robins, Carrion Crows, and Eurasian Blackbirds although I know I have Blue Tits and



Gold Finches as regular visitors to my bird feeders. The rain has filled the Studridge Lane pond, and

the frogs and frog spawn have been amazing. But I watch the water level nervously as it soon lowers potentially leaving nature stranded. Still, it is so much better since our recent work as it provides a home and sustenance for ducks, birds, frogs and so much more. As the spring continues, and we all feel more confident about the warmth we should all remember the NO MOW MAY moto and leave our wildflowers and plants to blossom and insects to pollinate.



Nature does not want “neat and tidy” – its needs us to work in harmony and enjoy its freedom and beauty.

WEST WYCOMBE ART GROUP

Local artists in show at Easter

The well established and esteemed West Wycombe Art Group are holding two exhibitions in 2025 over the Easter and August bank holiday weekends, and both will feature Speen residents Joanna Brownridge and Loiz Bale.



and how much you enjoy it!"

The Easter exhibition is on show at West Wycombe Village Hall from Friday 18 – Monday 21 April from 10am – 5pm.

Admission is free and many of the exhibits will be on sale.



Joanna has been a member of the Group for 9 years, Loiz for nearly three, and both greatly enjoy and value the exchange of ideas, demonstrations and workshops, and the cheerful and supportive

atmosphere of their weekly meetings.

Joanna thinks the exhibitions will appeal, "We know that our local communities have shown ongoing support for the Arts, and a hunger for culture through events like the biannual festival,

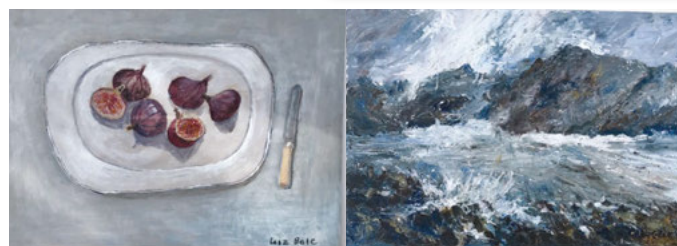


and so we would love to invite fellow residents of Speen and North Dean or come and see our work, and that of our Group. There will be a wide range of work on show reflecting the many ways our 25 members express their creativity"



And Loiz believes there is another benefit to attending,

"It would be great to see local friends there. You might even be inspired to pick up a pencil or paintbrush yourself to explore the world around us. Just go for it – you might be surprised at the results



www.westwycombeartgroup.com

wwag
West Wycombe Art Group

**Easter
ART
Exhibition**

Friday 18
10am – 5pm
Saturday 19
10am – 6pm
Sunday 20
10am – 6pm
Monday 21
10am – 5pm
April 2025

West Wycombe
Village Hall
HP14 3AB

Admission free
Art for sale

Easter Bank Holiday Weekend

[westwycombeartgroup.com](https://www.westwycombeartgroup.com)

SPEEN TENNIS CLUB

We would like to highlight the wonderful village amenity that is run by Speen Tennis Club.

The club manages a high-quality court that is kept in top condition by the Speen Tennis Club committee, a group of Speen residents who administer the running of the club and its membership.

The court is located at the top end of the playing fields but does not come under the responsibility of the Playing Fields Association. Use of the court is strictly reserved for members of Speen Tennis Club, to preserve the quality of the playing surface. The annual subscriptions are used for day-to-day maintenance and to finance the periodic cleaning, repainting, and resurfacing of the court.

There are many advantages to joining the tennis club, including:

- Unlimited use of the court throughout the year
- Good value opportunity to exercise for all ages.
- Online court booking system.
- Free tennis coaching sessions on offer during the summer holidays with a professional LTA coach, for both adults and juniors
- Opportunity to connect with other tennis playing neighbours.
- Linked LTA membership entitles you to enter the ballot for Wimbledon tickets each year.
- The satisfaction of knowing you are supporting a wonderful village institution and keeping it going for future generations.

We are currently renewing memberships for the coming year.

The rates are as follows:

Family £60 • Adult £35 • junior £10

We are very keen to encourage new members, particularly amongst families who have recently arrived in the area. All standards are welcome.

We would also welcome any interest from members who may be keen to become involved in the running of the club. The duties are genuinely not onerous!

For any enquiries about the club or to obtain a membership application form, please email our Membership Secretary, Philippa Lane, at membershipspeen@gmail.com



T: 01494 211941

M: 07368158368

**FREE QUOTES
LOCATED IN SPEEN**

- Leaks
- Repairs
- Taps
- Toilets / cisterns
- Radiators
- Showers
- Much much more!

**Reliable, Professional
Affordable!**

WHO'S WHO

North Dean Village Hall - Chair	Andrew Howard	07850 789 212
North Dean Village Hall - Bookings	Jeremy Mudie	07880 785 983
One Can Food Bank Trust - Trustee	Graham Peart	01494 488 327
Pigotts 7 '48' Musical Evenings	Jeremy Hamilton	07834 224 589
Speen Good Neighbours	Pat Richardson	01494 488 627
Speen & North Dean Guides	Pauline Hall	01494 488 372
Speen & North Dean News - Chairman	Jill Rogerson	01494 488 315
Speen & North Dean News - Advertising	Tom Dent	01494 488 943
Speen & North Dean Toddlers	Sandy Mitcheson	07747 635 974
Speen Baptist Church - Pastor	Rev. Tim Deller	01494 488 753
Speen Environmental Action Group (SEAG)	Jane Farley	07889 433 630
Speen Festival	Liz Patroe	07976 329 953
Speen Fete - Chair	Clare Morris/Helen Davies	01494 488 553
Speen Helping Hospices - Secretary	Maureen Laing	01494 488 397
Speen Heritage Group - Chairman	Peter Symonds	01494 488 016
Speen Marquee	Greg Cook	07917 775 116
Speen Playing Fields	Tony Bobroff/Matt Davies	07768 330 273
Speen C of E Infant School - Head	Lisa Davies	01494 488 321
Speen School PTA - Co-Secretary	Charlie Harrison	07772 562 979
Speen Stores and Post Office	Ranjan	07581 347 681
Speen Tennis Court - Secretary	Philippa Lane	01494 488 453
Speen Village Hall - Bookings	Sue Taylor	01494 488 500
Speen Village Hall - Acting Chairman	Adrian Farley	01494 488 749
Speen WI - Secretary	Jenny Pearce	07305 188 093
St John's Parish Church	Revd Tony Bundock	01844 347 741

LACEY GREEN PARISH COUNCIL

Councillors for Speen

Roger Craft
Philip Suter

r.craft@laceygreen-pc.org.uk
p.suter@laceygreen-pc.org.uk

HUGHENDEN PARISH COUNCIL

Councillors for North Dean

Simon Kearey

Simon.kearey@hughendenpc.org.uk

BUCKINGHAMSHIRE COUNCIL

Councillors for Speen

Carl Etholen
Shade Adoh
Robert Carington
Steve Broadbent
David Carroll
Clive Harriss

Carl.Etholen@buckinghamshire.gov.uk
Shade.Adoh@buckinghamshire.gov.uk
Robert.Carington@buckinghamshire.gov.uk
Steve.Broadbent@buckinghamshire.gov.uk
David.Carroll@buckinghamshire.gov.uk
Clive.Harriss@buckinghamshire.gov.uk



- EST. 1989 -

DAIRY ICE CREAM



Since 1989 Beechdean Dairies have been producing high quality Dairy Ice Cream. With over 30 years' experience in the industry, we have continuously developed our Dairy Ice Cream to provide absolute indulgence without compromise.

Our Ice Cream has no artificial colourings, flavourings or additives.
All of our products are Suitable for Vegetarians.

MINI TUBS

Made with British whole milk, rich double cream and the finest ingredients. Our Mini tubs are perfect for single servings, from children to adults.

We hope you enjoy our ice cream.

Sorbet and vegan options are also available in this range.



TAKE HOME TUB

Our Classic Vanilla Dairy Ice Cream in a larger take home tub for the entire family to enjoy.

It's a delicious dairy ice cream for the whole family – we've put our passion and years of ice cream experience into every tub!



YOUR LOCAL STOCKISTS

Hughenden Village Store and Coffee Shop

The Village Hall, Coombe Lane, Hughenden Valley, High Wycombe, HP14 4NX

01494 568653

Speen Stores

Chapel Hill, Speen, Princes Risborough, HP27 0SL

01494 488258



www.beechdean.co.uk





Prestigious properties require a tailored approach to marketing.

Experience our excellent custom service and let our
in-depth local knowledge and expertise work for you.

Contact our team on 01844 343131

fineandcountry.com/uk/southbuckinghamshire

southbuckinghamshire@fineandcountry.com

FINE & **COUNTRY**