



Summer 2023

Issue 87

# THE SPEEN & NORTH DEAN *News*





# simply beautiful gardens

Alchemille has been designing and creating beautiful, innovative, inspirational outdoor spaces since 2004.

From urban courtyards to country estate gardens, we can make the simply beautiful garden of your dreams a reality.

FROM CONCEPT  
TO CREATION



Image courtesy  
of T Pottinger

01494 488072 • 07909 936718 • [design@alchemille.co.uk](mailto:design@alchemille.co.uk)

[www.alchemille.co.uk](http://www.alchemille.co.uk)



## Get smart in your garden

From comprehensive plant care advice, to regular maintenance or a one-off project, our experienced team is ready to smarten up **your** garden.

For more information contact  
**Andy Merriman** on

**07827 290770**



Working in association with Alchemille Garden Design



# Welcome!

to our Summer Edition.

As you will see, both villages have been extremely busy since our spring edition and I would like to take this opportunity to thank everyone who has taken time out of their busy schedules to showcase our community efforts so enthusiastically.

We are so fortunate to live in an area of outstanding natural beauty and enjoy the facilities that go hand and hand with living in a rural community such as our own village halls and playing fields. We know our neighbours and look out for each other as evident on our village WhatsApp group. We also have a shop and Post Office in Speen and I encourage everyone to support it.

I hope you enjoy reading our taste of summer.

Best Wishes

Jill Roberts

## Contents

Welcome	3
What's On	5
Update From Issue 86	5
Speen School & Little Apples Preschool	7
Speen School PTA	7
Speen Church	9
North Dean News	11
The Coronation Tea Party	12
Memories of Past Coronations	13
In Remembrance	14 & 15
Speen WI	17
Recipe	17
Speen Festival	18
Speen Fete	19
Lacey Green Parish Council	21
Councillor David Carroll	21
Darvills Hill Farm	23
Down on the Farm	25
Speen Heritage Group	27
Why Volunteer	27
Wildlife Watch	29
Speen Helping Hospices	31
Speen Fun Day	31
Speen Environmental Action Group	33
Who's Who	34

Front cover: Hare in the field behind Cournwood  
taken by Craig Watson

## Next Edition

Copy for the next edition is due by 20th October with a planned publication date of early November. Please send photos separately from text, together with captions and a consent form (downloaded from the SNDN website [www.speenbucks.org.uk](http://www.speenbucks.org.uk)) if any photos are of children. Please send to editor. [sndn@speenbucks.org.uk](mailto:sndn@speenbucks.org.uk).

## With grateful thanks

To all our advertisers for their support of this magazine and to all the volunteers who deliver it to your door.

## Welcome Packs

The Good Neighbours scheme was set up many years ago and is now run by Pat Richardson in Speen. The service is to provide new Speen residents with a Welcome Pack of village information, so if you know of anyone new to the area please call Pat Richardson on 01494 488627.

## Village News

If you are not already signed up to The Village Messenger do email [Village@SpeenBucks.org](mailto:Village@SpeenBucks.org) to be put on the mailing list, with the word 'include' in the subject line - they will keep you up to date via email on a monthly basis with all the latest village news and important dates.

SPEEN & NORTH DEAN NEWS COMMITTEE

JILL ROGERSON (CHAIRMAN), TOM DENT (ADVERTISING/TREASURER), JILL ROBERTS (EDITOR), CHRISTINE RYMAN (NORTH DEAN)

[www.speenbucks.co.uk](http://www.speenbucks.co.uk)

# ASTON HEARING

We Are All  
EARS & Hearing

Amersham . Saunderton . Thame

[www.astonhearing.co.uk](http://www.astonhearing.co.uk) . 01494 733840

## UPDATE FOR THAME

We are excited to be moving to a new premises in Thame in early May 2022. Previously Twigs and Twine nextdoor to Waitrose in Greyhound Lane. We will be delighted to welcome you  
Watch this space for details.....



# WHAT'S ON

## *in Speen & North Dean*

### REGULAR EVENTS

Sundays	Regular Service of Worship	Speen Chapel 10.30am	Speen Church 488753 pastor@speenchurch.uk
1st & 3rd Sundays	BCP Holy Communion	St John's Church, Lacey Green 8.00am	
Tuesdays Term Time Only	Speen & North Dean Tiddlers & Toddlers	Speen Chapel Hall 9.30-11.30am	speen-northdeantoddlers@gmail.com

### AUGUST

Thursday 3rd	Speen WI Shackleton's Antarctic by Jeremy Holmes	Speen Village Hall 7.45	Jenny Pearce 562333
Thursday 24th	Get Together	North Dean Village Hall 7.00pm	BYO Drinks/Glasses, nibbles provided

### SEPTEMBER

Saturday 2nd - 17th	Speen Festival	In and around Speen	More information to follow
Thursday 7th	Speen WI The RNLI by Chris Lowe	Speen Village Hall 7.45pm	Jenny Pearce 562333

### OCTOBER

Thursday 5th	Speen WI Film Night	Speen Village Hall 7.45pm	Jenny Pearce 562333
Friday 6th	SHH Lloyds Wine Tasting	Speen Chapel Hall	Visit SHH Website
Wednesday 11th	SHH Charity Bridge	North Dean Village Hall	Details to follow
Saturday 28th	Quiz Night	North Dean Village Hall	Meal and drink on arrival Tickets £15 available through Eventbrite

### NOVEMBER

Thursday 2nd	Speen WI War Graves Commission	Speen Village Hall 7.45pm	Jenny Pearce 562333
Saturday 18th	SHH Christmas Market	Speen Chapel 11-4pm	Visit SHH website for further details
Thursday 7th Dec	Speen WI Christmas Activity	Speen Village Hall 7:45pm	Jenny Pearce 562333

## UPDATE FROM ISSUE 86

North Dean Memorial Hall Trustees and Committee are very grateful for a most generous gift bequeathed to the Hall in Meghan Chinn's will. Meghan and her husband Bill built their home, Chinnysnook, in North

Dean and spent many happy years there together. She was a long serving active member of both the Hall Committee and Trustees and sadly passed away last year.

## List of Advertisers

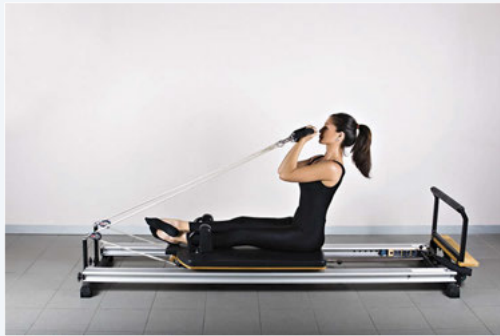
Alchemille Garden Design, Andy Ellis Tree Surgery, Ashridge Home Care, Aston Hearing, Beechdean Farmhouse Dairy Ice Cream, Briants of Risborough Ltd, Buckmoorend Farm Shop and Kitchen, CG Tree & Garden Services, Fine & Country, Fraser Morgan School of Dancing, Hypnos Beds, Lloyd's Wines, Lovell Fuels, Manor Garage, MR Collins, Nick Higgins Forestry and Fencing, North Dean Village Hall, Plugs Electrical, Paul Newman Ltd, Rowena's Therapies, Squ4re, Speen Pilates, The Gate Pub, The Harrow Pub, The Smart Garden Company, Tudor Travel, Village Environmental Services, These 4 Walls.





# Speen Pilates

STRETCH • STRENGTHEN • CONTROL



## BOUTIQUE PILATES

TRANSFORM YOUR FITNESS

Pilates can address structural imbalances, pain and difficulty with movement. It aims to enhance your posture, strength and flexibility, body tone, stamina and general fitness whilst releasing unnecessary tension.

### ONE TO ONES ON STUDIO EQUIPMENT

One to one tuition offers accelerated learning and improvement, the Reformer uses spring loaded weights to improve your posture, strength and stamina leading to a toned body.

### SMALL GROUP MAT CLASSES

Monday and Tuesday at 9.30am and 6.30pm

Thursday and Friday at 9.30am

I also offer bespoke classes for groups of up to 6 friends!

More details on the website  
Booking essential

★ ★ ★

The Studio at Midmede, Chapel Hill, Speen

Amanda 07733 307475

[amandapilates@btinternet.com](mailto:amandapilates@btinternet.com)

[www.speenpilates.co.uk](http://www.speenpilates.co.uk)



# SPEEN SCHOOL & LITTLE APPLES PRESCHOOL

Jill Rogerson

## Welcome to Lisa Davies – our new Headteacher



Lisa, as she likes to be called by staff, parents and the community (Ms. Davies to the pupils), first came to Speen School as a two-day per week early years teacher in support of Mrs. Coles, the previous Headteacher. When Mrs. Coles retired in early 2023, Lisa applied for and was appointed to the role of Headteacher and has loved her first couple of terms at the helm of our school.

With a Welsh background on her father's side, Lisa grew up in Hayes in Middlesex and taught for 20 years at the start of her career in Hounslow and Feltham. She then had a complete change of environment, taking up a teaching post with oversight of early years' learning of four classes in Hong Kong.

During her eight years there, which she describes as a wonderful experience, she took full advantage of the opportunity to travel throughout Asia. One of the favourite places she visited was Laos, a poor country, where she had the opportunity to teach in a local school for a short period. Accompanying Lisa on her travels – often backpacking – was Alfie, her son, who she adopted locally in Hong Kong at the age of 3, and who is now a strapping 15 year-old.

Lisa wanted Alfie to be brought up near their family and so she returned to the U.K., taking up a temporary post at Little Kingshill Combined School – which turned out to be permanent and in due course she became deputy headteacher. It was while



she was there that she was seconded part-time to Speen School where she loved the family atmosphere with staff, governors and parents all working together as a team for the benefit of the pupils.

Lisa is a massive music fan, across a range of different genres, and she regularly attends music festivals with Alfie; she is also keen on

photography and says that 'back in the day' she played hockey for the Hong Kong Football Club.

Looking to the future, Lisa is keen to continue the community focus of the School in its widest sense and is planning a big Little Apples Pre-School picnic during the summer holidays so that new and existing parents can get to know each other. The School Council is active and currently promoting links with charities such as the Speen Horses Trust and the Agape Project in India. She wishes to expand the learning spaces, in particular across the outdoor natural environment – by extending the physical outdoor spaces available to the children attending both Little Apples and Speen School.

Lisa says that members of the village are welcome to become involved in supporting the School – as well as a very active PTA, a group of 'more mature' villagers are carrying on the reading support work which Gloria Holmes set up and so ably managed for many years. Please contact the School on 01494 488321 for further information.

## SPEEN SCHOOL PTA

Fleur Ridley, PTA Co-Chair

It has been an action-packed term for the PTA. In March we had Safari Supper which proved very successful, with lots of people returning to school for the dessert and disco. We managed to raise in excess of £1,500, which is brilliant. Thank you to all our wonderful hosts and to everyone who attended this annual village event.

In June the PTA worked closely with the Speen Playing

Fields Committee to bring a return of the Speen Ball for the first time since the pandemic. The Ball took a 'Mad Hatters' theme and was a fabulous event. It was fantastic to see the dancefloor full of so many people from school and the village coming together for a fun evening. This is a very big fundraiser for the village, but it is also a very special event that brings the whole community together. We would





## FRASER-MORGAN SCHOOL OF DANCING

\*\*\*\*\* Naphill Village Hall \*\*\*\*\*

### RAD BALLET for ages 3+



For more information  
please contact  
01494 816539 or  
07974 121081



## ROWENA's

(MCThA) (AoR)  
NHS Register of Approved Reflexologists  
Karuna & Reiki Master

Aromatherapy  
Caci non-surgical face lifting treatments  
Reflexology  
Aqua detox  
Indian head massage  
Acupressure massage  
Energy healing

Treatments carried out in  
home based salon in Bryants Bottom

Call Rowena for more information  
or a free consultation

Tel: 01494 488430

Mob: 07855 848261

[rowena.j.templeman@gmail.com](mailto:rowena.j.templeman@gmail.com)

# North Dean Village Hall Hire



Our Village Hall can be hired out by clubs,  
for private functions and family parties

---

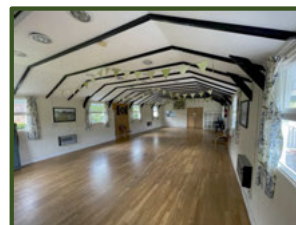
Large, light and great value

---

Hire comes with large, secure, grass playing  
field and children's play area

---

EMAIL: [NDVHBOOKINGS@GMAIL.COM](mailto:NDVHBOOKINGS@GMAIL.COM)  
OR TEL: JERRY 07880 785983 / 01494 564025



like to thank the local businesses who supported this event and donated raffle prizes including The Whip Inn, Coco Tamarind and The Hampden Arms. There were also several companies who sponsored tables including Teds Sheds, Chiltern Pest Solutions, Tactical Paws, Questa, Anytime Fitness, The Repair Barn, Missenden Landscapes, King's Farm Shop, Peterley Manor Farm and Kiwi Building. There were so many people who helped bring this event to life, and we are very grateful for all of the help and support which made this event a success.

The PTA also organised three stalls at the village fete in July, running 'Hook a Duck', the 'Bottle Tombola' and the 'Sweet Tombola', with the help of our lovely

school community. It was a very successful day and the children did a wonderful country dancing performance at the start of the event. The PTA were delighted to be nominated as the chosen charity for the fete this year.

Next term, we are hoping to carry on with the modernising works to the playground by replacing some or all the outside picnic benches and add some more play equipment in the playground. We are now looking ahead to our Christmas Fair and Parent social evening next term, as well as lots of our regular fundraising events. But for now, we are looking forward to the summer holidays. Many thanks for your continued support.

## SPEENCHURCH

*Pastor Tim Deller*

Life at Speen Chapel has been very busy as we live through the seasons of the Christian Church calendar and celebrate life events. Since last writing Easter and Pentecost have come and gone and sadly, we have celebrated and honoured the lives of those who have passed away in the village.

Throughout all of this it has been good to receive visits to the Chapel. In April we prepared an Easter garden and welcomed the children from Speen School as they explored the meaning of Easter.



Also, it was a privilege to be able to serve the community when a team from the Church ran the BBQ stall at Speen Fete.

Many of our regular activities wind down over the summer weeks. One of them is our successful Tiddlers and Toddlers



group as we head into a summer break. However, we welcome all parents, grandparents and carers with their babies and toddlers and will open again on Tuesday mornings during term time. So do check our website, [www.speenchurch.org](http://www.speenchurch.org) for updates.

Maybe you have never been to a worship service at the Chapel and are curious. Might I extend an invitation to our monthly informal, interactive King's Café Worship Service where Christianity is explored over breakfast. (Normally the second Sunday of the month).

I hope that all of you reading this will see Speen Church as your church. There are many groups and activities which you can come and be part of and there

is always a warm welcome for all at our Sunday morning services.



For more information on the church do visit our website [www.speenchurch.org](http://www.speenchurch.org) where you will find out more about us, our calendar of events, as well as details about projects we support.

Blessings, Tim.



HOME REARED MEATS,  
LOCAL PRODUCE  
& HOME COOKED FOOD

BESPOKE GIFT HAMPERS

**Buckmoorend**  
farm shop & kitchen



Free Home Delivery &  
Contactless Collections

Chequers Estate | HP17 0UT  
SHOP Tues - Fri 10 - 6 & Sat - Sun 10 - 4  
KITCHEN Fri - Sun 10 - 4  
[www.buckmoorendfarm.co.uk](http://www.buckmoorendfarm.co.uk)

**LLOYD'S**  
WINES

QUALITY WINE WHOLESALER  
SUPPLYING LOCAL BUSINESSES  
AND PRIVATE CUSTOMERS

EVENTS & FREE LOCAL DELIVERY

Upper Warren Farm, Hampden Road, Prestwood,  
Great Missenden, Buckinghamshire  
HP16 0JL

[LLOYDSWINES.COM](http://LLOYDSWINES.COM) [@LLOYDSWINES](https://www.instagram.com/LLOYDSWINES) [SALES@LLOYDSWINES.COM](mailto:SALES@LLOYDSWINES.COM) 07547 645917

**LOVELL FUELS**  
OIL DISTRIBUTOR



**Still Independent  
and Family-Run**

**YOU are at the heart of our business**



**01844 202777**

**[www.lovellfuels.com](http://www.lovellfuels.com)**

**RELIABLE SERVICE**

**COMPETITIVE PRICES!**

Go online, email us at [sales@lovellfuels.com](mailto:sales@lovellfuels.com) or call us for a quote

## SPRING VILLAGE GOLF MATCH

between North Dean & Speen  
25th May at Buckingham Golf Club

A very close match as always, which Speen won by 1.43 average Stableford points. The next one will be the Autumn match in October at a venue to be decided by Speen.



## JAMES PALMER - DofE GOLD AWARD

*Christine Ryman*



On 15th May, our very own North-Deaner - James Palmer – ventured to Buckingham Palace to receive his GOLD award from the Duke of Edinburgh. A very special and proud moment indeed and one he will always cherish.

He completed his Bronze, Silver and now Gold award over a 4 year period, achieving the following:

**VOLUNTEERING:** Training a puppy called

Nelson for the charity Hearing Dogs for Deaf People.

**PHYSICAL:** Running – participating in various competitions and cross-country championships.

**SKILLS & EXPEDITION:** Cooking family meals, 10 day Highlands expedition (camping in the wild) in Scotland.

**RESIDENTIAL SECTION FOR GOLD:** This took place on an Edwardian yacht over a 5 day period!

We are all very proud of James here at North Dean with this amazing achievement, and on a personal level, he saved our bacon during the long covid months, by ordering and delivering all our groceries every single week! And he continues to be most helpful in other areas too, so thank you James.



## NORTH DEAN COMMITTEE MEMBERS HELPING OUT AT THE HORSES TRUST FUN DAY ON SUNDAY 25TH JUNE

*Left to right: Kevin, Nev, Christine, Kim, Sarah, Judith & Bob.*

What a team. A fun time was enjoyed by all, directing hundreds of cars to their rightful parking slot on the hottest day. Very friendly atmosphere and we enjoyed a wonderful lunch and later a master class in riding techniques - fascinating! Thank you all who helped, it was greatly appreciated by the Horses Trust.

## KITE'S OF COURNSWOOD

*Sharon Constancon*

I remember the time when I first came to Cournswood in 2003, the excitement of seeing a Red Kite and seeing them numbered with different colour tags – part of the re-population program.

For the past 10 odd years we have had a nesting pair and as of about 3 years ago, we now have a second nesting pair.

Over this past weekend we were visited by last year's teenagers who are not yet adept hunters.

At this time of the year, when we are trying to get moorhen and duckling chicks to survive the predators, we support by giving all the populations a little food, otherwise the kites join the heron and fish for koi !!!

Last month a kite flew down within a foot of my shoulder, quite impressive when you look across the width of

the wingspan of an adult, they are truly massive – 5 ft across.

Another amusing sight is the bird bath dwarfed by a kite when it comes down to drink, which makes little sense when they have half an acre of pond to source water!

They are very vocal particularly when teaching the new young sub adults to hunt. Like the magpie's, the youngsters like to stay on the branch and yell, rather than embarrass themselves in front of curious humans.

The most we have seen in the skies above at the same time is around 25 birds, quite spectacular to behold.

They often hunt in pairs where one comes down tailgated by a mate to pick up any missed prize. They are so fast that the action activated camera cannot catch them.



*Here is one photo we did catch – we are in constant awe of them.*



# THE CORONATION TEA PARTY

Jill Rogerson



## Speen & North Dean Coronation Tea Party

Sunday 7th May, 2pm

• Speen Playing Fields •

Bring a picnic • Best Dressed Table Prize



After the inclement weather on Coronation Day itself, the sun shone in Speen for the afternoon Coronation Tea Party for Speen and North Dean villagers.

Amanda Dobbs planned the whole event and decorated, with help of grandson Dylan, the Marquee with Union Jack bunting – thanks are due for the free use of the Marquee and to those who erected it and took it down (dodging the showers during the days before and afterwards).

Long tables, with chairs, were transported to and from the Village Hall (thank you Steve Binder) which attendees were invited to decorate with a prize being offered for the best table, this was won by Mel and Jackie Foster/William and Diana Summers/Keith and Jeanette Rosling/Pat Anderson. Partygoers brought their own picnic teas and fizz/alternative drinks, and teas and coffees were available free of charge, dispensed by a small group of volunteer teapot wielders.



*Coronation Tea Party in the marquee*

As the weather was so unusually pleasant, some family groups picnicked outside and games were available for the under 7's overseen by Paul Rogerson, and son Christopher. A rummage through the Playing Fields Fete shed had produced a donkey that was popular as a hoopla target, small hoops on hooks game and a limbo challenge.

Points were awarded overall and the winner was Tabitha Radford aged 6, who was a proud recipient of a King Charles III teddy bear.



*Tabitha Radford with King Charles teddy bear prize*

Older children ... and some parents ... enjoyed several games of tug of war – rekindling memories of fetes past.

Outside the marquee was a display of volunteering opportunities, a part of community life which King Charles had particularly wished to be highlighted over the Coronation Weekend. Cat Cook also provided information about Speen Festival which is a major biennial community event and due to be held this coming September.

Thanks are also due to the Playing Fields Committee and to Lacey Green Parish Council for providing grants to help with expenses incurred.

**But the major thank you must be to Amanda without whom the event would not have been thought of, planned and executed with such enthusiasm and expertise. Thank You Amanda.**

# MEMORIES OF PAST CORONATIONS

Clive Rainbow recalls that on Coronation Day 1953, I was in a school group of 28 boys – selected by lottery – and two masters, standing on the Embankment, nearly opposite Scotland Yard; it was 07.30 am. We had boarded a boat at Cadogan Pier on the Battersea side of the Thames and disembarked minutes later at Westminster Pier where officials of the London County Council formed us into a column two abreast and led us, past the lavatories, to the steps that took us up to our section of the pavement.

2nd June 1953 was overcast, and it drizzled intermittently all day. But we all had our raincoats (and School caps) and something to eat. The LCC supplied each of us with a fruit drink and an iced lolly. (We had to carry an identity card and no flags or periscopes were permitted.) HM the Queen and the Duke of Edinburgh, preceded by 1,000 guardsmen, were due to pass by in the State Coach – which we now know to be inordinately uncomfortable – at 10.30.

At about 10.15 a party of schoolgirls arrived. They were so late that there was no time for them to reach their proper place. We were asked to step back and allow the girls to stand in front of us. Our reserves of gallantry were sorely tried.



I had just turned 16. My birthday present was a Kodak Duaflex, the final refinement of the Box Brownie. It was a point-and-shoot camera: the focus; the shutter speed and the aperture were all fixed but it had a very big, brilliantly-clear, viewing screen on the

top; it worked best if you held it at chest-height. I soon found that those girls made it impossible for me to photograph Queen Salote of Tonga – who, despite the rain, had ordered the roof of her carriage to be folded away 'because the people want to see me' – and the Queen's Procession was due 15 minutes later.

I was tall for my age. It struck me that I could still use the viewing screen if I turned the Duaflex upside down and held it, at arm's length, above my head. With seconds to spare I discovered where the shutter button was, held the camera really firmly, and clicked.



Queen Salote of Tonga

- Sally and John Codling still have certificates commemorating the coronation of Queen Elizabeth II which were presented to them as children – by the People of Bishop's Cleeve (Glos.) and Haddenham (Bucks) Coronation Committee respectively.

- Sheila Clay still has a commemorative mug and miniature coach and a miniature coach and horses given to her at the time – she watched the Coronation on her grandparents' black and white TV.

- Loiz Bale recalls watching the 1953 Coronation, aged 13, standing on the Embankment in the rain.

- Pooh Ballantyne recalls "We had tickets for seats in Oxford Street in front of John Lewis. As we had to be seated very early we stayed in a hotel in London. This in itself was very exciting. We were told to have a big breakfast before we set off! So with the weather very dreary but excitement building, we clambered high up into our seats. We were well supplied with TV monitors to watch the coronation and, of course, to have the announcement that Everest had been conquered. Like so many others, my memories of the day is the procession with the huge beaming Queen Salote in an open carriage, rain pouring down, cheering everyone and everything even if we didn't know who they were, and the laughter and good humour. We all became 'best friends!!!'

- Pauline Flynn was 'Lady in Waiting' and her sister the 'Queen' at their street party – Pauline is on the left and her sister on the right of the photo. She remembers eating jelly and blancmange, homemade cakes and weak lemonade at the party.



- Philip Suter says he was definitely too young to remember much but remembers growing up with a selection of illustrated commemorative biscuit tins.

- Paul Rogerson has a framed signed photo of the Queen, Prince Philip, Prince Charles and Princess Anne, one of which was sent to every school in the United Kingdom – it eventually found its way into the house of his grandfather (the local secondary school headmaster). Paul says the coronation was the first television programme he ever saw.

- Irene Clarke says 'In 1953 I was 7 years old, and in The Ingham Infirmary, a hospital in South Shields, Co. Durham. I had a fractured femur, having been run over by a motor bike, staying at my grandparents in Newcastle. There were 2 rows of 12 children in beds on opposite sides of a long ward. We were all pushed to the centre in a semicircle of rows of beds in front of a tiny television placed on top of a cupboard to watch the coronation. It was very exciting as we were told we would be all getting an ice cream at the end!'





## Pat Rogers

9th December 1931-18th April 2023

*by Steve Rogers with extracts from a tribute to Pat by Pam Bowell*

Born into the Jackson family on 9th December 1931 in Houghton-le-Spring in County Durham, she was the daughter of a housewife and a coal miner and was the fifth of what became a family of six. She had been

preceded by Mary, Jack, Nan and Hilda. Pat then arrived on the scene to be followed four years later by Dorothy.

The area around Houghton at that time was very industrialised and this was to become the cause of the family's move south. A move that would never have been possible without the integral part played by Pat. By the late 1940's the older three siblings had all married and moved away from the family home, whilst the younger three remained, but the big upheaval and relocation was soon to be underway.

When 12 year old Dorothy became seriously ill, the doctor's view was that a move away to an area with a more benign environment would be essential to help her get better. By this time, her father was working for Turner and Newalls - a huge manufacturing company in Washington, County Durham which had a number of plants across the country including one in Slough. The owner, Sir Samuel Turner, posted an in-house advert for a motor engineer at the Slough factory. Significantly, there was a possibility of a tied cottage if the applicant had someone in his family who could be in service at his country home.

The country home was North Dean House, and the tied cottage was Margaret Cottage at the bottom of Piggotts Hill. Pat's father seized the chance to relocate the family to an environment conducive to Dorothy's

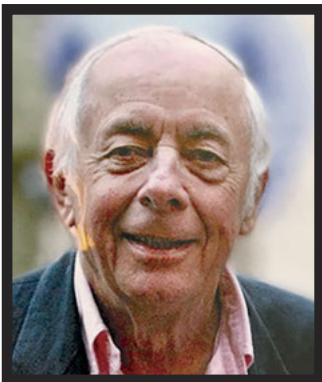
wellbeing and secured the position. The question was then who to put into service?

Dorothy was too young and Hilda was already working so that left Pat who was just of an age to enter working life. Pat remained in service at North Dean House until she was 21 then left to find other employment in High Wycombe. Being in service hadn't afforded much opportunity for a social life, she made the most of it, especially when meeting local lad John Rogers. They married on 23rd October, 1954 and their son was born five years later in June 1959.

Pat was a stalwart and proactive member of the Village Hall Committee and of the annual village fete, serving in many capacities to ensure that the events at the heart of the village were as well organised and successful as possible. She used to make cakes for the fete teas which were always very popular. She and John stepped down from the committee in 2005. As well as being on the Village Hall Committee, Pat was also a dedicated fund raiser for Cancer Research.

As Pat grew older, she had increasing health issues but to them she brought the rod of steel that in the women of the Jackson family passes for a backbone. She was determined and endured pain by working through it. She did whatever the doctors recommended. She made sure that she exercised when waiting for her hip replacement surgery even though it was excruciating and continued to do so afterwards, to ensure her rehabilitation progressed and was maintained. Pat relished the little victories that this brought to her, and was delighted when she became enough she could go out to lunch with her niece every now and again.

In face of difficulty, even in her last illness, Pat always said, "We just have to get on with it". Pat had a good life, a life well lived and we will miss her.



## Stan Bale

April 1937- 2023

*by the Bale Family*

Dear Stan died during Easter this year and is greatly missed by family and friends.

He was born in April 1937 in Neath and spent his early years in Tenby and then Brighton before

the family moved to London where he finished his education at Sloane Grammar School in Chelsea. He served his National Service in the Royal Air Force.

On discharge from RAF, Stan applied to and was successful in joining the BBC Outside Broadcast Department. He had a very fulfilling and successful

career as a cameraman covering all aspects of our national life; be it Royal Weddings, Her Majesty's Christmas Broadcasts, Winston Churchill's Funeral, Grand Nationals, Cup Finals, firework displays, golf tournaments, Eurovision Song Contests, Wimbledon tennis tournaments, State Opening of Parliament or the 200th Anniversary of the Bolshoi Ballet in Moscow.

He revelled in this amazing job but then his sight proved problematic and he was diagnosed with MS. He faced this with quiet courage and managed to get involved in a local group trying to establish a Centre for MS at Wendover.

Stan was invited to join the Worshipful Company of Clockmakers and later became a Livery member and

secured the Freedom of the City of London.

Stan was always patient and courageous with the challenges he faced and friends and colleagues were so kind in their support. He was always excellent company with a twinkle in the eye and great sense of humour. He involved himself in many Speen activities serving

on the Village Hall Committee and Fete Committee and instigating with fellow Rotarians a yearly musical evening with his great friend Martin Hart.

Stan was a lovely man who had an amazing career and a loving family life - he is sorely missed by many kind folk.



## George William Butler

12th May 1934 - 10th May 2023

by Catherine Butler

George was born in Staines, Middlesex, on 12th May 1934, and left us just two days short of his 89th birthday.

He had a happy childhood and

used to go with friends to Speedway racing and never missing a Brentford football match. He left school at 15 and worked in a small local newsagent's shop until he was called up for National Service. He signed on with the R.A.F. for three years and was posted to what was then Bomber Command at Walters Ash – it was while there that he met Catherine on a blind date.

After being demobbed and working back in Staines, he travelled weekly to see Catherine by No. 441 Greenline bus. They were married in Speen Chapel (Catherine having been born and brought up in Rose Cottage, Hampden Road) on 9th February 1957. They started

married life with George managing a shop in Feltham, then back in Staines, finally saving enough money to buy their own shop in Reading. Following the arrival of Adrian and then Wanda, they moved to Flackwell Heath to be nearer Catherine's mother who was then on her own, also at this time increasing their family with the arrival of Hazel.

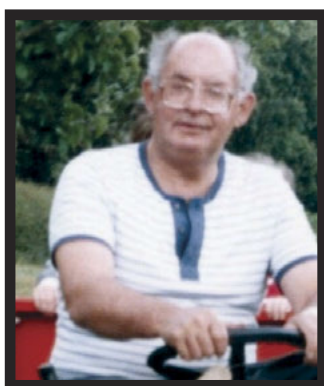
George and Catherine moved to Rose Cottage, Catherine's family home, in 1987. He loved his birds, his garden (buying sunflower hearts by the 30Kg sack), and anything to do with nature.

By this time the family were spread to Wales, Scotland and the U.S.A.; George had seven grandchildren who he loved to bits. He and Catherine travelled to Australia, New Zealand, Costa Rica and of course many times to stay with Hazel and her family in Texas.

As George got older and had various health problems, all he wanted was to spend his last days in Rose Cottage – and so he got his wish.

## Eric Cash

by Christine Ryman



Eric Cash - a long time villager of North Dean from 1983-2008, sadly passed away a week after his beloved wife Lilian's funeral in February 2023. He and Lilian were very active members of North Dean village and almost since their arrival became members of the Committee. Their

dedicated contributions to the village over the years have benefitted all the community. Eric's favourite village events were "Breakfast on the Hill" and the annual village fete, where he especially loved entering the baking competitions, and he also was, on countless occasions, a judge in many of the other competitions. Although Eric & Lilian left the village in 2008, they considered North Dean their happiest years and many of us who know them will always appreciate their generosity with their time to the village. Eric will be remembered with gratitude and great fondness.

# plugs

Electrical

Domestic & Commercial

Installation & Maintenance

Inspection, Testing & Fault Finding

Electric Vehicle Charging Points

Garden Lighting & Outbuilding Supplies

Fuse Board Upgrades

Call Tony on 07944 162958  
email [tony@plugs.me.uk](mailto:tony@plugs.me.uk)  
visit [www.plugs.me.uk](http://www.plugs.me.uk)





# WELCOME TO YOUR NEW LOCAL PUB



COME AND JOIN US AT *the* Gate  
PUB & DINING

DELICIOUS NEW MENU • KIDS PLAYGROUND • FUNCTION ROOM HIRE • DOG FRIENDLY  
• LIVE EVENTS • CURRY CLUB

Our Annual Meeting is now held in February which gives us a chance to reflect on the past year and plan for the future. One decision made after a short talk at that meeting was to support the Chilterns for Ukraine Charity. This is being done by holding a raffle at some meetings with a prize donated by a member. So far we have had a good response and hope to raise a healthy sum before the end of the year.

Since then we have had speakers on subjects as varied as building a show garden, tea growing and drug trafficking in the Caribbean. We also had a fitness evening with straightforward everyday exercises that can help all of use stay active whatever our age.

As our June meeting was 2 days before the coronation, we toasted HM King Charles in our patriotically decorated hall.

We continue with our programme of events between meetings when we have made



garden visits, been to a production at Wycombe Swan theatre and been out for lunch at local venues. Our Summer Social was

a Cheese and Wine Evening with a table quiz which as usual produced some hilarious answers in some categories. A brave team entered the County WI Quiz and finished in a creditable fourth place – our highest ever placing.

This year's Resolution at the National Annual Meeting was aimed at promoting healthy rivers, lakes and canals in the country and was passed by a very large majority. This means we now have a mandate to take direct action to keep watch on river health as well as lobbying MPs, councils and water companies to take action.

We entered into the spirit of Speen fete again with a circus backdrop to the refreshment area and big bow ties for all the helpers. As usual the home made cakes were soon being bought and enjoyed along with the tea and coffee. Warm work on a humid day!



Our programme for the rest of the year is in this edition of the SNDN and also on the Village website. Do look at our page there for more information about WI – or why not come along to a meeting in which you are interested and see what we have to offer?

[speenwi@gmail.com](mailto:speenwi@gmail.com)

## RECIPE

Mandy How

### *Pina colada meringues - A taste of summer with the freshness of mint*

*Serves 6 - 8*

#### *Ingredients*

- 400g can of chickpeas. Once you've used the aquafaba liquid from the can of chickpeas, the chickpeas could be used to make houmous or add them to a salad.
- 100g caster sugar
- 300g prepared fresh pineapple, cut into small chunks
- 2 large ripe kiwi fruits, peeled and cut into small chunks
- 200g no-added-sugar coconut flavoured soya yogurt
- Roughly chopped fresh mint to serve.

Preheat oven to 120°C/fan 100°C/gas ½ and line baking sheets x 2 with baking paper or reusable silicone baking mats.

Drain the chickpeas over a bowl and pour 100ml of the drained liquid (called aquafaba) into a large bowl. Whisk the aquafaba with an electric hand whisk until



soft peaks form. Add the sugar a little at a time, whisking constantly, until the mixture is thick and glossy - this might take up to 10 minutes.

Spoon the meringue mixture onto the prepared baking sheets to make approximately 6 to 8 10 cm rounds.

Bake for 1½ hours or until crisp, then turn off the oven and leave the meringues to cool completely.

When you're ready to eat (and not before, as the meringue may not hold

up), put each meringue on a plate. Top with yogurt and scatter the fruit on top and around the plate. Finally scatter over the chopped fresh mint.

Although the meringues take time in the oven they can be made in advance and store well in an airtight tin.

Adapted from "va va vegan" cookbook 2021



# SPEENFESTIVAL

Speen Festival arrives in Speen on August Bank Holiday weekend. The marquee will be up for 'Production Week' as our community show puts the finishing touches to Yellow Brick Road, our 80's musical mashup of Wizard of Oz. We then have 2 weeks of brilliant events created by your friends and neighbours, demonstrating their skills and talents. Look out for the Speen Festival programme through

your door and the opening of our online Box Office to secure your tickets. We still need lots of volunteers to do front of house, car parking, first aid, bar services and more so please get in touch with [admin@speenfestival.org](mailto:admin@speenfestival.org). You can keep up to date with Festival news on our website [www.speenfestival.org](http://www.speenfestival.org) or via our Instagram or Facebook page @speenfestival.



**Saturday 26 August**  
Survival Night

**Saturday 2nd September**  
Kids Baking

**Saturday 2nd September**  
SHH Hollywood Disco

**Sunday 3rd September**  
Meditation Masterclass

**Monday 4th September**  
Creation Station (kids craft)

**Monday 4th September**  
Yoga

**Tuesday 5th September**  
Jazz night

**Wednesday 6th September**  
Yoga

**Thursday 7th September**  
Yellow Brick Road

**Friday 8th September**  
Yellow Brick Road

**Saturday 9th September**  
Sourdough Workshop

**Saturday 9th September**  
Yellow Brick Road

**Sunday 10th September**  
Yoga

**Sunday 10th September**  
Heritage Walk

**Sunday 10th September**  
Toddler Music

**Sunday 10th September**  
Ensemble La Notte

**Monday 11th September**  
Cake Decorating

**Tuesday 12th September**  
AI Discussion

**Tuesday 12th September**  
SEAG Rewilding

**Wednesday 13th September**  
Realm of the Tiger

**Thursday 14th September**  
Viola Concert

**Friday 15th September**  
Bar Night - Notflix and DJ set

**Saturday 16th September**  
Lampshade Workshop

**Saturday 16th September**  
Ukrainian Headress Workshop

**Saturday 16th September**  
Comedy Night

**Sunday 17th September**  
Prom on the Playing Fields



**VILLAGE**  
**ENVIRONMENTAL SERVICES**  
**DOMESTIC DRAIN SERVICES**  
**DENNIS COOK 07850 635 844**

# SPEENFETE

Helen Davies & Clare Morris - Co-Chair, Speen Fete Committee

## *The Circus came to Speen and it didn't RAIN!*



Once again, Speen Playing Fields were filled with the sounds of music, laughter and chatter as the annual fete took place. With a circus theme our Ringmaster Ian Waterman led proceedings opening the fete with Jess the stilt walker.

Aerial acrobat Sabine entertained the crowds with displays of both aerial hoop and silks whilst Speen fete traditions continued with music by Martin Hart and his band and of course, Speen School's Country Dancing display. The community bus and team attended to tout its service, whilst Speen Festival had a display about this September's event and the Heritage Group showcased the history of Speen Playing Fields. Helping Hospices had a large offering of books and plants for sale.

All the usual sideshows filled the field from coconut shy, to hoopla and tombola whilst new game of two penny drop proved a challenge. The younger children appreciated the return of face painting after its Covid interlude, proficiently run by the Speen Teens, whilst crafts, games and 'Cheeky Dog' the magician helped to keep them entertained.

Crowds were fed and watered by a delicious BBQ run by the Church, the W.I. teas and beautiful selection of homemade cakes, ice cream van and bar. Both still managed to

do a trade despite the threats of rain throughout the afternoon. Fortunately, the threatened storms passed us by.

Proceeds of the fete are split between all eleven organisations taking part, with the chosen charity this year being Speen School. They will receive a larger share which will be used to develop their playground facilities. We are still tallying up the tokens, but it seems to have been successful and we will update readers in the next edition. A key part of its financial success is the income generated from advertising in the program so thanks to all those businesses who placed adverts. Please support these

local small businesses, and mention the fete, particularly if you are using them because of the advert you have seen.

Finally, we can't end this article without saying a huge thanks to all those involved in helping to make the fete happen. Not just the village organisations and committee members, but the many individuals who sell advertising, deliver leaflets, collect tables, assemble gazebos, count tokens, run stalls and all the other jobs beside. Thank you.

We look forward to seeing you at next year's Speen fete on 13th July, 2024.

The Grand Draw had numerous prizes generously donated by local businesses and our village organisations. A list of prize winners is below:

- |                                 |                      |
|---------------------------------|----------------------|
| 1. £200 cash                    | Maureen Laing        |
| 2. £75 M & S voucher            | Judy Redrup          |
| 3. Hampden Arms meal            | Martin Hart          |
| 4. Darvills Farm voucher        | Sandy Mitcheson      |
| 5. Roald Dahl Golden Ticket     | The Winson Family    |
| 6. £40 National Gardens Voucher | Sheila Clay          |
| 7. Tennis practice Sessions     | Rebecca Waldon       |
| 8. Barrow of Booze              | Dean Tregoning       |
| 9. Basket of Fruit              | Clare Morris         |
| 10. John Lewis voucher          | Jess Taplin          |
| 11. Bouquet of flowers          | Anne Myers           |
| 12. Toy Hamper                  | Julia Gater          |
| 13. Plant                       | Kate Vale            |
| 14. Luxury Mini Hamper          | Louise Brookes-Usher |
| 15. Chocolates & Prosecco       | Wendy Sponson        |
| 16. 'Leaves of Time' book       | Jacqui Laing         |



# M. R. COLLINS

## GARDEN CONSTRUCTION

Est 1979

Driveway, Paving, Brickwork, Fencing  
Groundworks, Excavations, Operated  
digger hire.

We specialise in Block paving and all  
types of slab laying Indian stone and  
concrete offering a start to finish service  
inclusive of excavations muck away,  
supply and fix.

For estimate Phone: 01844 346360  
Mobile: 07774 256732



All Domestic & Trade  
Customers Welcome

- Fencing, Gates,  
Sheds & Decking
- Lawn Mowers &  
Garden Machinery
- DIY & Garden Tools  
Ironmongery
- Compost, Bark &  
Lawn Feed
- Calor Gas, Coal, Salt,  
Logs & Kindling
- Servicing, Repairs &  
Spare Parts



## FENCE PANELS

Quality fence panels made in our own workshop

Local Delivery  
No Minimum Order



You can now order online at [www.briantsltd.co.uk](http://www.briantsltd.co.uk)  
01844 343663  
Thame Road, Longwick, Princes Risborough. HP27 9SG

**STIHL** **HONDA** **BRIDGE & STRATTON** **HAYTER**  
POWER EQUIPMENT



# Manor Garage

 **MOT Testing**  **Diagnostics**

 **Servicing**  **Air Conditioning**

 **Repairs**  **Tyres - Exhausts - Batteries**

 **Electric & Hybrid Vehicles**

 **01494 564222**

 **[dnaautos243@outlook.com](mailto:dnaautos243@outlook.com)**



## LACEY GREEN PARISH COUNCIL

*Roger Craft and Philip Suter – Councillors*

### Grant applications

The Parish Council has introduced new rules for any grant applicants for events. The application must be in advance of an event or funding purpose and not retrospectively. Forms can be downloaded at <https://www.laceygreen-pc.org.uk/community/>

### Street signs

If you have a hedge that covers a street sign or speed limit / no through road sign, as we are in the middle of the time of year there is a lot of growth.

We are experiencing more and more delivery vehicles in the area so if your property has one of these signs outside that could get overgrown by your hedge, please can you make sure that the sign does not get covered by foliage.

### Speed Watch

Speen has its own MVAS – Movable Vehicle Activated Sign for warning vehicles they are exceeding the 30mph limit unit.

Unfortunately, due to vandalism within Speen and neighbouring villages, local MVAS units have been out of action for over a year now. However, all MVAS units in Lacey Green Parish have now been made vandal proof, we hope, and we can now again obtain readings of both numbers of vehicles and the speeds they are travelling through the Parish.

Speen's MVAS unit has been re-enforced and will move around the two locations on Hampden Road and one on Chapel Hill recording the number and timings of offending vehicles exceeding the speed limit. Data collected will be reviewed.

### Dog Fouling Signage

The dog warden visited Speen in late March and fixed stick-on signs to a number of posts in the village. The Parish Council was supplied with a further supply that has also been utilised. One area that needed signage was at the school end of Grubbins lane and an A4 size reminder sign has been put up there.

### Gigaclear Build Update

Various areas in the past months have been subject to internet fibre ductwork installation in roads and pathways on behalf of Buckinghamshire Council by Gigaclear.

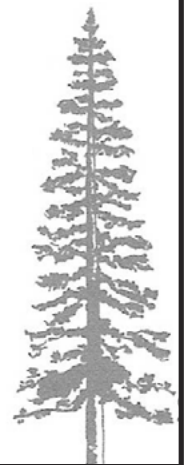
Dates for further works by Gigaclear are provisionally set for 31st July to 11th August for Hampden Road, Chapel Hill, St Peters Close and Abbotswood with multi-way signalling in place.

### Nick Higgins Forestry & Fencing Contractor

m. 07768 383418  
t. 01494 488835

45 Great Hampden  
Bucks  
HP16 9RJ

Seasoned logs  
available



## COUNCILLOR DAVID CARROLL

Dear Residents

I would like to update you on various issues.

The Bucks Council have appointed new contractors for highways so hopefully the backlog of works will be completed, it's been a very frustrating time for our community.

Can I please ask residents to report any issues regarding the highway or paths on the fix my street council website so it's then noted and highlighted for future reference.

Many residents have contacted me about speeding through our area and I certainly pass those concerns on to the Police.

Can I thank residents who contact me regularly on various issues and every one who supports our community in so many ways.

*Regards David.*





# CG Tree & Garden Services

Tree surgery & felling

Fencing

Hedge cutting, topping & turfing

Woodchips & firewood for sale



*Free estimates • qualified staff • fully insured*

Please call

07798 896380

## *Making bed springs out of woodchip*

Our ambition to regenerate our farm's hedgerows is well underway. The winter months have seen us clearing, chopping, and chipping the impressive quantities of brash, stored in these woody edges of the farm. Although wrestling with spikey hawthorn has its frustrations, we've come to appreciate the possibilities presented by the branches that we've been liberating from the hedgerow.

Deciduous tree branches, less than 7cm in diameter are known in the wood chip world as ramial (referring to branch). They are the youngest, most vigorous growing part of a tree, high in nutrients, and when chipped into ramial wood chip (RWC) and used as mulch, are a feast for beneficial soil organisms. This in turn presents an unexpected opportunity for holding more water in the soil.

I've been learning about soil health and the concept of the soil carbon sponge from the work of Walter Jehne ([www.regenerate-earth.org](http://www.regenerate-earth.org)) a septuagenarian Aussie soil microbiologist, with an encyclopaedic knowledge of the 'land down under' our feet. He describes how soil microbes, take plant sugars, such as that found in RWC, and turns them into stable soil carbon. This organic matter acts like bed springs between soil mineral particles, creating an airy, sponge like structure that allows water to infiltrate and be stored in the soil. This in turn sustains the longevity of plants.

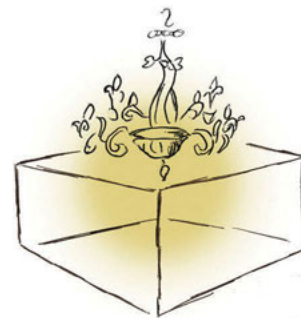
Our fearless friends Simon Bolton ([www.thebadgersgarden.uk](http://www.thebadgersgarden.uk)) and local Speen gardener Jeni Fairey helped us chip a mountain of wood through the winter months. Simon has been using the RCW to create paths through his no-dig edible flower beds here at the farm and Jeni has been using it to mulch the flower beds she looks after in the village. This remarkable by-product of hedgerow regeneration has also helped our newly planted orchard survive



this summer's dry months. We applied a six-inch-thick layer of RCW to the base of each tree back in February and we've found our heavy clay soil is already becoming less dense and water is penetrating deeper into the ground.

We have another long stretch of hedgerow earmarked for coppicing this year, and undaunted our trusty wood-chipper will be fired up into action. We need more carbon bed springs to build soil and its resilience to climate extremes and wood chip appears to offer one way of contributing to this process.

## These Four Walls



- Painting
- Decorating
- Decor
- Interior Design

Rachael

07956 250031

[info@thesefourwallsinteriors.co.uk](mailto:info@thesefourwallsinteriors.co.uk)



# A. ELLIS

## *Tree Surgery*

Fully Qualified and Insured Tree Surgeons



We undertake all aspects of  
hedge trimming and  
tree surgery

For a free, no obligation  
quote please contact us

**T: 01494 817234    M: 07709 491589**

**E: [info@aellistrees.com](mailto:info@aellistrees.com)**

**[www.aellistrees.com](http://www.aellistrees.com)**

For fencing enquiries call Mike on:

**T: 01494 868466**

# DOWN ON THE FARM

Gill Kent

Not much has changed since our report on the Farm in March last year. The farming industry still awaits the final details of the government's "public money for public good" replacement for the subsidy which kept so many farming businesses viable and the war in Ukraine is unresolved leaving grain and fertiliser supply chains in a state of flux.

Charles has sown some wild flower plots (in the field by the Harrow). In various fields he has also planted a considerable length of mixed hedging plants, suitably protected by new fencing against damage by grazing cattle. This work is grant aided but sadly does nothing to promote income streams for the business. To maintain the image of "rewilding" and dis-intensifying and to qualify for other support measures the use of fertiliser is not allowed. The chalk banks of the Chilterns are composed of poor quality soil and very little grass grows on them without being fertilised so Charles has decided to stay out of the government schemes so that he can feed the grass and the beef animals have something to eat!

As we reported last year, since the cows were sold a small herd of beef animals has been kept on the farm. Sadly it is again plagued by the dreaded TB, an outbreak that has so far led to the slaughter of 15 more animals. Both the large scale local dairy farmers are also infected and all the businesses are working under the draconian movement restrictions imposed by DEFRA. None of the

farms import stock and there is no doubt that animal to animal is a major source of the spread of the disease but none of the businesses have any neighbouring animals from which the disease could be caught. We are convinced that the only source of the infection is the wildlife, mainly badgers, for which there are no legal means of control, and deer.

Unfortunately the farm's arable equipment has reached the end of active life so crops are currently grown by a local contractor as the cost of running the huge machines employed doing this work can only be justified when spread over a large acreage.

The sale of the cows and removal of crops elsewhere for drying and storage has left the farm buildings empty so some other forms of income generation are now being explored.

We came to North Dean in 1960 and rented the Old House Farm from Beechdean Farms Ltd; in 1964 Donald Campbell bought Home Farm and in 1971 we went into partnership with him and farmed the two farms as Beechdean Farms. In 1975 he sold North Dean House which over the years has undergone many major changes. Sadly two years ago its much loved most recent owner, Desmond Ryman, died and the house has been sold to locals whom I am sure will maintain the traditions established by the Campbells and the Rymans!

**Paul's Plumbing**  
**07786 175123**

**PLUMBING**

**Plumbing & Problem solving**  
**Friendly, Reliable & Local**

Bathrooms • Kitchens • Taps • Leaks  
Tanks • Radiators • Valves • Pipework

**Based in North Dean.**  
**Local to Speen, Naphill,**  
**Walter's Ash, Lacey Green,**  
**Hampden, Hughenden**

Paul Newman Ltd. **07786 175123** | 01494 565573





Handmade in  
**Princes  
Risborough**  
with a **10 year**  
guarantee

# Inspired by nature

**Hypnos, a local award-winning bed manufacturer, has been handcrafting bespoke, made-to-measure mattresses and beds in Buckinghamshire for over 100 years.**

Every bed produced is created from the finest, natural and sustainable materials and is 100% recyclable at the end of its life. These quality beds come with a 10 year guarantee and a royal seal of approval from Her Majesty The Queen.

Hypnos' responsible approach is emphasised by being the world's first carbon neutral bed maker; and working with Red Tractor's assured farms and farmers to source 100% traceable British Wool for its Origins Collections.



# HYPNOS®

THE MOST COMFORTABLE BEDS IN THE WORLD

**Visit our Showroom – OPEN all day Monday to Saturday**  
Longwick Road | Princes Risborough | Buckinghamshire HP27 9RS  
T: 01844 348200 | [hypnosbeds.com](https://hypnosbeds.com)

## *The New Weather Vane*

The skyline over the Village Hall has recently changed following the erection of a weather vane highlighting the heritage of the village. The vane, designed by myself, has been forged at Gomme's Forge in Loosley Row. It features one of the "Speen Bodgers", working at his pole lathe. The weather vane was paid for by Speen Heritage Group and contributions towards the costs of erecting the sign were provided by David Worlock and Lacey Green Parish Council.



bodgers produce was sold to the furniture factories in High Wycombe which were famed for their Windsor chairs. In later years workshops for turning legs and making chairs were developed in the village itself. Far from producing "bodged" work the men were in fact highly skilled and very hard working.

Examples of bodgers workshops in the village are still present. The sheds at the rear of the Old King George were once used by a chair maker and the timber clad structure

The word "bodge" in the Collins English Dictionary is defined as a verb meaning to make or repair something in a way that is not as good as it should be. It defines "bodger" as a worthless or second-rate workman. However, in the Chilterns the word bodger has for many years had an entirely different meaning. It refers to the workmen who were involved in the traditional wood-turning crafts conducted in the woodlands around Speen and elsewhere in the beechwoods of the Chilterns through the 1800's and up until about 1950. The men worked in thatched A-frame huts in the woods using a pole lathe to turn chair legs and braces from green timber. Huts were established close to stands of timber that the bodgers had purchased at auction. Buying timber was a major annual social event which took place at the Hampden Arms. The first landlord of the pub, Free Turner, was also a sawyer, wood bailiff and timber merchant. The

at Spinning Wheel Cottage, in Studridge Lane, is a modern rebuild of an old wood-turning workshop once operated by the Plumridge family. The 1891 census for the village shows 13 men working as sawyers or carpenters, 18 as wood turners and 12 as chair makers. At a similar time many of the women in the village would have been engaged in lace making albeit this industry was in decline by that date. After 1900 increasing mechanisation in factories in High Wycombe and imports of cheap American timber undercut the local bodgers also sending this industry into decline. The last two local bodgers, the Dean brothers, ceased work in the late 1940's. Nevertheless, the wood turning industry was a crucial part of our village history, which is now reflected in the weather vane at the village hall for posterity.

**Anyone interested in joining Speen Heritage Group should contact me - [psymonds590@gmail.com](mailto:psymonds590@gmail.com)**

## WHY VOLUNTEER

Sue Taylor

If you live in Speen you'll know that our thriving village organisations and events like Fun Day, Fête and Festival rely on superb voluntary workers. Residents also help people beyond Speen, sometimes in critical situations like homelessness,



food shortage or debt, working with organisations like those listed here. It's often an eye-opener, bringing unexpected rewards and the chance to make a big difference.

- **Citizens' Advice Bucks** – Giving free advice on debt, benefits, housing, employment and consumer problems. **Contact: 01494 328121 or see [www.citizensadvice.org.uk](http://www.citizensadvice.org.uk)**
- **One Can Trust** – Sorting, packing and delivering emergency food parcels. **Contact [volunteer@onecantrust.org.uk](mailto:volunteer@onecantrust.org.uk) / 01494 512277**
- **Prestwood Area Community Transport (PACT)** –



# Award winning Design

Extension • Conversion • New Build

SQ4RE



Jeremy Symondson  
Foursquare Land Limited  
Old Smithy, Great Hampden,  
Buckinghamshire HP16 9RF  
jem@4squareland.co.uk  
tel: 01494 488877  
mob: 07789 201616



## TUDOR TRAVEL

*Taking you there in style*

22 – 33 seat Midi coaches for  
Group travel, Corporate events,  
Days out, Local and long distance.  
Fully licenced and insured and COVID compliant.  
Private & Business accounts welcome.

**MD**  
**COURIER  
SERVICES**

Offering a fast professional  
and reliable service at an affordable  
price, whether it's around the corner  
or across the country.

*We have you covered.*



**info@tudortravel.co.uk**  
**01494 488887 / 07771 881245**

## VILLAGE ENVIRONMENTAL SERVICES DOMESTIC DRAIN SERVICES

Proprietor: Dennis Cook  
Est. 1979

# BLOCKED DRAINS?

FAMILY RUN BUSINESS SINCE 1979

BLOCKED DRAINS CLEARED

REASONABLE RATES

CCTV DRAIN SURVEYS

NO EXTRA CHARGE FOR EVENING, WEEKEND OR BANK HOLIDAY CALLOUTS

FULL PUBLIC LIABILITY INSURANCE

## CALL US DAY OR NIGHT

**24/7  
CALLOUT  
SERVICE**



**07850 635 844** 01296 624 221 (MESSAGES)



Driving people to appointments or to visit loved ones in care or hospital. **Contact PACT: 07968 641427**

- **Risborough Area Community Bus** – Drivers serve Risborough town and nearby villages and offer regular outings. See [www.racb.co.uk](http://www.racb.co.uk)
- **School Governors** – Voluntary governors contribute to schools' and pupils' success, aiding decisions on teaching and learning, school budgets and senior appointments. **Contact** [enquiries@inspiringgovernance.org](mailto:enquiries@inspiringgovernance.org) / 0207 566 4880
- **SchoolReaders** – Hearing primary school children read improves confidence and fluency and inspires a love of reading. **Contact** [office@schoolreaders.org](mailto:office@schoolreaders.org) or see [www.schoolreaders.org](http://www.schoolreaders.org)
- **Silver Stories** – Listening to primary and secondary school children read over the telephone increases reading skills and creates intergenerational contact.

Email [info@silverstories.co.uk](mailto:info@silverstories.co.uk) or see <https://silverstories.co.uk>

- **Ukraine to Chilterns** – Offering homes for Ukrainian refugees and help to find schools, healthcare and jobs. **Contact** [info@ukraine2chilterns.com](mailto:info@ukraine2chilterns.com) or see [www.ukraine2chilterns.com](http://www.ukraine2chilterns.com)
- **Wycombe Homeless Connection** – Assisting and befriending homeless people and those at risk of homelessness. **Contact** 01494 447699 or see [www.wyhoc.org.uk](http://www.wyhoc.org.uk)
- **Wycombe Refugee Partnership** – Helping refugees and asylum seekers integrate, assisting with language, housing, education and jobs. Email [contactus@wycombe-refugees.org](mailto:contactus@wycombe-refugees.org) or see [www.wycombe-refugees.org](http://www.wycombe-refugees.org)

For the local volunteers' contact details,  
email [suetaylor1@btinternet.com](mailto:suetaylor1@btinternet.com)

## WILDLIFE WATCH

*Peter Symonds*

After a very dry February, March was the wettest for 42 years and this gave way to a relatively cold and overcast April. Since then however the Spring gave way to a dry Summer period with the hottest June on record having an impact on local wildlife.

The usual influx of ducks started in March as they seek out safe gardens to nest in. There were several nests in and around Abbotswood including three in our own garden. Most nests fail due to predation of eggs or newly hatched ducklings being led away beyond the relative safety of a quiet garden with a variety of local predators needing prey to support their own families. A Heron has been a regular visitor to our garden and kites have nested very close by but nevertheless 11 young mallard are nearly ready to fly off. Rabbits are also reported to have bred well in local hedgerows. Les Brown reported sightings of stoats and buzzards taking young rabbits near Spring Coppice Lane. A local fox family has raised at least one cub in a den close to housing near the middle of Speen. (See photo of mum and cub)

Other local breeding successes include Red Kites with several nests active around the village. Moorhens have done well in our own garden, 11 young surviving from an initial clutch of five and a second clutch of seven from the same parents. Both adults and the "teenagers" are now helping to feed the second brood. Three Green Woodpeckers on our front lawn included two newly fledged birds whilst young Great Spotted Woodpeckers have also been brought to our garden feeders. House Martins have reportedly done well down Highwood Bottom whilst further afield Grey Wagtails raised three young in Hughenden Park.



Peregrines in the centre of High Wycombe fledged two young whilst the town also has an increasing population of breeding Herring Gulls and Lesser Black Backed Gulls with some 15 pairs present. Other bird records include 3 Mandarin Ducks seen by Caroline Crossley in our local woods, a Cuckoo heard in Bryants Bottom in early June whilst a Tawny owl was reportedly regularly roosting on a chimney pot in North Dean. Further afield a Wryneck was recorded at Lee Common and a White Tailed Sea Eagle at Hyde Heath during April.

Craig Watson recorded 5 hares in one of the undisturbed meadows in North Dean in April whilst Jeremy Symondson highlighted the variety of wildlife that can be seen in June on Cardiac Hill (below the school). He recorded Marbled White butterflies attracted to the knapweed and ox eye daisies in addition to the usual display of Common Spotted and Pyramidal Orchids, with the chance of also seeing a hare or a fox. A somewhat similar habitat is being created at Chiltern Forage Farm, at the far end of Spring Coppice Lane. A London couple who purchased the pony pasture have been undertaking a rewilding project to create a hay meadow with lots of wildflowers interspersed with a few soft fruit trees and plants.

An open day in early July confirmed the presence of lots of butterflies – Marbled Whites, Ringlets, Meadow Browns, Small Tortoiseshells, Skippers plus a Roe deer with her fawn.

Please report interesting sightings -  
Peter Symonds 01494 488016  
[psymonds590@gmail.com](mailto:psymonds590@gmail.com)



# THE HARROW

*Serving great food 7 days a week*



**YOUR LOCAL, FAMILY AND DOG FRIENDLY PUB  
SERVING DELICIOUS, FRESHLY PREPARED FOOD,  
LOCALLY SOURCED REAL ALES  
AND A GOOD SELECTION OF WINES**



**FOOD SERVED:  
MONDAY-SATURDAY : 12NOON-9PM  
SUNDAY : 12NOON-5PM**



**QUIZ NIGHT TUESDAY 8PM**

*There's always something going on at The Harrow Pub,  
so get yourself down here  
and enjoy the beer, the entertainment and the company.*

**01494 564105**

**WARRENDENE ROAD, HUGHENDEN VALLEY, HIGH WYCOMBE HP14 4LX**

**[WWW.HARROWHUGHENDEN.CO.UK](http://WWW.HARROWHUGHENDEN.CO.UK)**

# SPEENHELPING HOSPICES

Supporting Helen House for Children, South Bucks Hospice at Home, Florence Nightingale and Rennie Groves Hospice Care

Grainer Suter • grainnesuter@googlemail.com • 07778803260

The **Charity Golf Day** on the 15th March at Burnham Beeches Golf Club was a real success. It was the first event of this kind organised by Speen Helping Hospices, and we were anxious, to put it mildly! However, thanks to Martyn Evans, husband of June a committee member it was a fantastic day. His organisation and attention to detail made this a very profitable fundraiser. We are very grateful to Burnham Beeches Golf Club who made us so welcome and to all our sponsors including local sponsors The Hampden Arms, Lloyd's Wines, Hildreths, Red Van Plumbers, Hypnos, Aston Hearing, Fine & Country and Lovell Fuels. Thanks also to Philip Suter and John Codling for their efforts to secure sponsorship for the event. To top it all the weather was perfect, probably one of the few good days in March. The final amount raised was £5,500.



Well done to Millie Walsh and Jessica Allen, two young friends who raised money for SHH selling lemonade, sorbets, cookies and cookie dough outside their house on Studridge Lane one Sunday afternoon in April. The girls raised £53, a brilliant effort. Thank you.

The sun shone for us again at the **Spring Lunch at the Horses Trust** on the 3rd May. This has traditionally been a highlight in the fundraising calendar and again this year lived up to its reputation. We are so lucky that the Horse Trust allow us free access to their beautiful barn,

as you can see from the photos below. Andrea Baganz-Pritchard from Helen and Douglas House for Children spoke very movingly about the work they do with children and their families and stressed how important the fund-raising efforts of groups like SHH are in the delivery of services. Andrea also presented SHH an award for raising £38,510 for Helen House since 2010.

Many thanks to Jane Marchant from **Alchemille Design** who sold a range of beautiful bedding plants and then donated a portion of her sales to SHH. Daniel Jackson of **Jackson and Company Eye Care** for two gift vouchers for sunglasses of £100 each. Kate Vale who supplied and made the sourdough for the lunch and Jeanne Hanford for her support on the day.

£2,950 was raised at this event.

**Jazz in the Park** : If this unseasonable weather was getting you down Great Hampden was the place to be, a real remedy for summer weather blues – four musicians, fizz popping, a picnic with a group of friends what more could you ask for.

What a fun afternoon despite one dramatic downpour halfway through which had us running for cover. Martin Hart and his group with Frank Walden on sax were terrific, they just caught the mood of the audience and played some great music, and the jazz fans appreciated every moment. We raised £1,500

**For information about all our events see page 5 and check out our website [www.shh-shop.org](http://www.shh-shop.org)**

**Don't forget if you would like to support or sponsor a fundraising event, please contact me.**

## SPEENFUNDAY

Saturday June 10th saw the return of another village favourite - the Speen Funday!

Returning despite popular demand and in a familiar deviation from sound judgement, the 2023 Funday committee rummaged into bin of pre-pandemic archives to prise out the Speen Ninja Olympic Trials; the SNOT Games.

Disturbing by name and nature, the 2023 games comprised the usual compendium of chaos and contests, starting with the ice-breaker of the all-hands-on-deck "rings game". Intentionally involving all team members, regardless of age, size, ability or enthusiasm, it acts as a gentle loosener. This year's round was no exception, so after a drawn-out practice go, the teams got firmly stuck in and really got the SNOT flowing.

Having retired after countless whistle blasts, Geoff the Ref was no longer officiating the contests this year. Thankfully (and in no way mirroring David Moyes following Alec Ferguson at Manchester United) Greg Cook was available to fill the gaping void. Thanks

to Geoff for his years of service and to Greg for getting stuck in so well.

The rings concluded after some shrewd joker playing. The theme of nose ran on through the remaining games. The pick of the bunch possibly being the sprout, egg and haribo catapulting. (Pick it, lick it, roll it, flick it). After some hard fought, competitive tests without any cheating or complaining whatsoever, the Red team triumphed. After a few years in the doldrums it was good to see them take it seriously and knuckle down.

The afternoon concluded with the ever-popular kiddie kurling. After a few phases of both self-propelled and tosser-assisted Kurls, it was tricky to pick a winner, but Toby Johnson edged the tight contest with his blend of distance, grace and style.

As ever with Funday, success is judged by the absence of fatalities - so another all around triumph!

Thanks to all the participants, organisers, bar staff and competitors.





# Looking Ahead to Winter

The colder months of autumn and winter can be a difficult time for older people and for those living alone.

Especially if you live in rural areas like the Chiltern Hills. Although our countryside is beautiful, accessing the outdoors, popping into Princes Risborough or making the most of our lovely countryside surroundings is much more challenging in the colder weather and when the darker nights draw in.

"According to Age UK, more than 2 million people in England over the age of 75 live alone, and more than a million older people say they go for over a month without speaking to a friend, neighbour or family member." Loneliness can be a real problem for those whose children have left home, their spouses or friends have passed away. Winter can be much harder for those living alone and if you don't get to see anyone or do anything, it can be very demoralising. And although it can seem daunting to ask for help, evidence proves that a companion carer - someone who visits regularly once or twice a week for a couple of hours at a time - can make a significant difference to enhance overall wellbeing and positive emotional outlook.

Sue is a companion carer for Ashridge Home Care and visits several people who live alone in Buckinghamshire. She says: "I have a great bond with my clients, we will sit and chat over a cup of

tea, discuss today's news, I can bring shopping and prescriptions with me." She continued: "They always open the door with a big smile knowing they have a visitor. Nowadays a lot of family live far away or are busy raising a young family. There's no shame in accepting help and companion carers can not only offer a great deal of practical support but are great company and a welcome distraction on an otherwise quiet day."

Now is the time to look ahead and consider how a companion carer could positively support you or maybe a loved one this winter.

**For an informal chat do call Ashridge Home Care on Tel 01494 917344.**



**Ashridge**  
HOME CARE

**Providing Outstanding  
Home Care**

**Call for a friendly chat on 01494 917344  
or visit [ashridgehomecare.co.uk](http://ashridgehomecare.co.uk)**

Ashridge Home Care specialises in providing highly personalised one-to-one care that enables people to remain in the comfort of their own home. It is one of the few care companies to offer both around the clock live-in care or visiting hourly care.



Jane Farley

with information about ponds from Katie Horgan, Rough Around the Edges Project Officer, Berks, Bucks and Oxon Wildlife Trust

## *In Praise of Berkshire, Buckinghamshire and Oxfordshire Wildlife Trust*

Members of the Speen community and Speen Environmental Action Group have been working together with Lacey Green Parish Council and BBOWT to improve the Studridge Lane Pond.

Alongside a valuable contribution from the Parish Council BBOWT have offered their advice, expertise and equipment plus providing funding for two days Chiltern Rangers time and 4 paid for workshops for members of the community. It is part of their Rough Around the Edges project, part of the Heritage Lottery funded 'Chalk, Cherries and Chairs Landscape Partnership Scheme. Details of forthcoming workshops are available. Please contact [seag@btinternet.com](mailto:seag@btinternet.com)

There was a modest clear up of the pond in February 2023 which will be followed by a larger scale one in August. With several weeks of dry weather and changes in the climate, ponds like this can be prone to changing water levels. While most aquatic wildlife is well adapted to these changes, more

extreme weather conditions can have increasingly negative effects on local biodiversity and our general environment. Sensitive management such as limited removal of some vegetation to keep areas of open water, maintaining patches of denser vegetation, and providing deadwood piles, can help to reduce these impacts. Volunteers will be needed for this second clear up, so please look out for details later in the summer.

BBOWT is our local wildlife trust – standing up for wildlife and wild places in your area and bringing people closer to nature. They helped to launch The Great Big Nature Survey this spring to hear people's views on some of the most important issues affection nature and wildlife. They run many nature reserves across the three counties which are open for visits, great for wildlife and research.

**Please consider joining BBOWT to support their brilliant work. Visit their website [www.bbowl.org.uk](http://www.bbowl.org.uk)**



## *Speen Spring Clean*

By Naomi Proudlove

Many thanks to all the wonderful Speenies who turned out to help out with the litter picking in early April.

It was wonderful to both continue the legacy of an annual village clean initiated by the Holmes and be part of a broader countrywide Great British

Spring Clean taking place across the fortnight. 30+ volunteers collected 23 bags of rubbish, some of which were then recycled, with the most unusual item being a pair of folded underpants! (Found by Toby Cook & Elsie Rogers, who seem to have a history of sniffing out underwear on our highways and byeways!)





# WHO'S WHO

North Dean Village Hall - Chair	Dick Pooley	01494 269615
North Dean Village Hall - Bookings	Jeremy Mudie	07880 785983
North Dean Village Fete	Dick Pooley	01494 269615
One Can Food Bank Trust - Trustee	Graham Peart	01494 488327
Pigotts 7 '48' Musical Evenings	Jeremy Hamilton	07834 224589
Speen Good Neighbours	Pat Richardson	01494 488627
Speen & North Dean Guides	Pauline Hall	01494 488372
Speen & North Dean News - Chairman	Jill Rogerson	01494 488315
Speen & North Dean News - Advertising	Tom Dent	01494 488943
Speen & North Dean Toddlers	Sandy Mitcheson	07747 635974
Speen Baptist Church - Pastor	Rev. Tim Deller	01494 488753
Speen Environmental Action Group (SEAG)	Jane Farley	07889 433630
Speen Festival	Cat Cook	01494 488939
Speen Fete - Chair	Clare Morris/Helen Davies	01494 488553
Speen Helping Hospices - Secretary	Maureen Laing	01494 488397
Speen Heritage Group - Chairman	Peter Symonds	01494 488016
Speen Marquee	Greg Cook	01494 488939
Speen Playing Fields	Tony Bobroff/Matt Davies	07768 330273
Speen C of E Infant School - Head	Lisa Davies	01494 488321
Speen School PTA - Co-Secretary	Charlie Harrison	07772 562979
Speen Stores	Ruban Kantharuban	01494 488258
Speen Tennis Court - Secretary	Philippa Lane	01494 488453
Speen Village Hall - Bookings	Sue Taylor	01494 488500
Speen Village Hall - Chairman	Bill Groves	01494 488180
Speen WI - Secretary	Jenny Pearce	01494 562333
St John's Parish Church	Revd Tony Bundock	01844 347741

## LACEY GREEN PARISH COUNCIL

Councillors for Speen

Roger Craft  
Philip Suter

r.craft@laceygreen-pc.org.uk  
p.suter@laceygreen-pc.org.uk

## HUGHENDEN PARISH COUNCIL

Councillors for North Dean

Simon Kearey

Simon.kearey@hughendenpc.org.uk

## BUCKINGHAMSHIRE COUNCIL

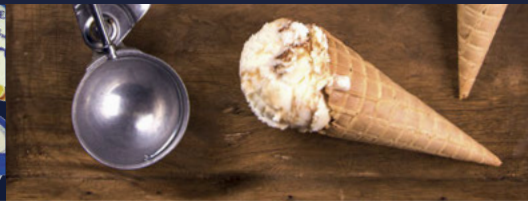
Councillors for Speen

Carl Etholen  
Shade Adoh  
Robert Carington  
Steve Broadbent  
David Carroll  
Clive Harriss

Carl.Etholen@buckinghamshire.gov.uk  
Shade.Adoh@buckinghamshire.gov.uk  
Robert.Carington@buckinghamshire.gov.uk  
Steve.Broadbent@buckinghamshire.gov.uk  
David.Carroll@buckinghamshire.gov.uk  
Clive.Harriss@buckinghamshire.gov.uk

# BEECHDEAN

## Farmhouse Dairy Ice Cream



Now available from  
**Hughenden Village Store and Coffee Shop**

- 130ml Beechdean Farmhouse 'Spoon in Lid' Tubs •
- Vanilla, Double Chocolate, Strawberry, Salted Caramel, Mint Choc Chip,  
Honey & Ginger and Lemon Sorbet

**Special Offers Available in-store!**

- 1 Litre Beechdean Farmhouse Tubs •
- 2 Litre Beechdean Farmhouse Vanilla Tubs •

**Hughenden Village Store and Coffee Shop**  
Coombe Lane, Hughenden Valley, High Wycombe HP14 4NX

 @HughendenValleyShop1



    
@BeechdeanGroup



**Opening Hours: Monday to Friday : 7.30am – 6pm, Saturday : 8am – 4pm, Sunday : 8am – 3pm**





# Prestigious properties require a tailored approach to marketing.

Experience our excellent custom service and let our  
in-depth local knowledge and expertise work for you.

Contact our team on 01844 343131

[fineandcountry.com/uk/southbuckinghamshire](https://fineandcountry.com/uk/southbuckinghamshire)

[southbuckinghamshire@fineandcountry.com](mailto:southbuckinghamshire@fineandcountry.com)

**FINE** & **COUNTRY**