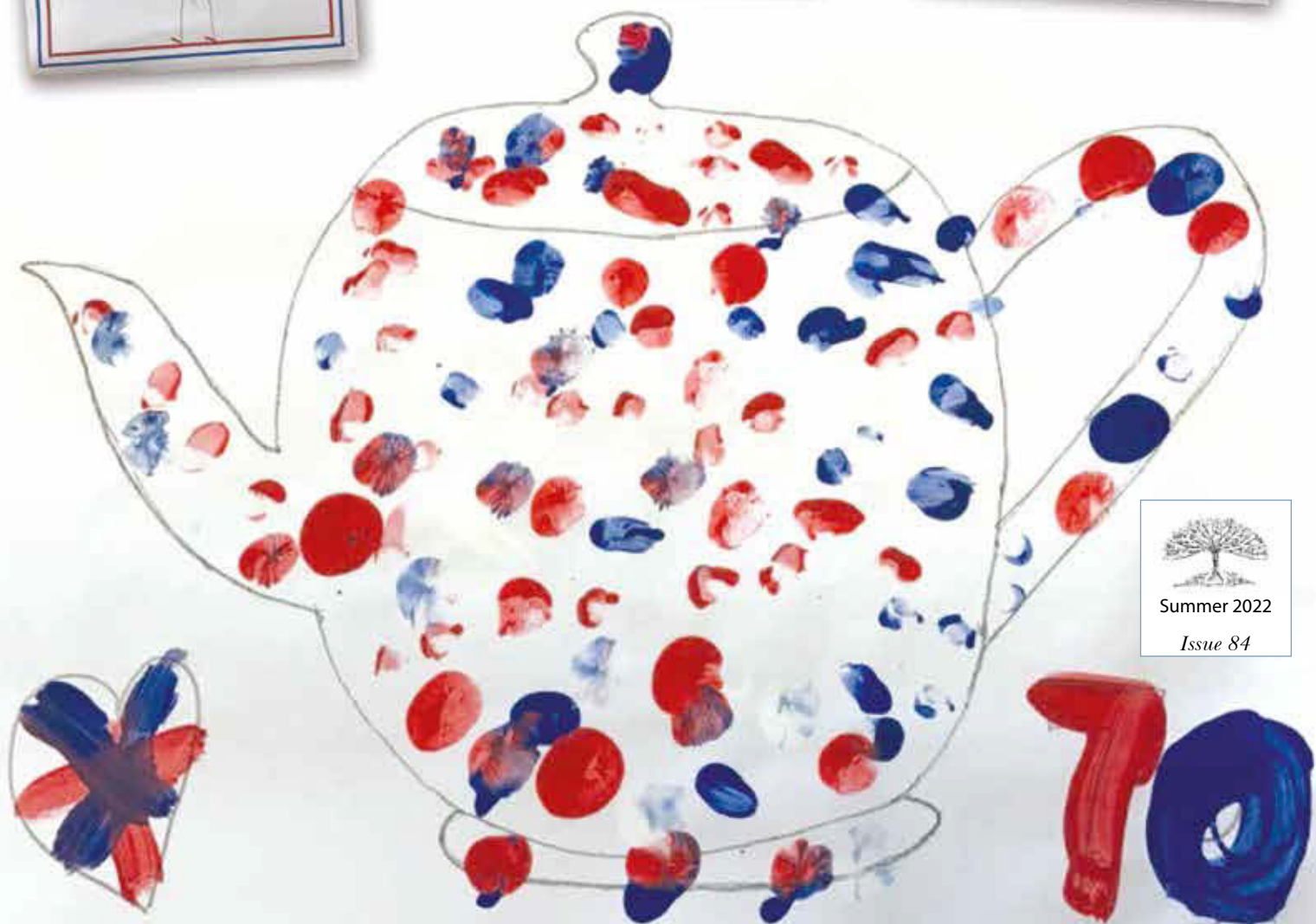


# THE SPEEN & NORTH DEAN *News*



Summer 2022

Issue 84



# simply beautiful gardens

Alchemille has been designing and creating beautiful, innovative, inspirational outdoor spaces since 2004.

From urban courtyards to country estate gardens, we can make the simply beautiful garden of your dreams a reality.

FROM CONCEPT  
TO CREATION



Image courtesy  
of T Pottinger

01494 488072 • 07909 936718 • [design@alchemille.co.uk](mailto:design@alchemille.co.uk)

[www.alchemille.co.uk](http://www.alchemille.co.uk)

## Get smart in your garden

From comprehensive plant care advice, to regular maintenance or a one-off project, our experienced team is ready to smarten up **your** garden.

For more information contact  
**Andy Merriman** on

**07827 290770**



*Working in association with Alchemille Garden Design*

# Welcome!

to the Speen & North Dean News Summer Edition, Jill and I are delighted to present to you this Jubilee issue.

Our villagers certainly know how to throw a good party and as you will see, we celebrated this historic event in style, minus marmalade sandwiches.

Thank you to the pupils from Speen School for sharing their fabulous artwork which has pride of place on the front cover.

It hasn't quite been the "flaming June" we had hoped for, but this has not dampened our spirits as you can see from the variety of articles sent to us.

A big thank you to all our contributors and to our Advertisers whose continued support enables us to get the magazine published.

We are always on the lookout for news and views so please get in touch if you would like to share anything with our local community because without you there would be no magazine.

I hope you enjoy the rest of the summer and look forward to receiving your articles for the autumn edition.

Best wishes

Jill Roberts

## Contents

Welcome	3
What's On	5
Speen School & Little Apples PreSchool	7
Speen School PTA	7
Lotte at Wembley	9
Edie Weighing In	9
Speen & North Dean Golf Day	11
Speen & North Dean Covid Response	12
Speen Helping Hospices	15
Lacey Green Parish Council	17
Speen Playing Fields	19
North Dean Village Hall Lunch	19
Queen's Platinum Jubilee	20
Speen Environmental Action Group	23
Speen Women's Institute	27
Recipe	29
Wildlife Watch	31
North Dean & Speen Defibrillators	33
Chilterns Clock Club	33
In Remembrance	35 & 37
Darvills Hill Farm	37
Who's Who	38

Front cover: Examples of the children of Speen School's artwork to celebrate the Queens Platinum Jubilee.

## Next Edition

Copy for the next edition is **due by 15th October** with a planned publication date of early November. Please send photos separately from text, together with captions and a consent form (downloaded from the SNDN website [www.speenbucks.org.uk](http://www.speenbucks.org.uk)) if any photos are of children. Please send to [editor.sndn@speenbucks.org.uk](mailto:editor.sndn@speenbucks.org.uk).

## With grateful thanks

To all our advertisers for their support of this magazine and to all the volunteers who deliver it to your door.

## Welcome Packs

The Good Neighbours scheme was set up many years ago and is now run by Pat Richardson in Speen. The service is to provide new Speen residents with a Welcome Pack of village information, so if you know of anyone new to the area please call Pat Richardson on 01494 488627.

## Village News

If you are not already signed up to The Village Messenger do email [Village@SpeenBucks.org](mailto:Village@SpeenBucks.org) to be put on the mailing list, with the word 'include' in the subject line - they will keep you up to date via email on a monthly basis with all the latest village news and important dates.



# WELCOME TO YOUR NEW LOCAL PUB



COME AND JOIN US AT *the* Gate  
PUB & DINING

DELICIOUS NEW MENU • KIDS PLAYGROUND • FUNCTION ROOM HIRE • DOG FRIENDLY  
• LIVE EVENTS • CURRY CLUB

# WHAT'S ON

## *in Speen & North Dean*

### JULY

4th July	WI - Summer Social Event	Speen Village Hall 7.45pm	Jenny Pearce 562333
9th July	Speen Fete	Speen Playing Fields	Clare Morris 488553
7th July	WI - The Caribbean	Speen Village Hall 7.45pm	Jenny Pearce 562333
25th -29th July	Lighthouse – Princes Risborough (holiday club)	Princes Risborough School 10-3:30	Lighthouse Risborough Website

### AUGUST

4th August	WI Summer Social Event	Village Hall at 7:45pm	Jenny Pearce 562333
13th August	North Dean Fete	North Dean Playing Fields	Dick Pooley 269615

### SEPTEMBER

10th September	Grainne Hunt (Folk Singer)	Speen Marquee profits to Ukraine Charity	Jeremy Symondson More details to follow
13th August	North Dean Fete	North Dean Playing Fields	Dick Pooley 269615

### OCTOBER

19th October	SHH Bridge Challenge & Afternoon Tea	North Dean Village Hall	Grainne 07778803260
October date tbc	North Dean Wine Tasting	North Dean Village Hall	Dick Pooley 269615

### NOVEMBER

November	Speen Fireworks Display	Speen Playing Fields More details to follow	
----------	-------------------------	--	--

### DECEMBER

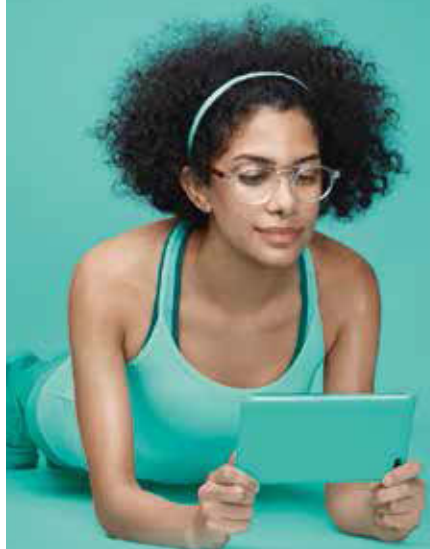
December date tbc	North Dean Xmas Carols	North Dean Village Hall	Dick Pooley 269615
-------------------	------------------------	-------------------------	--------------------

--	--	--	--

## List of Advertisers

Aironics, Alchemille Garden Design, Andy Ellis Tree Surgery, Ashridge Home Care, Aston Hearing, Beechdean Farmhouse Dairy Ice Cream, Briants of Risborough Ltd, Buckmoorend Farm Shop and Kitchen, CG Tree & Garden Services, Coles & Blackwell, Fraser Morgan School of Dancing, Hypnos Beds, JNP, John Bishop Garden Machinery, Leigh Lewis Optometrist, Lloyd's Wines, Lovell Fuels, Martin Holman's Pest Control and Services, MR Collins, Nick Higgins Forestry and Fencing, The Painted Kitchen Company, Paul Newman Ltd, Rowena's Therapies, Speen Pilates, The Gate Pub, The Harrow Pub, Tudor Travel, Village Environmental Services.

If you use the services of any of our advertisers please do mention that you saw their ad in The Speen & North Dean News



# EYEZEN™

## LENSES RANGE: DESIGNED FOR A CONNECTED LIFE.

### YOUR PATIENTS SPEND A LOT OF TIME LOOKING AT SCREENS.

Smartphones, tablets, computers and TV are now an indispensable part of their lives, to socialize, inform, learn, educate, work, play, relax and see the world.

**4**  
DIFFERENT  
DIGITAL DEVICES

used on average for work,  
education and leisure.\*

**2**  
OUT OF  
**3**

use a smartphone daily.\*

**64%**

of people spend **4 HOURS OR MORE**  
on a computer per day.\*

**- EVEN WHEN PEOPLE RELAX IN FRONT OF SCREENS, THEIR EYES NEVER STOP WORKING -**

\*Consumer quantitative study - 4000 individuals - US, Fr, Br, CH (Br & CH: online representative) - Independent Institute - 2014.

### LEIGH LEWIS OPTOMETRIST

247 MAIN RD, WALTERS ASH,  
HIGH WYCOMBE HP14 4TH

TELEPHONE: 01494 564 600

**Paul's Plumbing**  
**07786 175123**

## PLUMBING

### Plumbing & Problem solving

Friendly, Reliable & Local

Bathrooms • Kitchens • Taps • Leaks  
Tanks • Radiators • Valves • Pipework

Based in North Dean.

Local to Speen, Naphill,  
Walter's Ash, Lacey Green,  
Hampden, Hughenden

Paul Newman Ltd. **07786 175123** | 01494 565573

# SPEEN SCHOOL & LITTLE APPLES PRESCHOOL

Jacquie Coles, Headteacher



The children at Speen School and Little Apples Pre-School had a lovely time celebrating the Queen's Platinum Jubilee. They enjoyed making and decorating some crown shaped biscuits and were delighted to each receive a special Jubilee mug from the village.

Our regular reading helpers also supported us with a question and answer session about their royal memories over the years, coming suitably dressed in red, white and blue for the occasion, to match the children.

Little Apples pre-school meanwhile had fun with red, white and blue threads, practising their weaving and threading skills.



## SPEEN SCHOOL PTA

Fleur Ridley, PTA Co-Secretary

### *Summer term news from Speen School PTA*

It has been another busy few months for the PTA. In March we organised the popular Safari Supper event. This was the first Safari Supper in two years. It was a very successful evening and enjoyed by lots of school parents and villagers. Many thanks to all who hosted, attended, and helped to organise this great village event.



*School Garden*

In April, we had our first ever school disco. The children stayed for an extra hour after school where they enjoyed a treat, some dancing and lots of party games.

Now that the weather is nice and warm, our popular 'Frozen Fridays' are back. This is a lovely little event where the children purchase an ice-cream to enjoy after school on a sunny Friday.

One of our more recent events was a 'Toy Sale' which we ran after school. Again, we



*Frozen Friday*

would like to say a very big thank you for the donations received from villagers and school families. The children really enjoyed this event, and parents had the opportunity to chat over tea and cake in the sunshine. We managed to raise £150 profit from this event, which is brilliant for a small school.

A number of parents have been busy helping out with the school garden, repairing, digging and planting the vegetable patches. The children had a lovely time helping with the planting and seeing the transformation of the vegetable beds.

The end of term is busy and we have a number of smaller events coming up which include a uniform sale and welcome coffee morning for new parents. We also have several stalls at the village fete which we help to set up and run on the day. This will be a great way to round up a busy term for the PTA.



# THE HARROW

*Serving great food 7 days a week*



**YOUR LOCAL, FAMILY AND DOG FRIENDLY PUB  
SERVING DELICIOUS, FRESHLY PREPARED FOOD,  
LOCALLY SOURCED REAL ALES  
AND A GOOD SELECTION OF WINES**



**FOOD SERVED:  
MONDAY-SATURDAY : 12NOON-9PM  
SUNDAY : 12NOON-5PM**



**QUIZ NIGHT TUESDAY 8PM**

*There's always something going on at The Harrow Pub,  
so get yourself down here  
and enjoy the beer, the entertainment and the company.*

**01494 564105**

**WARRENDENE ROAD, HUGHENDEN VALLEY, HIGH WYCOMBE HP14 4LX**

**[WWW.HARROWHUGHENDEN.CO.UK](http://WWW.HARROWHUGHENDEN.CO.UK)**



# LOTTE AT WEMBLEY

Air Cadet Sgt. Lotte Cook

## *Displaying the Chelsea banner at the F.A. Women's Cup Final*



What a day I had with the Air Cadets on Sunday! Along with a detachment of the Bucks Army Cadet Force, Air Cadets from Wycombe, Aylesbury, Penn and the Chalfonts were selected to attend the Women's FA Cup Final at Wembley Stadium. Our purpose: displaying the team flags on pitch during the National Anthem.

With an early start to the morning, the lucky few began at Watford FC, practicing every detail from walking out on the right bit of grass to stretching the enormous banners out. Fully prepped, on to Wembley we went for the match.

Having never been to Wembley before, I was astounded by the size and the atmosphere both. I was holding the far-right side of the Chelsea banner, with the entire stadium stretching out in front of me. Even in the pouring rain, I could feel the heat of the pyrotechnics at my sides and the support of 49,000 fans at my back.

We were given excellent seats in the Manchester City end to watch the match; and what an exciting match it was. I couldn't help but wave the complementary flag in my seat, and at the end of extra time it was 3-2, giving Chelsea the win.

After a long day the train queues were longer, but we secured pizza and went to bed satisfied. 10/10 would recommend!

# EDIE WEIGHING IN

The end of Edie's year as Mayor of High Wycombe's Air Cadet

Air Cadet Edie Vernol



Edie being weighed at the annual event on 28th May 2022 to check whether the outgoing Mayor of High Wycombe has "over-indulged" on public money during his/her term of office



Edie receiving a certificate of appreciation from the Mayor of High Wycombe at the end of her year's attachment as the Mayor's Air Cadet

HOME REARED MEATS,  
LOCAL PRODUCE  
& HOME COOKED FOOD

BESPOKE GIFT HAMPERS



Free Home Delivery &  
Contactless Collections

Chequers Estate | HP17 0UT  
SHOP Tues - Fri 10 - 6 & Sat - Sun 10 - 4  
KITCHEN Fri - Sun 10 - 4  
[www.buckmoorendfarm.co.uk](http://www.buckmoorendfarm.co.uk)

LLOYD'S  
WINES

INDEPENDENT WINE SPECIALIST

POP IN OR SHOP ONLINE

[lloydswines.com](http://lloydswines.com)

RETAIL & WHOLESALE



FREE LOCAL DELIVERY & EVENTS

07547 645917

Upper Warren Farm | Hampden Road  
Prestwood | Great Missenden | Bucks | HP16 0JL

LOVELL FUELS  
OIL DISTRIBUTOR



Still Independent  
and Family-Run

YOU are at the heart of our business



01844 202777

[www.lovellfuels.com](http://www.lovellfuels.com)

RELIABLE SERVICE

COMPETITIVE PRICES!

Go online, email us at [sales@lovellfuels.com](mailto:sales@lovellfuels.com) or call us for a quote



# SPEEN & NORTH DEAN GOLF DAY

Dick Pooley

*April 2022*



On 28th April this year two golfing teams, one from each village, gathered at Badgemore Park Golf Club in Henley on Thames to once again strive to win the Keen Cup. Due to the Covid pandemic this particular trophy had not been played for, for two years and so all players were keen to show their prowess at addressing "the little white ball".

With the teams nearly equal in numbers at twenty for North Dean and twenty-one for Speen, the contest was, as always, very closely contested.

The course was in immaculate condition with some very interesting and testing holes and some very picturesque ones too. Our hosts were excellent in their hospitality and the all-round facilities were greatly admired.

The result was the narrowest of wins for North Dean:- North Dean 28.75 average stableford points and Speen 27.5 average stableford points.

## **And the individual winners were as follows:-**

**First** - Christine Davies (Speen) with 39 points.

**Second** - Tom Pooley (ND) with 38 points

**Third** - Paul Gerard (ND) with 34 points {on count back.}

**Nearest the Pin** was won by Vinay Patroe. (Speen)

**Longest Drive** was won by Duncan Dow (Speen).

Well done to all the winners.

It should be noted that there was only one Lady player, and for the forthcoming Autumn clash, both Joe Allan (Speen captain) and I would hope that we could entice more ladies to take part and enjoy the day.

# SPEEN & NORTH DEAN COVID RESPONSE

Jill Rogerson, with contributions from Clare Hobbs, Sandy Mitcheson, Graham Peart, Grainne Suter, Lesley Thorn-Davis and Ian Warr

## *Celebration of our community 2020 – 2022*

As we continue to head towards more normal times following the pandemic, this is an opportune moment to reflect on and be thankful for the care and support we have been so lucky to experience within our two villages over the past thirty months. The following are some of the initiatives which were put in place, with apologies for any that may have been omitted but which were equally appreciated.

### *Covid Support WhatsApp Group and Buddy System*

When COVID-19 first hit the headlines and the virus spread like wildfire around the world, a small village WhatsApp group was created to support villagers who might be in need of help. The group, run by Jem Symondson, Andy Thompson, Scott Thorn-Davis, Ian Warr and Craig Watson, aimed to provide a local response to people at risk - those who'd come down with COVID-19 and vulnerable people who needed to self-isolate. As the list of WhatsApp group members swelled, it became apparent just how many local people lived outside the usual hubbub of community activity; many were elderly, living alone and very frightened, and they wrote direct messages to us saying as much.

Around the same time, the team hatched the "buddy" scheme. An appeal for volunteers was sent out on the WhatsApp Covid support group, and we allocated homes to buddies. Help on offer included collecting food supplies, medicines and letters that needed posting. Once we'd figured out a safe and hygienic approach to make this all happen, there was a hive of activity with deliveries being made by about a dozen buddies.

A few weeks later, and once the supermarkets began sorting out more delivery slots and we all got a bit more used to COVID-19, the need for buddies started to dwindle. However, Jem had been keeping a close eye on poverty levels in the Wycombe area and found that the One Can Trust food bank was straining as hundreds of new local families requested help.

### *One Can Trust*

The trustees of One Can Trust, one of whom (Graham Peart) is a Speen resident, thank all of the many Speen and North Dean residents who show incredible generosity when donating food items to the food bank. Graham says that the volume of the food collections in our local communities

remains at a consistently high level.

The High Wycombe-based food bank has been supported over many years by our two villages, with collection boxes situated outside Upper North Dean Farm and Westwood, with kind permission of Peter and Judy Keen, and Jeremy and Christine Symondson, respectively. A number of Speen and North Dean residents are amongst the 200 regular volunteers, collecting food from supermarkets, packing the parcels, making phone calls to clients to offer additional support or delivering the parcels to doorsteps.

The need for the services of the One Can Trust food bank became critical during the pandemic during which carefully tailored parcels were delivered initially to around 180 households each week to. By the end of 2020, in December 2020 alone, over £45,000 worth of food was collected, sorted, carefully packed into emergency food parcels and delivered to the doorsteps of 914 people including many children, providing food including fresh produce and other essentials..

### *Clapping for Carers*

We all clapped, rang bells and made lots of noise every Thursday evening during the first lockdown – a young trombone player and a more mature kettle drummer were spotted on a regular basis in the groups of socially distanced individuals and families in front of their houses.

### *Speen NHS Bakers*



Clare Hobbs delivering tray bakes at Wycombe Hospital

A team of 20 bakers from the village provided tray-bakes during Lockdown 1 which were distributed by Clare Hobbs, a Cardiac Rehabilitation Specialist Nurse; and, during her absence on leave, by fellow Speen resident Jill Roberts, Senior Sister at the McIntyre Endoscopy Unit, both based at Wycombe Hospital. They speak about the tremendous pressure the hospital was under throughout the pandemic and particularly during the early uncertain times. One of the very few



positives at this bleak time, described by Clare as "grim beyond belief", was the sense of spirit and community which was directed towards the NHS from the outside community.

The arrival of the tray-bakes of various flavours were greatly appreciated and were delivered initially by Clare who had to obtain special permission to move around the hospital. She recalls one day delivering a coffee-flavoured tray bake to the Minor Injuries unit, chocolate brownies to the Cardiac Day Unit, chocolate fridge cake to the Path Lab, with another to the Sunrise Cancer and Haematology Unit.

A letter of thanks was received from Neil MacDonald, Chief Executive, Buckinghamshire Healthcare NHS Trust, saying that "receiving the cakes will have lifted the spirits of colleagues at the Hospital during this difficult time".

### *Village support for fund-raising in support of Speen Helping Hospices*

As the 1st Lockdown started, the SHH committee and volunteers dusted down their sewing machines and produced face masks, with fabric and elastic donated by villagers, with proceeds going to SHH: the initiative raised £4,400. Joanna Brownridge, a very well-known and local landscape artist, donated one of her paintings to SHH for us to raffle; the initiative was well supported by the village and raised £3,125. As restrictions lifted slightly, the Martin Hart Quartet played at a socially distanced event at Great Hampden Cricket Ground in June 2020, raising £1,200. The Christmas Market went on-line as we hit another lockdown, the on-line shop was an amazing success. We squeezed in two socially distanced carol singing evenings before the Covid rules tightened again, also the Sassy Santas fun run, pop up stalls and a Christmas Hamper raffle raising £6,448.69.

Community support for Speen Helping Hospices continued in 2021 as restrictions were still in place - villagers came out in force to get their raffle tickets for the Valentine' Dinner raffle and to buy Afternoon Tea Boxes in March. The figure raised for 2020 was £17,604.68 and £19,326.93 for 2021, totalling £36,930 for the two years being raised for the charity through support from both villages

### *Speen Spring Clean & Collect and Sales and Wants WhatsApp Group*

At the end of Lockdown 1, a Spring Clean & Collect was held on Bank Holiday Monday: 25th May. We had all been clearing out cupboards and lofts during the first lockdown and, in the absence of charity shops being open, Cat Cook suggested that we fill our verge or driveway with our pre-loved items to be recycled to others around the village. Donations were invited to be made to the One Can Trust and over £900 was raised for this very worthwhile charity. Another

benefit arising from the event was the setting up by Cat of the Speen Sales and Wants WhatsApp group, providing a conduit for the exchange of a whole range of household goods, toys, garden tools ... and even a car and house sale.

### *VE Day*

On 8th May, towards the end of the Lockdown 1, some socially distanced tea parties were held with separated tables made up of family groups celebrating with tea, cakes and in many cases drinking bubbles to celebrate.

A surprise 75th Anniversary VE Day tea complete with homemade scones and jam was delivered by members of the Speen Church community to all villagers who would have been around on VE Day in 1945. For many, it brought back memories of growing up during the war years, the excitement of the VE Day celebrations and finally being able to buy sweets again!

### *The Chapel's Deliveroo Service*



*Megan Chinn  
taking delivery of her lunch*

Though lockdowns meant it was no longer possible to keep the Church Café open, home cooked meals were offered to those who were living alone or otherwise vulnerable. This was achieved by a small but fantastic team who willingly took on the added restrictions of COVID rules to cook, pack and deliver meals every Thursday. The menu included a choice of soups, main meal, and delicious cakes and over 300 meals were delivered between April and mid-July 2020. To make this accessible to all, no charge was made but those who wished could make donations to cover the cost of ingredients and benefit the two local and two international charities supported by Speen Church (One Can, Wycombe Homeless Connection, LIFT Vulnerable Mothers and Children in Ethiopia, Agape Alive in India).

***But that was all then. Thankfully, the world has moved on a long way.***

***For many, the lockdowns were actually a happy, peaceful time but for many others these were difficult times. What's clear, and what lingers as a vivid memory, is the response from everyone and the strong, vibrant, caring communities that are Speen and North Dean.***



## FRASER-MORGAN SCHOOL OF DANCING

\*\*\*\*\* Naphill Village Hall \*\*\*\*\*

### RAD BALLET for ages 3+



For more information  
please contact  
01494 816539 or  
07974 121081



## ROWENA's

(MCThA) (AoR)  
NHS Register of Approved Reflexologists  
Karuna & Reiki Master

Aromatherapy  
Caci non-surgical face lifting treatments  
Reflexology  
Aqua detox  
Indian head massage  
Acupressure massage  
Energy healing

Treatments carried out in  
home based salon in Bryants Bottom

Call Rowena for more information  
or a free consultation  
Tel: 01494 488430  
Mob: 07855 848261  
rowena.j.templeman@gmail.com

## Coles & Blackwell

### Car Service & Repairs

Book online at:  
[www.colesandblackwell.co.uk](http://www.colesandblackwell.co.uk)

## Quality car servicing and repairs much closer than you think!

Where are we? You will find us 300 metres down the small lane opposite the top of Bradenham Wood Lane in Walters Ash, High Wycombe HP14 4UX

*Established in 1959*



### Servicing

Did you know you can get your car serviced by us without invalidating your manufacturers warranty? Legislation passed a few years ago means that you can now choose any garage of your choice to service your vehicle.

### Courtesy cars

We have a fleet of new loan cars at your disposal whilst we service your own car or repair bodywork damage. Best of all - they are FREE OF CHARGE!  
All part of the service you come to expect from Coles & Blackwell

air conditioning	_____
mot testing	_____
vehicle servicing and repairs	_____
crash repairs	_____
tyres, clutches & brakes	_____
computerised diagnostics	_____
batteries & exhausts	_____

Opening Hours:  
Monday to Friday 7.30am to 5.30pm

# 01494 563102



# SPEENHELPING HOSPICES

Supporting Helen House for Children, South Bucks Hospice at Home, Florence Nightingale and Rennie Groves Hospice Care

Gráinne Suter



Two fundraising events to report back on this Spring. After a three-year gap, we were back at The Horse Trust on the 11th of May for the annual Spring Lunch. A delicious three course meal was served to 60 guests. David Haggard, Corporate Community Fundraising Manager gave a presentation on the work of South Bucks Hospice at Butterfly House. The hospice is there to support people through diagnosis, treatment, recovery or coping with loss. Many thanks to the Horse Trust, they provided a beautiful venue and all facilities free of charge, their generosity enabled us to save on venue costs.

The weather prevented Jane Marchant from Alchemille Garden Design from selling plants at the event, but on the following Saturday Jane and her daughter Lulu held a plant sale in Speen with profits going to SHH.



We were much luckier with the weather on the 12th of June for the third Jazz in The Park at Great Hampden Cricket Ground featuring the wonderful Martin Hart Quartet. A perfect way to spend a lazy sunny afternoon, wine, huge picnics and great music.



Thank you also to Richard Hearn who played the piano whilst Martin and the band took a break.

This is a review from a very satisfied customer

"Just to say thank you so much for a wonderful afternoon of jazz – we all enjoyed the music and the children had a lovely time dancing and playing. It was a very happy afternoon and I hope you raised a good amount of money for SHH. Thanks again Emily". *Emily and family are pictured below.*



Your support really matters. The hospices are primarily supported by charitable donations, so the success of every event that we run is dependent on your generosity. These are financially challenging times, and we know there are many calls on your generosity but please continue to support Speen Helping Hospices. With your support we can help to improve the nature and quality of care provided at end of life, not only for the individuals approaching end of life but the needs of their families also. Your contributions enable families spend their last days together with care, compassion and dignity.



*John and Gloria Holmes enjoying the event.*

CONTINUED ON P17

# Martin Holman's Pest Control & Services



Qualified & Fully Insured



**NPTA**

tomorrow's association  
for today's technician



(M) 07510 290321 (T) 01296 622972

ratman01@talktalk.net



@MHPestControl

## VILLAGE ENVIRONMENTAL SERVICES DOMESTIC DRAIN SERVICES

Proprietor: Dennis Cook  
Est. 1979

# BLOCKED DRAINS?

FAMILY RUN BUSINESS SINCE 1979

BLOCKED DRAINS CLEARED

REASONABLE RATES

CCTV DRAIN SURVEYS

NO EXTRA CHARGE FOR EVENING, WEEKEND OR BANK HOLIDAY CALLOUTS

FULL PUBLIC LIABILITY INSURANCE

## CALL US DAY OR NIGHT

**24/7  
CALLOUT  
SERVICE**



**07850 635 844** 01296 624 221 (MESSAGES)





## Fundraising Challenge

### Help raise money in 2023

Speen Helping Hospices are looking for people to raise money for SHH by taking part in a local fun run/half marathon/cycle race or other event.

If you are planning or considering taking part in a sporting event, would you help others by fundraising for Speen Helping Hospices as you run/cycle/swim?

We will support your fundraising, promoting your participation locally and via social media and our website to attract sponsorship.

**If you are up for this challenge, now is the time to plan it, visit our website for more information at <http://www.shh-shop.org/FundraisingChallenges.htm>**

## Dates for your Diary

### Bridge Challenge and Afternoon Tea

19th October in North Dean Village Hall.

### Christmas Market

19th November in the Chapel Hall.

For further information about the events check out our website [www.shh-shop.org](http://www.shh-shop.org)

**Don't forget** if you would like to support or sponsor a fundraising event, or help us in some way, please contact me

[grainnesuter@btconnect.com](mailto:grainnesuter@btconnect.com) or 07778803260.



## LACEY GREEN PARISH COUNCIL

### Queen's Platinum Jubilee

Roger Craft and Philip Suter - Councillors

### Mugs

As requested by Amanda Dobbs and Debbie Tilt of Speen Community Jubilee Celebration, the Parish Council paid for 120 Jubilee mugs that were distributed to the children at Speen School.



To mark the occasion of the Queen's Platinum Jubilee, the Parish Council agreed on one memorial for the three villages with new gates and driveway at the Garden of Rest, an area that is solely for residents of the three communities to bury their loved ones in the Parish in which they had resided.

### New Gates at The Garden of Rest



The Garden of Rest was acquired by the Parish Council from the Methodist Church many years ago and was originally known as the Lacey Green Methodist Cemetery. It is now known as The Garden of Rest and is a non-denominational facility for use of residents from Speen, Loosley Row and Lacey Green. The Parish Council maintains the area and are undertaking work to improve the environment. As part of the improvement plan the old wooden gates were earmarked for replacement as well as resurfacing the driveway.

Unlike in neighbouring Hughenden Parish Council, residents of Walter Ash, North Dean or Bryants Bottom have to travel a longish distance to Four Ashes Road at Cryers Hill to visit their Garden of Rest, for residents of Speen and Loosley Row it is a short distance to Lacey Green.

More information can be found at Speen Village website

### MVAS – Motor Vehicle Activated Signs

You may have noticed that the MVAS monitoring units, purchased and owned by LGPC, that display the speed of vehicles and collect information about the number of vehicle movements over a period, as well as registering the number exceeding the speed limits, have been missing over the past few months. Unfortunately, they have been broken into and the lithium batteries removed which is not unique to Speen and surrounding villages, but also in other parts of Buckinghamshire. We are in discussion with the manufactures with regard to their repair and security measures to safeguard the lithium batteries. Hopefully, you will see the return of the upgraded MVAS units in the next few weeks.

GET YOUR HOME  
SUMMER READY  
WITH  
**AIRONIC**

**AIR CONDITIONING**  
INSTALLATION - MAINTENANCE - REPAIR

Based in Bucks, we are your  
local HVAC specialists. Contact  
us to discuss your heating and  
cooling needs.

**07793 270883**  
**01844 873656**

*scan me*



**@AIRONICLTD**

**WWW.AIRONIC.CO.UK**

**INFO@AIRONIC.CO.UK**



# SPEENPLAYING FIELDS

Matt Davies

## *Speen Funday 2022 - Closing Message From The Royal Rumble*

Dear Villagers

The closing bell has rung on the Royal Rumble and so we bid farewell to Speen Funday 2022.

The cuts have healed, the sunburn eased and even the unexplained rashes (wholly unrelated to the kiddie kurling lubricant) have subsided. The ribbons are being stowed for another year and, as we do, the thanks and plaudits.

Firstly, huge congratulations to the winners, the Green Team, under the inspirational leadership of Dan Danford and his impeccable joker playing tactics.

Secondly, big respect to Maia Appleby who emerged triumphant in the Kiddie Kurling Kup. A close run thing, with notably excellent performances from both Toby Cook and Harry Davies. After a lengthy debate, the impartial panel of judges opted for Maia for her poise, impressive distances and overall regal awesomeness. Well done Maia!

Next up, thanks to the team captains who's leadership, coolness under pressure and creative interpretations of the rule book (what rule book?) really ignited the contest: White Will, Red Rob, Blue Nic, Yellow Jo and of course Dan, the Green Machine.

Onwards, to the team of muscle, brain and improvisation who made the day work.

- **Geoff 'The Ref' Smith** - his swan song after years of razor sharp officiating
- **Jim & Clare Morris** - barbecuing aficionados with amazing staying power
- **Chris Walsh** - arrow straight white lines and pinpoint hosing

- **Pete Symonds** - inspiration for games, general coordination and guidance
- **Greg Cook** - logistical supremo, catapult and kurling lead
- **Ian Waterman** - silver tongued cavalier with the voice of melted chocolate
- **Cristina Delgado** - unwavering stewardship of the sumup machines

Returning to the ribbons; they are gently being put to bed, but if you happen to spot any outliers please do feel free to untie, wipe away the guano and return to me or SPF for reuse.

Lastly to those who may have heard whispers of liberal rule interpretation or even, dare I say it, cheating! No! I can assure you all that I have been assured and given assurances that all rules were followed at all times, assuredly. Anyway, it's time to move on and get on with the job.

In parting, a message to all you aspirational game designers, rule sticklers and just general Funday enthusiasts. Funday is rumoured to have just celebrated its 20th birthday! The planning (what planning?) and execution (winging it!) are not just whispered on the wind to a select few, any idiot can do it (as I have consistently demonstrated), so if you want to be involved for 2023, make it known!

Thanks to all who helped and participated. Hopefully, if it was your first, it won't be your last.

Yours royally,

Matt Davies

## NORTH DEAN VILLAGE HALL LUNCH

Dick Pooley

On Sunday 20th March this year, around fifty Villagers gathered in the North Dean Village Hall to enjoy a lovely lunch organised by Melinda Pooley and her willing band of chefs, namely Judith Broadley and Kim Hemson. Carvers and servers were Kerry White, Neville Hemson and Steve Rogers who were kept very busy.

The lunch consisted of roast pork with all the trimmings and was followed by a delightful fruit pudding supplied and personally made by Judy Keen.

Once again, a very successful village event!

# QUEEN'S PLATINUM JUBILEE

Amanda Dobbs

## Queens Jubilee Tea Party

Only by a few months but this year Queen Elizabeth II became the 2nd longest reigning monarch in the history of the world, and the longest reigning monarch the UK has ever or will ever see in our lifetimes, so it was never going to be an option for the village not to commemorate this truly momentous occasion, and we did it in style.

The scene was set, the marquee was decorated in red white and blue and awash with all things royal, the tables were laid ready

for the royal picnic's, the gazebo's adorned with pictures drawn by the local children, the queen was in residence for photo's, the coronation was playing in the background and the tea tables were brimming with cakes, now all we needed was the music and the village to arrive, and at 2pm they did in their droves, the marquee was heaving, it was heart-warming to see so many people turn out to enjoy the afternoon.

The tables were brimming with banquets fit for a Queen, the children playing and having their photos taken, neighbours, friends and families all enjoying their time together, wonderful music by the quartet and the orchestra who played all afternoon, thank you Kate you did us proud,



Rory Gater and Laurence Maynard having an audience with the Queen

and at 4pm thanks to Johnny T and his band of merry men the National Anthem was played loud and proud with everyone waving their flags to the music, we even had a visit from our local MP who had heard that Speenies like a party, so safe to say the afternoon was a resounding success and all thanks to a small group of lovely ladies whose hard work and commitment not only made the day possible but who also funded it for the village to enjoy, so thank you

Debbie Tilt, Lesley Thorn-Davis, Ami Brownridge and Jo Binder, without you it would not have happened.

The winner of the "most regal picnic" was Maureen Laing and her table, hopefully they enjoyed their champagne, the tea and cake raised £270 in 2 hours for the DEC Ukraine appeal thank you Debbie & Jo and a huge thank you to the parish council for providing us with the grant for the Jubilee mugs given to all the primary school children of Speen and Speen COE school, and to the generosity of Greg and his team for providing us with the marquee

and the Playing fields committee for allowing us to use the field all of which show that Speen really is a community based village.







Music at the Speen event was provided by the Laughton's and friends

# QUEEN'S PLATINUM JUBILEE

Dick Pooley

## *Celebration in North Dean - Picnic in the Field*



Sunday 5th June 2022 began somewhat overcast and we were all concerned that we might not have enough gazebos if the weather turned really sour for the afternoon's activities!

However, as nearly sixty village folk with picnics, began to gather around 1.00 pm on the Village playing field, it seemed as though we might be

blessed and the forecast rain never materialised.

Although a little chillier than most would have liked, everyone got stuck into "Coronation Chicken" and Strawberry trifles! We were treated to some lovely background sounds courtesy of Bob Broadley who kindly arranged the music for the day through his trusty iPad of a thousand tunes and the help of a loud speaker hired from a local shop.

The youngsters then began playing with Giant Dominoes, Giant Jenga and most popular of all a game of rounders where both young and old participated.

Plenty of fizz and other libations were consumed and there were several toasts to Her Majesty!

As the afternoon wore on the weather closed in and around 6.00 pm it was time to call it a day.

Yet another good time enjoyed by the residents, friends and families of North Dean.

**Nick Higgins**  
Forestry & Fencing  
Contractor

m. 07768 383418  
t. 01494 488835

45 Great Hampden    Seasoned logs  
Bucks                    available  
HP16 9RJ





Handmade in  
**Princes  
Risborough**  
with a **10 year**  
guarantee

# Inspired by nature

**Hypnos, a local award-winning bed manufacturer, has been handcrafting bespoke, made-to-measure mattresses and beds in Buckinghamshire for over 100 years.**

Every bed produced is created from the finest, natural and sustainable materials and is 100% recyclable at the end of its life. These quality beds come with a 10 year guarantee and a royal seal of approval from Her Majesty The Queen.

Hypnos' responsible approach is emphasised by being the world's first carbon neutral bed maker; and working with Red Tractor's assured farms and farmers to source 100% traceable British Wool for its Origins Collections.



# HYPNOS®

THE MOST COMFORTABLE BEDS IN THE WORLD

**Visit our Showroom – OPEN all day Monday to Saturday**  
Longwick Road | Princes Risborough | Buckinghamshire HP27 9RS  
T: 01844 348200 | [hypnosbeds.com](https://hypnosbeds.com)



## *To Mow or not to Mow?*

We made it – No Mow May. No mowing until well into June. With intermittent sun and rain my lawn has been transformed into a shaggy wilderness of long grass and grasses, wildflowers and weeds. I can only stop to admire the steady growth of unexpected flowers and plants, Kentucky bluegrass, common velvet grass, red clover, white clover, daisy, buttercup, poppy and dandelion.

So many wildlife experts are now telling us to stop mowing our lawns and verges, stop cutting back bushes at this time of year to give insects and birds a chance to thrive. According to Chris Packham insects are attracted to the smell and colour of different flowers but also their thermal signatures. The centre of a flower can be up to 11 degrees centigrade warmer than its outer petals which attract the insect in to save its own energy as it works.

One difficult day the sun came out for a few moments and I sat in the middle of this wild lawn. I watched a bee go from buttercup to buttercup extracting nectar for several minutes until it flew off to another patch. That close observation of nature in action calmed my nerves and helped me to connect with a wider sense of nature and well-being. We have decided to mow much less and keep the grass longer.

Walking around the village I have admired some beautiful verges and lawns left to grow and thrive as the message about letting things be wilder is sinking in. It is hard at first to accept messiness when gardening in the past was all about 'controlling nature'. However, we are now aware that we are just ruining and destroying it with over working, and relentless use of pesticides



and other chemicals. When you consider the acreage in Britain that is private gardens those of us fortunate to have one can do so much to help nature by employing simple ideas such as allowing a small passageway between gardens as wild life corridors, keeping an area wild, avoiding use of pesticides etc and perhaps creating a wild life pond.

Ridgley's Field has now got some lovely wildflowers on it. The yellow rattle which was deliberately sown has suppressed the growth of the grass in a specific area.

The little yellow flowers can be seen lower down amidst the wild plants and flowers that are blooming.

I have identified Lesser knapweed, Sorrel, Autumn hawkbit, Rough hawkbit, Grass-like starwort, Artic rattlebox, Oxeye daisy, Buttercups and one beautiful Orchid.

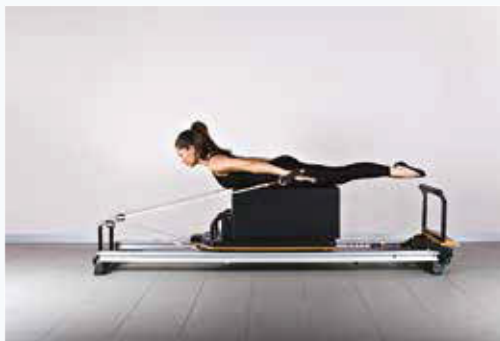
A path around and through the wildflower area has been mown so that we can all walk through this little bit of heaven.

How can we all make an even more positive contribution to the biodiversity in our beautiful village and surrounding area?  
To find out more about wildflowers and plants visit [www.plantlife.org](http://www.plantlife.org)

*PLEASE SEE THE  
UPDATE FROM THE  
RECENT SEAG SURVEY  
ON PAGE 25*

# Speen Pilates

STRETCH • STENGTHEN • CONTROL



## BOUTIQUE PILATES TRANSFORM YOUR FITNESS

Pilates can address structural imbalances, pain and difficulty with movement. It aims to enhance your posture, strength and flexibility, body tone, stamina and general fitness whilst releasing unnecessary tension.

### ONE TO ONES ON STUDIO EQUIPMENT

One to one tuition offers accelerated learning and improvement, the Reformer uses spring loaded weights to improve your posture, strength and stamina leading to a toned body.

### SMALL GROUP MAT CLASSES

Monday and Tuesday at 9.30am and 6.30pm  
Thursday and Friday at 9.30am

I also offer bespoke classes for groups of up to 6 friends!

More details on the website  
Booking essential

★ ★ ★

The Studio at Midmede, Chapel Hill, Speen  
Amanda 07733 307475  
amandapilates@btinternet.com  
www.speenpilates.co.uk

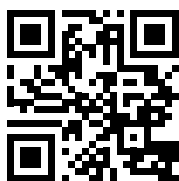




## *SEAG Survey Update*

*By SEAG Committee*

The combined results from the 2021 survey are available online, following our synopsis in the previous edition of SNDN. This report shows the aggregate results to preserve individual confidentiality. You can download the report from the following link <https://bit.ly/3hMceKN> or by scanning the QR code.



Following feedback from the survey, SEAG has begun to compile an Energy Efficiency knowledgebase on our section of the village website. This includes information on energy efficiency projects, technologies and recognised installers known to the village, as well as a directory of villagers who have volunteered to share, advise or demonstrate. If you have any feedback or would like to contribute, please email [seag@btinternet.com](mailto:seag@btinternet.com).



*by Kate Slade*

Currently, 14% of cut flowers are grown in the UK. (DEFRA)

The remaining 96% come from the Netherlands, South America and Africa.

Concern about the carbon footprint of the cut flower industry, and a passion for sharing the joy of homegrown flowers with my community, set me on a path to becoming a small artisan flower farmer.

Even before the Pandemic, there was a growing interest in cut flowers. Just as concern for the environment created local sustainable produce, consumers began paying attention to the provenance and sustainability of the flowers they were bringing into their homes. Added to this

was an interest in new flower varieties and a more homegrown approach.

March 2020 was the start of us all being confined to our homes and gardens. I began devoting all my free time to reading flower books and taking online courses.

With only essential shopping allowed and problems in the supply chain, flowers were in short supply. Yet people needed cheering up more than ever.

For me, flower farming seemed like a perfect fit, an activity from my home which could be incorporated into my life as a primary carer. So I took a leap of faith and created four times the number of raised beds in my garden.

# CG Tree & Garden Services

Tree surgery & felling

Fencing

Hedge cutting, topping & turfing

Woodchips & firewood for sale



*Free estimates • qualified staff • fully insured*

Please call

**07798 896380**



Since then I haven't looked back. Inevitably the weather and wildlife have brought their challenges, but we have to learn to live alongside nature. Watching the flower beds come alive with the sound of buzzing bees is a joy.

I recently joined FLOWERS FROM THE FARM a friendly and supportive organisation, which promotes British seasonal flowers.

I have discovered quite a range of Flower Farmers in the UK, some like me are producing flowers from their gardens some have a few acres. Growing

flowers on an artisan scale means choosing flowers suited to the local soil type and climate conditions.

Many Flower Farmers are peat-free using sustainable methods and choose to use paper wrapping with no single-use plastic.

Flower farming has been my salvation for the past couple of years and I've enjoyed forming good relationships with the flower farming community.

I urge you to give your local Flower Farmer your business as nothing compares to the beauty and heavenly scent of fresh, locally grown flowers. Their vase life is fab too!

## SPEENWI

*Jean Morris*

Having finally managed to celebrate our 62nd Birthday in April, we had to cancel our next meeting as there were so many Covid cases in Speen, our members included. However, we have enjoyed our summer meetings as well as a lunchtime outing to a local eatery. Some of our members will be learning the art of Archery this summer thanks to a course arranged with the Whiteleaf Bowmen at their club in Walters Ash. Our August meeting will be our Summer Social Event – hopefully outdoors if the weather permits

Later in the year we are hoping to hold a village wide meeting to find out about medi-bags and also how to avoid all the scams and pitfalls of our modern age. All our meetings are on the village messenger so watch out for the date for this important event.



*Worry Bears for young patients*

Local hospitals have been asking for worry bears for some of their younger patients. Member Lesley Batting responded quickly in sourcing Teddy Bear patterns and making some beautiful bears to inspire others to get involved. When completed they will have small pockets on the front for children to keep

notes or other important things to help reduce their anxiety.

As well as our monthly meetings and social events, Speen members have been out and about with other activities. Three intrepid volunteers took on other local WIs at the County Quiz. They finished a commendable 7th out of 20 teams but have no intention of entering for Eggheads! but an entertaining evening proved to be just the tonic after all the lost events of the past.

At the Federation meeting in Aylesbury three of our members joined others from all over Buckinghamshire to listen to Floella Benjamin and Julie Siddiqui. Both are well known for their broadcasting and campaigning for justice and tolerance. Buckinghamshire members now understand more about spotting heart attacks – particularly among women thanks to a resolution put forward by Fairford Leas WI. As this was passed with a large majority, campaigning will start within the County.

At a National level, after passing a resolution at the Annual Meeting in Liverpool, WI members now have a mandate to campaign for better diagnosis and care for those who have an autistic spectrum disorder (ASD) or attention deficit hyperactivity disorder (ADHD). Both conditions are often difficult to spot, especially in girls who seem to develop strategies to hide them.

WIs at both County and National level have good contact with those who are making decisions on topics such as these and we can hopefully help to improve the outcomes for many people as we have with previous campaigns.

*speenwi@gmail.com*

# A. ELLIS

## *Tree Surgery*

Fully Qualified and Insured Tree Surgeons



We undertake all aspects of  
hedge trimming and  
tree surgery

For a free, no obligation  
quote please contact us

**T: 01494 817234    M: 07709 491589**

**E: [info@aellistrees.com](mailto:info@aellistrees.com)**

**[www.aellistrees.com](http://www.aellistrees.com)**

For fencing enquiries call Mike on:

**T: 01494 868466**



# RECIPE

Mandy How

## Easy Lentil Moussaka

Delicious moussaka with layers of roasted aubergine, hearty tomato lentil sauce, and roasted garlic cashew bechamel.

Serves 4-6 • Dish size: Approx 20cm x 20cm

### INGREDIENTS

#### ROASTED GARLIC (for bechamel)

- 3 cloves garlic
- 1 tsp olive oil

#### AUBERGINE

- 2 medium aubergines
- 2 tbsp olive oil

#### BECHAMEL SAUCE

- 1 cup raw cashews
- 2 tbsp olive oil
- 1 tbsp nutritional yeast, plus more to taste
- 1/4 tsp sea salt, plus more to taste
- 3/4 cup water
- 1/8 tsp nutmeg (optional)

#### FILLING

- 1 tbsp oil
- 1 cup chopped onion
- 3 cloves garlic, minced
- 1 tin green or brown lentils, drained and rinsed
- 1 tin crushed tomatoes
- 1/4 tsp each salt + pepper, plus more to taste
- 1 tsp dried oregano
- 1/8 tsp nutmeg (optional)

### INSTRUCTIONS

1. Boil the cashews in water for 10 minutes until soft.
2. ROASTED GARLIC: Heat oven to 200 C. Slice off the very top of the garlic cloves, drizzle with oil and wrap in foil. Roast for 20 minutes.
3. AUBERGINE: Slice aubergine vertically, 0.5cm thick.
4. Transfer to 2 large baking sheets lined with baking paper and brush both sides with olive oil. Then bake at 200 C for 15-20 minutes or until slightly golden brown.
5. BECHAMEL: Drain the boiled cashews and add to a blender along with roasted garlic (cool slightly then squeeze up from the bottom to the top to remove the garlic), olive oil, nutritional yeast, salt, water, and nutmeg (optional). Blend on high until creamy and smooth.
6. Taste and adjust seasonings as needed, adding more salt to taste or nutritional yeast for cheesiness. Set aside.
7. LENTIL FILLING: Heat a large frying pan over medium heat. Once hot, add oil and onions and sauté for about 5 minutes until golden brown and slightly caramelised. Stir occasionally.
8. Add garlic and sauté for 3-4 minutes more, stirring occasionally.
9. Add lentils and crushed tomatoes. Season with salt and pepper, oregano, and nutmeg (optional). Simmer for 15 minutes, uncovered. Taste and adjust seasonings as needed.
10. ASSEMBLY: To your dish add 1/3 of the aubergine slices, top with 1/2 of the lentil mixture and spread. Top with another 1/3 of the aubergine and add the remaining lentil mixture. Top with the remaining 1/3 of the aubergine. Pour over the bechamel and smooth into an even layer.
11. Bake at 200 C for 25-30 minutes.

Recipe adapted from: Minimalist Baker



# Award winning Design

Extension • Conversion • New Build

SQU4RE



Jeremy Symondson  
Foursquare Land Limited  
Old Smithy, Great Hampden,  
Buckinghamshire HP16 9RF  
jem@4squareland.co.uk  
tel: 01494 488877  
mob: 07789 201616



## TUDOR TRAVEL

*Taking you there in style*

22 – 33 seat Midi coaches for  
Group travel, Corporate events,  
Days out, Local and long distance.  
Fully licenced and insured and COVID compliant.  
Private & Business accounts welcome.

**MD**  
**COURIER  
SERVICES**

Offering a fast professional  
and reliable service at an affordable  
price, whether it's around the corner  
or across the country.

*We have you covered.*

**info@tudortravel.co.uk**  
**01494 488887 / 07771 881245**

## THE PAINTED KITCHEN COMPANY



**PK**  
PAINTED KITCHENS.ORG

A: 5-7 DUKE STREET, PRINCES RISBOROUGH, BUCKS HP27 0AT  
M: 07768 975 323 • T: 01844 346444 • W: PAINTED KITCHENS.ORG



## Summer 2022

The tail end of the cold period saw an increasing number of winter migrants in village gardens. Numerous gardens with bird feeders (filled with sunflower hearts) attracted Siskins and Bramblings in good numbers. In our front garden 20 Siskins and 10 Bramblings were present on 16th March. Also notable was the absence of any Redpolls albeit I believe Ashley Cooper recorded a few in Cherrytree Close. In Great Hampden flocks of 100 Siskins and 80 Bramblings were recorded at around this time.

Early Spring saw Jackdaws investigating chimneys in the village as potential nest sites. Sometimes these birds can end up inside peoples houses and arriving coated in soot they can make a bit of a mess. Keith Fisher had such a visitor in March and the Binders also had problems. Cowling is the best protection but despite having one on our own house the Jackdaws nevertheless tried to build a nest on top but high winds dislodged this.

The early summer weeks can bring records of young birds that appear abandoned or in difficulty. Dan Dunford found a newly fledged tawny owl close to a public footpath in Monkton Wood. Generally, parent birds will know where their young are and will come to feed them when it is quiet. It may be prudent to move birds off the ground but care is needed because some parents can be very protective and may attack. Tawny owls have long talons and have been known to blind people in the past whilst seeking to defend their nests. In my own garden the female Mallard that has raised six ducklings from 13 that were hatched will attack me if she thinks I am a threat to the young. Similarly, the pair of moorhens that have raised five young at their second attempt will launch themselves at the Mallard if their tiny young are attacked by the ducks. Many other local Mallard nests



Andrew Stubbins



have been raided probably by foxes. I am unclear what took the 7 ducklings from our own garden but I suspect it might have been a heron making early morning raids.

I have previously described the excellent work being done by the Chiltern Conservation Board in conjunction with local farmers. One local farm which has been highly praised as a "hidden gem" is Manor Farm, Bradenham, run by Andrew Stubbins. The farm is known for its "fantastic hedges" and is said to be incredibly biodiverse. Seed rich margins have been created around the fields and his farm is now recognised as a stronghold for breeding corn buntings and other farmland birds as well as a site for Chiltern Gentian and

Venus-looking-glass. 40 Corn buntings, which are quite uncommon, were recorded in Saunderton over the late winter period close to this farm, probably benefitting from supplementary feeding sites.

Interesting bird records from the wider area include the reappearance of an immature White-tailed Sea Eagle again over Bledlow on 26th April said to be from the Isle of Wight re-introduction scheme. 19 Ravens were also reported in Bledlow on 1st May feeding on a sheep carcass. In High Wycombe town centre the Peregrine Falcons that have been about for a while have fledged four young; a first successful breeding record the town. A reported Blue Winged Teal at Marlow Low Grounds attracted many birdwatchers keen to see the first record for the county. However, some weeks later experts determined that it was a hybrid Cinnamon Teal and probably an escape rather than an interesting visitor from the USA.



Jackdaws

**Please let me know of any  
interesting sightings  
Tel 488016  
or [psymonds590@gmail.com](mailto:psymonds590@gmail.com)**

## Home Care Company Celebrates Success!

There is a lot to celebrate for locally owned Home Care provider Ashridge Home Care.



A belated 5<sup>th</sup> birthday afternoon tea was not the only reason for a get together, but the award-winning home care company also celebrated their move and expansion into brand new offices at Lacemaker Court Amersham. The team were able to meet and welcome their new Managing Director Mitch Miller. These important events were marked with a special afternoon tea to which clients and carers were invited and local dignitaries, the Queens Lord Lieutenant of Buckinghamshire Countess Elizabeth Howe and Amersham Mayor Councillor Mark Roberts, kindly attended and enjoyed speaking with guests. Founder and local Speen resident Trudi Scrivener hosted the event and welcomed her team of live-in carers with their clients and socialised with visiting carers who enjoyed a well-earned break.

It was a great opportunity for new Managing Director Mitch Miller to meet some of the company's clients as well as meet some of the carers. The occasion was marked with some lovely words by Lady Howe who recognised the important work carers have been undertaking in very challenging times and it was a fabulous opportunity to showcase the new office premises which will be open to carers to utilise the modern training facilities and relax in the comfortable kitchen and break out area. Looking after its' carers and giving them a space for a well-earned break is very important to Trudi and her management team. They've even won awards for their employee satisfaction scores!

The Ashridge Home Care team go above and beyond to ensure their clients are well cared for and happy. Their caring goes beyond arranging appointments and support with personal washing and medication administration.

The live-in and visiting carers are passionate about helping families live life to the full. Just like in this story about Hani, a live-in carer to a couple in the area. Hani has been with an elderly couple now for 10 months and knows they enjoy gardening and are active members of their local church community. During the spring she helped them arrange two gardening fundraisers for the local church. One small event took place in the client's garden so she could take part, which raised £110. And then a larger gathering at the church, on a sunny Saturday in May with tea and coffee and plenty of cake

Together the two events raised more than £1000. All the plants had been grown in the client's garden which the live in carer helps the couple tend to.



Live in care can provide all the care and support people need to stay at home, even those with the most complex health needs and those who are extremely frail and vulnerable can be supported to stay at home. Often the default option is to consider nursing home care and this doesn't have to be the case. A professionally trained care manager can assess the needs of clients and make sure that the right level of care is in place to enable them to remain at home.

Ashridge Home Care carefully matches carers with clients so that they share mutual interests and are trained to support their daily needs. As well as caring for complex care needs a live-in carer offers so much more than medical support and helping with personal care. They ensure clients live their best life in the home they love pursuing their interests. Home care gives you the reassurance that there is always someone there to help.

If you'd like to discuss your care requirements, call Ashridge Home Care and speak to a friendly Care Manager Tel 01494 917 344.





# NORTH DEAN & SPEEN DEFIBRILLATORS

Geoff Clark, South Central Ambulance Service First Responder

## The Rural Community Defibrillator Team



It has been five years and seven years respectively since the Public Access Defibrillators were installed in North Dean and Speen. You will probably be aware that they are there but have not always thought how you may have to use them.

We regard them in a similar way that you think of life belts on the sea front, happy to see them there but never seen them used.

Heart failure can strike anybody at any time so it is important that any help you can get is there and you are able to access it. Most of our cabinets are fitted with a coded lock to give security, it is as simple code as possible but in the event of an emergency remembering instructions can be a problem. When it comes to any emergency it is important to stay calm.



*The North Dean defibrillator is located at North Dean Village Hall; guardian – Judith Broadley.*



*Speen's defibrillator is on the front of Speen Stores; guardian Paul Rogerson.*

## So - what do in the case of a Medical Emergency

1. **Assess whether the patient is breathing. If the patient is not breathing a cardiac arrest is likely and a defibrillator needs to be attached to the patient ASAP.**
2. **Ring 999** ask for Ambulance and inform the Ambulance Service that the patient is not breathing.
3. **If 2 people at present one should start CPR straight away. The Ambulance Service will provide verbal instructions as appropriate for the situation.**

**Please take some time to familiarise yourself with the best location for you as you may be called into action at any time.**

## CHILTERNSCLOCK CLUB

Bob Kemp

For over 16 years the Chilterns Clock Club (given its full name) members have been meeting at North Dean Village Hall on Thursday evenings (7 - 9.30pm) September to early June - some 38 meetings/year).

The Clock Club has its own resources for the repair/upkeep of mechanically driven clocks (spring or weight driven as the power source) and with access to specialist tools.



Mechanical clocks vary from face diameters of 2" to 24+". The cases being somewhat bigger in various materials (wood, slate, metal, plastic). The most common clocks are mantle clocks, wall clocks and longcase (grandfather) clocks.

Support for newcomers is readily available as are specialist tools and advice. Come and join us. Subs are currently £40 for a 16 week (Thursdays) term - contact Bob Kemp 01494 563751 for more information.

# M. R. COLLINS

## GARDEN CONSTRUCTION

Est 1979

Driveway, Paving, Brickwork, Fencing  
Groundworks, Excavations, Operated  
digger hire.

We specialise in Block paving and all  
types of slab laying Indian stone and  
concrete offering a start to finish service  
inclusive of excavations muck away,  
supply and fix.

For estimate Phone: 01844 346360  
Mobile: 07774 256732



All Domestic & Trade  
Customers Welcome

- Fencing, Gates,  
Sheds & Decking
- Lawn Mowers &  
Garden Machinery
- DIY & Garden Tools  
Ironmongery
- Compost, Bark &  
Lawn Feed
- Color Gas, Coal, Salt,  
Logs & Kindling
- Servicing, Repairs &  
Spare Parts



## FENCE PANELS

Quality fence panels made in our own workshop

Local Delivery  
No Minimum Order



You can now order online at [www.briantsltd.co.uk](http://www.briantsltd.co.uk)  
01844 343663  
Thame Road, Longwick, Princes Risborough. HP27 9SG

**STIHL** **HONDA** **BRIGGS & STRATTON** **HAYTER**

## electrical expertise for home & garden

- 10 years experience
- Insured & qualified
- Extensive range of services
- Free no-obligation quotes

**POWER ON**  
ELECTRICAL

Contact Barry Davies via email [power-on@live.com](mailto:power-on@live.com) or

**07738 042 842**

## JOHN BISHOP Est. 1972 GARDEN MACHINERY

### Sales & Service



**HONDA**  
LAWN & GARDEN



### Machine Hire

Scarifiers, Cultivators, Strimmers, Mowers  
Hedge Trimmers

Blade/Chainsaw Sharpening & shear grinding.

We also stock a wide range of parts for various products.

### Free Collection & Delivery



Tel No. **01494 563513**

Mob. **07917 106004**

1 Margaret Cottages, Northdean, High Wycombe, Bucks, HP14 4NH



# INREMEMBRANCE

Travis Cranley

## *Death of a Gentle Giant*



Speen lost one of its most popular identities with the passing of Gerard 'Gerry' Cranley at his home on May 7, aged 60, after a sustained battle with cancer.

Gerry was a hard man to miss: a 6 ft 5 in Australian who was a regular sight around Speen and its surrounding fields, walking paths, golf courses – and dinner tables.

He would often be found in the company of his wife, Caroline, their children Jemima and Kieran, and/or with the family's collection of dogs and horses. Or, if alone, he might be spied dreamily swinging an imaginary golf club, only ever a birdie away from a surprise British Open victory.

Gerry and Caroline moved to Speen from London in 2003, soon after the birth of Jemima, now aged 20. Kieran, now 18, was born the following year. They arrived on a whim, finding a rental property near the village shop, and quickly determined to stay.

The couple bought a property nearby, moved again a decade later, and over time Gerry and the family became part of the fabric of the community: valued contributors to the life of the village and cherished and loving friends to many.

A commercial lawyer by trade, Gerry had a number of Speen and North Dean residents and businesses among his clients. He served as a governor of the Speen C of E School and maintained a keen interest in the education of children from the district.

Socially, he was a member of the Ellesborough Golf Club for 16 years. (The club flag flew at half-mast after Gerry's death.) He was always a keen participant in the annual Speen and North Dean Golf Day.

Gerry was born in Perth, Western Australia, the first of six children of his parents, Michael (deceased) and Kathleen. He studied law at the University of Western Australia, practising in Perth until moving to London

in 1988.

With life-long interests in sports, equestrian events and the outdoors, a series of illnesses, injuries and cancer-related treatments curtailed Gerry's activities in recent years. But sickness did not dampen his spirit, nor his genuine joy in meeting up with friends and socialising.

As his health deteriorated this year, Gerry and the family found great solace in the remarkable care and support offered by their neighbours and friends. Meals and cakes arrived regularly, cards and flowers received, tasks and jobs performed, and best wishes and prayers offered up for him.

He died peacefully at home surrounded by his family, including two of his siblings from Australia. His funeral on May 17 at Speen Church was a packed affair, with fond memories shared of Gerry as a gentle, good-natured man, quick to laugh, ever a storyteller and ever committed to his family. After the service, a social gathering at North Dean Village Hall extended late into the evening.

The family remains grateful to their friends for their continuing support, and for the efforts of all of those who assisted with the funeral service at Speen Church. Vale, Gerry. You will be long missed.

## *Golf Marathon - a Fitting Tribute to Gerry*



In honour of their late friend Gerry Cranley, four local golfers raised more than four thousand pounds for Rennie Grove Hospice Care by participating in a "Day Golfathon" at Ellesborough Golf Club on June 15.

Julian Matthews, Andy Thompson, Keith Fisher and Vinay Patroe played 72 holes from dawn to dusk, walking a distance of nearly 25 miles while swinging and putting their way to a series of surprisingly respectable scores.

Rennie Grove assisted with the care of Gerry at home in his final months, inspiring his friends to take on the charity challenge.

Gerry was a talented golfer and a long-time member of the Ellesborough club.

As his four friends explained on their page at the charity website JustGiving, "Gerry was a great character, an enthusiastic man who cared about others..... missed by many but never forgotten."

# ASTON HEARING

We Are All  
EARS & Hearing

Amersham . Saunderton . Thame

[www.astonhearing.co.uk](http://www.astonhearing.co.uk) . 01494 733840

## UPDATE FOR THAME

We are excited to be moving to a new premises in Thame in early May 2022. Previously Twigs and Twine nextdoor to Waitrose in Greyhound Lane. We will be delighted to welcome you  
Watch this space for details.....



# IN REMEMBRANCE

## *Reg Taylor*



27.08.1943 – 12.05.2022

## *Nick Wheeler Robinson*

who died recently, has been a long-standing and well-known figure in both our villages; his life and achievements will be recognised in the next edition of the Speen and North Dean News.



30.09.1936 – 3.06.2022

# DARVILLS HILL FARM

Charlotte Downing

## *Wildflower fiesta at Darvills Hill Farm*

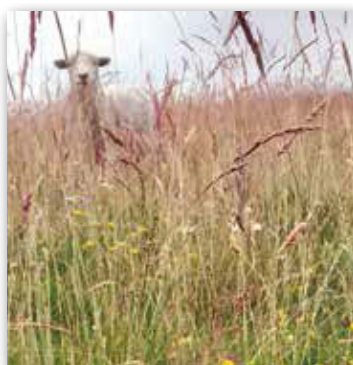
June is THE month for wildflowers in the hay meadows of the Chilterns. We have 40 acres of permanent pasture, currently grazed by our flock of native breed sheep, who are in equal part (much like the teenagers in my life) entertaining and challenging. Ultimately though we hope the sheep will prove to be our very own wildflower meadow managers.

I have spent some months preparing for my mission to establish the wildflower inventory of our various fields. I am not a botanist or ecological expert, so this has been no small challenge but with the help of Magnificent Meadows ([magnificentmeadows.org.uk](http://magnificentmeadows.org.uk)) I have created a way to help me identify which species of wildflowers and grasses we have in the fields.

As a complete novice and totally self-taught, it was with some trepidation



*Common Spotted orchid  
and Birds Foot Trefoil*



*Lady's Bedstraw  
(photo bombed by Bluey the sheep)*

that I ventured into the fields in June to have a go at what is optimistically called a 'Rapid' assessment. I could see nothing speedy about completing 20 samples for each field. However, armed with only a wildlife guide, I have surprised myself at my ability to spot the difference between Crested Dog's Tail and Sweet Vernal grass or identify Lady's Bedstraw and Pignut wildflowers, and I did not anticipate the excitement of finding the orchids which appear to be making a welcome return to the meadows.

As for my end of term report: Doing well in some areas, could do better in others. It does appear the impact of grazing sheep on rotation has given a kick start to the wildflower seed bank that has been dormant in our fields for several decades. Regeneration of the meadows is underway but there is still more work to do.

# WHO'S WHO

North Dean Village Hall - Chair	Dick Pooley	01494 269615
North Dean Village Hall - Bookings	Jeremy Mudie	07880 785983
North Dean Village Fete	Dick Pooley	01494 269615
One Can Food Bank Trust - Trustee	Graham Peart	01494 488327
Pigotts 7 '48' Musical Evenings	Jeremy Hamilton	07834 224589
Riding for the Disabled	Gloria Holmes	01494 488420
Speen Good Neighbours	Pat Richardson	01494 488627
Speen & North Dean Guides	Pauline Hall	01494 488372
Speen & North Dean News - Advertising	Tom Dent	01494 488943
Speen & North Dean News - Chair	Gloria Holmes	01494 488420
Speen & North Dean Toddlers	Sandy Mitcheson	07747 635974
Speen Baptist Church - Pastor	Rev. Tim Deller	01494 488753
Speen Environmental Action Group (SEAG)	Jane Farley	07889 433630
Speen Festival	Cat Cook	01494 488939
Speen Fete - Chair	Clare Morris/ÍHelen Davies	01494 488553
Speen Helping Hospices - Secretary	Maureen Laing	01494 488397
Speen Heritage Group - Chairman	Peter Symonds	01494 488016
Speen Marquee	Greg Cook	01494 488939
Speen Playing Fields	Tony Bobroff/Matt Davies	07768 330273
Speen C of E Infant School - Head	Jacque Coles	01494 488321
Speen School PTA - Co-Secretary	Fleur Dillon	07793 458698
Speen Stores	Ruban Kantharuban	01494 488258
Speen Tennis Court - Secretary	Philippa Lane	01494 488453
Speen Village Hall - Bookings	Sue Taylor	01494 488500
Speen Village Hall - Chairman	Bill Groves	01494 488180
Speen WI - Secretary	Jenny Pearce	01494 562333
St John's Parish Church	Revd Tony Bundock	01844 347741

## LACEY GREEN PARISH COUNCIL

Councillors for Speen

Roger Craft  
Philip Suter

r.craft@laceygreen-pc.org.uk  
p.suter@laceygreen-pc.org.uk

## HUGHENDEN PARISH COUNCIL

Councillors for North Dean

Simon Kearey

Simon.kearey@hughendenpc.org.uk

## BUCKINGHAMSHIRE COUNCIL

Councillors for Speen

Carl Etholen  
Shade Adoh  
Robert Carington  
Steve Broadbent  
David Carroll  
Clive Harriss

Carl.Etholen@buckinghamshire.gov.uk  
Shade.Adoh@buckinghamshire.gov.uk  
Robert.Carington@buckinghamshire.gov.uk  
Steve.Broadbent@buckinghamshire.gov.uk  
David.Carroll@buckinghamshire.gov.uk  
Clive.Harriss@buckinghamshire.gov.uk



# BEECHDEAN

## Farmhouse Dairy Ice Cream



Now available from  
**Hughenden Village Store and Coffee Shop**

- 130ml Beechdean Farmhouse 'Spoon in Lid' Tubs •
- Vanilla, Double Chocolate, Strawberry, Salted Caramel, Mint Choc Chip, Honey & Ginger and Lemon Sorbet

**Special Offers Available in-store!**

- 1 Litre Beechdean Farmhouse Tubs •
- 2 Litre Beechdean Farmhouse Vanilla Tubs •

**Hughenden Village Store and Coffee Shop**  
Coombe Lane, Hughenden Valley, High Wycombe HP14 4NX

 @HughendenValleyShop1



    
@BeechdeanGroup



**Opening Hours: Monday to Friday : 7.30am – 6pm, Saturday : 8am – 4pm, Sunday : 8am – 3pm**





# Homes of Distinction

If you are looking for a very special property or have one that would benefit from our award winning marketing then we are ready to act on your behalf.

01844 343131  
Princes Risborough Office  
01494 711677  
Hazlemere Office

FINE  COUNTRY  
[fineandcountry.com](http://fineandcountry.com)