



Winter 2021
Issue 82

THE SPENN & NORTH DEAN *News*

SPENN

simply beautiful gardens

Alchemille has been designing and creating beautiful, innovative, inspirational outdoor spaces since 2004.

From urban courtyards to country estate gardens, we can make the simply beautiful garden of your dreams a reality.

FROM CONCEPT
TO CREATION



Image courtesy
of T Pottinger

01494 488072 • 07909 936718 • design@alchemille.co.uk

www.alchemille.co.uk

Get smart in **your** garden

From comprehensive plant care advice, to regular maintenance or a one-off project, our experienced team is ready to smarten up **your** garden.

For more information contact
Andy Merriman on

07827 290770



Working in association with Alchemille Garden Design

Welcome!

to the Winter edition of
The Speen & North Dean News.

How lovely to be able to put together an issue full of lovely village events once again.

The festival was a resounding success, and even more credit and gratitude must go to the amazing Cat Cook and her team than usual for managing to create such a wonderful collaboration of talent, fun, creativity and entertainment amidst a minefield of ever-changing Covid restrictions.

We welcome Jill Rogerson to the SNDN team. She is particularly keen to involve the younger generation in the content of the magazine, and has written some great articles in this issue. But as always, we cannot celebrate achievements unless we are told about them, so please do remember to let us know if you hear of anything that deserves a mention.

The Speen & North Dean News is mainly funded through the loyal support of our advertisers, for which we are very grateful. If you ever use any of their services, please do remember to tell them you saw their advert here!

Wishing you all a very happy, healthy and more sociable Christmas than last year!

Jacqui Laing

Front cover photo by Jeni Fairey

Next Edition

Copy for the next edition is **due by 10th March** with a planned publication date of early April. Please send photos separately from text, together with captions and a consent form (downloaded from the SNDN website www.speenbucks.org.uk) if any photos are of children. Please send to editor.sndn@speenbucks.org.uk.

With grateful thanks

To Hughenden Parish Council, Speen Festival, Speen Fete, Speen Stores Charity Committee, all our advertisers for their support of this magazine and all the volunteers who deliver it to your door. of this magazine.

List of Advertisers

Alchemille Garden Design, Andy Ellis Tree Surgery, Ashridge Home Care, Aston Hearing, Beechdean Farmhouse Dairy Ice Cream, Briants of Risborough Ltd, Buckmoorend Farm Shop and Kitchen, CG Tree & Garden Services, Coles & Blackwell, Foursquare Land, Fraser Morgan School of Dancing, Hypnos Beds, JNP, John Bishop Garden Machinery, Leigh Lewis Optometrist, Lloyd's Wines, Lovell Fuels, Martin Holman's Pest Control and Services, MD Courier Services, MR Collins, Nick Higgins Forestry and Fencing, The Painted Kitchen Company, Paul Newman Ltd, Rowena's Therapies, Speen Pilates, The Harrow Pub, The Smart Garden Company, Tudor Travel, Village Environmental Services.

Contents

Speen Stores	5
North Dean Quiz Night	5
Speen Helping Hospices	7
Speen Church	9
Speen School & PTA	10-11
Tiddlers & Toddlers	11
Speen WI	13
North Dean Memorial Hall Celebration	15
Speen vs North Dean Golf Day	15
Duke of Edinburgh Award	16
Congratulations to Edie & Lotte	17
Speen Village Hall	17
Speen Festival	18
Speen Heritage Group	23
Speen Fete Distribution of Funds	23
Recipe	25
Wildlife Watch	17
Speen Environmental Action Group	28

Welcome Packs

The Good Neighbours scheme was set up many years ago and is now run by Pat Richardson in Speen. The service is to provide new Speen residents with a Welcome Pack of village information, so if you know of anyone new to the area please call Pat Richardson on 01494 488627.

Village News

If you are not already signed up to The Village Messenger do email Village@SpeenBucks.org to be put on the mailing list, with the word 'include' in the subject line - they will keep you up to date via email on a monthly basis with all the latest village news and important dates.

If you use the services of any of our advertisers please do mention that you saw their ad in The Speen & North Dean News




**Handmade in
Princes
Risborough**
 with a **10 Year
Guarantee**

The beauty of sleep



At Hypnos, comfort comes guaranteed. But whilst each Royally Approved bed is individually handmade by master craftsmen, using the very finest natural and sustainable materials, it is you who carefully designs the look of your bed and creates a majestic centrepiece for your bedroom. So, to be sure that you enjoy a beautiful night's sleep and awake feeling revitalised and refreshed, visit our Showroom and design a Hypnos bed that's just right for you.



HYPNOS®

THE MOST COMFORTABLE BEDS IN THE WORLD

Visit our Showroom: Monday to Thursday 9.00am to 5.00pm | Friday and Saturday 9.00am to 4.00pm

Hypnos Limited | Longwick Road | Princes Risborough | Bucks HP27 9RS

T: 01844 348200 | www.hypnosbeds.com

Alternatively, visit your local Hypnos Retailer:

Aylesbury Lucas Furniture **01296 486255** | **Gerrards Cross** Crystal Carpets & Furnishings **01753 889230**

High Wycombe Beadle Chrome Ltd **01494 523249** | **Thame** Greens Furnishings **01844 212560**

Hypnos is proud to be Carbon Neutral, complying with PAS 2060.

SPEEN STORES UNDER NEW MANAGEMENT

Jill Rogerson

We are delighted that our village shop has been taken over by Ruban, following many years of fantastic service to the communities of our two villages by Ali, Bob and Connie.

The shop has undergone a refurbishment and, after a week's closure, welcomed villagers with a reopening party on Saturday 16th October.

Ruban says "I am Ruban from High Wycombe. We are a family of four: my wife Vicky and my two sons Sanjeev and Sanush. Three months ago, I bought the splendid Speen Stores! I am really happy to join the local Speen community. We have been overwhelmed by the love and support of everyone. Every day, I look forward to coming into work so I can meet all the lovely people in Speen. Speen is a natural beauty and the people and their culture adds more beauty to it! I hope to form a bond with all the locals and serve their needs as their local shop owner".



Speen Stores	
OPENING HOURS	
Monday	8AM-7PM
Tuesday	8AM-7PM
Wednesday	8AM-7PM
Thursday	8AM-7PM
Friday	8AM-7PM
Saturday	8AM-7PM
Sunday	9AM-5PM

NORTH DEAN QUIZ NIGHT

Dick Pooley

This event was held in the North Dean Village Hall on Friday 29th October, where fifty-six keen "quizzers" enjoyed a great night stretching their "grey matters". There were six rounds of ten questions on specific subjects and one final round of twenty questions on General Knowledge.

After three or four rounds there was an interlude for everyone to enjoy some very tasty fish & chips, freshly cooked by "Prestwood Plaice".

The contest continued with team "Friday Soiree", narrowly pipped at the end by the "Young Ones" a team made up from Speen. The individual average team prize went to the "LillyWhites".



Our grateful thanks to the quiz master extraordinaire Geoff Smith and his delightful wife Clare, who both ran the whole evening very well. Also thanks to Kim Hemson and Judith Broadley for organising the food and the quiz master respectively. Everyone who attended, enjoyed the chance to meet up again with friends and neighbours.

Our next event will be Christmas Carols in the Hall on Wednesday 22nd December, all welcome.

HOME REARED MEATS,
LOCAL PRODUCE
& HOME COOKED FOOD

BESPOKE GIFT HAMPERS



Free Home Delivery &
Contactless Collections

Chequers Estate | HP17 0UT
SHOP Tues - Fri 10 - 6 & Sat - Sun 10 - 4
KITCHEN Fri - Sun 10 - 4
www.buckmoorendfarm.co.uk

LLOYD'S
WINES

INDEPENDENT WINE SPECIALIST

POP IN OR SHOP ONLINE
lloydswines.com

RETAIL & WHOLESALE



FREE LOCAL DELIVERY & EVENTS

07547 645917

Upper Warren Farm | Hampden Road
Prestwood | Great Missenden | Bucks | HP16 0JL

LOVELL FUELS
OIL DISTRIBUTOR



Still Independent
and Family-Run

YOU are at the heart of our business



01844 202777

www.lovellfuels.com

RELIABLE SERVICE

COMPETITIVE PRICES!

Go online, email us at sales@lovellfuels.com or call us for a quote

SPEENHELPING HOSPICES

Supporting Helen House for Children, South Bucks Hospice at Home, Florence Nightingale and Rennie Groves Hospice Care

Gráinne Suter

Since the last edition of SNDN we have organised one of the big Saturday night entertainments at Speen Festival 21. It was a very lively, fun evening and got great reviews. With a percentage of the ticket sales and bar profits, we raised £1,575 after expenses. We were superbly supported by Andrew Price and the bar staff that evening, support that was much appreciated by the committee.



A wine tasting evening in September with Lloyds Wines marked a new fundraising initiative for SHH. Simon, Sally and Tim did us proud. Guests were welcomed with a glass of Prosecco, Simon followed this with 8 wine tastings along with a cheese and charcuterie platter. We raised almost £600. I think this event will become an established point in our fund raising calendar.

This year's Bridge with Afternoon Tea event in North Dean Village Hall in October raised £416 and drew new supporters along with our regulars, whom we were delighted to catch up with again after a gap of two years. The tea was delicious, a suggestion to offer Prosecco will be given serious consideration by the committee!



By the time you read this we will have held the Christmas Market and we will report back on this in the next edition of SNDN. If you missed the market, don't worry as many of the stall holders can be contacted through our online shop www.shh-shop.org.

Thank you Sassy Santa's for offering to do another fun run for SHH this year. Saturday morning, 18th December is the date, don't forget to come out and cheer them on. As you can see from last year's photo they are a lively bunch!



Ruban, at Speen Stores, has kindly agreed to sell tickets for the Christmas Hamper raffle in the shop. A luxury hamper filled with Christmas goodies. Don't miss out, as you can see below the 2020 Christmas hamper was filled with a quite an array of goodies. Tickets can also be bought via grainnesuter@btconnect.com.



SHH was honoured to be the recipient of charitable donations at the funeral of Michael Brown who died in June. Michael was a huge supporter of SHH and never failed to donate to all of our events. He was a charming gentleman with a wicked sense of humour, who is much missed. We would like to thank Valetta, Michael's widow for her kindness.

Carol singing dates are now arranged: 13th December - along Chapel Hill and offshoots and the school end of Grubbins Lane, 16th December - Hampden Road and off shoots, and 20th December - Studridge Lane, Moses Platt, Cherry Tree Close and the north end of Grubbins Lane from Red House Farm. Listen out for the bells and give the carollers your support. Collectors will be alongside with buckets.

Don't forget if you would like to support or sponsor a fundraising event, offer a prize for a raffle or would like to help us in some way, please contact me grainnesuter@btconnect.com or 07778 803260.

All these dates are on our website www.shh-shop.org

Award winning Design

Extension • Conversion • New Build

SQU4RE



Jeremy Symondson
Foursquare Land Limited
Old Smithy, Great Hampden,
Buckinghamshire HP16 9RF
jem@4squareland.co.uk
tel: 01494 488877
mob: 07789 201616

CG Tree & Garden Services

Tree surgery & felling
Fencing
Hedge cutting, topping & turfing
Woodchips & firewood for sale



Free estimates • qualified staff • fully insured

Please call
07798 896380

THE PAINTED KITCHEN COMPANY



PK
PAINTED KITCHENS.ORG

A: 5-7 DUKE STREET, PRINCES RISBOROUGH, BUCKS HP27 0AT
M: 07768 975 323 • T: 01844 346444 • W: PAINTED KITCHENS.ORG

SPEENCHURCH

Timothy Deller

Now what?

What I feel today is both lament and rejoicing.

I lament that there will be no return to what was normal; that all recognised foundations were shaken to the core and cannot be put back together to look the way they looked in the past.

I rejoice in the opportunity to re-envision, re-create, re-invent and re-imagine the new "normal"; as new paths have to be found and formed.

Even in the unknowing, as a faith community we have taken steps to practice the essence of being Church which is to "religare" the Speen and North Dean community.



Besides our regular weekly activities, to which you are all welcome, we have celebrated some of those social events stifled by the Pandemic: weddings, social gatherings of all ages and genders and interests such as Talent Night, a BBQ along with the English Team towards the world cup and fundraising for Charities like TLG, amongst others.

As I close maybe you remember Christmas past? Come this year and celebrate Christmas present and start the tradition for Christmas future/normal. All are welcome.

*Pr. Tim
Speen Church*



How you can help fundraising for Speen School

Each year the Speen School PTA hold fundraising events to provide vital funds to the school that pay for equipment, school trips and supplies, amongst other things. Due to rising Covid cases across Bucks this term, we have had to cancel some of the events planned which means our reliance on our passive fundraising schemes is even more important. Schemes such as Easyfundraising, AmazonSmile, Stikins name labels and Your School Lottery are steadily bringing in some funds. If you are able to support the school via any of these initiatives then please read on!

Do you need labels for your child's school uniform?

Stikins name labels for clothes, shoes, lunch boxes, sports kit and all school items. Easy to use - no sewing or ironing required. Labels can be ordered online at stikins.co.uk. Every purchase will earn the school valuable commission when you quote the fundraising number: **18408** during checkout.

Do you shop online?

Then you could help us raise important funds by going to your chosen retailer's website via www.easyfundraising.org.uk. It won't cost you more to shop and every purchase via easyfundraising will raise funds for Speen School. There are over 4,000 retailers on easyfundraising, for example ebay, Sainsburys, Marks & Spencer, Amazon, Argos and GoCompare. A full list of retailers can be found on their website.

How do I use it and help Speen school?

- 1) Log into www.easyfundraising.org.uk.
- 2) Create an account and ensure you select 'Speen School PTA' as your chosen charity.
- 3) When you are ready to shop, log into your account and search for the retailer you wish to purchase from.
- 5) The retailer will automatically notify easyfundraising of your purchase and make a donation to the PTA.
- 5) You can also add an easyfundraising icon to the toolbar of your search browser so that you are given a prompt when on any website where a donation is available. It can be easy to forget to make online purchases via the easyfundraising website so this icon is very handy in ensuring maximum donations for your online shopping.

Do you shop with Amazon?

If so, did you know that you can help us raise funds by shopping at AmazonSmile instead. AmazonSmile is the charitable arm of Amazon and they will donate 0.5% of all eligible purchases to Speen School. AmazonSmile works in the same way as Amazon, however, it is accessed via www.smile.amazon.co.uk

How do I use it and help Speen school?

- 1) Log into www.smile.amazon.co.uk
- 2) If you already have an account with Amazon, use the same log in details to access AmazonSmile, or create a new account.
- 3) You will be directed to a page where you can search for 'Speen School' and then select 'Speen School Parent Teacher Association' as your charitable organisation.
- 5) When you shop your donations will automatically be made to us on all eligible purchases.

We can take your spent printer cartridges

We have teamed up with 'Empties Please' to raise funds by recycling empty printer cartridges. Simply bring your Brother, Canon, Dell, Epson, HP, Kyocera, Lexmark, Xerox or Ricoh empty cartridges to school and put in the labelled black bin by the gazebo. Please note that cartridges must be branded cartridges only. We cannot accept unbranded cartridges even if compatible with the aforementioned brands.

Can you spare £1 per week to support Speen school (and be in with a chance of winning £25,000)?

We run a weekly lottery in conjunction with Your School Lottery (www.yourschoollottery.co.uk) whereby participants can be in with a chance of winning up to £25,000, plus other available prizes. Tickets cost only £1 per week and you can participate for as little or long as you like. When buying a Your School Lottery ticket you can select the frequency of your ticket purchases and how many tickets you wish to buy at any time. It's very easy to set up and every time you play, a proportion of each ticket sale goes straight to the school. We have a target to sell 50 tickets per week. So far we are at 11 tickets. If you would consider signing up for one of the tickets to help us reach our target please go to www.yourschoollottery.co.uk.

Thank you for your ongoing support of our school and please let your family and friends know about these schemes so that we can maximise our fundraising opportunities.

Vanessa Samuels
PTA Co-Chair

SPEEN SCHOOL & LITTLE APPLES PRESCHOOL



The popularity of Little Apples Pre-School, at Speen School, is growing!

It has worked so well moving the village pre-school in 2019 onto the school site, enabling the children to now spend five years at the school.



Our pre-schoolers have a lovely time, whether that be:

Learning with numbers... Exploring the village... Splashing through the mud... Or learning with water.

They love seeing older siblings and friends on the school playground at break-times and the Reception pupils and pre-schoolers share an outside balcony area for outdoor learning too.

With the increase in numbers, we are looking to create an outside area next to their indoor learning area. Installing a play surface, complete with attractive outdoor play resources, is likely to be costly, so we are appealing to anyone in the local community who may have experience (or just time) to try and secure some grant funding for us. Do email the school office office@speenschool.com if you think this is something you can help us with.

Jacquie Coles, Headteacher

TIDDLERS & TODDLERS

Alex Piroli

Speen and North Dean
tiddlers & toddlers

Join us for play, toys, craft and lots of fun!

Tuesdays (term time)
9.30-11.30am
Chapel Hall
Speen Church

For children 0-4yrs
with their parents and carers
ALL WELCOME!
Cost £3 per family
(includes healthy snack for children and
tea/coffee for grown ups)

Contact:
speennorthdeantoddlers@gmail.com



We are so pleased to confirm the return of the Tiddlers & Toddlers Group at Speen Church!

After a tough time over the summer we have opened our doors again and it has been great to see such a good turn out, especially towards the end of the term.

For just £3 per family there is a huge range of toys for all age ranges to give our little ones an opportunity to explore and interact with other children, and for us mums to have a well earned sit down with a cup of tea/coffee, chat and a biscuit. Also included is a healthy snack for the children, which is provided by a parent each week on a weekly rota.

We have some great activities planned for the term up until Christmas and really encourage people to come along and spread the word amongst friends and family.

We really want to promote involvement from all mums (and dads!) and welcome any ideas for activities that you would like and we will endeavour to make it happen. These sessions offer the children a fantastic change of scenery, especially now the weather is turning and the options are more limited outdoors!

Do come and join us every Tuesday morning between 9.30-11.30 (term time only) and we look forward to seeing lots of new faces this coming term!

THE HARROW

Serving great food 7 days a week



**YOUR LOCAL, FAMILY AND DOG FRIENDLY PUB
SERVING DELICIOUS, FRESHLY PREPARED FOOD,
LOCALLY SOURCED REAL ALES
AND A GOOD SELECTION OF WINES**

FOOD SERVED:

MONDAY-SATURDAY : 12NOON-9PM

SUNDAY : 12NOON-5PM

QUIZ NIGHT TUESDAY 8PM

*There's always something going on at The Harrow Pub,
so get yourself down here
and enjoy the beer, the entertainment and the company.*

01494 564105

WARRENDENE ROAD, HUGHENDEN VALLEY, HIGH WYCOMBE HP14 4LX

WWW.HARROWHUGHENDEN.CO.UK



August saw restrictions lifted and Speen WI members gathered in the Village Hall for the first time in 17 months. It was virtually a full house and included the new members who had joined at our second Garden Party in the Summer.

The beautiful locally grown flowers arranged by the speaker, without using oasis, was taken home by the lucky winner of the raffle. Gifts of tea bags were there for all in September when Dananjaya Silva, whose family own tea plantations in Sri Lanka, shared his extensive knowledge of tea growing, blending and making in September. Ranging from the earliest tea from China to modern day blends we gained a real insight into the work that goes into providing our daily cuppa. We were quite nervous about asking him what he would like to drink afterwards.

Also in September, three members joined other WIs from all over Buckinghamshire for a parade of WI Banners. This should have been held in 2020 to celebrate 100 years of the WI in the County. But like so many other events last year it was not able to happen and so on a lovely sunny September day, we walked around Aylesbury showing these pieces of social history. Our own banner was made in 1926 by the ladies of the first WI in Speen. All hand embroidered, it shows a scene of



a bodger in the woods, a typical occupation back then. There were many other examples from that era and also throughout the years since, with the newest being made only last year.

Our October speaker brought memories for some and an amusing insight for others as Eileen Gershon reflected on her nursing training in the 1960s and what life was like as recorded in her letters home. These memories have now been published as a book being sold for charity and has so far raised an astonishing £25,000.

November will be our Annual Meeting with a chance to find out about the History of Pantomime and in December we shall be finding out about the art of making cheese – with samples to taste as well.

Last year we enabled a water tank to be installed in a South African Village and we are delighted that it is now providing clean fresh water to everyone there. How that must have improved so many lives and prevented so much illness.



We are looking forward to having a complete year of WI activities next year with meetings, visits and social events. Our Birthday Supper will get 2022 started and after that we again have an interesting variety of speakers throughout the year.

Our programme is always in the Village Diary and we welcome any visitors to see what we have to offer.

Speen Pilates

STRETCH • STENGTHEN • CONTROL



BOUTIQUE PILATES TRANSFORM YOUR FITNESS

Pilates can address structural imbalances, pain and difficulty with movement. It aims to enhance your posture, strength and flexibility, body tone, stamina and general fitness whilst releasing unnecessary tension.

ONE TO ONES ON STUDIO EQUIPMENT

One to one tuition offers accelerated learning and improvement, the Reformer uses spring loaded weights to improve your posture, strength and stamina leading to a toned body.

SMALL GROUP MAT CLASSES

Monday and Tuesday at 9.30am and 6.30pm
Thursday and Friday at 9.30am

I also offer bespoke classes for groups of up to 6 friends!

More details on the website
Booking essential

★ ★ ★

The Studio at Midmede, Chapel Hill, Speen
Amanda 07733 307475
amandapilates@btinternet.com
www.speenpilates.co.uk



NORTH DEAN MEMORIAL HALL CENTENARY CELEBRATION

Nick Cliffe, Trustee



On 14 August, over 70 North Dean villagers, families and friends, with an ensemble from Piggotts music camp, met in the Field under a radiant blue sky to commemorate the opening of the Memorial Hall in 1921 (and to celebrate the end of the latest COVID lock down!).

A Centenary Pavilion Clock was unveiled by Judy Keen, (Peter's wife, as illness unfortunately kept him at home) and Dick Pooley, Committee Chairman. Thanks to Jeremy Mudie for sourcing an excellent addition to the Hall.

The core Memorial Hall is a World War 1 'hut' donated by George Holt Thomas "for the benefit of the villagers". He lived at North Dean House and it is believed to have come from RAF Halton, together with the three similar cottages near the bottom of Clappins Lane – all being black and white, the colours of GHT's prize-winning Friesian herd founded here in 1916. At the end of WW1, GHT owned 'AIRCO' which was the largest aircraft manufacturing company in the world and he was actively involved in forming 'Imperial Airways'. He moved to France and died there in 1929. He has our grateful thanks and a tribute is now displayed in the Hall.

The party continued with an excellent hog roast organised by Steve Rogers, with side dishes and drinks provided by Melinda Pooley. An excellent afternoon bringing villagers together again.

SPEEN vs NORTH DEAN GOLF DAY

Dick Pooley



This year's Speen vs North Dean Village Golf Day was held on Thursday 28th October held at The Lambourne Club, in Burnham.

Obviously due to the pandemic situation, the Villages had not been able to play for the Spring trophy, so it was unsurprising that nineteen golfers from Speen and seventeen from North Dean took part in this Autumn competition.

The Lambourne is a fabulous venue and it was thanks to Francis Gater, (member), that we were able to play at this prestigious golf club. The course was in excellent condition and thus it was not too surprising that scoring was generally very good.

Jo Allan, the Speen captain, organised the day superbly well, and was able to give out prizes as follows:-

Overall stableford winner James Dow (Sp), with 41 points. In joint second place, all with 39 points, Martin Hearn (ND), Greg Cook (Sp) and Duncan Dow (Sp.). Nearest the Pin was Barry Woledge (ND) and the Longest Drive was won by Francis Gater (Sp).

With a drum roll, for the tightest of winning margins (0.2 average points) North Dean won the Golf Challenge Trophy, originally presented to the Villages by Janet and Ivor Beeks.

Both Spring and Autumn trophies are kept by the winners for one year.

North Dean players look forward to hosting the Spring competition in 2022, at a venue to be decided.

DUKE OF EDINBURGH AWARD

Jill Rogerson

A number of younger residents from our two villages are taking part in the Duke of Edinburgh Award Scheme, started by the Duke in 1956. Undertaken through schools or youth organisations, young people aged 14-24 years old can follow a DofE programme at one of three progressive levels which, when successfully completed, lead to a Bronze, Silver or Gold Duke of Edinburgh's Award. There are four sections at each level: Volunteering, Physical, Skills and Expedition, with an additional Residential section at Gold Award level.

James and Felix Palmer (aged 17 and 15), who live in Lower North Dean, have completed their Silver Awards and are working towards the Gold Award.

Both are currently involved in a project for the volunteering section of the Award, training a puppy called Nelson for the charity Hearing Dogs for Deaf People, based locally in Saunderton.



Felix (left) and James (right) with Nelson

Nelson came to the family as an 8 week-old puppy and will be with them until he is about 18 months old when he will be matched with a recipient who is also part of a family, it being important that he is used to a busy environment. James and Felix, with Nelson, attend a training session each week at the Hearing Dogs Centre where they learn how to train Nelson so that he will be able to alert his deaf recipient to sounds they would otherwise miss, such as the doorbell, timers and especially fire alarms. They also help Nelson to become accustomed to everyday life, for example, by travelling by bus and taking him on a trip to M & S in Wycombe.



James and Nelson on the escalator at M & S

For his Silver Award, (volunteering section), James assisted an elderly neighbouring couple through the pandemic lockdowns, buying their shopping online, receiving the delivery and taking this to them, he also posted letters and did any odd jobs they needed. He has recently completed his Gold Award expedition in Ashdown Forest, the only boy with 12 girls! He says that the Award Scheme has given him a new perspective and taught him essential skills and experience for later in life. He is a keen runner, improving this as part of the Physical section of the Scheme – he and Felix both train four times a week with Speed Demons, a local athletics club. James has run for Buckinghamshire, and twice at the English Schools national cross country championships representing Berkshire schools.

While enjoying running, Felix says his main interest is music and he plays the saxophone. He has been helping his music teacher with the junior school band which enabled him to complete the volunteering section of his Bronze Award. He is very involved with James in training Nelson and believes that this responsibility has given him valuable experience, especially if he owns a dog in the future.

More widely, both have been involved in local community activities: James in helping with the design of the website of this year's Speen Festival and Felix having the starring role in the Festival production as Peter Pan in 2019.

CONGRATULATIONS TO EDIE & LOTTE

Jill Rogerson

Two of our younger Speen residents, Edie Vernol and Lotte Cook, aged 16 and 17 respectively, have recently been selected as the Mayor of High Wycombe's Cadet (Edie) and the Lord-Lieutenant's Cadet for Buckinghamshire (Lotte). Chosen by the Commanding Officer of 332 High Wycombe Squadron Air Cadets, which meets at Daws Hill, their duties in the coming year will be to support the Lord-Lieutenant and the Mayor of High Wycombe at forthcoming ceremonial occasions, such as Remembrance Sunday services and events to mark the Platinum Jubilee of Her Majesty the Queen.

Lotte says she originally joined only because her sister Jess was interested but didn't have enough time ... so she went instead. It turned out to be one of the best things she ever did. She believes it has really improved her leadership skills and self-confidence, and has also introduced her to people who she would never normally meet. She says it is hard to pick a favourite part of Air Cadets because there is such a range of activities on offer.

Edie says she joined the Air Cadets to be involved in an interest outside school; she believes that the experience has built her confidence and her ability to deal with new situations. The Air Cadets have a regular opportunity to camp and she feels that this has been an excellent way for all involved to 'get along together' in a completely different setting than they are used to.



Sergeants Edit Vernol (left) and Lotte Cook (right)



Lotte's investiture as Lord-Lieutenant's Cadet for Buckinghamshire



Edie (to the right of the photo) at the Battle of Britain service in September at All Saints Parish Church, High Wycombe with Charter Trustee Cllr. Lesley Clarke, OBE, the Deputy Mayor of High Wycombe

SPEEN VILLAGE HALL

Bill Groves, Chairman Speen Village Hall Management Committee



I am pleased to say that life at the Village Hall is gradually returning to near normality, with the Bridge Club, Yoga Classes and W.I all recommencing meetings after the long break.

We do have available two full size table tennis tables and equipment so if any one would like to organise a group to play in the Village Hall please contact me. on 488180.

Sadly, owing to ongoing concerns about Covid we reluctantly decided not to hold the Christmas Fayre this year.

SPEEN FESTIVAL 2021

A YEAR LIKE NO OTHER

Cat Cook

My very great thanks goes out to the team that worked with me to make this happen, in much shorter timescales, filled with uncertainty, plus the many volunteers who supported them.

- Our Festival landlord – Andrew Price
- My wise sage and admin aficionado – Tom Dent
- The ticket inspectors – Sue Taylor and Christopher Boyce
- The chairmen and table shifters – Steve Binder and Eamonn Barrett
- The money man – Nick Knight
- The advertising exec – Philip Suter
- Online box office creator and controller – Lotte Cook
- Website designer – James Palmer
- Sound and Lighting – Jessica Cook



I fully intend to lead another festival in 2023 but it will be my last at the helm. I started my involvement in 2013 supporting Sam and Kate Laughton by doing Festival marketing and publicity and then stepped into their shoes for Festival 2017. I very much hope we can get more new faces involved in some of the core roles next time.

Our Festival is a celebration of local arts, creativity and our environment. What appears on the Festival programme is whatever the community generates and this year we had a marvellous collection of old and new events. Huge thanks to those who stepped forward with their skills and passions to deliver a brilliant programme of entertainment, learning, music, experiences, insight and laughter. Even in this year of limited capacities, our brilliant events and notably, the bar, we still managed to generate a healthy profit of £8,000.

We have routinely kept some funds to secure future festivals, but given our consistent successes, we are going to reduce that pot. This year we are donating £12,000 to Speen organisations, local charities and those charities nominated by our event organisers. I'm sure you all agree, that is a truly amazing achievement for our small village.

The beneficiaries are:

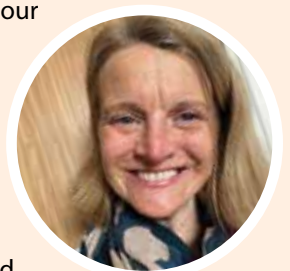
Speen School PTA
Speen Playing Fields
Speen Helping Hospices
Speen Chapel
Agape
Life in Full Trust (LIFT)
One Can Trust
Wycombe Refugee Partnership
Wycombe Homeless Connection

Woodland Trust
The Calm Zone
Oxford Animal Sanctuary
Humane Society International (dogs)
Florence Nightingale House
Berks and Bucks Wildlife Trust
The Princes Centre
RSPB
Lindengate



By any measure Festival 2021 was 'a success', but I do always wonder about the people who didn't come to any events at all; what could we have done differently to reach more people? Personally, what I enjoy most is connecting people, ideas and opportunities. I love that newcomers to the village were finally able to see what Speen is capable of and get to connect with so many more people. I love that post-GCSE teens delivered our website, online box office and the sound and light provision. I love that Emma Large, who first directed our Festival play post-GCSEs in 2017 and then post A-Levels in 2019, returned after her 2nd year of drama at Uni to lead our theatrical endeavours. COVID (and the weather) got the better of us having a 'big show' this year, but she still delivered workshops for us and the children of Oakridge School in High Wycombe as part of our educational outreach efforts.

As a result of Festival 2021, we now have a Speen Writers' Forum, there are likely to be tap dancing lessons in the village hall, people have been going to the Repair Barn to get items fixed instead of being thrown away. The Festival evolves us all and I'm proud to be part of it.



Cat Cook



FRASER-MORGAN SCHOOL OF DANCING

***** Naphill Village Hall *****

RAD BALLET for ages 3+



For more information
please contact
01494 816539 or
07974 121081



ROWENA's

(MCThA) (AoR)
NHS Register of Approved Reflexologists
Karuna & Reiki Master

Aromatherapy
Caci non-surgical face lifting treatments
Reflexology
Aqua detox
Indian head massage
Acupressure massage
Energy healing

Treatments carried out in
home based salon in Bryants Bottom

Call Rowena for more information
or a free consultation
Tel: 01494 488430
Mob: 07855 848261
rowena.j.templeman@gmail.com

Coles & Blackwell

Car Service & Repairs

Book online at:
www.colesandblackwell.co.uk

Quality car servicing and repairs much closer than you think!

Where are we ? You will find us 300 metres down the small lane opposite the top of Bradenham Wood Lane in Walters Ash, High Wycombe HP14 4UX

Established in 1959



Servicing

Did you know you can get your car serviced by us without invalidating your manufacturers warranty? Legislation passed a few years ago means that you can now choose any garage of your choice to service your vehicle.

Courtesy cars

We have a fleet of new loan cars at your disposal whilst we service your own car or repair bodywork damage. Best of all - they are FREE OF CHARGE!
All part of the service you come to expect from Coles & Blackwell

air conditioning

mot testing

vehicle servicing and repairs

crash repairs

tyres, clutches & brakes

computerised diagnostics

batteries & exhausts

Opening Hours:
Monday to Friday 7.30am to 5.30pm

01494 563102

SPEENFESTIVAL2021





TUDOR TRAVEL

Taking you there in style



22 – 33 seat Midi coaches for
Group travel, Corporate events,
Days out, Local and long distance.
Fully licenced and insured and COVID compliant.
Private & Business accounts welcome.

MD **COURIER** **SERVICES**

Offering a fast professional
and reliable service at an affordable
price, whether it's around the corner
or across the country.

We have you covered.

info@tudortravel.co.uk

01494 488887 / 07771 881245

Speen Bus Services

Ward Jones of North Dean has kindly provided further information about the bus services which used to serve the village during the mid-1900's.

Evidently both Speen and North Dean villagers used to rely on the old number 34 service from High Wycombe, which ran from Frogmoor in the town centre making 6 stops ending at the terminus outside the former King George pub at the top of Chapel Hill, Speen. The penultimate stop was North Dean, where the bus stopped outside the Sportsman's pub, which was close to the village hall.

The route run by the Thames Valley Traction Co. was acquired from the Penn Bus Co in the 1930's and operated until about 1970 when it was taken over by Alder Valley. Post war bus timetables for the route 34 service show 18 buses a day running from Speen from about 6.35am every weekday morning with the last bus arriving back in the village at 10.42pm. The Sunday service comprised some 10 buses a day.

During the war the service was provided by a Leyland Tiger bus (Reg no. ABL 761) and then in the 1960s by a Bristol LL6B (Reg no. FMO 949). This bus spent its working life travelling up and down the valley averaging an annual mileage of around 55000 miles. It was withdrawn and replaced in about 1967 but continued in service elsewhere until 1977. During its working life its total mileage is estimated at some 800,000 miles. It has recently been recovered by Ward Jones and is apparently under cover somewhere in Maidenhead awaiting restoration.



Leyland Tiger bus opposite the Old George with Turnip End in the background.



The Bristol LL6B bus No. 34 service in North Dean.

SPEENFETE

Helen Davies & Clare Morris, Co-Chairs, Fete Committee

Distribution of funds

Thanks to everyone who supported Speen Fete back in July. We had a great day, raising over £5,000, which we have been able to distribute across our two chosen charities and all the village organisations that were involved.

• Speen Helping Hospices received **£1,100**



• One Can Trust received **£515**

"We really do appreciate this gift as the demands on the Foodbank continue at a very high level. Last month we delivered 724 parcels feeding a weekly average of 346 people. *Peter Green, Treasurer*"

The following organisations each received **£315**

- Speen School P.T.A
- Speen Village Hall
- Speen W.I.
- Speen Playing Fields
- Speen Environmental Action Group
- Speen Church
- Speen Save Our Pub Group
- Speen Tennis Club
- Speen Guides
- Speen & North Dean News

(The SNDN kindly donated their share to One Can Trust)

• Speen Heritage Group received a donation of **£100** to support their work.

Preparations for next year's fete on **9th July 2022** will begin in the new year. If you would like to be involved, either stand-alone or through a village group please do let us know.

Many thanks, Helen Davies & Clare Morris,
Co-Chair, Fete Committee
fete@speenbucks.org.uk



"Ashridge is run by super people who are caring, thoughtful about needs, courteous and respectful. The two carers we have worked with are themselves delightful people who have made a huge difference to our father's life. Both are calm, warm, helpful people who do not patronise and have provided our father with excellent care and company."

Better at Home

Live-in home care is a real alternative to residential or nursing home care.

The pandemic has had a catastrophic impact on care homes with residents and their loved ones often having to endure terrible tragedy and hardship whilst separated from each other. Unlike many countries, here in the UK, residential care homes are the go to option for caring for elderly people; there are over 400,000 people living in care homes and in comparison only a small number have opted for live in care in their own home.

During the last year Ashridge Home Care have seen a great shift in people choosing to go down the live-in care route rather than opt to go into a care home, in fact. There is a rising feeling that perhaps the default option of putting an elderly relative in a care home is not the safest option. Live in care provides one to one care, one carer living in the client's home means much less risk of infection and is safer for both carer and client.

Ashridge Home Care, recently announced a major recruitment drive to help take care of its growing number of clients. Since April last year, Ashridge Homecare has seen a 75% increase in its client base and hired an additional 30 carers. With further growth projected for 2021 they are actively looking to hire over 100 more carers this year to join their 90 strong team.

Ashridge Home Care Founder, Managing Director and Speen resident, Trudi Scrivener, who is passionate about making sure all clients can maintain their independence and grow old with dignity. "Live in care has shown time and again that it is beneficial from both a physical and mental wellbeing perspective. It allows people to stay in the comfort of their own home, amongst their own possessions and memories, yet receive comfort, companionship and professional care as they need it."

Recently voted Best Employer in Buckinghamshire, the team at Ashridge are always looking at how they can improve the quality of life for their clients and have introduced some great new innovations, such as appointing a head chef to help mentor other carers to learn how to cook simple, nutritious meals. They even produced their own recipe book with the help of TV chef and nutritionist, Janet Brinkworth from the BBC's Saturday Kitchen! Other creative ideas include developing a 10 minute yoga routine that carers can do with clients to keep them moving and arranging for a footcare practitioner to teach basic footcare to carers via online sessions.

This innovative approach to providing the very best care has meant that the team have been able to achieve positive outcomes for their clients.



Managing Director and Founder:
Trudi Scrivener

For more information about care options:
Please give us a call on 01494 913447
or visit www.ashridgehomecare.co.uk

RECIPE

Mandy How

Orange and Almond Cake with Brandy Cream

This cake is a favourite at any time of year and goes down a treat with the addition of Brandy Cream at Christmas. Serves 8.

INGREDIENTS

Cake

115g vegetable oil
210g golden caster sugar
1½ tsp almond essence
1 ½ tsp orange essence
1 tsp vanilla extract
300ml soya cream
195g plain flour
3 tsp baking powder
80g fine polenta
80g ground almonds
3 tbsp vegan natural yogurt
Decoration: zest of 1-2 oranges (optional)

Glaze

Zest and juice of 2 oranges
4 tbsp golden caster sugar

Brandy Cream

400ml tin of coconut milk
(chilled in fridge overnight)
or 2 tubs Oatly Crème Fraiche
2 tbsp icing sugar
2-3 tbsp brandy
½ tsp vanilla extract

METHOD

Cake

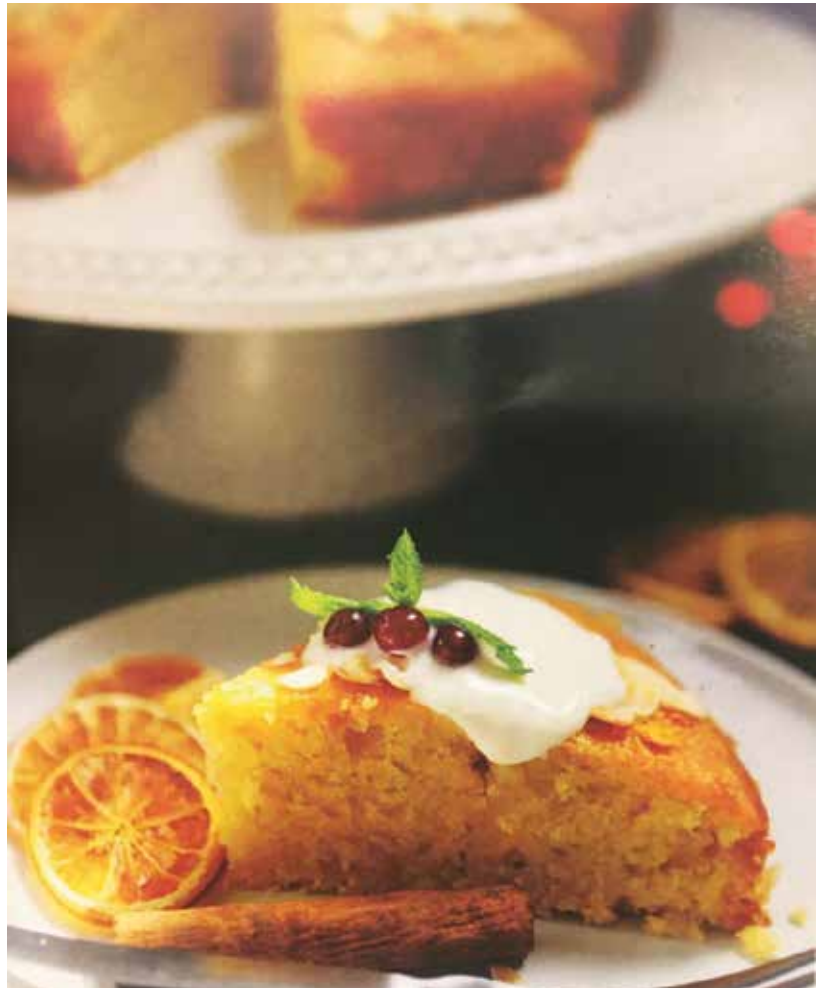
1. Heat the oven to 180° (fan)/350°F/Gas Mark 4.
2. Line a 20cm springform cake tin with baking parchment.
3. Mix together the oil, sugar, vanilla extract, almond essence, orange essence and soya cream until you get a smooth, creamy consistency.
4. In a separate bowl mix together the flour, baking powder, polenta and ground almonds.
5. Add the liquid mixture to the dry ingredients but only just before you are ready to put the cake in the oven (or the raising agents will work too quickly).
6. Stir in the vegan yogurt and gently mix everything together.
7. Pour the mixture into the cake tin and put in the oven for 35-40 minutes or until lightly golden on top and a cake probe comes out clean.

Glaze

1. In a small saucepan, heat all ingredients together on a low-medium heat until the sugar has dissolved.
2. After removing the cake from the oven, leave to cool for 20 minutes before piercing the cake with a skewer all over (although not all the way through) and pour the warm glaze all over the top.

Brandy Cream

1. Chill the tin overnight or place in the freezer for half an hour or so. It needs to be very cold.
2. Scoop out the thick, top layer of coconut cream or Oatly Crème Fraiche in the glass bowl and whisk it.
3. Stir in the sugar slowly until it has mixed in and dissolved. Stir in the brandy and vanilla extract until well combined.
4. Return the cream to the fridge until you're ready to serve.



A. ELLIS *Tree Surgery*

Fully Qualified and Insured Tree Surgeons



We undertake all aspects of
hedge trimming and
tree surgery

For a free, no obligation
quote please contact us

T: 01494 817234 M: 07709 491589

E: info@aellistrees.com

www.aellistrees.com

For fencing enquiries call Mike on:

T: 01494 868466

WILDLIFEWATCH

Peter Symonds

Autumn 2021

Speen festival included a Bat Walk around the village on a very pleasant evening in early September. A group of about 25 villagers armed with electronic bat detectors explored around Cherrytree Close before moving along Studridge Lane where the detectors sprung into life. Pipistrelles were identified from their size and the acoustics detected. At the

open water pond in Water Lane again the detectors buzzed as larger Daubentons' bats swept across the surface of the water taking insects in flight. Previous bat walks in the village have detected both Common and also Soprano Pipistrelles but this year the echo locations calls were at around 48 kHz as opposed to 55 kHz from Sopranos. During the tour reference was made by residents to Long Eared Bats roosting in roof spaces in Abbotswood so at least four species may be present around the village. (These bats are all quite harmless and are protected by law, by the way).

Interesting bird sightings include a Barn Owl on the outskirts of the village and a first wader record for the village that I am aware of. Craig Watson reported one on the Biffas' pond in August described as having a white rump which could possibly have been a Green Sandpiper passing through the area. Ashley Cooper reported siskins in his garden in July which is a further indication that these winter visitors are now nesting somewhere locally. A Little Grebe on a pond in Great Hampden in June was an interesting local record as was a Little Egret which spent four days in Hughenden Valley in August. Various villagers have quizzed me about grey birds strutting about their



gardens. These were some of the 15 young moorhens that have fledged from our garden this year. About 9 remain in the garden but the others have dispersed out to other gardens and beyond. 9 young mallard from a second brood in the garden have also now flown from the village.

Debbie Tilt photographed a large Elephant Hawk Moth

caterpillar on one of the fuchsias in her garden. Its common name is derived from its resemblance to an elephants' trunk. After overwintering as a chrysalis an impressive large pinkish red hawk moth emerges between May and June. A couple of young badgers have died in Speen and another was injured in North Dean all as a result of road accidents I believe. Roe deer have been reported regularly with 5 noted on the way to Great Hampden in September. In the same village Jeremy Symondson was able to film a fox right outside his office window on several occasions during the middle of the day searching for food under his bird feeders.

In the last edition Gill Kent referred to excellent conservation work carried out by the Chilterns Conservation Board on local farmland. Supplementary food has been provided for the benefit of some farmland species with uncommon Corn Buntings and declining Yellowhammers both benefitting. 600 Skylarks were recorded on one of local farms with some 86 species recorded in total.

Please send interesting records to Peter Symonds
01494 488016 psymonds590@gmail.com

MAINTENANCE PERSON NEEDED

North Dean Village Hall is looking for a local maintenance person to assist with the upkeep of the Hall and Grounds on a voluntary basis, with all materials paid for.

If you are interested we'd love to hear from you.
Please contact Dick Pooley at Richardpooley5@gmail.com

Jane Farley

Writing in late October I am hoping that, as you read this, there will have been some good news from COP26 and also as we will know more about government initiatives to cut carbon emissions. One thing is certain is that I am sure it has been difficult to ignore and that many of us will be wondering how all this applies to us here in Speen.

SEAG has been working at a number of initiatives recently including liaising with the Lacey Green parish council about what can be done about the Studridge Lane pond and also discussing the idea of solar panels on certain public buildings. To help with this work please ensure that you have filled in our online survey which only takes 5 minutes to complete. www.bit.ly/seagsurvey21.

Here, in this edition, we include an account of our Speen Festival Home Energy Event and a very informative article about how to assess an area's carbon emissions. It is great to have Elsie's book review and would love to hear ideas from other children and young people in the village.

So much emphasis is put on us as individuals to make changes in our lives. While this is vital SEAG is exploring how working together may be even more effective. Certainly, we should all be encouraging our councillors and MP's to put the systems, regulations and legislation in place to enable us to cut carbon and salvage our damaged bio-diversity before it is too late.

Speen gets an F and North Dean an F+

Tom Dent

We like to think of our community as special, and of course it is. But one thing we don't want is an outstandingly high output of carbon dioxide, which is what we have.

The Place-Based Carbon Calculator estimates the carbon dioxide produced by each community in the country; you can read how it works at www.carbon.place. Residents of the area that includes Speen and Great Hampden each generate an average of 15.3 tonnes of CO2 each year, giving us a grade of F (the worst is F-) and putting us in the highest-emitting 5% of communities in England. This means that 19 of every 20 communities in the country emit less than we do.

North Dean's figure is 13.3 tonnes per person, a scarcely better F+ and still in the country's top 10% for emissions. The England average is about 8 tonnes per person and the national target for 2032 is 2.8 tonnes per person.

Why is our environmental impact so enormous? Compared with the average for England, people who live in Speen and North Dean fly more, consume more electricity, own more cars and drive them more, and consume more goods and services. Many of us also live in detached houses which need more energy to heat.

Some of this is because our community is rural and predominantly affluent. But our carbon dioxide output is higher than other similar communities with those characteristics. So it's high time we began to change. The first step is to find out your own carbon footprint, and a great place to start is the WWF carbon footprint calculator, which you can find at www.footprint.wwf.org.uk/

Book Review by Naomi and Elsie Rogers

'How to Save the World with a Chicken and an Egg' by Emma Shevah (published by Chicken House Books)

The ongoing impact of environmental changes on the world we live in and what this might mean for future generations can be scary for children, but it's important to find ways to keep talking to them about the importance of protecting our planet. There are some great fiction books out there for young readers that can present the issue in an informed but entertaining way, and Elsie wanted to share a really good one in case others might also enjoy it:

Elsie's review: The story is about 2 children, Ivy and Nathaniel, who become friends and work together to help animals and solve a big mystery. Nathaniel knows lots of incredible facts about animals and Ivy can actually talk to animals! There are lots of funny bits and I really like the characters, especially adventurous Ivy. It really made me think about animals and how they feel, and how even doing little things can make a big difference. And I now call all wasps 'John'! I really enjoyed this book and would recommend this to other readers who like animals and adventure.



Speen Festival 2021

SEAG Home Energy Event:

“How to Heat Your Home, Not the Planet.”

By Jeni Fairey and Monica Dent



Our recent event for Speen Festival was very well attended by 65 villagers and we have received a lot of positive feedback.

We had 4 external speakers: Kirsty Shanaghan, from Buckinghamshire Community Energy, gave a highly entertaining account of life as a Climate Change advocate, attempting to put changes into action at home with a sometimes less than enthusiastic husband. Her honest and amusing delivery highlighted ways in which we could all make small changes for positive effect in our own homes. Our favourite was the “Naval Shower” (no, not only washing your midriff to save water): turning the water off whilst soaping up your body/hair, then turning back on to rinse off. Greg Bishop (Next Generation Renewable Energy) and Graham Hazell (Microgeneration Certification Scheme) outlined the latest renewable energy products available for home-owners i.e. solar panels and air/ground source heat pumps and discussed the pros and cons, including retrofitting into older properties. The three contributors from our village, Christopher Weir, Bob Stupples and Bob Moody, gave some really interesting and varied personal accounts of their experiences. Two of them were very pleased with their heat pump installations (both air and ground source), but the Moodys reported a bad experience following their heat pump (air source) installation including high running costs, the overall effectiveness of the system at heating their home, and unwelcome noise (including overnight), all of which had resulted in them changing to a gas boiler. The key message we took away from this is to do your own research thoroughly before going ahead with a heat pump installation. Most importantly, identify a reputable installer to advise you on which system/s is/are appropriate for your home, preferably one approved by the Microgeneration Certification Scheme (the MCS is a charity with a remit for setting standards and providing certification and training). Obviously, different makes and sizes will vary and technology is rapidly evolving in this area. Make sure you see and hear the proposed heat pump/s in action to check for yourself that noise levels (day and night) are acceptable to you and neighbours living close by. Visiting a home similar in size and situation to your own is the best way to make comparisons and gather real-life experiences from those who have taken the plunge already. It was also made clear that the best starting point before installing a new heating system is to ensure the insulation in your home is at the optimum level.

One of our key speakers, Chris Smith, drew attention to the high attendance that evening, saying it is a testament to the fact that a large proportion of our community is obviously interested and keen to do what they can to reduce their CO2 emissions. He envisioned a future where every new home would be its own self-contained energy generation unit. Existing homes need retrofitting, and many communities around the UK are looking towards simplifying this process by sharing energy generation in the form of shared solar arrays, ground source heat pumps etc.

Therefore, SEAG see this as the right moment to ask the village as a whole their views. There is funding from the Rural Community Energy Fund which could possibly be accessed in order to conduct a feasibility study within our village into any possible community Carbon Reduction Projects but we would need a significant level of support before following this up on behalf of the village. There are lots of things which Speen could potentially do to make major CO2 emission reductions e.g. solar panels on public buildings, air source heat pumps under shared areas such as The Playing Fields, “solar streets” where a number of houses get installation at the same time and reduce overall cost. We will not know what is available unless we have an expert come and assess and advise us.

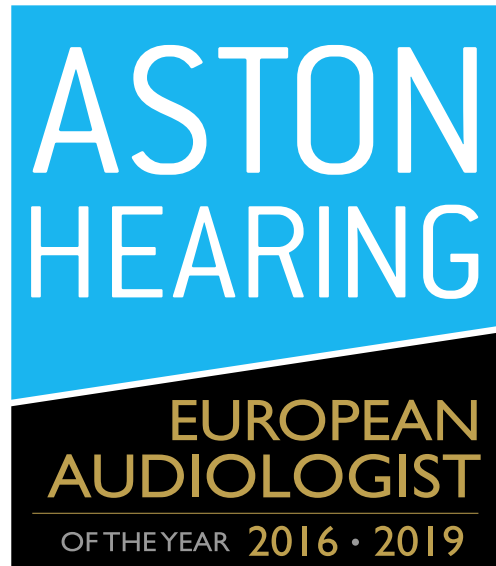
Speen is a very unique community which has shown time and again how they can pull together to do incredible things. A joint effort to reduce our negative impact on the planet is within our grasp but needs our energy behind it (excuse the pun). Therefore, we have put together a very short and simple online survey (no personal details required) which we would urge you to fill in: www.bit.ly/seagsurvey21.

If you would like to discuss our villagers’ experiences further with them or you have experiences to share, please do contact SEAG and we can put you in touch. For more details of our key speakers, please www.speenbucks.org.uk/SEAG.

A summary of Kirsty Shanaghan’s key points for reducing CO2 output from your home is as follows:

- Meat-free days • Turning the thermostat down • Washing machine/dishwasher on at night • LED light bulbs •
- Shorter showers, turning water off while soaping/shampooing • Fully insulate loft space •
- Solar panels • Draught proof external windows and doors • Check whether walls are internally insulated •
- Air/ ground source heat pump • No open fireplace, stoves or radiators waste less heat •
- Swapping to a renewable electricity provider, e.g. Octopus • Electric car, or better still reduced use of car •

For all your Family's Ear and Hearing Concerns



Amersham . Princes Risborough . Thame

www.astonhearing.co.uk

01494 733840



Look out for our monthly
FREE FAMILY HearToday EVENTS
www.astonhearing.co.uk/heartoday



Paul's Plumbing

07786 175123

PLUMBING

Plumbing & Problem solving

Friendly, Reliable & Local

Bathrooms • Kitchens • Taps • Leaks
Tanks • Radiators • Valves • Pipework

Paul Newman Ltd. **07786 175123** | 01494 565573

Based in North Dean.

Local to Speen, Naphill,
Walter's Ash, Lacey Green,
Hampden, Hughenden

VARILUX Xclusive 4D



EMBRACE EVERY DETAIL OF YOUR WORLD

WITH VARILUX XCLUSIVE 4D BESPOKE LENSES



GET YOUR BESPOKE LENSES AT LEIGH LEWIS OPTOMETRIST

LEIGH LEWIS OPTOMETRIST

247 MAIN RD, WALTERS ASH,
HIGH WYCOMBE HP14 4TH

TELEPHONE: 01494 564 600

M. R. COLLINS

GARDEN CONSTRUCTION

Est 1979

Driveway, Paving, Brickwork, Fencing
Groundworks, Excavations, Operated
digger hire.

We specialise in Block paving and all
types of slab laying Indian stone and
concrete offering a start to finish service
inclusive of excavations muck away,
supply and fix.

For estimate Phone: 01844 346360
Mobile: 07774 256732

Nick Higgins Forestry & Fencing Contractor

m. 07768 383418
t. 01494 488835

45 Great Hampden Seasoned logs
Bucks available
HP16 9RJ



Beautiful sunrise photo by Jeni Fairey

Fencing, Garden Machinery & Forestry Supplies
Briants
Of Risborough Ltd
www.briantsltd.co.uk 01844 343663 Thame Rd, Longwick, HP27 9DP

STIHL
HONDA
POWER EQUIPMENT
HAYTER
MAKERS OF THE TRUSTY MOWERS

**SUPPLIERS OF
FENCING MATERIALS,
GARDEN MACHINERY &
FORESTRY EQUIPMENT**

GREAT DEALS THIS WINTER
UP TO 50% OFF SELECTED LINES. PUBLIC, DIY & TRADE ALL WELCOME

You can now order online for local delivery
www.briantsltd.co.uk or call **01844 343663**

JOHN BISHOP Est. 1972 GARDEN MACHINERY

Sales & Service



HONDA
LAWN & GARDEN



Machine Hire

Scarifiers, Cultivators, Strimmers, Mowers
Hedge Trimmers

Blade/Chainsaw Sharpening & shear grinding.

We also stock a wide range of parts for various products.

Free Collection & Delivery



Tel No. **01494 563513**
Mob. **07917 106004**

1 Margaret Cottages, Northdean, High Wycombe, Bucks, HP14 4NH

Martin Holman's Pest Control & Services



Qualified & Fully Insured



NPTA

tomorrow's association
for today's technician



(M) 07510 290321 (T) 01296 622972

ratman01@talktalk.net



@MHPestControl

VILLAGE ENVIRONMENTAL SERVICES DOMESTIC DRAIN SERVICES

Proprietor: Dennis Cook
Est. 1979

BLOCKED DRAINS?

FAMILY RUN BUSINESS SINCE 1979

BLOCKED DRAINS CLEARED

REASONABLE RATES

CCTV DRAIN SURVEYS

NO EXTRA CHARGE FOR EVENING, WEEKEND OR BANK HOLIDAY CALLOUTS

FULL PUBLIC LIABILITY INSURANCE

CALL US DAY OR NIGHT

**24/7
CALLOUT
SERVICE**



07850 635 844 01296 624 221 (MESSAGES)



WHO'S WHO

North Dean Village Hall - Chair	Dick Pooley	01494 269615
North Dean Village Hall - Bookings	Jeremy Mudie	07880 785983
North Dean Village Fete	Dick Pooley	01494 269615
One Can Food Bank Trust - Chair	Graham Peart	01494 488327
Pigotts 7 '48' Musical Evenings	Jeremy Hamilton	07834 224589
Riding for the Disabled	Gloria Holmes	01494 488420
Speen Good Neighbours	Pat Richardson	01494 488627
Speen & North Dean Guides	Pauline Hall	01494 488372
Speen & North Dean News - Advertising	Tom Dent	01494 488943
Speen & North Dean News - Chair	Gloria Holmes	01494 488420
Speen & North Dean Toddlers	Sandy Mitcheson	07747 635974
Speen Baptist Church - Pastor	Rev. Tim Deller	01494 488753
Speen Environmental Action Group (SEAG)	Jane Farley	07889433630
Speen Festival	Cat Cook	01494 488939
Speen Fete - Chair	Clare Morris/Helen Davies	01494 488553
Speen Helping Hospices - Secretary	Maureen Laing	01494 488397
Speen Heritage Group - Chairman	Peter Symonds	01494 488016
Speen Marquee	Greg Cook	01494 488939
Speen Playing Fields - Chair <i>playingfields@speenbucks.org.uk</i>	Clare Morris	01494 488553
Speen C of E Infant School - Head	Jacquie Coles	01494 488321
Speen School PTA - Chair	Cat Cook	01494 488939
Speen Stores	Alison Templeman	01494 488258
Speen Tennis Court - Secretary	Philippa Lane	01494 488453
Speen Village Hall - Bookings	Sue Taylor	01494 488500
Speen Village Hall - Chairman	Bill Groves	01494 488180
Speen WI - Secretary	Jenny Pearce	01494 562333
St John's Parish Church	Rev'd Tony Bundock	01844 347741

LACEY GREEN PARISH COUNCIL

Councillors for Speen

Roger Craft
Philip Suter

r.craft@laceygreen-pc.org.uk
p.suter@laceygreen-pc.org.uk

HUGHENDEN PARISH COUNCIL

Councillors for North Dean

Andrew Capey
Mary Hilder
Peter Gieler
Simon Kearey

andrew.capey@hughendenpc.org.uk
mary.hilder@hughendenpc.org.uk
peter.gieler@hughendenpc.org.uk
Simon.kearey@hughendenpc.org.uk

BUCKINGHAMSHIRE COUNCIL

Councillors for Speen

Carl Etholen
Shade Adoh
Robert Carington
Steve Broadbent
David Carroll
Clive Harriss

Carl.Etholen@buckinghamshire.gov.uk
Shade.Adoh@buckinghamshire.gov.uk
Robert.Carington@buckinghamshire.gov.uk
Steve.Broadbent@buckinghamshire.gov.uk
David.Carroll@buckinghamshire.gov.uk
Clive.Harriss@buckinghamshire.gov.uk

Councillors for North Dean

BEECHDEAN

Farmhouse Dairy Ice Cream



Now available from
Hughenden Village Store and Coffee Shop

• 130ml Beechdean Farmhouse 'Spoon in Lid' Tubs •
Vanilla, Double Chocolate, Strawberry, Salted Caramel, Mint Choc Chip,
Honey & Ginger and Lemon Sorbet

Special Offers Available in-store!

- 1 Litre Beechdean Farmhouse Tubs •
- 2 Litre Beechdean Farmhouse Vanilla Tubs •

Hughenden Village Store and Coffee Shop
Coombe Lane, Hughenden Valley, High Wycombe HP14 4NX

 @HughendenValleyShop1



  
@BeechdeanGroup



Opening Hours: Monday to Friday : 7.30am – 6pm, Saturday : 8am – 4pm, Sunday : 8am – 3pm

A photograph of a garden path leading through a rose archway. The path is made of light-colored gravel and is bordered by a low, neatly trimmed green hedge on the left. The archway is made of dark metal and is covered with a dense growth of roses in various shades of red, pink, and white. The path leads towards a white building in the background, partially obscured by greenery. The overall scene is a well-maintained, elegant garden.

Homes of Distinction

If you are looking for a very special property or have one that would benefit from our award winning marketing then we are ready to act on your behalf.

01844 343131
Princes Risborough Office

01494 711677
Hazlemere Office

FINE & COUNTRY
fineandcountry.com™