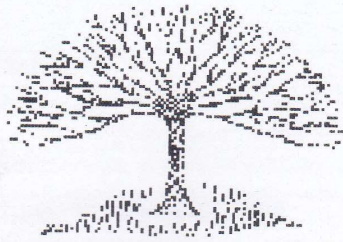


Speen and North Dean NEWS



Issue 38 Spring 2006



Villagers of all ages help to improve Speen playing field for the events of 2006

INSIDE—Ferret racing in North Dean!

**Now with
Lacey Green
and Loosley
Row events
and activities**



Your local Estate Agents

High Wycombe Office

*31 Crendon Street,
High Wycombe, Bucks.*

HP13 6LJ

Tel: 01494 451010

Hazlemere Office

*1-3 Penn Road,
Hazlemere, Bucks.*

HP15 7LN

Tel: 01494 711777

Prestwood Office

*2 Wycombe Road,
Prestwood, Bucks.*

HP16 0PW

Tel: 01494 868600

Residential Lettings

*1-3 Penn Road,
Hazlemere, Bucks.*

HP15 7LN

Tel: 01494 451050

Stokenchurch Office

*Kingston House,
Oxford Road, Stokenchurch,*

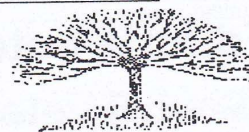
Bucks. HP14 3TA

Tel: 01494 484288

www.philipgreen.co.uk

***Professionals in the sale and rental of quality homes in
Speen, North Dean and the surrounding Chiltern Villages***

What's on in Speen and North Dean?



	March	
2nd	Woodland Archaeology Study Day by John Morris— contact Nick Wheeler Robinson— tel. 562167	Pigotts Wood
2nd	Rothschilds and Waddesdon, Susan Brooke —Speen WI	Speen Village Hall 7.45pm
7th	Speen Playingfields AGM	Speen Pavillion 8.00pm
9th	Pub Quiz	De Wanium, Speen 8.00pm
23rd	Pub Quiz	The Gate, Bryants Bottom 8.00pm
25th	Men's Breakfast	Speen Chapel Hall 8.30am
29th	North Dean Charity Lunch—contact Judy Keen	North Dean Village Hall
	April	
6th	Birthday Party—Speen WI	Speen Village Hall 7.45pm
6th	Pub Quiz	De Wanium, Speen 8.00pm
20th	Pub Quiz	The Gate, Bryants Bottom 8.00pm
	May	
4th	Resolutions discussion for AGM—Speen WI	Speen Village Hall 7.45pm
5th	Ladies Breakfast—Speen Supporters Group 488654	Hampden Village Hall 12.00noon
13th	Ladies Breakfast	Speen Chapel Hall 8.30am
18th	Speen and North Dean Golf Day	Mentmore GC
	June	
1st	Watercolour quickies with Sheila Ward—Speen WI	Speen Village Hall 7.45pm
17th	Los Suideros Mexican Band	Speen Playing Field Marquee TBA
18th	Speen Fun Day	Speen Playing Field TBA
24th	Speen School Ball	Speen School Marquee TBA
	July	
6th	Physiotherapy and exercises, Mrs Gummer—Speen WI	Speen Village Hall 7.45pm
8th	Speen Fete	Speen Playing Field TBA
29th	North Dean Fete	Village Playing Field TBA
	August	
3rd	Charles Dicken's Troubled Childhood, Colin Oakes— Speen WI	Speen Village Hall 7.45pm
	September	
7th	Artists of the Thames Valley, Brian Edwards—Speen WI	Speen Village Hall 7.45pm
9th	Speen Ball—Speen Supporters Group	Willotts Farm TBA
21st	Speen and North Dean Golf Day	Western Turville GC
	October	
5th	The story of perfumery and Grasse, Mark Davis—Speen WI	Speen Village Hall 7.45pm
	November	
2nd	Annual Meeting—Speen WI	Speen Village Hall 7.45pm
	December	
7th	Flower arranging, Linda Elliott—Speen WI	Speen Village Hall 7.45pm

Editor's note

Thank you to all our readers for your positive response to our request for feedback in the last issue. I'm pleased to say that the vast majority of comments were very favourable and in this issue I've introduced a few new features in response to specific requests. Please do keep giving us feedback. My contact details are below and our Committee members are listed on page 31.

Together with Norman Tyler, the Editor of Hallmark we've exchanged information about activities and coming events in each other's villages and you'll see opposite 'What's happening in Lacey Green and Loosley Row'. You may find some items of interest and I'll be pleased to hear your views. Norman has also included our coming events in the new issue of Hallmark.

A few people have commented that they know little about the activities of our Parish Councils or even what their responsibilities are, so in this issue you can be enlightened! Lynne Turner (p22) and Don White (p12) have written notes covering the activities of Hughenden PC (which includes North Dean) and Lacey Green PC (which includes Speen) respectively. On p27 we also have Paul Rogerson's usual informative page on the District and County Councils—so you can no longer say your not informed! Also new in this edition (p18) is a summary of the activities of St John's Church; Speen's Parish Church.

As usual I've received a very healthy flow of contributions and I had the 'good problem' of squeezing in as much as possible. Please keep it flowing!

Finally a special word of thanks to JNP who print this magazine for us at cost. Without this and the valuable advertising revenue we would have a much thinner and less attractive magazine.

Contributions to the Editor:

Stephen Peake, *Beeches, Hampden Road, Speen*: stephenpeake@btinternet.com. tel 01494 488293; mobile 07785 280055

Contributions should be in the form of electronic Word or jpg files wherever possible.

Contents

What's on in Speen & North Dean	3
What's on in Lacey Green & Loosley Row	4
Speen & North Dean Golf Days	6
Speen Pub Quiz	7
Speen Marquee	8
North Dean Village Meeting	8
Speen Playingfields News	9
Speen Scout Hut	10
Parish Council Notes—Speen	12
Wildlife Watch	13
What's new at Speen School	15
Letters to the Editor	16-17
News from St John's Church	18
Ferret Racing in North Dean	19
Speen WI report	19
Speen Stores update	20
Cynthia Maddern	20
Parish Council Notes—Hughenden	22
Christmas comes early for Speen Rotarian	23
Eighty years in Speen	25
Speen Supporters Group	26
Ladies night out!	26
District & County Council News	27
Down on the Farm	29
News from Speen Baptist Church	32
Who's who in Speen and North Dean	34

Final copy date for the next issue:

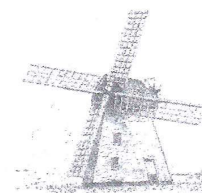
May 5th

Our aim is to distribute within 4 weeks

What's Happening in Lacey Green & Loosley Row ?

Residents of Speen and North Dean would be most welcome to join in any of these!

All events at Lacey Green & Loosley Row Millennium Hall unless otherwise specified



WHO	WHEN, WHERE if not in Millennium Hall, and OTHER DETAILS	CONTACT	01844 *
Happy Wanderers' Walking Club		Roger Brudenell	346893
- normal walk (5-6 miles)	10.30am. Starting place informed on previous walk		
- short walk (2-3 miles)	2nd Wed. 10.30am, Millennium Hall car park		
Horticultural Society	3rd Wed of Jan, Mar, May, Jul, Sep, Nov. 8pm	Terry Fendom	342636
Jingle Tots	Baby to 5 years. Songs, action rhymes, musical instruments, refreshments, playtime. Fridays during term time.	Jenny Stothard	344441
Kinder Gym	Pre-school Gym Classes. Fridays during term time	Jenny Stothard	344441
Lacey Green Productions	Dinner theatre	Val Brookhouse	344207
Lacey Green Windmill	Open Sundays and Bank Holiday Mondays 2.30-5.30pm beginning May – end Sep. See below	Michael Hardy	343560
Loosley Row & Lacey Green WI	2nd Thu, except Aug. 2pm	Jill Baker	275442
West Wycombe Decorative & Fine Arts Society	If you are interested in visual arts, phone for further information. Membership only. There is a waiting list.	Sheila Clay	291114
Windmill Under 5's Playgroup	Mon-Fri 9.15-11.45am, lunch club 11.45am-1.15pm	Ginnie Brudenell	346893
	At Sports & Social Club (next to St John's School).		
Windmill WI	1st Wed of month. 7.45pm	Karen Hodgton	275009
81st Over 60's Club	1st Tue of month. 2pm	Stella Boll	347268
		Carol Knight	343093

* Except where shown otherwise

LACEY GREEN WINDMILL is the oldest smock mill in the country and still has its original wooden machinery from the mid 17th century. Since 1971 it has been restored to working order by members of The Chiltern Society. Admission is £1 for adults and 50p for children. On Sunday 14th May we will hope to have the sails turning for National Mills Day. As always, this will depend on suitable weather. For any further details please contact Michael Hardy on 01844 343560.

Loosley Row & Lacey Green Horticultural Society welcomes members from outside our two villages. The annual membership fee is £2 and we have an excellent talk on the third Wednesday every other month, starting in January, in the Village Hall at 8pm, for which there is no charge. In 2005 we had talks on Bees, growing and exhibiting sweet peas, and Victorian farming, all with "live" exhibits, and on plant collecting in the Himalaya and South America, both beautifully illustrated with slides. Sometimes we lay on refreshments appropriate to the subject. We have an annual vegetable, flower and domestic produce show and the occasional local garden visit and plant stall. If you are interested in gardening and things "rural" come and join us. It beats watching TV!. Contact Terry Fendom on 01844 342636 or John Langlois on 01844 274977.

Golfers book your diaries now!

Speen and North Dean Golf Days

The dates and venues for both the Spring and Autumn matches have now been finalized.

The Spring competition for the PK trophy will take place on Thursday 1st May 2006 at the Mentmore Golf Club, details will be circulated nearer the time; any new players please contact Bill Groves or John Rogers.

The Autumn match will be played for a new trophy at Western Turville Golf Club on Thursday 21st September 2006.

This Autumn match will be the tenth anniversary of golf competitions between North Dean and Speen and we will be running extra competitions including a yellow ball, nearest the pin, magic two's and a putting competition. Any other suggestions will be welcome.

We have a voucher for a round of golf for four people, worth up to £120, donated by Western Turville Golf Club, this will be put into a draw to take place at a suitable time during the summer, if you wish to enter please put a £5 note into a sealed envelope marked Golf Day and put your name in the bottom corner of the envelope. Anyone can enter—please hand the envelopes to either Bill or John. We would welcome any more sponsors for prizes.

North Dean Village Hall have agreed to run a fund raising event for us and we are hoping to run one in Speen. Please try to attend the dates will be circulated when known.

Because of the extra work in organizing this event we would welcome help prior to the event and on the day itself. Please let us know if you are willing to help.

Please contact- Bill Groves 01494 488180
John Rogers 01494- 562041

Hughenden Builders

Established 22 years

All Building Works Undertaken

- ◆ Extensions.
- ◆ Alterations.
- ◆ Loft Conversions.
- ◆ Roofing – all types.
- ◆ Drives, Block paving, Tarmac etc.
- ◆ Patios, Walls, Garden landscaping.
- ◆ Plumbing, Plastering, Carpentry.

Planning Service.

Clear & Concise Plans

Single Story £150.00

Two Storey £300.00

(plus council fees)

Free detailed estimate with drawing.

Planning fees returned if tender accepted.

171 Main Road
Naphill

Tel: 01494 562937
01494 438057

Mean machine



Hard water can ruin appliances – avoid damage in your home by installing an Ecowater softener. Available from Sterling Softeners, the Ecowater range of intelligent products provides a continuous supply of soft water with the minimum amount of fuss.

To request a free brochure and to find out how you can begin to enjoy the benefits of softened water in your home, call us on freephone 0800 515 377 or visit www.sterlingsofteners.co.uk



Intelligent solutions to hard
water problems available from

Sterling Softeners
WATER TREATMENT SPECIALISTS

Speen Quiz raises over £2500



Geoff and Clare—over 4500 original questions!

After four years of running the fortnightly Speen pub quiz, Geoff and Clare Smith have finally decided to hang up their clipboards. *(Although the quiz is still continuing - see below.)* The couple have put a marvellous effort into giving a lot of people a lot of fun and what's more, through the quiz, have raised over £2652.70 for the Speen Supporters Group Charity in aid of local hospices. (The entry fee has always been exactly £1 and Clare says the odd 70p was found on the floor one night. However, if you think it was yours please don't bother to claim it.) They reckon to have compiled at least

65 separate quizzes - and at around 70 questions per quiz you can imagine the work required to find over 4500 original questions!

The quizzes started in the William IV and in the early days Geoff and Clare recall as many as 27 people being crammed into the small bar to the left of the main entrance. Over the years the quiz moved into the main room and then down to the Gate at Bryants Bottom, where a number of residents were already quiz regulars. Normal attendances have probably averaged about 25-30, but have been as low as 9 and as high as 80+ (a Christmas Quiz in Speen Village Hall). The regular quiz is always on a Thursday evening, but there have been 3 special Christmas Quizzes and last year there was a Speen Festival Quiz.

Geoff and Clare are now taking a well-earned break from compiling quizzes and leaving it to others to continue. John Radford has led the move to keep the quiz going and several people have volunteered to

prepare an evening's questions. The quiz is now alternating between the William (sorry, De Wanium) and the Gate. Everyone is welcome (you don't need to come with a team, you can just join up with other competitors on the evening) and the object is to enjoy yourself - no-one takes it too seriously. So give it a try; it's a good night out and some people like to have supper in the pub before the quiz starts at about 8.00pm.

Forthcoming dates and venues are: 9th March De Wanium, 23rd March The Gate, 6th April De Wanium, 20th April The Gate.

Martin Stockley

London Bridges Walk - 25th June 2006

Help raise kidney awareness and organ donation by walking eight of the London Bridges on Sunday 25th June 2006.

The Bridges Walk starts and finishes at the Tate Gallery on the south side of Tower Bridge and walkers will snake across the eight bridges, including Tower Bridge, London Bridge, Southwark Bridge, Millennium Bridge and Blackfriars Bridge.

Registration fee is £7.50 per walker, there is no minimum sponsorship but walkers are encouraged to raise as much sponsorship as they can. Proceeds will be used to further the work of Kidney Research UK and help improve the lives of people living with kidney disease.

For more information or to take part in the London Bridges Walk please call Kidney Research UK on 08456 121226 or visit www.kidneyresearchuk.org

Supplied by Hughenden Parish Council

Speen Millennium Marquee

Notes of Annual General Meeting of Management Team on 17th January 2006.

Present: Roger Anderson (Treasurer), Ashley Cooper, Trevor Dunnington, James Entwisle, John Holmes (Chair), Rob Lenko, Jeremy Symondson.

1. Financial situation: Income for the 2005 season was £1420 and expenditure £655, producing a surplus of £765. The balance on deposit is now £5350. The Marquee will probably need replacing after three more seasons so a surplus of about £1000 pa is needed to produce most of the likely cost of £8-10k.

2. Hirings for 2006: Four hirings are for village

organisations and one private, with a projected gross income of about £1800. It was agreed that one more (private) hiring could be re-sourced. Prices will be £300 for village organisations and £500 for private villagers.

3. Elections: John Holmes agreed to continue as Chairman for 2006. Roger Anderson agreed to continue as Treasurer.

4. Other matters: The fast-rising cost of insurance was discussed. Public Liability cover cost £62 in 2005. Cover for fire and damage cost £320 and, although these latter risks are small, it was agreed that we should continue to take out insurance unless the premium for 2006 increased significantly.

John Holmes

North Dean Village Meeting

On 13th January a Village meeting was organised to present North Dean Village Hall Committee's plans for the coming year. All the inhabitants of North Dean were individually invited to join the committee (literally) and discuss the re-structuring of the various committees. The main aim of the evening was to present each of the committees and encourage more people to get involved.

An excellent turnout filled the village hall and the evening started with the introduction of our local policeman PC Turnham. It's reassuring to know we have a dedicated policeman.

Doug Wilson then presented the financials and each of the committees was introduced:

- Development – supporting the structural aspects and how the village looks
- Social – provide a non fund raising program of villager focused events
- Catering Team – support the other committees
- Fund Raising – provide fund raising events to cover all costs

The main message delivered was that joining a committee is not a jail sentence or a period of community service given out by a malicious judge. It's the chance to put ideas across and then deliver both your own and other people's ideas back to the village. The time commitment can be from full time committee member to someone who helps at one event (many hands really do make light work). The other message was that not all events are going to be run purely to grab as much money as possible

from the unsuspecting attendees. A clearly defined line has been drawn, some events will be just social (Christmas Carols etc) and the rest will be unashamedly to raise cash (Ferret racing mega successful). Fund raising is needed for the basic costs of the hall and village, but we also need to fund ideas and plans raised and agreed by the villagers (time to get your ideas to the relevant committee).

With the majority of people signing up (PC Turnham on the exit door with hand cuffs and riot baton to hand was a great motivation!) the existing and long-serving committees are now going to meet to agree a plan for the coming year. These plans will be presented to the village at the AGM in April.

If you could not make it to the meeting, and don't want to miss out then please contact any committee member. There is always room for news ideas and willing hands.

Thanks to everyone who put the evening together; we all look forward to working together to keep North Dean the unique village it has always been.

Andrew Howard

WANTED

More articles from North Dean for this magazine

**We'd especially like your photos of the great events which we hear about.
NOTE: close-ups work best.**

Speen Playingfields News



A willing army of helpers spread fresh bark around the play area

Ridgley's field

Planning Permission has been obtained to change the field to recreational use and to use part for a children's mountain bike circuit. Peter Symonds is leading a project team which is planning the construction and funding of the cycle track.

Bonfire night

We were very lucky with the weather. A bumper turnout of villagers and friends enjoyed a huge bonfire and a splendid fireworks display let off by Keith



Lighting of the tree and carol singing was led by Martin Stockley

Jones. They also enjoyed hotdogs and mulled wine and so added £1500 to the funds.

A big thank you to the mums, dads and children who helped build the bonfire in the morning and do a number of other jobs on the field and play equipment.

Village Christmas tree

Another cold, dry evening for the lighting of the tree and carol singing led by Martin Stockley and choir, together with mulled wine and WI mince pies. £156 was collected for the Bucks Autism charity.

Future playing field's events

FunDay is planned for Sunday 18th June, with another musical event in the marquee on the Saturday evening. Jeremy and team are on the case!

Working parties will be arranged in April to carry out more improvements to the play equipment and to start the construction of the cycle track. Another opportunity for some villager bonding!

The cricket net was well used last summer. We are hoping to restart some occasional cricket on the field for teenagers. We shall need some parents to help with this.

AGM

The Speen Playing Fields AGM is on Tuesday 7th March at 8.00 pm in the Pavilion. All villagers are very welcome to attend.

John Holmes.

Editors note:

A vast army of adults and children gathered to help with improvements and bonfire building at John Holmes' last working party in November. It was a great impromptu event which was enjoyed by everyone and resulted, painlessly, in some significant improvements to the Speen Playingfield. John commented that in his early years it was a major task to persuade villagers to turn up for these working parties and for marquee erection, but now 'its easy' as people are keen to come along and get involved in some enjoyable team work with refreshments and fun for all. Well done John on persevering and making this important task seem easy!

The Speen Scout Hut

Everyone who passes through Speen on their way to or from North Dean sees the Scout Hut on their journey. (It's that wooden building just opposite and down from the Baptist Chapel). Some of you may know it more than others because the Guides meet there every week - but there are no Scouts. This is a sad tale of busy lives, but the truth is that there are very few younger people who are willing and able to volunteer to run a Scout Troop, or even Beaver Scouts or Cub Scouts. If you think that Scouting belongs to some dim and distant past, then log on to www.scoutbase.org.uk and surprise yourself. It takes a talented and energetic person to manage such a challenge.

In the meantime, until Scouts return full time to Speen, the Scout Movement has designated the Speen Scout Hut as a 'Regional Resource' and has appointed some local trustees to look after the Scout Hut and its woodland. You will often see parties of people down there at a weekend. More often these groups of people will be Scouts camping out as part of their Duke of Edinburgh awards, or other outdoor activities.

Keeping the Speen Scout Hut and surrounding woodlands in good shape takes time, effort, and a bit of money. The hut itself was built by the voluntary endeavours of many villagers. The trustees are keeping it well maintained so that it can be used by the villagers when it is needed again for local Scouting.

If you want to find out if the Scout Hut can be made available for other functions, you should contact Pauline Hall (488372). A donation and contribution to the maintenance is expected of £15 for use in an evening, £25 for a day (or 24 hour period) and £40 for longer use over a weekend. Campsite facilities - including a traditional campfire and totem pole! - are also available to groups of people.

John Radford

ELECTRICIAN REQUIRED

A committee of Speen School parents are arranging the annual fundraising ball on Saturday 24th June

Would you be willing to give some of your time to assist with the setting up of the lighting and electrics?

We would really appreciate your help.

Please contact Katherine Matthews on 01494 489843

Geoff Smalley

INTERIOR DECORATING

Telephone 01494 562503

Oak End • Clappins Lane • Walter's Ash
High Wycombe • Bucks • HP14 4SL

TREATS II

A Tradition of Good Toys!



TREATS II

5-7 Duke Street
Princes Risborough
Bucks. HP27 0AT
Tel: 01844 344354
Fax: 01844 274540

TREATS II

the greatest selection
of toys in the area!
Scientific & Educational

BEECHDEAN

Farmhouse Dairy Ice Cream



**Come to the farm and view
our range of delicious
farmhouse products
You will be amazed
at the selection.**

**available from
Beechdean Dairies,
Old House Farm, North Dean.
Open normal office hours
Monday to Friday**

**Tel : 01494 563980
www.beechdean.co.uk**

Parish Council Notes— Speen

Lacey Green Parish Council is divided into two Wards; one representing Lacey Green and Loosley Row and the other representing Speen. The Lacey Green Ward has five Councilors and the Speen Ward has two, namely myself and Roger Craft. The Speen Ward covers the whole village from Highwood Bottom across to Coleheath Bottom, past Speen Chapel and including all the houses as far as Flowers Bottom. To be accurate, Beechwood Farm, College Wood and the Scout Hut are in the neighboring Parish of Great and Little Hampden.

The Parish Council is financed by an annual Precept which forms part of the Council Tax. For the third year running, the Parish Council has lowered the Precept which for any Local Authority these days is quite a rarity.

During the last year we were able to provide grants for general maintenance to the Village Hall and Speen Playing Field including providing the Christmas Tree; we also provided the new surfacing for the playground and a grant towards the production costs of the Wind In The Willows. British Telecom have informed us that the public telephone box opposite the Shop is uneconomical and liable to be made redundant. Its use over recent years has fallen considerably. The Parish Council felt that we should make an effort to retain the box for the present and BT agreed to do this provided it was converted to be card operated.

The bus service to the village has again been reduced. The Council complained that little pub-

licity was given and it was found that the operators only have to give the County Council six weeks

notice for major alterations to the timetable. The new timetable is on the bus shelter, the last bus no longer runs and the buses during the day only run Tuesdays and Fridays. There is now no Saturday service. It looks very much as if our service has become virtually a school bus.

We learn that our postal deliveries are shortly subject to a major change. At present, the village is served by two postmen; the new arrangement will be that the whole village will be served by one postman. Complaints have been made during the last year or so regarding very late deliveries in some parts of the village whereas other parts of the village receive their mail reasonably early. Hopefully the new arrangements should even this out.

For many years, the Parish Council have been asking Bucks County Council to extend the speed limit along Hampden Road by some 500 yards past Coleheath Bottom and we understand that this would be in place during this year, together with certain alterations down through North Dean.

The Parish Council meets once a month, one meeting in Lacey Green and one in Speen. Once a year, the Annual Assembly of the Parish Meeting is held, which is open to all residents on the Electoral Roll. Unlike an ordinary Parish Council meeting, it is a general meeting in which everyone can take part. Any subject concerning the Parish can be raised and discussed. The Parish Meeting for 2006 is being held in Speen Village Hall at 8.30pm on Tuesday 7 March.

Don White

Speen Festival—help wanted

The final analysis of last year's Festival revealed that the event just exceeded break even financially, thanks to the generosity of sponsors JNP, Lacey Green Parish Council, Philip Green & Partners, Speen Shop Charities Fund, Woodside Secretarial and Wycombe District Council. A reserve remains in the bank to be carried forward to help fund/underwrite the next Festival, which is due to take place in September 2007.

Many villagers kindly contributed their time in all sorts of ways to help to run the Festival, but the organisers would now be pleased to hear from people who would like to play a larger part in 2007 in terms of the organisation of events and/or the management of the Festival generally.

The first 3 Festivals (2001, 2003 and 2005) have been very successful community events for Speen. If you want to see this continue and are prepared to do something about it, please contact Martin & Marjorie Stockley on 488101.

Wildlife Watch

By Peter Symonds

The most interesting records to reach me during the past few months relate to sightings of Ravens on two occasions during January. Regular readers of this article may recall that a pair of Ravens were recorded one mile north of Speen in early 2005. At that stage I mentioned that a pair had nested further along the Chilterns near the Bedfordshire county boundary and that we might expect further sightings. Dick Seekins has now had two further local sightings, firstly near Denner Hill on 2nd January and then in Speen on 4th January with a Raven flying low over Flowers Bottom. In addition they have also been recorded in a garden in Prestwood.

These sightings are in fact part of a national resurgence of Ravens, which were once severely persecuted, gradually returning to the lowlands. Look out for a heavily built giant crow scavenging for carrion or listen for their distinctive call – a deep gruff “korpp, korpp”.

The other report of potential interest is a description of a nocturnal sighting close to the Pink

and Lily. Whilst not constituting a definite record, the animal in the car headlights evidently resembled a Polecat. Since finding one at Saunderton some years ago no positive local records have been reported. Two were found dead near Amersham in 2003 as a result of road accidents so the indications are that they remain present in the region.

Winter birds appeared in the village in November with George Butler having both Siskins and Bramblings feeding in his garden. Fieldfares and Blackbirds in large numbers have been feeding as usual in the orchard in Grubbins Lane, whilst Redwings are present in local woods in large numbers. Also present are small flocks of Bullfinches feeding on the remnants of berries left in brambles and undergrowth. Jeremy Symondson reported a Woodcock in Flowers Bottom and this again is likely to have been a foreign visitor rather than a local bird. On 29th January as well as a Buzzard I noted about 20 Lapwings feeding in the fields between Grubbins Lane and Monkton Wood. I have no record of having seen Lapwings in Speen before.

Please let me know of any further interesting sightings. (Tel 488016 or Symonds@speen10.freeserve.co.uk).

Fred Burnham's Decor

High Class Interior & Exterior Decorating

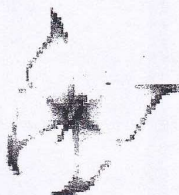
Free Advice given on Home Maintenance

Free Estimates

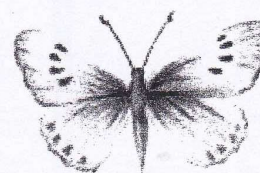
Sensible Prices and No VAT

Friendly Local Service

No Job Too Small



**Call Fred on
01494 488303**



A Member of The Guild of Master Craftsmen



North Dean Furniture Restoration

Workshop: 01494 563860 (Day Time)

Mobile: 07770 747470



**The complete restoration service for antique,
reproduction or modern furniture.**

**French Polishing, Damage Repair, Re-Carving
Re-Veneering, Upholstery, Marquetry**



**Upper North Dean Farm, North Dean
High Wycombe, Bucks. HP14 4NJ**

Amanda Cleaver

Letters to the Editor

AFTER THE FIREWORKS

I'm not a fan of fireworks, especially when firework night extends into "firework fortnight" but this year I really enjoyed the benefits of the evening that took place in the Playing Fields opposite my house. (Benefits not of the fireworks but the refreshments!!) Early the following morning I witnessed a Red Kite landing in the Playing Field, which I assumed was picking up food dropped by people in the excitement of watching the fireworks. Again on Monday a Kite spent most of the morning drifting over the field and landing to pick up various tasty morsels. I know they don't like people to feed the Kites as their normal diet I believe is worms and carrion, not cooked food, but how lucky we are to be able to see something like this right on our doorstep.

George Butler.

A prank or vandalism?

We are very fortunate in our community to have minimal disturbance caused by vandalism of street signs and public notices or indiscriminate dumping; sweet wrappers and drink cans being discarded around the streets. I am sure this is due to the values held by parents, children and other folk comprising our community. It is also admirable that there are some residents who make a point of picking up the odd piece of rubbish as they walk around the village. We survive in an environment comprising our homes, buildings and businesses which need support for our community to evolve School, Chapel, Village Hall, Playing Field, Village Shop and Pub for example. To my surprise, I see the notices on the gate at the De Wanium have been tampered with. Some may object to the fact that the De Wanium has to advertise its wares by such a notice. Some may consider that this is just a prank to relieve the monotony of the dark winter nights.

A prank to one person is a hurt to another. It is also important to me that the King William or De Wanium, continues to flourish and contribute to the environment of the community. What is a prank one day can spread into vandalism so easily.

Yours faithfully,
Eric Baines

London to Dublin—by bike!

My daughter Emma and I are currently in training for a sponsored cycle ride for the National Society for Epilepsy (NSE) from London to Dublin. We will set off on June 7 covering an average distance of 80 miles a day. As many of you know Emma and I both work for NSE. Epilepsy is the UK's most common serious neurological condition affecting 1 in 130 people. It can affect anyone of any age. NSE leads the world in medical research – and all the money we raise will go to help fund that research. If you would like to sponsor us you can do so via <http://www.justgiving.com/cleavercycle> There will also be corporate sponsorship opportunities on the team's T shirts or on the support vehicle – anyone interested please give me a call (488288) or email Amanda.cleaver@epilepsynse.org.uk. We are also hoping to hold a village family cycle treasure hunt – keep an eye on the notice boards for more details! Thanks to everyone who reads this in anticipation of your support.

Amanda and Emma Cleaver

Remembering Alice – Amongst other things

I had a birthday recently and what a pleasure it was to receive a nice pile of **hand-written** envelopes, several of which contained hand-written letters as well as cards. Is there anyone else who finds all those impersonal mass-produced piles of mail, with printed addresses, depressing and unnecessarily prolific? Years ago, I taught my class how to write a decent hand, according to Marion Richardson – and what pleasure many of them took in comparing their efforts and hoping that I might display their work on Open Day. I confess that one or two left handers were less easy to deal with but I do remember Alice of all the others, who was actually the youngest member of the class at that stage. 'Mrs Cottrell', she said, appearing at my elbow. 'Why have you given me a grade B when there are no mistakes in my work?' 'Alice', I replied 'when you can produce a neat piece of writing, without blots or smudges or crossings-out, then I will definitely give you an A.' (Not an A* note!). And to do her credit, that is exactly what she determined to do – and she achieved her aim wonderfully. I understand that she has done **rather** well in the years since then!

Leonora Cottrell

Letters to the Editor

Pigotts, a footnote:

During further research on the Sydenham 'mansion' taken down at Pigotts in 1761-2 I have found a record of the fire insurance taken out in 1726 with the Sun (the oldest insurance company). It is an early record in the second decade of the history of fire insurance, and tells us a little about the house (insured for £680, and its contents for £150) and the outbuildings (two barns, three stables and a barn/coach house – about £100 each and contents £50). All were tiled (thatch was a much greater risk) – roofs were vital on the Chiltern hilltops for the collection of rainwater in large underground brick 'tanks'. (That was still Pigotts only water supply in the early 1960's). The premium in 1726 was 32 shillings and a 1737 amendment records the death of Mr Sydenham and the continuation of the cover for his heir Richard Warre (described in Sydenham's will as 'belonging to the Sun Fire Office').

Nick Wheeler-Robinson

The Sportsmans Arms' ~ North Dean

I would like to hear from anyone who may have stories to tell about their memories of drinking at the 'Sportsmans Arms' in North Dean or if you knew anyone who did. Over the years we have met many people who have mentioned their visits to the old pub and I am keen to compile a short history of interesting stories. At present I have under construction a web site for this and one also linked to a web site for our village. For the time being if anyone would like to contact me either by email or telephone then I would be really pleased to hear from them.

"The Sportsmans Arms" was the only pub in North Dean. It was given a licence as a beer shop in 1852. In 1897 John Hatt took over and was granted a 6-day licence. He remained the landlord until the "Sportsman" was closed in 1956. The pub was very small with only enough room for 6 or 7 visitors in the parlour and 8 in the tap room and it had a reputation for being "a very friendly, family place". During the Second War it was the Battalion HQ Mess for the 4th Bucks Battalion, Home Guard, with good well cooked food being provided by Alice Smith. It was also the alternative

Battle HQ for the Battalion because it had one of the very few telephones in the village.

Sarah Booth 564291
sarah@slb1.demon.co.uk

Open house at the Magistrates Court

It's 'open house' at the Magistrates Court in High Wycombe on Saturday 22nd April from 10 'till 4. Demonstration courts will be in action all day and YOU can join Magistrates on the Bench and sentence some of the defendants! Refreshments will be available all day—so come and see how justice is done and join the fun. There are many exhibits to see whilst you're there. There is full disabled access and all ages are welcome!

Rob Lenko
roblenk@aol.com

Clifford Bax—information wanted

Does anyone in Speen have knowledge of the poet and playwright Clifford Bax, who lived in Speen in the 1930s? His more famous brother Sir Arnold Bax, the composer, often visited and wrote his tone poem 'November Woods' after walking in the local woods. Clifford wrote some charming poems about cricket, which he loved, and several plays which seem to have been successful in the West End. I imagine his name appears on the title deeds of one of the older houses in Speen.

Nick Wheeler-Robinson



Richard Ferguson

BUILDER

Established 30 years

FOR... Internal and external alterations

ALSO... Kitchen units fitted, bathroom suites, showers, etc.
Wall and floor tiling, decorating.
Electrical work, patios, porches

AND... All general building work

Telephone 01494 562954 or 07958 984363

NEWS FROM ST JOHN'S CHURCH LACEY GREEN

(Rector – The Reverend Denise Critchell)

Serving the village communities of Lacey Green, Loosley Row and Speen

Dear All

I am delighted to be writing to you all in Speen and North Dean and take this opportunity to welcome you to St John the Evangelist church at Lacey Green. It has been quite some time since news from St John's has appeared in SNDN but I hope this will now continue. As space is limited I have set out below some of the news and events planned for this spring.

Easter tide is of course a busy time in the church calendar and full details of all the services are also listed in 'Hallmark' and 'Viewpoint' magazines and on the notice board outside the church, so at the time of going to press we start with:

PANCAKE PARTY – Monday 27th February at St John's school hall, starting at 6.30pm everyone welcome.

ASH WEDNESDAY – 1st March, a Holy Communion service at 8.00am

LENT COURSES – We are running two study group courses this year, an afternoon and an evening group. Please contact Denise for further details on 01844 347741.

PALM SUNDAY – 9th April A special Holy Communion service. The APCC meeting will follow this.

MAUNDAY THURSDAY – 13th April at 8.00pm a special Devotional service will be held.

GOOD FRIDAY – 14th April An Easter Family service at 10.00am followed by an Easter egg hunt at the vicarage. Also we are holding an Easter Meditation Hour from 2.00pm until 3.00pm with Easter hymns.

EASTER DAY – 16th April 8.00am and 10.00am Holy Communion services and a 6.00pm Choral Evensong.

The Team Confirmation with Bishop Allan at St John's will be held on Monday 19th June this year, please contact Denise for further details.

Another Alpha Course will be starting in Lacey Green after Easter. Please come and join us for discussion and debate about the Christian faith, questions of Life and the relevance of faith today. Further details on the notice board soon or contact Denise.

The Youth Group run at Collins Farm is held every first Friday evening of the month starting at 7pm and is aimed at 11yr olds and above. It provides an evening of learning through bible readings, and also fun, games and refreshments! For further details please contact Lizzie or Hugh on 01844 342173.

The Toddler Praise group meet at St John's church every Tuesday afternoon at 2.00pm for about an hour during term time. The children are encouraged to listen to a short Bible story, and participate in prayers and songs. Afterwards they join in an activity related to the story and then enjoy refreshments with the grown ups. Children from birth to school age and their grown ups are all welcome!

The Home Groups and the Prayer meeting group are still going strong, providing learning, encouragement, support and friendship in comfortable surroundings. If you are interested in joining a group please contact Denise on the number above.

Regular Services

The times and format of weekly services at St John's are listed below:

SUNDAY

8.00am	Holy Communion (1662)	1 st , 2 nd & 4 th Sunday
10.30am	All Age Family Eucharist	1 st Sunday of the month
10.00am	Parish Communion	2 nd , 3 rd 4 th (& 5 th) Sundays
11.30am	Family Worship	3 rd Sunday of the month
6.00pm	Choral Evensong	1 st Sunday of the month

TUESDAY

9.30am	Communion Service in the Lady Chapel at St John's
2.00pm	Toddler Praise – each Tuesday afternoon during term time

WEDNESDAY

10.30am	Group Communion Service at St Mary's Church, Princes Risborough
1 st and 3 rd Sundays	Family orientated service, for all ages, everyone welcome.
Sunday School	2 nd , 4 th and 5 th Sundays, held in the Upper Room at the church, for children aged 4 years and above, held during the regular services. For more details contact Jenny King on 01844 343910

We look forward to meeting you at our lovely church -you are always welcome, so do come and join us.
Andrea Bennett ☎ 01844 274550



North Dean's Ferret Racing Evening

On Saturday evening January 21st, 70 locals from North Dean and some from the mountain region of Speen gathered for North Dean's first ever Ferret Racing evening in the village hall.

The evening started with the arrival of the President of the Royal Ferret Racing Board, SIR IVOR CHASE. He was accompanied by LORD BURROW, Chairman of the Committee to make Ferret Racing an Olympic sport in 2012.

After the ferret introductions, frantic betting was in place as the Ferrets were started in the first race - much to everyone's surprise a ferret won. 4 further races took place and excitement mounted.

A break for supper and socialising took place and a specially prepared meal of local Cow Pat soup, followed by Badger Pie was enjoyed by all.

After supper some guests contravened the recent EU Directive and partook of the old English sport of Ferret Legging. A sport which evolved from Poachers in Bucks, in which men who were naked beneath their trousers would see how long they could keep a live ferret down their pants. The audience was amazed that some of the Speen guests had the balls for this, and following a number of nips and bites the organ-

isers telephoned Hughenden surgery, as several players needed treatment. Unfortunately the phones were engaged for 3 hours but were eventually answered by a lovely receptionist and we asked if we could bring down some Speen people for hormone replacement for squeaking, high voices, but were told they were unable to be treated as the doctors' had already achieved the Government's target for ferret bite surgery that day.

After reminding the participants that the event was sanctioned in terms of the Ferret Racing and Gambling Act 2004, which states that the organisers could ferret out anyone not gambling to swell the much needed funds for the Village Hall, furious racing and betting continued well into the night.

The final race sponsor was auctioned to the highest bidder and won by a wealthy Chartered Surveyor living in Speen. Yes, we know there are many rich people in Speen but we poor people in North Dean welcomed their money and attendance.

The next day the Social and Fund Raising Committee added up all the evening's donations:

£1,614.79 profit

A real ferret result - many thanks. This money will go a long way in helping North Dean to continue being a lovely place to live in.

Fred Erret
(alias Rhynie and Peter)



Speen WI Report

Further to our last report, the Annual Meeting with pot luck supper, went off well. The Idle Woman should have been Women, as Mr. Runnels Davis told us, with slides, about young women being enlisted to work on the canal barges during the war, as the men had all gone to fight, and they proved to be jolly good at it too. In January Rachel Wheeler-Robinson gave an excellent talk on music therapy with brain damaged children and adults, even helping people with nervous breakdowns. Also in January, a group of us, with various friends, enjoyed an evening out at Dewanium's. Very nice! We

also had a craft workshop one Saturday, making green-willow baskets and garden climbing-plant stands. We were all very pleased with ourselves! We expect to have another session in February. We will have to report on the Red Kites next time, as our meeting is the day after this report has to be in. Our next three meetings will be 2nd March - The Rothschilds and Waddesdon with Susan Brook, our Birthday Party on the 6th April with soprano Glenys Groves and Resolutions on 4th May. If you want more information on the W.I. try the website www.bucksfwi.org.uk/speen.

Barbara Collett

Speen Stores Update

By the time you read this update there will have been further developments, but because Speen Stores is such an important part of community life an update is necessary - a 'snapshot' at this point in time.

As you may have read in the previous edition of Speen and North Dean News, Sandra and Peter Clarke are, sadly, planning to retire from running our 'really useful little shop' at the end of March because of ill health.

Initially not very many parties expressed an interest in taking on Speen Stores but lately things have been looking up. Sandra and Peter have received a number of expressions of interest which are being explored in more detail. It is hoped that there will be a successful outcome to these discussions and that the Buckinghamshire Housing Association will be able to share some good news with the community as soon as possible.

Meanwhile do not forget that the Speen Shop Charity is still active in disbursing the

rent paid for the shop premises to support worthy village causes. Applications are considered from any individual or community group provided the purpose is for a worthy, non-commercial cause (educational, medical or social) and benefits a resident of Speen or its community. So if you have an idea or project that will benefit all, or a section, of the community, then please complete an application form (to be found in Speen Stores) or contact any member of the committee.

Speen Shop Charity Committee members are:

Judi Booth	
Tim Crossley	01494 488269
Jane Fleming/Rosemary Pickworth (Bucks Housing Association)	01494 532808
Andy Gower – Chairman	01494 488758
Peter King	01494 488189
Jill Rogerson	01494 488315
Don White	01494 488437

Andy Gower

Cynthia May Maddern 1926—2006

Cynthia Maddern, known to everyone as Cynth, was born at Ashton, Studridge Lane, Speen. An only child, she attended Speen School before moving on to various other schools and colleges. Cynth married her husband, Hughie, when she was 16 eventually returning to live with him in Speen. They had four children of whom Robin still lives in Speen. Cynth enjoyed travelling and camping and her home was full of the many souvenirs she brought back from her trips both in England and abroad. Since Hughie's death in 1992 Cynth lived more quietly but his death did nothing to diminish her spirit. She didn't like to rely on others for help and the loss of her driving licence following a minor stroke was a great disappointment to

her. Cynth's love of flowers showed in her garden where, helped by Robin, she could be seen working and sometimes and just sitting enjoying the fruits of their labours. In later years Cynth's health deteriorated but she remained cheerful and always looked forward to the many visits from family and friends. Cynth's death on 12th January will leave a sad gap in the village where she had lived for over 50 years. She was laid to rest in the Speen cemetery near her husband. Cynth leaves Anthony (Anth), Maureen, Babs, and Robin (Rob) as well as 6 grandchildren and great grandchildren.

Jo Banks

'If I can put one touch of a rosy sunset into the life of any man or woman, I shall feel that I have worked with God' – Henry David Thoreau

It's so easy to let daily chores and struggles overwhelm us. No matter our age or situation, there are times in our lives when we need support, whether a parent with young children, recovering from illness, or just entering our 'golden' years.

That's why we try to help people put a 'rosy touch of sunset' into their lives. Carewatch is a home help, care service with one simple, but very big difference. We care.

At Carewatch we provide all sorts of services to a wide range of individuals in the community; assisting with any personal needs (such as washing, bathing, toileting), domestic care needs (shopping, cooking, cleaning), help with childcare, relief care for regular carers. Or just simply companionship.

If you're looking for some help, Carewatch is what you're looking for. We really do care.

Call Caroline on 01296 625385 for a private, personal discussion of your needs.

Carewatch (Mid Bucks)

Tel: 01296 625385

Email: ccsmidbucks@hotmail.com



Nicki Thomas Web Design

Quality bespoke websites for a wide range of businesses

Visit www.nickithomas.co.uk on the Web to find out more...

Hedgerows, Studridge Lane
Speen
Princes Risborough HP27 0SA

Tel 01494 488665
Fax 0870 1623908

Hughenden Parish Council Notes

Every now and again, the Council ask me to send information about something important that is happening within the Parish. This time, in response to questions that have been put to the Council over the last few months, I have been asked to base my article on how the Parish Council, and its Committees, works.

Hughenden Parish Council is made up of fifteen Councillors and is divided into four 'wards'. Great Kingshill ward includes the part of Kingshill that is in Wycombe District as well as Cryers Hill and has three representatives, Rick Gould (Chairman), David Davies and David Jarman. The other three wards each have four representatives: Naphill, including Walters Ash – Ian Bond, Peggy Ewart, John Harris and Matt Piercy; Hughenden Valley, including Bryants Bottom and North Dean – Chris Morley (Vice Chairman), Jenny McGee, Linda O'Malley and John Rogers; and Widmer End, which includes Four Ashes – Annie Andrew, Trevor Dean, Ian Guy and Hugh McCarthy. At the first meeting after an election and each annual meeting thereafter until another election, the Chairman and Vice Chairman are elected. The other main business at the annual meeting is to elect membership of the Committees, of which Hughenden Parish has three.

The Finance & Administration Committee is made up of the Chairman, Vice Chairman and two members from each of the four wards. This Committee oversees all expenditure of the Council, setting the budget and informing the District Council of the amount required, or 'precept', as it is known. All expenditure for the year is estimated, taking into account the standing commitments such as costs of maintaining the land owned by the Parish Council, salaries, annual grants, utility accounts and general expenses. Any known income, such as allotment rents and burial ground fees, are deducted and the remainder becomes the precept required for the year. As the Parish Council precept is not 'capped', they can actually ask for any amount of money, but the Council are always answerable to the electorate and must be able to justify any significant increase in their requirements.

The Services Committee is made up in the same way as the Finance & Administration Committee and deals with the Parish's land assets. The Council owns eight allotment gardens; three sports grounds, mainly used for playing football with the emphasis being on

encouraging the youth; and three environmental areas, Cockshoot Wood at Widmer End, Vincents Meadow and Pond at Naphill and an area at Hughenden Valley, between the Village Hall and the allotments off Whitfield Road. The Parish has several ponds, much frequented by wildlife and a field currently used as grazing land. The Parish Council also own and run the Garden of Rest at Cryers Hill. This is open to all residents of the Parish and has been extended in recent years to allow enough room for many years to come. The Finance & Administration Committee and Services Committee meet four or five times a year.

The third, and perhaps the most time-consuming, is the Planning Committee, which meets every three weeks throughout the year and is made up of one member from each ward with a standing deputy for each member. Although the District Council is the Planning Authority and therefore make the decisions on each application, the Parish Council acts as a consultee and make their views known on any planning application within the Parish boundaries. Planning applications are received on a weekly basis from Wycombe District Council. Information is noted and then the whole application is sent out to the ward member or their deputy for consideration. At the meeting, the Chairman will allow members of the public to speak, as long as they are not the applicant or the applicant's representative. Neighbours and other interested parties can come to the meeting and raise issues and concerns. The Committee then consider all the information they have been given and reach a conclusion, based on planning policies and guidance notes; the previous planning history of the site; the effect on any neighbours or local amenities and any other circumstances which the Parish Council believe should be taken into consideration for a decision to be made. Written comments are then submitted by the Clerk to Wycombe District Council. These days, most of this is done by computer, which makes it almost instant.

Along with the full Council meetings, which are on the second Tuesday of each month apart from August, the Councillors meet on at least 38 occasions during the year. There are also many other groups and working parties who meet from time to time so, as you can see, being a Parish Councillor can seriously eat into your 'free' time!

I hope you have found something of interest in the above, but if you have any other queries, please contact me, the Parish Clerk, Mrs Lynne Turner on 01494-715296, or by e:mail on hughendenpc@btconnect.com.

Lynne Turner

80 Years in Speen



Poppy and Gordon Ellis—their early days in Speen

On page 25 Poppy and Gordon Ellis recount their early years in Speen.

We hope to bring you other articles from long term residents of Speen and North Dean in coming issues. If anyone would like to record their memories of events, both personal and village related please contact the editor: Stephen Peake on 488293 for a chat.

Ed.

Christmas comes early for Speen Rotarian



Reg receives his Fellowship from President John

At the Princes Risborough Rotary Club's family evening, marking the last get together before Christmas, President John Haywood surprised the meeting when he started the evening's events by the awarding the Paul Harris Fellowship to one of its members.

Reg Taylor very nearly missed the fact that he was being awarded Rotary's most prestigious honour while he was explaining to his wife Sue the significance of the Paul Harris Fellowship!

During 2006, the Rotary Club of Princes Risborough will be celebrating twenty five years in the Risborough area, and the club has marked

the start of the Silver Jubilee celebrations by making the award. As one member said to Reg immediately after the ceremony, "it was the first time in history he had seen him speechless since joining the club!"

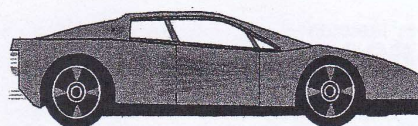
This special award, making him a "Fellow" of Rotary, is given only very occasionally. It is the highest honour a Rotarian can be awarded. It is named after the founder of the Rotary organisation, Paul Harris, (Rotary was founded in 1905) who died in 1934, and the award was devised in his honour after his death. The Paul Harris fellowship is an award presented to the recipient by Rotary colleagues, in recognition of work and services within the Rotary movement, locally, nationally and internationally. The Risborough club has awarded only six such honours to members of their club since their charter twenty-five years ago. John Holmes, another Speen man, received this same recognition in 1998.

The Rotary citation reads "In appreciation of tangible and significant assistance given for the furtherance of better understanding and friendly relations among peoples of the world." Included in the club citation: acknowledgment of Reg's work within the club and money raised with his Bungee Jump from the Victoria Falls Bridge in Zambia, just over two and a half years ago. £16,000 was raised during that project year.

Reg is immensely grateful to the many people in Speen and to his Rotary colleagues who very generously supported "Project Bungee 2003", both financially and at the jump itself at the falls in August 2003.

John W Haywood - President

THE GARAGE THAT
COMES TO YOU!



MOBILE VEHICLE TECHNICIANS

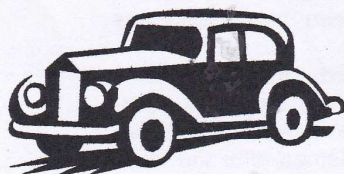
AUTOS - MOBILE

ESTABLISHED 1971

**REPAIRS AND SERVICING TO MOST MAKES. COMPUTER DIAGNOSTICS
BRAKES. CLUTCHES. FUEL INJECTION. ELECTRONIC IGNITION. Etc.**

Cars, light commercials, 4x4s & MPVs, etc. Serviced at home or other place of your choice.

For personal, friendly and professional service.



Call **Bob Wheeler** on

01494 56 40 90 or 07836 673 441

MOTs arranged with a service
or other repairs

No call out charges

P

PARTRIDGE & Co

Tax Advisors and Business Accountants

Local specialists in small business accounts advice and personal tax
issues. For a free initial meeting at your home or business premises

Contact Richard Partridge on 01844-343900.

Tel: 01844-343900 Fax: 01844-343903
e-mail: enquiries@partridgeandco.org

**7d High Street, Princes Risborough,
Buckinghamshire, HP27 0AE.**

80 Years In Speen

See photo on page 25

Gordon Ellis lived in Speen, in the same house, for 80 years. He was born in South Heath in 1925 and moved to Speen a few weeks later when his parents took over the tenancy of The Old King George, a Beer House on Flowers Bottom Lane. His father died in 1932, and his mother, Rose, took over the tenancy and continued to run it for the next 22 years until it was de-licensed in 1954.

Gordon attended Speen school until he was 13 years old, then went to Wycombe Technical Institute for 3 years, after which he worked at Connollys, making wheels.

In 1947, after leaving the army, Gordon started up a garage business in Speen. He bought a shed at Whiteleaf, dismantled it, and rebuilt it at Hillside. It was called Hillside Garage and much of the work was servicing farm vehicles, as well as local tradesmen's vans and a few private cars. He also sold second-hand cars.

About the same time, Gordon met Poppy who was living in High Wycombe with her parents. When Poppy went to visit Gordon and his mother for the first time, she'd never been to Speen, and had no idea what to expect. She went by bus [the return fare was 7 old pence in 1947 : about 3p in today's money] and felt rather apprehensive as the scenery became ever more rural and unfamiliar. She wasn't over impressed with what she found. High heeled shoes were not the best things to wear in Speen at that time! They got married in 1950 and lived at The Old King George, while Rose moved into the adjoining cottage.

Hillside Garage continued to function until 1954 when Gordon ran into problems with the Inland Revenue. He closed the business and went to work at Mars in Slough. Bunny and Stan Brett moved into Hillside and adapted the garage, making it an integral part of the house. When the pub was decommissioned in 1954 Rose Ellis bought it from Wheelers Wycombe Brewery with the help of a loan from Mrs

Danby, whose daughter Katherine lived in Monkton Way until relatively recently.

One of the big differences Gordon notices between the village now, and 60/70 years ago is the SMELLS! Mainly farmyard smells, as there was more livestock around than there is now: horses, pigs, chickens, cows.....

Some Speen residents worked on the local farms, others went to the chair factories in Wycombe, and some women took in washing or did chair caning. A bus service to Wycombe started in 1929 and buses ran more or less hourly from 6.30am to 10.30pm. People also walked, or went by bicycle or motor-bike.

Leisure activities included walking, whittling, the band and choir, pub games, and dances in the village hall. The first time Gordon saw a TV was when Major Caldwell [the first person to have a TV in Speen] invited the children of the village to watch the coronation of George VI in 1937.

The first person to have a radio with speakers [as opposed to headphones] in the early 30s was Bert Linzell in what's now called Chapel Cottage. A lot of people would go to Bert's house to listen, and Gordon's father feared he was losing customers who preferred the novelty of the radio to drinking beer.

There was an outbreak of TB in the village during Gordon's childhood, but he kept good health and his memories are of a happy and contented childhood in Speen.

Rose Ellis died around 1957, and Poppy and Gordon continued to live in the Old King George until they moved to Princes Risborough last year.

Jenny Cowan talked to Gordon and Poppy Ellis before writing this article. Thanks for this Jenny, Gordon and Poppy. We hope to bring you more personal memories of years gone by in future issues. If you might have something to contribute please call me on 488293

Ed



'Surprise Supper' Speen Supporters Group

A very enjoyable evening was spent in the village hall on 3rd February hosted by the SSG. A lovely supper prepared by Jean Baines and

Marjorie Stockley was provided for 50 people who came to support the SSG in their unending task to raise money for 5 local Hospices. Representatives from each of the Hospices gave a short but enlightening speech between courses about their own organizations and how our money has helped them. At the end of the evening, over coffee and mints, each Hospice was

presented with a cheque for £500. The hospices are: Florence Nightingale House; Helen House (incorporates Douglas House); Iain Rennie Hospice at Home; The Hospice of St Francis and The South Bucks Day Hospice



Each hospice was presented with a cheque for £500

Many thanks to all who came to support this event and we hope to see you again at future functions.

Nikki Allan

Ladies night out!

We decided that having read Great Expectations we must go and see the stage version especially as it was on at the R.S.C. What could be more pleasant we thought than spending a gloomy January evening at the theatre? How shall we get there? It was unanimous. A stretched limo. Let's do it in style! Everything was duly arranged by Judith (Newenham) and we all arrived promptly at 16 Abbotswood. It was Friday 13th. We were due to leave at 5.00 p.m. and a call came through at 5.05 to warn us the driver was running half an hour late. He'd had a puncture and was changing the tyre! We had a drink and a bit of a chat and decided not to panic.

limo into the car park, not even outside the entrance and flew into the foyer just as they were announcing "this is the last call to take your seats". We'd made it with two minutes to spare! It was a really excellent production which we all enjoyed. We had recovered sufficiently by the interval to have a drink, including Anna Odlin who had travelled back from Sheffield that evening through horrendous traffic also arriving with only minutes to spare. Our return journey was uneventful and we easily managed to drink two more bottles of champagne. A big thank you goes to Judith for organising it for us, but don't ask her for a recommendation for a stretched limo company please!!

Edie Radford

At 5.30 we leapt into the limo, complete with our rations, champagne, chocs, coffee and shortbread. Obviously this driver knows where he's going we pondered nervously, as we twisted round Devil's Elbow and then the Horses Rest Home. After all he's got Sat Nav. I suppose it could be a bit intimidating having eight opinionated ladies telling you which way to go, but that man deserves no sympathy. After taking us through Naphill, past Hughenden Manor into Wycombe, he then drove us up the West Wycombe road through Stokenchurch to the, very busy (at that time of night) M40.

The interior of the limo was very pleasant, but the coloured lights, music and even the glass of champagne couldn't dispel our anxiety that we might not get there in time. We fell out of the



Ladies in the limo

District and County Council News—January 2006

Internet Land Sales

This issue has become a serious threat to the countryside. In the local area many sites are springing up; Hughenden Valley, Prestwood, Bryant's Bottom, Saunderton x2, Princes Risborough and Church Lane Lacey Green. I am sure that most people will be concerned at the way some landowners are selling off parcels of land for sale in small plots to 'speculators' for resale via the Internet. The plots, advertised as potential building land, fuelled by the announcements of higher housing requirements for the South East, are fetching values well in excess of those for normal Green Belt agricultural land. This is resulting in a patchwork ownership and no overall care for the area.

To counter this threat to the Green Belt, Wycombe District Council has agreed to set up a fund that will allow the acquisition of the land by Compulsory Purchase. Advice is being taken on this approach that, if successful, would give a strong message to the speculators that this practice is not welcome in the AONB. However the proliferation of sites will mean that a step approach to this will have to be taken. Immediate action by the District Council is to pursue statutory notices that remove any permitted development rights including post and fence erection. In addition advice is being taken through Trading Standards to explore whether any investment rules are being broken. If you do see a new site or have any information that could help in any way to prevent the practice then please let me know.

Refuse Collection and Recycling

The Grow scheme has now been in place for a year and, although not rolled out to all District residents, certain patterns are clear. It would appear that whilst the need to recycle is accepted, the alternate weekly collections for some people is causing problems. Judging from the odd check on bins, it is clear that from December onwards the volume of Green Waste is substantially reduced whilst Grey Waste remains at capacity or more.

To address the capacity issue the District is considering introducing a Dry Recyclables (Plastics) collection that will mean a further requirement to separate waste and another box. I must say that I personally I would prefer this type of collection to that of garden waste which for the most part was originally dealt with by home composting or self delivery to the Bledlow centre. It would be helpful to know your views on this matter.

A4010 Woodway / Culverton Junction

Following the public consultation for the improvements for the junction, the development design work for the junction improvements is progressing with the adopted scheme. This scheme seeks to reduce the accident rates by improving the visibility splay for right turning traffic from Loosley Row and give space for traffic to pass when vehicles

are waiting to turn right into Woodway. If all goes to plan with the scheme, which includes bringing in a contract to meet the proposed budget, the work should commence in the next financial year.

The Speed Limit Review

Regrettably this review has been the subject of many frustrating delays over the past year. As you will be aware the County was expecting to review all limits over a three-year period but this has proved to have been an impossible target with officers having to revisit areas many times to ensure that each proposed change is properly documented. The good news is that the final meeting to consider representations has been held and most supported the proposals. This means that work to implement the new limits can commence with the Order applications. After this the new limits will be signed and notification made to the police for enforcement. If you would like to know more then the County Council's website contains pages specifically about the speed limit review.

The address is: www.buckscc.gov.uk/traffic_management/speed_management/review/index.htm

The Village Design Statement

The completion of the statement for Lacey Green and Loosely Row means that the Speen statement can get back on track. A restart meeting will be called shortly to look at the options so any support that can be given will be welcome. If you are still interested in this then please let me know.

Getting Closer to Communities and The Princes Risborough Study

Some of you may have heard of this County Council initiative (GC2C) that looks to provide a more local approach to delivering services. This means that parishes and towns will be linked by 'cluster' where it is seen that they have a common need for service delivery. For Lacey Green Parish it probably means closer links to Princes Risborough and its surrounding villages, as the town is likely to be central to the new 'cluster'. It is therefore also important that the parish has an influence on the Princes Risborough study that is looking to plan the town facilities and expansion up to 2035.

If you would like further information on this or any other subject then please do contact me and I shall try to help.

Paul Rogerson
District & County Councillor
01494 488315

Reliable, Friendly Service

Emergency Spares and Repairs

Drains, Leaks, Loos, Taps

Water Softeners, Tanks

RePlumbing, Bathrooms, Kitchens

Problems investigated, alternative
solutions proposed and the best fit to
your requirements carried out

Based in Upper North Dean

Paul's Plumbing

07786 175123

Local to Naphill, Walters Ash

Lacey Green, Speen, Hampden

Hughenden, North Dean



199757

No Daytime Call-out Fee

Free Estimates

Paul Newman Ltd. 01494 565573

Down on the Farm

We are now in the middle of our winter work schedule. All the cattle bar a few Jersey heifers are in the barns, which makes a lot of work for the farm staff, feeding, bedding and cleaning out. The milking cows eat a mixture of maize and grass silage, wheat, soya, sugar beet, rape meal, and other concentrated forms of energy and minerals.

The younger animals are fed twice a day on a complete calf pellet. The sheep which you may have seen grazing around the farm belong to a farmer from North Bucks. They improve our pastures by nibbling off the rank grass which the cattle will not touch.

As you might guess, whilst they are inside the cows produce quantities of liquid manure (slurry) which we have to dispose of on the land. You must have met the slurry tanker on the road !! We try very hard to do the spreading in dry weather so that the slurry soaks into the soil and so that we don't bring mud onto the road. This is not always possible !! There is frequently a problem of smell depending on wind and humidity. Fortunately the smell never lasts for long and we ask for your tolerance for the few smelly days each year.

At this time of the year a considerable amount of time

is spent in persuading our cows to reproduce. Our aim is for each cow to have a calf annually. Artificial insemination, using the best semen available worldwide, is practised on all Jersey and Holstein cows. If that fails we have a team of Hereford bulls standing by; they can often succeed when AI fails. We keep one Holstein bull, but Holsteins are temperamentally unreliable and often dangerous. We do NOT keep Jersey bulls as they are recognised as the most bad tempered bulls of all the domesticated breeds ! The Hereford is quiet and produces a good beef cross calf. We have a small herd of Pedigree Hereford cows to produce these bulls.

Early next month if the weather is kind you will see tractors out in the fields spreading fertiliser. As all gardeners know, chalky soils are very hungry and the grass does not grow well up here in the Chilterns unless it has encouragement. Our fellow farmers down in the Vale need to use very little fertiliser. If spring comes early you could see the animals out in the fields again at the end of March.

In the next edition I'll give you a brief history of the farm and describe how the ice cream business started

Gill Kent Beechdean Farms
24 January 2006



JOHN BISHOP GARDEN MACHINERY

*Established
1972.*

Sales & Service Agents for: Hayter and Briggs & Stratton products.



Blade/Chainsaw Sharpening and Shear grinding etc. 8hr service

Machine Hire: scarifiers, cultivators, strimmers, hedge trimmers, mowers etc.



Parts: We also stock a wide range for various products.

Free Collection & Delivery

Tel: **01494 563513**
Mob: **07785 353116**

Piggotts Hill – Speen Road – Northdean – Hughenden Valley

LEE DAVIES

BRICKWORK & FIREPLACE SPECIALIST

GAS & SOLID FUEL INSTALLATIONS.

GENERAL BUILDING & ROOFING.

STOVES INSTALLED & CHIMNEYS LINED.

PATIOS, DECKING & FENCING.

CHIMNEY POTS & COWLS FITTED.

GAS FIRES SERVICED & REPAIRED.

BRICK FIREPLACES & INGLE-NOOKS

FOR ALL YOUR FIREPLACE &
BRICKWORK
REQUIREMENTS PLEASE PHONE



01494-488714
OR
07900-156803



Speen and North Dean NEWS

Copy dates in 2006:

**May 5th
September 15th****Contributions to the Editor:**

Stephen Peake, *Beeches, Hampden Road,
Speen: stephenpeake@btinternet.com, tel.
01494 488293; mobile 07785 280055.* Con-
tributions should be in the form of electronic
Word or jpg files wherever possible. Pic-
tures are especially welcome.

Advertising:

Jan Kaya tel. 01494 488696;
jankaya@btconnect.com

Committee members:

Lillian Cash	564969
Megan Chinn	563074
Glenn Hart	488528
Martin Hart	488528
Gloria Holmes	488420
Jan Kaya	488696
Nick Wheeler Robinson	562167

We aim to distribute within 4 weeks of the copy date

**SPEEN
TENNIS COURT**

Play tennis in 2005 on Speen's newly
refurbished court, now as good as any
playing surface in the area

Family membership for residents of
Speen and North Dean
is only £35 per year

This allows you to book the court for
yourself, your family and house guests up
to two weeks in advance and to play in
the ladder leagues

Coaching is available, at all levels,
junior and senior with Kate Brown

**Application forms and further
information from
Cherry Seekins tel 488355**

WANTED

More articles from North Dean for this
magazine

We'd especially like your photos of the
great events in your village. NOTE:
close-ups work best.

SR Farm Contract Services

HEDGE CUTTING—FENCING
GROUND EXCAVATION WORK
PADDOCKS AND LAWNS MOWN
GENERAL GARDEN MAINTENANCE
LOGS SUPPLIED

Tel. Steve Rogers—01494 562041
Bourne Vale, North Dean, High Wycombe HP14 4NH

**SPRINGLINE
CARS PRIVATE HIRE**

• Airport Transfers • Personal Services
• Events & Occasions • Owner Drivers
• London Taxis • Local Knowledge

RISBOROUGH**01844 274 474**

Know the voice, know your driver

**Judith A Newenham**

Full-time Mother
Part-time Curtains Maker

9 Abbotswood
Speen
HP27 0SR
01494 488687
07788 718242



News from Speen Church

Andy writes:

Many thanks to those who contributed to the collection at the **Carols by Candlelight** Service on Christmas Eve – it raised £282.03 for Scam appeal. The all-age music group and choir (photo below) did a great job leading us through the traditional Christmas carols.



In a much more contemporary vein for the young and young at heart **Kids Karols**, on 23rd December, continued to attract a growing audience. This year puppets Rosie and Carol brought along a donkey with a Yorkshire accent and a Buckinghamshire sounding sheep to help tell the Christmas story. After boisterous songs there was a craft activity for the children and coffee & mince pies for adults. In the lead up to Christmas the chapel also hosted **Speen Pre-School Christmas Service** and the **District Carol Concert** for **Hughenden Valley Brownies and Guides**.

The Babysitting Course, which concludes with awarding of Certificates on 7th Feb has been extremely popular, running at capacity numbers. We hope it will provide a stream of excellent babysitters for the community.

The Old Plow is the venue for one of the two **Alpha Courses** running in the community. Malcolm and Olivia are kindly hosting Alpha in the



restaurant on Wednesday evenings – an evening of excellent food, good company and interesting discussion. (Photo: one of the tables enjoying their meal before the discussion). If you are desperate to enjoy one of Malcolm's culinary creations on a Wednesday evening don't worry because the Bistrô is still available. The other Alpha course runs on Saturday mornings over breakfast in the chapel hall. When it coincides with one of the Men's or Ladies Breakfasts, which it did recently, Alpha takes place in the chapel itself. Both Alpha courses have created a lot of interest and it looks as though we will need to run another one after the summer.

The Ladies' Breakfast on 4th Feb, with Catherine McBride, was bursting at the seams with over 60 ladies sharing a traditional cooked breakfast and hearing a very interesting talk.



Coming up soon:

Breakfasts (8:30am in the chapel hall):

Sat 25th March: Men's Breakfast – 'A Surgeon's Story' with Dr Andy Houghton.

Sat 13th May: Ladies Breakfast – 'A "good girl's" story' with Carolyn Bramhall.

Summary of Regular Church Activities

Sundays: 10:30am Worship (for all ages incl. Creche, Children's Sunday groups for 3s-12s and Teens discussion group).

12:00 Fair Trade Stall in church hall (2nd Sunday in month).

Mon: Meetings for Prayer at various homes
8:00pm Evening Home Group at 5 Abbotswood

Tues: 10:30am Men's Book Club at the Manse

Weds: 10:00-11:45am Daytime Home Group – Chynsbrook, North Dean

10:00-11:30am "Time Out" – the Book Club, also One Word, and Questions each half term

Fri: 7:30pm Music rehearsal

Also for men: Men's group events vary, contact Stephen for details 01844 346527

BUCKS OPEN STUDIOS

Visit local artists during Bucks Art Weeks.

Glenn & Martin Hart.

Halcyon, Chapel Hill, Speen.

Sat. 17th June Sun. 18th Fri. 23rd Sat. 24th Sun 25th Fri. 30th

Sat. 1st July Sun. 2nd July 1pm until 6pm .

Roni & Keith Wilkins

87 Main Road Naphill

17th June until 2nd July Mon/Fri 1pm until 6pm

Sat & Sun 11am until 6pm.

Parish Room Painters.

West Wycombe High Street

22nd June until 27th June 11am until 6pm

50plus Handyman

- Plumbing
- Electrical
- General maintenance and more
- Locally based
- Free estimates

0845 22 50 495

www.the50plus.co.uk

By the 50plus for people of all ages



Who's Who in Speen and North Dean

Speen and North Dean News - Editor	Stephen Peake	488293
Speen and North Dean News - advertising	Jan Kaya	488696
Speen Baptist Church - Minister	Andy Gower	488758
Speen Festival – Chairman	Martin Stockley	488101
Speen Fete - Chairman	David King	PR 344839
Speen & North Dean Good Neighbours	Christine Oliver	488409
Speen & North Dean Guides	Pauline Hall	488372
Speen Infants School - Head	Mrs Nayna	488321
Speen Infants School PTA	Lesley Thompson	488524
Speen Marquee - hirings	John Holmes	488420
Mother and Toddler Group	Liz Andrews	488000
Speen Pre School	Lesley Thorn-Davis	488160
Speen Neighbourhood Watch	John Radford	488679
Speen Playing Fields Secretary	Jenny Cowan	488546
Speen Pre-School	Janis Hearn	488440
Speen Residents Association	Gordon Hall	488331
Riding for the Disabled	Gloria Holmes	488420
Speen Singles Group	Dave Howarth	488570
Speen Supporters Group - Chairperson	Christine Oliver	488409
Speen Stores	Sandra Clarke	488258
Speen Tennis Court - Secretary	Cherry Seekins	488355
Speen Village Hall – Bookings and Secretary	Catherine Butler	488412
Speen WI - Secretary	Barbara Collett	488348
North Dean Village Hall - Chairman	Andrew Howard	562775
North Dean Village Hall - Secretary	Jane Vowles	565440
North Dean Village Hall – Bookings Secretary	Megan Chinn	563074
North Dean Village Hall – Buildings/ Development	Andrew Lawson	562136
North Dean Village Hall – Fete Committee and fund raising	Norman Bennett	562897
North Dean Village Hall – Social Committee	Peter Keen	562151
North Dean Village Hall - Housekeeping	Vacant	
Pigotts '748' Musical Evenings	Nick Wheeler- Robinson	562167
Hughenden Parish Council - Chairman	R F Gould	
Lacey Green Parish Council - Chairman	Don White	488437
Lacey Green Parish Council – Councillor for Speen	Roger Craft	488343
Wycombe District Council – Member for Lacey Green, Speen and Hampdens	Paul Rogerson	488315
Buckinghamshire County Council– Member for Icknield	Paul Rogerson	488315
Police Contact number	08458 505505	

THE OLD PLOW BISTRO AND RESTAURANT AT SPEEN

SPRING MENU

Some of the dishes from our Spring menu include:-

Starters

Prosciutto of smoked duck with paw paw and goat's cheese
Italian cured bief bresaola and Iberico chorizo with home made pickles
Hot black tiger prawns la plancha with lemon and garlic mayonnaise
Terrine of Suffolk duck livers with home made apple and cranberry relish
Provencale fish and shellfish soup

Main Courses

Scotch prime fillet steak, beef and horseradish sausage, stilton stuffed mushroom,
vine tomatoes and red wine sauce
Grilled Cornish lambs' kidney, bacon Dijon sauce
Fillet of wild seabass grilled with prawns and mussels
Cassoulet Toulouse with duck breast, venison sausage, smoked pork
and flageolet beans

Desserts

Hot steamed syrup sponge with vanilla ice-cream
Winter berry and Bramley apple crumble
Double chocolate truffle cake with black cherry and Kirsch coulis
Elderflower sorbet with fresh melon and strawberries
Lemon and sultana cheesecake with raspberry coulis

Dishes subject to availability

For reservations, party bookings, small weddings and business lunches,
please telephone 01494 488300.

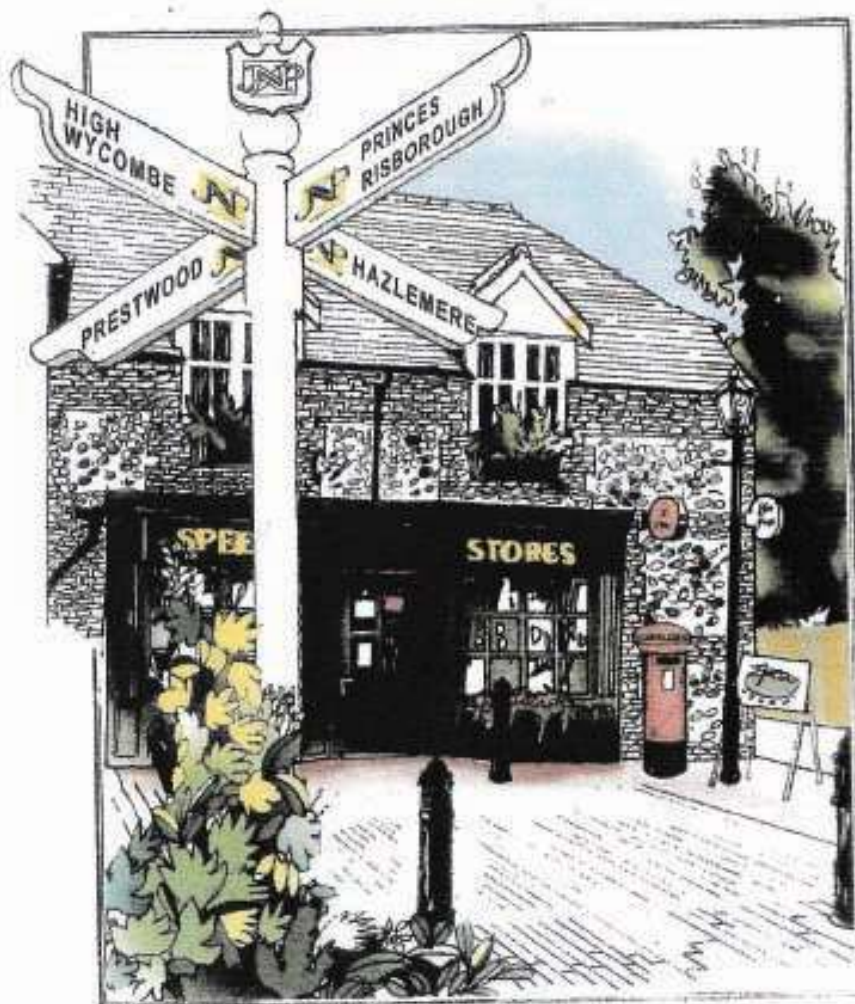
The Old Plow is a non smoking restaurant.

Chef patron and restaurateur Malcolm and Olivia Cowan
The Old Plow Bistro and Restaurant, Flowers Bottom, Speen.
www.yeoldplow.co.uk

All roads lead to



Helping you buy or sell your home in The Chilterns and South Buckinghamshire



ESTATE AGENTS, VALUERS, SURVEYORS, FINANCIAL ADVISORS,
LETTING AGENTS

28, High Street, Princes Risborough
01844 345666

Prestwood 01494 866000 Hazlemere 01494 716000 High Wycombe 01494 528000

FINE & COUNTRY
Agents from The JNP Partnership

01844 343131