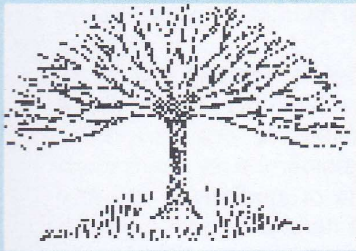


Speen and North Dean NEWS



Issue 37 Autumn 2005

**What else would you
like to see in your
magazine? See page 31**



Kate Adie and Nigel Rees in BBC's 'Quote Unquote' at Speen Festival— pages 18-19



Pigott's Band hitting the high notes at North Dean Fete— pages 8-9



There's something for everyone at Speen Shop—pages 25-26

**More colour
pages inside!**



Your local Estate Agents

High Wycombe Office

31 Crendon Street,
High Wycombe, Bucks.
HP13 6LJ
Tel: 01494 451010

Hazlemere Office

1-3 Penn Road,
Hazlemere, Bucks.
HP15 7LN
Tel: 01494 711777

Prestwood Office

2 Wycombe Road,
Prestwood, Bucks.
HP16 0PW
Tel: 01494 868600

Residential Lettings

1-3 Penn Road,
Hazlemere, Bucks.
HP15 7LN
Tel: 01494 451050

Stokenchurch Office

Kingston House,
Oxford Road, Stokenchurch,
Bucks. HP14 3TA
Tel: 01494 484288

www.philipgreen.co.uk

***Professionals in the sale and rental of quality homes in
Speen, North Dean and the surrounding Chiltern Villages***

Editor's note

Welcome to the Autumn issue

Since the last issue we've welcomed Jan Kaya to our Committee. Jan is our new Treasurer and Advertising Manager and she's made an immediate impact by working with our advertisers to enable us to include more colour pages at an affordable cost.

We're also looking for other ways to improve your magazine and we'd very much welcome your views on what changes you'd like to see. Please contact me or the other Committee members (listed on page 31) with your ideas on things you'd like to see included/excluded, changes in format, frequency etc. etc. We're currently talking to Norman Tyler, the Editor of Hallmark (the Lacey Green and Loosley Row magazine) to find a way of sharing news and information between the villages, starting with our next issues.

Finally a plea! We're very fortunate to receive plentiful contributions from our readers for each issue of SNDN and in this issue North Dean has really been productive. However, many articles are increasingly missing the copy date which can in turn delay the distribution date. This is a serious matter for our paying advertisers on whom we depend for funding of magazine production. In future we therefore need to make the copy date a hard cut-off date, so will regular contributors please carefully note the date below please and don't wait to be prompted! Thank you in advance for your help.

Please send items for the next issue to me: Stephen Peake, Beeches, Hampden Road, Speen HP27 0RU, or by email to stephen.peake@btconnect.com. My phone number is 01494 488293; mobile 07785 280055. Contributions should be in the form of electronic Word or jpg files wherever possible. Pictures are especially welcome.

Contents

North Dean & Speen Golf Day	4
Down on the Farm	6
Speen Pre School	7
North Dean Fete	8-9
Speen Playing Fields News	10
Speen WI Report	13
Wildlife Watch	14
Letters to the Editor	16-17
Speen Festival	18-19
Mary Campbell 1911-2005	20
Planning Applications	20
Community Planning Group - Questionnaire Results	22-23
The Manor at Pigotts	24
All in a Good Cause	25
Don't let our Shop go to Waste	26
Council News	27
Breakfast on the Hill	29
What would you like to see?	31
Speen Baptist Church	32
What's On	34
Who's Who	35

Final copy date for the next issue:

February 10th 2006

Our aim is to distribute within 4 weeks

North Dean - Speen Golf Day

A light mist was hanging over the course as we arrived at Whiteleaf Golf Club on Thursday 6th Oct for the Annual Village Challenge match. Breakfast of Coffee and Bacon Rolls was taken around 8:30, then battle commenced for the Texas Scramble title.

Twenty three players competed in seven teams of three or four players each.

A leisurely Ploughman's Lunch was taken at Midday where the conversation centered on missed puts and lucky chips in - Sorry - accurately placed chip shots! The stalwarts of the morning round were joined by a further fifteen half-dayers, and the serious business of competing for the honour of their respective villages began. Ten teams went out, and the last team just managed to reach the last green before torches were needed to see them home.

An enjoyable Roast Dinner preceded the prize giving. Honours in the morning went to Speen who took the first three team prizes. The afternoon was North Dean's, taking both the individual Championship and the Village Challenge Shield. The results were as follows:

Texas Scramble: 1st Charlie Pearson. Stephen Peake. Phil Green (Speen); 2nd Mark Wengler. Phil Thomas. Bill Groves (Speen); 3rd Reg Taylor. Roger Clarke. Peter Symonds. (Speen)

Nearest the Pin: Tony Bradshaw (North Dean)

Longest Drive: David Kemp (North Dean)

Champion: David Kemp 40pts (North Dean)

Runner Up: Roger Shaw 38pts (North Dean)

3rd: David Clay 37pts BB Speen

4th joint: Tony Bradshaw 37pts (North Dean) and Stephen Peake 37pts (Speen)

Trophy Winners North Dean 345 points

Runners up Speen 304 points

During the afternoon one of the players achieved a lifelong ambition of scoring a hole in one. Unfortunately it was a hooked shot which landed on the adjacent fairway, rolled across the green and dropped into the

hole. Some of his unscrupulous friends insisted it was technically a hole in one so it was drinks all round!

Nine years ago when I first made the Challenge to Speen for a golf match, tongue in cheek I might add, I never expected it to develop into the successful and popular day it is today. Because of its success we now run a Spring competition as well, for the PK Cup.

As next year is the Tenth Anniversary we would like to make it a special event. One idea is to get sponsors to help achieve this. We ran a raffle during dinner which raised £145. As the present Trophy is now full, Ivor Beeks has offered to sponsor a new one - this is a great start. Other suggestions are: golf shirts with logos on, a new putting competition, bigger and better prizes, a commemorative memento for each player, extra prizes within the competition and a hole in one prize.

If anyone would like to help, or knows someone who would, please let Bill or me know. Thanks to all who came along this year and helped to make the day a success.

Bill Groves and Jon Rogers

Did you know?

'Stocking Lane' - do you know the origin of the name (400 years old at least)? You may not - "Stocken" is an old word for timber or wood....hence 'Stockenchurch'.

An 18th century local map marks the "Arrow" inn and the village of **'Napple'**.

The **'Rose and Crown'** was a beer house on Spring Coppice Lane - the second house on the right from Speen Road. Many 'tokens' (a form of local currency used 1790 - 1810) were found in the garden - and there is no record of it as a pub from about 1850.

'Slipes' was the local name for the medieval strips still visible in the fields behind the North Dean Hall 20 years ago.

Nick Wheeler-Robinson

**VERY HAPPY CHRISTMAS AND A HAPPY NEW YEAR
FROM ALL OF US AT THE OLD PLOW BISTRO AND
RESTAURANT AT SPEEN.**

NOVEMBER/DECEMBER NEWS

'We are please to say our special **Bistro 2 COURSE MENU FOR £9.95** will continue to be available up to 4th December **PLUS** the following **SEASONAL BISTRO MENU** will be available for bookings of 8 people or more.'

STARTERS

Cured Spanish chorizo with goat's cheese salad
Scotch oak smoked salmon with paw paw
Provencale fish and shellfish soup
Air cured Serano ham with melon and mustard syrup
Sweet pepper and aubergine salad with shaved Parmesan
Smoked chicken and mango salad, balsamic glaze,
Home made gravadlax of salmon with honey mustard sauce
Poultry liver terrine with home made pickles

MAIN COURSES

Roasted stuffed jambonette of duck, spiced red cabbage
Roasted pancetta wrapped chicken olive with cranberry relish
Hot goat's cheese, leek and Stilton tart with lemon butter sauce
Grilled Scotch salmon with wild mushroom sauce
Grilled lambs' kidneys and bacon with Dijon sauce
Roasted parcels of guinea fowl with herb and parsley stuffing
Grilled French cut rump steak with onion gravy

DESSERTS

Spiced warm mulled wine pudding, white peach coulis, creme fraiche
Banana, rum and chocolate parfait with pineapple coulis
Raspberry sorbet with melon and winter berries
Prune and Armagnac ice-cream with whisky toffee sauce
Hot Christmas pudding with brandy sauce
Mixed cheese platter with walnuts, celery and grapes, glass house port (supp. £2.00)
Double chocolate truffle cake with cappuccino sauce

Dishes subject to availability.

2 COURSE SET PRICE MENU £13.95

3 COURSE SET PRICE MENU £18.95

THIS SPECIAL PARTY MENU IS AVAILABLE TUESDAY TO FRIDAY LUNCH AND DINNER
AND SUNDAY LUNCH FROM 15TH NOVEMBER - 15TH JANUARY 2006 AND CHOICES
MUST BE MADE IN ADVANCE. TO RESERVE A TABLE AND TO FIND OUT MORE ABOUT
OUR ADDITIONAL OPENING TIMES IN DECEMBER, TELEPHONE 01494 488300.

For more information about THE OLD PLOW please visit our website at yeoldplow.co.uk

Down on the farm

August and September are the busiest months in our farming year, so instead of introducing the farms to you and describing how the business has reached its present state, you will be able to look over the hedge as you drive through North Dean and understand what is happening at the moment. The history of the farms can be told at a later date.

Our Jersey herd calves all the year round, but the Holsteins' (black and white) calves are mainly dropped during August and September. Cattle are obliging animals, and unlike wild animals, which produce their young in the spring, cows will breed at any time of the year. We choose the late summer for our Holsteins because the milk buyers pay us a higher price for our milk in the autumn, but as the Jersey milk is all used for the ice cream we need an even supply from them – hence the calving pattern.

Sometimes as many as eight calves are born in one day. We must make sure that every calf has the colostrums from its mother: colostrums contains antibodies which are vital for the calf's good health. Fortunately we are able to get extra help from vet students at this time, as every vet has to work with cattle as part of their training. This year three most attractive girls arrived, much to the delight of the farm staff! Each calf must be tagged at birth with its own unique national number, and this number must be registered with DEFRA (Margaret Becket's empire!). You can appreciate the paper work involved every year for 500 calves.

Apart from ensuring the good health of the new mothers and their calves, we are busy in the fields harvesting wheat and maize, making grass into silage and baling straw for food and bedding. The latter is gathered from Andrew Stubbings' farm at Bradenham as we do not grow sufficient cereals to supply all our straw needs. Nowadays all these operations are very mechanised but as the machinery is very expensive, (a silage harvester costs £150,000) we use contractors to harvest the wheat and maize and to cut the silage, but all the carting back to the farm is done by the farm staff.

By the time you receive the next edition of the Speen and North Dean News, our work days will have settled into a winter routine. I will then explain some of the less attractive aspects of farming, such as slurry spreading, which affect you as a local resident.

Gill Kent – Beechdean Farm.

Hughenden Builders

Established 22 years

All Building Works Undertaken

- ◆ Extensions.
- ◆ Alterations.
- ◆ Loft Conversions.
- ◆ Roofing – all types.
- ◆ Drives, Block paving, Tarmac etc.
- ◆ Patios, Walls, Garden landscaping.
- ◆ Plumbing, Plastering, Carpentry.

Planning Service.

Clear & Concise Plans

Single Story £150.00

Two Storey £300.00

(plus council fees)

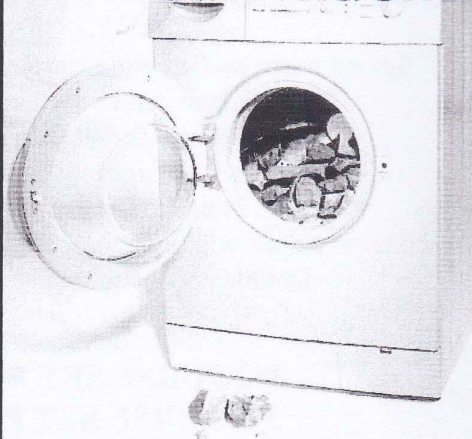
Free detailed estimate with drawing.

Planning fees returned if tender accepted.

171 Main Road
Naphill

Tel: 01494 562937
01494 438057

Mean machine



Hard water can ruin appliances – avoid damage in your home by installing an Ecowater softener. Available from Sterling Softeners, the Ecowater range of intelligent products provides a continuous supply of soft water with the minimum amount of fuss.

To request a free brochure and to find out how you can begin to enjoy the benefits of softened water in your home, call us on freephone 0800 515 377 or visit www.sterlingsofteners.co.uk



Intelligent solutions to hard
water problems available from

Sterling Softeners



SPEEN PRE SCHOOL

Village Hall, Studridge Lane, Speen
01494 488160

Six weeks seems like a very long time, but in the eyes of a child it is almost eternity, especially as you are not attending school!! However, the summer holidays disappeared in a flash and here we are heading towards Halloween and Guy Fawkes celebrations.

The end of the summer term saw the pre-school children enjoying many activities, including the annual sports day which took place on a lovely sunny day, when parents and children enjoyed lunch on the playing field after the races. A picnic/polo afternoon in West Wycombe was also a big success, together with an end of term party where the children were entertained by Jo Jingles and treated to a party lunch. This new school year has seen some staffing changes take place. Mrs Joy O'Neill has now taken over as Pre-School Leader, and Mrs Inga Pope is our Deputy Leader. Yvonne Hanson, together with Janis Hearn, have now stepped down from their positions although we are pleased to report that they are both still very much involved with the pre-school.

The children have started the term looking at themes such as Harvest, My Healthy Body, and

My Senses. A cookery session is being arranged whereby the children can help to make pizzas using a selection of healthy vegetables.

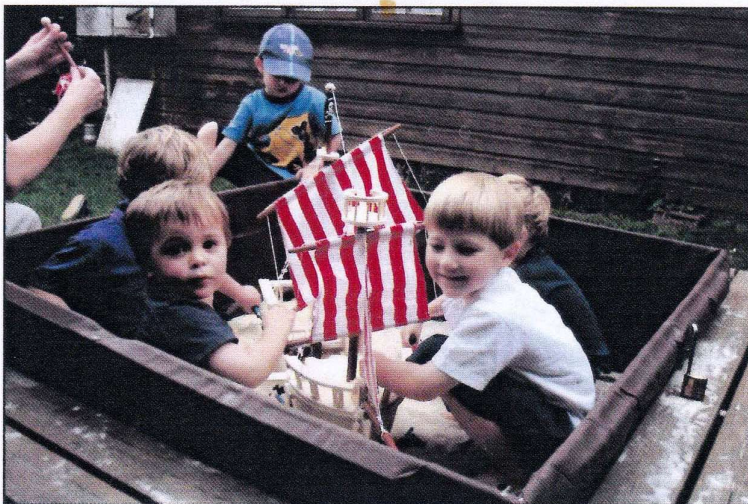
The pre-school depends very much on fund raising activities, being a non-profit making charity. The committee has various evenings planned to take place in the next few months. We are hoping to arrange a "Bring and Play Your Own Vinyl Evening" and it is also envisaged that our much talked about "Burns Night" will go ahead next year.

Look out for more information concerning these not to be missed social evenings!

All in all, we are pleased that the pre-school continues to flourish in the village, and it is as a result of the continued hard work of the staff, committee and parents that recently an Early Years Advisor at County Hall was quoted as saying "Speen Pre-School is one of the most creative settings in the county".

On a rather gloomy note, I am sorry to report that the pre-school play area [sectioned off on the playfield] has yet again been the target of vandalism. The same happens each summer, the sandpit is pulled apart and the area generally made unfit for the children to use. The pre-school was given a plastic playhouse which the children loved, but unfortunately persons unknown decided to use it as an outside toilet. It will now have to be taken down and disposed of. It really is such a shame when older children [I am told they live in the village] set out to spoil it for the younger ones. If anyone sees this kind of vandalism occurring then as a committee we would be pleased to know who the culprits are.

Lesley Thorn-Davis –Chairman, Speen Pre-School Committee



Baby-sitting Course needed?

See letters to the Editor
pages 16-17

Contact Kate Vale
488622

North Dean Fete 2005

This year was a very special one for North Dean Fete! After 40 years' service on the village hall committee, John Rogers did us the honour of opening the fete and, at the same time, he and his wife, Pat, were presented with a wonderful Nuttgens stained glass window portraying the village hall set in the beautiful North Dean countryside.

The Fete was held one week earlier than usual and the weather was, at times, inclement. However, the sun came out as it nearly always does for our Fete and during that time we made record profits for our much-needed refurbishments for the disabled and extended, re-surfaced car park.

Competitions

From 9am on Fete Day the marquee is a hive of activity with entries for all the various competitions being booked in.

There are 22 classes in all in which to compete, ranging from arts and crafts, photography, wine, beer, jam and cake making, and if gardening is your forte you can display your fruit, vegetables and flowers.

All classes are open to all to enter, whether North Dean residents or not, and we have competitions especially for children up to 14 years.

There is no entry fee and we have an impressive array of trophies which are held by the winners for twelve months. The Show schedules are available four weeks before the Fete, so please think seriously about participating next year.

This kind of competitive show has long been at the heart of our country village fetes. It is part of our heritage, but it does need people to keep it alive.

Lillian Cash

Bric a Brac – trash or treasure?

To the folk who flocked to the marquee on Fete Day looking for a bargain: the latter, I think. After two hectic days in the Village Hall, sorting and pricing the mountain of goods so generously donated, the team were now 'ready to go', awaiting the first surge of customers after the opening ceremony.

With so many bargains that North Dean is now famous for 'going for a song'. Who could resist the challenge of finding that certain item worth a mint!

Casting an eye to my left I could see the book stall buzzing with activity, and on the other side toys and clothes were being snapped up at a great rate. The smiles on everyone's face, customers and servers, said it all. A great afternoon!

Megan Chinn.

Tombola

WOW! This year we had no fewer than 400 prizes, and Bob and I were still labelling them when the Fete opened in the Marquee after a sudden downpour. We stuck to the rules and didn't open until John Rogers had officially opened the Fete, but from then on the queue never stopped. The tombola seems to attract every person who comes to the Fete, and North Dean's reputation for many wonderful prizes stands it in good stead. Bob Wheeler, Ron Dibden and I worked tirelessly (well maybe not tirelessly!) from 2.30 pm to 5.50 pm selling tickets. Eventually we sold them all and made a record amount.

The stall is one of the most popular but it needs months of preparation. John and Pat ran it before us and I now know how tiring it can be. However, it is also great fun meeting almost everyone at the Fete during the 2-3 hours we are open and very rewarding as well. Long live the Tombola Stall!

Lillian Cash

North Dean Fete 2005



Musical interlude by
Pigotts Band



Welsh invasion by Jasmine and
Emily Hart



Presentation to John Rogers



The hurdy-gurdy players

Speen Playing Fields News

RIDGLEY'S FIELD

The Planning Application for recreational use, and to use a small area for a children's mountain bike circuit, has been re-submitted. This was to allow the planning authority more time to resolve some landscaping concerns.

PLAY EQUIPMENT

A working party did several jobs on 5th November. A second load of bark has been put around the children's climbing frame and slide. The treads on the roundabout have been replaced. Worn chains and shackles have been replaced.

PAVILION

The Pavilion is being upgraded. The Committee Room and toilets have been painted and old fittings replaced (4 fridges were taken to the dump!). One of the 'changing rooms' is being converted to a store (do you have any redundant vertical storage cupboards?). The other room will be painted but kept for any sporting use. The exterior will be stained next spring.

FINANCES

The funding of playing field maintenance relies mostly on our Monthly Draw. We hope that villagers will buy as many tickets as possible! Tickets are currently £4 per year, and there are 7 prizes every month [1 x £25, 2 x £10, 5 x £5]. In addition there is a £50 prize in the summer [normally drawn on Fun Day] and another one at Xmas, usually drawn during the carol singing. (One of your neighbours will probably have won a prize sometime in the recent past!). We are grateful to the Parish Council and the Shop Charities Fund for funding the safety improvements.

PLAYING FIELDS EVENTS

Bonfire Night is organised for Saturday 5th November. Please buy your tickets from Speen Stores! The Christmas tree lighting with carol singing, mulled wine, hot chocolate and mince pies takes place on Saturday 10th December, 6pm at the pavilion. This year all profits will go to a local charity which helps people with autism.

THANKS

As you can see from the above, a lot of effort is put into planning and running the maintenance, working parties, events and fund-raising that support the Playing Fields. This relies on many people in the village in addition to the Committee. THANK YOU VERY MUCH FOR YOUR HELP.

John Holmes.

TREATS II

A Tradition of Good Toys!











TREATS II

5-7 Duke Street
Princes Risborough
Bucks. HP27 0AT
Tel: 01844 344354
Fax: 01844 274540

TREATS II

**the greatest selection
of toys in the area!
Scientific & Educational**



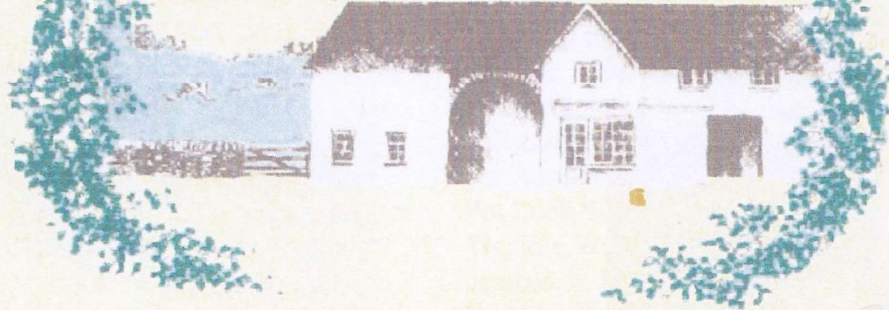






BEECHDEAN

Farmhouse Dairy Ice Cream



**Come to the farm and view
our range of delicious
farmhouse products
You will be amazed
at the selection.**

**available from
Beechdean Dairies,
Old House Farm, North Dean.
Open normal office hours
Monday to Friday**

**Tel : 01494 563980
www.beechdean.co.uk**

North Dean Furniture Restoration

Workshop: 01494 563860 (Day Time)

Mobile: 07770 747470



**The complete restoration service for antique,
reproduction or modern furniture.**

**French Polishing, Damage Repair, Re-Carving
Re-Veneering, Upholstery, Marquetry**



**Upper North Dean Farm, North Dean
High Wycombe, Bucks. HP14 4NJ**

Speen WI Report

For our August meeting we heard about how the Thames Valley & Chiltern Air Ambulance is run. They receive no funding from either Central Government or the National Lottery and are entirely reliant on voluntary donations and support from the community. We were asked to spread the word and one of our members suggested we put it to the Fete Committee that our charity for the fete in 2006 be for this very useful and important facility. I am sure if any of us were in an accident on the motorway, we would be very grateful to use the Air Ambulance if it were necessary. In September Sonia Waterton talked about being a housewife in the dark, as she had been blind for the last 30 years and was determined not to sit back and feel sorry for herself. We also attended our Group Meeting, when the

Sports Commentator, Paul Dickinson, gave an interesting talk and slide show. In October a National Trust shepherd, Howard Horn, gave an hilarious talk on keeping sheep in the Chilterns. Also in early October, some of us, with other Bucks members, enjoyed a lovely day out to Salisbury. Our next few meetings include our Annual Meeting in November, with a Pot Luck Supper, Mr. Runnells Davis on The Idle Woman (what's that!!) in December, in January we welcome Rachel Wheeler-Robinson talking on Music Therapy and in February a talk by Jill Carey on Red Kites. If you want more information about W.I., try the website www.bucksfwi.org.uk/speen. New members always welcome.

Fred Burnham's Decor

High Class Interior & Exterior Decorating

Free Advice given on Home Maintenance

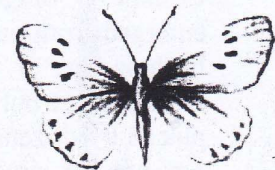
Free Estimates

Sensible Prices and No VAT

Friendly Local Service

No Job Too Small

**Call Fred on
01494 488303**



A Member of The Guild of Master Craftsmen



Wildlife Watch

by Peter Symonds

The summer months again produced some interesting records including some rare insects again.

On 10th July I saw a male purple emperor butterfly in Spring Coppice Lane which repeats sightings in 2002 and 2003. This record was reinforced by a further sighting of one at Great Hampden by Jeremy Symondson on 17th July. Put together with the records for the earlier years this tends to confirm that we have a small local population of this nationally rare butterfly. County records do not show any presence in this area so I will now write to the Butterfly Conservation Trust to ensure that Speen is recorded on the entomological maps.

Other interesting insects included a colourful elephant hawk-moth which strayed from a climbing honeysuckle into a house in Archway in mid July. These attractive large moths have pink and olive green markings to their wings and body. In August a hummingbird hawk-moth, which is a migrant from Europe, was noted hovering around our garden buddleias. Several observers have commented on the relative absence of wasps this summer yet in our own garden they have nested in bird boxes and in two places in the main roof space building grey papery nests.

Countless dragonflies and damselflies emerged from our ponds over the summer. In June one or two broad-bodied chasers were present but during July they were replaced by dozens of large colourful southern hawker dragonflies that emerged on

sunny days, before moving off to find their own territories. A single brown hawker with orange tinged wings was noted later in the season.

As birds finished their nesting, numerous young birds were noted around the village including green woodpeckers, great spotted woodpeckers and marsh tits. One notable success was a pair of buzzards that raised three young in woodland within a mile of Speen Stores. During July and August this particular woodland echoed to the food cries of the hungry young birds. By the middle of August they were circling the nest site and exploring further afield.

In addition to the Speen mallards that raised five or six young mentioned in the previous edition, North Dean had records of eight tame ducklings at Cournswood House. At Great Hampden moorhens did well to raise a single young but the remainder of the brood must have been taken by predators. Numerous reports of sparrowhawk attacks have been received. Dick Seekins reported one in his front tree devouring a chaffinch whilst Anthony Cox managed to photograph one on top of a luckless collared dove on his front drive. The sparrowhawk was plucking the feathers from the back of the dove which was clearly still alive yet completely unable to resist. Other interesting records include a possible lesser spotted woodpecker in Woodview Drive, a woodcock at Redland End and an escaped budgie in North Dean. Our summer visitors have left the village now with large numbers of house martins noted assembling over Hampden Road in mid September, prior to their long flight south.

Please let me know of any further interesting sightings. (Tel 01494 488016)

THE GARAGE THAT COMES TO YOU!



VEHICLE TECHNICIANS

PRO-TECH AUTOMOTIVE

ESTABLISHED 1971

**REPAIRS AND SERVICING TO MOST MAKES. COMPUTER DIAGNOSTICS
BRAKES. CLUTCHES. FUEL INJECTION. ELECTRONIC IGNITION. Etc.**

Cars, light commercials, 4x4s and MPVs, etc. Serviced at home or other place of your choice

For personal, friendly and professional service.

Call **Bob Wheeler** on

01494 56 40 90 or 07836 673 441

MOTs arranged with a service
or other repairs

(No call out charges)



S P E E N S T O R E S

◆ ◆ ◆ ◆ ◆ ◆ ◆ ◆ ◆ ◆ ◆ ◆ ◆ ◆ ◆ ◆ ◆ ◆ ◆ ◆

Opening Hours:

Monday to Friday : 6:45 am to 7:00 pm
Saturday : 8:00 am to 5:00 pm
Sunday : 9:00 am to 1:00 pm

Post Office:

Tuesday & Thursday : 8.30 am to 5.30 pm
Saturday : 9.00 am to 1.00 pm

✧ ✧ ✧ ✧ ✧ ✧ ✧ ✧ ✧ ✧ ✧ ✧ ✧ ✧ ✧ ✧ ✧ ✧ ✧

Groceries, wines & spirits, fresh fruit & vegetables, delicatessen, newspapers and much more ...

Delicious bread, french sticks, croissants, cakes, pain au chocolat, pasties, pies etc. baked daily on the premises. Orders taken 7 days a week.

Telephone: 01494 488258

Letters to the Editor

S.I.D. - THE SPEED INDICATION DEVICE

S.I.D. came to Speen for a week in July to monitor the speeds of vehicles along Chapel Hill. Many of the motorists were unaware that they were being observed and having their speeds noted.

Over 180 cars were travelling in excess of 35mph, 40 of which were travelling between 40 and 46mph. Our children and the elderly are particularly at risk from all motorists who commit these offences, and the police will be consulted as to preventative measures.

S.I.D. will be in the village again in Hampden Road and on Chapel Hill. We can only hope that this device will have made all those who drive through Speen more aware of our 30mph speed limit.

We would like to thank not only those who gave up their time to monitor the speeds over a 12 hour period each day, but all those who drove carefully and within the speed limits through our village. It's important to remember that the difference between 30 mph and 35 mph is an extra stopping distance of over six metres. **AT 35mph YOU ARE TWICE AS LIKELY TO KILL SOMEONE AS YOU ARE AT 30mph.**

The SID Team

A Study Day in Pigotts Wood

Over the last decade there have been a series of days led by John Morris of the Chiltern Woodlands Project, to study the history of Pigotts Wood. This has been part of an increasing national awareness of the largely unstudied evidence of the past to be found in woodland – invisible to the aerial photographs beloved by archaeologists and where a pit or bank, once dug, can last a thousand years, untouched by plough. There is map and documentary evidence too – 19th Century maps are detailed and reliable and earlier evidence of management practices and ownership (for Pigotts Wood, going back to Tudor times) is valuable. To identify the varied evidence in a wood is fascinating – boundary banks, paths and track ways, sawpits (30 in our wood), charcoal hearths, quarries, lynchets, boundary trees and stones – and (our most recent find) two sites with evidence (slag) of Iron Age metal working! This is quite rare in the Chilterns.

These study days have been attended by more than

two hundred enthusiasts from near and far, some archaeologists and local historians, other woodland owners, forestry, tree wardens, walkers and those interested in the Chilterns. The days are held early in the years, when bracken and bramble obscure the ground least, and involve an illustrated talk from John, a practical mapping exercise in the wood, an opportunity to look at the range of documents and speculate on the chronology of the evidence. Pigotts Wood supplied the London firewood market before the furniture trade grew to dominate Wycombe's economy and now classified as an ancient semi-natural woodland (with some new and unpopular rodents – grey squirrels, muntjak and glisglis) is enjoyed for recreation and for the flora and history.

The next study day will be on Thursday 2nd March 2006 and those interested should ring John Morris soon (01844355503) – the group has been over subscribed in recent years.

Nick Wheeler Robinson

Babysitting Course

What do you do when the 10 year old you're looking after refuses to go to bed? Or if the child you're looking after falls ill and you can't contact the parents?

To help young people to cope with these, and many other situations that occur whilst babysitting, the British Red Cross has developed a course "Looking after other people's children".

We will be running the course this autumn for any young people in Year 9 or above who would like to learn more about being a better babysitter.

The course will run fortnightly on Wednesday evenings from 7 – 9pm at the Baptist Church Hall, starting on 2 November.

During seven sessions we will cover: expectations, rights & the law; accident prevention; looking after babies & children; First aid; dealing with challenging babysitting situations.

The course costs £5, which will cover handouts, folder, and a certificate on completion. If you're interested then please contact Kate Vale on 488622 to book a place.

Kate Vale

Letters to the Editor

Dear All—Arivu / Peace Child India Christmas Cards

Many of you supported my trip in India with sponsorship which has benefited the work of Arivu / Peace Child considerably and I hope to publish an update on the project in the next issue of Speen and North Dean News

Please help Arivu raise money for its worthy projects and support the training and education of women from local migrant communities in Bangalore.

Packs of 6 Christmas cards cost £2.50 (including postage and packaging) and come in a variety of designs, all handmade and screen printed onto handmade paper by young women from poor areas of Bangalore. Your support last year has enabled Arivu to purchase a screen printing machine and train these young women in screen printing techniques. Please support the cause again this year by sending your order to me by email (cewalkermalawi@hotmail.com). Payment will be by cheque to Arivu's UK presence in Oxford – the address will be sent to you on receipt of the order – and cards are ready now. If you are ordering from outside the UK, special arrangements can be made for payment – just let me know what your order will be and I can give you a price and payment details. Many thanks in advance.

If you are interested in receiving the regular Arivu monthly e-newsletter, please let me know and you can be added to their mailing list.

I look forward to hearing from anyone who wants to buy Christmas cards soon!

Caroline Walker

Dear Editor

I would like to thank all those who opened their gardens on Sunday June 19th and all those who visited on what was the hottest June day since 1976

(32.5°C). In total we collected £530 for BBOWT (Wild Life Trust).

Margaret Lewis

Dear Editor

Many congratulations to everyone concerned with the Speen Festival. With the wide selection of excellent events there was something for everyone to enjoy. A great deal of time and effort must have been spent on the organisation of this superb event. I really enjoyed everything I attended. Many thanks to everyone.

Jo Banks

Dear Editor

'Well done Speen on the excellent Festival'. I thought the whole production was a great effort and I especially enjoyed Wind In The Willows.

Don White



Richard Ferguson
BUILDER

Established 30 years

FOR... Internal and external alterations

ALSO... Kitchen units fitted, bathroom suites, showers, etc.
Wall and floor tiling, decorating.
Electrical work, patios, porches

AND... All general building work

Telephone 01494 562954 or 07958 984363

Speen Festival

8th to 17th September

2005

The third Speen Festival provided entertainment and interest for hundreds of people during its 10 day run in September. The Festival opened with its own version of the classic "The Wind in the Willows"

complete with a horde of terrifying Wild Wood beasts (the children of the village!) and a succession of original songs. A great cast were given superb make-up and costumes and the show was a complete sell-out every night. The photo shows Roger Craft as the incorrigible Toad.

In a more contemplative mood, an exhibition of photography by local people was presented in the Village Hall early in the Festival and the marquee was used to house a fascinating day of Arts and Crafts in action. There was a wealth of different skills on display at this event; David Eckle is seen here engrossed in furniture restoration.



The incorrigible 'Toad'



Furniture restoration at the Arts and Crafts day

The following night a Festival Quiz drew a merry crowd made merrier by the licensed bar in the marquee, and the next evening Sister Frances Dominica, founder of the world's first hospice for children, gave a moving talk before an audience of nearly 100.

Martin Hart's jazz evenings are always a favourite and this year proved no exception; the subject was Duke Ellington, the music and presentation were (as usual) first class and a capacity audience went home as happy as could be. For those with an interest in wildlife, a presentation of natural history photography was given in the Hall by one of the leading local practitioners.



The 'Wild Wood Beasts'

On the penultimate night, the Festival was proud to stage the return of BBC Radio 4 (you may remember "Any Questions" here in 2003) to record 2 programmes for the popular series "Quote Unquote." Nigel Rees chaired a panel of celebrities and a terrific audience of over 200 nearly raised the marquee with its enthusiasm. Pictures show Nigel Rees with panellists Christopher Matthew, Kate Adie and Rosalind Miles.

The Speen Festival

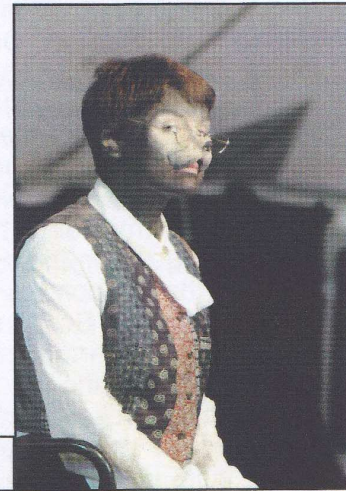
8th to 17th September

2005



The panellists in 'Quote Unquote'

The Festival closed with the Finale Concert and supper where Speen Choir and others presented an evening of songs from the shows and rock 'n' roll greats, in with which the audience were encouraged to join. Photograph shows the barbershop quartet of (l to r) Bob Stupples, Wynne Davies, Martin Stockley and Eric Baines.



'Ratty'



'Mole'



The Barbershop Quartet

This year's Festival was perhaps the best yet, if feedback from the public is anything to go by, and Marje and Martin Stockley would like to record their sincere appreciation and thanks not only to all those who helped to make it happen but also to the hundreds of others who gave their support in coming to watch the various events.

Martin Stockley

Isabella Mary Graham Campbell 1911-2005

Mary Campbell lived in Speen for 54 years and she was well known to villagers as someone who spent much of her life caring for others. The following edited abstracts are taken from the tribute paid to her at her funeral which took place in Dairsey, Fife on 30th July.

Mary was born in Dairsie. She was fourth of five children and the family grew up in a rural busy home where many guests visited and there was a welcoming, generous home life.

When Mary was 18 she went to Guys Hospital to train as a nurse. Eventually she was a sister there for a short time during the Second World War. She came back to Scotland when her father's health started to deteriorate during the war. He died in 1948, and shortly thereafter, Mary moved with her mother to Speen, where she remained, until her own increasing frailty necessitated a move back to Scotland in 2002, to Woodthorpe, near to her sister.

During her residence in Speen, she was a companion to, and later carer for, her mother, who died aged 104 in 1988. She was a full time health visitor; a con-

servationist and eco-warrior, coordinator of annual family gatherings at Speen after Easter, and finally, herself an increasingly dependent neighbour.

Her roles merged with each other. For example, the current post office proprietor, Sandra, remembers when she was at school, Mary coming as the 'Nitty Nurse' to advise and delouse pupils.

Her garden at Speen was cultivated with a strong emphasis on composting and recycling; they were ahead of their time in all ecology issues, including water conservation, and this led to an excellent haul of prizes at the annual local flower and vegetable shows.

Finally, she was firm in her faith. Her grandfather was a leader in the Catholic Apostolic Church, and she has continued life long in to follow the liturgy of this church. She believed in the imminent return of our Lord Jesus Christ, and trusted fully in His redeeming work.

Mary was laid to rest next to her Father in Dairsie cemetery. She was just two weeks short of her 94th birthday.

Parish Council – Planning Applications

Wayside Cottage, Hampden Road	Single storey/side extension	No objection
Stone Cottage, Studridge Lane	Tree pruning and felling	No objection
Cherry Tree Cottage, Studridge Lane	Remove dead wood from pine tree	No objection
Speen Baptist Church	Demolition and re-building of church hall, kitchen, toilets etc	No objection
1 Hampden Gate	Convert garage to new kitchen and erect detached garage	Garage should be constructed in same materials as house and conform to building plan

'If I can put one touch of a rosy sunset into the life of any man or woman, I shall feel that I have worked with God' – Henry David Thoreau

It's so easy to let daily chores and struggles overwhelm us. No matter our age or situation, there are times in our lives when we need support, whether a parent with young children, recovering from illness, or just entering our 'golden' years.

That's why we try to help people put a 'rosy touch of sunset' into their lives. Carewatch is a home help, care service with one simple, but very big difference. We care.

At Carewatch we provide all sorts of services to a wide range of individuals in the community; assisting with any personal needs (such as washing, bathing, toileting), domestic care needs (shopping, cooking, cleaning), help with childcare, relief care for regular carers. Or just simply companionship.

If you're looking for some help, Carewatch is what you're looking for. We really do care.

Call Caroline on 01296 625385 for a private, personal discussion of your needs.

Carewatch (Mid Bucks)
Tel: 01296 625385
Email: ccsmidbucks@hotmail.com



Nicki Thomas Web Design

Quality bespoke websites for a wide range of businesses

Visit www.nickithomas.co.uk on the Web to find out more...

Hedgerows, Studridge Lane
Speen
Princes Risborough HP27 0SA

Tel 01494 488665
Fax 0870 1623908

Community Planning Group Questionnaire Results

The Community Plan was initiated over 3 years ago by the government. I was asked by our parish council to 'look after it'. A public meeting was arranged at the instigation of Wycombe District Council and Bucks Community Action to coincide with the annual parish council meeting. Attendees were invited to identify things that they liked about the parish and things that they wanted fixed. Some 50 or so issues were identified, half a dozen or so being important to a substantial number of people (say, 20 or more).

Several people expressed an interest in setting up an organising group and then formed a steering group of which I was voted in as chairman, with Paul Rogerson as treasurer.

The group has the support of the parish and district councils but operates independently. We have 11 on the steering group now, of whom 4 are from Speen.

800+ questionnaires were issued in Lacey Green, Loosley Row and Speen, and 104 were completed and returned. The age profile shows most respondents to be over 35 with a high proportion over 65. The purpose of the questionnaire was to provide the Steering Group with information about what people wanted or didn't want in the community, and to enable us to identify those issues that would merit attention in the future. Since we had already identified many issues previously, we didn't really expect any great surprises. However, it was considered important to give every household in the parish an opportunity to have its say.

Space prevents our including a more comprehensive report. If anyone would like more detailed information, please contact me on 01844 3448975. For those who have access to e-mail, I can send more information including summaries of the yes/no answers and the comments. In this report we have identified the more significant results, as far as possible, and hope that we have not introduced any unconscious bias. Where Lacey Green is mentioned, it covers both Lacey Green and Loosley Row.

The Yes/No questions are fairly easy to analyse, and we have produced two figures for each – firstly, the percentage in favour of any defined item, this percentage being related to those answering the particular question, and secondly, the response ratio, defined as the proportion of those answering the particular question to the total number of questionnaires returned. The higher the response ratio, the more reliable is the result. With comments we have grouped like comments together to give an indication of the number of respondents expressing a particular view about some issue. Particular comments were often made by only one respondent. These will not be ignored, but are likely to receive less weight than those made by a larger number of people. Many respondents answered only some of the questions, and ignored others. In some cases these omissions were covered by appropriate comment. For example, those without children living in the household

sometimes said that they were not in a good position to answer questions relating to children's activities.

The results have been analysed separately for Lacey Green and Speen. In most instances the percentage support figures and the response ratios were similar for the two villages, although there were noticeable differences over certain topics.

We are extremely grateful to those residents of the parish who did return their questionnaires. Some people went to a lot of trouble to provide valuable comments about a whole range of topics. All contributions will be taken into account in any further work based on the survey. We are also pleased that 22 people offered help in various ways, although three of these did not provide names or addresses so we don't know who they are!

Post Office, Store, Community Centre

This part of the questionnaire was largely directed at Lacey Green residents, and for Speen we comment only on the community centre, for which 63% thought that one was needed. The relatively high support figure for the community centre may be linked to the thought that various communal services might be available. Various needed facilities/services were identified, the most common being a doctor's surgery both in Lacey Green and in Speen. It was also noted that the nearest branches of HSBC bank are in High Wycombe and Great Missenden.

Public services

Levels of satisfaction with public services varied. From comments made by respondents, the activities of the Parish Council did not appear to be well understood, although it received relatively high marks. Comments about the District and County Councils were generally critical, it being considered that services provided were poor and allied to high costs. The main areas of dissatisfaction were the poor condition of roads, the absence of police, and that councils did a lot of talking but were poor on action. The biggest item of dissatisfaction was the high level of council tax. 70 percent of respondents thought that council tax was not a fair and effective way of funding local government. The most popular alternative was for a community charge or similar where everyone has to pay something. Negative responses were high for any property-based tax.

56 percent supported more local employment. There was minority support for commercial development, but industrial development would not be liked. This is not surprising, since one of the attractions of the Parish is that it is located in beautiful countryside, and people don't want it spoiled.

56 percent of Lacey Green respondents favoured the concept of an increase in the parish precept to fund local facilities, but support from Speen was only 42 percent. There were few suggestions for specific items (although under the later topic of needed improvements, there were plenty of diverse proposals). The difference between Speen and Lacey Green as regards private funding of facilities was marked. Not only did Speen support the concept to a much greater extent (50 and 24 percent respectively), but also the amount of money so provided was three times as high. The average amount of money that respondents were prepared to contribute was £44 for Lacey Green and £137 for Speen.

Traffic speed reduction and school parking

These topics have been running sores in both villages for years, to a greater extent in Lacey Green than in Speen. Popular counter-measures were a 20mph limit outside the school, village entry features, and chicanes. Only a minority favoured mini-roundabouts, or shallow ramps.

96% of respondents in Lacey Green thought that parking outside the school was a problem. The most popular solutions included off road parking (28), walking to school (7), school bus (7). Some respondents wanted parking to be made illegal. Other suggestions included reducing the catchment area, shared transport, and the use of parking permits. For Speen, 60% of respondents thought that parking was a problem, to be solved by children walking to school. There were some who wanted 4x4's banned.

Use of Public Transport.

Because of the way in which the questions were framed, and the fact that many respondents did not attempt to answer the questions in this section at all, it is difficult to draw any firm conclusions. Roughly 40 percent of respondents said that nothing would encourage them to use public transport. However, some car users might be persuaded. Lower fares and a more frequent service were the main incentives identified by Lacey Green, together with cross ticketing. Speen respondents wanted extended hours and a more frequent service, together with cross ticketing. The most popular destinations were Princes Risborough, Wycombe, Aylesbury and Thame, in that order. Generally, only a minority of respondents that drive would be prepared to use public transport to make the journeys.

Communications.

95 percent consider it important to have information about what is happening in the parish. Satisfaction with existing communications was a different story. In Lacey Green, 73 per cent thought it satisfactory, but for Speen the figure dropped to 37 percent. The difference between the two villages is interesting and we don't really have an explanation. The only factual difference is that each village has its own magazine, but both magazines received adverse comments about the obsolescence of information! Several respondents thought that a website would be extremely useful. One, at least, suggested communication via e-mail (to those capable of receiving it), supported by hardcopy, notice boards etc.

Waste collection and recycling

Although a small majority favoured the new proposals for waste collection, most respondents already recycle green waste. Only a few respondents understood the potential implications of a fortnightly collection, especially of biodegradable waste. One individual commented that it was stupid.

Leisure and other non-work related activities

Views as to whether there were adequate facilities for children and young people were divided. About half of the respondents thought that there should be an improvement and there were many suggestions, the most popular being a youth club. However, few people

were prepared to help with a youth club. There were those who thought that the natural environment should be perfectly adequate. Several people commented that disabled access to various facilities was an actual or potential problem. There was minority support only for revival of the Twinning Association – 43 percent from Lacey Green, 26 percent from Speen (response ratio 0.69).

General comments

Clearly an overwhelming majority of respondents liked living in the Parish and thought it a great place. The main attractions were the people, the countryside atmosphere, and the community spirit. The main areas identified as needing improvement were traffic, parking at the school in Lacey Green, lack of a village shop in Lacey Green, and road surfaces. The one item clearly identified as a problem elsewhere was the junction between Woodway and the A4010. There was also concern at increasing development in general, as well as possibly within the green belt, and perceived antisocial behaviour in Risborough.

Conclusions

Despite the relatively poor response rate, we believe the results do reflect the collective view of the residents. Although Lacey Green and Speen are separate villages within the parish, there is a high level of agreement on many topics, and this would support our view that the results are valid. Equally, there are some distinct differences. The community planning group aims to look at the whole parish of Lacey Green, which includes both Speen and Loosley Row. 59 percent of Speen respondents wanted separate Parish Councils. No reasons were given for this, although some respondents did not like the link to Lacey Green. Equally, there were also those who would like a greater degree of togetherness, and an end to the 'them and us' attitude.

We held a public meeting on 19 September, at which we presented the results in more detail. The relatively few Speen residents who attended also received a presentation by Wycombe District Council on the GROW scheme, under which both 'green waste' and normal waste are each collected fortnightly on alternate weeks. A primary reason for its introduction is the need for the Council to reduce landfill and to increase the amount of waste recycling. There followed a fairly robust discussion on the advantages and disadvantages of this scheme.

Future plans

Two immediate actions are envisaged. One is the compilation of a 'welcome pack' intended primarily for newcomers to the parish. The other is an improvement in communications starting with a page in each of the two village magazines giving news and information about the other village.

Tony Molesworth

The Manor at Pigotts

Over the winter of 1761-2 nearly 300 cartloads of used bricks were taken from Pigotts in North Dean to Hampden House, as were several loads of panelling, roof timbers and the like. The 'Mansion' was being pulled down, and the materials were taken to Hampden to be reused in building outhouses etc. The bricks had been laid with lime mortar, and cleaned before transport. Labour was cheap, and materials costly. At one point 14 men were working on the demolition.

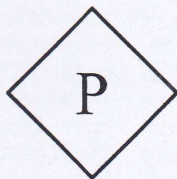
The house had been built in the early years of the century for Richard Sydenham, gent, self styled 'Lord of the manor of Pigotts' and in 1727 High Sheriff of Buckinghamshire. He had made money in London, and bought Pigotts, Smiths Farm, Lower Dean Farm, Warren Farm, Hatches Farm, Millers Tenement, The Harrow alehouse, Wiggins Farm (Bledlow), two tenements in North Dean, and two in Speen. This was a 'gentlemen's estate', and was sold by his heir in 1755 to the Hampdens for £8,610 – of this the Mansion House was valued at £500.

The Hampton estate advertised 'poor Pigotts' to let to a 'gentleman tenant' for 16 guineas a year and four guinea "for the use of the close". They had little use for an expensive house or the size of their large estate, and finding no tenant, took down the house Sydenham had built two generations before.

What did the house look like? Given the date and Sydenham's social ambitions it was probably a pleasant "Queen Anne" house of moderate size (there is the tantalising possibility that he had a painting made of his new house – and that could still exist – somewhere!)

At Pigotts the evidence is now all 8 inches down – we have found a length of 131 two inch brick foundations that angle in under the existing buildings, a pathway, a soak away filled with old bricks (now back in use) a shallow right angled bank, and in different parts of our orchard broken bricks. The existing Pigotts buildings are thought to have been built in the 1760, when Pigotts became the tenant farm it remained till Eric Gill bought it in 1928 (for £500 down and the rest on the bank).

Nick Wheeler Robinson



PARTRIDGE & Co

Tax Advisors and Business Accountants

Local specialists in small business accounts advice and personal tax issues. For a free initial meeting at your home or business premises

Contact Richard Partridge on 01844-343900.

Tel: 01844-343900 Fax: 01844-343903
e-mail: enquiries@partridgeandco.org

**7d High Street, Princes Risborough,
 Buckinghamshire, HP27 0AE.**

All in a good cause

Speen Shop Charities Committee

Speen Stores – our ‘useful little shop’ - is a major feature of the village and an important focal point of community life. It is not just a place to stock up on provisions or send post by Special Delivery for it also serves as a meeting place where villagers catch up on news and events. Peter and Sandra Clarke who have been running the shop since May 2001 provide an invaluable service to the community.

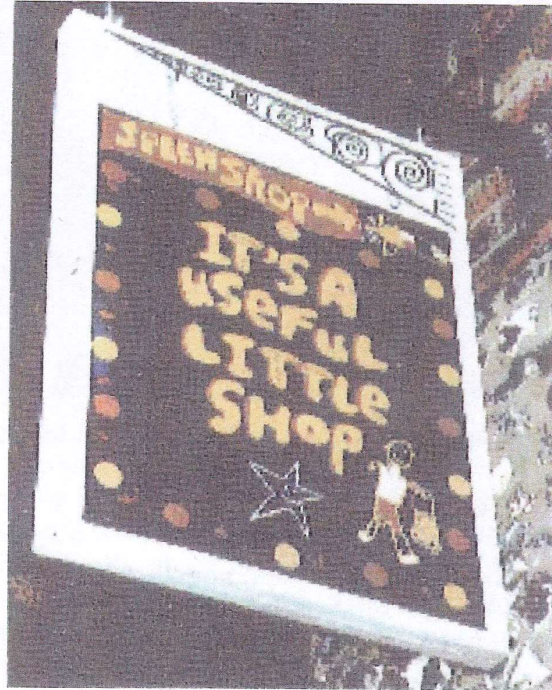
The village gains in another very important way from the shop. The rent paid to the Bucks Housing Association is given back to the village to support its own worthy causes. Every three months the Speen Shop Charities Committee receives £750 and meets to allocate these funds on a priority basis. Applications are considered from any individual or community group provided the purpose is for a worthy, non-commercial cause (educational, medical or social) and benefits a resident of Speen or its community.

Over the years some individuals and many community groups have benefited greatly from the funds - from goal posts for the playing field, to helping set up a new children's club. In 2004/05 the following grants have been, or are in the process of being, made:-

Speen Festival (stage equipment)	£678
Speen Pre-school (support)	£700
(educational rugs)	£350
Speen Playing Field Assoc (safety improvements to playground)	£500
Children's football (goal posts)	£206
Fun Day (equipment)	£350
Toddler Group (equipment)	£103
School PTA (school kitchen cooker)	£550
Bike Park (towards creation of new bike park in Dan Ridgeley's field)	£800

If you know someone who might benefit from

a grant, or if you have an idea that will benefit all or a section of the community, then please contact any member of the committee. Sadly, after more than four years of providing



for our needs Peter and Sandra Clarke are thinking of retiring in the New Year due to ill health. We will miss them greatly and the contribution they have made to community life. In the mean time they would welcome talking to anyone who may be interested in taking over running our really useful little shop.

Speen Shop Charity Committee members are:

Judi Booth	
Tim Crossley	01494 488269
Jane Fleming/Rosemary Pickworth (Bucks Housing Association)	01494 532808
Andy Gower – Chairman	01494 488758
Peter King	01494 488189
Jill Rogerson	01494 488315
Don White	01494 488437

Andy Gower

Don't let our shop go to waste



'There's something there for everyone's need'

DON'T LET OUR SHOP GO TO WASTE

Great Grandma, Grampy, Mum and I,
Use our handy little shop to buy,
Many different things to suit our taste.
Like cakes or sweets and even toothpaste

Four generations who live in Speen
In our village shop are often seen.
The pick 'n' mix I like the most,
I even go to get my post

There is something there for everyone's need,
So off we go at breakneck speed.
Hurry back while making haste....
DON'T LET OUR SHOP GO TO WASTE!!!!

Emily Radforth (11 years)

For more information about Speen
Shop see 'All in a good cause' on
p25



'The pick 'n' mix like the most'



Fresh bread baked daily by Peter and Sandra

Council News—October 2005

Internet Land Sales

Whilst this issue does not as yet directly affect Speen, Lacey Green or Loosley Row, I am sure that most

people will be concerned at the way some land-owners are selling off parcels of land for sale in small plots to 'speculators' for resale via the Internet. The plots, advertised as potential building land and fuelled by the announcements of higher housing requirements for the South East, are fetching values well in excess of those for normal Green Belt agricultural land. Five sites have been advertised and include Bryants Bottom, Saunderton and Hughenden Valley.

To counter this threat to the Green Belt, Wycombe District Council has agreed to set up a fund that will allow the acquisition of the land by Compulsory Purchase. Advice is being taken on this approach that, if successful, would give a strong message to the speculators that this practice is not welcome in the AONB. Legally enforceable notices have already been gained to remove any permitted development rights that include fencing, and in addition advice is being taken through Trading Standards to explore whether or not any investment rules are being broken.

A4010 Woodway / Culverton Junction

Those who visited the recent exhibition will have seen the proposed improvements for this junction. The proposals seek to reduce the accident rates by improving the visibility splay for right turning traffic from Loosley Row, and giving space for traffic to pass when vehicles are waiting to turn right into Woodway. The consultation results will be considered prior to the finalisation of the scheme that is programmed for commencement next year.

The Speed Limit Review

Over the past year this review has been the subject of many frustrating delays for which I apolo-

gise. As you will be aware, the County Council was expecting to review all limits over a three-year period but this has proved to have been an impossible target with officers having to revisit areas many times to ensure that each proposed change is properly documented.

The good news is that the County Council did agree to keep our area (Area 5) a high priority so that progress with Tranquil project would be also kept on track. I have been given assurance that final public consultation through advertisement will be carried in November 2005 with implementation in Spring 2006.

A budget of £500,000 has been allocated to the speed limit review for the current financial year. This should enable signing and roundel markings to be in place for Area 5 by April 2006. The County Council's website now contains pages specifically about the speed limit review. The address is: www.buckscc.gov.uk/traffic_management/speed_management/review/index.htm

By the middle of October a link from these pages to the 'bucksmaps' section of bucksonline.gov.uk will also enable people to view the latest speed limit proposals for their area of the County.

Community Projects

For those who are planning Community Projects this year I am pleased to say that both councils have agreed to continue funding for projects within my Ward / Division. If you have a project then please let me know and I will do what I can to help.

Paul Rogerson
District and County Councillor
01494 488315

Reliable, Friendly Service

Emergency Spares and Repairs
 Drains, Leaks, Loos, Taps
 Water Softeners, Tanks
 RePlumbing, Bathrooms, Kitchens

Problems investigated, alternative
 solutions proposed and the best fit to
 your requirements carried out

Based in Upper North Dean

Paul's Plumbing
 07786 175123

Local to North, Wotton, Ash,
 Rosey Green, Speen, Hornaden,
 Hughenden, North Dean



No Daytime Call-out Fee
 Free Estimates

Paul Newman Ltd. 01494 565573

Breakfast on the Hill

On a brilliantly sunny Sunday morning in June, a group of North Dean residents celebrated Father's Day with a traditional picnic breakfast on a hill.

The chosen spot this year was towards the lower end of the village, on the edge of Pigotts Woods and above North Dean House, overlooking the whole of Hughenden Valley and Stocking Woods.

The views were spectacular, confirming yet again that this is an area of outstanding natural beauty, and how lucky we are to be living here.

Gary and Allyson Holmes, our newcomers to North Dean, were the chefs in charge, and all contributions brought and all permutations of the traditional breakfast were expertly cooked by Gary on the BBQ. Allyson dispensed Bucks Fizz and the Sunday papers.

This is such an enjoyable regular feature on the North Dean Calendar that I would urge the non-attenders to give it a try next year. A little sacrifice is required, so get the food organised the evening before and the body organised for an early start. The socialising is enjoyed by all, adults, children and dogs, and the views from our North Dean hilltops are breathtaking and make it all worth while.



Chefs in charge



JOHN BISHOP GARDEN MACHINERY

*Established
1972.*

Sales & Service Agents for: Hayter and Briggs & Stratton products.



Blade/Chainsaw Sharpening and Shear grinding etc. 8hr service

Machine Hire: scarifiers, cultivators, strimmers, hedge trimmers, mowers etc.



Parts: We also stock a wide range for various products.

Free Collection & Delivery

Tel: 01494 563513
Mob: 07785 353116

Piggotts Hill - Speen Road - Northdean - Hughenden Valley

LEE DAVIES

BRICKWORK & FIREPLACE SPECIALIST

GAS & SOLID FUEL INSTALLATIONS.

GENERAL BUILDING & ROOFING.

STOVES INSTALLED & CHIMNEYS LINED.

PATIOS, DECKING & FENCING.

CHIMNEY POTS & COWLS FITTED.

GAS FIRES SERVICED & REPAIRED.

BRICK FIREPLACES & INGLE-NOOKS

FOR ALL YOUR FIREPLACE &
BRICKWORK
REQUIREMENTS PLEASE PHONE



01494-488714
OR
07900-156803



What would you like to see in Speen and North Dean News?

One clear finding of the questionnaire which was circulated in Lacey Green, Loosely Row and Speen (see 'Lacey Green Community Planning Group' pages 22-23) was that 95% of people consider it's important to have information about what is happening in the parish. In Speen, however only 37% of people thought that this was satisfactory. Two magazines serve the villages (Hallmark and Speen and North Dean News) but both received adverse comments about the obsolescence of information. It's inevitable of course that some information will be up to 4 months old since SNDN is published only three times per year, but we would like to ensure that the magazine provides information which is interesting and useful. We would therefore like your honest

and creative ideas on how we can do better. Please contact me on 488293 or at stephen.peake@btconnect.com, or speak to one of the SNDN Committee about your views:

Lillian Cash	564969
Megan Chinn	563074
Glenn Hart	488528
Martin Hart	488528
Gloria Holmes	488420
Jan Kaya	488696
Nick Wheeler Robinson	562167

We'll all be very pleased to hear from you and we'll do our best to put your wishes into practice.

Stephen Peake

SPEEN TENNIS COURT

Play tennis in 2005 on Speen's newly refurbished court, now as good as any playing surface in the area

Family membership for residents of Speen and North Dean is only £35 per year

This allows you to book the court for yourself, your family and house guests up to two weeks in advance and to play in the ladder leagues

Coaching is available, at all levels, junior and senior with Kate Brown

Application forms and further information from
Cherry Seekins tel 488355

COPY DATES IN 2006:

February 10th
May 5th
September 15th

We aim to distribute within 4 weeks of the copy date

SR Farm Contract Services

HEDGE CUTTING—FENCING
GROUND EXCAVATION WORK
PADDocks AND LAWNS MOWN
GENERAL GARDEN MAINTENANCE
LOESS SUPPLIED

Tel. Steve Rogers—01494 562041
Suez Vica, North Dean, High Wycombe HP14 4NH



**SPRINGLINE
CARS** PRIVATE HIRE

• Airport Transfers • Personal Services
• Events & Occasions • Owner Driver
• London Trips • Local Knowledge

RISBOROUGH
01844 274 474

Know the voice, know your driver



Judith A Newenham

Full-time Mother
Part-time Curtain Maker

9 Abbotswood
Speen
HP27 0SR
01494 488687
07788 718242



News from Speen Baptist Church

Andy writes:

In an active community like ours there is always going to be a heavy demand for baby-sitters, and of course the pool of available babysitters needs constantly renewing as the older teenagers go off to University or find other things to do with their time. So this autumn we are running the **British Red Cross course "Looking after other people's children."** The Course runs for seven evenings from 7 – 9pm on Wednesday fortnightly, starting on 2 November. Spaces are limited so see Kate Vale's separate article in S&ND News for the details of how to book.

For those men and women who missed the excellent **Oxford Job** trip to the BMW Mini factory at Cowley, another trip – **the Oxford Job revisited** – is being planned for a mid January Thursday evening.



Arrangements will be as before with a coach leaving Speen at 6:00pm; arriving at the factory at 7:00pm for a tour lasting 2½ hours. Then returning at 9:30pm, arriving at Speen 10:15pm followed by optional visit to the De Wanium.

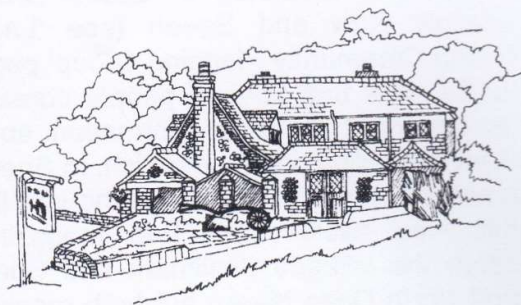
Cost of coach travel and tour is around £12. The group size is limited to 30 so please book your provisional place early with Graham Peart on 01494 488327, or graham@advancedinteriors.net.



In the New Year we will again be running the popular discussion based Alpha Course where folk can explore the meaning of life over a meal. This time we will be using two different venues based on different meal options.

For those preferring an evening venue over dinner Malcolm and Olivia are kindly extending the excellent hospitality of the Old Plow, so there will be Alpha at the Old Plow, starting with the

introductory supper 7:45pm Wednesday 18th January.



For those with a preference for a Saturday morning breakfast there will be Alpha over breakfast, at Speen Baptist Church Hall, starting with the introductory breakfast 8:30-10:00am Saturday 14th January.

Coming up this autumn:

Breakfasts (in Speen Baptist Church Hall):

Sat 12th November: Ladies Breakfast - 'A Hindu's Story' with Kumar Rajagopalan.

Sat 3rd December: Men's Breakfast - 'Living Under Pressure' with Geoff Shattock.

Christmas Events:

Friday 2nd Dec 9:30am **Speen Pre-School service**

Wednesday 7th at 6:00pm **Wycombe & District**

Brownies & Guides Carol Service

Friday 23rd at 5:00pm **Kids Karols.**

Christmas Eve at 6:00pm **Carols by Candlelight.**

Christmas Day at 10:30am **Family Celebration.**

Summary of Regular Church Activities

Sundays: 10:30am Worship for all ages incl. Creche, Children's Sunday groups for 3's-12's and Teens discussion group.

12:00 Fair Trade Stall in church hall (2nd Sunday in month).

6:00pm Music rehearsal

Mon: Meetings for Prayer at various homes

8:00pm Evening Home Group at 5 Abbotswood

Weds: **10:00-11:45am** Daytime Home Group – Chinysnook, North Dean

10:00-11:30am "Time Out" – the Book Club Also One Word, and Questions each half term

7:30pm YAC (teens group)

Thurs: **10:30am** Men's Book Club

Also for men: Men's group events vary, contact Stephen for details 01844 346527

SMILE PHOTOGRAPHY

PORTRAIT DAY

LARGE OR SMALL

FAMILY OR FRIENDSHIP GROUPS

6th November and 20th November

IN SPEEN VILLAGE HALL

**THERE WILL BE PROOF PACKS, SO YOU
CAN SELECT BEFORE YOU ORDER.**

**You will need to make an appointment
with Lois or Paul on
(01494) 488174**

These photographs will be guaranteed ready for Christmas.

50plus Handyman

- **Plumbing**
- **Electrical**
- **General maintenance
and more**

- **Locally based**
- **Free estimates**

0845 22 50 495

www.the50plus.co.uk

By the 50plus for people of all ages



What's on in Speen and North Dean

	November	
3rd	Annual Meeting—WI	Speen Village Hall 7.45pm
4th	Village Hall Quiz	Speen Village Hall 7.30 for 8.00pm
5th	Speen Bonfire Night—tickets from Speen Shop	Speen Playing Field
20th	North Dean Family Lunch	
	December	
1st	Idle Women talk by Runnels Davis—WI	Speen Village Hall 7.45pm
3rd	Christmas Fair	Speen Village Hall 2.00pm
10th	Christmas Tree Lighting, Carols, Mulled Wine and Mince Pies	Speen Playing Field 6.00pm
23rd	Carols in North Dean Village Hall	North Dean Village Hall
	January	
5th	Music Therapy by Rachel Wheeler Robinson—WI	Speen Village Hall 7.45pm
14th	Alpha Introductory Breakfast—Explore the meaning of life (RSVP Graham Peart 488327)	Speen Baptist Church Hall 8.30-10am
18th	Alpha Introductory Supper—Explore the meaning of life (RSVP Graham Peart 488327)	The Old Plow 7.45pm
	February	
2nd	Red Kites by Jill Carey—WI	Speen Village Hall 7.45pm
10th	Final copy date for Speen and North Dean News	
	March	
2nd	Pigotts Wood Study Day by John Morris—see letter page 16	Pigotts Wood

COPY DATES IN 2006:

February 10th
May 5th
September 15th

We aim to distribute within 4 weeks of the copy date

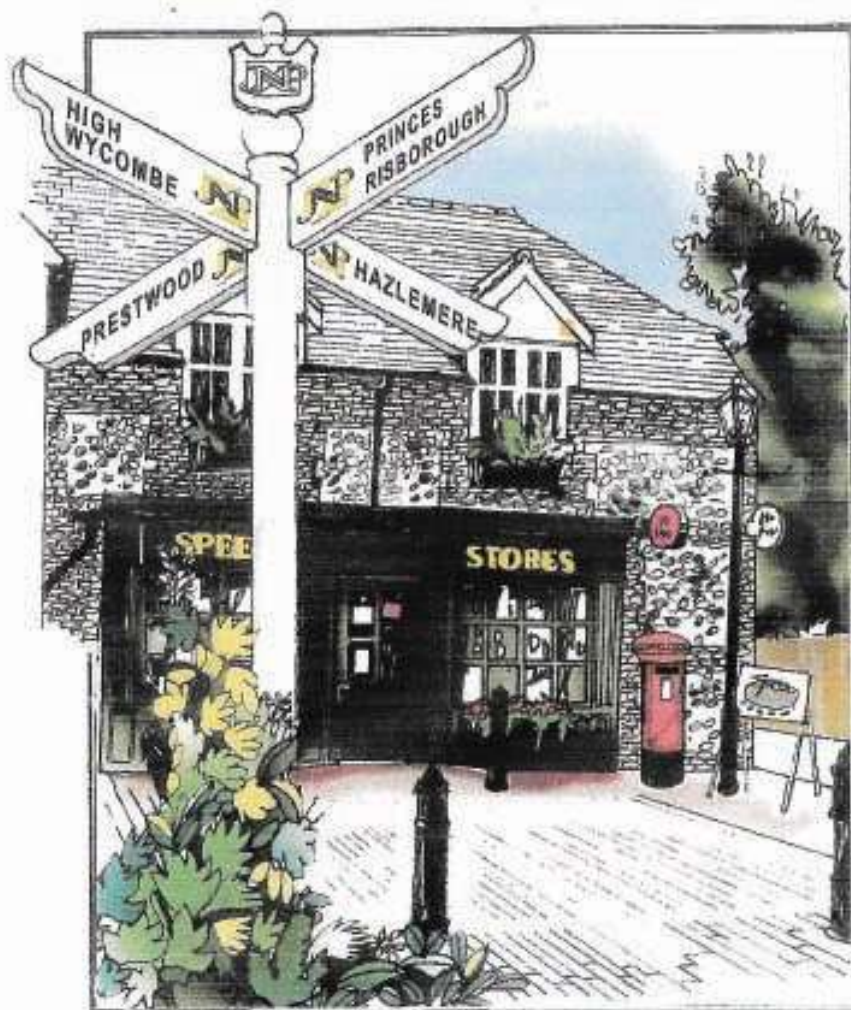
Who's Who in Speen and North Dean

Speen and North Dean News - Editor	Stephen Peake	488293
Speen and North Dean News - advertising	Jan Kaya	488696
Speen Baptist Church - Minister	Andy Gower	488758
Speen Festival – Chairman	Martin Stockley	488101
Speen Fete - Chairman	David King	PR 344839
Speen & North Dean Good Neighbours	Christine Oliver	488409
Speen & North Dean Guides	Pauline Hall	488372
Speen Infants School - Head	Mrs Nayna	488321
Speen Infants School PTA	Lesley Thompson	488524
Speen Marquee - hirings	John Holmes	488420
Mother and Toddler Group	Liz Andrews	488000
Speen Pre School	Lesley Thorn-Davis	488160
Speen Neighbourhood Watch	John Radford	488679
Speen Playing Fields Secretary	Jenny Cowan	488546
Speen Pre-School	Janis Hearn	488440
Speen Residents Association	Gordon Hall	488331
Riding for the Disabled	Gloria Holmes	488420
Speen Singles Group	Dave Howarth	488578
Speen Supporters Group - Chairperson	Christine Oliver	488409
Speen Stores	Sandra Clarke	488258
Speen Tennis Court - Secretary	Cherry Seekins	488355
Speen Village Hall – Bookings and Secretary	Catherine Butler	488412
Speen WI - Secretary	Barbara Collett	488348
North Dean Village Hall - Chairman	Andrew Howard	
North Dean Village Hall - Secretary	Jane Vowles	565440
North Dean Village Hall – Bookings Secretary	Megan Chinn	563074
North Dean Village Hall – Buildings/ Development	Andrew Lawson	562136
North Dean Village Hall – Fete Committee	Vacant	
North Dean Village Hall – Fund Raising and So- cial	Peter Keen	562151
North Dean Village Hall - Housekeeping	Vacant	
Hughenden Parish Council - Chairman	R F Gould	
Lacey Green Parish Council - Chairman	Don White	488437
Lacey Green Parish Council – Councillor for Speen	Roger Craft	488343
Wycombe District Council – Member for Lacey Green, Speen and Hampdens	Paul Rogerson	488315
Buckinghamshire County Council– Member for Icknield	Paul Rogerson	488315
Police Contact number	08458 505505	

All roads lead to



Helping you buy or sell your home in The Chilterns and South Buckinghamshire



ESTATE AGENTS, VALUERS, SURVEYORS, FINANCIAL ADVISORS,
LETTING AGENTS

28, High Street, Princes Risborough
01844 345666

Prestwood 01494 866000 Hazlemere 01494 716000 High Wycombe 01494 528000

FINE & COUNTRY
Home from The JNP Partnership

01844 343131