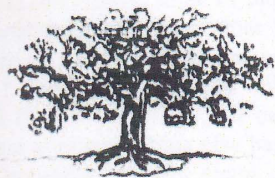
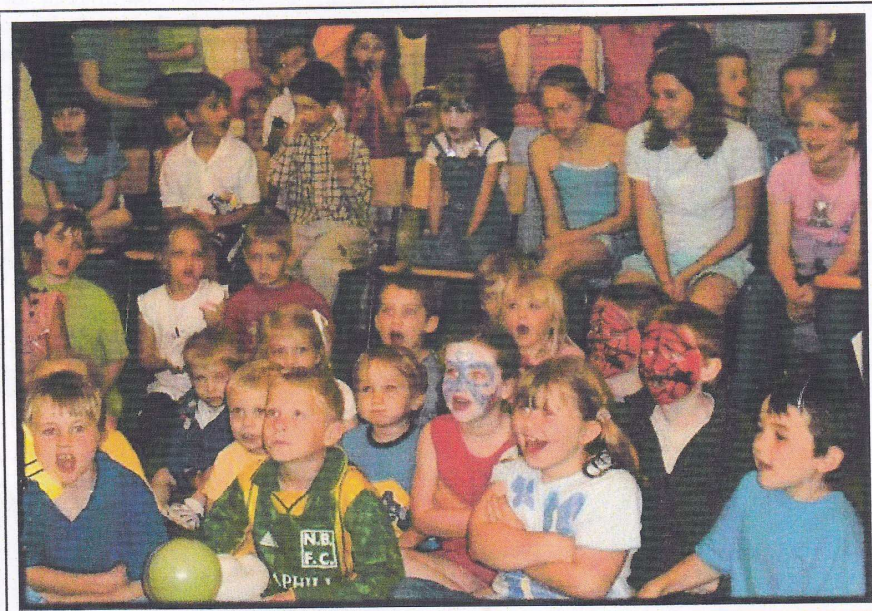


Speen and North Dean **NEWS**



Issue 30 Summer 2003

Speen Fun Day



Wildlife Watch

Naff Shirt Day





Your local Estate Agents

High Wycombe Office
31 Crendon Street, High Wycombe
Bucks. HP13 8LJ
Tel: 01494 451010

Hazlemere Office
1-3 Penn Road, Hazlemere
Bucks. HP15 7LN
Tel: 01494 711777

Prestwood Office
2 Wycombe Road, Prestwood
Bucks. HP16 0PW
Tel: 01494 859600

Residential Lettings
1-3 Penn Road, Hazlemere
Bucks. HP15 7LN
Tel: 01494 451050

www.philipgreen.co.uk

***Professionals in the sale and rental of quality homes in
Speen, North Dean and the surrounding Chiltern Villages***

Editor's note

The problem for a publication that comes out 3 times a year is that, inevitably, some of the content is quite old by the time it hits the front door mat - and yet other bang up to date happenings miss the copy deadline by a whisker. For instance, Speen Village Hall has been damaged by a kitchen fire just before this piece was written but after everything else has been put to bed, so there is no report on that event other than this brief mention. The compensation for us is in the wide variety of village activities that occur in a period of several months and on which we can therefore report. However, the reports on what's happening and details of future plans largely depend on you, the readers, keeping us informed, so please keep it coming! Articles are fine by e-mail, floppy disc or hard copy, and photos are very welcome too - it would be nice to have more. My e-mail address is: majos@btinternet.com, telephone 01494 488101, address Driftway House, Coleheath Bottom, Speen HP27 0SZ.

Martin Stockley

Final copy date for the next issue

November 1st 2003

and our aim is to distribute
approximately 4 weeks later

Contents – issue 30

Young green fingers	4
Cancer Unit appeal	5
District & County Council News	6
Summer Quiz	7
Have you seen SID? - traffic in Speen	9
Community Plan update	10-11
Letters	12
"Pot Luck" - Speen Supporters Group	16
What's going on? - traffic in North Dean	18
North Dean Village Hall activities	20
Speen WI news	21
Bin it or recycle it	22
Speen & North Dean & golf report	24
More news from North Dean Village Hall	25
Review of North Dean events	26
Wildlife Watch	28
News from Speen Baptist Church	29
Speen Fun Day	33
What's On?	34
Who's Who?	35



Is your water as hard as nails?

60% of British households suffer from these sure signs of hard water problems:

- Blocked shower heads
- Slow-running taps
- Scum marks in baths and basins
- Excessive use of household cleaners
- Harsh, hard towels and clothes
- Increased water heating bills
- Scaled-up kettles and appliances



Nail all your hard water problems by installing an EcoWater system

Sterling Softeners

WATER TREATMENT SPECIALISTS

Sterling Softeners
Courns View House, North Dean,
High Wycombe, Buckinghamshire, HP14 4NN
Telephone/Fax: 01494 565232



Front cover photos

Speen Fun Day - the children enjoy the Magic Show (photo John Radford). Another great family day on Speen Playing Field. Full report on page 33.

Wildlife Watch - the squirrel, a familiar sight here most times of the year (photo Peter Symonds). On page 28, Peter reviews both the familiar and the less common creatures that share our villages and their surroundings.

Naff shirt competition - observed in the William. Some more gross examples turned up after this picture was taken, but the eventual winner was Peter Symonds, second left. (Photo Martin Stockley)

YOUNG GREEN FINGERS



These youngsters from Speen School have been busy sowing seeds and potting on, assisted by George Butler. They hope to produce some magnificent blooms for display at the Speen Village Fete on 12th July, in the Best Sunflower competition. The Fete organisers hope that many children will create their own colourful plate gardens for display in the Horticultural Society's tent at the Fete

Top picture, left to right: Ryan Woodward, Henry Crompton-Smith and Laura Blundell. On the left, Elizabeth Partridge and Elliott Rose with George Butler.

CANCER UNIT APPEAL

This year the charity to benefit from Speen Fete, nominated by the WI and supported by the various village organisations, is the new Cancer Unit at Wycombe General Hospital.

There is more and more publicity regarding various cancers but sadly some, due to their site, mean that self-examination is impossible. It is particularly poignant that a local charity is being supported by local people as several residents in this small village are either being treated for cancer, have recovered or are in remission. The adage "Charity Begins at Home" is most appropriate.

Although the new unit was opened in February this year and patients are now being treated here, as with all major fund raising projects, the target wasn't reached before doors were opened. Another £150,000 is still needed for further equipment. Therefore the Fete's contribution will be much appreciated. The new unit named "The Sunrise Cancer Unit" is purpose-built and self-contained and is located on the seventh floor

of WGH, with facilities for receiving chemotherapy and additional rooms for patients to recover in private if suffering from the side effects of treatment. There is an Information and Resource area for patients and relative and also rooms for counselling and talking to specialist staff as well as rooms for complimentary therapies and a children's area.

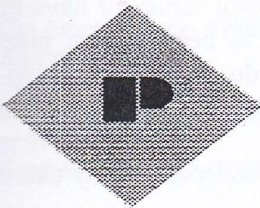
Breast and colo-rectal patients are also seen in private rooms by specialist nurses to discuss their concerns and fittings are conducted with no fear of interruption.

The décor was chosen by the patients to give a calming and relaxing atmosphere.

The Cancer Unit appeal is organised from the Scannerappeal Office at Amersham Hospital and more information can be obtained on 01494 734161.

Later this year it is hoped that Cilla Black, the Scannerappeal patron, will officially open the "Sunrise Unit".

Margaret Hancox



PARTRIDGE & CO.

Chartered Certified Accountants

**The Gables, Market Square, Princes Risborough,
Buckinghamshire, HP27 0AN**

Tel: 01844- 343900; Fax 01844-343903

E-mail: accounts@partridgeandco.i-way.co.uk

Are you fed up dealing with Inland Revenue Self-Assessment Returns?

Why not speak to Richard Partridge and let him provide a Full Tax Return Service for you. We have the market leading professional Tax Return software designed for all types of personal and company tax returns.

As Registered Auditors and Business Advisors, we specialise in providing a highly personal service to owner-managed companies, trades and personal tax clients, covering all aspects of business accounting and taxation.

NB: We have now moved to offices in the Market Square Princes Risborough.

District and County Council News May 2003

The **Quiet lanes & Rural Transport Project** has moved forward with the first phase of public consultation nearing completion. The results of this will be brought to the public in a series of exhibitions planned for June this year. Four exhibitions are planned and will take place in Lacey Green, Princes Risborough, Bledlow Ridge and Ellesborough. The date for the Lacey Green exhibition is planned for the Saturday 7th June at the Millennium Hall which will give everybody a chance to see for themselves the proposals coming from the initial consultation and will allow a further chance for additional comments / suggestions to be made.

Progress on the countywide **Speed Limit Revue** is less advanced. It is now planned that this work will follow on, and build upon the Quiet Lanes study. This means that the work for the Speen area will start in July and be complete by the end of December. I am remain hopeful that, subject to no difficulties being found during public consultation, a start on implementation can still be achieved before the end of the financial year.

With regard to **local roads** I am pressing for action with the Highway Engineers to have work carried out to repair and strengthen Slad Lane at the Main Road end where edges have been undercut and the surface deteriorated, the Hampden Road junction in Hampden where again the edges have been lost through undercutting and the entrance to Coleheath Bottom from the Hampden Road again damaged through surface water run-off.

The problem of abandoned/torched cars remains with us. I have asked for yet another car to be removed from Bryants Bottom Lane and will press for this to be done.

The position with **Central Railway** has not changed for some time and remains that ministers will not make a decision until they have received further information on key areas from Central Railway. These include some of the strategic issues about the management of the rail network and the effect on existing rail ser-

vices, technical and commercial issues and the potential impact on the environment - such as disruption during construction, routing through environmentally sensitive landscape and the siting of terminals". In the meantime dealing in CR shares remain suspended, by agreement with the Company.

Progress for **Handy Cross** continues to be made. The Highway Agency met with other relevant agencies in May and confirmed that the timetable for the junction improvement works remains on schedule with a start planned by the beginning of 2004 with completion programmed for summer 2006. The next step, by early June, will be the appointment of contractors for the detailed design and construction of the Works.

I am pleased to say that the County Council has again agreed to continue with the **Community Leaders Fund**. This means that funds to help local projects, similar to that granted to the Royal Mead Allotments to help pay for a water supply, will be available this year. My fund is for about £2,250 so if you do have a community project in need of 'Top-Up' funding then please let me contact me with the details.

If you do have any concerns regarding District or County Council issues or have noticed areas where action is needed then please let me know and I will do what I can to help.

*Paul Rogerson
District & County Councillor*

SURGICAL CHIROPODIST

Telephone
NAPHILL (01494) 562569

Mrs Rosemary Stone MSSch MBChA

SPEEN & NORTH DEAN NEWS - SUMMER QUIZ

- 1 In Mathematics what name is given to an angle between 90 and 180 degrees
- 2 Jockey Brian Fletcher twice won the Grand National on horses with Red in their name. The first was Red Rum - what was the other
- 3 In which country would you live if your native tongue were Magyar
- 4 George Fox was the founder of which global religious movement
- 5 What type of household device was invented by Sunderland-born Joseph Swan (1828- 1914) and patented in 1860.
- 6 Name the sequel to the TV Comedy series Porridge
- 7 Who was the youngest of the three Bronte sisters
- 8 Which is the largest of the four instruments that make up the brass section of an orchestra
- 9 In which decade did a man-made object first appear on the surface of the moon
- 10 Which King of England reputedly lost the / his Crown jewels in The Wash
- 11 The musical play and film Half a Sixpence is based upon which book by H G Wells
- 12 In the book *Treasure Island* what was the name of the ship captained by Captain Smollet
- 13 Which well known TV and film character do you associate with the phrase "Live long and prosper"
- 14 Which Organisation's motto is " Let Nation speak peace unto Nation"
- 15 In Pop music, to where did The Monkees take the last train
- 16 Which was the World's first anti-biotic
- 17 The Arms of Great Britain are supported by a Lion and a Unicorn. Which two creatures support the arms of Australia
- 18 Who was the last Liberal Prime Minister of Great Britain
- 19 If you have a double X chromosome are you male or female
- 20 Actress/ MP Glenda Jackson has twice received the Best Actress Oscar. The first was for *Women in Love* but for what film did she receive the second

Quiz set by Geoff Hayward-Smith. Answers on page 15

PLANNING NEWS

Hughenden Parish Council

Recommended for approval:

Construction of conservatory to rear at Cherry Orchard House, Speen Rd, North Dean

Recommended for refusal:

Single storey extension and rear dormer extension at Havendale, Speen Rd, North Dean

THE OLD PLOW BISTRO AND RESTAURANT AT SPEEN

SUMMER PRIX FIXE MENU

Barberry duck liver terrine with fig chutney

Or

Home-made gravadlax with crab rouille

Or

Spanish cured loin of pork with home-made pickles

Or

Chilled gazpacho Andaluz with crouton

Grilled escalope of chicken with Goanese curry sauce,
basmati rice and onion sambal

Or

Prawn and dill fish cake with lemon butter sauce
and roast Provencale tomatoes

Or

English lambs' kidneys, smoked bacon, devilled sauce

Or

Hot goats' cheese, stilton, leek and wild mushroom tart with lemon butter sauce

£9.95 for 2 courses

AVAILABLE IN THE BISTRO

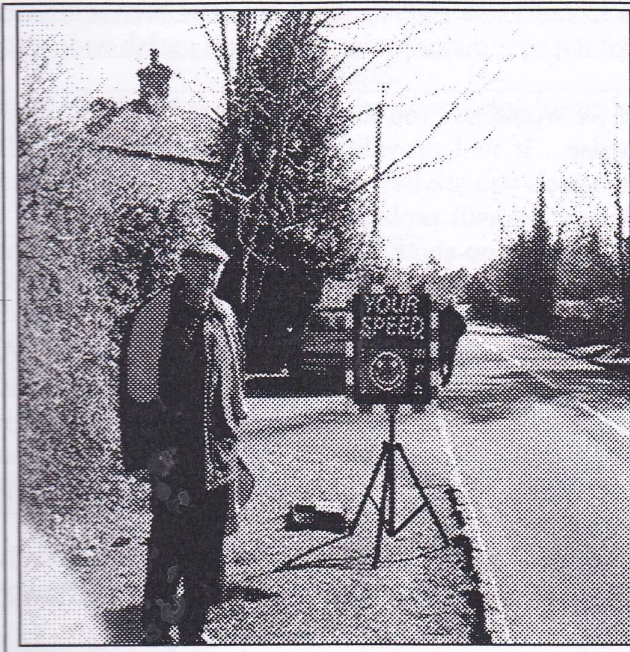
Tuesday to Friday lunch and dinner and Sunday lunch too!

This special menu can be requested when making a booking and is available in the garden, weather permitting!

.Dishes on the menu are non-transferable and are subject to availability.

The Old Plow Bistro and Restaurant, Flowers Bottom, Speen. For reservations telephone
01494 488300

HAVE YOU SEEN SID ?



Don and SID in Hampden Road

During April, the Parish Council loaned a Traffic Speed Indicating Device (S.I.D) for a few days to monitor traffic speeds within the Parish. This mainly involved the roads through Lacey Green but for a couple of days the device came along to Speen.

It was used in three locations - outside Speen Stores, down Chapel Hill between Abbotswood and the Chapel and along Hampden Road just past the Woodview Drive turning.

The device gives the exact speed of a vehicle when approaching approximately 50 yards away, which is before the motorist realises what the board is indicating. The speed is shown and can be read by the motorist as he or she draws near. For the last few yards before the vehicle passes the device a smiling face appears if the vehicle is within the set limit and a miserable face

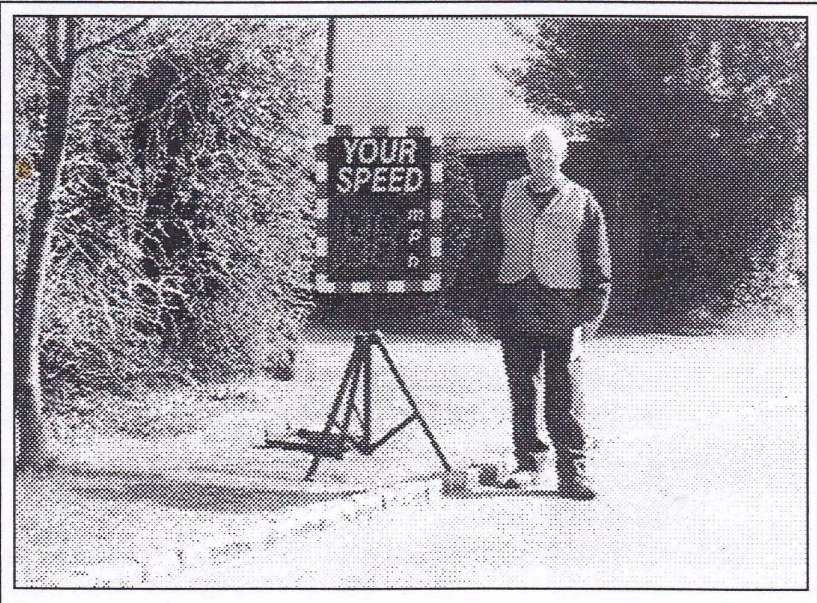
appears if the limit is exceeded.

On Chapel Hill, in recordings taken over 2 hours, 1 vehicle in 11 was ever the limit; the maximum recorded was 42 m.p.h by a motorcycle.

In front of the shop no-one was recorded as over the limit. The Hampden Road junction and parked cars obviously restricted speeds considerably. Along Hampden Road during a three hour spell a total of 124 vehicles passed. Of these 29 were over 30 m.p.h; 8 were over 40 m.p.h and the maximum recorded was 49 m.p.h (by a 4 x 4).

Last year the Parish Council were promised an extension of the speed limit along Hampden Road past Coleheath Bottom; we still await County Council action on that item. Meanwhile of course any reduction of speeds through the village can only be made either with physical obstructions or by action by the Police. I would like to thank George Butler and Christine Oliver for their help in monitoring the device.

Don White



Reg Butler on duty with SID

Community Plan Update May 2003

We have made limited progress since the last report, largely because we have been endeavouring to get the project infrastructure in place. Our key need was to obtain adequate funding, and our application for a Countryside Agency grant has now been submitted. Once the funds are available we can take the next major move, which is a parish wide questionnaire to every household.

The questionnaire is quite long but we would ask you to take the trouble to complete it and ensure that we have a good response. It will provide a very clear picture of your wishes with regard to the community in which you are living, on the basis of which we can develop a plan to satisfy your aspirations. We will probably deliver the questionnaire to you by hand and arrange to collect it back from you about a week later. Quite a lot of work for a handful of people but we believe worth it to ensure a good response rate. *In this connection, we would welcome offers of help from anyone prepared to assist with this job.*

The open meeting held in Speen on 17 March was attended by twenty-two people. Although this was a slightly disappointing turn out, it was successful, and we had a lively meeting with lots of issues being raised, including roughly twelve new ones relating specifically to Speen. (overlapping responses makes for a slight imprecision). One resident, who was unable to attend, took the trouble to send written suggestions which have been included. A complete list of the issues is attached below.

We also asked people what they liked about the village, and had some very positive replies - clearly a pleasant place to live, with good community spirit and plenty of activities. Not surprisingly, you wanted to keep it that way.

We have two sub-groups set up looking respectively at the missing Lacey Green Post Office and the possible relocation of the Windmill Under 5's to the Lacey Green Sports Club. Nothing particular to report so far on these issues. came to the open meeting in Speen on 17 March, and raised a large number of issues, which we are still digesting.

There have been changes to the Steering Group, which now consists of: Tony Molesworth (Chairman), Paul Rogerson (Treasurer), Barry Titchen, Linda Gaffin, Jane Oakford, Rachel Panter (or substitute), Jon Rolph, and David Howarth.

Successful development of the plan will depend almost entirely on the willingness of parish residents to support it. That means working together as a community and not doing your own thing exclusively. Whilst some things can be done by the Parish Council, it does in fact have quite limited powers, and for the Community Plan, it has delegated the job to the Plan Steering Group. But to be effective, we do need more willing hands.

We would appeal for volunteers to do the following:

Become a member of the Steering Group (and we could do with a secretary!).

Join one or more sub-groups (these have the job of investigating specific issues and recommending appropriate solutions) - how about the Broadband situation?

One off jobs e.g. helping to distribute and collect the questionnaire.

Be a specialist adviser - we could do with expertise in legal matters, accountancy, building works, architecture, at least. (Note - of course, we can buy all these services, at a price - but that simply uses up hard won funds, which we need for other purposes).

For more information, contact Tony Molesworth (01844 344975) or Paul Rogerson (01494 488315)

See facing page for results of Speen meeting

LACEY GREEN PARISH COMMUNITY PLAN - SPEEN ISSUES 17 MARCH 2003

	No	Action to date or planned
ECONOMIC		
1 Would like Shop/Post Office in Lacey Green (bring 'centre back to community)	1	Inform Post Office of community concern, with request for agreement to set up part-time sub-office.
2 Develop tourism e.g. B&B facilities	1	
3 Provide Broadband Internet access for Speen	4	
4 Provide more 'buses - especially for elderly & those without cars	1	
5 Support rural economy - use local products, shop, pub etc.	1	
5 Encourage home working - less traffic & stress	1	
7 More affordable housing, providing wider social mix & range of ages	2	
SOCIAL		
1 No guaranteed places at local school for children living in Parish, especially those attending school in Speen to age 7.	2	Inform all involved parties (BCC etc) of community concern; in depth investigation of possible long term solutions
2 Need facilities for young people 12 - 20 - possibly a youth club for which village hall or sports pavilion could be used	2	
3 A course in customer service for William IV	1	
4 Playing field & village hall need maintenance & improvement	1	
5 Parish Council to continue support for Christmas Tree	1	PC to consider
ENVIRONMENT		
1 Speeding traffic in Speen, including road to North Dean - a variety of different comments on this theme	14	Parish transportation policy statement (PTPS) issued to BCC includes and extension to area covered by speed limit.
2 Fly-tipping & rubbish dumping - get rid of height restriction at tips	4	
3 Footpaths to be kept open & have easy to negotiate stiles	2	
4 Horse warning signs along Pink road - also for road runners	2	
5 Parking on grass verges - dangerous, damaging & possibly illegal	1	
6 Slippery road surface especially Chapel Hill - dangerous for horses	1	
7 Noise nuisance from SUVs (4X4's)	2	
8 Provide footpath at side of Chapel Hill	1	
9 Bridleways to stop use of lanes by horse riders	1	
10 Unsightly car repairs at farm heading out of Speen (Hampden Road)	1	
11 Not enough recycling especially of plastics	1	
12 Letting off fireworks for 2 week period around 5 November & at Christmas/New Year	1	

The above includes issues identified at the open meeting on 17.3.03 plus two others separately from one Speen resident unable to attend the meeting.

Tony Molesworth



Letters to the Editor

Dear Editor,

We were interested in the report about the new singles group in Speen. It is nice to hear of any new group in the Village and we wish them all well in this new venture.

We would also like to take this opportunity to remind people that the WI also exists to offer support, fun and friendship among the ladies of the village be they single, divorced, married or with a partner. You will have already read of our regular monthly meetings with a range of excellent speakers in the reports in this magazine. We also organise outings, rambles, bridge drives and other social events.

We would encourage those of you seeking friendship and new interests to come and join us. You do not need to be able to cook, nor to make jam and certainly do not need to be able to sing Jerusalem.

Just come along to any of our meetings in the Village Hall on the first Thursday every month at 7.45pm. The What's On page will tell you what speaker to expect and we can assure you of a very warm welcome.

Don't be shy - come and give us a try.

Jean Morris
for Speen WI Committee

WE'VE MOVED!



B. A. HOGG (Motor Body Repairs) Ltd.

Unit 3
Fairview Industrial Estate
Kings Road
High Wycombe
Bucks HP11 1RY.

Oh Yez! Oh Yez! What Can We Do for You?

- ◇ Free estimates, at any location.
- ◇ Free collection and delivery service.
- ◇ Easy access and ample parking.
- ◇ Account facility available
- ◇ Fast & friendly service.
- ◇ Return to home service.
- ◇ Company & fleet service.

Interested?

Ring: 01494 512020 (3 lines)



**ZURICH
INSURANCE**

ESTABLISHED 1972

THE INSURANCE SERVICE

churchill



Speen Festival

4th to 13th September

2003

This year's Speen Festival takes place in September and, like the inaugural 2001 Festival, includes an exciting array of events for all tastes and all ages

5th & 6th September - **THE PIED PIPER OF SPEEN**

An original show written by Rob Lenko, songs by Martin Stockley, performed in the Marquee by a cast of villagers. Great entertainment for the family - a must for the children or grandchildren!

6th & 7th September - **ART & PHOTOGRAPHY EXHIBITION**

Paintings, photographs and craft work by local people displayed in the Village Hall all weekend. Come and see just how much talent there is around you! Free entry.

7th September - **SPEEN ANTIQUES DAY**

Browse among the stalls, buy or sell. Bring along your own antiques and collectables for valuation. Watch antiques restoration. Buy or sell at the auction. A fascinating day in the Marquee - free entry.

9th September - **THE WILDLIFE OF SPEEN & NORTH DEAN**

Superb *new* slide-show and talk on the colourful and varied wildlife to be seen in our area. Fresh photography by Peter Symonds, plus a display of a few of the less common creatures (stuffed!). In the Village Hall.

10th September - **THE COLE PORTER STORY**

Martin Hart and friends present another terrific evening of jazz in the Marquee. This time the subject is the legendary Cole Porter, composer of the hit shows *Anything Goes*, *Kiss Me Kate*, *High Society* and many others, and a host of other fabulous songs.

12th September - **BBC ANY QUESTIONS**

This perennial Radio 4 favourite visits Speen for a live outside broadcast. Jonathan Dimbleby chairs in the Marquee.

13th September - **PIRATES**

A swashbuckling, timber-shivering children's theatre show by Teatro Unfortunato in the Marquee on Saturday morning. For 3 to 10 year olds.

13th September - **FESTIVAL FINALE CONCERT and supper**

A kaleidoscope of music including Speen Choir, a brass ensemble, the Rubbra String Quartet, old Bucks folk songs, the harp, the violin, barbershop, and much, much else beside - *plus* a 3 course supper! Licensed bar available. In the Marquee.

If you would like to help in any way with the organisation of the Festival, please contact the Field Organiser, John Holmes, on 488420

TO OBTAIN TICKETS, CONTACT THE BOX OFFICE ON 01494 488637

North Dean Furniture Restoration

Workshop: 01494 563860 (Day Time)

Mobile: 07770 747470



The complete restoration service for antique, reproduction or modern furniture.

**French Polishing, Damage Repair, Re-Carving
Re-Veneering, Upholstery, Marquetry**



**Upper North Dean Farm, North Dean
High Wycombe, Bucks. HP14 4NJ**



HO! HO! HO?

Geoff Smith doesn't think it's too soon to be thinking about Christmas and has already planned a Christmas Quiz in the King William IV on Thursday December 18th. It is likely to include a special fixed price supper menu and, as with all the regular Quiz evenings, the £1 entry fee will go to Speen Supporters Group in aid of local hospices. It promises to be great fun (as it was last Christmas), so make a date in your diary - more details available later.

Quiz answers

- 1 Obtuse
- 2 Red Alligator
- 3 Hungary
- 4 The Quakers
- 5 The light bulb (a carbon filament incandescent operating in a partial vacuum)
- 6 Going Straight
- 7 Anne
- 8 Tuba
- 9 1950's (A Russian craft, Lunik 2 crash landed in 1959)
- 10 King John - allegedly
- 11 Kipps
- 12 The Hispaniola
- 13 Mister Spock from Star Trek
- 14 BBC
- 15 Clarkesville
- 16 Penicillin
- 17 Kangaroo and Emu
- 18 David Lloyd George (Prime Minister 1916-1922)
- 19 Female; males have X/Y chromosomes
- 20 A Touch of Class

SPEEN STORES

Opening Hours:

Monday to Friday : 6:45am to 7:00pm

Saturday : 8:00am to 5:00pm

Sunday : 9:00am to 1:00pm

Post Office:

Tuesday & Thursday : 9:00am to 5:30pm

Saturday : 9:00am to 2:00pm

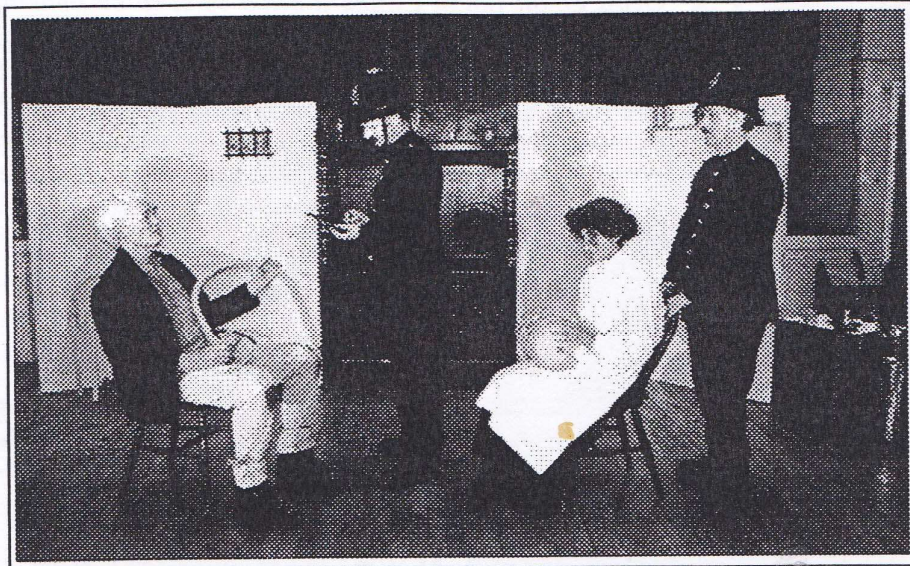
Groceries, wines & spirits, fresh fruit & vegetables, delicatessen, newspapers and much more

Delicious bread, french sticks, croissants, cakes, pain au chocolat, pasties, pies etc. baked daily on the premises. Orders taken 7 days a week.

Telephone: 01494 488258

SPEEN SUPPORTERS GROUP

"POT LUCK" raises £1,700 for hospices



The "Pot Luck" cast: l to r Martin Stockley, Jeremy Symondson, Judy Redrup, Wynne Davies

Audiences were treated to an evening of pure Buckinghamshire from "The New Buckinghamshire Players" and friends at Naphill Village Hall in March in aid of the Speen Supporters Group. The event was entitled "Pot Luck" after the short farce of that name written nearly 100 years ago in Naphill by the enigmatic Gertrude Robins, a young and famous actress who was living in Moseley Lodge at the time. When performed in 1910 by local villagers, the play attracted the patronage of such as G K Chesterton, John Masefield and Jerome K Jerome and was previewed by almost all the national press. This time, there was not quite the same exalted attention, but nevertheless local interest was such that the performers had to extend the run to three nights from the original two. The play was directed by Marjorie Stockley and told a lighthearted tale of poaching and pompous policemen. Also on offer were some wonderfully whimsical poems from Stuart King, delivered with humour and feeling in his native Holmer Green accent, and a selection of little heard old Bucks folk-songs from Phil Howell. In between these various entertainments a Bucks meal of Bacon Badger and Cherry Pie was delivered to the tables. The verdict from everyone seemed to be that it had been a truly enjoyable evening. It is very gratifying to report that as a result

over £1,700 was raised for five local hospices.

Martin Stockley

Hughenden Builders

Established 22 years

All Building Works Undertaken

- ◆ Extensions.
- ◆ Alterations.
- ◆ Loft Conversions.
- ◆ Roofing – all types.
- ◆ Drives, Block paving, Tarmac etc.
- ◆ Patios, Walls, Garden landscaping.
- ◆ Plumbing, Plastering, Carpentry.

Planning Service.

Clear & Concise Plans

Single Storey £150.00

Two Storey £300.00

(plus council fees)

Free detailed estimate with drawing.

Planning fees returned if tender accepted.

**171 Main Road
Naphill**

**Tel: 01494 5629
01494 4380**

THE GARAGE THAT COMES TO YOU
All areas within 35 miles of High Wycombe

VEHICLE TECHNICIANS

AUTOS - MOBILE

ESTABLISHED 1971

**SERVICING
REPAIRS
BRAKES
CLUTCHES
FUEL INJECTION
ELECTRONIC IGNITION**

Most makes serviced, British & Foreign

**NO
CALL OUT
CHARGES**

Call
Bob Wheeler
or
01 494 564090
in North Dean
07836 673441

PERSONAL, COMPETENT AND FRIENDLY SERVICE

I am now based in NORTH DEAN and am probably one of the best equipped MOBILE services in existence. 30 years service to the surrounding area has given me a wealth of knowledge and keeps me abreast of all technological advances. I have up to date diagnostic and tuning equipment to cope with almost all cars and light commercial vehicles. Another benefit is, I COME to YOU, so you don't need to leave home for your servicing or repairs. No other garage is closer to you. If you wish, your car can be serviced or repaired at another Location, e.g. - at work (if your employer is agreeable).

I offer a Personal, Friendly and Competent service to the highest standards.

Why not call today and book your next service?

VILLAGE VOICES - WHATS GOING ON?

Despite pleas via two articles in this magazine, the speed of vehicles through our villages has not decreased, particularly in North Dean around the village hall area. In fact, if anything, it gets worse. What does it take to get these 'drivers' (I use the term loosely) to slow down and respect the peace, tranquility and safety that is every villager's right. Their passage at ridiculous speeds through these narrow lanes is not clever and demonstrates an ignorant thoughtlessness that is both dangerous and foolhardy. It's not just peak time traffic on the way to or from work, it happens throughout the day and night. If you drive at speed in these narrow country roads you are out of control and capable of causing a tragic accident in which you, your family or others will be maimed or killed.

Near-collisions are prevalent on a daily basis and destinations are not reached any earlier at these speeds. It's a poor driver who is not aware of their speed at all times so don't let's make excuses about how quiet and comfortable cars are ('Letters', last issue). Drivers have to take responsibility for their driving and make allowances for pedestrians, horses, large vehicles, hidden exits and narrow lanes. Some appear to be oblivious to the fact that they are not the only ones on the road and also that there is always likely to be another vehicle coming in the opposite direction being driven by an equally selfish and irresponsible 'driver'.

It's a proven fact that bad driving costs lives and speed in village environments is bad driving!

Bob Wheeler
North Dean

SR Farm Contract Services

HEDGE CUTTING—FENCING
*
GROUND EXCAVATION WORK
*
PADDOCKS AND LAWNS MOWN
*
GENERAL GARDEN MAINTENANCE
*
LOGS SUPPLIED

Tel. Steve Rogers—01494 562041

Beau Vista, North Dean, High Wycombe HP14 4NH

NEWS FROM NEIGHBOURHOOD WATCH

How to limit junk mail, phone calls and mail, free of charge:

- 1 Unsolicited mail - register with:
Mailing Preference Service
Freepost 22, London W1E 7EZ
Tel: 0207 291 3310
e-mail mps@dma.org.uk
- 2 Unsolicited phone calls - register with:
Telephone Preference Service,
DMA House, 70 Margaret St,
London W1W 8SS
Tel: 0845 070 0707
e-mail tps@dma.org.uk
- 3 Unsolicited e-mails - register through
DMA website:

RICHARD FERGUSON BUILDERS

All building work
undertaken



- ♦ Extensions
- ♦ Renovations
- ♦ Fireplaces
- ♦ Fitted Kitchens
- ♦ Bathrooms
- ♦ Patio's
- ♦ Decorating
- ♦ Electrical work

16 Moseley Road
Naphill
High Wycombe
Bucks., HP14 4SQ.



01494 562954

2003

All the fun of Fete Day for all the family!

Side Shows
Vintage Cars
Chinnor Silver Band
Colouring Competition

Fancy Dress
Grand Draw
Games
Many More Attractions

*Hi Folks!
It's Fete time
again!*



*A Special Year on
Looking After Our Planet*

Speen Fete

2 pm Saturday, 12th July 2003
On the Speen Playing Field



STEVE NEWMAN'S TREE & HEDGE SERVICE

Moonacre, Highwood Bottom, Speen

A friendly, personal service offering advice and free quotations
for all your Arboriculture needs

- Sympathetic tree reshaping
- Tree thinning and reductions
- Felling or dismantling of trees
- Topping of 'out of control' conifers
- Fruit tree pruning
- Tree planting and tree relocation
- Hedge cutting and shaping

We are fully insured and provide a tidy and efficient service

01494 488790

07951 758407

NORTH DEAN VILLAGE HALL SOCIAL ACTIVITIES



Photo by Wing Commander Richard Dauncy

CHARITY LUNCH. A thoroughly enjoyable lunch was held at the Village Hall on March 14th, catered for by Mrs Judy Keen. The occasion was held to support the maintenance of the Hall and the charity Hearing Dogs for Deaf People whose speaker, Ray Smith, gave a most interesting talk. He and his wife Anne brought their dog Noodle with them. Noodle was, of course, the perfect charmer. A profit of £340 was shared between the two charities. Grateful thanks are extended to everyone who contributed so generously to this event, the Bring and Buy Table and the Bar. We plan to resume our lunches in the Autumn.

A PIG ROAST will be held on **Sunday July 13th** at the Village Hall, and this promises to be a very exciting occasion. The tickets are £10 for Adults and £5 for Children under 12 years. Please book your tickets **EARLY**, available from Judy Keen, tele. 01494 562151.

NORTH DEAN VILLAGE FETE will be held on **Saturday August 2nd**, at 2pm. For the benefit of those who have not attended our Fete before, this is a traditional country village Fete with lots of fun for all ages.

Please bring your family and friends along to both of these events.

Celia Dibden

TREATS II

A Tradition of Good Toys!



TREATS II

5-7 Duke Street
Princes Risborough
Bucks. HP27 0AT
Tel: 01844 344354
Fax: 01844 274540

















TREATS II
the greatest selection
of toys in the area!
Scientific & Educational

Speen WI News Report

Our Birthday Party in April was great success and much enjoyed by our own members and our visitors from other Institutes in the area. We were in a much more serious mood the following month when we discussed the Resolutions for the National Annual Meeting at the Albert Hall in June. There was a great deal of discussion about the way in which improvements to the care of the elderly might be achieved, how to encourage children to have a much healthier diet and the future apprenticeship needs of industry, services and commerce. Our two members attending the AGM will have an interesting time when they hear the full discussions there.

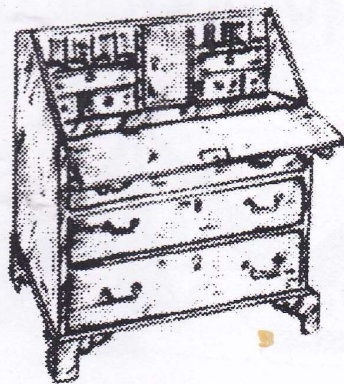
The Bridge Drive was again very successful and we are now planning for a

County Ramble in June and the fete in July.

During the coming months we shall be having a Beauty Demonstration, a talk on Crystal Healing and an insight into the history of Pub Signs. We are also continuing with our daytime and evening rambles. In August there is to be a visit to Bletchley Park, home of the Enigma project museum which will be open to friends and partners as well as members. Details of all these events are always available from our Secretary, Barbara Collett.

The programme planning for 2004 is already underway so we can be sure of continuing with our high standard of speakers and demonstrators.

Jean Morris



Antique Restoration And French Polishing

Complete Range of

Quality Restoration Work

Undertaken

Ian Gray

Work: 01494 488560

Home: 01494 488023

www.iangrayrestoration.co.uk

BIN IT OR RECYCLE IT!

These days there are many opportunities to recycle our second hand goods. No longer do we have to take old clothes, garden equipment etc., to the local council dump. There are plenty of council recycling centres, local charities and self help groups looking to us to provide them with invaluable material which in turn gives us an outlet for our unwanted goods and helps us to do our bit for the environment too. But where do you start? Listed below are some useful telephone numbers to start you off.

Shoes/Clothes - children's and adults' clean and laundered can be collected from your home by Kate or Olivia. Telephone them on 01494 488262/766. Bric-a-brac, children's toys and bicycles - same telephone numbers as above.

Plastic, glass, cans, paper, textiles - can be disposed off at local recycling centres. Telephone Wycombe District Hotline for further information 01494 421454.

Manual garden tools, manual sewing machines, knitting machines and typewriters are urgently needed by Workaid in Amersham - telephone number 01494 765506.

More information will be published at a later date. In the meantime if you know of other recycling efforts going on in or around our community that you think should be added to this list, please contact Kate or Olivia on the above telephone numbers.



Reliable, Friendly Service

Emergency Spares and Repairs

Drains, Leaks, Loos, Taps

Water Softeners, Tanks

RePlumbing, Bathrooms, Kitchens

Problems investigated, alternative
solutions proposed and the best fit to
your requirements carried out

Based in Upper North Dean

Paul's Plumbing
07786 175123

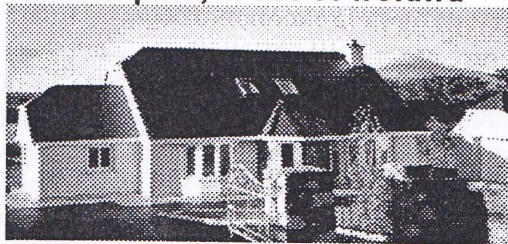
Local to Naphill, Walters Ash
Lacey Green, Speen, Prestwood,
Hughenden, North Dean

No Daytime Call-out Fee

Free Estimates

Paul Newman Ltd. 01494 565573

Holiday Home Westport, West of Ireland



From only £300 p.w.

For brochure or bookings contact Marie:
Tel: 01494 718015

Ideal holiday location
for Walking, Golf,
Sailing, Beaches,
Fishing, Bird Watching.

Excellent Restaurants,
Pubs, Traditional Irish
Music and Shops in
Westport.

Luxury 3 Bedroom
Self Catering Holiday
Home
5 miles from Westport on
Clew Bay.

Spacious Kitchen and
Living areas Sleeps 6:
1 Double & 2 x Twin
Family Bathroom and
Ensuite
(Sorry No Pets)

More details on the Web:
www.roscahill.com

Speen Festival 4th to 13th September 2003

ARTISTS, PHOTOGRAPHERS - to
play your work in the Festival Art & P
tography exhibition (September 6th -
contact Glenn Hart on 488528

ANTIQUES, COLLECTABLES etc -
have them valued or sold at auction
Speen Antiques Day (7th September), con

Speen & North Dean Golf Day

27 golfers turned out on May 15th at
Hazlemere Golf Club for the twice-annual
match between Speen and North Dean. The
competition was held on a glorious sunny
day and the winners of the various competi-
tions were:

Texas Scramble - Tim Cooke, Bill Groves,
Arvid Halvorsen and Tom Whitely.

Individual Stableford winner - Tony Re-
drup. Runner-up on count back - Bob Stup-
ples

Longest drive - Tim Cooke

Nearest the pin - David Kemp

Team competition - North Dean 203,
Speen 200.

The next competition for the challenge
shield has been arranged for Thursday 18th
September at Princes Risborough Golf
Club. Please note this date for your diary.

Any new golfer wishing to compete
would be most welcome and should contact
either Bill Groves on 488180 or John
Rogers on 562041.

Bill Groves

Revival COMPANY

The Re-Upholstery Experts

Free Home Estimates

Fabrics by the Thousand

Fast and Efficient Service



Telephone: (01844) 278759

The Old Stores, The Green, Great Milton,
Oxford, OX44 7NT

Member: Association of Master Upholsterers

NEWS FROM NORTH DEAN VILLAGE **HALL**

Our April AGM saw the approval of our new working practices. Instead of just one main committee we now also have four sub committees dedicated to specific areas of our needs. Social/Fundraising, Annual Fete, Building & Development and Family (responsible for looking after events for the younger members of the village). There are also two very important people in the organisation who are responsible for Bookings and Housekeeping - Megan Chinn and Pat Rogers, both jobs so very important in the smooth running of the hall. The main committee oversees general operations and is ultimately responsible for agreeing budgets and ensuring that the sub committees work within the Constitution. The village hall trustees, being separate from the main committee, ensure that the well-being of the hall and its income is being used in a proper manner according to Charity Commission regulations. These new ways of working mean that the main committee meets quarterly and no longer has to bear the burden of programming and ensuring every event comes to fruition.

The plea for help from residents of North Dean has resulted in results above and beyond our expectations and, once again, I would like to thank all those who have offered help and those who have already put in so much hard work into the increasing success of the new programme. We still need help with urgent work on future projects to refurbish our village hall. I hope that some of you who have skills we need may be able to offer us some of your very valuable time keep the centre of our little community running efficiently.

The outside of the hall desperately needs attention, so perhaps when we call for help you would consider an hour or two of help. The more of you that can lend a

hand the easier it becomes and the fewer hours each person has to do. We have already decorated the inside of the hall and work on the kitchen is underway. New wall cupboards have been installed and a new water heater is about to be installed to replace the ageing water boiler that has given stirring service for so many years. Once this is completed, redecoration can be undertaken and the kitchen will then conform to the current Health and Safety standards.

We also have to carry out alterations to allow those with disabilities to have easier access to the hall and its facilities. Of course, this involves massive expenditure and despite countless attempts to attract funding from The National Lottery, we need to raise a lot of money ourselves. If anyone can support some of our fund raising activities they will, at the same time, have an enjoyable experience and will find a friendly welcome in North Dean.

The car park needs extending and resurfacing to comply with new legal requirements, but that's another story..... I'll bore you with that at a later date.

Bob Wheeler

FIRST AIDERS ***required***

to be on hand during Speen Festival 2003, 4th to 13th September. If you are a qualified First Aider and are available to attend any of the Festival events (see page 13), please contact John Holmes on 01494 488420

A Review of Events in North Dean

The autumn programme of events organised by the Village Hall Committee started with a Car Treasure Hunt in September. We were guided along the highways and byeways, searching for clues, avoiding the red herrings and enjoying the beautiful countryside until the trail brought us back to the Hall where a cheese and wine supper was provided.

October saw a new venture, a 'Pub Night'. A bar licence was obtained and a pub atmosphere was created, including dartboard, dominoes and cards. Enjoyed by all who ventured out but this 'pub' definitely needed a few more customers.

Under the expert tutelage of Helen Verd-court in November we tasted wines from Chile. Helen presented both red and white through a wide range of prices, ending the evening in a rosy glow and tucking in to an excellent cheeseboard.

Later in November we had an interactive, 'hands-on' Race Night, no films but still with plenty of noise. This was an enjoyable and profitable event, giving a welcome boost to Hall funds.

The festive season was celebrated with the Committee Dinner to which guests were invited, and also the Village Gathering, with games and a bran tub for the children, chat and mulled wine for the grown-ups, and carols for all.

The New Year was welcomed with a lunch for the 'Young at Heart', alias the seniors, who enjoyed a delicious meal followed by a Dave King quiz, which proved we may be young at heart, but none too bright in the head.

Lilian Cash

HOMEOPATHY BY APPOINTMENT

Qualified Homeopath (LCH)

For confidential home appointments

01494 488119

NORTH DEAN PIG ROAST

Sunday 13th July ... 12 Noon onwards.

Tickets are now available for this exciting event, so please purchase them as soon as possible to avoid disappointment. An excellent way to relax after the exhaustion of Speen Fete the day before - let other people do all the work. Bring your Family and Friends to **North Dean Village Green** where an excellent lunch will be 'spitting away'. Superb salads and deserts will accompany the delicious pork. There will be Games for the Children.

Tickets (£10 Adults, £5 Children) are available from Judy Keen, telephone no: 01494 562151.

**Mark
Wengler**
Project
Management



**Mark
Wengler
Project
Management**

Design Service
Extensions & New Build
Specialist Refurbishment

Wayside Cottage
Hampden Road
Speen
Princes Risborough
Bucks. HP27 0RU.

Telephone: 01 494 488025

WILDLIFE WATCH by PETER SYMONDS

Since my last report winter has come and gone, and the spring is giving way to early summer.

Traditional winter visitors to the village included Bramblings in November and Siskins recorded on nut feeders in December. Generally Siskins tend to remain in the woodlands, resorting to garden bird tables in January/February. As the winter hardened into early January, Fieldfares and Thrushes arrived in the village orchards and gardens as food became scarce in the local hedgerows. Within our front garden a Mistle Thrush establishes a territory around three rowan trees which are laden with berries. It attacks any Blackbirds, Thrushes or Fieldfares approaching the trees and also harasses Bullfinches and Goldfinches trying to feed on the berries. As the temperatures tumble, more and more birds can be attracted to garden bird tables. Birds such as Blackcaps, which used to be regarded as summer visitors, now over-winter in the South of England and this winter, on almost every occasion when the temperature dropped to below freezing point, a Blackcap appeared in our front garden. A male concentrated on eating berries on our rowan trees, nimbly eluding the attention of the Mistle Thrush, while I also recorded a female Blackcap for the first time, feeding on peanuts in a nut holder. Roger Hussey reported having a Grey Wagtail (which is yellow and grey) in his garden during the winter.

Within the local woods, our resident bird population is boosted by birds migrating from Scandinavia including Thrushes, Jays and Woodcock. Woodcock are extremely difficult birds to watch in the wild with only rare sightings as they zigzag away in flight at high speed, having been disturbed. I did receive a report that 8 Woodcock were put up from a local wood during a shoot, with 3 evidently shot in the process. Among the winter birds in village gardens again this year were a party of about 15 Crossbills which would regularly descend onto the spruce trees in the woods around the village and also some of the gardens in Abbotswood.

Among our local animals, several Badgers have been lost in road accidents on Chapel Hill

in Speen and on the narrow section of road to North Dean. A dead Weasel was delivered to Christine and John Oliver by their cat in December. Despite their tiny size, Weasels are determined fighters which many cats avoid. Both in the woods in Speen and on the hills towards Bryants Bottom, a significant number of black Rabbits have been noted. I have seen Brown Rats within our woods on several occasions recently, and I received a report of a family of 5 or 6 drinking at a roadside water leak on the edge of the village in March.

As usual, large numbers of Frogs have bred in the local ponds. Whilst breeding activity was first noted at the beginning of February, a further cold snap resulted in spawning being delayed until early March. Subsequently Toads and Smooth and Palmate Newts have been noted in local breeding ponds.

Red Kites are still seen regularly over the village. I received an interesting report of one landing in a back garden within a matter of feet of boys playing football. It was not clear as to what the Kite might have seen that had caused it to dive and land in these circumstances. It is interesting how the local populations of birds of prey have changed over recent years. The growth in the number of Red Kites is one example. In previous reports I have mentioned individual sightings of Buzzards, but they too are now present throughout South Buckinghamshire in significantly larger numbers. I have had sightings outside the village on several occasions of up to 3 Buzzards together and, within our own area, a pair has been noted regularly - they may even be breeding. Other changes in population suggest that many winter visitors are also extending their ranges and staying further South for longer. A Siskin was still present in our garden on April 23rd and I had a report from Dick Seekins of 8 Crossbills over the village tennis court in mid May.

The local bird population is now busy incubating eggs and feeding young and hopefully there will be news of successes in the next edition. Please let me know of any interesting records.

Peter Symonds - tel: 01494 488016

News from Speen Baptist Church

Andy writes:

The summer – like the deadline for ND&S - seems to have arrived before I was ready for it! It seems only a short time ago that we were celebrating Easter. Remember the glorious sunshine of Good Friday? About 50 of us – young and old alike - were out in it for our ramble down to North Dean and up Pigots Hill back to Speen.

'Breakfast with friends and ...' had a 'health' theme recently. On 22nd March Dr Tony Males, a GP working in Cambridge shared with the men about his work and the pressures involved in providing GP services today.

Then on May 17th over 50 ladies crowded into Speen Village Hall to enjoy a breakfast prepared by the men and hear locally born Liz Wicks who shared two stories of receiving physical healing from Jesus. The first occasion was when her beautician prayed for her, and this brought Liz to faith in Jesus. The second equally moving story was of the healing of her young daughter. A very thought provoking morning!

The 'Top Tén' Songs of Praise & Tea for Senior & Retired Citizens on April 27th was very well attended with over 40 of our more experienced fellow villagers being waited on by some of the youngest members of the community! We may have missed sending invitations to some folk – so if you would like to come the Harvest event on September 28th, please contact me on 488758.

Happening during the Autumn:

20th Sept: Men's Breakfast - 'A City Story'
With City Worker Ian Smith

28th Sept: Songs of Praise & Tea for Senior & Retired Citizens

7th Nov: Ladies Breakfast – 'A Riding Story'
with Tracy Elliot-Reep (*who this summer is riding the length of Britain in aid of Riding for the Disabled*)

Summary of Weekly Church Activities

Sundays: 10:30am Worship for all ages
incl. Creche, Sunday School for 3's-12's and Teens discussion group.
12:00 Fair Trade Stall in church hall (2nd Sunday in month).
6:00pm Music rehearsal (fortnightly)
9:00am & 12:00am Meetings for Prayer at homes in the community
8:00 pm Evening Home Group at a home in the community
Mon: 10:00-11:30am Daytime Home Group - Chinyssnook, North Dean
10:00-11:30am "Time Out" for Mums at the church
8:00pm Post Alpha Course
8:00 pm Evening Home Group at a home in the community
Weds: 7:00 pm YAC+ at the church
5:30pm Worship Group (fortnightly)
Thurs:
Fri:

You are invited to ...

An Alpha Supper

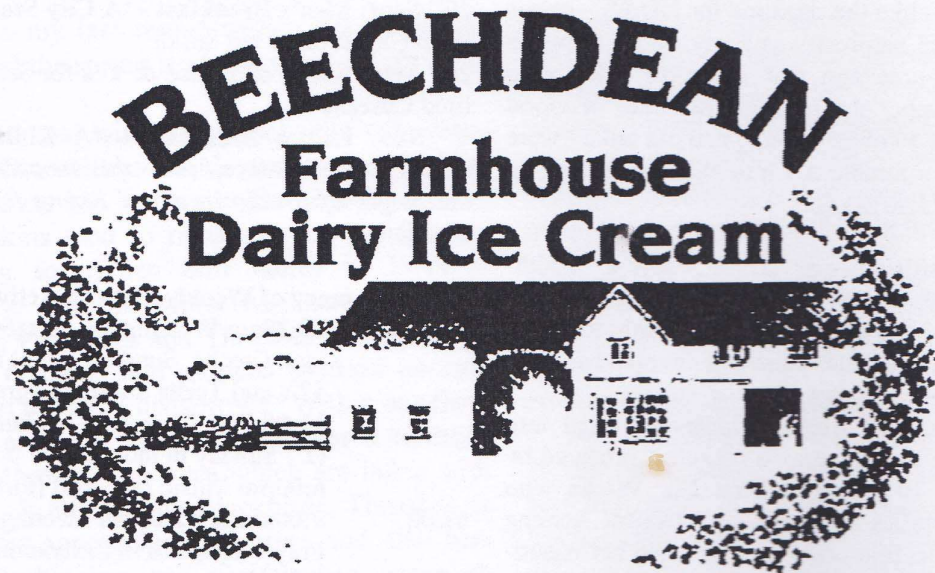
**7:45pm Wednesday 24th Sept
at Speen Village Hall**

RSVP Andy Gower, Tel 488758.



Alpha is a discussion based course which provides the opportunity to ask our difficult questions about life and whether it has a purpose. It starts with an introductory Supper - which gives us the chance to see if the course would suit us.





**Come to the farm and view
our range of delicious
farmhouse products
You will be amazed
at the selection.**

**available from
Beechdean Dairies,
Old House Farm, North Dean.
Open normal office hours
Monday to Friday**

**Tel : 01494 563980
www.beechdean.co.uk**

Make a resolution to enjoy life more... Here's how...

No matter what your circumstances there are times in all our lives when we need help and support, whether as a parent with young children, recovering from a stay in hospital, or just entering your golden years.

Nowadays there seems to be a wide variety of care agencies on the market. But finding the right one can prove daunting and frustrating.

Carewatch is an agency with a big difference. We listen.

We ask you what you need and only then will we come up with a practical, personal solution to help. We respect the values and beliefs of each individual we support, and respect that it is your home, your lifestyle. It's not our place to dictate how you live your life. It's our job to help you fulfil it.

At Carewatch we provide services to a wide range of individuals in the community, assisting with any personal care needs (such as washing, bathing, toileting), domestic care needs (shopping, cooking, cleaning), help with childcare, relief care for regular carers. Or quite simply, companionship.

If you need some help – Carewatch could well be what you're looking for.

Because we care.

Call Jo or Christine on 01296 625385 for a private, personal discussion of your needs.

Carewatch (Mid Bucks)
Tel: 01296 625385
Email: ccsmidbucks@hotmail.com



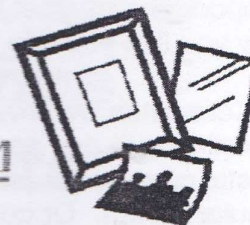
CALLING ALL BUDDING
HORTICULTURALISTS
PHOTOGRAPHERS
COOKS
WINE MAKERS
BEER DISTILLERS
ARTISTS & HANDICRAFTERS



IN
NORTH DEAN & SPEEN
PLEASE SEE THE



NORTH DEAN VILLAGE HALL FETE
COMPETITION
SCHEDULE
&
OFFICIAL ENTRY FORM



TUCKED INSIDE
THIS EDITION
of the
SPEEN & NORTH DEAN NEWS

**Why not try entering your prize cabbage, red wine, photo –
whatever???**

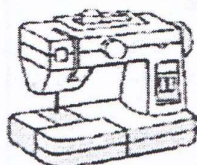
at

North Dean Summer Fete

on

Saturday, 2nd August

It's FREE!



Just your expertise is required!!

Speen Fun Day

Yes, the most keenly awaited annual event known as Speen Fun Day was once again upon us. With all the local roads and lanes bedecked in team colours in the week leading up to the day and the marquee erected by the ever faithful erection team, the weekend's activities were kicked off in style with a disco on the Saturday night. Like all good discos the children made up the greater percentage of attendees and spent most of the time chasing each other around the marquee and across the playing field while the DJ played to an empty arena. Eventually as darkness descended the adults were able to move inside the marquee and take to the floor gyrating to hits from the 70's and 80's like they were only yesterday...perhaps I'm just speaking for myself!

I awoke on Sunday morning, as I imagine did most Speen villagers, basking in the thought of glory that was to be bestowed upon the our team later that afternoon, when the combined efforts of adults and children alike would surely lead us to victory. A few limbering up exercises and a swift walk with the dog served merely to confirm the peak fitness my body had reached in preparation for the days coming events – that trophy was ours for the taking!

The weather started favourably with a group rounders match taking place while hot dogs and drinks were served from the pavilion. Once again Keith Jones's BBQ skills came to the fore. Team captains were allocated in democratic fashion (although my own experience somewhat differs from this), and briefed on the rules and etiquette to be observed throughout the day.

With the precision of a Swiss watch the first event was called and got underway bang on schedule. What followed was a closely contested series of team relay and individual events interspersed with frequent diving for cover from the sudden downpours. Some children took this opportunity to extend the competition to 'who can get the wettest'...much to the disbelief of onlooking parents. However a combination of Bouncy Castle, Face Painting and

Magic shows kept the children entertained throughout the proceedings.

As the day progressed my dreams of team glory were slowly evaporating as our team doggedly brought up the rear. Sure enough, as the final results were called and the teams settled down to a well deserved tea, our impending fate was confirmed. The day had been deservedly won by the "Parslows" team, consisting of villagers from Flowers Bottom Lane, Highwood Bottom, Grubbins Lane, Hill Side, Turnip End and Slad Lane.

However, the real winner at the end of the day must be the village of Speen. Despite the rain, and with the carefully planned and coordinated events, ably organised and headed by the Playing Fields Committee and Jeremy Symondson, I feel I can say that a great day was had by all.

Incidentally our team 'Backlands' staged a late comeback and finished 5th, perhaps I can dream of team glory after all.....roll on Speen Fun Day 2004!

Steve Radforth



What's on in Speen & North Dean

July

3rd	WI - Brush up on Beauty	Speen Village Hall
5th	Car rally (Jan Dawson 562864)	North Dean
12th	Speen Village Fete	Speen Playing Field
13th	Pig Roast - (Judy Keen 562151)	North Dean Village Hall

August

2nd	North Dean Fete & Supper in the marquee	North Dean
7th	WI - Crystal healing experience	Speen Village Hall

September

4th	WI - The story of pub signs	Speen Village Hall
5th-6th	"The Pied Piper of Speen" - Speen Festival 2003	Speen Playing Field
6th-7th	Art & Photography Exhibition - Speen Festival 2003	Speen Village Hall
7th	Speen Antiques Day - Speen Festival 2003	Speen Playing Field
9th	The Wildlife of Speen & N Dean - Speen Festival 2003	Speen Village Hall
10th	The Cole Porter Story - Speen Festival 2003	Speen Playing Field
12th	BBC Any Questions - Speen Festival 2003	Speen Playing Field
13th	"Pirates" - Speen Festival 2003	Speen Playing Field
13th	Festival Finale Concert & Supper - Speen Festival 2003	Speen Playing Field
18th	Speen & North Dean Golf Day	Princes Risborough GC
20th	Men's Breakfast - "A City Story"	Speen Village Hall
24th	Alpha Supper (Speen Baptist Church)	Speen Village Hall
28th	Songs of Praise & Tea for senior citizens	Speen Baptist Chapel

October

2nd	WI - Japanese culture	Speen Village Hall
17th	Wine tasting	North Dean

November

6th	WI - Annual Meeting	Speen Village Hall
7th	Ladies' Breakfast - "A Riding Story"	Speen Village Hall
15th	Fondue night	North Dean

December

4th	WI - Making paper flowers	Speen Village Hall
18th	Christmas Quiz - Speen Supporters Group	King William IV
19th	Carols and mulled wine	North Dean

Who's who in Speen & North Dean

Speen & North Dean News editor	Martin Stockley	488101
Speen Baptist Church - minister	Andy Gower	488758
Speen Festival - chairman	Martin Stockley	488101
Speen Fête - Chairman	David King	01844 344839
Speen & North Dean Good Neighbours	Christine Oliver	488409
Guides	Pauline Hall	488372
Speen Horticultural Association - secretary	Peter Dawson	488222
Speen Infants' School - head	Mrs Nayna	488321
Speen Infants' School PTA	Louise Wilson	563750
Speen Marquee - hirings	John Holmes	488420
Mother & Toddler Group	Sandy Mitcheson	488875
Speen Neighbourhood Watch	John Radford	488679
Speen Playing Field Association - secretary	Jenny Cowan	488546
Speen Pre-School	Janis Hearn	488440
Speen Residents' Association	Gordon Hall	488331
Riding for the Disabled	Gloria Holmes	488420
Speen Singles Group	Dave Howarth	488578
Speen Supporters' Group	Christine Oliver	488409
Speen Stores	Sandra Clarke	488258
Speen Tennis Court - secretary	Cherry Seekins	488355
Speen Village Hall - bookings and secretary	Catherine Butler	488412
North Dean Village Hall – chairman	Bob Wheeler	564090
North Dean Village Hall - secretary	Jan Wheeler	564090
North Dean Village Hall - bookings secretary	Megan Chinn	563074
North Dean Village Hall - buildings/development	Eric Cash	562969
North Dean Village Hall - fete committee	Dorothy Hazell	563534
North Dean Village Hall - family committee	Louise Wilson	563750
North Dean Village Hall - fund-raising & social	vacant	
North Dean Village Hall - housekeeping	Pat Rogers	562041
Speen WI - secretary	Barbara Collett	488348

Hughenden Parish Council
Lacey Green Parish Council

R F Gould (Chairman)
Don White (Chairman)
Peter Symonds

488437
488016
488315
488315

Wycombe District Council
Buckinghamshire County Council

Paul Rogerson
Paul Rogerson

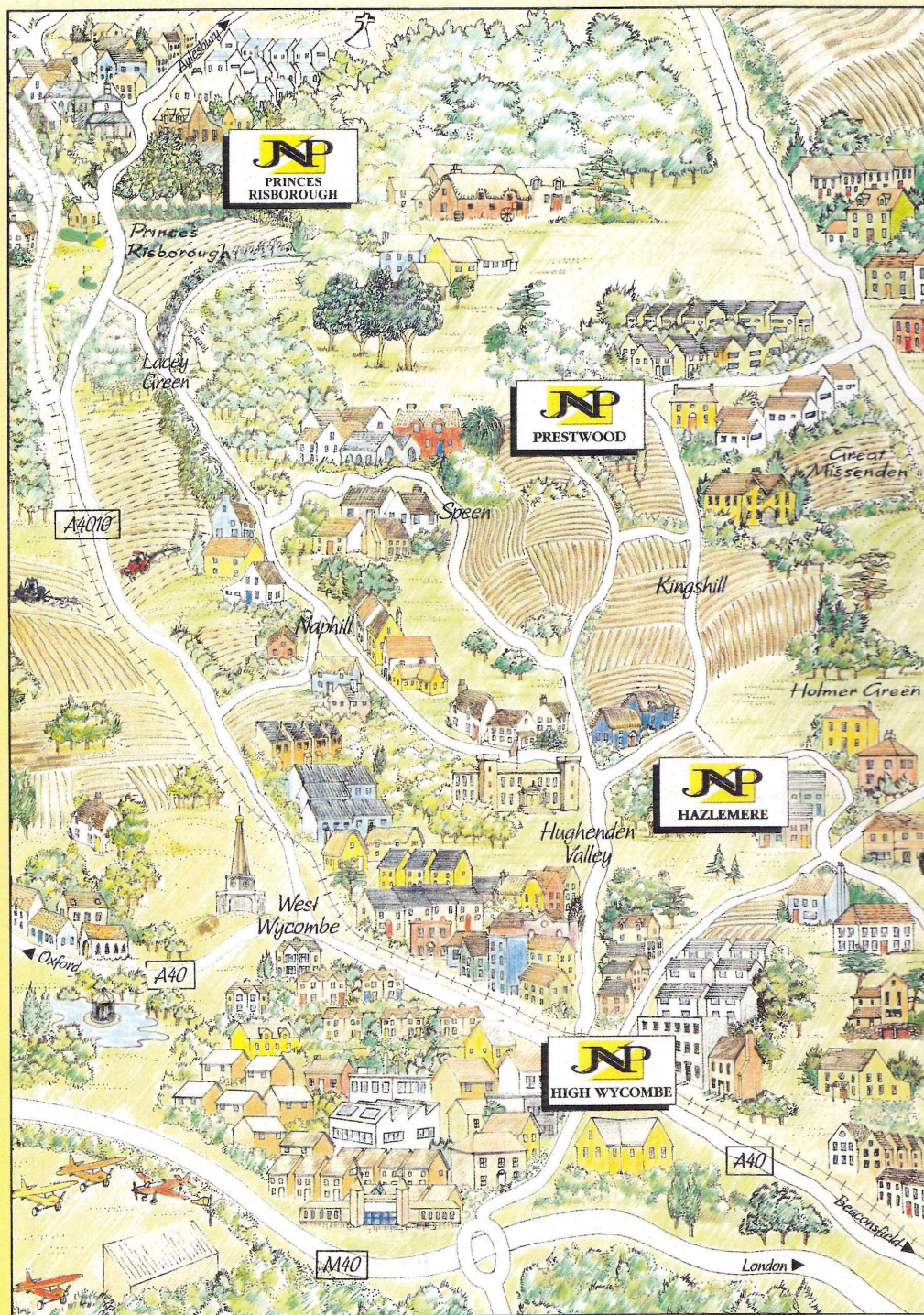
Local Police contact number: 715352

The **JNP** Partnership

complete property solutions



www.jnp.co.uk



residential sales

■
*fine & country
homes*

■
new homes

■
land & planning

■
residential lettings

■
*mortgage
consultants*

■
financial services

■
the mortgage shop

■
chartered surveyors

=====
offices at

■
high wycombe
01494 - 528000

■
hazlemere
01494 - 716000

■
prestwood
01494 - 866000

■
princes risborough
01844 - 345666

■
lettings
0845 - 060 - 1000

■
the mortgage shop
01494 - 718080

■
park lane london
020 7079 1555

■
chartered surveyors
01491 - 824888
01494 - 528000

*helping you buy or sell your home in the
chilterns and south buckinghamshire*