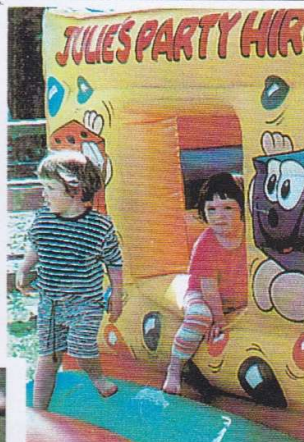
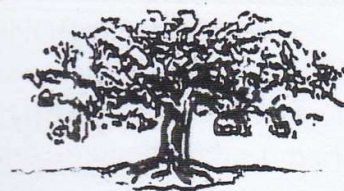


Onward & Upward.



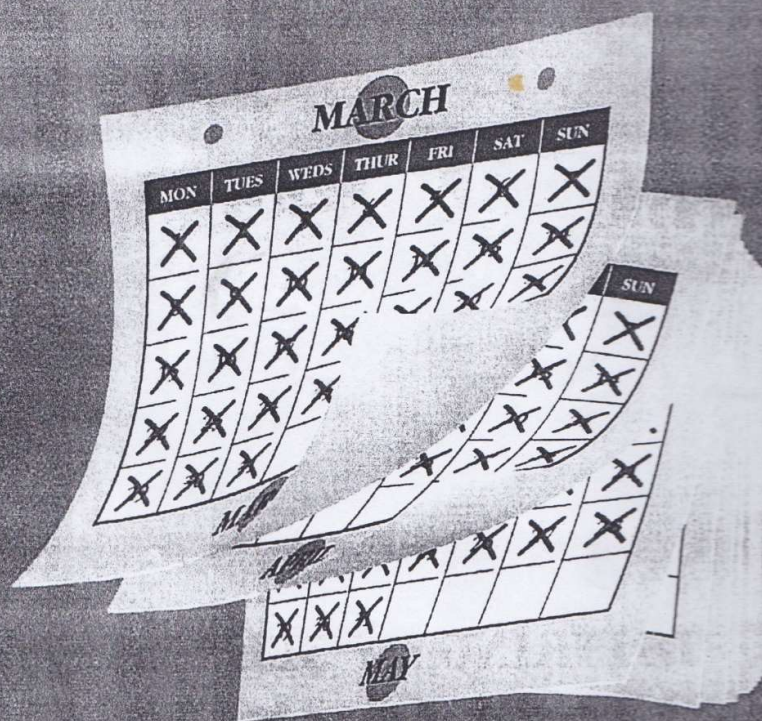
The dynamic duo!

Philip

Green

& Partners

**EVERY DAY ONE OF OUR CLIENTS
MOVES HOME IN THE LOCAL AREA!**



If you are moving, why not join our growing number of satisfied clients. Call us ANY day of the week for a free valuation.

31 Crendon Street
High Wycombe, Bucks. HP13 6LJ.
Tel: (01494) 451010

Hazlemere Cross Roads
Hazlemere, Bucks. HP15 7LN
Tel: (01494) 711777

2 Wycombe Road,
Prestwood, Bucks. HP16 0PW
Tel: (01494) 868600

**Unrivalled colour property presentation
AND colour advertising!**



"The High Wycombe and District University of the Third Age" (U3A), meets on the fourth Wednesday afternoon of the month from 2-4 pm in the Kings Centre, Desborough Road, High Wycombe. Active Interest Groups, which meet at various times and locations throughout the month, include: Astronomy, Croquet, Current Affairs, Local History, Ornithology, Patchwork, Poetry, Walking, Woodcarving and three language conversation groups - French, German and Spanish. For details of these and other groups or for further information telephone 01844 346715.

Introducing the new Bio-Optic Organized Knowledge device, trade-named -- **BOOK**.

BOOK is a revolutionary break-through in technology: no wires, no electric circuits, no batteries, nothing to be connected or switched on. It's so easy to use, even a child can operate it. Compact and portable, it can be used anywhere -- even sitting in an armchair by the fire -- yet it is powerful enough to hold as much information as a **CD-ROM** disc.

Here's how it works:

BOOK is constructed of sequentially numbered sheets of paper (recyclable), each capable of holding thousands of bits of information. The pages are locked together with a custom-fit device called a binder which keeps the sheets in their correct sequence.

Opaque Paper Technology (OPT) allows manufacturers to use both sides of the sheet, doubling the information density and cutting costs. Experts are divided on the prospects for further increases in information density; for now, **BOOKS** with more information simply use more pages. Each sheet is scanned optically, registering information directly into your brain. A flick of the finger takes you to the next sheet.

BOOK may be taken up at any time and used merely by opening it. **BOOK** never crashes or requires rebooting, though, like

CONGRATULATIONS

Many congratulations to Natalie Awdry (Becky in the Leaves of Time) who attained highest marks for the Junior Choristers examinations in Buckinghamshire this year. This has led to her being granted the Bishop's Award Bursary for further Royal School of Church Music courses. We understand this is a real achievement. Well done Natalie!

other devices, it can become damaged if coffee is spilled on it and it becomes unusable if dropped too many times on a hard surface. The "browse" feature allows you to move instantly to any sheet, and move forward or backward as you wish. Many come with an "index" feature, which pinpoints the exact location of any selected information for instant retrieval.

An optional "BOOKmark" accessory allows you to open **BOOK** to the exact place you left it in a previous session -- even if the **BOOK** has been closed. **BOOKmarks** fit universal design standards; thus, a single **BOOKmark** can be used in **BOOKs** by various manufacturers. Conversely, numerous **BOOK** markers can be used in a single **BOOK** if the user wants to store numerous views at once. The number is limited only by the number of pages in the **BOOK**. You can also make personal notes next to **BOOK** text entries with optional programming tools, **Portable Erasable Nib Cryptic Intercommunication Language Styli (PENCILS)**.

Portable, durable, and affordable, **BOOK** is being hailed as a precursor of a new entertainment wave. **BOOK's** appeal seems so certain that thousands of content creators have committed to the platform and investors are reportedly flocking to invest. Look for a flood of new titles soon.

Speen Magical Millennium Fete

Impressions of British Culture and Customs

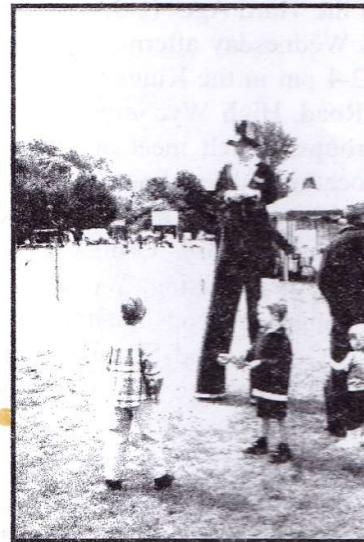
Coming to England from Bulgaria, I was glad I could look forward to some cool nights and a rest from the high temperatures. Back home, with temperatures in the high thirties, it was so hot that it was impossible to feel comfortable or enjoy the summer evenings.

So when I arrived I was grateful for the "British summer" but it would seem this year the weather had surpassed itself with temperatures so cool. It was a good job I had packed a sweater and so was safe from cold.

Weather here, often a good excuse to start a conversation or even to complain about something, is one of the peculiarities in this country. I had been invited to the village fete in Speen, Bucks, and this being Summer in England I had been warned that the celebrations would carry on through the rain, hail or, if we were lucky sunshine.

I found that the fete comprised a kaleidoscope of amazing and funny stalls that were scattered all around the field. Some were sheer fantasy whilst others half-resembled real life. All seemed to be solely for fun, but were raising funds for a good cause.

The variety of the fete really caught me unprepared. I didn't know whether to take some things as a joke or in a serious way. "The Human Fruit Machine" made lots of people laugh and tempted quite a few to gamble. "The Olivers' " invention was so well made that I quite considered asking for the patent and importing it in Bulgaria. There were lots of losers and even some winners for a change. I can tell you that it was fun to be part of the fruit machine but it was even funnier to watch as a customer. There were many more areas of great entertainment such as Punch & Judy, Propeller spinner, Beat the Goalie, Tombola, Co



conut shy, Country skittles. Above all this towered the stilt walker and I bet he was able to see more funny things than anybody else. Maybe next year you should ask him to write an essay.

The atmosphere at the fete was something between a theatre, funfair, a party of good friends and a historical tour through Speen's past. The vintage car parade and the people dressed in Victorian costumes took us back to the past and let us know what had happened in days passed.

There is a lovely saying in English, "All is well that ends well" and this was accomplished with the family country dance. This was another great experience for the day, especially at the end when it became a complete havoc.

I come from a country where we have long, hot Summers but fetes and barn dances are unknown. The reasons why are the cultural differences and the manner of the people. It seems the English nation is good at coming together for celebrations and festivals.

In spite of the bizarre weather it was a fun day which I thoroughly enjoyed.

By Maria Mitkova.

Russians at Speen Millennium Fete !

I had already finished my classes at the design school when my mother came from Moscow for the award ceremony and exhibition. The day seemed to be an ordinary one, but Christine called me and invited us to come to her house. We have met Christine and John many times since I and my husband had come to London. We enjoyed seeing them very much. Friendship between our families, which started many years ago, is precious for us. I call Christine my English mother. This time we were invited for the annual Fete in Speen where people were going to celebrate the Millennium. We were very glad indeed to see Christine and John again, and to have an opportunity to take part in such an event. Christine met us as usual at the station. She was a little bit nervous because she was to appear twice during the event changing her dress. John, with his usual sense of humour told us that we will take part in running a Human Fruit Machine

side show and explained us the rules. The Fete Program was exciting. The dress parade, country dances, vintage car parade, brass band - we liked everything. We have never seen anything like that. Most of all we liked the dancing display by Speen School and the final song "The Leaves of Time".

We talked to different people who know the Olivers. We felt ourselves very comfortable with these nice and open hearted people. The day was wonderful and nothing could darken it, even the sudden rain. I can't forget my feeling when I watched the pageant "The Leaves of Time." I was impressed by the community spirit. Speen is a small village but people of all ages know and honour its history. Unfortunately Russian people forgot many of their good traditions. We were coming back home a little bit tired but happy and full of impressions.

By Yevgeniya Mashenko.

'RISBORO' OSTEOPATHS

and natural health centre

Tel: 01844 - 275055 for appointments

**Incorporating: ACUPUNCTURE and HOMEOPATHY
FREE assessment or advice**

Conditions we treat include...

Back ache

Sciatica

Headaches

Tennis elbow

Painful knees

Jaw pain

Sinus problems

Menstrual disorders

Stress and nervous tension

Shoulder problems

Sports injuries

Stiff necks

Sore feet

Stiff joints

Trapped nerves

Irritable bowel

Arthritic pain

**Also available: Cranial Osteopathy for Babies, Children and Adults
Homeopathy for adults and children**

26 Wycombe Road, Princes Risborough, Bucks

News from Speen Baptist Church

Andy writes:

Men's Breakfast 16th September

It is 30 years since Jimi Hendrix died of a drugs overdose in 1970 and by a strange coincidence our speaker at the recent Men's Breakfast - Bryn Haworth - knew and played with Hendrix in the 1960's. (Another coincidence is that Bryn's wife, Sally, spent many of her youthful weekends and holidays at Windy Ridge on



Grubbins Lane.)

Despite the 8:30am start Speen Village Hall was full as Bryn treated us to an 'unplugged' guitar session over a cooked breakfast. The variety of musical styles he played showed what a versatile and incredibly talented musician he is. And as he shared something of his life story - leaving home in Lancashire at an early age to risk finding work as a musician in London, a successful career both here in the UK and in America, a gradual reconciliation with his father, and eventually coming to faith in Christ - it was clear that despite great talent and success he remains an approachable and unassuming person. Apart from playing and speaking at the Men's Breakfast Bryn worked very hard over the weekend teaching a group of 25 musicians how to use their talents in leading people in Christian worship. If you visit the church one Sunday you'll be able to observe the fruit of his labours! We hope to welcome Bryn and Sally back for a concert next year.



And speaking of fruit from labours, our Harvest Celebrations took place on Sunday 24th - Monday 25th September including ...

Harvest 'Top Ten' Songs of Praise and Retired & Senior Citizens Harvest Tea



This year we finally got the order right. I'm not thinking about the order of preference of the songs - but the decision to sing first and eat tea afterwards! It proved much easier to sing on a relatively empty stomach and singing with such evident enthusiasm not only threatened to

raise the roof on occasions but also clearly created healthy appetites.

Personal invitations went out to those who we thought might be interested (which was just under 20% of the homes in North Dean and Speen) and despite the afternoon downpour many people filled the church to sing, and then the hall, to eat.

The most popular hymn of the 33 different titles voted for was a tie between the traditional harvest-time favourite *'We plough the fields and scatter the good seed on the land'* and the contemporary *'Be still for the presence of the Lord is moving in this place'*.

Speen Pre-School Harvest Service



On the Monday it was great to welcome 20 lively children and their equally lively and well behaved parents, grand-parents, and friends to the church for Speen Pre-School Harvest Service.

Janice Hearn and her team had done a marvellous job teaching the children the words and actions of the two songs in the short time since the summer holidays, and with Gwen Palmer on the piano we were confident nothing would go wrong. We did, however, need the parents to come to our aid with a couple of tricky lyrics for at the end of the line:

My God is so big, so strong and so mighty

There's nothing that He cannot do (ooh ooh)

the children were so busy with the actions that we had to rely on the parents for the 'ooh ooh's'.

I wish I had had a video camera handy for that moment!

Summary of Weekly Church Activities

- Sundays:** 10:30 am Worship for all ages incl. Creche and Sunday School for 3's-12's and Teens discussion
12:00 New Musicians group
12:00 Fair Trade Stall in church hall (2nd Sunday in month)
6:00 pm Worship Group.
7:30 pm Meeting for Prayer.
- Mons:** 7:45 pm Alpha Course
- Weds:** 10:00-11:30am "Time Out"
10:00-11:30am Daytime Home Group - Chinysnook, North Dean
8:00-9:30pm Evening Home Group - Studridge, Studridge La.
- Thurs:** 8:00-9:30pm Evening Home Group - 172 Parkwood Walters Ash

Dear Customers and Friends

It is with regret we have to inform you that our lease expires on Speen Stores on the 4th May 2001. Unfortunately we are unable to renew the lease. We have informed Buckinghamshire Housing Association, who will endeavour to replace us with suitable tenants to continue to run Speen Stores/Post Office with the same passion and commitment as we have over the past three years.

This is a special thank you for those of you who have supported us and the store whole heartedly, without your support this lovely Village shop would not have survived and or indeed continue to survive in the future.

We have made many friends over the past couple of years some very dear friends and have never regretted setting up our business and home amongst this very special community.

We would like to thank Buckinghamshire Housing Association especially Jane Flemming for her guidance and support in the early stages of the project and also the Post Office.

We have no plans to move from North Dean, and we are writing this letter with the hope that someone connected with the Village would be in a position to continue to run Speen Stores, we would be very happy to help in any way we possibly can.

If any one is interested please do not hesitate to come and talk to us.

May 2001 is a long time away, so please continue to support us and lets enjoy the remaining time that we have left.

Thank you and best wishes

David and Sharon
Speen Stores

TIPS, HINTS, HATES and GRIPES

Hate of the Month - Biro's!

Clean all windows with car turtle wax. It repels dirt and has a brilliant shine.

Use Boots Foot Lotion / Cream to banish unsightly cracked heels. It really works.

Regular contributions to this column much appreciated but nothing personal, please!

Has anyone got an hour
a week to spare?

It's fun and worthwhile .

Listening to children
read at Speen school.

Interested?

Details from Gloria

488420

THE GARAGE THAT COMES TO YOU

All areas within 35 miles of High Wycombe

VEHICLE TECHNICIANS

AUTOS - MOBILE

ESTABLISHED 1971

**SERVICING
REPAIRS**

**BRAKES
CLUTCHES
FUEL INJECTION
ELECTRONIC IGNITION**

Most makes serviced, British & Foreign

No Call Out Charges

Call
Bob Wheeler
or
01 494 564090
0836 673441

PERSONAL, COMPETENT AND FRIENDLY SERVICE

I am now based in NORTH DEAN and am probably one of the best equipped MOBILE services in existence. 30 years service to the surrounding area has given me a wealth of knowledge and keeps me abreast of all technological advances. I have up to date diagnostic and tuning equipment to cope with almost all cars and light commercial vehicles. Another benefit is, I COME to YOU, so you don't need to leave home for your servicing or repairs. No other garage is closer to you. If you wish, your car can be serviced or repaired at another Location, e.g.. - at work (if your employer is agreeable).

I offer a Personal, Friendly and Competent service to the highest standards.

Why not call today and book your next service?

Wycombe District Council September 2000

The last few months have seen difficult times for the Council. The rejection by the tenants of L.S.V. T. (Large Scale Voluntary Transfer of council property) by the slimmest of margins can only be seen as a blow for the Council and probably for tenants themselves. What this means is that the Council will remain responsible for the housing stock and no new money will be made available either for repairs of building works. It also means that as the Council will not be debt free, certain government restrictions on council spending will still apply.

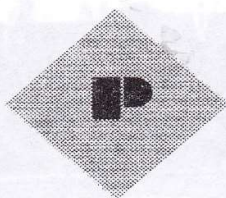
The Local Plan to 2011 is nearing the Public Inquiry stage. The inspectors are now scheduled to open proceedings on 3rd October 2000 and to be completed by June 2001. The venue for the inquiry is the council chamber at Wycombe District Council with all sessions open to the public. If you want to know more then you can either call Tom Currie at W.D.C. or visit the W.D.C. web site www.wycombe.gov.uk/planning and click on *Local Plan*. Applications from local voluntary organizations for Annual Revenue Grants 2001/2002 are scheduled to be evaluated early next year and then be put forward for consideration by members. For those of you involved with charitable or non profit making

organizations now is the time to start the application process. Grants may be obtained on an annual renewable basis or for a single one off payment. From the 1999/2000 list, village halls and youth groups were successful in gaining grants. Again, if you would like to know more, then contact Howard Taylor of Leisure and Community at W.D.C. and he will be pleased to help.

On a local note and in response to the many concerns raised with the problems of parking at St. John's School, Lacey Green, I have set up a working group of interested parties to see if a solution can be found. The group consists of representatives from the school, church, parish council, sports club and Lacey Green & Loosely Row residents' association. The group will be looking at any possibility and will I hope be able to come up with a working solution capable of being provided. If you have any ideas on solving this problem then the group would be pleased to hear from you.

If you have any concerns about the services provided by your Council then please drop me a line or give me a call and I will do my best to help.

Paul Rogerson Member for Lacey Green and the Hampdens tel: 01494 488315



PARTRIDGE & CO.

Chartered Certified Accountants

**The Gables, Market Square, Princes Risborough,
Buckinghamshire, HP27 0AN**

Tel: 01844- 343900; Fax 01844-343903

E-mail: accounts@partridgeandco.i-way.co.uk

Are you fed up dealing with Inland Revenue Self-Assessment Returns?

Why not speak to Richard Partridge and let him provide a Full Tax Return Service for you. We have the market leading professional Tax Return software designed for all types of personal and company tax returns.

As Registered Auditors and Business Advisors, we specialise in providing a highly personal service to owner-managed companies, trades and personal tax clients, covering all aspects of business accounting and taxation.

NB: We have now moved to offices in the Market Square Princes Risborough.

HUGHENDEN PARISH COUNCIL

PLANNING APPLICATIONS FOR SPEEN AND NORTH DEAN

MAS/00/05648/FUL – Construction of two storey extension, conservatory, enlargement of dormer, alteration to bay window at Jasmine, Speen Road, North Dean.

The Parish Council objected to this application as it contravenes the 50% Green Belt rule.

CDP/00/05816/FUL – Erection of 2 storey rear extension and sun-room (retrospective) at 4 North Dean Cottages, Speen Road, North Dean.

The Parish Council object to this application due to the loss of amenity and intrusion on neighbour. The Parish Council strongly object to retrospective applications.

CDP/00/05815/FUL – Erection of 2 storey rear extension and sun-room (retrospective) at 3 North Dean Cottages, Speen Road, North Dean.

No objection provided no intrusion or loss of amenity on neighbours. However, the Parish Council strongly object to retrospective applications.

CPD/00/06531/FUL—Erection of detached garage in the rear garden at Dellridge, 1 North Dean Cottages, Speen Road, North Dean.

MAS/00/06761/FUL-Demolition of existing garage & workshop, construction of 2 storey extension, single storey conservatory and breakfast room, enlargement of dormers, alterations to roof, construction of detached workshop and erection of 6m flagpole at Jasmine, Speen Road North Dean. No objection to the building extensions, but we question the appropriateness of a permanent flagpole in the AONB. Adjacent to a conservation area.

JDG/00/06784/FUL— Change of use of small area of agricultural land and construction of new underground garage at Highview House, Spring Coppice Lane, Speen.

JDG/00/06626/FUL— Construction of front extension, new pitched roof to dormer window and new cladding to front elevation at Spring Coppice Farm, Spring Coppice Lane, Speen



dell brothers

**Builders, Developers, Plumbers
and Decorators**

EST.1948

LACEY GREEN, BUCKS.

Tel: 01844 344342/346688



Don White opening Speen Magical Millennium Fete. The board listing the marquee benefactors for the new all singing and dancing marquee. The wizard of the woods in support

D.J.Coles

Property Maintenance and Improvement

- Painting & Decorating
- Fitted Kitchens & Bedrooms
- Carpentry
- Loft Insulations & Boarding
- Fence & Shed Erections
- Gutter Clearing & Replacement
- Garden Maintenance



No Job Too Small

Tel: 01494 816282
Mob: 07747783015


Bonfire and Fireworks Display

**Saturday 4th
November**

on Speen Playing Field

Advance Discount Tickets
on sale from Speen Stores
Adults £4 Children £3
or £5 entry on the gate






**VEHICLE TESTING
STATION**

COLES & BLACKWELL

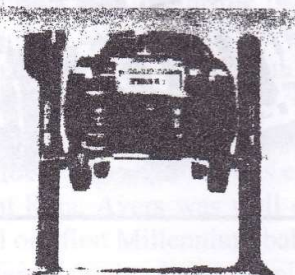
ACCIDENT REPAIR & SERVICING SPECIALISTS

Walters Ash, High Wycombe, Bucks HP14 4UX
Opposite the Bradenham Hill Trip Junction





NRA
NATIONAL RIFLE ASSOCIATION

Mechanical



Bodywork





**BRAKE SAFETY
centre**

**Your local brake
specialists**

- ❖ All makes of cars serviced
- ❖ Breakdown & Mechanical repairs
- ❖ Cryston tuning and diagnostics
- ❖ Tyres all makes, low prices
- ❖ MOT Testing & free re-test
- ❖ Brakes & Clutches
- ❖ Exhausts & Batteries

FREE ESTIMATES

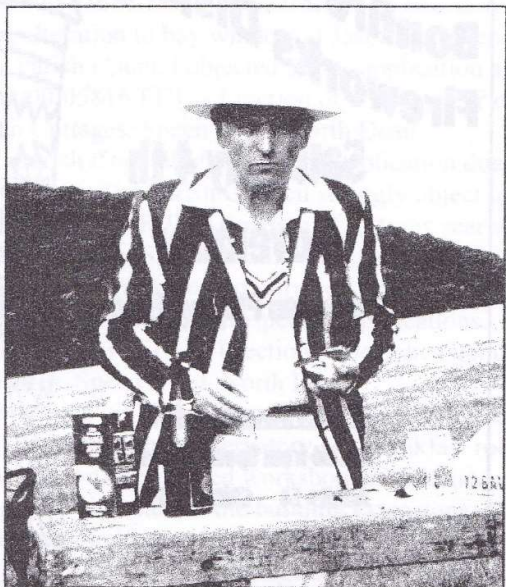
01494 563102

Established 1959

Monday to Friday 8.00 - 5.30
Saturday 8.30 - 12.30

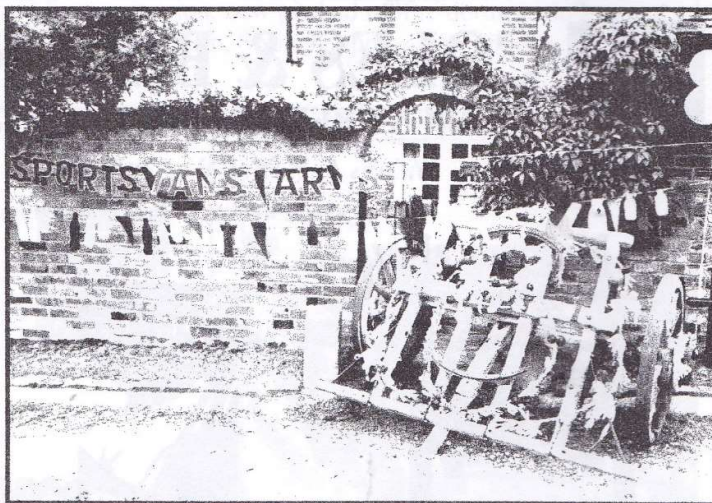
- ❖ Insurance & private accident repairs - free "R" Reg loan cars
- ❖ Approved by all leading insurance companies
- ❖ Chassis repairs on alignment jg
- ❖ Windcreens
- ❖ High gloss paintwork in our low bake oven
- ❖ Welding

North Dean Millennium Day



June 25th dawned bright, and by just after 8.00 am a delicious aroma of bacon being cooked wafted across the Village. Breakfast was eaten, washed down by copious quantities of Bucks Fizz, on the hill behind the Village Hall. With the sun in the sky and a stunning view down our beautiful Valley a fanfare from the Piggots Band sounded across from the hill opposite and got the day off to a great start!

While the final preparations were being made in the Playing Field, judges were patrolling the village to judge the Best Decorated Gate competition. With so much time and effort being put into each and every one, they reported that the task had been enjoyable but very difficult to reach a decision.



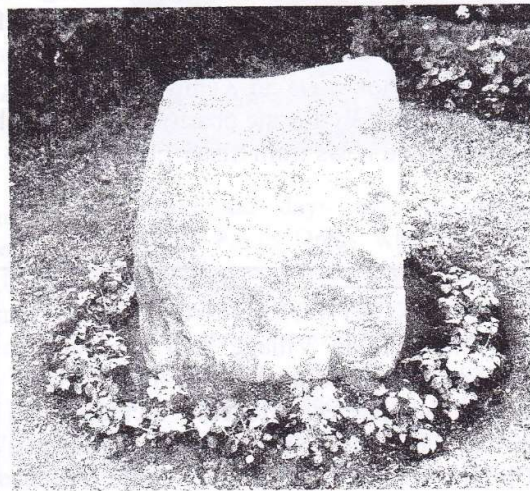
By 10.30 am a noisy but happy crowd had begun to gather in the lay-by at the top end of the Village, most in fancy dress. They were soon joined by an assortment of decorated vehicles. The parade was underway by 11.00 am headed by a small horse (with Jim Kent marginally in charge), this being part of the farm entry. With those residents not joining in lining the road, the parade made its way through the Village to the lower farm and then back to assemble in the Playing Field, where the fancy dress and decorated vehicles were judged by the Parish Council Clerk Lynn Turner and Councillor David Davies. Again they reported it to be a very difficult task to decide the winners.



And the Millennium Stone

The Millennium Stone, which was been found locally and chosen after at least half a dozen others had been found and discarded, had been transported to the barn behind the Village Hall. There it was engraved by Peter Foster, a former resident of North Dean, whose father had been apprenticed to one of our more famous residents, Eric Gill.

Now in place in front of the Village Hall, it was unveiled by the Chairman of Hughenden Parish Council (whose name escapes me at the moment), and this was followed by the prize giving for the winners of the gate and fancy dress competitions



On to the unveiling of the Millennium Book, (a report on the book and exhibition is to be found elsewhere in this edition of the News). We were fortunate that our eldest resident Rene Ayers was well enough to do the honours for us, helped by Doris Redrup, and our first Millennium baby Jacob Wise.

After this rather busy morning we were able to relax and enjoy the B.B.Q. provided by the Village Hall Committee, cooked and served by them and volunteers and friends of the Village. Approx. 250 meals were served, washed down by nectar provided by the very adequate bar.

Having demolished most of the contents of the bar, a hilarious half an hour finally produced a village photograph, no mean feat considering the numbers involved.

A continuous cricket match then followed with Lower North Dean challenging Upper North Dean, with about thirty players on each side. Runs were hard to come by and Jill Kent had the unenviable task of keeping score, and contriving to keep the scores almost level with Lower North Dean winning by one run.

Keeping the spirit of the day alive, the clearing up was achieved in record time as everyone joined in, and so ended a day most of us will remember for a very long time.

John Rogers

NORTH DEAN THIRD WORLD PROJECT – UPDATE

- The North Dean Ward for AIDS/HIV patients in Luwero, Uganda has been in operation from early in the summer. Sister Ernestine has not only the building but through a North Dean resident, Dr. Dorothy Bray, who works for Glaxo-Wellcome, Luwero is getting doctors' time, educational materials and medicine. Dorothy has major responsibility for a big AIDS/HIV study in Kampala and has arranged for Luwero, 40 miles away, to benefit. Thank you Dorothy.
- An article on the project appeared in the "Guardian" and as a result we have heard from a large village in Warwickshire which is planning a similar scheme, probably in India.
- Julia Page (once a pupil of NWR's) ran in the Wycombe Half Marathon and was sponsored for £600 for the project –thank you donors and Julia!
- We are selling tickets rapidly for the Grand Supper Dance and we shall be able to pay off the £2000 lent us in January and give David Kemp a good sum to take to Sister Ernestine for the plastering, painting and finishing of one of the two wards that still needs to be completed.
- On 5th October David Kemp will be going out to Uganda again for some weeks on a mission largely for the charity Toolaid but he will get to Luwero and bring back photographs and news from Sister Ernestine.

By Nick Wheeler-Robinson

NORTH DEAN HALL

The North Dean Village Hall committee met in September to consider future Hall policy and charges. Moderate increases in hiring fees were agreed (contact Megan Chinn on 563074 for details). With recent improvements it is now a very well-appointed small hall and its use is steadily increasing. (And, as with many small halls, charges for North Deaners are significantly reduced –NB!) We have plans for extending the range of uses of the hall – any ideas you may have would be welcome.

This year we have been much encouraged by the support and involvement of many newer North Deaners, particularly at the Millennium Day and the Fete (which produced its best ever profit of £1,450 – and at which the splendid Speen Marquee was a great improvement – thank you Speen!)

One of the targets for 2000-01 is to bring down the average age of our committee ... could you help here personally?!

by Nick Wheeler-Robinson

Hughenden Builders

Established 22 years

All Building Works Undertaken

- ◆ Extensions.
- ◆ Alterations.
- ◆ Loft Conversions.
- ◆ Roofing – all types.
- ◆ Drives, Block paving, Tarmac etc.
- ◆ Patios, Walls, Garden landscaping.
- ◆ Plumbing, Plastering, Carpentry.

Planning Service.

Clear & Concise Plans

Single Story £150.00

Two Storey £300.00

(plus council fees)

Free detailed estimate with drawing.

Planning fees returned if tender accepted.

**171 Main Road
Naphill**

**Tel: 01494 562937
01494 438057**

NORTH DEAN FETE 2000

Saturday August 5th

Once more North Dean managed to find a window in the weather for Fete day. After a very mixed week of rain and sun when trying to get the field prepared, the sun shone for us on the day.

By just after 8.00 am Gwen was at her post in the marquee, ready to check in the exhibits for the show. Unfortunately numbers were down this year, especially in the children's sections. With more children in the Village now this was very disappointing. Perhaps these sections should be revised, so if you have any ideas how this can be done please contact the Committee. Come on kids, perhaps your computers hold the key.

In recent years there have been few, if any, entries from outside the Village. Speen used to give us a run for our money, but has now dropped out. Join the golfers and lets have some competition, all sections are open to everyone.

We are grateful to Speen this year for allowing us to hire their new marquee. With the loss of the scout one, which has been our mainstay for many years, we did have a problem, but with the added space we were able to stage not only the show but also to repeat some of the Millennium photographic exhibition. I hope it will be available to us for future years, especially if Speen can swell the numbers of entries in the show, and help to fill it up.

As always we tried to keep the day as near possible a village fete, and as all reports seem to indicate we were reasonably successful. Our stalls and sideshows are based on fun as well as profit, and this year the provisional count is about £1,450 profit.

In order to run this annual event we have to rely heavily on help from outside the Committee, which is always forthcoming, and our thanks to all who give up their time to

this end.

To open the Fete this year we invited back an ex-resident, Viscount Lord Simon, who was born in North Dean and spent most of



his childhood days here. Lady Simon judged the Fancy Dress, which again was a disappointment in numbers but not in quality. Well done the children who entered.

A special mention to the lads, who without any prompting came to the Committee prior to the Fete and asked if they could raise some money by running a football game. We read too many adverse reports about the youth of today, so I am pleased that in North Dean we have children with a more positive attitude to life. Well done, and keep up the good work.

The bar tent and ice cream stall kept our thirst at bay, and some young puppies brought from the farm kept us amused and mystified as to their combined weight.

Piggots band were once again at their best and entertained us during the afternoon, an attraction which has become an essential part of Fete Day.

With a few attractions to keep the children happy, such as the bouncy castle, races and the ever popular horse racing, the day was a success for all.

John Rogers
Chairman North Dean Village Hall.

THE OLD PLOW BISTRO AND RESTAURANT

A selection of dishes from the current bistro and restaurant menu : -

STARTERS

Smoked salmon and Devon crab with lemon and chive mayonnaise
½ Mediterranean prawns with Marie Rose sauce
Catalan fish and shellfish soup with saffron and prawns
Home-made Scotch salmon gravadlax
Cured Bresaola with fresh asparagus, Parmesan, olives, lemon and olive oil
Los Angeles Caesar salad with smoked duck breast

MAINS

Seafood fricassee with cream, button onions and steamed rice
Grilled Aberdeen Angus rib eye steak with cracked peppercorn sauce
Fresh Devon scallops with a Provencale lemon butter sauce and sweet cured bacon
Loin of veal, grilled with wild mushroom sauce
Roasted prime English chump of lamb
Roasted new season's partridge with braised Savoy cabbage, smoked pork, game sauce
Grilled medallions of venison grilled apple and black pudding , red wine sauce

DESSERTS

Fresh peach ice-cream with fresh strawberries and shortbread biscuits
Rum and lemon pannacotta with a raspberry compote
Farmhouse cheese platter with grapes, walnuts, celery, walnuts and a glass of port
Apple and blackberry crumble with vanilla ice-cream
Lemon brulee tartlet with a vanilla sauce

All dishes are subject to availability

**For Christmas bookings, parties or details of our conference facilities
please telephone 01494 488300 and ask for Mrs Cowan**

The Old Plow Bistro and Restaurant, Flowers Bottom Lane, Speen



Speen WI



Speen WI Press Report

It has been a busy and interesting summer for Speen WI members.

At the June meeting Mrs Helga Gerhardt told of her life in Hitler's Germany. She had already written one autobiographical book and had now completed a second, copies of which she had for sale and these were snapped up by members and signed by the author.

Mrs Gwen Appleton enthralled members in July as she explained her travels in search of the 'Real India'. This had started as a simple holiday visit to Goa and had developed into a regular programme of visits as a helper at the village school as well as further ventures into other parts of India.

Two guests were at the August meeting - Sgt Simon Woodrow of Thames Valley Police and Murphy. This German Shepherd dog was impeccably behaved as his handler explained the training and use of these dogs within the work of the police force. Murphy started work at the age of two and will probably retire at about eight years of age. With help from the other nine dogs in the area, a total of some 2000 arrests were made involving dog tracking last year alone. They clearly form a very valuable part of the service.

Among the business items President Joy Davis reported that she had expressed our serious concerns about the proposals to reduce the frequency of breast screening for women in the area. As we know personally of people who have had to have major surgery even with two yearly visits, the thought of an extra year is quite unacceptable. Members will continue to press for

this very clearly needed programme to continue in its present form.

Secretary Mary Dawson had attended the AGM in June and had thoroughly enjoyed the entire event which was as usual very well organised.

Members had completed a sponsored walk on behalf of Macmillan Nurses and a cheque for £50 had been sent off. The Annual Village fete had raised a total of £3500, the major portion of which had this year been distributed to various charities. WI members had worked hard on various stalls and exhibits to contribute to the success of the day.

Senior residents of the village community have been invited to the Village Summer Lunch which takes place on August 23rd. Definitely a very busy and enjoyable time - set to continue into the rest of the year.

Mr Nicholls from Wendover was the speaker at Speen WI's September meeting. He led everyone along the waterways from Wendover through Halton and on to the end of its route pointing out all the sites of interest and talking about the history of the area. No one was out of breath at the end - simply because this all took place in the Village Hall with a selection of slides of old and new sights and even some water-colours for good measure. It certainly inspired members to go and explore some parts of the towpath and see for themselves.

President Mrs Joy Davies thanked all who had helped at the Summer Lunch and invited members to come forward with ideas for the future. Members were given information about local Farmer's Markets in the area and also offered the Fair

Traders Catalogue. Two members will attend the Council Meeting in October and several are going to the Group Meeting to be held in Prestwood. A Team is being entered for the Village Quiz on October 20th. A collection is to be held for the Associated Countrywomen of the World (ACWW) with these 'coins for friendship' going to help with projects such as waterwells and workshops to help women in developing countries to improve their lives.

Next month's meeting will look at Science in a Picnic Basket with Mrs Muriel Rutherford and as usual visitors are welcome to come and find out what is in store. *By Jean Morris*

Thursday 2nd November

Annual Meeting
Pot Luck Supper.

Bloom of the month

Thursday 4th December

How Pagan is Christmas?
M. Leslie Grout
Comp. A Christmas Card
in any Medium.
Bloom of the month

Speen Lace Day
Saturday 28th Oct.

Speen Village Hall
Morning Visitors
welcome
£1 including coffee and biscuits

PRINCES RISBOROUGH SCHOOL July 2000

Sincere thanks to the many parents, grandparents and friends who donated contributions towards the £50,000 we have to raise as part of the bid. I am pleased to say that we are well on the way and I am hopeful that we will have the full amount by the bid date in October. If we do not manage to raise the full amount by then, we will continue our efforts and try again. The next date that the school can submit a bid is March 2001.

I am very grateful to Ercol Furniture and Hynos who have become the school's major sponsors, and to Leo Laboratories and Seda UK who have given very generous donations that have moved us significantly nearer our target. However, we still require further sponsorship and should you have any connections with local firms who may be willing to help, please let us

know. You can telephone on 01844 345496 and we will be pleased to help.

Raising money is just one part of the bid; the other side is to undertake a comprehensive curriculum analysis and plan for action, which will enable us to raise educational standards further. This will be completed by the end of the term. The third element is to link many of the school projects with projects in the local community. As well as initiating our own projects we are also joining forces with Adult Education and Youth and Community to develop some exciting ventures to take place over the next few years.

Thank you again for your interest and help.

Gaynor Hartle (Headteacher)



TREATS II

A Tradition of Good Toys!



TREATS II

5-7 Duke Street
Princes Risborough
Bucks. HP27 0AT.
Tel: 01 844 344354 Fax: 01 844 274540

TREATS II, the greatest selection of toys in the area!
Scientific & Educational

SPEEN POTTERY

Tel: (01494) 488 206

DECORATIVE EARTHENWARE

by Tessa Rubbra



The track leading to SPEEN POTTERY runs down a lovely secluded valley just outside the village of Speen. The Pottery and Showroom is part of an old cottage with a delightful garden. There is parking space at the pottery.

On display in the showroom are examples of beautifully coloured and fine tableware. Special Commemorative Plates and Bowls can also be made for Wedding Presents, Anniversaries and other occasions that need to be remembered.

The Pottery is open every day, but if you want to see Tessa to discuss an order it would be advisable to ring before coming.

Tessa holds pottery classes in her workshop for groups of 3 people, mornings or evenings. Ring for more details 01494 488 206

Valley Cottage, Highwood Bottom, Speen Bucks. HP27 0PY

SPEEN MILLENNIUM MARQUEE

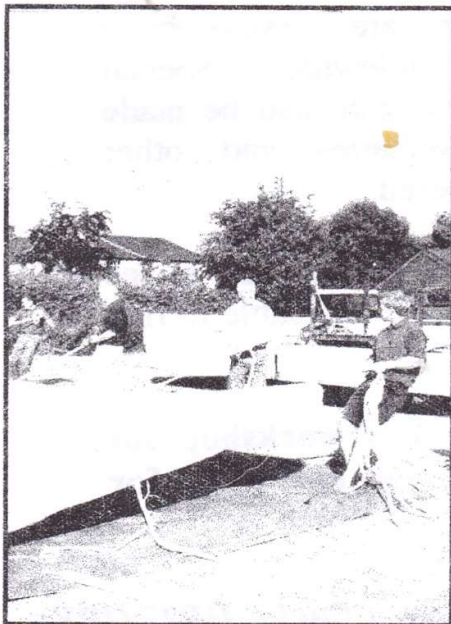
The Village has purchased a large marquee. John Holmes explains the reasons and the plans for its use.

Several village events organised each year, are being held in the Village Hall. The Hall is in good order but is often too small for the size of events. Consequently, village organisations are considering going out of the village for their events or hiring a marquee. Marquees are hired for the Fete and several other village events.

Our usual providers have been the local Scouts and Guides groups. However, the old marquee hired by the Speen Guides is no longer serviceable. The Wycombe Scouts marquees are becoming expensive, and they could not supply marquees for this year's village Fete. We are therefore now having to use commercial marquee companies and pay commercial charges.

After much discussion it was agreed that we should acquire our own village marquee in this millennium year.

An attractive 60 ft x 40 ft, three year old marquee, was purchased at a total cost of £5,900 just in time for this year's Magical Millennium Fete.



A management group attached to the Playing Field Association and a team of trained, volunteer erectors have been established.



The benefits to the village of owning the Speen Millennium Marquee are:-

- It is an additional facility to complement the Village Hall which holds 70 people. The marquee can hold 120 people.
- It reduces the cost to village organisations of hiring tents for village functions.
- It will generate income for the village through hiring out the Marquee.
- The erection and dismantling is an occasion for further community activity.

A fund raising campaign led by Stuart Newman has raised £4400 through donations from 28 generous local people. Benefactor's names are displayed (if they wish) on an elegant board which accompanies the Marquee to every event. Further donations are welcome as we have not yet recovered the cost.

Hiring out the Marquee will generate income to pay off the cost, and then to provide a fund to support village activities. The first hiring was for North Dean fete and our newly formed volunteer erection team coped magnificently.

For information on availability and cost for hiring the Marquee contact John Holmes (Tel: 01494 488420).

LIFE IN THE COUNTRY ISN'T A BED OF ROSES

As Reported in the last issue of the S & ND News, the new Rural Stress Relief Programme was launched on 21st March 2000 by Bucks Community Action in association with The Samaritans, The Rural Stress Information Network, Citizens Advice Bureaux and the Royal Agricultural Benevolent Society. Since then we have received quite a few requests for help and are pleased with the results so far. We are working hard on distributing and advertising the programme, so I hope that you will soon see signs of the service around our area.

Look around our two villages and what do you see? Peace and quiet; green fields and grazing cattle; farmers going intently about their work together with the stereotypical cottages and houses with 'roses round the door'? This is probably the ideal vision of the British countryside. Indeed, we are fortunate to have a shop and post office when many other villages have to go without. However, public transport is practically non-existent, there are no major banks or cash machines, and Post Office opening hours are limited. Please let me assure you at this point that this is not a criticism, just an observation.

Although all looks '*extremely rosy*', behind the scenes in many rural communities there are many people experiencing extreme difficulties. Young and old people and those without cars are unable to go into town for a night out because they can't get there without a lift. Expensive fuel makes school runs more costly. Closures of pubs, banks and, sometimes, schools adds to the stress of everyday life. Farmers are being 'squeezed' harder every year until many face ruin and bankruptcy after generations of working the land. Signs of affluence do not mean peace of mind and the '*Rural Ideal*' brings pressures and stress to proud and sometimes stubborn people. This is a proud stubbornness, born from years of coping in often difficult circumstances, where they have been at the mercy of the elements to produce good harvests. They have survived and won through most of the time. These pressures and many more are sometimes bringing people to the

brink of their existence and in many cases it results in suicide. Please don't 'Smile Outside and Cry Inside' There are people that care enough to be there for you, or someone else, that you feel may benefit from this service. We will accept calls on behalf of someone else - (third party calls) All calls strictly confidential.

Just a reminder of those numbers again
Rural Stress Information Network

01203412916 Office Hours Only

The Samaritans 24 Hours EVERY day

0845790 9090 National No (local call rate)

01494 432000 Chiltern Branch Direct

Citizens Advice Bureau's

Amersham, Aylesbury, Chesham & High Wycombe.

See Phone book for your local number.

Royal Agricultural Benevolent Society

01865727888

01865202025 (Fax)

Bob Wheeler, North Dean, on behalf of the Rural Stress Group

FUND RAISING IN SPEEN AND NORTH DEAN SPRING/SUMMER 2000

Earlier in the year we reported on the success stories of Christine Symondson and Kate Slade who cycled or ran for a sponsorship totally £5,000 between them.

The two charitable collections during April and May were Save the Children raising £188.12 and Christian Aid raising £627.72. There were of course others such as the Red Cross, the Children's Society and the Lifeboat appeal. It would be nice to know how successful their charity weeks were.

There are many other activities going on all the time, ranging from the Ladies Night at Lacey Green raising over £800.00 to Sarah Taylor's Weekenders open house for The Diabetic Society raising £100.00.

We are not always aware of charity events. It would be great to know how much these good causes raise. Please let me know (Tel Suzi Rose on 488 696) and we can publish the results.

Finally, the Speen Village Fete Committee is very proud to announce that this year's fete raised over £3,700 which means that Wycombe's Paediatric Department and The South Bucks Hospice will both receive £1,500 in the near future

By Suzi Rose

chatg
my thoughts about leaving ^{Speen}
I will miss all my
friends that will go
to a different school
and i will miss my
teachers. But i will
be happy to meet some
new friends. I'll be
happy for all the
children. I'll miss
My best friend Oliver.

Thursday 6th JulyMy thought about leaving
Speen school

I will miss painting and sewing.

I will miss lunchtime.

By Noreen

I will miss some of my friends that are not going to
St Johns school.

I will miss the school and the classroom.

I will miss apparatus.

I will miss the teachers.

I enjoyed reading big books.

I will miss the work that we did.

I will miss the things What we did.

I will miss dancing.

I enjoyed playing on the climbing frame.

I will miss doing a pool dancing.

**Children
leaving
Speen
School talk
about what
they will
miss.**

My thoughts about leaving Speen School

By Alana

I will miss walking to school because I will catch the bus.

Also I will miss Maths. and Art I will miss seeing my money at

lunch time I will miss the playground also the teachers and the

School I hope St Johns is nice. and the teachers I will miss my friend

Kristine who is going to Norway I think the computer games will

My thoughts About
Leaving Speen School

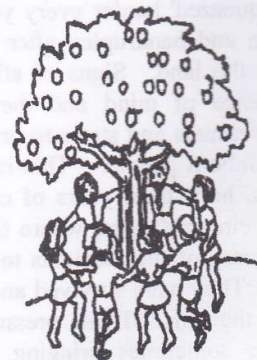
I will miss the teachers and the school.

Also the play around. I'm very
excited but sad of leaving. Iwill also miss the people who are
not going to St Johns. I will

miss maypole dancing and reading

big books together.

By Sioban



NORTH DEAN NEWS

Twelve ducklings were hatched in comfort and style in a south facing border close to North Dean House. Thirteen eggs were laid but mother was either a tad superstitious or she knew her limitations, because the thirteenth was rejected by her. Her days of dedication and patience resulted in a fine family of twelve.

When it was time for the first swimming lesson she escorted them all down to Mr Ryman's swimming pool. Once all twelve were in the water she appeared to panic and her calls of distress attracted the attention of Mr Ryman who fished them all out with his pool-cleaning net. No sooner were they all back on dry land than she ordered them back in the pool.

During this stressful time the drakes (two) were enjoying the peace and calm of Mr Ridgeley's garden pond just along the road, paying occasional visits to the family.

Shortly after the departure of the ducks Mr Ridgeley's pond became home to a family of moorhens. Life for the chicks started in the roadside ditch just by Mr Ridgeley's house, but after a couple of losses to her brood, probably to the farm cats, she sought the sanctuary of the garden pond.

When I first saw the chicks I mistook them for leaves from the red maple which overhangs the pond, they were so tiny. Watching them swimming in the pond, with only their tiny heads visible weaving in and out of the lily pads, was such a delight. Rearing the chicks was very much a joint affair with both parents feeding them.

Another nest has been built of lily leaves and stems floating on a lily pad, with the combined effort of both male and female. We shall have to wait and see.

By Lillian Cash

NORTH DEAN PLAY SCHEME

When me and Lester got to the play scheme we were very nervous. When I got there I noticed that a lot of my friends were there playing. When they saw that I was there I was surprised how happy they were. I knew a lot of children from Speen School, and I knew some children from The Downley School. I went to go and play with them, but then it was register time. My name was near the top of the list. After the register they explained what was going to happen that day.

I did some braids for your hair. I liked doing the hair braiding on Charlotte Boumont. I used pink and white wool joined together. I used really soft pink wool and really light red. I have a hair braiding kit at home which tells you all about it. I made an apple pie and a little cake, because I really like cooking. I ate the little cake and Mum ate the apple pie.

I made some friendship bracelets by plaiting 3 pieces of wool. I used all different colours and I made quite a lot of them. A lot of them were for the leaders of the play scheme. There were lots of leaders to help us do things.

I made a little yellow ant from yellow tissue paper and a balloon that was already blown up. It was brilliant. I loved it.

We had a water fight. First when we started it felt like you could never stop. It was a strange day to have a water fight because it wasn't nice but not raining. The first one to soak me was one of the leaders. We used bottles and balloons full of water. At the end there was a flour fight. I went to the play scheme last year and I'm definitely going next year.

By Ella Tipping aged 8 years

I went to the play scheme. I made a shooter. I made it with lots of pieces of wood. I used a little thing, and she told me to stick it together. I used a stick and a pot of glue, and put it on one piece of wood.

I made a rainbow badge. I did it with lots of colours. I coloured with pen on the badge, but I lost it when I played football.

I went pond dipping, but we didn't find anything, because it was the cows water. We went for a walk then the big blue tractor came. And we had a water fight, we all got soaked.

By Lester Tipping aged 5 years

North Dean Photographic Archive Project

This project was undertaken by a group of local residents for North Dean Village Hall Committee. The aim was to produce a photographic archive of the hamlets of Upper and Lower North Dean at the end of the second millennium in 1999 and start of the third in 2000 AD.

All North Dean Residents made their Houses and Families available for the Photographers so that The Millennium Album, which is entitled "North Dean Village - Year 2000 is a true snapshot of the Village at 31st December 1999. The Album is kept in a case at North Dean Village Hall and may be borrowed for short periods against a refundable deposit.

There are 89 Homes in the village. These have been listed alphabetically in the list of addresses; each has been given a unique number. This number is also on the O.S. Map showing the location of each dwelling.

Five well known village endeavours appeared to be worthy of some individual treatment because of their special status within the village. They are

1. Beechdean Farms, combined with the selection of aerial photographs taken by Ian Barlow to give an impression of the beautiful North Dean valley and the surrounding countryside..
2. Beechdean Dairies and Ice Cream.
3. Piggots Stained Glass Studio.
4. Piggots - History & Summer Music Camp.
5. The Village Hall and the Committee.



The Cottage built 2 to 3 hundred years ago

Individual Dwelling description sheets and colour photographs.

Each dwelling has been allocated two sides of A4 paper. One side contains descriptive material about the dwelling and its history where known, with a recent photograph; the second side tells of the residents at millennium day with their picture.



Miss Rene Ayres. The oldest Inhabitant
Lives in The Cottage

The nine aerial photographs which follow were taken by Ian Barlow, during May 1999 and show the Village in late Spring-time. They demonstrate clearly how the Village is surrounded on all sides by the protective farmland.

Copies of the Album and a Compact Disc of the contents are available for sale in aid of North Dean Village Hall for £65.00 and £22.50 respectively from North Dean Village Hall Committee.

Pat & John Townsend August 2000.

There are two videos available of local events.

Opening of the shop May 1998

"It's a useful little Shop"

Cost £7.50 {£2.50 to a Speen Charity}

Speen Millennium Fete.

On 8th July 2000.

Cost £9.00 {£3.00 to a Speen Charity}

Please contact Wal Plummer
488882

Applegate, Studridge Lane

SURGICAL CHIROPODIST

HOME VISITS BY APPOINTMENT

Telephone
NAPHILL (01494) 562569

Mrs Rosemary Stone MSSch MBChA



SR Farm Contract Services

HEDGE CUTTING—FENCING
GROUND EXCAVATION WORK
PADDocks AND LAWNS MOWN
GENERAL GARDEN MAINTENANCE
LOGS SUPPLIED

Tel: Steve Rogers—01494 562041

Beau Vista, North Dean, High Wycombe HP14 4NH

Have you read this book
yet?

Copies still available.
“A HISTORY OF SPEEN”
See page 33 for details.
Hurry while stocks last.

RICHARD FERGUSON

BUILDERS

All building work
undertaken

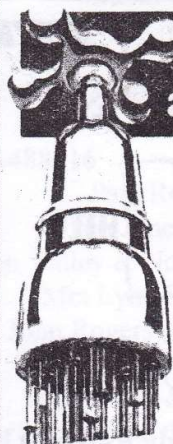


- ◆ New houses
- ◆ Extensions
- ◆ Renovations
- ◆ Fireplaces
- ◆ Fitted Kitchens
- ◆ Bathrooms
- ◆ Patio's
- ◆ Decorating
- ◆ Electrical work

16 Moseley Road
Naphill
High Wycombe
Bucks., HP14 4SQ



01494 562954



Is your water as hard as nails?

60% of British households suffer from
these sure signs of hard water problems:

- Blocked shower heads
- Slow running taps
- Scum marks in baths and basins
- Excessive use of household cleaners
- Harsh, hard towels and clothes
- Increased water heating bills
- Scaled-up kettles and appliances

Nail all your hard water
problems by installing
an EcoWater system.



Contact:
MARION BENNET

Sterling Softeners
WATER TREATMENT SPECIALISTS



Sterling Softeners,

Courts View House, North Dean,
High Wycombe, Bucks., HP14 4NN
Telephone/Fax (01494) 565232

NORTH DEAN MILLENNIUM DAY EXHIBITION

As an integral part of the North Dean Village Day celebrations, it was decided to put on an exhibition to portray the Village both past and present.

The photographs and information were divided into: - North Dean at Work showed locals using old farm machinery and various tools: North Dean at Play showed seaside frolics, fancy dress, celebrations, cricket teams and other local events: North Dean at War showed the local Home Guard, servicemen returning from the Second World War and the celebration dinner. North Dean families were shown together with simple Family Trees. The Rogers family of the Turnery were featured in connection with chair making and bodging: The Hatt family in connection with both the Sportsmans Arms, and George Farm in Speen.

For such a small village, a surprising number of residents have been important and a section was devoted to these people: - Dilwyn Knox and his work on the Enigma Codes during World War II; Gilbert Spencer artist brother of Sir Stanley Spencer; Eric Gill, sculptor and developer of Sans Serif Type; Archie Crawford of Crawford biscuits; Viscount Lord Simon a senior peer still sitting in the House of Lords; Edward Nuttgens of stained glass fame; Ted Turner known for his engineering expertise; George Holt Thomas a pioneer in aviation; Benjamin Seebohm Rowntree a pioneer in labour management and the

study of poverty; Richard Sydenham who was High Sheriff of Buckinghamshire in 1727 and George Langton Kendall who held the same position in 1986.

In addition, there were demonstrations of lace making and of tambour beading, which were activities followed by many of the village ladies in the past. There were also displays of old lace, artefacts and woodworking tools and many other relics of the village.

Local businesses were represented by Beechdean Farms, Beechdean Dairy Ice Cream and the Stained Glass Studio, who staged very informative and interesting displays.

Fred Burnham had lists of all the butterflies, birds, flowers, trees and wildlife to be found in the valley and he was able to add two more birds to the list. Eye-catching displays were mounted by The Bat Preservation Society and The Badger Preservation Society and Berks, Bucks & Oxon Wildlife Trust.

Also on display, were updates on the Third World Project in Uganda and the North Dean Millennium Tapestry.

The exhibition attracted so much interest that it is intended to mount an extended version in the New Year so keep a watch for news of dates and times after Christmas. If anyone has more photos or information regarding the hamlets of Lower and Upper North Dean please contact Pat Townsend at Bohemia - telephone 562302.

WE'VE MOVED!



B. A. HOGG (Motor Body Repairs) Ltd.

Unit 3
Fairview Industrial Estate
Kings Road
High Wycombe
Bucks HP11 1RY.

Oh Yez! Oh Yez!
What Can We Do for You?

- ◇ Free estimates, at any location.
- ◇ Free collection and delivery service.
- ◇ Easy access and ample parking.
- ◇ Account facility available
- ◇ Fast & friendly service.
- ◇ Return to home service.
- ◇ Company & fleet service.

Interested?

Ring: 01494 512020 (3 lines)



**ZURICH
INSURANCE**

ESTABLISHED 1972

THE INSURANCE SERVICE

churchill



Who's Who in the area ?

Speen & North Dean News Editor	Glenn Hart	488528
Speen Residents Association	Gordon Hall	488331
Speen W.I.	Mary Dawson	488222
Speen Horticultural Society	John Payne	488259
Speen Playing Field Association	Marion Tozer	488497
Riding for the Disabled	Gloria Holmes	488420
Village Hall Committee, Speen	Catherine Butler	488412
North Dean Hall Committee Chairman	John Rogers	562041
North Dean Village Hall Booking Secretary	Megan Chinn	563074
Speen Pre-School	Kay Morgan	564825
Speen School PTA	Amanda Cleaver	488288
Speen Tennis Court	Cherry Seekins	488355
Guides	Pauline Hall	488372
Baptist Church	Andy Gower	488758
Speen & N.D. Good Neighbours	Margaret Jones	488246
Millennium Committee	Martin Stockley	488101
Mother & Toddler Club	Caroline Crossley	488269
Neighbourhood Watch	John Radford	488203
Speen Church of England School	Mrs Nayna	488321
Speen Stores	Sharon	488258
Fete Committee Chairman, Speen	David King	01844 344839

Hughenden Parish Council Chairman: John Rogers 562041

Lacey Green Parish Councillors : Don White 488437

Peter Simmons 488016

Wycombe District Councillor : Paul Rogerson 488315

Buckinghamshire County Councillor Tim Jones 01296 622975

The ward Councillors for Hughenden Valley & North Dean Are:

Mrs Ann Hildesley 01494 563374 Mrs Lynn Sullivan 01494 563620

Chris Morley 01494 562714 John Rogers (Chairman) 01494 56204

The Council Office is open to the public on Monday, Wednesday & Thursday from 9.30 to 11.30.

During holiday times the contact numbers will appear on the office notice-board.

Contact Numbers for the Police in the area:

Sergeant Russ Murden 01494 717799

PC Paul Sorensen 01494 715352

Inspector Martin Bolton 01628 816910 (responsible for Hazlemere but based in Marlow)

Local Control room 01494 465888 Local Help/Crime Desk 01494 736735

Fax Numbers: Hazlemere 01494 686299. Marlow 01628 816921

Help/Crime Desk 01494 736737

All roads lead to JNP

www.jnp.co.uk

Helping you buy or sell your home in The Chilterns and South Buckinghamshire



ESTATE AGENTS, VALUERS, SURVEYORS, FINANCIAL ADVISERS

28, High Street, Princes Risborough
01844 345666

Also at Prestwood 01494 866000

■ Hazlemere 01494 716000

■ High Wycombe 01494 528000