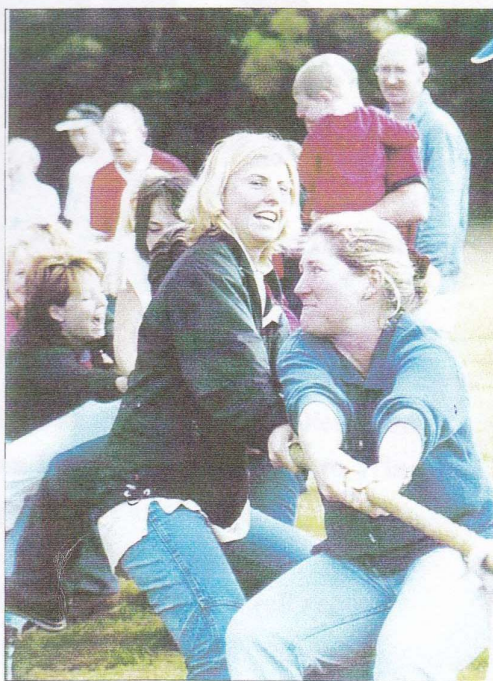


IN THIS EDITION



plus
**GREAT NEWS FROM
SPEEN SCHOOL**



Your local Estate Agents

High Wycombe Office
31 Crendon Street, High Wycombe
Bucks. HP13 6LJ
Tel: 01494 451010

Hazlemere Office
1-3 Penn Road, Hazlemere
Bucks. HP15 7LN
Tel: 01494 711777

Prestwood Office
2 Wycombe Road, Prestwood
Bucks. HP16 0PW
Tel: 01494 868600

Residential Lettings
1-3 Penn Road, Hazlemere
Bucks. HP15 7LN
Tel: 01494 451050

www.philipgreen.co.uk

***Professionals in the sale and rental of quality homes in
Speen, North Dean and the surrounding Chiltern Villages***

Editor's note

Potential contributors please note that we are interested in all that goes on in our two villages, including advance information about planned events, and will endeavour to include most contributions, space permitting. News of village weddings and births would also be welcome – particularly if you have a photograph. If you have access to a computer, items are best received by e-mail or on floppy disc (preferably with documents in Word and photos as a jpg), but I can also scan in most other documents or photographic prints.

My e-mail address is majos@btinternet.com, telephone 01494 488101, address Driftway House, Coleheath Bottom, Speen HP27 0SZ.

Martin Stockley

Copy date for the next issue

October 25th 2002

**and our aim is to distribute
approximately 4 weeks later**



The Holiday Homes Website
Villas, Apartments, Cottages and Gites

euro-rentavilla.com

Looking for a
holiday home to rent,
or do you have one to
let out?

**Take a look at our
web site**

www.euro-rentavilla.com

0044 (1) 494 488190

Email info@euro-rentavilla.com

Holiday homes always required in England,
France, Ireland, Spain, Italy & other countries

Contents – issue 27

The Golden Jubilee in Speen	4-6
News from Speen Baptist Chapel	8
Speen & North Dean Golf Day	9
The Golden Jubilee in North Dean	10
75 years of Music Camps	10
A tribute to Bill Chinn	11
Speen School News	11
Charity News	12-13
Speen's marathon man	14
Letter to the editor	15
Bucks Art Week	17
Speen Pre-School News	19
Speen Village Hall News	20
Playing Field Matters	22
Wildlife Watch	23
Speen Horticultural Society	24
Speen Rolls parades before the Queen	25
Lacey Green Parish Community Plan	27
Local help for education in the Third World	28
Music-making in Speen	29
WI News Report	30
Football report – Speen trounce opponents	32
A night at the Queen's Jubilee Prom	32
Speen builders contribution to Windsor Castle	34
Hughenden Parish Council report	35
The Pied Piper of Speen	36
Wycombe District Council report	37
What's on	38
Who's who	39

Cover photographs

Celebrating the Golden Jubilee in Speen with a Jubilee Tea

Same day - ladies' tug-of-war team building up an appetite

The Glis glis, or edible dormouse (but don't try it), found locally in the Chilterns

The Golden Jubilee in Speen

THE CLASH OF THE TITANS

It was obvious something was happening but not clear what. The code word was F-Day. Several weeks before F-Day, Speen appeared to be in the grip of preparations for some ancient ritual. At night, shadowy figures could be seen, by those rising early enough, running through local woods carrying spoons with oval objects on them, hopping in polythene bags or pitching irregular objects on curved trajectories. In the King William, much shouting could be heard, through which - by sheer repetition - certain phrases became burned into the subconscious. "It will be all right on the day". "Play it off the cuff". "Bring a plate and spoon". "Keep our feet on the ground". "Project master plan". At F-Day minus 2, Manager Holmes and his rag-tag army of movers, lifters, pullers, pushers, bangers, cutters, trimmers and - very importantly - scrubbers, assembled to achieve the metamorphosis of Speen Playing Field from meadow to metropolis. At F-Day minus 1, ThinkofEverything Supremo Symondson and FixIt Walsh could be seen in the distant reaches of the field earnestly discussing optimum grass length, performance metrics and the effects of wind direction.

And then on 3rd June in annus mirabilis 2002 on Speen Playing Fields, F-Day dawned. All was revealed. Six teams of resolute athletes appeared and prepared for a gladiatorial encounter. The order of battle accorded with LetsKeepItPractical Symond's principles and VillageHistorian Johnson's recreated historic entities, so as to maximise local esprit de corps as:

- Team A (Blue) - "Hampden Church Road".
- Team B (in pretty canary Yellow) - "Around the Village".
- Team C (Green) - "Parslows".
- Team D (White) - "Cottage Farm".



The Jubilee Planners consult.....

- Team E (Red, White & Blue) - "Backlands", dressed very patriotically in the colours of our national flag. Would this help them? Read on to find out.
- Team F (resplendent in Red) - "The Hill" (please note that the team name was not "Over the Hill").

The committee had selected Olympic style events to test competitors' stamina, endurance, teamwork and determination to the utmost. Anything wimpish was ruled out. There was a sack race, a doughnut nibbling race - which offered the chance of a mid-afternoon snack, a skipping race, a three legged race - with its obvious dangers to anyone over the age of six, an egg and spoon race, a dressing up relay race, a bobbing for apples race, an infuriatingly difficult welly toss, skittles, a very dangerous egg catching competition, toss the bale and toss the horseshoe. A tug-of-war completed the physical exertion. All of this was underpinned by limitless Nordic enthusiasm and experience: apparently, there are countries on the planet where sticking one's head in a bucket of cold water and humping huge straw bales 10 metres skywards are national pastimes!

Eyeball to eyeball confrontation began. The or-

ganisers' objective was to keep competitors under sustained pressure. After the exhausting track events, there was to be no respite. In the outskirts of the stadium, the taskmasters running the field events waited for their victims. Competitors rose to meet the challenge; coloured phalanxes moved from one trial to the next. One field event demanded particularly high levels of self-sacrifice. Team captain ICanTakeAnyPunishment Fisher led from the front, received a multitude of impacts from broken eggs in the face and upper body without complaint – and then received an insignificant points score as a reward.

In the sack race, the sacks could not withstand the level of punishment and several disintegrated. This enabled one team, which incidentally finished quite high in the final rankings, to run surreptitiously from inside the sack, keeping the sack as low as possible to disguise the rapid movement of legs. One four year old found it all too much during the egg and spoon race, opted out and had to be coaxed to continue, when overtaken by a lycra-clad 20+ year old male of another team (that incidentally also did well in the final rankings) doing a Linford Christie in the adjacent lane. Another team gained a dubiously legal but competitive advantage in this race – and also did well in the final rankings – by pulverising its hard-boiled egg so that it collapsed onto its spoon like a limpet. The event organisers thank those runners that showed

consideration by agreeing not to run in spikes. In the welly hurling competition, the C (Green) HellforLeather Team produced three gigantic Olympic-standard throws, which will doubtless ensure entry in third millennium record books.

ThinkofEverything Supremo Symondson had decreed that judging throughout was to be scrupulously fair. However, the race referee's post-event performance evaluation of the doughnut competition did reveal certain discrepancies. In one heat, certain nibbled doughnuts were removed before the referee's micrometer could be deployed. Other competitors did not help their cause by carrying away their partially eaten doughnuts to finish in quieter corners. Perhaps the rules were also rather remiss in not defining whether nibbling included swallowing. There was also some difficulty in monitoring what was actually happening inside the buckets during the apple bobbing race. Some competitors managed to transfer apples from bucket to mouth miraculously without getting wet hair. One team claimed to have found an extra apple in its bucket! Was it a coincidence that the winning adult teams in the tug-of-war had the advantage of holding the downhill position?

As the afternoon progressed, competitiveness became tangible. The unbearable tension was finally broken. The final result was close. The "A" alias "Blue" alias "Hampden Church Road" team had won by a whisker. Elder-Statesman Payne presented his newly carved Speen Inaugural Golden Jubilee Plate to its captain, GoForIt Seekins. The "A" Team also collected the prize for the Best Dressed Table, which was awarded by Sandra from Speen Stores.

The Johnston's searching Jubilee "Royalty" Quiz was won by Avril & Peter White.

The Children's Colouring Competition was won by Tara Wood and Bryony Seekins.

Andy Gower said an eloquent Grace. The anthem was sung in unison.

Speen for the Olympics in 2008?

John Oliver



Time out at the Jubilee Candy Stall

Small talk on the Jubilee.....

There are several new children who have come to live in Speen. My grand children Ella And Lester Tiping came in December and some friends of theirs came to live only a week before the Jubilee. Georgia was one of these.

Georgia Holder 10 _{yrs}

What I thought about the Jubilee Funday on Monday 3rd of June

I thought that the Funday Jubilee playing field was very exciting and I think that the races were a very good idea and they should do it again. I liked the donut race it was my favourite because you didn't have to be tall and it was funny. I also liked this race because I won and I was hungry. The race I wasn't too keen on was the sack race because it tumbled you out and it was hard work, but other than that I thought the races were fun and funny. I also liked where they did it because there was a park for the children and it was very spacious. After the races they had a break so that you can go home and get changed for the disco and fire works, also you could get a hotdog for only £1.00 each.

I thought the fireworks were also a good idea because there went to many of them and if you are scared of fireworks then you can go inside the big tent and you wouldn't hear them because the music was loud.

Also when we had races you were in teams of your Street in Speen and you had your own colour team (I was white team) you had to be in either:- Red, blue, green, yellow or white, but one of the teams were all of the colours.

So I thought the Jubilee Funday was very funny and enjoyable.

From

Georgia Holder

Her big sister Lauren wrote:

I really liked the firework display and the food etc. was good. The disco was a good idea and it was a good event to get the community together.

Lester, aged 7, wrote:

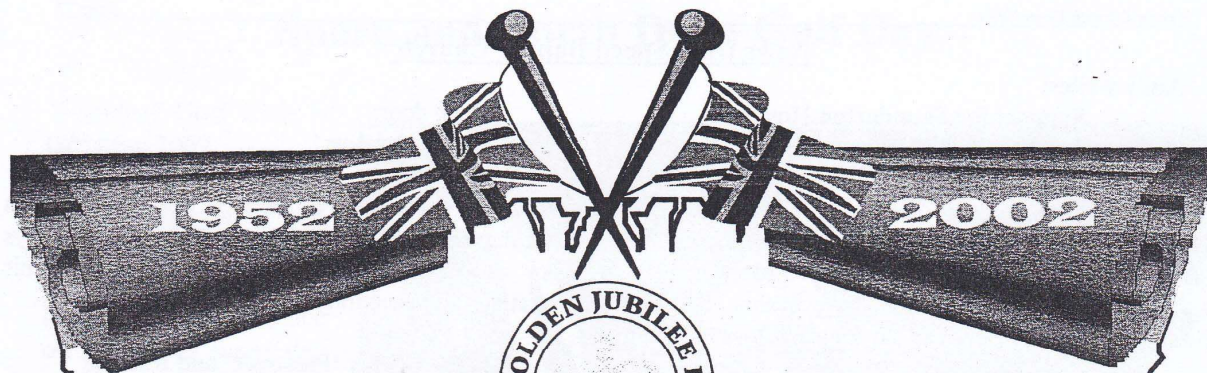
I liked the bobbing for apples and the fireworks. I also liked the disco because I liked the food. I had a go at the skittles.

Ella age 9:

On the 3rd June the funday started, it started with games the games that I liked were the three-legged race the skipping race, sack race and the doughnut nibbling.

I thought that everyone got entertained well I found throwing the bale very hard to do but I thought that the children doing the bale did very well. Everyone took part and had a really good time. Then many people went home before the disco and the fireworks were great. The big green one lit up the whole playing field and you could hear the echo of the bang.

Glenn Hart



**SPEEN
GOLDEN JUBILEE
FETE 2002**

2:00 pm, Saturday, 13th July
on the
Speen Playing Field

Fancy Dress
(Royalty down the ages.)

Grand Draw

Games

Pony Rides

Competitions

Side Shows

Vintage Cars

Tea Tent

Art Exhibition

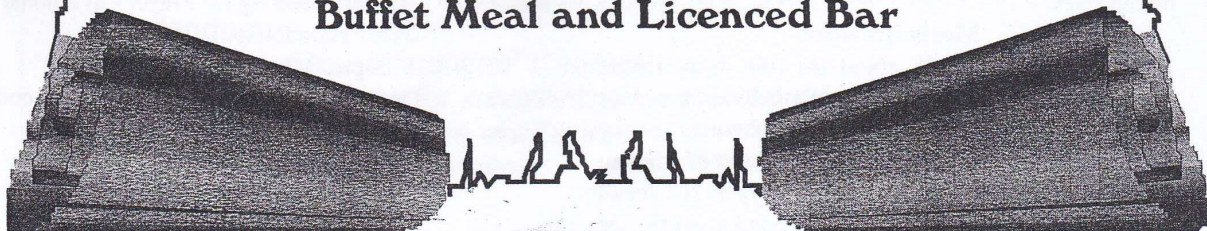
Banjovi Revival Band

Evening:
Big Band Dancing

7:30 pm. In the Marquee

Big Band Music & Dancing

Buffet Meal and Licenced Bar



News from Speen Baptist Church

Andy writes:

Support for Saunderton Hostel

Many thanks for all your ongoing support for the hostel. It is very much appreciated by the staff and residents alike. The word has got around and we even had a car of useful things from London (from Breakfast speakers John & Yvonne Pressdee).



Budget cuts have meant that the hostel can no longer afford to use a carpenter to make repairs to furniture, so a number of men have volunteered to form an occasional working party when things need fixing. It won't be very often but if you would like to help please give me a call.

Ladies' Breakfasts

Its not often that one gets the chance to meet a living Ancient Briton, but on February 9th the Ladies' Breakfast got to talk with a bubbly young Celt called **Bethan Jones** - one of the participants in the televised series of the Iron Age.



This series was part of that popular genre of TV programmes where Twenty First Century people are taken back in time to see how they cope with particular historical surroundings.

It seemed to me that the Iron Age programme was something of an endurance test, but Bethan gave a fascinating account of her time in the project, which she clearly enjoyed despite the challenges, and also how it had encouraged her to take a step upon a journey of faith.

Helen Gee's story was very different. How does one come to terms with past abuse and the end of one's marriage? Helen spoke about the legacy of these things, of rebuilding her life and of finding in a relationship with Jesus, a measure of healing and the ability to forgive.

It was very much a story of hope and new life with a growing freedom from the past. I am sorry if some felt what Helen shared was too close to the bone, or feared it might open painful wounds. Her experience of the love and power of God showed a way through the devastating impact other people can sometimes have on our lives.

Men's Breakfast

David Merriman's talk about his role in an Estate Agent's practice was something of a behind the scenes view. He was well prepared - having obtained special permission to show the MacDonalds advert of what an estate agent has to do to earn a hamburger. If I recall it accurately, approximately 1 second's work, as follows:

Open door;

'Main bedroom'

Close door.

Amidst his explanation of the tools of his trade it was clear that there are ethical issues which are not always easy or straightforward to handle, but that his Christian faith encouraged him to keep on trying.

Good Friday 'Passover' and Ramble

The last meal that Jesus shared with his friends before his arrest and crucifixion was the Jewish Passover - this is the context in which Communion (or the Eucharist as some call it) was originally set. So this year we attempted to get the feel of the meal by recreating it in the chapel.

We shared the same food and other elements of the meal that Jesus would have done with his friends as they gave thanks to God for their forebears being delivered from slavery in Egypt. It was a very moving time - particularly memorable for all were the bitter herbs! - and so by popular request we will do it again next year.

Further fortified by hot cross buns we rambled in glorious sunshine down the footpaths around North Dean and back.

Happening after the summer:

8th Sept - 200th Anniversary of the building.

Preacher the Bishop of Buckingham Rev'd Mike Hill

21st Sept - Men's Breakfast:

Richard Jenkinson from the Chiltern Brewery.

2nd Nov - Ladies' Breakfast:

Clinical Geneticist Dr Caroline Berry.

Also new Alpha Course in October

(Bryn Haworth is back in Bucks with a concert in Holmer Green on 13th October)

Summary of Weekly Church Activities

- Sundays:** 10:30 am Worship for all ages
incl. Creche, Sunday School for 3's-12's
and Teens discussion group.
12:00 Fair Trade Stall in church hall (2nd
Sunday in month).
6:00 pm Worship Group.
- Mon:** 9:00am Meeting for Prayer - at a home
in the community.
8:00pm Beta Course
- Tues:** 7:45pm Alpha Course - 5 Abbotswood
- Weds:** 10:00-11:30am "Time Out"
10:00-11:30am Daytime Home Group
- Chinysnook, North Dean
8:00-9:30pm Evening Home Group
- at a home in the community.

Speen and North Dean Golf Day

Whiteleaf Golf Club –
16th May 2002

The sixth year of golf competition between teams from Speen and North Dean took place on a glorious sunny day at Whiteleaf golf club.

Thirty-six golfers took part in a morning Texas scramble and an afternoon 18 hole Stableford. The results were as follows:

Texas scramble team winners: Martin Shaw, Roger Shaw, Duncan Shaw, Tony Bradshaw.
Runners up: Peter King Reg Taylor, Bill Groves.
Stableford winner: Eric Cash
Longest Drive: Brian Hanson
Nearest the pin: Tony Bradshaw
Team Prize Winner: North Dean 366 points



Dinner at Whiteleaf Golf Club after the match

The day was a great success, splendidly organised by John Rogers, Eric Cash, Dave Evans and Bill Groves.

Next match is provisionally arranged for Thursday 19th September 2002.
Bill Groves

STEVE NEWMAN'S TREE & HEDGE SERVICE

Holly House, Archway, Speen, HP27 0SB
01494 488790

**A friendly, personal service offering advice and free quotations
for all your Arboriculture needs**

- Surveys and reports
- Sympathetic tree reshaping
- Tree thinning to allow more light into your home and garden
- Removal of dead, diseased or dying timber to rejuvenate tired trees and eliminate the worry of dead wood damage to your own and others' property
- Felling or dismantling of trees which are 'past their best' or are in a dangerous condition
- Topping of 'out of control' conifers
- Fruit tree pruning for more attractive and productive trees
- Tree planting and tree relocation
- Hedge cutting and shaping

We are fully insured and provide a tidy and efficient service

NORTH DEAN JUBILEE DAY

North Dean chose Saturday June 1st to hold its Jubilee celebrations. The morning dawned bright, with a clear blue sky and brilliant sunshine. Thirty stalwarts assembled on the hill behind the Village Hall to partake of a champagne breakfast and to enjoy the wonderful view across our Village. At approximately 9.15 a fanfare of music was heard across the Valley from Pigotts. this had been composed especially for the day and was performed by members of the Music Camp. Most of us brought our breakfast pre-cooked, but a few were more adventurous and cooked theirs on site – much to the amusement of the rest of us, as the sausages seemed determined to end up on the grass. A wag was heard to say they must be veggies returning to their “grass roots”. After breakfast and the Bucks Fizz we returned rather unsteadily to the playing field to prepare for the main events.

At 12.30-ish, the unveiling of the Millennium/Jubilee Tapestry took place; this had been intended for the Millennium but due to the work involved in making and putting it together it was finally completed in time for Saturday. The inspiration for this Tapestry came from Dorothy Hazell who organised both the making of it and arranged the funding. Together with a group of Ladies from the Village she has produced a magnificent work of art comprising a quarter of a million stitches and illustrating many different aspects of North Dean.. It is intended that it will be hung permanently in the Village Hall in the near future; if you were unable to be there on Saturday it is well worth having a look at. The Tapestry was unveiled by Janet Johnston, a member of the group and a much loved member of the Village community. Janet is soon moving from the Village (not too far away) to start a new life and our best wishes go with her.

The unveiling was followed by all the children resident in the Village being presented with a £5 Jubilee coin; any child who has not received their coin please contact Eric Cash on 564969

A Bar-B-Cue for over 150 followed, cooked by Peter Brownridge and John Newman, and served by the Committee and friends. A bar serving beer, wine, and soft drinks, was kept

very busy until closing time.

The afternoon was spent relaxing and catching up with the gossip or, for the more energetic, playing football and continuous cricket. The day came to a reluctant finish about 4.30 with a feeling that it had been a successful and enjoyable day.

The Committee would like to thank the members of the Pigotts Music Camp who took part in the fanfare, Desmond Rvman for donating the drink for breakfast, Hughenden Parish Council for a generous grant towards the day's celebrations, and all who helped to make the day the success it undoubtedly was.

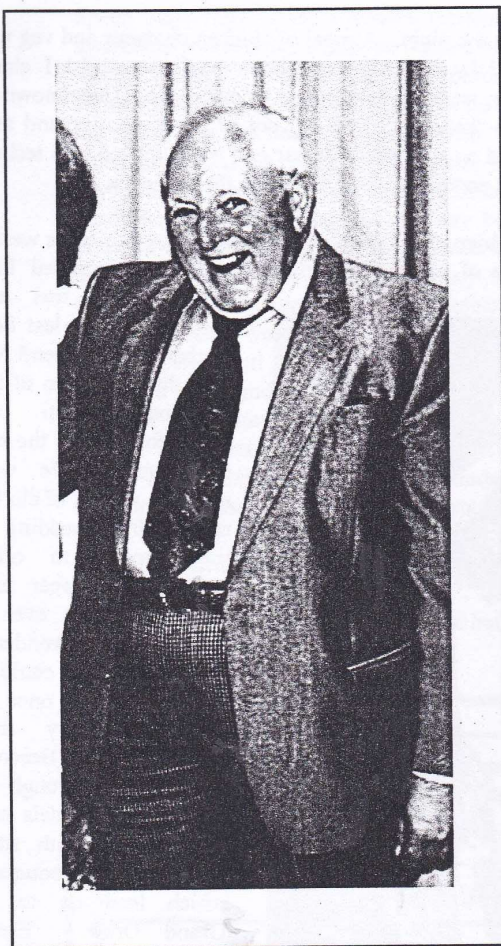
John Rogers – N.D.V.H. Committee

Celebrating 75 years of Music Camps

When the queen was a year old , in 1927, the first Music Camp was held. When she celebrated her Silver Jubilee in 1977 we celebrated our Golden Jubilee and this year we chose the Royal Golden Jubilee Bank Holiday to mark our 75th year. On 4th of June more than 300 Music Campers past and present came to Pigotts (home of Music Camp since 1966) for a party. There was much music (full orchestra and choir - a hundred and twenty plus) with 6 conductors and 6 works - plus one composed specially for the occasion, - and of course a great deal of meeting old friends, gossip and reminiscence and picnics all over Pigotts. Many of the 30 plus youngsters were grandchildren of Music Campers. Old films and photographs were enjoyed and a Nuttgens stained glass panel was unveiled by the oldest music camper. She had celebrated here 21st birthday at the first 1927 Music Camp. Still an active musician, her talks about early camps was an extraordinary link to that time.

Nick Wheeler-Robinson

BILL CHINN



Bill Chinn's passing leaves Speen and North Dean poorer by the loss of a man of absolute integrity, gentleness and kindness. Few of us live and die in a house we have built for ourselves, but he also fashioned a life for himself with Megan, that was based on deep faith, modesty and generosity. How his eyes twinkled...he enjoyed humour and people and music, and gave to all, time and attention. He would perhaps have been surprised that so many came to the chapel to say farewell and honour his memory, but his was the virtue of Christian charity and we recognized in him a truly good man. While we grieve with Megan, her's was the great fortune to spend a lifetime with Bill.

Nick Wheeler Robinson

SPEEN SCHOOL NEWS

It's been a very busy few months at Speen School – or perhaps I should say even busier than usual!

Many of you will already know of the problems earlier this year regarding the question of transfer of our 7 year olds to St John's Lacey Green. Traditionally most Speen School pupils (especially those in catchment area) have progressed to St John's. However, this year St John's were unable to offer more than the 8 places stipulated in their admissions policy and Speen School had 10 catchment pupils seeking places. Appeals failed to change the ruling, although much later a further place became available. Our great worry was that next year we would have 19 pupils eligible for places. The only hope was that parental and school pressure would help to resolve the situation. Letters from parents and the governing body winged their way to the Diocese, the LEA, our M.P., the Bishop, etc. A series of meetings between the school representatives took place, and eventually St John's agreed to increase their admission number for September 2003.

It is worth explaining at this point that church schools (both Speen and St John's are voluntary aided C of E schools) are their own admissions authority, and can, within reason and certain guidelines, set their own admissions criteria. St John's governors had financial concerns which were eventually resolved; and hopefully the two schools will continue to enjoy the strong links and co-operation which have existed for many years.

No sooner had these problems been overcome than Ofsted loomed! Our first inspection was in April 1997 and we knew a second visitation was due! Until one has been involved in the preparation for Ofsted it is difficult to appreciate the work involved. The sheer volume of paperwork which has to be collated, even for a small school, is incredible, as are the hours worked by the staff.

We all know Speen is a very good school, and our first inspection had confirmed that, but these were different inspectors – would they agree?

Well, if you haven't read the report (it's on the web <http://www.ofsted.gov.uk/> or copies are in school) or heard on the incredible Speen grapevines, you'll be pleased to know, I'm sure, that we had an excellent report – so good in fact the school rates among the top 5% in the country. All 4 inspectors were glowing in their praise. Now we have to maintain that position – but with such dedicated staff, governors and parents together with villagers who help the school we will do so.

One of the inspectors asked if we had the champagne ready! I think you can guess the answer!!

Jackie Edwards

Chairman of Speen School Board of Governors

SPEEN SUPPORTERS GROUP STAR IN THE TOWN HALL

After months of planning, the Ladies' Fashion Show in early April was a great success. During the day, chaos reigned supreme. Flowers and greenery by the bucket load, grow bags, pot-plants, soil, and ladies with fast moving seateurs dominated the scene during the morning. By lunchtime a vast box containing the TV prize and an office chair plus tombola machine formed the early raffle table. 2pm heralded the arrival of models and rails and rails of clothing, boxes of hats and suitcases of bits and pieces, all being wheeled round the catwalk and into the back dressing rooms. The dress rehearsal was delayed until nearly 3.30 when Catering had planned to lay the tables. All this time the Swan Theatre's technical crew were testing lights, blasting the ears with the music and opening and shutting the blinds. The dress rehearsal was quite simply a mess! By 5pm I was able to clear the catwalk and run through my own demos and lectures, showing off madly with my radio mike and "bot-pack" in my jeans.

At 6.30 the doors opened and smartly dressed ladies started to appear. Gasps of genuine appreciation could be heard because the hall now looked fit for a wedding reception, decked in vast floral arrangements, beautiful table decorations and atmospheric lighting. A select band of exhibitors displayed wares ranging from lingerie, rainbow silk scarves, aromatherapy goods, and exquisite handmade jewellery for perusal during the wine reception. Guests were encouraged to take their seats in time for the welcome and introduction by Christine Oliver. Gloria Holmes, Sue Taylor and Christine Symondson did sterling work with the remains of the Spring Grand Draw, taking over

£500 on the night. A meal of chicken chasseur and veg was followed by individual raspberry pavlovas whilst I clambered on stage to deliver the colour demo. Unbeknown to me, my "bot-pack" had run out of battery power and as I twittered on suddenly my rear end was attacked by a technician - it certainly raised a titter in the audience.

The fashion show went swimmingly. The 8 models were a mixture of ages, sizes and colouring and included Pam

Graves who was our signer for Alice last September and her friend Naz who displayed two of her traditional Asian costumes for us after the colour demo. We were shown a variety of clothes ranging from wedding attire through to office wear, leisure wear and, for the finale, evening wear. This was wonderful for me because I could sit and watch for once as Christine Parry from Manhattan in Beaconsfield took us through the outfits. The models were all rewarded with small colour-coded bouquets, which lead on to the Grand Draw. Eleven prizes were given out in the end with a nice mixture of winners from Speen and others round about. Christine Oliver took the stage for a final time for thanks and farewells. We threw everything into our cars and took off for Speen an hour later. As this was my very last show, I was delighted to bask in the success over a few glasses of wine with some of the committee who joined me until the early hours. Combining the "do" plus the Grand Draw we raised just about £2,500 which is excellent



Louisa Rose modelling at the show

MARATHON MAN

Ian Waterman has run the marathon many times before but this year he volunteered to raise funds for Speen Supporters Group's hospice movement. As awareness is one of our aims, we wanted him to run in our "colours". Not only was he prepared to get a seriously pink T-shirt printed for us but he was willing to run in a daft headband decked with "floating" butterflies. Alas the marathon took place just a few days after the Fashion Night so a sensible piece of headwear was thrown together the day before the event in time for the action shot. Unfortunately I thought the butterflies looked like they had been swatted rather than supported, which defeats the optimistic message we try to put across regarding the hospice movement! Ian told me he kept the thing on all the way round the route, which he managed in just over 3 ½ hours. He also told me he got some strange looks from other men running near him. Pink? With butterflies? Must be left-handed... His sponsorship raised £2,000 and Ian would like to thank all those in Speen who gave their generous and enthusiastic support. Well done Ian!

We had plans for a Teddy Bears' picnic but decided

to postpone this for a while as there are so many other events at this time of year. Apart from the regular quiz nights in the pub, the next event planned is the Go-karting endurance at Oxford Stadium in September. Gather your teams as soon as you can to make this a great day out.

See next page for Ian's own account !

STOP PRESS – MORE CHARITY NEWS

I write this just as we scramble to get our Save The Children door-to-door collections in before Christian Aid week starts after the bank holiday. By the time you read this you will have been well and truly clobbered in the wallet. Speen and North Dean have been very generous this year with all the charity bits and pieces.

The Speen Supporters Group still awaits a final cheque for foreign coinage exchange but the total is in the region of about £500.00. The fortnightly quizzes, run in the main by Geoff and Clare Hayward Smith, have produced a small regular income and huge regular fun.

Suzi Rose

'RISBORO' OSTEOPATHS

and natural health centre

Tel: 01844 - 275055 for appointments

**Incorporating: ACUPUNCTURE and HOMEOPATHY
FREE assessment or advice**

Conditions we treat include...

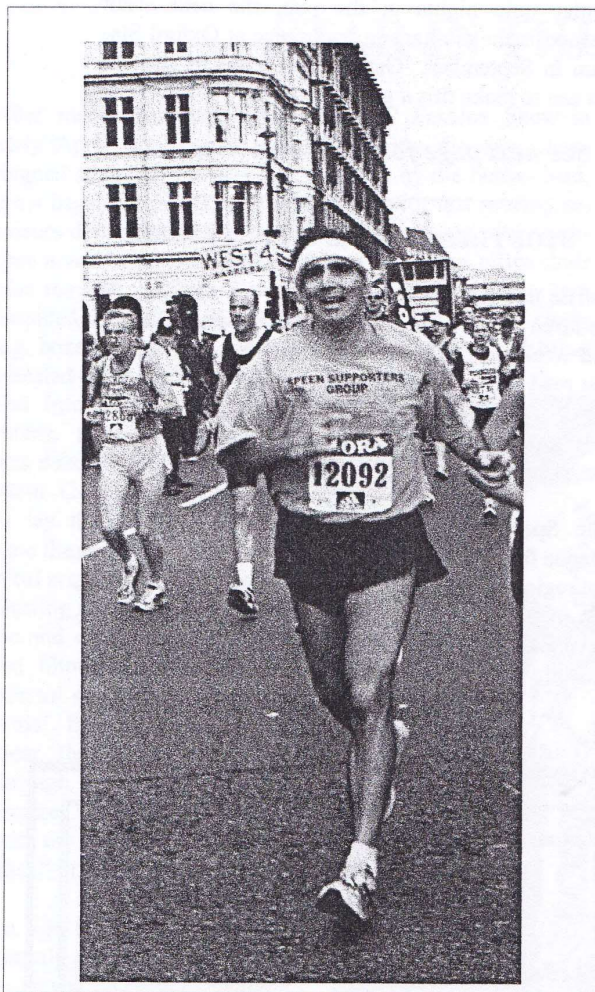
Back ache
Sciatica
Headaches
Tennis elbow
Painful knees
Jaw pain
Sinus problems
Menstrual disorders
Stress and nervous tension

Shoulder problems
Sports injuries
Stiff necks
Sore feet
Stiff joints
Trapped nerves
Irritable bowel
Arthritic pain

**Also available: Cranial Osteopathy for Babies, Children and Adults
Homeopathy for adults and children**

26 Wycombe Road, Princes Risborough, Bucks

London Marathon 2002



The benefits of living in Speen are the fantastic training opportunities offered by the undulating countryside – I am not alone in this view as I exchange a cheery grimace with one of the many runners struggling up the devils elbow to get back home! I guess I probably am alone in my London marathon winter training which with a busy job usually entails running at night around the lanes, so let me take this opportunity now to apologise to those drivers who have innocently come round a corner to be faced with a yellow luminous reflective blob on their side of the road which could have come from the set of Ghostbusters -The desire to run it over must have been almost overwhelming!

Training starts in earnest when the fateful acceptance envelope hits the mat in December, signalling the four month countdown to the start – To make it worse the London marathon website has a count-

down clock on it which is like a knell of doom if you are behind with your training.

The decision to run for the SSG was a happy and obvious one for me who like most people I know has friends or family who have benefitted from the services offered by the Hospice movement.

I cannot overemphasise the motivating effect of the sponsorship that so many Speen people pledged that got me out running in the pouring rain, and also helped overcome the pain and exhaustion that haunts you from mile 18 in docklands. Your muscles may be screaming and legs like lead, but just one look around at the myriad of good causes on fellow runners shirts makes you realise how lucky you really are, and what a fantastic event the marathon is to raise in excess of £25m for so many charities.

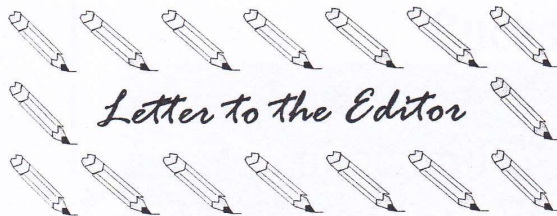
What is an inspiration to me is the spectrum of ages, shapes and sizes of the people who complete the course, and the sheer insanity of the runners who carry canoes or wear rhino outfits - My little pink number was verging on normal by comparison ! Perhaps in future there will be a Speen Marathon Team as stranger things have happened – whoever thought we would have a pub again !

My thanks go to all of you who generously sponsored me and the final total for the SSG came to a fantastic £2,215.90.

Ian Waterman

And now more exercise.....

Fancy an energetic cycle ride to raise money for Speen Supporters Group Hospice fund? Simon Jennings (488895 or ssjennings@btinternet.com) and Jeremy Symondson (488654 or jem-symo@aol.com) will be organising an on/off road mountain bike outing later in the summer, so please register your interest now - there will be ambitious financial and mileage targets!



Letter to the Editor

Speen W I Carol Singing

It was with regret that we decided that we could not hold this event last year - a tradition for over 20 years - but we intend to resume this year. We have always enjoyed the support and generosity of Speen residents, and would be delighted for anyone to join us - either in the singing or with a collection box.

We will of course give notice of the date and time later.

Joy Davies - President Speen W.I.



The Re-Upholstery Experts

Free Home Estimates

Fabrics by the Thousand

Fast and Efficient Service



Telephone: (01844) 278759

The Old Stores, The Green, Great Milton,
Oxford, OX44 7NT

Member: Association of Master Upholsterers



Antique Restoration And French Polishing

Complete Range of

Quality Restoration Work

Undertaken

Ian Gray

Work: 01494 488560

Home: 01494 488023

www.iangrayrestoration.co.uk



A Taste of France in West Wycombe

Our wine shop in the cobbled courtyard of
THE GEORGE & DRAGON at West Wycombe
has a selection of wines we have imported from small producers and
some of the lesser known and unheralded regions of France.

We have a wide selection of
gift packages of our very
particular wines to make
your gift shopping easy.
Prices range from £12.00

Shop opening hours:

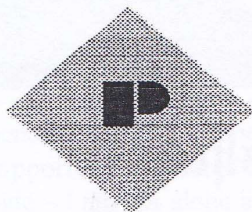
Friday 12-3 pm & 6-8 pm

Sat. 12-3 pm & 6-8 pm

We offer free delivery to readers of this
magazine!

For details: ring 01494 513131

Or fax 01494 462432



PARTRIDGE & CO.

Chartered Certified Accountants

The Gables, Market Square, Princes Risborough,
Buckinghamshire, HP27 0AN

Tel: 01844- 343900; Fax 01844-343903

E-mail: accounts@partridgeandco.i-way.co.uk

Are you fed up dealing with Inland Revenue Self-Assessment Returns?

Why not speak to Richard Partridge and let him provide a **Full Tax Return Service** for you. We have the market leading professional Tax Return software designed for all types of personal and company tax returns.

As Registered Auditors and Business Advisors, we specialise in providing a highly personal service to owner-managed companies, trades and personal tax clients, covering all aspects of business accounting and taxation.

NB: We have now moved to offices in the Market Square Princes Risborough.

Bucks Art Week

THE VISUAL IMAGES GROUP

Saturday 15th June until Sunday 30th June

This is the best, and the most comprehensive, art and craft show in Bucks.

I One hundred and forty five artists invite you to visit their studios, workshops and homes. You can watch them, talk to them, and perhaps buy all sorts of art and craft work produced by local artists.

The visits to the venues are free.

Free directories and leaflets will be available in Speen Stores. Keep an eye out as they get snapped up quickly. If you don't get one by 15th June contact me. The directories include the artists, illustrations of the artists' work and a brief description of how to find their studio or house and days and times when they will be open for you to visit them.

Our visits in previous years have often taken us to far flung parts of Bucks to find a particular artist. Exploring Bucks is a good idea in itself but you can be inspired by these artists working away all over the County doing some remarkable and original work.

Invariably they are happy to talk about their work and how it is done. We spent a fascinating afternoon watching a violin being made. We had no intention of buying one but the maker was full of enthusiasm and a delight to watch while working. We left with a far greater appreciation of the skill needed to make a violin.

Of course you can also use some really bright ideas from the members of The Visual Images Group involved. How to keep photos more accessible? Where to get materials? Where to get tuition for book binding etc?

Many of the artists have exhibited in London galleries or nationally and all exhibitors are of a high standard. Some small groups exhibit in venues that can be as outstanding as the art itself, for instance a beautiful

church which normally would be difficult to access. Many of the studios are worth looking at in themselves as they have wonderful views or interesting interiors.

Often you are offered a cup of coffee and a chat, not necessarily connected to the work on view. Everyone is anxious to make it a really splendid way to spend a morning or afternoon.

If you are still not convinced, come to a preview exhibition at Wycombe Swan between 21st May and 8th June. It is open between 10am to 6pm Monday to Saturday, and on Sunday and evenings only when the Swan is open for a performance.

Having checked last year's directory I see that there were 20 different arts and crafts being demonstrated during the two weeks of Bucks Art Week. Make this Jubilee Year the busiest ever for the Visual Images group and Bucks Art Weeks.

By Glenn Hart

Speen Fete

Art Exhibition

Speen Village Hall

Sat. 13th July 10am until 5pm

PRIVATE VIEW

FRI. 12TH JULY 5PM TO 7PM

ALL WELCOME,

An exhibition of Speen

artists and

photographers work

Speen Hair & Beauty

Hairstyling for all the family

- New French colour range
- Senior citizen discount
- Hair up for special occasions
 - Wedding packages
 - Gift vouchers

Also

Alternative therapies with ITEC qualified therapist

Reflexology
Indian Head Massage
Massage

Gift vouchers available

Friendly professional advice given anytime

Situated above Speen Stores, Speen

Telephone (01494) 488899

News from Speen Pre-School

Summer is (almost) here so watch out for small children on the move! The first sightings have been made this season of Speen Pre-School children walking along Studridge Lane in single file holding tightly to a rope - our own variation of the school "crocodile", as we take advantage of the drier days to use our outside play area on the Playing Field. Thank you Playing Field Association and others for helping us to get the area ready for the summer, and allowing us to move the wendy house to give us more space to play.

We had a very successful Easter Egg Hunt in March. The weather was kind and children of

team of staff.

An important theme this term has been that of road safety. The Village Hall was transformed into a mini village for two days, complete with library, shop and school. The children had a wonderful time driving their cars along the "roads" learning to stop at the zebra crossing and red traffic lights, and trying not to run over the lollipop lady and other pedestrians! We even had a visit from PC Pollkey who explained the importance of the Green Cross Code and stranger danger.

We then travelled back several million years to learn about dinosaurs and ammonites.

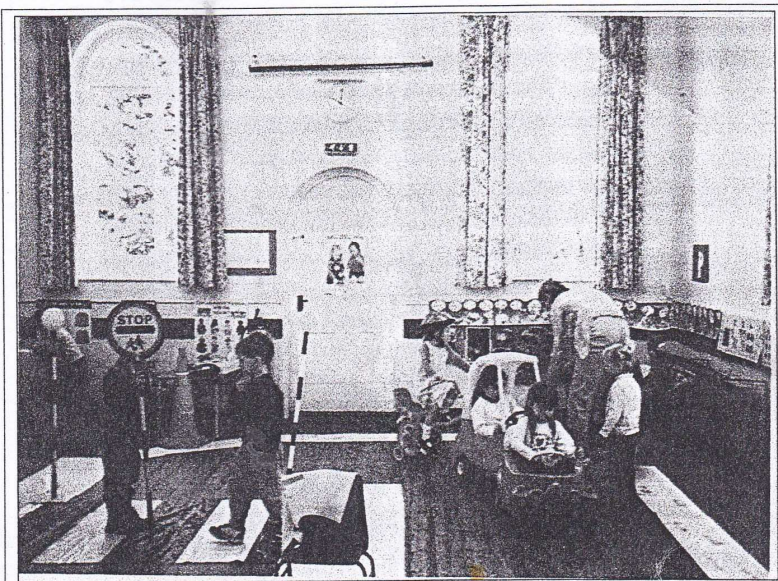
We are now looking forward to the summer with a holiday theme. We will be bringing the seaside to Speen by turning the outside play area into a beach complete with sand, water, picnic and hopefully some sunshine too!

This will be the last term at Pre-School for many of our children as 11 of them will be leaving us to start School in September. We wish them well and will miss them all. However, we are pleased that we will not lose touch entirely with them as most are going on to Speen School.

We still have places available for children wishing to join our provision. Please give

Yvonne Hanson a call on 01494 488160 or Kate Vale on 01494 488622 for further information or to arrange a time to pop in to see us in action.

Sandy Mitcheson on behalf of the Speen Pre-School Committee.

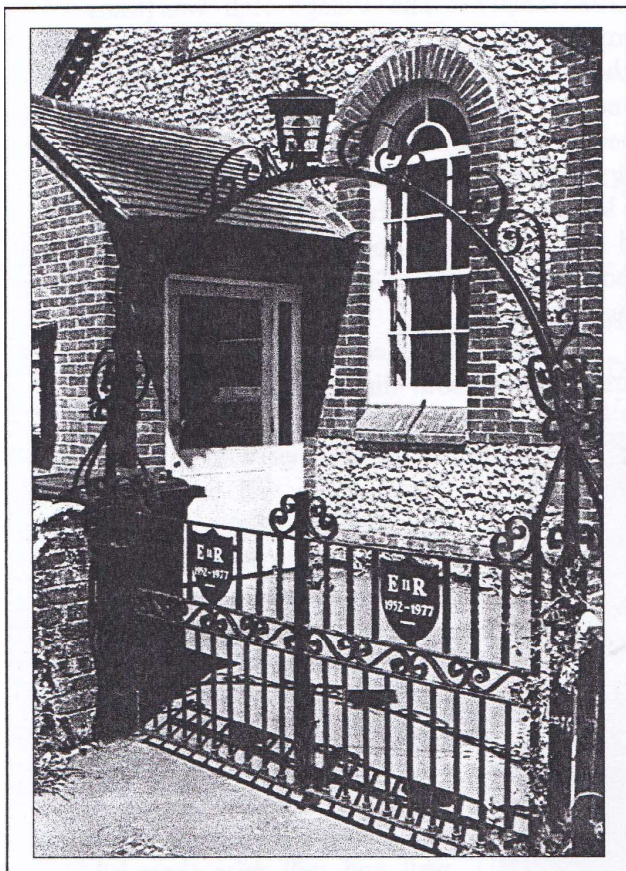


Road safety in the Village Hall

all ages had a great time looking for eggs around the village. Parents and friends were revived after their exertions, with tea and hot cross buns back at the Village Hall. Thank you to everyone who supported us.

We have had a busy term so far, starting with a new pre-school leader. We are delighted to welcome Yvonne Hanson (previously one of our deputy leaders) to her new role, and we are pleased that Janis Hearn is staying with the Pre-School as part of our valuable and committed

Speen Village Hall News



New Millennium Arch

Speen Village Hall now has a smart new wrought iron archway, mounted with a light to illuminate the entrance area, to complement its Silver Jubilee gates. The archway was paid for by the Speen Millennium Celebrations Fund and was made at Gomme's Forge in Loosley Row. David King kindly wired up the lighting.

It's murder in the Village Hall

The police were called to Speen Village Hall one Friday night in March when a middle aged man, believed to be a wealthy local aristocrat, collapsed and died after dining with his family. The man's solicitor was also present at the time. A Detective Inspector of police arrived at the scene shortly afterwards. The deceased was named as Lord Belgrove of Belgrove Hall, and the police quickly ascertained that the cause of death was poisoning. The inspector then made an astonishing series of deductions to unmask the murderer, whose name cannot be revealed here so as not to spoil it for anyone else.

The occasion was "Murder for a New Age", a Murder Mystery evening presented in the Village Hall by the Command Performers from Strike Command, Walters Ash. The action took place during a strictly non-poisonous three-course supper, prepared by Jean Baines and Marjorie Stockley and enjoyed by both audience and players. The task of the audience was to try to work out 'who dun it' but, although tongues and minds were liberally loosened by the licensed bar set up for the evening, only one table managed to identify the villain correctly. Catherine Butler organised a mystery raffle in which the prizes were heavily disguised so as to give no hint of what was contained in the packaging. The evening was run to raise funds for the Village Hall and to have some fun at the same time. Pleasingly, it seemed to achieve both objectives.

Martin Stockley

THE OLD PLOW BISTRO AND RESTAURANT AT SPEEN

SPECIAL PRIX FIXE SUMMER MENU

Salad of fresh mussels with Spanish chorizo

Or

Artichoke and fresh asparagus with shaved parmesan
and Balsamic dressing

Or

A cured prosciutto of loin of pork served with pickles,
onion samble and petit salad

Confit of duck with black pudding
and braised Alsace cabbage

Or

Pan-fried fresh Devon whiting a la Francais with
vine tomatoes, seed mustard and lemon butter sauce

Or

Hot goats' cheese, Stilton and leek tart
and tossed salad

£9.95 for 2 courses

**AVAILABLE IN THE BISTRO AND IN THE
GARDEN THROUGHOUT JUNE AND JULY**

Tuesday to Friday, lunch and dinner

This special menu can be requested when making a booking. Dishes on the menu are non-transferable. Our normal Bistro and restaurant menus are also available. Some of the dishes from these menus include -

PAELLA ANDALUZ - BOUILLABAISSSE MARSEILLAIS STYLE - FRESH DEVON
SCALLOPS - BLACK PUDDING WITH WILD BOAR SAUSAGE - GRILLED SOUTH
ATLANTIC GIANT PRAWNS - LOS ANGELES CAESAR SALAD - WILD SEABASS
AND TOULOUSE CASSOULET. (Dishes subject to availability).

The Old Plow Bistro and Restaurant, Flowers Bottom, Speen. For reservations telephone
01494 488300.

Chef patron and restaurateur Malcolm and Olivia Cowan

PLAYING FIELD MATTERS

VILLAGE SOCIAL CRICKET

The cricket section is again organising games during the summer. The intention is to continue with the informal, social games each month for all abilities, but there could be an occasional additional match with another village or pub if there is sufficient interest. The nets have been replaced so that coaching can now be provided for young people. Just turn up, or contact Chris Walsh (HW 488358). Social cricket (Sundays at 1.45 pm) is planned for:

16th June, 7th July, 4th August,
8th September.

Cricket nets are on Friday evenings at 6.30 pm.

WORKING PARTY

Another working party took place on 20th April. Some 30 villagers did a marvellous job cutting back hedges and grass, clearing out the 'Fete' shed, and clearing the children's areas. Three trailer loads of waste were taken to the tip.

The next working party will be in the autumn just before Bonfire Night.

CHILDREN'S PLAY AREA

The new rides are in regular use in this popular area. The Parish Council has generously provided funds to install a safety surface around the roundabout.

John Holmes

WE'VE MOVED!



B. A. HOGG (Motor Body Repairs) Ltd.

Unit 3
Fairview Industrial Estate
Kings Road
High Wycombe
Bucks HP11 1RY.

Oh Yez! Oh Yez! What Can We Do for You?

- ◇ Free estimates, at any location.
- ◇ Free collection and delivery service.
- ◇ Easy access and ample parking.
- ◇ Account facility available
- ◇ Fast & friendly service.
- ◇ Return to home service.
- ◇ Company & fleet service.

Interested?

Ring: 01494 512020 (3 lines)



**ZURICH
INSURANCE**

ESTABLISHED 1972

THE INSURANCE SERVICE

churchill



Wildlife Watch by Peter Symonds

In the natural world Spring is the key breeding season for most wildlife. Whilst foxes and badgers will have produced their young underground towards the end of the winter period, most animals and almost all our birds await the warmer weather of spring before breeding. One notable exception is the Muntjac Deer that produce offspring throughout the year on a seven month cycle.

Frogs return to various local ponds in vast numbers during February and spawning start around the end of the month and through into March. The earliest spawning occurs in the warmest ponds which are sheltered yet receive plenty of sunlight. For example the pond in the woods at Great Hampden contained vast quantities of spawn by the end of February whereas spawning did not start in my own pond until March 4th. I estimate that some 120 - 150 adults return each year with the females outnumbered by the smaller males. Many of the males "ambush" the females in College Plantation and "hitch" a ride back to the breeding ground, fending off rivals on the way.

About two weeks later toads return to their breeding ponds. Their distribution in the locality seems to be more restricted than in the past, seemingly absent from certain suitable looking ponds. Another pond in our garden supports some 80 adult toads who soon produce long strings of spawn. By the end of March the frog's tadpoles have hatched in vast numbers providing a feast for our local newts, which include both smooth and pale varieties.

By the end of March some of our migrant birds have returned. A Chiffchaff was heard in College Plantation the 24th of March with three singing the following day. Blackcaps seem to be about in good numbers, swallows are now about and will no doubt soon be perched on the telephone wires outside Speen Stores close to one of their regular breeding sites. During the spring period breeding garden birds always seem to suffer enormous losses as they attempt to incubate eggs and rear young. While hole nesting birds like Tits, Nuthatches, Starlings and Woodpeckers fair reasonably well, birds with open nests suffer from predation by Magpies, Grey Squirrels, Edible Dormice and other opportunists. Within our own garden three Greenfinches nests have been attacked by Magpies and

some Song Thrushes have lost their eggs. Blue Tits and Wrens are feeding young at present whilst elsewhere in Abbotswood Pied Wagtails are believed to be using last years successful nest site.

Young birds that are successfully fledged soon become vulnerable to attack from other predators including local Sparrow Hawks. These have been sighted regularly over both Speen and North Dean. Numerous other species are active at present collecting food for their young. A heron was noted in North Dean preparing to raid a garden pond.

No particularly rare sightings have been mentioned to me during the past couple of months, but one morning walk towards Byants Bottom produced a buzzard followed by a simultaneous view of four Red Kites. This is indicative of the spread of both of these species which is probably supported by an apparent increase in the local rabbit population.

Please let me know of any interesting records or sightings

Peter Symonds Tel. 488016



Is your water as hard as nails?

60% of British households suffer from these sure signs of hard water problems:

- Blocked shower heads
- Slow running taps
- Scum marks in baths and basins
- Excessive use of household cleaners
- Harsh, hard towels and clothes
- Increased water heating bills
- Scaled-up kettles and appliances

Contact:
MARION BENNET



Sterling Softeners
WATER TREATMENT SPECIALISTS



Sterling Softeners,
Courms View House, North Dean,
High Wycombe, Bucks., HP14 4NN
Telephone/Fax (01494) 565232

SPEEN HORTICULTURAL SOCIETY

Our talk at the Village Hall in March, organised by Ros Darnton attracted about forty people. It was by Steve Relton, illustrated with slides and entitled Twelve Months At Waterperry, where Steve is Assistant Manager.

Our next talk again at the hall, is on Friday 4th October, organised by Betty Eckle. The subject this time is "Wild Flowers in Buckinghamshire" and it will be given by Alan Showler. Posters and flyers will be printed nearer the time.

The Horticultural Society has no plans for an open gardens day this year, but maybe next year.

We're having our usual stand at the Fete this year and so we'd like Speen gardeners to join in with their flower arrangements and pot plants, for exhibition, plus flowers, plants and produce, etc for sale.

This year there'll be a Garden On A Large Plate (or small tray) competition for children. A sort of Ground Force in miniature for equally miniature garden designers. Please include a note of your name and age. If you are an adult and would still like to do a miniature garden (in your case, not for competition) then why not go for it anyway (the committee will kill me for that)

SR Farm Contract Services

HEDGE CUTTING—FENCING
GROUND EXCAVATION WORK
PADDOCKS AND LAWNS MOWN
GENERAL GARDEN MAINTENANCE
LOGS SUPPLIED

Tel. Steve Rogers—01494 562041

Beau Vista, North Dean, High Wycombe HP14 4NH

SURGICAL CHIROPODIST

HOME VISITS BY APPOINTMENT

Telephone
NAPHILL (01494) 562569

Mrs Rosemary Stone MSSch MBChA

RICHARD FERGUSON

BUILDERS

All building work
undertaken



- ◆ Extensions
- ◆ Renovations
- ◆ Fireplaces
- ◆ Fitted Kitchens
- ◆ Bathrooms
- ◆ Patio's
- ◆ Decorating
- ◆ Electrical work

16 Moseley Road
Naphill
High Wycombe
Bucks., HP14 4SQ.



01494 562954

As usual, all items for display and sale should be brought along to the main marquee, preferably before noon on Fete day. One or two of us will be there to receive them. If anyone would like something to be collected, please let me know.

Incidentally, if any keen gardeners in the village might like to join us on the Horticultural Society committee, they would be very welcome. Just give me a ring if you may be interested.

By the way, for anyone who is a member of the Society, we have a large collection of past issues of The Garden (The RHS monthly publication). Let me know if you might wish to borrow some of them.

On a personal note, during the past few years I've been gradually changing the whole of my garden into a walk on the wild side - to put it kindly. But with all the sunshine and showers we've been having this year maybe I should now call it 'temperate rainforest.' Mary threatens to wield a machete if the ever-increasing collection of bamboo, ferns and grasses gets any wilder...!

PS: Will anyone in possession of Society trophies please return them to me at Chervil Meadow, Chapel Hill

Peter Dawson (secretary) 488222

Repeat Performance, or the day we went to see the Queen

On 7 May 1977 ours was one of over 500 Rolls-Royce and Bentley cars made before 1940 that drove in procession through the Sovereign's entrance of Windsor castle and past H.M. The Queen in celebration of her Silver Jubilee.

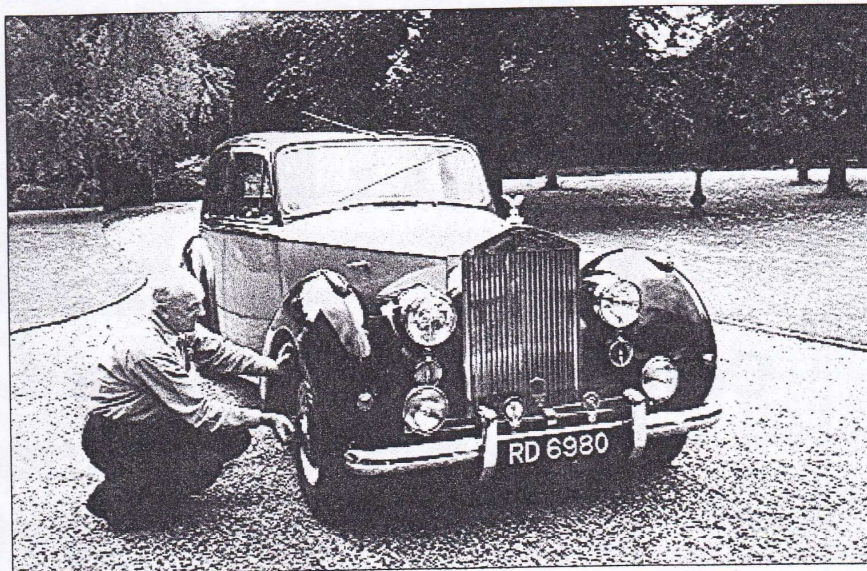
What we did not know at the time was that Stan Bale, now living in Wayside, was a television cameraman on duty that day. To celebrate the Golden Jubilee, we were again invited to parade in front of Her Majesty. This time there were 200 Rolls-Royce and Bentleys covering all years up to the present day. Another 500 cars also came along to drive through the Castle after the Royal Party had left.

An early start was necessary to arrive at the Home Park by 9am. All the cars had to reverse into the tarmac area which was marked off to the size of modern cars. The length of a Rolls meant that each car had to back into the railings at the side. When we parked there was a loud "crunch" - the wood rail at the back having been demolished! Of course there was not a mark on the car. We then had a wait in anticipation for nearly two hours while police and marshals sorted out the traffic and closed the roads through the town.

The 200 cars were sorted and parked in order, each car bearing a numbered plaque. Very slowly and quietly, at about 11am, the cars started to leave the Park into Datchet Road. As we drove into the town more and more people lined the pavements. We now know how it feels to be royalty. At the Castle entrance we had to show our Passports for security - then through the arch into the Sovereign's courtyard. We noticed a sudden quietness, as no member of the public is admitted. The courtyard is quite large with a Portico at the doorway to the actual entrance to the Queen's private quarters. We

drove through the portico and then slowly - very slowly, to savour every moment of a "once in a lifetime opportunity" - we passed the Queen, Prince Philip and the Constable of the Castle.

Her Majesty was wearing a pale mauve coat and



Don à son mobile

matching hat. The cars passed through one at a time and everyone had a wave from the Royal Party. A sharp turn left through the Archway into the Long Walk and into a battery of perhaps 50 or more cameramen and film crews, then a short drive down where we were parked in the field at the side of Frogmore House. As well as our cars, there were the Queen's 1954 Rolls Phantom IV and the 1965 State Landaulette with Perspex roof. The Queen of the Netherlands sent her State Silver Wraith along and also on show were the oldest Rolls-Royce in existence (1905) and the original Silver Ghost (1908).

In the afternoon the public were admitted on payment of £5 to the Prince Philip Trust. Other than a brief shower of a few minutes the day was fine, though overcast. By 4pm it was time for home. The car went like a dream; a day never to be forgotten. By the way, just for the record, our car is a 1954 Silver Dawn.

Don White

BEECHDEAN

Farmhouse Dairy Ice Cream



**Come to the farm and view
our range of delicious
farmhouse products
You will be amazed
at the selection.**

**available from
Beechdean Dairies,
Old House Farm, North Dean.
Open normal office hours
Monday to Friday**

**Tel : 01494 563980
www.beechdean.co.uk**

Your village – your voice

Over 60 local people from Lacey Green and Speen attended a meeting in the Millenium Village Hall at the end of March to launch a Community Plan for the Parish of Lacey Green. 20 local groups and organisations were represented at the event, which sought to capture an initial response from the local community on the key issues in the parish.

A wide variety of views were expressed during the evening. Many positive comments about the quality of life in Speen and Lacey Green were highlighted including the strong community spirit and local heritage. Many challenges/ issues were also raised and some of which are summarised below:

- “We want our Shop and Post Office back in Lacey Green”
- Lack of affordable housing for local people
- Preserve the special heritage across the parish
- Resolve issues regarding pre-school and primary school provision
- Better facilities for teenagers
- Reduce speeding traffic through villages
- Address parking problems particularly near shops & schools
- Provide safe walking routes

During the summer a steering group will be set up to help seek the widest possible input into this process so that all residents and particularly the young and elderly, can contribute their views to this initial response. Local action groups will be established to seek solutions to the major challenges in partnership with Wycombe District Council and Buckinghamshire County Council.

Since the initial meeting work has already been going on to deal with some of the issues raised, in particular:

- **School admissions** – Good progress has been made to resolve the potential problem with the 2003 and onwards intake from Speen. The situation, following negotiations involving the governors of both schools, the local elected member, the LEA and the Diocese, is that it has been agreed for September 2003, that up to 19 pupils can be admitted to St John's at 7+ transfer. This will mean that any in-area child or sibling wishing to have a place can be accommodated. I anticipate the two schools will plan together in this way in future years which will ensure that there is a good deal of certainty for parents regarding the continuity of education for their children in the area.
- **Speed limits** - The subject of speed limits is shortly to be tackled County wide. As part of this process consultation will be required at a local level. The case for revised limits and or extended coverage will therefore be a high priority for those on the steering group.
- **Quiet lanes** – Support for this project has given by Wycombe District Council, which, if accepted by the County Council, could mean that the Lacey Green Parish is included into the extended project area.
- **Post Office at Lacey Green** - A meeting between WDC & The Post Office Rural Adviser took place on 25th April to discuss this issue along with others within the Wycombe District. Various proposals were put forward and these will be put to the Parish after the initial working group meeting.

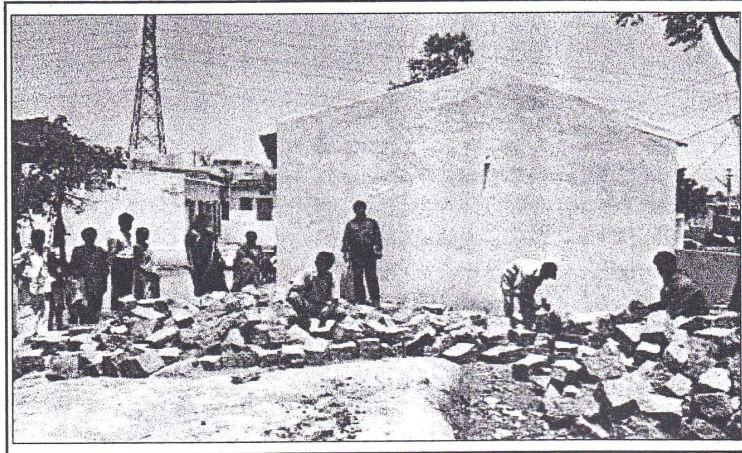
Feedback on the progress of all initiatives will be forwarded to Cllr Tony Molesworth / Cllr P Rogerson. The issues raised will also be circulated as part of the ‘Community Planning at the Local Level’ project at the launch event of the Wycombe District Local Strategic Partnership to be held on Monday 15th April 2002.

In the meantime if you would like more information or would like to get involved in the Community Plan for Lacey Green Parish contact:

Cllr. Paul Rogerson : 01494 488315

Cllr.Tony Molesworth : 01844 344975

Agape School, Hyderabad, India



Late last year Andy Gower invited me to join him on a trip to Hyderabad in India. By the time we got on the plane in February I found I was doing more than just carrying the bags. The primary purpose of the trip was to teach at a bible college run by a Christian organisation that Andy has worked with for a number of years called Sion Fellowship. We were also there to help out with the day to day activities of the fellowship (for example Andy was up addressing a congregation within two hours of us clearing customs!), to learn from the fellowship, and last but not least to help with the planning of a school.

The objectives of the school are to "Uplift the poor and Dalit (untouchable) children in this rural area. To provide education for needy and deserving children". The total number of pupils is expected to be up to 160. All will come from backgrounds of extreme poverty – I mean by that conditions where the family income will be measurable in pence rather than pounds per day and five year olds go out to work.

Most education in India is fee paying. By definition it therefore excludes these children. Their only hope to break out of the cycle of poverty is to attain a level of literacy, and that can only come through voluntary programmes.

Before we went over Speen Chapel had already initiated a campaign to raise funds towards the school building programme. Many people from the local community in Speen and North Dean gave generously and we were able to tell Chandra and Sekhar, the couple who are running the project over there, that sufficient funds were available to build three classrooms and provide some basic equipment. I cannot describe the grati-

tude, joy and enthusiasm they showed at the news. A HUGE THANK YOU to all who contributed. Building is now well under way (some early pictures are on display in the hallway at the Chapel) and the school should open for the new school year in June 2002.

Having seen for myself the situation out there I am determined that support for the school should not stop there. This view is shared by the Chapel, whose members have agreed to support fund raising activity for the running costs of the school with the aim of covering all basic teaching costs for at least the next two years. Let me put this in context:

To pay a teacher for a month costs around £23.

To pay a classroom helper costs around £16 per month.

I am confident that the teaching costs which total around £2,500 per year can be met one way or another but in an ideal world I would like to see some surplus to provide the children with basic food. To provide a mid-day meal of good quality for a child costs under 15p. The children will be giving up the chance to earn a few pence a day in order to go to school. I think they will go to school anyway, but the risk is that their income loss is a direct loss of food to the family. Hence a meal at school may be of great importance.

I hope to be able to go out again in February next year. In the meantime I seem to be *de facto* treasurer to the school and I very much want to see it thrive. If you feel that you want to know more or want to contribute please speak to me (01494 488875) or Andy. Contributions for the school can also be made through Speen Chapel.

James Entwisle



MADE IN ENGLAND

Speen Choir and guest soloists entertained two full houses in the Village Hall in April, when the programme featured music exclusively by English composers. The Choir presented its usual wide variety of musical styles, ranging from William Byrd's beautiful Ave Verum, through a couple of foot-tapping early 17th Century madrigals, via Edward Elgar, Benjamin Britten and finally to Lennon and McCartney - when mop-top hairstyles suddenly sprouted from nowhere.

There were some fine individual performances, too. Greg Symondson and Natalie Awdry represented the young people of the village with renditions of the Beatles' "Yesterday," and "I

Sit in the Sun" from Salad Days, while Choir members Margaret Lewis, Megan Chinn, Phil Howell, Chris Cornford, Wynne Davies and Roger Craft all contributed further songs. Phil Howell's "The Foggy, Foggy Dew" was a particular hit.

Emma Cleaver impressed with a piece from the film "Titanic" confidently played on the flute, for which she had herself composed a piano accompaniment, and Peter Salmon and Gwen Palmer provided further instrumental enjoyment with Elgar's Chanson de Matin for violin and piano.

Jean Baines and her helpers supplied an excellent 3 course supper, and with a licensed bar the audience on both nights was assured of a convivial evening.

Martin Stockley



COLES & BLACKWELL

ACCIDENT REPAIR & SERVICING SPECIALISTS

Walters Ash, High Wycombe, Bucks HP14 4UX

Opposite the Bradenham Hill Top Junction

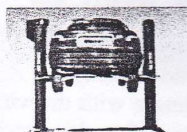


Mechanical

Bodywork

Monday to Friday
8.00 - 5.30

Saturday 8.30 - 12.30



FREE ESTIMATES
01494 563102

Established 1959

***Our reputation
is your
guarantee***



- ❖ All makes of cars serviced
Please phone for details
- ❖ Breakdown & Mechanical repairs
- ❖ Crypton tuning and diagnostics
- ❖ Tyres all makes, low prices
- ❖ MOT Testing & free re-test
- ❖ Brakes & Clutches
- ❖ Exhausts & Batteries

- ❖ Insurance & private accident repairs - free 'R' Reg loan cars
- ❖ Approved by all leading insurance companies
- ❖ Chassis repairs on alignment jig
- ❖ Windscreens
- ❖ High gloss paintwork in our low bake oven
- ❖ Welding

Speen WI News Report

Alan Copeland came to Speen WI in February with an illustrated talk on the curiosities to be found in the Chilterns - and no he didn't mean the members of the WI ! He explained with the aid of beautiful slides some of the bizarre things to be seen if you only look carefully around the area. Some we had actually seen before, but many were very subtle and hidden away - usually on high. So if you see ladies walking around looking skywards, fear not - we are just checking out the curiosities around us.

In March, Kay Bradford invited us to make the most of our memories. As well as a light hearted quiz to test our current memory she gave many useful tips on how to maintain and hopefully improve our memory in the future - all done with great humour and charm.

Some members also went to the Spring Group Meeting at Great Hampden Village Hall where an enthralling insight into the life of Her Majesty's Messengers was given by Col. John Kimmins.

As usual, in April Speen entertained members of other WIs as well as Muriel Rutherford and Pat Trunkfield, our County Advisers, to a Birthday Supper prepared by members. With entertainment from the Bakehouse Buskers and a glass of wine or two, a good time was had by all.

And so to a more serious frame of mind in May when the Resolutions to be put forward at the National Intermediate General Meeting were discussed. Joy Davies and Jean Morris had attended the excellent meeting held by the Bucks Federation at which representatives of the NFU and the Meat Marketing Commission had helped to explain all aspects of meat production and slaughter, and the trade in poor quality and illegal food imports. With all this information now at hand members were able to hold an informed argument about the two resolutions under discussion. These are asking for a tightening of the checks for food at ports and airports and for the Government to give more support for smaller lo-

cal abattoirs. The latter is of course influenced by the supermarkets, through whom so much meat is now retailed. Maybe we all have a part to play in this by being more concerned about the sources of our own weekly shopping.

With many more excellent and thought provoking speakers to listen to in the next few months (see What's On Page) we can look forward to an interesting time. On June 26th we are holding a Cream Tea Afternoon, hopefully - weather willing - in a garden setting at Hampden Gate and hope many friends from the village will join us that day. An invitation is also extended to Bridge players to watch for the details of the Bridge Drive planned for September.

Jean Morris

Hughenden Builders

Established 22 years

All Building Works Undertaken

- ◆ Extensions.
- ◆ Alterations.
- ◆ Loft Conversions.
- ◆ Roofing - all types.
- ◆ Drives, Block paving, Tarmac etc.
- ◆ Patios, Walls, Garden landscaping.
- ◆ Plumbing, Plastering, Carpentry.

Planning Service.

Clear & Concise Plans

Single Story £150.00

Two Storey £300.00

(plus council fees)

Free detailed estimate with drawing.

Planning fees returned if tender accepted.

**171 Main Road
Naphill**

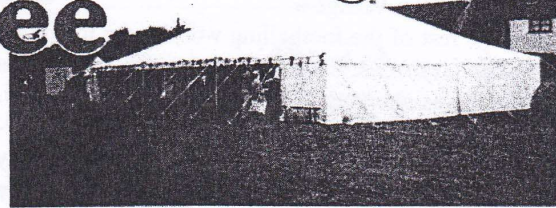
**Tel: 01494 56293
01494 43805**



Marquee Hire



SPEEN MILLENNIUM MARQUEE



Wedding Parties Fetes Discos Open Air Dances Barbeques

The village of Speen has bought a large marquee, primarily for use by village organisations, which is available for general hire. Any income raised will be used to support village events and charities. The Speen Millennium Marquee is an attractive, modern, traditional marquee made of the latest fire retardant fabric. The fabric is white and therefore light and airy inside. A lining is usually not necessary. The walls are removable to suit all weather conditions. Internal background lighting is available. Tables, chairs and other fittings appropriate to an event are not supplied with the Marquee.

Specifications:

The Marquee is 60 feet long by 40 feet wide, with an eaves height of 8 feet. The Marquee can be reduced in size to 40 feet by 40 feet.

Contact Information:

For further information, pricing and availability contact John Holmes:

Telephone: 01494 488420 Email: jholmes@nildram.co.uk

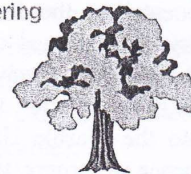
NORTH DEAN VILLAGE HALL FOR HIRE!

Are you looking for a quiet country location close to High Wycombe to hold your:

- ✓ Wedding Reception?
- ✓ Children's Party?
- ✓ Family Celebration?
- ✓ Meeting?

NORTH DEAN VILLAGE HALL may be just the venue!

- ☺ Recently refurbished, it offers the ideal setting for the smaller gathering
- ☺ Licensed for 80 people
- ☺ Ample car parking
- ☺ Playing Field surrounded by beautiful countryside
- ☺ Children's playground
- ☺ Competitive rates



For more information contact: MEGAN CHINN 01494 563074

Speen victory in Charity Football Match

The Harrow 1 Speen Village 6

Whilst the rest of the footballing world were focussing their attention on the FA Cup on Saturday 4th May, grass roots football was showing through at Hughenden Valley. The Brittle Bone Society was the beneficiary as The Harrow public house pitted its finest against Speen's Sunday afternoon kick-about squad. The men and boys from Speen gather on the playing fields every Sunday afternoon, arrange themselves into two roughly equal teams (numbers per side are unimportant) and play a game roughly equivalent to football - although the FA might have a few things to say about the pitch dimensions.

Hughenden Valley Football Club had made their facilities available for this charitable challenge. Within 15 minutes from kick-off Speen had surprised their supporters by scoring the opening goal through the efforts of teenager Richard Gower. The team was still smiling and congratulating themselves when The Harrow kicked off from the centre spot and Nick Wilkes equalised less than 45 seconds later. It was obviously time for a bit more concentration. Speen's tall Norwegian, Arvid Halvorsen, crossed the ball into the penalty area and, in the scramble that followed, the ref's whistle sounded; he

pointed to the spot. Dan Palmer stepped forward to take the kick for Speen and successfully navigated it into the Harrow's net. Unfortunately there were still other Speen players in the area at the time, so the ref made him take it again. Practice makes perfect and again the ball ended up in the back of the net. Richard Gower added a third goal and Anthony Philips headed a fourth home before the break. Dan Palmer put Speen even further ahead in the second half and Richard Gower made his hat trick. The final score was 6-1 to Speen, a triumph of youthful fitness over greater experience. The other success story was the £150 collected for the Brittle Bone Society.

John Radford



THE QUEEN'S GOLDEN JUBILEE PROM CONCERT

Yes, I was one of the 12,000 fortunate ones drawn out of a hat to attend the Prom Concert in Her Majesty's Garden at Buckingham Palace. My husband would have been away sailing, so I had asked a friend of 40 plus years if she would like to go, then applied Online in both our names. It was Jenny's name that was picked out and she could take one guest. Her husband or me? I'm delighted to say our friendship won.

Saturday morning eventually arrived, complete with sunshine and music from Piggotts on the hill above us. We set off around lunchtime, arriving at the Palace for a brief queue prior to entering the Forecourt around 3.30pm. Through Security, we collected our picnic hampers in the Quadrangle and then, on red velvet-like carpet, through to the magnificence of the interior: the Grand Entrance to the Grand Hall, into the Marble Hall and on into the Bow Room, from whence we progressed out onto the West Terrace and down the steps for time to savour the Gardens and the view back to the Palace – often a Garden Party setting.


There was a host of entertainment by way of street theatre, jugglers, acrobats, stiltwalkers, etc., to amuse the guests whilst they were walking around and seating themselves on the lawns, using the ponchos provided in the pic-

nic coolboxes as groundsheets, enjoying the warm sunshine. We chose to walk the path between the shrubs down to the Lake for our picnic. I am sure everyone will have read of the extravagance of the picnic. Not bad! Some will have heard via the numerous mobile 'phones "calling you from Buckingham Palace".

Time to find our allocated seats. Blessed again, with central seats not very far back, we had an excellent view of the Stage. The music of the Concert was enthralling, ranging in diversity from Popular Classical to Opera and Ball. Sir Andrew Davis never ceases to amaze me with his enthusiasm and energy, but the 12-year old Clarinetist, Julia Bliss, has to take the title of Star Performer. I wonder where his proud parents were? Rostropovich, the opposite end of the scale in age, made his Cello sing Brazilian music. Even the Royal Fireworks filled the night skies in tribute to Handel. Can you imagine what 12,000 ardent Royalists made of Elgar's Pomp and Circumstance March followed by The National Anthem, sung in those splendid gardens all facing Her Majesty? My heart swells just recalling the atmosphere. I really hope many of you were able to see the recording on television.


10.15pm. The Concert has ended. We all filed a quietly, sated with pride and pleasure, down a path subtly lit, past Mews dwellings and shrubs. A night to remember forever.

Celia Dibden



**THE GARAGE THAT
COMES TO YOU**

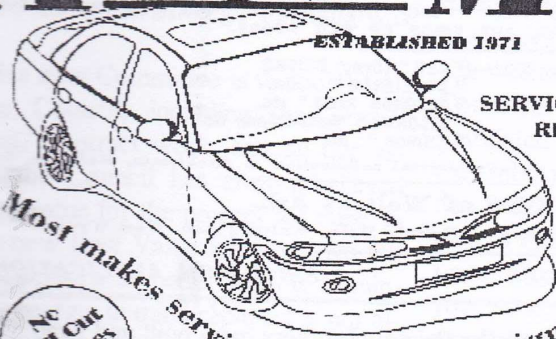
All areas within 35 miles of High Wycombe



VEHICLE TECHNICIANS

AUTOS - MOBILE

ESTABLISHED 1971





**SERVICING
REPAIRS**


**BRAKES
CLUTCHES
FUEL INJECTION
ELECTRONIC IGNITION**

**No
Call Out
Charges**

Call
Bob Wheeler

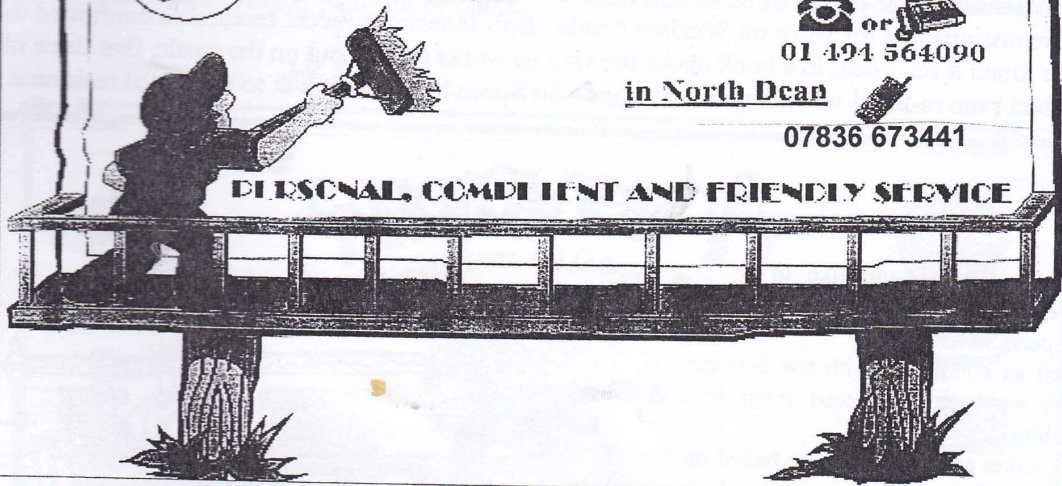
 or 

01 494 564090

in North Dean 

07836 673441

PERSONAL, COMPETENT AND FRIENDLY SERVICE



I am now based in NORTH DEAN and am probably one of the best equipped MOBILE services in existence. 30 years service to the surrounding area has given me a wealth of knowledge and keeps me abreast of all technological advances. I have up to date diagnostic and tuning equipment to cope with almost all cars and light commercial vehicles. Another benefit is, I COME to YOU, so you don't need to leave home for your servicing or repairs. No other garage is closer to you. If you wish, your car can be serviced or repaired at another Location, e.g.. - at work (if your employer is agreeable).

I offer a Personal, Friendly and Competent service to the highest standards.

Why not call today and book your next service?

T. BRISTOW & BROS.,

Brick & Stone Merchants & Contractors,

CONTRACTORS TO HIS MAJESTY'S COMMISSIONERS OF WORKS, &c.

Offices and
Postal Address: Speen, Princes Risborough, Bucks.

Own works in the noted Denner Hill, Wycombe or Heath Stone.

Used for all sizes of Edge Kerbings, Setts or Pitching Stones for all purposes, Flat Channelling, Building Stone as used at Windsor Castle, Rockeries, Ferneries, &c., Broken Stone for Concrete, etc.

ESTIMATES GIVEN TO DELIVER, OR DELIVER AND LAY COMPLETE, OR FOR REDRESSING AND RELAYING, ANY KINDS OF OLD STONE.

We make at our Kilns—“ASH” (Grey) BRICKS
“BEST REDS” do.
“SECONDS REDS” do.
“SECONDS” Multi-colour do.
“THIRDS” do.

We turn out a thoroughly good Brick, giving universal satisfaction to Architects, Builders, &c.

Stone Quarries and Brick Kilns at Walter's Ash.

Telegrams: “Bristow Bros., Walter's Ash, West Wycombe.

ORDERS PROMPTLY ATTENDED TO.

PRICES ON APPLICATION.

The 1911 advertisement above was placed by the Bristow brothers, who built and lived in the semi-detached houses on the corner of Studridge Lane and Chapel Hill in Speen. In it you will see that one of their commissions was for work on Windsor Castle. Bob Johnston's recent researches confirmed this when he found it recorded, in a book about the various works carried out on the castle, that three of the towers had been re-faced with Denner Hill stone. So Speen has a direct link to the Royal residence.

Speen Stores

Sandra & Peter would like to thank everyone for their support since taking over Speen Stores.

As well as continuing with the delicatessen counter we have introduced fresh fruit & vegetables.

Bread, cakes and croissants are baked on the premises 7 days a week.

We are also able to provide a buffet range for that Special occasion

Please ask for details

Shop Opening Times

Mon - Fri 6.45 am - 7 pm

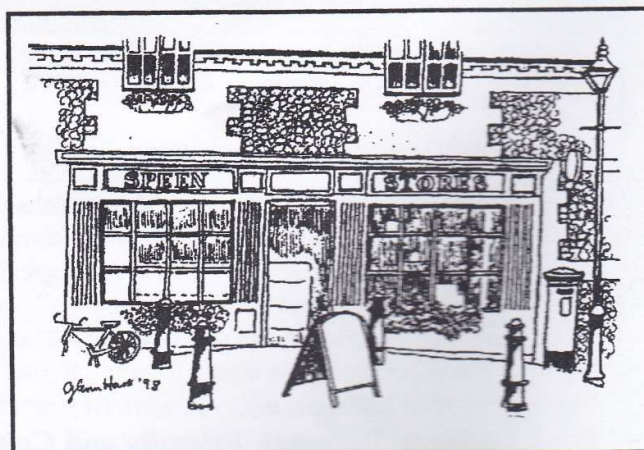
Sat - 8 am - 5 pm

Sun - 9 am - 1 pm

Post Office opening times

Tues & Thurs 9 am - 5.30 pm

Sat 9 am - 2 pm.



We look forward to seeing you

Hughenden Parish Council

Hughenden parish Council held its A.G.M on Tuesday 7th May.

After serving four years as Chairman I decided not to seek re-election. Cllr Rick Gould from Great Kingshill was elected to the Chair, and Cllr Chris Morley from Hughenden Valley became vice Chairman.

Councillors for the existing standing Committees were elected, the Committees being Finance and Administration, Services, and Planning; a new Committee to be known as Strategic Planning was formed.

The brief for this new Committee is to look at all aspects of the Council, including the Annual Budget, Staffing, Contract work, and all our assets. Although the Council has always believed that we are good value for the precept we raise, in the light of the new Best Value initiative, we felt that there could perhaps be better ways to administer the budget, bearing in mind cheapest is not always best. When this restructuring is complete and changes made, a forward rolling plan will be put in

place, with budget figures and time scale, so that the electorate will be able to see not only where its money has been spent, but also where we intend to spend it in the future

The Annual Parish Meeting was held on 14th May at Widmer End, but was poorly attended by the general public. After the Annual reports had been given Cllr Cherry Aston, the newly elected Chairman of the County Council, took the floor and answered a number of questions, particularly on traffic calming in the County. There is a scheme to address speeding through our villages, but with the usual budget constraints this will take some time to achieve

Cllr Richard Pushman, who is not only a Parish Councillor but also a County Councillor, was congratulated on being elected as Vice Chairman of the County. This is a unique situation, as Hughenden Parish has both the Chairman and Vice Chairman as their County representatives.

I am still your ward member for North Dean, so if you have any problems or questions I can be reached on 01494 562041.

Cllr John Rogers









TREATS II

A Tradition of Good Toys!



TREATS II

5-7 Duke Street
Princes Risborough
Bucks. HP27 0AT.
Tel: 01 844 344354 Fax: 01 844 274540









TREATS II, the greatest selection of toys in the area!
Scientific & Educational

STOP PRESS!

Rob Lenko has already written the next show for Speen Festival 2003 - "The Pied Piper of Speen"

Read through in the Village Hall on Wednesday September 11th at 7.30pm

All those interested in participating in any way please come along on the night or ring Marje Stockley on 488101

D.J.Coles

Property Maintenance and Improvement

- * Painting & Decorating
- * Fitted Kitchens & Bedrooms
- * Carpentry
- * Loft Insulations & Boarding
- * Fence & Shed Erections
- * Gutter Clearing & Replacement
- * Garden Maintenance



No Job Too Small



Tel: 01494 816282

Mob: 07747783015

Mark Wengler Project Management



Telephone: 01 494 488025

Mark Wengler Project Management

Design Service
Extensions & New Build
Specialist Refurbishment

Wayside Cottage
Hampden Road
Speen
Princes Risborough
Bucks. HP27 0RU.

Wycombe District Council News

May 2002

It was good to see the interest generated by Wycombe District Council's **Community Planning** initiative. It was certainly an impressive turn out at the launch meeting with over sixty local people attending representing at least twenty local groups. I hope that the momentum of this initial interest is maintained through the Steering Group that is shortly to be formed. If anyone is interested in being part of the Group please let me know. I do appreciate that what is needed from this initiative is tangible results delivered on the ground so I am pleased that good progress is being made on several fronts. (see Your village-your voice).

I have continued to press for funding to be given to Rural areas. Progress has been made to bring the '**Quiet Lanes**' project into the north of the District. I have had preliminary talks with the County Council to identify the project area which, if approved, will include the Lacey Green Parish. If successful the significant benefits will come to the Parish especially for those walkers and equestrians using the lanes identified as 'quiet lanes'. I am also pressing for District funds for capital works to be made available for projects that have fallen short of transport funding from the County Council on safety grounds but qualify for further consideration through their potential to enhance the quality of life in rural communities.

I am pleased to say that pressure on the County Council to review **speed limits** throughout the county has brought results. There is to be a countywide review of speed limits so if you have thoughts on where adjustments should be made please let me know and I will pass them on.

I have been asked when the realignment of the kerbs to give a safer place to cross the road at the Chapel Hill / Hampden Road junction will take place. The BCC Area Office has advised me that this work is scheduled for June and should also include the repairs to Studridge Lane.

The **Central Railways** issue remains unresolved. The latest situation is that the scheme as proposed by Central Railways has not gained government support through shortcomings in the

details provided by them. The government has asked Central Railways to do further work, supported by the Strategic Rail Authority, to show that the scheme is viable and supportable. It is therefore unlikely that any decision will be forthcoming for at least six months. This delay, whilst unwelcome to those threatened by the proposal, does give more time for those who wish to express a view to do so. If you feel, as I do, that this project should be the subject of rigorous environmental and financial examination and that the Hybrid Bill is not the way forward then please let your views known to Mr. Byers at the DTLR.

If you do have any concerns regarding local issues or have noticed areas where action is needed then please let me know.

Paul Rogerson

Member for Lacey Green, Speen and the Hampdens



dell

brothers

**Builders, Developers, Plumbers
and Decorators**

EST.1948

LACEY GREEN, BUCKS.

Tel: 01844 344342/346688

What's on in Speen & North Dean

June

26th Cream Tea Garden Party (Speen WI) Hampden Gate

July

4th Memoirs of a Grocer (Speen WI) Speen Village Hall
 6th Pub Night North Dean Village Hall
 7th Cricket day Speen Playing Field
 13th Speen Village Fete Speen Playing Field
 13th Art Exhibition (contact Glenn Hart 488528) Speen Village Hall

August

1st The Great Train Robbery (Speen WI) Speen Village Hall
 3rd North Dean Village Fete – competitions
 open to all (including non-residents) North Dean Playing Field
 4th Cricket day Speen Playing Field

September

3rd Lacey Green Parish Council Meeting Speen Village Hall
 5th Barn Owls (Speen WI) Speen Village Hall
 8th 200th Anniversary of the building of Speen
 Chapel – Sermon by the Bishop of
 Buckinghamshire Speen Baptist Chapel
 8th Cricket Day Speen Playing Field
 11th Read through for Speen Festival 2003 show Speen Village Hall
 15th Speen Supporters Group go-carting Oxford Stadium
 19th Speen & North Dean Golf Day Weston Turville
 21st Men's Breakfast – speaker from Chiltern
 Brewery (Speen Baptist Chapel) Speen Village Hall
 27th Hampden Group WI Meeting Hazlemere Community Centre

October

3rd Argentina in the Days of Peron (Speen WI) Speen Village Hall
 4th Wild Flowers in Buckinghamshire – talk by
 Alan Showler (Speen Horticultural Society) Speen Village Hall

November

2nd Ladies' Breakfast – talk by a clinical geneticist
 (Speen Baptist Chapel) Speen Village Hall
 7th Speen WI Annual Meeting Speen Village Hall
 30th Christmas Fair Speen Village Hall

December

7th Men's Breakfast (Speen Baptist Chapel) Speen Village Hall

Who's who in Speen & North Dean

Speen & North Dean News editor	Martin Stockley	488101
Speen Baptist Church - minister	Andy Gower	488758
Speen Fête - Chairman	David King	01844 344839
Speen & North Dean Good Neighbours	Suzi Rose	488696
Guides	Pauline Hall	488372
Speen Horticultural Association - secretary	Peter Dawson	488222
Speen Infants' School - head	Mrs Nayna	488321
Speen Infants' School PTA	Louise Wilson	563750
Speen Marquee - hirings	John Holmes	488420
Mother & Toddler Club	Tracy Salmon	488697
Speen Neighbourhood Watch	John Radford	488679
Speen Playing Field Association - secretary	Jenny Cowan	488546
Speen Pre-School	Janis Hearn	488440
Speen Residents' Association	Gordon Hall	488331
Riding for the Disabled	Gloria Holmes	488420
Speen Stores	Sandra Clarke	488258
Speen Tennis Court - secretary	Cherry Seekins	488355
Speen Village Hall - bookings and secretary	Catherine Butler	488412
North Dean Village Hall - bookings secretary	Megan Chinn	563074
North Dean Village Hall - chairman	(currently vacant)	
Speen WI - secretary	Mary Dawson	488222

Hughenden Parish Council	John Rogers (Chairman)	562041
Lacey Green Parish Council	Don White (Chairman)	488437
	Peter Symonds	488016
Wycombe District Council	Paul Rogerson	488315
Buckinghamshire County Council	Paul Rogerson	488315

Local Police contact number: 715352

The **JNP** Partnership

complete property solutions

JNP

ESTATE AGENTS ■ SURVEYORS & VALUERS ■ MORTGAGE ADVISERS ■ LETTINGS ■ LAND & NEW HOMES ■ FINE & COUNTRY HOMES

Residential Sales

A uniquely experienced team of professional selling property in High Wycombe, the Chilterns and South Bucks; offering free no obligation market appraisals seven days a week from our High Wycombe, Hazlemere, Prestwood, Princes Risborough and Park Lane, London offices.

Surveyors & Valuers

A qualified and experienced team of professionals providing a full range of surveys for all types of properties.
(01494) 528000



Fine & Country Homes

A bespoke service for properties of distinction benefiting from our tailor-made service and marketing strategy which includes professionally printed brochures, Park Lane, Mayfair and international marketing.

Land & New Homes

Our expert planning department can help you check out the planning potential of any piece of land - profit from your garden
(01494) 528000

Residential Lettings

An independent lettings service available from all our offices offering local and national marketing from our experienced lettings team
(0845) 0601000

Mortgage Advisers

JNP Financial Services are independent mortgage advisers with experienced consultants offering free financial advice from our dedicated
MORTGAGE SHOP (01494) 718080

High Wycombe ■ Hazlemere ■ Prestwood ■ Mortgage Shop ■ Princes Risborough ■ Park Lane, London

01494 528000

01494 718080

01844 245666

020 7070 1555