

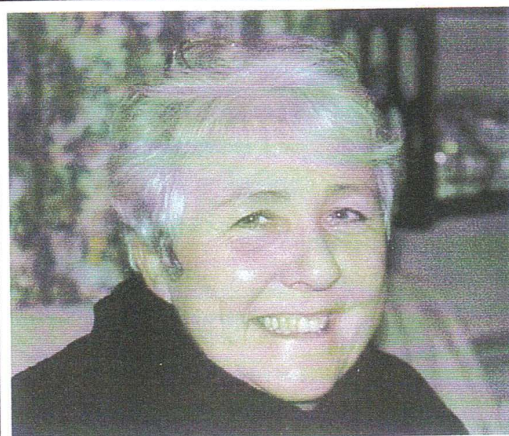
Speen and North Dean **NEWS**



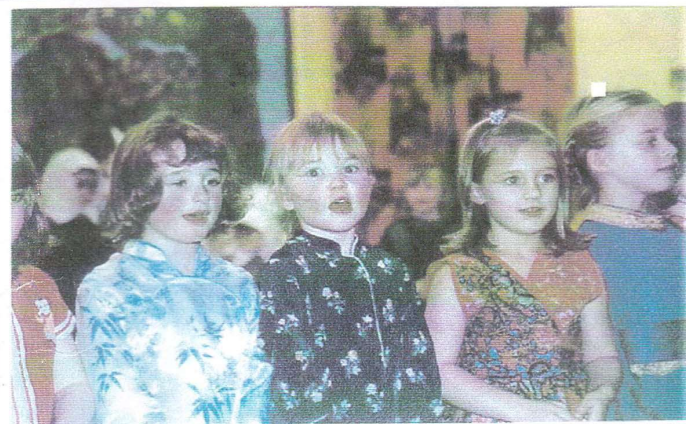
Issue 26 Spring 2002

IN THIS EDITION

**NEW YEAR HONOUR FOR
SPEEN RESIDENT**



**SPEEN INFANTS'
SCHOOL NEWS**



**LOCAL WILDLIFE
WATCH** by Peter Symonds



**MYSTERY OBJECT –
WHAT'S THIS?!**

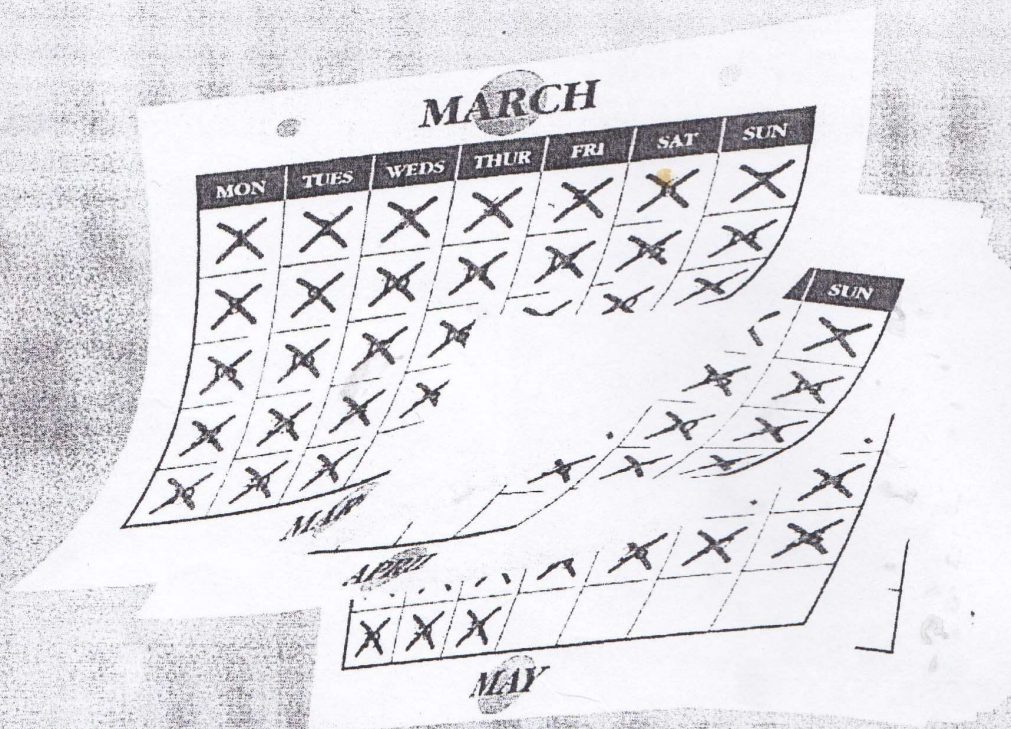


Philip

Green

& Partners

**EVERY DAY ONE OF OUR CLIENTS
MOVES HOME IN THE LOCAL AREA!**



If you are moving, why not join our growing number of satisfied clients. Call us ANY day of the week for a free valuation.

31 Crendon Street
High Wycombe, Bucks. HP13 6LJ.
Tel: (01494) 451010

Hazlemere Cross Roads
Hazlemere, Bucks. HP15 7LN
Tel: (01494) 711777

2 Wycombe Road,
Prestwood, Bucks. HP16 0PW
Tel: (01494) 868600

**Unrivalled colour property presentation
AND colour advertising!**

Editor's note

Our grateful thanks are due to James Jenkins and JNP Estate Agents who have kindly agreed to take on the entire print run for the Speen and North Dean News. JNP have met the colour printing requirements of the News for some time, and on their undertaking the entire print run we are confident that we shall be able to ensure a more consistent quality standard as well as a faster delivery.

Potential contributors please note that we are interested in all that goes on in our two villages, including advance information about planned events, and will endeavour to include most contributions, space permitting. If you have access to a computer, items are best received by e-mail or on floppy disc (preferably with documents in Word and photos as a jpg).

My e-mail address is majos@btinternet.com, telephone 01494 488101, address Driftway House, Coleheath Bottom, Speen HP27 0SZ.

Martin Stockley

Copy date for the next issue

May 24th 2002

euro-rentavilla.com

Looking for a
holiday home to
rent, or do you have
one to let out?

**Take a look at
our web site**

www.euro-rentavilla.com

01494 488190

Email info@euro-rentavilla.com

Holiday homes always required in England,
France, Ireland, Spain, Italy & other countries

Contents – issue 26

Speen Bucks meets Speen Berks	4
Wood carving in North Dean	6
News from Speen School PTA	7
District Council News	9
WI activities	10
Events in North Dean	11
Speen Village Hall - recent events	12
Planning applications	13
Speen group raises charity funds	14
Speen Fete 2002	17
Mock turtle anyone?	17
Pre-School news	19
Speen Baptist Church news	20
Bryn Haworth in concert	21
Paying Field matters	22
Lace Days in Speen	23
Music Camps celebrate 75 years	24
Walking the Chiltern Way	25
In memory of Laurie Kennedy	27
Letters to the Editor	28
Musical anniversaries	29
MBE for Speen resident	30
Wildlife Watch	33
St John's church choir	33
What's on	34
Who's who	35

Cover photographs from top :

- * Di Rainbow MBE – see page 30
- * Speen Infants' School play "The Emperor and the Nightingale" - see page 8
- * Vulpes vulpes (fox to you and me) - see page 33
- * A lacemaker at work - see page 23

SPEEN MEETS SPEEN



Visitors from Speen Bucks prepare to set off round Speen Berks, led by their Berkshire hosts

As far as we know, there is only one other place in the world called Speen, and that lies on the old Bath Road just to the west of Newbury. (Internet research reveals a road called Speen Street in Massachusetts, but it doesn't seem to be named after a town or village).

Contact with the Berkshire version of Speen was made back in 1999 as one of the Millennium Celebrations initiatives and a number of their residents came over here to take part in one of Bob Johnston's Village Walks. Naturally, they invited us back and so, on a heavily overcast (but, mercifully, mainly dry) autumn Sunday last year, Speen (Bucks) was introduced to Speen (Berks).

There were 16 of us from Speen (Bucks) or nearby, organised from this end by Bob, and we were met by our hosts at one of the local hostels. After lunch, and a group photograph for the local press, we set off for our guided tour. Speen (Berks) is now virtually a suburb of Newbury, but it retains some interesting features and we had a knowledgeable leader in the person of Steve Pascall.

Our first visit was to Speen Moor, an old water meadow alongside the River Kennet, and once a local source of peat. We walked as far as the new footbridge across the river, where part of the building material used for the bridge's construction is from the runway of the now defunct Greenham Common airstrip (former home of the women's peace camp), once situated not many miles from this spot.

From there, it was a short stroll back to Speen parish church, a lovely flint building standing apart from the rest of the village, with its huge graveyard spread before it. The graveyard appeared to be in need of the attentions of a strimmer, but the locals assured us that the reason it was left relatively unattended was because it is now a nature reserve. The church itself not only has an attractive exterior, it is also the first I, at any rate, have seen in which the interior is divided longitudinally into two halves. The original church dates back to the 11th Century, but during the 19th Century an extension was added to the North side, doubling its capacity and providing sufficient space for 300 worshippers. Even allowing

for Victorian church-going enthusiasm it does seem extraordinary to have made such a sudden, dramatic expansion of an established church - and at the vicar's own expense, we were told. The modern-day consequence, with today's depleted levels of attendance, is that the nave is now partitioned down the centre with a timber and glass wall, and services are once again confined to the old, original half of the building.

Near the top of the long path that leads down to the church from what was once the village centre, there is a natural spring housed within a small stone shelter, roofed and open on one side. This is Ladywell, possibly so-called because of its proximity to St Mary's church. On the day we were there two colourfully decorated sticks had been placed across the opening of the well betokening, our guide explained, a recent wedding of travelling folk. One wondered how many more such rites the well had seen over the years.

During a brief walk around what remains of old Speen it began to rain, so we were grateful to be shown into Steve's cottage, where our hosts were waiting to ply us generously with tea and mounds of delicious, home-made cakes.

It was nice to see another Speen and meet such friendly people, but as usual it was also good to come back to our own. Thanks, Bob, for organising such a pleasant day out.

Martin Stockley

D.J. Coles

Property Maintenance and Improvement

- * Painting & Decorating
- * Fitted Kitchens & Bedrooms
- * Carpentry
- * Loft Insulations & Boarding
- * Fence & Shed Erections
- * Gutter Clearing & Replacement
- * Garden Maintenance



No Job Too Small



Tel: 01494 816282

Mob: 07747783015

Mark Wengler

Project Management



**Mark Wengler
Project Management**

*Design Service
Extensions & New Build
Specialist Refurbishment*

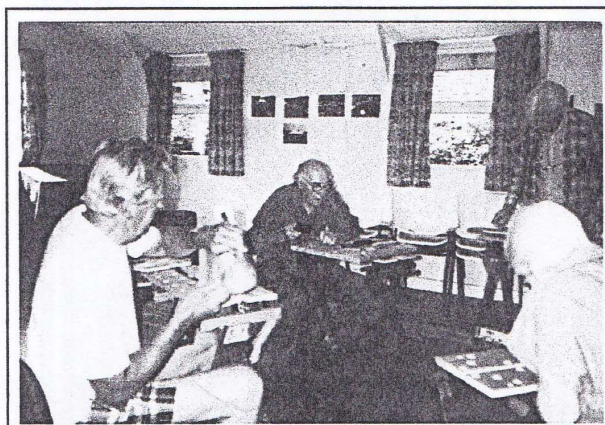
**Wayside Cottage
Hampden Road
Speen
Princes Risborough
Bucks. HP27 0RU.**

Telephone: 01 494 488025

IT'S NOT JUST DOOM AND GLOOM AS ONE BECOMES OLDER.

In 1998 the U3A came to North Dean. What is the U3A? It stands for The University of the Third Age – the third Age being people in their more mature years. Our Wycombe Group belongs to the Thames Valley Region of the Third Age Trust.

Once a month we all meet in Wycombe for a general Meeting at The King's Centre, where we usually have



Wood carving in North Dean Village Hall

speaker on a wide variety of topics. Then there are "groups" ranging from croquet, computers, discovering art, French conversation, ornithology etc. through to wood carving each with its own convenor.

This is where North Dean comes in, as it is home to the wood carving group convenor John Crick. Every fortnight we meet in the village hall, lay down a large piece of black plastic to protect the superb new floor, get out the Black and Decker work-mates and we are off chipping away. The first meeting was December 1998 when 8 carvers met and the group has steadily continued with 4 of the originals still attending.

We now total 7 carvers, 2 ladies and 5 men. We beaver away all morning with a brief respite for coffee and biscuits. Up until last year John Crick had brought his own tools but the "Lottery" came up trumps and financed us to the tune of £750.

Isaac Lord was particularly generous and gave us equipment and so brought the sum up to £1000. We have wonderful sharp tools and new work benches so it is a joy to indulge in this new hobby. At the fete at North Dean we set up a table for all to see our carvings.

We meet on the 2nd and 4th Thursday morning each month and we would welcome any additional members who wish to "try their hand". All the equipment can be provided and assistance given; just ring John Crick 01494 521557 to warn him that you intend to come along.

Janet Johnson

STEVE NEWMAN'S TREE & HEDGE SERVICE

Holly House, Archway, Speen, HP27 0SB
01494 488790

**A friendly, personal service offering advice and free quotations
for all your Arboriculture needs**

- Surveys and reports
- Sympathetic tree reshaping
- Tree thinning to allow more light into your home and garden
- Removal of dead, diseased or dying timber to rejuvenate tired trees and eliminate the worry of dead wood damage to your own and others' property
- Felling or dismantling of trees which are 'past their best' or are in a dangerous condition
- Topping of 'out of control' conifers
- Fruit tree pruning for more attractive and productive trees
- Tree planting and tree relocation
- Hedge cutting and shaping

We are fully insured and provide a tidy and efficient service

News from Speen School PTA



Speen infants' School reception class 2001-02

It can't have escaped your notice that many of our village events have been increasingly lively, not to mention high-pitched recently. Yes, Speen and North Dean are packed with children. Our village school is flourishing, and Mrs Nayna and Mrs Lewton now have 52 children in their care. In the circumstances, everyone at the school appreciates more than ever the team of villagers, organised by Gloria Holmes, who listen to the children reading every week. (And if anybody else could offer an hour or two a week to supervise a session like cookery, crafts or computer work with a small group of children at the school, they would be most welcome! Please contact Mrs Nayna on 488321).

As parents, of course, we appreciate how lucky we are to have such a friendly little local school to start our children off in formal education; but one of the special things about Speen School is that it is a centre of the community for everyone in the villages of Speen and North Dean, whether or not they happen to have small children.

The Parents & Teachers Association (PTA) aims to support the school by raising money for 'extras' that school funds cannot stretch to, like

'theatre in education' visits, books, computers and so on. And of course we try to organise fundraisers that everyone enjoys.

In December, the school held its first Christmas Fair for some years. A highly creative team led by Clare Radforth and Julie Blundell filled the hall with a marvellous array of Christmas decorations, gifts and goodies. We had lots of local support and managed to raise almost £700, which is a staggering amount for such a small school. After such a success, I hope that we shall be able to make the fair a regular Christmas event.

We have several activities planned for the coming months. We hope to have a visiting theatre group at the school on Saturday 20th April; a children's treasure hunt is also planned for a Sunday in May; and plans are afoot for an entertaining evening of Murder, Mystery... and Dinner in the autumn. Keep a look out for publicity for all these events.

In the meantime, please make sure you get your summer ball tickets early. We now have a maximum of 18 tables in the marquee (the school's new adventure playground impinges on the space).

(Continued on page 8)

Last year we sold out of tickets, and we really don't want to disappoint anybody this year. Tickets can be ordered from Sarah Seabrook (488877), myself, or any member of the PTA.

Louise Wilson

SPEEN MIDSUMMER BALL 2002

The date has been set for the annual Speen Ball

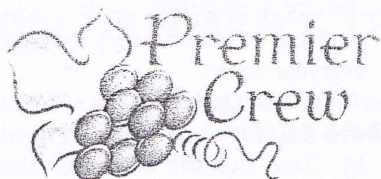
SATURDAY 22ND JUNE 2002

This promises to be great fun and the highlight of the Speen and North Dean social calendar so put the date in your diary!

Tickets will be going on sale early spring
Contact Sarah Seabrook 488877, or
Louise Wilson 563750.

In December, every child in the school took part in the school play, "**The Emperor and the Nightingale.**" There was some fine singing, acting and dancing, very attractive set and costumes, and it was altogether an exceptional achievement for a cast which ranged in age between four and seven years old!

Also in December, the school's Christmas service took place at the parish church in Lacey Green and some of the children are pictured below in a Nativity tableau for the occasion.



A Taste of France in West Wycombe

Our wine shop in the cobbled courtyard of
THE GEORGE & DRAGON at West Wycombe
has a selection of wines we have imported from small producers
and some of the lesser known and unheralded regions of France.

*We have a wide selection of gift
packages of our very particular
wines to make your gift
shopping easy. Prices range
from £12.00 upwards.*

Shop opening hours:
Friday 12-3 pm & 6-8 pm
Sat. 12-3 pm & 6-8 pm
We offer free delivery to readers of this
magazine!
For details: ring 01494 513131
Or fax 01494 462432

Wycombe District Council News January 2002

On the local front I am pleased to say that the **Petition** for improvements to the kerb line opposite the shop to provide a safer crossing point was favourably received. Thanks to Kristy and Cherry for their efforts. I have had agreement from the county engineer that the work can be put into the programme which should result in works being carried out in the next few months. Other recent successes were the action taken to re-paint the white lines in and out of Speen, cleaning of the signposts together with the additional winter gritting of the Hampden Road.

Progress on raising the profile of the **Rural Agenda** is being made and I am lobbying hard for funding for rural environmental measures to be included into next year's budget. If this is successful funds for capital works could be available for projects that enhance the quality of life in rural communities.

Please do try to attend the **Parish Meeting** on 11th March, as the Community Plan will have an effect on us all. (see separate sheet for more details). If you do have any concerns regarding local issues or have noticed areas where action is needed then please let me know.

Paul Rogerson

Member for Lacey Green, Speen and the Hampdens



COLES & BLACKWELL

ACCIDENT REPAIR & SERVICING SPECIALISTS

Walters Ash, High Wycombe, Bucks HP14 4UX

Opposite the Bradenham Hill Top Junction



Mechanical

Bodywork

Monday to Friday

8.00 - 5.30

Saturday 8.30 - 12.30



- ❖ All makes of cars serviced
Please phone for details
- ❖ Breakdown & Mechanical repairs
- ❖ Crypton tuning and diagnostics
- ❖ Tyres all makes, low prices
- ❖ MOT Testing & free re-test
- ❖ Brakes & Clutches
- ❖ Exhausts & Batteries

FREE ESTIMATES
01494 563102

Established 1959

***Our reputation
is your
guarantee***



- ❖ Insurance & private accident repairs - free 'R' Reg loan cars
- ❖ Approved by all leading insurance companies
- ❖ Chassis repairs on alignment jig
- ❖ Windscreens
- ❖ High gloss paintwork in our low bake oven
- ❖ Welding

Speen WI News Report

Some of our members went to the Autumn Group Meeting held at Great Kingshill, at which the Speaker, Jim Keating from Kew Gardens, described the effects of the great storms at the end of the twentieth century on its trees and those elsewhere in the country. Each Institute within the Group was asked to bring a flower arrangement based on this theme of broken trees and a delightful display was provided. Speen's contribution did not come out on top, the winners being Holmer Green WI.

In October Mrs Sandra Webb introduced us to the delights of Chinese Wok Cookery. Not only did we enjoy the sights and smells of the delicious dishes so quickly and expertly produced, but we also tasted all of them. Mrs Webb will produce dinner parties in your own home and the thought of it was tempting to many. However as a first step many members purchased her excellent recipe leaflet in the hope of approaching something vaguely similar to her excellent offerings.

As usual in November the Annual Meeting was accompanied by a Pot Luck Supper. The Committee's report reminded members of the very eventful and enjoyable year which had just ended and gave the chance to look forward to what was to come. Also in November Mrs Sylvia Eastgate gave her talk postponed from June when she explained what Tai Chi means to her and helped members to try some of the movements for themselves. Accompanied by delightful oriental music,

the evening provided a very calm and relaxing environment.

With only three weeks to Christmas, Pat Trunkfield and Pam Messenger came to the December meeting and gave a very professional flower arranging demonstration. Then came the challenge as everyone tried to create their own masterpiece for the dining room table or the front door. The items produced were many and varied, but the results were taken home in triumph with another item crossed off the list of things to do. The Christmas spirit was further enhanced by the consumption of a festive buffet and mulled wine. An excellent way to end the old year.

And the new one started with a social meeting in January. This was a time to catch up with all that has been going on both in the WI and in the village and to test the brain power with a quiz. After someone had visited a friend in Wycombe Hospital and found a definite shortage of vases, members had decided to buy and present 10 of them and this had been done just before Christmas (see picture, below). The programme for 2002 was unveiled (see What's On, page 34 in this publication) and promises to be every bit as interesting as last year. There are also plans to hold a family Treasure Hunt in May and there will be two supper evenings during the year. Plenty to look forward to!

Jean Morris

Speen WI member Gloria Holmes (centre of picture) presents a gift of 10 flower vases to hospital staff for the benefit of patients in the new Orthopaedic ward at Wycombe Hospital.



A Review of Events in North Dean

The autumn programme of events organised by the Village Hall Committee started with a Car Treasure Hunt in September. We were guided along the highways and bye-ways, searching for clues, avoiding the red herrings and enjoying the beautiful countryside until the trail brought us back to Pigotts where a cheese and wine supper was provided.

October saw a new venture, a 'Pub Night'. A bar licence was obtained and a pub atmosphere was created, including dartboard, dominoes and cards. Enjoyed by all who ventured out but this 'pub' definitely needed a few more customers.

Under the expert tutelage of Helen Verd-court in November we tasted wines from Chile. Helen presented both red and white through a wide range of prices, ending the evening in a rosy glow and tucking in to an excellent cheese-board.

Later in November we had an interactive, 'hands-on' Race Night, no films but still with plenty of noise. This was an enjoyable and profitable event, giving a welcome boost to Hall funds.

The festive season was celebrated with the Committee Dinner to which guests were invited, and also the Village Gathering, with games and a bran tub for the children, chat and mulled wine for the grown-ups, and carols for all.

The New Year was welcomed with a lunch for the 'Young at Heart', alias the seniors, who enjoyed a delicious meal followed by a Dave King quiz, which proved we may be young at heart, but none too bright in the head.

Lillian Cash

North Dean Tapestry

The North Dean Tapestry group have been beaver- ing away and are now seeing an end to all their hard work, with thirty three pieces of canvas almost completed. The next couple of

months will see the work professionally joined and framed, and the finished tapestry is to be hung in the Village Hall in time for the Golden Jubilee Celebrations in June.

Dorothy Hazell.

Policing North Dean

North Dean residents are asked by Hughenden Parish Council to report any incidences of criminal activity, including vandalism, to the Police on 01494 465888 (regardless of whether they expect a suitable response!) in order to help the Police to compile the statistics that could help make the case for more policing of the area. The possibility of using Special Constables in local villages in the Parish is also under consideration. Anyone interested in becoming a Special Constable should contact PC Oxberry on 01494 715352.

Hughenden Builders

Established 22 years

All Building Works Undertaken

- ◆ Extensions.
- ◆ Alterations.
- ◆ Loft Conversions.
- ◆ Roofing – all types.
- ◆ Drives, Block paving, Tarmac etc.
- ◆ Patios, Walls, Garden landscaping.
- ◆ Plumbing, Plastering, Carpentry.

Planning Service.

Clear & Concise Plans

Single Story £150.00

Two Storey £300.00

(plus council fees)

Free detailed estimate with drawing.

Planning fees returned if tender accepted.

**171 Main Road
Naphill**

**Tel: 01494 562937
01494 438057**

SPEEN VILLAGE HALL



Every year Mr. David King and his family organise our Village hall Quiz and this year on Friday 12th October we once again enjoyed the usual sausage and mash supper. We only had eight teams this year (no Pre- School) and the Women's Institute entered the only all women team!! There followed lots of laughter and arguments about the many varied questions asked and at the end of the evening the result was a win for the Village hall team with the PTA a close second and the lace-makers third.

On December 8th, a beautiful crisp, sunny day, if you were around the village during the morning you may have come across Father Christmas riding in an open topped car ringing his bell (many thanks to Suzi Rose and Jeremy Symondson, pictured above) and inviting everyone to the Xmas Fair at the Village Hall. At two o'clock a queue had formed awaiting Father Xmas's arrival to get proceedings started. The helpers were soon very busy selling cakes, various hand made toys and crafts and beautiful wood turning - all ideal Xmas gifts. The tombola was well stocked, the raffle was busy too and all this was helped along with mince pies and mulled wine. After all the clearing up was finished we found it had been a very successful day bringing the Village hall £416 to help towards its upkeep. Thank you everyone for your support.

Catherine Butler



**dell
brothers**

**Builders, Developers, Plumbers
and Decorators**

EST.1948

LACEY GREEN, BUCKS.

Tel: 01844 344342/346688

PARISH COUNCIL PLANNING APPLICATIONS

North Dean (Hughenden PC)

Littleholme: *insertion of 2 dormer windows in roof conversion - recommended for refusal*

Old House Farm: *erection of repositioned agricultural building - no observations*

Old House Cottage: *erection of balcony over existing ground floor extension (retrospective) - recommended for refusal*

Glasyers, Piggotts Hill: *erection of conservatory to rear - no objection provided 50% Green Belt rule not contravened.*

Speen (Lacey Green PC)

Cherry Tree Cottage, Studridge Lane: *tree works to horse chestnut - no objections*

Little Acres, 2 Cornerways: *variation of permission in connection with ground floor window alterations - no objections*

Valley Cottage, Highwood Bottom: *erection of garden room - no objections*

The Forge, Flowers Bottom Lane: *conversion to 2 bedroom dwelling - no objections provided application accords with Local Plan, Green Belt and AONB requirements*

Bottom Cottage, Highwood Bottom: *single storey conservatory to rear - no objections*

Turnip End Cottage: *erection of detached garages, replacement of existing roof to stable and tractor store, new summer house - site meeting proposed*

Chiltern Gables, Grubbins Lane: *2 storey side extension, single storey rear part extension, porch extension, dormer window for detached garage - site meeting arranged*

'RISBORO' OSTEOPATHS

and natural health centre

Tel: 01844 - 275055 for appointments

**Incorporating: ACUPUNCTURE and HOMEOPATHY
FREE assessment or advice**

Conditions we treat include...

Back ache

Sciatica

Headaches

Tennis elbow

Painful knees

Jaw pain

Sinus problems

Menstrual disorders

Stress and nervous tension

Shoulder problems

Sports injuries

Stiff necks

Sore feet

Stiff joints

Trapped nerves

Irritable bowel

Arthritic pain

**Also available: Cranial Osteopathy for Babies, Children and Adults
Homeopathy for adults and children**

26 Wycombe Road, Princes Risborough, Bucks

Speen Charity News

Once again I am able to say "Well done Speen!". This time I am delighted to report that the response to the hastily posted note about collection of foreign currency yielded a fantastic response. A gang of enthusiastic Speen Supporters Group ladies sorted through the extraordinary range of currencies collected over the years, during a working lunch. Fortunately Roger Sharp from St. Francis Hospice took the lot and returned cheques for £441.00. The information we printed inspired many of you to ring and offer ideas for fundraising. Ian Waterman is running in the London Marathon for the Speen Supporters Group so please be generous when he asks for your signature. New residents Geoff and Clare Hayward Smith have set up a fortnightly quiz on Thursdays at the King William (first of these on 14th February from 8pm) where you can simply turn up and form teams to answer a variety of questions for £1.00. Apart from raising money, these quiz nights enable villagers to

still being counted but the tin at the Stores collected £84.76 so we really are doing our bit to help raise funds.

There was a terrific response to the Charity Supper and this was sold out ten days prior to the event. Not only was there an excellent supper enjoyed by all but 5 speakers gave us a different viewpoint about work in the hospice movement locally. Roger Sharp from The Hospice of St. Francis told us how the staff organised a restaurant to bring in an anniversary supper on silver platters for a patient and his wife because the patient had always treated his wife to a special dinner on their special day. Margaret Maxwell Cook (South Bucks Day Hospice) said she thought Speen was unique in that it was unheard of for voluntary organisations to spring up out of the blue as we have done. She said how patients were able to come to Edie Pusey House on Amersham Hill to be with others in the same situation and "throw off their wigs". Sue Warr from Florence Nightingale House at



Presentation of cheques to representatives of 5 hospices from the efforts of the Speen Supporters Group

drop in and meet with friends and utilize the pub.

Two other charity collections went on over the Christmas period. Thanks to Speen Stores Sandra and Margaret Handcox, Iain Rennie Hospice at Home benefited once more from the generosity of Speen Village. Many villagers pledged their Christmas card money to the charity instead of writing cards to each other. The box in Speen Stores collected £105. Also you will have noticed the sudden arrival of Father Christmas Beanies for the South Bucks Day Hospice in the Stores, at King William IV and the Old Plow. The latter two boxes are

Stoke Mandeville told us about their home from home areas which are much more than just a bedroom. Robert Breakwell from Iain Rennie Hospice at Home gave us the history of Iain Rennie, a young man who wished to be nursed in his own home and how the organisation rose from a group of volunteer nurses granting his wish. Finally Sharon Glazier, a resident of Lacey Green, gave us such a sunny insight into the happy atmosphere at Helen House where very ill children and their families

(Continued on page 15)



Members of the Speen Supporters Group counting the foreign (pre-Euro) currency collected for charity. From left to right - Christine Oliver, Clare Haywood-Smith, Suzi Rose, Bronwyn Davies and Marjorie Stockley

come for "a holiday". Sharon also stated that, unlike the other charities, Helen House relies solely on fundraising as they receive no government funding. Douglas House is still to be funded but is intended to care for young people from 16 to 40 covering a much needed area of care. It was an excellent evening, some moved to tears, others totally enlightened about hospice work and all of us fired up to carry on supporting these worth while and local causes. A measure of the success of the event is that it raised a further £1015 for the hospices - a truly fantastic result!

The Speen Supporters Group are working hard on the Ladies Fashion Evening at the Town Hall. A note for your dairy Ladies, Wednesday 10th April. A special after-work mini business wear fashion show will commence with canapies and wine at 5pm costing £15.00. The evening fashion show starts at 7.30 and will cost £25.00 per head including two course supper. All fashions supplied by Manhattan in Beaconsfield. It should be a fabulous evening. If there are sufficient numbers from Speen, and we suspect there will be, we can organise a coach. Speen and North Dean folk please contact Christine Oliver, who is co-ordinating local bookings, on 488409.

Don't worry men - we haven't left you out. We've booked Oxford Stadium on Sunday 15th September for a Go-Karting Endurance Extravaganza starting at 2 and ending at 5. We need keen people (not just men!) to form teams of ten people in each team and we hope to run 10

karts - the more the merrier. Again if we have good numbers we will organise coaches. Get in touch with me if you are interested.

Remember this is the time of year when we all come knocking on your door for Save the Children/Children's Society/Christian Aid so make sure you have some change when we come round. Phew! Our halos are really shining here in Speen. Thanks to all of you for your enthusiastic response when times are very hard for many of you.

Suzi Rose 488696

More charity fund-raising

Bring and buy coffee mornings organised by Marjorie Stockley recently raised £95 for the Chilterns Multiple Sclerosis Centre at Halton and £80 for Calibre, the recorded book service for the blind.

A coffee morning organised by Sue Taylor provided a further £100 for the hospices mentioned in Suzi's article above.



Fancy Dress Parade & Competition

In this special celebration year!

The organisers are asking for people to attend the fete in fancy dress and win prizes for the best costume.

The Competition is for the best self made costume in the different age categories.

The theme is:

Kings and Queens
and the

Royal Family Through The Ages.



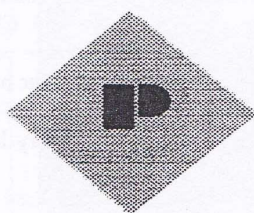
Judging will take place on the day of the fete.

Great Prizes to be won!

Start making your costumes NOW!

**Speen
Golden Jubilee
Fete 2002**

Saturday, 13th July 2002
Speen Playing Field



PARTRIDGE & CO.

Chartered Certified Accountants

The Gables, Market Square, Princes Risborough,
Buckinghamshire, HP27 0AN

Tel: 01844- 343900; Fax 01844-343903

E-mail: accounts@partridgeandco.i-way.co.uk

Are you fed up dealing with Inland Revenue Self-Assessment Returns?

Why not speak to Richard Partridge and let him provide a Full Tax Return Service for you. We have the market leading professional Tax Return software designed for all types of personal and company tax returns.

As Registered Auditors and Business Advisors, we specialise in providing a highly personal service to owner-managed companies, trades and personal tax clients, covering all aspects of business accounting and taxation.

NB: We have now moved to offices in the Market Square Princes Risborough.

This year's Speen Fete...

will be raising funds for the Chiltern Multiple Sclerosis Centre at Halton. They have decided that the proceeds from the fete and the evening will all be pooled and 40% will go to the centre.

For those of you who are unfamiliar with its work, here is a brief idea of what goes on up there. Donald Bedford, an immunologist, has been Director of the centre for 10 years now and he's the perfect man for the job. A kindly man with a great sense of humour, he makes all his patients feel very special. "We offer treatment, help and support to those people who come to us for help with their symptoms." The treatments include physiotherapy, reflexology, manual lymphatic drainage for lymphoedema plus advice, counselling and companionship. There is a posture, walking and wheelchair clinic to ensure each individual's needs are catered for.

Of particular interest is the hyperbaric oxygen therapy. Dr. Bedford describes this increased air pressure treatment as the Heinekin effect (reaching the parts that others cannot). Patients sit in a supportive seat within the "diving" chamber and breathe pure



oxygen through a mask whilst the pressure in the chamber is raised gradually. A dive lasts for one hour and is monitored and controlled from the outside by an operator who keeps in radio contact throughout the dive. No-one really understands why this treatment is effective but it really appears to provide relief of some of the symptoms of MS

What is MS?. Surrounding every nerve fibre – the pathways along which messages and instructions are passed between different parts of the brain and the rest of the body – is an insulating wrapping of fatty mem-

brane called myelin. In MS the myelin is broken down in patches throughout the central nervous system (the brain and spinal cord). The damaged patches become scarred (this is where the term comes from – multiple sclerosis means multiple scarring). Without the myelin coating nerve messages cannot travel normally and become garbled or lost and the instructions sent by the nervous system to different parts of the body are disrupted. Typical age of diagnosis is late twenties to mid-forties. Symptoms include tingling or loss or distortion of touch, blurred vision, extreme fatigue and dizziness leading onto loss of co-ordination of movement, clumsiness, slurred speech and sometimes muscle spasm. MS is usually characterised by attacks followed by periods of recovery although every attack tends to leave residual problems.

The picture shows some patients receiving physiotherapy but one can also see how the patients enjoy the contact with others and the Centre is sunny with a warm atmosphere.

Everyone at the Centre is delighted Speen is helping to raise funds. If you would like further information about the Centre please contact Donald on 01296 696133 and he would be delighted to speak to you.

Suzi Rose

Recalling

memories of Alice in Wonderland from the Speen Festival - Jill White found this old recipe for Mock Turtle Soup!

Bone half a calf's head, blanch it and cook it for two or three hours in water with salt in it. Take out the head and press it till cold. Cut into small pieces 1 lb of veal, 2 lbs of gravy beef, 6 ozs of lean bacon, 1 onion, 1 carrot, 1 turnip, a celery stalk, put all these ingredients into a saucepan, and fry them a light brown in 2oz of butter, then add 4 ozs of flour and brown that also, and pour in gradually 3 qts of good stock and also the 2 qts of liquor in which the head was boiled. Put in a bouquet garni, some peppercorns, and salt, bring the soup to the boil, skim it well, and simmer slowly for three hours. At the end of that time strain the soup and return it to the saucepan. Add a little lemon juice and the calf's head cut into neat squares, more seasoning if required, and serve very hot.

Mmmmmmm.....???

Speen Hair & Beauty

Hairstyling for all the family

- New French colour range
- Senior citizen discount
- Hair up for special occasions
 - Wedding packages
 - Gift vouchers

Also

Alternative therapies with ITEC qualified therapist

Reflexology
Indian Head Massage
Massage

Gift vouchers available

10% discount given on all alternative therapies for the month of
November 2001 on presentation of this advert.

Friendly professional advice given anytime

Situated above Speen Stores, Speen

Telephone (01494) 488899

NEWS FROM SPEEN PRE-SCHOOL

Speen Pre-School has been buzzing with activity over the last few months. Last term, the children built a giant yellow submarine in which they explored the sea before blasting off into outer space to learn about the stars and planets. This term we are staying closer to home and focussing on "opposites" and nursery rhymes.

course, haggis accompanied by a wee dram or two! The tickets have sold out – thank you to everyone who has helped in so many ways.

Thank you too to everyone who supported our Christmas tree fundraising scheme this year. The tree recycling service was particularly successful - a flurry of last minute orders helped to make the venture a really worthwhile event which



Little Angels at Speen Pre School Nativity play

The children thoroughly enjoyed the Christmas season at Pre-School which culminated in a wonderful nativity play, "The Little Angel", performed with great style and enthusiasm. The children had a further opportunity to show off the Christmas songs they had learned to parents and friends at the Pre-School Christmas service held at the Speen Baptist chapel at the end of term. Father Christmas (who featured a Scottish accent this year!) caused a major sensation at the Christmas party. Most children were delighted to see him; however, others were less sure about our jolly, bearded visitor and preferred to send their Mummies to collect the presents he had brought them!

The Scottish theme is continued at our Burns Night Dance, which will have taken place by the time you read this. We are anticipating a fantastic evening with live band, piper and, of

we hope to repeat next year. Special thanks to Pete Johnson who collected the trees for us.

Despite the tough financial situation, we are constantly striving to improve the facilities we offer our children – this term we have been fortunate to receive a special grant from the local authority to spend on toys with a multi-cultural theme. We are arranging for a local photographer to come to Speen one Sunday afternoon in April – look out for the posters nearer the time if you would like to have your family's picture taken.

We still have some places available for children wishing to join our provision. Please give Janis Hearn, our Pre-School leader a call (Tel. 488160 or 488440) for further information or to arrange a time to pop in to see us in action.

Sandy Mitcheson on behalf of the Speen Pre-School Committee

News from Speen Baptist Church

Andy writes:

Carols by Candlelight

The mellow light of flickering candles assisted a full church of young and old as we sang carols and listened to Bible readings of the Christmas story. And yes, there was some more origami - as we folded and tore paper into shapes that formed links in the story:

- an A4 sheet folded twice to represent how God compressed Himself to become a man in Jesus;
- a tear in the paper representing how others can hurt and harm us;
- a second tear representing how our attitudes damage relationships;
- a third tear for how materialism gone wild harms individuals, families, society and the planet;
- a fourth tear for how our insecurities and lack of inner peace cause us to strive for superiority over others;
- a final tear for the way we think we can do it all ourselves and deny others, including the maker of all, the right to speak into our lives.

We ended with some very fragile folded pieces of paper, but as we opened them out, they formed very attractive patterns - all the more attractive for being joined together with other fragile sheets. This opening out was symbolic of the Christmas invitation to be open to God's healing and restoring love, and the impact knowing His love makes on individuals and communities.

Many thanks to all who contributed to the collection during the Carols by Candlelight service - over £340 was raised to help the national and international work of Spurgeon's Child Care charity among poor and neglected children and young people.

Christmas Day Celebration

It was good to be together to celebrate God's goodness with music and song - but the picture below is only accurate in that our 12 or so musicians include a saxophonist - no tambourines or banner dancers - though I think it captures something of our excitement as we gathered for worship on Christmas morning. This was the third service in as many days, and I have to confess to getting a little carried away. We do not normally take an offering on Christmas Day but for some reason



my brain flipped and I asked the stewards to receive a collection. If you did contribute - many thanks, and sorry, but I'm not sure how we would manage refunds!



Support for Saunderton Hostel

We are happy to arrange collection and delivery to the hostel of items that you would like to give. Folk often arrive there with very little and anything we can provide - from teaspoons to washing machines - is very gratefully received. So if there are things you would like to give but did not know how to get them there please contact Kate Slade on 488262.

Men's 'Breakfast with Friends and ...

Dr Rodney Holder' 1st December

Our astrophysicist guest eloquently explained the origins of the universe: how it was formed and how finely tuned are the forces that hold it together. Clear evidence for a Designer, Rodney maintained, since the only other available theory is that this universe is one of multiple universes - except that this one happened to work out all right when most of the others did not!

Alpha Course

An Alpha Course is currently running on Tuesday evenings. If you missed this one and would like to come, the next course will start during the week commencing 23rd April.

Happening Soon:

9th Feb - Ladies Breakfast: Bethan Jones.

23rd March - Men's Breakfast: David Merriman.

Summary of Weekly Church Activities

- Sundays:** 10:30 am Worship for all ages
incl. Creche, Sunday School for 3's-12's and Teens discussion group.
12:00 Fair Trade Stall in church hall
(2nd Sunday in month).
6:00 pm Worship Group.
- Mon:** 9:00am Meeting for Prayer - at a home in the community.
- Tues:** 7:45pm Alpha Course -
5 Abbotswood
- Weds:** 10:00-11:30am "Time Out"
10:00-11:30am Daytime Home Group
- Chinysnook, North Dean
8:00-9:30pm Evening Home Group
- at a home in the community.





Peter Salmon continues the long and distinguished musical traditions of Speen Baptist Chapel at the Carols by Candlelight service

Bryn Haworth in Concert in Speen Baptist Church

Everyone who went to the Baptist Church on Friday, 8th October was captivated both by Bryn Haworth's story and his amazing musician-ship. His early interest in rock music saw him move from his native Lancashire to San Francisco and follow the typical lifestyle of the rock star. Bryn was candid about the excesses of this period and the subsequent feelings that led him to give it up and return to the UK. He moved to Wales and adopted "the Good Life" embracing vegetarianism and frutarianism but still confessed to retaining his liking for burgers! In 1974 Bryn and his wife Sally became Christians and this overwhelming change in every aspect of their lives also brought a strong gospel influence to his music.

This was apparent for example in his version of Curtis Mayfield's song which starts "People get ready, there's a train a coming" which had the audience singing along. There were many other songs from the 70's, which certain sectors of the audience instantly recognised, for example "Spirit in the Sky". Bryn is a musician with an obvious love of his instrument and his playing of the slide guitar was virtuoso. My particular favourite was a Mahalia Jackson song, which he did as an instrumental (using a G-tuned electric guitar for the guitar buffs reading this) with lovely use of harmonics. There were a number of Bryn's own compositions, several of

which have been recorded by other artists including Lulu, Sandy Denny and Mary Black. For those who have wondered at his connection with Speen, it came through Sally whose parents had lived off Grubbins Lane.

Overall it was a thoroughly entertaining and uplifting evening, and I for one can't wait for Bryn to return.

Wynne Davies



PLAYING FIELD MATTERS

B O N F I R E N I G H T .

This year's Bonfire Night on November 3rd, 2001 was one of the most successful in recent years. Thanks to the perfect weather we had a huge number of people attending. There was just enough food to go round, with the last person in the queue getting literally the last sausage! The firework display was very impressive, as was our overall profit....£1,319.02. This all goes towards the maintenance and upkeep of the field and its equipment, as well as building up the fund that will be needed for essential work on the roof before too long. Last but not least: there were 4 joint winners of the Guy Competition. They were Daniel Gregory, Mark Morphew, Alex Symonds, and Ross Symonds.

V I L L A G E C H R I S T M A S T R E E .

In December 2001 we had the first village Christmas tree. It stood on the grass verge next to the Playing Field, and was beautifully illuminated

with coloured lights. It was officially switched on by Sandra Clark on Friday 7th December. There was carol singing led by members of Speen Choir, and the Playing Field Committee served mulled wine and warm mince pies. Once again we were blessed with good weather. Perhaps this will become an annual event?

G E N E R A L U P K E E P

We installed new bins and benches in November 2001 after considerable effort. We were extremely disappointed to see that within a very short time (ie before the end of November) graffiti had been spray painted onto the benches, bins, and the children's slide.

Villagers are reminded - **AGAIN!!** - that dogs are **NOT** allowed on the field, in the interests of hygiene. Recent fouling has caused problems for many field users, particularly the children.

Jenny Cowan

WE'VE MOVED!



B. A. HOGG (Motor Body Repairs) Ltd.

Unit 3
Fairview Industrial Estate
Kings Road
High Wycombe
Bucks HP11 1RY.

Oh Yez! Oh Yez!
What Can We Do for You?

- ◇ Free estimates, at any location.
- ◇ Free collection and delivery service.
- ◇ Easy access and ample parking.
- ◇ Account facility available
- ◇ Fast & friendly service.
- ◇ Return to home service.
- ◇ Company & fleet service.

Interested?

Ring: 01494 512020 (3 lines)



**ZURICH
INSURANCE**

ESTABLISHED 1972

THE INSURANCE SERVICE

churchill



LACE DAYS

Lace making is a traditional Buckinghamshire craft with very strong connections to Speen. The census for 1851 reveals that nearly 90% of the homes in the village at that time contained at least one lacemaker. Their ages ranged from 8 to 85, and the production of lace was no hobby - it was an essential part of the household income. The lace was sold to buyers from the lace merchants and the income, meagre though it was, provided an essential supplement to the poor wages earned by the menfolk, most of whom were either agricultural labourers or engaged in the timber trade in some way or other.

As with so many cottage industries, mechanisation spelt the end of hand-made lace as a viable commercial proposition, and soon after the 1851 census the number of individual lacemakers was in rapid decline. A few well-to-do local people tried to keep the trade going by setting up Lace Associations to collect and sell lace, cutting out the dealers and preserving traditional patterns (there was one such collective in Lacey Green), but their efforts were of little avail and the industry shrank to almost nothing.

A vestige of the old skills still remained however, and in the 1950s an entirely new generation, with more time to spare and a willingness to learn, started to revive interest in traditional lacemaking as a craft pursuit. Two who took up the pillow and bobbins with enthusiasm were Winnie Lowes of Studridge Lane and her daughter, now Mrs Jacqueline King.

There were plenty of others who shared their love of lacemaking, and in 1987 Winnie and Jacqueline decided to establish an annual "Lace Day" in Speen, when lacemakers from all around the area could meet to exchange ideas and experiences, see what other people were doing and generally have a sociable day out.

When I attended Lace Day in October last year, the Village Hall was full. There were ladies from Aylesbury, Booker, the Chalfonts, Downley, Hazlemere, Missenden, Risborough and Speen all seated round the tables, each working on a piece of lace (although one confessed not to be a lacemaker and was working a tapestry!) and the happy buzz of conversation left one in no

doubt that they were thoroughly enjoying themselves. There were many varieties of lace to be seen in progress, such as Bucks point, Torchon and Honiton, and one lady explained to me how she was about to embark on a Maltese lace pattern.

The youngest present, Siobhan Pitt from Speen, was about to start work on a lace dinosaur!

A lace supplier's stall was set up at one end of the hall to sell thread, pins, patterns, bobbins and the many fascinating artefacts that go to make up the tools of the lacemaker's trade. Meanwhile, Winnie and Jacqueline ensured that tea, coffee and ploughman's lunches were in regular supply. If you've not been, it is well worth a visit to Lace Day next October (keep an eye on this newsletter's "What's on?" for the date). Everyone is very friendly and, as you might expect, very happy to talk about their hobby. Long may Lace Day continue.

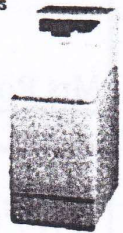
Martin Stockley



Is your water as hard as nails?

60% of British households suffer from these sure signs of hard water problems:

- Blocked shower heads
- Slow running taps
- Scum marks in baths and basins
- Excessive use of household cleaners
- Harsh, hard towels and clothes
- Increased water heating bills
- Scaled-up kettles and appliances



Contact:
MARION BENNET

**Nail all your hard water
problems by installing
an EcoWater system.**

Sterling Softeners
WATER TREATMENT SPECIALISTS

Sterling Softeners,
Cours View House, North Dean,
High Wycombe, Bucks., HP14 4NN
Telephone/Fax (01494) 565232

ECOWATER



Pigotts Music Camp — 75th Year

Many North Deaners and Speenites know that music goes on at Pigotts, North Dean - some have come to listen and have joined in.....but why is there music at Pigotts?

Music making was my father's passion, and when he retired in the early 60's he came to Pigotts to continue his life long hobby and in particular "Music Camps". He started the "Music Camps" when he was 23, moved them to Pigotts when he was 61 and died here when he was 93. He is buried in Speen graveyard. Music Camp continues here and this summer sees our 75th anniversary. As we did 25 years ago we are using the Royal Jubilee Bank Holiday to celebrate our jubilee with a gathering of those who have been to Music Camp over the years. We hope that

the one surviving 1927 Camper will be able to visit; there will be people of all ages and from some Music Camp families of two or three generations.

The Main Music Camp in August, will be the 141st and 142nd - each of 9 days, with some 120 to 130 people making up an orchestra and chorus, living simply and playing and singing a great deal. In addition there are now, from Easter to November, many weekends at Pigotts when groups of friends meet for an intensive couple of days making music. For these weekends, as at main camps, the principles are maintained that no-one is paid, and chores and costs are shared.

Each month in the winter and spring there is a musical evening at 7.48pm to which a local audience is invited. At each, an hour's music by various groups of our friends is followed by wine. Future evenings will be on March 17th, April 21st, and May 19th; this last, a staged performance of Mozart's "The Magic Flute", will be the 50th "7.48pm" (though due to the length of the opera it will actually start at 4.48pm!). Invitations are not difficult to get - ring me (562167).

On May 19th and for the previous week there will be an exhibition in the "Singing Barn" at Pigotts of Paintings, Photographs and Sculptures by "Quintae" a group of advanced fine art students from Chilterns University. Visitors again are welcome I shall know exactly when it is open nearer the time.

On April 24th there will be a day workshop on Ancient Woodland Flora with botanists Angus Idle and John Morris (of the Chiltern Woodland Project). Based at Pigotts, we shall look at - or for - some unusual species in Pigotts Wood. Ring John on 01844 271315.

Local artists may like to know that there will be "Painting Days" at Pigotts May 18th to 21st, June 15th to 18th, and October 3rd to 6th. Informal, with no tuition, but meals etc. provided (about £5 a day). Enthusiasm or skill (or both) qualify! Ring me (a beginner).

Nick Wheeler-Robinson.

SURGICAL CHIROPODIST

HOME VISITS BY APPOINTMENT

Telephone
NAPHILL (01494) 562569

Mrs Rosemary Stone MSSch MBChA

SR Farm Contract Services

HEDGE CUTTING—FENCING
•
GROUND EXCAVATION WORK
•
PADDOCKS AND LAWNS MOWN
•
GENERAL GARDEN MAINTENANCE
•
LOGS SUPPLIED

Tel. Steve Rogers—01494 562041

Beau Vista, North Dean, High Wycombe HP14 4NH

WALKING THE CHILTERN WAY

The Chiltern Society opened the Chiltern Way in 2000 as one of its Millennium projects. It is a circular walk of 200 km (133 m) and traverses some of the most beautiful country in Bucks, Oxon and Beds. The southwest end is at Ewelme.

Members of the Rotary Club of Princes Risborough and their friends, many from Speen, have been walking sections of the Way. The normal arrangement is that everyone meets on a Sunday morning at a village hall near the end point. They travel to the start in the minimum number of cars and then walk back, covering 5-6 miles. The less energetic can join in along the route.

Everyone brings food and drink to share for lunch. Dishes are warmed and tables set while the cars are being retrieved. About 20 take part each time and the food always seems to split well between savouries and sweets.

Walks were limited by the foot and mouth epidemic, but are now taking place about every six weeks and have covered sections using village halls at Bledlow, Stokenchurch and Ewelme (where a prompt exit was made when the local heavy metal band came in to have a rehearsal!). A directory of village halls looks like one outcome.

Contact John Holmes (Tel: 01494 488420) if you are interested in joining in.

RICHARD FERGUSON BUILDERS

All building work
undertaken

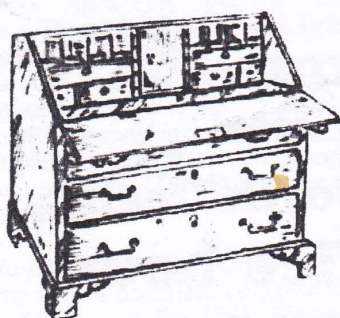


- ♦ New houses
- ♦ Extensions
- ♦ Renovations
- ♦ Fireplaces
- ♦ Fitted Kitchens
- ♦ Bathrooms
- ♦ Patio's
- ♦ Decorating
- ♦ Electrical work

16 Moseley Road
Naphill
High Wycombe
Bucks., HP14 4SQ.



01494 562954



Antique Restoration And French Polishing

Complete Range of
Quality Restoration Work
Undertaken

Ian Gray

Work: 01494 488560

Home: 01494 488023

www.iangrayrestoration.co.uk

BEECHDEAN

Farmhouse Dairy Ice Cream



**Come to the farm and view
our range of delicious
farmhouse products
You will be amazed
at the selection.**

**available from
Beechdean Dairies,
Old House Farm, North Dean.
Open normal office hours
Monday to Friday**

**Tel : 01494 563980
www.beechdean.co.uk**

The Flute playing of Laurie Kennedy (1946—1970) Memorial Double CD



Laurie Kennedy grew up in Speen, Aylesbury. As a child he showed great musical promise and went on to study with William Bennett, Geoffrey Gilbert at the GSMD, and Marcel Moyse in Switzerland, where he was awarded the Marcel Moyse Prize. Laurie was principal flute with the

Halle Orchestra and later, at the age of 21, became principal flute with the Royal Philharmonic Orchestra, with whom he performed several concertos, including the Ibert flute concerto. He also gave a number of solo and chamber BBC radio broadcasts. After this remarkable start to his career his life was tragically cut short in a car crash near Boulogne.

A double CD, solo and orchestral, in memory of Laurie Kennedy is now being released to revive the memory of his playing for those who knew him and to bring the unique brilliance and vitality of his playing to flute players and other audiences since his time.

The solo CD includes 'Brandenburg Concerto no.5', in the original version, followed by the jazz version with the famous 'Jacques Loussier Trio' and also features Laurie, aged 19, playing Chopin's 'Variations on a Theme by Rossini' and Debussy's 'Syrinx', in duet with a local owl!

The orchestral CD includes performances which especially feature flute solos in the orchestral repertoire with Ravel's 'Daphnis and Chloe', the second movement of Beethoven's 'Pastorale Symphony', excerpts from Strauss's 'Till Eulenspiegel' and Bizet's 'Carmen Suite'.

If you wish to order the double CD, please return the order form with a donation, (suggested minimum £10 & £1.50 ~ in the UK). Please make cheques payable to:

'Laurie Kennedy Memorial Scholarship',
40 Woodlands Avenue,
London, N3 2NR.
Tel fax: 0208371 0608.

All proceeds will be donated to 'War Child', an international aid agency committed to providing immediate and lasting aid to children affected by war throughout the world. This charity has recently opened music centres in Bosnia and Ghana.

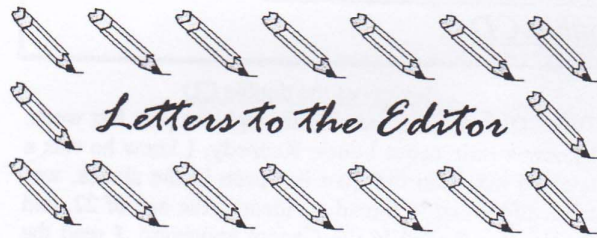
Memorial double CD. Laurie Kennedy plays solo and orchestral works for flute.

Review of the double CD

This CD came unexpectedly through the post last week. I knew a little about Laurie Kennedy. I knew he was a talented musician that live in Speen in the sixties, was tragically killed in a road accident at the age of 22, and that he was buried in the Chapel graveyard. I read the notes with a feeling that I had failed to fully understand or appreciate what a formidable musical talent Speen Village boasted with Laurie Kennedy as a resident. With names like conductor Walter Susskind, the Royal Philharmonic Orchestra, Jacques Loussier and Sir James Galway on this CD I began to realise this was first league music making. The programme is wonderfully varied. There are some well known pieces and some not so well known, and some wonderful surprises.. There are two versions of Bach's Brandenburg Concerto No 5 (in D). The first is the complete concerto that features the Flute, Violin and harpsichord. But the second is a Jacques Loussier Trio performance. The flute and violin lines have been kept and are the back bone of the piece, allowing Louissier to spin his jazz improvisation across the original Bach score. Loussier arranges his trio's part with great cunning. The original writing by Bach of the third movement was in 6/8, but Louissier moves through this with many varying tempos and time signatures. You would think that this may cloud the dynamic of the piece, but not so. The Flute and Violin are so clean and bright that you always know where you are. On CD 2 we find an some contemporary pieces. Ravel's "Daphnis and Chloe" 2me Serie, is quite wonderful. Ravel can be slightly inaccessible at first, but the wonderfully off centre harmonic moves, set against some quite lush, fat harmonies can be disconcerting. Quite often the flute play a key part. Watch out for the flute solo entrance at 7.20. Here you really get Laurie Kennedy's wonderful sound and begin to appreciate what all the fuss is about. Again at 9.10 when the flute is now with the orchestra and has to perform some lightning arpeggios, you cannot help marvel at the execution and finesse.

On Disc 1 track 7 & 8 we are treated to a wonderful surprise. Two pieces that were culled from some practice tapes that Laurie Kennedy had made and were discovered after his death. There is no tape hiss, which indicates that the tape machine was probably of professional standard with a good Dolby, or similar, noise reduction system. The recording levels are good. To hear these properly you should not be afraid to increase your listening volume. If you do, you begin to believe that the flautist is in the room, you can here quite clearly hear the flute actually working, you can hear the breath control, you begin not only to hear the flute, but the person. You slowly begin to share the work, concentration, and talent that is in the room with you. I think the last words go to Sir James Galway. "This collection is a fitting tribute to a young man who had the promise to be one of the world's great flute players". I thank Evelyn Frank for making me aware, and sending me the CD.

By Martin Hart



An Accident Waiting to Happen in North Dean –

It's a while now since I put pen to paper. In the early days of the S & ND News I wrote of the joy of walking through our peaceful village, enjoying the views across the fields to the Beechwoods beyond, the cows in the fields, and all that goes with living in harmony with life. Thankfully not any of this has changed, thanks to having the privilege to live in the Green Belt and AONB, but what has changed is the speed and volume of traffic, passing through the village, we have a 40mph speed limit, but many cars reach speeds of 60mph and above, there are a number of old(ish) people like myself who are not as agile as we used to be, and an increasing number of children, who when at play haven't always got their minds on the dangers of the road. I'm sure some of our readers may be at fault, spare a thought when you drive through the village, at 60mph you have no chance of stopping, at 30mph you just might have, don't be the one causing that accident that we all know is waiting to happen.

Many of us in the village feel that 40mph is still not appropriate and that 30mph would be safer, the Police are not too happy with this because of the difficulty of enforcing it, I see little difference in enforcing 30mph to that of 40mph.

If you feel strongly in support of this, please write to the Bucks County Highways Authority, Easton Street, High Wycombe, (for the attention of Mike Knight), copy your letter to Hughenden Parish Council, The Council Offices, Great Kingshill, and the District Council, Queen Victoria Road, High Wycombe, also enlist the aid of your District Councillor, Cllr Fulford, 01494 866229. If there is support for us in Speen, your District Councillor, Cllr Paul Rogerson, 488315, may like to add his support.

There is also the problem of encroaching hedges onto the roadway, after many approaches the County did make a token cut in the Summer It

appears, if they are cut back too hard it would spoil the hedges, and endanger the environment for the wildlife. Whilst I am a supporter of keeping our natural environment, do we really want the best hedges in the Country, or a pile of flowers marking an accident spot. We need a reasonable compromise, well kept hedges, and free flowing traffic that can pass in safety. If you are concerned about this, add it to your letter, if we don't make our feelings felt, who's to know and nothing gets done.

Individual letters carry more weight than multi signatures, IF YOU REALLY CARE WRITE TODAY

The Old Codger

Editor's note: this letter should have appeared in the previous edition of the Speen & North Dean News but was mislaid en route. Our apologies to The Old Codger.

A big "thank you" to the person whose idea it was to erect a Christmas Tree, lit up, in the village. It was wonderful.

I understand this was the first time Speen has had a Christmas Tree; I hope it won't be the last.

Jo Banks

Editor's note: The idea was in fact my wife Marjorie's. However, support came from the Parish Council, who provided the tree, the Speen Millennium Celebrations fund, which paid for the lights, and of course from the Playing Field Association who erected the tree, installed the lights and organised the refreshments for the "switching on" ceremony.

It was a pity that the WI didn't go round the village Carol Singing this year. Perhaps they thought it would be superfluous after the carol singing at the pavilion? I think there is room for both events. The carol singing at the pavilion is just for fun at the tree lighting ceremony, and can only be heard by those who are there, while the carol singing in other parts of the village mean more people can hear it, AND money is raised for charity.

Name withheld

As well as the Golden Jubilee – two other anniversaries this year:-

LACEY GREEN SINGERS

Lacey Green Singers will be celebrating their 20th Anniversary in May this year. They were founded by a teacher at Lacey Green School, Mr Will McBurney.

They will be having a concert in Lacey Green Church at 7.30 on 23 March 2002 will sing all the Easter music from Handel's Messiah. Tickets are £5 on door or ring: 01844 346071.

Lacey Green Singers have vacancies for all singers and hold rehearsal on Thursdays in Lacey Green School at 8pm.

PRINCES RISBOROUGH MUSIC SOCIETY

Princes Risborough Music Society were founded in 1912 and will be 90 this year. Their next concert will be at High Wycombe Church at 7.30 on 16 March 2002 and they will be singing Dvorak's Te Deum, Lloyd-Webber's Requiem and the Cygnus Orchestra will also be there to play Elgar's Cello Concerto.

The Conductor, Mr Christopher Grant, also conducts Marlow Choral Society and every two years the Music Society do a joint concert with them at the Wycombe Swan Theatre.

The Music Society have vacancies for all singers and rehearsals are held at Princes Risborough School in Merton Road on Tuesdays at 7.30pm.

Jill White









TREATS II

A Tradition of Good Toys!



TREATS II

5-7 Duke Street
Princes Risborough
Bucks. HP27 0AT.
Tel: 01 844 344354 Fax: 01 844 274540









TREATS II, the greatest selection of toys in the area!

Scientific & Educational

MBE FOR SPEEN RESIDENT

Many congratulations are due to Speen's Di Rainbow, who was awarded the MBE in the New Year's Honours List for services to young deaf people in Buckinghamshire.

Di Rainbow has always had a special empathy for the deaf. Both her parents were deaf and so it was natural that years later, as a social worker, she should take particular interest in the well-being of those with this incapacity. However, Di's parents had insisted on lip-reading and it was not until mid-life that she learned to use sign language and came to realise that, as a hearing person with a close insight into the needs of the deaf, she had something special to offer them.

Di was aware of the social isolation of many profoundly deaf children. The overwhelming majority are born of hearing parents, of whom less than 20% have the skills to be able to communicate freely with their children. Furthermore, the special boarding schools where deaf children may mix with one another tend to be dispersed widely. As a result it is difficult for young deaf people to engage in local social activities and make friends. Dissatisfied with the resources allocated to the deaf through the Social Services, Di decided to take the initiative into her own hands and in 1994 she created the High Wycombe based organisation known as Young Deaf Activities.

Working every hour of her spare time (she still held down a full time job), Di threw herself into her fight to improve the lot of local deaf children, battling for resources, planning, organising and at the same time dealing hands-on with the needs of the young people she was determined to help. The results have been a wonderful tribute to her energy and commitment.

Young Deaf Activities is now a registered charity with an ever-growing membership and a wealth of activities for the young deaf of the area. Its Youth Club, where deaf children and their hearing brothers and sisters are encouraged to relax and enjoy themselves, meets every other week at the Round House in Wycombe. There are holiday outings and family days, which have included visits to the Millennium Dome, Thorpe Park, Legoland and the London Eye. There are visits to the Christmas Panto (with signing support), parties and many other social activities. Each Christmas, Young Deaf Activities can be seen signing (and singing) carols outside the big local supermarkets. And on the subject of signed music, the charity entered the Guinness Book of Records for organizing the largest

ever signing choir when the cast of The Wizard of Oz at the Swan Theatre signed "Somewhere, over the rainbow" after a performance of the show.

There is also a more serious aspect to Young Deaf Activities, running alongside the fun elements. The organisation has built up a comprehensive library of children's sign language videos and books. It also provides an important facility called Sign Language Communication Clubs wherein free, basic sign language tuition is given to the hearing members of the family. Everyone is kept in touch through "Newsflash", the charity's own free newspaper, 600 copies of which are distributed 3 times a year.

Di Rainbow must rightly feel proud of her achievements, and we all wish Young Deaf Activities well for the future. However, as is so often the case with charitable activities, funding is a perennial headache. With the many fund-raising efforts that we villagers undertake, it would be nice to think that we could, once in a while, direct some of those funds towards this local charity that one of our own residents has so tirelessly built from nothing.

Martin Stockley

Revival
COMPANY

**The Re-Upholstery
Experts**

Free Home Estimates

Fabrics by the Thousand

Fast and Efficient Service



Telephone: (01844) 278759

The Old Stores, The Green, Great Milton,
Oxford, OX44 7NT

Member: Association of Master Upholsterers

THE OLD PLOW BISTRO & RESTAURANT

A SELECTION OF DISHES FROM THE BISTRO AND RESTAURANT AUTUMN MENUS

STARTERS

French chicken, Bang Bang Thai style peanut and cashew dressing
Gravadlax of Scottish salmon with oriental dressing
Provencale fish and shellfish soup
Goat's cheese with char-grilled Italian style vegetable salad, Balsamic, olive oil dressing
Carpaccio of courgettes, sweet anchovies, olives, Parmesan and rocket salad
Parma ham with fresh figs, Balsamic dressing
1/2 dozen Mediterranean prawns with Marie Rose sauce
Hot salt and pepper squid and prawn salad
Warm salad of fresh Devon scallops with oriental dressing
Smoked salmon and fresh crab
Los Angeles Caesar salad with smoked duck breast
Smoked salmon with capers, mango and lemon mayonnaise

DINNER

Char-grilled breast of French corn-fed chicken with grilled aubergine and a Goanese
curry sauce and prawns
Roasted rump of prime English new season's lamb with home-made apricot, mango
and mint chutney
Grilled Gressingham duck breast with braised sweet and sour red cabbage
Char-grilled escalope of veal with grilled artichoke bottoms and tomato Neapolitan
Pan-fried calves liver and sweet-cured bacon with shallot confit
Char-grilled Aberdeen Angus rib eye steak with cracked peppercorn sauce and Stilton
butter
Seared Devon scallops, sweet cured bacon, Provencale lemon butter sauce
Hot goat's cheese, leek and Stilton tart with lemon butter sauce
Fricassee of fish and shellfish with saffron, butter onions, cream and steamed rice
Mixed grilled fish and shellfish with linguine pasta, green herb sauce, rocket leaves and
Parmesan
Fresh fillet of wild seabass with lemon butter and wild mushroom sauce
PLUS seasonal game dishes such as wild duck, partridge and Scottish venison.

**The Old Plow, Flowers Bottom, Speen is open for lunch and dinner Tuesday to Friday
inclusive, dinner on Saturday and lunch on Sunday. For reservations and details about
party bookings and Christmas functions, telephone 01494 488300.**

THE GARAGE THAT COMES TO YOU

All areas within 35 miles of High Wycombe

VEHICLE TECHNICIANS

AUTOS - MOBILE

ESTABLISHED 1971

**SERVICING
REPAIRS
BRAKES
CLUTCHES
FUEL INJECTION
ELECTRONIC IGNITION**

Most makes serviced, British & Foreign

No Call Out Charges

Call
Bob Wheeler
or
01 494 564090
in North Dean
0836 673441

PERSONAL, COMPETENT AND FRIENDLY SERVICE

I am now based in NORTH DEAN and am probably one of the best equipped MOBILE services in existence. 30 years service to the surrounding area has given me a wealth of knowledge and keeps me abreast of all technological advances. I have up to date diagnostic and tuning equipment to cope with almost all cars and light commercial vehicles. Another benefit is, I COME to YOU, so you don't need to leave home for your servicing or repairs. No other garage is closer to you. If you wish, your car can be serviced or repaired at another Location, e.g.. - at work (if your employer is agreeable).

I offer a Personal, Friendly and Competent service to the highest standards.

Why not call today and book your next service?

Wildlife Watch in Speen and North Dean -

by Peter Symonds

Whilst the seasonal changes in Autumn and Winter are very obvious, some of the changes to our wildlife are more subtle.

Gradually our local bird population is supplemented by birds from Scandinavia. The most notable early arrivals are flocks of redwings and fieldfares. Having stripped hedges of berries they descend on fallen apples in gardens and orchards. Locally the best site to see these birds is the old orchard off Grubbins Lane where flocks of 30 to 40 of these Scandinavian thrushes mix with our own blackbirds and mistle thrushes.

Mixed in with the flocks of chaffinches in our woods are the occasional bramblings. These bramblings will visit certain gardens later in the Winter as the food in the woods is exhausted. George Butler in Hampden Road has reported flocks of 50 in his garden in previous years.

Higher up in the trees other visitors include siskins and redpolls and, occasionally, crossbills. Siskins descend onto peanut feeders in large numbers towards the end of the winter.

Other birds reported in and around Speen over the past few months include buzzard, goshawk and

marsh harrier. Whilst these birds are passing through the district, our local red kites remain very apparent circling over fields and even gardens searching for carrion.

Most mammals keep a low profile over the winter period. Many animals are hibernating but some, like the edible dormouse and the woodmouse, move into sheds, garages and lofts around the village. By contrast, foxes are often more apparent during January and February as they search for mates, territories and food.

Occasionally during January, February and March animals briefly emerge from hibernation looking for food during warm spells. In previous years, hedgehogs have been seen in daylight hours in Abbotswood during warm spells, trying to find food.

One interesting sighting reported to me during the winter period was a roe deer between Speen and Great Hampden. Although muntjac deer are quite common roe deer are not regularly encountered locally.

I would be pleased to learn of any interesting sightings in the area. Tel 01494 488 016

ST JOHN'S CHOIR

Further to my article in Issue 10 of the Speen & North Dean News (Spring 1997), the Parish Church Choir is still lively and thriving with many more children who have just joined. Practices are still on Monday nights at the Church from 7 to 8pm so if any of the Speen Choir members wish to join us, they will be very welcome indeed - same day and time, different place.

Mr Stuart King, our Organist and Choirmaster since 1997, has had to go abroad on business and the Church choir is now run by Mrs Rosemary Mortham (Choir Director). She has many contacts and every Sunday since Stuart's departure, we have had an organist for each of the services. She has also trained the children and with the help of Miss Sue List, Organist of Princes Risborough Church, two of our children, Amy Stothard and Natalie Awdry, have won Bishop's Chorister Awards. They went to an official service at Christ Church Cathedral in Oxford along with choir

members from other Churches in the Diocese for presentation of their ribbons at Evensong in the Cathedral.

For the first time ever, the Church Choir went to the William IV in Speen, carol singing for our sponsored child, Hussein Farhat. Altogether, the choir raised over £222 for his education for the next year. It was lovely to go to the William; at long last it is a proper village pub.

Our Vicar, Revd Richard Caink, will be retiring at the end of the school year some time in the summer. He has worked very hard for the Parish and has brought many more children into the Church. He is wonderful at weddings, very bright, joyful and cheerful.

St John's Church Choir Director is Mrs Rosemary Mortham, telephone no 01844 345863. All new members are welcome, especially men, so that we can sing a greater variety of music.

Jill White

What's on in Speen & North Dean

March

7th	WI – Make the most of your memory	Speen Village Hall
8th	Murder Mystery with supper	Speen Village Hall
11th	Lacey Green Parish Public Meeting	Lacey Green Millennium Hall
16th	Pub Night 7.00pm	North Dean Village hall
19th	WI Hampden Group meeting	Hampden Village Hall
23rd	Men's breakfast: David Merriman	Speen Village Hall

April

4th	WI birthday supper & entertainment	Speen Village Hall
10th	Speen Supporters Group Fashion Show	Wycombe Town Hall
24th	Workshop on ancient woodland flora	Pigotts, North Dean
26th-27th	Supper/concert – Speen Choir & others	Speen Village Hall
29th	North Dean Village Hall AGM	North Dean Village Hall

May

2nd	WI discussion for National AGM	Speen Village Hall
5th	WI family car treasure hunt	
13th-19th	Fine arts exhibition	Pigotts, North Dean
19th	The 50th “7.48” - The Magic Flute	Pigotts, North Dean

June

1st or 2nd (tbc)	Jubilee Village Barbecue	North Dean
3rd	Speen Golden Jubilee Festivities	Speen Playing Field
6th	WI – Fossils, and how to become one (Dr Jill Evers)	Speen Village Hall
22nd	PTA Midsummer Ball	Speen Infants' School

July

13th	Speen Village Fete	Speen Playing Field
------	--------------------	---------------------

August

3rd	North Dean Village Fete – competitions open to all (including non-residents)	North Dean Playing Field
-----	---------------------------------------------------------------------------------	--------------------------

September

15th	Speen Supporters Group go-carting	Oxford Stadium
------	-----------------------------------	----------------

Who's who in Speen & North Dean

Speen & North Dean News editor	Martin Stockley	488101
Speen Baptist Church - minister	Andy Gower	488758
Speen Fête - Chairman	David King	01844 344839
Speen & North Dean Good Neighbours	Suzi Rose	488696
Guides	Pauline Hall	488372
Speen Horticultural Association - secretary	Peter Dawson	488222
Speen Infants' School - head	Mrs Nayna	488321
Speen Infants' School PTA	Amanda Cleaver	488288
Speen Marquee - hirings	John Holmes	488420
Mother & Toddler Club	Tracy Salmon	488697
Speen Neighbourhood Watch	John Radford	488679
Speen Playing Field Association - secretary	Jenny Cowan	488546
Speen Pre-School	Janis Hearn	488440
Speen Residents' Association	Gordon Hall	488331
Riding for the Disabled	Gloria Holmes	488420
Speen Stores	Sandra Clarke	488258
Speen Tennis Court - secretary	Cherry Seekins	488355
Speen Village Hall - bookings and secretary	Catherine Butler	488412
North Dean Village Hall - bookings secretary	Megan Chinn	563074
North Dean Village Hall – chairman	Nick Wheeler-Robinson	562167
Speen WI - secretary	Mary Dawson	488222

Hughenden Parish Council	John Rogers (Chairman)	562041
Lacey Green Parish Council	Don White (Chairman)	488437
	Peter Symonds	488016
Wycombe District Council	Paul Rogerson	488315
Buckinghamshire County Council	Paul Rogerson	488315,

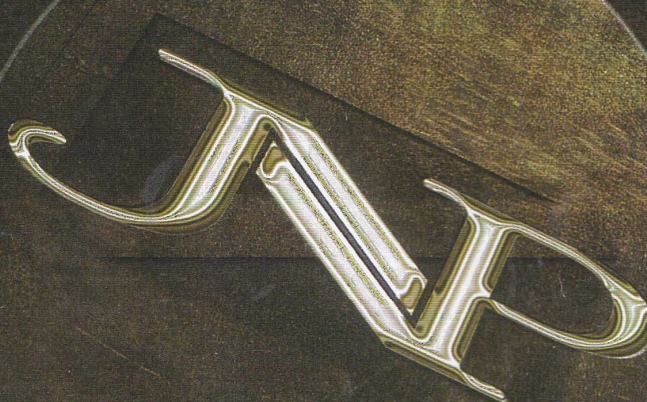
Local Police contact number: 715352

Residential Sales

A uniquely experienced team of professional selling property in High Wycombe, the Chilterns and South Bucks; offering free no obligation market appraisals seven days a week from our High Wycombe, Hazlemere, Prestwood, Princes Risborough and Park Lane, London offices.

Surveyors & Valuers

A qualified and experienced team of professionals providing a full range of surveys for all types of properties.
(01494) 528000



Fine & Country Homes

A bespoke service for properties of distinction benefiting from our tailor-made service and marketing strategy which includes professionally printed brochures, Park Lane, Mayfair and international marketing.

Land & New Homes

Our expert planning department can help you check out the planning potential of any piece of land - profit from your garden
(01494) 528000

Residential Lettings

An independent lettings service available from all our offices offering local and national marketing from our experienced lettings team
(0845) 0601000

Mortgage Advisers

JNP Financial Services are independent mortgage advisers with experienced consultants offering free financial advice from our dedicated
MORTGAGE SHOP (01494) 718080

