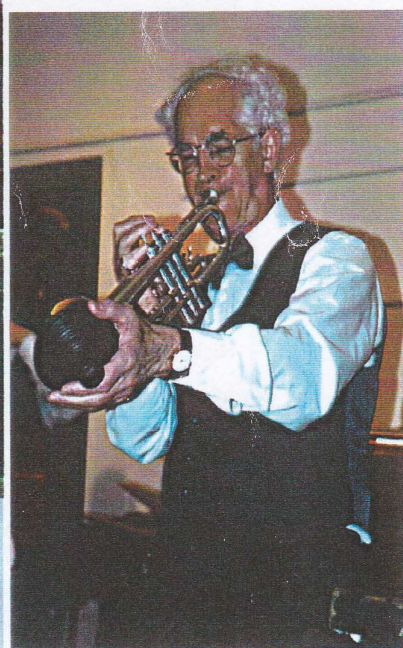


New amenities in Speen & North Dean

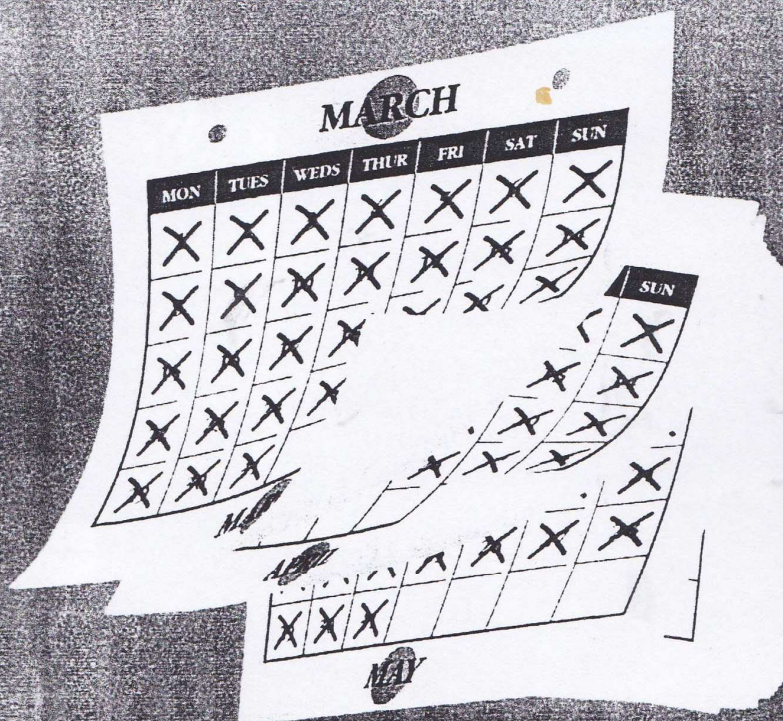


Smiles & Music





**EVERY DAY ONE OF OUR CLIENTS
MOVES HOME IN THE LOCAL AREA!**



**If you are moving, why not join our growing
number of satisfied clients. Call us ANY day
of the week for a free valuation.**

31 Crendon Street
High Wycombe, Bucks. HP13 6LJ.
Tel: (01494) 451010

Hazlemere Cross Roads
Hazlemere, Bucks. HP15 7LN
Tel: (01494) 711777

2 Wycombe Road,
Prestwood, Bucks. HP16 0PW
Tel: (01494) 868600

**Unrivalled colour property presentation
AND colour advertising!**

Letters to the Editor

Dear Editor

Obliged, as we dog owners now are to exercise our animals along roads instead of in the woods, we are disgusted to see so much litter discarded on grassy verges near Speen and sometimes even within the village itself. We find beer cans, plastic bottles, cigarette packets, toffee wrappers, paper handkerchiefs even take away containers.

Although the worst offenders are dumping beside Spring Coppice Lane, Bryants Bottom Road and Hampden Road, if we really want to protect our country side we can at least set a good example to our youngsters and encourage them to be aware of such antisocial behaviour.

Try as we may, there is far too much rubbish for us to bring back home in the dog emergency bags which we always carry in our pockets.

Leonora Cotterall and Margaret Jones. Speen

All being well
2nd June 2001
Judy & Arthur Lipscombe
celebrate their
60th Wedding Anniversary.

Wycombe District Council
Garden Bonfires and
the alternatives

There are many alternatives to bonfires for disposing of garden waste, but for those who prefer bonfires it is im-

portant that they do not become a nuisance to their neighbours. The following guidelines are designed to help reduce the likelihood of nuisance.

Compost as much garden waste as possible

Only burn dry materials. A quick, hot fire will produce the minimum of smoke and bonfires should not last for more than 30 minutes.

Remember to consult your neighbour before burning and burn as far away as possible from dwellings, washing lines etc.

The smell and choking smoke from a bonfire is enough to upset people, but bonfires also release a range of hydro-carbon compounds into the atmosphere. If these compounds are present in a sufficient quantity the smoke could constitute a health hazard. For example, bonfire smoke contains 70 parts per million of the cancer-causing compound benzpyrene. Cigarette smoke in comparison holds only 0.2 parts per million.

bonfires should not be lit more frequently than once every fourteen days.

No fire should be left unattended. Never leave a fire to smoulder, but douse it with soil or water.

Never add household rubbish to a garden bonfire.

You should be aware of the basic law about bonfires. Under Sections 79 and 80 of the Environmental Protection Act

1990, a smoky bonfire could be actionable. If your Local District Council is satisfied that a nuisance has occurred and even though it has temporarily ceased, it is likely to recur, the Council may serve an Abatement Notice.

Rachel & Charlie Radburn

Have moved
their new address is
38 Lyttelton Road
Droitwich Spa
Worcestershire
WR9 7AB
(01905) 773385

For those who may not know Rachel started this magazine and still receives copies. Charlie was the previous Baptist Pastor in Speen

CHARITY NEWS

There have been a number of door-to-door collections including a national Asthma Campaign, Red Cross, Children's Society, Save the Children and Christian Aid. As regards the latter two, I am proud to announce that Speen, Lacey Green and North Dean inhabitants raised £485.00 which is the most I have managed since acting as local co-ordinator. Tracy Salmon took over the organisation of Christian Aid for the first time this year and so far has collected £600. Thank you to all the collectors and all who gave so generously. I do not have information on how much was collected for other causes but please let me know how much you collected.

Suzi Rose

WINE TASTING AT NORTH DEAN

No one needs reminding that we have had some wet weather of late, and the evening of Friday March 16th was no exception. It was coming down like stair rods as we dashed from house to car, and my husband declared we must be completely mad turning out on such a night for a wine tasting at the Village Hall. In any event, he predicted, we would be the only ones there and the event would be cancelled!

Well, he was wrong on all counts. The car park was full to overflowing and we took almost the last available seats just past 8pm, and everyone was ready to go!

The event was described as a 'tutored' wine tasting, and our tutor was Helen Verdcourt. She was introduced to us by Robert Asher, a friend of Nick Wheeler Robinson. He described himself as a collector of fine wines and one of his sources over the past twelve years has been Helen. He has a high regard for the wines she offers. Helen attends numerous wine tastings in London and abroad and buys the wines she likes. She runs her business from her home in Maidenhead

We tasted ten wines in all, starting with a non vintage champagne, then we moved on to the white wines from Chile, Italy, France and South Africa. My personal choice was a Chilean Sauvignon blanc at £5.50, the cheapest of the whites. It was crisp and light with a wonderful bouquet of elderflower and gooseberry.

The red wines we tried were a Chilean Cordillera made from grapes from old vines, and Australian Cabernet Sauvignon, best for keeping, a Chateaufort du Pape and a lovely Spanish Diego Almagro Reserve, the latter again being my favourite.

Helen took us slowly through the selection, serving a generous tasting of each wine. We discussed the bouquet, the types of grapes used, the growing conditions favoured by the different varieties of vine and the production. Much of the terminology of viniculture was explained and, most interestingly, the foods which are best complemented by the wines.

During the tasting we were served only very fresh but unbuttered bread in order not to distract the palate from the wine. Everyone agreed they had learnt so much more about wine and its production.

As we progressed through the tasting the noise level heightened in the Hall. As the wine flowed the tongues loosened and not only were we drinking delicious wines but also enjoying a thoroughly sociable evening.

At the end of the tasting Nick Wheeler Robinson circulated a huge tray of more fresh bread and wonderful cheeses, and the party continued.

This was a first time event for North Dean and many of those attending requested that it be repeated.

By Lillian Cash

PLANNING APPLICATIONS ISSUED BY LACEY GREEN PARISH COUNCIL

00/07352	Magpies, Grubbins Lane Emergency Escape Door	No Objection
00/0783	7 Abbotswood New Entrance	No objection
01/05299	5 Abbotswood Demolish Garage and erect side extension and Conservatory	No objection
01/05331	Woodbine Cottage, Studridge Lane Timber Shed	No objection
01/05336	Heath Cottage, Grubbins Lane Erection of new house in garden	
Objection on grounds that similar application had been refused on appeal		
01/05290	Renrag, Flowers Bottom Lane Alterations to first floor kitchen and hall extension and Conservatory	No objection

Speen Festival

7th to 15th September

2001

As you will see on this page of the Speen and North Dean News, the inaugural Speen Festival will take place from 7th to 15th September. Its aims are to provide a forum for local talent across a wide range of events; to involve as many villagers as possible - not only in participating but also helping in any other way; and to entertain the village.

If, successful, it is hoped that this may become a regular event, say every two years, and perhaps broaden its horizons to attract participants and audiences from a wider area.

The Festival is neither expected nor intended to raise money - it is simply something worthwhile for the village to enjoy in its own right. While it is hoped that some grant support will be forthcoming, it will rely principally on the support of individual villagers - particularly by way of ticket sales - so do please make a note of the dates and make sure that you come along.

Tickets for the events that require them will be available from about the end of June, when you will receive a booking form with further details of the individual events. The venues are the marquee and Speen Village Hall. Space is therefore limited and tickets will be sold on a 'first come, first serve' basis, so book early - remember the Pageant played to 800 people and there were still plenty who were too late to get tickets!

By Martin Stockley

Speen Festival

7th to 15th September

2001

DATES FOR YOUR DIARY

SEPTEMBER

Friday 7th and Saturday 8th

Alice

A musical production by Martin Stockley

Saturday 8th and Sunday 9th

Art & Photographic Exhibition

Local artists & photographers exhibit their work.

Sunday 9th

Speen Antiques Day

Experts available to discuss Granny's heirloom

Wednesday 12th

Jazz in the Marquee

Martin Hart presents "The George Gershwin Story"

Friday 14th

Natural History of Speen

Peter Symonds' exquisite presentation

Saturday 15th

African Hand Drumming Workshop

Creative fun for kids of all ages

Saturday 15th

Gala Music Concert

The musical finale of the Festival

For further details visit www.SpeenBucks.org

Speen Stores News: 'Good-bye and Hello!' Thursday 17th May

Just three short years ago the Summer Edition of Speen and North Dean News was reporting the opening of the new Speen Stores and the arrival of David Pirolì and Sharon Ridgewell. What an impact they have had!

And now, as they hand on the baton to Peter and Sandra Clarke, over 40 folk from the community, as well as Jane Fleming and Rosemary Pickworth from the Buckinghamshire Housing Association, gathered in Speen Village Hall to say 'thank you' to David and Sharon and 'welcome' to Peter and Sandra.

Tables were laden with ample refreshments provided by Peter and Sandra; members of the Speen Shop Charities Committee were on hand to answer questions about the £6,165 given to local organisations over the last three years; reporter Pat Bramley from Bucks Free Press was there for the story and Jane and her team had produced the history of Speen Stores in the form of a humorous fairy story (copies are still available from Bucks Housing).

David and Sharon have made a very significant contribution to the life of the community and as a 'thank you' to them for seeing the opportunity and taking the risk, it was a pleasure to present them with a framed copy of the beautiful Speen Millennium map (created by Peter Symonds). The warm applause they received shows that the community have taken them to their heart and we all hope that the family will continue to put down their roots and enjoy life here among us.

Peter and Sandra already have very long roots in the community and so it seemed a little strange for me - as a newcomer by comparison - to welcome them as the new team at the 'useful little shop'. Welcome them we did, with a beautiful bouquet for Sandra and with much goodwill all those present applauded them and wished them success as they take over the reins at Speen Stores.

Andy Gower (wearing hat of Chairman of the Speen Shop Charities Committee).

'RISBORO' OSTEOPATHS

and natural health centre

Tel: 01844 - 275055 for appointments

**Incorporating: ACUPUNCTURE and HOMEOPATHY
FREE assessment or advice**

Conditions we treat include...

Back ache

Sciatica

Headaches

Tennis elbow

Painful knees

Jaw pain

Sinus problems

Menstrual disorders

Stress and nervous tension

Shoulder problems

Sports injuries

Stiff necks

Sore feet

Stiff joints

Trapped nerves

Irritable bowel

Arthritic pain

**Also available: Cranial Osteopathy for Babies, Children and Adults
Homeopathy for adults and children**

26 Wycombe Road, Princes Risborough, Bucks

News from Speen Baptist Church

Andy writes:

So much has happened this Spring it is hard to know where to start. We have celebrated two baptisms already and are looking forward to some more over the coming months, as folk who have come to faith in Jesus mark this publicly.



By the time that you read this we will have nearly completed another 'Time Out for Parents' parenting course. About 20 folk from the community and farther afield have booked onto this course of six workshop sessions, designed to help us brush up on our parenting skills.



If you missed the publicity this time around and would like to do the next course, please give me a ring.

Men's 'Breakfast with Friends and ...

Sir John Houghton' 24th March

Due to the Foot&Mouth outbreak we delayed Dr Rodney Holder's visit but were able to catch Sir John Houghton on his way home from Geneva where he had been co-chair at a meeting of the UN Intergovernmental Panel on Climate Change.

As a former head of the Met Office he is an expert in his field and spent half of his talk explaining the scientific basis for global warming and likely scenarios which we may have to face in the future. This was a most timely and educational visit, particularly in view of President Bush's statements the following week about not endorsing the Kyoto Agreement.

Sir John went on to explain why he had no difficulty in believing in the existence of a God who was personal - not just some sort of impersonal force - and that the death and resurrection of Jesus Christ were real events. He used the Nineteenth Century story 'Flatlanders', in which a two dimensional world encounters a three dimensional being, to help us glimpse something of the mind-stretching implications of God's existence.

We were very fortunate to receive a visit from such an eminent and busy scientist, and he has graciously agreed to put speaking at a Ladies' Breakfast on his agenda for when a suitable time arises.

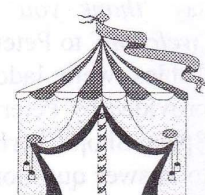
Half Day of Prayer Saturday 24th March

Sir John's visit coincided with a new venture for your local church - namely a special half-day of prayer for the nation. Between Noon and Midnight about 40 different people came to pray - for as long

or short as they felt able. It was a remarkable day and many testified to a sense of God's presence in the building. We are going to hold another half day of prayer on Saturday 30th June.

Easter Celebrations included a special end of term service for **Speen Pre-School Playgroup** on **April 5th** which was well attended and the parents really got involved in the action songs much to everyone's amusement. **Sunday 22nd April** saw the **Retired & Senior Citizens Easter Tea and Top Ten Songs of Praise** with 'The Old Rugged Cross' coming a close second to the perennial favourite 'All things bright and beautiful'.

Looking forward it will soon be fete time again and like last year we will be providing a stall of **Fair Trade products** at both **Speen and North Dean fetes**. So if you would like to know more about how we can use our power as consumers to benefit 'third world' producers or are already in the know and want to top up on Fairly Traded products do drop by the stall.



Happening after the Summer:

14th Sept - 'The Human Genome Project and our future' an evening of discussion with **Dr Caroline Berry & Prof Sam Berry**.

15th Sept - Men's Breakfast: **Prof Sam Berry**.

5th Oct - **Bryn Haworth** in concert.

Summary of Weekly Church Activities

- Sundays:** **10:30 am** Worship for all ages
incl. Creche, Sunday School for 3's-12's and Teens discussion group.
12:00 Fair Trade Stall in church hall (2nd Sunday in month).
6:00 pm Worship Group.
- Mons:** **9:00 am** Meeting for Prayer - at a home in the community
- Tues:** **9:00 am** Meeting for Prayer - at a home in the community.
- Weds:** **10:00-11:30am** "Time Out"
10:00-11:30am Daytime Home Group - Chinysnook, North Dean
8:00-9:30pm Evening Home Group - Studridge, Studridge La.
- Thurs:** **8:00-9:30pm** Evening Home Group - 172 Parkwood Walters Ash

SPEEN SUPPORTERS GROUP

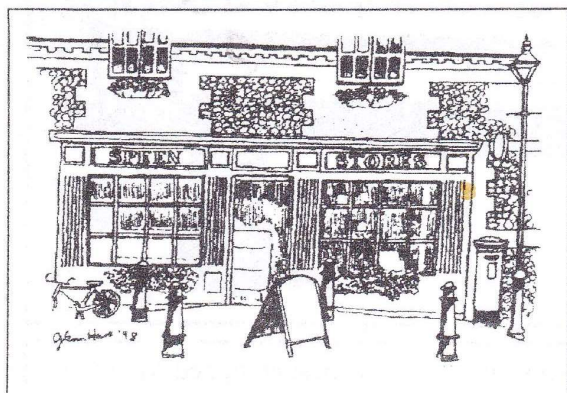
An idea finally came to fruition in the King William on May 17th when a small group of us discussed how to support our local hospice movement. There has been a number of people in the village whose lives have been changed by cancer, either as a patient, or friend or relative of a patient. As many of you will remember, last year's fete profits were shared between Wycombe's Paediatric Unit and the South Bucks Day Hospice. It became apparent to me as I worked alongside the fund-raising team at the Hospice, that awareness about the hospice movement is limited, and as a consequence funds are very difficult to raise.

A number of villages in Buckinghamshire form Supporters Groups for various charities and we thought Speen could set up its own group for a variety of events. It was decided to support all the local hospice charities within a 30 miles radius and we

shall write a more detailed article about all these individual groups in a later issue. However, in the meantime we have booked 4 events for your diary! On September 27th, Sue Taylor will hold a coffee morning with a raffle and bring and buy sale at Kasoma, Laurel Close. Towards the end of the year, or at the beginning of next year, we want to hold a theatre supper evening in the marquee. There will be a village lunch at the King William, sometime in early Spring and we will end the year, next May, with a massive Ladies' Day exhibition of health, beauty and fashion, also to be held in the marquee. We are looking for a keen treasurer to help with the finances. If you would like to join us please contact me, Suzi Rose, on 488 696 and if you have any good ideas to add to ours please let us know.

By Suzi Rose

Speen Stores



Sandra & Peter would like to thank everyone for their support since taking over Speen Stores, As well as continuing with the delicatessen counter we have introduced fresh fruit & vegetables.

Bread, cakes and croissants are baked on the premises 7 days a week.

We are also able to provide a buffet range for that Special occasion

Please ask for details

Shop Opening Times

Mon - Fri	6.45 am - 7 pm
Sat -	8 am - 5 pm
Sun -	9 am - 1 pm

Post Office opening times are

Tues & Thurs	9 am - 5.30 pm
Sat	9 am - 2 pm.

We look forward to seeing you.

THE GARAGE THAT COMES TO YOU

All areas within 35 miles of High Wycombe

VEHICLE TECHNICIANS

AUTOS - MOBILE

ESTABLISHED 1971

**SERVICING
REPAIRS
BRAKES
CLUTCHES
FUEL INJECTION
ELECTRONIC IGNITION**

Most makes serviced, British & Foreign

**No
Call Out
Charges**

Call
Bob Wheeler
01 494 564090
0836 673441

PERSONAL, COMPETENT AND FRIENDLY SERVICE

I am now based in NORTH DEAN and am probably one of the best equipped MOBILE services in existence. 30 years service to the surrounding area has given me a wealth of knowledge and keeps me abreast of all technological advances. I have up to date diagnostic and tuning equipment to cope with almost all cars and light commercial vehicles. Another benefit is, I COME to YOU, so you don't need to leave home for your servicing or repairs. No other garage is closer to you. If you wish, your car can be serviced or repaired at another Location, e.g., - at work (if your employer is agreeable).

I offer a Personal, Friendly and Competent service to the highest standards.

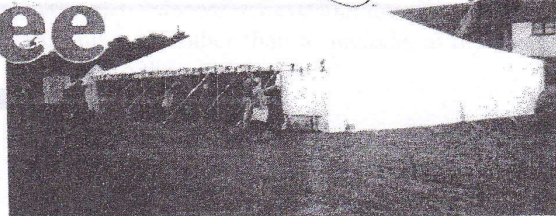
Why not call today and book your next service?



Marquee Hire



SPEEN MILLENNIUM
MARQUEE



Wedding Parties Fetes Discos Open Air Dances Barbeques

The village of Speen has bought a large marquee, primarily for use by village organisations, which is available for general hire. Any income raised will be used to support village events and charities.

The Speen Millennium Marquee is an attractive, modern, traditional marquee made of the latest fire retardant fabric. The fabric is white and therefore light and airy inside. A lining is usually not necessary. The walls are removable to suit all weather conditions. Internal background lighting is available. Tables, chairs and other fittings appropriate to an event are not supplied with the Marquee.

Specifications:

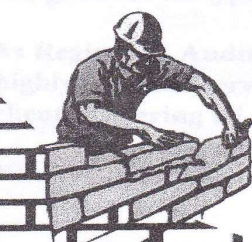
The Marquee is 60 feet long by 40 feet wide, with an eaves height of 8 feet. The Marquee can be reduced in size to 40 feet by 40 feet.

Contact Information:

For further information, pricing and availability contact John Holmes:

Telephone: 01494 488420 Email: jholmes@nildram.co.uk

**Mark
Wengler**
Project
Management



**Mark
Wengler
Project
Management**

Design Service
Extensions & New Build
Specialist Refurbishment

Wayside Cottage
Hampden Road
Speen
Princes Risborough
Bucks. HP27 0RU.

Telephone : 01 494 488025



Hairstyling for all the family

plus

Beauty treatments including

**Manicures, Pedicures, Facials, Waxing, Make up, Eyelash/Brow Tinting/Shaping,
Nail Extensions, Nailart, Self Tanning, Swedish/Slimmers/Aroma Massages,
Indian Head Massage, Body Elixir, Renewing Body Scrub**

Hair and beauty combination packages available

Friendly advice given anytime

Situated above Speen Stores, Speen

Telephone 01494 488899

Wycombe District Council

New Political Arrangements

The new political management structure (leader and cabinet) is now in place. I have been selected for the Planning and Transport Portfolio giving me greater responsibility in the Council policy making process.

However, for every plus there is always a minus and an example can be found in the way planning applications are now to be determined. The new system has meant that a smaller Development Control Committee has replaced the Applications Panel. This reduction in size, 32 members reduced to 16, means that all Wards are no longer represented by the local member and as a consequence I am no longer part of the decision making Committee. I will however be able to comment on applications and make representations to the new Committee, but will have no opportunity to vote.

Electoral Boundary Review

The Local Government Commission have recently issued their draft recommendations for the electoral wards within the District. I have been advised that modifications to 11 wards are proposed mainly in the Wycombe town area. These changes are currently being plotted onto maps so that the extent of

the change may be readily identified. From what I have seen, I do not believe that the changes will affect this ward other than to include, at my request, Speen into the ward name.

School Travel

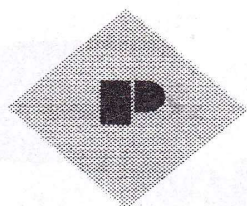
Efforts have continued to find ways to relieve the congestion and improve safety on Main Road, Lacey Green at the beginning and end of the school day. I am pleased to report that good progress has been made by the working group and it is hoped that a School Travel Plan that includes additional parking measures, may be submitted by the School to the County Council by the end of the Summer Term.

Ward Surgeries

I would like to hear from any one who feels it would improve access to the Council if I were to hold monthly surgeries. If there is a demand then I will hold these as a trial starting in July with review in November. In the meantime if you have any concerns regarding the services provided by WDC then please give me a call and I will endeavour to help.

Paul Rogerson

Member for Lacey Green and the Hampdens



PARTRIDGE & CO.

Chartered Certified Accountants

**The Gables, Market Square, Princes Risborough,
Buckinghamshire, HP27 0AN**

Tel: 01844- 343900; Fax 01844-343903

E-mail: accounts@partridgeandco.i-way.co.uk

Are you fed up dealing with Inland Revenue Self-Assessment Returns?

Why not speak to Richard Partridge and let him provide a Full Tax Return Service for you. We have the market leading professional Tax Return software designed for all types of personal and company tax returns.

As Registered Auditors and Business Advisors, we specialise in providing a highly personal service to owner-managed companies, trades and personal tax clients, covering all aspects of business accounting and taxation.

NB: We have now moved to offices in the Market Square Princes Risborough.

LIFE IN THE COUNTRY ISN'T A BED OF ROSES

Buckinghamshire Rural Stress Support Group Update

As if the situation in rural areas wasn't bad enough at the time of our last S&ND News we have had to bear this new outbreak of foot and mouth disease. I know that initially our hearts must go out to farmers and others directly connected with the farming profession, because they are the ones in the front line of this debacle.

The Rural Support Group, at its launch in March 1999, recognised that the whole of a rural community, not just agriculture and its allied professions, were directly affected by everything that goes on. That's why we chose to direct our service to the whole community and not just to farmers. We are greatly saddened by the increase in suicides in country areas, particularly of farmers and family members who can often see no way out of their dilemmas.

As one who has been involved in the conception and development of this support group I know that there is a lot of help around. As a Samaritan Volunteer of fifteen years I am well aware how continuous mental anguish affects people of all ages. I would stress, at this point that you do not have to be in imminent danger of taking your own life to contact any of the support group members, **we** would prefer people to contact us **before** then, to help in whatever way is necessary at that time. It may be practical, financial or emotional help that's needed but it is there. I would also ask that if you do feel that life is no longer worth living, please tell someone. All contact with the support group members or any other organisation will be in the strictest confidence. Maybe there is no solution to your situation, but just the small step of sharing can be the first step in finding a way of coming to terms with your dilemma. You will not be judged or told you to pull yourself together nor told 'it will be better tomorrow' when it probably won't. There still

seems to be a stigma about letting others know you're not coping too well, so we all 'lie' about our situation from time to time and pride takes a large knock at times like this, so we won't take it away, we'll try to restore it. Please, if you're in desperate straits, I challenge you to give us a try. We care and we're there!

Publicity so far : 10.000 A4 posters, 20.000 credit card sized info cards, 30.000 beer mats (yes beer mats) and more being asked for. I will be organising some around us next week.

The Samaritans : 08457 90 90 90 National No. (local call rate) **24 Hours EVERY day**

Rural Stress Information Network : 01203 412916 Office Hours Only

Citizens Advice Bureaux : See phone book for nearest office

Royal Agricultural Benevolent Society : 01865 727 888, (Fax) 01865 202 025

Bob Wheeler, North Dean, on behalf of the Rural Stress Group



dell

brothers

**Builders, Developers, Plumbers
and Decorators**

EST.1948

LACEY GREEN, BUCKS.

Tel: 01844 344342/346688

D.J.Coles

Property Maintenance and Improvement

- Painting & Decorating
- Fitted Kitchens & Bedrooms
- Carpentry
- Loft Insulations & Boarding
- Fence & Shed Erections
- Gutter Clearing & Replacement
- Garden Maintenance



No Job Too Small



Tel: 01494 816282

Mob: 07747783015

Details of Planning Applications

– January – May 2001

MSR/00/07872/LBC

Installation of free standing communications antennae for national Trust use at Hughenden Manor, Valley Road, Hughenden Valley

The Parish Council has no objection to this application providing it is not obtrusive to the surrounding area.

CDP/01/05247/FUL

Erection of two storey rear and side extension at Longhope, Speen Road, North Dean

the Parish Council objects to this application as it appears to contravene the 50% rule in Green Belt.

CDP/01/05378/FUL

Erection of two storey rear extension and front entrance lobby at 6 North Dean Cottages, Speen Road, North Dean – no objections provided there is no intrusion on neighbours and does not exceed the 50% rule.

CDP/015305/FUL

Erection of garden shed in rear garden at 4 north Dean Cottages, Speen Road, North Dean

CDP/01/05493/FUL

Erection of two storey rear extension at 5 North Dean Cottages, Speen Road, North Dean – no objection provided no breach of the 50% rule and no intrusion on neighbours.



COLES & BLACKWELL

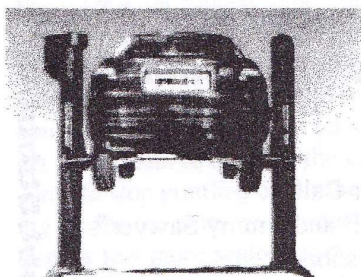
ACCIDENT REPAIR & SERVICING SPECIALISTS

Walters Ash, High Wycombe, Bucks HP14 4UX

Opposite the Bradenham Hill Top Junction



Mechanical



Your local brake specialists

Bodywork



- ❖ All makes of cars serviced
- ❖ Please –phone for details
- ❖ Breakdown & Mechanical Repairs
- ❖ Crypton tuning and diagnostics
- ❖ Tyres all makes, low prices
- ❖ MOT testing & free re-test
- ❖ Brakes & Clutches
- ❖ Exhausts & Batteries

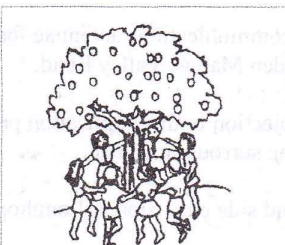
FREE ESTIMATES

01494 563102

Established 1959

Monday to Friday 8.00 - 5.30
Saturday 8.30 - 12.30

Insurance & private accident
Repairs—free loan cars
Approved by all leading
Insurance companies
Chassis repairs on aligning jig
Windscreens
High gloss paintwork in our low
bake oven
Welding



Speen School PTA

Captain Hook's Treasure found in Speen

For those of you who caught sight of Captain Hook wandering the lanes of Speen on Sunday May 20th, or even saw 3 Captain Hooks in quick succession, let me assure you that all is well again in our village.

On that afternoon three intrepid parents dressed as Captain Hook led over 60 children in fancy dress on an exhilarating hunt for the lost treasure of Speen. Dressed as pirates, Tinkerbells, a skeleton, and even a Woody from Toy Story, the children were guided by their own personal Captain Hook to a series of clues that ultimately led to a secret location in Speen School grounds. There, a chest locked by 3 separate padlocks was opened to reveal a hoard of chocolate coins. The excitement was palpable as the lost treasure of Speen saw the light of day after hundreds of years of darkness.

My Thanks to Arvid Halvorsen, Nick Newman, and Stewart Hulley, who made the afternoon come alive with their Hook outfits, pirate songs, and sense of adventure. All three are now taking panto bookings and threaten to upstage Leslie Grantham at the Wycombe Swan this Christmas.

In March the PTA held the Auction of Promises which raised over £5,000 for Speen School. I would like to thank everyone who helped make the event such a success' to those who pledged an item for auction, and to those who came along on the night and bid so generously. A special mention should also go to Phillipa Lane and her hard working team behind the scenes for organising the evening and to Dave Evans who managed to auction 140 lots in just 2½ hours !!

Summer Ball

And finally, don't miss the Speen Summer Ball !!

June 30th, featuring the popular local band, THE WEDGE and Jimmy Sawyer's Disco. Tickets available from the PTA soon.

Any enquiries, please contact Louise Wilson on 563 750.

The posters are up and as you will have noticed the theme is *Hollywood Nights*. Tickets are selling very fast, but some are still available from Louise Wilson, Cherry Seekins or Julie Blundell. So book your baby-sitter and look out your Hollywood glamour gear now.

David Vale
Chairman PTA
488 622

KING WILLIAM IV

16:45 Friday 23rd February 2001 seems an eternity ago now, we waved the outgoing landlord off and returned indoors to survey what we had bought. At last we could closely inspect each room and as we did so reality hit home. The press had told the world we were opening the following Friday, no way Jose!

OK we'll make it Saturday! Sleeves rolled up, pinch the decorators from the house round the corner, rip the old kitchens out and refurbish in stainless. Install new refrigeration units, oops they won't go through the door. Right said Fred (actually Roger!) that there door is going to have to go, had a cup of tea, fridges installed. Cellar re-floored, beer tapped and spilled, burnt rubber round the cash & carry.

18:30 Saturday March 2nd, first pint served.

21:30 Saturday 2nd March onto the 264th pint, wall to wall people, more questions than answers, sweat running off brow, relief crew on, try to circulate and get as far as the fireplace!. Good thing is, if drunk no room to fall over. Sunday morning that reality feeling returns. Forgot to book cleaner, must be open for 12:00 noon, head hurts, no sympathy, make it with a minute to spare.

Précis of first week complete. Must be mad.

Friday 25th May and things are not so rushed, how has the first couple of months gone? Well in truth there have been some highs and some lows and as was said in the beginning it was always going to take time and patience from all concerned while we found the right combination. What were we trying to achieve and have we got there, we think so.

Our goal was to give the village its pub back whilst at the same time offer a food service of high quality and choice. Now we are not that naive to think that we can please all of the people all of the time but here is why we think we are close:

From June the small bar will actually have a bar and will once again become the snug. For those who just want a drink, an ideal place to meet a friend or to pop in on the way home. Additionally we will be serving light suppers in the snug, such things as fish & chips, steak sandwiches, ploughman's and the like. For those that must you can have the dreaded weed! Why not try a game of cribbage or dominoes but beware the landlord is an ex league player!!

The opposite (existing) bar will be no smoking and the main theme will be the food operating for lunch & dinner Tuesday through Saturday and Sunday lunch, the lighter snack type menu being available on Mondays. Our lunch menu now includes the less formal; ploughman's, honey roasted ham egg & chips, Caesar salad, smoked salmon & scrambled eggs as well as the choice of a three course luncheon. Our full dinner menu is available Tuesdays through Saturdays.

We offer a set Sunday lunch of two or three courses always including a Roast and lighter dishes will be available in the snug for those who prefer a snack.

So there it is! Can't be bothered cooking, drop in and have a snack in the snug. Fancy letting the belt out a notch and have a treat, book for dinner. Meeting that friend for a chat or need to get on the right side of the bank manager, then join us for lunch. Need to relax, quench the thirst then join us for a drink and don't forget the garden. Remember the village has its pub back, use it!!

Time to stop prattling on but before I go a couple of thank-yous. To the villages latest forty year old for using us for the party and to our neighbours for the lack of complaints about the band! (Rumour has it that quite a few more senior residents dusted off the beetle crushers and were spotted jiggling around the back garden!!). To the happy couple round the corner for choosing the pub to celebrate fifty years of marriage. To the residents of this lovely village (and of course North Dean) who have used us and finally to all our staff for all their efforts in getting us up and running.

Till the next time and hope to see you soon

The King Williers

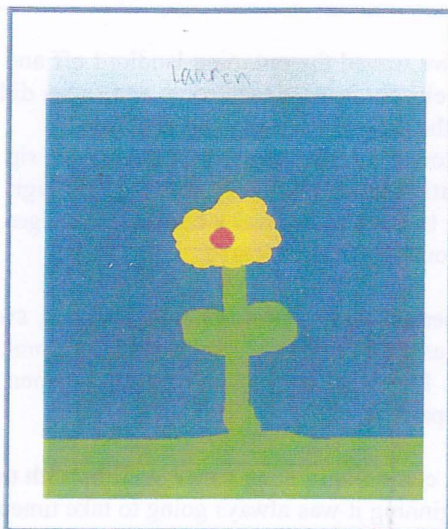
Opening Times Bar - Lunch 12:00 - 15:00 Monday - Sunday

Evening 18:00 - 23:00 Monday - Saturday

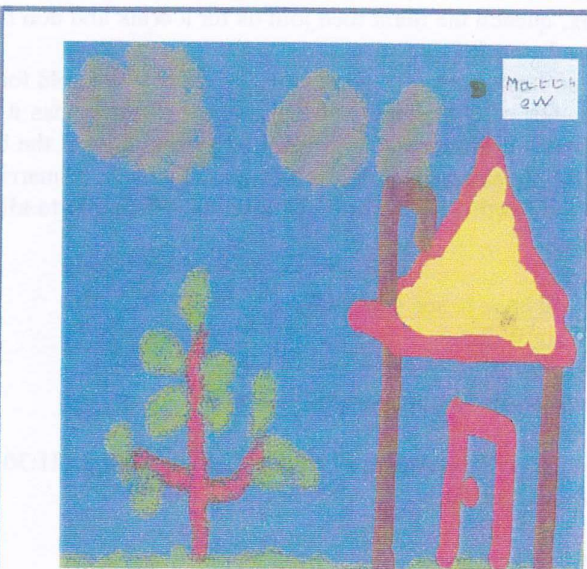
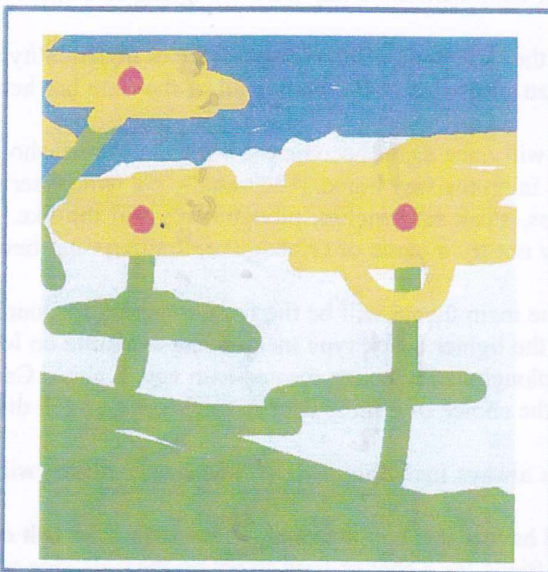
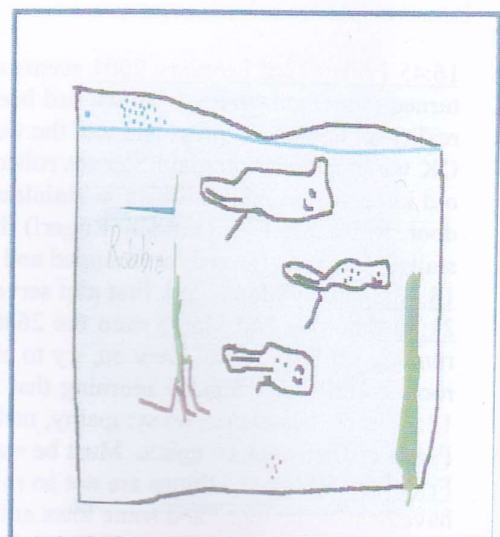
Food served between 12:00 & 14:00 lunchtime (14:30 on Sundays) and 19:00 to 21:00 Evenings (21:30 Friday & Saturdays).

Closed Sunday Evenings - No food service Bank holiday Monday Evenings

Reservations 01494 488329



**SPEEN
School
Computer
Pictures**





Bill Groves (amateur)
learning how it should be
done
from Clive



Speen Farm and Rosebank Cottage
Two listed buildings in Speen



It's a serious business this string plucking
even when the instrument is
"Hazardous waste"



THE OLD PLOW BISTRO AND RESTAURANT

A selection of dishes from the current bistro and restaurant menus:-

STARTERS

Fresh Devon crab, giant prawns, smoked salmon, fresh mussels and lemon and chive mayonnaise.
Fish and shellfish soup with fresh basil
Moules Mariniere
Fresh scallops salad with oriental dressing
Parma ham and fresh figs
Los Angeles Caesar salad with smoked duck breast

MAINS

Grilled breast of corn-fed chicken, venison sausage, cranberry and orange relish
Pan-fried calf's liver and sweet-cured bacon with shallot confit.
½ fresh lobster Thermidor
Venison sausages with mustard sauce and neeps and tatties
Fresh fillet seabass with lemon butter and wild mushroom sauce
Linguine pasta with prawns, saffron and fresh crab
Char-grilled Aberdeen Angus rib eye steak with cracked peppercorn. sauce

DESSERTS

Hot syrup sponge with raspberries, strawberries and vanilla sauce
Sticky toffee ice-cream with poached William pear and chocolate sauce
Mango and raspberry sorbets with fresh fruit coulis
Farmhouse cheese platter with grapes, walnuts, celery and a glass of port
Hot French apple tart with vanilla ice-cream

All dishes are subject to availability

For Valentine's Day, Mother's Day and details of parties and conference facilities, please telephone 01494 488300 and ask for Mrs Cowan.

The Old Plow Bistro and Restaurant, Flowers Bottom Lane, Speen



Speen W.I.



Thursday 7th June

Tai Chi and Me.

Mrs. Sylvia Eastgate

Comp: Something from

The Far East

Bloom of the Month.

Thursday 5th July

Glass Painting.

Mrs. J. Dunsterville.

Comp: Favourite Glass

Ornament.

Bloom of the Month.

Thursday 2nd August

After the Earthquake.

Mr. P. Degen.

Comp: Souvenir of

America.

Bloom of the Month.

Thursday 6th September

Genetically Modified

Crops.

Dr. Brenda Harold.

Comp: Best Garden Vegeta-
ble

Bloom of the Month.

Thursday 4th October

Chinese Wok Cookery.

Mrs. Sandra Webb.

Comp: Plate of six home
made biscuits.

Bloom of the Month.

Thursday 1st November

Annual Meeting.

Pot Luck Supper.

Bloom of the Month.

Thursday 6th December

Xmas Flower Arrange-
ments

Comp: Small table decora-
tion

Fogou

The idea to spend 24 hours alone, in the dark, damp confines of a man-made cave came, quite literally, from a dream.

There are many theories about the possible uses of fogous but one only has to contemplate the effort involved - and the fact that the fogou still stands many centuries after all traces of the settlement in which it was built (or perhaps was built around it) have disappeared. Why build a store to last much longer than your home?

The majority of my stay was within the L" shaped creep which is a much smaller chamber opening off the main passage. The "toe" of the L returns towards the fogou entrance and it was here that I spent many hours sitting on a bed-roll mat meditating because it felt most isolated and calm. I started with meditation for perhaps a couple of hours, all the while sat unmoving. Eventually I moved to my bed and lay down. I was aware next of having slept for a short time, and of feeling chilly.

During one meditation I felt drawn to lie down. Logic interfered arguing that "I was busy meditating" but the feeling persisted so I turned onto my right side and lay down. As I did so, in the cramped toe of the creep, I connected with a badly injured person. He was on the point of death and for a brief moment I feared for my own life. Healing seemed to take place rapidly though and within a short time I felt able to continue with my meditations again. The experience was brief but powerful in the feeling of the benevolent purpose of the carefully crafted fogou. Other realisations came through too. I should spend more of my free time developing my creative, practical skills; metalwork and blacksmithing, woodwork and turning, teaching more dowsing and life-path workshops.

Once darkness arrived it was absolute and complete. It mattered not whether my eyes were open or shut, nothing was visible. Very few sounds were audible other than the occasional drips of water from the roof. The night passed in much the same way as the day, with periods of sleep and recumbent meditation. Dawn was heralded not by light but with bird song, particularly including my favourite, the Robin. The prospect of a night within the environment of the fogou had held a few fears for me but I had managed to put that fear into a relevant context and, by facing that fear, had conquered it. Although I had eaten nothing since cereal and toast for breakfast the day before, there were no hunger pangs.. After packing away my possessions I took a few moments to say a brief farewell, and then emerged into a weak but very special sunshine. I felt shaky and somewhat disorientated but very happy. Returning to "normality" has found me filled with a quiet positivity have had many people sending me such positive messages that have been brilliantly supportive

Imagination creates inspirational images in the distance. Doubt, when dwelt on, create walls that block our inspirational view. Doubt is normal so don't fight it, Allow the doubts to appear as clouds, and use the wind of courage to blow the clouds through the sky of your inspiration.

This is an extract from the account. Copies are available by ringing Roger Bradley on 07770 315069.

[Roger lived in North Dean for some years, he still lives locally.]

STEVE NEWMAN'S TREE & HEDGE SERVICE

Holly House, Archway, Speen, HP27 0SB
01494 488790

**A friendly, personal service offering advice and free quotations
 for all your Arboriculture needs**

- Surveys and reports
- Sympathetic tree reshaping
- Tree thinning to allow more light into your home and garden
- Removal of dead, diseased or dying timber to rejuvenate tired trees and eliminate the worry of dead wood damage to your own and others' property
- Felling or dismantling of trees which are 'past their best' or are in a dangerous condition
- Topping of 'out of control' conifers
- Fruit tree pruning for more attractive and productive trees
- Tree planting and tree relocation
- Hedge cutting and shaping

We are fully insured and provide a tidy and efficient service



Barbie



Crayola



TREATS II
 A Tradition of Good Toys!



TREATS II

5-7 Duke Street
 Princes Risborough
 Bucks. HP27 0AT.

Tel: 01 844 344354 Fax: 01 844 274540



playmobil



MECCANO



TREATS II, the greatest selection of toys in the area!

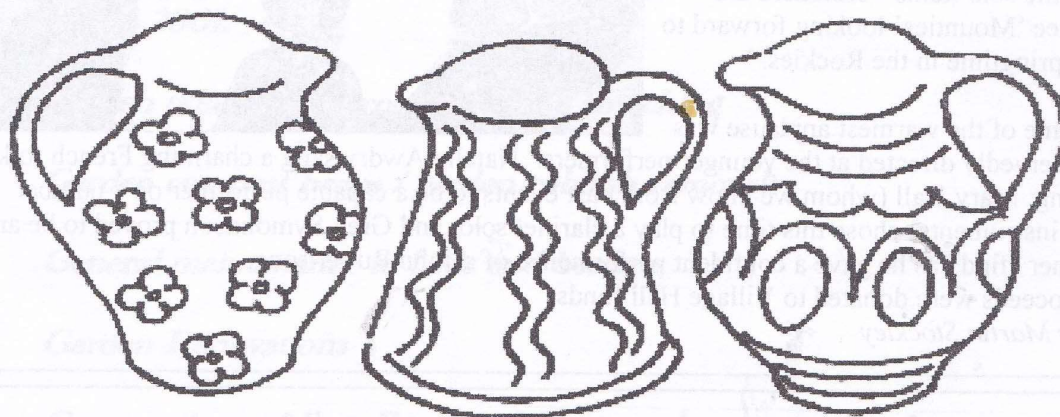
Scientific & Educational

SPEEN POTTERY

Tel: (01494) 488 206

DECORATIVE EARTHENWARE

by Tessa Rubbra



The track leading to SPEEN POTTERY runs down a lovely secluded valley just outside the village of Speen. The Pottery and Showroom is part of an old cottage with a delightful garden. There is parking space at the pottery.

On display in the showroom are examples of beautifully coloured and fine tableware. Special Commemorative Plates and Bowls can also be made for Wedding Presents, Anniversaries and other occasions that need to be remembered.

The Pottery is open every day, but if you want to see Tessa to discuss an order it would be advisable to ring before coming.

Tessa & Ben Rubbra have relocated to
Chagford in Devon
If you are in the neighbourhood they can be found by
asking at the Chagford Craft shop

ALL IN THE APRIL EVENING

Speen Choir and individual performers from in or around the village presented a musical celebration of Spring at the end of April called, appropriately, "All in the April Evening". The concert took place in Speen Village Hall on two nights and played to a full house each time. As is usual on these occasions, a hearty supper was included in the ticket price and a licensed bar was available.

The Choir sang a variety of songs ranging from Gershwin to Bach, from Hammerstein to Haydn, and Gwen Palmer provided accompaniment throughout. Members of the Choir also provided some of the solo items - seen here are three 'Mounties' looking forward to "Springtime in the Rockies."



Some of the warmest applause was deservedly directed at the younger performers. Natalie Awdry sang a charming French folk song; Mary Hall (whom we know from past events to be a capable performer on a number of instruments) chose this time to play a clarinet solo; and Greg Symondson proved to be another "find" as he gave a confident performance of a John Rutter song. Proceeds were donated to Village Hall funds.

By Martin Stockley

WE'VE MOVED!



B. A. HOGG (Motor Body Repairs) Ltd.

Oh Yez! Oh Yez!
What Can We Do for You?

- ◇ Free estimates, at any location.
- ◇ Free collection and delivery service.
- ◇ Easy access and ample parking.
- ◇ Account facility available
- ◇ Fast & friendly service.
- ◇ Return to home service.
- ◇ Company & fleet service.

Unit 3
Fairview Industrial Estate
Kings Road
High Wycombe
Bucks HP11 1RY.

Interested?

Ring: 01494 512020 (3 lines)



**ZURICH
INSURANCE**

ESTABLISHED 1972

THE INSURANCE SERVICE

churchill





Paul Perriss Garden Services

01296 432170 / 07949 839275

Paul Perriss formerly part of Chiltern Meadows can offer the following garden services during the forth-coming growing season 2001:

Garden tidies - mushroom compost mulching

Garden compost heaps / garden rubbish removals

General maintenance to beds and borders

Garden Renovations

Constructions of Bog, Rock and Scree gardens

Soft Landscaping

Planting Schemes....

Also Introducing

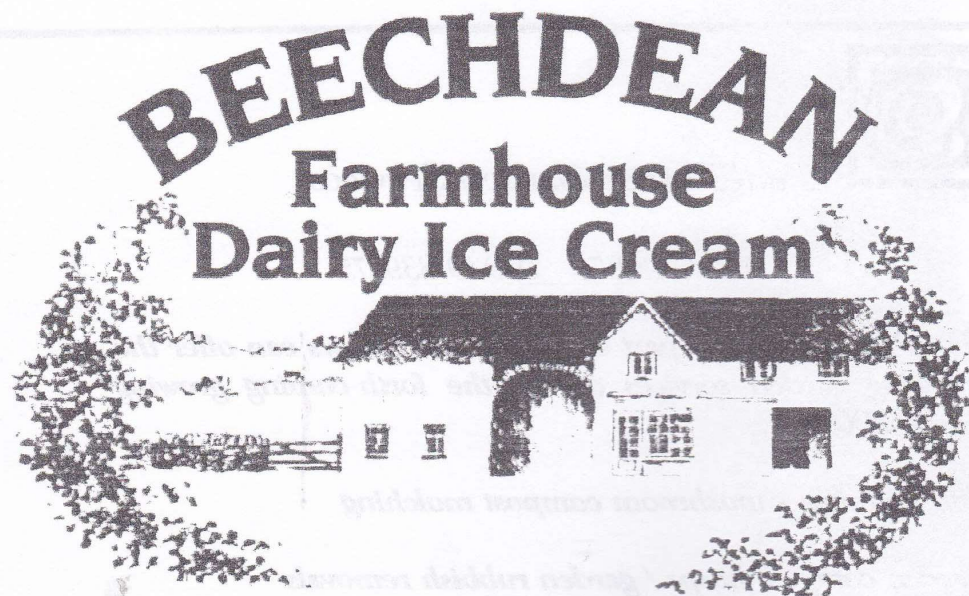


Aquascape's

Aquatic Pond & Water feature Consultants

Design, Installation, Maintenance & Renovation Specialists.

Please call Paul for further information, free quotation and references on the above telephone number.



**Come to the farm and view
our range of delicious
farmhouse products
You will be amazed
at the selection.**

**available from
Beechdean Dairies,
Old House Farm, North Dean.
Open normal office hours
Monday to Friday**

**Tel : 01494 563980
www.beechdean.co.uk**

Trekking and Painting in Nepal

It is impossible, in a few words, to put across the wonder of four weeks walking, drawing and painting and experiencing life in Nepal - . This extract from our diary will give you just a taste of our experience. Our group of 14 painters and trekkers and 12 Sherpas and porters left our guest house, BIRTHANTI with some reluctance, having been so well fed and looked after, to walk to the village of Gandruk 7000 feet up in the Annapurna Sanctuary. Our seven porters went ahead, even though they were carrying all our clothing and equipment. Their pace was much greater than our 'steady plod' and we wouldn't see them again until the evening.

Our trek, around ten miles, took us first along the banks of the spectacular River Modi, bordered by rice paddies. Rickety wooden bridges joined the villages. We passed ancient water mills and enjoyed the colour and sounds of the bird life - kingfishers, parrots and parakeets. After a couple of hours easy walking we stopped for a drink and then began the climb to Gandruk. Our five Sherpas, ever attentive, showed the way and made sure that everyone was comfortable with the pace.

We climbed along the paths and up the steps to a lodge at about 5,500 ft with views down the valley. Ahead we could see the peaks of the Annapurna range. After an hours rest we continued up to Gandruk, arriving at about 5 o'clock. We were now amongst the terraces of corn and wheat and looking down on eagles, Egyptian vultures and a variety of hawks and falcons. Rhododendrons provided abundant colour amongst the mass of bamboo and other trees. Our lodge had the ultimate luxury - private bathrooms with solar showers

The following day was a painting day. Everyone was up at dawn for the clear early morning, close up views of Annapurna (27,000 feet), Fishtail (26,000 feet) and the surrounding snow covered Himalayas.


In the afternoon we walked, drew and painted around the village until dark (around 6.30 pm) when the temperature dropped considerably.

The next day, after breakfast, we walked down 1500 feet (12 miles) to Tirkhedhunga.. We left the high Himalayas behind us and looked down on the Modi valley until we turned the corner and joined the route to Tibet. There were many donkey trains carrying everything that is too heavy for porters - cement, grain, beer, salt etc.

When we arrived at Tirkhedhunga we met the non-painting members of our group who had taken an alternative trek up to 10,000 feet at Foon Hill.. The following day we walked an easy 2,500 feet down following another river valley to BIRTHANTI. It is here that all the trekking routes start. Across the bridge come Sherpas, local people, porters carrying pipes 8,000 feet up to a new hydro-electric scheme, donkey trains, goats, buffalo and merchants selling everything from salt to live chickens. There are many Buddhist priests and pilgrims going up to Muktinat (6 days walk) and on to Tibet, serious climbing groups going up to Annapurna Base Camp and the many trekkers who just wish to enjoy this wonderful kingdom.

We stayed here for two days painting and resting before beginning our journey back to Kathmandu by foot, ancient bus and small aircraft. It was the end of an amazingly worthwhile and fulfilling experience. We did lots of painting and feel we also did some good along the route.

By John Davies




"2001. A Speen Odyssey"

**FUTURISTIC
FANCY DRESS
COMPETITION**

At the Speen Fete, 14th July 2001
Competition: 1:45 pm on the Playing Field

Great Prizes to be won!

Under 8 years
Over 8 years
Adults - over 16 years

Generously Sponsored by the JNP Partnership 

GRADE II LISTED BUILDINGS SPEEN

The Old King George II

House. C17, altered late C18s and C19. Originally timber framed. Remainder rebuilt in flint with brick dressings, the road front rendered and white washed. Old tile roofs, brick chimney small C19 external chimney.

HAMPDEN ROAD (SPEEN)

King William IV Public House II

Public house. Documented 1668 but probably altered or rebuilt early-mid C18. Chequer brick, Old tile roof, tall central brick chimney, 2 storeys, cellar and attic. Blocked window with original gauged head to right. Interior has been altered.

HAMPDEN ROAD (SPEEN)

Rose Cottage

Small house. Early C19. Flint with Denner Hill stone quoins, and brick eaves and window surrounds. Slate roof, brick chimney to left. 2 storeys, 2 bays. Central blind roundel with gauged brick surround to first floor centre; flush-panelled door below with flat wooden hood on brackets. Rear has Denner Hill stone blocks forming cross pattern to centre.

HAMPDEN ROAD (SPEEN)

The Old Post Office II

House, part formerly a shop. C18 part is of chequer brick. C20 tile roof, flanking rebuilt brick chimneys, originally both external. Denner Hill rubble and brick with some slight timbering and hipped tile roof. C19 shop front below Rear bay originally a bakery the upper room with hayloft door. Covered entry and weather-board stable bay to far left.

HAMPDEN ROAD (SPEEN)

Gable End, Aveluy and Corner Cottage

3 small houses. 3 late C17 early C18 bays. Original part has timber frame with brick infill to rear but is rebuilt in brick to front. Old tile roofs, brick chimney, between original left bays. Blind window above. Small outbuilding attached to right, formerly a chair bodger's shed. Interior fireplace is dated W1776 on lintel.

CHAPEL HILL (SPEEN)

Rosebank Cottage II

House. Dated IW 1794 on brick. Chequer brick, tile roof, brick chimney to left. Above door is a blind panel with blue headers and central red diaper.

CHAPEL HILL (SPEEN)

Speen Church (Baptist) II

Baptist church. Earliest part documented 1802, vestry added to right 1817, extended to rear 1834. Hall added to left 1970s. Original part is of flint with dentil brick eaves and old tile roof. Vestry to right is dated TO 1817 on brick over door and has other dated and initialled bricks in door jambs. Flint with brick dressings. Similar narrow wing to rear is dated 18 TA 34 on stone tablet. Interior gallery of C. 1830-40 around 3 sides with simple stick balustrade, on wooden column shafts; pulpit with similar balustrade to centre of N. wall; rows of hat pegs along W. wall; removable shutters to vestry.

SPEEN

Speen Farmhouse GV II

House. C15 cross wing, main range of c.1600, rebuilt in flint with brick dressings c.1800. Old tile roof. Rebuilt brick chimney shafts to centre and left. Interior: cross wing has 2 cruck trusses and one bay with heavy C15 floor joists.

Barn adjacent to S.E. of Speen Farmhouse GV II

Barn. Mid-late C18. Timber frame with weather board cladding, brick and flint plinth, and old tile roof. Included for group value.

Barn 20w to east Speen Farmhouse II

Small barn. Late C18. Timber frame and weather board, flint and brick plinth, old tile roof. Included for group value.

STUDRIDGE LANE (SPEEN)

Elm Tree Cottage II

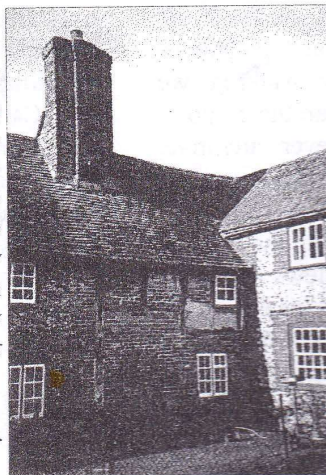
House, formerly 2 cottages. Originally C17-C18, rebuilt in brick mid C18-C19. Old tile roof, 2 intermediate brick chimneys. One storey and attic.

TURNIP END

Darvills Cottage II

House. Early C18, altered and extended. Front rebuilt in flint with narrow brick dressings; some timber framing. Old tile roof, rebuilt central

brick chimney.



BUILDINGS OF SPECIAL ARCHITECTURAL OR HISTORIC INTEREST

The Secretary of State for the Environment is required to compile lists of buildings of special architectural or historic interest for the guidance of local planning authorities. Conservation policies are often based on the lists, which are being revised within a national survey programme.

How the buildings are chosen

The principals of selection for these lists were originally drawn up by an expert committee of architects, antiquaries and historians, and are still followed. Buildings that qualify for listing are (a) All buildings before 1700 which survive in anything like their original condition. (b) Most buildings between 1700 and 1840, though selection is necessary, and (c) between 1840 and 1914 only buildings of definite quality and character: the selection being designed to include the principal works of principal architects. Selected buildings of 1914 to 1939 are also considered.

In choosing buildings, particular attention is paid to:-

Special value within certain types either for architectural or planning reasons or as illustrating social and economic history (for instance: industrial buildings, railway stations, schools, hospitals, theatres, town halls, markets, exchanges, almshouses, prisons, lockups, mills).

Technical innovation or virtuosity (for instance cast iron, prefabrication, or the early use of concrete).

Group value, especially as examples of town planning (for instance, squares, terraces or model villages).

Association with well-known characters or events.

A survey is carried out by the Department's Inspectors of Historic Buildings, for each local authority area, and buildings of importance are classified in grades to show their relative importance.

Grade I. These are buildings of exceptional interest (less than 5 per cent of the listed buildings so far are in this grade).

Grade II. These buildings are of special interest, which warrant every effort being made to preserve them. (Some particularly important buildings are classified Grade II*).

Listed Buildings

Listed buildings as described in these notes are buildings listed by the Secretary of State for the Environment as being of special architectural or historic interest and are often occupied buildings.

NORTH DEAN VILLAGE HALL FOR HIRE!

**Are you looking for a
quiet country location
close to High Wycombe
to hold your:**

- ✓ **Wedding Reception?**
- ✓ **Children's Party?**
- ✓ **Family Celebration?**
- ✓ **Meeting?**

NORTH DEAN VILLAGE HALL may be just the venue!

- ☺ Recently refurbished, it offers the ideal setting for the smaller gathering
- ☺ Licensed for 80 people
- ☺ Ample car parking
- ☺ Playing Field surrounded by beautiful countryside
- ☺ Children's playground
- ☺ Competitive rates



For more information contact: MEGAN CHINN 01494 563074

SPEEN PLAYING FIELD

WORKING PARTY

In anticipation of a busy summer, the Speen Playing Field Association (SPFA) asked villagers to join them at a working party on the May bank holiday. There was an excellent response with about 25 people setting to work.

The Playing Field was given a thorough overhaul. The pavilion was repainted; hedges cut back; trees trimmed; swings painted; litter cleared; the cricket square rediscovered and cut; play area cleared and weeded, etc. Another working party is planned to install the new benches and litter bins that are generously being provided by the Parish Council.

The SPFA is most grateful for the support. **MANY THANKS TO ALL WHO HELPED.**

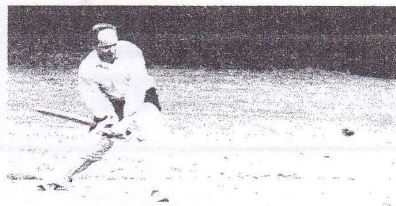


VILLAGE CRICKET

Several villagers have commented that it would be good to have some cricket on the Playing Field, particularly as the King William IV is now a pub again. Simon Cleaver and Tim Crossley gallantly agreed to arrange some occasional games.



The intention is to play some social cricket, including young people and families. Teams to be selected from those that turn up, standard of individual ability is not important. Teas and other refresh-



ments available. Bring your own deck-chairs! The first of this years games was

held on Sunday 27th May. Everyone thought it was a great success. Many thanks to Simon and Tim.

PLAYING FIELD ENTRANCE

The SPFA has reviewed the use of the Playing Field and the consequent demands. It concluded that Village use is increasing because:

The success of the Speen Millennium Pageant has inspired more interest in village functions. The Village Hall has limited accommodation and the Playing Field is an asset that can provide an additional



venue for events. The Speen Millennium Marquee was purchased by donations in anticipation of this increasing demand. The Speen Festival over two weeks in September 2001, to take place in the Marquee on the Field, will be such a major new use.

The recent re-availability of the King William IV as a village pub is also generating more interest in activities on the Field and occasional social cricket games for all the family have started again.

There has been an excellent uptake of football and tennis training for our young people.

There are more young families in the Village and they are making increased use of the children's play equipment on the Field.

The Pre-School is thriving and making more use of the facilities by the Pavilion.

There now are several other events held on the Field, such as the Fun Day and Bonfire Night, and more are anticipated.

A welcome consequence of these activities is that the Playing Field is in frequent use. However, a major problem is that the entrance to the Field is inadequate to take the increased vehicular traffic that some of the above activities generate. There is no nearby parking. Some hardcore was laid many years ago but the lower part of the field from the entrance rapidly becomes very muddy when there is any rain causing problems for any vehicles. The SPFA is therefore planning to upgrade the entrance with a hard surface that will be grassed. Funding is now being sought with the intention of carrying out the work in the summer.

SURGICAL CHIROPODIST

HOME VISITS BY APPOINTMENT

Telephone
NAPHILL (01494) 562569

Mrs Rosemary Stone MSSch MBChA

SR Farm Contract Services

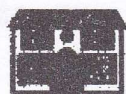
HEDGE CUTTING—FENCING
GROUND EXCAVATION WORK
PADDOCKS AND LAWNS MOWN
GENERAL GARDEN MAINTENANCE
LOGS SUPPLIED

Tel. Steve Rogers—01494 562041

Boas Vista, North Dean, High Wycombe HP14 4NH

RICHARD FERGUSON BUILDERS

All building work
undertaken



- ◆ New houses
- ◆ Extensions
- ◆ Renovations
- ◆ Fireplaces
- ◆ Fitted Kitchens
- ◆ Bathrooms
- ◆ Patio's
- ◆ Decorating
- ◆ Electrical work

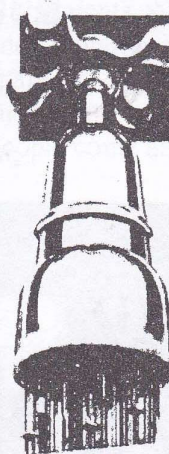
16 Moseley Road
Naphill
High Wycombe
Bucks., HP14 4SQ.



01494 562954

SPEEN TENNIS COURT

- Speen Tennis Court has funds available for grants or loans to help finance appropriate projects. The projects should be tennis/Speen Playing Fields related.
- To apply for a grant or loan write, with full details of your project, to John Davies, Chairman, Speen Tennis, Farthings, Studridge Lane, Speen, HP27 0SA.
- Why not join Speen Tennis? Family membership is only £25 per year which allows you and your family to book and play as often as you wish. The court will be refurbished and painted for the 2001 season. We run coaching sessions for seniors and juniors, with LTA registered coaches, throughout the season. Full details of membership and coaching from Cherry Seekins on 488355.



Is your water as hard as nails?

60% of British households suffer from these sure signs of hard water problems:

- Blocked shower heads
- Slow running taps
- Scum marks in baths and basins
- Excessive use of household cleaners
- Harsh, hard towels and clothes
- Increased water heating bills
- Scaled-up kettles and appliances

Nail all your hard water problems by installing an EcoWater system.



Contact:
MARION BENNET

Sterling Softeners

ECOWATER



Sterling Softeners,

Courts View House, North Dean,
High Wycombe, Bucks., HP14 4NN
Telephone/Fax (01494) 565232

2001

Speen Fete

Saturday, July 14th, 2:00pm

Punch & Judi Show

Fancy Dress
Competition

Vintage Cars

Magic Show

Racing



2001

A
Speen
Odyssey

Pony Rides

Displays

Tombola

Stalls

Competitions

**FAMILY
COUNTRY
DANCE**

Licenced Bar

On
Fete Day
at
7:30 pm
in the Marquee

Fun and dancing for all the family in the evening after the Fete

On the Speen Playing Field

WELL DONE SPEEN SCHOOL!

We have just heard that, based on last year's SAT's results, Speen School has been granted an Excellence Award which means that the school is placed in the top 5% of schools in the country. Headteacher Denise Nayna is absolutely delighted because the award not only came in the form of a certificate but there was a cash prize attached to the award as well. She puts the success down to team work. There are two teachers at the school: herself and Mrs Jean Lewton, Classroom Assistant Judith Fitt and Secretary Brenda Morris. However, Mrs Nayna is convinced that the team of readers, "Gloria's Army" as she calls them, has helped enormously with assisting the children.

Pictured here are a few of the helpers, George and Catherine Butler, Gloria Holmes and Barbara Collett, pictured with

some of the children. Others who help with reading are Jean Elder, Barbara Penny, Peter Collet, Tony Redrup and Adel Casey, as well as many other reserves.

Currently there are 45 children in the school and the list for next year's new entries is full. "It's so nice that Granddads come to the school and it's lovely to see other people coming in and out of the school. I wish I had more time to talk to people but teaching plus the paperwork keeps me very busy."

Mrs Nayna loves working in Speen because she says it is such a lovely community with very supportive parents and an active PTA. She invites anyone with talents such as cookery, woodwork, and computer skills, who may have time to spare, to contact her. "Even if it is for a short time, we would love to have more people come and work with the children."

As for the future, Mrs Nayna says that standards are improving all the time, which is good. She says her only slight worry is that there is a lot of pressure on the children and perhaps the variety of subjects is more limited now due to time constraints. We have displayed some of the children's computer-generated drawings in the colour section.

By Suzi Rose



What's on ? - in Speen and North Dean

NB.	Every Wednesday evening - Ladies Tennis - 7pm - 9pm (contact Christine Oliver 488409)	Speen Tennis Court
June		
5th	W I. "Tai Chi and Me" Sylvia Eastgate	Speen Village Hall
17th	Family Fun Day	Speen Playing Fields
17th	Village Barbecue. Noth Dean	N.D. Playing field
24th	Village Cricket Match	Playing Field
30th	Summer Ball. Speen School P T A	Speen School
July		
5th	W I. "Glass Painting" Mrs J Dunsterville	Speen Village Hall
14th	Speen Village Fete	Speen Playing Fields
14th	Speen Art Exhibition	Speen Village Hall
August		
2nd	W I. "After the Earthquake" Mr P Degen	Speen Village Hall
4th	North Dean Village Fete	N Dean Playing Fields
13th-17th	Play Scheme. Wyc Dist Council 9am-4.30pm	Speen Village Hall
September		
4th	Parish Council Meeting 7.30pm	Speen Village Hall
5th - 9th	Speen Festival (Contact Marjorie & Martin Stockley 488101)	
6th	W I "Genetically Modified Crops" Dr Brenda Harold	Speen Village Hall (or Chapel)
7th & 8th	Speen Festival Event ""Alice"	Marquee -Playing Field
8th & 9th	Speen Festival Event "Art & Photographic Exhibition"	Speen Village Hall
9th	Speen Festival Event "Speen Antiques Day"	Marquee - Playing Field
12th	Speen Festival Event ""Jazz in the Marquee"	Marquee - Playing Field
14th	Speen Festival Event "Natural History of Speen"	Speen Village Hall
15th	Speen Festival Event "African Hand Drumming Workshop"	Marquee - Playing Field
15th	Speen Festival Event "Gala Music Concert"	Marquee - Playing Field
15th	Mens Breakfast	Speen Village Hall
October		
4th	W I "Chinese Wok Cookery" Sandra Webb	Speen Village Hall
5th	Concert with Bryn Haworth	Speen Village Hall
11th to	"Painting Days". Nick-Wheeler Robinson 562167	Pigott's
-14th	"Painting Days". Nick-Wheeler Robinson	Pigott's
12th	Village Quiz	Speen Village Hall
November		
3rd	Ladies Breakfast	Speen Village Hall
8th	W I	Speen Village Hall
28th	Parish Council Meeting 7.30pm	Speen Village Hall
December		
1st	Men's Breakfast	Speen Village Hall
6th	W I	Speen Village Hall
7th	"Christmas Murder Mystery" The Ubiquitous Theatre Co	Speen Village Hall
8th	Christmas Village Fair (in aid of the Village Hall)	Speen Village Hall

Who's Who in the area?

Speen & North Dean News Editor	Glenn Hart	488528
Speen Residents Association	Gordon Hall	488331
Speen W.I.	Mary Dawson	488222
Speen Horticultural Society	John Payne	488259
Speen Playing Field Association	Marion Tozer	488497
Riding for the Disabled	Gloria Holmes	488420
Village Hall Committee, Speen	Catherine Butler	488412
North Dean Hall Committee Chairman	John Rogers	562041
North Dean Village Hall Booking Secretary	Megan Chinn	563074
Speen Pre-School	Janis Hearn	488440
Speen School PTA	Amanda Cleaver	488288
Speen Tennis Court	Cherry Seekins	488355
Guides	Pauline Hall	488372
Baptist Church	Andy Gower	488758
Speen/N.D. Good Neighbours	Suzi Rose	488696
Mother & Toddler Club	Tracy Salmon	488697
Millennium Committee	Martin Stockley	488101
Neighbourhood Watch	John Radford	488679
Speen Church of England School	Mrs Nayna	488321
Speen Stores	Sandra	488258
Fete Committee Chairman, Speen	David King	01844 344839

Hughenden Parish Council Chairman: John Rogers 562041

Lacey Green Parish Councillors : Don White 488437

Peter Simmonds 488016

Wycombe District Councillor : Paul Rogerson 488315

Buckinghamshire County Councillor Tim Jones 01296 622975

The ward Councillors for Hughenden Valley & North Dean Are:

Mrs Ann Hildesley 01494 563374 Mrs Lynn Sullivan 01494 563620

Chris Morley 01494 562714 John Rogers (Chairman) 01494 562041

The Council Office is open to the public on Monday, Wednesday & Thursday from 9.30 to 11.30.

During holiday times the contact numbers will appear on the office notice-board.

Contact Numbers for the Police in the area:

Sergeant Russ Murden 01494 717799

PC Paul Sorensen 01494 715352

Inspector Martin Bolton 01628 816910 (responsible for Hazlemere but based in Marlow)

Local Control room 01494 465888 Local Help/Crime Desk 01494 736735

Fax Numbers: Hazlemere 01494 686299. Marlow 01628 816921

Help/Crime Desk 01494 736737

All roads lead to JNP

www.jnp.co.uk

Helping you buy or sell your home in The Chilterns and South Buckinghamshire



ESTATE AGENTS, VALUERS, SURVEYORS, FINANCIAL ADVISERS

28, High Street, Princes Risborough
01844 345666

Also at Prestwood 01494 8660006 ▣ Hazlemere 01494 716000 ▣ High Wycombe 01494 528000