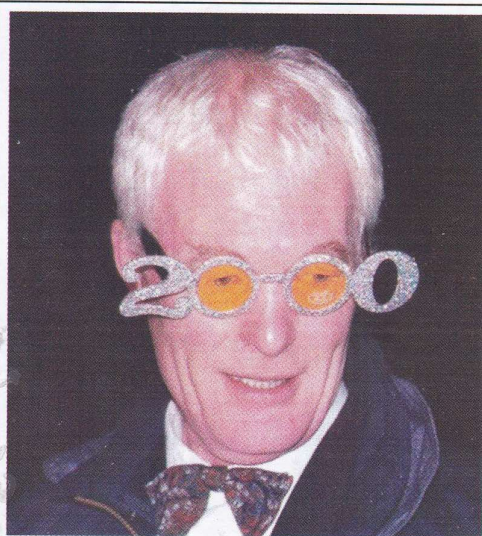


Welcome 2000



*Martin Stockley
wasn't the only one
seeing in the New
Year through rose?
Coloured glasses at
the Bonfire*

*It wasn't only the Bonfire
that brought out the
international mad hatters.
The Millennium Feast
did as well*



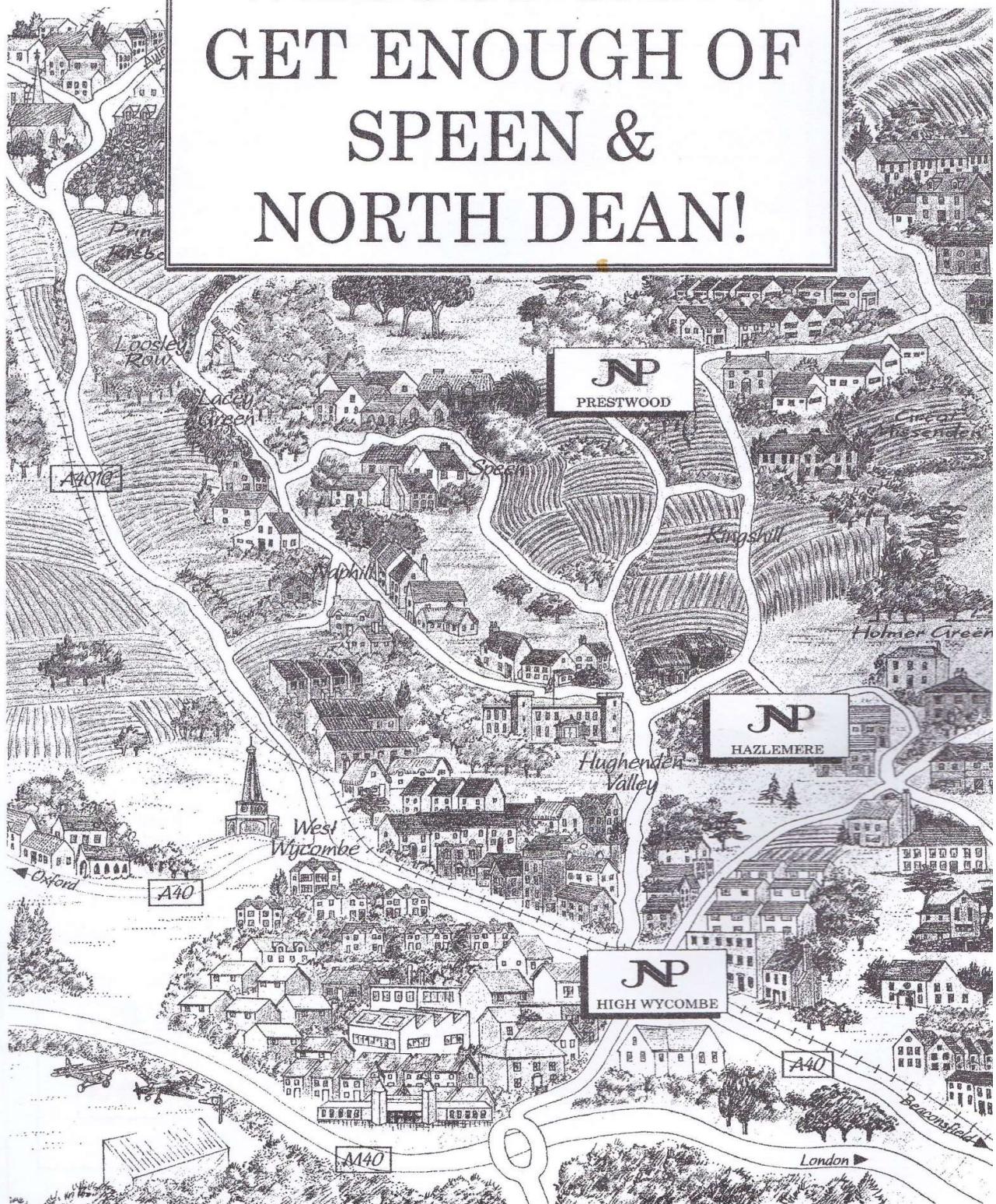
*The moment of
the New Dawn
Of the New
Century
Of the New
Millennium
Walkers
ascending
Piggotts Hill
1st January
2,000*

The JNP Partnership



www.jnp.co.uk

WE JUST CAN'T GET ENOUGH OF SPEEN & NORTH DEAN!



ESTATE AGENTS VALUERS SURVEYORS FINANCIAL ADVISERS
High Wycombe 01494 528000 Hazlemere 01494 716000 Prestwood 01494 866000

THE HOME OF REST FOR HORSES – WESTCROFT STABLES

Anyone who has read Black Beauty will know that horses which lived in the country were, in the main, the fortunate ones. Country folk depended upon their horses and usually had space to keep them. They were also closer to the main food supply for their horses, grass and hay. Towns and cities were very different and the horses in these places were worked very hard indeed and lived in very poor conditions, often in the backyard of their owner. Good caring people had, over many years, tried to aid tired, run down, injured and sick horses and to call attention to cruelty when they saw it. The Home of Rest for Horses was created as a result of the need to care for the interests of the working horse.

The Home of Rest for Horses was founded in 1886 and had an establishment in Neasdon later leasing a yard in Acton. The aim of the Charity was to provide a refuge for sick or injured horses and to have a place of rest and respite for any which needed it. Owners too were grateful as a system of taking in a sick or lame horse and loaning another to do its work was begun. Life was not easy for families either; the loss of a horse meant that the breadwinner was out of work which could leave families in great need. Not many horses made it to a long peaceful retirement in those days.

The Charity flourished and was able to purchase Westcroft Farm at Cricklewood. In those days it enjoyed 20 acres of good pasture despite being only four miles from Marble Arch. During the 1914-18 war the Charity supplied fully equipped horse ambulances to evacuate wounded horses from the front. Westcroft Stables was very successful and built a solid reputation for itself by becoming an authority on the welfare of the horse. The arrival of the internal combustion engine gradually saw the demise of the working horse on the streets of our towns and cities. The need for a place of safety for the horse did not lessen. A compulsory purchase order forced the Charity to seek a new location and as there was no longer a requirement for a stable yard in London, The Home of Rest for Horses moved to Boreham Wood in 1933 and continued its good work. As a result of the change in transport a large number of perfectly fit and healthy horses were no longer required so the Charity began its retirement scheme. London continued to sprawl out into the

surrounding countryside and once again The Home of Rest for Horses had to be relocated and so in 1975 it came to Speen.

So here we are today. Our "pensioners" are all over 20 years of age and remain with us for the rest of their lives. They are very well looked-after and do no work at all. They come from a variety of backgrounds from ex-police horses to aged but well-loved family ponies. We still take working horses for rest and recuperation. Sadly these days some horses are homeless due to the breakdown of marriage and in the subsequent division of the assets, the paddock is the first to go!

Any surplus income is given in grants to applicants who are carrying out work or research into equine welfare. This can be in any sphere whatsoever. The Home of Rest for Horses paid for the research into the care and acclimatisation of the British horses that were taken to Atlanta for the Olympic Games. We also paid for a barn and good stabling for a small group who take in Dartmoor Ponies which are found sick or injured.

The Home of Rest for Horses is proud of its longstanding reputation as a centre of excellence in the care and welfare of the horse. We are open every day from 2 – 4 pm The horses enjoy seeing their visitors, especially the ones with carrots!

By Mo Jepson.

Hughenden Builders

Established 22 years

All Building Works Undertaken

- ◆ Extensions.
- ◆ Alterations.
- ◆ Loft Conversions.
- ◆ Roofing – all types.
- ◆ Drives, Block paving, Tarmac etc.
- ◆ Patios, Walls, Garden landscaping.
- ◆ Plumbing, Plastering, Carpentry.

Planning Service.

Clear & Concise Plans

Single Story £150.00

Two Storey £300.00

(plus council fees)

Free detailed estimate with drawing.

Planning fees returned if tender accepted.

**171 Main Road
Naphill**

**Tel: 01494 562937
01494 438057**

Letters to the Editor.....

Dear Editor

Recently there has been talk about altering/improving the parking arrangements for the village shop. I think that any problems are caused not so much by cars parked on the road there as by the fact that many people drive into the village far too quickly, especially along the road from the chapel to the junction with Hampden Road. This stretch is particularly awkward because the road curves slightly to the left just after Abbotswood, and also at certain times of day the sun can be fairly blinding as one approaches the brow of the hill by the shop.

Perhaps traffic calming measures would be a good idea? They don't necessarily have to be speed bumps there are plenty of other devices which make people aware that they are entering a village and therefore need to drive more carefully. Many towns and villages have some sort of traffic calming nowadays: isn't it time that our local councillors considered doing something similar in Speen?

Jenny Cowan.

Dear Editor

I think a vote of thanks should be given to Keith Jones and his assistants for the excellent firework display they organised to herald in the new Millennium.

So, thank you Keith.

Long may your efforts for the village continue and be much appreciated.

A grateful Well-wisher.

Thank you to all who very kindly contributed to the collection for the National Kidney Research Fund. A sum of £44.93 was raised.

Doris Redrup, North Dean

Dear Editor

The Millennium Seat is now installed in place of the bus shelter at the end of Water Lane. It has been presented to the village by the Lacey Green Parish Council as part of the Millennium celebrations.

Don White

Editor's Letter

As you can see we have had very few letters this Issue. Is it because the Millennium is still effecting the "little grey cells"? Or are there no burning issues to write about? Or is it a fear of retribution for what you write? (I have had letters pushed through my letter box at the dead of night unsigned){and articles for that matter, which have missed the copy date}.

Do you like the colour pages? We hope to be able to use colour regularly, thanks to a offer to print these pages by Reg Taylor. Thanks Reg.

I would like to encourage writers to write about the event, evening or fund raiser as soon as possible after it has happened. The resulting article has a better flavour of the occasion.

NEXT COPY DATE

Friday 12th May 2,000

Copy and future events should cover dates until October when the following Issue should be out.

After this years prolonged Christmas celebrations, we found there was an awful lot of paper and card going into the bin. Why aren't we recycling **all** of it? Is this too much to ask to save a tree? There have been many battles to save trees in Speen. Why not trees everywhere?

The team wish you all a very happy Year 2,000.

By Glenn Hart

Please Support your Local Art Exhibition Speen Village Hall On Speen Fete Day Sat 8th July 2,000.

There will be five Speen
artists exhibiting :

Photographs and Paintings in various media.

Some works will be for sale,
some for exhibition only.

Donations from the sales will
be given to Speen Magical
Millennium Fete and Princes
Risborough School.

Entrance will be free.

A Letter from Hughenden Parish Council

On behalf of the Parish Council and myself may I wish you all a rather belated Happy New Year? The new Council which was elected last May has now settled in, and is working with a much more positive approach.

There are four Councillors who represent Hughenden Valley ward of which North Dean is part. They are Chris Morley, Mrs Lynn Sullivan, Mrs Ann Hildesley and me, and I take responsibility for north Dean.

I was talking to a friend a few days ago, and he told me that not only did he not know that I was a Parish Councillor, but he didn't know that the Parish Council existed. I wonder where I have gone wrong. Perhaps he said it with tongue in cheek.

This does highlight the fact that not enough is known generally of what the Parish Council does or how it works. We are hoping to arrange a Workshop in each Ward where anyone can come along and talk to their Ward members, get to know them and perhaps have a few questions answered.

To celebrate the new millennium we have a number of projects underway, mostly with a view to improving the environment. A line of trees has been planted down Cryers Hill, and in conjunction with the National Trust we hope to plant a copse of disease resistant elms on land adjacent to Valley Road.

On Saturday 15th January we held a ceremony to plant an oak tree on the green verge opposite the Harrow Public House. It was attended by over 120 adults and children, the children playing their part by planting bulbs around the base of the tree. I hope this will make a good display in the spring.

Each village within the Parish has its own project for the millennium, and these are being grant-aided by the Parish Council. North Dean is erecting a village sign outside the Village Hall, and it is hoped to unveil this at the Village Day on June 25th. I hope you will come along to this and also enjoy the activities during the day.

The Parish Council had a number of other projects put forward, but they were either too costly or not suitable for the millennium. They have been listed under Project 2000 and will be looked at in the near future.

We now have our own office, which is situated in the Car Park opposite Great Kingshill Common.

All meetings are now held there, the Full Council being on the 2nd Tuesday in each month except August, and Committees as advised. All meetings are open to the public.

The one exception is the Annual General meeting which this year is on May 23rd and, subject to confirmation, will be held in Naphill Village Hall. This meeting is a Public Meeting open to any Parish resident to speak. If you have an interest in the workings of the Council please come along and support us.

If you have a problem that concerns the Parish Council please contact me on 562041, or the Clerk, Mrs Lynne Turner, on 01494 715296.

John Rogers

Chairman

Hughenden Parish Council.

LUNCH PARTY AT NORTH DEAN

On Saturday January 15th the North Dean Village Hall Management Committee hosted the annual lunch for the senior residents of the village. As usual there was more than a fair sprinkling of the Committee falling into both categories.

The Hall looked particularly attractive – what a difference the new floor makes – the table linen was crisp, the glasses sparkled, and the napkins and table flowers provided that all important splash of colour.

A delicious two course meal with wine was enjoyed by twenty nine Committee members and guests, including Andy Gower. A “meals on wheels” service was also provided for six residents who were unable to attend.

This was followed by some ‘in house’ entertainment. Bill Chinn sang some old favourites, accompanied by Rachel Wheeler Robinson on our new electric organ (a gift from a resident). There was a reading from Ogden Nash by Nick Wheeler Robinson and Lillian Cash read ‘The Survivors,’ (see page 6) a particularly appropriate piece for the occasion. Then there was a bit of magic from David Morgan with his mystifying card trick.

The afternoon ended with our customary North Dean raffle, with a prize for everyone.

North Dean's Annual Christmas social took place on December 23rd. 45-50 residents attended which included plenty of excited children.

We all enjoyed an excellent finger buffet, kindly prepared by Hannah Rapport, a friend of Nick Wheeler-Robinson, mulled wine warmed up the vocal cords for the traditional carol singing, accompanied by Rachel Wheeler-Robinson and Nigel Hartley on the organ. Nick Wheeler-Robinson and Pat Townsend up-dated us on the third World Project and the Village Census.

A very pleasant evening ended with all the children receiving a Christmas gift.

By Dorothy Hazell

THE SURVIVORS

A tribute to those born before 1940

By Fred Lale

We were born before television, before penicillin, polio shots, frozen foods, Xerox, plastic, contact lens, videos, frisbees and The Pill.

We were before radar, credit cards, split atoms, laser beams and ball point pens, dishwashers and tumble dryers, electric blankets, air conditioning, drip dry clothes and before man walked on the moon.

We got married first and then lived together (how quaint can you be?). We thought 'fast food' was what you ate in Lent, a 'Big Mac' was an oversized raincoat, and 'crumpet' was a treat one had for tea!!!

We existed before 'house husbands', computer dating, dual cars, and when a 'meaningful relationship' meant getting along with your cousins, and 'sheltered accommodation' was where you waited for a bus.

We were before day care centres, group homes and disposable nappies.

We never heard of FM radio, tape decks, electric typewriters, artificial hearts, word processors, yoghurt or young men wearing earrings. For us time-sharing meant togetherness, a chip was a piece of wood or a fried potato, 'hardware' meant nuts and bolts, and 'software' wasn't a word in use.

Before 1940 'Made in Japan' meant junk, the term 'making out' referred to how you did in exams, and 'stud' was something you used to fix your collar to your shirt. 'Going all the way' was staying on the bus to the end of the route.

In our day cigarette smoking was fashionable, 'grass' was mown, 'coke' was kept in the coal house, a 'joint' was a piece of meat we ate at Sunday dinner, and 'pot' was something you cooked in.

Rock music was a mother's lullaby, Eldorado was an ice cream, a 'gay' person was the life and soul of the party and nothing more, while 'aids' just meant a beauty treatment or help for someone in trouble.

We who were born before 1940 must be a hardy bunch when you think of the way in which the world has changed and the adjustments we have had to make.

No wonder that we are confused – and that there is a generation gap today.

But by the grace of God we have survived.

"IS THIS NORTH DEAN'S EVENT OF THE MILLENNIUM"

After watching the marvellous fireworks opposite BIG BEN on Millennium Night, I was totally amazed to see what looked like a stray rocket upended in my garden when I eventually woke up on New Year's Day.

"Gosh!" I thought I could have got a lift home on it at "the speed of something" and missed out on the excitement of the Underground.

However, after days of diligent research it dawned on me that "The RULERS of the Universe" had obviously been in my orbit while I was away in London, and parked their vehicle in my garden.

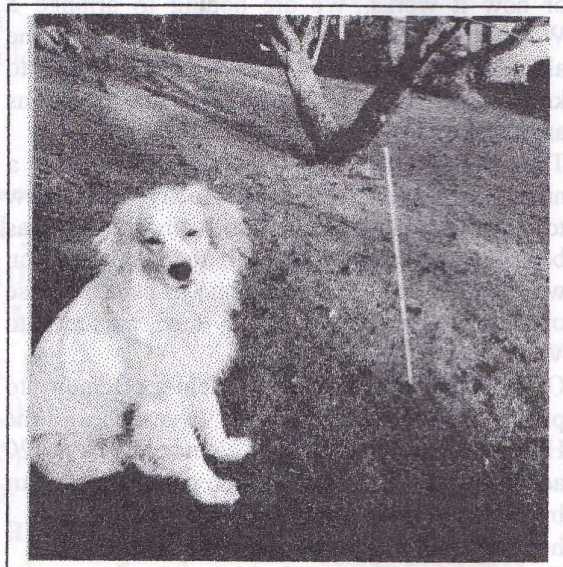
It must have been SUPER JOE and his sidekick LITTLE TOM who had come to North Dean to celebrate with all us earthlings and I was very upset that I had missed this astonishing event.

To recompense for this failure on my part I have set my space dog SUNNY (pictured) to guard this unique piece of technology, and have told him to bark when it's owners return, so that I may have the great honour of meeting them.

Should I remind SUPER and LITTLE TOM that parking fees in the town are about to go up? – Perhaps not – I will only charge them at the current rate!!!

HAPPY NEW MILLENNIUM TO ALL- MAY LOTS OF US SEE IN THE NEXT ONE.

Speen & North dean News Space Correspondent.



SPEEN AND NORTH DEAN GOLF DAY

If there is enough support we will continue to run this very popular event again this year.

It is proposed to arrange two days, one in May at Weston Turville, and a second in September at Princes Risborough. If anyone is interested please contact Dave Evans on 488495 for Speen, or John Rogers on 562041 for North Dean. We welcome new faces to join us on either or both days. This year, to aid the administration, we will require all monies to be paid four weeks in advance of the match.

Whatever your standard of golf don't be afraid to come along and join us. Although we do have a Village Match it is a social and fun day out.

SPEEN MAKES MUSIC

The Village Hall was the crowded venue for another concert in November by the Speen Millennium Choir and other local musical talent.

This was the first in a series of three events progressing through the alphabet of composers and all the pieces performed were written by composers whose names began with the letters A to H. In this way a wide variety of musical styles could be covered from Harold Arlen

(Stormy Weather), Bernstein and Eric Clapton to Debussy, Elgar and Fauré. (Composers from I to Q will get a hearing in April and the final section in the series, P to Z, will be in the autumn.)

A highlight of the evening, and one that everyone hopes will be continued, was the appearance of a number of Speen's young people as performers. Mary Hall

played two clarinet pieces, we heard Richard Gower on the viola and Natalie Awdry, Mel Holmes and Jessica Tomlin put a smile on everyone's face with their harmony version of "I Feel Pretty" from West Side Story.

In addition to songs from the choir, the audience enjoyed solo vocal performances from Phil Bowell, Wynne Davies (providing his own guitar backing), Margaret Lewis and both Megan and Bill Chinn. Gwen Palmer displayed her usual pianistic skills as an accompanist and the entertainment was interspersed with a delicious supper provided by the ever-resourceful Jean Baines.

While it was very encouraging to see the village hall so full, it was a shame that all the tickets had sold merely by word of mouth well before any general publicity was due to take place. A number of people were therefore disappointed and the next event will be run over two evenings.

By Martin Stockley

Mel Holmes, Jessica Tomlin, & Natalie Awdry



TREATS II

A Tradition of Good Toys!



TREATS II

5-7 Duke Street
Princes Risborough
Bucks. HP27 0AT.
Tel: 01 844 344354 Fax: 01 844 274540

TREATS II, the greatest selection of toys in the area!
Scientific & Educational
















The Carol Concert

In December, Speen Baptist Church held its annual 'Carols By Candlelight' Service. About 200 people filled the Church to sing and take part in some hopefully not too challenging origami. It was good fun and the music group played the old carols with energy.

Still, I often wonder what the significance of the old carols is, singing, or in my case playing them year after year. But I realised recently that surely, this year more than ever, they should be of the greatest significance - 2000 years since the events they describe came about. As the carol says,

"In the dark streets shineth

The everlasting light;

The hopes and fears of all the years

Are met in thee tonight."

That is why I hope that some if not all of the folk that filled the Church that evening will have been touched by the words and the melodies. I also hope that amidst the parties and the celebrations people spared a thought for the very reason those parties were taking place. It would be strange would it not, to have a party where the person who caused it to take place was not even mentioned?

By Richard Gower



A thought from Speen Baptist Church

Commenting on the "Millennium Moment" a young person said, "I don't feel any different". So perhaps it is a good thing that our community's Millennium celebrations began part way through 1999 with the excellent 'Leaves of Time' pageant and will continue through this year, because it gives us plenty of time for reflection on all that has happened during the last 2000 years. An opportunity to look back as well as forward ... to consider why we are where we are and what we want for the future.

Perhaps your local church can play a small part in helping think through these questions of life as we try to make the message of Jesus understandable and accessible to all. I hope we are already making this possible for many people in the community with the Breakfasts, Time Out, Home Discussion groups and Sunday activities - but if there is something else that you think we could do, please give me a call on 488758.

FUND RAISING CHALLENGES

Christine Symondson leaves for Israel on 25th March for a 330km sponsored cycle ride through Israel, Jordan and Egypt. She will cover approximately 50 miles per day! (Phew) She is raising funds for the Queen Charlotte's Appeal which does research into infertility and other gynaecological conditions. She saw an advertisement in the W.I. green letter and thought "Why not?". Once she had challenged her friends Sue and Kate from Hampden, she realised she had to get into training.

The sponsorship money had to be collected prior to the event. Fund raising events, such as the ladies lunch at Hampden and the magnificent James Bond Casino Night, have brought her close to her target but she hopes to raise more than the specified £2,000.

Kate Slade has been running for years. Her application was accepted this year to run the London marathon. She is collecting for the Retinoblastoma Society which offers care and support for children and families who suffer from this wretched form of eye cancer. Sponsorship comes in the form of everyone pledging to pay a sum of money per mile or for the whole event.

There will be a sponsored children's fun run on 5th March dividing the age ranges into 5-7, 8-11 and over 12's. We have arranged a Spring lunch for the ladies at Hampden Village Hall on 17th March between 12 and 2pm (tickets £15.00). There will be posters and information, but if you would like to know more or can offer help in any way, please contact Christine on 488654, Kate on 488262, Suzi Rose on 488696

SPEEN Church of England (V.A.) FIRST SCHOOL Parent Teacher Association



Happy New Year to you all. Here is an update about events at the school, and forthcoming PTA activities.

Firstly, I would like to say a huge THANK YOU to Peter Symonds for his services as Chairman for the PTA for the last 3 years. His time and efforts are very much appreciated. The only problem is that someone who was that good, is a very tough act to follow, but I will endeavour to do my best! The new committee was voted in, back in October, and I was subsequently elected Chairperson. The first event, was the children's Christmas party, with a personal visit from Santa, games played and lots to eat. A good time was had by all.

It has also been decided to mark the Millennium by planting some trees and shrubs in the school grounds. This will be happening in the next month or so.

We have planned for the Magic Mirror Theatre Company to visit on 29th January, to present "Return to Wonderland". By the time you read this, I hope this will be another PTA success story!

There is going to be a Line Dance evening on 18th March 2000, at Hughenden Valley Village Hall. Ann and Brian Summers will be the instructors for the evening, together with a bar, raffle and a prize for the best dressed. It will be a super fun evening, so please come along. Tickets are priced at £7.50 each, and include a Chilli and baked potato supper. Please contact either myself, or Philippa on 488453.

The Summer Ball will be going ahead this year, hopefully on 10th June, but plans are yet to be finalised. There are quite a few other events in the pipeline, so keep your eyes peeled for the posters on the notice boards? Everyone is welcome to come to any of the events.

The PTA needs to raise money so that our village school not just survives, but absolutely thrives - so please support us!

Nicki Pitt Chairperson.(01494) 488713

Princes Risborough School Newsletter.

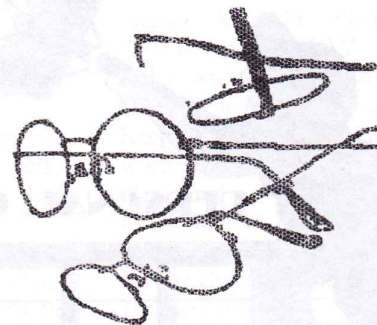
Dear parents and friends

Perhaps you have seen in the national press and heard on the radio that Princes Risborough school has achieved the status of being in the top 50 most improved schools in the country. When you consider that there are 3,560 secondary schools in the country, you will appreciate the significance of this tremendous accomplishment. I know that I have often commented on how dedicated and hard-working the teachers are, and this is indeed proof of their skills. I would also like to thank Governors and parents of their support, which ensures that students reach their potential.

A number of sixth form students are currently making their applications to University, and following their mock examinations and G. N. V. Q. course reports, the future is looking highly encouraging. Sixth form course prospectuses will be available from the start of the spring term.

Sincerely G. Hartle, Headteacher.

TAKE A NEW LOOK



PETER F. BOOTH

OPTOMETRIST

120 Station Road
Chinnor

Tel: 01844 351564

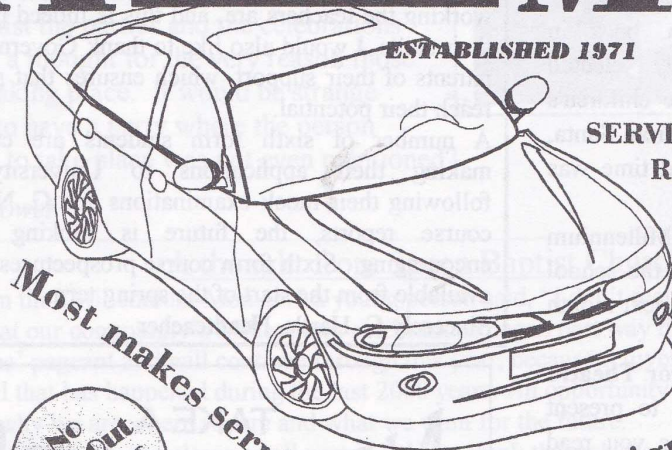
**THE GARAGE THAT
COMES TO YOU**

All areas within 35 miles of High Wycombe

VEHICLE TECHNICIANS

AUTOS - MOBILE

ESTABLISHED 1971



Most makes serviced, British & Foreign

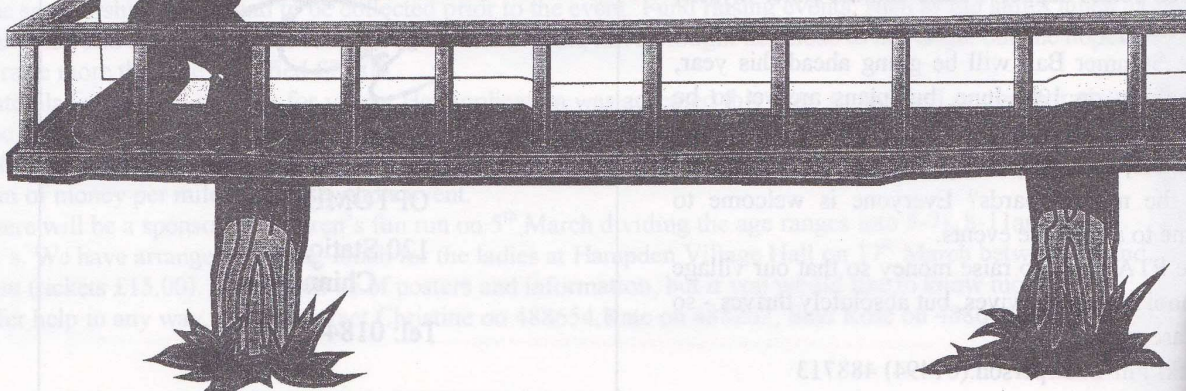
**No
Call Out
Charges**

**SERVICING
REPAIRS
BRAKES
CLUTCHES
FUEL INJECTION
ELECTRONIC IGNITION**

Call
Bob Wheeler
 or 
01 494 564090

0836 673441

PERSONAL, COMPETENT AND FRIENDLY SERVICE



SPEEN PLAYING FIELD ASSOCIATION

SPFA is a registered charity, regulated by the Charities Commission, and run by a Committee of Trustees whose responsibility is the maintenance of the Playing Field for the benefit of the Village. The Committee meets regularly and holds an open Annual General Meeting in March. Date to be published on village notice boards.

The Parish Council provides an annual grant towards the maintenance costs, but the Association is largely funded by events and the bi-weekly Draw, organised by Peter Collett assisted by collectors. These funds cover the costs of insurance and maintenance. Any surplus is put towards improvements. In recent years these include the provision of the under 5's area, replacement of the garage housing the tractor, application of preservative to the Pavilion and construction of the Patio. The committee is arranging the purchase of new litter bins and seating on the field, and are looking at the provision of further facilities, including erection of a basketball hoop, kindly donated.

The tennis club indicated in a newsletter circulated last year, that they would like to extend the tennis facilities to a second court. The committee discussed this at the time, and, based on the usage of the court this summer, were not convinced this was warranted. However, the committee is charged with management of the field for the benefit of the whole village with a long-term view. Currently a long-term plan is being formulated and we would like the input of as many villagers as possible.

Comments please in writing to: Marion Tozer, Mapledene, Cornerways, Speen.

Who are the Committee?

Keith Jones (Chairman), Roger Anderson (Treasurer), Marion Tozer (Secretary),

Pat Anderson, Roger Clarke, Mary Craft, Jenny Cowan, Sheila Tidball, Chris Walsh.

Preschool Rep.

BONFIRE NIGHT

To say this evening went with a 'Bang' is an understatement. It was probably our best ever firework display, which lasted over 25 minutes, with one spectacular explosion of colour and reverberating one boom after another. It was the finale to an evening where the Guy Competition attracted numerous excellent entries. The winning entry, from Bianca and Craig Litchfield collected the £10 prize voucher. The huge Bonfire illuminated the sky and provided a backdrop for activities centred at the Pavilion and the patio area. A BBQ'd Hot Dog and Soup were served to all with many people coming back for seconds or even thirds. Mulled wine was also available, provided by Sharon and David, from Speen Stores, adding an additional 'Glow' to the evening for many.

Many thanks to all those who helped, far too many to list here, but they know who they are!

However, special mentions to Keith Jones and Roger Anderson who constructed the Bonfire and produced such a fine firework display.

Marion Tozer

THE HIDDEN DANGER -DOG FOULING.

Everyone is aware of the unpleasant experience of encountering a 'canine calling card'.

Whilst most dog owners are very responsible and take measures to prevent fouling of the by ways in our Village and do not use the playing field to exercise their pets, the playing field has had some unwanted donations.

The field is covered under 1996 Dog Fouling of Land Act which permits fines up to £1000 to be served on those allowing dogs to foul such public areas. Signs at either end of the field designate the field a 'NO GO' area for dogs. However 'DOGS CAN'T READ', so we must rely on owners keeping their pets on a lead or within the boundaries of their own property and not allow them to wander on to the field.

Why? Toxocara canis is a potential hidden health hazard.

Toxocara canis is a parasitic Roundworm carried by dogs, but also found in foxes and cats. It is reported to be present in 100% of new born puppies, 50-100% pregnant or lactating bitches and about 5 % on the dog population as a whole after a programme of regular worming.

Eggs passed in the faeces require two weeks in a suitable environment to develop into an infective state. Therefore, there is no risk to owners who clear up after their pets immediately. The eggs are resistant to freezing and are not killed by disinfectants, they remain in the soil for up to two years.

When a person (usually a child) ingests the eggs, symptoms may subsequently appear but may go unnoticed eg. fever, wheezy chest, abdominal pain. Symptoms may be more severe with liver enlargement, asthma and epilepsy.

In about 2 - 3 % of cases a quiescent state occurs. The Ocular form of the disease where the larvae migrate and become trapped in the eye, is rare and occurs in about 100 people per year in the UK, usually in children 6 - 12 years old. A variety of eye problems including blindness may result.

With this in mind:

PLEASE KEEP OUR PLAYING FIELD A SAFE PLACE FOR CHILDREN TO PLAY.

Keep Dogs under control, do not allow them to wander freely.

Keep Dogs and Cats regularly wormed, your Vet will offer advice if required.

Place litter in bins on the field to reduce the attraction to foxes.

Ensure children wash their hands.

By Marion Tozer

A volunteer is required to collect subscriptions from members in the Chapel Hill area. Collections are made annually from members homes.

If anyone can help Please contact Peter Collett 01494 488348



**Hairstyling for all the family
Plus**

**Beauty treatments including
Manicures, Pedicures, Facials, Waxing
Make up, Eyelash/Brow Tinting/Shaping
Nail Extensions, Nailart, Self Tanning
Swedish/Slimmers/Aroma Massages
Indian Head Massage, Body Elixir
Renewing Body Scrub**

~

**Hair & Beauty combination packages available
Friendly advice given anytime**

~

**Situated above Speen Stores,
Speen**

Tel. 01494 488899

An update from Paul Rogerson – your local Wycombe District Councillor

Firstly I would like to take this opportunity to wish you all a happy and prosperous new year.

This coming year will start to see the promises made at the election being implemented and I am pleased to say that the changes in policy have so far favoured the village community.

The Local Plan - The first major change in policy has seen a reduction in the number of houses proposed by the emerging Local Plan for Princes Risborough from 650 to 300. This change will have a significant effect on the projected traffic flows for the area and should mean that increases in traffic flow through Lacey Green and Loosely Row are reduced. Support for the new proposal is key as the final hurdle of the Government Inquiry has still to be cleared.

Large Scale Voluntary Transfer of Housing Stock - This is the most significant change to policy for many years and at present is in its fledgling stage. If successful it will transform the way Wycombe District can deliver on housing and other major projects. The proposal is to create a Council sponsored non-profit making company to manage the housing stock. This company, unlike the Council, will be able to raise money independently for building and maintenance work. In addition it will not be subject to the same rules governing housing benefit and will therefore not have to pay back to the Government monies collected for benefit. This means that both tenants and council

will benefit. The tenants will benefit by having places on the board, by strictly controlled rent increases and more money available to be spent on housing; the Council will benefit with funds to spend on major projects - An all round good deal.

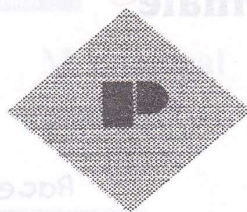
The next major item is to complete our review of the Transportation Plan that includes Park & Ride. My view is that Park and Ride will not have a significant impact on the reduction of congestion mainly due to the high volumes of traffic passing through the centre of the town. We have already seen the difficulties caused to peak traffic flow on the London Road by the Bus Lane.

On a local note traffic calming for Main Road, Lacey Green, has been on the agenda for several months and I have raised the matter with both the Parish Council and the County Council. As a first step I hope that all those who took up the 'Pledges' are honouring their commitment and that this has resulted in some reduction in the traffic speed in the village.

As I mentioned in the last issue I have contacted Bucks Housing to discuss improvements to Speen Stores parking. So far the response has been encouraging with Bucks Housing, the County, District and Parish Councils all taking a positive view.

If you have a view on any of the issues raised by this article or you have a query concerning Wycombe District Council please contact me and I will do what I can to help. (01494 488315)

Paul Rogerson



PARTRIDGE & CO.

Chartered Certified Accountants

**The Gables, Market Square, Princes Risborough,
Buckinghamshire, HP27 0AN**

Tel: 01844- 343900; Fax 01844-343903

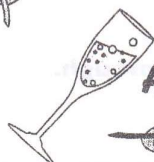
E-mail:accounts@partridgeandco.i-way.co.uk

Are you fed up dealing with Inland Revenue Self-Assessment Returns?

Why not speak to Richard Partridge and let him provide a Full Tax Return Service for you. We have the market leading professional Tax Return software designed for all types of personal and company tax returns.

As Registered Auditors and Business Advisors, we specialise in providing a highly personal service to owner-managed companies, trades and personal tax clients, covering all aspects of business accounting and taxation.

NB: We have now moved to offices in the Market Square Princes Risborough.



SPEEN VILLAGE



A
Special Date
for Your
Diary!
Saturday
8th July

Featuring:
"The Leaves of Time" Finale

Competitions

Displays

Juggling

Dancing

Music

Art Exhibition

Races

Magic

Rides

Stalls

Games



ALL THE USUAL FUN AND LOTS MORE TO CELEBRATE THIS SPECIAL YEAR!



D.J.Coles

Property Maintenance and Improvement

- * Painting & Decorating
- * Fitted Kitchens & Bedrooms
- * Carpentry
- * Loft Insulations & Boarding
- * Fence & Shed Erections
- * Gutter Clearing & Replacement
- * Garden Maintenance



No Job Too Small



Tel: 01494 816282

Mob: 0797 9018174

MARJORIE STOCKLEY A.G.S.M., Gold Medal L.A.M.
 Graduate of the Guildhall School of Music & Drama
 Member of the Society of Speech & Drama Teachers

SPEECH & DRAMA TUITION

Acting Technique
 Audition/Interview Technique
 Interpersonal Effectiveness
 Public Speaking
 Remedial Speech
 Voice Production
 London College grade examination entry

Tuition Fees: Initial Consultation - £5.00
 Individual Session - £10.00

*Driftway House
 Coleheath Bottom
 Speen
 Bucks HP27 0SZ
 Tel. No: 01494 488101
 E-mail: mastock@globalnet.co.uk*



VEHICLE TESTING STATION

COLES & BLACKWELL

ACCIDENT REPAIR & SERVICING SPECIALISTS

Walters Ash, High Wycombe, Bucks HP14 4UX

Opposite the Bradenham Hill Top Junction



MOTOR VEHICLE REPAIRERS ASSOCIATION

Mechanical

Monday to Friday
 8.00 - 5.30

Saturday 8.30 - 12.30



FREE ESTIMATES

01494 563102

Established 1959

Our reputation
is your
guarantee

- ❖ All makes of cars serviced
Please phone for details
- ❖ Breakdown & Mechanical repairs
- ❖ Crypton tuning and diagnostics
- ❖ Tyres all makes, low prices
- ❖ MOT Testing & free re-test
- ❖ Brakes & Clutches
- ❖ Exhausts & Batteries

Bodywork



- ❖ Insurance & private accident repairs - free 'R' Reg loan cars
- ❖ Approved by all leading insurance companies
- ❖ Chassis repairs on alignment jig
- ❖ Windscreens
- ❖ High gloss paintwork in our low bake oven
- ❖ Welding




MILLENNIUM CELEBRATIONS

The drizzle did not dampen the SPFA Millennium celebration as crowds gathered on the field to see the bonfire lit. As the hour approached Big Ben's midnight gongs, amplified over the PA system, heralded a volley of ear splitting explosions, and an aerial display which illuminated the sky with a cascade of colour and shattered the peace for over six minutes. Afterwards, some retreated to the Marquee kindly lent and erected by the Scouts and Guides for the occasion. Further popping of champagne corks and toasts to the New Year, Decade, Century, Millennium etc, all to the accompaniment of lively music. A jolly time was had by all! Thanks from everyone to Keith Jones for his hard work and sobriety during this evening of festivities. SPFA are grateful for the funding of this event by the Millennium Committee, the King William IV Restaurant and numerous private donations. Happy New Year to you all from SPFA. We appreciate your help and support in keeping the Playing Field a pleasant amenity, run by villagers for all villagers to enjoy.

FUN DAY 2000

Planned for Sunday 18th June 2000

We are looking for Sponsorship for a Bouncy Castle, a Punch and Judy show, hire of a small Marquee. Raffle prizes or any other offers of help. In addition, any advertisements for the programme would be gratefully received.

Please contact : Marion Tozer, 488097 Keith Jones 488038 or a member of the committee for further details.

MY VISIT TO THE MILLENNIUM DOME ON THE OPENING NIGHT

I went to the Dome on the opening night (which was my 10th birthday), thanks to Capital Radio. My mum nominated me and I got four tickets. I invited Rebecca McClaughry, and I also took my nanny, Zoe Hunter, and she is 18.

When we got there, we went to The Body first, it was really cool. Then we went to a place where a machine told you how you would look in 15 years time but the queue was too long.

We went and had tea after that, and then we went to a show, it was amazing!! Everyone had beautiful costumes on.

After the show, everyone was exhausted so we went back to the car by the quickest way, a POLICE VAN!!! When we got off I was given a police hat which has brought me one step closer to my dream of being a police officer. Oh and a few other things I shook Tony Blair's hand and we saw William Hague standing in the pouring rain waiting for a bus!!!!

By Olivia Wheeler-Robinson

ON 1 i 2000(Picture Front Page)

At 7.15am, I met 22 friends in the courtyard at Pigotts while it was still completely dark - and some of them had been playing the Brandenburg concertos only four hours before!

Warmly clad and well shod we set off northward towards Speen, just able to make out whom we were walking with. As we passed Little Pigotts, the first light was spreading along the horizon and looking down the valley towards North Dean it was misty, mysterious and monochrome, the hilltop clear above, the sky grey, the houses shrouded and dark.

Walking down to Speen we could just see that grass was green and as we climbed up through the churchyard we greeted a lone early riser. "Quiet past the houses!" - as we cut through to the hilltop, going over stile after stile under the slowly brightening sky. We followed the footpath going through the beautiful valley below Courns Wood and rejoined the road by the North Dean Village Hall. Straight back up to Pigotts? Unanimously no, so we walked on down right through North Dean, wishing a happy millennium to a couple of cyclists, then left across the fields and up.

As we approached Pigotts Wood we paused to look back over Hughenden Valley, still and silent under the mist lit by the first direct rays of the sun - translucent, transitory and breathtakingly beautiful ... This is how the millennium dawned for me - before we all went back through the wood to breakfast, other friends and more music!

By Nick Wheeler-Robinson, Pigotts.

Green Man in the Leaves of Time

Following the pageant, this extract from a leaflet "Green Man In Exeter Cathedral by Clive Hicks may be of interest to those who live in the wooded Chilterns.

"Green Man " is the designation applied to a representation of a (male) face associated with foliage. This type of carving is evidently late Roman in origin, though it may have originated earlier in the time of the Druids but such carvings perished due to soft unseasoned wood or human destruction.

The idea of a tree – man directly associated with Nature is pre – Christian. Often in humanity's past the divinity was feminine, the mother of the world, who bore a half – divine son. He grew to be her protector and consort but then died, to be born again in the cycle of nature, the seasons of the year. The parallels with the story of Christ are obvious and merged into Medieval Christian imagery forming part of its background symbolism. In 1939 Lady Raglan wrote suggesting, but not proving, some relation of the Green Man of church imagery to inn names, May folk customs, Robin Hood and the Tale of the Green Knight. All relate to the idea that humanity is not separate from nature.

This concept is very much in tune with the current desire now to preserve green and pleasant land in the face of the spread of urban sprawl. Despite the many advantages of town life, a land of concrete devoid of life other than people would be singularly dismal.

Francis Caldwell.

"Green Men – the archetype of our Oneness with the Earth" by William Anderson and illustrated by Clive Hicks was published by Harper Collins in 1991 and republished by Compassbooks in 1998

MUSICAL WINTERMONTHS *Please see drawing Page 19.*

In most winter months on a Sunday at 7.48pm there is a musical evening in the "Singing Barn" at Pigotts. An hour of music is followed by wine. The invited audience (invitations are not difficult to get – ring me!) numbers between 50 and 125 and unusually on December 19 our invited performers came from that audience to make a Midwinter Miscellany! Each performer had five minutes only and with 12 performers we had an excellent hour +. The range was remarkable –duets of flutes, recorders and violas; cello and piano; violin and piano improvisation; solo piano and two baritone songs, with verse and prose readings, a music therapy case described and two slide presentations –and remarkably the great majority of the performers at this "7.48" came from North Dean with one from Speen. Five artists displayed some work and despite it being snowy and our steep hill there was a good audience.

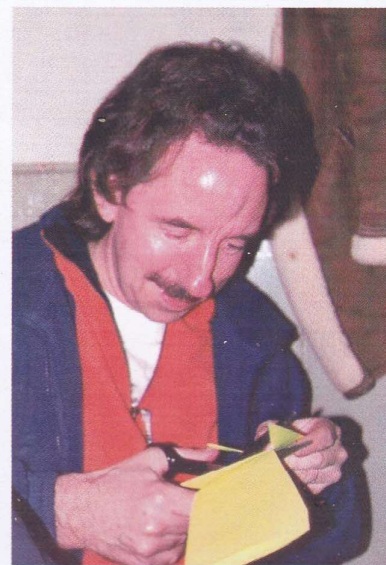
By Nick Wheeler-Robinson



North Dean's knome merrily working
At The Ladies Breakfast



"It's really hard cutting out
these stars Andy!"



Speen Carol Singers raised £125 for the Ovarian Cancer Research.
Thank you for your donations



The Millennium Feast was a very good night for all who attended.
Above : Reg & Sue Taylor and Barbara & Barry Pennie. Right. June Black in those glasses

**Millennium
Bonfire.
Thanks to the
Playing Field
Ass.
And Keith Jones
and friends.**



**No comment!
From Di
Rainbow and
Sheila Tidball?**

**The
Symondsons
Enjoying their
sparklers**



**Sketch drawn of a performance
in the Singing Barn,
Pigotts**

THE OLD PLOW RESTAURANT AND BISTRO

A selection of dishes from the current restaurant and bistro menus: -

STARTERS

Smoked French chicken, Bang Bang Thai style peanut and cashew dressing
Lobster and shellfish bisque with cream and brandy
Goat's cheese with char-grilled Italian style vegetable salad, Balsamic, olive oil dressing
Grilled foie gras with mango salad, seed mustard dressing
Gravadlax of Scotch salmon with oriental dressing
Carpachio of courgettes, sweet anchovies, olives, Parmesan and rocket salad
Parma ham with fresh figs, Balsamic dressing
½ Mediterranean prawns with Marie Rose sauce
Cured Bresaola with char-grilled artichoke, shaved Parmesan, olives, lemon and olive oil
Smoked salmon, fresh Devon crab and prawns with lemon and chive mayonnaise

MAINS

Roasted best end of prime English lamb with apricot, mango and mint chutney
Coq au Vin of baby chicken with button mushrooms, baby onions, lardons and red wine sauce
French magret of duck with spiced red cabbage
Grilled veal cutlet with a cream and wild mushroom sauce
Grilled fillet of saddle of wild venison, redcurrant sauce, venison sausage, beetroot, olive oil and rosemary
Aberdeen Angus rib eye steak on the bone, with shallot sauce and anchovies
Grilled black pudding with caramelised apple, chestnuts and seed mustard sauce
Linguine pasta with Devon crab, prawns, saffron and cream
Grilled Devon scallops and bacon with chive, lemon butter and tomato sauce
Cassoulet of fish and shellfish
Filleted, wild seabass with sun-dried tomatoes, roasted artichokes, olive oil and lemon

DESSERTS

Tiramisu with toffee sauce
Cassis mousse with a raspberry and vanilla sauce
Lemon brulee tartlet with a vanilla sauce
Dark chocolate rum truffle cake with Brandy sauce
Warm mulled wine pudding, red berries and dark rum sauce
French apple tart with vanilla ice-cream
Farmhouse cheese platter with grapes, walnuts, celery and wheat wafers
Farmhouse Stilton with Cox's Orange Pippins, celery walnuts
All dishes are subject to availability

For opening times and details of our conference, party and wedding facilities,
please telephone 01494 488300 and ask for Mrs Cowan.



Speen W.I.

At the October meeting of Speen WI, members heard that the recent Coffee Morning had raised £215 for the Macmillan Nurses. Thanks were given to Marjorie Stockley for organising this very successful event. The Village Quiz took place on October 15th when WI will be entering a team to compete with all the other organisations from the Village. Gwen and John Bishop then gave an entertaining account of their meeting with a Russian Sweet Pea enthusiast and they delighted members with their lovely slides taken on their subsequent visits to Moscow and St Petersburg.

Nominations for next year's committee were taken ready for the Annual Meeting in November when Voluntary County Organiser Mrs Button would attend. There was a Pot Luck Supper with Members asked to bring a contribution to the buffet table.

Joy Button, VCO, was at the Annual Meeting of Speen WI in November. The treasurer, Joy Davies reported on a successful year with money being spent on making meetings enjoyable and informative for members and visitors. Secretary Glenn Hart then reminded everyone of the very wide range of speakers and activities which members had enjoyed. The variety on offer either through the Village group or the County Federation is quite amazing and makes WI membership excellent value for money. President Wendy White was chairing her last meeting after three years in office and thanked everyone for their help and support in making it such a

happy time. She was thanked and presented with a farewell gift.

After a delicious pot-luck supper, the new committee was announced and Joy Davies agreed to take over as President for the coming year. Mary Dawson will be the new Secretary.

After a short business session at the December meeting of Speen WI, President Joy Davis introduced Mary Uglov who had been invited to share her interest in 'All that Jazz'. Starting as an interest during her student days, Mary has now become a jazz enthusiast and she shared her considerable knowledge of the development of this varied music form from its earliest beginnings in New Orleans to its present day status as a world wide music style. With carefully selected clips from a broad spectrum of styles the talk was both informative and very entertaining.

Members were reminded of the Carol singing to raise funds for the Ovarian Cancer Research Appeal on December 15th. The January meeting will be a discussion group and social time at which it is hoped to begin plans for events in 2000.

The January meeting was given over to a planning and discussion forum where ideas for the future of the WI in the new millennium were shared and plans made.

The February meeting will take a look at egg decorating in the Faberge style and members are asked to bring along a decorated egg that can be in any style - and not necessarily decorated by the member herself! It is also hoped that a good selection of February

flowers will adorn the bloom of the month table.

New diaries were soon being filled with information about future events which include a Jazz evening in the Village Hall on January 29th and the initial round of the WI quiz at Little Missenden on March 23rd. Speen Millennium choir will be putting on another performance on the 8th and 9th of February and outings are planned to the Mill at Sonning, the 'Rain Forest' experience near Newbury and an Evening at Beatties in Aylesbury. Details of any of these events are available from the secretary.

After the excellent attendance at this first meeting of the year it is hoped that Speen WI is all set for another outstanding year.

The WI Millennium Feast Report. Is on Page 22

Thursday 2nd March

Islands around Britain.

Mrs. B. Hylbert.

Comp. Six items for a desert Island.

Bloom of the month

Thursday 6th April

Birthday Party

Bloom of the month

Thursday 4th May

Resolutions Meeting

Quiz.

Bloom of the month

Thursday 1st June.

Helga - My Autobiography

Mrs. H. Gerhardt

Comp. My favourite Recipe.

Bloom of the month

Thursday 6th July

Blue Cross Charity

Ms. A. Rowan

Comp. Favourite Pet Photo.

Bloom of the month

Millennium Feast



So someone said over a year ago, "Why don't we book the Village Hall for 31st December 1999 and plan an appropriate celebration?" Why not? We all agreed - the deed was done. The seed had been sown and so now we had to make our grand plan for a Millennium Feast!

A committee of W.I. members was formed and gradually over the months that followed menus were discussed and other decisions were made to make it a memorable evening for everyone. By this time we had all heard amazing stories of the cost of some celebrations that were being planned and we couldn't help feeling that it was all going to be so civilised being part of a village celebration that meant we could really celebrate without the worry of driving. After several meetings our plans were in place and we all looked forward to a special evening.

We decorated the Hall and set the tables and all the food and drink was prepared. We donned our party clothes and met in the Village Hall which was transformed into a room of celebration! We had all worked so hard to make the evening a success and now we were going to celebrate

and enjoy ourselves and we certainly did!

The music came from all periods of our century. Thanks to David King for organising it all. Also, a special feature of the evening was a TV picture projected on the back wall of the Hall so that we could be part of the celebrations from further afield. It was really wonderful seeing images of the spectacular firework display of the Eiffel Tower and of other venues around the world and of our own River Thames projected on the wall of our own Village Hall thanks to the hard work of Reg Taylor.

We raised our glasses of champagne and drank to a New Year, a New Century and a New Millennium! - and felt very happy to be part of another Speen Memory!

By Loiz Bale

NEWS FROM SPEEN TENNIS COMMITTEE

Those warm, hazy days of summer seem a long way away, but Speen Tennis Committee has been busier than usual this winter looking at ways of increasing the level of interest in tennis in the village.

Last year the tennis coaching by Sandra Heffron was more popular than ever, the number of groups doubled. Over fifty children were enjoying the benefits of coaching on their doorstep and for many the results of the last few year's coaching is really beginning to show! The ladies' groups have also been extremely successful and the momentum is being maintained through the winter at the Wycombe Indoor Centre which bodes well for a great season next summer.

In November all members were invited to a talk by Lynn Moxon from the Bucks LTA about the pros and cons of becoming an affiliated member of the LTA. She gave us plenty of food for thought which will be discussed further at our next Committee meeting.

We shall be holding our AGM on Tuesday 28th March in the Playing Field pavilion and then we are planning to start the season with an Open Day on Sunday 30th April (May Day weekend - put it in your diary). It will be a great opportunity to meet up with friends, as well as meet new members - refreshments will be served. We also hope to run a tennis tournament over the Speen Family Fun Day weekend and a social Sunday to round off the season in September.

We shall be writing to all members with further details of events but do look out for our new, larger noticeboard up at the tennis court which will help us keep you in touch with events as they are planned.

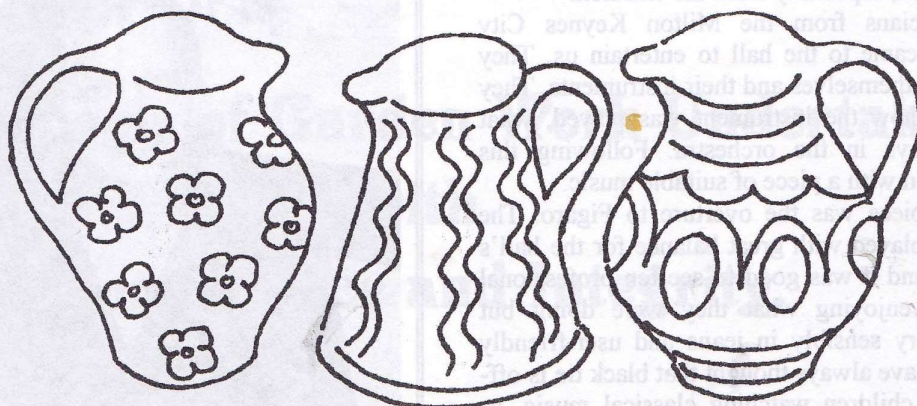
If you are interested in finding out more about tennis in Speen please contact Cherry Seekins on 488355.

SPEEN POTTERY

Tel: (01494) 488 206

DECORATIVE EARTHENWARE

by Tessa Rubbra



The track leading to SPEEN POTTERY runs down a lovely secluded valley just outside the village of Speen. The Pottery and Showroom is part of an old cottage with a delightful garden. There is parking space at the pottery.

On display in the showroom are examples of beautifully coloured and fine tableware. Special Commemorative Plates and Bowls can also be made for Wedding Presents, Anniversaries and other occasions that need to be remembered.

The Pottery is open every day, but if you want to see Tessa to discuss an order it would be advisable to ring before coming.

Tessa holds pottery classes in her workshop for groups of 3 people, mornings or evenings. Ring for more details 01494 488 206

Valley Cottage, Highwood Bottom, Speen Bucks. HP27 OPY

MAGIC MUSIC BOX

Did you really miss the super concert on 30th October in the village hall?

The hall wasn't full, and although it was for adults and children, there were only three children there. All the other children in the village missed a musical treat. There are not many opportunities for anyone to get really close to musicians playing. The musicians were obviously enjoying themselves, and they encouraged comment and participation, especially from the children.

Ten musicians from the Milton Keynes City Orchestra came to the hall to entertain us. They introduced themselves and their instruments. They explained how the instrument was played, what part it plays in the orchestra. Following this introduction with a piece of suitable music.

The first piece was the overture to Figaro. The ensemble played with great balance for the hall's acoustics and it was good to see ten professional musicians enjoying what they were doing but dressed very sensibly in jeans and user-friendly clothes. I have always thought that black tie is off-putting to children watching classical music, as they may not be used to formal dress. This was an evening to get to like what you saw and heard.

The group was made up of two violins, a viola, cello, bass, bassoon/ oboe, flute, clarinet, French horn, and hose pipe. The musicians were of different ages, and had different styles of talking about what they were playing. We had some of St. Paul's Suite by Holst and then some reels. The next item was to get us to sing a round of Frere Jaques in four groups. I enjoyed it but the people around me may not have done so.

The second half of the evening started with a stirring rendition of "Match of the Day" theme followed by "What shall we do with the drunken sailor" by Malcolm Arnold.

We were then shown how to play the hose pipe. This was the same length as the French horn and you could play it with a mouthpiece in one end, and a funnel at the other. The children in the hall were encouraged to examine this and to feel the vibrations, similar to those made by a bow on a stringed instrument. I feel sure some of the children there will now feel much more confident in the trying musical instruments and the hope is that they will want to learn an instrument when they are a little older.

The evening is part of a series of entertainments which are part of a two year programme of community music activity funded by the National Lottery's "Art for Everyone" scheme. It would

have been nice to have had a full hall for the Magic Music Box but hopefully they will not be put off coming to Speen again and giving those who attend a delightful and fun evening.

by Glenn Hart.



BBONT Wildlife

ZAMBEZI SAFARI

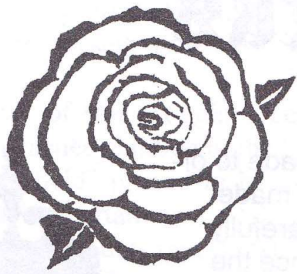
A CLOSER LOOK AT THE
WILDLIFE AND LANDSCAPES OF
ZIMBABWE AND BOTSWANA

by
Peter Symonds of Speen

7.45 pm Tuesday 24 March 2000
Great Missenden Memorial Centre

Non-members welcome

Any enquires: Tel: 488016



**CHILTERN
MEADOWS**

**All Aspects of Garden Work Undertaken
with
Competence and Integrity.**

*Specialists in Full maintenance Contracts
to the Private and Commercial Sectors*

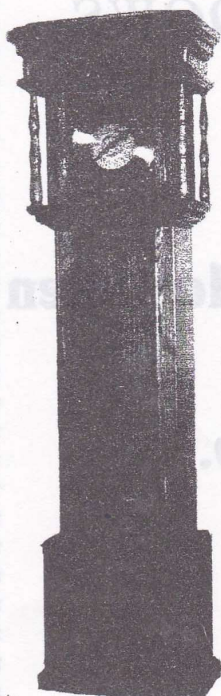
Work providers to Hampden Hall Horticultural College
References available.

CHILTERN MEADOWS

33 Meadowcroft
Aylesbury
Bucks HP19 3LN.
TEL: 0956 599266

"Our Business is Growing"

PGM Clocks



PGM clocks are individually hand made to order in traditional styles. Each one is made from solid oak using wood that is carefully chosen for its grain pattern to enhance the overall beauty of the clock.

The cases are given an oiled finish followed by hand waxing; this takes several days, but it results in a beautiful, deep, lustrous sheen that enhances the beauty of the oak grain and can only be achieved by hand. Finally, the cases are fitted with high quality German eight-day movements and brass dials.

Each clock, being hand made, will vary in detail within the overall style; therefore, your clock would not be one of a limited edition – it would be the **only one!**

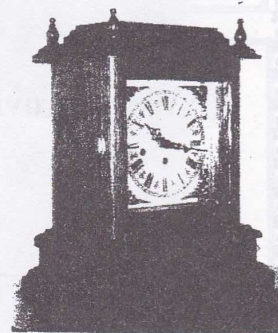
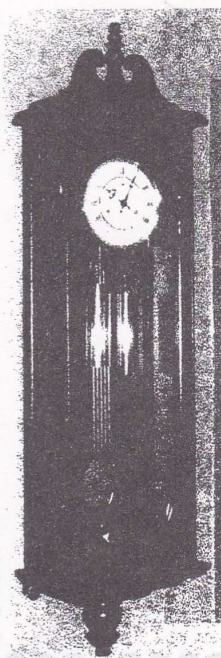
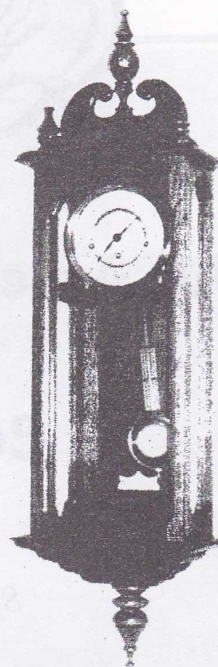
These clocks should last for several generations if properly cared for; they are not just timepieces and beautiful pieces of furniture, but future family heirlooms.

For more details and colour photographs visit the website [at:](http://www.pgmclocks.co.uk)

www.pgmclocks.co.uk

Or telephone:

Speen (01494) 488422



Speen Jubilee Memorial Playing Field Annual Report for the year 1939

Ladies and Gentlemen:

Despite the very difficult times we are once again able to present is a very satisfactory report.

The outbreak of war brought a considerable number of evacuee children to the locality and the "Playing field" proved to be of immense value for their entertainment.

A study of the accounts reveal that the income was £48. 19s.01/2d. and our expenditure - including depreciation, £41. 11s. 11d a surplus of income over expenditure of £7. 7s. 1 1/2d.

The chief sources of revenue were-profit from sale of land £44.15s. 6d and £3. 2s.61/2d being profits from a whist drive dance. The land sale was very difficult to arrange and our best thanks are due to our Chairman for the efficient and speedy in which he arranged and brought to a successful conclusion the negotiations. The result of this transaction gave great satisfaction to the committee of the "Playing Field" and also to the purchaser. The sale has not diminished the area of the field available for the public use.

The outstanding item of expenditure was £32. 10s 0d for loan redemption - a like amount is now outstanding - so that of the total of £130. raised in 1935, when the plan to provide the "Playing field was approved £97. 10s has now been redeemed.

Maintenance costs were again low, the actual cost being £2. 12s - of this amount £1. 7s was 50% running cost of the motor mower and the other 50% been borne by the Cricket Club.

Our land and property assets now stand at £212. 7s. 10d and in addition we have cash in hand at and at bank totalling £33. 13s. 9d; our total assets therefore are £246. 1s. 7d and our liabilities £32. 15s. 4d. making a balance of assets over liabilities of £213. 6s. 3d. as compared with £173. 9s 1 1/2d in 1938.

Ambitious plans for remodelling the tennis court and for motor rolling the Field did not materialise owing to the dry season and the series of international situations had a braking effect on our activities.

An application was received from ARP authorities to earmarked the frontage portion

of the "Playing Field" for the digging of air raid shelter trenches. This matter was referred to Messrs Simmonds breweries as we have only the right of entry over this part of the "Field".

The advent of the war has emphasised the foresight in providing the "Playing Field" and may well prove in the days to come of even greater value.

The committee desire to place on record their thanks and appreciation to all who have supported the enterprise during the past year and asks for your old continued interest and support.

Provided by Bob Johnston



On Sunday 14th November 1999 there was a service of Remembrance at Speen Chapel. Part of the service was conducted at the war memorial in the lytch gate. Don White chairman of Lacey Green Parish Council unveiled a plaque to commemorate the return of all who took part in the Second World War "No lives were lost".

The memorial to the First World War has also been repaired. Wreaths were laid by Don White and Mr. Doug. Redrup. Passages of the Bible were read by Paul Rogerson, Ben Gower, and Laura Page. The service was continued in the chapel by Andy Gower.

It was, as it often is, a chill, wet and miserable morning entirely suitable for Remembrance Sunday.

By Glenn Hart

TWO DAYS IN THE LIFE OF THE VILLAGE HALL

Villagers all over the country spend their time setting up and clearing away events in their village hall. As one who holds a large fund-raising event every year, I have seen the insides of many a village hall. Speen Village Hall is as busy as a hall can be as I saw for myself between November 12th and 13th.

On the Friday morning, like every weekday from 9 - 12, 18 youngsters ranging from 3-4½ years of age transformed an empty hall into a busy, noisy, happy room, enjoying a variety of activities with their pals, including painting and crafts, a sandpit, and a book corner to be read to. The older children are given opportunities to write letters and numbers prior to starting school the following term. This is an excellent introduction into social interaction as children learn they have to share to get on in life as well as communicating in a play environment prior to the serious business of school. Two mornings a week, the children can stay for lunch which parents provide.

Speen Pre-school, run by Kay Morgan is staffed by trained mums in a ratio of usually 1:4 or 5 with each member of staff responsible for a number of individual children. The time is structured into two sessions with crafts before milk and biscuits, then puzzles and games after. November half term's educational theme was opposites. The walls were hung with pictures of animals from hot countries as opposed to those from cold. The children were to visit Odd's Farm for their term's outing later that month.

In the afternoon, I joined Marjorie Stockley to prepare a now pristine and empty hall for the evening's concert. There are enough tables and chairs to seat 70 (which is a full house) with plenty of, crockery and cutlery. Marjorie provided her own table-clothes and floral decorations. I returned that evening to find the choir plus guest singers and Gwen at the piano waiting in their finery as the hall filled with the audience. Martin has detailed separately the events of that evening. I

joined Jean Baines in the kitchen as chef's assistant. Having washed up for what seemed like a week, we left the hall clean with tables ready for the next event.

The men from Chapel were in early the following day, setting up for a full English breakfast for 55 ladies. Apart from meeting with friends we don't see all the time, the breakfasts are always superb and the speakers thought provoking. On this occasion we heard from Di Naden, a lady who lives her life to the full in Ghana, where she and her husband have lived for approximately 30 years translating bibles for Wycliffe Bible Translations. As a committed Christian she shared some interesting and moving moments in her life. We leave the hall on these occasions with full tummies and fully-charged emotions.

Most of us only left the hall for a moment, while the men cleared up, before returning with armfuls of toys and games in preparation of the Monster Toy Sale, organized by Kate Slade. Apart from raising funds for a scheme in India, Kate thought that as we approached Christmas, our children could focus on giving to others. Everyone in the village really took this to their hearts and for weeks leading up to this time Kate's garage was flooded with all kinds of goodies. Interestingly, many of the children found it quite hard to part with some of their fluffy friends and games - I suspect that some were bought back and gather dust on a shelf as before! This was another event where everyone made cakes -and bought them back again. It was fairly well attended and although plenty was sold there was a good deal left over. Kate was delighted to announce that we raised over £425 which will go towards the Zion Fellowship fund in Hyderabad.

Having set up and run the refreshments for most of the afternoon, I missed the clearing up. I returned at 5ish to check nothing was left to find two ladies preparing for a children's disco and birthday party. Once again, that night, the village hall would be filled with bustle and noise and happiness.

By Suzi Rose

PARISH AND LOCAL COUNCIL NOTICES

PREPARING FOR YOUR LIFE TOGETHER A NOTICE FROM AYLESBURY VALE AND CHILTERN RELATE

At last the date has been set, the church and reception booked. The house is full of magazines with suggestions of how to make this your special day. Travel brochures are scanned for the perfect location to where to retreat after the celebrations are over. There is so much to do, it is all so hectic and easy to get carried along with the excitement.

When you come home from your honeymoon and return to work, the glamour of your wedding day may seem a long way in the distance. No-one told you it would be like this, job commitments, long hours, arguments over who does the shopping, cleans the house and so on.

The wedding day, is important, but it is only the beginning. What happens in the following days, months and years can be more complex. We all go through changes in life, each stage brings tasks that need to be managed. It is therefore important to have an understanding of the pitfalls that may lie ahead.

RELATE can offer an opportunity for couples who are planning to get married to explore some of the key issues that may arise in your life together.

MARRIAGE PREPARATION. Three separate sessions of one hour, where you both meet privately with a counsellor to explore the following issues.

- ⌚ **Expectations what life will be like and what you expect from each other.**
- ⌚ **How to communicate and manage conflict**
- ⌚ **Money and Values**
- ⌚ **Life Stages and Crisis Points**

In addition to Marriage Preparation RELATE offers ongoing counselling for couples or individuals who are experiencing difficulties in their relationships. An initial one hour **Consultation with a Counsellor** is arranged where you have the opportunity to talk about your concerns. The counsellor will help you explore your options and assess if ongoing counselling with Relate will help with your particular difficulties.

If you wish to make a booking for the 'Marriage Preparation' three session programme, or require any information about the other services that RELATE has available, please call the office in Aylesbury on 01296 427973

PLANNING NOTICES

North Dean

MAS/99/07567/FUL: Construction of detached garage (retrospective) amendment to pp98/06991/FUL at Bowley Rise, Speen Road, North Dean. No objection provided this does not conflict with Green Belt policy
CCC/99/07627/FUL: Erection of conservatory to rear and removal of 3 outbuildings at Under the Hill Speen Road, North Dean. No objection provided that this, together with previous extensions, does not contravene the 50% rule in Green Belt.

Speen

99/06405: Erection of conservatory at 2 Cornerways. No objections
99/06321: Extension to First Floor at 3 Cornerways. No objections
99/06644: Erection of conservatory. No objections
99/06719: Conservatory extensions and conversion of garage to kitchen at Bakery Cottage Chapel Hill. No objections but not in agreement of loss of garage accommodation
99/06836: Erection of garden shed at Windyridge, Grubbins Lane. No objections.
99/06748: Dormer windows in roof conversion to Jasmine, Chapel Hill. Dormer window not in keeping with front elevation of adjoining bungalow.
99/07032: Erection of conservatory at Baytree Cottage, Archway. No objections.
99/07327: Reconstruction of garage at Bramble Cottage, Archway. No objections

The Speen Fete will be held on **SATURDAY, 8TH JULY 2000**.
The theme will be the **"MAGICAL MILLENNIUM"** to reflect this special year and to continue from the success of the Millennium Pageant last year.

It is intended that it will be a special **Fete for all the family**. Many of the side-shows will not charge and there will be a wider range of entertainment's than in previous years. The costs will be covered through making the Grand Draw and the Tombola the principal income earners. It is also intended that there should be sufficient surplus to make a significant **donation to charity**.

Planned entertainments include:

"It's a Knockout"	Traction Engine rides	Maypole Dancing	Cycle Race(s)
Pets Corner	Fancy Dress competition	Punch and Judy	Bouncy Castle
West Wycombe band	Maypole Dancing	Vintage cars	"Leaves of Time" finale

And many other side-shows and stalls.

Stall-holders and visitors will be encouraged to wear fancy dress.

An organising committee under David King's chairmanship is meeting to facilitate the arrangements.

Help with this, and on the day, will be very welcome.

SPEEN MAGICAL MILLENNIUM FETE

8th JULY 2000

Please put the date in your diary

Contact David King (01844 344839) or John Holmes (448420) if you are willing to join the helpers.

Now's the time to plan for the

Grand Fancy Dress Competition

Theme - The Magical Millennium

Prizes in two classes
Adults - Children

Sponsored by

The JENKINS NEWMAN Partnership

SPEEN'S
MAGICAL MILLENNIUM FETE!
Saturday
8th July
2000



JN

SR Farm Contract Services

HEDGE CUTTING — FENCING
GROUND EXCAVATION WORK
PADDOCKS AND LAWNS MOWN
GENERAL GARDEN MAINTENANCE
LOGS SUPPLIED

Tel. Steve Rogers—01494 562041

Beau Vista, North Dean, High Wycombe HP14 4NH

SURGICAL CHIROPODIST

HOME VISITS BY APPOINTMENT

Telephone
NAPHILL (01494) 562569

Mrs Rosemary Stone MSSch MBChA

COMPLEMENTARY THERAPY



BACK PAIN ? MIGRAINE ? MUSCULAR ACHES ?
IBS ? SKIN PROBLEMS ? SPORTS INJURIES ? STRESS ?

Therapeutic and Relaxation Treatments below, available
from home based clinic in Lacey Green

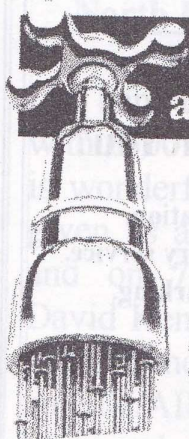
- ♦ Aromatherapy
 - ♦ Indian Head Massage
 - ♦ Reflexology
 - ♦ Reiki Healing
 - ♦ Sports Massage
- Aloe Vera Distributor (FLP)
Free Confidential Consultations
20% Discount for new clients
Gift Vouchers Available
Very Competitive Rates



Here's To Your Good Health !

Call Gilly on 01844 342569 for further information.

Ladies Only Please



Is your water as hard as nails?

60% of British households suffer from
these sure signs of hard water problems:

- Blocked shower heads
- Slow running taps
- Scum marks in bathtubs and basins
- Excessive use of household cleaners
- Harsh, hard towels and clothes
- Increased water heating bills
- Scaled-up kettles and appliances

Nail all your hard water
problems by installing
an EcoWater system.



Contact:
MARION BENNETT

Sterling Softeners

WATER TREATMENT SPECIALISTS

Sterling Softeners,

Courts View House, North Dean,
High Wycombe, Bucks., HP14 4NN
Telephone/Fax (01494) 565232



RICHARD FERGUSON BUILDERS

All building work
undertaken



- ♦ New houses
- ♦ Extensions
- ♦ Renovations
- ♦ Fireplaces
- ♦ Fitted Kitchens
- ♦ Bathrooms
- ♦ Patio's
- ♦ Decorating
- ♦ Electrical work

16 Moseley Road
Naphill
High Wycombe
Bucks., HP14 4SQ.



01494 562954

Speen County First School Children writing about the future

My Millenium wishes and thoughts
I would like learn Karate with
Carbin. I want to look after old people
in Hospital and make clay pots with
William.

Joe

I would like stop wars and look after the world. I would like to help
charities and help people in danger and care for my friends
and learn Karate Also to make clay pots with Joe

2000

William

Millennium wishes
I want to look after my friends and take
care of them when they fall over. I
will take them inside and wash
their knee.

Thank-you God for the words and the Sun.

OLIVER 20100

WE'VE MOVED!



B. A. HOGG (Motor Body Repairs) Ltd.

Unit 3
Fairview Industrial Estate
Kings Road
High Wycombe
Bucks HP11 1RY.

Oh Yez! Oh Yez! What Can We Do for You?

- ◇ Free estimates, at any location.
- ◇ Free collection and delivery service.
- ◇ Easy access and ample parking.
- ◇ Account facility available
- ◇ Fast & friendly service.
- ◇ Return to home service.
- ◇ Company & fleet service.

Interested?

Ring: 01494 512020 (3 lines)



ZURICH
INSURANCE

ESTABLISHED 1972

THE INSURANCE SERVICE

churchill



More Children's Hopes and Fears for the coming Millennium

Millennium wishes and thoughts

I think it would be a good idea to help the charities
and give cloths that are to small to the poor people.

I wish that in the year 2000 we will have no wars.

Emma

I would like to have no more fighting
in the year. I would like to
see the millennium come. I wish
mummy didn't go to work. no one
will drop litter. I wish we could
go to Disney Land

by Siobhan

I dream of a boat

I have a dream of a boat in the sky,
With wings and sails to keep it up high,
From England to Africa it flies through the air,
Around the World and everywhere,
It makes pretty music as it floats along,
The whole world joins in the beautiful song.

By Calum Knott (7years old)

North Dean – Third World Project Update

Our bank balance stands at £3600, with £500 more promised and that is wonderful. BA has generously given us a free flight to Uganda, and on 7th Feb.(or 10th Feb.!) David Kemp will be going out to start on the first stage of building an HIV/AIDS ward at Luwero.

We need a loan (until Sept) of £2000 if you can/might be able to help, please ring Nick Wheeler Robinson 562167 and mark in your diary **THE SUPPER DANCE** to be held on 30th Sept at **Pigotts**, (Tickets £20) to support this project.



**dell
brothers**

**Builders, Developers, Plumbers
and Decorators**

EST.1948

LACEY GREEN, BUCKS.

Tel: 01844 344342/346688

Who's Who in the Area ?

Speen & North Dean New Editor	Glenn Hart	488528
Speen residents Association	Gordon Hall	488331
Speen W.I.	Mary Dawson	488222
Speen Horticultural Society **	John Payne	488259
Speen Playing Field Association	Marion Tozer	488724
Riding for the disabled	Gloria Holmes	488420
Village Hall Committee, Speen	Catherine Butler	488412
Village Hall Committee, North Dean	Megan Chinn	563074
Speen Pre-School	Kay Morgan	564825
Speen School PTA	Amanda Cleaver	488288
Speen Tennis Court	Cherry Seekins	4 88355
Guides	Pauline Hall	488372
Baptist Church	Andy Gower	488758
Speen/ D.D. Good Neighbours	Margaret Jones	488246
Mother & Toddler Club	Caroline Crossley	488269
Neighbourhood Watch	John Radford	488203
Speen First School	Mrs Nayna	488679
Speen Stores	Sharon	488258
Fete Committee Chairman, Speen	David King	01844 344839

**** A Secretary is urgently needed for the Horticultural Society. Anyone who is interested please contact John Payne 488259**

Lacey Green Parish Councillors :	Don White	488437
	Peter Simmons	488016
Speen District Councillor	Paul Rogerson	488315

The ward Councillors for Hughenden Valley & North Dean Are:

Mrs Ann Hildesley	01494 563374	Mrs Lynn Sullivan	01494 563620
Chris Morley	01494 562714	John Rogers (Chairman)	01494 562041

The Council Office is open to the public on Monday, Wednesday & Thursday from 9.30 to 11.30.
During holiday times the contact numbers will appear on the office notice-board.

Contact Numbers for the Police in the area:

Sergeant Russ Murden 01494 717799

PC Paul Sorensen 01494 715352

Inspector Martin Bolton 01628 816910 (responsible for Hazlemere but based in Marlow)

Local Control room 01494 465888 Local Help/Crime Desk 01494 736735

Fax Numbers: Hazlemere 01494 686299. Marlow 01628 816921

Help/Crime Desk 01494 736737

What's on ? - in Speen & North Dean

February

3rd W I	Speen Village Hall
6th School Photographer (pre-school)	Speen Village Hall
10th Pageant Meeting	Speen Village Hall 8pm
25th & 26th Horticultural Ladies Breakfast	Speen Village Hall
28th Parish Council Meeting	Speen Village Hall 7.30pm

March

2nd W I	Speen Village Hall
11th Men's Breakfast	Speen Village Hall

April

6th W I	Speen Village Hall
7th & 8th Concert (see Martin Stockley)	Speen Village Hall 8pm
10th AGM North Dean	N D Village Hall 7.45pm

May

4th W I	Speen Village Hall
12th Copy Date - Speen & North Dean News	
13th Ladies Breakfast	Speen Village Hall
21st Beating the Bounds for the Millennium, (see Martin Stockley)	Speen Village Hall
22nd Parish Council Meeting	Speen Village Hall

June

1st W I	Speen Village Hall 7.30pm
18th Speen Fun day	Speen Playing Fields
24th Millennium Quiz. (Martin Stockley)	Speen Village Hall
25th Millennium Celebration Day North Dean	

July

6th W I	Speen Village Hall
8th Speen Art Exhibition	Speen Village Hall
8th Speen Magical Millennium Fete	Speen Playing Fields
20th - 24th Visit to Hambye "Leaves of Time"	see Marjorie Stockley 488101

August

5th North Dean Fete	
---------------------	--

September

30th Supper Dance	Piggots. In aid of North Dean 3rd world project Dress: Romantic side of Elegant
-------------------	--

December

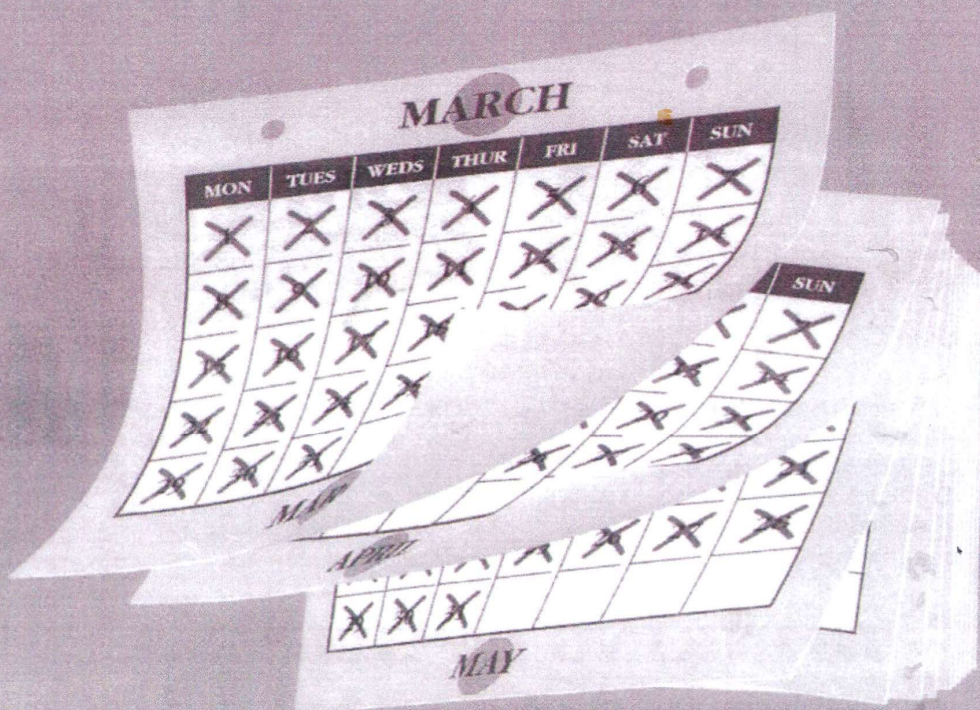
31st Speen Village Real Millennium Party	Speen Village Hall
--	--------------------

Philip

Green

& Partners

**EVERY DAY ONE OF OUR CLIENTS
MOVES HOME IN THE LOCAL AREA!**



If you are moving, why not join our growing number of satisfied clients. Call us ANY day of the week for a free valuation.

31 Crendon Street
High Wycombe, Bucks. HP13 6LJ.
Tel: (01494) 451010

Hazlemere Cross Roads
Hazlemere, Bucks. HP15 7LN
Tel: (01494) 711777

2 Wycombe Road,
Prestwood, Bucks. HP16 0PW
Tel: (01494) 868600

**Unrivalled colour property presentation
AND colour advertising!**