

SPEEN AND NORTH DEAN NEWS

Issue Seven Winter 1995/6

At Christmas Mary Had A Little Lamb

and then another.

To be precise, the Cleaver family Ewe, Mary, had twin lambs on 19th December, much to everyone's surprise, since she had already given birth to lambs earlier in the year.

How come? "If you knew the dad, Simon, you wouldn't need to ask."

It seems Simon was already under a cloud for invading Speen School during school time. "Best draw a veil over what happened then." I was advised.



Emma and Patrick Cleaver with
one-day-old Holly and Ivy

Lost and Found

Gordon Hall of the Old Dairy, Chapel Hill has been discovering a whole series of virtually new plastic squeaky toys left overnight on his front lawn. These include, over Christmas, a toy house and a very realistic christmas pudding. Gordon informs the newsletter that these and the other artefacts will be held until reclaimed by the animal in question or (more likely) its owner. An odd thought - since most dogs are tucked up in bed at night, might the 'father christmas' in this case be brer fox? Gordon says he isn't the only beneficiary; his neighbours having also received the occasional 'gift' on their front lawn. Apparently, there has been no accompanying forensic evidence to indicate either the size or the species of the depositor.

And...

"A Suitable Reply?"

Of the two parish councils around here, Hughenden is the larger, famous well beyond its boundaries for colourful and rowdy debates. By contrast, one might hardly know the other, Lacey Green, existed; witness the absence of any elections in Speen for years. Last time, even one of those willing to stand in this village forgot to register and had to be coopted. No disrespect to Jude and Don; it is the rest of us who should be ashamed of our indifference.

But if the Lacey Green council's decision to support development on our local Green Belt might be interpreted as an attention-seeking device, it certainly worked with me. After reading the inspector's report,

implying that if the application was allowed it might lead to a general development of Flowers Bottom, my personal apathy dissipated forever.

I was even moved to go along to the parish council's December meeting to register a complaint. I did this very briefly in the public forum before the start of the meeting and then sat back to listen. But I wasn't to be allowed to get away lightly.

...so who are you to criticise us? (unsaid)

One of the councillors eyed me with a steely gaze and said, rhetorically, "I don't know how long you've lived here but I don't recall seeing you at any of these meetings before." I then received what might be

described as a brief lecture on how beneficial the parish council had been over the years. I was glad to hear that, but it wasn't addressing the specific complaint being made; why had the council apparently supported a development which was predictably against the overall interest of the community. And neither was there any debate on the matter during the subsequent meeting, even when the Ministry inspector's decision was announced.

Subsequently, the minutes came out, which included a statement that a complaint from a member of the public "had received a suitable reply."

Member of the public.

... meanwhile, on the other side of Chapel Hill - with an even better sense of timing, Gerty the guinea pig gave birth to her babies on Christmas day itself.

The young lady holding Gerty and two of her brood was herself born on Christmas day - ten years earlier.

Speen PTA

Those who enjoy a flutter please note that the PTA CASINO NIGHT is Sat. March 16th.

The ever popular Carribean Night will be Sat. June 15th.

Tickets for both from Amanda Bacon, 562166, or Paul Corrick, 565380.

Any profits to the school.
AMANDA CLEAVER



OLD PLOW BISTRO and RESTAURANT AT SPEEN

Recommended by the Michelin, Sunday Times, Egon Ronay,
Ackerman Heidsieck and Good Food Guides 1995

Below are examples of just some of the dishes on our

SPRING BISTRO MENU

Starters

- * Home made soup of the day £3.95
- * Smoked chicken salad with fresh pineapple £4.95
- * Avocado with brie salad and fresh paw paw £4.95
- * Home made game terrine with port wine and redcurrant sauce £4.95
- * Melon and giant prawns and a Marie Rose sauce £6.95
- * Smoked mackerel patè with horseradish sauce dressing £4.95

Main Courses

- * Roasted breast of chicken with sage, onions, bacon and Cumberland sausage £8.95
- * Crispy duck's leg with red cabbage and chestnuts £8.95
- * Grilled Scotch rib steak with stilton and shallot butter £9.95
- * Grilled Scotch salmon with lemon butter, chive and sun-dried tomato sauce £8.95
- * Roasted pheasant breast with bacon and an apple and gooseberry chutney £9.50
- * Wild mushroom tart with tomato, basil and Parmesan £7.95

All served with a selection of fresh vegetables.

Desserts

- * Lemon and sultana cheesecake, red fruit coulis £3.95
- * Chocolate truffle cake and whiskey sauce £3.25
- * Honey and ginger ice cream and toffee sauce £3.25
- * French apple tart with vanilla ice cream £3.95
- * Farmhouse cheese platter with crudites, walnuts and grapes £3.95

Subject to availability

***For party bookings in the Bistro and Restaurant, and general enquiries,
please contact Mrs Cowan on the number below.***

(01494) 488300

Situated near the Home of Rest for Horses, Flowers Bottom Lane, Speen.
10 minutes from High Wycombe.

AN EDITORIAL REFLECTION ON 1995

"a hot year in more ways than one!"

I've just realised that this is my second winter newsletter, having taken it on "for a few issues" in November 1994. "Adopt your own editorial style, but you've got about three weeks to put it together." - "Put what together?!" - "Don't panic!" I kept muttering as I urgently read through other village publications for inspiration. They seemed pretty serious 'grown-up' publications on the whole, and from larger villages than ours. "Let's make ours light-hearted" I thought - naively failing to anticipate the "planning rage" which blew up around September. It was then my editorial 'honeymoon period' ended with a vengeance.

It was all we needed - a 'civil war' scenario when our reporting experience was more on the vicarage teaparty level.

Damned If We Do...

"Tread carefully", I was warned, but did I...?! Soon there were three crowded public meetings in the village hall within a few days and 138 letters to the council from only 250 households. This hardly suggested a lack of interest. So despite our hitherto 'fun-loving' credentials, I felt it was our duty to reflect what was happening, give out news and allow the expression of opinions. As editor it was my decision, so if anyone wishes to

criticise the coverage, form a queue at my door, please.

...And Damned If We Don't.

Having been accused, by a few, of giving the shop site saga too much coverage, it was especially ironic also to be accused of failing to give any publicity, when it mattered, to another application with environmental implications.

Well - guilty as charged. But in mitigation your honour, who would have imagined that a planning committee would allow a house to be built on Green Belt land which was also within the Area of Outstanding Natural Beauty? My complacency was justified by a single nail-biting vote.

The subsequent appeal against refusal was supported by the local district councillor and the local parish council. I make no further comment except to suggest reading the Ministry inspector's report dismissing the appeal. It is reproduced elsewhere in this issue. I'm sorry that shortage of space mean't that two of the pages had to be 'shrunk'.

Anyway, enough of all that. 1995 saw the start of some very useful organisations in Speen: the Residents Association (who will hopefully become the means of

debating and reporting planning matters in the future) and the Neighbourhood Watch extension (also born out of adversity). It took one resident to suffer a car break-in and two house break-ins within the space of a few days to make her explode into action. The third very welcome new arrival on the scene was, of course, the Speen and North Dean Youth Club. And - dare I say it - the Speen and North Dean News also became a well-established feature of village life during 1995. I don't believe that we lost any organisations during the year.

So, a hot year, 1995, in more ways than one!

Stating the obvious, a small community like ours has the lowest sustainability factor for any kind of publication; not much advertising potential and few social and cultural activities to report. BUT WE HAVE SURVIVED ABOUT A YEAR AND A HALF, mainly thanks to your efforts.

What we need now, I believe, is for more of you to join us on the newsletter team, whether for fund-raising or writing, reporting and interviewing etc. If you might be interested, give the editor a ring on 488222. *peter*

'Improper grant' claim halts meeting.

This was the heading of an item in the Bucks Free Press of 12th January by their staff reporter Malcolm Fitzwilliams.

Mr Fitzwilliams had attended the latest Hughenden Parish Council meeting. As everyone knows, these meetings are considerably brightened up by the contributions of councillor Gloria Leflaive and it seems she was well on form this time. It seems that Gloria was outraged at the £120 grant made to the editor of the Naphill Gazette and asked the council "to re-examine the correctness of the decision...to make a £120 gift to an

unaccountable and unelected private individual in Naphill". Mr Fitzwilliams reports "The individual implied was the paper's editor Hazel Vickery, who firmly denied the grant was improper. She said: "I am not the Gazette. It is a village magazine" She said that the money would help cover printing costs." Reportedly there was then some sort of technical argument about whether the councillor was entitled to bring the matter up so soon after a resolution had been passed. It seems that at one point the chairman "wielded his hammer" and temporarily halted the meeting, and councillor Leflaive accused colleagues of "using standing

orders to get around behaving properly". Parish clerk Lynne Turner said that it was wrongly being suggested that the £120 grant had been a gift to one person. "She said The Gazette is one of five local publications to receive annual grants from the parish council."

Indeed, the Speen and North Dean News benefits from these grants albeit, in keeping with the community's small size, to only half the extent of Naphill. We are very grateful and despite all the rumours I can tell you there is absolutely no truth in the suggestion that our treasurer has been investing it in the National Lottery. Ed.

SALMON ON BREAD WITH TURKEY

Peter recalls some good old days.

When Speen had a bakery it was run by the Martin family and was situated next to Plumridges Stores, run by my Great Uncle and Aunt. I used to go and help out in the bakery, greasing tins scaling and moulding the dough and lighting the oven. It was a side flue oven, fired mainly by wood supplied by the local chair factories. The fire was situated to one side of the 15 foot square brick oven and it took about two hours for the oven to get up to the correct temperature. The fire was then let out and the oven was flagged out with a damp sack on a pole to clear the ash.

As well as supplying bread to the people of Speen, they also delivered door-to-door in the surrounding villages. Village life meant the money would be left in a tin, not locked away in a till.

It was also a tradition to cook the Christmas turkeys for the people of

Speen. We often had about 30 turkeys, and it was the son, Geoff, who looked after them. One year we had a turkey brought in by Mr Bert Rixon. It was wrapped in tinfoil and we were told not to take the foil off. Geoff would baste the turkeys throughout the cooking process, so he decided to put Mr Rixon's turkey to the side of the oven nearest the fire. Eventually, temptation took over and Geoff suggested that we should remove the foil. The turkey was still as white as could be! So we decided to leave the foil off for a little while and saw there was plenty of fat round the bottom of the baking tray.

We put it back near the fire and shut the oven door. We then began talking about the pros and cons of using baking foil - when suddenly we were aware that we couldn't see the oven door for smoke. We quickly opened it and found a turkey on fire!** It was Mr Rixon's

turkey. We took it out of the oven and and threw a bucket of water over it. Then we looked at each wondering what we should do - it was black as coal! We thought about it for a while, then decided to remove the skin, clean the leg ends, replace the foil and put it back in the oven to carry on cooking.

People began to collect their turkeys at about 1pm. Two o'clock came round and so did Mr Rixon to collect his turkey with the foil on. He asked Geoff to show him his bird and Geoff and I looked at each other in despair. We both removed the foil - and to our great surprise the turkey was a lovely golden brown!

This is just one of my childhood memories of the village of Speen.

Ex baker - P. B. Salmon

SPEEN PLAYGROUP

"A fond farewell to those starting school...A warm welcome to all newcomers and their families."

Despite being unable to get the music started at the beginning of the evening, the Playgroup's Halloween Party was a marvellous success. The tremendous efforts of the fund-raising committee cannot go unmentioned; nor can the support given by those attending from the village and the locality. The goal of raising money for the installation of a telephone point in the hall for Playgroup use was soundly met; with everyone having fun in the process.

The visit made to the Playgroup by White Watch from High Wycombe Fire Station, in November, is still talked about by the children (and probably also by those whose access to that part of Studridge Lane was inhibited for half an hour that morning). We were all given an opportunity to clamber in and around the engine, to watch

the flashing lights, to listen to the sirens, to press the buttons and switches on the dashboard, wear the hats and 'play' with the water hose. The crew showed immense patience and tolerance, so much so that we may invite them to visit again - sooner rather than later!

Christmas is always an exciting time for the children, with parties, concerts and plays. It was the looks on their faces as Santa walked through the door at Playgroup that provided a special moment for those of us grown-ups who saw it. The magic of Christmas was shown to be still strong.

And so to the New Year. All the speculation over recent months, about the introduction of the National Voucher Scheme, has abated with Buckinghamshire not becoming a "trial county" as

originally anticipated. All of us in Pre-School Education, however, keep our ears firmly to the ground for any further developments - in that and in any changes that may be brought about by County in the age-structuring of their schools. It appears to be a time of great change in education, locally and nationally, and we at Playgroup intend to keep abreast of it.

To all those children who started school from Playgroup, in January, the staff and committee wish them a fond farewell; and to all our newcomers and their families, a warm welcome.

Monday to Friday 9am until 12pm
termtime *01494 488160*

Other times - Annabelle Patching
(Supervisor) 01494 562895

Kate Slade (Chairman
of Committee) 01494 488262

ANNABELLE PATCHING

THE SPEEN RESIDENTS ASSOCIATION

"Ignore At Your Peril"

Firstly I would like to record our appreciation to the Speen and North Dean News team, and in particular the editor, for giving voice to the village by having the courage to raise local village issues which in some way affect us all. Like it or not, planning applications are just such issues that you ignore at your peril, for once granted they are permanent. They also set precedent for others to follow, so it is important to remind those elected to represent us of their responsibilities in this respect.

The Flowers Bottom Appeal

to build on Green Belt land outside the boundary of the village was just such a proposal, which if allowed would have set dangerous precedents by allowing development of a site in an area designated as of Outstanding Natural Beauty, and the transfer of rights from an abandoned structure to a non related site. The residents of Flowers Bottom were understandably alarmed by the proposal, rejected by Wycombe District Council but enjoying the full support of our District Councillor, Jean Gabbittas. This appeal has now been firmly rejected by the Secretary of State. I would like to thank David Lidington, our Member of Parliament, for his assistance in putting the residents' views before the Secretary of State.

Turning to Speen Stores,

having attended both Wycombe District Council Planning Committee meetings where the proposal was discussed, I have difficulty in expressing the way in which the views of the majority of the village were clinically swept aside. I listened in disbelief to the comments of some members who, amongst other things, suggested that:

** the letters written against the proposal were probably by people who live in large houses on estates and therefore did not count;

** the dangerous access was not a problem, because one member had difficulty in getting out of her road in Wycombe in the morning;

** the dangerous access would not be a problem to large Refuse Vehicles turning, because of their operatives' special skills;

** traffic speed at the junction was not a problem as there is no traffic to speak of;

** reversing onto the main road from the proposed shop parking bays posed no special hazard, as once built, people will get to like it.

It took the intervention of members from other wards to point out the obvious deficiencies of the scheme and to introduce some sense into the meetings. From where I was sitting, it appeared, as later the vote indicated, that a political deal had been struck and that any debate was superfluous to the result.

What those who blindly followed the political lead failed to understand is that the majority of residents are in favour of a scheme - but not this one. So why push it through without thought for the consequences?

At the beginning of the "debate", Jean Gabbittas spoke of a village divided and likened the matter to the situation of Charles and Diana, suggesting that you are either for us or against us. This does not represent the view expressed by the village, who wish to see an improved scheme.

This is not the end of the matter as the proposal now has to follow Departure Procedures prior to consent being given, including approval by the Secretary of State. By now you all should have seen the alternative scheme for the site; so what are your views? Given support it could be the answer; it gives everybody what they want without overdevelopment and with proper consideration for road safety.

For the Residents Association Structure

preparations are well in hand to formalise both the constitution and the committee; eight areas of the village have been suggested to obtain global representation and so make up the committee. Nomination forms are being prepared for return in January 1996, so that we can get onto a more formal footing as soon as possible. In the meantime, the Association will continue to act as set out at our inaugural meeting.

PAUL ROGERSON
Acting Chairman

A Letter To The Editor

Dear Editor,

I am not the oldest resident in Speen, Jean Ridgley and her father had the post office for over seventy years before we arrived!

I see in the BFP that part of a new Speen Stores is to be a café.

I am convinced that more and more motorists appear to be using Speen as a short cut between Wycombe and Aylesbury - and they drive like the devil possessed!

People often say to me - you must have seen many changes in your time? Well I commenced my 39th year of residence in September '95 and I list the main changes as I saw them:

The arrival of the developer resulted in the creation of Abbots Wood, St. Peter's Close, Monckton Way, Hampden Gate and, much more recently, Archway, by a different developer.

Then there was the gradual closure, over time, of our very attractive Post Office and four shops. Our hourly bus service to Wycombe came to an end and our two remaining Public Houses were converted into restaurants. I wonder what the next 39 years will do to Speen!

DCM

Readers' Hobbies

BONSAI (Literally, a tree in a pot)

I became interested in Bonsai while having a holiday job in Liberty's in 1964. I couldn't believe that these delightful little trees could be so real or so expensive!

The thought of owning a real tree or indeed a wood of them, and having them indoors to admire, never really left me. My son bought me my first real Bonsai many years later and I've been hooked ever since.

The word Bonsai means "tree in a pot". The Chinese are believed to have started the art between 618 and 906AD during the T'ang Dynasty. They used pine trees, cypresses, plums, bamboos and sageretas to grow in pots. The Japanese perfected the art of growing miniature trees to look like their larger natural counterparts. The height of a Bonsai is usually between 20 and 70cm.

Indoor And Outdoor Types

There are really two types of Bonsai in England; indoor and outdoor. It is believed that the indoor Bonsai are mainly Chinese and the outdoor Japanese. The actual difference is that 'indoor' are tender plants which cannot survive outdoors all year round in our climate, whereas 'outdoor' are those which can survive, such as pines plus other hardy deciduous and evergreen species.

Getting Started

There are many ways of getting started with Bonsai, but beware - they quickly take over your house and garden; many enthusiasts having only little trees in their gardens and nothing else!

"Up To Your Armpits"

I find that indoor types are the easier to start with, especially during the winter, as you can keep a closer eye on them. One of my most successful buys was from Budgens! I bought this weeping fig with three plants in one pot. So I simply separated them, put each into a separate pot and then just looked at them for a few days. The result you want, I feel, is the most important consideration, and

whether it's possible with the material you've got. In this case, two of the plants were nothing special, but the third was - it had good branches - all round and a very straight trunk - ideal! So I cut away a couple of branches that were crossing, and then left the roots alone for it to become established. That's when the trouble starts! - what do you do with the bits you've cut off? Well you put them in a pot to see if they will grow - and, of course, they do - and then you are up to your arm pits in Bonsai!!

I prefer to shape my trees gently if I can, so I will buy 15 cm 'starter' trees from a nursery. The other method of shaping I was taught on a Bonsai course at evening classes. We arrived to find a 2 metre forest in the classroom, which we quickly encouraged to reduce to 30cm trees in training pots. This drastic treatment is commonly used by the experts with miniature chain saws etc.; but one false move with your knife and ten years' growth has gone and a tree ruined! I think this method is for the brave.

If You Are Young, Grow From Seed

Another way of starting is to grow from seed, and with Christmas coming there will be plenty of spare seeds about: oranges, grapefruit, pistachio or other un-roasted nuts. Pomegranates produce dozens of seedlings, incidentally. Some of the Christmas plants, especially azaleas, can all become part of your collection of indoor plants.

Although I have bought the Bonsai kits, I have never had any success with them.

Weeds Into Bonsai

Some critics of growing Bonsai say "Fancy crippling trees!" This I answer with my own outdoor Bonsai. Collect any woody plants starting to grow in your garden in the wrong place ("weeds"). I have collected holly (though not a good subject), cotoneaster, mountain ash and others. You either have to dig them up and throw them away or bonsai them. Put them into a pot

and see if they survive. Then you can start shaping them.

Pruning Tips

A simple guide to pruning is - whatever you take off the top, you must take its equivalent amount off the roots. After pruning, give plenty of tender loving care; water but no food, as the roots need to grow before feeding again.

Some subjects are more difficult than others when it comes to shaping and pruning, but I still try to keep in mind what I want them to look like. Indoor Bonsai bought from a nursery are often too extreme in their pruning and shaping for my taste, but

it is worthwhile looking at the work of others and learning what you like the best.

They're Works of Art

These little trees are living works of art. When you have one just as you want it, it will continue to grow and change; the job is therefore never finished. With outdoor trees, you cannot bring them indoors for more than a day, especially during the winter. They need to be exhibited in the garden, protected from frost and watered most days.

I would recommend joining a Bonsai club in the area. There was a club started in High Wycombe, but I could not attend the meetings. I will track down the nearest club for anyone interested, though.

NAME AND ADDRESS SUPPLIED

The writer of this interesting article must fear that Bonsai thieves may covert her 'forest', since she does not want either her name or address to be published. However the editor can put you in touch with her if you want to ask advice or just compare vegetation. This is what we want more of, readers writing about their hobbies and interests. So write in to me now or I will be forced to tell you about the Guinea Pig breeding and showing partnership of my granddaughter and me. Ed.

A Bulletin From Speen Baptist Church

Men's Breakfast 4th November

Another in this series was held at the King William, with a total of thirty men from the village attending. Our guest speaker was Brian Matthews who is an engineer working at the U.S. Space Center. Brian formerly lived in the U.K., but for several years he has made his home in America.

Brian shared his experience as a christian working in a highly scientific environment, often under great pressure.

Our next breakfast will be in the New Year, so watch out for details.

* Can You Play Piano Or Organ? *

If you can, then please use your talent at the local church. Join the rota of village residents who provide music for Sunday Morning Worship at Speen Baptist Church.

Contact Gloria Holmes, if you are

able to help, on 488420.

Christmas At The Church

The annual Festival of Carols by Candlelight brought out the crowds on Christmas Eve.

The church was full to overflowing, for a programme which included recordings and music from Brass and String players, with Organ and Piano and songs from Megan and Bill Chinn.

The speaker was Andy Coldwell, a student from Spurgeons College, London, who is also a member of Gold Hill Baptist Church. The offering taken for Spurgeon's Child Care amounted to over £200. The Celebration of the birth of Jesus was followed by coffee and mince pies.

Sunday Ministry

While we continue for a period without a resident minister, we will receive regular support from Gold

Hill Baptist Church, which will provide visiting preachers.

Andy Coldwell is to make regular visits to us as part of his training for full time ministry; he was a full time Thames Valley Police officer and he has also served with the Hong Kong Police prior to entering Bible College.

Andy Gower from Gold Hill will also be making visits to Speen prior to his entry to Bible College later this year. He will be undertaking a church-based training course.

As far as Speen is concerned we continue in our desire to locate a suitable candidate for the post of Minister.

Church contacts are:

General administration and Ministry etc - David King (Church Secretary)
01844-344839 (answerphone)
Treasurer - John Payne 488259

We are always available for prayer, and home visits can be arranged.

DAVID KING

FETE '96 Help make it even better this year with your ideas and/or assistance.

Plans are in hand for the 1996 Speen Summer Fete. If you can assist/take part in this traditional family village day, please contact Peter Dawson (488222). Remember, the more who become involved, the greater the success of the day.

DAVID KING (Fete Chairman)

1. I would like to take part in the planning committee work
2. I could assist with setting up the field on Friday evening 12th July from 7pm
3. I have an idea for a sideshow/ for raising funds
4. I could assist with transport for collecting equipment etc.
5. I would be willing to operate a sideshow or stall.
6. I would be available to distribute programmes prior to the Fete
7. I would be available to assist with clearing up on Saturday evening after the Fete
8. I would be keen to join a working group:
 - a) Publicity
 - b) Field Planning
 - c) Entertainments
9. I am willing to sell raffle tickets prior to the Fete

NAME _____

ADDRESS _____

TELEPHONE NUMBER _____

(PLEASE TICK AND PUT IN THE MAILBOX AT CHERVIL MEADOW
CHAPEL HILL, SPEEN)

13th July

FETE

'96

get
involved

NEW YEAR, NEW LOOK!

As reported elsewhere North Dean Village Hall now has a completely new look. If you haven't yet seen all the improvements please have a look if you require a venue for a function, you won't be disappointed. Events carried on even whilst the works were in progress and an enjoyable Race Night was held on 11th November.



All profits were put towards the Hall refurbishment. Several of the Committee came to terms with betting terminology and can now talk knowledgeably about 'odds' and 'doubles' particularly after sampling the usual bar. We hope to hold another such event during 1996 and hope for an even greater turnout.

Our next event in the lunch held for the on 13th January. This fully commission the pleasure in such nice



Hall will be the annual Christmas more senior residents in the village lunch will give us the opportunity to new kitchen and catering will be a surroundings.

Following this on 2nd March there will be a spectacular dance in aid of the Hall Funds (as usual) and we have been kindly offered an alternative location at Piggots. There will be notices about the details around the village but please note the date in your diaries now as this will be a night to remember.

Bridget Lister
Secretary
N.D.V.H.

(Bridget runs two jobs, one lively household and is doing an Open University course. She has reluctantly left the SNDN team and will have to be re-invented. Thanks Bridget. Ed.)



NORTH DEAN CELEBRATES

For the second successive year, personal invitations were delivered to every North Dean home inviting all residents to Christmas drinks at the Village Hall on the evening of December 21st.

The hosts were the North Dean Village Hall Committee, who served

a warming mulled wine, hot savouries and mince pies. Everyone was given their name badge to wear, so introductions were easy. Our 'new arrivals' were welcomed into our small community. Judging by the noise level, everyone had plenty to say to each other!

Carols were sung with gusto, to the accompaniment of a new electronic piano.

Chairman John Rogers detailed the latest stages of the Hall refurbishment programme, which this year has included a new kitchen, gents and ladies cloakrooms, double-glazed windows and new curtains.

There is still much to be done, but already the Hall is more attractive, comfortable and a pleasure to use.

LILLIAN CASH

WHAT THE BUTLER SAW

But only in his wildest dream

THE SPEEN LEISURE COMPLEX

There has been considerable speculation about the future development of the land behind what was Speen Stores. You may have heard that the proposal to build a high-rise block of flats with designer graffiti, inoperative lifts and a helicopter pad has been refused on the grounds of access - because of the adjacent trees.

The development plan has now been resolved and I'm sure you will all welcome it as a major contribution to the environment and the social life of Speen and North Dean. Following crucial meetings, it has been agreed that a Leisure Complex is a viable proposition.

The focal point will be a large barn classified, for planning purposes, as agricultural rather than residential.

Entertainment

This will be centered on groups with little talent but powerful audio equipment, who will play from 10pm - 4am with short breaks to allow them to top up on their intranasal coriander and comfrey.

These drugs will, of course, be available over the bar to customers, together with Junior Aspirin, Senna Tablets, Cod Liver Oil (capsules or draught) and even sterile saline for injection to those who prefer the mainline route.

A further facility will be a video hire shop which will have rather naughty films available or even naughtier ones for those who can prove they are over 12.

There will be no gambling licence as such, but the shop will sell vouchers which may be used at the gambling tables; winners receiving extra vouchers for purchases in the shop. Losers will just have to pay cash. (Note - the cunning symbiotic relationship between the shop and the Leisure Complex which ensures the viability of each).

Planning Approval

I have been informed by sources which I cannot reveal, that planning approval for the premises will be no problem provided the right people are made honorary members and given free drinks. A license to purvey alcohol and Chicken Madras with cumin rice and lime pickle seems to be subject to the same arrangements.

Food and Drink

Apart from the above, because of

EC directives from Brussels, sprouts will not be available, but there will be coin-operated microwave ovens for your chilli etc, available from the freezer at moderate cost.

If you insist on sneaking in with your own bottles or cans, please leave them in the bus shelter rather than the hedge.

Access

This is only available on foot through my garden. Motorists please feel free to park on neighbours lawns but don't wheelspin as you leave.

Admission will be via a coin-operated turnstile in the hedge. Otherwise the area will be surrounded by electrified razor wire, patrolled by my fierce dog, Luke.

Staffing

We plan to have a regular staff of rather attractive Filipi.....*Sorry readers, but if you want to read the rest of this disgusting paragraph you will have to get your brown-paper-covered copy from John himself, Ed.*

Finally - I believe that this enterprise will boost the local community spirit, provide extra local employment and increase my income. Hopefully you will agree and give it your support.

JOHN BUTLER

SPEEN AND NORTH DEAN YOUTH GROUP

The Speen and North Dean Youth Group has completed its first 3 months and we are happy to say that it is running smoothly and without any major disasters! Our weekly meetings on Wednesday evenings, at 8pm, are attended by about 25 youngsters. We are now officially affiliated to the Wycombe Youth and Community Unit and we are hoping for a grant with which to purchase new equipment for the Baptist Church Hall.

We have been on a couple of trips, one to the Hazlemere Sports Centre and the other to Slough Ice Rink. Despite a few dodgy moments, we all managed to get round the rink in one piece, though the first aid box ran out of plasters for toes and heels unused to the boots!

The young people who come to the club enjoy the informality. They all say that Speen and North Dean have nowhere for them to meet up and spend time together in a relaxed atmosphere, so we hope that the Youth Club provides exactly that.

We finished the year with a Christmas Disco and it was great to see a lot of new faces from outside the villages supporting this event. We have lots of plans for next year and look forward to seeing anyone from 12 to 15 at the Baptist Hall. Remember **Wednesday 10th January at 8pm.** See you there and - a very happy New Year!

ROB and TRICIA LENKO

Interesting to see they are now a "Group" - can't be worse than Blur!

PARTRIDGE & CO.

ARE YOU SELF-EMPLOYED OR RUNNING YOUR
OWN BUSINESS ?

ARE YOU AWARE OF THE NEW CURRENT YEAR BASIS OF
ASSESSMENT FOR THE SELF-EMPLOYED OR THE NEW
RULES FOR SELF ASSESSMENT ? THEY MAY AFFECT YOU NOW !

CALL: RICHARD D PARTRIDGE ACCA

ON - 01494-488277 - FAX OR PHONE

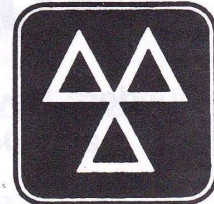
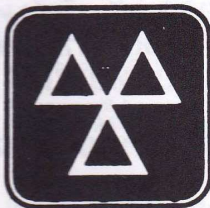
OR 0831-232631 (MOBILE)

A Member of The Chartered Association of Certified Accountants.

McDONALD MOTORS

NORTHMILL

**SUMMERLEYS ROAD
PRINCES RISBOROUGH
BUCKS. HP17 9PU**



M.O.T. TEST CENTRE

(M.O.T.s WHILE YOU WAIT

OPEN 6 DAYS A WEEK)

Telephone
01844 344802

TYRES & EXHAUSTS

**ALL SERVICING, REPAIRS AND M.O.T.s
CARRIED OUT EFFICIENTLY
AND IN A FRIENDLY ATMOSPHERE**

A LOCAL PROFESSIONAL TREE SERVICE



Steve Newman

Hedgerows N.C.Arb
Studridge Lane
Speen
Bucks
HP27 0SA

01494 488474

A friendly, personal service offering advice and free quotations
for all your arboriculture needs

- * Surveys and reports
- * Sympathetic tree reshaping
- * Tree thinning to allow more light into your home and garden
- * Removal of dead, diseased or dying timber to rejuvenate tired trees and eliminate the worry of dead wood damage to your own or others property
- * Felling or dismantling of trees which are 'past their best' or are in a dangerous condition
- * Topping and removal of the tops of 'out of control' conifers
- * Fruit tree pruning for more attractive and productive trees
- * Tree planting and tree relocation
- * Hedge cutting and shaping

We are fully insured and provide a tidy and efficient service



**dell
brothers**

**Builders, Developers, Plumbers
and Decorators**

EST.1948

LACEY GREEN, BUCKS.

Tel: 0844 344342/346688

**• Walters Ash •
Private Hire Services**

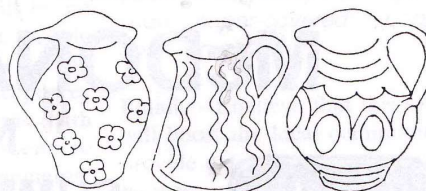
Airports • Hotels • Theatre • Restaurants
Weddings • Station • Etc • Any Distance
Courier Service for Documents and Packages
Mobile Phone for Clients Use

**Telephone: Alan Coles (01494) 563456
Mobile: 0831 348549**

SPEEN POTTERY

Tel: (0494) 488 206

DECORATIVE
EARTHENWARE by Tessa Rubbra



The track leading to SPEEN POTTERY runs down a lovely secluded valley just outside the village of Speen (near the Old Plow). The Pottery and Showroom is part of an old cottage with a delightful garden. There is parking space at the pottery.

On display in the showroom are examples of beautifully coloured and fine tableware. Special Commemorative Plates and Bowls can also be made for Wedding Presents, Anniversaries, and other occasions that need to be remembered.

The Pottery is open every day, but if you want to see Tessa to discuss an order it would be advisable to ring before coming.

*Tessa Rubbra : Valley Cottage, Highwood Bottom,
Speen, Bucks. HP17 0PY.*

Sharon Douglas MGCP

Aromatherapist

Hillborough Cottage
Chapel Hill
Speen HP27 0SP

Tel : 01494 488046

ABBEY BARN CONTRACTORS
WEST YARD, SLOUGH LANE, SAUNDERTON, HIGH WYCOMBE
TEL : 0494 562003

Building Supplies for the Professional and DIY
Large Quantities in Stock for Collection or Delivery

- Sand & Ballast
- Cement
- Graded Topsoil
- Reject Stone
- Peashingle for Footpaths & Drives (10 & 20 mm Shingle)
- Cotswold Shingle 10 & 20 mm - Samples on Request
- 3, 4 & 6 yard Skips for Hire
- Building Sand
- Flints
- Leighton Sharp Sand
- Type 1 & Type 2 Road Stone

OPENING HOURS : Monday to Friday - 7am to 5.30pm
Saturday - 7am to 12.30pm

FRANK FARR

Moving out of the area?
Our long established letting
office receives many
enquiries for properties
in
SPEEN - NORTH DEAN -
WALTERS ASH -
NAPHILL - BLEDLOW -
PRESTWOOD - GREAT
MISSENDEN - HIGH
WYCOMBE AND
SURROUNDING AREAS

For Further
information and
a copy of our
comprehensive
Letting Brochure
telephone

BURKES ROAD
BEACONSFIELD
01494 676266



Rosemary A. Stone

(MSSCh MBChA)

SURGICAL CHIROPODIST

Home visits by appointment

TELEPHONE:
Naphill 562569

Vivaldi, Stocking Lane, Hughenden Valley
Bucks. HP14 4NE



PETER F. BOOTH F.B.C.O.

OPTOMETRIST

A SIGHT CARE PRACTICE

EYE EXAMINATIONS

CONTACT LENS
FITTING

SOLUTIONS AND
ACCESSORIES

SAFETY SPECTACLES

VDU ADVICE

FASHION & BUDGET FRAMES

CHILDRENS
FRAMES

SUN SPECTACLES

MAGNIFIERS

CORDS & CHAINS



120 STATION ROAD, CHINNOR

TEL: KINGSTON BLOUNT (0844) 351564



Dear Children,
Thank you and Mrs Elkin for your lovely stories. I hope you did not mind that I put them into my special shrinker to get them all in?
The Editor.

Speen First School.
Speen.

Teacher

Tel 458221

2nd January 1996

Dear Mr. Dawson,

please find enclosed work for inclusion in the Speen and North Dean News from YR and Y1 children. I understand the work can be returned to the school after being copied, I don't have copies in school,

Yours sincerely,

Angela Elkin (Mrs)
Class Teacher

P.S. After having lots of bear stories read to them the children were asked to make up their own stories, adults helped with the scribbling.

Richard Page



It was a nice sunny day so Rosie decided to have her lunch in the garden. Two bears came along and climbed over the garden gate. Rosie picked up her lunch and ran to the shed but she dropped her food on the way.



One of the bears opened up the basket and ate a banana. The other bear was a greedy bear and ate up all of the food. Rosie opened the shed door and saw the bears in the kitchen.



They were putting all of her food in the basket and when they had finished they ran away into the woods where they ate it all up.

William Dixon Hempstock



George and his mummy go for a picnic in the woods. George starts to unpack the food when along comes a big blue and yellow bear. George and his mummy run back home because they do not want the bear to eat the picnic.

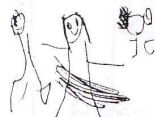


The bear is a clever bear so he follows them back home. George and mummy go inside and lock the door but the bear squeezes under the gate. They run into the garden and hide in the shed to eat their picnic.



The bear is a naughty bear and smashes the window. He joggles up all of the food.

Hannah Goldie-Jones



Jessica has lost her teddy bear. Her teddy is called polar bear.



Jessica wants to find her bear. She looks in the bedroom, the hall, the sitting room and under the carpet.



She thinks she can hear him snoring but it is her dog. The dog gets up and Jessica finds him under the chair.

Alex Brockley



The bear tripped up on the rope and there was blood on his knee.

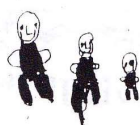


Mummy went to get some plasters she stuck it on Michael's knee.



Daddy untied the rope and he threw it over the fence.

James Abbot



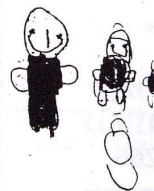
Three bears are happy. Mummy-bear is making some porridge. They all go for a walk.



Goldilocks comes in the house. Daddy-bear's porridge is too hot, Mummy-bear's porridge is too cold and Baby-bear's too salty. So Goldilocks didn't eat any of them.



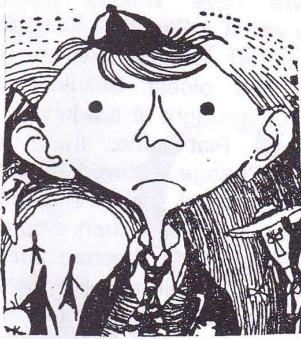
She went up in to the bedroom and she tried Daddy-bear's bed and it was too soft. She tried Mummy-bear's bed and it was too hard. And she tried Baby-bear's bed and that was just right. She went to sleep in Baby-bear's bed and then three bears came back.



Daddy-bear said: "Who's been eating my porridge?" And Mummy-bear said: "Who's been in my bed?" And Baby-bear said: "No one has been eating my porridge so we can eat it all up."



Memories Of My Schooldays



When Boiler Was Boss

When I first stepped across the portals of Speen School at the tender age of 5 years, it was a typical small Village School, with two rooms staffed by two; Miss (Boiler) Smith presiding over the infants, and the Headmistress, Miss (Minnie) Hopton, taking charge of the older children.

Miss Smith travelled daily from Downley on a sit-up-and-beg cycle and, come rain, snow or shine, was rarely if ever late. Miss Hopton lived in the village at the top of Speen Hill.

A Gentle Regime

Discipline in the infants was kept by a kindly word or a stern look. The ultimate sanction was a threat to be sent to see the Headmistress, though this was never, to my knowledge, carried out.

Happy Days

Reading was learnt at teacher's knee, and the tables chanted over and over until they could actually be used to add and subtract. These were happy days!

Oh No! The Big Room!

With the three R's well and truly learnt, it was time to progress through that dreaded door and into the big room. Here discipline was kept with a well-used cane, the very

threat of which kept us on the straight and narrow.

Then The 'Invasion'

Our education progressed apace, until some time after the outbreak of World War Two our peace was shattered by the 'invasion' of evacuees from London.

In order to accommodate the extra numbers, our woodwork benches were removed, and the big room divided into two by means of a curtain. A third teacher arrived to take charge.

The Big World

Having lost the facilities for woodwork, it was decided that the more senior boys should go to Princes Risborough once a fortnight to continue this side of their education. Travel was by walking to Lacey Green, across the war-time airstrip (which is now a sports field) and then by Farmers' Bus.

On Spindler's List

The reputation of Mr Spindler, the woodwork master at Risborough, had preceded our first visit, so not many of us were keen to go. Strolling across the air field on that first day, we were overjoyed to see the bus disappearing down the road. However, Minnie was not so pleased to see us back at Speen. A repeat of this scenario the next scheduled day was not the cleverest thing we ever did. A carefully written note was addressed to Mr Spindler and we were despatched to catch the midday bus to Princes Risborough. Suffice to say that none of us were very keen to sit down for the rest of the day; neither did we ever miss the bus again.

Getting Wise and Crafty

Having got over the culture shock,

the lessons learned there did stand me in good stead for the future. These new skills were to be put to the test much sooner than expected. An accident occurred to the dividing curtain in the big room. The metal frame was joined to a base plate by wooden dowels and these latter had broken. As the tools at the school were very basic it was necessary, (or at least that's what we told Minnie,) to burn the dowels out of the pipe with the aid of a poker made red hot in the tortoise stove which heated the classrooms. This took all of a day and a half and was much better than attending maths classes! A new scam was born! 'Accidents' happened with amazing regularity over the next few months - until Minnie's patience finally ran out. The rails were then taken away to be welded up.

Make Your Mind Up Time

Time passed and I passed the Grammar School entrance exam. However, I decided it was not for me and, after long arguments with my parents, I was allowed to remain at Speen School, but with threats of what would happen to me if I failed the exam for the Technical School when the time came. I duly fulfilled this ambition and was rewarded with a new bicycle for my efforts. And so I left Speen School to further my education in High Wycombe.

THE OLD CODGER

(About being a young codger)

PS - Who knows the name of the third teacher.

Never mind that, who knows the name of the Old Codger - it's getting very frustrating! Ed.

MUSICAL EVENING IN SPEEN



Speen Village Hall will be holding another of their annual musical evenings on 10th February.

This time it will be Jazz by popular request and there will be five musicians - The Rod Hamer Jazz Band - playing the music of Louis Armstrong and the Chicago Roaring Twenties.

Tickets will be £5, available from

Catherine Butler (488412) and Sta Bale (488015).

The time is 7.30pm for a prompt start at 8pm. There will be a raffle and refreshments, all in aid of the Village Hall funds.

CATHERINE BUTLER

SPeen IN 1900

The other day I came across a copy of the Ordnance Survey of Speen and the surrounding area. Ever since these maps were produced, Speen has had the unfortunate distinction of being situated at the junction of four sheets; this makes reproduction difficult. I thought it might be interesting to have a look at the village as it then was from the buildings shown on the maps. For ease of identification, present-day names of buildings have been used.

Coming up the hill from North Dean, we first see, on the left, the Baptist Chapel, followed by Pye Cottage and Pye Corner. There is then a field and a little further on up the hill we have Rosebank Cottage, formerly Ward's Builders Yard, and then the Old Dairy, Midmede, Monimail and Crendon Cottage. The last building on that side of the road at the top of the hill was the King George public house.

On the opposite side of the road coming up from the Old Plow, the first house is Hill Cottage, followed by Granneys and Fir View Cottage. Crossing over Grubbins Lane, we find Speen School and the row of three cottages known as School Cottages. Crossing over Studridge Lane, there is Chapel Cottage

which derives its name from the fact that 200 years ago it was the first place of worship in the village where all denominations met for their services prior to the construction of the present chapel in 1813. Just before the present St Peter's Close, there was the cottage known as Old House. Continuing down the road towards North Dean, the only other house was Cottage Farm with its adjoining barn behind. This barn was of some antiquity, probably a Tithe Barn; demolished some ten years ago to make way for four new large houses.

Turning off Chapel Hill down the Hampden Road, there was only one building on the right-hand side, Rose Cottage, which is a Listed Building. On the left-hand side, there was the row of cottages now known as the Old Post Office, followed by the three cottages laying back from the road, Gable End, Aveluy and Corner Cottage. We next have the King William 1V public house, with Holly Cottage and The Manse across the end of Studridge Lane.

If we turn off into Studridge Lane opposite the former King George public house, we have on the right-hand side, Stone Cottage followed by Spinning Wheel Cottage, (which at that time was the Post Office). This is followed by The Roses and West View Cottage, and laying back from the road, the Longyard Cottages. On the

opposite side of the road we have one of the village ponds, behind which is Heath Cottage. Further along we have Willotts Farm, opposite which is Elm Tree Cottage and The Old Cottage, which is probably the oldest building in Speen. Turning right at the junction with Moses Plat Lane, there is Woodbine Cottage followed by the other village pond, (filled in some thirty years ago) and then Cherry Tree Cottage, The Lecture Hall, (now the Village Hall) and Ringdale. On the opposite side of the road there are the pair of Pond Cottages, Orchard Cottage, Farthings and Leslie Cottage.

This is now the sum total of all the properties within the village about 100 years ago. I hope these few notes will make your next walk round the village all the more interesting. At that time, you will see there were approximately forty buildings, whereas today there are about 250; over half of which having been built within the past four decades.

DON WHITE

Don also gave me a photocopy of the map, presumably made round the turn of the century. Unfortunately it looks a bit too faint to reproduce, especially since it would need to be photocopied a further twice. Ed.

HOW ABOUT A SPEEN WALK DOWN MEMORY LANE This Spring Or Summer?

After talking with Don on the phone about this article, I thought what an interesting idea it might be if, say this coming spring or summer, Don and one or two other Speen old timers could take us newer residents by the hand, so to speak,

and literally talk us round the village; maybe telling us a few tales from the past which perhaps shouldn't be written down?

What do you say Don? Maybe we could cap it all off with an informal

lunch at some local pub; maybe even get out to the Pink, energy, permitting? I think I know a few folk who would like to join in. If Don agrees, the newsletter can give details of what is arranged, in the next issue. Ed.

Philip

Green

& Partners

COLOUR DETAILS SELL HOUSES

The image shows three overlapping real estate advertisements from Philip Green & Partners. Each advertisement features a black and white photograph of a house, a 'SOLD' stamp, and descriptive text. The first advertisement on the left is for 'Flowers Bottom Farm' in Speen, Bucks, with a price of over £200,000. The middle advertisement is for 'Flint Cottage' in Speen Road, North Dean, with a price of £179,950. The third advertisement on the right is for 'Spring Cottage' in Chapel Hill, Speen, Bucks, with a price of £195,000. All three advertisements include the company name, address (31 Crenndon Street, High Wycombe, Bucks. HP13 6LJ), and telephone number (01494) 451010.

Flowers Bottom Farm
Flowers Bottom, Speen, Bucks.
Offers Over ... £200,000 ...
For The Freehold

Flint Cottage
Speen Road, North Dean, Bucks.
Price ... £179,950

Spring Cottage
Chapel Hill, Speen, Buckinghamshire.
Price ... £195,000 ... Freehold

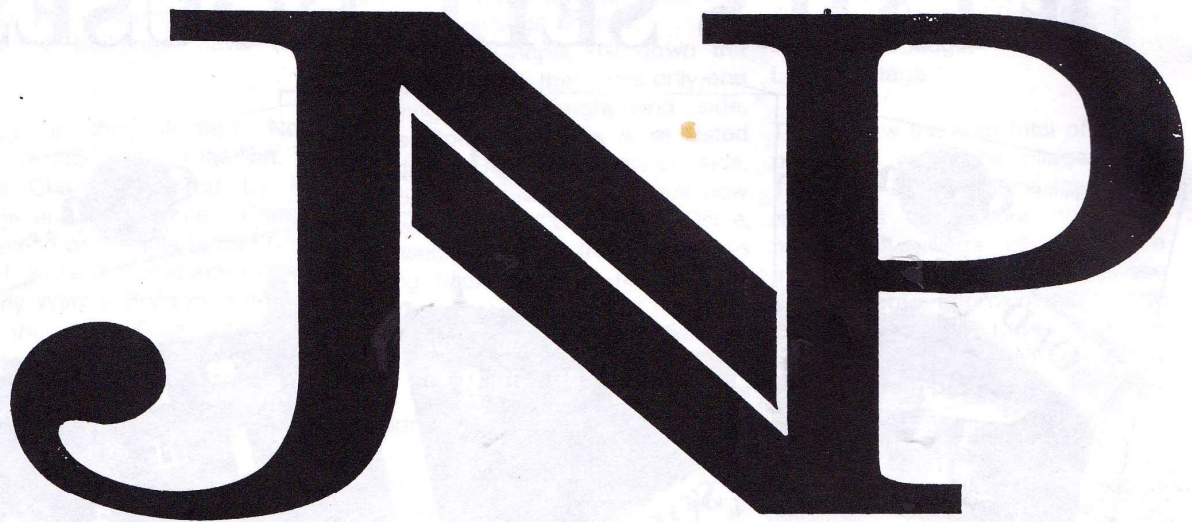
**IS YOUR PROPERTY
BEING SOLD IN COLOUR?
IF NOT, WHY NOT?
CALL US ON (01494) 451010
FOR FURTHER INFORMATION**

31 Crenndon Street,
High Wycombe, Bucks. HP13 6LJ
Fax: (01494) 448861

17

Hazlemere Cross Roads,
Hazlemere, Bucks. HP15 7LN
Fax: (01494) 711677

JENKINS NEWMAN
Partnership



**ESTATE AGENTS
VALUERS, SURVEYORS
AND FINANCIAL ADVISERS**

THE ULTIMATE SALES TEAM

**Specialising in the sale of properties in
Speen, North Dean and the surrounding villages**

**Offices at: 27 Crendon Street, High Wycombe Tel: 0494 528000
and Hazlemere Crossroads, High Wycombe Tel: 0494 716000**

EFFICIENT, PROFESSIONAL & INDEPENDENT

NEIGHBOURHOOD WATCH STILL LOOKING FOR VOLUNTEERS

We had a good response to our call for volunteers in the last Newsletter. It is clear from the comments we have had from Speen residents that there is both need and desire for a Neighbourhood Watch scheme for the whole village. Don White, Chairman of the Parish Council, has agreed to be a coordinator for his part of the village, thereby helping to bind Neighbourhood Watch more closely into village affairs. But we are still looking for more volunteers to cover the following areas:

St Peter's Close, Highwood Bottom, Cherry Tree Close, Grubbins Lane (far unmade end), Coleheath Bottom, Moses Plat Lane, Flowers Bottom Lane, Chapel Hill, Mobile Home Site (Chapel Hill), Turnip End.

Would volunteers come forward from these areas for this vital and rewarding task and call Jackie Newman on 488474. Jackie will answer all your questions, but perhaps I could dispel a general attitude matter. Neighbourhood Watch is a scheme whereby we look after each other's vital home security interests and more generally help in the fight against the rising tide of crime in our country. Commitment to the scheme has nothing to do with being a vigilante - but vigilant certainly. It has nothing to do with prying - but deters hostile prying eyes - of course!

PC Brian Price - our local Constable - spoke to a meeting of Neighbourhood Watch Coordinators on 12th December 1995. His main Crime Prevention points were:

** The overall crime situation in our area has calmed down over the past 12 months, but this should give no cause for complacency.

** TVP's activities in the recent operation 'Christmas Cracker' netted some £2.5M of stolen property.

** Money to feed drug habits is high among the causes of crime in our area. Thus all items which can readily be turned into cash are particularly attractive to the burglar - jewellery, money, household articles (a £350 video recorder will fetch £25!) - and must be safeguarded accordingly.

** The most obvious place where burglars look first is the main bedroom - for cash and jewellery!

** Most local crime takes place during the daytime.

** It has to be faced that drugs are well into our schools. Parents are urged to listen to their children and to follow up any information gleaned responsibly.

** IF YOU HEAR A BURGLAR ALARM - DO SOMETHING ABOUT IT! If you think a crime might be in progress - Dial 999. In other circumstances call TVP Operations - 01296 396000.

** WRITE DOWN all suspicious car numbers when spotted. Include any other relevant information. Such notes can be crucial evidence leading to convictions.

PC Price, in coordination with Don White and the Parish Council, will arrange for the TVP Crime Prevention Caravan to visit Speen

from 10am to 4pm on Saturday, 20th January 1996; it will be parked in the King William Car Park (by kind permission of Geoff Carter) and manned by some of you Neighbourhood Watch Volunteers. WATCH FOR NOTICES. As an alternative date - the Caravan will visit Lacey Green on Saturday 17th February 1996 - 10am to 4pm.

The Speen Village Hall has been booked for a VILLAGE MEETING concerning NEIGHBOURHOOD WATCH at 8pm on TUESDAY 16th JANUARY 1996. WATCH FOR NOTICES. This will provide an opportunity for all who wish to attend to hear about local crime prevention and especially NEIGHBOURHOOD WATCH from the experts from Thames Valley Police.

"Neighbourhood Watch" signs will be displayed around the village in due course. Placing of the signs will be carried out with advice from the Parish Council.

Crime prevention literature has been requested from TVP; it will be distributed by your area coordinator as soon as it is to hand.

TERRY CARLTON

SPEEN Neighbourhood Watch



DO YOU CARE ABOUT YOUR HOME?

DO YOU CARE ABOUT YOUR PROPERTY?

DO YOU CARE ABOUT YOUR VILLAGE?

Many of you will know that we've been actively establishing a network of Neighbourhood Watch Schemes in the village and you'll be able to read more about how that is progressing in the next village newsletter. We can, however, give you some advance warning of two events that will soon take place that we hope you will be interested in.

On Tuesday 16 January at 8.00pm in the village hall there will be a general talk on NEIGHBOURHOOD WATCH and how we can help each other. That will be followed by a general talk on CRIME PREVENTION by Thames Valley Police.

ALSO, On Saturday 20 January Thames Valley Police will have a mobile caravan on CRIME PREVENTION at the King William between 10 am and 4 pm.



The Planning Inspectorate

An Executive Agency in the Department of the Environment and the Welsh Office

Room 1404
Tollgate House
Houlton Street
Bristol BS2 9DJ

Direct Line 0117-987-8927
Switchboard 0117-987-8000
Fax No 0117-987-8769
GTDN 1374-8927

Mr B W Price
53 Towersey Drive
THAME
Oxon
OX9 3NS

Your Ref:

Our Ref: T/APP/K0425/A/95/257751/P5

Date: 130 NOV 1995

Dear Sir

TOWN AND COUNTRY PLANNING ACT 1990, SECTION 78 AND SCHEDULE 6
APPLICATION NO: W/95/5244/00

1. I have been appointed by the Secretary of State for the Environment to determine your appeal against the decision of Wycombe District Council to refuse outline planning permission in respect of an application for a detached dwelling, consisting of 4 bedrooms and constructed in brick and flint, on land opposite Flowers Bottom Farm, Speen. I have considered the written representations made by you and by the Council, together with those from Lacey Green Parish Council, other parties and interested persons. I have also considered the contents of letters sent to the Council at the application stage, copies of which have been forwarded to me. I inspected the site on 21 November 1995.

2. The appeal site is located to the west of Speen, amidst occasional sporadic development which flanks the lane leading towards Darvillshill. Apparently for some 65 years it has served as a vegetable garden for the nearby farm, but the ownership link has been severed with the recent sale of the farmhouse. The site lies within both the Metropolitan Green Belt and the Chilterns Area of Outstanding Natural Beauty (AONB).

3. Paragraph 35 of the Buckinghamshire County Structure Plan establishes a general presumption against development in the Green Belt. This is reinforced by Policy C1 of the recently adopted Wycombe District Local Plan and by Government advice set out in Planning Policy Guidance (PPG) 2. Your proposal for the land in question conforms to none of the exempted development categories listed in these documents. Sited well to the west of the defined built-up area for Speen, neither would development qualify under Local Plan Policy C4, which permits limited infilling within certain identified settlements. Clearly, therefore, the proposed development would contravene approved locational policy.

4. Consequently, and further to my inspection of the site and its surroundings and my study of the representations, I consider there are 2 main issues to be determined in this appeal. First, in the light of the legislative requirements of Section 54A of the above Act, I must decide whether very special circumstances exist in this case which outweigh the provisions

as "an untidy piece of land". In your opinion, it would serve as acceptable infilling between the dwelling known as 'Ploughshare' and the collection of farm buildings to the north.

10. I am unable to share that view and believe no planning gain would result from developing this land for housing. It is true that the cultivated parts of the vegetable garden are defined by dilapidated corrugated iron sheeting and an unsightly lock-up garage, mainly of similar material, stands alongside the access. Yet the impact on the attractive environment is much less severe than the jumbled assemblage of old farm buildings on the adjoining land and the unsightly scatter of discarded farm machinery, abandoned car and a caravan in the field beyond. Contrary to the apparent belief of at least some of those writing in support of your scheme, a grant of planning permission would leave unaffected the more harmful elements in the local scene.

11. The new house, be it 4-bedroomed as initially proposed or a smaller, 3-bedroomed version as later volunteered, would be prominent not only from the road but also from the public footpath which immediately abuts the appeal site and rises up both sides of the valley. No matter how sympathetically designed, it would consolidate the sporadic development along Flowers Bottom Lane and harm the generally open character in this part of the AONB. As for the various other developments allowed in the locality, to which you have drawn my attention, the Council have given reasons to justify their belief that approved policy has not been contravened. Acceptance of your scheme, on the other hand, would make it difficult for them to resist similar future proposals for which there is no essential need and which, in cumulative terms, would further erode the character and visual qualities of the AONB.

12. I have taken into account all the other matters raised in the representations, including the many opinions expressed by local residents both for and against the development but find nothing of sufficient weight to override the considerations which have led to my conclusions.

13. For the above reasons, and in exercise of the powers transferred to me, I hereby dismiss this appeal.

G Spenceley

G SPENCELEY BSc MPhil DipTP MRTPI
Inspector

reproduced as montage to fit page,
but otherwise as original Ed.

of the development plan. Secondly, I need to assess the effects of the proposal on the character and appearance of the AONB.

5. Whilst unable to plead personal hardship or compassionate grounds for the dwelling, you regard this as your sole opportunity to achieve affordable housing in the locality. As a police constable with special responsibility for Speen and the surrounding villages, you contend that living locally, rather than at your present house in Thame, would enable you to carry out your duties more effectively. That may well be the case but, as pointed out by the Council, there must be a wide range of properties available for purchase within the area you cover. In assessing this aspect, I cannot ignore the advice in PPG1 that only exceptionally should personal circumstances be regarded as a material factor in determining planning applications. Even were I to see your work-related submissions as important to this case, they could not be accorded sufficient weight to override the more general planning considerations, for a new dwelling would remain on the site long after your current needs have changed.

6. Your other principal argument concerns a derelict, abandoned, double unit mobile home, known as Omar Lodge, which is located alongside Highwood Bottom, about 300m north of the appeal site. You state that, were permission granted, you have arranged with the landowner to purchase that site as well as the appeal plot and would undertake to remove the eyesore and restore the land as part of the adjoining field. In terms of policy, you believe that, despite 2 separate sites being involved, the new house would qualify as a replacement dwelling in the Green Belt, as accepted by Structure Plan Paragraph 35(h).

7. Having given careful thought to this proposition, I find there are important reasons why it cannot be accepted. Firstly, the relevant policy relates to "existing habitable dwellings" and, both from the report of the Council's Head of Environmental Services and my own inspection, I am in no doubt that the structure has long since ceased to be capable of human habitation. I note too, in passing, that the more up-to-date Local Plan does not appear to accept the replacement of dwellings in the Green Belt.

8. Secondly, in your letter of explanation to local residents, you state your intention to enter into a Section 106 agreement to govern the "transferring (of) the development rights to the new site". This suggestion, however, seems to overlook the fact that the mobile home has never benefitted from any grant of planning permission or a certificate of lawfulness and that residential rights no longer appear to exist. Furthermore, your mention of entering into a Section 106 agreement appears flawed on 2 counts. Circular 16/91 advises that a planning obligation is inappropriate where it is not needed to enable the main development proposal to proceed. In addition, you do not own or have a controlling interest in the Omar Lodge site so you are presently not in a position to guarantee the suggested clearance of that land. I am therefore led to the conclusion that neither of your principal arguments carry significant weight and overall, on the first issue, I am not persuaded that any special circumstances exist to override the provisions of the development plan.

9. Turning to the effects on the AONB, my starting point is the requirement of Structure Plan Paragraph 29 and Local Plan Policy L1 that special attention should be paid to the preservation and enhancement of the scenic beauty of the Chilterns. The latter policy adds that any development which is likely to damage the special character, appearance and enjoyment of the area will not normally be permitted. Faced with these policies, you express the belief that the erection of a cottage-style house, in brick and flint under a slate roof, would be in sympathy with the local area and improve the appearance of what you describe



**Speen
Senior Citizens
Lunch**

<

**And The Not
Quite So Senior
Citizens**

**The Youth
Club**

>



Hughenden Builders

Est 22yrs

All Building Works Undertaken

- Extensions, Alterations, Loft conversions
- Roofing, all types
- Drives, Block paving, Tarmac etc
- Patios, Walls, Garden Landscaping
- Plumbing, Plastering, Carpentry
- Planning Service - Clear & Concise Plans

Single Storey £150.00 + Council fees
Two Storey £300.00

Free detailed estimate with drawing.
Planning fees returned if tender accepted

171 Main Road
Naphill.

Tel: 01494 562937
01494 438057



WHAT WE CAN DO FOR YOU

Free estimates - at any location
Free collection & delivery service
Easy access & ample parking
Account facilities available
Fast & friendly service
Return to home service
Company and fleet service

INTERESTED?

RING 0494 711680 3 lines

Windscreen
Replacement

Courtesy
Cars

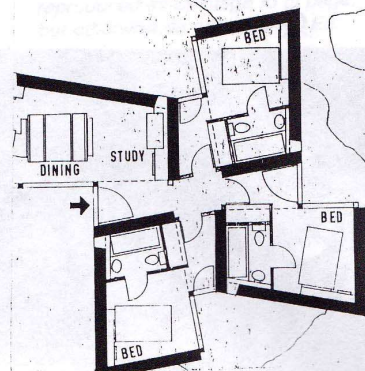
ESTABLISHED 1972

Recovery
Service

Company
Accounts

RECENT SPEEN PLANNING APPLICATIONS

- W/95/5156 2 Wayside - Conservatory
- W/95/5244 Kitchen Garden of Flowers Bottom Farm
Erection of detached house
- W/95/5388 Woodbine Cottage, Studridge Lane
Two storey side extension
- W/95/5453 Finches, Chapel Hill
Extension to kitchen at front of house
- W/95/5710 Hillborough Cottage, Chapel Hill
Rear extension
- W/95/5717 1 Cottage Farm Way
Four dormer windows
- 95/05808 Holly Goblins, Studridge Lane
Tree surgery
- 95/06013 Flowers Bottom Farm
Demolish and rebuild stable block
- 95/06085 6 Abbotswood
Retaining wall at front of house
- 95/06086 Beeches, Hampden Road
Garage and utility room conversion
- 95/06305 4 Cottage Farm Way - Conservatory
- 95/06421 Speen Stores, Chapel Hill
Demolish existing shop and erect new shop with one two bedroomed
and two pairs three bedroomed houses



In addition to these applications notified by Don White, there is another, 95/07120, for 2 extra "park homes" and 2 "travelling caravans" to be allowed on the Flowers Bottom Lane Mobile Home Park. Historical reference is also made, by the applicants, to "affordable housing" and "gypsy site" options.



DECISIONS OF WYCOMBE DISTRICT COUNCIL PLANNING COMMITTEE

- | | | |
|-----------|--|----------|
| W/94/6993 | 2 Mynthurst View, Hampden Road Side and rear extension | Approved |
| W/95/5244 | Erection of detached house, Flowers Bottom Farm | Refused |
| W/95/5156 | 2 Wayside - Conservatory | Approved |
| W/95/5010 | Flowers Bottom Farm Side and rear extensions | Approved |
| W/95/5388 | Woodbine Cottage, Studridge Lane Two storey side extension | Approved |
| W/95/5453 | Finches, Chapel Hill Extension to kitchen at front of house | Approved |
| W/94/6981 | Speen Stores, Chapel Hill Demolition of shop and erection of one house and garage | Refused |
| 95/05710 | Hillborough Cottage, Chapel Hill Rear extension | Approved |
| 95/05717 | Dormer windows, 1 Cottage Farm Way | Approved |
| 95/06013 | Flowers Bottom Farm Demolish and rebuild stable block | Approved |

LATEST FROM THE TWINNING ASSOCIATION

We held our popular Meet and Greet Lunch on 15th October, which was attended by 54 people. According to the noise level and the amount of food and wine consumed, it was a very successful event, made even better by a wonderful Autumn day, enabling those who felt energetic to 'walk off' the effects.

Thank you to all those helpers who, by their efforts, made the event a memorable one.

November 4th saw our Jumble Sale, one of a series in the village. It's simply amazing where it all comes from and where it disappears to. Thank you again to everyone who contributed and helped on the day.

May 1996 be a prosperous year for Twinning, with exciting adventures and happy memories - in our Association and with the Hambiottes.

Finally, here are some of the events to start the year:

January 20th. Twinning quiz at 8pm in the Lacey Green Village Hall. Teams of 8. Finger Buffet. £5 each person.

February 29th. Twinning Leap Year Supper at Pink and Lily. £7.50 each and numbers limited, so book early.

March 23rd Social Evening at Lacey Green Village Hall, includes supper and entertainment by 'The Last Resort'. Tickets £10.00. Sounds like a great night out.

Accomodate a French child?

April 17th to 22nd. Visit by French children. Anyone who can offer accomodation or wants to join in, you're very welcome; please contact a committee member.

LILLIAN TROTTER

NORTH DEAN NEWS

By the time this issue hits the streets, it will be 1996, so may I wish you all a very Happy New Year.

The refurbishment of the North Dean Village Hall has been completed, so may I now thank everyone who made donations or attended the events ran during the year. It was those proceeds which enabled the work to be completed.

In addition to the roof, finished in November 1994, a new kitchen has been installed, both toilets have been refurbished, and double-glazed windows, complete with curtains, have been fitted.

The cost of all the work was in excess of £16,500; grants of £3,000 were received from Hughenden Parish Council and £1,100 was subscribed by villagers. The remainder was raised by the various events held in the Hall. This is a wonderful achievement by such a small community (about 80+ households). Congratulations to all who were involved.

Fundraising will have to continue during the coming year, as there is still much to be done, so please continue to support the events which will be organised during the coming months.

If you have a party or social gathering which may be too large for your own home, then remember the Village Hall is available for hire; with village residents being afforded very favourable rates.

Megan Chinn is the Booking Secretary and she will give you any information you may require; her number is 563074.

I hope to meet many of you at North Dean Village Hall during 1996.

JOHN ROGERS

Horse riders and friends have Christmas fun at North Dean.

The newly refurbished North Dean Village Hall provided an excellent venue for a lively Christmas Bar Dance on Friday 15th December. was for the Riding For The Disabled Group.

A delicious Fish n Chips Supper provided by Speen's Poppy and Gordon Ellis, was voted best around by Ray Smith from Naphill. He kindly came along to provide music and expert instruction for the dancing.

Ray also brought with him Chally his now retired Hearing Dog for the Deaf, who happily joined in. (Gloria doesn't say whether Chally specialises in singing or dancing or was it just eating fish and chips - Ed)

A raffle was held to support this worthwhile charity. Festive mince pies, generously donated by Tesco, rounded off a tasty supper and successful evening.

The new branch of the Hig Wycombe Riding For The Disabled group recently started its weekly riding sessions at Shana Ridin School, Naphill, by kind permission of Richard and Joanna Huggar who provide excellent facilities and well-trained horses. The riders enjoy their new challenge in a relaxed and happy atmosphere with friends and helpers from the locality.

Gloria Holmes

and thanks from the newsletter

Hooray! - we can now think about getting a few things out of pawn thanks to Gloria Holmes and Jean Baines of Speen and Gill Kent of North Dean who ran a Fun Bridge event at North Dean Village Hall in aid of the newsletter. Thanks also to those residents and friends who came along, raised £95, while playing cards, consuming soup and sandwiches and generally having a good laugh and chat.

I understand that they enjoyed it so much that a similar event is pencilled in for sometime this coming Spring.

Letters To The Editor



Dear Editor,

As editor of the Speen and North Dean News you invited me some time ago to write an article for you to publish in the local magazine. In view of the current developments regarding neighbourhood Watch and comments recently made by yourself in your recent newsletter, I feel that now is an appropriate time to put pen to paper.

Firstly and most importantly I would like to bring to everyone's attention that dwelling house burglaries are once again on the seasonal increase. Unfortunately it isn't just the law-abiding people who shop early for Christmas. It's a sad fact of life, but the criminal element choose to do their shopping in people's homes.

Some of your local neighbours are actively trying to do some good in the village by increasing Neighbourhood Watch schemes. The Area Co-ordinator, if you don't already know, is Jackie Newman. The police need the help of local people to catch criminals and Neighbourhood Watch is a valuable asset. Neighbourhood Watch is about looking after each other. Look around and you'll see just how many of you are vulnerable to these people. Jackie and her colleagues are dedicated in organising these schemes, but they need support from the residents of Speen.

It would be nice if more people could become involved. This magazine has tremendous potential to encourage the support and unity the village needs for these schemes to work. It would be a great pity if the magazine is allowed to degenerate into a political stick to beat people with when they don't agree with everything that's said.

This type of attitude only makes small village communities such as Speen, divisive when we should all be trying to help each other.

Nobody will be criticised for making a false alarm call to the police if their intentions are good. If anyone sees anything which is slightly suspicious they should contact the police without delay on 01296 396000 and also let some in the Neighbourhood Watch Scheme know as well. Should the caller consider it to be urgent, nobody will criticize the use of the 999 telephone call. If it is obviously not a 999 situation, the worst that will happen is that advice will be given regarding the future use of these calls.

The Aylesbury police area now has a new crime prevention display caravan. I'm hoping it won't ruffle too many feathers if I can find somewhere in the village to site it for a day. Arrangements have been made for us to have it available in the New Year. I will be liaising with Jackie and fellow co-ordinators regarding this and would welcome suggestions as to the most suitable location. Its minimum dimensions are 22' x 12' and it needs to be towed by a police transit van, which gives an indication of the size of site needed.

On a personal note - I would like to respond to the comments made with regard to my recent proposal to build in Flowers Bottom Lane. They say the least said the soonest mended, so I won't say what would be a fitting remark to your latest newsletter. However I feel I should set the record straight and let you know that my original application was

submitted purely on planning grounds following advice from several people, other than MRS GABBITAS, who have planning connections with Wycombe District Council and a qualified Town and Country planner.

When I submitted my appeal, it was I who took the trouble to notify the local residents, asking for their comments either for or against. I also made a point of asking the same of MRS GABBITAS. She informed me that she would make

her opinions known regarding the planning application. However she made it quite clear that her opinion would be based on the majority of local opinion and on planning matters.

Despite your comments, the appeal was well advertised and virtually all of the residents of Flowers Bottom Lane, Turnip End and the whole of Highwood Bottom responded. Of these, 17 in Flowers Bottom Lane contacted the Residents Association, with over half writing letters to the Appeals Inspectorate. With regard to those who supported me, these totalled 30 residents of the area, all of whom wrote letters of support to the Inspectorate.

Whilst I have been dealing with my appeal, I have learnt a great deal about the character of some of the local people and a good deal of the local history. Although my appeal has failed on this occasion, I take comfort from the fact that the majority supported me. With regard to the few who opposed me, nothing they have said has deterred me from wanting to live in the area. I realise that they were acting with the best of intention; all I would say to these people is had our forefathers had the same negative attitude to planning matters they would not be as fortunate to live in such pleasant surroundings. Had they expressed similar views, the character of villages such as Speen would not exist today.

Despite this personal setback I have made a lot of friends through my efforts and intend seeking an alternative site. I hope the remaining residents of Flowers Bottom Lane will approve of my next application and we shall eventually live together as good neighbours.

Yours faithfully,

Brian W. Price

Thame, Oxon.

PLEASE NOTE

The views and opinions expressed in Speen and North Dean News do not necessarily reflect those of the editor and he reserves the right to edit as necessary.

SPEEN TABLE TENNIS CLUB

The High Wycombe and District Table Tennis Competition 1995 - 6 has reached its half way stage.

Speen entered four teams. All of these are competing well; Speen D in particular. The team is second in its division, with a match in hand on the leaders. An unusual feature in this team, believed unique in the Wycombe League, is its partnership of a grandson (Richard Peake, aged 14, of Hampden Road) and his grandfather (Gordon Locke) - with excellent playing results.

Speen C (captained by Peter Clarke, of Springwood, Speen) has also turned in a meritorious performance. Promoted to a higher Division this season, they are well up in contention with the leaders.

Richard Peake (mentioned above) was selected to represent High Wycombe in the Bucks County Inter-Town Youth Tournament in December, held at Milton Keynes. High Wycombe won the Tournament and Richard played a significant part in this success, winning 6 of his 7 games.

Jimmy Lawrence, one of Speen's oldest 'sons', and known throughout the League, is still turning in a good performance, and looks like doing so for years to come!

GORDON LOCKE

FOOD N STUFF AT THE WI

Salmon en Croute and a Meringue Cake were on the menu at our October meeting, when Joy Davies demonstrated how to prepare these delicious dishes. Due to the time factor, the Salmon was left to the winner of the raffled dishes to cook at home, but the Meringue Cake was put in the oven to cook. However, due to the Village Hall cooker playing up, it didn't cook as well as it might, although it looked pretty good.

The lucky winner of the Salmon was Mrs Muriel Groves. Later in the month, some of us went to the Civic Centre, Aylesbury, to see 'Fancy That', a Review put on by Bucks WI Members. Ed's wife and our President were taking part and we thoroughly enjoyed it.

The Night We Nearly Closed Down

In November it was the Annual Meeting, when Christine Oliver hoped to pass on being President to someone else. Unfortunately no-one else wanted to step into her shoes - sorry Christine - and as we would have had to close down our WI without a President, Christine agreed to do it for one more year only.

After the meeting we partook of a delicious Pot Luck Supper. The following week some of us went to the first night of 'Me and My Girl' and what a super show it was! Then on the 9th, twenty or so of us

drove up to just outside Waddesdon, to Hunters Farm Shop. This was a special evening opening just for us. After we had browsed round the clothes, fancy goods and Christmas goodies - and spent all our money, we retired to the dining room where, in front of a roaring fire we had a super Lasagne and salad supper, cooked by our hostess's daughter, who usually cooks for posher folk. (This isn't laid on for daytime shoppers of course).

Only The Village Hall Team could Beat Us

In December, while we supped on mulled wine, Mrs Claire Short introduced a beautiful array of Christmas stockings, table ware, jewellery, etc., all stitched by herself; a very talented lady. After that we partook of mince pies, sausage rolls and other goodies made by the committee. The following week we did our Carol singing bit around the village, this time collecting for diabetics. And, of course, we mustn't forget the Village Quiz (which I almost have) when we came second.

For our future entertainment, we are playing games in January, learning about Reflexology with Mrs J. Coley, on 1st February and Chinese Brush Painting with Mrs M. Nash on 7th March.

Give Us a Tryout

Any ladies wishing to get out for one evening a month are most welcome to spy out the land at one of our meetings. You will be made most welcome.

barbara collett

SPEEN AND NORTH DEAN GOOD NEIGHBOURS

This is a group of local volunteers prepared to help anyone in the community who may have a need for their services.

The services may include, for example:

Shopping, hospital visits, baby sitting, emergency repairs, support for the bereaved, lonely and recently discharged hospital patients, plus welcoming new residents to the village and other needs.

How does the scheme work? Well if you need help, you could telephone one of our receptionists who would give you three alternative names and phone numbers of volunteers to ring with your request. Please call for help between 8 and 9am or 6 and 7pm.

The receptionists are Doris Wilson 488334
Margaret Jones 488246
Poppy Ellis 488548

Any payment for services should be arranged between individuals. A contribution of £1 per journey is suggested for the transport services. Car owners must check that they are insured to carry passengers. Users of the service do so at their own risk.

For further information from Gloria Holmes phone 488420



*Brrrrrave
Beyond the call
of duty.*

WI Members about to
set forth on their annual
carol singing tour of Speen.

From their smiles, you would
never guess it was cold and
raining!

Lacey Green Parish Council are also in
this project - contact George Crombie, 488240

HUGHENDEN

PARISH PATHS
PARTNERSHIP



Do you enjoy walking and riding your local paths and bridleways?
Would you or your group like to get actively involved in
maintaining and improving local paths and promoting their use?
for further information on The Parish Paths Partnership in
Hughenden and how you can help

PARISH PATHS
partnership
A COUNCILSIDE COMMITTEE INITIATIVE

PLEASE CONTACT: Mrs. Lyn Turner
Hughenden Parish Council 01494 715296

DOREEN STEWART WOULD LIKE TO THANK THOSE OF YOU WHO
SUPPORTED HER CABOUCHON BUSINESS, THAT WAS LINKED TO
TWO CHARITIES IN NOVEMBER & DECEMBER. £50 WAS RAISED FOR
WYCOMBE'S VICTIM SUPPORT & £25 FOR MACMILLAN NURSES. IT
WAS ALSO GREAT TO SEE MARIE HOLMES, FROM CHAPEL HILL, WIN
ONE OF THE ZEBRA BROOCHES DONATED TO THE LIMITED
EDITION'S CHRISTMAS PRIZE DRAW.
IF ANYONE ELSE HAS A FAVOURITE CHARITY & WOULD LIKE TO
WORK WITH DOREEN TO RAISE SOME FUNDS, THEY SHOULD RING
HER ON 488274.

Thankyou for your help, Irene

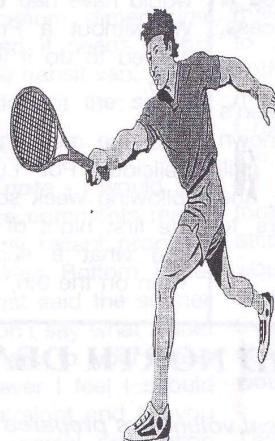
Yours sincerely

Doreen Stewart

Doreen Stewart

AND THANKS TO IRENE, ALSO,
FOR HER WORK ON THE SPEEN
& N. DEAN NEWS. SHE IS GIVING
IT UP IN THE SPRING I REGRET TO
SAY *ka* ED.

SPEEN TENNIS COURT



Now that Christmas and the New
Year are behind us, it is the time to
be thinking of Spring and the better
weather and the chance of shedding
those extra pounds. What better way
than dusting off the tennis racket and
getting out on court. We have
excellent facilities in Speen and we
look forward to seeing all our
regular players and new members
out on court in the forthcoming new
season.

FOR FURTHER DETAILS
CONTACT - ROGER CRAFT
Telephone 01494 488343

some future events:

| | | | | |
|---------|-----|--------------------------|---------|---------------------------------|
| Sat 13 | Jan | North Dean Village Hall | | Senior Citizens Lunch |
| Tue 16 | Jan | Speen Village Hall | 7.30pm | Neighbourhood Watch Talk |
| Sat 20 | Jan | Lacey Green Village Hall | 8.00pm | Twinning Association Quiz |
| Sat 20 | Jan | King Wm. Car Park | 10-4pm | Police Crime Prevention Caravan |
| Mon 29 | Jan | Cherry Dell (Gloria's) | 10.30am | Good Neighbours Tea and Chat |
| Thur 1 | Feb | Speen Village Hall | 7.45pm | WI Reflexology (Mrs Coley) |
| Sat 10 | Feb | Speen Village Hall | 8.00pm | Jazz Evening |
| Thur 29 | Feb | Pink and Lily | | Twinning Association Supper |
| Sat 2 | Mar | Piggotts | | North Dean Spectacular Dance |
| Thur 7 | Mar | Speen Village Hall | 7.45pm | WI Chinese Brush Painting |
| Sat 23 | Mar | Lacey Green Village Hall | | Twinning Association Social |

some telephone numbers:

| | | |
|-----------------------------|----------------------|--------------|
| BAPTIST CHURCH | DAVID KING | 01844-344839 |
| Sunday 10.30am | | |
| CUBS | CLIVE ROWLAND | 488779 |
| Wed 6.30 - 8.00pm | | |
| CRICKET | MIKE BOUNDS | 488572 |
| FETE | PETER DAWSON | 488222 |
| GOOD NEIGHBOURS | GLORIA HOLMES | 488420 |
| (Receptionist) | DORIS WILSON | 488334 |
| (Receptionist) | Margaret Jones | 488246 |
| (Receptionist) | POPPY ELLIS | 488548 |
| GUIDES | PAULINE HALL | 488372 |
| Thursdays | | |
| HORTICULTURAL | TED DREW | 488738 |
| N.DEAN VILLAGE HALL | JOHN ROGERS | 562041 |
| PARISH COUNCILLORS | DON WHITE | 488437 |
| | JUDE AWDRY | 488607 |
| PLAYGROUP | | |
| Hall termtime 9am - 12pm | | 488160 |
| Other times | ANNABELLE PATCHING | 562895 |
| PLAYING FIELD | JEANNE HANFORD | 488402 |
| POLICE | | 01296-396000 |
| SPEEN DISTRICT COUNCILLOR | JEAN GABBITAS | 01844-346469 |
| SPEEN SCHOOL OFFICE | | 488321 |
| SPEEN PARENT TEACHERS | AMANDA CLEAVER | 488288 |
| | PAUL & ALICE CORRICK | 565380 |
| SPEEN VILLAGE HALL BOOKINGS | CATHERINE BUTLER | 488412 |
| SPEEN RESIDENTS ASSOCIATION | PAUL ROGERSON | 488315 |
| SPEEN & N. DEAN NEWS | PETER DAWSON | 488222 |
| SPEEN & N. DEAN YOUTH CLUB | ROB & TRICIA LENKO | 488337 |
| SPEEN NEIGHBOURHOOD WATCH | JACKIE NEWMAN | 488474 |
| TABLE TENNIS | JIM LAWRENCE | 01844-344610 |
| TENNIS | ROGER CRAFT | 488343 |
| THEATRE CLUB | SHEILA TIDBALL | 488377 |
| W.I. | BARBARA COLLETT | 488348 |
| (1st Thur each month) | | |

POST OFFICE Every Tuesday 12.30 - 2.30 pm at Speen Village Hall

LIBRARY BUS Every second Monday 10.20 - 11.00 am Bus Stop top of Hampden Rd.

Who will benefit from your lifetime's work? Your family, or the tax man?

Inheritance tax can be a terrible burden on those you love. Without proper protection your children's financial futures could be adversely affected. At Allied Dunbar, we'll work with you to design a financial plan that ensures your family are the people who benefit from your will, rather than the tax man.

Call me today on **01494 441442** or return the coupon below. Together we can make sure your family's financial future is secure.

For the life you don't yet know



**ALLIED
DUNBAR**

to: **Jeff Leeks** FIPM Financial Planning Consultant. 40 Oxford Road, High Wycombe, Buckinghamshire HP11 2EE.

representing only the Allied Dunbar Marketing Group, which is regulated by the Personal Investment Authority, in relation to life assurance, pensions and investment plans bearing Allied Dunbar's name.

Please contact me to discuss my own and my family's financial needs.

Name

Address

.....

Postcode..... Telephone