



Speen and North Dean News

Issue 2

October 1994

PARISH TWINNING ASSOCIATION

English Teach French the Gay Gordons!

44 of us were in Hambye for the 50th anniversary of their liberation for a tiring, crowded but superb weekend. The coach party, having left Lacey Green at 4.45 am arrived in Hambye about 4.30 pm with time to meet our hosts and have a short break before the evening business. We all attended a ceremony where medals were given to war veterans and the road near Le Prieure was renamed Route des Allies, the Hambye queen and her maid received their sashes and a vin d'honneur was provided at the Maison Bruhot. Then to the Salle des Fetes for dinner with entertainment by a New Orleans Jazz Band, and an extremely popular spot provided by Allan Ryde, ex-Seaforth Highlander in full Scots rig, who played the bagpipes. To see the English trying to teach the French the Gay Gordons was quite an experience! We presented a trophy to the people of



Hambye which they have decided to award for a tennis competition, and books for their library. The evening finished at 1am by which time we were fairly shattered.


On Sunday Brian Panter, ex RN, laid a wreath on our behalf at a ceremony at the War Memorial, standard of the Royal British Legion were carried by Budge and Phyllis Horne, and Allan played a lament on the pipes. This was followed by a choral mass and then everybody went back to the village centre in procession, veterans in a jeep, the Hambye band, flags and banners, the Queen and attendants, Allan and his pipes, for a vin d'honneur in the hall. After a protracted lunch with our hosts it was back for the afternoon procession, with military bands, children in Red

Cross and Airforce uniforms, and a splendid float for the Queen. The day again finished late with a firework display.

On Monday we left at about 8.45 am with Allan playing the pipes in front of the coach, and visited a war cemetery, Bayeux for visits to the cathedral or tapestry, and the supermarket at Cherbourg for essential shopping. We arrived back in Lacey Green at 10.30 pm.





**STEPPING
STONES** 
(Emp. Agy)

Nannies
Maternity Nurses
Mother's Helps
Au Pairs

Louise Vincent

P.O. Box 117, Henley-on-Thames Oxon RG9 1SY
Tel: 0491-577076

| | | |
|-----------------------------------|------------------------|---------------|
| BAPTIST CHURCH | - Rev Charlie Radburn | - 488758 |
| Sunday 10.30 am | | |
| BEAVERS | - Margaret Gray | - 0844 347094 |
| Wednesday 5.15 - 6.15 pm | | |
| CUBS | - Roo Marshall | - 881766 |
| Wednesday 6.30 - 8.00 pm | | |
| FETE COMMITTEE | - June Rowland | - 488779 |
| FOOTSTEPS CLUB | - Charlie Radburn | - 488758 |
| Wednesday 6.15 - 7.30 pm | | |
| GOOD NEIGHBOURS | - Gloria Holmes | - 488420 |
| GUIDES | - Pauline Hall | - 488372 |
| Thursdays | | |
| HORTICULTURAL SOCIETY | - Ted Drew | - 488738 |
| MOTHERS AND TODDLERS | - Christine Dunnington | - 488203 |
| Tuesday 10.00 - 11.45 am | | |
| NORTH DEAN VILLAGE | - Megan Chinn | - 563074 |
| PARENT TEACHER ASSOCIATION | - Alice Corrick | - 565380 |
| PARISH COUNCIL | - Don White | - 488437 |
| | - Jude Awdry | - 488607 |
| PLAYGROUP | - Leader - Julie Dench | - 436306 |
| | - Viv Goldie-Jones | - 443570 |
| | - Melanie Page | - 488677 |
| Daily 9.30 -12.00 am | | |
| PLAYING FIELDS ASSOCIATION | - Jeanne Hanford | - 488402 |
| SCOUTS | - Bill Constable | - 483706 |
| Monday 7.30 - 9.00 pm | | |
| SPEEN SCHOOL | - Denise Nayna | - 488321 |
| TENNIS COURT | - Roger Craft | - 488434 |
| THATS LIFE | - Rachel Radburn | - 488758 |
| Sunday 7 - 9 pm | | |
| THEATRE/OUTINGS CLUB | - Sheila Tidball | - 488377 |
| VILLAGE HALL COMMITTEE | - Stan Bale | - 488015 |
| W.I. | - Barbara Collett | - 488348 |
| 1st Thursday of every month | | |
| YOUTH CLUB | - Bex Lawrence | - 488758 |
| Friday 7 - 9 pm | | |

LIBRARY BUS - Every 2nd Monday (next one 10th October) 10.20 - 11.00 am- Bus stop top of
Hampden Road
POST OFFICE - Every Tuesday 12.30 - 2.30 pm - Speen Village Hall

EDITORS LETTER

Welcome to Speen and North Dean News. Thankyou for all your good wishes following the births of issue 1 and Anna!

Once again the standard of articles received for this edition is very high and the range has spread which is brilliant. This edition sees the advent of poetry and many other pieces from individual villagers, lovely - keep them coming. (you can provide your own pics, drawings and photos in black and white for inclusion) (please note; copy date for next issue is 1ST DECEMBER 1994).

Special thanks are due to **Stokenchurch Youth Centre** for use of their printing facilities, to **Charlie Radburn** for the layout and photos, and to **Caroline Partridge of Ashton, Studridge Lane**, for taking on the treasurer's position.

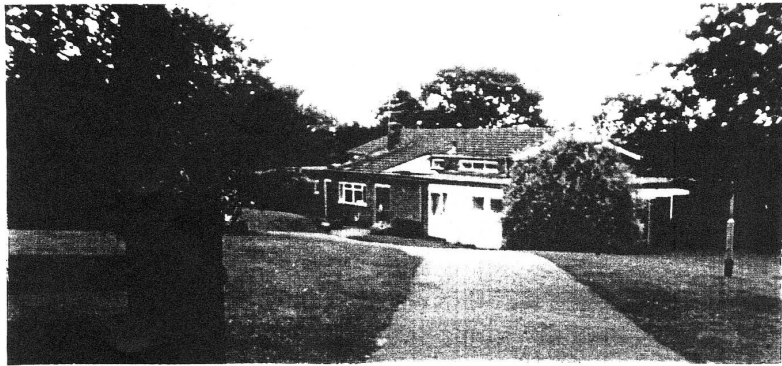
We have two pleas for help this time, firstly **CALLING ALL PIANISTS** Gloria Holmes keeps a rota of musicians for Speen Church and needs to add to it, if you feel you could help on Sundays from 10.30 for about an hour or in an emergency please contact her on 488420.

Secondly, if anyone fancies getting into publishing and distribution, Speen and North Dean News would welcome help and gladly offer "hands-on" training. You'll find it very rewarding contact me on 488758 for more details

RACHEL RADBURN - EDITOR

PLEASE NOTE

The views and opinions expressed in Speen and North Dean News do not necessarily reflect those of the Editor and she reserves the right to edit as necessary.



Speen First School Snippets

Pupils from Speen First School put on their dancing shoes to entertain fete goers in Speen and North Dean this summer. More than 20 children from years two and three performed country dancing and maypole displays at this year's village fetes.

Ed. Well done to you all, both days were incredibly hot so I hope you all had a well deserved cold drink and rest afterwards

Children for Speen First School proved an even match at the School's annual "It's a

Knockout" competition. After taking part in a mini assault course, designed by some of the older children, both school teams scored the same number of points!

Speen First School children joined other small schools in the district for a fun day at John Hampden School. It is the first time such an event has taken place and some 300 children enjoyed a day of music making, with the help of Wycombe Music Centre, drama and sport

THEATRE / OUTINGS CLUB

Our new year started with a trip to see "Macbeth" at Osterley Park in early September. We are booking for an evening on 22nd October at The Mill at Sonning, for dinner and to see a performance of "The Reluctant Debutante." If you'd like to join us please contact **Sheila Tidball** on 488377.

For the autumn and winter, we hope to book for opera in Oxford and drama in London. We'd like to hear from you about what you'd like to see. We are thinking about booking for "A Christmas Carol" at the Barbican, a carol concert, a backstage tour of



Drury Lane Theatre, and "Singing in the Rain" at Oxford - Please let us know if you approve of our choice.

Anyone who would like to join our group would be welcome. Sheila deals with membership and would be happy to receive your cheque (£6 for individual and £12 for family membership.) If you aren't a member but would like to come on any of our trips, there may be ticket available if members have not already booked. Please enquire from **Sheila** or **Jo Keatch** on 488629. We look forward to hearing from you.

SHEILA TIDBALL

JENKINS NEWMAN

Partnership



**ESTATE AGENTS
VALUERS, SURVEYORS
AND FINANCIAL ADVISERS**

THE ULTIMATE SALES TEAM

**Specialising in the sale of properties in
Speen, North Dean and the surrounding villages**

**Offices at: 27 Crendon Street, High Wycombe Tel: 0494 528000
and Hazlemere Crossroads, High Wycombe Tel: 0494 716000**

EFFICIENT, PROFESSIONAL & INDEPENDENT

Fun Camp At Piggotts



Summer camp this year was from 11-13th July in the lovely sunshine at Piggotts, North Dean for the High Wycombe Riding for the Disabled Group. Seven young boys and girls stayed for two nights and with many willing helpers, packed in lots of riding as well as other varied activities.

After arriving on Monday night and settling in, Tuesday morning started with lots of riding and instruction. Great improvement was seen in all the children's abilities and the next day they all took and passed their Grade tests. They were delighted to receive

rosettes and certificates which they proudly showed their parents.

After a good nights sleep - due both to hours of riding the day before and hours of talking the night before, other activities took place on Wednesday. A craft morning involved watching a potter make a jug and bowl then each child made their own enamel necklace with the help of Mrs Ayling who was a big hit with everyone. A visit to the local dairy farm preceded lunch and later in the afternoon we were shown round Booker Air Park, the children were allowed to sit at the controls of a small parked plane. After a musical

riding display for parents and friends and a tasty barbecue, seven very tired children (and many worn out helpers!) travelled home.

In the R.D.A. Silver Jubilee Year this proved to be a very happy and successful camp - Roll on next year.

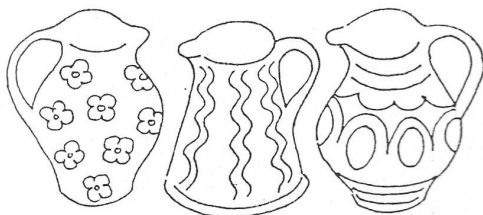
If you would like to help with our weekly sessions we're looking for cheerful, reliable people to lend a hand with the ponies or children on Tuesdays, during term time from 12.30-2.30pm at The Grove, Lane End, High Wycombe.

For further details contact
Gloria Holmes - 488758

SPEEN POTTERY

Tel: (0494) 488 206

DECORATIVE
EARTHENWARE by Tessa Rubbra



The track leading to SPEEN POTTERY runs down a lovely secluded valley just outside the village of Speen (near the Old Plow). The Pottery and Showroom is part of an old cottage with a delightful garden. There is parking space at the pottery.

On display in the showroom are examples of beautifully coloured and fine tableware. Special Commemorative Plates and Bowls can also be made for Wedding Presents, Anniversaries, and other occasions that need to be remembered.

The Pottery is open every day, but if you want to see Tessa to discuss an order it would be advisable to ring before coming.

Tessa Rubbra : Valley Cottage, Highwood Bottom,
Speen, Bucks. HP17 0PY

CUBS WELCOME 1ST GIRL MEMBER

Since the last newsletter things have continued to progress and at the finish of the summer term we had approximately 12 members in each of the three sections ie Beavers - Cubs - Scouts.

The Beaver numbers are the most gratifying as a healthy beaver section makes for a good foundation upon which the other sections can then build.

At the start of term the beavers and cubs held a "going up" ceremony at which the cubs welcomed their first girl member from the beavers.

For anyone interested in wanting their children to join one of the sections the contact phone numbers are:-

Beavers (6 - 8 years)

(Wednesday 5.15-6.15pm)

Margaret Gray

0844 347094

Cubs (8 - 10.5 years)

(Wednesday 6.30-8.00pm)

Patrick Marshall

0494 881766

Scouts (10.5 - 15.5)

(Monday 7.30-9.00)

Bill Constable

0494 483706

We are always looking for adult helpers, either in or out of uniform, male or female, aged 18-65 (especially at the year old end of the age group).

Stuart Stansfield

Group Scout Leader

0844 344005

Chiltern Music Services



Keyboard and Guitar lessons are available locally for beginners and improvers.

If you have always wanted to play an instrument or improve on your present performance then give me a call. Maybe your son/daughter needs extra music tuition for school work.

Advice is also available on the selection of suitable instruments.

For further details phone Alan Peppett at Chiltern Music on the number below.

**"Byways", Goodacres Lane,
Lacey Green,
Princes Risborough,
Bucks. HP27 0QD**

Telephone: (0844) 346261



FLORAL CRAFTS

NEW ROAD, WALTERS ASH, HIGH WYCOMBE
(entrance by SHANA SCHOOL OF RIDING)
Telephone: NAPHILL 563551

Flower Craft Shop

ARTISTIC FLOWER ARRANGEMENTS, SOFT TOYS,
EXCLUSIVE GIFTS, GREETING CARDS, ETC.

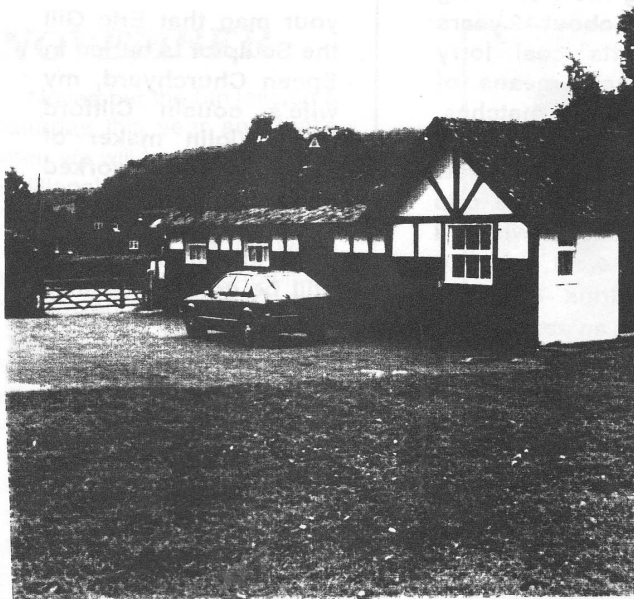
Wedding Flower Studio

BRIDAL BOUQUETS, HEADRESSES, etc.
CHURCH and RECEPTION FLOWERS
FRESH FLOWERS to order

SILK FLOWER DISPLAYS FOR HIRE

OPEN: Weekdays 9.30 a.m. to 5.30 p.m.
CLOSED: ALL DAY WEDNESDAYS





dell brothers

Builders, Developers, Plumbers
and Decorators

EST.1948

LACEY GREEN, BUCKS.

Tel: 0844 344342/346688

MEMORIES OF AN OLD CODGER

North Dean is one of the last of the unspoilt Villages left in the area, walking along the road on a lovely sunny afternoon brought home to me how lucky we are to live in such a beautiful part of the country.

The last fifty years has seen comparatively little change, a few infill houses, which has benefited the village by adding to our tiny population. The hedges still border the road, a little taller perhaps, but better maintained, the green fields behind, slightly brown from the hot summer, but still able to support the herds of cows that have been part of Village life as long as I can remember. The skyline is dominated by our woodlands, which are our heritage and have supported the local furniture industry in the past and in particular our local turnery, alas no longer functioning, but providing memories of by young days. Where in the world can you see such beauty as trees changing through the four

seasons, from the vibrant green of the new life in the spring to the mature and various greens of summer, to the yellows and browns of autumn, to finally the snow laden branches of winter, I rest my case.

Walking further along Speen Road, Speen Road????, when this was added to the North Dean postal address, there was an uproar in the ranks of the older population, what has Speen got to do with North Dean was said, and one old chap said to me, I don't care if I never get another letter I will not have Speen Road on my address, but of course it was gradually accepted and now used with out question.

Not that there was ever any ill feeling between the two Villages, just the reverse really, we all shared the same teachers at Speen School, right through to school leaving in those days, unless you had progressed to greater heights of the Technical and Grammar Schools in High Wycombe

The Youth Club in North Dean was a regular meeting place for the youth of both Villages, and many lifetime friendships have been formed from both places. The YPF at Speen Chapel, run by Roy Bristow was also a club where we spent many happy hours in the evening, and at weekends, not only learning the word of our Lord, but also enjoying both indoor and outdoor pursuits, some times sharing these pleasures with other clubs for other Chapels. An Annual return visit with a Chapel from London was a highlight of the year, when we played cricket against them, and held numerous competitions whether here or in London. Can anyone remember Hamlets United, a football team made up of boys from North Dean, Speen and Hampden, not very successful as I remember, being beaten one week 25 to 0 by a team from Wycombe Marsh, but always came back for more the next week.

Another tie with Speen was Wally Woods, the forerunner of the modern Disco, together with Bill Floyd, he brought his records and equipment to North Dean, and indeed to most other Halls in the area on a Saturday night and we danced the night away, all for the princely sum of one shilling and sixpence, no alcohol was allowed but the pub was next door in those days.

The Sportsmans Arms, memories of my first drink, after helping in the fields of the farm during the war, or that nectar of the gods after a hard game of cricket, a drink has never been quite the same since the pub was closed down. The pub wall was a favourite meeting place for the young lads and lasses of the village, many a tale that could tell! Saturday lunchtime was a highlight of the week, when the Stop Me and Buy One ice cream tricycle arrived, we all enjoyed and ice cream while the ice cream man went into the pub for a pint.

Leaning on the playing field gates, the field looks little different than it always has, except for the new playground equipment, which has replaced the sixty year old swings. Like the grass memories have grown over the years, the fete has expanded from a few small stalls with a cricket match as entertainment to what it is today, the fireworks evening, which was a favourite for many years but had to stop because of the cost of fireworks, pig roasts, barbecues, and many special events which over the years have included Coronation and End of War celebrations. Cricket on the field was a Saturday attraction for most

of my young life and being part of it from about 12 years old, Bill Hatts coal lorry being the main means of transport to away matches. North Dean was an average team and won very few trophies, the war time cup was one success which I remember well, being allowed to drink from the cup filled with an assortment of beer and spirits, my first hangover I think. Sadly we no longer have a cricket team, but are hopeful of one being reformed in the future.

Memories can be great for the people concerned, but can be a bore for those not involved, I hope a few of you reading these will be able to enjoy sharing a few thoughts from the past.

ED. Who is the old codger??

Memories of another old codger!

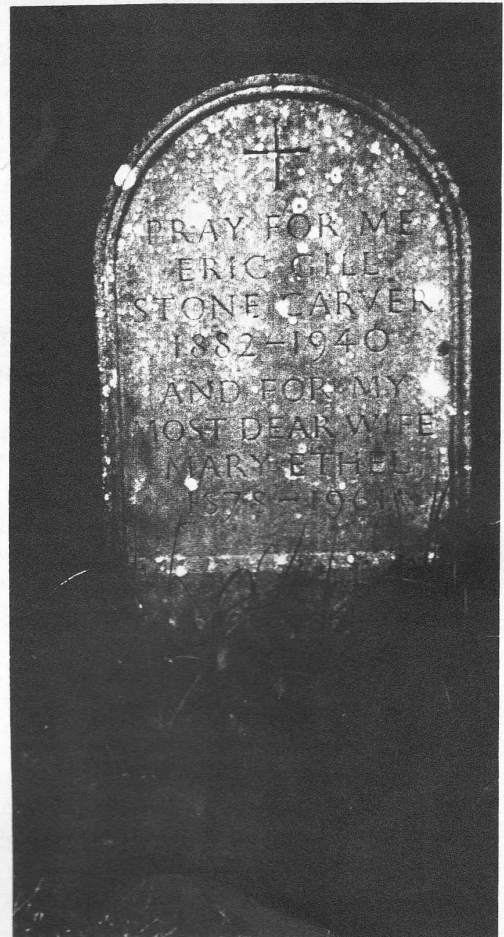
I have been coming back to this part of Bucks with my wife for over 60 years. My wife was born in High Wycombe nearly 84 years ago and we were married in Great Hampden Church nearly 60 years ago.

The reason for writing this article is we have always been interested in village names, who was Moses Plat and where did the name Grubbins and Studridge come from? My wife spent her early life living in Bledlow Ridge another interesting name.

I understand from your mag that Eric Gill the Sculptor is buried in Speen Churchyard, my wife's cousin Clifford Haig, Violin maker of High Wycombe worked under him at one time.

My wife passed away in March but I will still be coming back to the area, it holds many happy memories for me. Life seems to go at such a pace today that we don't have time to appreciate the lovely countryside or the history that goes with it.

Written by Mr A P Wilson - Boundary Cottage, Aerodrome Road, Bekesbourne, Canterbury, Kent CT4 5EX, (he is uncle to Mary Jackson of Springwood, Speen)



REMEMBER REMEMBER

THE 5TH OF

NOVEMBER

November the 5th falls on a Saturday this year and that's when we will be putting on our traditional Village Bonfire and Fireworks Party/Night.

Sometimes, like me, when we're trying to fit in organising these events or keep up with the jobs on the field, I know my colleagues on the Committee ask themselves "Why do we volunteer for this!?"

The answer I think comes poignantly when we join all of you - our friends, neighbours and acquaintances together in the village to enjoy themselves and know that we provided the opportunity to do this. With out your support and the efforts of all the Committees who have gone before us, we wouldn't have a pleasant green space in the centre of our village and as temporary custodians we are happy to give time and effort to keep it that way. There are actually lots of non-committee members who help us to prepare the food on Bonfire night and I would like to take this opportunity to thank them and ask for their help once again - I'll be in touch nearer the time!

So please don't be tempted away this year by the big professional displays. To get a discount on the fireworks (and they still cost almost £400) we have to order them way back

in May and pay for them in October, so please buy a ticket and come along - we're keeping the prices the same - £3 for adults and £1.50 for children. We will start building the bonfire on the weekend of 29/30 October. As always, you are welcome to bring along your tree prunings and suitable combustible material. Just a couple of things we would ask you - Please don't bring anything until the "tunnel" is built and when you do please

try to build it up as high as possible as its an awful job trying to restack it; and please think carefully about what you put on. We are responsible for your safety when the fire is lit - in the past we have found aerosol cans and even an old hoover last year.

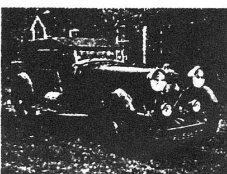
Last but not least, thanks to those people who came to our recent Pub Night - the next one is on Saturday 19th November.

JEANNE HANFORD - 488402



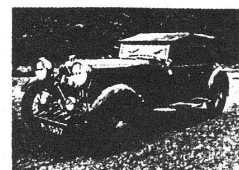
SPECIAL OCCASION!

Vintage and Classic Car Hire



- ★ Chauffeur Driven Vintage Lagonda, and Beetle Cabriolet available.
- ★ Weddings, Special Occasions, Social Events and Birthdays.
- ★ Competitive Value and Personal Service Assured.

Ashleigh, 183 Main Road, Naphill HP14 4SD — 0494 563188



THE OLD PLOW BISTRO AND RESTAURANT AT SPEEN



RECOMMENDED BY :

THE ACKERMAN MARTELL GUIDE 1994

THE GOOD FOOD GUIDE 1994

THE EGON RONAY GUIDE 1994

THE MICHELIN GUIDE 1994

THE SUNDAY TIMES

**The Old Plow Bistro and Restaurant at
Speen, still owned by Olivia and Malcolm Cowan.**

**Reservations for the bistro and restaurant can be
made on (0494) 488300.**

FOLLOW THE MAKERS INSTRUCTIONS

"ALL STRESSED OUT" Apparently is the "cool" way of describing what many of us suffer from, the tendency of "us moderns" to be overloaded.

The problem has received much publicity of late, and most of us are now aware that "a little stress is good and can be motivating but that too much is positively harmful."

In the past I've tended to acquire (as many of us do when we begin motoring,) a string of old bangers to drive around in. One in particular was troublesome, and after I'd stopped the car and turned the ignition off the engine simply carried on turning over - "running on"! I understand that the engine cylinders can get so hot they act like spark plugs and keep igniting the fuel! If left it would simply seize up!

This is similar to what we are can do to ourselves. Eventually we overheat and can't seem to switch off. The common experience of "winding down" on holiday illustrates clearly how long it can take! If we don't take a break we just seize up.

Fortunately, God gave us a mechanism by which this scenario can be avoided. In fact he gave a holiday every week! a day when we can wind down completely.

Ministers of the church work on Sundays, so they



usually choose another whole day, Saturday or Monday or something. Exactly which day isn't terribly important, as long as you do it.

But how about you? Have you taken notice of the "Makers Instructions"? (Statistical studies of societies that don't have a rest day a week indicate that productivity is the same as a 6 day working week! We aren't made to work 7!)

We all need a break, every week, a holiday (holy meaning "set apart as different from the rest")

Jesus, on one of his busy working days told his disciples to "come apart and rest awhile." So they took a boat trip across Lake Galilee and found a quiet spot!

At Speen Church (Sundays 10.30 am) we can "come apart and rest awhile", find quietness and healing, and maybe find a few more of the makers excellent instructions thrown in.

If we don't we may just plain "come apart"!

Contact: **REV CHARLIE RADBURN** - 488758



Rail Strike Hits W.I

Having spent a couple of months looking forward to visiting Chester by special train, our ladies and many others in Bucks were disappointed to learn that they would not be running on the Wednesday, as it happens the first of many strikes, but that was no consolation, although we did at least get our money back.

Our visit to the Royal Show in July was, again, very enjoyable even though we had a couple of heavy showers and our evening at Chenies was delightful. What a lovely house and garden!

At our August meeting ex Policeman Mr J Cumming brought back memories for some of us older folk of what it used to be like before bobbies took to the road in patrol car. He had some extremely amusing anecdotes to relate. In September, Dr German came and talked about her visit to Rwanda, showing slides and telling us what it was like there before the recent troubles. Our October speaker is from the Community Health Council.

Any ladies free on the first Thursday in the month are very welcome to come and join us.
BARBARA COLLETT - 488348

NORTH DEAN CHRISTMAS LUNCH

An invitation will be sent to many residents for this annual event (date to be announced) - Please reply promptly and enjoy with your committee a great day with wonderful entertainment
M.C

NATURALLY

Soon after the first issue of Speen and North Dean News I was approached by Fred Burnham of Spinning Wheel Cottage, Studridge Lane, who wrote his observations on nature and wild life in Speen.

Is there, he wonders someone of a like mind in North Dean, who shares his passion for this subject and is willing to work with him to produce up to date records.

It seems a wonderful idea to me, how many other eyes have been opened to what our area has to offer?

Please re-read Freds column in the 1st issue and see if you have anything to contribute

Contact **FRED - 488303** or
ME - 563074
MEGAN CHINN



Beechdean Farms

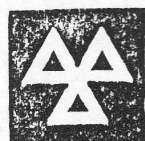
The Kents arrived in North Dean in spring of 1962 when they were married. Jim had obtained tenancy of Old House Farm from Mr & Mrs Barney Olink and although neither Gill or Jim came from a farming

background (Gill's father worked for a flour miller in Bristol and Jim's father worked in a bank in London) their enthusiasm for working on the land was infinite. Gill took a job as a teacher at Pipers

*Our Service always
passes the test*

**CAR
SPECIALISTS**

M.O.T.



WHILE
YOU
WAIT

TEST & REPAIR CENTRE

Free car collection and delivery for servicing and repairs

Old Oxford Road, Piddington, High Wycombe, Bucks. HP14 3BE
Tel: 0494 881828

J.M.PAYNE BUILDING

Estimates free from your local
builder for all types of general
building work and repairs.

Extensions - Alterations - Garage
Patos - Garden Walls
Replacement Windows

Kingswood
Hampden Road
Speen



0494 488259
Mobile 0374 250866
Evenings 0442 862973

Corner School to help make ends meet. For the first ten years they worked with the rest of Jim's family who were farming as tenants of Sir Francis Dashwood at Cookshall Farm, West Wycombe. Old House Farm was a "cereal and sheep" farm for this period, which proved very uneconomic so that in 1969 Gill and Jim set up an independent business based on a milking herd of Friesians.

Beechdean Farms was started in 1970 when Donald Campbell, who lived in North Dean House and farmed at Home Farm formed a partnership with Gill and Jim who were by then his tenants at Old House Farm. Donald Campbell is still a partner in the business although he has moved twice since 1970, first to a house at Bagnor, Newbury (now occupied by Lord Palumbo) and more recently to Little Dartmouth overlooking the Dart estuary in Devon. North Dean House has also seen considerable changes; the house having been split in two, the barn converted into a dwelling and the cottages sold separately, resulting in the whole complex now being owned by six different occupiers.

The farming business started with the amalgamation of the Campbell and Kent dairy herds and soon built up to 300 cows. All the heifer (female) calves were reared as replacements for the cows, a policy which continued until a few years ago when quotas were imposed on the industry forcing a cut-back in numbers.

At present the herd consists of 250 high yielding pedigree Holstein Friesians which are managed by Gill and Jim's son Charles, who is now a partner in the business.

The cows calve from July to October and are fed mainly on grass and on silage, made from maize and grass grown

on the farm, they live inside from calving to April the following spring and in the summer graze the fields either side of the road at Home Farm which often leads to hold ups as they cross the road on the way out! The milk is sent to Wren Davies Dairy at Prestwood, apart from that used by Beechdean Dairies, the Ice Cream business run by daughter Susie, her husband Andrew Howard and their partner Chris Wise.

Our neighbours, the residents of North Dean, Speen and Hughenden have always been very tolerant and helpful, with many ringing or calling in to tell us of calving cows or wandering stock. We are immensely grateful for this. We are farming in "suburbia" however one views it, and there is nothing we dread more than retrieving 100 cows from someones front garden, which is a possible scenario now that so many have open plan gardens and no gates (in complete contrast to the situation in the 1960's). Spreading slurry can cause offence but is an essential part of any livestock farming system. Genuine country dwellers hold their noses for the few days a year when the dreaded machine appears, only those newly arrived from the town get upset!!

The Kent family now owns the farms in the village but we still rely to a great extent on grazing rented annually from local residents; in fact we have ten different landlords!

As well as enjoying living and working in such beautiful surroundings we also gain an immense amount of pleasure from meeting the many people who come to the farm. Nearly every year at least one of our employees comes from abroad; this year we have had 2 lads from South Africa, 2 from New Zealand and a girl from Hungary working for us at

various times. We welcome visitors of all ages, both in groups and as individuals. Recently we have been honoured by visits from the President of Uganda and the Japanese Minister of Agriculture, but school parties, the Beavers from Naphill and the over "60's" club from Beaconsfield are more important in our eyes. We want to explain the country code and how we run our business. In the process we hope to undo some of the damage that "Media Hype" does to the farming industry. Anyone is welcome to see what we are doing, please call us.

Exciting Changes at Speen Playgroup

Speen Playgroup this term is happy to welcome Julie Dench as their new leader. Julie comes to us with a wealth of experience and the playgroup committee feels pleased and confident about her appointment and that of her helpers.

This small friendly group is now able to offer a complete weeks programme incorporating Wednesday as well.

Changes include structured P.E and music and movement sessions on a weekly basis which the children thoroughly enjoy.

So, if you have children aged 3-5 years and would like to take advantage of this excellent local facility contact **Viv Goldie-Jones** on **443570**, or **Melanie Page** on **488677**.

SPORTS



SPEEN TABLE TENNIS CLUB : B TEAM MAKES DIVISION 4

Speen Table Tennis Club has just started its 1994/95 campaign in the High Wycombe and District Table Tennis League in which almost 100 teams take part. As before, Speen has entered three teams.

The A team is playing in division 3, and is captained by Alan Showler. Speen's promising young player Matthew Hickman is a member of this team. Not yet 15, Matthew performed very creditably in this senior division last year. He was also a member of the County Youth squad and did well in the end of season League Championships. With this background experience, great things are expected of him this year.

The B team is captained by one of "Old Speen's" youngest sons, Jimmy Lawrence. Following his success in

master minding their campaign in 1993/94, the team has been promoted to Division 4. Quite undaunted by the prospect of taking on the stiffer opposition, Jimmy confidently forecasts that they will do more than just survive!

The C team is managed by Peter Clarke (Springwood Cottages) in Division 6. Last year as well as comfortably holding their own in the division, the team reached the final of the Dame Baskerville Knockout Cup Competition. They only narrowly lost. A strong tip for promotion in 1994/95.

Looking ahead, the Club hope to recruit at some time the Peake Brothers (Matthew and Richard, Hampden Road,) Both have a natural aptitude for the game and would without doubt greatly assist in keeping Speen on the map.
GORDON LOCKE

Cricket Club - Outstanding Runs

The hot summer's weather during July and August has produced some hard, fast pitches and speedy outfields resulting in some remarkably high scoring.

There have been 8 matches in July and August, 2 have been won, 2 lost and 4 drawn. Over 200 runs have been scored in an innings on no less than 7 occasions including a record 314 for 1 declared by our guests at Gamecox.

There have been some notable individual batting performances by Speen cricketers, with the outstanding scores being 107 by David Meli against Wescott and 104 by Robin Cusdin against Gamecox.

With regard to social matters, it is disappointing to report that the Annual Ball has had to be postponed. Initially planned for September 3rd at the Oak Room, Swan Theatre, Wycombe, it will be rearranged for February/March 1995 - hopefully at the same venue. Details will be forthcoming.

**MIKE BOUNDS -
SECRETARY
SPEEN CC**

Rosemary A. Stone

(MSSCh MBChA)

SURGICAL CHIROPODIST

Home visits by appointment

**TELEPHONE:
Naphill 562569**

Vivaldi, Stocking Lane, Hughenden Valley
Bucks. HP14 4NE



KNIGHT-LEIGH LTD

CHARTERED BUILDING COMPANY

For all your building works —
large or small

**CONTACT:- Janet or Charles
Leigh-Dugmore**

Telephone: Naphill (0494) 563614

SPEEN TENNIS CLUB - MAJOR REPAIRS IN SEPTEMBER



The committee of Speen Tennis Court are pleased to announce that by the time you read this major repairs will have been carried out on the tennis court. Over £4,500 has been spent in resurfacing the court, so it has been out of action during September.

Estimates were sought from three registered contractors and the committee is pleased to announce that the contract was awarded to a local High Wycombe firm, Spade Oak Duracourt Limited.

The work has been carried out in accordance with the requirements of the Tennis Court Construction Federation of Great Britain and to Lawn Tennis Association standards.

This existing surface has been suitably repaired and prepared prior to the new one

being applied. The new surface will consist of 25mm deep specially formulated porous bitumen macadam screeded to accurate levels using a laser level, rolled and cross rolled to form a smooth playing surface, then left to harden and coloured with two coats of acrylic paint and marked out to LTA dimensions. New tennis posts and net will also be fitted.

At the end of the works we will have an excellent playing surface ready for the 1995 tennis season. The committee look forward to existing and new members taking advantage of playing on this new enhanced facility.

For further details please contact **Roger Craft**, Chairman - 488343 or **Bob Johnson**, Secretary - 488593.

Speen Fete



Sizzling the weather, the atmosphere electric, what a wonderful day! Once again the children of Speen School gave so much pleasure with their exhibition of Maypole dancing. Side shows, craft tents and many more coming together to make this lovely village on the second Saturday in July every year, the only place to be.

Our grateful thanks to all who helped to make this day the success that it was. We will have a final total of the profits very soon and hope to have raised a good amount to send to the Federation of Multiple Sclerosis Centres. We will let you have the figure in the next edition.

Thanking you all once again for your help and support

**S P E E N F E T E
COMMITTEE - JUNE
ROWLAND - 488779**

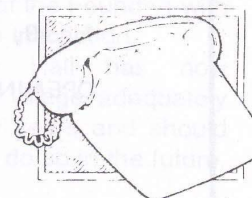


A number of ladies from the village have been gathering together from time to time for an informal "tea and chat", to keep in touch and catch up on the news.

The next one will be held on Friday 21st October, the venue will be announced later.

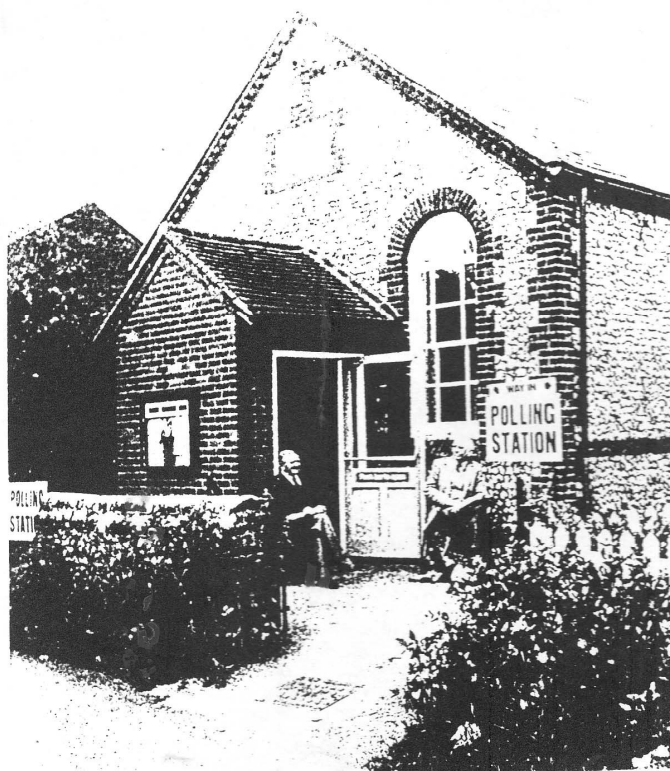
The "tea and chat" is open to any of our senior residents and we have a lovely time together. Do come and join us.

Contact - **Gloria Holmes** -



Good Neighbours "Tea and Chat"

Speen Village Hall; Reflecting our History



In 1893 the Members of Speen Baptist Chapel had certain differences of opinion on varying matters and part of the membership decided to have their own place of worship. A small piece of land was acquired in Studridge Lane and a new brick and flint building was erected and completed in 1894. It became known as the Temperance Hall and was used for services for about 20 years. Support gradually dwindled and the membership finally returned to the Chapel. The Hall was then available for community use and in 1924 a public meeting was held and a decision made to purchase the building as a Village Hall. The purchase price required was £125 with purchaser paying vendors legal fees and their own of £25. This included drafting the Trust Deed which is still in force as regards management of the Hall.

Mr J Janes and Mr

ABBAY BARN CONTRACTORS

WEST YARD, SLOUGH LANE, SAUNDERTON, HIGH WYCOMBE

TEL : 0494 562003

Building Supplies for the Professional and DIY

Large Quantities in Stock for Collection or Delivery

- | | |
|--|------------------------------|
| * Sand & Ballast | * Building Sand |
| * Cement | * Flints |
| * Graded Topsoil | * Leighton Sharp Sand |
| * Reject Stone | * Type 1 & Type 2 Road Stone |
| * Peashingle for Footpaths & Drives (10 & 20 mm Shingle) | |
| * Cotswold Shingle 10 & 20 mm - Samples on Request | |
| * 3, 4 & 6 yard Skips for Hire | |

OPENING HOURS : Monday to Friday - 7am to 5.30pm
Saturday - 7am to 12.30pm

Plumridge lent this money to the Hall Trustees to acquire the premises. A fete was held in 1925 and 1926 and the proceeds used to repay this loan. Initially there were no facilities beyond a coke stove for heating and oil lamps for light. It was used in evenings for the Wireless Club, where villagers could go and listen to the wireless (it was not called the radio then); the Men's Institute where they could play billiards, draughts etc and later the Women's Institute, Scouts, Girl Guides and the usual Jumble Sales and Whist Drive. Electricity was installed when available in the village in the late 1920's. Water supply was by tank filled from the roof gutter, which facility is still in place today. Mains Water was installed in the mid 1930's. A corrugated iron storeroom/kitchen was built at the side with a chemical toilet at the back. This served to contain all the equipment and making tea, sandwiches and all other necessities for Hall users until 1970.

During the second World War, dances were held in the Hall almost every week together with many other community functions. It must be mentioned that during that time the Hall was run single-handed by Wally Wood from Coleheath Bottom who kept the Village Hall smoothly running during those difficult times.

After the War the building was in need of much maintenance and funds were scarce. In 1957 the whole building was rewired and electric heaters installed, all by Committee members with the materials being given by local residents. Many other urgent works were done by the Committee as necessary.

Since the Hall was founded it was managed by a Committee answerable to the Trustees. No change of

Trustees has been made since 1933 and the three remaining Trustees being of advanced age requested the Committee to consider placing the Hall under the Public Trustee for Charity Lands which was completed in 1960. This ensured the Hall had permanent Trustees in the Public Trustee for the future. At the same time the Charity Commission's representative was instrumental in acquiring a Grant from the Carnegie trust which enabled the roof to be reslated and the interior redecorated.

The Coronation Choir, who used the hall every week and gave twice yearly concerts donated the wooded folding chairs. The Hall did not actually acquire the full size wooded tables until 1962. The existing facilities really prevented the Hall being used to the full and in the late 1960's the only washing up facility was an earthenware sink with the waste through the front wall discharging to the garden, there were no drains at all. Fund raising began and with Council and other Grants the present Kitchen and Toilets together with the Front Porch were built and opened early 1970. Mains drainage was finally installed and a store built behind the Hall. With these new facilities the Seen Playgroup was able to use the Hall and many other organisations were using the premises and today there are not many evenings when the building is not being used.

The Hall has always suffered by a lack of land around. The back and west side was built tight to the boundary and there was only a few feet spare on the other sides. There was no vehicle parking facility at all. An odd piece of wide road verge existed almost opposite the Hall and through the efforts of

a local Parish Councillor the County Council allowed the Hall to use this land to park cars. Fortunately in 1971 the County Council remade the surface in tarmac to give the Hall its own Car Park.

The storeroom built at the rear of the Hall did not prove very weathertight and by 1985 was in need of total replacement. The Hall had no further land at the back at that time. At that time planning permission had been granted for new houses on the orchard at the rear and the Hall Committee approached the developers to see if a small piece of land could be purchased to allow a good sized storeroom to be built. To their credit the developers gave the Hall a five foot strip of land free of charge and with the help again of County Council grants the present new enlarged storeroom was built.

Outside the Hall little has needed replacement until recently when two decorative curved windows proved too rotten for redecorating and have recently been replaced to match the original pattern.

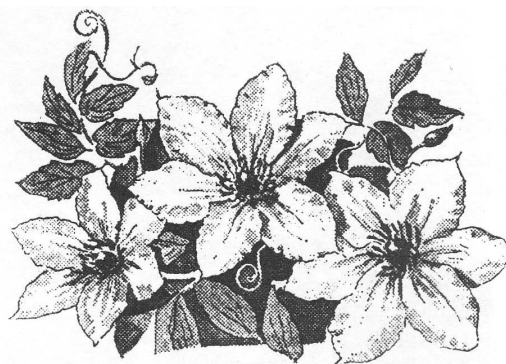
The entrance gates are worthy of mention. Originally the Hall had a small iron gate leading to the front door and a wooded paling gate in front of the Kitchen. In 1977 the Village celebrated the Queen's Silver Jubilee with various activities. Afterwards a certain amount of money remained in the fund and the Committee gave the Hall the present wrought iron gates (made in the Parish at the Foundry) with the suitable inscription.

The Hall has now served the village adequately for seventy years and should continue to do so in the future.

Don White - 488437

For further details please contact:- **Stan Bale - 488015**

SPEEN HORTICULTURAL SOCIETY HOST T.V WILDLIFE MAN



Many thanks to all those who contributed plants, flowers and produce for our stall at the fete and to those who helped sell the same during the afternoon. We raised £205

By the time you read this we should have held our Annual Show (18th September). Our congratulations to all the winners and a wish for better luck next year to all the "also-rans".

We will be holding our A.G.M. on 21st October, at 7pm in the village hall. This

will be followed by cheese & wine and a slide show "Wildlife of the Falklands" by Paul Morrison. Mr Morrison is a professional wildlife photographer and author, has appeared on television, and is an experienced radio presenter and public speaker. A date not to be missed!

Further ahead, on Friday January 13th, 1995, we will have Dr Peter Brandham, of Kew Gardens, giving a talk "A Year at Kew". This is another first class show.

North Dean Veg Show Walkover

North Dean held its annual Vegetable Show on Sunday 28th August, and despite the very dry summer a very fine selection of all kinds of vegetables were on display. I would like to congratulate Charles and Kate Kent, who entered the show for the first time this year and walked away with 6 first prizes, a lesson to be learnt for us old hands.

AUDIT, TAXATION & ACCOUNTANCY SERVICES

CONTACT: RICHARD.D.PARTRIDGE - 0494 488277

Accountancy, Audit, VAT, Payroll, Tax Returns and all related services for your small business. Free consultation.
Personal service and fixed fees agreed.

Partridge & Co. - Certified Accountants.

A member of the Chartered Association of Certified Accountants.

THE PAUSE

If I could write on and on, out of the full stops
into the pause, the gathered moment,
would I lose you again somewhere between the halting stretch of
words, back then when I thought I held it all in the fingertips
of the dotted i's and crossed t's?

We could not agree: not even a simple nod,
a gesture turned inwards and then out to embrace the world.
Your eagerness knelt at the feet of baseless memory
delighted by the richness of her consent

I asked you to jump with me.

We parted and fell and time clicked past,
taking photographs of shiny cares and roses so perfect
I thought they were plastic.
I can still see us trapped there
plastered to shifting walls,
my head lolling back to shout to you,
my mouth parted from the kiss.

In the turning away we are searching the emptiness.
And time winding alongside me
folds into the curves of my fall.

And then, there is nothing, but my hear
choked by weeds that spill out and run laughing through the red pain.

Mine is the bright fury
hot, but closed for fear
dry words of dust bring no release.
And sure of my slow death
burns my dying breath

CHERRIE

MY NAME IS John Critoph

It was a pleasure to interview John Critoph, who was born in Jordans in 1961 (making him 33 for anyone who's as enquiring as I am!). He has always lived in Bucks. Last year he wanted to move back into the countryside and after much searching he found Squirrel Cottage in Flowers Bottom Lane, (situated opposite Turnip End.) It was love at first sight and he moved with Cherrie in November.

I asked John what he thought makes village life so different - he loves the community spirit and privacy

and the fact that there's lots of space if you want it but also many ways to be involved, the main reasons he chose Speen is that it's in the countryside, it's quiet, it's close to Jordans where he grew up and has a big garden (with squirrels).

I was pleased and intrigued when John offered his name to me and discovered that he leads a "double" life. By day he works for Symbol which is based in Wokingham, they are leading retailers of laser scanners (what I hear you ask - well if you look at the tills in M&S, Boots and other stores

you they are the "things" that read the bar codes!) John is a technical manager and travels around the country sorting out problems. Listed among his hobbies is driving which is just as well because in his job alone he can cover up to 1800 miles a week!!

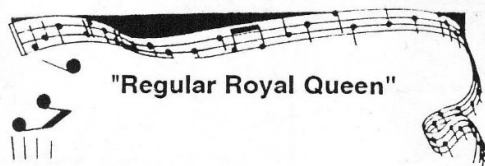
The other part of his life is his involvement with complimentary medicine. He is a trained holistic masseur and works with aromatherapy oils. Ultimately John wants to dedicate his time to caring for people, helping them to help themselves and discover what they are able to achieve, and to find their own ways of coping. To this end he has passed the Bucks County Council counselling course and is a counsellor at Way-In in Chesham, which is essentially a Youth Drop in Centre, for counselling and advice.

In his limited spare time he likes to mess about with cars and fiddling with Hi-Fi's to get the best quality of sound (in his younger days he was not popular with his neighbours!), he also enjoys taking items apart and putting them back together. He now takes pride in himself that he can actually put them back together (except the Hoover - just ask Cherrie!)

John has many claims to fame the biggest (??) is that he was one of the only two people who knocked down all the skittles at Speen Fete this year. (I understand the other was someones Granny!)

And as a final comment, you should have noticed an improvement in the village. Twice a week John and Cherrie walk around the village with a plastic bag and pick up every single piece of litter they find. Well Done!

If you would like to find out more about John he can be found at **Squirrel Cottage, Flowers Bottom Lane, Speen - 488389**



"Regular Royal Queen"

August 13th 1994, Haynes Bedfordshire.

It was with the greatest of pleasure that singers Avril White from Speen, Megan and Bill Chinn and accompanist Gwyneth Palmer from North Dean, were there, at the request of her family, to perform extracts from Gilbert and Sullivan operas, at a party to celebrate the 90th birthday of Agnes Winch.

Agnes moved to Applegate Cottage Speen to be near her son John and his wife Margaret, when she retired and took an active part in Village Life.

However the other connection between these people, is the Wycombe Savoy Opera Co.. Avril, Megan and Bill are founder(singing) members of the Company and Gwen (as we all know her) is the present rehearsal pianist.

Agnes, also a founder member was with W.S.O.C.

from 1971 to 1980 as wardrobe mistress.

The presence of the singers and the programme came as a complete surprise to her. From the first "Silence in Court and all attention lend" ("Trial by Jury") from Bill, to the final chorus of "Iolanthe", the prepared script took every one on "a short musical trip through the Agnes years at Wycombe Savoy."

Most of the costumes she lovingly made in Speen are still in use and available for hire to other Musical Societies.

There is an opportunity to see this talented company in their latest production "Die Fledermaus" from 4th-8th October at St Marks Church Totteridge Road, High Wycombe

TICKETS £5.50-£7.00 from
ROY HARRIS - 437969

As well as holding an annual spring show they also perform for various charities.
M.C.



HOUSE OF COMMONS
LONDON SW1A 0AA

UNCOMMONS THINKING

I would like to be able to vote against a party or candidate as an alternative to voting for one. At present I have no choice but to vote for another candidate who may then imagine I support his policies and if elected claim a "mandate" for them - when half his votes come from those who particularly dislike or distrust his opponent. With the option of a negative vote (which would cancel out a positive vote) many people would be better able to express their feelings about politicians

- and more would turn out on polling day! Politicians would need to do something positive to win our votes rather than spend so much time denigrating their opponents. Some candidates would get more negative votes than positive - there would be a certain message there. No candidate would want to attract the worst negative votes in the country such a system would probably favour the smaller and more innocuous parties at the expense of those with a "higher" profile - not a bad thing - and would make opinion polls useless - Excellent!

Above all, it is a very simple reform and would do a great deal to reduce the vanity of politicians - but they would never dare to give us the chance!
N.W.R.



PETER F. BOOTH F.B.C.O.

OPTOMETRIST

A SIGHT CARE PRACTICE

• EYE EXAMINATIONS

• CONTACT LENS
FITTING

• SOLUTIONS AND
ACCESSORIES

• SAFETY SPECTACLES

• VDU ADVICE

FASHION & BUDGET FRAMES •

CHILDRENS
FRAMES •

SUN SPECTACLES •

MAGNIFIERS •

CORDS & CHAINS •



120 STATION ROAD, CHINNOR

TEL: KINGSTON BLOUNT (0844) 351564



SPEEN VILLAGE HALL

If you need to book our Village Hall for a party or function of any kind it pays to book early.

There is nearly always a full diary with the Table Tennis Club, Art Classes, W.I. and Horticultural Society using it, also the Parish Council hold meetings here and during term time the Playgroup use it each weekday morning. The Post Office is held here on a Tuesday from 12.30 to 2.30 and most weekends see either a child or adults party taking place.

Yearly we hold the Village Quiz, the Xmas Bazaar (this year on 26th Nov), a Lace Day, and the Playing Field Committee have been holding very popular "Pub Nights" at regular intervals. We even have local Conservation groups sleeping here for weekends while on local jobs such as clearing ponds etc.

On November 18th we are giving another Musical Evening as last years was such a success (tickets from **Stan Bale - 488015**) This time with a choir and quartet and a little on the lighter side that the last one

Speen Church - Men's Breakfasts a Success



Over the last three years Speen Church has organised a series of successful men's breakfasts to enable the men in the village - most of whom are commuters - to meet their fellow villagers, enjoy fellowship and to hear briefly from visiting speakers. With limited human resources we

find it difficult to personally ask every man in the village, so we take this opportunity of asking any interested men to contact either **John Payne** (488259) or **Ted Drew** (488738). Our next breakfast is on Saturday 3rd December, at 8.30 am in the King William. The cost is £5.00

THE PROBLEM - Posed in the last issue - a response.

In the diagram, A,B. & C each have 5 sides - I have marked the five sides of A.

If you draw a line through each side of a five-sided figure (or any figure with an odd number of sides) one end will be inside the figure - thus

To solve the problem, A,B

& C would each have to have an end of line within them - so we need a single line with three ends, therefore the problem cannot be done!

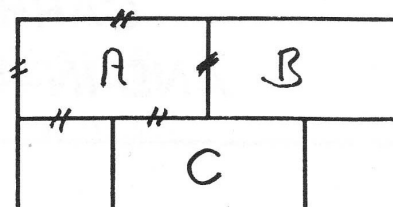
Ed. Did anyone else find this or alternatively did anyone manage to do it? A reprint is here for you to try again! Answer in the next issue! N.W.R



JUST FOR FUN

Try this baffling puzzle which is guaranteed to keep you occupied during dull conferences or meetings. To be honest, we don't think it can be done at all, so don't blame

us if you can't do it! What you must do is, using a pen or pencil, draw a *continuous* line so that it crosses each line in the grid printed here. You can only cross each line *once*. Copy the grid carefully and keep trying... have fun!



Winter-Tailors

S O L I C I T O R S

Our **CONVEYANCING** Solicitors will assist in the sale and/or purchase of Residential Properties.

Our **FAMILY** Solicitors deal sympathetically with legal aspects of family breakdown including divorce, separation and their financial consequences, child care cases and welfare matters.

Wills, Probate, Tax and Trust affairs are handled by Solicitors in our **PROBATE** Department.

Our **LITIGATION** Solicitors deal with Civil Litigation matters including Personal Injury and Debt Recovery.

Our **COMMERCIAL** Department Solicitors handle Company affairs, Commercial Litigation, and Commercial Conveyancing.

Park House
London Road
High Wycombe
Bucks HP11 1BZ

Tel: 0494 450171

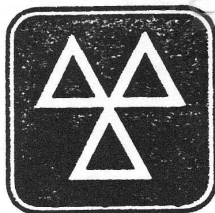
The Old Star
Church Street
Princes Risborough
Bucks HP27 9AA

Tel: 0844 347676

McDONALD MOTORS

NORTHMILL

SUMMERLEYS ROAD
PRINCES RISBOROUGH
BUCKS. HP17 9PU



M.O.T. TEST CENTRE

Telephone
0844 344802

(M.O.T.s WHILE YOU WAIT
OPEN 6 DAYS A WEEK)

TYRES & EXHAUSTS

**ALL SERVICING, REPAIRS AND M.O.T.s
CARRIED OUT EFFICIENTLY
AND IN A FRIENDLY ATMOSPHERE**

Village Calender

OCTOBER

6th W.I. - Speaker from
Community Health Council
7.45pm Speen Village Hall

8th Chessington - 9.00 Speen
Stores

14th Village Quiz - Speen
Village Hall

21st Good Neighbours - Tea
and Chat 3pm

21st Horticultural Society -
A.G.M. and Wildlife in the
Falklands - 7pm Speen Village
Hall

22nd Theatre and Outings
Club - The Reluctant
Debutante - Mill at Sonning

NOVEMBER

3rd W.I. - A.G.M. 7.45pm
Speen Village Hall

5th Speen Playing Fields -
Bonfire Party/Night

18th Good Neighbours - tea
and Chat - 3pm

20th Cancer Research -
Christmas Fair - 11am - 1pm -
Coffee and Mince Pies - North
Dean Village Hall

26th Christmas Bazaar - 2pm
Speen Village Hall

26th Race Night - North Dean
Village Hall - Tickets from
**Roger Pyle 562448, Megan
Chinn 563074**

DECEMBER

1st W.I. - Christmas Fabrics,
Mrs H Dovey - 7.45pm Speen
Village Hall

3rd Mens Breakfast - 8.30am
King William

11th Guide Carol Service -
3pm Baptist Church

19th Carols by Candlelight
6pm Baptist Church - followed
by coffee and mince pies

25th Christmas Day service -
10.00 Speen Baptist Church

To be advised

North Dean Village Hall - Carol
Service , Christmas Luncheon

North Dean Fete Success

Back in July we held our
annual Fete , and had a very
successful day raising over
£1,000 towards the roof fund,
estimates for which are in
excess of £6,000, so we are
still looking for names to add to
the donation list, why not be
the next name on there?

We were lucky to have Ivor
Beeks, Chairman of our
successful local football team,
to open the fete, and a signed
football supplied by the club
raised over £100 on a raffle.
Thanks to you Ivor and to
Janet for helping to make it a
day to remember.

We were entertained by
the children of Speen School
on the day, a big thankyou to

THAT'S LIFE!

That's Life is a youth group in
Speen. We talk about many
interesting issues, some quite
deep and some just for fun.

We go out and have a good
time together at ice-skating
rinks, ten pin bowling, we go
swimming and occasionally out
for meals.

That's life meets once a
week on Sunday evenings from
7-9 pm so if you're interested
in coming along and would like
more information call **Rachel
and Charlie on 488758**

Caroline Wright

all who took part.

Once again Piggotts Band,
played some very entertaining
music during the afternoon and
our thanks to them.

We were fortunate to have
a large band of helpers, both
on the day, and during the
evenings prior to the fete, my
thanks to you all, Fete day is a
hard one for all of us and to
have the amount of help we
had this year makes life so
much easier, I look forward to
seeing you all at next years
Fete, and at the events we
have planned during the year.

**J. SMITH & SONS (WALTERS ASH)
LTD**

Personal Service From A
Friendly Family Company
Car Parks Roads And Drives



0494 562256

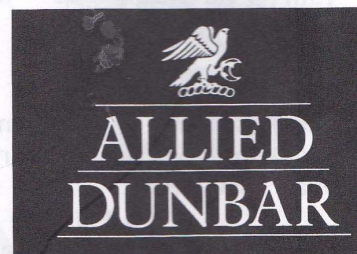
280 Main Road Walters Ash High Wycombe

Will the last thing you leave your children be a tax bill?

An impossible tax burden is one thing you won't want to leave your children when you die. That's why at Allied Dunbar, we work with you to plan for the burden of inheritance tax. Our financial plans can be specially tailored to respond to your family's changing circumstances - protecting them in the best way possible.

So call me today on **0494 563188** or return the coupon below. Together we'll make sure your family are secure now and in the future.

For the life you don't yet know



To: **Jeff Leeks** FIPM Financial Planning Consultant representing Allied Dunbar Assurance plc which is a member of Lautro. Ashleigh, 183 Main Road, Naphill, High Wycombe, Buckinghamshire HP14 4SD.

Yes, I'd like to know more about how Allied Dunbar can help me with financial planning.

Name.....

Address

Postcode Telephone

SPEEN C OF E FIRST SCHOOL PRIZE CROSSWORD CHILDREN ONLY - NO GROWN UPS

Fill in the crossword and send it to Speen School with your name and phone number to be included in the draw from all the correct entries.

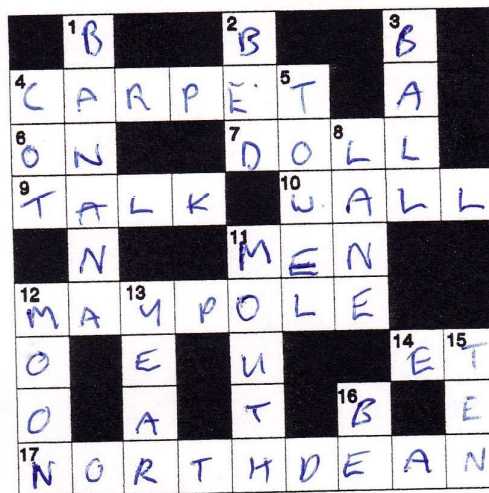
My name is: _____

My age is: _____

My phone number is: _____

ACROSS

4. Some rooms have this on the floor.
6. The opposite of OFF.
7. A toy which lots of girls like.
9. You can do this, but a little baby can't.
10. You put pictures on this.
11. Boys will be these one day.
12. Something we dance around at Speen Fête.
14. The name of a little alien in a film. (2 separate letters).
17. There is a new playground here, and toddlers come here every Tuesday. (2 words: 5, 4).



DOWN

1. A long fruit with yellow skin.
2. You go to this at night.
3. A lot of games are played with this.
4. Where a baby sleeps.
5. Something to dry yourself with.
8. Our school is in Flowers Bottom
11. You have to open this to speak or eat.
12. This shines in the sky at night.
13. Birthdays come every
15. If you had 25 pence and spent 15 pence, how many pence would you have left?
16. You are often told to .. good !

WORD GAME

We've made 100 words of three letters or more out of "North Dean". Can you beat this? Send in your list - the most words entered will win a prize.

LATE NEWS

IT IS NOW CONFIRMED THAT SPEEN AND NORTH DEAN ARE TYING UP THEIR TODDLERS!!

Speen and North Dean have joined forces to create a combined toddlers group in North Dean Village Hall on Tuesday mornings from 10.00 to 12.00. All toddlers (and their grown-ups) are welcome to come for some quiet (and raucous) activities.

Phone Christine Dunnington on 488203 for more details or just turn up!

SPEEN AND NORTH DEAN GOOD NEIGHBOURS

The organizers would like to thank most sincerely those who have given thier time to help. It is reassuring to everyone to know that help is available if ever it is needed.

The scheme has been running for 3 years now and many people have appreciated help. It is now time to update the list of volunteers.

PLEASE FILL IN THE QUESTIONNAIRE PROMPTLY EVEN IF YOU HAVE DONE THIS BEFORE, PLEASE CONFIRM YOUR AVAILABILITY. THANK YOU.

Please note: Several teenagers successfully completed a Red Cross Babysitters course and now offer a babysitting service through the Good Neighbours scheme.

SPEEN AND NORTH DEAN GOOD NEIGHBOURS Questionnaire

Name _____ Tel No _____

Address _____

TIMES NORMALLY AVAILABLE (Please tick as appropriate)

Daytime _____ Evening _____ Weekend _____ Any time _____

I WOULD LIKE TO OFFER HELP IN THE FOLLOWING WAY(S):

Shopping _____ Babysitting _____

Visiting _____ Emergency repairs _____

Driving e.g. to hospital _____ Other help _____

PLEASE RETURN TO Gloria Holmes, Cherry Dell, Chapel Hill.

SPEEN AND NORTH DEAN GOOD NEIGHBOURS

A group of local volunteers has been assembled to develop a string of services to help anyone in the community. Everyone can use the scheme when they need to. Some of the needs may be:

- shopping, hospital visits, baby sitting, emergency repairs.
- support to the bereaved, lonely and recently discharged hospital patients.
- welcoming new residents to the village, etc.

HOW DOES THE SCHEME WORK?

three alternative names and phone numbers of volunteers to ring with your request. Please call for help between 8.00 - 9.00 a.m. or 6.00 - 7.00 p.m.

TELEPHONE RECEPTIONISTS:

| | | |
|----------------|---------------------|-----------|
| Margaret Jones | Thatched Cottage | HW 488246 |
| Poppy Ellis | The Old King George | HW 488548 |
| Doris Wilson | 3 Woodview Drive | HW 488334 |

*Any payment for services should be arranged between individuals, a contribution of £1 per journey is suggested for the transport service.

**Car owners must check that they are insured to carry passengers. Users of a service do so at their own risk.

Further information from: Gloria Holmes, Cherry Dell, Chapel Hill. HW 4884

ORGANISATIONS IN SPEEN

| | | |
|---------------------------|---------------------------------|--------------------|
| Parish Council | George Crombie | 488240 |
| Tennis | Roger Craft | 488343 |
| Playgroup | Amanda How | 488286 |
| Mother & Toddler | Chris Dunnington | 488203 |
| Horticulture | Ted Drew | 488738 |
| Cricket | Mike Thomas | 488269 |
| Playing Fields | Sheila Tidball | 488377 |
| Scouts | Paul Rogerson | 488315 |
| Guides | Pauline Hall | 488372 |
| Youth Club, Footsteps | Charles Radburn | 488758 |
| Baptist Church | David King | 0844344839 |
| Village Hall Bookings | Catherine Butler | 488412 |
| Speen C of E First School | Mrs Nayna (Headteacher) | 488321 |
| PTA | Amanda Bacon | 562166 |
| Milkman | Wren Davis Dairies | 862224 |
| Newspapers | J and F News | 563854 |
| Bread delivery | Roger Price | 442358 |
| Village Hall | David Slade | 488262 |
| Speen WI | Christine Oliver | 488409 |
| | First Thursday in month. | |
| | Hughenden Stores | 562251 |
| Wycombe District Council | Refuse Collection | 461000 Thurs. Fri. |
| Mobile Library | Hampden Road 10.15 - 10.45 | Alternate Mondays |
| Post Office | Speen Village Hall 12.30 - 2.30 | Tuesday |

PLEASE KEEP THIS AND CONTACT US IF YOU NEED HELP.