



# Speen and North Dean News

Issue 1.

July 1994

## B.U.S.K - BELT UP SCHOOL KIDS



Would you allow your child to travel four and a half THOUSAND miles on a bus with three children to two seats and no seat belts?

This is in effect what we are asked to do if we bus our children from North Dean/Speen to Lacey Green for middle school years. Of course if they go on to Grammar School in Wycombe that journey distance increases to over thirteen thousand miles - all without adequate safety precautions.

When parents can be fined for failing to strap in their children it seems nonsensical that these same children are encouraged to travel daily on buses and coaches where the option to wear a safety belt is not even offered.

Buckinghamshire County Council has recently announced a plan to abolish the three children to two seats

rule which is still legally accepted, but the next move must surely be to work towards strapping those children into their individual seats. The repeated arguments trotted out by government and coach companies alike...not enough research...difficult to enforce... where to attach the belts...chassis strength and weight...are convenient excuses which delay the necessity of funding these improvements. It is clearly going to be an expensive procedure but what price should be placed on our children's lives?

B.U.S.K. stands for "Belt Up School Kids" and was started by a group of parents in South Wales who were increasingly alarmed by accidents occurring on school transport. It is now a Nationwide Campaign with over 40 local groups. Our

aims are:

- to draw attention to this safety issue and gain the support of parents and others throughout the country.

- to lobby at national Government and European Parliament level for a change in seat belt law that will see all school transport included in the strict regulations which already apply to private vehicles.

- to lobby at local level until county councils change their policy on tendering and agree to tender only for vehicles fitted with three point seat belts or harnesses - not lapstraps.

A petition with over 150,000 signatures (including many of yours - thank you) was recently handed in to the Houses of Parliament calling for greater safety measures and three point seat belts. The issue is being discussed at local, national and European Parliament levels. BUSK would benefit from your support.

There is now a local branch co-ordinated by **Gill Ross** and actively supported by many people in the two villages. If you would like to know more, help in any way, or simply offer your support please contact **Gill**, a concerned parent and mother of four boys - Laurie, Sam, Jack and Georgie - on (0494) 524596.

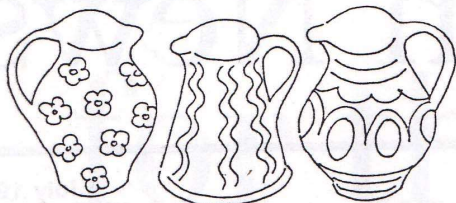
BUSK are members of R.O.S.P.A - The Royal Society for Prevention of Accidents.

*Ed: Other articles of topical interest would be very welcome for our next issue*

## SPEEN POTTERY

Tel: (0494) 488 206

DECORATIVE  
EARTHENWARE by Tessa Rubbra



The track leading to SPEEN POTTERY runs down a lovely secluded valley just outside the village of Speen (near the Old Plow). The Pottery and Showroom is part of an old cottage with a delightful garden. There is parking space at the pottery.

On display in the showroom are examples of beautifully coloured and fine tableware. Special Commemorative Plates and Bowls can also be made for Wedding Presents, Anniversaries, and other occasions that need to be remembered.

The Pottery is open every day, but if you want to see Tessa to discuss an order it would be advisable to ring before coming.

*Tessa Rubbra : Valley Cottage, Highwood Bottom,  
Speen, Bucks. HP17 0PY.*

## Chiltern Music Services



Keyboard and Guitar lessons are available locally for beginners and improvers.

If you have always wanted to play an instrument or improve on your present performance then give me a call. Maybe your son/daughter needs extra music tuition for school work.

Advice is also available on the selection of suitable instruments.

For further details phone Alan Peppett at Chiltern Music on the number below.

**"Byways", Goodacres Lane,  
Lacey Green,  
Princes Risborough,  
Bucks. HP27 0QD**

**Telephone: (0844) 346261**



## 'BRIGHT OUTLOOK' FOR SPEEN FAIR - 9th July

Preparations for this year are well under way. Lots of new events and side shows have been planned. We are happy to welcome Bill Giles the B.B.C. weather man to open the fair. All the preparation done by us does not guarantee a success but with your help before and on

the day we can make this year's a day to remember.

This year's fair is in support of the Federation for Multiple Sclerosis Therapy Centres and local organisations

It's our village - It's our fair  
- Lets do it together

Thank you from Speen Fair Committee

### EVENTS:

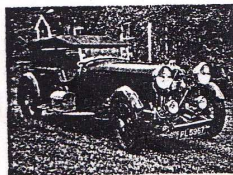
- Bungie Run
- Short Tennis for under 10's
- It's a Knockout for teenagers
- Superstar Competition
- And many more

Contact:

**June Rowland - 488779**

## SPECIAL OCCASIONS

### Vintage and Classic Car Hire

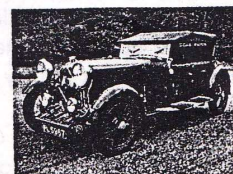


★ Chauffeur Driven Vintage Lagonda, and Beetle Cabriolet available.

★ Weddings, Special Occasions, Social Events and Birthdays.

★ Competitive Value and Personal Service Assured.

Ashleigh, 183 Main Road, Naphill HP14 4SD — 0494 563188





# WELCOME

Welcome to the first edition of **SPEEN AND NORTH DEAN NEWS**. The aim of this paper is to enable everyone in our two villages to know what occurs and also to become involved in what's going on, and thereby raise the level of community spirit.

It is with amazement that I discovered upwards of 25 different organisations in the villages. Contact names and phone numbers follow articles.

A big thank you to everyone who has made a contribution and we look forward to hearing from you next time round.

I would like to make special mention of the help we have had from **Bucks Copiers of Aylesbury** with copying facilities, and from **Stokenchurch Youth Centre** for allowing us to use their printing facilities.

We are intending to run an edition 4 times a year and we trust you will find the paper interesting and informative and look forward to receiving any comments you may have, and also any village news, for sale/wanted etc. for free inclusion. (You can provide your own pictures, drawings and photos but in black and white only please.)

(PLEASE NOTE: COPY DATE for next issue is 1st SEPTEMBER 1994)

A plea to the villagers - We desperately need a Treasurer. If you feel able to help us in this capacity please ring me on 488758. Thank you.

**Rachel Radburn -Editor**

## Please Note:

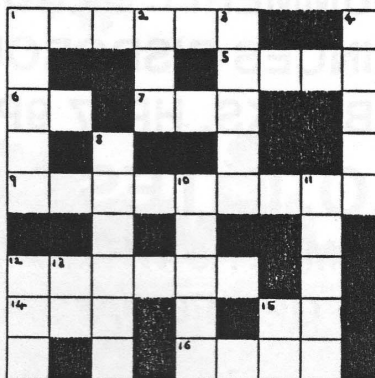
The views and opinions expressed in Speen and North Dean News do not necessarily reflect those of the Editor and she reserves the right to edit as necessary.

## SPEEN C OF E FIRST SCHOOL PRIZE CROSSWORD

### CHILDREN ONLY - NO GROWN UPS

Fill in the crossword and send it to Speen School with your name and phone number to be included in the draw at Speen Fete when a winner will be drawn from all the correct entries.

My name is:  
My age is:  
My phone number is:

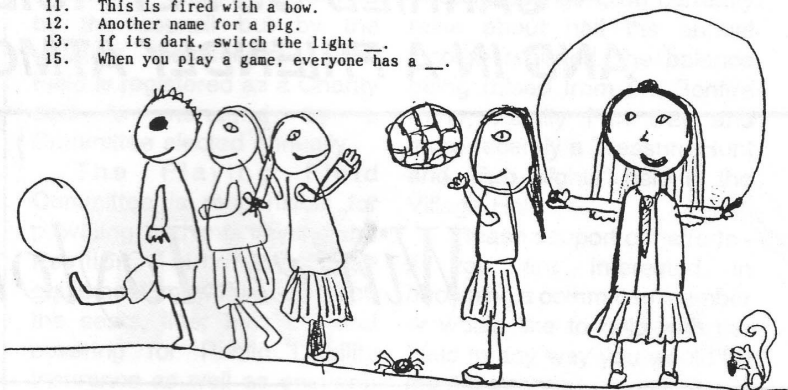


DOWN

1. You have one of these on each hand.
2. Put this on the table before you put down something hot.
3. King Arthur had one of these.
4. Our School is here.
8. Something you keep with a friend.
10. There are two of these on your feet and one on each shoe.
11. This is fired with a bow.
12. Another name for a pig.
13. If it's dark, switch the light \_\_\_\_.
15. When you play a game, everyone has a \_\_\_\_.

ACROSS

1. A famous tank engine.
5. This can give you a nasty sting.
6. Lifts go down and \_\_\_\_.
7. How many babies arrive when twins are born?
9. A farm which makes good ice-cream.
12. Speen has a Home of Rest for \_\_\_\_.
14. If you have £1 and buy something for 99p how many pennies do you have left?
15. A green light means \_\_\_\_.
16. Snails and tortoises are very \_\_\_\_.



## SCHOOL NEWS

\* Children from the school will be performing a Maypole dancing display at Speen Fair on July 9th. Examples of the children's work will be on display in the craft tent.

\* School sports day - Friday July 15th at 1.30pm. All welcome.

\* The school will be organising face painting at North Dean Village Fete on July 30th.

A number of children at the school are keen to start an after school/Saturday morning chess club. As yet we have

been unable to find an adult leader for the club. If anyone in the village is interested please contact **Alice Corrick** on 0494 565380

## CHRISTIAN AID COLLECTION FOR SPEEN AND NORTH DEAN

This year's total collected from our two villages was:-

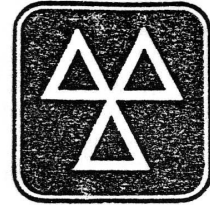
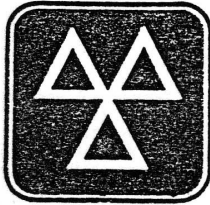
**£465.29**

A big thank you to all who contributed to make this year's total far greater than 1993's.

# **McDONALD MOTORS**

**NORTHMILL**

**SUMMERLEYS ROAD  
PRINCES RISBOROUGH  
BUCKS. HP17 9PU**



## **M.O.T. TEST CENTRE**

Telephone  
0844 344802

**(M.O.T.s WHILE YOU WAIT  
OPEN 6 DAYS A WEEK)**

**TYRES & EXHAUSTS  
ALL SERVICING, REPAIRS AND M.O.T.s  
CARRIED OUT EFFICIENTLY  
AND IN A FRIENDLY ATMOSPHERE**

## *Winter-Taylors*

---

Our **CONVEYANCING** Solicitors will assist in the sale and/or purchase of Residential Properties.

Our **FAMILY** Solicitors deal sympathetically with legal aspects of family breakdown including divorce, separation and their financial consequences, child care cases and welfare matters.

Wills, Probate, Tax and Trust affairs are handled by Solicitors in our **PROBATE** Department.

Our **LITIGATION** Solicitors deal with Civil Litigation matters including Personal Injury and Debt Recovery.

Our **COMMERCIAL** Department Solicitors handle Company affairs, Commercial Litigation, and Commercial Conveyancing.

Park House  
London Road  
High Wycombe  
Bucks HP11 1BZ

Tel: 0494 450171

The Old Star  
Church Street  
Princes Risborough  
Bucks HP27 9AA

Tel: 0844 347676



### LOST AND FOUND

Found on Speen Playing Field a "Grip" football on Sunday 5th June 1994, it is being looked after by Joshua on 488758.

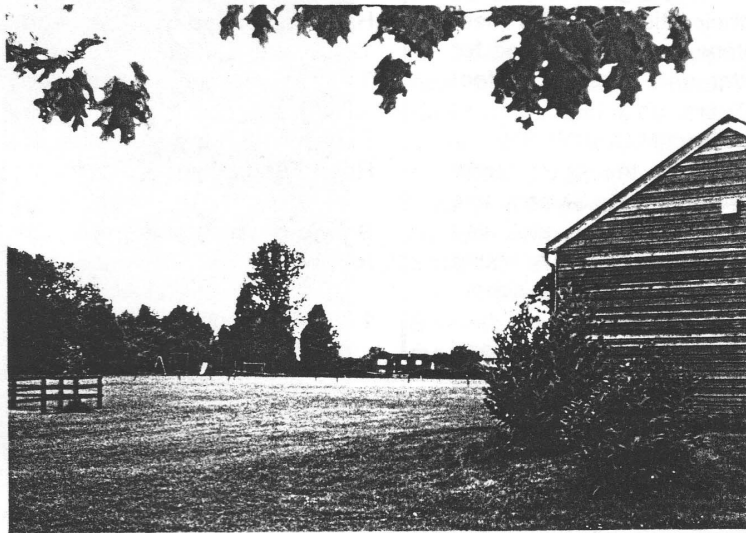
## 1st HUGHENDEN VALLEY GUIDES -

1st Hughenden Valley Guides meet on Thursdays in term time at Speen and Lacey Green Scout HQ in Coleheath Bottom. At the moment the company is full with a complement of 36 guides ranging from 10 -14 years in age. We have had a very busy programme this year including learning about first aid, firefighting and fire prevention, country dancing and working for "Challenge Badge" which involves each guide in a series of outdoor and indoor challenges.

Twenty three guides camped for three nights at Ellesborough Guide Centre in the last weekend of May where they joined guides from the rest of Hughenden District. In total 63 guides from the district camped for the weekend.

For more details on the company and its activities contact **Pauline Hall** on (0494) 488372

## SPEEN PLAYING FIELD - IT'S ALL YOURS



Newcomers to Speen may not realise that the Playing Field, next to and behind the "William IV" pub, is not owned by the council but by the villagers themselves! The Field is registered as a Charity and is managed by a Committee elected annually.

The Playing Field Committee is responsible for providing and maintaining the Pavilion, children's play equipment, mowing equipment, the seats, litter bins etc and covering for Public Liability Insurance as well as ensuring that the Field and its surrounds are kept in good order.

To finance all this the Committee organises a number

of fundraising events throughout the year. The Fortnightly Draw and the Theatre/outings Club currently raise about half the annual income required, the balance being raised from the Bonfire Party, Family Fun Day and more recently a Treasure Hunt and "Pub Nights" held in the Village Hall.

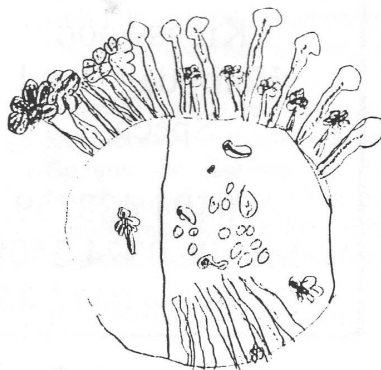
Please support our efforts - if you are interested in becoming a committee member or would like to help with the Field in any way you would be most welcome.

**Contact - Jeanne Hanford**  
Tel. 488402

## SPEEN HORTICULTURAL SOCIETY - MAKING AN EXHIBITION OF ITSELF

The next big event in our calender is the Village Fair to be held on the 9th July. We would be grateful for any horticultural produce: plants, cut flowers, cakes, preserves, etc... Please present these at the Horticultural Tent at 12.00 noon on the day.

For further details regarding the Horticultural Society and its forthcoming events please contact **Ted Drew** (Secretary) on (0494) 488738



### NORTH DEAN CRICKET CLUB?

I understand that there is talk of a North Dean cricket team! (idea of Andrew Howard) Don't be sexist Andrew, can we expect a contribution from the ladies of our fair village (or should that be the fair ladies?!). M.C.

## SPEEN MOTHER AND TODDLER GROUP

We are a group of Mums with their little ones who meet up every Tuesday morning for a natter and a cup of coffee; 10.00 a.m. until 11.45 a.m. at Speen Baptist Church Hall.

Currently the ages range from 10 months to 3 years, this is flexible and you are also welcome if you have a young baby or an older pre-school child.

There are lots of toys and each week we organise an activity table e.g. Playdough, paints etc.

There is a small fee of 75p per session and this includes coffee or tea for mum, and juice and a biscuit (or two) for the toddler.

To boost funds we aim to hold two or three fundraising events throughout the year e.g. Christmas Bazaar, Childrens' Christmas Party etc.

During the warmer months we try and hold the session outside in our gardens and we are planning several local outings this Summer.

For further information and details of Summer venues please contact:- **Chris Dunnington** Tel. 488203



## SPEEN POST OFFICE

If you go to Speen Village Hall on Tuesday's between 12.30 and 2.30pm. You will find you are able to receive the full range of Post Office Services with the exception of Road Fund Licence.

### Services provided are as follows:-

1. Full Comprehensive postal service - Inland and International, Letters and Parcels
2. Priority Services:
  - Special Delivery
  - Registered
  - Registered Plus
  - Recorded
3. Collection of Pension, Child and other Benefits
4. Payments of Bills - Gas, Telephone, Electricity and Water
5. Giro Bank Banking Services
6. Full Range of Products available from National Savings Bank
7. We also sell Phonecard, Electricity Card and Gas Tokens for Meters
8. Savings stamps - T.V. Licence, Telephone, Water, Vehicle
9. Issuing of T.V. Licence

## J.M.PAYNE BUILDING

Estimates free from your local builder for all types of general building work and repairs.

Extensions - Alterations - Garages  
Patios - Garden Walls  
Replacement Windows

Kingswood  
Hampden Road  
Speen

0494 488259  
Mobile 0374 250866  
Evenings 0442 862973







## SPEEN AND NORTH DEAN PAST

My historical investigations have concentrated on North Dean and only incidentally have I come across references to Speen. North Dean has always been in the parish of Hughenden (just!) while for most of its history Speen was (just) in the parish of Risborough. Thus church records and many others (the census for instance) are separate.

There is no doubt however that local links are very close, particularly it seems from the founding of Speen Chapel early in the last century. Nonconformity was always strong in the Chilterns, and families in North Dean generally chose to attend Speen Chapel (sometimes the Methodist Chapel in Bryants Bottom.) on religious grounds - and it was much closer than the Parish Church.

There were many families of North Dean and Speen linked by marriage, work and friendship - and many from North Dean are buried at Speen Chapel, notably Eric Gill (1882-1940) the typographer and stone carver, whose stone, together with some other Roman Catholics lies at the highest point of the graveyard.

There is interesting work to be done from the chapel records.

From the 1860's the Speen School educated most of the children of North Dean - and such organisations as the Speen Band had many members from North Dean.

It has been suggested - in the standard work on Buckinghamshire place names, in Alice Dean's interesting essay on the history of Speen and more recently in the Bucks Free Press - that the name of Speen is first found in 1823. However witnesses to a document of 1470 in the Hampden archive include "---- Benet of Spene and John Spene of Spene" and reference is made to "George Coks late of Spene". Perhaps John Spene is related to William Spene, rector of Bradenam, who in 1408 purchased Overhall (now The Farmhouse) in Lower North Dean. The surname seems to have been lost locally - there are no Speens or Spenes in the telephone directory - but the placename is clearly 15th Century and could be earlier.

Nick Robinson - 562176

Ed. More More!!

## OPEN ON SUNDAYS

I have been struck recently how apt this sign (normally reserved for shops) would be on our church notice board!

Through some quirk of history we have now been landed with two "sabbaths", Saturday (the original sabbath still enjoyed by Jews and Seventh Day Adventists) and our traditional Sunday.

Controversy aside though, most of us are now rather glad about having the "Great British Weekend", when we grab what little time is available to enjoy family life.

With this in mind it has been encouraging to see families coming to worship in Speen. On asking one couple why they had started coming they said they wanted to escape once a week for a bit of peace and quiet, for some space just to think!

Speen Baptist Church offers space to think, to be quiet and to look for 'meaning'.

Many folk I come across are now so terribly "stressed out" by a whirl of work related and family activity that little opportunity is found for actually working out what it's all for!

I sometimes think of life being like a train journey ... we find ourselves hurtling along and as long as the wheels are turning, everyone's happy. But what about the purpose of our journey, the destination even? Aren't these vital issues?

Many have already found completeness and purpose in a living relationship with God. What about you?

We are "Open on Sundays", 10.30 am for those who want space to stop and think.

Rev Charlie Radburn - Speen Baptist Church

## SPEEN CRICKET CLUB - HAVING A BALL!

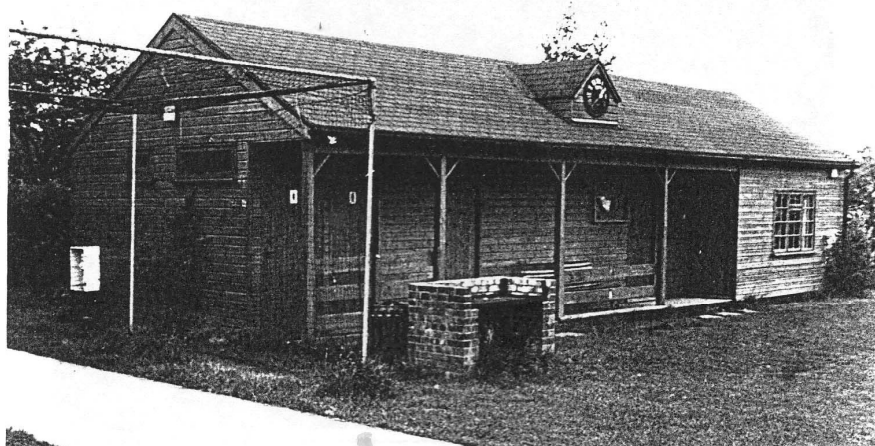
Two photographs hang in the Speen Pavilion which give evidence that cricket was played in Speen in the 1930's. The team was obviously very successful as they finished top of their High Wycombe and District League both in 1935 and 1936. The club was then under the Presidency of Major Caldwell.

Although the club has no definite records, it is thought that cricket may well have been played somewhere in Speen as far back as the turn of the century.

Speen Cricket Club as it exists today was re-formed in 1966 and from recorded minutes of meetings it is possible to trace the development of the club right up to the present day. At the meeting of 7th April 1968 it is rather poignant to read of "the tribute expressed by the club to Major Caldwell who had passed away recently".

Under the captaincy of Ian Maciver and the vice-captaincy of Ian Price, the club's recent playing record is highly commendable. In each of the last two years, more matches have been won than lost and some very strong opponents have been defeated. Unfortunately, I cannot be as optimistic about prospects for this season, as many of the youngsters who were responsible for our success are now at college or work away from home. Any up and coming youngsters who are around 15 or 16 years of age and who are interested and show enough potential will certainly be given regular games.

The philosophy within the club is that everyone who plays should enjoy their cricket and be involved as much as possible, whether that be with the bat or the ball.



The club has a full fixture list and plays over 20 matches through the season, stretching from the end of April to mid-September. Matches are always friendlies, usually starting at 2.30pm on Sundays. League cricket is no longer played at Speen. On the social side preparations are well under way for the Speen Cricket Club Annual Ball to be held on the 3rd September. The Ball has proved to be very successful and enjoyable over the last 4 years. As this is the only fund raising event in the

Cricket Club's social calendar, your support would be most appreciated.

Details about the club, fixtures and activities can be obtained from **Mike Bounds** (488572), **Keith Rosling** (488643) or **Mike Thomas** (488269).

New players and enthusiastic Sunday spectators would be very welcome

**Mike Bounds**  
Hon. Secretary  
Speen CC



**PETER F. BOOTH** F.B.C.O.

OPTOMETRIST

A SIGHT CARE PRACTICE



• EYE EXAMINATIONS

FASHION & BUDGET FRAMES •

• CONTACT LENS  
FITTING

CHILDRENS  
FRAMES •

• SOLUTIONS AND  
ACCESSORIES

SUN SPECTACLES •

• SAFETY SPECTACLES

MAGNIFIERS •

• VDU ADVICE

CORDS & CHAINS •



120 STATION ROAD, CHINNOR

TEL: KINGSTON BLOUNT (0844) 351564





# MY NAME IS... JOHN ROGERS

When North Dean was approached by Speen to join forces with them to produce a news letter, it was met with a lot of enthusiasm. The Village Hall Committee has given the idea a lot of thought in the past, but as a small village, to produce one on our own was not really viable. Now the idea can become reality, but its success will depend on the interest of you, the readers. We want it to be more than a list of What's On, so help us to make it interesting and what you want from a newsletter.

Have you a hobby that may be a bit different, what have you seen in the village that you like, dislike, or think could be changed? Let us know.

I was born and brought up in the village, and at that time knew everyone in it. Sadly I don't now, my fault perhaps, is it time we brought back that community spirit? If you have new neighbours or know someone who is bereaved, on long term sick, or in hospital there will be some of our readers who would like to help.

Why not write a short item about yourself, we could feature someone different in each issue.

I will start the ball rolling, My name is John Rogers. Because of a shortage of somewhere to live I moved away from the village for a short time when I got married. I moved back with my wife Pat and son Stephen and now live at the lower end of the village two doors from where I was born. I am a member of the Village Hall Committee and also on the Parish Council. My Hobbies are gardening, D.I.Y, and boring people with my efforts with a video camera, I play golf (badly), snooker (for relaxation) and table tennis for a B.T. team. If anyone would like to share any of these



interests, especially a game of golf, please let me know.

There is a lot of scope for starting new clubs or get togethers. All you gardeners, you may have surplus plants or produce to swap. D.I.Y.ers you may have some tools you could lend, or have no further use for. I'm sure someone would like to know, and of course there are lots of sports to enjoy for more than one person.

The committee is now looking at a complete refurbishment programme for the Hall. The replacement of the roof is the first priority and the first donations have already been made. Why not put your name on the list so we can get the job done, and make the Hall a better place to use, and why not use it more yourself.

Anyone know a good joke?

Perhaps we could feature a North Dean joke in each issue. Have you heard the one about the Englishman, the Irishman, and the Scotsman? No? Well someone will have, watch this space next issue.

If you have any items for the next issue please contact **Megan Chinn** - 563074, and she will do her best to get them published.

I hope you will find this new venture interesting, but it can only be so, if you, the readers make it so.

## **John Rogers**

Chairman - North Dean Village Hall

*Ed: Thank you John. This is the first of a "MY NAME IS" column. Who's next? Or perhaps you can nominate somebody for an interview*

## **NORTH DEAN VILLAGE BARBECUE**

This event in aid of the Village Hall was very well attended by over 100 people, taking advantage of what turned out to be wonderful barbecued food, Beechdean Ice cream and hot sunshine. It was a great chance to spend time with old friends and make new ones too, which is after all what rural life should be about. It was brilliant to watch all ages enjoying a game of "Nick's" Cricket (at least one person knew the rules!).

Thank you to all who contributed to make the occasion a great success. **R.R.**

# NORTH DEAN VILLAGE HALL COMMITTEE : MAKING FRIENDS



As we know this newsletter will be delivered to all houses in the area. May we the Village Hall Committee take this opportunity to welcome all new residents to North Dean, and hope to meet you all, maybe at one of our future events.

Some of the events enjoyed by villagers this year so far are:-

- JAN - Annual lunch for invited senior citizens with entertainment
- FEB - Valentine's Dance
- MAR - Race Night
- APR - A.G.M. combined with North Dean Historical Slide show
- MAY - Clay Shoot  
- North Dean

Historical Slides at the home of Bill and Megan Chinn

These are just a few of the activities we as a committee work hard to promote. Maybe you can think of other ways to use our hall to its full potential.

I wonder if the residents of our village realise what a 'gem' we have, I had almost taken it for granted, when I had an enquiry for a booking from a lady who waxed lyrical on the setting and charm of our hall.

So please support us, you will be surprised how much richer your life will be and the new friends you will make - you don't need to be lonely if you are prepared to make the effort.

**Megan Chinn** - Village Hall  
Booking Secretary 563074

## NORTH DEAN PLAYGROUND

When more and more families with younger children began settling into North Dean, a group of mothers felt it appropriate to plan for a new updated play area suitable for all ages; i.e. babies, toddlers, and active children.

The original group of mothers has slightly changed but the intentions have remained the same.

At the beginning, initial

fundraising was very low key but by the start of 1992 we had launched the **NDPGA - North Dean Playground Appeal**. The appeal was launched when it became apparent that a large amount of money would be required to fund such a project. Together with Beechdean Dairies and NDPGA the concept of a Summer Ball and Farm Fun Day was conceived. Both

events were hugely successful and extremely well supported and we were instantly closer to realising the re-building of the playground.

Throughout this two year period we have liaised between our Parish and District Councils and were very fortunate to be awarded grants towards the cost of the playground. A very large amount of paperwork has been generated from this project and it still continues.

Because of the Summer Ball success a second very successful Autumn Ball was held which once again proved to be highly popular and a financial success for our playground appeal.

## INSTALLATION OF THE PLAYGROUND

The first stage of the playground has been installed. The perimeter of the playground has been edged and fenced by ourselves. We hope to have completed this stage in the next few weeks. It would be greatly appreciated if the bark area could be kept as tidy as possible.

A large slide from Wicksteed's will be installed during the middle part of the summer, thereby completing the playground.

## ACKNOWLEDGEMENTS

Perseverance, sheer hard work and a vision of the future have all been the main ingredients of this project.

Special tributes must go to Andrew and Susie Howard at Beechdean Dairies - including Nick and Jez, Chris and Claire Wise, Kevin and Sarah Booth. A Thank you must go to everyone who has either helped us or supported our fundraising, and finally a final thank you to North Dean Village Committee for allowing us to make it happen!

**Sarah Booth** - NDPGA



# ***SPEEN CHURCH OF ENGLAND (V.A.) FIRST SCHOOL***

## ***— SERVING VILLAGE CHILDREN***

Speen School has a long tradition dating back to 1874, although the present school building was completed and opened in 1966.

The school caters for children between the ages of five and eight and there are 48 pupils on the roll at the moment.

Speen School offers a broad and balanced curriculum, in line with the National Curriculum which is extended to meet the children's individual needs.

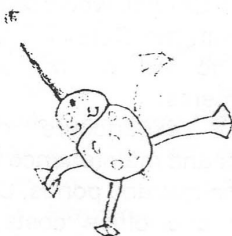
Strong links are maintained with the villages of Speen and North Dean, Lacey Green and the Parish Church of St. John's. The vicar visits the school regularly and there are services at least once a term at St John's Parish Church in Lacey Green.

The school aims to work in partnership with parents and has a very strong Parent Teacher Association.

With guidance from the school, the PTA organises a series of School Clubs which take place after school and on Saturday mornings. They aim to extend opportunities to explore areas such as computing, music and sport for those children who may wish to develop these as hobbies, in addition to providing an introduction to subjects outside the National Curriculum at this age, such as French.

The PTA has a varied programme of social and other events - which are open to all the local community to attend.

Money raised from such events has enabled the school to refurbish its kitchen area for the children to take part in home economics, purchase a robot and other computer equipment and programmes, and much more.



### **School contacts**

Headteacher - **Mrs D.J. Nayna**  
- 0494 488321

Parent Governor - **Mrs Alice Corrick** - 0494 565380

PTA Secretary - **Mrs Amanda Bacon** - 0494 562166



## **Q. Who owns four village ponds and 6 bus shelters**

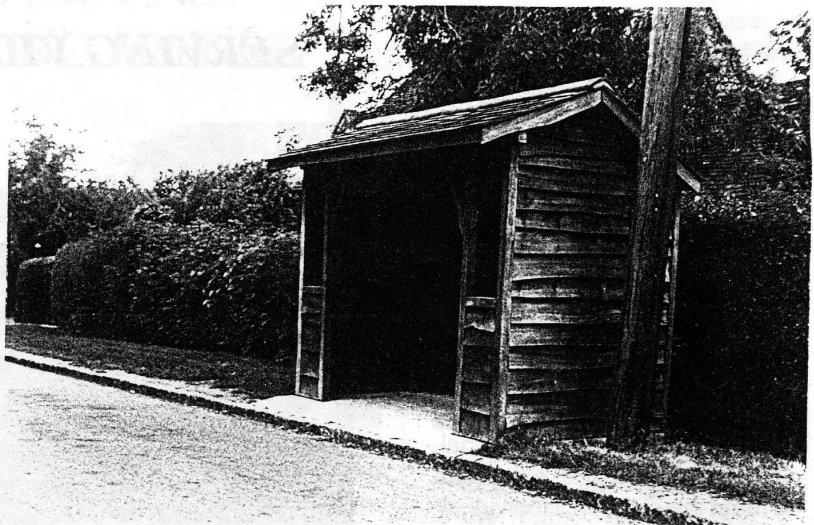
Parish Councils are the oldest form of representative government in the country, tracing their ancestry back over a thousand years to the "Folk Moot" of Saxon times. The present Councils were established by Act of Parliament in 1894. Lacey Green, Speen and Loosley Row were all part of the "Upper Hamlets" of Princes Risborough Parish originally.

In 1934 it was proposed to install a sewerage system in Princes Risborough to be paid for from parish finances. The residents in the Upper Hamlets objected to this charge which provided them with no benefit and the present Parish Council was formed and first met in March 1934.

Parish Councillors are elected for four years and numbers in each Parish are determined by the population. Our Parish has 7 councillors. In 1986, in order that Speen could have its own councillors, your present Chairman petitioned that the Parish be "warded"; consequently five councillors are elected from Lacey Green and Loosley Row and two from Speen.

Parish Councils have by law to meet at least four times a year, meeting must be held after 6.00 p.m and be held in a premises where the public can be admitted. All meetings of course are open to the public as observers. In our Council, it has been our custom to invite members of the public after the Council meeting, to take part in informal discussions with the assembled councillors on any matters of local interest.

All correspondence and records are handled by a Clerk appointed by Councillors. Parish Councils are responsible for Burial Grounds, Allotments, Street lighting, Open Spaces, Parks,



Footpaths, Ponds and other amenities in the ownership of the Parish. In our Parish we have none of these facilities. Our only property is the four village ponds and the six bus shelters.

Parish finance is obtained by a precept we submit to the District Council who collect the sum with the Council Tax and remit to us in two annual instalments.

Our expenditure covers repairs and maintenance to our bus shelters and ponds, Clerk's salary and office costs, and Grants to local organisations such as Village Halls and Playing Fields for community purposes.

Every Planning application within the Parish is submitted for our comments. We have no say over decisions but hope our constructive comments are taken into account by the Planning Committee of the District Council. We submit twice yearly reports to the County Council on the condition of Public Footpaths in the Parish; any problems we discuss with the landowners who are responsible for cost of maintenance.

Parish Council meetings often discuss items of importance in the locality although they have no powers

to effect a remedy: The condition of roads and traffic problems are usually on every Agenda.

We have representatives on Committees within the County. We are members of the Association of Local Councils, the Bucks Council for Voluntary Services and the Chiltern Society.

Once a year an Annual Parish Meeting is held which is open to any resident in the Parish to raise any matter of local importance they wish; usually following the March Parish Council meeting. Parish Council meetings are held every month alternating between Lacey Green Methodist Schoolroom and Speen Village Hall.

Parish Councils are unaffected by the proposed "Unitary Authority" reorganisation which is anticipated within the next three years.

The Parish is geographically quite large having a 12 mile long boundary.

Minutes of every Parish meeting are available from the Clerk and displayed in the Post Office at Loosley Row, and the Public Library.

The present Councillors for Speen, are **Don White** (Chairman) - 488437 and **Jude Awdry** - 488607.

## **A. YOUR PARISH COUNCIL**

## GOING FOR GOLD!

It's a real pleasure to have alongside Footsteps Club a number of young people who are "Going for Gold" by undertaking their Duke of Edinburgh community awards.

The Footsteps Club meets at Speen Baptist Church and caters for children aged 6 - 12 who would like to learn about the Christian faith in a happy and active environment. It's been going for 5 years.

Meeting on Wednesdays at 6.15 pm up to twenty children get involved. There are plenty of different things to do, such as discovering the Bible's message, craft, music and singing, quizzes etc, plus games and refreshments. There are even prizes for those who do well in their activities, and occasional outings.

One event we all look forward to is the annual week's camp at Carrotty Wood in Kent, and again this year an eager group of young people will be going.

Into all this activity come three teenagers, two of whom are doing their bronze Duke of Edinburgh awards and one his silver.

The award scheme encourages the development of

skills that are pertinent to their interests, and in this case full involvement and responsibility are mixed with workshop sessions to train in children's work to give a full and rewarding programme.

The Footsteps children are delighted that the teenagers are taking such an interest in

them and enjoy them being around.

Other helpers are involved too, and we thank them very much for their input.

If you are interested in your children being involved - contact **Charlie Radburn** on (0494) 488758, or just turn up and see what we do.

## SPEEN PLAYGROUP

We are a small friendly group, meeting at Speen Village Hall offering a wide variety of provision for children 3-5 years. Sessions are held on Mondays, Tuesdays, Thursdays and Fridays from 9.30 - 12.00.

Come and see us anytime to discuss your child's needs or telephone **Maxine** on 0844 345490.

*Ed. What a relief it was to be able to send my 3 year old Joshua to Speen Playgroup! Videos and the odd shopping trip were not enough anymore.*

*At Playgroup he makes friends with local children in a happy learning environment. It makes all the difference to our home life too as he finds the needed stimulation we can't always provide ourselves.*



**KNIGHT-LEIGH LTD**  
CHARTERED BUILDING COMPANY

For all your building works —  
large or small

**CONTACT:- Janet or Charles  
Leigh-Dugmore**

*Telephone: Naphill (0494) 563614*

## Rosemary A. Stone

(MSSCh MBChA)

**SURGICAL CHIROPODIST**

**Home visits by appointment**

**TELEPHONE:  
Naphill 562569**

Vivaldi, Stocking Lane, Hughenden Valley  
Bucks. HP14 4NE



## SPEEN W.I. - 'NOT STUFFY'

Speen W.I. meet at 7.45 pm on the first Thursday of the month in the Village Hall. A lot of people who don't know us think we are old fashioned and stuffy. That's why we don't now call ourselves the "Women's Institute" but "W.I." which does sound a bit more with it. Those who belong to W.I., of course, know we are anything but stuffy and we have some lively, interesting meetings, a laugh and chat with people we otherwise would never meet, especially those who go out to work. In April we celebrated our birthday with a party and were entertained by a jolly classical guitarist who sang naughty folk songs. In June we heard about the "Housewife's lot in History". We also go on

interesting trips like a train excursion to Chester in June and the Royal Show at Stoneleigh in July. We did the latter last year and had a wonderful day out with our husbands and friends. We also have an evening trip to Chenies planned this month, when husbands are also invited and we will be looking round the house and gardens and having tea afterwards.

Why don't some of you ladies whose children don't now need you to ferry them here and there and who might like to have an evening out once a month, come and join us? We would love to see you.

Contact - **Barbara Collett** -  
Tel. 488348

## SPEEN YOUTH CLUB - WORLD FAMOUS!

At 7.00 pm on a Friday night groups of young people gather at the Church Hall to celebrate the end of a hard week's work! Speen Youth Club has always been popular with a whole range of young people in the Lacey Green/Speen area. Anyone from 12 upwards is welcome to join the swelling numbers of young people attending the club.

Although the group is run by Bex, Charlie, and Rachel, regular committee meetings of the young people themselves are held to discuss things such as finances, guidelines, subs, equipment and future outings.

The Youth Club has a wide range of facilities and amusements: table tennis and pool tables, darts, table football, a sound system, a computer and the world famous tuck shop!

The Youth Club also organises outings. During the past year, the club has been ten-pin bowling at 'Jardines' in Aylesbury, ice skating at Slough, to the cinema, dry slope skiing at Bracknell and a trip to Chessington is planned for this coming October.

The Youth Club also organises various activities for its members including a Red Cross baby sitting course and a Tie-dyeing instruction evening where many of us ruined T-shirts in the name of art.

If you would like any more details and if any adults would be prepared to come on a rota to 'be there' on a Friday night between 7 and 9 pm once a term, please contact **Bex** on 0494 488758.

Hester Plumridge



### FLORAL CRAFTS

NEW ROAD, WALTERS ASH, HIGH WYCOMBE  
(entrance by SHANA SCHOOL OF RIDING)  
Telephone: NAPHILL 563551

### Flower Craft Shop

ARTISTIC FLOWER ARRANGEMENTS, SOFT TOYS,  
EXCLUSIVE GIFTS, GREETING CARDS, ETC.

### Wedding Flower Studio

BRIDAL BOUQUETS, HEADDRESSES, etc.  
CHURCH and RECEPTION FLOWERS  
FRESH FLOWERS to order

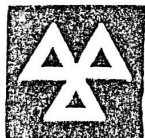
SILK FLOWER DISPLAYS FOR HIRE

OPEN: Weekdays 9.30 a.m. to 5.30 p.m.  
CLOSED: ALL DAY WEDNESDAYS

*Our Service always  
passes the test*

**CAR  
SPECIALISTS**

**M.O.T.**



WHILE  
YOU  
WAIT

**TEST & REPAIR CENTRE**

Free car collection and delivery for servicing and repairs

Old Oxford Road, Piddington, High Wycombe, Bucks. HP14 3BE  
Tel: 0494 881828



**dell**

**brothers**

**Builders, Developers, Plumbers  
and Decorators**

**EST.1948**

**LACEY GREEN, BUCKS.**

**Tel: 0844 344342/346688**

## **NATURE RESERVE IN SPEEN ?**

Warmer, drier days are here at last! Brimstone, Peacock, Small Tortoiseshell, and Orange Tip Butterflies can be seen on warmer days. You will find Primrose, Cowslip, Cuckoo Flowers, Bluebells and Green Alkanet with Hedge Parsley giving colour to road and lane verges.

Some of our resident birds are feeding their young and returning spring migrants will be actively building nests. The Housemartin will be coming back to last years nest.

Did you know that we have a colony of pygmy shrews living in the village!? and that some Goldcrest are nesting very nearby!

Would you be interested in guided walks to see:

- Butterflies
- Orchids
- Birds

How about starting a wildlife group? Could you help? And just a passing thought - did you know that Speen could own its very own nature reserve. Please let me know if you are interested

One last thing, with your help, I would like to make an up-to-date record on breeding birds, butterflies and wild flowers. Any old or new records will help and I will return them to you as soon as possible. THANK YOU.

**Fred Burnham,** Spinning  
Wheel Cottage, Studridge  
Lane. Tel.488303

## **TABLE TENNIS**

A Table Tennis Club has operated in the Village for many many years. It meets in the Village Hall during the winter months (September to May inclusive). Playing conditions are excellent.

In the past season (1993/1994), three Speen teams have competed in the High Wycombe League with reasonable success. The playing standard overall is average to good.

Mainly because of the restricted availability of the Hall, the club's activity is confined to league matches. New members of league standard are always welcome.

Contact:

**Jim Lawrence** (0844) 344610  
**Alan Snowler** (0494) 562082  
**Gordon Locke** (0844) 345892

## ABBAY BARN CONTRACTORS

WEST YARD, SLOUGH LANE, SAUNDERTON, HIGH WYCOMBE

TEL : 0494 562003

Building Supplies for the Professional and DIY

Large Quantities in Stock for Collection or Delivery

- |  |                              |
|--|------------------------------|
| * Sand & Ballast   | * Building Sand              |
| * Cement   | * Flints                     |
| * Graded Topsoil   | * Leighton Sharp Sand        |
| * Reject Stone   | * Type 1 & Type 2 Road Stone |
| * Peashingle for Footpaths & Drives (10 & 20 mm Shingle) |                              |
| * Cotswold Shingle 10 & 20 mm - Samples on Request       |                              |
| * 3, 4 & 6 yard Skips for Hire                           |                              |

OPENING HOURS : Monday to Friday - 7am to 5.30pm  
Saturday - 7am to 12.30pm

## NORTH DEAN VILLAGE FETE

Sat 30th July 1994

This year we are very pleased that Mr Ivor Beeks, Chairman of Wycombe Wanderers Football Club, will be opening the Fete.

Following from their highly successful season this year, Mr Beeks may be able to put together a few football surprises for us, so do make sure that any WWFC supporters are ready and waiting at the 2pm kick-off.

As usual, the Fete will be centred around some very popular attractions. Madame Aquarius (who predicted the marriage of Oliver and Vicky Ryman) will be with us again; Wonky Wizard, the Pigotts Band and Majorettes will be keeping us entertained; skittles, a Coconut Shy, Hoop-La and the Treasure Hunt will test out skill levels and the Bar and Cream Teas should serve well and refresh everyone.

Your help would be greatly appreciated in entering a few competitions such as best Cake, Home-made Wine, Arts

and Crafts, Flowers and, of course the Childrens' Fancy Dress Competition.

Details of all these will be posted to you shortly, so look out for them. Of course, our biggest need is for you to support us (as indeed, we will support the Speen Fete), as all monies raised are being put towards the restoration of the

Village Hall.

This year we are hoping to redecorate the roof, floor and toilet facilities, so.... lots of money is needed!

This, our final request to you, is to please come to the Fete, along with your family and any WWFC supporters to enjoy a very traditional day out.

J. SMITH & SONS (WALTERS ASH)  
LTD

Personal Service From A  
Friendly Family Company  
Car Parks Roads And Drives



0494 562256

280 Main Road Walters Ash High Wycombe



# SPEEN AND NORTH DEAN GOOD NEIGHBOURS - A HELPING HAND

The scheme is now in its third year and a number of people have appreciated help with:-

- shopping and collection of prescriptions
- hospital visits
- support for elderly, lonely or recently discharged hospital patients
- welcoming new residents in the villages
- occasional dog walking
- baby sitting.

We are delighted that over 50 people have volunteered to help.

Thank you to EVERYONE

## HOW DOES THE SCHEME WORK?

If you need help, you can telephone a receptionist, who will give you three alternative names and phone numbers of volunteers to ring with your request. Please call between 8-9am or 6-7pm

### Telephone Receptionists

Elsie Cromach, 2 School Cottages - 488614

Poppy Ellis, The Old King George - 488548

Edna Wall, Water Lane 488657

Any payment for services should be arranged between individuals; a contribution of £1 per journey is suggested for the transport service.

Car owners must check they are insured to carry passengers. Users of a service do so at their own risk.

Last year a baby sitters course was run in conjunction with "The Youth Club" for the teenagers. The aim of the course was:-

- To make babysitters aware of their role, rights and responsibilities as well as those of the family for whom they are babysitting;
  - To give babysitters confidence in coping with problems which may arise while a child is in their care.
- 14 youngsters gained their Red Cross baby sitting certificates.

This year some senior citizens have been enjoying gathering from time to time for "Tea and Chat".

The next "Tea and Chat" is on 1st July 1994 from 3pm at the home of Muriel Groves, Talgarth, Chapel Hill, all senior citizens are very welcome to join us.

An excellent team of 6 'Good Neighbours' took part in the Village Quiz.

Any suggestions and offers of help are always welcome

## PLEASE REMEMBER - THE SCHEME IS FOR EVERYONE TO USE

Further information from:-  
**Gloria Holmes**, Cherry Dell,  
Speen. Tel.488420



## SPEEN VILLAGE HALL

The brick and flint building in Studridge Lane was completed in 1894 and became known as the Temperance Hall and used for services for about 20 years.

In 1924 it became available for community use and was purchased as a Village Hall.

Over the years it has been put to good use by and for the community, and is used regularly today by a good proportion of the village. It is managed by a committee who see to the necessary maintenance and repairs.

In the next edition of Speen and North Dean News a fuller account of the Village Hall's History will be printed.

Village Hall Committee representative:  
**Stan Bale** - 488015

## RAINBOW DECORATING

Member of the Dulux Network

### All types of work undertaken

*The Manse, Hampden Road,  
Speen, Princes Risborough,  
Bucks, HP27 0RU  
Tel: (0494) 488758*

## STEPPING



Louise Vincent

P.O. Box 117, Henley-on-Thames Oxon RG9 1SY  
Tel: 0491-577076

STONES   
(Emp. Agy)

Nannies  
Maternity Nurses  
Mother's Helps  
Au Pairs

## THAT'S LIFE!

That's Life is a group of young people aged 12+ interested in Christianity who meet on Sunday evenings to discuss, socialize and generally have a good time! We explore young people's attitudes towards religion in a relaxed and informal manner.

Recently we have covered many relevant topics ranging from 'the Future' to 'the Bible - Fact or Fiction?', where everyone has participated and voiced their opinions. Last week our topic was Near Death Experiences and we listened to a tape of one man's experience which provoked a very interesting discussion.

Sometimes these discussions are led by members of the group who have a particular interest in the subject, and we often watch videos to illustrate points on a wide variety of topics. (Last year we saw a video about revision and school work, which inspired us all!!) Even the most unlikely subjects are tackled and subjects such as abortion and euthanasia ensure we never have a dull evening.

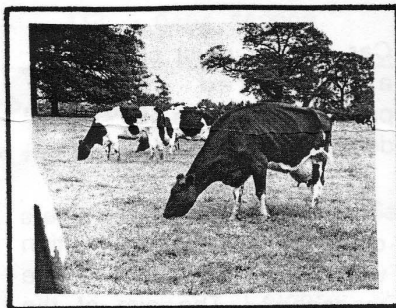
There are lighter sides to That's Life too we frequently have trips to ten-pin bowling, skating, the cinema and restaurants.

If you would like more details the person to contact is Rachel on 488758

Jo Pawlik



## BEECHDEAN DAIRIES



For those of us unaware of us, Beechdean Dairies is a company that was started in 1989 in North Dean by Andrew and Susie Howard to manufacture and sell a high quality Dairy Ice Cream.

All the Ice Cream is made with fresh milk from the Beechdean Farm's herd of Friesian cows. Initially the Ice Cream was sold in a handful of local stores and pubs, but after five years of selling around London and the South, we now have the privilege of supplying Ice Cream to Theatres, Leisure Centres, Delicatessens, "Scooping" parlours and many more shops, pubs and restaurants.

Beechdean Dairies Parlour Shop is open every Sunday afternoon between 1.30 and 4.30, where you can buy our Ice Cream or just come to visit the Farm and the animals. These include the goats Peanut, Pumpkin, Sugar and Spice; the Giant rabbits Salt and Pepper; chickens, cows with calves, ponies and Jacobs sheep. We have recently acquired two gorgeous Highland calves which are a little shy at the moment, but with a few visits from you on Sunday afternoons they are bound to be more confident soon.

We look forward to seeing you.

Beechdean Dairies - 563980



## TENNIS CLUB

The tennis court (situated on Speen Playing Field) may be booked and paid for on an hourly basis by filling in the sheets located in the box at the side of the court. However, an annual subscription provides better value for money, is easier to administer, and ensures the financial viability and future of this court. The current annual subscriptions, which are the lowest payments for any privately maintained public court in the County, are as follows:-

Family	-	£30
Adults	-	£18.50
Student (in full time education)	-	£14
Juniors (children in school)	-	£14

The subscriptions are used to maintain the court, nets and wire surrounds. For further details regarding membership and booking rules, please contact either of the following:-

**ROGER CRAFT**, Chairman  
(0494) 488343  
**BOB JOHNSON**, Secretary  
(0494) 488593

If you are members already, please encourage friends and any new neighbours to join and support Speen Tennis Court.

## CHRONICLE OF NORTH DEAN

If you want a copy of

" A Preliminary  
CHRONICLE OF NORTH DEAN"

by

Nicholas Wheeler Robinson  
(pub Dec '93; 2nd Edition 1994 - Price £2)  
ring the author on 562167

"A most professional survey....beautifully  
produced" - Dr Margaret Bonney,  
editor 'The Local Historian'

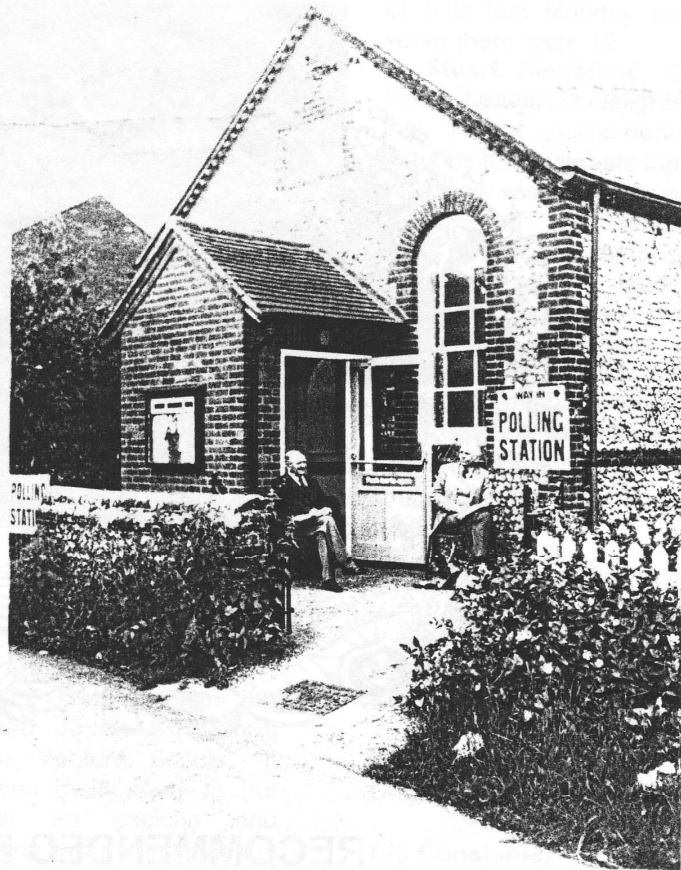
\*\*\*\*\*

"Fascinating" - Chiltern News

\*\*\*\*\*

"Very lively and attractive production"  
Hugh Hanley Bucks County Archivist

## EUROPEAN POLLING DAY



9th June 1994

Well done every one who  
turned up to vote at Speen  
Village Hall.

With the national average  
standing at 36% of the  
population voting. We  
managed almost half of the  
electorate at 47%.

## OUT AND ABOUT WITH SPEEN THEATRE CLUB

Speen Theatre/Outings  
club is a subgroup of Speen  
Playing Field Association.

We organise monthly  
outings, usually with return  
travel from the village to  
theatres, concerts, opera and  
ballet performances and other  
events. In the last year we  
have seen "An Inspector calls",  
"Crazy for You", "Piaf",  
"Carousel", and Paul Merton at  
the London Palladium. We  
went to a Christmas Carol  
concert at the Albert Hall,  
Torville and Dean at Wembley  
and will go to the Royal  
Tournament, and open-air

theatre production and other  
events soon.

Annual subscriptions are  
£12.50 per family and £6 per  
individual. This entitles you to  
early booking of 2 tickets per  
individual member, or up to 5  
per family. We make a small  
profit on each trip and all  
profits are paid to the Playing  
Field Association to help  
maintain the field, pavilion etc.

Subscriptions are due in  
July and we welcome new  
members from Speen and  
outside. We have regular pick  
up points for coach travellers in  
Hugghenden and Wycombe as

well as at Speen. Plans for the  
future include trips to the Mill at  
Sonning for dinner & a play,  
and to the opera in Oxford.  
Members receive regular  
details of outings.

To join us, please contact  
**Sheila Tidball** - Tel.488377 for  
further details



**THE OLD PLOW BISTRO AND RESTAURANT  
AT SPEEN**



**RECOMMENDED BY :**

**THE ACKERMAN MARTELL GUIDE 1994**

**THE GOOD FOOD GUIDE 1994**

**THE EGON RONAY GUIDE 1994**

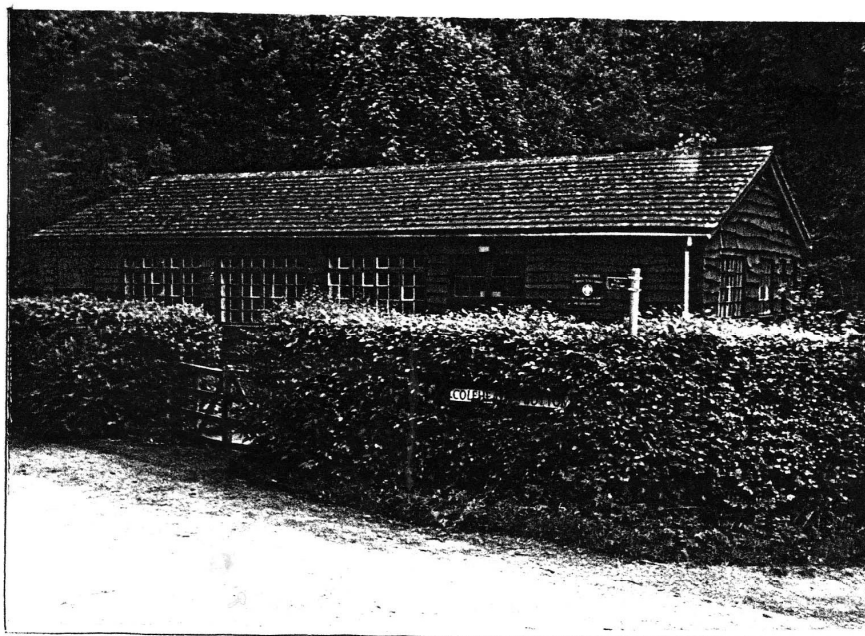
**THE MICHELIN GUIDE 1994**

**THE SUNDAY TIMES**

**The Old Plow Bistro and Restaurant at  
Speen, still owned by Olivia and Malcolm Cowan.**

**Reservations for the bistro and restaurant can be  
made on (0494) 488300.**

# SPEEN AND LACEY GREEN SCOUT GROUP - THRIVING AND GROWING



Speen's Scout Group has undergone a remarkable transformation in recent months. From being down to just a few Cubs and Scouts and desperate for leaders, they now have a new Beaver Section, some new leaders and over 30 Scouts in total.

In fact so rapid has been their growth that they are still looking for new leaders and helpers just to cope with the new enthusiasm.

The **Equinox Venture Unit** up at Naphill and the District Team have been giving us some extra temporary assistance.

**Margaret Gray** who leads Beavers says "It has been really exciting being able to re-start the Beaver Colony". We now have 10 boys and girls plus a waiting list for those who have yet to reach the minimum age of 6 years. The way things are moving, our Wednesday evening meetings will soon reach the maximum of 24 Beavers".

**Patrick Marshall** - known to everybody as "**Roo**" - has taken over the Cub Pack with

help from **Catherine Foster** (Assistant Cub Leader) **Ian Boll** and **Jason King** from Equinox Venture Scouts. "It has been really easy to put together an exciting and interesting programme for the Cubs." Ian who is also studying for A levels added "I have taken so much out of scouting with the Speen and Lacey Green Group, including a major international camp in Holland, it is a real pleasure to be putting something back by helping at Cubs." The Cubs meet on Wednesday, after the Beavers.

**Bill Constable** has taken over as Scout Leader with the Group and has worked with just a few Scouts and one Leader. So we often got together with the Speen Scouts for such events. In fact," says Bill, "the first time Ian Boll and I met was at our joint camp, 'Bucks Clog 90' in Hedenesse, Holland."

With assistance from **Jerry Clarke**, who is applying for a Scouters' Warrant, and **Colin Hobdell**. The Scout Troop has grown every week from a start

of 5 to last Monday evening when there were 12.

**Stuart Stansfield**, Group Scout Leader is delighted at the recent turnaround in fortunes and suggests that any boy or girl wishing to become a member of this revitalized their Scouts for some years. "When I was a leader at Radnage Scouts, we were a small troop like Speen and I found it was difficult to take on some of the more adventurous activities and challenges with Group or any potential helper or leader, contacts one of the leaders below:

**Stuart Stansfield**,  
All sections - 0844 344005

**Margaret Gray**,  
Beavers - 0844 347094

**Roo Marshall**,  
Cubs - 0494 881766

**Bill Constable**,  
Scouts - 0494 483706

**Peter Reading**,  
Ventures - 0494 438642

## Age Ranges & Meeting Times

Beavers - 6 & 7 years  
Wed - 5.15 to 6.15pm

Cubs - 8 to 10 years  
Wed - 6.30 to 8.00pm

Scouts - 10 to 15 years  
Mon - 7.30 to 9.00pm

Ventures - 15+ years  
Mon - 7.00 to 9.00pm

All meetings are at The Scout HQ at Chapel Hill, Speen, except Ventures who meet at their HQ behind the Village Hall on Main Road, Naphill.

**elevenSEVENTY**®  
1170am

# LOCAL LINE

Local Line is the practical arm of **elevenSEVENTY**AM providing a communications channel through which individuals and local organisations can reach the community with useful information. An

off air Advisory Service is also in the pipeline. Local Line is a point of liaison between individuals, organisations and the community and is here to enhance their service, not replace them. Local Line will also be offering Special Focus Weeks in conjunction with local or national events.

Amanda Gee is running Local Line and would like to hear from you if you have details of local events to pass on to listeners . . . Information that helps the community, e.g. health, welfare, fêtes, social clubs, charities, etc. is always welcome.

Please fax or write to Amanda (see Noticeboard for fax number and address).

N.B. for events with a specific date please ensure details arrive at least two weeks beforehand.

"We want Local Line to be a two-way channel" says Amanda, "the more information we have, the better Local Line will be".



## YOUTH · ENQUIRY · SERVICE

ST. MARY'S STREET, HIGH WYCOMBE, BUCKS HP11 2HE. TEL: 437373

### OPENING TIMES

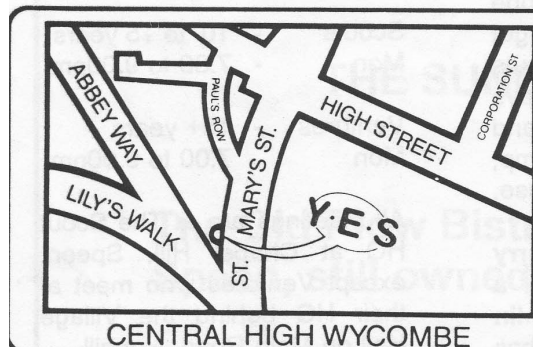
MON-FRI: 11.00am - 5.00pm, other times by appointment

**FREE and CONFIDENTIAL  
INFORMATION, HELP and  
SUPPORT. A CHANCE TO TALK  
and BE LISTENED TO.**

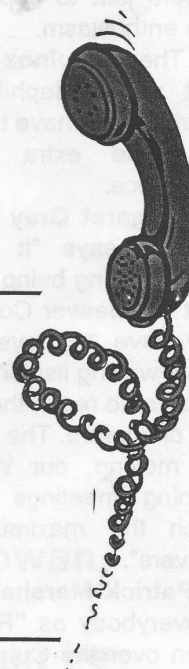
Questions and problems of all  
types: Leisure, Work,  
Education, Accommodation,  
Money, Health, Sex, The Law.

**VOLUNTEERS:** We need extra  
people to staff our Service,  
particularly daytime.

**ACCOMMODATION** - let us  
know if you have  
accommodation to rent.



**Y·E·S**





## JULY

- 1st Speen and North Dean Good Neighbours - Senior Citizen "tea and chat", at Talgarth, Chapel Hill, Speen at 3 pm
- 4th Library Bus - 10.20 to 11.00 - Bus Stop top of Hampden Road
- 9th Speen Village Fair - Speen Playing Fields - 2pm - to be opened by Bill Giles
- 15th Speen First School "Its a Knockout" with Bring and Buy, Tea and Cakes - 1.30 pm - all welcome
- 16th North Dean Village Hall Committee - Pig Roast in aid of Multiple Sclerosis - 8pm - tickets from R.Pyle (562448), Pat Rogers (562041)
- 16th Theatre/Outings Club trip to Radley College for Last Night of the Fireworks Proms - Tickets from Jo Keattch (488629)
- 18th Library Bus - 10.20 to 11.00 - Bus Stop top of Hampden Road
- 22nd Theatre Club outing to Royal Tournament - tickets from Sheila Tidball (488377)
- 25th to 31st Lighthouse Children's Holiday Week - Bury Field, Great Missenden, further details from Rachel Radburn (488758)
- 30th North Dean Annual Village Fete - 2pm - To be opened by Ivor Beeks, Chairman of Wycombe Wanderers Football Club

## AUGUST

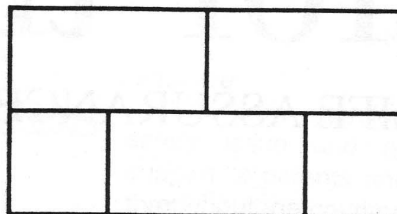
- |              |   |
|--------------|---|
| 1st          | Library Bus - 10.20 to 11.00 - Bus Stop top of Hampden Road |
| 15th         | Library Bus - 10.20 to 11.00 - Bus Stop top of Hampden Road |
| 21st to 28th | Footstep's Camp, Carrotty Wood, Tonbridge, Kent             |
| 29th         | Library Bus - 10.20 to 11.00 - Bus Stop top of Hampden Road |

## SEPTEMBER

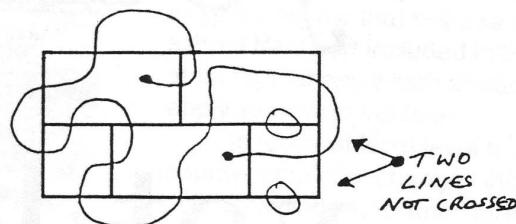
- 3rd Cricket Club Annual Ball - Marquee at Speen First School - Tickets from Mike Bounds (488572)
- 12th Library Bus - 10.20 to 11.00 - Bus Stop top of Hampden Road
- 17th Speen Playing Fields Pub Nite - 8pm - Speen Village Hall - Tickets from Mary Craft (488343)
- 26th Library Bus - 10.20 to 11.00 - Bus Stop top of Hampden Road

Try this baffling puzzle which is guaranteed to keep you occupied during dull conferences or meetings. To be honest, we don't think it can be done at all, so don't blame

What you must do is, using a pen or pencil, draw a *continuous* line so that it crosses each line in the grid printed here. You can only cross each line *once*. Copy the grid carefully and keep trying . . . have fun!



INCORRECT EXAMPLE



# CHESSINGTON WORLD OF ADVENTURES

October 8th 1994

A reminder to all Footsteps Club members and their families plus all Youth Club members.

By popular demand we are repeating a very successful trip we enjoyed a few years ago

If you haven't got your forms filled and money in you could be left crying - there are only 50 seats.

**Total cost £11.50 including coach.  
Excellent Value!**

Come with us and have a great day out.

Should you not have received a form there are more at Speen Church Hall.

1ST MEETING AT  
THE MANSE  
SPEEN  
MAY 29<sup>th</sup> 1994

# Be prepared

PENSIONS

# for the life

LIFE ASSURANCE

INVESTMENTS

# you don't

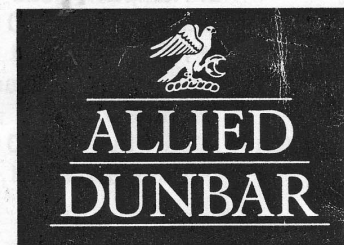
PROTECTION

# yet know.

MORTGAGE SERVICES

Contact **Jeff Leeks** on **0494 563188** or return the coupon below.

*For all your financial planning*



To: **Jeff Leeks** FIPM Financial Planning Consultant representing Allied Dunbar Assurance plc which is a member of Lautro. Ashleigh, 183 Main Road, Naphill, High Wycombe, Buckinghamshire HP14 4SD.

*Yes, I'd like to know more about how Allied Dunbar can help me with financial planning.*

Name.....

Address .....

Postcode..... Telephone .....