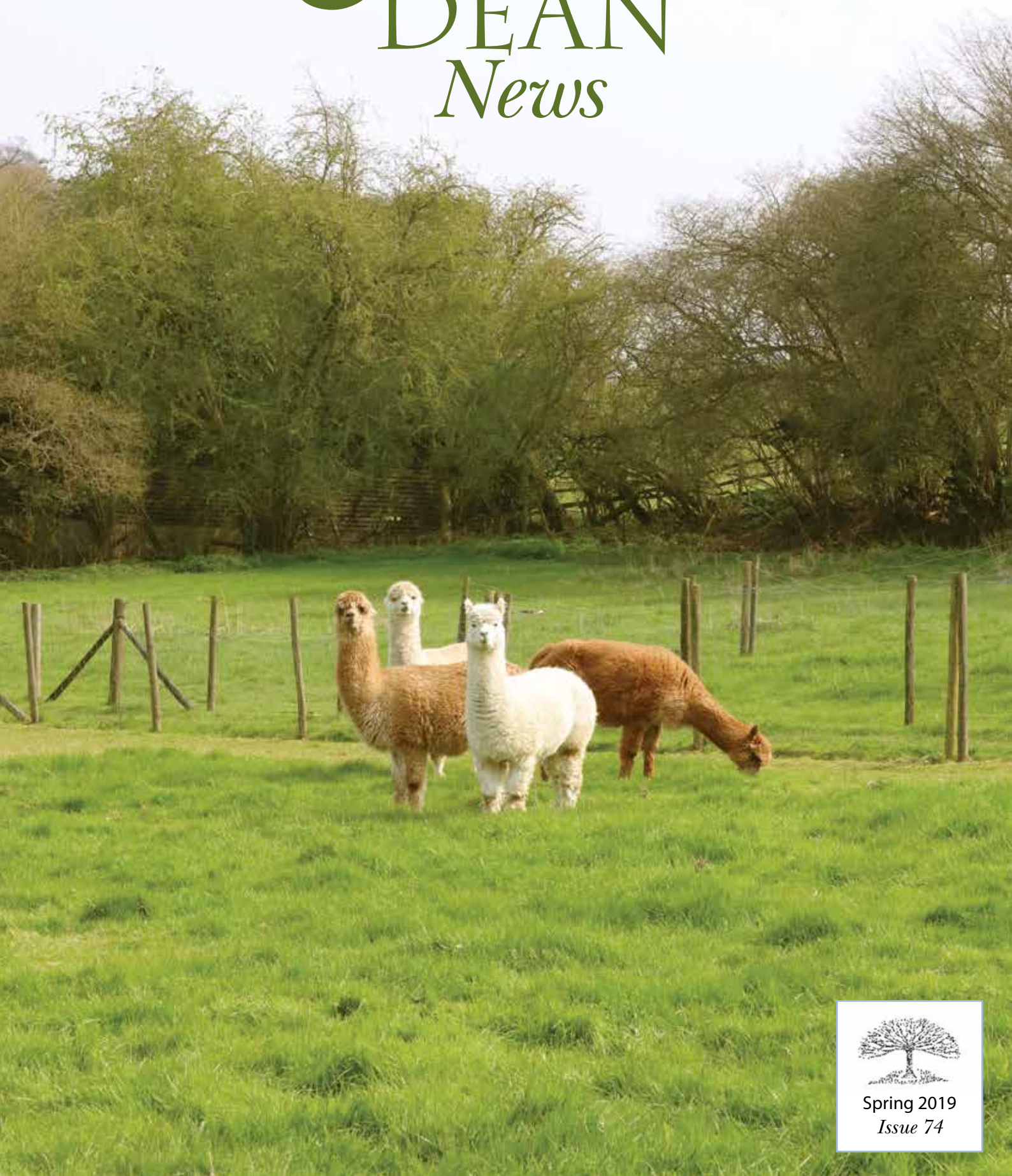


THE SPEEN & NORTH DEAN *News*



Spring 2019
Issue 74



simply
beautiful
gardens

Alchemille has been designing and creating beautiful, innovative, inspirational outdoor spaces since 2004. From urban courtyards to country estate gardens, we can make the simply beautiful garden of your dreams a reality.

FROM CONCEPT TO CREATION

01494 488072 • 07909 936718 • design@alchemille.co.uk

www.alchemille.co.uk

Get smart in your garden

From comprehensive plant care advice, to regular maintenance or a one-off project, our experienced team is ready to smarten up **your** garden.

For more information contact
Andy Merriman on

07827 290770



Working in association with Alchemille Garden Design

Welcome!

to the Spring edition of
The Speen & North Dean News.

The sun is shining and there's lots to look forward to in our lovely villages as summer approaches - there's a cricket match, a golf tournament, a new event - The Midsummer Shindig, the legendary Speen Fun Day and, following it's huge success last year, they will be Rocking The Hill again in North Dean ... and that's just in May and June.

This year's theme for the Speen Fete in July is **Pirates**, so plenty of time to yo-ho-hopefully get scarecrowing and decorating the village in a nautical theme, followed by North Dean's Fete in August.

And that brings us to September and the wonderful bi-annual Speen Festival, celebrating the arts and creativity in the Chilterns. Auditions are underway for the show, which this year is Peter Pan, and there are plenty of openings for backstage volunteers and helpers in all areas of the festival, so if you'd like to be part of this wonderful community collaboration, do get in touch with Cat Cook, who is once again at the helm this year.

Many thanks as always to everyone who takes the time to submit articles and photos for the magazine - it wouldn't exist without you!

Jacqui Laing

Contents

What's On	5
Speen C of E Infant School	6
Tiddler and Toddler Playgroup	7
Great British Speen Clean	7
Speen Church	9
North Dean News from the Valley	11
King William IV Update	13
Brownies and Guides	13
Speen Helping Hospices	15
Speen Village Hall	15
North Dean Sunday Lunch	17
Speen Fete	19
Speen Festival	20
Beechdean Down on the Farm	23
Wildlife Watch	25
Speen Playing Fields	27
North Dean Neighbourhood Watch	29
Speen Heritage Group	29
Who's Who	38

Next Edition

Copy for the next edition is **due by 20th June** with a planned publication date of mid-July. Please send photos separately from text, together with captions and a consent form (downloaded from the SNDN website www.speenbucks.org.uk) if any photos are of children. Please send to **editor.sndn@speenbucks.org.uk**.

With grateful thanks

To Wycombe District Council,
Hughenden Valley Parish Council,
Speen Stores Charity Committee and
all our advertisers for their support
of this magazine.



Welcome Packs

The Good Neighbours scheme was set up many years ago and is now run by Pat Richardson in Speen and Judith Broadley in North Dean. One service is to provide new residents with a Welcome Pack of village information, so if you know of anyone new to the area please call: Pat Richardson (Speen) 01494 488627 or Judith Broadley (North Dean) 01494 563178 cooljude@btopenworld.com

Village News

If you are not already signed up to The Village Messenger and The Village Diary, do email Village@SpeenBucks.org or jh@jwhh.co.uk to be put on the mailing lists, with the word 'include' in the subject line - they will keep you up to date via email on a monthly basis with all the latest village news and dates for your diary.

EDITOR: Jacqui Laing • ADVERTISING: Tom Dent

COMMITTEE: Gloria Holmes (Chair), Megan Chinn, Nick Wheeler-Robinson, Julie White

DESIGN & PRODUCTION: Jacqui Laing • PRINTED BY: PK Inprint Ltd (01494 452266)

Award winning Design

Extension • Conversion • New Build

SQU4RE



Jeremy Symondson
Foursquare Land Limited
Old Smithy, Great Hampden,
Buckinghamshire HP16 9RF
jem@4squareland.co.uk
tel: 01494 488877
mob: 07789 201616



SPEEN STORES

Your useful little shop

Freshly baked bread daily
Sub-Post Office
Fresh Fruit & Vegetables
Free Range Eggs
Homemade Cakes
Handmade Greetings Cards

Please visit the village website
www.speenbucks.org.uk
for opening hours and more information

Did you know eating better quality red meat less often
is better for you and the environment?

Eat Better, Buy Local

Delicious pork and seasonal lamb
grown in your village

Adrian and Charlotte Downing

Flowers Bottom Lane
Speen • Bucks • HP27 0PZ

t: 01494 488078

e: thepantry@darvillshillfarm.co.uk



**Darvills
Hill
Farm**

WHAT'S ON

in Speen & North Dean

MAY

2nd May	SHH Spring Lunch	Horse Trust (SOLD OUT)	Grainne Suter 488540
2nd May	WI - Resolutions	Speen Village Hall 7.45pm	Jenny Pearce 562333
3rd May	Speen School Open Day	Speen School 10.45am	Jacquie Coles 488321
9th May	Speen School Open Day	Speen School 1.15pm	Jacquie Coles 488321
16th May	Speen vs North Dean Golf	Harleyford Golf Club 8.30am	Jo Allan 489838
17th May	Captain Hook's Bar	Speen Village Hall 8pm	Cat Cook 48899
27th May	Garden Group Visit	Homelands, Ellesborough 1.30pm	Catherine Butler 488412
27th May	Speen vs North Dean Cricket	Bledlow Cricket Club	Jeremy Mudie

JUNE

6th June	WI - Your Wardrobe	Speen Village Hall 7.45pm	Jenny Pearce 562333
7th June	SHH Race Night & BBQ	North Dean Village Hall	Grainne Suter 488540
20th June	Garden Group Visit	Manor House, Stevington 12.15pm	Marion Grimsdale 488722
21st June	Midsummer Shindig	Speen Marquee 6pm	Helen Davies 488847
22nd June	Speen Fun Day	Speen Playing Field 1.30pm	Matt Davies 488847
28th June	Captain Hook's Bar	Speen Village Hall 8pm	Cat Cook 488939
29th June	Rock the Hill in North Dean	North Dean	Alison Kent 07887 963450

JULY

13th July	Speen Pirate Fete	Speen Playing Field 2pm	Lesley Thorn Davies 488851
-----------	-------------------	-------------------------	----------------------------

AUGUST

17th August	North Dean Village Fete	North Dean Playing Field	Alison Kent 7887 963450s
-------------	-------------------------	--------------------------	--------------------------

SEPTEMBER

1st-15th Sept	Speen Festival	Around the village	Cat Cook 488939
---------------	----------------	--------------------	-----------------

NOVEMBER

2nd November	Speen Bonfire Night	Speen Playing Field	Clare Morris 488553
16th November	SHH Christmas Market	Speen Chapel	Grainne Suter 488540

List of Advertisers

A Cut Above, Alchemille Garden Design, Ashridge Home Care, Aston Hearing, Beechdean Farmhouse Dairy Ice Cream, Beauty by Georgi, Buckmoorend Farm Shop and Kitchen, CG Tree & Garden Services, Coles & Blackwell, Darvills Hill Farm, Foursquare Land, Fraser Morgan School of Dancing, Hamptons, Heppelthwaites, Hypnos Beds, Independent Living Consultants, JNP, John Bishop Garden Machinery, KJ Windows and Doors, Lloyd's Wines, Martin Holman's Pest Control and Services, MiHomecare, MR Collins, MWH Interiors Limited, Nick Higgins Forestry and Fencing, Nicki Thomas Web Design, Oven Loving, the Painted Kitchen Company, Paul Newman Ltd, PKInPrint, Rowena's Therapies, Rowlandscapes, SB Decorations, Speen Pilates, Speen Stores, Speen Vehicle Body Repairs, Springline Cars, The Smart Garden Company, Tudor Travel, Universal Care, Village Environmental Services.

SPEEN C of E INFANT SCHOOL & PTA

Helen Davies, PTA Co-Chair

It's been a busy term at Speen School, for both pupils and staff, starting by welcoming our 2 new pupils into Year N. Belle and Eosa settled in very quickly and are enjoying life at Speen school.

The end of January gave us the first dump of snow, the school opened due to the hard work of our caretaker Karen Woodward and the children were able to build amazing snowmen and igloos. However, the weather got the better of us and on February 1st the school was closed – "Snow Day". There wasn't much space on the Speen Sledging field that day!

The first of this term's Theme weeks started on February 5th, the weeks topic was Animals. The children had an amazing day visiting Whipsnade Zoo to see the different classification of animals.

The following day they were clay modelling the animals they had seen. The week culminated with a visit from Kwawme, an African dancer and storyteller. The second of the Theme weeks was held on March 11th, celebrating Florence Nightingale and Mary Seacole. The children learnt about the life of these 2 wonderful ladies, they were taught first aid, made food that would have been served to the convalescing soldiers and many art activities. The children love the theme weeks and get so much out of them. The parents and pupils really do appreciate all the hard work of the staff in creating these fabulous weeks.

Speen school celebrated World book day on February 26th. All children came to school dressed as a character from their favourite book and had to prepare a short speech about their chosen book. The school was lucky to

have Usbourne Book fair that afternoon at school, with a percentage of proceeds going to the school.

It has been a very active term, for the Key Stage 1 children, who have participated in 2 inter-school sports tournaments. In February the children took part in a Basketball tournament at Risborough Upper School and in March we welcomed several local schools to Speen Playing Fields to compete in the annual cross-country race. Many thanks to the PTA who supplied all the spectators with cakes and refreshments.

The biggest news for the school this term has been the launch of Little Apples Pre-school. This has been a bittersweet process, it is sad to see the closure of Speen Pre-school in the village hall but great that Speen school has been able to expand and open Little

Apples. It is wonderful to have the support of the community with this new venture. We are very excited to welcome our new Pre-school leader Janice Beard who will join the team after Easter. Little Apples will be open 9am – 3pm every day, and spaces are available. If you would like any information, please contact Mrs Moore 01494 488321

Looking forward there will be an Easter Egg Hunt held at the school on Friday 5th April. This is open to all and will take the form of a treasure hunt with an 'eggsellent' prize for all taking part. For our summer event this year we are joining forces again with the playing fields and will be hosting a family barn dance on Friday 21st June. Please look out for posters and e mails regarding tickets nearer the date.



Safari Supper 2019

Co-ordinated by Speen School PTA, this year's gastronomic perambulation around the village was as rollicking as ever, with a collection of 10 local host houses generously providing feasts to a record-breaking 93 guests. Actually 93 and a half if you include 3 month old baby Herbie who proved himself to be the perfect dinner companion (we start 'em young in Speen!).

After enjoying menus ranging from Thai-inspired BBQ street food skewers to Moroccan lamb tagine and Spanish paella, everyone ended up back at school for pudding, a bar and dancing til the early hours. Thanks as always to our wonderful hosts for opening their homes and cooking up a storm, and to the good folk of Speen for continuing to support our lovely village school.

Naomi Rogers, on behalf of Speen School PTA

TIDDLER&TODDLER PLAYGROUP

Natasha Kann, Group Leader

The playgroup has a fantastic buzz and busy atmosphere at the moment, with all the children enjoying being together and interacting well with one another. We are also really pleased to have welcomed 3 new families to the group since the start of term, with the group now averaging 12-14 children each week.



us and having a helping hand every week makes such a difference to the smooth running and atmosphere of the playgroup.

Already this term, the children have been enjoying making bird feeders for the garden, caterpillar twigs, sparkly fridge butterfly magnets and have also been planting sunflower seeds and cress seeds! We are now looking forward to Mother's

Day, with lots of craft activities to do for all the lovely mummies! As well as our Easter party, which will be on our last session this term, Tuesday 2nd April.

Spenn Tiddler and Toddler playgroup is the perfect place for families in the local area and beyond to enjoy some time meeting new people or for spending time with friends, while the children enjoy the toys, craft and playing together.

We are especially lucky to have 4 wonderful ladies who help with setting up the room, making cups of tea for the mummies and packing away at the end of each session. So thank you for everything you do for us, Jenny, Alison, Janis and Sandy. We really appreciate the time you give up for

us and having a helping hand every week makes such a difference to the smooth running and atmosphere of the playgroup.

We welcome any new families with Tiddlers or Toddlers who would like to join us. We meet every Tuesday morning in the Spenn Chapel Hall, 9:30-11:30 during term time at a small cost of £2 per family. There is always lots of fun to be had enjoying the toys, jigsaws, play dough, messy play, craft activities as well as singing and story time. Grown ups can enjoy a cup of tea or coffee and a chat with other local families while the children enjoy some healthy snacks.

If you'd like to know more, please get in touch at spennnorthdeantoddlers@gmail.com

GREAT BRITISH SPEEN CLEAN

John Holmes



Villagers of all ages joined forces along the lanes and byeways, collecting a huge pile of litter including many wine bottles, cans, fast food packs and even an old pushchair.

Everyone was rewarded afterwards by tea and delicious cakes, kindly provided by members of Spenn WI.

Many thanks to all who took part in this great community effort to help to improve the environment.

SAVE THE DATE
Midsummer Shindig – 21 June
The night before Fun Day

 Live Band with caller	 Fun for All the Family
 Hog Roast	 Bar & Ice Cream
Spenn Playing Fields From 6pm	Early Bird Tickets on Sale in April



Raising Funds for Your Community
Spenn Playing Fields & Spenn School

ASTON HEARING

01494 733840

Amersham

01844 396057

Thame



Look out for our **Hear Today Events**

Monthly Drop-in Coffee Mornings
1st Tuesday & 1st Friday of every month
in Thame and Amersham

Qualified advice - Personal experiences

Talks - Refreshments

Support for all hearing concerns

see www.astonhearing.co.uk for details or call

01494 733840 to register your interest

and we will keep you informed.

All welcome

Free of charge



European
audiologist
of the **year**
2016

***Services available
in Amersham
& Thame***

Hearing Consultations

Latest Hearing Technology

***Ear Wax Removal
using Micro-suction***

***Children's
Hearing Screening***

Ear Protection & Advice

www.astonhearing.co.uk



SPEEN CHURCH

James Entwisle

We are currently in a period of Interregnum following the retirement last October of Reverend Heather McIntyre, who had been with us for four years. Heather laid strong spiritual and practical foundations for Speen Church, having led the team responsible for the restoration of the Church buildings and the equipping of the new hall. Alongside building strong connections with Speen School and Pre-school, Heather's ministry will also be remembered for the development of the Church's strong 'welcome' culture which we are keen to grow. We are now beginning our search for a new Minister, which we anticipate will take much of 2019. In the meantime, we are using the opportunity presented to welcome a host of visiting ministers and speakers to preach God's Word, while some of our own congregation are also taking turns to preach, which can be daunting but also deeply rewarding.

Over the Christmas period we estimate that we welcomed over 400 people to our various services, notably the Christmas Eve Carol service which is an important and traditional village event. This year the congregation gave £400 which was donated to the Wycombe Homeless Connection.

As many of you know, the Church actively supports several charities and this work continues apace. Overseas they are Agape Alive In India, based in Hyderabad, Southern India, and LIFT in South Gondar, Ethiopia. Agape fund a church centred school that provides education to some 350 children alongside a number of other social projects for people who come from the margins of Indian society (www.agapealiveinindia.org.uk). LIFT provides kindergarten/first school level education to younger children and business creation/financial support programs to the impoverished, including widows and orphans of the Aids crisis in a remote part of Northern Ethiopia. The charity is led by North Dean alumnus and member of Speen Church, Moira McLure who responded to a calling from God to work in Ethiopia some 10 years ago and has lived there ever since. (www.lifeinfulltrust.org). At present, we have a special initiative to help Moira buy a new 4x4 to replace her ageing vehicle and cope with the harsh terrain. Known as 'Wheels for Moira', you can find out more by visiting www.justgiving.com/campaign/wheels4moira. Any donation would be graciously received.

Closer to home, the Church provides financial and volunteering support to Wycombe Homeless Connection, which started as a winter night shelter and has expanded into



addressing the broader needs of the homeless (www.wyhoc.org.uk) and also One Can Trust, the main food bank in High Wycombe (www.onecantrust.org.uk).

The profits from the Chapel Hill Kitchen café, after a contribution to chapel overheads, is divided between these four charities, amounting to approximately £8,000 per annum. The café itself continues to thrive thanks to the hard work of Kate Vale and her team of volunteers and, of course, the fantastic support received from the villagers. We hope that the café gives meaning to our vision statement - *Speen Church, a Place Where Community Meets*. We strive to be an active Church, not one that simply opens its doors on Sunday morning and the cafe.



To this end we have:

- 'Open Door' on Saturday mornings which is a time for anyone to visit the church and pray or request prayer.
- On Tuesday's we host a "tiddlers and toddlers" group for 0-3's and their parents/carers.
- Wednesday sees 'Time Out' when women meet to study scripture, discuss wider issues and share a time of fellowship.

We have an active network of Home groups that meet throughout the week to explore faith, pray for one another and worship together. The hall is available for rent for appropriate community events too.

On a sad note, it is important to mark the passing of two members of Speen Church this year, namely Muriel Groves, known to so many in the village as 'Topsy', and Doris Redrup. It is hard for most of us to contemplate the amount of change and upheaval Topsy and Doris witnessed in their long lives, but throughout their faith remained the one constant. We continue to hold the families in our prayers.

As this edition of the SNDN goes to print, we will be looking forward to Easter. To mark the most important date in the Christian Calendar we have a series of events scheduled:

April 18th - Maundy Thursday - Church supper with readings

April 19th - Good Friday walk - Princes Risborough "Walk of Witness"

April 21st - Sunday service

More details on our Easter schedule, including timings, will be posted shortly on the Church website: www.speenchurch.org. It would be wonderful to welcome you to the Church to celebrate Easter or indeed at any time.

Alastair Blundell



TUDOR TRAVEL

Taking you there in style



**Providing luxury transport
for the local area**

Five and eight seat MPVs

22-34 seater midi-coaches

Group trips, corporate events, days out

Local and long distance

Fully insured and licenced

Private & business accounts welcome



01494 488887 / 07771 881245

info@tudortravel.co.uk

www.tudortravel.co.uk

NORTH DEAN NEWS FROM THE VALLEY

Alison Holmes



It's been another busy, sociable few months. We had a fabulous Italian wine tasting evening with platters made up from Chiltern Charcuterie - a great pairing for an evening of education and fun. Thanks to Gerry and Karen Mudie for arranging and fundraising.

We then had a well supported and festive evening of carols and mulled wine – gosh that seems a long while ago, especially as the forsythia and daffodils are currently signalling the arrival of spring! But as normal it was a splendid evening where the village elders meet the youngsters and take the roof of the hall in unison.

The next event was a very well attended simple Friday night of Fish and Chips in the Hall. We brought our own tipples and collected 43 excellent portions of Cod and Chips from Prestwood. The aroma of vinegar filled the hall for yet another village event.

Dates for the Diary

Wednesday 17th April 2019 - North Dean AGM

(whoop whoop!)

The one you have all been waiting for! The obligatory Annual General Meeting where we explain what we have been doing and justify our existence as a committee. Come and join us. HAVE YOUR SAY as to what and how the village hall should be run.

Monday 27th May 2019 - Cricket Match Challenge

We are now planning the Village Cricket match; Speen vs North Dean. It was such a quintessential English event last time, so I ask you all to don your summer attire and bring picnics to support the teams. Call Jeremy Mudie for more information - it will be the last Bank Holiday Monday in May.

Saturday 29th June 2019 – Rock The Hill

Due to popular demand the return of ROCK THE HILL is upon us - I think you will remember that we sold out very quickly last year, and due to the legalities of insurance and Health and Safety we have to adhere strictly to numbers – SO GET IN QUICK!

Saturday August 17th – The Fete worse than death!!!

We have got no further than setting the date for our annual extravaganza. So save the date. Arrange your holidays around it! And sign up to help. We look forward to seeing our wonderful Piggots band and lots more.

The Village Hall

The Village Hall is being updated. A huge thank you is expressed on behalf of the whole village to Joe Lockett who has spent hours updating the issues needed to preserve the hall. He has done some beautiful brickwork around the old entrance porch to stabilise the legs, replaced window frames that were rotten, finished stripping the ivy off the building and has laid a path to the garage store room. To me, Joe represents a fabulous VILLAGE PERSON who is willing and happy to give his time (and talent) to the Village selflessly. A very valued village friend - thank you Joe.

We have also had new cupboards put into the entrance hall where we can now keep all the chairs tidily and we are just about to install a new cooker and hob. We are still looking for a cleaner for 2 hours a week so please let me know if you are interested (it's a paid role).

Whilst most of our committee for the village hall are working, in our 'spare time' we try to create a community within the village through the use of the hall. We understand the busy lives and lack of quality time spent at home but when we have our little functions you realise how lovely our little hamlet is and what village life can be. It is great when new people arrive in the village and when new people join in our events. We welcome new ideas and suggestions and would love some young blood on the committee. Why don't you come and see us?

I wish you all a happy summer and look forward to seeing you at our events.

Alison Kent

VILLAGE ENVIRONMENTAL SERVICES

DOMESTIC DRAIN SERVICES

Poppleton, Doncaster
Est. 1979

BLOCKED DRAINS?

FAMILY RUN BUSINESS SINCE 1979
BLOCKED DRAINS CLEARED

REASONABLE RATES

CCTV DRAIN SURVEYS

NO EXTRA CHARGE FOR EVENING, WEEKEND OR BANK HOLIDAY CALLOUTS

FULL PUBLIC LIABILITY INSURANCE

CALL US DAY OR NIGHT

**24/7
CALLOUT
SERVICE**

07850 635 844 01296 624 221 (MESSAGES)



mwh

design • refurbishment • construction



- Interior building work and alterations
- Bathroom design and installation
- Kitchen design and installation
- Full property renovations
- All work covered by comprehensive insurance and full guarantee

t: 01869 278885
m: 07866 738829

mwh | interiors

www.mwhinteriors.co.uk • info@mwhinteriors.co.uk

KING WILLIAM IV UPDATE

Peter Symonds

A thriving pub should be a genuine asset to Speen, the focus of our community life and central to our main village events. Most people who move to Speen check out the school, village shop & Post Office and the pub. Indeed, it is noticeable that since the pub has been closed for the last 3 years, we do not get to meet as many of our new neighbours as we used to. All our excellent village activities were born in the pub; The Festival, Fun Day, Fete and Bonfire Night to name but a few. Most of our friendships with our neighbours were forged in the pub and there is no doubt that having a pub enhances the value of our houses and makes them that much more marketable.

We have conducted detailed research with comprehensive assessments of pub valuations, numerous consultations with pub managers, management companies and brewers. We have met with communities who already own their pub, and this has resulted in the compilation of a series of informed and credible business models. This work leads us to the conclusion that the pub is eminently viable, and we look forward to the day when it reopens its doors and again becomes the hub of village life.

Thank you to those villagers who have expressed an interest via our website. The reaction so far has been very supportive with over 50% of the village registering an interest. It is essential for as many people as possible to show their support and that we have as many investors from across the community as we can. We are now organising individual, private and confidential meetings, to establish the appetite for community ownership and



to see what funds we can raise. We would like to talk to you about our plans and listen to your thoughts and ideas.

Everyone will be able to participate as we plan to establish a "Friends of the KW4 Group" open to all villagers to

join, irrespective of whether they are investors or not. The Chair of this group will have a seat on the Board, to voice what the village wants from their community pub. Any initial profits would be reinvested in the business to fund repairs, maintenance and working capital and hopefully, in time, we will be able to repay investors, but we also want to give back to our community by supporting our village charities, as selected by "The Friends" group. This village has plenty of ideas, enthusiasm and energy but we cannot put any of these into practice until we own the pub.

Please do contact us via our website and to arrange a discussion and to give us your views and ideas. We promise you the softest sell you will ever encounter and total confidentiality. Whether you can invest or help in other ways please get in touch and register at www.savethekingwilliam.org or if you prefer leave your details at the shop and we will be in contact with you.

Every community needs a place for people to gather, to meet new and old friends, and share stories of everyday life. We would like our pub back, so please get in touch and let's see if we can raise the money to buy, repair and re-open the King William!

KW4 Rescue Group
www.savethekingwilliam.org

BROWNIES & GUIDES

Pauline Hall, County International Advisor



Become a Role Model • Be Inspiring • Be You



1st Hughenden Valley Guides and Brownies both meet in Speen and have thriving busy groups of girls, keen to learn new skills, make new friends and have lots of fun and adventure and space to develop their potential.

Both units need more adult help to run their weekly meetings and to keep them open so that the girls can continue to enjoy being members of Girlguiding.

Becoming a leader is easy: check out girlguiding.org.uk. There is lots of support and training available and you will learn some skills for yourself too.

Please contact me for more information: fireflyrangers@gmail.com

www.speenbucks.org.uk

PAUL'S PLUMBING

FOR ALL YOUR LOCAL PLUMBING AND ELECTRICAL REQUIREMENTS

07786 175123

Reliable, friendly service

Based in Upper North Dean

PLUMBING & ELECTRICAL SERVICES

**Taps • leaks • drains • loos
central heating & controls
bathrooms • kitchens
water softeners • water tanks,
Emergency spares and repairs**

Local to Naphill, Walters Ash, Lacey Green, Speen,
Hampden, Hughenden & North Dean

Paul Newman Ltd

01494 565573

Registered for electrics
and self certification



SPEENHELPING HOSPICES

Grainne Suter

Fundraising events for 2019 were launched with a Quiz Night in the village hall on the 15th March. Quiz master extraordinaire Tom Dent set the questions again this year and we had a packed house. It was a very good night, with lots of fun and head scratching, and we raised over £800 for the four hospices.

As you know, we fundraise for Florence Nightingale, Rennie Grove, South Bucks Hospice and Helen House, the hospice for children in Oxford. The hospices receive limited funds and are increasingly reliant on local support from communities like ours to continue to provide the specialist care of inpatient and day hospice services.



To date the village has raised over £75,000 and our help is now needed more than ever. In January we were able to give each hospice a cheque for £2,000. We have planned a range of fundraising events for 2019 and with your help would like to increase our donation to each charity at the end of the year. With your continued support we can raise more money for hospice care.

We look forward to seeing you at the events!

Dates for Your Diary

2nd May

Ladies Who Lunch!

The annual Spring Lunch at the Horse Trust

7th June

Race Night and BBQ in North Dean Village Hall

31st August

Retro Night

Step back some decades and join us for cocktails, bingo, retro food and a glitterball disco! This will be one of the first events of Speen Festival 2019

9th October

Bridge and afternoon tea

16th November

Christmas Market at the Chapel

December

Door to door Carol Singing, the dates to be arranged.
Singers welcome!

SPEENVILLAGE HALL

Bill Groves, Chairman Speen Village Hall Management Committee

After some 60 years of Nursery School, Play School and finally Pre-School we will be saying goodbye to the youngsters at the end of this term. This will leave a tremendous hole in our rental income and we are urgently exploring ways of filling this shortfall.


Various ideas have been considered including Table Tennis, Line Dancing, Keep Fit and Singing. If you have an interest in these suggestions please let us know.

The Village Hall is a welcoming place and offers a discount to Villagers and Village Organisations, so please call our booking secretary Sue Taylor on 488500 if you would like to make a booking.

Future events include a Film & Food Night on Friday 25th October and our Christmas Fayre on Saturday 7th December.

We are planning to have the interior of the Hall redecorated so it will be bright and fresh for all of the new bookings! We look forward to greeting you soon.





20% of our sales
happen behind
closed doors*

Over 100,000 buyers and tenants search for their new home through Hamptons International every year – many are offered properties that will never be advertised on the open market or online.

So whether you are a property owner wishing to take a low key approach to marketing or a buyer or tenant wanting to ensure you don't miss out on the perfect property it's vital that you speak to Hamptons International. We can tell you about all the properties we have on the market – not just those you can see online.

Hamptons Great Missenden

Sales 01494 863 134 | Lettings 01494 355 029 | greatmissenden@hamptons-int.com
hamptons.co.uk



• Over 20 years experience

• All interiors and exteriors

• All wall coverings

• Free quotations

SB Professional
Painting & Decorating
Call Ben On:
07973 539495 or 01296 486470

References from completed work are available from Speen and surrounding areas

NORTH DEAN SUNDAY LUNCH

Alison Holmes

As you may be aware we try and do this event annually due to its amazing support and popularity.

This year saw a group of new chefs take over and what a brilliant job they did. Led from the front by super-cook, Melinda Pooley, her team of Karen Mudie and Geraldine Lockett dished up the best roast pork lunch with all the trimmings.

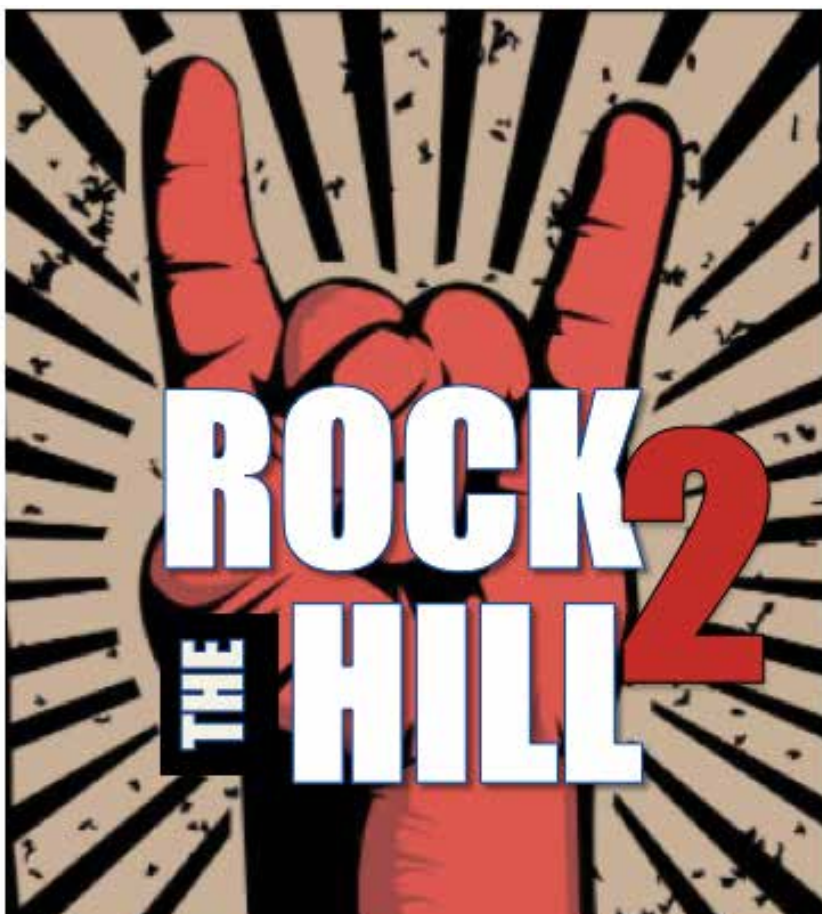


Karen Mudie, Melinda Pooley and Geraldine Lockett

With over 40 people sitting down to eat, banter and drink, the lunch rolled on into the afternoon and a fabulous time was had by all.

The chefs' husbands were the servers, donning aprons and waving carving knives. The portions were huge and we all had the best fun. Well done Ladies (and Gentlemen)!

Remember you don't have to live in the village to enjoy our events. It is always a pleasure to host our neighbours from Speen.



**BACK BY
POPULAR
DEMAND
29TH
JUNE
2019
SAVE
THE DATE**



SPEEN VEHICLE BODY REPAIRS

Over 25 years of experience
of working to a high quality

- Classic car restoration
- Accident repairs
- Resprays
- Small repairs
- Horse-box trailers
- Motorcycles

Call Robin **07716 414633**

speenvehiclerepairs@gmail.com

BEECHWOOD FARM
HAMPDEN ROAD • SPEEN HP27 0RT

Oven Loving

BEST
NEW BUSINESS
2017
August 2017

"Your oven
cleaning
specialists"

"Booking online was
so easy"
Exceeded my
expectations, my
oven looks amazing.
Tina Kemp

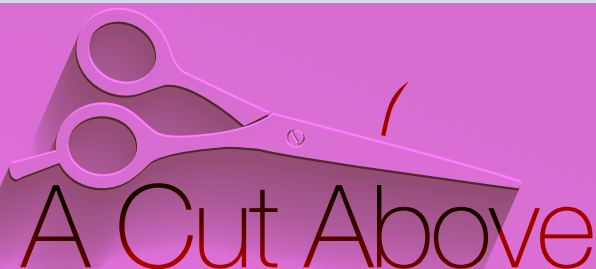
"I always look
forward to getting
my oven cleaned"
Tidy, respectful
team, professional
service. *Lee Neal*

Call
today

Book
online!

01296 320340 | ovenloving.co.uk

sayhello@ovenloving.co.uk | facebook.com/ovenloving



Have you discovered
your local salon yet?

A Cut Above is situated in the heart of Speen village
with easy parking. A unisex salon with a warm family
friendly atmosphere.

Chris Stiles and Cathy Wardle are experienced
professionals providing cuts, colour, styling and hair
care advice at an affordable prices.

For appointments: **Salon 01494 488 899**

Chris 07789 115 942 | Cathy 07753 858 611

A Cut Above, Over Speen Stores, Chapel Hill, Speen, HP27 0SL

We hope to see you soon!

MEAT THAT'S GOOD TO EAT

Buckmoorend
farm shop & kitchen



HOME REARED MEATS



LOCAL PRODUCE



KITCHEN OPEN AT WEEKENDS

Chequers Estate, Missenden Road
Butlers Cross HP17 0UT

SHOP: Wed-Fri 10-6 Sat/Sun 10-4

www.buckmoorendfarmshop.co.uk

CALL US: 01296 622 472



SPEEN FETE



SAVE THE DATE

SATURDAY 13TH JULY

2
PM

SPEEN PLAYING FIELDS

LIVE PIRATE BATTLE

WALK THE PLANK



ONE LEGGED PIRATE RACE

TREASURE HUNT

DECORATE THE VILLAGE PIRATE-STYLE

AND MUCH MORE ...

Our main beneficiary this year will be Speen Playing Fields,
who are raising money towards the
refurbishment of the toilets in the Pavilion.



A Sneak Peek at the Programme for 2019 so far ...

Peter Pan Community Show
Comedy Night
Dog Show
Words & Music
Yoga Sessions
Ukulele Workshops
Questions Worth Asking
Jazz Night
Dance Classes
Wildlife Photography

Want to be part of it?

Selling Ice Cream
Parking Cars
Moving chairs
Behind the Bar
Taking Photographs
Putting up posters
Event First Aider

Please get in touch!

for your CV, your DofE or just for fun
volunteer@speenfestival.org



SPEENFESTIVAL presents PETER Pan

Help Required

Cast auditions have been taking place over the last couple of weeks,
but we also have vacancies for the following roles:

- Supervision of children during rehearsals and production week •
- Costumes • Make-up • Technical support (sound/lighting) •
- Stage management • Logistics • Set creation •

Any offers of help would be very gratefully received.

Please contact Charlotte Downing - Producer admin@speenfestival.org

Rehearsal times can be found on the Festival website www.speenfestival.org

SPEENFESTIVAL2019

31st August - 15th September

Since I last wrote towards the end of 2018, plans for Speen Festival have progressed well. We have a Festival show in the early stages of preparation - the Peter Pan auditions have generated some fabulous talent, and we have a main sponsor - thank you **Aston Hearing**, and we have a programme that is getting increasingly packed. You definitely don't want to be on holiday for the first two weeks of September.

Our two weeks of Festival fun celebrates the arts and creativity in the Chilterns in the very widest sense, through music, dance, art, comedy, photography and celebrates our beautiful surroundings with outdoor activities generating an eclectic mix of events, and yes the dog show will be back!

The events are all created and delivered by you, for you; local passions, skills, talents and have-a-go spirit that never fails to impress. No matter how small you think your contribution might seem, it is all part of what makes the Festival such a highlight in the community calendar.

One eloquent piece of audience feedback from 2017 stated:

“It is an excellent event which provides a forum for our exceptional local talent. It brings the community together; organisers, volunteers and attendees day after day gather together in the various venues to participate in a broad range of events. Every festival I am in awe of the talent in our midst and the generosity of the organisers and volunteers who donate their time.”

Another comment valuing:

“... the community coming together to create something wonderful that gives so many people an opportunity to shine.”

Whether you are able to shine with car parking duties for one evening, sell ice cream or want to put on an evening of performance poetry - your contribution makes this a very special community event.

I look forward to meeting you at our monthly community pop up pub nights at Captain Hook's Bar and to making it all happen in 2019.

Cat Cook
Festival Coordinator

Captain Hook's Bar

8pm-11pm

AT THE
VILLAGE
HALL

26TH APRIL

17TH MAY

28TH JUNE

19TH JULY

WRAP PARTY 4TH OCTOBER

ASTON
HEARING

30 years
now that's a lot of ears

FAMILY HEARING CARE SINCE 1989

Aston Hearing are delighted to sponsor Speen Festival 2019

This will be our 3rd year of sponsorship and each year we are blown away by this incredible two-week event. We are particularly excited as 2019 is our 30th Anniversary and as a result Speen Festival will sit right in the middle of our celebratory year.

Speen Festival is such a celebration of local talent and community, we genuinely cannot think of a better way of honouring our 30 years of business in the heart of the beautiful Chiltern Hills. We will, over the next few months, be working closely with Cat Cook and the organising committee to see how we can best support the festival and this will include plans for an exciting family fun-day and a celebratory evening event on Sunday 8th September - we hope many of you will be able to join us. We will keep our Facebook page and website updated with plans as they develop.

WEDDING INVITATIONS

PLACE CARDS

DATA MERGED LETTERS

MEMBERSHIP CARDS

NOTEPAPER

NEWSLETTERS

XMAS CARDS

INVITATIONS

NOTELETS

FIXTURE CARDS

TAGS POSTERS

POSTCARDS

ORDER OF SERVICE CARDS

PK
INPRINT

gpex
MORE THAN JUST PRINT

DESIGN; ARTWORK; LITHO, DIGITAL & WIDE FORMAT PRINT

Pinstone Way, Tatling End, Gerrards Cross, Bucks SL9 7BJ

T: 01494 452266 • E: mail@pkinprint.co.uk

W: www.gpex.co.uk

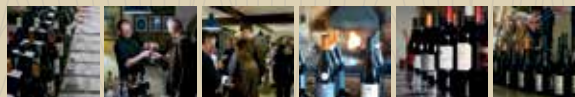
Printers of Speen & North Dean News

CONTACT US NEXT TIME YOU NEED A PRINT QUOTATION
doing more with print

Lloyds Wines



- Local supplier of high quality, rare and affordable wines from France, Italy, Spain and Portugal
- Free delivery
- All events catered for
- Supplier to The Hampden Arms and The Gate
- Sole UK importer for many regional wines never seen before in the UK
- 20 years experience sourcing from the best small growers
- Wine and Spirit Education Trust qualified
- Authorised wholesaler
- Personal and premise licensed



lloydswines.com sales@lloydswines.com 07547 645917

THE PAINTED KITCHEN COMPANY



PK
PAINTED KITCHENS.ORG

A: 5-7 DUKE STREET, PRINCES RISBOROUGH, BUCKS HP27 0AT
M: 07768 975 323 • T: 01844 346444 • W: PAINTED KITCHENS.ORG

BEECHDEAN DOWN ON THE FARM

Gill Kent

Unlike the Welsh farmers who rely on exporting their Welsh lamb to France, we do not expect much to change in our business, whatever the outcome of Brexit. We do however expect to be subjected to further regulations to try and combat global warming.

The agricultural industry contributes about 10% of the total greenhouse gas emissions from the UK, mainly as methane, nitrous oxide and carbon dioxide.

Methane from livestock accounts for 57% of all agricultural emissions. It is 'burped up' by ruminant animals during food digestion. Researchers are at present looking at ways of changing diets which could lower methane emissions. Methane is also produced by microbial activity in manure and slurry, (liquid manure)

Our cows produce big quantities of manure so we only need small quantities of fertiliser to make the grass grow.

Fertilisers are the emitters of nitrous oxide. Tractors are constantly in use for pulling a variety of farm implements and obviously produce carbon dioxide.

Mature permanent pastures with high humus contents are the best sites for capturing the carbon dioxide and in this respect our farming system can gain some 'brownie points'!! Historically we do not plough up our grassland as the steep hills and thin, flinty soils make it difficult to establish new grass. Forests capture carbon even more than permanent grassland.

It is difficult to see how we can improve our situation. Vegans would say 'get rid of the cows, we don't need meat or milk'. In that case there would be no grazing animals, and as on the Chilterns and other poor soil areas, the only alternative would be forestry. Do we really want south Bucks to become a large forest?



SPEEN&DEAN SKIERS

This year Keith Fisher organised the boys' trip to St Anton in Austria in January and Katherine Matthews and the girls went to Les Gets in France in March.



If your loved one does not want to go into a care home, there are other options.

Ashridge Home Care highlight the benefits of live-in-care.

Trudi Scrivener, owner of Ashridge Home Care is passionate about enabling people to stay in their own homes for as long as they wish. She asks families to consider alternate options for their loved ones by exploring the potential of live-in care as an alternative to moving into a residential care home.

According to a report published by Age UK, nearly 1.2 million older people don't receive the help they need with essential activities in later life, such as self-care, daily housework and leisure activities.

Live-in care is perfectly suited to individuals who want to remain in their own home, but who require the extra assistance or companionship of a professional carer.

Trudi Scrivener explains: "Unlike other care options, a live-in carer will stay with your relative and provide care and support to them whenever they need it. With live-in care, your loved one will experience one to one care in the comfort of their own home, from a fully qualified carer who is able to assist with everything from daily needs to companionship, personal care, cooking and other domestic housekeeping chores that need to be completed."

Ashridge Home Care



Ashridge Home Care believes that staying within the familiarity of our own homes is integral to our wellbeing. It's not just the comfort and convenience that are benefits, live-in care can also help to ensure your loved one's safety and personal wellbeing are being prioritised. Having a carer on hand can help reduce falls and it also means the client will have a companion so the person won't feel isolated and lonely.

Trudi continues, "By keeping your loved one at home with a carer you're allowing them to keep a sense of individuality, as well as retaining their current lifestyle and access to absolutely all of their belongs and treasured memories."

Live-in carers take a person-centred approach which can help your loved one retain their sense of dignity and independence, and even push them in the right direction to keep them happy and healthy. Individuals can build personal relationships with their live-in carer, helping to fight loneliness and ensuring that they get the best care available to them.

What is surprising to many people is that the price of live in care is compares favourably to that of a care home, it's especially cost effective for couples where the cost of residential care would be double.

To find out about the services that Ashridge Home Care offers or for an informal chat for care advice and options available, you can contact Trudi on:

01494 917344 | info@ashridgehomecare.co.uk

www.ashridgehomecare.co.uk

WILDLIFEWATCH

Peter Symonds

Winter 2019

The winter period has featured some dramatic falls of snow but also some remarkably warm weather during February, all of which significantly affects the behaviour of our wildlife. The cold spells always drive more birds into our gardens. On 17th of December I recorded 27 different species in or over the garden. This included winter visitors such as 4 Siskins and a Grey Wagtail visiting the pond, numerous Redwings and a few Fieldfares stripping berries off the Cotoneaster as well as a Starling which is a rarity for us. Ros Darnton reported Redwings and also a pair of Pied Wagtails in her garden, whilst George Butler had 18 Goldfinches and his first Siskin of the year, back in October. Jeremy Symondson reported both Siskins and a Blackcap at his feeders at the end of January. Meanwhile numerous Crossbills and a few Brambling were recorded in Great Hampden in November and January. Slightly further away more exotic visitors were three Scandinavian Waxwings that were found on the northern outskirts of High Wycombe for a few days in February.

One local bird that has attracted interest is a Red Kite, (nicknamed Stubby apparently) that is regularly sited over Cardiac Hill and Grubbins Lane. This unfortunate bird has lost all of its tail feathers and now resembles a 6ft bat. Despite the loss of its entire tail many months ago the bird still appears to manoeuvre quite satisfactorily and still seems otherwise healthy. I believe that I may have seen the incident that caused the damage when a kite passed over part of College Plantation where I believe the Tawny owls nest. An owl rose from the wood as the Kite passed over and grabbed the larger birds tail feathers. With a screech the Kite got free but left most of its tail in the owls talons in the process. There was also an incident involving a Tawny owl after bonfire night in November. An owl ventured down the Abbotswood chimney of Jim and Denise Barton emerging into the lounge in a dishevelled state. The bird was taken to Tiggywinkles to be checked over and recuperate before being released back in Speen a couple of weeks later.

Other interesting sightings include a Leucistic Blackbird in our garden on 10th February. This was a female with white patches over its head and shoulders. Ashley Cooper had 4-5 Redpolls on his feeders on 19th February and he also reported regular sightings of a pair of Ravens around Grubbins Lane and Highwood Bottom area. Alastair Blundell had reported one at the end of Abbotswood in December so they can in fact be seen or heard "bronking" anywhere around the village.

With the onset of warmer weather birds are now looking for nest sites or may already be incubating eggs. In our own garden up to 18 Mallard were turning up in early February to try to secure the best nest sight. One bird is now incubating eggs whilst a second female is still adding an egg a day to her clutch in our front garden, prior to incubation. Nuthatches are using a hole in the bough of an Ash above Coleheath Bottom track, behind our garden. They are now plastering mud around the hole to reduce the size of the aperture. Blue tits, Great Tits, Robins and Wrens are also nest building in the garden. A Moorhen has spent a couple of days on our garden pond but has yet to bring a partner to the site.



Picture by Jacqui Barre

Frogs have laid a small amount of spawn in College Plantation but none has appeared in the garden where the ducks have been taking a toll of the tadpoles for some years. Roe deer are still about in local woods but come under severe pressure during snowy periods when their dark winter camouflage coats cease to work for them. They can assemble into small groups at this time of year. Seven is the largest group I have seen on the outskirts of Speen. Muntjac are also about and a female with a fawn has been seen recently. They have an unusual constant seven month breeding cycle meaning that one can encounter tiny Muntjac fawns even in the coldest weather conditions.

Please let me know of any interesting sightings
psymonds590@gmail.com / 01494 488016



Beauty by Georgi

Local Beauty Therapist

Based in North Dean



CIBTAC and CIDESCO Qualified

Champaneys Trained

*Working from a fully equipped home salon
using industry-leading brands such as
Jessica Geleration, SNS, Sienna X, LVL Lashes & others*

For appointments please contact me on:

07775 504981

 @beautybygeorgi 



ROWLANDSCAPES

CREATIVE LANDSCAPE GARDENING

- Patios & paths • Brickwork • Planting & hedging
- Fencing • Driveways • Wildflower meadows
- Lawns • Garden maintenance • Tree surgery
- Woodland management • Agricultural fencing

Telephone: 01844 351919 **Mobile:** 07718 257104

Email: rowlandscapes@googlemail.com **Website:** www.rowlandscapes.com

Chair's Annual Report 2019

2018 was a momentous year for Speen Playing Fields in that at last the long proposed, discussed and planned upgrade of the play area finally took place. More later ...

Both the Playing Fields and Ridgley's Field are managed as a charity run by a voluntary team of trustees who caretake the two green spaces that not only provide recreational facilities but also a communal space for events that bring the village together. They are not council run or funded and as such this brings its own set of challenges. Raising funds, sourcing insurance, checking and maintaining equipment, upkeep of the pavilion, cleaning loos and emptying bins are amongst the many tasks that Playing Field Trustees continue to do.

It costs over £4000 to keep the playing fields grass cut, utilities running, and insurance paid. Over half of these funds come from the Playing Field Draw which Cristina Delgado and her team of collectors smoothly manage. Thank you not only to Cristina and the collectors but also to all the villagers who take part. I am very pleased to welcome Cristina to the committee. This year we are also grateful for a number of donations and grants from a variety of organisations including Lacey Green Parish Council, Princes Risborough Rotary Club, Speen Shop Charity Fund and Wycombe District Council.

The first field event of the summer was Fun Day, led by Matt Davies and his team of game inventors. Although primarily a fun day and village ice-breaker, funds were raised through donations, bar and BBQ.

End of June saw the Midnight in Marrakesh community ball, and again thanks to Matt for representing the playing fields on the organising committee and helping to secure our share of the £6000 raised. Our share funded the new rope swing seat. The benefit of moving the event from the school to the playing field not only resulted in a flat dance area but a broader audience for tickets.

The Wild West Village Fete took centre stage in July, complete with world cup tent. Thanks to all those that manned the bar and contributed towards the raffle prize.

The summer holidays are to be remembered for the installation of the much-awaited play equipment. It was very much a team effort, from John co-ordinating tree and hedge cutting, to Duncan and his digger, to Matt and Andy for the many hours spent laying safety matting. The new equipment - climbing cubes, slide centre and swing seat - are popular, offers something new and different to other playgrounds in the area and provides play facilities for a wider breadth of ages and capabilities. The equipment has settled in well, with increased light

due to the reduced tree and hedging in the area. Thanks to Gloria for organising the official launch complete with Speen Press coverage on a wet Autumn days

Bonfire night was a challenge - thanks to Duncan and his contacts for making it happen and for everyone who pulled together to complete the paperwork. Once everything was in place it was probably one of the best displays ever - great sized dino-bonfire designed again by Pete Symonds and built by the rest of the team, and fab fireworks from Keith Jones. Thanks to Andrew Price for organising the bar and all the other volunteers who manned gates and helped with food. We made an outstanding profit this year of over £2,200.

The closing event was the lighting of the Christmas tree which this year was co-ordinated by Tony and Speen Helping Hospices. There were carols led by The Laughtons, mulled wine and home-made mince pies. Around £80 was raised for this excellent cause. Speen Helping Hospices had used the field earlier in the year for a Car Boot sale which raised over £900. Partly as a result of this event, the guidelines for organisations and private individuals for using the Playing Fields were updated.

Thanks to all who co-ordinated the Christmas Tree Recycling service this year and those who helped on the day, raising about £350.

In the pavilion the electrics have been upgraded and a new cooker has been installed. Thanks to Mike Atherton and John for organising.

This year we will be turning our attention to the bike park and Ridgeley's Field. The closure of the Pre-school at Easter will result in the Forest School facilities no longer being required. The shed in Ridgeley's and what remains of the shed on the Playing Fields will also not be needed. We will also be considering a plan to improve the toilet facilities in the pavilion prior to this year's Festival.

Future Work Parties will take place in the afternoon and conclude with a family BBQ. A plan is needed to publicise this to ensure a greater turnout. First one in just six weeks.

Finally, I would like to thank all the trustees for the generosity of time and skills that you donate to support the Playing Fields. Special mention must go to Adrian Farley for his sterling work as treasurer. A warm welcome to Antonia Winson who will join the trustees as Secretary.

We now have a generic Speen Playing Fields email for anyone to report any issues affecting either the Playing Field or Ridgley's Field or to get in touch with a member of the committee, or to volunteer to help:

playingfields@speenbucks.org.uk

Speen Pilates

STRETCH • STRENGTHEN • CONTROL



Pilates is a progressive exercise method, ideal for all ages and abilities. It improves your posture, strength and flexibility, leading to a more efficient and toned body.

Pilates has gained wide recognition from the medical and sporting professions. It is widely used from those recovering from illness and injury to professional athletes aiming to improve performance.

★ ★ ★

Offering small classes for a maximum of 6 clients

Monday - 9.30am and 6.30pm

Tuesday - 9.30am and 6.30pm

Thursday - 9.30am

Friday - 9.30am

★ Now booking for January 2019 ★

★ ★ ★

The Studio at Midmede, Chapel Hill, Speen

Amanda 07733 307475

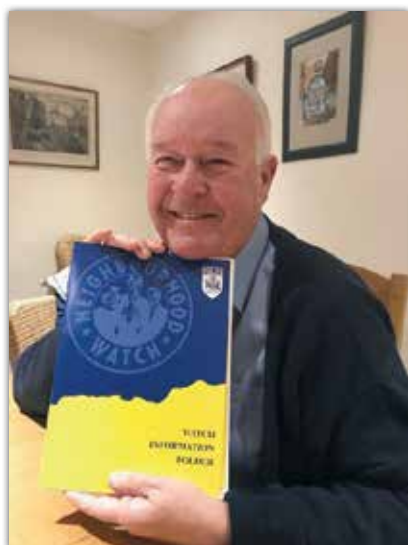
amandapilates@btinternet.com

www.speenpilates.co.uk



NORTH DEAN NEIGHBOURHOOD WATCH

Judith Broadley



North Dean is starting a neighbourhood watch group. The aim is to prevent crime and to prevent the opportunity to commit crime locally.

This involves the community coming together to achieve this goal by informing each other of any unusual occurrences, things out of the ordinary, and any concerns you have.

If you are interested in becoming involved, you will be asked to sign a consent form as part of the data protection laws. For more information please contact:

Judith Broadley:
07808 576152 email: cooljude@btopenworld.com

Peter Keen:
email: pkeen1944@sky.com

Charlotte Eyett-Burton:
email: charlotte.eyett-burton@hotmail.co.uk

SPEEN HERITAGE GROUP

Clive Rainbow

In 2007 the Speen Chapel bought a parcel of land at Pye Corner and acquired a very old apple tree that probably grew in what had been the garden of Pye Cottage. That tree attracted the attention of three men who had an interest in the conservation of rare fruit trees: Geoff Goodchild, who used to live in Speen; George Lewis, who was involved with Prestwood Nature Reserve and Derek Tolman, the proprietor of Bernwode Fruit Trees. In 2012, the Deacons of Speen Church gave permission for this team to take a core sample to establish the age of the tree and to climb quite high into it so as to take some cuttings in the hope that it might be propagated.

It was a rather dangerous climb (in 2017, when this photo was taken, the tree was about 50 feet tall) but Geoff Goodchild managed to obtain some viable cuttings, and - by counting the rings of the core sample - they established that the tree was then at least 96 years old. That sample was taken from a bough just reachable from the ground - so it did not come from the very oldest part of the tree - and it is known that, at a late stage, really old apple trees stop growing new rings. As you can see, the tree has not had an easy life but we can be confident that it is over 100 years old. It would have been growing in Speen when the 10 men recorded on our WW1 memorial were schoolboys.

The grafts thrived and several villagers have since obtained specimens from Derek Tolman. Sandy Mitcheson, on behalf of the Deacons, together with all the parties involved, agreed to name the fruit The Speen Chapel Apple. In the Bernwode catalogue it is described as: 'medium sized or a bit larger, pale green turning yellow when ripe and delicately streaked with broken scarlet. The apple is juicy, tender and melting, sweet and well flavoured. It can also be cooked and keeps its shape. It is ripe in early October and will store for a while.'

Last year, Kate Vale produced 24 bottles of apple juice from the fruits of the tree. A few bottles are still available at the Chapel Hill Kitchen and there you can also taste Kate's absolutely delicious Speen Chapel Apple cake but be quick.



Heppelthwaite

The Red Van Plumbers



Plumbing and Heating

Boiler Installations and Services

Oil | Biomass | Gas

01628 533 550

www.RedVanPlumbers.co.uk



Handmade in
Princes
Risborough
with a 10 Year
Guarantee

The beauty of sleep



At Hypnos, comfort comes guaranteed. But whilst each Royally Approved bed is individually handmade by master craftsmen, using the very finest natural and sustainable materials, it is you who carefully designs the look of your bed and creates a majestic centrepiece for your bedroom. So, to be sure that you enjoy a beautiful night's sleep and awake feeling revitalised and refreshed, visit our Showroom and design a Hypnos bed that's just right for you.



HYPNOS®

THE MOST COMFORTABLE BEDS IN THE WORLD

Visit our Showroom: Monday to Thursday 9.00am to 5.00pm | Friday and Saturday 9.00am to 4.00pm

Hypnos Limited | Longwick Road | Princes Risborough | Bucks HP27 9RS

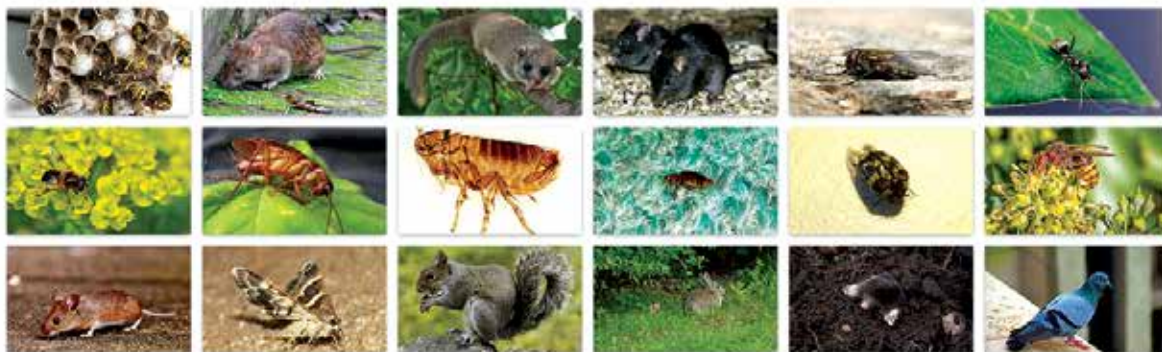
T: 01844 348200 | www.hypnosbeds.com

Alternatively, visit your local Hypnos Retailer:

Aylesbury Lucas Furniture **01296 486255** | **Gerrards Cross** Crystal Carpets & Furnishings **01753 889230**
High Wycombe Beadle Chrome Ltd **01494 523249** | **Thame** Greens Furnishings **01844 212560**

Hypnos is proud to be Carbon Neutral, complying with PAS 2060.

Martin Holman's Pest Control & Services



Giving you peace of mind
with an efficient and friendly pest control service

It doesn't matter what your pest problem is or whether you are a homeowner or business, I'm here to help you be pest-free as quickly as possible.

Over the last 19 years, I've dealt with everything from bed bugs to bees, cluster flies to cockroaches, moths to mice, and am licenced to remove Glis Glis.

Qualified with over 19 years' experience

Full public liability insurance

Treatment and prevention for rodents and insects

Domestic and commercial

Quick and reliable service

review

"We have used Martin's pest control services on several occasions whether it be to deal with wasps, bees, mice or Glis Glis.

Martin is very professional and reliable, responding promptly to any enquiries. He is extremely knowledgeable and clearly goes through the various options available and then deals with the problem in an efficient manner".

*Mrs M
Princes Risborough*



review

Your quick response and swiftly effective eradication of our horrible pest problems was marvellous, thank you.

We highly recommend your valuable and cost-effective service to anyone with a pest control problem.

Where have you been all this time!

*Mr & Mrs D
Princes Risborough*

(M) 07510 290321

(T) 01296 622972

ratman01@talktalk.net

www.martinholmanspestcontrol.co.uk

Nick Higgins
Forestry & Fencing
Contractor

m. 07768 383418
t. 01494 488835

45 Great Hampden Seasoned logs
Bucks available
HP16 9RJ



JOHN BISHOP *Est. 1972*
GARDEN MACHINERY

Sales & Service



HONDA
LAWN & GARDEN



Machine Hire

Scarifiers, Cultivators, Strimmers, Mowers
Hedge Trimmers

Blade/Chainsaw Sharpening & shear grinding.

We also stock a wide range of parts for various products.

Free Collection & Delivery



Tel No. 01494 563513

Mob. 07917 106004

1 Margaret Cottages, Northdean, High Wycombe, Bucks, HP14 4NH



SPRINGLINE CARS

PRIVATE HIRE

- Airport Transfers
- Events & Occasions
- London Trips
- Personal Service
- Owner Driver
- Local Knowledge

RISBOROUGH

01844 27 44 74

Know the voice, know your driver





K. J. WINDOWS & DOORS

UPVC Windows and Doors
Conservatories
Fascia and Soffits
Bi-Folding Doors
Misted and Broken Units
Repairs

All work guaranteed

Call Keith on 07539 367200
kjwindows@icloud.com



UNIVERSAL CARE

always there



Whether it be 1 hour per week or full time,
it is a privilege to be trusted to care for you
or your loved ones

5 Reasons to use us -

- High standard of care
- Established over 3 decades
- All profits go to charity
- Directors have hands on involvement in the business
- Competitive charges

Please call on 01494 678811
or email care@universal-care.co.uk
www.universal-care.co.uk

CG Tree & Garden Services

Tree surgery & felling
Fencing
Hedge cutting, topping & turfing
Woodchips & firewood for sale



Free estimates • qualified staff • fully insured

Tel: 01494 562045
Mob: 07798 896380



ROWENA's

(MCThA) (AoR)
NHS Register of Approved Reflexologists
Karuna & Reiki Master

Aromatherapy
Caci non-surgical face lifting treatments
Reflexology
Aqua detox
Indian head massage
Acupressure massage
Energy healing

Treatments carried out in
home based salon in Bryants Bottom

**Call Rowena for more information
or a free consultation**

Tel: 01494 488430
Mob: 07855 848261
rowena.j.templeman@gmail.com

Coles & Blackwell

Car Service & Repairs

Book online at:
www.colesandblackwell.co.uk

**Quality car servicing and repairs
much closer than you think!**

Where are we ? You will find us 300 metres down the small lane opposite the top of Bradenham Wood Lane in Walters Ash, High Wycombe HP14 4UX

Established in 1959



Servicing

Did you know you can get your car serviced by us without invalidating your manufacturers warranty? Legislation passed a few years ago means that you can now choose any garage of your choice to service your vehicle.

Courtesy cars

We have a fleet of new loan cars at your disposal whilst we service your own car or repair bodywork damage. Best of all - they are FREE OF CHARGE!
All part of the service you come to expect from Coles & Blackwell

air conditioning	_____
mot testing	_____
vehicle servicing and repairs	_____
crash repairs	_____
tyres, clutches & brakes	_____
computerised diagnostics	_____
batteries & exhausts	_____

Open Monday to Friday 9:00am to 5:30pm
Saturday 8:30 am - 12:30pm

01494 563102



mi
home
care
Our Care, Your Way

We cater our packages to suit you as an individual. We don't substitute our high quality services, and nor should you expect any less for your health care. We are proud to have been operating and providing care services from our High Wycombe office for the past 27 years and we will continue to be consistent with the care we provide.

MiHomecare are the face of domiciliary care within the UK and have a long-standing history of providing care. What we do is people-centred and this is deeply woven into our rich history. We offer comprehensive care packages for all. Our staff wear our badge with pride and conduct themselves with the values that our company is built on. All our staff are fully trained and have enhanced DBS checks.

The range of services we offer:

- Visits (30 minutes / 45 minutes / 1 hour)
 - Live-in 24 hour care
 - Assisted bathing
 - Holiday cover
- Light household duties and shopping as part of care package

for more information or assistance please call:

0333 1219601 / 01494 488040

Email: highwycombe@mihomecare.com

www.mihomecare.com

Driven? Tenacious? Focused?

Ability to thrive under pressure? Infectious temperament and energy?

If this is you and you want to either make that first step on the care career ladder or want to take the next step, then we could be that step. We are always looking for talented individuals who are willing to learn and push their career forward. In return we could offer an excellent progression within your role, competitive pay and excellent benefits. Please feel free to contact us.





FRASER-MORGAN SCHOOL OF DANCING

***** Naphill Village Hall *****

RAD *BALLET* for ages 3+



For more information
please contact
01494 816539 or
07974 121081

01494 816539
07974 121081



Nicki Thomas Web Design

Creating bespoke websites
for a
wide range of businesses

Visit www.nickithomas.co.uk
to find out more...

Hedgerows, Studridge Lane
Speen, Princes Risborough
HP27 0SA

Tel 01494 488665

Email nickithomas@storecomput.co.uk

M. R. COLLINS

GARDEN CONSTRUCTION

Est 1979

Driveway, Paving, Brickwork, Fencing
Groundworks, Excavations, Operated
digger hire.

We specialise in Block paving and all
types of slab laying Indian stone and
concrete offering a start to finish service
inclusive of excavations muck away,
supply and fix.

For estimate Phone: 01844 346360
Mobile: 07774 256732



Your Local Mobility Shop Independent Living Consultants



**Small aids for everyday
independence!**

**Larger items for
mobility and comfort.**



Call us, or visit our showroom :

01844 27 30 50

10 Woodway, PRINCES RISBOROUGH HP27 0NN

www.IndependentLivingConsultants.co.uk

WHO'S WHO

Bucks County Council - Member for Lacey Green	Carl Etholen	01494 564771
Hughenden Parish Council - Chairman	Roger Beavil	01494 715296
Lacey Green Parish Council - Chairman	Cathryn Davies	01844 342800
Lacey Green Parish Council - Councillor for Speen Ward	Roger Craft	01494 488343
North Dean Good Neighbours	Judith Broadley	01494 563178
North Dean Village Hall - Bookings Secretary/Fete	Jez Wicks	01494 563517
North Dean Village Hall - Chair	Alison Kent	ath@bfarms.co.uk
Pigotts 7 '48' Musical Evenings	Nick Wheeler-Robinson	01494 562167
Riding for the Disabled	Gloria Holmes	01494 488420
Speen Good Neighbours	Pat Richardson	01494 488627
Speen & North Dean Guides	Pauline Hall	01494 488372
Speen & North Dean News - Advertising	Tom Dent	01494 488943
Speen & North Dean News - Chair	Gloria Holmes	01494 488420
Speen & North Dean Toddler Group	Natasha Kann	07737 638618
Speen Baptist Church - Church Administrator	Sandy Mitcheson	01494 488875
Speen Fete - Chair	Lesley Thorn-Davis	01494 488851
Speen Helping Hospices - Secretary	Maureen Laing	01494 488397
Speen Heritage Group - Chairman	Peter Symonds	01494 488016
Speen Marquee	Greg Cook	01494 488939
Speen Playing Fields - Chair <i>playingfields@speenbucks.org.uk</i>	Clare Morris	01494 488553
Speen C of E Infant School - Head	Jacquie Coles	01494 488321
Speen School PTA - Co-Chair	Helen Davies	01494 488847
Speen Stores	Alison Templeman	01494 488258
Speen Tennis Court - Secretary	Philippa Lane	01494 488453
Speen Village Hall - Bookings	Sue Taylor	01494 488500
Speen Village Hall - Chairman	Bill Groves	01494 488180
Speen WI - Secretary	Jenny Pearce	01494 562333
St John's Parish Church	Revd Tony Bundock	01844 347741
Wycombe District Council - Member for Lacey Green& Hampdens	Cllr. Graham Peart	01494 488327

BEECHDEAN

Farmhouse Dairy Ice Cream

Made from fresh Jersey milk
and rich double cream

Ice Cream for Every Occasion!

- Made Fresh on the farm
- No artificial colourings or additives used
- Suitable for vegetarians
- Gluten free



Beechdean Dairies, Old House Farm, North Dean, High Wycombe, Bucks HP14 4NL
01494 563980 | www.beechdean.co.uk



@BeechdeanGroup



Beechdean Group

A photograph of a garden path leading through a rose archway. The path is made of light-colored gravel and is bordered by a low, neatly trimmed green hedge on the left. Above the path, a large archway is formed by a dense growth of roses in various shades of red, pink, and white. The path leads towards a white building in the background, partially obscured by greenery. The overall scene is lush and well-maintained.

Homes of Distinction

If you are looking for a very special property or have one that would benefit from our award winning marketing then we are ready to act on your behalf.

01844 343131
Princes Risborough Office

01494 711677
Hazlemere Office

FINE & COUNTRY
fineandcountry.com™