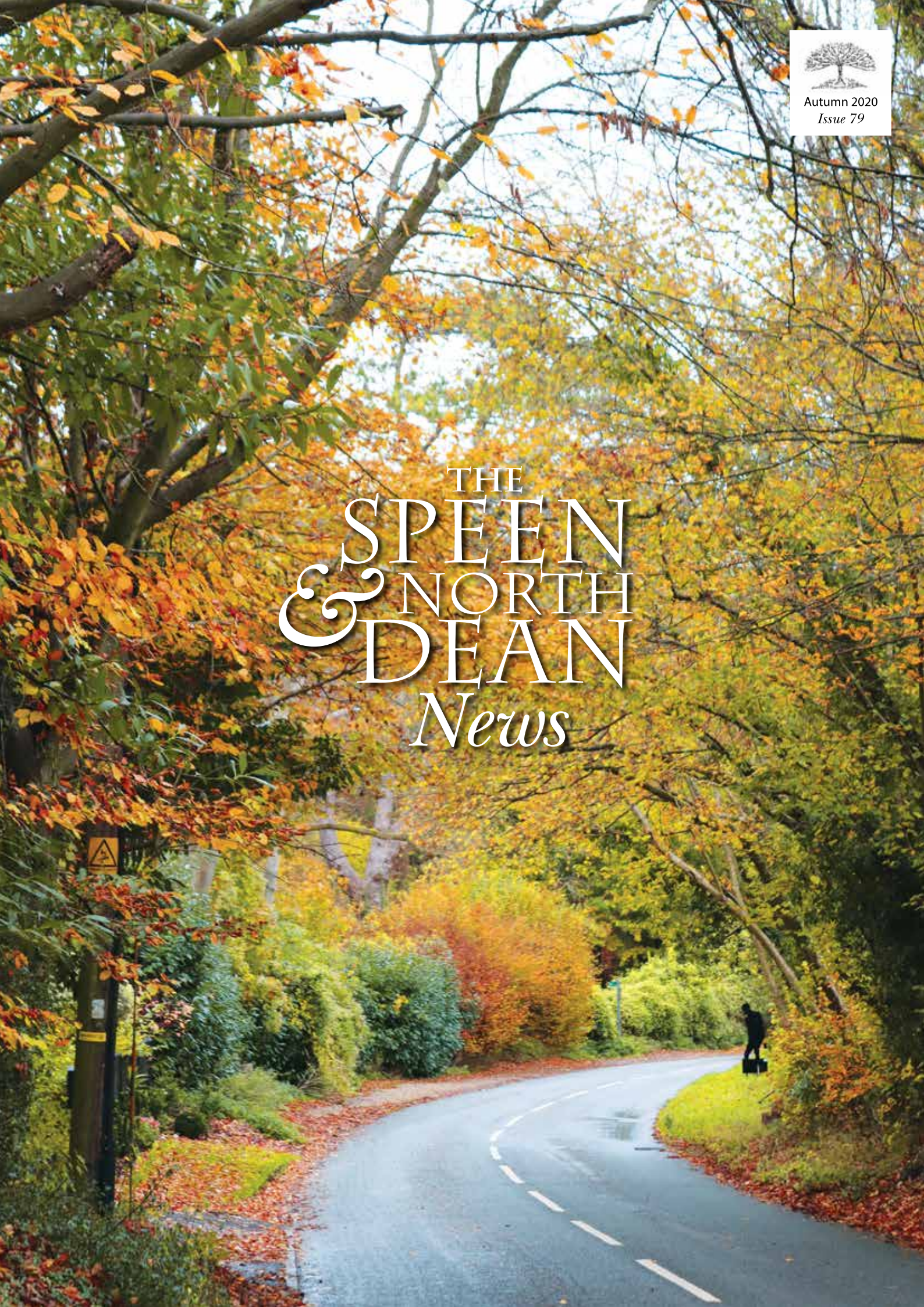




Autumn 2020
Issue 79

THE SPEEN & NORTH DEAN *News*



simply beautiful gardens

Alchemille has been designing and creating beautiful, innovative, inspirational outdoor spaces since 2004.

From urban courtyards to country estate gardens, we can make the simply beautiful garden of your dreams a reality.

FROM CONCEPT
TO CREATION



Image courtesy
of T Pottinger

01494 488072 • 07909 936718 • design@alchemille.co.uk

www.alchemille.co.uk

Get smart in your garden

From comprehensive plant care advice, to regular maintenance or a one-off project, our experienced team is ready to smarten up **your** garden.

For more information contact
Andy Merriman on

07827 290770



Working in association with Alchemille Garden Design

WELCOME!

to the Autumn edition of The Speen & North Dean News.

Well the clocks have gone back and all of a sudden it's dark by the middle of the afternoon and people are talking about Christmas. How did that happen? And at the time of going to press we are rumoured to be going back into lockdown, but we must take heart that we are lucky enough to belong to a very special community. We have done it before, and we can do it again! If anyone isn't registered on the local WhatsApp support group please do email c19@SpeenBucks.org.uk and you will be added to it.

And so to focus on positive news - we are all delighted to hear of the safe arrival of Alison at Speen Stores baby and we send our very best wishes to all the family.

Keep safe and well - see you in the Spring, hopefully with a full diary of village events to look forward to!



Taking the rules seriously in Monkton Way
by Clive Rainbow



Wonderful Wendy the Post Lady in North Dean
on Halloween, taken by Peter Keen

Next Edition

Copy for the next edition is **due by 10th March** with a planned publication date of early April. Please send photos separately from text, together with captions and a consent form (downloaded from the SNDN website www.speenbucks.org.uk) if any photos are of children. Please send to editor.sndn@speenbucks.org.uk.

With grateful thanks

To Hughenden Parish Council, Speen Festival, Speen Fete, Speen Stores Charity Committee, all our advertisers for their support of this magazine and all the volunteers who deliver it to your door.

Welcome Packs

The Good Neighbours scheme was set up many years ago and is now run by Pat Richardson in Speen. The service is to provide new Speen residents with a Welcome Pack of village information, so if you know of anyone new to the area please call Pat Richardson on 01494 488627.

Village News

If you are not already signed up to The Village Messenger do email Village@SpeenBucks.org to be put on the mailing list, with the word 'include' in the subject line - they will keep you up to date via email on a monthly basis with all the latest village news and dates for your diary.

HOME REARED MEATS,
LOCAL PRODUCE
& HOME COOKED FOOD



Free Home Delivery
Wednesday - Friday

Chequers Estate | HP17 0UT
SHOP Wed - Fri 10 - 6 & Sat - Sun 10 - 4
KITCHEN Fri - Sun 10 - 4
www.buckmoorendfarm.co.uk

LLOYD'S
WINES

INDEPENDENT WINE SPECIALIST

POP IN OR SHOP ONLINE
lloydswines.com

RETAIL & WHOLESALE



FREE LOCAL DELIVERY & EVENTS

07547 645917

Upper Warren Farm | Hampden Road
Prestwood | Great Missenden | Bucks | HP16 0JL

THE PAINTED KITCHEN COMPANY



PK
PAINTED KITCHENS.ORG

A: 5-7 DUKE STREET, PRINCES RISBOROUGH, BUCKS HP27 0AT
M: 07768 975 323 • T: 01844 346444 • W: PAINTED KITCHENS.ORG

Contents

Speen Stores Update	6-7	Wildlife Watch	21
Village Clean Up	7	Brandie the Crow	21
Big Sleepout for the Homeless	7	Speen Marquee	22
Speen Helping Hospices	9	Promote Your Local Business	23
King William IV Update	11	A Letter of Thanks	23
Speen Heritage Group	11	Beechdean Down on the Farm	23
Speen School	13	Spotlight on a Local business	25
Speen Church	15	Speen Environmental Action Group	27/29
Speen WI	17	Speen Playing Fields	31
North Dean vs Speen Golf Day	19	Speen Heritage Group	33



Lovely autumn photo by Martin Hart

List of Advertisers

A Cut Above, Alchemille Garden Design, Andy Ellis Tree Surgery, Ashridge Home Care, Aston Hearing, Beechdean Farmhouse Dairy Ice Cream, Briants of Risborough Ltd, Buckmoorend Farm Shop and Kitchen, CG Tree & Garden Services, Coles & Blackwell, Foursquare Land, Fraser Morgan School of Dancing, Heppelthwaites, Hypnos Beds, Jamie Harland Wildlife Gardener, JNP, John Bishop Garden Machinery, JSQ Farm Enterprises, Leigh Lewis Optometrist, Lloyd’s Wines, Martin Holman’s Pest Control and Services, MR Collins, Nick Higgins Forestry and Fencing, The Painted Kitchen Company, Paul Newman Ltd, PKInPrint, Rowena’s Therapies, Speen Pilates, Springline Cars, The Burnside Partnership, The Harrow Pub, The Smart Garden Company, Tudor Travel, Universal Care, Village Environmental Services.

If you use the services of any of our advertisers please do mention that you saw their ad in The Speen & North Dean News

THE FUTURE OF SPEEN STORES & POST OFFICE

News from Speen Stores Working Group - Autumn 2020

Since the last update there has been a flurry of activity regarding the shop and post office.

To recap, the Templemans, the current shop owners, informed the village in March 2020 that they wished to sell their shop business, its fixtures and fittings for £30,000. They expressed a strong preference for the village to take over the running of the shop as a community enterprise.



that Speen does not have spare voluntary capacity in the volume and timescale needed to set up and maintain a community-led business. Therefore, the SSWG could not recommend setting up a community enterprise to run the village shop as a workable solution in the present situation. Its preferred solution is for Bob Templeman to find a third party to purchase the shop and post office business. Bob has now

The Speen Stores Working Group (SSWG) was established with the objective of finding solutions to preserve the shop and post office. A questionnaire sent to villagers resulted in responses from over 70 residents, expressing unanimous support for the continuation of the shop and post office.

The SSWG examined a range of solutions to enable the shop and post office to continue. As the Templemans' strong preference was for the village to take over the running of the shop, it was the SSWG's priority to investigate that option. This involved contact with the Plunkett Foundation (which supports rural community ventures), and managers of community shops. In addition, documents were examined including the current lease of the premises, the freehold of which is owned by Buckinghamshire Housing Association (BHA) and The Land Registry entry for the premises. Meetings took place with the Templemans and with the CEO of BHA, who informed the SSWG that BHA was supportive of the shop continuing in business. Detailed research was undertaken into the practicalities of setting up and running a community shop. Key elements involved setting up a legal entity to take over the lease of the shop, to trade, employ staff, manage volunteers and enter into contracts. A membership structure for democratic governance, a volunteer management committee as well as arrangements for the management of the shop on a daily basis would be required.

It was evident that setting up and running such a business would require considerable time, energy, effort and cost. Research showed that the majority of community shops employ paid managers / supervisors as well as a large panel of volunteers, the average on rota is 20. Recruiting, retaining and managing volunteers is a major challenge.

The SSWG took into account its knowledge of Speen and its many active voluntary organisations. It concluded

found a prospective purchaser who wishes to take on the business, but that is not the end of the story.

In August, BHA submitted a planning application to Buckinghamshire Council, Wycombe Area. This proposed the conversion of the first floor of the premises previously used as a hairdresser salon into a self-contained residential flat. This plan removed access from the shop to toilet and kitchenette facilities thus rendering the shop non-viable. It was apparent that no needs assessment had been undertaken by BHA as is required under Policy DM29 of the Wycombe District local plan. The SSWG produced guidance for villagers to raise objections to the proposals and engaged with local Councillors, the Parish Council and also with the office of Rob Butler, MP. This resulted in over 150 objections being made. Subsequently, BHA submitted an amendment to the original plan. In this scenario, a toilet and wash hand basin were being provided for the shop on the ground floor but the plan involved a reduction of 50% of the available storage space. This amendment would still render the shop non-viable. The SSWG provided further advice and over 250 objections were lodged on the Wycombe Planning Portal.

On 15 October 2020, BHA withdrew both applications

What happens now? The SSWG is seeking clarification from BHA about their plans for the building. The hope is that the prospective purchaser of the shop and post office business will be able to negotiate a new lease with BHA to enable the shop and post office to continue. With the possibility of a new Covid lockdown approaching, the vital lifeline that this facility provides once again comes into sharp focus. The SSWG is doing all that it can to ensure that the shop and post office remains at the centre of the community. Keep an eye on the Speen village website for the latest information. www.speenbucks.org.uk

spenstorescrusaders@gmail.com

THE FUTURE OF SPEEN STORES & POST OFFICE

Update from The Buckinghamshire Housing Association (BHA)

Phil Green, Chief Executive

Background

BHA has owned the shop/post office in Speen for over 20 years. The shop rent of £3,000 per annum has never been increased and the entire rental income (over £60,000 in total) has been donated to the Speen Shop Charities Fund, supporting local good causes. The five houses built for Social Rent behind the shop have helped many local families into good quality, affordable homes for rent.

Planning Application

As most people will be aware, our recent planning application has been withdrawn. We will now carefully consider the views expressed before deciding on our next course of action but, as has been the case throughout, our firm intention is to ensure that the shop/post office can continue to operate on a stable footing into the future.

Villagers should be aware that the original suggestion of creating living accommodation on the upper floor to create a "living over the shop" arrangement emanated, in 2018, from the current leaseholders. A request was also made to consider increasing the retail space on the ground floor. Designs were drawn up but no planning application submitted because the current leaseholders changed their plans and advised us that they no longer saw a longer term future running the shop.

A new 18 month lease was granted earlier this year to allow time for the current leaseholders to "sort things out" and for BHA to find a new leaseholder and to explore the planning options further.

All this was explained to members of the Speen Stores Working Group prior to the submission of our recent exploratory planning application; indeed this Group actively encouraged us to make such an application.

Shop Lease

The current shop lease expires on 30 September 2021. Marketing of the lease would normally commence around six months before the lease expiry date but we have been approached by an interested party, with whom we are having direct discussions. We have shared with them the plans we discussed with the current leaseholders and they are excited by the prospect of additional shop space on the ground floor and the potential to provide living accommodation on the upper floor but they are also interested in taking a lease of the existing building. Discussions are continuing.

Phil Green
Chief Executive

VILLAGE CLEAN UP

Gloria Holmes

On 20th September about 20 enthusiastic villagers took part in the annual Village Clean Up, clearing all the approach roads to the village using litter pickers and hi-vis jackets provided by the council, who picked up the 25 bags of litter we collected early the next day.

Daphne Westray, Sue Taylor and friends from the WI kindly handed out tea and cakes over Daphne's garden gate, to meet Covid regulations. Many thanks to all involved.



BIG SLEEPOUT



Our amazing Gloria is raising essential funds for the charity Wycombe Homeless Connections by joining in their **Big Sleepout at Home** initiative one chilly night in November in her caravan in the garden, with her dogs Joy and Nessa to keep her warm.

Gloria has helped and supported this charity for many years. If you would like to sponsor her please visit:
<https://uk.virginmoneygiving.com/GloriaHolmes>



A different kind of care company – providing around the clock care in your own home.



Our care company can help maintain your independence whilst being supported by our professional carers in your own home.

We provide care for people in many different situations. For those with a specific health condition or sometimes for people who simply don't feel safe alone anymore and want somebody with them for peace of mind and companionship.



Ashridge Home Care is a Buckinghamshire based business with over 30 years' experience in care. Our ethos is based simply on providing the type of service that we would want for our own loved ones.

Call us today | 01494 917 344

Email | info@ashridgehomecare.co.uk

Find us online | www.ashridgehomecare.co.uk



SPEEN HELPING HOSPICES

Gráinne Suter

Sadly, we will not be able to hold the Christmas Market on the 14th November. However, adversity is the mother of innovation!

To make up for lost revenue we will now go online and sell a range of gifts for all the family, including the dog! As soon as we are set up we will let you know via The Village Messenger, and the two village WhatsApp groups. So, look out for our launch on the Speen village website at www.speenbucks.org.uk/speen-groups/speen-helping-hospices.

Think local and shop local to help us raise money for the four hospices Helen House for Children, Florence Nightingale House, Rennie Grove Hospice Care and South Bucks Day Hospice. 100% of funds raised will go to the hospices.

Face Masks

As you will have seen this week, some face masks on sale in national stores are inadequate, no more than a fashion item and provide minimum protection. The face masks made by Speen Helping Hospices are made-up of three layers - two of closely woven cotton plus a liner. They are constructed as an envelope so an additional filter can be inserted but removed before washing. They are fully machine washable. 100% of funds raised will go to the four hospices. They are £5 each and our Christmas range will be on sale shortly. To order contact Gráinne on 07778 803260.

The Mother of all Christmas Hampers

Raffle tickets will be on sale shortly to win a stunning Christmas Hamper. Tickets will be £5 each. If every household in Speen and North Dean bought a couple of tickets we would more than recoup the lost revenue from the cancelled Christmas Market. Look out for details. Again, 100% of funds raised will go to the hospices.

Carol Singing in Speen in December

Last December Speen Helping Hospices reintroduced carol singing back into the village. It was great fun and a good fundraiser, £706.67 was raised over two evenings and two mornings! We will be back again this year with a bigger group and intend to cover the whole of the village. We will circulate dates and routes nearer the time. It would be wonderful to get to £1,000 this year. We could do that with your help!

SHH Fundraising Initiatives 2021

If you would like to be involved in our fundraising events or have fundraising ideas, or would like to sponsor an event or donate a raffle prize please do contact Gráinne on 07778 803260.

THE HARROW

Serving great food 7 days a week



YOUR LOCAL, FAMILY AND DOG FRIENDLY PUB
SERVING DELICIOUS, FRESHLY PREPARED FOOD,
LOCALLY SOURCED REAL ALES
AND A GOOD SELECTION OF WINES

FOOD SERVED:

MONDAY-SATURDAY : 12NOON-9PM

SUNDAY : 12NOON-5PM

QUIZ NIGHT TUESDAY 8PM

*There's always something going on at The Harrow Pub,
so get yourself down here
and enjoy the beer, the entertainment and the company.*

01494 564105

WARRENDENE ROAD, HUGHENDEN VALLEY, HIGH WYCOMBE HP14 4LX

WWW.HARROWHUGHENDEN.CO.UK

KING WILLIAM IV UPDATE

Since the last update we have some good news in that we re-registered the Pub as an Asset of Community Value in May, concurrent with which David Hill notified Bucks Council of his intention to sell. We naturally registered in Expression of Interest in buying the KW4, which gave us a 6 month moratorium, ending 3rd March 2021, to raise finance and agree the pub purchase. The pub cannot be sold during that period to anyone other than a Community Interest Group.

We have over the last 2 years made 3 offers to buy the pub, all of which have been refused. The last of these was in December 2019 and was a fully funded offer, in line with the Market Valuation report, which we commissioned from Christies in the September. Unfortunately, they could only estimate the costs of refurbishment, since the surveyor was not granted access inside the building. We have concentrated our efforts on raising pledges from the community, meeting individually with over half the households in the village and sharing a broad vision with potential investors. This funding drive was amazingly successful, with over two thirds of those spoken to willing to invest, raising sufficient money to buy the pub. Once again, the villagers of Speen responded to the call when asked to support our Community, but the offer was refused.



Given the moratorium until March, we have, via the Plunkett organisation, now applied to the FCA to convert from a Ltd company to a Community Benefit Society. This is a legal entity specifically created for groups like us trying to save Community Assets and after consultations has been deemed

better suited than the Ltd Co.

We therefore plan to launch a Marketing and Publicity campaign to save our pub in order to add impetus to our bid. There will be much more news to follow as we reinvigorate our campaign, of which you have been hugely supportive.

We have a wide variety of villagers in different circumstances and at different stages in their lives, we intend to re-open the pub for the wellbeing of our entire village, for the existing villagers (many of whom met at the pub), for the newbies (who we don't get to meet) for the Oldies and Singles, for Families (opening as it does onto the Playing Field) and for all Village Clubs and activities. We have created a village Covid Buddy system to support the needs of everyone in the village, especially helping the vulnerable and shielded. When we come out of this pandemic it would be great if the pub could provide a social hub for all our buddies.

Letter to the Editor in response to the King William IV Update in the last issue.

I think you are misinformed about the Unitary Council - this was legally created on 1 April 2020 with all the councillors from the 5 'legacy' councils (almost 200 of them). Although busy with COVID issues, the new single Council is fully up and running. There will be elections in May 2021 when the number of councillors will reduce to 141, 3 for each of the 47 wards.

Regards, Diane Westray

SPEEN HERITAGE GROUP

Peter Symonds



This LT1076 is a single deck bus known as a Scooter. It was built by Daimler AEC in 1931 and retired from

service in about 1950. It was sold to a dealer in Bracknell before arriving in Speen, possibly in the Darvills Hill area, where it was used as a chalet and possibly a chicken house. It was moved to Kent in around 1994, has since been beautifully renovated and is now an exhibit at the London Transport Museum depot in Acton, where it was spotted by Speen resident Simon Hobbs. *Does anyone know more about its Speen history?*





TUDOR TRAVEL

Taking you there in style



**Providing luxury transport
for the local area**

Five and eight seat MPVs

22-34 seater midi-coaches

Group trips, corporate events, days out

Local and long distance

Fully insured and licenced

Private & business accounts welcome



01494 488887 / 07771 881245

info@tudortravel.co.uk

www.tudortravel.co.uk

SPEEN C of E SCHOOL & PTA



Speen School have been studying the history of the village during this last half term. The children have been playing the role of detectives, in spotting clues which might give an insight into previous life in the village. For example, the names of some of the houses, dates on buildings, the pictures on the Speen Village sign, places where it looks like there was a pond etc.

We were delighted that the Year 2s from St John's School joined us for one of our village clue hunts and they kindly returned the invitation for our Speen pupils to walk with them around Lacey Green to learn about its history.

Inspired to join the local community's care for the environment, Speen pupils joined in on the Great British Cleanup operation, taking great delight in learning how to use the litter picker tools! Fortunately they didn't find too much litter which had been left carelessly in our beautiful village.

Jacquie Coles, Headteacher



With lots of new families in Speen School and a Covid environment it was always going to be difficult to do the 'normal' activities; but of course, the children and parents were unstoppable. Whilst the explicit aim of the PTA may be to raise funds to support the school, planned activities also create fun activities for the children and inevitably the parents too, whilst fostering strong, supportive bonds and a great community. So, despite the difficulties, it has been really important for the new team to find ways to raise some money and have some fun!

In September we had a socially distanced Macmillian Cancer Coffee Morning in the playground and raised over £200; the first opportunity for many new parents to meet each other.

With the prospect of our normal fundraising opportunities being curtailed we have been looking for support through new initiatives. We now have a printer cartridge recycling bin plus you can drop off your unwanted clothes, bags, scarves, ties and shoes at school 9th-13th November and 7th-11th December. We hope these schemes will not only continue our village recycling efforts, but that sufficient quantities will be rewarded with valuable funds.



New faces at the PTA

Your online shopping can also support us by clicking through shopping portals Amazon Smile or Easyfundraising to get to your favourite online retailer. Just search for 'Speen School PTA' first so we get allocated donations from your purchases – we would be very grateful.

Next month we are hoping to achieve Christmas Wreath Making workshops if the rule of six allows! Mrs Coles has been so supportive in helping us achieve what we can and it's great to see so much enthusiasm and new ideas to keep the PTA thriving.

Cat Cook & Vanessa Samuels, PTA Co-Chairs



FRASER-MORGAN SCHOOL OF DANCING

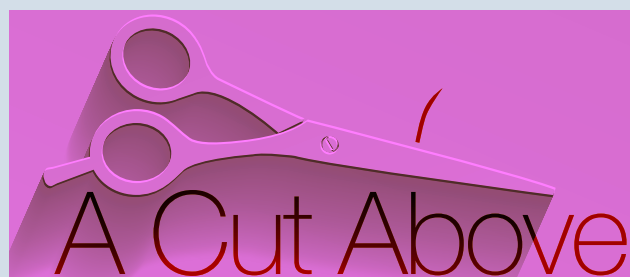
***** Naphill Village Hall *****

RAD BALLET for ages 3+



For more information
please contact
01494 816539 or
07974 121081

ROYAL ACADEMY OF
DANCE
REGISTERED TEACHER



Have you discovered
your local salon yet?

A Cut Above is situated in the heart of Speen village with easy parking. A unisex salon with a warm family friendly atmosphere.

Chris Stiles and Cathy Wardle are experienced professionals providing cuts, colour, styling and hair care advice at an affordable prices.

For appointments: **Salon 01494 488 899**

Chris 07789 115 942 | Cathy 07753 858 611

A Cut Above, Over Speen Stores, Chapel Hill, Speen, HP27 0SL

We hope to see you soon!



ROWENA's

(MCThA) (AoR)

NHS Register of Approved Reflexologists
Karuna & Reiki Master

Aromatherapy
Caci non-surgical face lifting treatments
Reflexology
Aqua detox
Indian head massage
Acupressure massage
Energy healing

Treatments carried out in
home based salon in Bryants Bottom

Call Rowena for more information
or a free consultation

Tel: **01494 488430**

Mob: **07855 848261**

rowena.j.templeman@gmail.com

The Essential Message of Christmas - More than Presents - Presence

"Behold, the virgin shall be with child, and bear a Son, and they shall call His name 'Immanuel,' which is translated, 'God with us.'" - Matthew 1:23

Why is Christmas such a magical time of year? I think it is because everyone is expected to be happy. Consider all the popular movies. Each one has a feel good plot to leave us with a sense of wellbeing. However, Christmas is not always a happy time for everyone and especially after such a strange pandemic year.

For someone who has lost his or her job, this is not the most wonderful time of the year, because so much emphasis is placed on a merry Christmas being a materialistic one. For those unable to be together with loved ones, kept apart by a situation beyond their control this is a lonely season. Then there are also those who have lost loved ones, and the joy of this season has turned to grief. Things that once made people happy at this time of year now make them sad. Those things that once brought happiness are now things that bring sadness, because they evoke memories of better days and better times spent together. Christmas becomes a difficult time for some.



There are many who are in need of encouragement at this time of year. They do not need a Christmas present; they need His Christmas presence. They need a reminder of what this season is all about. It is not about things. It is not about presents. These things have their place, but we need to remember the essential message of Christmas.

Immanuel - God is with us.

Therefore, for the hurting person, the lonely person, the sorrowing person, this is the time of year to bring the gift of encouragement to them and say, "The message of Christmas is: God will be with you. God will help you. God will strengthen you."

So look for opportunities to share the love of God during this season, because it is a time when we seem to be more open to engaging in conversation with others. Now is a great opportunity for you to bring encouragement to someone who is struggling and who needs your encouragement today?



HARVEST FESTIVAL: At our Harvest Festival we celebrated with thanksgiving the Lord's bountiful provision with donations to bless local families in need through One Can Trust and Saunderton Lodge.



CHURCHYARD CLEAN UP:

We had perfect conditions for our annual Churchyard clean up in October with 19 folk joining in during the course of the morning to cut hedges, trim and clear paths complementing Andy Thomson's fantastic work over the summer keeping the grass mown. Do take a moment to admire the work next time you visit!



CHAPEL HILL KITCHEN:

The Café reopened in September with new measures in place to keep everyone as safe as possible. It has been a joy and pleasure to welcome back many friends and visitors – Thursdays 9am-12pm.

Speen Pilates

STRETCH • STRENGTHEN • CONTROL



BOUTIQUE PILATES TRANSFORM YOUR FITNESS

Pilates can address structural imbalances, pain and difficulty with movement. It aims to enhance your posture, strength and flexibility, body tone, stamina and general fitness whilst releasing unnecessary tension.

ONE TO ONES ON STUDIO EQUIPMENT

One to one tuition offers accelerated learning and improvement, the Reformer uses spring loaded weights to improve your posture, strength and stamina leading to a toned body.

SMALL GROUP MAT CLASSES

Monday and Tuesday at 9.30am and 6.30pm
Thursday and Friday at 9.30am

I also offer bespoke classes for groups of up to 6 friends!

More details on the website
Booking essential

★ ★ ★

The Studio at Midmede, Chapel Hill, Speen
Amanda 07733 307475
amandapilates@btinternet.com
www.speenpilates.co.uk



Like everyone else we are all very restricted in our activities this year. We managed to meet at an outdoor venue in August thanks to the lovely weather and there being less than 30 of us. Everyone was so pleased to catch up as a group after such a long time. We were hoping to return to meetings this autumn, when the rule of six came in and stopped all those plans. But we remain in contact in small, socially distanced groups. The County and National Federations have kept some things going through zoom meetings but we all know that is not quite the same.

A bright spot in the year was receiving Royal letters. Princess Anne, the Princess Royal wrote saying how she remembered coming to Speen to visit the home of Rest for Horses. Her Majesty The Queen wrote offering her congratulations on our achieving 60 years. These will both take pride of place in our archives.

One sad result of the pandemic and lockdowns is that we are likely to lose our beloved Denman. The Manor House at Marcham in Oxfordshire was bought with donations from WIs around the country in 1948 as a residential college for WI members. Over the next 70 years it grew and



Denman

improved and provided courses in cookery, arts, crafts and lifestyle topics. It is a haven to which members can go; to learn, to make friends and to relax away from home. Unfortunately it relies on high levels of bookings and with first of all lockdown and now limited group numbers it is difficult to see it remaining financially viable. Many of our members have fond memories of our visits there and we shall certainly miss this wonderful place.

Thanks to members' donations we have now raised the £500 needed to provide a water tank to a village in South Africa. A volunteer from the charity providing these so inspired members that they decided to raise the required amount by making private donations. The tank should be in place very soon and will transform the lives of those who currently have no clean water.

We are travelling hopefully and looking for innovative ways to keep members in touch with each other and to support each other through these less than satisfactory times. Perhaps our special 60th Anniversary has passed without as many celebrations as we had hoped, but our 61st year could be a great replacement.



For all your Family's Ear and Hearing Concerns



Amersham . Princes Risborough . Thame

www.astonhearing.co.uk

01494 733840



Look out for our monthly
FREE FAMILY HearToday EVENTS
www.astonhearing.co.uk/heartoday



NORTH DEAN vs SPEEN GOLF DAY

Dick Pooley



Socially distanced village golfers

Having held such a successful and popular event last year at Studley Wood Golf Club, near the tiny little village of Studley cum Horton, in the beautiful Oxfordshire countryside, we decided to repeat the venue.

Thus thirty-two intrepid golfers (fourteen from North Dean and eighteen representing Speen) gathered there at around 9.15am to get stuck into bacon rolls and coffee. The weather was extremely kind to us, with no rain but with quite a number of holes governed by the wind, making the first tee shots very interesting!

As last year, the course was in excellent condition, although, with all the recent heavy rain, quite a number of players struggled with the heavy underfoot conditions, especially if a ball unkindly left the fairway!

There was the usual evidence of animals, particularly on some greens, where there is a special local rule on moving one's ball from deer hoof marks. Therefore no excuses for not putting straight!

This year the scoring was not as strong as last and I feel sure that was down to the more severe weather conditions.

And as is often the case with sport generally, the result was almost a complete reversal from last year. All additions, subtractions and calculations were of a more manual type this year, as the poor Speen Captain, took his first drive and had to retire with a damaged back problem.

The result was:

North Dean 22.4 average stableford points
Speen 26.7 average stableford points

and thus Speen took away the handsome large trophy, which has been played for since 2004. This was originally given to the two villages by Janet and Ivor Beeks and is known as the "Autumn" trophy.

The individual results were as follows:-

Nearest the Pin on the par three 11th

Barry Woledge (North Dean)

Longest Drive on the par five 18th

Julian Matthews (North Dean)

Overall Winner with 36 points

Francis Gater (Speen) {on count back}

Overall Second with 36 points

Keith Fisher (Speen) {on count back}

Overall Third with 35 points

Tim Crossley (Speen).

So, a "very well done" to the Speen team and a "more practice required" to the North Deaners.

I would like to thank all the players for turning out in a year of terrific upheaval. I would also like to thank the Speen Captain, Jo Allan, for organising his troops and send him our best wishes for his back to recover in time for the Spring event, which of course we could not hold this year.

Studley Wood Golf Club need to be congratulated too for the course condition and helping with the organisation of our prestigious event.

A. ELLIS *Tree Surgery*

Fully Qualified and Insured Tree Surgeons



We undertake all aspects of
hedge trimming and
tree surgery

For a free, no obligation
quote please contact us

T: 01494 817234 M: 07709 491589

E: info@aellistrees.com

www.aellistrees.com

For fencing enquiries call Mike on:

T: 01494 868466

WILDLIFEWATCH

Peter Symonds

Late 2020

Autumn colours are now reaching their peak in our woodlands but some of the trees have already lost their leaves. Ash die-back has been apparent in our villages for a few years. The large Ash overlooking Ridgleys Field is now showing early signs of die-back with reduced foliage apparent. Works on improving the meadow at Ridgleys Field have continued following the seeding with Yellow Rattle carried out by our SEAG team last year. The long grass has been cut, collected, baled and removed to give greater opportunity for more wild flowers to become established. Several of the nest boxes around the field, constructed by village children at the Festival, have been used this year.



The Heron has been an occasional visitor to our pond as have two Grey wagtails in September. Jeremy Symondson has reported Siskins on his feeders which may be locally based birds as opposed to winter visitors. Other interesting sightings in the wider area include a Hobby at Lacey Green recorded by local birder, Mike Collard. An unusual record is a Dartford Warbler seen and photographed in a garden

in Chesham in mid-October. In High Wycombe a pair of Peregrine Falcons have been frequenting the church town in the middle of town. Winter birds are now arriving in the area in large numbers. Former Speen resident Dick Seekins recorded 85 Redwings and 32 Fieldfare in Great Hampden on 14th October. Bramblings, Crossbills and Hawfinches have been recorded in the wider area.

Most nesting is now completed but some birds continue quite late. In our front garden I found a Wood Pigeon sitting on eggs in late August. We still have a family of Moorhens in our back garden. Their final breeding attempt resulted in 5 young in early August and four fully grown young and their parents remain present whilst our second brood of 8 Mallard left a couple of months ago. Three pairs of House Martins were still present at the Holmes' house off Chapel Hill in September. Other summer visitors have left by this stage and birds that have been bred to the north pass through the district. Yellow Wagtails, Wheatear, Stonechat and Whinchat were all recorded passing through Prestwood.

As well as winter birds arriving, this time of year sees more local animals making use of our houses. Local rodents including mice, rats and Glisglis become an increasing problem particularly in our lofts and outbuildings. They can remain hidden in loft insulation but equally might turn up in our kitchens as one of our older residents found when a Glisglis appeared from her kitchen cupboard.

Please let me know of interesting sightings 488016 or psymonds@gmail.com.

BRANDIE THE CROW

Barrie Randall

About seven and half years ago my children brought Brandie to my door. She was very young and was about to be pounced on by a cat. She had a twisted foot, terrible feathers, no tail and a calcium deficiency.

After feeding her properly her tail and feathers grew. I built her a big aviary and brought her inside every night to spend evenings interacting with her. Looking after her is a huge commitment and changed my life completely. She would not survive in the wild, yet is still wild in every way, and we regularly free-fly her at Quainton.

She is now well known on a bird forum called 'For the love of crows' and has friends all around the world who follow her. Interaction is the most important thing for her, so if anyone would like to meet Brandie and spend a little time with her in her aviary here in Studridge Lane in Speen they would be welcome.

One day I will write a book about my time with her, so much has happened.



SPEENMARQUEE

Greg Cook

It's been a very quiet year for the marquee with every planned hiring cancelled. The biggest challenge for 2021 is going to be remembering how to put it up!

We have a healthy bank balance at the moment and whilst the plan was always to generate enough funds from hiring to replace the marquee at approximately 10 years, the current one is still looking good despite its age (purchased in 2009) so we are going to run it on for a couple more years yet. To support this decision, we are getting the side panel support poles refurbished which will brighten the whole thing up a little.



I must extend thanks to all those who have supported the marquee over the years in whatever guise. Notably, Roger Anderson, who has just retired as treasurer after 20 years, and John Holmes who keeps claiming he has retired but I still get information from him and he still gets

contacted for bookings. Thank you both for your outstanding efforts.

Looking forward to 2021, we have bookings already coming in with two village weddings and a date for your diary.

Greg Cook
07917 775 116

Specialist Private Client Lawyers & Tax Professionals

Trusted advisors to individuals and their families

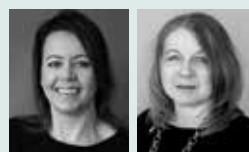
“An outstanding niche private client firm...its practitioners are recommended as experts in their field, providing high-quality advice...its client service is second to none and every client is valued equally and treated with sensitivity and genuine compassion.”



We can assist you with specialist legal advice on Wills, inheritance tax planning, powers of attorney, helping with probate and generally protecting your assets. We also help protect the vulnerable or elderly.

Our tax specialists are also here to help with your personal tax compliance, including preparing personal tax returns and offering guidance on HMRC correspondence. They can also advise you on tax planning on the sale/gift of assets, including the new reporting of capital gains on the sale of private residences.

Dealing with your own affairs and getting them in order can appear daunting. We're here to make life easier. Do pick up the phone or email us and we would be happy to have a free, no-obligation initial chat with you. We can meet on video call or in person when safe to do so.



Anna Burnside PARTNER
anna.burnside@theburnsidepartnership.com

Jacqui Birks TAX DIRECTOR
jacqui.birks@theburnsidepartnership.com

For further information, please contact:
info@theburnsidepartnership.com



Jubilee House, Third Avenue, Marlow, Buckinghamshire SL7 1EY
T 01628 301 221 E info@theburnsidepartnership.com W www.theburnsidepartnership.com

FOLLOW US ON:



B
THE BURNSIDE
PARTNERSHIP
OXFORD MARLOW LONDON

PROMOTE YOUR LOCAL BUSINESS

Philip Suter

The Speen village website has a section advertising local Speen and North Dean businesses. If you are looking for an electrician, want to join a pilates group or just need to stock up on your wine supply you can find these contacts and many more at speenbucks.org.uk/Businesses.

If you are a resident, why not promote your business on the website by contacting Philip Suter philip.suter@yahoo.ie. Listing is free of charge.

A LETTER OF THANKS

Louise Lucas

Dear Friends of Speen and North Dean

I trust you are all keeping well under continuing difficult circumstances. Just wanted to drop you all a line to say thank you ever so much for all the support during lockdown that you gave our pub in Great Hampden by using our take away food & beer service! It was such a great help to our family and we are very grateful to you all.

Thank you all once again for your amazing support and see you very soon. Keep well.

Love Louise, Constantine, Evie & Emily Lucas
The Hampden Arms, Great Hampden



BEECHDEAN DOWN ON THE FARM

Gill Kent

If you drive down the Hughenden Valley each morning to work or school, you must have noticed that the cows have disappeared from North Dean.

Last month our son Charles took a difficult decision and decided to sell the Jersey milking herd. Many other farmers are taking the same decision. Why? Today the selling price of milk at 24p/gallon is the same as it was in 1995. Needless to say costs have risen enormously since then, so unless you can increase herd size and can find good labour, (neither of which he was able to do) the business becomes unprofitable. The farmers who have contracts with a supermarket receive a better price, but have to conform to a long list of rules and regular inspections. The cows must be allowed to graze grass even if the pasture is contaminated with droppings from TB contaminated badgers! The supermarkets also require



to see a full disclosure of all the farmer's business accounts (not just the dairy section). What cheek!

Although down the ages the raison d'être of farming has always been to produce food, the government is now paying farmers grants for 'rewilding'. They are also paying for installing new footpaths, but as our farm already has footpaths in nearly every field, we do not qualify! A lot of our poorer

land is suitable for rewilding so if you see a field of weeds you will understand what is happening.

We will continue to grow cereals on the better land and the grazing of the grass fields will be shared between a herd of Hereford cattle and assorted young beef animals. One cannot help but wonder if the impact of Covid-19, Brexit and the disastrous cereal harvest this year will bring back the emphasis on food production again.

Heppelthwaite

The Red Van Plumbers



Plumbing and Heating

Boiler Installations and Services

Oil | Biomass | Gas

01628 533 550

www.RedVanPlumbers.co.uk

SPOTLIGHT ON A LOCAL BUSINESS

Sarah Booth

Cane+Rush at sportsmanscorner

I am based in North Dean near to High Wycombe, once renowned as one of the main historical centres for the chair making industry. Years ago, in beech woods close by, bodgers would use a pole lathe to turn chair legs for the chair workshops in the town. Additionally, chair caning/rushing and basketwork were seen as part of a natural working, rural village lifestyle.

My first experiences of working with cane and willow began in the 1980's, with an introduction into chair caning and rush work. During the last seven years or so I have revisited these skills, and my Cane+Rush workshop/studio at Sportsmanscorner is where I now manage the many aspects of my basketwork and cane and rush seating, sourcing my materials of willow and rush both locally, from the Northampton/Bedfordshire borders and also further afield from various suppliers in Somerset.



Each item is individually handmade and unique. The methodology of the craft, the care and repetition of weaving the different patterns and techniques, such as fitting, randing, pairing, plaiting, slewing and waling, and the total concentration required for the task in hand all combine to make it a totally absorbing craft that is creative, imaginative, challenging and problem solving. Combining my career background in graphic design and all things baskets, I now happily get to do what I really enjoy.

Looking back at traditional ideas and concepts and moving them forward, making them into desired contemporary objects in a modern day setting is very rewarding. Influenced by market trends, craft market events, commissions and requests I continue to enjoy creating and producing many varied pieces of basketwork to make practical and aesthetically pleasing homeware items.



I will be exhibiting at the Speen Helping Hospices Christmas Market on 14th November

Visit my website to see more examples of my work at www.sportsmanscorner.co.uk

Email: sarah@sportsmanscorner.co.uk

Instagram: Sportsmanscorner

www.speenbucks.org.uk



UNIVERSAL CARE

always there



Whether it be 1 hour per week or full time,
it is a privilege to be trusted to care for you
or your loved ones

5 Reasons to use us -

- High standard of care
- Established over 3 decades
- All profits go to charity
- Directors have hands on involvement in the business
- Competitive charges

Please call on 01494 678811
or email care@universal-care.co.uk
www.universal-care.co.uk

Home Energy

Jo Podmore

Winter is coming and we are firing up our heating systems. No mains gas supply in Speen and North Dean means that most homes are heated by oil burning, producing large amounts of CO₂.

But there are greener ways of keeping warm. If you are considering an alternative energy source or planning building work such as an extension, now is a good time to investigate renewable heating options and associated thermal upgrading of your home. There are substantial government grants available to help cover costs.

Independent and impartial advice on how to reduce your energy bills, plan home improvements and make your home warmer and greener is available at www.simpleenergyadvice.org.uk.

The Renewable Heat Initiative is a scheme designed to reward financially those who use renewable energy to heat their homes. The scheme could give you quarterly payments for seven years if you install or have already installed renewable technology to heat your home. It is available for systems completed by 31 March 2022.

www.ofgem.gov.uk/environmental-programmes/domestic-rhi/applicants

The Green Homes Grant provides vouchers worth up to £10,000 to help cover the cost of making energy efficient improvements to your home. Improvements might include insulating your home to reduce your energy use or installing low-carbon heating to lower the amount of carbon dioxide your home produces.

www.greenhomesgrant.campaign.gov.uk.

There are companies and organisations that can assess your home's suitability for renewable heating, develop a whole house plan and recommend the most efficient and cost effective ways of upgrading. They will also help you to apply for any available funding www.ofgem.gov.uk/environmental-programmes/eco.

You can find out about green energy solutions such as solar panels, heat pumps and boilers at www.renewableenergyhub.co.uk and www.greenmatch.co.uk. Owners of domestic solar panels and wind turbines can receive payments via the Smart Energy Guarantee www.ofgem.gov.uk/environmental-programmes/smart-export-guarantee-seg.

Information on generating your own electricity is at www.energysavingtrust.org.uk/renewable-energy and you can find out more about air and ground source heat pumps at www.heatpumps.org.uk.

Keep warm, keep green, and please let SEAG know how you get on.

RECIPE: Mushroom Paté en Croute



2 large onions, chopped
2 tbsps olive oil
2 garlic cloves, chopped
250g (9oz) chestnut mushrooms, sliced
225g (8oz) wholemeal breadcrumbs
225g (8oz) ground cashews
225g (8oz) ground almonds
500g (1lb 2oz) puff pastry
2 tbsps soy sauce
2 tbsps lemon juice
2 tsps dried tarragon
1 tsp yeast extract
Soya milk for brushing



Serves 8

- Preheat the oven to 200°C/400°F/Gas Mark 6.
- In a large saucepan, fry the onions in the olive oil for 7 minutes, until tender, then add the garlic and mushrooms and cook for a further 5 minutes, or until the mushrooms are tender. Then tip the mixture into a food processor and blend to a purée.
- Put the ground cashew nuts and almonds into a bowl with the breadcrumbs, the mushroom purée, soy sauce, lemon juice, tarragon and yeast extract and mix well. It will be quite stiff. Season with salt and pepper.
- Roll the puff pastry out on a lightly floured board to make a square about 38cm (15") in size. Transfer the pastry to a baking sheet and heap the mushroom mixture in the centre, forming it in to a loaf shape.
- Make diagonal cuts in the pastry about 1 cm (½") apart on each side of the mushroom mixture, then fold these up over the mushroom paté to make a kind of plait effect. Tuck in the ends neatly, trim off any extra bits and brush with soya milk.
- Bake for 40 minutes, or until the pastry is puffed and golden brown.

Adapted from: *Low- GI Vegetarian Cookbook* by Rose Elliott ISBN 978-0-563-53921-6



JSQ FARM ENTERPRISES

SALES • REPAIR • SERVICE

JSQ Farm Enterprises provide their customers with top of the range products from industry leading manufacturers. In addition to this we also offer a first class after sales service.

We pride ourselves on giving exceptional service and advising on the product best suited to the client's individual needs.

We are based on the outskirts of Princes Risborough and offer sales and repair for all your garden machinery, covering Aylesbury, Thame, High Wycombe and surrounding areas.

Lily Bank Farm Barn
Lily Bottom Lane
Princes Risborough HP27 0RN
01494 489806
www.jsqfarmenterprises.com



The Little Things DO Count

Jeni Fairey

In this area you would be hard-pressed to find anyone who didn't care about the environment. Most of us didn't arrive in an Area of Outstanding Natural Beauty by accident, but were drawn here by the benefits nature brings: clean air; beautiful scenery; space to exercise and the related benefits to mental health.



An added side-effect is that these groups again galvanize our small community, building on the success of the other amazing projects run by local residents of all ages.

We can all do something and everyone's efforts are valid. Even the busiest, most time-constrained of us can play our small part to protect our planet

for future generations, sometimes even improving our quality of life in the process.

Of course we all wish to preserve this planet, however, in the face of the countless frightening reports of climate devastation as well as Attenborough's recent "Extinction" program many of us may be feeling overwhelmed by the scale of the issues humanity faces and powerless to change the behaviours of the huge, most polluting companies.

A by-no-means exhaustive list of little things which we can do to help:

The horrendous effects of Covid have had one silver lining in that highly polluting air traffic has reduced significantly, but the ensuing financial impact must not be underestimated and one thing is for certain: the world will never be quite the same again. A huge transformation is afoot globally but this needn't be wholly negative. If we allow ourselves to rethink some of our behaviours and attempt to reduce our personal impact on the planet we can all be instrumental in helping to restore the balance.

- Cut down on meat and dairy products.
- Talk to children about these issues to ensure they are making educated choices as they grow up.
- Swap to a renewable energy provider (please see our related Home Energy article in this edition).
- Walk or cycle rather than drive where possible.
- Choose foods without packaging.
- Plant trees.
- Recycle packaging.
- Fix broken items rather than dispose and rebuy.
- Work from home.
- Join the village WhatsApp groups!
- Join/ donate to Friends of the Earth, WWF or Greenpeace. Putting your name to their petitions takes seconds but has a great effect and donating helps their work.
- Invest your money into sustainable funds.
- Write to your MP about your concerns.
- Join SEAG and help us raise awareness and help others be informed about the facts.
- Fly less.

In Speen and North Dean some small projects have been gaining momentum. Their effects are difficult to quantify but I would suggest they are having a substantial reduction in our villages' carbon emissions.

SEAG would be more than happy to discuss and if possible help people with information on any of the above. Please do not hesitate to contact any member of the SEAG committee through our webpage on the village website or on seag@btinternet.com.

The "Reduce, Reuse, Recycle" message is still as pertinent as ever and every time someone fertilises their soil with a neighbour's horse's manure; shares a garden implement; asks for and receives an item a neighbour no longer needs, many, many car journeys and production costs are eliminated from the process, thereby reducing carbon emissions.

Other contacts:

Cat Cook's brainchild *Speen Sales and Wants* WhatsApp group has rehomed literally 100s of preloved items and SEAG's *Veg Patch Pals* WhatsApp group continues to grow (excuse the pun!) with people sharing plants, seeds, pots as well as skills and ideas to help each other successfully grow food at home, thereby again cutting carbon costs.

Speen Sales and Wants

Veg Patch Pals

Cat Cook - 07917 775115

Monica Dent - 07511 733199




 Handmade in
**Princes
 Risborough**
 with a **10 Year**
 Guarantee

The beauty of sleep



At Hypnos, comfort comes guaranteed. But whilst each Royally Approved bed is individually handmade by master craftsmen, using the very finest natural and sustainable materials, it is you who carefully designs the look of your bed and creates a majestic centrepiece for your bedroom. So, to be sure that you enjoy a beautiful night's sleep and awake feeling revitalised and refreshed, visit our Showroom and design a Hypnos bed that's just right for you.



HYPNOS
 THE MOST COMFORTABLE BEDS IN THE WORLD

Visit our Showroom: Monday to Thursday 9.00am to 5.00pm | Friday and Saturday 9.00am to 4.00pm

Hypnos Limited | Longwick Road | Princes Risborough | Bucks HP27 9RS

T: 01844 348200 | www.hypnosbeds.com

Alternatively, visit your local Hypnos Retailer:

Aylesbury Lucas Furniture **01296 486255** | **Gerrards Cross** Crystal Carpets & Furnishings **01753 889230**

High Wycombe Beadle Chrome Ltd **01494 523249** | **Thame** Greens Furnishings **01844 212560**

Hypnos is proud to be Carbon Neutral, complying with PAS 2060.

SPREENPLAYING FIELDS

Clare Morris, Chair

It's great to be able to say that all Play Areas and Ridgley's Field are now fully open again with signs are up reminding everyone to 'Play Safe'.

Over the course of the last few months the Playing Fields Committee have been busy maintaining all our facilities, the bike park has undergone an upgrade with a berm and jump created for the older children which has been received enthusiastically.



The corner of Ridgley's Field onto Moses Platt has had the sightline improved with an old hedge taken down, now the one planted four years ago further back has grown sufficiently.



On the main Playing Field, the much loved but rather sad looking and hazardous roundabout has been completely dismantled with the metal frame having been sent off to be repainted whilst all new seats etc are being made. The hope is that the renovated roundabout will last for many more years to come when it is reassembled in the Spring. The toddler multiplay nearby has also been given a new lease of life.

The Autumn socially distant work party resulted in the front of the Pavilion being repainted, only three more sides to go, thanks to all those who turned out to help. It is with great sadness that the Speen Bonfire and Firework display this year has been cancelled but it was not feasible to put on a safe event, following Covid guidelines. We hope next year's event will be the biggest and best yet. Please keep safe if you are planning fireworks in your garden as an alternative this year.



As we have been unable to hold any fundraising activities on the Playing Field the committee and all those volunteers involved with the Playing Field Draw would like to say a huge thankyou to everyone who contributed, either by buying draw tickets or by making donations. As a result, we have had our best draw take up ever. For details of prize winners please check the Speen Website.

Keep an eye out for updates on the lighting of the Speen Christmas Tree in the Village Messenger. Currently scheduled for the 6th December for the usual mince pies, mulled wine, carol singing and charity donations, we'll just have to wait and see how the next few weeks develop. Whatever happens the tree will be lit with donated new lights.

Please do get in touch if you have any queries or are interested in joining the small group of trustees that manage this facility on the community's behalf. My tenure as Chair finishes in February so any volunteers to take on this rewarding role would be gratefully received. Please contact playingfields@speenbucks.org.uk.

Award winning Design

Extension • Conversion • New Build

SQU4RE



Jeremy Symondson
Foursquare Land Limited
Old Smithy, Great Hampden,
Buckinghamshire HP16 9RF
jem@4squareland.co.uk
tel: 01494 488877
mob: 07789 201616

As recommended by the RHS

A Wildlife Pond for your Garden?

Contact Jamie Harland
local Wildlife Gardener
to make one for you.

jamieharlandartwork@gmail.com



VARILUX  clusive™ 4D



EMBRACE EVERY DETAIL OF YOUR WORLD

WITH VARILUX XCLUSIVE 4D BESPOKE LENSES



Varifocal lenses



Close distance



Mid distance



Far distance

GET YOUR BESPOKE LENSES AT LEIGH LEWIS OPTOMETRIST

LEIGH LEWIS OPTOMETRIST

247 MAIN RD, WALTERS ASH,
HIGH WYCOMBE HP14 4TH
TELEPHONE: 01494 564 600

WW1 Pay, War Widows' Pensions, Gratuities

In recent years, the Speen Heritage Group has published a series of articles in the SNDN about each of the 10 lads from the village who were killed in WW1. Several people have asked us questions about Pay, Pensions and such like. These are the simplest outlines we could manage:



Army rates of pay were complicated when WW1 broke out, and they did not get simpler. How much you were paid depended on your rank and the branch of the Army you were serving in. The basic Private in the Infantry received one shilling a day; a Corporal, 1 shilling and 8 pence. Their exact equivalents in a Cavalry regiment of the line received 1 shilling and 2 pence a day and 2 shillings a day, respectively. In the Household Cavalry, the daily rates were 1 shilling and 9 pence and 2 shillings and 8 pence. But in the Royal Flying Corps, men in those same two ranks were paid 2 shillings and 5 shillings a day.

Interestingly, the basic pay of an Infantryman (one shilling a day) could be attractive for a young, married, agricultural worker. It was fixed, not variable. Food, clothing, accommodation with heating and lighting; flushing lavatories and ample hot water for baths and showers were all free. You did not have to pay very much to see a doctor and medical treatment was excellent. And, for those so inclined, there was plenty of sport. Conversely, you put your life at risk.

The Army rapidly developed systems for dealing with common financial situations. A married man, for example, was obliged, by law, to provide money for his wife. There were some false starts, but by 1915, the basic married Infantryman had a 'compulsory stoppage' of six pence a day (3/6d a week). That was increased from Army funds to provide his wife with 15 shillings a week. For each child under the age of 16, there were additional payments per week: 5 shillings a week for 1 child, making 20 shillings (or £1) a week; three shillings and six pence a week for the second, making £1..3..6d; and 2 shillings a week for each subsequent child. An unmarried man might make a 'voluntary allotment' to send money to a dependant relative - typically to his Mother. She would receive 12/6d a week. A mother and a father would have 17/6d. A grandma looking after two children would get £1..3..0d

Widows' Pensions were also complicated. (Initially, Officers' widows did not receive a pension; it was

assumed that they would have sufficient funds to cope. That was soon put right.) In August 1914, the widow of a Private in the Infantry would receive 5 shillings a week – plus 1 shilling and six pence for every child under 16. In 1917 her rate was doubled to produce 10/- per week for herself and 3/6d per week for the first child

under 16, and 2/- per week for every subsequent child. Higher rates were paid for second and subsequent children if the widow was over 35, and an even higher rate if she was over 45. In 1919 the widow's rate was raised to £1..6..8p per week (what a weird figure) plus £1 per week for each child. All these amounts were taxable; the widows of men of more senior rank received higher rates.

The Service Gratuity (of £1 for each year or part year of service) was intended to help an ex-soldier on his return to civilian life. If a Private in the Infantry had been killed, whoever he had nominated as his Next of Kin received a larger Service Gratuity, still based on his years or part years of service - £2 for year 1; £2 for year 2; £3 for year 3 and so on. In 1919, a War Gratuity was introduced. It was also based on rank and years of service and was payable to the ex-serviceman or, if dead, his next of kin. The rates were far higher than those of the Service Gratuity (for a Private, £5 for the first year; £6 for the second and all subsequent years; all calculated on the basis of 10/- per month) but you could not benefit from both. If you, or your next of kin, had received the Service Gratuity, the amount of the War Gratuity was abated. Recently, the amounts paid to the next of kin of our 10 WW1 casualties – and the names of who received them – have become available; we think they are sometimes surprising. A further article is being prepared.

RING ANY BELLS?

Jude Awdry saw this in a national newspaper - does anyone remember this family?

MY HUSBAND'S family lived in Wembley, just outside the wartime evacuation area, but it was still a dangerous place. His father cycled out to Buckinghamshire and found lodgings for his wife and two young children in a small village called North Dean. My husband has so many memories of his time there, even though he was very young. His mum cooked all meals for them on an open

fire, and walked her daughter to school up a long hill, with my husband in his pram. They stayed there for several years until it was safe to go home to Wembley. The family found out later that Dad had taken them to 'safety' at the bottom of the hill from Bomber Command, which was almost certainly a German target!

Pauline Freeman,
Bury St Edmunds, Suffolk.

Martin Holman's Pest Control & Services



Qualified & Fully Insured



NPTA

tomorrow's association
for today's technician



(M) 07510 290321 (T) 01296 622972

ratman01@talktalk.net



@MHPestControl

VILLAGE ENVIRONMENTAL SERVICES DOMESTIC DRAIN SERVICES

Proprietor: Dennis Cook
Est. 1979

BLOCKED DRAINS?

FAMILY RUN BUSINESS SINCE 1979

BLOCKED DRAINS CLEARED

REASONABLE RATES

CCTV DRAIN SURVEYS

NO EXTRA CHARGE FOR EVENING, WEEKEND OR BANK HOLIDAY CALLOUTS

FULL PUBLIC LIABILITY INSURANCE

CALL US DAY OR NIGHT

**24/7
CALLOUT
SERVICE**



07850 635 844 01296 624 221 (MESSAGES)



M. R. COLLINS

GARDEN CONSTRUCTION

Est 1979

Driveway, Paving, Brickwork, Fencing
Groundworks, Excavations, Operated
digger hire.

We specialise in Block paving and all
types of slab laying Indian stone and
concrete offering a start to finish service
inclusive of excavations muck away,
supply and fix.

For estimate Phone: 01844 346360
Mobile: 07774 256732



Briants Ltd
Fencing, Garden Machinery & Forestry Supplies
Of Risborough Ltd
www.briantsltd.co.uk 01844 343663 Thame Rd, Longwick, HP21 9AB

STIHL
HONDA
POWER EQUIPMENT
HAYTER
MAKERS OF THE FINEST MOWERS

**SUPPLIERS OF
FENCING MATERIALS,
GARDEN MACHINERY &
FORESTRY EQUIPMENT**

GREAT DEALS THIS WINTER
UP TO 50% OFF SELECTED LINES. PUBLIC, DIY & TRADE ALL WELCOME

You can now order online for local delivery
www.briantsltd.co.uk or call **01844 343663**

Nick Higgins Forestry & Fencing Contractor

m. 07768 383418
t. 01494 488835

45 Great Hampden Seasoned logs
Bucks available
HP16 9RJ



JOHN BISHOP Est. 1972 GARDEN MACHINERY

Sales & Service



HONDA
LAWN & GARDEN



Machine Hire

Scarifiers, Cultivators, Strimmers, Mowers
Hedge Trimmers

Blade/Chainsaw Sharpening & shear grinding.

We also stock a wide range of parts for various products.

Free Collection & Delivery



Tel No. **01494 563513**
Mob. **07917 106004**

1 Margaret Cottages, Northdean, High Wycombe, Bucks, HP14 4NH



Autumn photo by Martin Hart

Paul's Plumbing
07786 175123

Friendly, Reliable & Local

ELECTRICS & PLUMBING

Electrics . Heating . Plumbing
Problem solving

Electrical inspection & testing • Consumer units
Heating controls • Internal & external wiring
Bathrooms • Kitchens • Taps • Leaks



Based in North Dean.

**Local to Speen, Naphill, Walter's Ash,
Lacey Green, Hampden, Hughenden**

Paul Newman Ltd. 07786 175123 | 01494 565573

WEDDING INVITATIONS **POSTCARDS**

PLACE CARDS **MENUS** **NOTEPAPER**

DATA MERGED LETTERS **NEWSLETTERS** **XMAS CARDS**

MEMBERSHIP CARDS **INVITATIONS** **NOTELETS**

FIXTURE CARDS **TAGS** **POSTERS** **ORDER OF SERVICE CARDS**

PK **gplex**
INPRINT MORE THAN JUST PRINT

DESIGN; ARTWORK; LITHO, DIGITAL & WIDE FORMAT PRINT
Pinstone Way, Tatling End, Gerrards Cross, Bucks SL9 7BJ
T: 01494 452266 • E: mail@pkinprint.co.uk
W: www.gplex.co.uk
Printers of Speen & North Dean News

CONTACT US NEXT TIME YOU NEED A PRINT QUOTATION
doing more with print

CG
Tree & Garden Services

Tree surgery & felling
Fencing
Hedge cutting, topping & turfing
Woodchips & firewood for sale



Free estimates • qualified staff • fully insured

Tel: 01494 562045
Mob: 07798 896380

Coles & Blackwell

Car Service & Repairs
Book online at:
www.colesandblackwell.co.uk

Quality car servicing and repairs much closer than you think!

Where are we ? You will find us 300 metres down the small lane opposite the top of Bradenham Wood Lane in Walters Ash, High Wycombe HP14 4UX

Established in 1959



Servicing
Did you know you can get your car serviced by us without invalidating your manufacturers warranty? Legislation passed a few years ago means that you can now choose any garage of your choice to service your vehicle.

Courtesy cars
We have a fleet of new loan cars at your disposal whilst we service your own car or repair bodywork damage. Best of all - they are FREE OF CHARGE!
All part of the service you come to expect from Coles & Blackwell

air conditioning _____
mot testing _____
vehicle servicing and repairs _____
crash repairs _____
tyres, clutches & brakes _____
computerised diagnostics _____
batteries & exhausts _____

Opening Hours:
Monday to Friday 7.30am to 5.30pm

01494 563102

WHO'S WHO

Bucks County Council - Member for Lacey Green	Carl Etholen	01494 564771
Hughenden Parish Council - Chairman	Roger Beavil	01494 715296
Lacey Green Parish Council - Chairman	Cathryn Davies	01844 342800
Lacey Green Parish Council - Councillor for Speen Ward	Roger Craft	01494 488343
North Dean Village Hall - Chair	Dick Pooley	01494 269615
North Dean Village Hall - Bookings	Jeremy Mudie	07880 785983
North Dean Village Fete	Jez Wicks	01494 563517
Pigotts 7 '48' Musical Evenings	Nick Wheeler-Robinson	01494 562167
Riding for the Disabled	Gloria Holmes	01494 488420
Speen Good Neighbours	Pat Richardson	01494 488627
Speen & North Dean Guides	Pauline Hall	01494 488372
Speen & North Dean News - Advertising	Tom Dent	01494 488943
Speen & North Dean News - Chair	Gloria Holmes	01494 488420
Speen & North Dean Toddler Group	Natasha Kann	07737 638618
Speen Baptist Church - Church Administrator	Sandy Mitcheson	01494 488875
Speen Environmental Action Group (SEAG)	Jane Farley	07889433630
Speen Festival	Cat Cook	01494 488939
Speen Fete - Chair	Clare Morris/Helen Davies	01494 488553
Speen Helping Hospices - Secretary	Maureen Laing	01494 488397
Speen Heritage Group - Chairman	Peter Symonds	01494 488016
Speen Marquee	Greg Cook	01494 488939
Speen Playing Fields - Chair <i>playingfields@speenbucks.org.uk</i>	Clare Morris	01494 488553
Speen C of E Infant School - Head	Jacquie Coles	01494 488321
Speen School PTA - Chair	Cat Cook	01494 488939
Speen Stores	Alison Templeman	01494 488258
Speen Tennis Court - Secretary	Philippa Lane	01494 488453
Speen Village Hall - Bookings	Sue Taylor	01494 488500
Speen Village Hall - Chairman	Bill Groves	01494 488180
Speen WI - Secretary	Jenny Pearce	01494 562333
St John's Parish Church	Rev'd Tony Bundock	01844 347741
Wycombe District Council - Member for Lacey Green & Hampdens	Cllr. Graham Peart	01494 488327

BEECHDEAN

Farmhouse Dairy Ice Cream



Now available from
Hughenden Village Store and Coffee Shop

• 130ml Beechdean Farmhouse 'Spoon in Lid' Tub •
Vanilla, Double Chocolate, Strawberry, Salted Caramel, Mint Choc Chip,
Honey & Ginger and Lemon Sorbet

Special Offers Available in-store!

- 1 Litre Beechdean Farmhouse Tub •
- 2 Litre Beechdean Farmhouse Vanilla Tub •

Hughenden Village Store and Coffee Shop
Coombe Lane, Hughenden Valley, High Wycombe HP14 4NX

 @HughendenValleyShop1



  
@BeechdeanGroup



Opening Hours: Monday to Friday : 7.30am – 6pm, Saturday : 8am – 4pm, Sunday : 8am – 3pm

A photograph of a garden path leading through a rose archway. The path is made of light-colored gravel and is bordered by a low, neatly trimmed green hedge on the left. The archway is covered in dense green foliage with many red and white roses. In the background, a white building with a glass door is visible through the trees.

Homes of Distinction

If you are looking for a very special property or have one that would benefit from our award winning marketing then we are ready to act on your behalf.

01844 343131
Princes Risborough Office

01494 711677
Hazlemere Office

FINE & COUNTRY
fineandcountry.com™