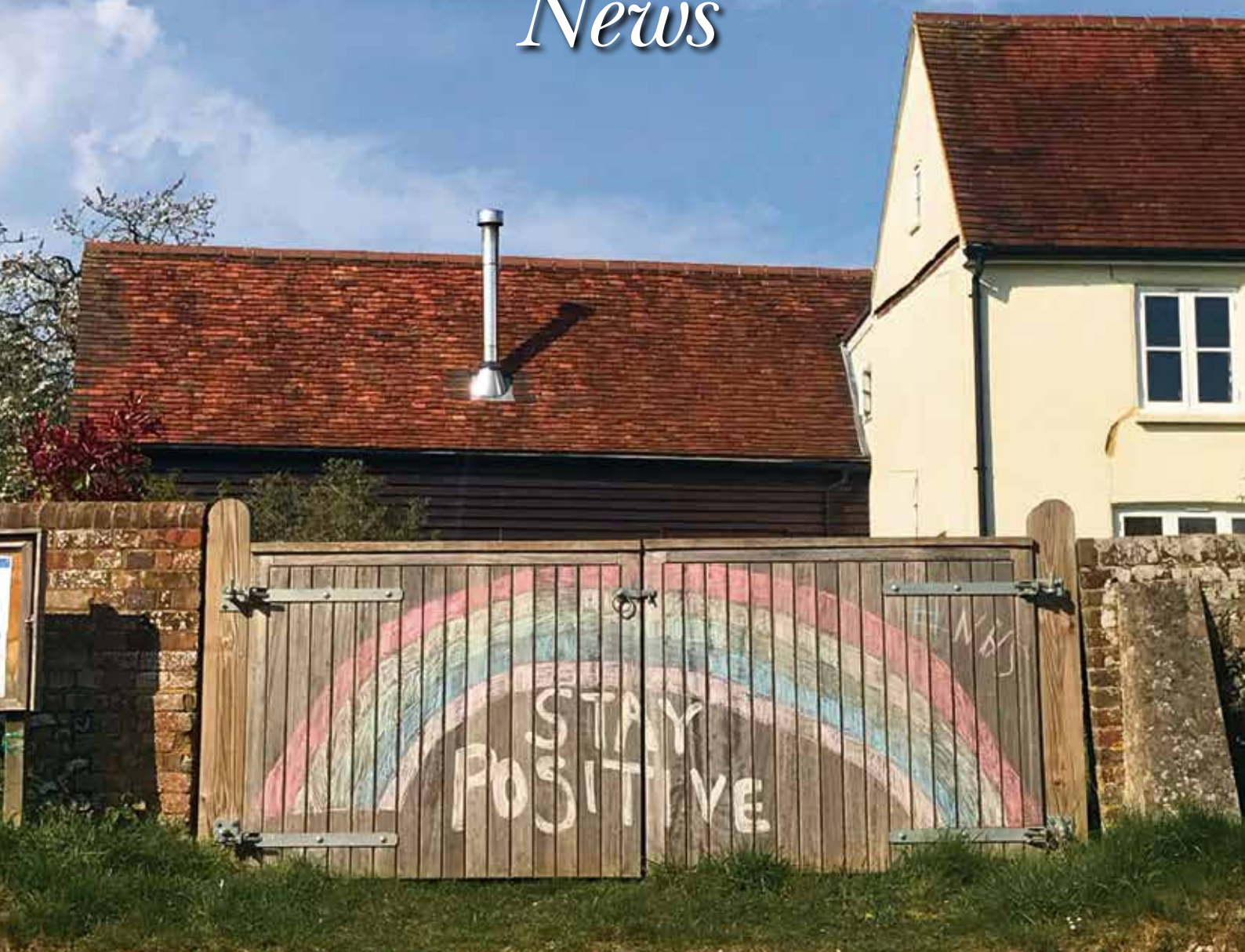




Summer 2020
Issue 78

THE SPEEN & NORTH DEAN *News*





simply
beautiful
gardens

Alchemille has been designing and creating beautiful, innovative, inspirational outdoor spaces since 2004. From urban courtyards to country estate gardens, we can make the simply beautiful garden of your dreams a reality.

FROM CONCEPT TO CREATION

01494 488072 • 07909 936718 • design@alchemille.co.uk

www.alchemille.co.uk

Get smart in **your** garden

From comprehensive plant care advice, to regular maintenance or a one-off project, our experienced team is ready to smarten up **your** garden.

For more information contact
Andy Merriman on

07827 290770



Working in association with Alchemille Garden Design

nbucks.org.uk

Welcome!

to the Summer edition of
The Speen & North Dean News.

I hope everyone has stayed safe and well - it's been wonderful to see how both villages have found positives during such a worrying time, and in true community spirit have been looking after and caring for one another. Neighbours have been looking out for neighbours, the WhatsApp groups have been an invaluable tool of communication and support, the Village Messenger has been keeping us up to date with all the latest developments, Speen Stores have done an outstanding job and have been an invaluable hub for the community, Chapel Hill Kitchen has been busy sending out regular food parcels to those self-isolating, the School has quickly embraced adapting to distance-teaching, the WI have been busily sewing laundry bags, and Speen Helping Hospices have raised an incredible amount of money for their charities, making and selling masks amongst other things.

What a VERY special place to live!

Enjoy the bit of extra freedom we are now benefitting from, stay safe and well.

Jacqui



*The view of the changing seasons from Sarah Booth's house
in North Dean - January to early June.*

Next Edition

Copy for the next edition is **due by 20th October** with a planned publication date of early November. Please send photos separately from text, together with captions and a consent form (downloaded from the SNDN website www.speenbucks.org.uk) if any photos are of children. Please send to editor.sndn@speenbucks.org.uk.

With grateful thanks

To Hughenden Parish Council, Speen Festival, Speen Fete, Speen Stores Charity Committee, all our advertisers for their support of this magazine and all the volunteers who deliver it to your door.

Welcome Packs

The Good Neighbours scheme was set up many years ago and is now run by Pat Richardson in Speen. The service is to provide new Speen residents with a Welcome Pack of village information, so if you know of anyone new to the area please call Pat Richardson on 01494 488627.

Village News

If you are not already signed up to The Village Messenger do email Village@SpeenBucks.org to be put on the mailing list, with the word 'include' in the subject line - they will keep you up to date via email on a monthly basis with all the latest village news and dates for your diary.

HOME REARED MEATS,
LOCAL PRODUCE
& HOME COOKED FOOD



Free Home Delivery
within 2mi | 2mi-3mi £2
Wednesday - Friday

Chequers Estate | HP17 0UT
SHOP Wed - Fri 10 - 6 & Sat - Sun 10 - 4
KITCHEN Sat - Sun 10 - 4
www.buckmoorendfarm.co.uk

Lloyds Wines



- Local supplier of high quality, rare and affordable wines from France, Italy, Spain and Portugal
- Free delivery
- All events catered for
- Supplier to The Hampden Arms and The Gate
- Sole UK importer for many regional wines never seen before in the UK
- 20 years experience sourcing from the best small growers
- Wine and Spirit Education Trust qualified
- Authorised wholesaler
- Personal and premise licensed



lloydswines.com sales@lloydswines.com 07547 645917

THE PAINTED KITCHEN COMPANY



PK
PAINTED KITCHENS.ORG

A: 5-7 DUKE STREET, PRINCES RISBOROUGH, BUCKS HP27 0AT
M: 07768 975 323 • T: 01844 346444 • W: PAINTED KITCHENS.ORG

In Praise of our SNDN Community

We appreciate all the efforts of so many people during these difficult times. I would like to thank all those who have worked hard to bring this magazine to your doorstep, completely free of charge.

Firstly, our Editor, Jacqui, who brings her creative skills and expertise to the fore, then Tom, the financial wizard, who balances the advertising to enable the production to come at no cost to the reader. Let's hope that they will continue to spread the good news to our community.

Two of our original members of the team have now decided to retire. Megan Chinn from North Dean and Nick Wheeler-Robinson from Pigotts have been very valuable committee members. We would like to warmly thank them for their contributions over many years.

There are a number of individuals who volunteer to deliver the magazine to you 3 times a year. Some have delivered all 78 issues. So to Jo Banks, Jenny Cowan, Jenny Green, John Codling, Tom Dent, Maureen Laing, Pat Richardson and Vera Lennard, a very big THANK YOU to you all.

Gloria Holmes

Note from the Editor:

And a huge thank you to you too Gloria - we absolutely couldn't do it without YOU!



Contents

The Future of Speen Stores	6
Speen Helping Hospices	7
Speen C of E School & Little Apples PreSchool	9
Speen Church	11
North Dean Memorial Village Hall	13
Speen WI	15
Lacey Green Parish Council	15
Risborough Community Bus	17
Speen 'n' Dean Beer & Wine Tasting	19
Wildlife Watch	21
Speen Spring Clean and Collect	22
Beechdean Down on the Farm	23
Short Story Competition	23
KWIV Update	25
Speen Heritage Group	25
Speen Environmental Action Group	27/29
Speen Playing Fields	31
Great British World of Sport	31
Speen Heritage Group VE Day	33
Who's Who	38

List of Advertisers

A Cut Above, Alchemille Garden Design, Andy Ellis Tree Surgery, Ashridge Home Care, Aston Hearing, Beechdean Farmhouse Dairy Ice Cream, Briants of Risborough Ltd, Buckmoorend Farm Shop and Kitchen, CG Tree & Garden Services, Coles & Blackwell, Foursquare Land, Fraser Morgan School of Dancing, Heppelthwaites, Hypnos Beds, Jamie Harland Wildlife Gardener, JNP, John Bishop Garden Machinery, JSQ Farm Enterprises, Leigh Lewis Optometrist, Lloyd's Wines, Martin Holman's Pest Control and Services, MR Collins, Nick Higgins Forestry and Fencing, The Painted Kitchen Company, Paul Newman Ltd, PKInPrint, Rowena's Therapies, Speen Pilates, Springline Cars, The Burnside Partnership, The Harrow Pub, The Smart Garden Company, Tudor Travel, Universal Care, Village Environmental Services.

If you use the services of any of our advertisers please do mention that you saw their ad in The Speen & North Dean News

THE FUTURE OF SPEEN STORES & POST OFFICE

Call to Action Update

For those of us who are privileged to live in Speen, North Dean and the surrounding environs, Speen Stores has, as always, continued to demonstrate real value to village folk in these challenging times. Bob, Ali, Connie and Ian have been in overdrive serving the community, keeping us well stocked up, connected and safe.

However, sadly all good things do come to an end. In March, Bob and Ali Templeman who have run the shop for the past 12 years, announced in a letter to villagers that the current lease on the shop premises, owned by Bucks Housing Association, will come to an end in September 2021.

In normal times, a meeting could have been convened with villagers to debate future options, but this has not been possible. Consequently, a group of four villagers, the Speen Stores Crusaders, decided to gauge the temperature of residents about options for the future of the shop. This has become all the more urgent with the departure of Ali later in the summer.

A letter was circulated with the Village Messenger in May in which ideas regarding the shop were invited. As of 14 June, 70 responses had been received, which roughly equates to 30% of local residents, for which we are grateful.



The majority of responses are overwhelmingly in favour of the retention of a shop and Sub Post Office.

The Speen Stores Crusaders have analysed the responses and this analysis was circulated with the Village Messenger on 2 July. We have set up a Working Group to take the project forward and villagers will be kept informed of developments.

Any questions should be directed to
speenstorescrusaders@gmail.com

HELEN & DOUGLAS HOUSE

One of the charities supported by Speen Helping Hospices

The day your child is born should be one of the happiest of your life and the days, weeks and months that follow full of absolute joy. Sadly, our reality was somewhat different and not what we had been planning for the past 10 months.

When our second son, Finley, was placed upon me, I instantly knew something wasn't right. I could tell from the way he looked and behaved that something was wrong and was no way prepared for our little world to come crashing down around us like it did. To our complete shock we were told that our beautiful boy had been born with a rare, life-limiting genetic disorder known as Schinzel-Giedeon Syndrome. As a result, Finley has a number of medical issues including sight and hearing impairments, seizures, skull and body deformities and is fed through a gastrostomy.

Myself and my husband David have been caring for Finley since birth and are still getting used to a very different way of life. Fortunately for us we are able to spend time at Helen and Douglas House in Oxford. The children's hospice



Playing in the garden after a delicious Father's Day lunch

provides us with much needed family respite several times a year. When there, Finley is cared for by a team of amazing nurses and doctors in the and caring and peaceful environment. This means that myself, David and our eldest son Danny are able to relax, enjoy home cooked meals, catch up on much needed sleep and most

importantly spend quality time together without the daily worry and pressures of caring for Finley.

As a charity Helen and Dougal House rely heavily on donations and public support. We would be devastated and at a complete loss if this tranquil little haven was no more. Myself and my family are so grateful to everyone who has helped to donate and raise money for this incredible charity. Never in a million years did we expect to find ourselves in this situation but with the support of Helen House we are able to manage Finley's condition and enjoy what time we have with him.

Please help my family and other families who face every parent's worst nightmare by continuing to give generously.

Lauren & David

SPEENHELPING HOSPICES

Grainne Suter

Well, we have all been through quite an eventful time over the last few months! We were very concerned about our ability to fundraise as all events were cancelled. But despite all we have, with your support, raised over £7,835. This is truly wonderful and we are very relieved to have come through lockdown with a healthier bank balance than expected.

All the committee have been involved in the fundraisers but special mention needs to be made to Ann James, Maureen Laing and Christine Davies for producing the face masks. This initiative raised £4,400 - and that's a lot of masks! Our thanks also to Jeanne Hansford and Gill Biffa, who dusted down their sewing machines when demand was at its highest. When we had run out of customers in the village, advertising in Hallmark opened up a new source of custom in Lacey Green and Loosley Row. People in Ireland, Scotland, Staffordshire and Lancashire as well as Berkshire, Bedfordshire and Bristol are now suitably attired to go on public transport, visit the GP surgery and shop safely. Many thanks also to those of you who threw in the extra odd £5 and £10 notes. Much appreciated! We will continue to make masks whilst there is a demand. Please call 07778 803260 if you want to place an order.

Recognising the challenge we were facing, Joanna Brownridge, a very well-known landscape artist, donated one of her paintings to SHH for us to raffle. Joanna won first and second place in the Buckinghamshire Art Society People's Choice Vote Spring 2019 and Artist of the Year 2019 West Wycombe Art Group. Joanna donated one of the winning paintings for our fundraising raffle. "Mist" was

won by Liz Dawson who used to live in Turnip End. The framed print went to Valetta Brown. The tickets were £25 each. All ticket purchasers received a signed A3 size print of the picture signed by the artist, produced by well-known photographer and jazz player Martin Hart. This initiative raised £3,125. Thank you to Joanna and Martin. Some people who had bought tickets for the Spring Lunch donated their ticket money when the event was cancelled, thus taking us to a grand total of £7,835 for this year.

We are so grateful for your support, as we know that you will also have been supporting your own pet charities during this period. All charities are facing funding challenges, but hospices get so little government funding and are hugely dependent on voluntary contributions.

The act of fundraising normally gets the attention, the impact that it has on individual and family lives is often unknown. So, on the opposite page we are very grateful to local family Lauren and David for their very poignant article. Sharing their experience gives us an insight into how Helen House for Children supports families. This helps us all to understand why we in SHH need to do what we do and how you, by your contribution, are enabling a quality of life for adults and children with life limiting conditions.

Future events

Planning events at this point is difficult however, we will run the Christmas Market on the 14th November and we will be out carol singing in December. Hopefully, we can arrange a musical event in the near future.



Selling beautifully made masks.



Grainne Suter and artist Joanna Brownridge viewing MIST. Photo by Martin Hart.

And just to remind you of our purpose...

SHH is a small charity run by a group of committed women from Speen and North Dean to fundraise for four local hospices - Florence Nightingale, Rennie Grove, South Bucks Hospice and Helen House, the hospice for children in Oxford. The hospices provide a range of palliative and end-of-life care services to people in Buckinghamshire, Oxfordshire and south Bedfordshire. The hospices receive limited funds and are increasingly reliant on local support from communities like ours to continue to provide the specialist care of inpatient and day hospice services. We keep overheads down to an absolute minimum to ensure that the money raised goes directly to the charities.



TUDOR TRAVEL

Taking you there in style



**Providing luxury transport
for the local area**

Five and eight seat MPVs

22-34 seater midi-coaches

Group trips, corporate events, days out

Local and long distance

Fully insured and licenced

Private & business accounts welcome



01494 488887 / 07771 881245

info@tudortravel.co.uk

www.tudortravel.co.uk

SPEEN C of E SCHOOL & PTA

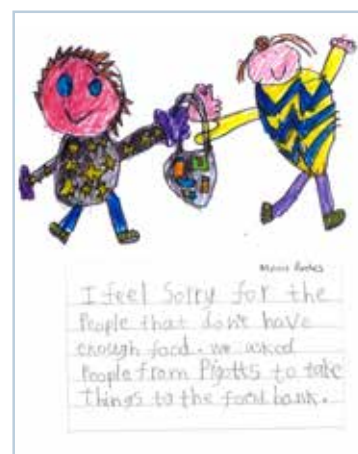


The Covid-19 pandemic certainly seemed to turn our everyday lives upside down very quickly! For schools, life suddenly became a new journey of setting online learning for pupils. For parents, they were suddenly expected to become their child's teacher. Homes needed to be turned into offices and school areas of learning.

It was quite odd not seeing our pupils and their families on a daily basis and having to rely on electronic communications between school and home. We missed seeing the children's faces and listening to their chatter. We missed seeing their families at the beginning and end of each day too. Speen teachers and parents had to quickly gain confidence in using a whole range of different IT skills! Parents very quickly gave us positive feedback when teachers learned how to put video and audio to their PowerPoints. 'It's amazing' they said 'how much my child sits up and listens to their teacher, when they didn't listen to me when I tried to explain it!'

During lockdown we encouraged the children to show our values of care, courage, respect, responsibility, family and honesty through acts of kindness to others. Here are just two examples of how our children helped people in their community during lockdown.

Jacquie Coles, Headteacher



It has definitely been a term like no other at Speen School and Little Apples Pre-School. Just as anticipation was mounting for the Mothers' Day Assembly and the ever-joyful annual rendition of 'SuperMum', the school was forced to shut due to lockdown and concerns over the spread of Covid-19.

With incredible agility and focus from the staff, by the following week the children had resources and access to online learning, homeschooling was launched. As all families tried to juggle the new regime, our sanity was saved by glorious weather and our amazing surroundings. Every outing became Forest School, every game of football in the garden was PE and even art didn't seem quite so daunting when it could all be done outside. However, we quickly slipped into the Easter holidays - but this year without our usual Easter Egg Hunt.

Other annual events were victims of the circumstances, with all planning for the Summer Ball ceased we also lost our greatest



fundraising event. With no country dancing to practice or tombola to ready for the Speen Fete, the term lost its usual high notes.

When the government announced the return of Reception and Year 1, our little school managed to go one step further. It was a huge achievement that Mrs Coles and the team enabled the return to school for Year 2 as well. Even Little Apples were able to return part time which was particularly important for those moving up into Reception in September. Of note, Speen School was the ONLY school in Buckinghamshire to achieve 100% attendance at any point; testament to the faith and assurances felt by the parent population that the school was able to comply with the myriad of regulations to keep the children, and our community safe.

With lots of young families in the village and a growing reputation for what Speen School offers, pupil numbers are looking healthy for new starters in Reception and the pre-school.

Cat Cook, PTA Chair



FRASER-MORGAN SCHOOL OF DANCING

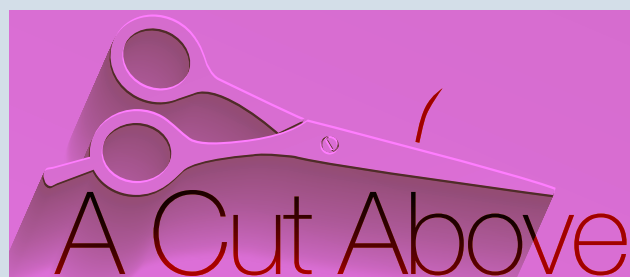
***** Naphill Village Hall *****

RAD BALLET for ages 3+



For more information
please contact
01494 816539 or
07974 121081

ROYAL ACADEMY OF
DANCE
REGISTERED TEACHER



Have you discovered
your local salon yet?

A Cut Above is situated in the heart of Speen village with easy parking. A unisex salon with a warm family friendly atmosphere.

Chris Stiles and Cathy Wardle are experienced professionals providing cuts, colour, styling and hair care advice at an affordable prices.

For appointments: **Salon 01494 488 899**

Chris 07789 115 942 | Cathy 07753 858 611

A Cut Above, Over Speen Stores, Chapel Hill, Speen, HP27 0SL

We hope to see you soon!



ROWENA's

(MCThA) (AoR)

NHS Register of Approved Reflexologists
Karuna & Reiki Master

Aromatherapy
Caci non-surgical face lifting treatments
Reflexology
Aqua detox
Indian head massage
Acupressure massage
Energy healing

Treatments carried out in
home based salon in Bryants Bottom

Call Rowena for more information
or a free consultation

Tel: **01494 488430**

Mob: **07855 848261**

rowena.j.templeman@gmail.com

Celebrating Community & Continuity amidst the Pandemic

Gatherings were prohibited, graduations were cancelled and weddings postponed. Amid the virus, there was no time for assemblages of joyous celebration.



VE Day was one of those moments that just had to be celebrated. Unable to invite that generous generation to celebrate together at the chapel, over 100 individual celebratory parcels were delivered to their homes as a sign of gratitude.

Speen Baptist Church has strived to keep its prophetic presence in the community by trying to maintain and celebrate some sort of continuity during this pandemic.

Chapel Hill Kitchen, though not open to all as usual, has been able to offer regularly a hearty meal for twenty or more of the elderly and self-isolating in Speen and surrounding villages.



With Easter gatherings to celebrate Jesus' death and resurrection cancelled, an Easter Garden was set up in the grounds of the chapel. There visually visitors could reflect on the cross, place flints at its foot as they prayed and looked into an empty tomb to remind themselves that Jesus is Risen.



So we reached Pentecost - another moment when the Christians pause to rediscover their identity - which was once again celebrated with banners in the windows and icons in the grounds where people came just to sit and remember.

So in the midst of the pandemic Speen Baptist Church has strived to offer and celebrate normality in these abnormal times as a sign in anticipation that better days would return. Hoping that the sounds of festival celebration would once again be heard and that social life would resume its social richness. Envisioning a better future.



I hope that as restrictions are eased we will be able to invite you to celebrate community with us and give thanks to the Lord whose love endures forever.

Award winning Design

Extension • Conversion • New Build

SQ4RE



Jeremy Symondson
Foursquare Land Limited
Old Smithy, Great Hampden,
Buckinghamshire HP16 9RF
jem@4squareland.co.uk
tel: 01494 488877
mob: 07789 201616

As recommended by the RHS

A Wildlife Pond for your Garden?

Contact Jamie Harland
local Wildlife Gardener
to make one for you.

jamieharlandartwork@gmail.com



EYEZEN™ LENSES RANGE: DESIGNED FOR A CONNECTED LIFE.

YOUR PATIENTS SPEND A LOT OF TIME LOOKING AT SCREENS.

Smartphones, tablets, computers and TV are now an indispensable part of their lives, to socialize, inform, learn, educate, work, play, relax and see the world.

4

DIFFERENT
DIGITAL DEVICES

used on average for work,
education and leisure.*

2
OUT OF
3

use a smartphone daily.*

64%

of people spend 4 HOURS OR MORE
on a computer per day.*

- EVEN WHEN PEOPLE RELAX IN FRONT OF SCREENS, THEIR EYES NEVER STOP WORKING -

*Consumer quantitative study - 4000 individuals - US, Fr, Br, CH (Br & CH: online representative) - Independent Institute - 2014.

LEIGH LEWIS OPTOMETRIST

247 MAIN RD, WALTERS ASH,
HIGH WYCOMBE HP14 4TH
TELEPHONE: 01494 564 600

NORTH DEAN MEMORIAL VILLAGE HALL

Dick Pooley, Chairman

As the new Chairman of the North Dean Memorial Village Hall Committee, my very first job, on behalf of all villagers, is to thank our previous Chair, Alison Kent, and Committee members Anthony Palmer and Craig Watson, for all their hard work and efforts over the last four plus years. All three have put in a huge amount of time and energy, and it goes without saying that we should give them a "virtual" round of applause. Hopefully we can do the real thing in a few weeks! I am pleased to report that both Anthony and Craig are still going to help on an ex-officio basis, with e-mailing and our "www.northdean.org" website etc. etc. The remaining current committee members should also be thanked for their time, and I look forward to working with them in due course.

At this unprecedented time we still need to plan for future events and occasions, and with that in mind we will start to put some ideas together and formalise a "Calendar of Events" as far as possible, so that folks have plenty of notice of what is intended.

After a very successful "Rock the Hill 2" last year, it was going to be the return of the Village Fete on August 15th. However with the uncertain virus situation, we have postponed this popular event until August 2021. Instead we will hope to organise an "All are Welcome Village Party" at the Village Hall, in the form of a hog roast, music and drinks; so please watch this space for the date and further information.

I am also keen that we continue both the Golf and Cricket competitions versus Speen, but again until restrictions are lifted, we cannot set dates or venues. If there is anyone new to our Village or who would like to play in either of these competitions, then please contact myself for the golf, or Jeremy Mudie for the cricket.

The Village activities are for ALL of us, so please feel free to make positive suggestions and I assure you, we will try and accommodate where possible.

We did manage to hold the annual "North Dean Sunday Lunch" on the 15th March, just before lockdown, and this was once again well attended. We had to run a "meals on

wheels" service for some families who were already self isolating and this was well organised by Kerry White.

The now "regular" chefs of Melinda Pooley, Geraldine Luckett, and Karen and Jeremy Mudie served up a superb lunch of roast pork and all the trimmings, and Judy Keen made a very tasty sticky toffee pudding which complemented the first course.



Finally, apart from many folk in the Village taking part in the regular Thursday "Clap for the NHS" the only other activity has been a dedicated work party of six, on 28th June spending three hours clearing all the weeds from our village hall playground in readiness for the future opening. Approximately eighteen builders bags of weeds were filled!



Please stay safe and well.

Dick Pooley
email: richardpooley5@gmail.com



Chocolate Peanut Butter Banana Bites
Another tasty recipe from the Speen Environmental Action Group.

Peel bananas, cut in half, then lengthways.
Spread on a layer of peanut butter then add crushed peanuts.
Dip in/pour on melted chocolate (or vegan chocolate) and cool on a wire rack
Easy peasy. Store in freezer or fridge.



Photo credit: @fivesechealth

Speen Pilates

STRETCH • STENGTHEN • CONTROL



BOUTIQUE PILATES

TRANSFORM YOUR FITNESS

Pilates can address structural imbalances, pain and difficulty with movement. It aims to enhance your posture, strength and flexibility, body tone, stamina and general fitness whilst releasing unnecessary tension.

ONE TO ONES ON STUDIO EQUIPMENT

One to one tuition offers accelerated learning and improvement, the Reformer uses spring loaded weights to improve your posture, strength and stamina leading to a toned body.

SMALL GROUP MAT CLASSES

Monday and Tuesday at 9.30am and 6.30pm

Thursday and Friday at 9.30am

I also offer bespoke classes for groups of up to 6 friends!

More details on the website
Booking essential

★ ★ ★

The Studio at Midmede, Chapel Hill, Speen

Amanda 07733 307475

amandapilates@btinternet.com

www.speenpilates.co.uk



www.speenbucks.org.uk

Speen WI met in March – and then came lockdown! Like all other organisations this curtailed our activities locally, within the County and Nationally with all events and meetings having to be cancelled. All plans for our big Centenary year on hold.

But then came a call from Buckinghamshire NHS Trust to the Buckinghamshire WI Federation Office asking if WI members could make Laundry bags.



Gill Biffa with some of the laundry bags she made

NHS Staff need to remove their scrubs at work, then place them in a fabric bag so the bag and its contents can be washed at 600 C. This prevents cross contamination. Speen WI members and friends rose to the challenge producing around 130 bags in two weeks. All those unused and unwanted sheets, duvets and pillowcases were brought out of hibernation, workboxes were raided for cord and tape for the drawstrings and sewing machines around the village roared into action. Although in lockdown, the social interaction that incurred was terrific, asking friends, neighbours and relatives for suitable materials and getting them to the 'sewer'. It felt very rewarding to be able to help our hardworking NHS

Staff and others in this way. Our thanks go to Pastor Tim Deller who kindly delivered Speen's contribution to the collection point in Princes Risborough.

In total Buckinghamshire WIs produced 3,000 bags and had to ask members to stop as the local NHS Trust had such an amazing supply for their staff. But they were not wasted as they were given to other neighbouring Hospital Trusts. Some have also gone to individual Care Homes, GP practices, Community Nursing Teams, Health Visitors, Community Midwives and Therapy staff. All the bags have gone to good homes where they are greatly appreciated. Thank you to everyone who was able to participate in this very worthwhile community activity.

The WI has a history of community involvement, from helping with school reading, tea parties for retired people and meals on wheels to litter collection. Speaking of which, it is expected that the Annual Clean Up will be able to happen in the Autumn this year.

WI members have also pledged to try and help with the future of the Village Shop, as this provides such a valuable resource and meeting place for everyone. It is in line with a National mandate for action to save local shops and High Streets which came from a resolution about 6 years ago.

Although we have kept in contact through e-mails and phone calls things are very different for everyone. We are hoping that we can begin to get together as a group again, albeit outside and socially distanced, as like most groups we are missing the face to face contact, the fun and the friendship that WI brings to its members. How fortunate we are to live in this supportive village environment.



LACEY GREEN
PARISH COUNCIL

Lacey Green Parish Councillors for Speen – Roger Craft and Philip Suter

Parish Council Meetings During Covid

Lacey Green Parish Council has been meeting via Zoom for the past three months and will continue to do so until it is safe to have normal meetings at Speen or Lacey Green Village Halls. Agenda and minutes of meetings will continue to be published on the Parish Council website. If you would like to make comments on any items on the agenda, without attending remotely, then as always, we will accept written submissions.

Please contact the Clerk at clerk@laceygreen-pc.org.uk to request an invitation to join virtual Council meetings.



A different kind of care company – providing around the clock care in your own home.



Our care company can help maintain your independence whilst being supported by our professional carers in your own home.

We provide care for people in many different situations. For those with a specific health condition or sometimes for people who simply don't feel safe alone anymore and want somebody with them for peace of mind and companionship.



Ashridge Home Care is a Buckinghamshire based business with over 30 years' experience in care. Our ethos is based simply on providing the type of service that we would want for our own loved ones.

Call us today | 01494 917 344

Email | info@ashridgehomecare.co.uk

Find us online | www.ashridgehomecare.co.uk

RISBOUROUGH AREA COMMUNITY BUS

Peter Johnson

Many of you will have seen the green Risborough Area Community Bus in and around Princes Risborough and in Speen. Until March 22nd we were running a "hail & ride" daily scheduled bus service in Princes Risborough and to the outlying villages, including Speen on Tuesday mornings.



Since March 22nd however, when lockdown began, we have been assisting the Risborough Basket scheme. The scheme was set up by Princes Risborough Town Council in association with Retail Revival Ltd to provide food and other essential items to those in lockdown

The bus service was set up back in 2010 to fill an expanding gap in local bus services. Our passengers, many of whom are elderly and lonely, really appreciate what we do. The bus is a lifeline to shops, surgeries, the library and other amenities in Princes Risborough that for many would be inaccessible were it not for our service; it also provides a link with commercial services to Aylesbury, High Wycombe and Thame. Moreover, many stay on the bus for multiple routes to seek companionship. We pride ourselves on the social value we offer and we estimate that our passengers bring £1½M into local businesses each year.

RACB is an all-volunteer service with one 15-seat bus and 30 drivers. All our drivers are fully trained using the Community Transport Association's Minibus Drivers Awareness Scheme. We hold the Community Transport Association's Quality Mark, and we are seen as an exemplar community bus service within and outside Buckinghamshire, priding ourselves on our professionalism. In addition to our daily scheduled service, we offer twice-monthly outings to places of interest and allow the use of our bus and drivers to non-profit making groups outside of scheduled running time. Last year, we carried 21,120 passengers on our 6 scheduled routes and a further 751 on various outings.

whilst helping local shops survive the loss of normal business; there are now 25 High Street business taking part. Initially, the scheme served just the town area but use of our bus allowed expansion to the outlying villages. Each weekday we collect goods from the Princes Centre in Risborough and deliver to Longwick, Bledlow, Bledlow Ridge, Saunderton, Lacey Green, Loosley Row as well as to Speen, North Dean and Great Hampden. How long the scheme will go on for is open ended but eventually we will return to our normal service.

On July 19th we celebrated our 10th Anniversary. During those ten years we estimate that we have carried well over 200,000 passengers with just the one bus – quite an achievement. To thank our passengers for their loyalty, we had planned to put on afternoon tea for as many of them as possible. Regrettably, of course, that idea had to be shelved but thanks to sterling efforts from members of our management committee we organised tins full of afternoon tea items and delivered them on the 19th to nearly 100 of our passengers.

Restarting our scheduled services will not be easy but we are keeping options for restarting under constant review. When we do restart we hope to see more Speen passengers on Tuesday mornings enjoying the wonderful woodland views through Green Hailey and Kop Hill on their way to the delights of Risborough shops and cafés.



DIAMOND WEDDING GATE

John and Gloria Holmes visiting their new gate in Water Lane, provided by them as a contribution to the community, to mark their Diamond Wedding Anniversary, and 40 years in this wonderful village. And here's a lovely lockdown tapestry project, started by Gloria 30 years ago before she got busy breeding and training guide dogs, and recently kindly finished by a friend in the village.



For all your Family's Ear and Hearing Concerns



Amersham . Princes Risborough . Thame

www.astonhearing.co.uk

01494 733840



Look out for our monthly
FREE FAMILY HearToday EVENTS
www.astonhearing.co.uk/heartoday



SPEEN'N'DEAN BEER & WINE TASTING

Craig Watson



The team who set up and administer the Speen and North Dean Covid-19 Buddy Group had an idea to organise a Virtual Beer Tasting evening, and following the success of that event, a follow up wine tasting evening a month later. There is a strong community spirit in this neighbourhood, with many people regularly socialising together, but as social gatherings were not permitted at this time, we wanted to lift local spirits and bring people together online.

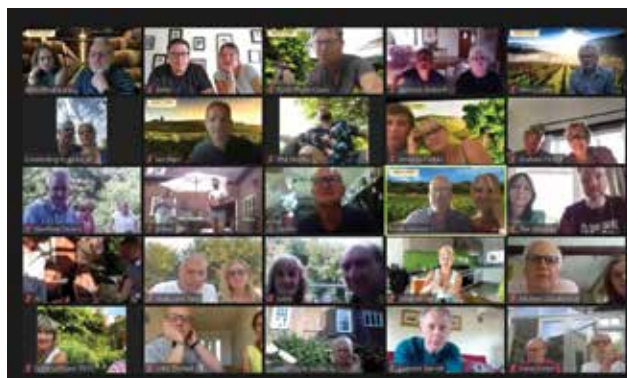
For each event WhatsApp invitations were sent out, an Eventbrite page was set up for ordering, and part of the ticket price included a donation to the One Can Trust. Andy Thompson was Technical Director, hosting the meetings via Zoom, and he broke participants into smaller groups, moving them around in a pub 'safari' for each tasting.

For the Beer Fest, guests could order a selection of 4 different beers from Chiltern Brewery, who delivered to a central location and the orders were distributed



to individual houses by the Buddy Group. There were six hosts, who had the beer tasting notes and kept conversation going. There was also an online poll or two sent to individuals across the course of the evening. Jo Allen was host at The Captain Haddock, Matt Davies was host at The Prince of Wales, Scott Thorn Davis was host at The Jolly Judge, Jem Symonson was host of Moe's Tavern (from The Simpsons), Ian Warr was host at The Dragon's Den and Craig Watson was host at Seasick Steve's. 42 households participated in the event and we raised £165 for The One Can Trust.

For the Wine Tasting Evening, participants could order 3 bottles of wine from Lloyd's Wines. Simon from Lloyd's Wines started the evening off by giving a summary of each wine they would be sampling, and the 'safari' groups were hosted this time by Jo Allen, Matt Davies, Scott Thorn Davis, Ian Warr, Henry Lane, Amanda Dobbs and Craig Watson. 43 households participated and this event raised £160 for The One Can Trust.



A. ELLIS *Tree Surgery*

Fully Qualified and Insured Tree Surgeons



We undertake all aspects of
hedge trimming and
tree surgery

For a free, no obligation
quote please contact us

T: 01494 817234 M: 07709 491589

E: info@aellistrees.com

www.aellistrees.com

For fencing enquiries call Mike on:

T: 01494 868466

WILDLIFEWATCH

Peter Symonds

Spring/Early Summer 2020

As usual Spring and early Summer have produced lots of interesting records including some rarities in the area.

In mid-March a Dipper appeared on the Rye in High Wycombe and generated a lot of interest with local bird watchers. My last report mentioned about a White Tailed Sea Eagle just over the border in Oxfordshire. One was then recorded at Lodge Hill, near Saunderton on 23rd March and remarkably two were then seen near Watermead, in Aylesbury at the end of the month. At least one of these birds was from the Isle of Wight release scheme. Another rarity was a White Stork recorded on video at Bradenham on 8th June. A small population of these birds have been re-introduced in West Sussex and have bred successfully for the first time this year.

A more local uncommon bird is the Firecrest, closely related to Goldcrests but with a white eye stripe and a different song that experts can pick out. A number have been recorded in Monkton Wood in recent years. Former Speen resident, Dick Seekins, who is good at recognising bird songs, heard one in conifers close to the felled area between Speen and Great Hampden and I was later able to find and see this bird for myself – a local first for me.

Red Kites have nested in Coleheath Bottom again with Miles Awdry reporting one young fledged from a nest near his property. Some 30 were present in Spring Coppice Lane at the end of May diving for chicken scraps. Roger Anderson reported seeing a Kite force a cat to abandon a rat it had caught and then swoop back to seize the rodent. Meanwhile David Gregory sent photographs of a female Sparrowhawk on a white dove in his garden.

Moorhens have bred again in our garden and also in Water Lane with five young hatched in each case but losses have occurred. Of our five only one has survived to reach full size. Craig Watson reported a large Grass Snake in the Water Lane pond being chased by the adult Moorhens seeking to protect their young. Several Mallard have again nested in gardens in the village. Again numerous losses occur but ten birds flew from our back garden with another eight doing well elsewhere in Abbotswood. We now have a further brood of eight young ducklings. Mandarin ducks have been recorded in Great Hampden and also in Monkton Wood. A Heron has been an early morning visitor to our own pond and may have taken young moorhens albeit there has also been a unknown nocturnal predator causing losses.

Roe deer are still about and some with fawns have been reported by Jeremy Symondson to the north of the village off Grubbins Lane. There have also been reports of Chinese Water deer near Great Hampden. Certainly these animals have spread from the Bedfordshire border where there have been escapes from Whipsnade and Woburn Park. Muntjac remain quite common and they can be seen with young at any time of year. Duncan and Anna Dow found a young one in Great Hampden that seemed to have a damaged lower jaw possibly from a road accident. It had to be taken to Tiggywinkles by Simon Weinberg to have the injury attended to. Unfortunately they are not now allowed to return non-native animals to the wild so this animal may well now be kept in captivity.

Please let me know of any interesting sightings

Peter Symonds 01494 488016 or psymonds590@gmail.com



Young Red kite from Coleheath Bottom nest. Photograph by Miles Awdry.



Anna Dow with the injured Muntjac fawn

SPEEN SPRING CLEAN & COLLECT

Cat Cook

With all the charity shops closed and everyone seizing the opportunity of lockdown to have a clear out, Speen became a captive audience for a village-wide 'yard sale'.

With approximately 40 houses participating, all kinds of pre-loved items were deposited on verges and lawns on a sunny Bank Holiday Monday in May to soon find new homes and a new lease of life.

Subsequent donations to One Can Trust were collected, amounting to over £1,500 and the WhatsApp group 'Speen Sales & Wants' goes from strength to strength with a house and a car sale amongst its achievements! Contact Cat if you want to be added!



Private Client Lawyers for you and your family

“An outstanding niche private client firm...its practitioners are recommended as experts in their field, providing high-quality advice...its client service is second to none and every client is valued equally and treated with sensitivity and genuine compassion.”



We provide expert advice from Wills, trust, charity and tax Solicitors and advisors. Whilst inheritance tax is an issue for most of our clients, we are also experts in advising on other potential threats to the family and its wealth, such as mental incapacity and divorce of children. We are exceptionally sensitive to clients' needs and take the time to understand their individual circumstances and priorities. As a result, our clients benefit from technically outstanding, bespoke advice which is explained clearly and in a straightforward manner. This allows clients to put in place the best arrangements for themselves and their families.

To help you review your current position we are happy to provide a free, no obligation one-hour consultation.



Nadine Jayes PARTNER
nadine.jayes@theburnsidepartnership.com



Martin Pollock TRUSTS DIRECTOR
martin.pollock@theburnsidepartnership.com

For further information, please contact:
info@theburnsidepartnership.com



Jubilee House, Third Avenue, Marlow, Buckinghamshire SL7 1EY
T 01628 301 221 E info@theburnsidepartnership.com W www.theburnsidepartnership.com

FOLLOW US ON:



B

THE BURNSIDE
PARTNERSHIP

OXFORD MARLOW LONDON

BEECHDEAN DOWN ON THE FARM

Gill Kent

Although lockdown conditions have at last been lifted, the older generation and those who at the moment are jobless have plenty of time to review the past and look back on 'the good old days', when the area was very rural and everyone knew everyone else. 70 years ago, between Hughenden Valley and Lacey Green there were seven dairy farms. The furniture factories and Harrisons stamp factory provided employment for residents of Speen and North Dean. Doris Redrup, who died recently, used to walk to Wycombe and back every day to work at Harrisons. Everyone knew how to handle animals and the rules of the countryside. There are now only two dairy farms and residents commute to work in cars, trains and planes.



rules of the countryside but although nearly all farmers welcome school visits, due in part to over-zealous Health & Safety Regulations, schools are unable to take advantage of their offers.

There are few areas in the country with as many footpaths as the Chilterns; there are also few areas with as many dogs! As a consequence, there are

now very few sheep farmers as the risk of dogs killing lambs is too great. Cattle are not frightened by dogs so if you are on a footpath and cattle come up to your dog, let it off the lead (a dog will always out run cattle). Some people think that anything with horns is a bull and is therefore dangerous; nowadays farmers try to dehorn all their cattle but occasionally one gets missed!

What are the consequences of these changes? The social life in Speen has undoubtedly benefitted from the building expansion and the influx of people of many talents. North Dean, because of housing restriction, has not had any population increase since the 70's, but still benefits by everyone knowing everyone else. Farming in the Chilterns has particular problems – an increased population with little knowledge of the countryside. Ideally children at school in local primary schools should be educated in the

In recent years farmers have had to contend with low returns and increasingly bureaucratic regulations. Welsh farmers are worried about their lamb sales to France and fishermen about the French stealing their fish. At the moment, the milk from North Dean and Lacey Green appears to have a guaranteed market. The milk goes to the Arla factory in Aylesbury. The profit margins are so small that if the grass does not grow dairy farmers are in trouble; fortunately the rain came just in time!

SHORT STORY COMPETITION

Grainne Suter

Well done Harriet Maynard, age 6, winner of the Beatrix Potter Short Story group. Here's her story:

Maybays Travels

Up in space there was a young alien called Maybay. Maybay had 3 legs, 5 eyes, 3 noses and was red, green and yellow. He sounds very scary looking but he's actually friendly and cute. It was morning for Maybay and he was the first to wake up. He woke his mum and dad up. His mum said to Maybay that the humans were going to come and take some pictures. The humans were coming now and Maybay was really excited. The rocket landed and Maybay waited excited to see the humans! He heard a noise and people started coming out. Maybay was standing by the door and FLASH the first picture was taken. His mum and dad told Maybay not to go near the humans. His mum said that these humans were the first to go to the moon and they were excited. Maybay was about to hug one of the humans but then he remembered what his mum said. Instead Maybay stood by the Astronaut and the astronaut thought that Maybay was a teddy. Suddenly it was time to go, the astronaut picked Maybay up and put him in the rocket... Maybay was off to Planet Earth! Maybay was so excited. His mum and dad were looking for him, they got in their rocket searching for him. Maybay landed on Earth. The astronaut had a daughter called Alice. Alice found Maybay and fell in love. She hugged Maybay and wanted to keep him. Maybay pretended he was a teddy but when Alice fell asleep Maybay jumped out of the window to escape. He ran to the space centre, got in a rocket and flew home. He told everyone how amazing Earth was and they all wanted to visit. What will the humans think of the aliens?



Congratulations also to joint winners in the adult category, Martin Evans and Roger Craft.

THE HARROW

Serving great food 7 days a week



YOUR LOCAL, FAMILY AND DOG FRIENDLY PUB
SERVING DELICIOUS, FRESHLY PREPARED FOOD,
LOCALLY SOURCED REAL ALES
AND A GOOD SELECTION OF WINES

FOOD SERVED:

MONDAY-SATURDAY : 12NOON-9PM

SUNDAY : 12NOON-5PM

QUIZ NIGHT TUESDAY 8PM

*There's always something going on at The Harrow Pub,
so get yourself down here
and enjoy the beer, the entertainment and the company.*

01494 564105

WARRENDENE ROAD, HUGHENDEN VALLEY, HIGH WYCOMBE HP14 4LX

WWW.HARROWHUGHENDEN.CO.UK

KING WILLIAM IV UPDATE

While many aspects of UK business and commerce have been closed by the Coronavirus pandemic we have been able to make some progress with the KW4, although with mixed success.

Open Market Valuation & Offer to Purchase

If you recall we commissioned a report from Christies to independently determine the Open Market Value (OMV) of the pub, using a grant from the Plunkett Foundation. We submitted an offer at OMV to the owner via his agent on 20 Dec 2019. Unfortunately we received no formal feedback on this offer, despite a number of conversations with the agent and so have assumed the offer was not accepted.

Asset of Community Value (ACV)

This is a level of protection for community assets eg. pubs, shops, village halls etc provided in the Localism Act 2011, legislated by government to help communities retain their important assets. The KW4 benefited from an ACV, originally requested by CAMRA, which expired on 20 May 2020. In the case of a prospective sale of an ACV listed asset it provides a 6 month moratorium on the sale to allow for community groups to submit an offer. We have lobbied Wycombe District Council and the ACV was successfully renewed and the KW4 now benefits from this protection for the next 5 years.



Council Support and the Impact of Local Government Reorganisation

The COVID-19 crisis delayed the May 2020 local authority elections and thus the formation of the new Unitary Authority for Bucks could not proceed without the newly elected members. Current elected members

will continue for the next 12 months on an interim basis. We have been told that with priorities of Council business focussed on COVID-19 and other important public services, it's unlikely that further support to us on this project will be forthcoming until the new Bucks Unitary Authority is created in 2021. So we wait for then to further explore opportunities with the Council to help us with our project.

That's all for this update. We had hoped for more positive news but unfortunately that's not the case and we will continue to work on finding a solution for community ownership of the KW4.

We wish you all well as we exit the COVID-19 crisis and in the meantime if you have any questions please email info@savethekingwilliam.org.

SPEEN HERITAGE GROUP

Peter Symonds

Speen Heritage Group has continued to function during the lockdown with the benefit of Zoom meetings. We are trying to improve the indexing of the large village archive that was developed by Bob Johnson when he collected information for writing *The Leaves of Time*. There are about seven large boxes of plans, maps, deeds, articles, photographs and other records kindly stored for us by the Baptist Chapel.

A request for village volunteers was made and we are grateful to Andy Thompson and Jean Morris for stepping forward to help organise and index some of our records. The intention is to organise items so that they

can eventually be accessed by computer search and therefore more widely available to all but it will be a long job. Jean Morris has completed some extensive indexing of our records but there are more boxes to investigate so additional volunteers would be very welcome (please contact John Radford 488679 if you are interested in helping).

The village sign, which we look after, has had a twenty year makeover with a new white background and the post has been treated with a litre of Danish oil. We are also planning future potential talks but with the virus still present it is uncertain as to when we can arrange an open meeting in the village hall.





UNIVERSAL CARE

always there



Whether it be 1 hour per week or full time,
it is a privilege to be trusted to care for you
or your loved ones

5 Reasons to use us -

- High standard of care
- Established over 3 decades
- All profits go to charity
- Directors have hands on involvement in the business
- Competitive charges

Please call on 01494 678811
or email care@universal-care.co.uk
www.universal-care.co.uk

Ideas for the way forward after Coronavirus

Jane Farley

Coronavirus has affected us all, some much more than others and there is no doubt that life will be different in many ways in the future. Just how this new life will develop depends on whether we take this opportunity to reflect on the benefits accrued from a calmer, quieter world. It may help to consider what has contributed to this pandemic.

Scientists are still investigating how this virus started and there is rising demand for a full international enquiry to establish the facts. However, there are some facts which are well known and have been in the public domain for a long time. This coronavirus is one of a number of zoonotic viruses which have developed in response to the way humans interact with the natural world. It is thought that the virus may have developed as a result of cross contamination in the wet markets of Wuhan, China. The way we keep, slaughter and consume animals across the world has caused similar diseases. Also, we know that deforestation, increased global temperature and climate change are playing their part alongside fast-moving global travel and economic structures.

It is important to see the connections between this pandemic, climate change and devastation of the natural world. They are all interconnected. Scientists have been warning us about the threat of climate change and biodiversity loss. They say that the next ten years will be critical in working to keep global temperatures below a 1.5 degree increase and prevent hundreds of plants and animals becoming extinct. Yet no country on earth is currently pursuing necessary policies to prevent terrible consequences in the future. We could be heading for temperature rises in the region of three degrees with all the attendant threats to life on earth.

But we have to have hope now and for the future. Every day we hear stories of the way communities, including our own, have come together to lend help, guidance and comfort at such a difficult time. As we have been coming out to clap on Thursday evenings, we have been saluting the amazing people who work in the NHS, care homes and other essential services. Their work has never been so essential or appreciated. We have shown just how we can come together and work together. It proves that we have amazing abilities to do good, to create, invent and care.

At the same time the government have put huge sums of money to help businesses and individuals which would have seemed unthinkable in the past. Out of this awful situation we can salvage real hope for a better future. We have shown that significant change is possible - that we can make a better future, a better normal. We can reduce our dependence on fossil fuels, we can work from home, drive less, share more, give more, take better care of nature and animals instead of exploiting them for profit and cheap produce. Every part of life has been affected by this pandemic and it seems as if life will be very different for ever and it is now up to us to make this different as good as possible.

SEAG is interested to know from you what you have appreciated over the last few months and how these good things could be adapted and continue into the future. I have included some websites below if you wish to read more about this subject and we welcome your ideas.

www.theguardian.com/environment/2020/may/05/green-stimulus-can-repair-global-economy-and-climate-study-says

www.medium.com/@WWF/to-prevent-the-next-pandemic-we-must-transform-our-relationship-with-nature-c42ce9dffc62

It has been suggested that we should all take up more of a plant-based diet and so here's a light and easy to make summer risotto. The key, as always, is to not stop stirring. Serves 3. Happy cooking!

Courgette and Lemon Risotto

2 large courgettes
225g (8oz) risotto rice
750ml (1¼ pts) vegetable stock (approx)
150ml (5fl oz) dry white wine
75g (2 and half oz) vegan butter
1 onion finely chopped
1 garlic clove, finely chopped or grated
Zest of 1 lemon
Juice of half a lemon.
2tbsp grated vegan parmesan cheese
Chopped parsley, as desired
Serve with garlic bread and spinach salad.

Method

1. Grate 1 courgette, slice and blanch the other for 2 minutes. Set aside for later.
2. Melt half the butter over a low heat and cook the onion for 5 minutes, until softened. Add the garlic and rice, stirring continuously for 1 minute. Pour on the wine and continue to stir until all liquid absorbed.
4. Stir in one ladleful of stock – the rice should be at a slow simmer. Stir continuously until all the stock has been absorbed and the rice parts when a wooden spoon is run through it. Add another ladleful of stock and continue cooking in this way, adding stock one ladle at a time and stirring as you go.
5. When the rice is almost ready and most of the stock has been used, add the courgettes. Cook, still stirring, for one more minute.
6. Remove the pan from the heat and stir in the lemon zest and juice, parmesan and remaining butter. Stir vigorously until the butter is melted, then cover with a lid and leave to stand for 1 minute.
7. Add parsley to risotto. Serve with garlic bread and/or spinach salad.



JSQ FARM ENTERPRISES

SALES • REPAIR • SERVICE

JSQ Farm Enterprises provide their customers with top of the range products from industry leading manufacturers. In addition to this we also offer a first class after sales service.

We pride ourselves on giving exceptional service and advising on the product best suited to the client's individual needs.

We are based on the outskirts of Princes Risborough and offer sales and repair for all your garden machinery, covering Aylesbury, Thame, High Wycombe and surrounding areas.

Lily Bank Farm Barn
Lily Bottom Lane
Princes Risborough HP27 0RN
01494 489806
www.jsqfarmenterprises.com



Why Every Flower Counts

Naomi Proudlove

As part of our commitment to protect and restore nature and biodiversity in our community, over the last few months SEAG has encouraged our community (and local Parish Council with limited success) to delay cutting verges and lawns to encourage and support wildflowers. We were delighted so many of you participated (intentionally or otherwise) in #NoMowMay, and some rolling into #LetItBloomJune, with a beautiful array of wildflowers blooming across many of our roadsides and lockdown lawns. But visual impact is a positive side effect of the main goal, which is to encourage a greater range of plant varieties in our environment, all of which provide vital food for pollinators across the changing seasons.



Research resulting from Plantlife's Every Flower Counts citizen science survey revealed not only an astonishing diversity of wild flowers growing on our lawns (over 200 species were recorded), but also that simple changes in mowing can result in enough nectar for 10 times more bees and other pollinators. All lawn flowers in the survey combined produced a colossal 23kg of nectar sugar per

day, which is enough to support 2.1 million (or around 60,000 hives) of honeybees. Plantlife asked survey participants how often they mowed their lawns, and this revealed that the highest production of flowers and nectar sugar was on lawns cut every four weeks. This gives 'short-grass' plants like daisies and white clover a chance to flower in profusion, boosting

nectar production a whopping tenfold. Meanwhile areas of longer un-mown grass had a wider range of flowers, including nectar-rich oxeye daisies, field scabious and knapweed increasing the range of nectar sources for different pollinators and extending nectar availability into late summer (as magnificently seen in the field at the bottom of Spring Coppice). Read more at www.plantlife.org.uk/uk/about-us/news/no-mow-may-how-to-get-ten-times-more-bees-on-your-lockdown-lawn.

Well done and thank you to everyone who has participated or at the very least enjoyed the wonderful display of spring into summer wildflowers this lockdown, and perhaps this research will encourage you to think again about your mowing habits.

Ridgley's Field

Jo Podmore

Ridgley's Field was visited in mid-June by Matt Pitts of The Plantlife Charity. Plantlife has funded the Yellow Rattle seed that has been sown this year, this being the first step in the wild flowers meadow restoration at Ridgley's Field.

It took around 6,000 years to create the species-rich grassland for which the UK is globally famous. Yet in less than a century we have lost 97%. It's now rare, covering less than 1% of UK land. The Playing Field committee and SEAG are working together, with guidance from Plantlife, to enhance diversity in Ridgley's Field.



Matt was 'extremely pleased' with progress, despite the rattle being hit by late frost and almost drought conditions through April and May. A good percentage has germinated and will set seed for next year, suppressing the grasses and encouraging the growth of other wild flowers.

This will be a long term project, but we could give nature a helping hand by introducing wild flower seed from the local area. If you have any of the following species growing in your gardens, please let us know and we would be happy to come and harvest the seed to sow in Ridgley's Field this summer.





Handmade in
Princes
Risborough
with a 10 Year
Guarantee

The beauty of sleep



At Hypnos, comfort comes guaranteed. But whilst each Royally Approved bed is individually handmade by master craftsmen, using the very finest natural and sustainable materials, it is you who carefully designs the look of your bed and creates a majestic centrepiece for your bedroom. So, to be sure that you enjoy a beautiful night's sleep and awake feeling revitalised and refreshed, visit our Showroom and design a Hypnos bed that's just right for you.



HYPNOS®

THE MOST COMFORTABLE BEDS IN THE WORLD

Visit our Showroom: Monday to Thursday 9.00am to 5.00pm | Friday and Saturday 9.00am to 4.00pm

Hypnos Limited | Longwick Road | Princes Risborough | Bucks HP27 9RS

T: 01844 348200 | www.hypnosbeds.com

Alternatively, visit your local Hypnos Retailer:

Aylesbury Lucas Furniture **01296 486255** | **Gerrards Cross** Crystal Carpets & Furnishings **01753 889230**

High Wycombe Beadle Chrome Ltd **01494 523249** | **Thame** Greens Furnishings **01844 212560**

Hypnos is proud to be Carbon Neutral, complying with PAS 2060.

SPEENPLAYING FIELDS

Clare Morris, Chair

So often the hub of many village events, the Playing Fields have been quiet this spring and summer, with the exception of those taking their daily exercise, playing socially distant 'no tackle' football or practicing their golf swing. The play areas have been closed and the community events that the Playing Fields come alive with are unable to take place – be it the School Cross Country, Fun Day, Community Ball or Fete.

These events and other fundraisers provide half of the Speen Playing Fields' income and our costs are the same despite their lack of use - insurance, grass cutting, maintenance and utility bills all have to be paid. It's the time of year when the Speen Playing Field Draw collectors are knocking on your door asking for a contribution - I know many of you are regular contributors buying tickets that for £5 provide an entry into the monthly draw for a whole year. There will be little opportunity this year to raise funds from events on the Playing Fields so if you are able to invest in additional entries - there is no upper limit to the number of entries you can purchase - we would be most grateful. Contributions to take part in the Draw need to be with your collector before 31 July. It is hoped that contributions to this income stream or other donations will counteract the anticipated losses. There are opportunities to win one of eight monthly prizes with

two £50 bonus prizes at Christmas and Summer Fun Day. A cared for and well-maintained green community space within the village is an important asset for all residents. On a more disappointing note the rear of the Pavilion was found covered in graffiti which has now been removed by the trustees. This is the first time in over twenty years we have had to report such an instance – please respect your community buildings.

The trustees held a work party on 16 June to undertake some maintenance work. Hopefully restrictions will have loosened by our Autumn work party and we will be able to be joined by villagers. The date is the afternoon of 19 September.

We are delighted that we have now been able to re-open the Main Play Area and that the Bike Park remains open. If you are using the facilities please follow government guidance which is noted on posters in both areas, in particular that social distance measures are maintained. Unfortunately, the Under 5's area remains closed and the roundabout is also out of use, in need of repair.

Please do get in touch if you have any queries or are interested in joining the small group of trustees that manage this facility on the community's behalf.

THE GREAT BRITISH WEEK OF SPORT

Andy Thompson

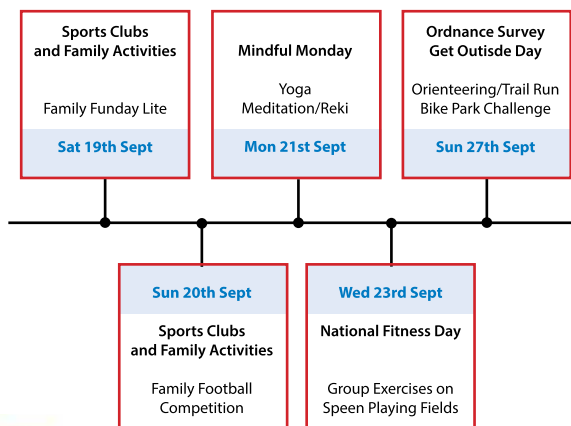
Let's Get Our Community Active!

I hope you have all been enjoying home and outdoor exercise during lockdown - maybe #PEwithJoe? or even Zoom Yoga? Exercising online or alone can be a bit lonely and so Speen Playing Fields would like to see if we can bring our community together and get active outdoors as part of The Great British Week of Sport between 19th to 27th September 2020.

GBWofS has a community focus in supporting family activities, outdoor exercise, exploring of your local area and also keeping a healthy and active mind. The idea is that under the GBWofS framework we would host events in our community for everyone to participate in, assuming the government's lockdown measures will allow us!

We are looking for volunteers to help, so if you would like more information or have an idea for an event then please email playingfields@speenbucks.org.uk.

EVENT IDEAS



#BeActive

<https://www.ukactive.com/beactive/>

Events will be run in compliance with any Coronavirus restrictions in place at that time.

Heppelthwaite

The Red Van Plumbers



Plumbing and Heating

Boiler Installations and Services

Oil | Biomass | Gas

01628 533 550

www.RedVanPlumbers.co.uk

SPEENHERITAGE GROUP - VE DAY

Clive Rainbow



The Heritage Group was asked to produce something to record the 75th anniversary of the Victory in Europe (VE) Day. Speen had very good cause to celebrate the end of WW2. WW1 had taken the lives of 10 young men from the village; none were killed in the Second World War.

A comprehensive report of Speen's wartime activities is given in Chapter 16 of *The Leaves of Time*. Fundraising campaigns, to provide comforts and assistance where necessary to local servicemen and women, were run continuously by the village's three pubs: The Plough, later re-named as The Old Plow; the Old King George and the King William IV. On average, they raised about £100 a year. However, there were also two major, nationwide, appeals: a "Wings for Victory" week in 1943 and a "Salute the Soldier" campaign in 1944. For the first one, Speen organised a dance, several whist drives and - having contacted HQ Bomber Command - a performance in the Village Hall by the RAF concert party. The WI also arranged a sale and the School held poster and soft toy competitions. For the second appeal, there were children's entertainments; whist drives, of course - Speen held a whist drive every month - an arts and crafts exhibition; an auction sale; another dance and another performance by the RAF concert party. The first appeal raised more than £4,000; the second one raised £3,700. Given the size and demographic composition of Speen those were two remarkable achievements.

Men from Speen joined the Home Guard (the Battalion HQ was in North Dean) and many women joined the WVS; the Women's Voluntary Service. In villages like ours the WVS chiefly took on farm work. At least 85 children were evacuated to Speen to escape the Blitz; the little "evacuees" were fostered by local families and attended our School. The large house called Abbotswood also provided rest and recuperation for numbers of London firemen after the "Blitz".

In 2020, many Speen houses put out bunting and Union flags to celebrate the 8th of May. (The six households of Monkton Way - whilst observing the social distancing of 2 metres - held a street party with plenty of traditional sponge cakes; scones with cream and strawberry jam ... and Prosecco.)

But the display of the Allies' national flags created by Roger Springall of Ferns Farmhouse eclipsed all others. He gave special emphasis to the Polish flag because, on leaving technical school, he was recruited by an engineering consultancy staffed exclusively by Poles who had fled to Britain to escape the occupation of their country by Nazi Germany from the West and Soviet Russia from the East. Thanks to them, Roger went on to make a successful career as a structural engineer.

The contribution of the Polish exiles to WW2 deserves a special mention. Having pioneered attempts to break the Enigma code, they brought their crucial de-ciphering machine to Bletchley Park; throughout the Battle of Britain they manned two RAF Squadrons (302 and 303) and achieved exceptionally high kill rates. As the war progressed, the crews of 27 RN ships and more than 20 RAF squadrons were entirely Polish. Perhaps the most famous battle honour of the Polish regiments in the British Army was the capture, at enormous cost, of Monte Cassino which opened up the road to Rome. Meanwhile, resistance fighters back in Poland provided a stream of intelligence reports (and even pieces of the V1 and V2 weapons) and one of the three most influential double-agents of Operation FORTITUDE, the brilliant D-Day misinformation scheme, was a Polish man codenamed BRUTUS. Sadly, by the end of WW2, Poland had been made part of the Soviet Union. So, despite their disproportionate contribution to the Allies' cause, our Polish comrades were denied participation in the Victory Parades.

Martin Holman's Pest Control & Services



Qualified & Fully Insured



NPTA

tomorrow's association
for today's technician



(M) 07510 290321 (T) 01296 622972

ratman01@talktalk.net



@MHPestControl

VILLAGE ENVIRONMENTAL SERVICES DOMESTIC DRAIN SERVICES

Proprietor: Dennis Cook
Est. 1979

BLOCKED DRAINS?

FAMILY RUN BUSINESS SINCE 1979

BLOCKED DRAINS CLEARED

REASONABLE RATES

CCTV DRAIN SURVEYS

NO EXTRA CHARGE FOR EVENING, WEEKEND OR BANK HOLIDAY CALLOUTS

FULL PUBLIC LIABILITY INSURANCE

CALL US DAY OR NIGHT

**24/7
CALLOUT
SERVICE**



07850 635 844 01296 624 221 (MESSAGES)



M. R. COLLINS

GARDEN CONSTRUCTION

Est 1979

Driveway, Paving, Brickwork, Fencing
Groundworks, Excavations, Operated
digger hire.

We specialise in Block paving and all
types of slab laying Indian stone and
concrete offering a start to finish service
inclusive of excavations muck away,
supply and fix.

For estimate Phone: 01844 346360
Mobile: 07774 256732



Briants
Fencing, Garden Machinery & Forestry Supplies
Of Risborough Ltd
www.briantsltd.co.uk 01844 343663 Thame Rd, Longwick, HP21 9AB

STIHL
HONDA
POWER EQUIPMENT
HAYTER
MAKERS OF THE FINEST MOWERS

**SUPPLIERS OF
FENCING MATERIALS,
GARDEN MACHINERY &
FORESTRY EQUIPMENT**

GREAT DEALS THIS WINTER
UP TO 50% OFF SELECTED LINES. PUBLIC, DIY & TRADE ALL WELCOME

You can now order online for local delivery
www.briantsltd.co.uk or call **01844 343663**

Nick Higgins
Forestry & Fencing
Contractor
m. 07768 383418
t. 01494 488835

45 Great Hampden Seasoned logs
Bucks available
HP16 9RJ



JOHN BISHOP

Est. 1972

GARDEN MACHINERY

Sales & Service



HONDA
LAWN & GARDEN



Machine Hire

Scarifiers, Cultivators, Strimmers, Mowers
Hedge Trimmers

Blade/Chainsaw Sharpening & shear grinding.

We also stock a wide range of parts for various products.

Free Collection & Delivery



Tel No. **01494 563513**
Mob. **07917 106004**

1 Margaret Cottages, Northdean, High Wycombe, Bucks, HP14 4NH



SPRINGLINE CARS

PRIVATE HIRE

- Airport Transfers
- Personal Service
- Events & Occasions
- Owner Driver
- London Trips
- Local Knowledge

RISBOROUGH
01844 27 44 74
Know the voice, know your driver



Paul's Plumbing
07786 175123

Friendly, Reliable & Local

ELECTRICS & PLUMBING

Electrics . Heating . Plumbing
Problem solving

Electrical inspection & testing • Consumer units
Heating controls • Internal & external wiring
Bathrooms • Kitchens • Taps • Leaks



Based in North Dean.

**Local to Speen, Naphill, Walter's Ash,
Lacey Green, Hampden, Hughenden**

Paul Newman Ltd. 07786 175123 | 01494 565573

WEDDING INVITATIONS **POSTCARDS**

PLACE CARDS **MENUS** **NOTEPAPER**

DATA MERGED LETTERS **NEWSLETTERS** **XMAS CARDS**

MEMBERSHIP CARDS **INVITATIONS** **NOTELETS**

FIXTURE CARDS **TAGS** **POSTERS** **ORDER OF SERVICE CARDS**

PK **gplex**
INPRINT MORE THAN JUST PRINT

DESIGN; ARTWORK; LITHO, DIGITAL & WIDE FORMAT PRINT
Pinstone Way, Tatling End, Gerrards Cross, Bucks SL9 7BJ
T: 01494 452266 • E: mail@pkinprint.co.uk
W: www.gplex.co.uk
Printers of Speen & North Dean News

CONTACT US NEXT TIME YOU NEED A PRINT QUOTATION
doing more with print

CG
Tree & Garden Services

Tree surgery & felling
Fencing
Hedge cutting, topping & turfing
Woodchips & firewood for sale



Free estimates • qualified staff • fully insured

Tel: 01494 562045
Mob: 07798 896380

Coles & Blackwell

Car Service & Repairs
Book online at:
www.colesandblackwell.co.uk

Quality car servicing and repairs much closer than you think!

Where are we ? You will find us 300 metres down the small lane opposite the top of Bradenham Wood Lane in Walters Ash, High Wycombe HP14 4UX

Established in 1959



Servicing
Did you know you can get your car serviced by us without invalidating your manufacturers warranty? Legislation passed a few years ago means that you can now choose any garage of your choice to service your vehicle.

Courtesy cars
We have a fleet of new loan cars at your disposal whilst we service your own car or repair bodywork damage. Best of all - they are FREE OF CHARGE!
All part of the service you come to expect from Coles & Blackwell

air conditioning _____
mot testing _____
vehicle servicing and repairs _____
crash repairs _____
tyres, clutches & brakes _____
computerised diagnostics _____
batteries & exhausts _____

Opening Hours:
Monday to Friday 7.30am to 5.30pm

01494 563102

WHO'S WHO

Bucks County Council - Member for Lacey Green	Carl Etholen	01494 564771
Hughenden Parish Council - Chairman	Roger Beavil	01494 715296
Lacey Green Parish Council - Chairman	Cathryn Davies	01844 342800
Lacey Green Parish Council - Councillor for Speen Ward	Roger Craft	01494 488343
North Dean Village Hall - Chair	Dick Pooley	01494 269615
North Dean Village Hall - Bookings	Jeremy Mudie	07880 785983
North Dean Village Fete	Jez Wicks	01494 563517
Pigotts 7 '48' Musical Evenings	Nick Wheeler-Robinson	01494 562167
Riding for the Disabled	Gloria Holmes	01494 488420
Speen Good Neighbours	Pat Richardson	01494 488627
Speen & North Dean Guides	Pauline Hall	01494 488372
Speen & North Dean News - Advertising	Tom Dent	01494 488943
Speen & North Dean News - Chair	Gloria Holmes	01494 488420
Speen & North Dean Toddler Group	Natasha Kann	07737 638618
Speen Baptist Church - Church Administrator	Sandy Mitcheson	01494 488875
Speen Environmental Action Group (SEAG)	Jane Farley	07889433630
Speen Fete - Chair	Clare Morris/Helen Davies	01494 488553
Speen Helping Hospices - Secretary	Maureen Laing	01494 488397
Speen Heritage Group - Chairman	Peter Symonds	01494 488016
Speen Marquee	Greg Cook	01494 488939
Speen Playing Fields - Chair <i>playingfields@speenbucks.org.uk</i>	Clare Morris	01494 488553
Speen C of E Infant School - Head	Jacquie Coles	01494 488321
Speen School PTA - Chair	Cat Cook	01494 488939
Speen Stores	Alison Templeman	01494 488258
Speen Tennis Court - Secretary	Philippa Lane	01494 488453
Speen Village Hall - Bookings	Sue Taylor	01494 488500
Speen Village Hall - Chairman	Bill Groves	01494 488180
Speen WI - Secretary	Jenny Pearce	01494 562333
St John's Parish Church	Revd Tony Bundock	01844 347741
Wycombe District Council - Member for Lacey Green & Hampdens	Cllr. Graham Peart	01494 488327

BEECHDEAN

Farmhouse Dairy Ice Cream



Now available from
Hughenden Village Store and Coffee Shop

• 130ml Beechdean Farmhouse 'Spoon in Lid' Tub •
Vanilla, Double Chocolate, Strawberry, Salted Caramel, Mint Choc Chip,
Honey & Ginger and Lemon Sorbet

Special Offers Available in-store!

- 1 Litre Beechdean Farmhouse Tub •
- 2 Litre Beechdean Farmhouse Vanilla Tub •

Hughenden Village Store and Coffee Shop
Coombe Lane, Hughenden Valley, High Wycombe HP14 4NX

 @HughendenValleyShop1



  
@BeechdeanGroup



Opening Hours: Monday to Friday : 7.30am – 6pm, Saturday : 8am – 4pm, Sunday : 8am – 3pm

A photograph of a garden path leading through a rose archway. The path is made of light-colored gravel and is bordered by a low, neatly trimmed green hedge on the left. The archway is covered in dense foliage and numerous red and white roses. In the background, a white building with a glass door is visible through the trees.

Homes of Distinction

If you are looking for a very special property or have one that would benefit from our award winning marketing then we are ready to act on your behalf.

01844 343131
Princes Risborough Office

01494 711677
Hazlemere Office

FINE & COUNTRY
fineandcountry.com™