



THE
SPEEN
& NORTH
DEAN
News

JOIN THE
SPEEN TREE PLANTING INITIATIVE
See Page 7 for details



Summer 2019
Issue 75



simply
beautiful
gardens

Alchemille has been designing and creating beautiful, innovative, inspirational outdoor spaces since 2004. From urban courtyards to country estate gardens, we can make the simply beautiful garden of your dreams a reality.

FROM CONCEPT TO CREATION

01494 488072 • 07909 936718 • design@alchemille.co.uk

www.alchemille.co.uk

Get smart in **your** garden

From comprehensive plant care advice, to regular maintenance or a one-off project, our experienced team is ready to smarten up **your** garden.

For more information contact
Andy Merriman on

07827 290770



Working in association with Alchemille Garden Design

Welcome!

to the Summer edition of
The Speen & North Dean News.

Once again we are in full-swing of doing what we do best in our unique villages up here in the hills and valleys - so there's plenty to read about in the forthcoming pages, but I'm particularly excited about some of the new content we have in this edition - read on and be inspired!

This year's hugely fun and successful Fete was Lesley Thorn-Davis's third and last, so as well as expressing many thanks to her from us all, the committee are now looking for a new Chair to take the reins for 2020. If you're up for the challenge please do get in touch with Lesley!

And now we heading into Festival season, and if you're new to the village you're in for a treat! Cat Cook and her team have been working tirelessly to put together over two weeks of entertainment for all, starting on 31st August. The full programme should be delivered through your door with this magazine, and once you've had a chance to read through it, do book your tickets early to avoid disappointment, either online at www.speenfestival.org or by filling in the booking form in here on page 19.

Wishing you all a lovely summer, and do keep sending in your articles and photos!

Jacqui Laing

Contents

What's On	5
Speen Environmental Action Group	6
Speen Tree Planting Initiative	7
North Dean Rock the Hill	9
Speen C of E Infant School	11
Speen Church	13
Speen Helping Hospices	15
Speen Village Hall	15
Speen WI	17
Speen vs North Dean Cricket Match	17
Speen Festival	19
Speen Fete	20
Wildlife Watch	23
King William IV Update	25
Beechdean Down on the Farm	25
A Small Meadow in North Dean	27
Pigotts Raises the Roof	29
Speen Ladies Tennis	29
Speen Photography Group	29
Who's Who	38

Next Edition

Copy for the next edition is **due by 20th October** with a planned publication date of late-November. Please send photos separately from text, together with captions and a consent form (downloaded from the SNDN website www.speenbucks.org.uk) if any photos are of children. Please send to editor.sndn@speenbucks.org.uk.

With grateful thanks

To Wycombe District Council,
Hughenden Valley Parish Council,
Speen Stores Charity Committee and
all our advertisers for their support
of this magazine.



Welcome Packs

The Good Neighbours scheme was set up many years ago and is now run by Pat Richardson in Speen and Judith Broadley in North Dean. One service is to provide new residents with a Welcome Pack of village information, so if you know of anyone new to the area please call: Pat Richardson (Speen) 01494 488627 or Judith Broadley (North Dean) 01494 563178 cooljude@btopenworld.com

Village News

If you are not already signed up to The Village Messenger and The Village Diary, do email Village@SpeenBucks.org or jh@jwhh.co.uk to be put on the mailing lists, with the word 'include' in the subject line - they will keep you up to date via email on a monthly basis with all the latest village news and dates for your diary.

EDITOR: Jacqui Laing • ADVERTISING: Tom Dent

COMMITTEE: Gloria Holmes (Chair), Megan Chinn, Nick Wheeler-Robinson, Julie White

DESIGN & PRODUCTION: Jacqui Laing • PRINTED BY: PK Inprint (01494 452266)

CG Tree & Garden Services

Tree surgery & felling
Fencing
Hedge cutting, topping & turfing
Woodchips & firewood for sale



Free estimates • qualified staff • fully insured

Tel: 01494 562045
Mob: 07798 896380

Lloyds Wines



- Local supplier of high quality, rare and affordable wines from France, Italy, Spain and Portugal
- Free delivery
- All events catered for
- Supplier to The Hampden Arms and The Gate
- Sole UK importer for many regional wines never seen before in the UK
- 20 years experience sourcing from the best small growers
- Wine and Spirit Education Trust qualified
- Authorised wholesaler
- Personal and premise licensed



lloydswines.com sales@lloydswines.com 07547 645917

THE PAINTED KITCHEN COMPANY



PK
PAINTED KITCHENS.ORG

A: 5-7 DUKE STREET, PRINCES RISBOROUGH, BUCKS HP27 0AT
M: 07768 975 323 • T: 01844 346444 • W: PAINTED KITCHENS.ORG

WHAT'S ON

in Speen & North Dean

AUGUST

31st August	Speen Festival	Around the village	Cat Cook 488939
-------------	----------------	--------------------	-----------------

SEPTEMBER

1st-15th Sept	Speen Festival	Around the village	Cat Cook 488939
---------------	----------------	--------------------	-----------------

5th September	WI Way of Life in Rural South Africa	Speen Village Hall 7.45pm	Jenny Pearce 562333
---------------	--------------------------------------	---------------------------	---------------------

OCTOBER

3rd October	WI My Life in Crime, A Barrister's Story	Speen Village Hall 7.45pm	Jenny Pearce 562333
-------------	--	---------------------------	---------------------

4th October	Festival Wrap Party	Speen Village Hall 8pm	Cat Cook 488939
-------------	---------------------	------------------------	-----------------

25th October	Film & Food Night	Speen Village Hall	June Pilkington 488071
--------------	-------------------	--------------------	------------------------

NOVEMBER

2nd November	Speen Bonfire Night	Speen Playing Field	Clare Morris 488553
--------------	---------------------	---------------------	---------------------

7th November	WI Annual Meeting & Supper	Speen Village Hall 7.45pm	Jenny Pearce 562333
--------------	----------------------------	---------------------------	---------------------

16th November	SHH Christmas Market	Speen Chapel	Grainne Suter 488540
---------------	----------------------	--------------	----------------------

29th November	Words, Music & Comedy	Speen Village Hall	Adrian Farley 488749
---------------	-----------------------	--------------------	----------------------

DECEMBER

5th December	WI Goodies for Christmas	Speen Village Hall 7.45pm	Jenny Pearce 562333
--------------	--------------------------	---------------------------	---------------------

6th December	Speen Xmas Tree/Carols	Speen Playing Field	Clare Morris 488553
--------------	------------------------	---------------------	---------------------

7th December	Speen Christmas Fayre	Speen Village Hall	Margaret Groves 488180
--------------	-----------------------	--------------------	------------------------

List of Advertisers

A Cut Above, Alchemille Garden Design, Ashridge Home Care, Aston Hearing, Beechdean Farmhouse Dairy Ice Cream, Beauty by Georgi, Buckmoorend Farm Shop and Kitchen, CG Tree & Garden Services, Coles & Blackwell, Darvills Hill Farm, Foursquare Land, Fraser Morgan School of Dancing, Hamptons, Heppelthwaites, Hypnos Beds, Independent Living Consultants, JNP, John Bishop Garden Machinery, KJ Windows and Doors, Lloyd's Wines, Martin Holman's Pest Control and Services, MiHomecare, MR Collins, MWH Interiors Limited, Nick Higgins Forestry and Fencing, Nicki Thomas Web Design, Oven Loving, the Painted Kitchen Company, Paul Newman Ltd, PKInPrint, Rowena's Therapies, Rowlandscapes, SB Decorations, Speen Pilates, Speen Stores, Speen Vehicle Body Repairs, Springline Cars, The Smart Garden Company, Tudor Travel, Universal Care, Village Environmental Services.

SPEEN ENVIRONMENTAL ACTION GROUP

Jane Farley

We are all being reminded on a daily basis that we face huge environmental problems. The International Panel on Climate Change issued stark warnings in 2018 about global warming caused by an increased concentration of carbon dioxide in the atmosphere. Scientific studies into the natural world have revealed the increasing loss of animals, birds and insects while reports confirm that our oceans are being overfished and subject to huge amounts of pollution. Just recently a report has confirmed that hundreds of plants are becoming extinct some before they can even be identified and named.

Then there is the problem of single use plastics, and the pollution and waste associated with the way we produce and buy clothes and food. In fact the list is endless and all these issues are inextricably linked together. The chain of life is now threatened and however inviolable we think we are, we have to face the fact that we are at the end of this chain and ultimately our future depends on us preserving, conserving and fostering a healthy planet.

The consequences of decades of warm words and little action have led to significant suffering around the world and those people in this country who have faced floods in their homes already know something of the potential dire effects.

There are some wonderful organisations to look to for further information such as WWF, Friends of the Earth, Greenpeace, The Soil Association and Extinction Rebellion amongst many others. However, some of us in Speen have decided to follow the lead of many towns and cities in the UK to come together to try to find ways to both understand the issues and problems we face and to promote ways we can all make a difference. **However, daunting it all feels there is still time to make that significant difference.**

Speen Environmental Action Group as part of Green Speen would like to invite you to join us - do send us your name and email address so we can send you updated on ideas and forthcoming events.

Contact Jane Farley
jane.farley2@btinternet.com

EVENTS

Monday 2nd September, 7.00pm part of Speen Festival
Held in Speen Chapel.

A Speen Pollinator Awareness Evening – with talks on bees, others insects and what plants and flowers to grow to attract them. An opportunity to learn, buy plants and learn how to make reusable wax food covers.

Saturday 14th September 2019, 10pm-12pm
Held in The Festival Marquee.

Being Up Close and Interactive with Nature. An event for everyone - free flow nature workshops, lots of fun and learning together.

**12th September, 26th September
and every two weeks onwards:**
Held at Speen Chapel Café, Chapel Hill 10.30am – 2.30pm

The Refill Project

Cut down on the plastics in your house by bringing your empty clean containers to Speen Chapel Café to buy a selection of household and bathroom products. These are lovely environmentally-friendly products that you can refill as needed.

What can we all do at home now?

- How about changing to having a milk bottle delivery service rather than buying plastic milk containers from the supermarket?
- Keep and wash out some containers with lids to buy products from The Refill Project
 - Stop buying water in plastic bottles. Buy a BPA free bottle from supermarkets and take your own tap water each day. Bottled water is hugely more expensive and contains more microplastics we are told.
 - Try to buy fruit and vegetables loose and avoid plastic wrapping. Talk to your favourite supermarket about selling more loose products and keeping the price as low as packaged food. Go organic where possible.
 - Eat less meat and check which fish is sustainable at the time before buying.
 - Walk/cycle/car share where you can and do not leave engines running.
- Turn thermostats down and wear an extra jumper.
- Switch to a renewable energy supplier such as Good Energy.

SPEEN TREE PLANTING INITIATIVE

Jeni Fairey

You are looking at the simplest, cheapest and most effective method of carbon capture currently known to man.

I have been trying to "do my bit" to limit mine and my family's impact on the environment for a while now but after so much press coverage and also watching the recent Attenborough "Climate Change – The Facts" program I felt I needed to go further.

Despite some well-known deniers the Intergovernmental Panel on Climate Change states "Scientific evidence for the warming of the climate is unequivocal". The results of this are now widely reported including: warming and acidified oceans; shrinking ice sheets; sea levels rising; extreme weather events and ocean acidification. All of these could affect us at some time if we do not act now.

I know many of us feel similarly that we would like to do something to help but the problem seems too big. I feel that if we all do a little this will begin to make changes and also teach our children how to tread lightly on our planet.

“The UK needs 50 million new trees per year to hit net zero carbon emissions by 2050.”

Woodland Trust May 2019

My fantastic neighbours, the Downings, recently told me about an amazing project they are working on - to plant 2020 trees by 2020 to offset their personal carbon footprint. Tree planting is currently the simplest way to offset or recapture carbon emissions.

I have a tiny garden and planting trees is not possible for me personally, so I have offered to help the Downings with their project. From this stemmed the idea to start a 'Speen Tree Planting Initiative'. The idea is to try to increase the native tree population in this village so that Speen can be part of the climate crisis solution.

Would you like to help?

It would be great to keep a tally of all trees planted in Speen from the start date of Speen Festival: September 1st 2019, for a whole year.



Below are some ways you could help:

- If you plant a native tree (not hedge, as the tree needs to grow to full size to be most effective) email me the location and type of tree and quantity and I will add this to the record. I will keep the village up to date with progress at various times throughout the year.

- If you would love to have a tree in your garden or on your land but are unable to plant yourself or just need some help due to quantity, contact me and I will endeavour to get it planted myself or with a team of volunteers. (Tree, soil and any tree protectors to be purchased by yourself, I will supply labour and tools. Small trees up to max. 5 foot please and within the Speen and North Dean area).

- If you would like to help me with some tree planting (free keep fit!) please let me know and you can be part of the planting team. Families would be most welcome.

- If you would like to help the Downings, again let them or me know (tree planting is generally best carried out during the dormant period - November to January time, their planting date are currently tbc).

- If you have land and are feeling extremely philanthropic then the Woodland Trust can advise you on the best way to plant on your land, and the Downings would be happy to discuss their project with you if you wished to talk things through.

I really hope, along with some other "Green" projects developing in Speen at this current time, that we can all help in some way to make the changes necessary to limit climate change.

jeni.fairey@gmail.com

The Downings:
charlottcaverhill@yahoo.co.uk

We know how to deal with forests; we know how to store carbon in soil," says Richard Birdsey at Woods Hole Research Center. "These are strategies that are ready right now - things that can basically be deployed immediately."

National Geographic Jan 2019

Award winning Design

Extension • Conversion • New Build

SQ4RE



Jeremy Symondson
Foursquare Land Limited
Old Smithy, Great Hampden,
Buckinghamshire HP16 9RF
jem@4squareland.co.uk
tel: 01494 488877
mob: 07789 201616



SPEEN STORES

Your useful little shop

Freshly baked bread daily
Sub-Post Office
Fresh Fruit & Vegetables
Free Range Eggs
Homemade Cakes
Handmade Greetings Cards

Please visit the village website
www.speenbucks.org.uk
for opening hours and more information

Did you know eating better quality red meat less often
is better for you and the environment?

Eat Better, Buy Local

Delicious pork and seasonal lamb
grown in your village

Adrian and Charlotte Downing

Flowers Bottom Lane
Speen • Bucks • HP27 0PZ

t: 01494 488078

e: thepantry@darvillshillfarm.co.uk



**Darvills
Hill
Farm**

NORTH DEAN ROCK THE HILL

Craig Watson

The hill that rocked! (again)

On what turned out to be the warmest day of the year to date, 'Rock the Hill 2' made a welcome return. Starting at an earlier hour and with a larger audience than last year, there was an upgraded stage set and two different artists.

Perched on the hill between North Dean and Speen, those of us fortunate enough to live here, along with invited guests and the artists themselves, were once again awestruck by the dramatic, lush panorama this vantage point delivers.

To gently ease the audience in, London based 'Sambinha' treated us to a selection of sweet tones and melodies. The honey-voiced lead Francessa and her band performed a range of musical genres, ranging from jazz, swing, bossa nova, samba and contemporary popular music covers.

As the sun began to set came the eagerly awaited return of Alix Anthony, who left us in no doubt he was as pleased to return to the hill as we were to see him there again!



Kicking off with a brilliantly improvised twenty-minute rendition of the Jimi Hendrix classic 'Voodoo Chile', we all knew he meant business. This was just the start of a ballistic set that lasted almost three hours. The hill was well and truly rocked harder than it had ever been rocked before!

As the night moved on the audience closed in and upped the enthusiasm of their dancing. The 'walk out' section of the stage was claimed as a dance floor by many of the adoring, energetic revellers – spanning many generations.

Special thanks for making this a brilliant night to all those who attended, the Kent family for letting us party on the hill again, all the hard working, exceptional bar and BBQ staff, Anthony Cox for help with electrics, lights and sound engineering, plus young James Palmer for his tireless assistance on the gate and with the on stage smoke machine.



You can see more pics and some video footage of the event at www.northdean.org/gallery.

www.speenbucks.org.uk



TUDOR TRAVEL

Taking you there in style



**Providing luxury transport
for the local area**

Five and eight seat MPVs

22-34 seater midi-coaches

Group trips, corporate events, days out

Local and long distance

Fully insured and licenced

Private & business accounts welcome



01494 488887 / 07771 881245

info@tudortravel.co.uk

www.tudortravel.co.uk

SPEEN C of E INFANT SCHOOL & PTA

Helen Davies, PTA Co-Chair

We started the Summer Term off with the opening of Little Apples Preschool. It was a delight to welcome our new younger pupils on Aril 29th. The Pre-school is being brilliantly led and guided by Janice Beard and Karen Woodward. The Pre-school children all settled in remarkably quickly and are thoroughly enjoying being part of the school community. They have their own entrance and a dedicated space to allow free flow of play both indoors and outdoors. They are also able to join the older children in the main playground at specific times of the day. This combined play is enjoyed by all the pupils.

The term had only just got under way when the school was visited for their Ofsted Inspection. We are delighted to maintain our standard of GOOD. This outcome is a great achievement for the whole school community. It shows clearly that the school is being extremely well led under the new Executive Head Teacher and teaching staff and that the children continue to thrive, attain and progress under their care and guidance. The full report can be found on the school website.

Princes Risborough Upper school host many Multi skills sports tournaments where children from all year groups compete against other local schools and develop their sports skills. The children love the opportunity to show off their skills, with several successful wins throughout the term for Speen School. Year 2 children were invited to take part in the Risborough Gym and Dance festival in July. They performed an awesome dance to Tiger Feet.

A selection of children took part in the annual Golden Wellie competition at Bledlow Ridge School. We are thrilled that the children came 1st again (with an incredible score) and retained the trophy – on display in the school foyer. Well done.

The children have continued with the very popular theme weeks. This term they celebrated the fictional character Katie Morag. The pupils have also had a visit from the Bee Keepers Association which was followed up by making of a 5 star bug/insect hotel with the help of Jeni Fairey.

The whole school visited the National Film and Television school – a very exciting trip organised by John Rowe.



Continuing with what has now become a Speen School tradition, the children welcomed Dads/Grandads to school for a special event to celebrate Father's day. Each year there is a top secret mission, this year they made the most of our wonderful Forest school area, making a fire and cooking popcorn, playing hide and seek and inventing a carrier for eggs!

The PTA collaborated again with the playing fields committee to host the Mid-Summer Shindig. Guests were provided with a hog roast which gave them much needed energy for the barn dance that followed. It was a pleasure to see so many people young and old being put through their paces by the caller in the dance sets. After a little rest, Dan Dunford (our local DJ) provided us with an excellent disco set. Thank you to everyone involved and to those villagers able to come.



Towards the end of term we all enjoyed being part of the Speen Fete. The school and Pre-school collaborated to run the Tombola stall, which was as popular as ever. The highlight of the fete for most of us was watching ALL the children perform their country dancing routine.

Sports day was held on the last week of term and was a huge success on a lovely sunny day. Parents/grandparents/carers enjoyed watching the children take part in games devised by the Year 2 pupils. It was lovely to welcome back Mrs Nayna who came to support the children.

It is always a sad time of year as we say goodbye to our Year 2 children who are off to new adventures in their next schools. We wish them all good luck.

We have places available in reception class beginning this September. If you know of a friend, neighbour or relative in the surrounding area who may be undecided about their child's infant school place, please get in touch.



SPEEN VEHICLE BODY REPAIRS

Over 25 years of experience
of working to a high quality

- Classic car restoration
- Accident repairs
- Resprays
- Small repairs
- Horse-box trailers
- Motorcycles

Call Robin **07716 414633**

speenvehiclerepairs@gmail.com

BEECHWOOD FARM
HAMPDEN ROAD • SPEEN HP27 0RT

Oven Loving

BEST
NEW BUSINESS
2017
Awards & Recognition

"Your oven
cleaning
specialists"

"Booking online was
so easy"
Exceeded my
expectations, my
oven looks amazing.
Tina Kemp

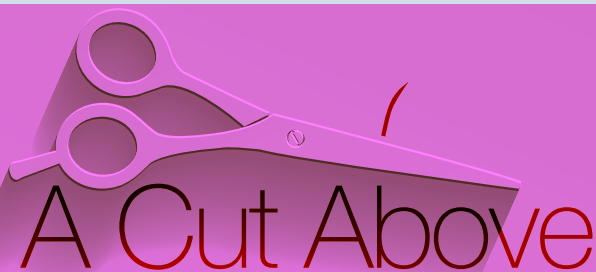
"I always look
forward to getting
my oven cleaned"
Tidy, respectful
team, professional
service. *Lee Neal*

Call
today

Book
online!

01296 320340 | ovenloving.co.uk

sayhello@ovenloving.co.uk | facebook.com/ovenloving



Have you discovered
your local salon yet?

A Cut Above is situated in the heart of Speen village
with easy parking. A unisex salon with a warm family
friendly atmosphere.

Chris Stiles and Cathy Wardle are experienced
professionals providing cuts, colour, styling and hair
care advice at an affordable prices.

For appointments: **Salon 01494 488 899**

Chris 07789 115 942 | Cathy 07753 858 611

A Cut Above, Over Speen Stores, Chapel Hill, Speen, HP27 0SL

We hope to see you soon!

MEAT THAT'S GOOD TO EAT

Buckmoorend
farm shop & kitchen



HOME REARED MEATS



LOCAL PRODUCE

KITCHEN OPEN AT WEEKENDS

Chequers Estate, Missenden Road
Butlers Cross HP17 0UT

SHOP: Wed-Fri 10-6 Sat/Sun 10-4

www.buckmoorendfarmshop.co.uk

CALL US: 01296 622 472

SPEEN CHURCH

Alastair Blundell

Although we continue to be in period of Interregnum as we search for a new minister for the Church, it has been a busy and rewarding time. We have welcomed many visiting ministers to preach, giving new perspectives on God's teachings, while several members of the Church have also stepped up to the pulpit and had a go, to great effect. We have begun our search for the new minister and we will keep the village posted on developments. We are in no rush and want to find someone who can not only lead the Church but also play an important role in village life and get involved.

Living up to our vision for the Church – a place where community meets – remains central to all that we do. Chapel Hill Kitchen is the most visible of our community activities and goes from strength to strength thanks to Kate Vale and her fantastic group of volunteer helpers. The Cafe is averaging takings of £350 a week which is tremendous and the profits continue to be divided between the four charities that the Church regularly supports, namely Agape Alive in India (www.agapealiveinindia.org.uk), LIFT in Ethiopia (www.lifeinfulltrust.org), Wycombe Homeless Connection (www.wyhoc.org.uk) and One Can Trust (www.onecantrust.org.uk). Without the support of the village on Thursdays to make the cafe a success all of these important charities would be worse off, so a big thank-you.

The new kitchen and hall also helped us stage a Men's and a Ladies breakfast in recent months. On both occasions we were fortunate to have villager Michael Spurr talk about his life working in the prison service for over 30 years. Michael retired as Head of the Prison Service in March this year and was able to give us a unique insight into a vital public service that has struggled in the recent age of austerity. He talked about life chances and the sadness that many prisoners come from poorer backgrounds and family breakdown, with men in particular denied a role model in life. But he also talked about hope and the role prisons play in rehabilitating criminals and preparing them for life back in society. The breakfasts were attended by over 50 people on both occasions and we hope to run another event later in the year.

Another important community goal for the Church is to support Jackie Coles and the team at Speen School. The School has its own vision to create a happy, vibrant and caring environment where every child can grow and flourish spiritually as well as academically, socially and emotionally. We are delighted that the children have visited the Church on several occasions this year, singing for the lucky visitors to the cafe one morning and recently to the Toddler group that



meets in the Church hall on Tuesdays. We were also delighted to exhibit a wonderful model the children had made of the Garden of Gethsemane over Easter. I am also pleased to announce that the children will be joining our service on 15th September which will take place in the Marquee on the Playing Fields on the final Sunday of the Festival.



Michael Spurr speaking at the Ladies' Breakfast on 5th July 2019

As we seek to be a Church that is active in the community, not one that simply opens its doors on Sunday morning, we have several regular events each week, in addition to the cafe on Thursdays.

- 'Open Door' on Saturday mornings which is a time for anyone to visit the Church and pray or request prayer.
- On Tuesday's we host a "tiddlers and toddlers" group for 0-3's and their parents/carers.
- Wednesday sees 'Time Out' when women

meet to study scripture, discuss wider issues and share a time of fellowship.

We have an active network of Home groups that meet throughout the week to explore faith, pray for one another and worship together. More details about the Church calendar of events can be found on our website: www.speenchurch.org

Starting on 25th September, we are planning to run an Alpha Course on Wednesday evenings at 8.00pm at the Church. Alpha is designed to help people who are curious to find out more about Christianity: www.alpha.org.uk/tryalpha. It is also a great opportunity for fellowship and the evenings start with homemade soups and cake from the kitchen.

In my last update on Church life, I mentioned the fundraising effort to help buy a new 4x4 vehicle for Moira McLure, North Dean alumnus and leader of the LIFT project in South Gondor, a remote and mountainous area of Northern Ethiopia where she works with mothers and children whose lives have been devastated by the Aids crisis, poverty and conflict. I am pleased to say that the \$30,000 need to buy Moira a Toyota Landcruiser has been achieved which is marvellous news. Again, thank-you to everyone who has supported Moira – the vehicle will make a huge difference to her work.

Finally, a big thank-you to everyone who came to the barbeque at the Fete in July. The Church has run the barbeque for a few years now but this time I think we set a new record, selling 108 burgers, 60 sausages and several Halloumi burgers. Hot but rewarding work!

Have a blessed summer.
Alastair Blundell

Speen Pilates

STRETCH • STENGTHEN • CONTROL



BOUTIQUE PILATES TRANSFORM YOUR FITNESS

Pilates can address structural imbalances, pain and difficulty with movement. It aims to enhance your posture, strength and flexibility, body tone, stamina and general fitness whilst releasing unnecessary tension.

ONE TO ONES ON STUDIO EQUIPMENT

One to one tuition offers accelerated learning and improvement, the Reformer uses spring loaded weights to improve your posture, strength and stamina leading to a toned body.

SMALL GROUP MAT CLASSES

Monday and Tuesday at 9.30am and 6.30pm
Thursday and Friday at 9.30am

I also offer bespoke classes for groups of up to 6 friends!

More details on the website
Booking essential

★ ★ ★

The Studio at Midmede, Chapel Hill, Speen
Amanda 07733 307475
amandapilates@btinternet.com
www.speenpilates.co.uk



SPEENHELPING HOSPICES

Grainne Suter

Annual Spring Lunch

The annual Spring Lunch at the Horse Trust on 2nd May raised £1,800 this year. It was a lovely day in a wonderful setting, with a delicious three course meal and chilled rosé. Thank you to all those who supported the event and bought the raffle tickets and the recipes, and a special thanks to the Horses Trust who provided the venue for free again this year.



Race Night

Runners and riders were viewed. Bets were placed and they were off! There was much cheering and excitement in North Dean Village Hall on 7th June as SHH ran a Race Night. We could not have done this without our 'Bookie' Al Bowyer, Honest Albert! Al kept the pace going all evening and in typical race meeting fashion, hopes were raised and dashed, money was won and lost, and lots of beer and wine was consumed! It was great fun and we raised a staggering £1,338. Thank you to Al and all the racegoers!

Then things got even better as we were given a cheque from Princes Risborough Rotary Club for £500. Many thanks to them, their donation is much appreciated.

Retro Party Night at Speen Festival

Our next event is a Retro Party Night, the first event of the Speen Festival 2019 on 31st August in the Marquee. Don your party gear for bingo, party food and seventies music at a glitterball disco. So, grab your dabber and learn the bingo lingo! Make sure to get your tickets before you go on holiday. We look forward to seeing you.

We will be selling the special 2019 Festival bunting again this year. The theme is of course, Peter Pan. From early August onwards look out for our stall. All donations, as always, will go to the Hospices fund.

Dates for Your Diary

31st August

Retro Party Night at Speen Festival
Ready, Steady, Go for Seventies Retro Fun!

9th October

Bridge and afternoon tea

16th November

Christmas Market at the Chapel

December

Door to door Carol Singing, the dates to be arranged.
Singers welcome!

SPEENVILLAGE HALL

Bill Groves, Chairman Speen Village Hall Management Committee

Well Prexit has finally happened - after some 60 years the Pre-School have finally said goodbye to the Village Hall. This has left a huge hole in our rental income and we are urgently exploring ways of filling this shortfall.

We now have a new men's yoga class and we are looking at starting Line Dancing and Table Tennis. If anyone has a spare full size table tennis table available please let me know.

The Village Hall is a welcoming place and offers very attractive rates to Villagers and Village Organisations. Future events include a Film & Food Night on Friday 25th October and on Friday 29th November a hilarious night of words, music and comedy presented by Ian McMillan and Luke Carver Goss. Our always popular Christmas Fayre will take place on Saturday 7th December. We are planning to redecorate the interior of the Hall in September so it will be bright and fresh for your bookings.



VILLAGE ENVIRONMENTAL SERVICES

DOMESTIC DRAIN SERVICES

Proprietors: Dennis Cook
Est. 1979

BLOCKED DRAINS?

FAMILY RUN BUSINESS SINCE 1979

BLOCKED DRAINS CLEARED

REASONABLE RATES

CCTV DRAIN SURVEYS

NO EXTRA CHARGE FOR EVENING, WEEKEND OR BANK HOLIDAY CALLOUTS

FULL PUBLIC LIABILITY INSURANCE

CALL US DAY OR NIGHT

24/7
CALLOUT
SERVICE

07850 635 844 01296 624 221 (MESSAGES)



mwh

design • refurbishment • construction



- Interior building work and alterations
- Bathroom design and installation
- Kitchen design and installation
- Full property renovations
- All work covered by comprehensive insurance and full guarantee

t: 01869 278885
m: 07866 738829

mwh | interiors

www.mwhinteriors.co.uk • info@mwhinteriors.co.uk

In April we held our regular Birthday Celebration meal at which we entertained members from other local WIs. One of our own members brought her collection of Chinese embroideries and explained some of the culture and techniques involved in their making. They were truly beautiful and very intricate.



Trying to make ourselves beautiful was the subject when Niki Hall came along to explain how to choose colours and styles for our clothes which would enhance our appearance and make us feel good about ourselves. The local charity shops might be receiving many long hoarded and rarely worn items!

The County Annual Meeting, held at the Waterside Theatre in April was an inspiring day. The main guest speaker was Simon King who entertained and educated about his work with every kind of wildlife here and abroad. He is

currently working on a new British Series for the BBC. As usual we were represented at the National Federation Annual Meeting where delegates passed two resolutions. The first, to try and pressurise for better local transport services and the second, to encourage young women to take the opportunity for life saving smear tests. The NFWI will now campaign on both these issues while we can all help to raise awareness.

Looking forward we are to find out about the help a dog can provide for a disabled person, Life in a Rural South African village and also what it was like to be a barrister defending criminals in court. In addition to our usual monthly meetings, we are holding a Garden Party at a member's home in July, visiting Waterperry Gardens in August and the Hearing Dogs headquarters in October.

As well as this we now have a Book Club, meet regularly at the Chapel Kitchen and are preparing to supply Tea and Cakes at Speen Fete. We are also looking to hold a six week beginners line dancing class in the Autumn. There is no time to be bored when you belong to Speen WI.

speenwi@gmail.com

SPEEN VS NORTH DEAN CRICKET MATCH

Nic O'Brien, Speen Captain

With the nation gripped by the recent World Cup success of the English cricket team, it's easy to overlook another hotly contested match, namely North Dean vs Speen, which took place on the 27th of May. It is hard to imagine a more quintessential English village scene than the setting at Bledlow Village Cricket Club, which for the second time hosted the encounter between the two teams. With the Chinnor Steam Railway running alongside the boundary and the Chiltern Hills in the background the stage was set for a thoroughly enjoyable day between the families of the two villages.



Captained by Jeremy Mudie, the North Dean team took to the field to bat first and compiled a formidable total. Pair after pair came to the crease and struck magnificent cricket shots. Although it was by no means one way traffic, as many of the Juniors from the Speen team showed enormous promise and took a number of superb wickets. Under the ever-watchful eyes of our umpires Charlie Pearson and Joe Luckett North Dean posted a highly competitive score of 377 runs after the allotted overs.

After a wonderful cricket tea, both teams returned to the field with the Speen team ready to commence their batting. A strong start from the Speen team initially suggested that we were poised for an exciting match,

however North Dean managed to slowly tighten their grip and prove they had posted an unassailable total, restricting Speen to 257 runs. No super-over required here. Star of the North Dean's bowling attack was young Jack Luckett, contributing with both economical bowling and several wickets. So congratulations to North Dean for winning the match.

The most endearing quality of this event is the participation of families across the two villages, dads' striding out to the crease with sons and daughters, being cheered on by the rest of their family and friends from the two villages. The match creates the opportunity for young cricketers to play in a competitive environment, to build their confidence and enjoy the support of their community. We look forward to continuing this event and watching our young talent blossom.

*30 Years -
Now that's a lot of ears*

ASTON
HEARING

CELEBRATING 30 YEARS!

*Amersham . Princes Risborough . Thame
www.astonhearing.co.uk . 01494 733840*

SPEENFESTIVAL2019

31st August - 15th September

Buy Tickets

The Box Office is now open!

You can now buy all your tickets and register your interest for free events at our online box office found at www.speenfestival.org

Whilst we do encourage you to pre-book your tickets online, each transaction does cost us, so please bulk buy where you can. Alternatively, please use the offline booking form printed here and leave it at Speen Stores or post it to our Box Office volunteers at the address given.

Volunteer

We need a long list of volunteers to achieve our two weeks of Festival events. If you are new to the village this is the perfect way to get to meet a few new people; if you are not new to the village you will know what a friendly, mad, fun-filled couple of weeks the Festival is - plus you will get a free ticket to an event! You need no experience or specialist skills (unless you are going to be our first aider) and it would really help if you offered your services now rather than during the festival! Have a look at the programme and identify the event where you might want to ...

- Sell interval ice cream? • Help marshal cars before or after an event? • Help check tickets on the door or sell extra tickets?
- Serve drinks at the Festival bar before, during or after an event? • Be a nominated first aider - if you hold a qualification?

Get in touch at volunteer@speenfestival.org and we'll put you in touch with the right person

Enjoy!

We look forward to seeing you in September, the Festival really is a special community event, come and be part of it.



Main Sponsor

Book online at www.speenfestival.org

or complete and submit the form below

DATE	EVENT	VENUE	TIME	PRICE	QTY	SUBTOTAL
Saturday 31st August	Retro Party Night	Festival Marquee	7.00pm	£15		
Saturday 31st August	Survival Night	Secret Location		£5		
Saturday 31st August	Photography Exhibition	Village Hall	12.00pm	£1 on the door		
Sunday 1st September	Photography Exhibition	Village Hall	12.00pm	£1 on the door		
Sunday 1st September	Speen Heritage Walk	KWIV Car Park	2.00pm	FREE		
Sunday 1st September	Yoga for Runners & Cyclists	Village Hall	7.00pm	£5		
Monday 2nd September	Pollinator Awareness Evening	Speen Chapel	7.00pm	£10		
Tuesday 3rd September	Yoga for the Deskbound	Village Hall	7.00pm	£5		
Tuesday 3rd September	Speen Wildlife in Close Up	Speen Chapel	8.00pm	£5		
Thursday 5th September	Let's Talk About Dementia	Chapel Hill Kitchen	1.00pm	FREE		
Thursday 5th September	Peter Pan	Festival Marquee	7.30pm	£12/£5		
Friday 6th September	Peter Pan	Festival Marquee	7.30pm	£15/£5		
Saturday 7th September	Tai Chi Demonstration	Speen Playing Field	11.00am	FREE		
Saturday 7th September	Peter Pan	Festival Marquee	2.00pm	£12/£5		
Saturday 7th September	Peter Pan	Festival Marquee	7.30pm	£15/£5		
Sunday 8th September	Funky Moves Dance Class	Speen School	9.30am	£8 Adult		
			10.45am	£5 4-9 yr olds		
			12.00pm	£5 10-16 yr olds		
Sunday 8th September	Aston Hearing Family Picnic	Speen Playing Field	11.00am	FREE		
Sunday 8th September	Bike Park Challenge	Ridgley's Field	2.00pm	£5		
Monday 9th September	Yoga for Healthy Living	Village Hall	7.00pm	£5		
Monday 9th September	Science Matters	Festival Marquee	7.30pm	£5 Adult		
				£2 Student		
Tuesday 10th September	Recuperative Yoga	Village Hall	7.00pm	£5		
Tuesday 10th September	Words & Music	Speen Chapel	7.00pm	£10		
Wednesday 11th September	Yoga for Healthy Living	Village Hall	2.00pm	£5		
Wednesday 11th September	Jazz Concert	Festival Marquee	8.00pm	£12		
Thursday 12th September	Questions Worth Asking	Festival Marquee	8.00pm	£5 Adult		
				£2 Under 16s		
Friday 13th September	'I'm Stiff as a Board' Yoga	Village Hall	12.00pm	£5		
Friday 13th September	Big Fat Quiz of the Eighties	Festival Marquee	7.00pm	15		
Saturday 14th September	Skulls Bats & Bee Bombs	Festival Marquee	10.00am	FREE		
Saturday 14th September	Dog Show	Ridgley's Field	1.00pm	£2 per class		
Saturday 14th September	Comedy Night	Festival Marquee	8.00pm	£10		
Sunday 15th September	Celebration on the Field	Speen Playing Field	10.00am	FREE		

Please complete and send to:

Speen Festival Box Office, c/o 3 Dairy Mede, Speen HP27 0TD with your cheque made payable to Speen Festival.

TOTAL: _____

Name: _____ Tel: _____ Email: _____

Address: _____ Postcode: _____

Comments: _____

☐ Please email my tickets ☐ Please post my tickets in the enclosed SAE.

All seating is unreserved. Please state if you have any special access, seating or parking requirements.



Like and follow us on
Speen Festival Facebook
for updates

2019 SPEEN VILLAGE FETE

Lesley Thorn-Davis, Chair Speen Fete

Well, it turned out to be another sunny afternoon for our annual village fete. It really was a great afternoon where all generations from the village came together to make the Fete such a success.

In the morning, other than the marquee being up, there was not a sideshow in sight; by 11am the field was beginning to take shape and by 12noon everything was set up and ready. It is true that "many hands make light work", and this was apparent with groups of men and women working hard to erect the gazebos, tables, chairs, bunting, signage etc. under the watchful eye of our Logistics Operator, Andrew Price. A real team effort indeed. Thank you to everyone involved.

I think the afternoon can be best told by the photographs taken. I am unsure how much money was raised but early indications are that we made a very good profit – more details to follow when the numbers are crunched a bit more.

We are looking for a new Chair for 2020.

Please see our advert below. Whoever takes on the role will be guaranteed some fun and friendship along the way - a great team awaits you!

*Lesley Thorn-Davis
Chair Speen Fete*

Congratulations to the Competition Winners:

Best Dressed Wild West House*

1st prize: Darvills Hill Farm

2nd prize: Woodside

3rd prize: Old Stocks

Sponsors choice: Monkenden

Special Pirate Decoration: Westerly

** Sponsored by Tudor Travel*

Colouring Competition (Under 6): Morris Bates

Colouring Competition (6-8): Georgia Price

Treasure Map: Edward Davies

Pirate Ship: Seb Khaira

Pirate Cupcakes: Lucy Morris



NEW CHAIR PERSON REQUIRED FOR SPEEN VILLAGE FETE 2020

Are you new to the village and want to get involved - this would be a great opportunity for you!

Do you want to have a go at organising an event - it would look good on your CV!

Do you have ideas about how our fete could improve? We'd love to hear them.

Are you creative? We need a theme ... new games ... who should be the chosen charity for 2020?

Our Fete meetings are fun - we always laugh and we generally have a nice glass of wine ...

If you think you might be interested please do contact our current Chair, Lesley Thorn-Davis who would be happy to chat through the role further. (488851)





A different kind of care company – providing around the clock care in your own home.



Our care company can help maintain your independence whilst being supported by our professional carers in your own home.

We provide care for people in many different situations. For those with a specific health condition or sometimes for people who simply don't feel safe alone anymore and want somebody with them for peace of mind and companionship.



Ashridge Home Care is a Buckinghamshire based business with over 30 years' experience in care. Our ethos is based simply on providing the type of service that we would want for our own loved ones.

Call us today | 01494 917 344

Email | info@ashridgehomecare.co.uk

Find us online | www.ashridgehomecare.co.uk

WILDLIFEWATCH

Peter Symonds

Spring/Summer 2019



My most unusual record over recent months was in mid-May when I came across a hare in College Plantation. I can only recall seeing one in there before. Whilst they are not a woodland species they can pass through woods as they move to fresh fields. However ten minutes later I came across a group of three adult hares together further down the same wood. I believe that the explanation for these unusual sightings was that the large field on the opposite side of Spring Coppice Lane was being mowed and these hares must have all sought refuge in College Plantation.

The main initial breeding season is largely over now but nevertheless there are birds still feeding young or incubating second broods. Our most spectacular bird, the Red Kite becomes increasingly common and has this year added a new garden in Abbotswood to its local breeding sites. Two young kites are about to fly the nest although a sibling fell from the nest to its death. In our own garden Moorhens have been added to the list of breeding species. Five young are now fully grown from six that were hatched and the parents may now be preparing for a second clutch. Several broods of Mallard have hatched both in our own garden and elsewhere in Abbotswood. Seven young have already flown the garden and five more ducklings are progressing well. Other broods have been eliminated by very bold and aggressive



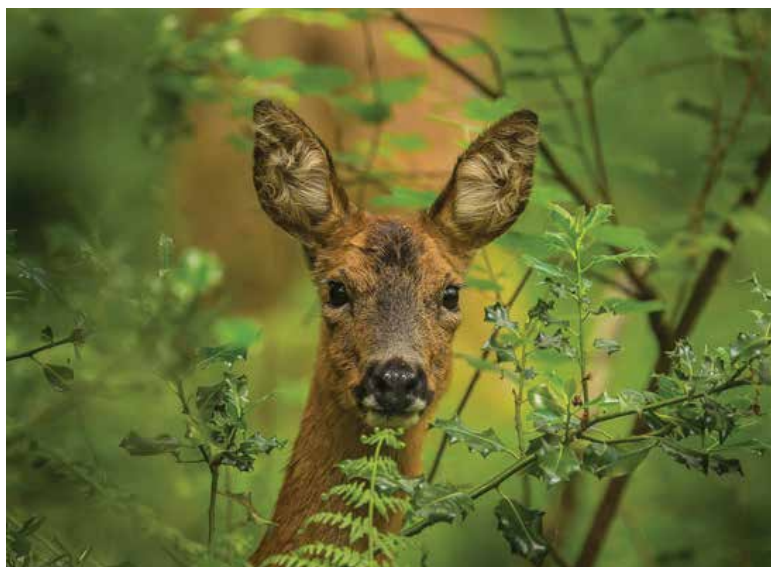
Magpies and a nest in our front garden with 20 eggs was taken probably by a fox on Easter Sunday. (The 20 eggs may well have been laid by two females because most single first broods are only usually up to 10-15 eggs.)

Within the woods local tawny owls have produced two young and other breeding successes include the local Great Spotted Woodpeckers, Nuthatches, Goldcrest and Marsh Tits. Great tits were busy feeding a family in the Speen Chapel Apple tree. There have also been losses elsewhere. Maureen Laing was sad to lose a Bullfinches nest with six eggs, right outside her bedroom window.

Other interesting records include a cuckoo in Grubbins Lane in April heard by Jean Whitehouse, two Kites bringing down a crow in North Dean seen by Anthony Palmer, whilst Jeremy Symondson reports several Yellowhammers using the feeder outside his Gt Hampden office. However the most unusual

local bird record was a Nightjar reported from Loosley Row in mid June.

In Speen four young Stag Beetles discovered by Chris Caris in rotting timbers in his front garden was an unusual record for this somewhat endangered species.



Please let me know of any interesting sightings
psymonds590@gmail.com / 01494 488016

20% of our sales happen behind closed doors*



Over 100,000 buyers and tenants search for their new home through Hamptons International every year – many are offered properties that will never be advertised on the open market or online.

So whether you are a property owner wishing to take a low key approach to marketing or a buyer or tenant wanting to ensure you don't miss out on the perfect property it's vital that you speak to Hamptons International. We can tell you about all the properties we have on the market – not just those you can see online.

Hamptons Great Missenden

Sales 01494 863 134 | Lettings 01494 355 029 | greatmissenden@hamptons-int.com
hamptons.co.uk



- Over 20 years experience

- All interiors and exteriors

- All wall coverings

- Free quotations

SB Professional
Painting & Decorating
Call Ben On:

07973 539495 or 01296 486470

References from completed work are available from Speen and surrounding areas

KING WILLIAM IV UPDATE

Andy Thompson

I am sure you are all wondering what has been happening since our last update in March. The KW4 Rescue Group have been working hard on fundraising and we have conducted a number of individual meetings with villagers who had registered an interest on our website in saving our village pub. We have been pleased with the response from these meetings, with over 65% of people we met pledging they would financially support a community funded purchase of our village pub.

As a next step we have appointed Christie & Co, a well-respected firm of licenced property specialists, to conduct a professional survey and market valuation



of the King William. Once we have their report, we should be in a good position to make an offer that reflects the current condition and local market for licenced properties, supported by our fundraising.

Hopefully, by the next issue of the Speen & North Dean News, we will have some positive news to share with you.

In the meantime, thanks to everyone for their patience and support.

KW4 Rescue Group
www.savethekingwilliam.org

BEECHDEAN DOWN ON THE FARM

Gill Kent

This year the weather has been 'unseasonal' for most months. After a mild winter, March was warm and spring-like, but summer didn't really arrive until July. However, farmers are accustomed to coping with things beyond their control! Brexit is being ignored until it takes place, but another problem has now appeared on the horizon which will affect everyone, not only farmers. Veganism is becoming fashionable

Man's lifestyle has evolved from hunter gatherers into sedentary populations relying on farmers to produce their food. Our teeth indicate that historically we have been omnivorous (canine teeth for meat eating and molars for grinding plants). Today, whilst producing the meat and vegetables that the population require, farmers have shaped the landscape of our western world which we inhabit and value.

In the Chilterns we have a variety of woods, pastures and arable fields. The topography largely dictates the nature of the crop. The thin chalky soils on the steep banks are only suitable for pasture, which is valued as a carbon sink in the battle against climate change. The arable fields are found in the valley bottoms, where the soils are more fertile, and on the tops of the hills where there is a clay cap. Woodland is found on the very poor areas which are unsuitable for farming.

Grassland cannot be maintained without grazing or cutting (in which case the cut grass will be fed to cows or sheep). If the grassland is left ungrazed it will revert to woodland. When cows and sheep disappear, so will our present Chiltern landscape, so please think carefully before deciding to become a vegan!



North Dean as it is now



Non grazed land reverting to woodland.



Beauty by Georgi

Local Beauty Therapist

Based in North Dean



CIBTAC and CIDESCO Qualified

Champaneys Trained

*Working from a fully equipped home salon
using industry-leading brands such as
Jessica Geleration, SNS, Sienna X, LVL Lashes & others*

For appointments please contact me on:

07775 504981

 @beautybygeorgi 



ROWLANDSCAPES

CREATIVE LANDSCAPE GARDENING

- Patios & paths • Brickwork • Planting & hedging
- Fencing • Driveways • Wildflower meadows
- Lawns • Garden maintenance • Tree surgery
- Woodland management • Agricultural fencing

Telephone: 01844 351919 **Mobile:** 07718 257104

Email: rowlandscapes@googlemail.com **Website:** www.rowlandscapes.com

A SMALL MEADOW IN NORTH DEAN

David Punter



The BBC ran an article in June about orchids on a “new” meadow on the Dunstable Downs. This reminded me that I’d been asked to write a little about our “meadow” on the “North Dean Downs”.

I’ll start by setting your expectations a little lower than the BBC. The “meadow” is a small area of our hillside garden in the village and is about 25m square, less than a quarter of an acre. It slopes about 30 degrees and faces south west so I call it the bank.

However, that small area now has around 70 species of wild flowers, including orchids of course.

There is little doubt that it was a grazing meadow a century ago but, when we moved in, it was mowed between several areas of scrub; hawthorn, bramble and wild rose. For many years we kept it part mowed and gradually cleared some of the scrub areas. Changes in the areas of mowed and scrub had shown some interesting wild flowers.

This, and an emerging fashion for wild flower spaces, with their benefits to wildlife generally, set us thinking whether we should convert our hillside lawn into a meadow. Avoiding mowing a hillside lawn every week all summer was not a small part of our plot. Keith, a plantsman, had worked on a meadow close to Roald Dahl’s house in Great Missenden and we asked him to come and advise on how we should affect a conversion. Surprisingly he said to just leave it and see what happens.

In fact, he explained that there were really two types of wild flower meadow. The one growing in Missenden, and indeed at the time in Wisley RHS gardens, were cleared, often ploughed or denuded by pigs, and seeded afresh with pretty wild flowers including annuals. The other type were natural areas of perennial wild flowers which may have just been waiting their chance to grow and flower. Ours had been waiting at least 30 years but he was convinced, with a little finger poking, that it was worth the experiment.

Of course, Keith was right, and we have enjoyed our bank of weeds ever since. Identifying, photographing, and cataloguing them in a small way, adds to the surprises a meadow regularly throws up. Evening primrose made a visit last autumn and this summer we probably have over a hundred pyramid orchids.

If you are tempted to try leaving your grass to grow there are a few things that we didn’t fully realize at the beginning ...

- The bank is, as I’ve said, mainly perennials but there are, of course, biennials and annuals and in any one year each will seem to be doing well or poorly depending on conditions. One perennial which has to be controlled is grass, which you may have been cultivating for years at the expense of the broad-leaved weeds. The only way we found of gradually reducing grass is to add some yellow rattle which will choke off the grass a little.

- Whilst yellow rattle works as an addition it is the only seed flower we have found to establish. Generally, we say the bank will grow what it wants not what we want. And it does a good job of it. Attempts to add seed, plug plants, and fully-grown plants have failed. More successful have been wild daffodil bulbs, they are small but very pretty and flower before most of the taller weeds; usually with the primroses and violets.

- One word of warning. Don’t let any fertilizers, topsoil or compost near the wild flowers as bright green grass will take over in weeks. That includes bulb planting; don’t use compost to bed them in. If they naturalize in the poor-quality soil typical of meadows that’s great. If they don’t, they won’t.

- These meadows are sometimes known as “flushing meadows” as they were used in the autumn to improve ovulation of the sheep for lambing. Nothing to do with tennis. The sheep ate the meadows down to a very short sward preventing any particular species becoming dominant. Since we have no sheep, we cut the knee-high hay on the bank down with a brush cutter in late September then gradually mow it right down before the winter short enough for the tiny spring plants to show.

- Finally, the good news is the meadow will attract all sorts of wildlife including bumble bees, many many butterflies including the blue species and all the seed eating birds like goldfinches. The bad news, sometimes, is that it attracts wildlife which like to dig up the meadow and eat the flowers like squirrels, rabbits and deer.

If you do decide to try a small meadow remember it’s wild and will win whatever you try to change. Good luck and enjoy.



Reliable, friendly service

Based in Upper North Dean

PLUMBING & ELECTRICAL SERVICES

**Taps • leaks • drains • loos
central heating & controls
bathrooms • kitchens
water softeners • water tanks,
Emergency spares and repairs**

Local to Naphill, Walters Ash, Lacey Green, Speen,
Hampden, Hughenden & North Dean

Paul Newman Ltd

01494 565573

Registered for electrics
and self certification

PIGOTTS RAISES THE ROOF

Jeremy Hamilton

Several Speen and North Dean residents joined the musicians of Pigotts to support their summer "Raise the Roof" ball on Saturday 20th July. Since it was built, entirely by volunteers, when Music Camp moved with Bernard Wheeler Robinson to Pigotts in the 1960s, the music barn has been the setting for amateur classical music making of all shapes and sizes. 50 years on it's still in great shape – although recent inspections have revealed that the leaking asbestos roof needs major attention. So since January this year, the Music Camp community has been fund-raising to cover the anticipated repair costs.

The "Raise the Roof" ball – held in the barn specially kitted out for the evening with roof-raising decorations - included a three course dinner cooked and served by volunteers, followed by musical after dinner entertainment and then dancing to the fabulous Pigotts Big Band. Nick Wheeler Robinson talked through the barn's original construction and proposed a toast to "the barn builders", whilst Sam Laughton, chair of the charity that supports the music making at Pigotts, revealed a fund-raising total to date in excess of £130,000. This magnificent achievement will enable not only repair of the roof, but other essential repairs which will ensure a drier and warmer future for musical activities at Pigotts in the years to come.

The evening itself contributed over £5000 towards the total and the ball organisers would like to say a big thank you to local friends (including Richard Troutt who kindly donated the main course) for supporting the event and not holding back on their dance moves!



SPEEN LADIES TENNIS

Alison Holmes

Everyone knows that Speen Tennis Court exists, and it is perhaps something we take for granted; seeing it on a daily basis and having your membership reminders sent through each year.

What you may not know is that there is a large group of us, mainly over 45 (50!) who, through a Whatsapp group, play once or twice a week. There is no commitment, it is play when you can or want to. We are not Wimbledon wannabees but a group who play and have fun. We normally play late Monday afternoons or mid-morning Friday but the days vary to suit the players. We normally manage to get a group of 4 for a doubles match but if there are more we swap in and out. It's all very informal.

I hope I have inspired you to have a go one day. If you are interested in joining the group please let Phillippa Lane know and she can get you added. I will reiterate there is no commitment or cost (apart from the annual membership fee - contact Philippa); just join in when you want.

SPEEN PHOTOGRAPHY GROUP

Christine Dunnington

Speen Photography group were out and about with their cameras last month. One of our members, Emma, said she'd been to the Summer Solstice gathering at Coombe Hill last year, and said what a fun evening it had been and suggested we all go along. It was very atmospheric, there was music and dancing, with families of all ages picnicking and enjoying the occasion, the weather was perfect too, which was a real bonus after all the recent wet conditions we'd been having.



Heppelthwaite

The Red Van Plumbers



Plumbing and Heating

Boiler Installations and Services

Oil | Biomass | Gas

01628 533 550

www.RedVanPlumbers.co.uk



The beauty of sleep



At Hypnos, comfort comes guaranteed. But whilst each Royally Approved bed is individually handmade by master craftsmen, using the very finest natural and sustainable materials, it is you who carefully designs the look of your bed and creates a majestic centrepiece for your bedroom. So, to be sure that you enjoy a beautiful night's sleep and awake feeling revitalised and refreshed, visit our Showroom and design a Hypnos bed that's just right for you.



HYPNOS®

THE MOST COMFORTABLE BEDS IN THE WORLD

Visit our Showroom: Monday to Thursday 9.00am to 5.00pm | Friday and Saturday 9.00am to 4.00pm

Hypnos Limited | Longwick Road | Princes Risborough | Bucks HP27 9RS

T: 01844 348200 | www.hypnosbeds.com

Alternatively, visit your local Hypnos Retailer:

Aylesbury Lucas Furniture **01296 486255** | **Gerrards Cross** Crystal Carpets & Furnishings **01753 889230**

High Wycombe Beadle Chrome Ltd **01494 523249** | **Thame** Greens Furnishings **01844 212560**

Hypnos is proud to be Carbon Neutral, complying with PAS 2060.

Martin Holman's Pest Control & Services



Qualified & Fully Insured



(M) 07510 290321

(T) 01296 622972

ratmano1@talktalk.net



@MHPEstControl

Nick Higgins
Forestry & Fencing
Contractor

m. 07768 383418
t. 01494 488835

45 Great Hampden Seasoned logs
Bucks available
HP16 9RJ



JOHN BISHOP *Est. 1972*
GARDEN MACHINERY

Sales & Service



HONDA
LAWN & GARDEN



Machine Hire

Scarifiers, Cultivators, Strimmers, Mowers
Hedge Trimmers

Blade/Chainsaw Sharpening & shear grinding.

We also stock a wide range of parts for various products.

Free Collection & Delivery



Tel No. 01494 563513

Mob. 07917 106004

1 Margaret Cottages, Northdean, High Wycombe, Bucks, HP14 4NH



SPRINGLINE
CARS PRIVATE HIRE

- Airport Transfers
- Events & Occasions
- London Trips
- Personal Service
- Owner Driver
- Local Knowledge

RISBOROUGH

01844 27 44 74

Know the voice, know your driver



K. J. WINDOWS
& DOORS

UPVC Windows and Doors

Conservatories

Fascia and Soffits

Bi-Folding Doors

Misted and Broken Units

Repairs

All work guaranteed

Call Keith on 07539 367200

kjwindows@icloud.com



UNIVERSAL CARE

always there



Whether it be 1 hour per week or full time,
it is a privilege to be trusted to care for you
or your loved ones

5 Reasons to use us -

- High standard of care
- Established over 3 decades
- All profits go to charity
- Directors have hands on involvement in the business
- Competitive charges

Please call on 01494 678811
or email care@universal-care.co.uk
www.universal-care.co.uk

WEDDING INVITATIONS **POSTCARDS**

PLACE CARDS **MENUS** **NOTEPAPER**

DATA MERGED LETTERS **NEWSLETTERS** **XMAS CARDS**

MEMBERSHIP CARDS **INVITATIONS** **NOTELETS**

FIXTURE CARDS **TAGS** **POSTERS** **ORDER OF SERVICE CARDS**

PK **gplex**
INPRINT MORE THAN JUST PRINT

DESIGN; ARTWORK; LITHO, DIGITAL & WIDE FORMAT PRINT
Pinstone Way, Tatling End, Gerrards Cross, Bucks SL9 7BJ
T: 01494 452266 • E: mail@pkinprint.co.uk
W: www.gplex.co.uk
Printers of Speen & North Dean News

CONTACT US NEXT TIME YOU NEED A PRINT QUOTATION
doing more with print



ROWENA's
(MCThA) (AoR)
NHS Register of Approved Reflexologists
Karuna & Reiki Master

Aromatherapy
Caci non-surgical face lifting treatments
Reflexology
Aqua detox
Indian head massage
Acupressure massage
Energy healing

Treatments carried out in
home based salon in Bryants Bottom

Call Rowena for more information
or a free consultation
Tel: 01494 488430
Mob: 07855 848261
rowena.j.templeman@gmail.com

Coles & Blackwell
Car Service & Repairs
Book online at:
www.colesandblackwell.co.uk

Quality car servicing and repairs
much closer than you think!

Where are we ? You will find us 300 metres down the small lane opposite the top
of Bradenham Wood Lane in Walters Ash, High Wycombe HP14 4UX

Established in 1959



Servicing
Did you know you can get your car serviced by us without invalidating your
manufacturers warranty? Legislation passed a few years ago means that you can
now choose any garage of your choice to service your vehicle.

Courtesy cars
We have a fleet of new loan cars at your disposal whilst we service your own car or
repair bodywork damage. Best of all - they are FREE OF CHARGE!
All part of the service you come to expect from Coles & Blackwell

air conditioning _____
mot testing _____
vehicle servicing and repairs _____
crash repairs _____
tyres, clutches & brakes _____
computerised diagnostics _____
batteries & exhausts _____

Open Monday to Friday 9:00am to 5:30pm
Saturday 8:30 am - 12:30pm

01494 563102



mi
home
care
Our Care, Your Way

We cater our packages to suit you as an individual. We don't substitute our high quality services, and nor should you expect any less for your health care. We are proud to have been operating and providing care services from our High Wycombe office for the past 27 years and we will continue to be consistent with the care we provide.

MiHomecare are the face of domiciliary care within the UK and have a long-standing history of providing care. What we do is people-centred and this is deeply woven into our rich history. We offer comprehensive care packages for all. Our staff wear our badge with pride and conduct themselves with the values that our company is built on. All our staff are fully trained and have enhanced DBS checks.

The range of services we offer:

- Visits (30 minutes / 45 minutes / 1 hour)
 - Live-in 24 hour care
 - Assisted bathing
 - Holiday cover
- Light household duties and shopping as part of care package

for more information or assistance please call:

0333 1219601 / 01494 488040

Email: highwycombe@mihomecare.com

www.mihomecare.com

Driven? Tenacious? Focused?

Ability to thrive under pressure? Infectious temperament and energy?

If this is you and you want to either make that first step on the care career ladder or want to take the next step, then we could be that step. We are always looking for talented individuals who are willing to learn and push their career forward. In return we could offer an excellent progression within your role, competitive pay and excellent benefits. Please feel free to contact us.





FRASER-MORGAN SCHOOL OF DANCING

***** Naphill Village Hall *****

RAD BALLET for ages 3+



For more information
please contact

01494 816539 or
07974 121081



Nicki Thomas Web Design

Creating bespoke websites
for a
wide range of businesses

Visit www.nickithomas.co.uk
to find out more...

Hedgerows, Studridge Lane
Speen, Princes Risborough
HP27 0SA

Tel 01494 488665

Email nickithomas@storecomput.co.uk

M. R. COLLINS

GARDEN CONSTRUCTION

Est 1979

Driveway, Paving, Brickwork, Fencing
Groundworks, Excavations, Operated
digger hire.

We specialise in Block paving and all
types of slab laying Indian stone and
concrete offering a start to finish service
inclusive of excavations muck away,
supply and fix.

For estimate Phone: 01844 346360
Mobile: 07774 256732



Your Local Mobility Shop Independent Living Consultants



Small aids for everyday
independence!

Larger items for
mobility and comfort.



Call us, or visit our showroom :

01844 27 30 50

10 Woodway, PRINCES RISBOROUGH HP27 0NN

www.IndependentLivingConsultants.co.uk

WHO'S WHO

Bucks County Council - Member for Lacey Green	Carl Etholen	01494 564771
Hughenden Parish Council - Chairman	Roger Beavil	01494 715296
Lacey Green Parish Council - Chairman	Cathryn Davies	01844 342800
Lacey Green Parish Council - Councillor for Speen Ward	Roger Craft	01494 488343
North Dean Good Neighbours	Judith Broadley	01494 563178
North Dean Village Hall - Bookings Secretary/Fete	Jez Wicks	01494 563517
North Dean Village Hall - Chair	Alison Kent	ath@bfarms.co.uk
Pigotts 7 '48' Musical Evenings	Nick Wheeler-Robinson	01494 562167
Riding for the Disabled	Gloria Holmes	01494 488420
Speen Good Neighbours	Pat Richardson	01494 488627
Speen & North Dean Guides	Pauline Hall	01494 488372
Speen & North Dean News - Advertising	Tom Dent	01494 488943
Speen & North Dean News - Chair	Gloria Holmes	01494 488420
Speen & North Dean Toddler Group	Natasha Kann	07737 638618
Speen Baptist Church - Church Administrator	Sandy Mitcheson	01494 488875
Speen Fete - Chair	Lesley Thorn-Davis	01494 488851
Speen Helping Hospices - Secretary	Maureen Laing	01494 488397
Speen Heritage Group - Chairman	Peter Symonds	01494 488016
Speen Marquee	Greg Cook	01494 488939
Speen Playing Fields - Chair <i>playingfields@speenbucks.org.uk</i>	Clare Morris	01494 488553
Speen C of E Infant School - Head	Jacquie Coles	01494 488321
Speen School PTA - Co-Chair	Helen Davies	01494 488847
Speen Stores	Alison Templeman	01494 488258
Speen Tennis Court - Secretary	Philippa Lane	01494 488453
Speen Village Hall - Bookings	Sue Taylor	01494 488500
Speen Village Hall - Chairman	Bill Groves	01494 488180
Speen WI - Secretary	Jenny Pearce	01494 562333
St John's Parish Church	Revd Tony Bundock	01844 347741
Wycombe District Council - Member for Lacey Green& Hampdens	Cllr. Graham Peart	01494 488327

BEECHDEAN

Farmhouse Dairy Ice Cream

Made from fresh Jersey milk
and rich double cream

Ice Cream for Every Occasion!

- Made Fresh on the farm
- No artificial colourings or additives used
- Suitable for vegetarians
- Gluten free



Beechdean Dairies, Old House Farm, North Dean, High Wycombe, Bucks HP14 4NL
01494 563980 | www.beechdean.co.uk



@BeechdeanGroup



Beechdean Group



Homes of Distinction

If you are looking for a very special property or have one that would benefit from our award winning marketing then we are ready to act on your behalf.

01844 343131
Princes Risborough Office
01494 711677
Hazlemere Office

FINE & COUNTRY
fineandcountry.com™