

THE SPEEN & NORTH DEAN *News*



Winter 2018
Issue 73



simply
beautiful
gardens

Alchemille has been designing and creating beautiful, innovative, inspirational outdoor spaces since 2004. From urban courtyards to country estate gardens, we can make the simply beautiful garden of your dreams a reality.

FROM CONCEPT TO CREATION

01494 488072 • 07909 936718 • design@alchemille.co.uk

www.alchemille.co.uk

Get smart in **your** garden

From comprehensive plant care advice, to regular maintenance or a one-off project, our experienced team is ready to smarten up **your** garden.

For more information contact
Andy Merriman on

07827 290770



Working in association with Alchemille Garden Design

Welcome! to the Winter edition of The Speen & North Dean News. We hope you have all ordered plenty of oil and are ready to bed in for what is predicted to be the coldest winter in ten years!

It's hard to believe that it's time to gear up for Speen Festival 2019, but September will be here before we know it, so if you have any ideas for an event you'd like to run for the Festival, or would like to volunteer in a behind-the-scenes capacity, do get in touch with Cat Cook soon!

Do read the article on p17 about the future of the King William IV, and sign up to show your support. We need our pub back!

We're always looking for new, fresh ideas here at The Speen & North Dean News, and are also keen to get some input from the children and teenagers of the villages, so if you have either and can persuade them to contribute we'd love to hear from them.

Warmest wishes for the festive season, and do keep sending in your articles and pictures - we couldn't do it without you!

Jacqui Laing

Contents

| | |
|---------------------------------|----|
| What's On | 5 |
| Speen Infant School | 6 |
| Tiddler and Toddler Playgroup | 6 |
| Welcome to Mrs Coles | 7 |
| Speen Bonfire | 9 |
| Speen Festival | 11 |
| Speen Church | 13 |
| Speen Village Hall | 15 |
| Wildlife Watch | 15 |
| Lacey Green Parish Council News | 17 |
| King William IV Update | 17 |
| Speen Helping Hospices | 19 |
| North Dean Gin Night | 21 |
| Speen Heritage Group Quiz Night | 21 |
| North Dean Village Fete | 23 |
| Speen Playing Fields | 25 |
| The Horse Trust | 27 |
| Speen Garden Group | 29 |
| Speen vs North Dean Golf | 29 |
| Speen WI | 31 |
| Who's Who | 38 |

Next Edition

Copy for the next edition is **due by 10th March** with a planned publication date of early April. Please send photos separately from text, together with captions and a consent form (downloaded from the SNDN website www.speenbucks.org.uk) if any photos are of children. Please send to editor.sndn@speenbucks.org.uk.

With grateful thanks

To Wycombe District Council, Hughenden Valley Parish Council, Speen Stores Charity Committee and all our advertisers for their support of this magazine.



Welcome Packs

The Good Neighbours scheme was set up many years ago and is now run by Pat Richardson in Speen and Judith Broadley in North Dean. One service is to provide new residents with a Welcome Pack of village information, so if you know of anyone new to the area please call: Pat Richardson (Speen) 01494 488627 or Judith Broadley (North Dean) 01494 563178 cooljude@btopenworld.com

Village News

If you are not already signed up to The Village Messenger and The Village Diary, do email Village@SpeenBucks.org or jh@jwhh.co.uk to be put on the mailing lists, with the word 'include' in the subject line - they will keep you up to date via email on a monthly basis with all the latest village news and dates for your diary.

EDITOR: Jacqui Laing • ADVERTISING: Tom Dent

COMMITTEE: Gloria Holmes (Chair), Megan Chinn, Nick Wheeler-Robinson, Julie White

DESIGN & PRODUCTION: Jacqui Laing • PRINTED BY: PK Inprint Ltd (01494 452266)

Award winning Design

Extension • Conversion • New Build

SQ4RE



Jeremy Symondson
Foursquare Land Limited
Old Smithy, Great Hampden,
Buckinghamshire HP16 9RF
jem@4squareland.co.uk
tel: 01494 488877
mob: 07789 201616



SPEEN STORES

Your useful little shop

Freshly baked bread daily
Sub-Post Office
Fresh Fruit & Vegetables
Free Range Eggs
Homemade Cakes
Handmade Greetings Cards

Please visit the village website
www.speenbucks.org.uk
for opening hours and more information

Did you know eating better quality red meat less often
is better for you and the environment?

Eat Better, Buy Local

Delicious pork and seasonal lamb
grown in your village

Adrian and Charlotte Downing

Flowers Bottom Lane
Speen • Bucks • HP27 0PZ

t: 01494 488078

e: thepantry@darvillshillfarm.co.uk



**Darvill's
Hill
Farm**

WHAT'S ON

in Speen & North Dean

DECEMBER

| | | | |
|---------------|--|--------------------------------|--------------------------|
| 1st December | Christmas Fayre | Speen Village Hall 2pm | Margaret Groves 488180 |
| 2nd December | Speen School Christmas Fair | Speen Infant School 11.30am | Mei Price 488155 |
| 6th December | WI Stewart Linford The Story of the Windsor Chair | Speen Village Hall 7.45pm | Jenny Pearce 562333 |
| 7th December | Christmas Tree Lighting & Carols | Speen Playing Field 6pm | Clare Morris 488553 |
| 7th December | North Dean Italian Wine Tasting | North Dean Village Hall 8pm | Jez Wicks 563517 |
| 19th December | Christmas Carols + wine & cheese | North Dean Village Hall 8.30pm | Alison Kent 07887 963450 |
| 21st December | Speen Community Bar | Speen Village Hall 7pm | Amanda Dobbs 488887 |

JANUARY

| | | | |
|--------------|-------------------|---------------------------|---------------------|
| 10th January | WI Social Evening | Speen Village Hall 7.45pm | Jenny Pearce 562333 |
|--------------|-------------------|---------------------------|---------------------|

FEBRUARY

| | | | |
|--------------|--------------------------------|---------------------------|---------------------|
| 7th February | WI The Life of Andrew Carnegie | Speen Village Hall 7.45pm | Jenny Pearce 562333 |
|--------------|--------------------------------|---------------------------|---------------------|

MARCH

| | | | |
|-----------|--------------------------------|---------------------------|---------------------|
| 2nd March | Speen School PTA Safari Supper | Around the village | Naomi Proudlove |
| 7th March | WI The History of Royal Flying | Speen Village Hall 7.45pm | Jenny Pearce 562333 |

APRIL

| | | | |
|-----------|--------------------|---------------------------|---------------------|
| 4th April | WI Birthday Supper | Speen Village Hall 7.45pm | Jenny Pearce 562333 |
|-----------|--------------------|---------------------------|---------------------|

SEPTEMBER

| | | | |
|---------------|----------------|--------------------|-----------------|
| 1st-15th Sept | Speen Festival | Around the village | Cat Cook 488939 |
|---------------|----------------|--------------------|-----------------|

List of Advertisers

A Cut Above, Alchemille Garden Design, Allied Healthcare, Ashridge Home Care, Aston Hearing, Beechdean Farmhouse Dairy Ice Cream, Beauty by Georgi, Buckmoorend Farm Shop and Kitchen, CG Tree & Garden Services, Coles & Blackwell, Darvills Hill Farm, Foursquare Land, Fraser Morgan School of Dancing, Hamptons, Heppelthwaites, Hypnos Beds, Independent Living Consultants, JNP, John Bishop Garden Machinery, KJ Windows and Doors, Lloyd's Wines, Martin Holman's Pest Control and Services, MR Collins, MWH Interiors Limited, Nick Higgins Forestry and Fencing, Nicki Thomas Web Design, Oven Loving, the Painted Kitchen Company, Paul Newman Ltd, PKInPrint, Rowena's Therapies, Rowlandscapes, SB Decorations, Speen Pilates, Speen Stores, Speen Vehicle Body Repairs, Springline Cars, The Smart Garden Company, Tudor Travel, Universal Care, Village Environmental Services.

SPEEN C of E INFANT SCHOOL & PTA

Helen Davies, PTA Co-Chair

The start of the autumn term was very exciting for both children and parents of Speen School as we welcomed our new Head Teacher, Mrs Jacquie Coles. The children have all settled quickly back into school life after their long summer break and we welcomed the new children in reception.

The children celebrated World Book Day by dressing up as their favourite book character – there were Dinosaurs, rabbits, fairies and monkeys, to name a few, walking to school that day. They were encouraged to bring their most treasured book to school to share with everyone. There was also a colouring competition which was won by Seb Khaira, Ned Green, Nazareth Nash, Woody Rowe.

We are very lucky to be situated in historical surroundings. With this in mind the children had a wonderful theme week on the topic 'SPEEN.' They walked through the village learning about the history of the oldest buildings, and some of the newest. A visit to the chapel was arranged on Thursday morning where they were able to not only learn about the history of the chapel but enjoy a biscuit at Chapel Kitchen. With all the information amassed, by the end of the week they could have won any quiz about Speen.

Our Harvest Thanksgiving took place on Monday 8th October at St Johns Church. We welcomed Speen pre-school to the service this year, which was led by Canon Tony. Sam Laughton kindly agreed to accompany the excellent singing on the piano. I believe the promise of "Paint box" being sung was too much to refuse! The children's gifts of food and provisions were kindly donated to Saunderton Lodge.

Speen School hosted its first Open Morning of the year and welcomed prospective parents to view the school and forest school and to meet Mrs Coles. It was a very encouraging turn out and we look forward to the next Open Morning at 9.30am to 11.30am on Tuesday 27th November. Please let your friends and family know about our fantastic village school.

The PTA were delighted to receive a very generous donation from the Speen Fete Committee at the start of term, which is always much appreciated. The PTA used this donation, along with funds raised throughout the year, to purchase a new cooker for the school, which was put promptly to use by the cooking club.

Our Christmas fair will be held on Sunday 2nd December from 11.30 am to 2.00 pm. It is a festive event for all the family, and always lovely to see past and present pupils enjoying themselves and often helping on the stalls. There are lots of games, crafting stalls, shopping and a festive raffle. Lunch will be available for pre-order. Please contact Mei Price (488155) for further information.

Looking further ahead the ever popular Safari Supper is being held on Saturday 2nd March. An annual event not to be missed and reputed to be the village event of the year. More information in the New Year.

We would like to take this opportunity to thank you all for the continued support of Speen School. Not only in supporting our many and various events throughout the year but to Governors, reading volunteers and midday supervisors.

TIDDLER & TODDLER PLAYGROUP

Natasha Kann

We said a fond farewell to a few of friends at the end of the summer term who have now started 'big' school. It was sad to see them leave but equally wonderful to welcome lots of new families to the playgroup! We have had a fabulous start to the term with lots of familiar faces returning to the playgroup, although there are now a few less 'tiddlers' as most of them are now toddling!

The children have been enjoying autumn craft making and playing with leaves as well as more recently making poppies for Remembrance Day. We will soon be preparing



for Christmas by making decorations, Christmas cards and advent calendars in preparation for the big day!

We welcome any new families with Tiddlers or Toddlers who would like to join us. We meet every Tuesday morning in the Speen Chapel, 9:30-11:30 during term time. There is always lots of fun to be had enjoying the toys, jigsaws, playdough, craft activities as well as singing and story time. Grown ups can enjoy a cup of tea or coffee and a chat with other local mums and dads while the children enjoy some healthy snacks. Our last session this term will be on Tuesday 18th December, where we will be having an end of term party!

WELCOME TO MRS COLES

New Headteacher at Speen CofE Infant School



The start of the new term at Speen School meant the start for our new Headteacher, Jacqui Coles. With very big shoes to fill following Denise Nayna's retirement, Mrs Coles has embraced her new role and settled into Speen School life very well.

Being a very large part of the Speen and North Dean Community, we thought you might like to know a bit more about our new Headteacher.

Why did you become a teacher?

I have always loved working with children. They make me smile with the things they say and their love of life is infectious!

How long have you been a Headteacher?

I have been Headteacher at Curzon CE Combined School in Penn Street for twelve years now.

What appealed to you about Speen School?

I fell in love with Speen School immediately when I looked at the school website. It's just like a mini Curzon! The Christian values, the love of utilising the outdoors for learning, the key focus on children and the way it is the heart of the local community. I wasn't wrong in making the choice either – Speen School is a happy school with a lovely team of staff. The school has just been sent a congratulatory letter from the Rt Hon Nick Gibb for being in the top 3% primary schools

for its phonics results last Summer. This is credit to Denise Nayna and the staff for all their work on Phonics last year.

What ideas do you have for the future at Speen School?

Do watch the video on our website www.speen-cofe.bucks.sch.uk as that tells you about my wish to show other people that Speen School is like a hidden treasure that everyone should know about! It shouldn't be a secret, but a key mark on the local map.

There are a large number of people in Speen and North Dean who are vintage car enthusiasts, I am sure your wonderful Morris Minor has been seen while on your way to and from work, are you also a vintage car fan?

My husband is definitely a classic car fan and we actually have 3 classic cars, two of them Morris Minors! The black 1955 split screen Morris that I drive has been in my family since it was new - owned first by my grandparents, then by my Uncle who knew that my husband Simon would take good care of it when he died.

The PTA has already started organising the social events for the coming school year. As these are so well supported by the community I know many of you will get your chance to say hello and welcome Jacqui to our fabulous villages in person. I am not sure that she is aware of the shoes she is filling regarding Dancing Headteachers - only time will tell ...



SPEEN VEHICLE BODY REPAIRS

Over 25 years of experience
of working to a high quality

- Classic car restoration
- Accident repairs
- Resprays
- Small repairs
- Horse-box trailers
- Motorcycles

Call Robin **07716 414633**

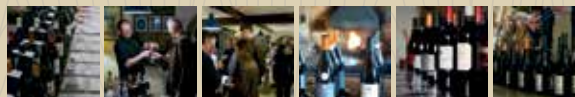
speenvehiclerepairs@gmail.com

BEECHWOOD FARM
HAMPDEN ROAD • SPEEN HP27 0RT

Lloyds Wines



- Local supplier of high quality, rare and affordable wines from France, Italy, Spain and Portugal
- Free delivery
- All events catered for
- Supplier to The Hampden Arms and The Gate
- Sole UK importer for many regional wines never seen before in the UK
- 20 years experience sourcing from the best small growers
- Wine and Spirit Education Trust qualified
- Authorised wholesaler
- Personal and premise licensed



lloydswines.com sales@lloydswines.com 07547 645917

THE PAINTED KITCHEN COMPANY



PK
PAINTED KITCHENS.ORG

A: 5-7 DUKE STREET, PRINCES RISBOROUGH, BUCKS HP27 0AT
M: 07768 975 323 • T: 01844 346444 • W: PAINTED KITCHENS.ORG

SPEENBONFIRE

Peter Symonds, on behalf of the Playing Fields Committee

The 2018 bonfire proved to be a very last minute production. The SPF committee were initially faced with new insurance requirements which could not be achieved on our playing field and clearly the event cannot take place without proper insurance cover. Duncan Wilson salvaged the situation with the help of his broker and many hours were spent complying with insurance and Risk Assessment requirements.

Plans were progressed for a Jurassic Park theme featuring a dinosaur engulfed by flames with lighting, smoke and music and the concept was pulled together with the support of the whole committee and numerous villagers who stepped in to help run the bar, the BBQ and manage the gate. Advanced works involved organising our scrap wood and polythene deliveries and I spent two days painting a giant Tyrannosaurus Rex head onto large sheets of plywood. Village craftsmen then spent two days converting an ugly pile of waste into a replica of the gates to Jurassic Park that would have been the envy of Pinewood Film Studio.

After judging a variety of Dinosaur “guys” the fire was lit and it burned well to a finale where the dinosaur crashed to the ground enveloped by flames. This was followed by another excellent firework display from Keith Jones that was thoroughly enjoyed by a capacity crowd. Early feedback suggests that the bonfire was regarded as probably our best design yet and the event was possibly our most profitable to date. This is good news following the huge expenditure on the new play equipment for the field, which had almost emptied our bank account. All in all, despite all the last minute planning, it was a good night out and a great result for the organisers and helpers.

Video footage of the last three years’ events can be found here: <https://www.speenbucks.org.uk/speen-groups/speen-playing-fields/speen-bonfire-video-archive>

We hope to see you again next year.





The beauty of sleep



At Hypnos, comfort comes guaranteed. But whilst each Royally Approved bed is individually handmade by master craftsmen, using the very finest natural and sustainable materials, it is you who carefully designs the look of your bed and creates a majestic centrepiece for your bedroom. So, to be sure that you enjoy a beautiful night's sleep and awake feeling revitalised and refreshed, visit our Showroom and design a Hypnos bed that's just right for you.



HYPNOS®

THE MOST COMFORTABLE BEDS IN THE WORLD

Visit our Showroom: Monday to Thursday 9.00am to 5.00pm | Friday and Saturday 9.00am to 4.00pm

Hypnos Limited | Longwick Road | Princes Risborough | Bucks HP27 9RS

T: 01844 348200 | www.hypnosbeds.com

Alternatively, visit your local Hypnos Retailer:

Aylesbury Lucas Furniture **01296 486255** | **Gerrards Cross** Crystal Carpets & Furnishings **01753 889230**

High Wycombe Beadle Chrome Ltd **01494 523249** | **Thame** Greens Furnishings **01844 212560**

Hypnos is proud to be Carbon Neutral, complying with PAS 2060.

SPEENFESTIVAL2019

1st-15th September

Cat Cook - Festival Co-ordinator

We have no theme, we have no branding, we have no sponsors, we have no programme of events, but we will have a Speen Festival in September 2019!

What has been established is that there is a team of willing villagers prepared to step into the same organisational shoes that delivered Speen Festival 2017. So I'm happy to co-ordinate activities once again - we just need to find ourselves some events (and event organisers)!

Speen Festival was first run in 2001, based on a festival founded by villagers Martin and Marjorie Stockley in 1999 to celebrate the passing of the Millennium. Every two years it has continued to be a celebration of our local area and the creative, artistic, theatrical and musical talents of its inhabitants. Whilst there are some recurring favourite events, the Festival evolves every time dependant on the emerging skillset, inspirations and availability of the changing villagers.

Due to careful curating of the Festival by Sam and Kate Laughton during their years at the helm, we entered 2017 on a solid financial footing and a very successful festival (bolstered by the bar proceeds) left us well placed financially. Whilst we didn't generate enough to buy the pub, we were able to donate to many chosen charities. The recipients were either local organisations who had supported the Festival through use of their facilities, like Speen School, Speen Village Hall, Speen Chapel and the Playing Fields, or they were the chosen charities of

those villagers who created some brilliant events for us like Speen Helping Hospices, Agape, Medical Detection Dogs, Ambitious about Autism, LiFT and the Alzheimer's Society, and we also chose to support the ongoing building of the Music Room at St John's School, having heard from the architect at our previous Festival.

So, what do we create for 2019? Sam Laughton has agreed to initiate a musical show as our starting point - but as yet we don't know what that is to be - so there's still the chance for you to write one, like Louise Wilson did for us last time! Over to you ... we need your ideas, enthusiasm, skills, contacts and input!

All those who have said they are happy to help organise as the core team would be very happy to share the task, train an apprentice or even step aside! It is such a great opportunity to use a skill, learn a new one and meet other villagers. So please do get in touch and let's start the conversation.

The monthly community pubs will become 'Festival Pub Nights' from January and they represent our monthly organisational stepping stones; getting a draft programme of events will be the first task.

Block out 1-15th September in your diary, you won't want to miss Speen Festival 2019. Do chat to those in your area of interest or drop me a line at admin@speenfestival.org. We look forward to hearing from you.

Core team - Current points of contact

Cat Cook - Coordinator & Marketing
Tom Dent - Administrative Support
Nick Knight - Treasurer
Jacqui Laing - Artwork/Programme
Nicki Thomas - Website
Steve Binder - Facilities (Chairs)
Andrew Price - Bar Services
Sue Taylor & Christopher Boyce - Box Office/Front of House
Philip Suter - Sponsorship
Team Brownridge - Sound & Lighting

We will need:

Event organisers
Ice cream sellers
Car Park attendants
First Aiders
Advertisers & Sponsors
Front of house
Advertising distributors
Photographer
Social Media & copy writers
Programme sellers



Have you run a Festival event before? Do you want to do it again?
Do you have an idea for an event but no idea how to make it happen?
Have you seen an event elsewhere that we should try to recreate?

Then please get in touch ..

ASTON HEARING

01494 733840

Amersham

01844 396057

Thame



Look out for our **Hear Today Events**

Monthly Drop-in Coffee Mornings
1st Tuesday & 1st Friday of every month
in Thame and Amersham

Qualified advice - Personal experiences

Talks - Refreshments

Support for all hearing concerns

see www.astonhearing.co.uk for details or call

01494 733840 to register your interest

and we will keep you informed.

All welcome

Free of charge



European
audiologist
of the **year**
2016

***Services available
in Amersham
& Thame***

Hearing Consultations

Latest Hearing Technology

***Ear Wax Removal
using Micro-suction***

***Children's
Hearing Screening***

Ear Protection & Advice

www.astonhearing.co.uk



SPEEN CHURCH

James Entwisle

Au revoir to Heather McIntyre

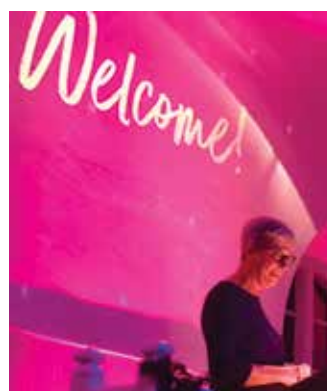
In true Speen style the cake was plentiful on Sunday 14th October as we gathered to celebrate Heather's ministry and contribution to our community over recent years. There is much to be thankful for, perhaps most notably at the two extremes of our age spectrum. Heather has served as a governor of Speen School, kept close contact with the pre-school and worked alongside the Tiddlers and Toddlers group that is now a thriving part of Tuesday mornings at the Chapel. She was also a regular visitor to the 'senior' members of Speen Church, and a steadfast support to many in our community in the midst of illness and bereavement. Her quiet but constant reassurance has been a great blessing.



Speen Church will miss Heather's thoroughly prepared sermons, and her patient steering of the church fellowship through day-to-day life together. But perhaps she'll be remembered most of all for presiding over a time of exciting development at the Chapel. The pristine new hall and catering facilities have led to the highly successful Chapel Hill Kitchen - our weekly café every Thursday - and a plethora of other activities across the week.

It seemed fitting to give thanks to God, say farewell and express our thanks to Heather for her hard work in the church and community over generous portions of sandwiches and cake. And because Heather lives nearby (and was a French teacher) she was quite clear that her leaving party is not good-bye but "au revoir".

Heartfelt thanks for all you have contributed Heather. See you soon at Chapel Hill Kitchen!



Other news ...

There is plenty of activity at the Chapel and across the community:

Our regular calendar of events include:

Tuesdays: 9.30am - 11.30am Toddlers & Tiddlers / 7.00pm Alpha

Wednesdays: 10.00am Time Out

Fridays: 10.30am - 12.30pm Square Pegs: knitting, crochet & chatter

Saturdays: 8.00am - 9.00am Open Door: Chapel open for quiet reflection and prayer

Sundays: 10.30am Sunday Service with creche & young people's group

At Christmas you will no doubt already have the carol service on 24th December at 6pm on your calendar. Arrive early to get a seat! There will also be a communion service at 10pm on 24th. Our (lively 45 minute) Christmas Day service will be at 10.30am.

The café at Chapel Hill Kitchen continues to open from 9am to 3pm on Thursdays, raising funds for the mother and child project in Ethiopia and Agape School in India. We'll be closed for a couple of weeks over the Christmas break though so check the website if in doubt, and to catch up on other activities – www.speenchurch.org.

OBITUARY

Rachel Radburn - Founder of S&NDN

Rachel Radburn, who lived in Speen in the 1990s, founded The Speen and North Dean News together with Gloria Holmes. Gloria remembers the day when Rachel expressed the desire to start a community magazine and together they hatched a plan; now nearly 30 years later the simple black and white newsletter has evolved into a beautiful glossy and colourful publication!

Sadly Rachel passed away last year, but at her request her ashes are now interred in the churchyard at Speen Church where her husband, Charlie, was the Pastor for several years. Several folk from the village joined Rachel's family at her interment service in October remembering Rachel and sharing fond recollections of the early years of S&ND News.



TUDOR TRAVEL

Taking you there in style



**Providing luxury transport
for the local area**

Five and eight seat MPVs

22-34 seater midi-coaches

Group trips, corporate events, days out

Local and long distance

Fully insured and licenced

Private & business accounts welcome



01494 488887 / 07771 881245

info@tudortravel.co.uk

www.tudortravel.co.uk

SPEEN VILLAGE HALL

Bill Groves, Chairman Speen Village Hall Management Committee



at the touch of a screen. We have also updated the wiring and electrical circuits.

At long last we have an efficient and cost effective new heating system in the Village Hall. Thanks to grants from Wycombe District Council, Speen Shop Charities Fund and a very generous contribution from Speen Village Fete we have a simple heating system which provides the required temperature

After the summer break, normal service has been resumed with the return of the Bridge Club and the Table Tennis Club, along with our regular users the Pre-School, the W.I. and the monthly Pop up Pub.

The next highlight event is our annual Christmas Fayre which this year is on Saturday 1st December, with doors opening at 2.00pm in the Village Hall. We will have our usual array of stalls including Cakes, Christmas Decorations, Gift Stall, Book Stall, Tombola, Raffle, Mulled Wine and Mince Pies. Please do join us - you will receive a very warm welcome and the opportunity to meet Father Christmas! This is our major fundraising event for the Village Hall and your contributions are vital to keep the Hall running.

WILDLIFE WATCH

Peter Symonds

Autumn 2018

The late summer period has seen an increase in reports of insects normally associated with warmer climates. In early September a hummingbird hawk moth was seen on several occasions hovering around our Buddleias. However the most widely reported insect has been the hornet. Both Jane Oury and Jeni Fahey have reported needing to remove hornet nests from their cottages at opposite ends of the village. Jane subsequently had an individual which was 30mm long which may well have been a queen. With the spread of the Asian Hornet in parts of the country, which are a threat to our bee hives, this increase in numbers is a potential concern.



At this time of year other local wildlife can become an increasing problem. Our villages lie close to woodland and our warm lofts and garages can be attractive to Glis glis (edible dormice) looking to hibernate. They are present in very large numbers locally and are excellent climbers and can squeeze through extremely small gaps and many villagers will have heard them at night scrambling behind plasterboard or in the roof space. The photograph below shows 4 or 5 Glis glis that were hibernating in a set of garage drawers in Speen. Unfortunately they can damage wiring and even timbers. Damage to wiring by Glis is apparently regarded as the most plausible cause of the substantial fire in Abbotswood a few weeks ago. They can be attracted to traps by apples or Bramley Apple sauce and may be discouraged by the use of

a disinfectant spray (e.g. Dettol). Please remember it is an offence to release this alien species back into the wild. I do not think the authorities are conscious of the scale of problems these animals can cause.

Interesting sightings over recent weeks include a probable Peregrine over Spring Coppice lane reported by Les Brown in mid-October. He described

a bird of prey flying at speed with an unusual wing shape. As it passed overhead its wings retracted and it accelerated into a stoop diving towards College plantation. This is typical behaviour associated with these birds. They now nest regularly on the side of County Hall in Aylesbury and also at Milton Keynes Football stadium so they are certainly present in the county.

Other village records include a male Sparrowhawk taking young blackbirds, possibly direct from the nest, in August. A Garden Warbler was recorded at around the same time. More recently a Grey Wagtail has been present in Abbotswood. The last of the 29 young Mallard ducklings hatched and raised in our back garden flew away in early October seemingly having survived despite the presence of a male fox in the vicinity reported by Mick Faulkner.

Please let me know of interesting records-488016 or psymonds590@gmail.com

VILLAGE ENVIRONMENTAL SERVICES

DOMESTIC DRAIN SERVICES

Poppleton, Humble Cracks
Est. 1979

BLOCKED DRAINS?

FAMILY RUN BUSINESS SINCE 1979
BLOCKED DRAINS CLEARED

REASONABLE RATES

CCTV DRAIN SURVEYS

NO EXTRA CHARGE FOR EVENING, WEEKEND OR BANK HOLIDAY CALLOUTS

FULL PUBLIC LIABILITY INSURANCE

CALL US DAY OR NIGHT

**24/7
CALLOUT
SERVICE**

07850 635 844 01296 624 221 (MESSAGES)



mwh

design • refurbishment • construction



- Interior building work and alterations
- Bathroom design and installation
- Kitchen design and installation
- Full property renovations
- All work covered by comprehensive insurance and full guarantee

t: 01869 278885
m: 07866 738829

mwh | interiors

www.mwhinteriors.co.uk • info@mwhinteriors.co.uk



Renovated Bus Shelter & Noticeboard

The bus shelter in Hampden Road and the Lacey Green Parish Council noticeboard on the corner of Water Lane have been recently renovated by contractor Dennis Cook. Dennis was recommended by a number of local residents for whom he carries out gardening and other jobs. We are also very grateful to Paul Rogerson who has very kindly renovated the Water Lane signage on the notice board. If anyone wants to publicise an event in Speen (A4 maximum) please can they contact Philip or Roger who, providing there is room, will put it on the community side of the notice board.



Silent Statue

To mark the final year of the World War One centenary, Lacey Green Parish Council decided to support The Royal British Legion's movement to say 'Thank You' to the First World War generation who served, sacrificed, rebuilt, changed and shaped the nation as we know it today. In support of the Thank You movement Lacey Green Parish Council have bought three 'Silent Silhouettes'. One 'Tommy' has been erected opposite the shop in Speen, whilst another has been erected at Greenlands and a silhouette of a nurse erected at Roundlands in Lacey Green. The silhouettes have at their base the words 'Lest we Forget' and will be displayed throughout the period from now to late 2018 when the nation will be commemorating the 100th anniversary of the Armistice, the end of WW1.

KING WILLIAM IV UPDATE

Peter Symonds

Villagers will be aware that a team has now been working for over three years trying to secure the future of the King William IV for the village community.

Many hours of work has been put in visiting and doing research into other village pubs which have been saved by their local communities. The team includes specialists in commercial property, finance, planning, law and business but we have also liaised with planning and tax specialists and representatives from the licenced trade. We have established a detailed business plan that will ensure the viability of the pub on a realistic turnover projection that takes into account all the current market trends. We have also formulated plans to ensure village representation in the operation of the pub.

Meetings have taken place with the agent and the vendor and three substantial offers for the freehold interest in the property with vacant possession have been submitted. We have secured pledges of substantial funding from many villagers to support the offers albeit additional funding would be required to conclude a viable purchase particularly having regard to the further costs involved. In making our proposals we have had regard to the legal costs involved (which will exceed £30,000) and also the substantial costs of repairing and refurbishing the pub to make it an attractive venue again. Our intention was to engage more widely around



the village once a price was agreed to secure the additional funding and support required.

The pub was originally placed on the market at £900,000, albeit that has more recently been reduced to £825,000. However the team is unable

to recommend a purchase at this level. We regard the final offer we have made to be a very generous proposal but it has nevertheless been rejected.

Pubs continue to trade satisfactorily in many smaller local villages and the team are firmly of the opinion that a vibrant community like Speen can support the business model to ensure that we retain an important social venue.

The key motivation for funding such an enterprise is the wish to retain this important social hub for our community but a successful pub can also enhance house prices in the village. However, the price to be paid must be realistic, having regard to all uses permitted under the current planning use and the condition of the building, which is a Grade II Listed building.

The team intend to resist any planning proposals that fail to ensure the continued presence of a pub in Speen. Please show your support for the continuance of a pub within our village by registering at our website:

www.savethekingwilliam.org



Reliable, friendly service

Based in Upper North Dean

PLUMBING & ELECTRICAL SERVICES

**Taps • leaks • drains • loos
central heating & controls
bathrooms • kitchens
water softeners • water tanks,
Emergency spares and repairs**

Local to Naphill, Walters Ash, Lacey Green, Speen,
Hampden, Hughenden & North Dean

Paul Newman Ltd

01494 565573

Registered for electrics
and self certification



SPEENHELPING HOSPICES

Grainne Suter



The Hospice funds got a great boost this Autumn and SHH is so grateful to all those who made this happen. Particular mention goes to Johnny Thirkell, as all the proceeds from this very successful night were donated to the Hospice Fund. 'Blown It' made £1,000, so many thanks to Johnny and his colleague Ian Donaghy for their kindness and generosity.

We were very uncertain about running the car boot sale but, like all charities, we have to experiment and seek new ways of fundraising. I am very pleased to tell you that the weather held, the plans worked to perfection, the sellers turned up and lots and lots of buyers. We made over £900 profit - it's amazing what you can do with the contents of your attic!



The Bridge and Afternoon Tea event was held in Judy Keen's barn. This is a beautiful setting and it looked even better on a glorious Autumn afternoon. "This afternoon tea is as good as they serve at The Ritz" was a comment from a happy bridge player. Perfect finger sandwiches, scones and cream, meringues and eclairs were served to all and we were delighted with the very positive feedback and the £700 that we added to the Hospices Fund.



The Christmas Market was an amazing success. We were so pleased to be back in the village for this event and the Chapel Hall was the perfect setting. Thank you so much to everyone who came along and helped to raise a very healthy profit of £2,800. Many thanks to Dennis Cook Gardening Services and estate agents Michael Graham for sponsoring our advertising, and to Jacqui Laing for the design and preparation of all the artwork. Hildreth's very kindly donated wonderful gifts for the garden hamper. Mother Christmas's Grotto was magical, and we are very grateful to Amanda Dobbs for her creativity and hard work assembling it. Mother Christmas - Cerri Syner, and elves Gracie Stickings and Susan Gregory - charmed the little ones as they took messages for Father Christmas. Judy Keen's sausage rolls are now the talk of the village! Thank you to the stall holders for their support and participation again this year.



7th December is the lighting of the Christmas tree on the playing fields and SHH has been asked by the Playing Fields Committee to provide the refreshments in the Village Hall afterwards. Come along, sing some carols then join us for mulled wine and mince pies. All donations to Speen Helping Hospices.



Printers of Speen & North Dean News

**DESIGN, ARTWORK
DIGITAL & LITHO PRINT**
all under one roof

8 Wycombe Industrial Mall
West End Street
High Wycombe
Buckinghamshire HP11 2QY

T: 01494 452266

F: 01494 452216

E: mail@pkinprint.co.uk

W: www.pkinprint.co.uk

Newsletters

Leaflets

Programmes

Brochures

Folders

Labels

Stationery

Carbonless

Instructions

CONTACT US NEXT TIME YOU NEED A PRINT QUOTATION
if it's on paper we print it

Oven Loving

BEST
NEW BUSINESS
2017
Awards 2017

"Your oven
cleaning
specialists"

"Booking online was
so easy"

Exceeded my
expectations, my
oven looks amazing.

Tina Kemp

"I always look
forward to getting
my oven cleaned"

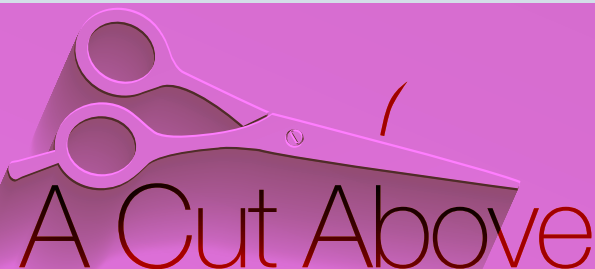
Tidy, respectful
team, professional
service. *Lee Neal*

Call
today

Book
online!

01296 320340 | ovenloving.co.uk

sayhello@ovenloving.co.uk | facebook.com/ovenloving



Have you discovered
your local salon yet?

A Cut Above is situated in the heart of Speen village
with easy parking. A unisex salon with a warm family
friendly atmosphere.

Chris Stiles and Cathy Wardle are experienced
professionals providing cuts, colour, styling and hair
care advice at an affordable prices.

For appointments: **Salon 01494 488 899**

Chris 07789 115 942 | Cathy 07753 858 611

A Cut Above, Over Speen Stores, Chapel Hill, Speen, HP27 0SL

We hope to see you soon!

Buckmoorend
farm shop & kitchen



**HOME REARED MEATS
LOCAL PRODUCE**

NEW KITCHEN TRAILER

Chequers Estate, Missenden Road
Butlers Cross HP17 0UT 01296 622 472
www.buckmoorendfarmshop.co.uk

SHOP OPENING HOURS
Wed to Fri 10 am – 6 pm Sat & Sun 10 am – 4 pm

KITCHEN OPENING HOURS
Sat & Sun 10 am – 4 pm

**TRY US FIRST
FOR CHRISTMAS**

NORTH DEAN GIN NIGHT

Alison Holmes

It is a known fact that our sociable, local residents like a tot or two! We have had some great Wine tasting nights and extremely popular pub nights; we even drunk the bar dry at Rock the Hill !!

A Gin Tasting night seemed the next logical social event in the Village Hall in North Dean. Understanding what you indulge in and knowing the difference between your Vodka and your Gin was quite enlightening.



So, our little evening was blessed with over 50 attendees who got to taste 7 different Gins and benefit from a pink gin cocktail on arrival. We provided food 'to soak up the alcohol' and a fun, if slightly rowdy, evening was had by all.

The Conker distillery in Dorset kindly donated a bottle for us to sample and it turned out to be one of the favourite Gins although the VERY favourite of the night was the Toad PHYSIC Gin – a gin made from 25 Botanicals all collected from The Oxford Botanical Gardens.

TOAD (The Oxford Artisan Distillery) in Oxford had invited me and Melinda up to their distillery for a quick tour and taster session prior to the event so that we could pass on what we learnt. It's an amazing artisan business in some old renovated buildings in Oxford. Their enthusiasm and knowledge make for a wonderful range of Gins.



Italian Wine Tasting next!

See you on
7th December.
Tickets online
through the website
or call Jeremy Mudie
on 07880 785983.

SPEEN HERITAGE GROUP QUIZ NIGHT

Catherine Butler

A few old and new villagers attended this quiz making four teams, named 'Neeps', 'Crumble & Custard', 'Ad-hoc but Willing' and 'Poor George'. Peter Symonds found us some quite challenging questions on such things as people, places, pictures and wildlife, amongst other interesting subjects. 'Poor George' were the winning team, consisting of Pat Roberts (who named the team after George Butler who had a fall and cut his head!) her son and daughter-in-law Jill, Corrine Symonds, Jill White and George and Catherine Butler. Everyone was kept well lubricated by the bar and a most enjoyable evening was had by all.

NEW KITCHEN AT BUCKMOOREND FARM



Buckmoorend Farm Shop on the Missenden Road on the Chequers Estate at Butlers Cross is now Buckmoorend Farm Shop and Kitchen, with the addition of a brand-new kitchen, with state-of-the-art cooking facilities, serving hot food using super, tasty, fresh home reared meats straight from the farm.

For Christmas you can order Free Range Bronze Christmas Turkeys with collection from the shop up until lunchtime on Christmas Eve. The home reared meats make excellent festive roasts to accompany the turkey and the tastiest traditional trimmings. There's fine seasonal local produce and new beers too from local brewer Malt the Brewery.

Shop open Wed-Fri 10am-6pm: weekends 10am-4pm (kitchen weekends only). Extra opening hours over Christmas.

Tel: 01296 622 472. www.buckmoorendfarmshop.co.uk

If your loved one does not want to go into a care home, there are other options.

Ashridge Home Care highlight the benefits of live-in-care.

Trudi Scrivener, owner of Ashridge Home Care is passionate about enabling people to stay in their own homes for as long as they wish. She asks families to consider alternate options for their loved ones by exploring the potential of live-in care as an alternative to moving into a residential care home.

According to a report published by Age UK, nearly 1.2 million older people don't receive the help they need with essential activities in later life, such as self-care, daily housework and leisure activities.

Live-in care is perfectly suited to individuals who want to remain in their own home, but who require the extra assistance or companionship of a professional carer.

Trudi Scrivener explains: "Unlike other care options, a live-in carer will stay with your relative and provide care and support to them whenever they need it. With live-in care, your loved one will experience one to one care in the comfort of their own home, from a fully qualified carer who is able to assist with everything from daily needs to companionship, personal care, cooking and other domestic housekeeping chores that need to be completed."

Ashridge Home Care



Ashridge Home Care believes that staying within the familiarity of our own homes is integral to our wellbeing. It's not just the comfort and convenience that are benefits, live-in care can also help to ensure your loved one's safety and personal wellbeing are being prioritised. Having a carer on hand can help reduce falls and it also means the client will have a companion so the person won't feel isolated and lonely.

Trudi continues, "By keeping your loved one at home with a carer you're allowing them to keep a sense of individuality, as well as retaining their current lifestyle and access to absolutely all of their belongs and treasured memories."

Live-in carers take a person-centred approach which can help your loved one retain their sense of dignity and independence, and even push them in the right direction to keep them happy and healthy. Individuals can build personal relationships with their live-in carer, helping to fight loneliness and ensuring that they get the best care available to them.

What is surprising to many people is that the price of live in care is compares favourably to that of a care home, it's especially cost effective for couples where the cost of residential care would be double.

To find out about the services that Ashridge Home Care offers or for an informal chat for care advice and options available, you can contact Trudi on:

01494 917344 | info@ashridgehomecare.co.uk

www.ashridgehomecare.co.uk

NORTH DEAN VILLAGE FETE

Alison Holmes

What a FUN day! We were lucky enough to have a great display by the amazing Hearing Dogs for Deaf People. They really are wonderful, clever little dogs who can change a person's life for the better.

The perfectly behaved Hearing Dogs were followed in the main ring by many very-much-loved pets! And to be honest not quite so well behaved!!! The Dog show brought out many of our local muts, all strutting their stuff and batting their eye lids to try and win a rosette. There were some beautiful dogs and the judges struggled to pick the winners.



The ferret racing was such fun! People were able to handle the ferrets and place bets on the races. Not a huge money winner but good pure fun and frolics.

The produce tent was as always so well supported and revealed a lot of secret Alan Titchmarshes in the area! There were some wonderful vegetables which made a tough choice for the judges to come up with winners. The Arts and Crafts also saw many entries and recognised winners. Well done to all.



We were blessed to have two wonderful bands playing music for us all day long. The opening of the fete saw the Ellesborough Band bringing the fete to life. The second half of the day saw our very own and special, Piggots Band creating the required village fete ambience. The Piggots community also provided us with a wonderful second hand book stall, that proved very popular and lucrative!

The Running races!!!! Not only for kids, but adults too. How people laughed! Probably because adults were falling over and being so competitive, their kids hadn't seen this side of Mummy or Daddy before!



Judy's Tea Room was kindly run and donated by Judy Keen and her team AGAIN! Providing gorgeous cakes and service with a smile and just up the field the South African BBQ (very tasty) was manned and supplied by the enthusiastic and very generous Cournswood team of chefs and servers.

The Bar, the various stalls, the help by so many people in the village, the weather and the village committee's commitment all contributed to a great Village Fete and one of the most profitable for some years.

Thanks to all for your support and help, however big or small.





Beauty by Georgi

Local Beauty Therapist

Based in North Dean



CIBTAC and CIDESCO Qualified

Champneys Trained

*Working from a fully equipped home salon
using industry-leading brands such as
Jessica Geleration, SNS, Sienna X, LVL Lashes & others*

For appointments please contact me on:

07775 504981

 @beautybygeorgi 



ROWLANDSCAPES

CREATIVE LANDSCAPE GARDENING

- Patios & paths • Brickwork • Planting & hedging
- Fencing • Driveways • Wildflower meadows
- Lawns • Garden maintenance • Tree surgery
- Woodland management • Agricultural fencing

Telephone: 01844 351919 **Mobile:** 07718 257104

Email: rowlandscapes@googlemail.com **Website:** www.rowlandscapes.com

SPEENPLAYING FIELDS

Matt Davies

Winter Update

Since the last update work, has completed on the new play equipment. The supplementary safety matting was installed and, lastly and best of all, the monkey bars have been reinstated*, complete with shiny new nuts and bolts.



As ever, it is a busy time for our Speen Playing Fields with bonfire, fireworks and Christmas Trees moving towards centre stage.

Like most high performing successful teams we trustees of the Speen Playing Fields like to continually innovate and to challenge ourselves.

*The more observant simians among you may have noticed there's still a cross bar missing, but moves are afoot to source and fit a replacement piece.

To mark the completion of the installation an opening ceremony was held immediately following the Autumn Work Party. Reasonably well-attended, despite the damp weather, the blend of work party stalwarts and representatives of the various supporting groups gathered to celebrate the snipping of the ceremonial safety tape and to enjoy a modest glass of bubbles. Gloria Holmes was unable, this time, to demonstrate her prowess on the new Qube climber (inappropriate footwear), but luckily a handful of properly-shod local children were on hand to assist.

Innovatively, the notion of holding the Spring work party in the afternoon and for it to be followed by a family Barbeque has been mooted to broaden the appeal.

To challenge ourselves we're actively seeking additional top talent to enhance the dynamism of the trustee group. If you feel you have what it takes to meet about once a quarter to handle burning environmental issues, power struggles, strategic infrastructure programmes or forensic audits (read: fireworks, extension cables, new swings or safety inspections) then please do get in touch. (matthewwhitney1972@gmail.com / clare.morris@mac.com)

On behalf of the SPF Committee, thank you for your continuing support, keep your grass neat and your bushes neatly trimmed!



Photographs by Martin Hart

Speen Pilates

STRETCH • STENGTHEN • CONTROL



Pilates is a progressive exercise method, ideal for all ages and abilities. It improves your posture, strength and flexibility, leading to a more efficient and toned body.

Pilates has gained wide recognition from the medical and sporting professions. It is widely used from those recovering from illness and injury to professional athletes aiming to improve performance.

★ ★ ★

Offering small classes for a maximum of 6 clients

Monday - 9.30am and 6.30pm

Tuesday - 9.30am and 6.30pm

Thursday - 9.30am

Friday - 9.30am

★ Now booking for January 2019 ★

★ ★ ★

The Studio at Midmede, Chapel Hill, Speen

Amanda 07733 307475

amandapilates@btinternet.com

www.speenpilates.co.uk



HRH The Princess Royal unveils new war memorial

On 19th September 2018, HRH, The Princess Royal, unveiled a beautiful bronze statue, "Soldier and Horse" by renowned artist George Bingham that will now serve as the war memorial for the world's oldest equine charity, The Horse Trust. The event having been timed in the lead up to the centenary of Armistice.



Her Royal Highness is Patron of the charity that began in London back in 1886 after their founder was inspired by the novel 'Black Beauty' to help the hard working horses of the capital and their impoverished owners. Ann Lindo created The Home of Rest for Horses (now The Horse Trust) to provide urgently needed respite for the horses, ponies and donkeys of London's working poor, and whilst their horses rested and received veterinary and farriery care, the charity would loan them a healthy horse so they could continue to provide for their families.

The Horse Trust's most significant contribution in The Great War was its provision of the first ever motorised horse ambulance to the western front, which revolutionised the care of sick and injured horses. The ambulance operated out of No.2 Veterinary Hospital, Le Havre and was such a huge success in getting thousands of animals back from the front to the 18 veterinary field hospitals, that the War Office requested 13 more such vehicles from various charities.

After the war, The Horse Trust took in a number of retiring military horses to their Home of Rest, back then based at a farm in Cricklewood, London and has been retiring equine public servants ever since.

The artist, George Bingham, who created the beautiful memorial now in the centre of The Horse Trust's main yard in Buckinghamshire, felt The Horse Trust's story of WW1 was one of survival. That he would look to create a composition that wasn't about horror, or focused on Officers on their Chargers, rather one that represented an ordinary moment in extraordinary times, yet one that still



Ben Dent playing The Last Post

held relevance to the charity's work today.


HRH commented in her address that something that remains as true today as it was then is how close the bond is between soldier and horse and in The Horse Trust's modern context, also between police officer and horse or disabled rider or driver and pony. Horses are no longer required to serve on the battlefield yet our Military Working Horses still proudly represent our country around the world on state ceremonial duties, along with the horses of The Royal Mews.

To this day The Horse Trust provides for the retirement of any military working horse that needs a home at the end of their service. They also care for retired police horses, and ponies that are utilised by charities to help disabled or disadvantaged children and adults as well as taking care of local welfare cases.

Three equine civil servants were ceremonially retired at the event, El-Alemain of the Defence Animal Training Regiment, Cloud of the Royal Mews and Boris, an amazingly brave police horse who has served the people of London, and latterly Gloucestershire, for an incredible 20 years. Boris was one of 10 horses that received the PDSA's Order of Merit medal (the animal OBE) for outstanding bravery during the Tottenham Riots of 2011. Boris

led the Met mounted section present from the front that terrifying day and never once flinched, even when having missiles thrown at him or moving passed burning buildings towards dangerous crowds of rioters to protect foot officers in danger. When his saddle was removed for the very last time, it was a truly emotional moment for all.

Jeanette Allen, CEO of The Horse Trust, said, "We are truly honoured to have our Patron with us on such an important day, a day of both commemoration and celebration for the oldest horse charity in the world. We are thrilled with the statue and with all the re-enactments of scenes from the time around the site, it was an extremely special event for all of us and for our guests, sponsors and donors".



20% of our sales
happen behind
closed doors*

Over 100,000 buyers and tenants search for their new home through Hamptons International every year – many are offered properties that will never be advertised on the open market or online.

So whether you are a property owner wishing to take a low key approach to marketing or a buyer or tenant wanting to ensure you don't miss out on the perfect property it's vital that you speak to Hamptons International. We can tell you about all the properties we have on the market – not just those you can see online.

Hamptons Great Missenden

Sales 01494 863 134 | Lettings 01494 355 029 | greatmissenden@hamptons-int.com
hamptons.co.uk



- Over 20 years experience

- All interiors and exteriors

- All wall coverings

- Free quotations

SB Professional
Painting & Decorating
Call Ben On:
07973 539495 or 01296 486470

References from completed work are available from Speen and surrounding areas

SPEEN GARDEN GROUP

Marion Grimsdale

Once again we have had a very successful year with lovely weather throughout.

We started off in April with a talk by Janice Cross who told us about the National Garden Scheme and all the different charities who benefit from our visits to the lovely gardens detailed in 'The Yellow Book'.

In May we enjoyed a tour of the beautiful Evenley Wood Gardens, followed by the very essential tea and cake in 'Uncle Geordies Shed'; and in June we enjoyed a car sharing trip to a local garden in Chesham Bois.

But the highlight of our year was a visit to Prince Charles garden at Highgrove. We were limited by numbers and soon filled our coach leaving Speen at 9am and arriving

at Highgrove in time for coffee. We watched a short video explaining the Prince's ideas for the garden, then had a tour led by one of their expert guides. It was so interesting - especially all the little details she told us about the different follies and statues. The Prince is completely dedicated to conservation in every way and we were amazed to learn that any masonry coming from old churches is classed as 'consecrated stone'. This cannot just be disposed of, so Prince Charles has it all sent to Highgrove where it is used in many ways in his garden, such as constructing walls etc. After the tour we then looked around the shop and had afternoon tea in the restaurant or sitting in the sun in the garden, before leaving for our journey home.

We are now in the process of making plans for our 2019 programme and hope to start with a talk in the Spring.



SPEEN vs NORTH DEAN GOLF

Dick Pooley

On a beautiful day for golf, 25 intrepid golfers (8 from North Dean and 17 from Speen) assembled at Winter Hill Golf Club at around 8.30am, ready to begin the Autumn leg of the bi-annual golf competition.

Firstly bacon rolls and beverages were consumed then, after a slight delay to allow the frost to clear from the greens, the first four ball teed off. Each four or three ball, had at least one North Dean player in it, in order to keep the field as even as possible.

The competition was played both in great spirit and with some very good high scoring shots, and after the last four ball finished, we all were fed with ham, egg and chips and some well deserved beers. The scores were assimilated and totalled and the results are as follows; taking into account individual stableford handicaps.



Longest drive on the 6th:

Steve Ashton (Speen)

Nearest the Pin on the 15th:

John Mulry (Speen)

Overall winner with 42 points:

Duncan Dow (Speen)

Overall second place with 38 points: Tom Pooley (ND)

Averaged stableford handicap Village Scores

North Dean = 29.50 points

Speen = 29.58 points

So well done to all the Speen players and tough luck to all the North Deaners; it was a very, very close finish. I think we are ALL looking forward to the Spring competition, which will be the turn of Speen to organise. North Deaners - we need to find more players to get our averages increased!

Heppelthwaite

The Red Van Plumbers



Plumbing and Heating

Boiler Installations and Services

Oil | Biomass | Gas

01628 533 550

www.RedVanPlumbers.co.uk



Thanks to this year's lovely weather, we held two very successful outdoor events in August. On our meeting night we enjoyed a walking treasure hunt around the village followed by Prosecco and canapés back in the Village Hall. Our Annual Summer Garden Party welcomed guests as well as members to enjoy a lovely homemade afternoon tea. It also gave us a chance to hone our jig-saw skills as we are entering a team in the Buckinghamshire WI jig-saw challenge this year.

Our Group meeting, held in Holmer Green, gave us a chance to socialise with members from other local WIs in the area. The speaker outlined how WIs established in women's prisons were helping with rehabilitation, giving them a focus and a new outlook on life prior to their return to their homes. Several members also enjoyed a Fashion Show at the Gateway in Aylesbury, organised by the County Federation. Lots of ideas and the chance for retail therapy – what could be better?

In November we hold our Annual Meeting which is far from a stuffy business affair. It gives us a chance to look back over our very busy and successful year as well as

appointing, or in this year's case reappointing our Officers for the Year. After that we can indulge in our Bring and Share Supper and a little light hearted hands-on craft work. We hope the results of this will have been seen by many in the village.

For our last meeting of the year in December, we shall welcome Stuart Linford, who was a well renowned local chair-maker, to provide the remarkable story of the Windsor Chair.

Our programme for 2019 is now in place and we look forward to informative speakers, interesting outings and varied activities. As usual these can be found on the Speen and North Dean News What's On page and on our monthly posters.

We have been delighted to welcome new members this year and can assure anyone interested in what we do of a very warm welcome when you come to visit us.

speenwi@gmail.com

LOCAL BUSINESS OWNER CELEBRATES GROUP'S 70th ANNIVERSARY

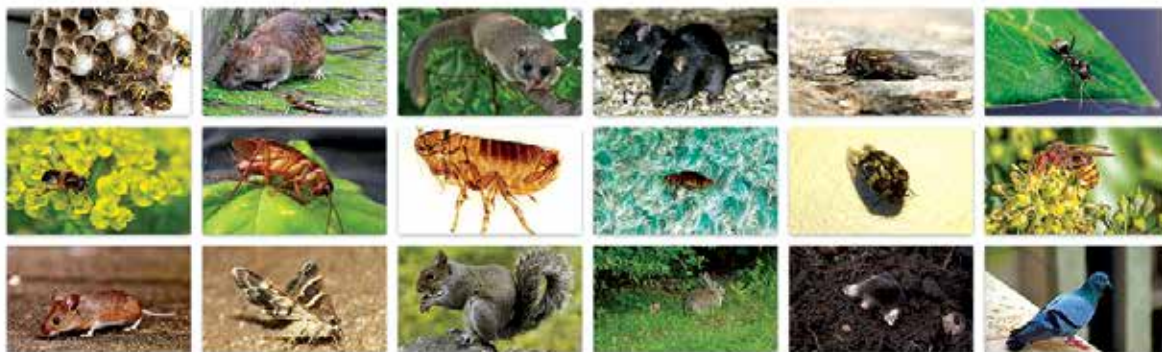
2018 marks the 70th year anniversary for the Evans Group, a family run plumbing and heating company spanning three generations of the same family since 1948. The group's chairman, Martyn Evans, is a local resident here in Speen.

Over the decades, throughout the property booms and also the crashes, the Evans Group has successfully adapted to the industry. It has seized every opportunity to evolve and today is a multiple award winning company. R.G.Evans Plumbing and Heating, and Heppelthwaite the Red Van Plumbers are two of the most successful businesses within the group.



Local Resident Martyn Evans (right) with Father Ray (middle) and Brother Andrew (left)

Martin Holman's Pest Control & Services



Giving you peace of mind
with an efficient and friendly pest control service

It doesn't matter what your pest problem is or whether you are a homeowner or business, I'm here to help you be pest-free as quickly as possible.

Over the last 19 years, I've dealt with everything from bed bugs to bees, cluster flies to cockroaches, moths to mice, and am licenced to remove Glis Glis.

Qualified with over 19 years' experience

Full public liability insurance

Treatment and prevention for rodents and insects

Domestic and commercial

Quick and reliable service

review

"We have used Martin's pest control services on several occasions whether it be to deal with wasps, bees, mice or Glis Glis.

Martin is very professional and reliable, responding promptly to any enquiries. He is extremely knowledgeable and clearly goes through the various options available and then deals with the problem in an efficient manner".

*Mrs M
Princes Risborough*



review

Your quick response and swiftly effective eradication of our horrible pest problems was marvellous, thank you.

We highly recommend your valuable and cost-effective service to anyone with a pest control problem.

Where have you been all this time!

*Mr & Mrs D
Princes Risborough*

(M) 07510 290321

(T) 01296 622972

ratman01@talktalk.net

www.martinholmanspestcontrol.co.uk

Nick Higgins
Forestry & Fencing
Contractor

m. 07768 383418
t. 01494 488835

45 Great Hampden Seasoned logs
Bucks available
HP16 9RJ



JOHN BISHOP *Est. 1972*
GARDEN MACHINERY

Sales & Service



HONDA
LAWN & GARDEN



Machine Hire

Scarifiers, Cultivators, Strimmers, Mowers
Hedge Trimmers

Blade/Chainsaw Sharpening & shear grinding.

We also stock a wide range of parts for various products.

Free Collection & Delivery



Tel No. 01494 563513

Mob. 07917 106004

1 Margaret Cottages, Northdean, High Wycombe, Bucks, HP14 4NH



SPRINGLINE
CARS PRIVATE HIRE

- Airport Transfers
- Events & Occasions
- London Trips
- Personal Service
- Owner Driver
- Local Knowledge

RISBOROUGH

01844 27 44 74

Know the voice, know your driver



K. J. WINDOWS
& DOORS

UPVC Windows and Doors

Conservatories

Fascia and Soffits

Bi-Folding Doors

Misted and Broken Units

Repairs

All work guaranteed

Call Keith on 07539 367200

kjwindows@icloud.com



UNIVERSAL CARE

always there



Whether it be 1 hour per week or full time,
it is a privilege to be trusted to care for you
or your loved ones

5 Reasons to use us -

- High standard of care
- Established over 3 decades
- All profits go to charity
- Directors have hands on involvement in the business
- Competitive charges

Please call on 01494 678811
or email care@universal-care.co.uk
www.universal-care.co.uk

CG Tree & Garden Services

Tree surgery & felling
Fencing
Hedge cutting, topping & turfing
Woodchips & firewood for sale



Free estimates • qualified staff • fully insured

Tel: 01494 562045
Mob: 07798 896380



ROWENA's

(MCThA) (AoR)
NHS Register of Approved Reflexologists
Karuna & Reiki Master

Aromatherapy
Caci non-surgical face lifting treatments
Reflexology
Aqua detox
Indian head massage
Acupressure massage
Energy healing

Treatments carried out in
home based salon in Bryants Bottom

**Call Rowena for more information
or a free consultation**

Tel: 01494 488430
Mob: 07855 848261
rowena.j.templeman@gmail.com

Coles & Blackwell

Car Service & Repairs

Book online at:
www.colesandblackwell.co.uk

**Quality car servicing and repairs
much closer than you think!**

Where are we ? You will find us 300 metres down the small lane opposite the top
of Bradenham Wood Lane in Walters Ash, High Wycombe HP14 4UX

Established in 1959



Servicing

Did you know you can get your car serviced by us without invalidating your
manufacturers warranty? Legislation passed a few years ago means that you can
now choose any garage of your choice to service your vehicle.

Courtesy cars

We have a fleet of new loan cars at your disposal whilst we service your own car or
repair bodywork damage. Best of all - they are FREE OF CHARGE!
All part of the service you come to expect from Coles & Blackwell

| | |
|-------------------------------|-------|
| air conditioning | _____ |
| mot testing | _____ |
| vehicle servicing and repairs | _____ |
| crash repairs | _____ |
| tyres, clutches & brakes | _____ |
| computerised diagnostics | _____ |
| batteries & exhausts | _____ |

Open Monday to Friday 9:00am to 5:30pm
Saturday 8:30 am - 12:30pm

01494 563102

ALLIED HEALTHCARE

As a population we are getting older and many of us will be faced with finding nursing or personal care for an elderly relative or planning our own future care if we become incapacitated. Bucks, residents are increasingly making a choice, where possible, of living in their own homes for as long as possible and the local branch of Allied Healthcare is aiming to make this option easier.

The local branch of Allied Healthcare has been operating for over 27 years, based just outside of High Wycombe, has a proven track record of providing domiciliary care in the community.

Increasingly there are fewer hospital beds and long term care homes that are accessible to those needing help, support and care, and most people, if given the choice, would prefer to be treated at home with their own possessions around them. We can offer a wide variety of Care calls from 15 minute pop-in call, once a day to multiple calls or indeed a full time Live In Care.

The offices of Allied Healthcare at High Wycombe are able to help with assessing your needs and advising on all aspects of your care. Before care starts you would be visited by our assessor to ensure that a comprehensive care plan was written and tailor made to suit the needs of the client. This can be for a basic care package to a more specialized and complex packages in the case of a serious illness. We will help you to consider whether you need a fulltime carer, perhaps a special bed or other equipment, or maybe additional carers at certain times of the day to help with lifting or turning. If needed you would have the advice of the 'In House' Trainer to advise on specialist Moving and Handling issues. Allied is willing to go the extra mile to provide the highest standards of care. They try to ensure clients build a relationship with a small team of carers rather than having a constantly changing set of faces. They recommend the use of a Keysafe which ensures a carer, can always gain access to a client's house to provide the care and raise the alarm if needed.

All of the Care workers are trained to the highest standard as required by our regulators, CQC and our stringent internal audit team. Many of our workers have training and expertise in specialist areas but if we needed to we would provide training to meet a specific need of a client.

If you would like more information about Allied and the services we offer then call 01494 488040, and we can meet with you for a no obligation visit or provide you with details and costings of our services.

Work for Allied Healthcare

We always have a need for additional employees to support the services we offer. If you are interested or know of a friend who is interested in joining us as an employee we offer an attractive package. We provide care across the High Wycombe and surrounding areas.

Care & support in the comfort of your own home

Do you or a relative require care or support to live your life the way you choose? If so, Allied Healthcare can help. We have been offering an excellent dependable service in the Buckinghamshire area for over 27 years.

SELF DIRECTED SUPPORT & PRIVATE CLIENTS WELCOME

Full assessments carried out before care commences. All our staff have extensive training and have enhanced CRB checks. We also offer call monitoring.

The range of services we offer

- Visits (1/4, 1/2, 3/4, HOUR)
- Live in/24HR care
- Holiday cover
- Waking nights/sitting
- Assisted bathing
- Light household duties & shopping



For more information or assistance please call
01494 488040 / 01494 488141
Email: highwycombe@alliedhealthcare.com

All about you

If you are interested in becoming a Carer or working with Allied Healthcare then please call the numbers above for more information and an application pack. Allied Healthcare is an equal opportunities employer and is regulated by the CQC. Allied Healthcare is committed to safeguarding and promoting the welfare of children, adults and young people and expects all staff and volunteers to share this commitment.





FRASER-MORGAN SCHOOL OF DANCING

***** Naphill Village Hall *****

RAD *BALLET* for ages 3+



For more information
please contact
01494 816539 or
07974 121081

01494 816539
07974 121081



Nicki Thomas Web Design

Creating bespoke websites
for a
wide range of businesses

Visit www.nickithomas.co.uk
to find out more...

Hedgerows, Studridge Lane
Speen, Princes Risborough
HP27 0SA

Tel 01494 488665

Email nickithomas@storecomput.co.uk

M. R. COLLINS

GARDEN CONSTRUCTION

Est 1979

Driveway, Paving, Brickwork, Fencing
Groundworks, Excavations, Operated
digger hire.

We specialise in Block paving and all
types of slab laying Indian stone and
concrete offering a start to finish service
inclusive of excavations muck away,
supply and fix.

For estimate Phone: 01844 346360
Mobile: 07774 256732



Your Local Mobility Shop Independent Living Consultants



**Small aids for everyday
independence!**

**Larger items for
mobility and comfort.**



Call us, or visit our showroom :

01844 27 30 50

10 Woodway, PRINCES RISBOROUGH HP27 0NN

www.IndependentLivingConsultants.co.uk

WHO'S WHO

| | | |
|---|-----------------------|------------------|
| Bucks County Council - Member for Lacey Green | Carl Etholen | 01494 564771 |
| Hughenden Parish Council - Chairman | Roger Beavil | 01494 715296 |
| Lacey Green Parish Council - Chairman | Cathryn Davies | 01844 342800 |
| Lacey Green Parish Council - Councillor for Speen Ward | Roger Craft | 01494 488343 |
| North Dean Good Neighbours | Judith Broadley | 01494 563178 |
| North Dean Village Hall - Bookings Secretary/Fete | Jez Wicks | 01494 563517 |
| North Dean Village Hall - Chair | Alison Kent | ath@bfarms.co.uk |
| Pigotts 7 '48' Musical Evenings | Nick Wheeler-Robinson | 01494 562167 |
| Riding for the Disabled | Gloria Holmes | 01494 488420 |
| Speen Good Neighbours | Pat Richardson | 01494 488627 |
| Speen & North Dean Guides | Pauline Hall | 01494 488372 |
| Speen & North Dean News - Advertising | Tom Dent | 01494 488943 |
| Speen & North Dean News - Chair | Gloria Holmes | 01494 488420 |
| Speen & North Dean Toddler Group | Natasha Kann | 07737 638618 |
| Speen Baptist Church - Church Administrator | Sandy Mitcheson | 01494 488875 |
| Speen Fete - Chair | Lesley Thorn-Davis | 01494 488851 |
| Speen Helping Hospices - Secretary | Maureen Laing | 01494 488397 |
| Speen Heritage Group - Chairman | Peter Symonds | 01494 488016 |
| Speen Marquee | Greg Cook | 01494 488939 |
| Speen Playing Fields - Chair | Clare Morris | 01494 488553 |
| Speen Pre-School Chair | Jess Walsh | 07801 145223 |
| Speen School - Head | Jacquie Coles | 01494 488321 |
| Speen School PTA - Co-Chair | Helen Davies | 01494 488847 |
| Speen Stores | Alison Templeman | 01494 488258 |
| Speen Tennis Court - Secretary | Philippa Lane | 01494 488453 |
| Speen Village Hall - Bookings | Sue Taylor | 01494 488500 |
| Speen Village Hall - Chairman | Bill Groves | 01494 488180 |
| Speen WI - Secretary | Jenny Pearce | 01494 562333 |
| St John's Parish Church | Revd Tony Bundock | 01844 347741 |
| Wycombe District Council - Member for Lacey Green & Hampdens | Cllr. Graham Peart | 01494 488327 |

BEECHDEAN

Farmhouse Dairy Ice Cream

Made from fresh Jersey milk
and rich double cream

Ice Cream for Every Occasion!

- Made Fresh on the farm
- No artificial colourings or additives used
- Suitable for vegetarians
- Gluten free



Beechdean Dairies, Old House Farm, North Dean, High Wycombe, Bucks HP14 4NL
01494 563980 | www.beechdean.co.uk



@BeechdeanGroup



Beechdean Group

A photograph of a garden path leading through a rose archway. The path is made of light-colored gravel and is bordered by a low, neatly trimmed green hedge on the left. Above the path, a large archway is formed by a dense growth of roses in various shades of red, pink, and white. The path leads towards a white building in the background, partially obscured by greenery. The overall scene is lush and well-maintained.

Homes of Distinction

If you are looking for a very special property or have one that would benefit from our award winning marketing then we are ready to act on your behalf.

01844 343131
Princes Risborough Office

01494 711677
Hazlemere Office

FINE & COUNTRY
fineandcountry.com™