



Autumn 2016
Issue 67

THE SPEEN & NORTH DEAN *News*

www.speenbucks.org.uk



*Celebrating 50 years of
Music Camp at Pigotts*



FROM CONCEPT TO REALITY...

simply beautiful gardens

Alchemille has been designing and creating beautiful, innovative, inspirational outdoor spaces since 2004. From urban courtyards to country estates, we can create and care for the simply beautiful garden of your dreams.

DESIGN • PLANTING • AFTER-CARE



01494 488072 • 07909 936718 • info@alchemille.co.uk

www.alchemille.co.uk

Welcome! to the Autumn issue of the Speen & North Dean News, and this edition sees North Dean leading the way when it comes to events, with the celebrity-packed Fete and the wonderful 50th Anniversary celebrations at Pigotts.

Do visit the Speen Helping Hospices' Christmas Market on Saturday 12th November, but note that the venue has changed to Lacey Green Village Hall this year. It's the ideal place to make a start on your Christmas shopping and buy your charity Christmas cards. These amazing ladies work so hard to put on this lovely event and raise a lot of money for the local hospices, but they rely on your support.

There's an exciting announcement on p. 30 about the Festival play! September will be here before we know it, so if you have any ideas for an event you'd like to run for the Festival, do get in touch soon!

Jacqui Laing



Photograph by Peter Symonds

Next Edition

Copy for the next edition is **due by 10 April** with a planned publication date of early May. Please send photos separately from text, together with captions and a consent form (downloaded from the SNDN website www.speenbucks.org.uk) if any of the photos are of children. Please send to **editor@speenbucks.org.uk**.

Contents

What's On	5
Speen Helping Hospices	7
Village Hall	9
Speen Pre-School	11
Speen School PTA	13
Speen WI	15
Speen Brownies	15
Speen Church	17
Speen vs. North Dean Golf	17
Speen Fete After Party	19
North Dean Village Fete	20
50 Years of Music Camp at Pigotts	22
Pub Night in North Dean	24
Book Review - BWR An Adequate Life?	25
Beechdean Down on the Farm	27
Charity Swim	29
Speen Festival	30
Wildlife Watch	33
BBC in Speen	34
Lacey Green Parish Council	34
Notes from the Town Hall	37
Who's Who	38



Photograph by Martin Hart

Welcome Packs

The Good Neighbours scheme was set up many years ago and is now run by Pat Richardson in Speen and Judith Broadley in North Dean. One service is to provide new residents with a Welcome Pack of village information, so if you know of anyone new to the area please call: Pat Richardson (Speen) 01494 488627 or Judith Broadley (North Dean) 01494 563178 cooljude@btopenworld.com

EDITOR: Jacqui Laing • ADVERTISING: Tom Dent

COMMITTEE: Gloria Holmes (Chair), Megan Chinn, Nick Wheeler-Robinson, Julie White, Mei Price

DESIGN & PRODUCTION: Jacqui Laing • PRINTED BY: PK Inprint Ltd (01494 452266)

www.speenbucks.org.uk



Care in your own home

None of us like the idea that we might lose our independence or dignity. At Universal Care we can provide the help that you require to continue having a dignified and independent life at home.

If you are considering either live-in or daily care for yourself or a loved one you can rely on us to provide friendly advice and help that takes into account each individual's different need. Our experienced Care Managers will be happy to talk to you or visit you at home to discuss your needs and to find out how we can help.

Call 01494 678811
or email care@universal-care.co.uk
www.universal-care.co.uk



UNIVERSAL CARE

always there

WHAT'S ON

in Speen & North Dean

NOVEMBER

12 November	Speen Helping Hospices Christmas Market	Lacey Green Village Hall	Maureen Laing 488397
13 November	Service of Remembrance	Speen Chapel 10.30am	Heather McIntyre 488067
15 November	Speen Festival 2017 Village Open Meeting	Aquila Lodge Dairymede, 8pm	Kate Laughton 488548 knitknatter@treenies.com
24 November	Knit & Knatter	Speen Chapel 7.45pm	Judith Broadley 07808 576152
25 November	Wine Tasting & Nibbles	North Dean Village Hall	Alex Allan 489838
27 November	Speen School Christmas Fair	Speen School 11am	

DECEMBER

1 December	WI 'Swinging London in the 60s'	Speen Village Hall 7.45pm	Jean Morris 488529
3 December	Christmas Fayre	Speen Village Hall 2pm	Margaret Groves 488180
9 December	Speen Christmas Tree Lighting and Carols	Playing Field 6pm	Clare Morris 488553
10 December	Rob Halligan Band Concert	Speen Chapel 7.30pm	David Slade 488262
18 December	Christmas Carol Concert with Pigotts Singers	Gt Hampden Church 6pm	Sam Laughton 488548
20 December	Pub Night and Carols	North Dean Village Hall 7pm	Alison Kent 07887 963450
24 December	Christmas Carol Service	Speen Chapel 6pm	Heather McIntyre 488067
24 December	Christmas Communion	Speen Chapel 10pm	Heather McIntyre 488067
25 December	Christmas Celebration	Speen Chapel 10.30am	Heather McIntyre 488067

JANUARY

5 January	WI 'Learning to take pictures'	Speen Village Hall 7.45pm	Jean Morris 488529
15 January	Sacred Space Service	Speen Chapel 6pm	Heather McIntyre 488067
24 January	Knit & Knatter	Speen Chapel 7.45pm	knitknatter@treenies.com

List of Advertisers

A Cut Above, Alchemille, Allied Healthcare, ArcDeco, Beechdean Farmhouse Dairy Ice Cream, Buckmoorend Farm, CG Tree & Garden Services, Coles & Blackwell, Foursquare Land, Fraser Morgan School of Dancing, Hampdens, Heppelthwaites, Independent Living Consultants, JML Training & Consultancy, JNP, John Bishop, John Easterling, Judith A Newenham, KJ Windows and Doors, M R Collins, Martin Hart, MWH Interiors Limited, National Energy Foundation, Nelson Electrical, Nick Higgins, Nicki Thomas Web Design, Paul Newman Ltd, Pilates Physiotherapy, PK InPrint, SB Decorations, Speen Stores, Springline Cars, Universal Care, Village Environmental Services.

CG Tree & Garden Services

Tree surgery & felling
Fencing
Hedge cutting, topping & turfing
Woodchips & firewood for sale



Free estimates • qualified staff • fully insured

Tel: 01494 562045
Mob: 07798 896380

CURTAINS, CUSHIONS & BLINDS

DESIGNED & HANDMADE
FOR
ELEGANT & STYLISH
HOMES

*Fabrics, curtain poles and tracks
sourced and supplied to order*

JUDITH NEWENHAM

*For an attentive service
and a free quotation without obligation*

01494 868461

07788 718242

judithnewenham@hotmail.co.uk



- Over 20 years experience

- All interiors and exteriors

- All wall coverings

- Free quotations

SB Professional
Painting & Decorating
Call Ben On:

07973 539495 or 01296 486470

References from completed work are available from Speen and surrounding areas

SPEEN HELPING HOSPICES

Christine Symondson, Chairman

Christmas Market

The SHH would like to invite you to join them at their 8th Annual Christmas Market.

With the closure of The King William IV, the Market this year will be held at the new venue of the spacious Lacey Green Village Hall. We value the support we have always received from Speen residents and apologise for the Market not being in the village but hope that you will all still come and see us.

Take the opportunity to choose unique gifts from the work of exciting local artists and designers, and of course Charity Christmas Cards provided by Florence Nightingale House, Helen & Douglas House, Rennie Grove Hospice Care and The South Bucks Day Hospice. In addition there will be a Silent Auction and a Vintage Stall.

It will also be the last opportunity to buy a Raffle Ticket for the beautiful handmade Quilt that has been aired at every event run this year by The SHH, starting with the Spring Lunch and concluding with the Christmas Market. The Quilt was very generously made for the SHH to help raise funds and took 455 hours to hand piece and hand quilt.

Speen Helping Hospices was founded in 2001 with the aim of raising funds for local hospices. With limited Government funding the Hospice Charities rely heavily on groups like the SHH to raise funds necessary to care for people with life limiting conditions and give support to their families.

Please come along for what is always a wonderful day. Browse for gifts, enjoy a drink and a bite to eat whilst helping to raise vitally needed funds for our local hospices.



Bridge Afternoon in North Dean

On Thursday 6th October we held yet another very successful bridge afternoon in North Dean at the kind invitation of Judy Keen. Once again we had a glorious day and a full house of players who all happily polished off sandwiches and cakes at tea time.

Together with their generous purchase of raffle tickets, we made well over £600 profit, and are hopeful that with this and profit from our Christmas Market we will be able to give all of the hospices we support a substantial donation before Christmas.

Many thanks to all those who attended and the committee members who contributed time, sandwiches and cakes. We will hopefully be repeating this event at the same time next year.

Christine Symondson 488654
Maureen Laing 488397

A thank you from one guest

Thank you so much for the bridge drive last week. The ladies at my table all loved it - the friendly atmosphere, the setting in the Barn, the excellent tea and leaving with multiple presents and plates of cakes. We thought it was like Alice in Wonderland's tea party!



NEW VENUE

SPEEN
HELPING HOSPICES'
Annual
**Christmas
Market**
IN SUPPORT
OF LOCAL HOSPICES

Saturday 12th November
11am - 4pm
Lacey Green Village Hall
Main Road, Lacey Green HP27 0QT

**WONDERFUL GIFTS • VINTAGE STALL
CAKES • CHARITY CHRISTMAS CARDS
FOOD AVAILABLE ALL DAY**
Entrance fee £1

We support Florence Nightingale House • Helen & Douglas House
Rennie Grove Hospice Care • The South Bucks Day Hospice

ARCDECO

PAINTING & DECORATING

Friendly and reliable service
Free no obligation quotations
Expert product advice right product for
the right job
Repairs and carpentry services
All types of work undertaken
internal and external.

Call us on -

07580 418429

Email Adam at -

adam@arcdeco.co.uk

Visit us at -

www.arcdeco.co.uk

And complete the online
Enquiry form and see
all the services we
provide.



Show us your home and we will show you the buyer.

Because it's important to you.

01494 611382

www.hamptons.co.uk



Beyond your expectations

SPEENVILLAGE HALL

Bill Groves, Chairman Speen Village Hall Management Committee



The Village Hall has hosted some excellent events in the past few months including two film and food nights, Garden Club meetings and the Tea Party for the Queen's birthday.

We have recently hosted the Fete cheque handout and a sold out Jazz evening, and our ever popular Christmas Fayre will take place on Saturday 3rd December.

The Hall continues to be the centre for Village Organisations including the Bridge Club, Pre- School, The WI, Garden Club, Table Tennis Club and Ante Natal Classes.

It is also very popular for children and family parties - so if you wish to make a booking please contact Sue Taylor on 488500.

The Village Hall will have been in Village ownership for 92 years this month so please help maintain it for future generations.

LETTER

Dear Editor,

According to Wikipedia, Hambye is a commune in the Manche department in north-western France, twinned with Speen, United Kingdom (although on the Wikipedia entry it rather quaintly says twined).

So where has it gone? A mystery to this villager ...

Dear Mystified of Speen

I had also puzzled over the recent disappearance of Hambye on the village sign, so enquired of John Holmes, who remembers thus:

The Hambye Twinning

In early 1980 Peter Trotter of Lacey Green suggested to our parish council that it would be a good idea to twin with a continental parish. After some searching the village of Hambye, France, was selected.

Hambye is an attractive village about 50 miles south of Cherbourg. The twinning was formalised in late 1980. Annual exchanges of groups of villagers then took place for several years. Most enthusiasm for the twinning came from Lacey Green, few Speen villagers joined in. The twinning came to an end in 2000 due lack of support and when the mayor of Hambye stopped funding their hosting.

However, there were some residual funds which were shared between the village halls of both villages. The Speen share funded the recent purchase of the red chairs. The entry sign to Speen on Chapel Hill now reflects the current situation.





A Cut Above

Have you discovered your local salon yet?

A Cut Above is situated in the heart of Speen village with easy parking. A unisex salon with a warm family friendly atmosphere.

Chris Stiles and Cathy Wardle are experienced professionals providing cuts, colour, styling and hair care advice at affordable prices

We are now also offering a beauty service by Lucille of Lulu's Nails & Beauty. Lucille is a CIBTAC-qualified and Champneys-trained beauty therapist.

Salon 01494 488899 • Chris 07789 115 942 • Cathy 07753 858 611 • Lucille 07977 814 373

A Cut Above, Over Speen Stores, Chapel Hill, Speen HP27 0SL

We hope to see you soon!

MANUFACTURERS OF
FINE BESPOKE KITCHENS
RESTORATION & REPAINTING OF EXISTING KITCHENS



FITTED AND FREE-STANDING FURNITURE

PAINTED | KITCHENS | NAPHILL

07768 975 323

johneasterling4@gmail.com

exclusive hand-painted kitchens

SPEENPRE-SCHOOL

Helen Davies, Chair

The new term started on Monday September 5th and we were delighted to welcome our new children, having said goodbye to those who moved onto big school at the end of last term. Everyone has settled in really well and are enjoying their time learning through play.

The Pre-school remains very much at the heart of the village community and we are truly grateful for all the support we have had over the last few months. The pre-school was originally created 40 years ago as a playgroup and has developed since then into the Pre-school we have today, with wonderful links to the community.

Thank you

We would like to take this opportunity to thank Speen Fete Committee for giving us their full support this year and selecting the pre-school as their charity of choice at this year's amazing Fete. The large donation will make a significant difference to the children at pre-school, and future pupils who will be able to benefit from this wonderful village establishment.

We would also like to thank Speen Shop Fund who recently awarded us a grant for new equipment aimed at our 2 year old children. We were also able to update some arts and crafts tools that had seen better days.

The children continue to benefit from outdoor play daily, making use of our small but perfectly equipped courtyard area. They can choose to play in many activities including construction, water play, chalk drawing and the ever popular outdoor kitchen. I am not sure any of the children will make it onto The Great British Bake Off, but their mud pies are incredible! Forest school has run twice per week for the first half of the term, allowing the children to take full advantage of their village surroundings. They have spent time collecting autumn objects and have recently made wonderful collages, which are on display boards in the village hall.

Just before October half term we held our Harvest Festival at Speen Church where the children performed a wonderful re-enactment of "The Magic Porridge Pot" to an audience of parents and grandparents as well as children from Speen Infant School. We also heard a selection of autumnal songs, including the ever popular 'Cauliflowers Fluffy' (a favourite of mine).

Once again the Pre-school Committee were out in force on Bonfire Night. We served hot dogs and burgers to all the hungry spectators and kept the thirsty ones quenched with the bar. It was a very successful evening and a fantastic fundraiser. Thank you to the Playing Fields Committee and other volunteers for your help on the night.

We are looking forward to being part of the Village Hall's annual Christmas Fayre on Saturday 3rd December with our Santa's Grotto. Children will be able to write their Christmas list and post it in our special Santa Post Box as well as visit the man himself.



Looking to the New Year, we will be running our Christmas tree collection on Sunday 8th January 2017. Leaflets will be posted through your doors nearer the time, but they will also be available at Speen Stores. For a small cost we will collect your Christmas trees for recycling so you don't have to spend weeks cleaning the needles from your car!

As several children moved onto big school last term we have spaces available in many of our sessions for immediate start. Prospective parents are most welcome to pop in and visit at any time.

Speen Pre-school is open to children age from 2-5 years. To enquire about a place or receive a prospectus please contact Tracey Winfield, Pre-School leader, on 01494 488160.

www.speenpreschool.org.uk



The logo for mwh interiors, featuring the letters 'mwh' in white on a blue vertical rectangular background.

design · refurbishment · construction



- Interior building work and alterations
- Bathroom design and installation
- Kitchen design and installation
- Full property renovations
- All work covered by comprehensive insurance and full guarantee

t: 01494 488002

m: 07866 738829

mwh | interiors

www.mwhinteriors.co.uk

info@mwhinteriors.co.uk

Hayton Cottage, Flowers Bottom Lane, Speen, Princes Risborough, HP27 0PZ



A bespoke management training and coaching company established in 1997, working in the private and public sector.

Recognise and capitalise on your potential

Do you need to give yourself the space to broaden your thinking, further develop your skills, confidence and competence in today's demanding environment?

We offer a coaching service that is confidential, flexible, targeted to meet clear goals and expand your skills base. We provide objective executive coaching that will support your professional, business and personal development.

In-house training

Maximise the level of talent skills and performance in your organisation. We specialise in the design and delivery of practical, interactive and results focused in-house training. Let us help you develop your people.

Check out our website at www.jml-training.com
or call us on **01494 488787** for further information

SPEENSCHOOL & PTA

Alex Allen, PTA Chair

We are almost halfway through the first term of the year and pleased to report that all our children have settled well into school life following the long Summer. Our wonderful Village School continues to thrive with several new children starting in our reception class and two new teaching assistants joining the staff team.

The Sensory Garden in the school grounds certainly bloomed over the summer months and is looking fantastic. The children planted many of the plants and flowers in the Spring and a small team of parents help support Jeni Fairey with the upkeep of the garden.

We started the school year celebrating the 50th Anniversary of the school on its current site. The celebrations began with a dedication assembly including readings and singing from the children. Staff and children also held a tree planting ceremony to mark the occasion followed by a sale of tea and cakes run by the PTA with proceeds going to MacMillan Cancer Support. We were lucky to be joined by several parents and grandparents, past and present.

The PTA were also delighted to receive a very generous donation from the Speen Fete Committee at the start of term which is always much appreciated.

The children celebrated book week this year dressing up as children from all over the world. They covered all corners of the globe including New Zealand, India, Hawaii and the Falkland Islands and had all learnt a few facts about their country to share with their class.

Later in October the whole school travelled by coach to the Royal Albert Hall. The children were entertained by

musical pieces as part of the Music for Youth programme. The children also visited the Science Museum before returning to Speen.



Key Stage 1 children took part in a Multi-sports tournament held at Princes Risborough School in October. They competed with other Primary schools in our local area.

Our first social event in the school calendar is our Fish and Chip Supper with Quiz Night on 12th November. This is always a great way for the new parents to meet and get to know each other better.



Christmas comes early to Speen School this year with our annual Christmas Fair held in the school on Sunday 27th November from 11am. It is always lovely to see past pupils joining in the fun. The fair is fun, festive and child-focused, with craft activities and games, as well as a delicious lunch, and is open to all.



Looking ahead to 2017 the ever popular Safari Supper returns in mid-March. As always the evening begins with a starter at one of the host houses before moving on for the main course, after which everyone treks back to school for dessert and dancing until late. Look out for the date coming soon for your diary and for details to book your tickets in the New Year.

In the meantime, we would like to extend a big thank you for all the invaluable support and interest that the village gives the school. From the hard work of the Governors, to the weekly reading volunteers, midday supervisors and all who generously support our events, it is greatly appreciated.

www.speen-cofe-bucks.sch.uk

Nick Higgins
Forestry & Fencing
Contractor

m. 07768 383418
t. 01494 488835



45 Great Hampden
Bucks
HP16 9RJ

Seasoned logs
available

JOHN BISHOP *Est. 1972*
GARDEN MACHINERY

Sales & Service



HONDA
LAWN & GARDEN



Machine Hire

Scarifiers, Cultivators, Strimmers, Mowers
Hedge Trimmers

Blade/Chainsaw Sharpening & shear grinding.

We also stock a wide range of parts for various products.

Free Collection & Delivery



Tel No. **01494 563513**

Mob. **07917 106004**

1 Margaret Cottages, Northdean, High Wycombe, Bucks, HP14 4NH



**SPRINGLINE
CARS** PRIVATE HIRE

- Airport Transfers
- Events & Occasions
- London Trips
- Personal Service
- Owner Driver
- Local Knowledge

RISBOROUGH

01844 27 44 74

Know the voice, know your driver



Nelson Electrical Services

**Fully Insured
NAPIT Registered
Local Electrician**



No job too small
Free quotes given
No call out charge



Reliable and local service

www.nelson-electrical-services.co.uk

Contact **Michael**
07908 644058

M. R. COLLINS

GARDEN CONSTRUCTION

Est 1979

Driveway, Paving, Brickwork, Fencing
Groundworks, Excavations, Operated
digger hire.

We specialise in Block paving and all
types of slab laying Indian stone and
concrete offering a start to finish service
inclusive of excavations muck away,
supply and fix.

For estimate Phone: 01844 346360
Mobile: 07774 256732

SPEENWI

Jean Morris

As usual we are having a busy time at WI. Our speakers cover a wide range of interests. We had an excellent evening with Edwin Rye who inspired us to plant for our winter gardens and also found out about the trials of getting your literary masterpiece published or even how to become a film and TV Extra.

In August we were lucky to hold our Afternoon Tea in the Garden on a rare bright and sunny day. Tea and cakes, a plant stall and the sale of hand made cards all contributed to a profitable afternoon. The money raised will go to help the maintenance fund at Denman, the WI's own college. Many of our members enjoy short breaks there learning to cook, craft, improve their photography or IT skills or take part in a wide variety of other activities. One member recently attended a 'write your life story' course, so may find the publishing tips at the earlier meeting useful! Whatever your interest you will find a course to suit in this beautiful old house in its lovely garden setting.



The gardens at Denman, the WI college in Oxfordshire

This winter we are holding another jewellery making workshop, an afternoon making Christmas Wreaths and we shall of course be having a seasonal meal at a local hostelry.

November is our annual meeting when we review our year and look forward to the next. It looks to be as busy and interesting as ever with another year of good speakers and several other activities.

Anyone is welcome to visit a couple of times before taking the plunge and deciding to join us. The programme is in the magazine and also on the Village Diary.

Find us on the village website or at www.thewi.org where there is plenty of information, or e-mail us to ask any questions.

Tel: 488529 • spewnwi@gmail.com



Speen WI members enjoy their Summer Garden Afternoon

THE BROWNIES

Ellie Deakin, Assistant Leader, 1st Hughenden Valley Brownies

Brownies take a walk on the wild side!

During the summer term the girls of the 1st Hughenden Brownies, who meet at Speen Scout Hut every week, went to Woburn Safari park, as part of their Wildlife Adventure badge, which aims to help the girls gain an appreciation of wildlife both at home and in different countries.

The sun was shining as we embarked on our adventure to the safari park, clipboards in hands and smiles on faces, the girls were excited to see all the animals the park had to show. Highlights of the day included seeing the lions and elephants, and receiving an informative tour from

a Zoo Keeper about all the different animals within the park. The talk given by the Zoo Keeper told the girls all about the natural habitats of some of the animals, as well as informing them on endangered species. Lots of questions were enthusiastically asked, allowing the girls to complete their worksheets and quizzes, meaning they could all walk away at the end of the day having completed their Wildlife Adventure badge.

I think it was safe to say that everyone had a fantastic day out learning about wildlife and having a great time making new friends!

ALLIED HEALTHCARE

As a population we are getting older and many of us will be faced with finding nursing or personal care for an elderly relative or planning our own future care if we become incapacitated. Bucks, residents are increasingly making a choice, where possible, of living in their own homes for as long as possible and the local branch of Allied Healthcare is aiming to make this option easier.

The local branch of Allied Healthcare has been operating for over 27 years, based just outside of High Wycombe, has a proven track record of providing domiciliary care in the community.

Increasingly there are fewer hospital beds and long term care homes that are accessible to those needing help, support and care, and most people, if given the choice, would prefer to be treated at home with their own possessions around them. We can offer a wide variety of Care calls from 15 minute pop-in call, once a day to multiple calls or indeed a full time Live In Care.

The offices of Allied Healthcare at High Wycombe are able to help with assessing your needs and advising on all aspects of your care. Before care starts you would be visited by our assessor to ensure that a comprehensive care plan was written and tailor made to suit the needs of the client. This can be for a basic care package to a more specialized and complex packages in the case of a serious illness. We will help you to consider whether you need a fulltime carer, perhaps a special bed or other equipment, or maybe additional carers at certain times of the day to help with lifting or turning. If needed you would have the advice of the 'In House' Trainer to advise on specialist Moving and Handling issues. Allied is willing to go the extra mile to provide the highest standards of care. They try to ensure clients build a relationship with a small team of carers rather than having a constantly changing set of faces. They recommend the use of a Keysafe which ensures a carer, can always gain access to a client's house to provide the care and raise the alarm if needed.

All of the Care workers are trained to the highest standard as required by our regulators, CQC and our stringent internal audit team. Many of our workers have training and expertise in specialist areas but if we needed to we would provide training to meet a specific need of a client.

If you would like more information about Allied and the services we offer then call 01494 488040, and we can meet with you for a no obligation visit or provide you with details and costings of our services.

Work for Allied Healthcare

We always have a need for additional employees to support the services we offer. If you are interested or know of a friend who is interested in joining us as an employee we offer an attractive package. We provide care across the High Wycombe and surrounding areas.

Care & support in the comfort of your own home

Do you or a relative require care or support to live your life the way you choose? If so, Allied Healthcare can help. We have been offering an excellent dependable service in the Buckinghamshire area for over 27 years.

SELF DIRECTED SUPPORT & PRIVATE CLIENTS WELCOME

Full assessments carried out before care commences. All our staff have extensive training and have enhanced CRB checks. We also offer call monitoring.

The range of services we offer

- Visits (1/4, 1/2, 3/4, HOUR)
- Live in/24HR care
- Holiday cover
- Waking nights/sitting
- Assisted bathing
- Light household duties & shopping



All about you

For more information or assistance please call

01494 488040 / 01494 488141

Email: highwycombe@alliedhealthcare.com

If you are interested in becoming a Carer or working with Allied Healthcare then please call the numbers above for more information and an application pack. Allied Healthcare is an equal opportunities employer and is regulated by the CQC. Allied Healthcare is committed to safeguarding and promoting the welfare of children, adults and young people and expects all staff and volunteers to share this commitment.



SPEENCHURCH

Heather McIntyre, Minister

We have been blessed recently with some beautiful days as we have moved gently into the season of autumn.

One such day was October 9th - the sun flooded through the chapel windows onto an abundance of produce arranged for our annual harvest celebration. We were delighted to welcome Heather Stanley from One Can Trust to our service and she spoke movingly of their work and brought us news of their brand new premises in High Wycombe. We were delighted to be able to contribute gifts of both produce and money to One Can Trust and to the work of Saunderton Lodge.

Back in July, the chapel garden proved to be the perfect setting for afternoon tea and croquet, as we held our summer fundraiser for LIFT, although its steep gradient proved a challenge for even the most proficient croquet players! Again the sun shone as we enjoyed one another's company and delicious refreshments.



I hope that all of you reading this will see Speen Church as your church. There are many groups and activities which you can come and be part of and there is always a warm welcome for all ages at our Sunday morning services.



For more information on the church do visit our website www.speenchurch.org where you will find out more about us, our calendar of events, an update on Project Restoration, as well as more details about the LIFT and other projects we support.

*With warm wishes,
Heather*



SPEENvNORTH DEAN GOLF

Charlie Pearson

We managed to entice 29 players to Beaconsfield for a re-run of our rain cancelled match last May.

The day started with a full English breakfast, possibly not ideal for athletes like us, but eminently acceptable. The golf was played in beautiful autumn conditions and the course was in fantastic condition.

Speen managed to hold on to the trophy, scoring an average of 26.47 points. North Dean managed 24.50. The village champion was Will Gardner who scored 38 points

playing off a handicap of 6. Us mere mortals were in awe! Alex Norbury and Gerry Cranley tied for third place on 34 points. John Mulry was runner up on 37 points. The longest drive was by Gerry Cranley, not far off 300 yards. Nearest the pin went to Graham (I don't think many got on the green).

We even managed to sit out afterwards enjoying beer and sandwiches.

I hope everyone enjoyed the day.

Award winning Design

Extension • Conversion • New Build

Overall Winner

Chilterns Design Awards 2015

Regional Finalist

Local Authority Building

Excellence Awards 2015

SQU4RE



Jeremy Symondson

Foursquare Land Limited

Old Smithy, Great Hampden,

Buckinghamshire HP16 9RF

jem@4squareland.co.uk

tel: 01494 488877

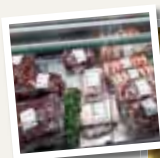
mob: 07789 201616

NEW

Buckmoorend farm shop



HOME REARED MEATS AND LOCAL PRODUCE



On the Chequers Estate, Butlers Cross

info@buckmoorendfarm.co.uk

www.buckmoorendfarm.co.uk



01296 620493 Butlers Cross HP17 0UT



SPEEN STORES

Your useful little shop

Freshly baked bread daily

Sub-Post Office

Fresh Fruit & Vegetables

Free Range Eggs

Homemade Cakes

Handmade Greetings Cards

Please visit the village website

www.speenbucks.org.uk

for opening hours and more information



Newsletters

Leaflets

Programmes

Brochures

Folders

Labels

Stationery

Carbonless

Instructions

Printers of Speen & North Dean News

DESIGN, ARTWORK
DIGITAL & LITHO PRINT
all under one roof

8 Wycombe Industrial Mall

West End Street

High Wycombe

Buckinghamshire HP11 2QY

T: 01494 452266

F: 01494 452216

E: mail@pkinprint.co.uk

W: www.pkinprint.co.uk

CONTACT US NEXT TIME YOU NEED A PRINT QUOTATION
if it's on paper we print it

SPEEN FETE AFTER PARTY

Amanda Dobbs

On 29th September Speen Fete committee had its after party to: *Celebrate* the day, *Pay out* the funds, *Award* the winners and *Put out* new ideas. It was an evening of fun and laughter, having drinks with friends and neighbours, meeting new Speenies and thanking the wonderful villagers who help and support the Fete every year; in essence a celebration of what is great about Speen.

This year our Charity was Speen Pre-School and Mrs Davies, Chair, was on hand to accept a whopping cheque for £1,500.00 The other community groups Speen School, The WI, The SNDN, Playing Fields, Village Hall, Scouts, Guides and Heritage Group all received their contribution from our President Mr D King.

We also celebrated the winners of the Scarecrow competition, sponsored by Tudor Travel, which was embraced by the whole village. The Winner, Jane Calvert, was there to collect her trophy with son Harrison. 2nd place winner Kathy Buxton and 3rd place winner Speen Stores were unable to attend so their trophies were accepted by Jacqui Laing and Carol Stringfellow.

The 'Speen Events Pod', with suggestions of community events you might want to see, though not widely

responded to by the village before the event, had some great suggestions on the night, and the Champagne prize draw winner from the evening was Charlotte Harrison.

Over the last two years Speen has changed the way it socialises. No longer does the community come together on a regular basis with all ages joining together, so how do we help the new families to meet people and forge new friendships, or for the older generation to feel part of the wider community? We do it by having community events like the Fete. It's a long-standing tradition that also attracts families from all over the county, and provides much needed funds for the local organisations, and it's a great way to get involved and meet people while helping your community.

We are always looking for new ideas and new ways to make it a fun day and every year is better than the last so let's look at the last 7 years and see if YOU can help make next year another success.

Thank you all for your support on the evening and making my final act as Chair such a fun occasion. Also a big thank you to Tudor Travel for sponsoring the evening.

PS. The Fete now needs a new Chair if it is to continue.



NORTH DEAN VILLAGE FETE

Alison Kent

We had SUCH a fun day! A handful of celebrities, a great turn out and good weather all contributed to a fabulously successful 2016 village fete.

For the last 8 years the village committee has been headed up by Andrew Howard but sadly this year's fete was his last day of being the village Chairman. For those years, Andrew has provided resource, enthusiasm and funds for the success of the events. The village owes Andrew a huge THANK YOU.

So it was appropriate that Andrew's last fete had a car and football theme. We had some beautiful old cars on display and some modern racing cars too. These proved very popular by the number of votes for the best displayed car. The competition tent was very busy. The prizes were given out for the second year by Paul Hollywood, who encouraged people to enter and 'have a go' next year. Susie Howard did an amazing job of organisation!

The inflatable football pitch was a huge success; provided again by Wycombe Wanderers FC. It was a joy to see three or four generations of chaps being SO competitive, active and having a great deal of fun, however it may be an idea to have St John's Ambulance in attendance next year!!!!

The Tea Rooms, as ever, were a huge success and our thanks really must go to Judy Keen for her commitment to providing everything necessary and her hardworking team of ladies.

The running races! Well again all I can say is that they were extremely popular and we laughed! The marked out track saw the youngsters being competitive to the extent of racing every race; a 12 year old told me he could take part in the next one because he was under 40! It was a joy to watch.

The Tombola did well, the raffle was a success, the bar popular as ever (and brilliantly run) and so with so many laughs and such fun, we deem the day a hugely successful fete. Next year will be different but we have some good things in the pipeline. So see you there.

A special Thank You goes to the committee who obviously have supported Andrew in the past and who are devoted to the village cause, but a special mention must go to Jez Wicks and Steve Rogers who have been involved for years as unsung heroes! And Thank You to all who helped in some way; however small.



NORTH DEAN VILLAGE FETE

Alison Kent

Congratulations to the following competition class winners at this year's fete:

Pot Plant

The Campbell Cup
Winner: Rosemary Petty

Arrangement of Cut Flowers

The Weller Rose Bowl
Winner: Ginny Prentice

Single Bloom

Silver Rose Vase (Mrs Olink)
Winner: Rachel Palmer

Sloe Gin or Vodka

The Beechdean Cup
Winner: Ralph Cox

Fruit Cake

The Farmhouse Cup (Mr & Mrs Cash)
Winner: Jan Allen

Chutney

John Lewis Bowl
Winner: Gill Sandford



Fruit Jam or Marmalade

Silver tray (Mrs G Rogers)
Winner: Jan Allen

Six Fairy Cakes

Winner: Larissa Clegg

Victoria Sandwich

(Mr & Mrs N Dawson)
Winner: Alison Kent

Vegetables

The North Dean Challenge Cup
Winner: Gill Sandford

Prize Vegetable of The Year

The Beau Vista Bell (Mr & Mrs J Rogers)
Winner: Gill Sandford



Handicrafts and Art 15 yrs & older

The Rogers Bell
Winners: David Punter

Art 15 yrs & older

The Rogers Bell
Winners: Christine Ryman

Junior Handicrafts 14 yrs & under

Junior Silver Cup
Winner: James Palmer

Junior Art 14 yrs & under

Junior Silver Cup
Winner: Ellen Sandford

Photography Colour

The Evans Bowl
Winner: Christine Dunnington

Photography B&W

The Morgan Cup
Winner: David Punter



Paul Hollywood presenting Anthony Palmer with a prize



... and Ellen Sandford



Gareth Ainsworth WWFC Manager with Nigel and Sheila Rolfe

Other Things....

We have some superb events lined up this side of Christmas; a Wine tasting evening in November and a second pub night to incorporate our Christmas Carol evening in December. The New Year will see a car treasure hunt and Solstice Cocktails on the Hill. We are also organising a cricket match - Speen vs North Dean - in the spring. So chaps dig out your whites and get to some nets!

Watch out for the village diary for further dates and events.

All VERY welcome!

50 YEARS OF MUSIC CAMP

Nick Wheeler-Robinson

In 2015 friends at Pigotts were asked to choose their three favourite words to describe Pigotts and Music Camp. 750 words were volunteered, of which the most chosen were music, community, friends and family. Izzy Rogers, a poet camper, used almost all in this poem, which was set to music by Ian Stevens for our celebration.

Pigotts at 50

Music and friends.
Threaded through the
Unique harmony
Of our extraordinary family:
We weave a haven out of magic.
This place is special.

A musical utopia,
A fabulous discovery
Encouraging community,
Stimulating happiness:
Eccentric and creative bliss.

It is playful, fun, intense -
A bonkers, muddy place in tents.
Reveille sirens though the cold
The beauty of a porridge bowl.
Amazing food and quirky barn;
Challenging, yet full of charm.
Glis glis falling from a rafter,
Wellies, cocoa, joyful laughter.
Bucket lats no longer fester
Since we put in our klargester.
We find teamwork washing up
And playing for the pingpong cup,
Welcoming Orleta dancers,
Painters, poets, life-enhancers.

Bernard's inclusive inspiration
Taught us an irreplaceable song.
It drifts in the calm arboretum air
And around the Narthex fire.
Friendly. Gemütlichkeit.

Sunset brings forth wine -
Let there be dancing and love.
A party with alcohol and romance ...
Nights on the beechwood hill are wonderful warm
Belonging to an ageless gratitude.
It is a liminal world
Where peace and joy grow
And our hearts come home.



50 YEARS OF MUSIC CAMP

Nick Wheeler-Robinson

Over August Bank Holiday weekend 2016 there was a celebration of 50 years of Music Camp at Pigotts. Over three busy days more than 400 Music Campers of all ages came to HP14 and drove slowly up our narrow, pot-holed lane, past a sequence of welcoming posters.

How did we celebrate? And what now remains?

Each day's music was rehearsed in the morning and, after a long break for lunch, played through before tea. On Saturday we looked to the *Past* - some of the music had been played at the first Music Camp in 1927, some written specially for the 100th Camp. On Sunday we concentrated on the *Present*, which included two compositions commissioned from camper/composers for the occasion - one orchestrated and one choral - setting the words of the poem on the opposite page. Monday was the day for the *Future* and many young people sung and played happily, enjoying a fine version of the 'Ride of the Valkyries' with special parts for beginners (in this, three families had three generations playing!).

Over the three days there were various events, musical and otherwise, playing through all the Brandenburg concertos, a special fanfare, a ceilidh, dinner for 240, a pig roast, a bonfire in the woods, an exhibition of the work of the 'Thursday Painting Ladies', the planting of two hornbeams by the children (will they be here in 2066?) and a procession to the 'opening' of the largest pond here after cleaning out, lining and refilling (this was a wonderful 80th birthday present for me - a month early!).

To mark the occasion two new books were on sale - my memoir of my father (reviewed overleaf) and a lavishly illustrated cook book, with recipes, stories and warnings from the kitchen (want to know how to produce a fine

meal for 140 or what happened to our subterranean oven? It's all here!). A talented designer, himself a Camp grandchild, produced a tree design, using words from the poem, which decorated a splendid special sweatshirt. Over the weekend an 'official' photographer recorded many special groups - pre-1966 Campers - 42 in all, conductors, cooks, those with Camp ancestors etc, and many less formal shots of individuals talking, eating, hugging, playing, singing and laughing. A dozen or more photographers contributed to the thousand or so images now on the web. The Singing Barn had a huge display of old photographs from most of the 170 main Camps supplemented by dozens of albums and other memorabilia. There were repeated showings of various silent films - the oldest made in the 1930's - including the film of our building of the Main Barn 50 years ago.

Each evening the courtyard was lit by many, many fairy lights strung across it, and as I write this in late October our small tree still lights up with solar powered lights each evening to remind us.

So we had three delightful days. A week before I had looked through the 'expected' list, putting down the names of twenty real old friends I had not seen for far too long - and I had time with each of them (bar one who didn't come). I think many people had a similarly happy experience.

That everything went so well was due to a great deal of planning, the readiness of able people to take on organising different parts of the programme and the goodwill that abounded. Jeremy and Alice Hamilton, good friends and now residents on this hill, made the greatest contribution.



PUB NIGHT IN NORTH DEAN

Alison Kent

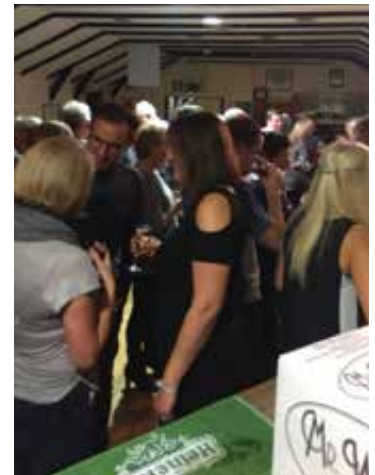
So just like Speen, North Dean used to have a pub too ! It was called the Sportsmans Arms. What better name to give the village hall for a night whilst turning it into the local pub!



Prices were kept relatively low (a non profit-making SOCIABLE evening) and it was such a success that we are planning a second night in December (20th) at 7pm to incorporate Christmas Carols.

We decorated the hall and constructed a bar; we hired a free play Juke Box and a great number of friends and locals turned up to enjoy a really fun and sociable night. The table football proved a hit, as did the darts board.

Thank you to all the Speenies who supported us and we very much look forward to seeing you again for a drink in December.



K. J. WINDOWS & DOORS

UPVC WINDOWS & DOORS

CONSERVATORIES

FASCIA & SOFFITS

BI-FOLDING DOORS

MISTED & BROKEN UNITS

REPAIRS

ALL WORK GUARANTEED

CALL KEITH: 07539 367200

BOOKREVIEW

Nick Wheeler-Robinson's memoir of his father's life, reviewed by Christopher Boyce

BWR - An Adequate Life?

In the summer of 1927 a young Cambridge research physicist got together with thirty-five friends to make music for a week at Poynders End near Hitchin. They were evidently a talented group of people - most joined in the choral singing as well as playing one or more instruments in the orchestra.

Eighty-nine years later this music-making with friends (aka 'Music Camp') continues, on a rather larger scale, at Pigotts, up the hill from North Dean. The research physicist was Bernard Wheeler-Robinson and, as many of you will know, Music Camp has been run by his son Nick for many years now. The principles for this venture are unchanged since 1927: participation is by invitation; participants provide their own accommodation - tents or camper vans; the costs of feeding and watering the musicians are kept to a minimum and shared equally among all; everyone (no exception) helps out with jobs. If you walk past Pigotts during the summer you are very likely to hear the sound of happy music making (of a very high standard) and to see lots of people of all ages milling about having a great holiday.

And 2016 was a special year - in August Pigotts celebrated 50 years of Music Camp on this site. (See Nick's account of the celebrations on the opposite page). On Day 3 Nick invited local friends to join in the festivities. For me the highlight (apart from eating very delicious chocolate cake) was hearing Wagner's 'The Ride of the Valkyries' performed by a large orchestra ranging in age from six to seventy-six (and conducted by our very own Sam Laughton, a long-standing music camper, with Kate and all four children playing in the orchestra).

To mark this 50th anniversary Nick published a memoir ('BWR - An Adequate Life?') of his father Bernard, who was clearly a very accomplished man. He was a distinguished scientist: in the course of his career he worked at the Cavendish Laboratory in Cambridge, the Royal Military College of Science and for the Ministry of Aircraft production at the Royal Aircraft Establishment

at Farnborough. In this last role he led a small team from December 1939 onwards to develop a 'gyro gun sight' to provide more stability for machine guns in fighter aircraft and so improve their accuracy. The device was in use by D-Day and enhanced significantly the effectiveness of these guns during the rest of the war.

Bernard had a life-long interest in understanding how things worked, and he carried this into his private life too. In his Memoir Nick relates that in his late 80s, in the John Radcliffe hospital in Oxford for prostate treatment, Bernard asked for mirrors to be arranged so he could watch the operation. (For the record, they refused).



Bernard's career as a research scientist happily left him enough time to pursue his first love - music, in particular, conducting, and playing first violin in string quartets. (A Cambridge academic once said of Bernard 'Ah ... Bernard Robinson ... he would have become a great scientist if he had not been so keen on music').

Music Camp started in Bedfordshire, moved in 1935 to Bothampstead in Berkshire and then again in 1966 to Pigotts, three years after Bernard and his wife had bought Eric Gill's house. The Music Camp tradition has gone from strength to strength. In some cases current music campers are the third generation of their family who have enjoyed these wonderful, creative holidays. The standard of music making is very high; some who were Music Campers in early life went on to become distinguished professional musicians - [Sir] Colin Davis, Denis Brain, Peter Pears and many more.

Writing this memoir has, I sense, been a journey of discovery for Nick. He had not spent much time with his father in earlier life but got to know him much better when he was looking after him at Pigotts. (Bernard died in 1997, aged 93). Nick's account of his father's life and many achievements is full of respect and affection and peppered with touching and amusing anecdotes.

Reliable, Friendly Service
Taps, Leaks, Drains, Loos

Any Local Plumbing

Restoration to Renewables

Central Heating & Controls

Gas, LPG, Heat Pump & Electric

Registered for Gas and Electrics

Based in Upper North Dean

Paul's Plumbing
07786 175123

ELECSA
Part of the ECA Group

**Part P
Approved Contractor**

www.elecsa.co.uk

Local to Naphill, Walters Ash
Lacey Green, Speen, Hampden
Hughenden, North Dean



199757

Electrics - Bathroom, Heating, Etc.
Registered for Self Certification

Paul Newman Ltd. 01494 565573

BEECHDEAN DOWN ON THE FARM

Gill Kent

The agricultural industry has long recognised that the rural population is becoming increasingly divorced from the urban dwellers, who dislike anything to do with mud or smells! The latter regard the countryside as a pretty area for recreation which is inhabited by birds, butterflies and small mammals; many of them do not realise that it is the work place which produces much of our food.

Open Farm Days help to give some people an idea of the farm environment, (although they do not realise that everywhere has been tidied up for the occasion!) If every school leaver had to work on a stock farm for a week, they would experience hard physical labour for long hours, but hopefully they would gain an understanding of the rewards of working alongside nature.

The CPRE (Council for the Protection of Rural England) has recently published its report named New model farming; Resilience through diversity. The report, for me, epitomises the thoughts of those have not worked the land or been faced with the realities of a diverse countryside.

The contributors make many very good suggestions such as "Increase the availability of land ownership through a package of measures" and "ensure the long term financial stability of farming" and "improve innovation and resilience across farming; a new national programme of farmer field schools would help" and finally "Green farming should be supported by strong incentives". My observations on their report follow:

On the continent the Napoleonic Laws of inheritance result in the land being split into much smaller units meaning

the next generation get a share, resulting in most of the population having an interest in the countryside. Many may feel that this situation would be desirable in the UK but our inheritance laws tend to result in the eldest son inheriting the land, so as things stand an increase in available land is not likely to be on the agenda (one result of this suggestion would be a breakup of the large estates which

are a magnificent feature of our countryside eg: The Chatsworth Estate).



The Chatsworth Estate is 35,000 acres



Berkshire College of Agriculture



Working conditions on small dairy farm

New national farmer field schools are certainly not the answer as there are already many good institutions. Although the Bucks college at Stoke Mandeville no longer exists, the Berkshire College at Burchetts Green now has a thriving agricultural section again (having been closed down in 2003). Harper Adams College is now one of the top universities in the country. The truth is that young Brits are looking for managerial jobs in farming, when what is needed is someone to do the hard physical work.

'Green farming' is a laudable aim which cannot always be achieved. For instance, in the Chilterns, the productivity of grass fields and grain crops would be minimal if farmers were not allowed to fertilise them. Organic farming can only be successful if the soil is inherently fertile and so must be ruled out of our chalky hills. If only such learned institutions such as the CPRE and the BBC would

send their members and presenters to live on a family farm for two weeks, then they would find out the true nature of farming and maybe bring town and country together a little.

VILLAGE ENVIRONMENTAL SERVICES

DOMESTIC DRAIN SERVICES

Proprietor: Dennis Cook
Est. 1979

BLOCKED DRAINS?

FAMILY RUN BUSINESS SINCE 1979

BLOCKED DRAINS CLEARED

REASONABLE RATES

CCTV DRAIN SURVEYS

NO EXTRA CHARGE FOR EVENING, WEEKEND OR BANK HOLIDAY CALLOUTS

FULL PUBLIC LIABILITY INSURANCE

CALL US DAY OR NIGHT

**24/7
CALLOUT
SERVICE**

07850 635 844 01296 624 221 (MESSAGES)



Coles & Blackwell

Car Service & Repairs

Book online at:
www.colesandblackwell.co.uk

Quality car servicing and repairs much closer than you think!

Where are we ? You will find us 300 metres down the small lane opposite the top of Bradenham Wood Lane in Walters Ash, High Wycombe HP14 4UX

Established in 1959



Servicing

Did you know you can get your car serviced by us without invalidating your manufacturers warranty? Legislation passed a few years ago means that you can now choose any garage of your choice to service your vehicle.

Courtesy cars

We have a fleet of new loan cars at your disposal whilst we service your own car or repair bodywork damage. Best of all - they are FREE OF CHARGE!
All part of the service you come to expect from Coles & Blackwell

air conditioning _____
mot testing _____
vehicle servicing and repairs _____
crash repairs _____
tyres, clutches & brakes _____
computerised diagnostics _____
batteries & exhausts _____

Open Monday to Friday 9:00am to 5:30pm
Saturday 8:30 am - 12:30pm

01494 563102

Local Ladies Swim To Raise Funds For Type 1 Diabetes Charity

A chance meeting over supper at mutual friends has led to a new interest and great fundraising success for Charlotte Downing and I.

Four years ago my son Tom was diagnosed with type 1 diabetes; relying on multiple daily insulin injections and blood glucose tests every day just to stay alive. Type 1 diabetes is an autoimmune condition and is not linked to lifestyle factors such as diet and exercise. Over supper Charlotte and I got chatting and we discovered we both had a passion for swimming. By coincidence Charlotte's niece also has type 1 diabetes. Charlotte had previously completed an open water long distance swim and I was interested in taking part in a similar event. Our family had previously completed sponsored walks for JDRF, a charity dedicated to finding a cure and improving the lives of those dealing with this condition, and so we both decided to sign up to their annual 1.5km swim over the course of Henley Regatta.

We commenced training, taking regular dips at Marlow Lake, and enjoyed many laughs along the way. In June 2015 we completed 'The Henley Mile' swim in good time and raised £2,500 between us, having thoroughly enjoyed both the training and the swim.

Ironically just a couple of months after the swim I too was diagnosed with type 1 diabetes which is quite unusual for someone of my age. I felt strongly that I didn't want to allow this to hamper my swimming efforts although it inevitably made things a little more complicated. Exercise, stress and cold water all have a marked effect on your blood sugar levels and with no working pancreas this means I have to ensure I always have glucose stuffed down my wetsuit in



order to prevent a debilitating 'hypo'. This is when blood sugar levels fall too low and there is a risk of unconsciousness which would be undesirable when swimming in open water to say the least.

We decided we wanted to push ourselves a little harder and this year signed up to do a 2.2km swim up the Thames, getting into the water at 4.30am in order to swim as the sun rises. We both felt this would be suitably challenging and once again commenced our training.

The day of the swim arrived and we nervously entered the river. I must admit I hadn't factored in the effect of recent heavy rain which caused a strong downstream current and the swim took me much longer than anticipated. Charlotte completed the swim hours before me and paced the river bank nervously looking out for me. Eventually I came in, flanked by safety boats encouraging me on, finishing last of the swimmers (many having already dropped out before/ during the race) but very happy to have completed. Our fundraising efforts paid off and we have raised a total of £3,500 for JDRF.

Charlotte and I have had so much fun and she has been an amazing support to me. Being the stronger swimmer she has encouraged me on and inspired me to keep going. Special thanks must also go to our husbands Antony and Adrian who have put up with us leaving the house at 6.30am on Saturday and Sunday mornings to thrash around Marlow lake.

We will definitely continue with our swimming and I have an inkling some further challenge will present itself at some time in the future.



The Show Must Go On...

A few years back, Louise Wilson from North Dean, and long-time performer and director of Speen Festival shows, mentioned in passing that she'd like to write the book for a musical. A year or two later I found out that the head of music of a local school who attended Speen Chapel had written a musical or two. Eventually this year we all met together and plotted to make it happen. Since then I've left them to it. Lives have moved on; but apparently (according to Alice Wilson, see below) and, perhaps miraculously, it may actually come to fruition.

So a new musical written especially for our village, as used to happen in the infancy of this Festival, will be performed, if the Village give it their blessing, next September. Perhaps, if we do it well, it will have a life beyond Speen. Maybe even Broadway. One can but dream.

Shows need producers. Just one person excellent at persuasion and being lovely to everyone even if they still don't know their lines just days before the first night (mentioning no names). In the past these people have been Kate Vale (amazing cakes), Debbie O'Brien (amazing, well, just amazing because she also directed), Judith Newenham (who hit big time this year performing Opera and dressing up LOADS - you see this can take you places), and finally me.

I'm already producing a new opera, Silver Birch, for Garsington Opera next year so I can't take on any more. None of us probably felt we had the time or experience to organise a Speen Festival show at the time, but we did anyway. And we all loved it. So we're not asking you to run the Festival (that's a completely different issue) but just to get the show on the road.

We can hardly not make it happen; over to Alice who speaks for those who have grown up with the Festival:

“ You will no doubt have felt the immense lack of Speen Festival in your life this year, but fear not, it will soon return. The artsy musical types have been at it again, singing and dancing their way to a plan, to bring you:

ROBIN HOOD

AN ORIGINAL MUSICAL!

Times are tough for the (surprisingly musical) villager peasants under the tyrannical rule of the Sheriff of Speen and his wife's expensive tastes. Luckily a small group of outlaws have united to fight against this villainy. Not since last Festival's wilderness Camp Night have the villagers of Speen been so happy to have strange men and women hiding out in the woods. With a script by Louise Wilson, and music by James Woodhall, this upbeat adaptation is sure to bring life and laughter to the English legend.

The Festival is a chance for people of all ages and abilities to join in and help create a performance. We need merry men and women (of ages 7-107) for chorus and larger roles. Audition dates will be held in the Spring. If it's not acting that excites you but set design, stage managing, hair and makeup, costume, props, chaperoning or one of the other ways you can get involved, then please get in touch. ”

Alice Wilson

Most likely performance dates are Thursday 7th, Friday 8th and Saturday 9th September 2017. A production week will take place at the end of the school holidays from the Bank Holiday onwards so if you or anyone in your family would like to take part, please keep these weeks free.

It's a testament to the endurance of the Festival that Jeni Fairey is so keen to keep the summer SpeenSchoolFest! programme for local schools on the road. Read about her campaign here:

SpeenSchoolFest! 2017

Many of you will by now be familiar with the exciting activities which SpeenSchoolFest! has provided for many local children each June. This event was the brainchild of Kate Laughton who has run the fantastic Speen Festival for many years with her husband Sam. SchoolFest originated as an offshoot of this and provided an opportunity for local schoolchildren to come together to participate in creative arts projects.

What is SpeenSchoolFest!?

In a nutshell - an Annual Summer Creative Arts Festival for local school children. Parents, teachers, community volunteers and professional creative artists work together to provide fun-filled days for over 100 children from local schools.

What are the benefits?

The children have the opportunity to meet a wide variety of new friends, but in addition the involvement of Speen Pre-School, Speen School and St John's C of E School as well as other feeder schools for St John's means the transition to new schools is smoothed by providing a fun environment to get to know prospective new classmates.

The valuable involvement of family members and volunteers from the village and surrounds has a really positive impact on the children's experience as well as strengthening community bonds. Children get to take part in a wide range of arts-based activities, extending their broad spectrum of school experiences. These involve music, creative writing, art and craft, drama and dance.



And finally ... next September, if we leave the marquee up for a few extra days, do other people have creative events they'd like to organise? As you probably know, the Laughton family have retired from actually RUNNING A FESTIVAL, but if you would love to make another Speen Festival happen (and SpeenSchoolFest! depends on this) – and maybe raise a bit of money for charity or for a good cause out of it, or host or organise something yourself, or just want to give some practical

The Future

Many parents whose children have already enjoyed SchoolFest are still keen for it to continue. It is felt that a team of committed people are needed to ensure its success in the coming year. Of course, parents with hidden creative talents would be a welcome addition but you do not need to be an 'artist' to help out - this is a time for getting stuck in and having fun with the children.

Roles to be filled are as follows:

Overseer - scheduling, chair meetings, looking after the team, interschool communication

Administrator - organise meetings, communicate with parents, deal with funding

One Art and craft leader + two helpers;

One Music/ creative writing leader + two helpers;

One Drama leader + two helpers

On Wednesday 2nd November at 7.30pm a meeting will be held at Speen School to discuss how SchoolFest will proceed in 2017. If you have any questions or comments about the meeting please e-mail either the school or me.

Thank you!

Jeni Fairey

jeni.fairey@gmail.com



support – please come to an informal Speen Festival get-together at Aquila Lodge, Dairymede on Tuesday 15 November at 8.00pm.

Please RSVP to SpeenStrings@gmail.com by Monday 14th November with any ideas you might like to share.

Then we'll take it from there.

Kate & Sam & Sue,

Hugh, Jessie, George and Edward Laughton



Your Local Mobility Shop Independent Living Consultants



**Small aids for everyday
independence!**



**Larger items for
mobility and comfort.**



Call us, or visit our showroom :

01844 27 30 50

10 Woodway, PRINCES RISBOROUGH HP27 0NN

www.IndependentLivingConsultants.co.uk

Nicki Thomas Web Design

**Creating bespoke websites
for a
wide range of businesses**

Visit www.nickithomas.co.uk
to find out more...

Hedgerows, Studridge Lane
Speen, Princes Risborough
HP27 0SA

Tel 01494 488665

Email nickithomas@storecomput.co.uk

PILATES PHYSIOTHERAPIST

Diana Cliffe MCSP HCPC

- Pilates for the relief of Back Pain
- Individual sessions and local small classes
- Rehabilitation after Joint Replacement



Tel: **01494 562899** (North Dean)

Mob: **07767 096609**

Email: physiodiana@gmail.com



FRASER-MORGAN SCHOOL OF DANCING

***** Naphill Village Hall *****

RAD BALLET for ages 3+

For more information
please contact
**01494 816539 or
07974 121081**



**01494 816539
07974 121081**



WILDLIFEWATCH

Peter Symonds

Autumn 2016

The second part of the Summer has thrown up a few surprises. Having had three broods of Mallard ducklings in our garden from different females I was astonished to then have a fourth brood of seven ducklings arrive on 11th July. Having had a high percentage success with the first three broods with about 19 of some 30 ducklings flying off, this last brood only resulted in one survivor which has recently left the garden. We are now just left with a resident male who seems to have one wing which is not fully formed.

Ravens are increasingly recorded around Speen and the district as a whole. Their distinctive "cronking" can be heard from a considerable distance as they fly over. Grey Wagtails have been seen in our garden on several occasions during August and September. The two juvenile birds are possibly ones that were fledged in Hughenden Park earlier in the year. A couple of interesting records from Great Hampden include a Barn Owl on 21st August and 30 Stock Doves on 30th September. Most of our Summer visitors migrate south and unusual birds can be recorded on passage. A Redstart reported by Chris Carris down Highwood Bottom is a good example of a bird we do not see around here regularly. Good numbers of Comma butterflies, Red Admirals and Brimstones have been noted on woodland brambles whilst several hornets have been seen looking for sites to overwinter. Several young Roe deer are present both in Speen and also in Great Hampden.

The late Summer period can be very quiet from a wildlife point of view and I often wonder where everything disappears to. Most birds are finished breeding and I

regularly clean out my nesting boxes at this stage. I was therefore shocked to find a newly hatched single Stock Dove chick in one of my Tawny Owl boxes on 9th September. The local Glis glis seem to have had a bumper year. Numerous people have reported trapping these animals in their lofts where they can be both noisy and damaging. They are also using nest boxes around the village and seem to be able to by-pass most of the protective safeguards available. Neither metal plates nor plastic cones seem to stop them accessing most nest boxes. Having found some using my own boxes I started checking former woodpecker holes in the woodland and they all seem to contain Glis as well, suggesting they pose an increasing threat to our local birds. The local Tawny Owls may be one of the few predators that can exploit these nocturnal animals. An unhealthy Tawny Owl found on the playing field was delivered to Tiggyswinkles by Pat Anderson but this one in fact died of a worm infestation. A young sick badger found by Jo Binder down Flowers Bottom during a dry period in August was also taken to the same hospital but died on route.

During October our woodlands have taken on glorious vibrant Autumn colours and overhead our wintering birds start to arrive. Flocks of 30-40 Redwings were noted on 9th October representing the first wave of arrivals. The local Blackbirds have already cleared many of the berries from the Rowans in our garden but more birds will arrive from Scandinavia shortly looking for berries and windfall apples.

Please let me know of interesting sightings

Tel: 01494 488016 • symonds@speen10.freemove.co.uk



BBC IN SPEEN

Stan Bale

As many of you will know, I was with BBC TV Outside Broadcasts for 33 years. I had an amazing career as a cameraman, covering all aspects of entertainment the BBC offered in its role as a major broadcaster, and it enabled me to view our national, sporting and entertainment worlds from some amazing sites.

I worked on programmes reflecting our national life: state visits, royal weddings, investitures, state funerals, openings of parliament, Her Majesty The Queen's Christmas broadcasts and many other ceremonial occasions. There were sporting events, The Grand National, The Boat Race, cup finals, rugby matches, motor racing and athletics. Also, there were programmes featuring stars of the world of entertainment such as Abba, Michael Jackson, Andy Williams and Boney M.

The Outside Broadcast Department travelled out and about in various vehicles with all the necessary equipment to cover programmes, whether it be Play for Today, Z Cars, Seaside Special, Swap Shop or air displays.



Stan in 1964 at Ascot Racecourse

Recently I was contacted by Brian and Barbara Morgan, who had bought an ex-BBC vehicle and wanted to restore it to its former state when it was in service. They had no BBC connection but wanted to find out about its service history, which was why they contacted me. They were able to bring it to Speen to show me and hear all about its role in outside Broadcasts.

We had a wonderful few hours together and they were fascinated with stories I was able to tell, with the help of John Spaul, an ex-colleague. It all made me wonder if the folk of Speen may be interested in hearing the story of this vehicle.



LACEY GREEN PARISH COUNCIL

Roger Craft & Philip Suter, Speen representatives on Lacey Green Parish Council

Speed Watch

Following concerns from various local residents, Lacey Green Parish Council initiated speed checks to be carried out by PC Turnham of the Thames Valley Police in conjunction with local residents.

We are indebted to Shelley Jennings, who has arranged for local residents to support PC Turnham in carrying out these checks, which have been carried out monthly at various times at two positions in the village since the beginning of the year.

We have just received the following data from PC Turnham, giving the number of vehicles recorded with speeds of 35 mph or above:

Jan	Feb	Mar	Apr	May	Jun	Jul	Aug	Sep
04	12	08	01	00	02	02	08	08

Police letters have been sent to the offending motorists in respect of their speeding.

Lacey Green Parish Council is fully supportive of finding ways to reduce speeding in the villages of Speen and Lacey Green. Any measures will have to be in accordance with recommendations and agreement of Thames Valley Police and the Highways Department of Buckinghamshire County Council.

The Council will consider requests for funding for initiatives in the parish to be included in the budget for the next financial year at the estimates meeting in November and the amount is based on the number of residents that will benefit.

The limited funds that have been included in the budget for a speed calming initiative in this financial year is to be used for matched funding that is required for the Local Area Forum (LAF) application for a mobile Moveable Vehicle Activated Sign (MVAS), costing in the region of £3,000 to £4,000. This device would then be used in Lacey Green as well as Speen, but hopefully in time each village would be able to have its own MVAS.

LACEY GREEN PARISH COUNCIL

Roger Craft & Philip Suter, Speen representatives on Lacey Green Parish Council

Clearance of vegetation from the Pond in Studridge Lane

Lacey Green Parish Council, in association with the Chiltern Society, carried out a major clearance of overgrown vegetation and debris from the pond in Studridge Lane in Speen on Saturday 8th October 2016.

The pond had become rather overgrown during the last couple of years and there was a great deal of concern that water was no longer visible for wildlife.

Fortunately the day was dry up to the last hour or so and 20 volunteers made up of 12 villagers and 8 Chiltern Society volunteers took part, starting at

10am and finishing in the early afternoon. A big thank you to all that took part for what turned out to be an enjoyable and rewarding event, albeit rather tiring. A great achievement, with the removed vegetation (well compacted) filling an 8 cubic yard skip!

Some of the trees on the border of the pond are going to be trimmed back, for which the Parish Council has recently received planning permission.

There is still further work to be carried out to the pond, which hopefully will be less arduous. Details of when another working party is required will be advised in due course after further consultation with the Chiltern Society and local naturalist experts as to the next course of action required.



Playground – Speen Playing Fields

Over the past year Lacey Green Parish Council has been in detailed discussions with the committee of Speen Playing Fields with regard to leasing the playground for a period not exceeding 30 years. The lease is currently in the hands of solicitors and both parties are hopeful that the lease will be signed by the end of the year.

Once signed, this will enable Lacey Green Parish Council over the coming years to invest significant sums in replacing, renewing, adding and maintaining the playground, on a similar basis to the one in Lacey Green, for which the Council has a similar arrangement.



Roger Craft – rogercraft50@gmail.com - 01494 488343
Philip Suter – philip.suter@yahoo.ie - 01494 488540

Heppelthwaite

The Red Van Plumbers



Plumbing and Heating

Boiler Installations and Services

Oil | Biomass | Gas

01628 533 550

www.RedVanPlumbers.co.uk

NOTES FROM THE TOWN HALL

Graham Peart, Councillor for Lacey Green, Speen and the Hampdens



There is a lot of activity within the Town Hall. Work continues on the evaluation and sorting of the several thousand responses by residents to the District Local Plan to enable incorporation into the details of the plan before it is submitted to the Government in March 2017. The consequence of the release of some of the larger sites in Wycombe for housing has required the recruitment of additional staff within the Planning team to handle the planning applications.

Bucks County Council has recently published a lengthy internally produced report that proposes the creation of a new single unitary council in Bucks to replace the existing County Council and four District Councils.

The District Councils of Wycombe, Aylesbury Vale, South Bucks and Chiltern responded by uniting to produce another lengthy independently prepared report. This advocates that a reorganisation into two or three unitary authorities has clear benefits over a single authority. The cost savings achieved by reducing administration costs are less than with a single authority but still significant. However the report argues that the service levels that residents will experience will be superior as the decisions will by definition be more local. Buckinghamshire is a county of two distinct parts, the rural area north of Aylesbury and the more densely populated southern areas and a 'one size fits all' approach will not achieve the necessary improvements in service. Cost saving is one of the key issues but only good value if service levels are maintained or improved.

The key benefit of a unitary authority is that it is a 'one stop' authority that will deal with all local government in contrast with the current arrangement where for example, County deals with roads, transport, adult social care etc. and District handles waste collection, leisure facilities, food licencing and planning matters. After reorganisation, in all of the proposals, each unitary will be responsible for all local government matters.

Your thoughts on this subject do matter and the reports have been published for consultation.

To add to the changes, the Boundary Commission has proposed that the Lacey Green, Speen and the Hampdens ward be moved to the Cheryl Gillan's Amersham and Chesham parliamentary constituency.

The rules for the review state that every constituency recommended from this review should contain no fewer than 71,031 electors and no more than 78,507. This is a significant change to the old rules under which

Parliamentary boundary reviews took place, in which achieving as close to the average number of electors in each constituency was an aim, but there was no statutory fixed permissible range. For example, in England, existing constituencies currently range from 54,232 to 105,448 electors, and this was constructed under the last completed review, which relied on data contained in the electoral registers for 2000.

In this current review, the South East has been allocated 83 constituencies, a reduction of one from the current number. The proposals seek to leave 15 of the existing 84 unchanged.

In Buckinghamshire and Milton Keynes area, one of the existing seven constituencies is proposed to remain unchanged, and this is Beaconsfield. The proposal is to maintain the 7 areas.

The proposed changes advocate the moving of the ward of Lacey Green, Speen and the Hampdens into the Chesham and Amersham constituency along with the Greater Hughenden ward. The wards of Bledlow & Bradenham, and Stokenchurch & Radnage are proposed to move into the Wycombe ward.

This proposal would mean that the Wycombe constituency would have an electorate of 77,998. The Lacey Green, Speen and the Hampdens ward is actually the smallest of the 28 wards within the WDC area with an electorate of just 2,043. Greater Hughenden has 6,486, Bledlow and Bradenham 2,149 and Stokenchurch & Radnage with 4,137.

I give you these numbers as it is really a matter of moving pieces around a chess board to achieve the best result. My thoughts are that we are probably best served where we are or a move to Steve Baker's Wycombe constituency would also be fine. However most residents have no affinity with Amersham and Chesham and it is seen by many as a most unwelcome change. Hazlemere North (3,717) and Hazlemere South (3,439) are much closer to Amersham but are proposed to remain within the Wycombe constituency. Perhaps a logical alternative strategy?

It will happen unless there is a considerable volume of objections. If you have any comments to make to the Boundary Commission, you can go to the website www.bce2018.org.uk to give your views before the deadline on 5th December. There are also oral hearings; the closest one is in Oxford on 24th and 25th October.

Tel: 01494 488327 • graham.peart@wycombe.gov.uk

WHO'S WHO

Bucks County Council - Member for Lacey Green	Carl Etholen	01494 564771
Hughenden Parish Council - Chairman	Roger Beavil	01494 715296
Lacey Green Parish Council - Chairman	Cathryn Davies	01844 342800
Lacey Green Parish Council - Councillor for Speen Ward	Roger Craft	01494 488343
North Dean Good Neighbours	Judith Broadley	01494 563178
North Dean Village Hall - Bookings Secretary/Fete	Jez Wicks	01494 563517
North Dean Village Hall - Chair	Alison Kent	ath@bfarms.co.uk
Pigotts 7 '48' Musical Evenings	Nick Wheeler-Robinson	01494 562167
Riding for the Disabled	Gloria Holmes	01494 488420
Speen Good Neighbours	Pat Richardson	01494 488627
Speen & North Dean Guides	Pauline Hall	01494 488372
Speen & North Dean News - Advertising	Tom Dent	01494 488943
Speen & North Dean News - Chair	Gloria Holmes	01494 488420
Speen & North Dean Toddler Group	Laura Chapman	
Speen Baptist Church	Rev. Heather McIntyre	01494 488067
Speen Fete - Chair	Amanda Dobbs	01494 488887
Speen Helping Hospices - Secretary	Maureen Laing	01494 488397
Speen Marquee	Greg Cook	01494 488939
Speen Playing Fields - Chair	Tony Bobroff	01494 488688
Speen Pre-School Chair	Helen Davies	01494 488847
Speen School - Head	Denise Nayna	01494 488321
Speen School PTA - Chair	Alex Allan	01494 489838
Speen Stores	Alison Templeman	01494 488258
Speen Tennis Court - Secretary	Philippa Lane	01494 488453
Speen Village Hall - Bookings	Sue Taylor	01494 488500
Speen Village Hall - Chairman	Bill Groves	01494 488180
Speen WI - Secretary	Jean Morris	01494 488529
Wycombe District Council - Member for Lacey Green& Hampdens	Cllr. Graham Peart	01494 488327

BEECHDEAN

Farmhouse Dairy Ice Cream

Made from fresh Jersey milk
and rich double cream

Ice Cream for Every Occasion!

- Made Fresh on the farm
- No artificial colourings or additives used
- Suitable for vegetarians
- Gluten free



Beechdean Dairies, Old House Farm, North Dean, High Wycombe, Bucks HP14 4NL
01494 563980 | www.beechdean.co.uk



@BeechdeanGroup



Beechdean Group



Homes of Distinction

If you are looking for a very special property or have one that would benefit from our award winning marketing then we are ready to act on your behalf.

01844 343131
Princes Risborough Office

01494 711677
Hazlemere Office

FINE & COUNTRY
fineandcountry.com™