



Summer 2016
Issue 66

THE SPEEN & NORTH DEAN *News*

www.speenbucks.org.uk



FROM CONCEPT TO REALITY...

simply beautiful gardens

Alchemille has been designing and creating beautiful, innovative, inspirational outdoor spaces since 2004. From urban courtyards to country estates, we can create and care for the simply beautiful garden of your dreams.

DESIGN • PLANTING • AFTER-CARE



01494 488072 • 07909 936718 • info@alchemille.co.uk

www.alchemille.co.uk

Welcome! to the Summer issue of the Speen & North Dean News, and what a great season of celebration it has been so far ... reflected in pictures in the pages that follow.

I think the greatest achievement of bringing the community together was Amanda Dobbs' idea of getting everyone to make scarecrows to decorate the village prior to the Speen Fete. An amazing 74 households took up the challenge and the results were wonderful - every one unique and fabulously creative.

This year was Amanda's last as Fete Chair, but do check out page 27, where she reveals some new and exciting ideas for village events that she's keen to organise.

Please do also see Kate's plea for Speen Festival 2017 help on page 29. So far we will have a play and a Prom, thanks to the Laughtons, but we urgently need people to help organise these, and come up with ideas for other events.

Enjoy the rest of the summer!

Jacqui Laing



Contents

What's On	5
Welcome & Letters	7
Speen Pre-School	9
Speen School & PTA	11
Speen Chapel	13
Horses, Hounds & Heroes	14
Speen Fun Day	16
The Queen's Birthday Tea	18
Speen Fete	20
Scarecrows	22
New Village Events	27
Speen Photo Workshop	28
Speen Festival 2017	29
Speen Garden Group	29
Random Acts of Kindness	31
Notes from the Town Hall	31
Beechdean Down on the Farm	33
Wildlife Watch	35
The Rothschild Story	36
Family Favourite Recipe	39
Who's Who	42

Welcome Packs

The Good Neighbours scheme was set up many years ago and is now run by Pat Richardson in Speen and Judith Broadley in North Dean. One service is to provide new residents with a Welcome Pack of village information, so if you know of anyone new to the area please call:

Pat Richardson (Speen)	01494 488627
Judith Broadley (North Dean)	01494 563178
or email	cooljude@btopenworld.com

Next Edition

Copy for the next edition is **due by 14 October 2016** with a planned publication date of early November. Please send photos saved as jpgs and not embedded in a Word document, together with captions and a consent form (downloaded from the SNDN website www.speenbucks.org.uk) if any of the photos are of children.

Please send to **editor@speenbucks.org.uk**.

EDITOR: Jacqui Laing • ADVERTISING: Tom Dent

COMMITTEE: Gloria Holmes (Chair), Megan Chinn, Nick Wheeler-Robinson, Julie White, Mei Price

DESIGN & PRODUCTION: Jacqui Laing • PRINTED BY: PK Inprint Ltd (01494 452266)

www.speenbucks.org.uk



Your Local Mobility Shop

Independent Living Consultants



**Small aids for everyday
independence!**

**Larger items for
mobility and comfort.**

Call us, or visit our showroom :

01844 27 30 50

10 Woodway, PRINCES RISBOROUGH HP27 0NN

www.IndependentLivingConsultants.co.uk

Nicki Thomas Web Design

**Creating bespoke websites
for a
wide range of businesses**

Visit www.nickithomas.co.uk
to find out more...

Hedgerows, Studridge Lane
Speen, Princes Risborough
HP27 0SA

Tel 01494 488665

Email nickithomas@storecomput.co.uk

Show us your home and we will show you the buyer.

Because it's important to you.

01494 611382

www.hamptons.co.uk



Beyond your expectations

WHAT'S ON

in Speen & North Dean

SEPTEMBER

1st September	WI 'Plants for a Winter Garden'	Speen Village Hall 7.45pm	Jean Morris 488529
4th September	North Dean Fete	N Dean Playing Field, 2.00 pm	Andrew Howard 562775
8th September	Knit & Knatter	Speen Chapel 7.45pm	knitknatter@treenies.com
29th September	Knit & Knatter	Speen Chapel 7.45pm	knitknatter@treenies.com
30th September	Speen Fete Cheque Handover	Speen Village Hall 8pm	Amanda Dobbs 488887

OCTOBER

6th October	WI 'Tales from the Top Table'	Speen Village Hall 7.45pm	Jean Morris 488529
8th October	Martin Hart Quintet Jazz Night	Speen Village Hall	Martin Hart 488528
11th October	Speen vs North Dean Golf	Beaconsfield Golf Club	Charlie Pearson 488483
13th October	Knit & Knatter	Speen Chapel 7.45pm	knitknatter@treenies.com
27th October	Knit & Knatter	Speen Chapel 7.45pm	knitknatter@treenies.com
29th October	Film & Food Night	Speen Village Hall	June Pilkington 488071

NOVEMBER

3rd November	WI Annual meeting and supper	Speen Village Hall 7.45pm	Jean Morris 488529
5th November	Speen Bonfire Night	Speen Playing Field	Tony Bobroff 488688
10th November	Knit & Knatter	Speen Chapel 7.45pm	knitknatter@treenies.com
24th November	Knit & Knatter	Speen Chapel 7.45pm	knitknatter@treenies.com

DECEMBER

1st December	WI 'Swinging London in the 60s'	Speen Village Hall 7.45pm	Jean Morris 488529
3rd December	Christmas Fayre	Speen Village Hall	Margaret Groves 488180
8th December	Knit & Knatter	Speen Chapel 7.45pm	knitknatter@treenies.com
9th December	Speen Christmas Tree Lighting	Speen Playing Field	Tony Bobroff 488688

List of Advertisers

A Cut Above, Alchemille, Allied Healthcare, Beechdean Farmhouse Dairy Ice Cream, Buckmoorend Farm, CG Tree & Garden Services, Coles & Blackwell, Foursquare Land, Fraser Morgan School of Dancing, Hampdens, Heppelthwaites, Hughenden Builders, Independent Living Consultants, JML Training & Consultancy, JNP, John Bishop, John Easterling, Judith A Newenham, KJ Windows and Doors, M R Collins, Martin Hart, MWH Interiors Limited, National Energy Foundation, Nelson Electrical, Nick Higgins, Nicki Thomas Web Design, Paul Newman Ltd, Pilates Physiotherapy, PK InPrint, SB Decorations, Speen Stores, Springline Cars, Universal Care, Village Environmental Services.



A Cut Above

Have you discovered your local salon yet?

A Cut Above is situated in the heart of Speen village with easy parking. A unisex salon with a warm family friendly atmosphere.

Chris Stiles and Cathy Wardle are experienced professionals providing cuts, colour, styling and hair care advice at affordable prices

We are now also offering a beauty service by Lucille of Lulu's Nails & Beauty. Lucille is a CIBTAC-qualified and Champneys-trained beauty therapist.

Salon 01494 488899 • Chris 07789 115 942 • Cathy 07753 858 611 • Lucille 07977 814 373

A Cut Above, Over Speen Stores, Chapel Hill, Speen HP27 0SL

We hope to see you soon!

MANUFACTURERS OF FINE BESPOKE KITCHENS

RESTORATION & REPAINTING OF EXISTING KITCHENS



FITTED AND FREE-STANDING FURNITURE

PAINTED | KITCHENS | NAPHILL

07768 975 323

johneasterling4@gmail.com

exclusive hand-painted kitchens

WELCOME & LETTERS

NEW RESIDENTS

Welcome to Susan Laughton who has moved to Speen

Another member of the lovely Laughton family in Speen - how lucky are we! We are delighted to welcome Susan Laughton - Sam's mum - who has moved into Aquila Lodge in Dairymede.

Welcome to Jeremy & Alice Hamilton from Poole, who have moved to Pigotts Hill

Alice introduced Jeremy to Pigotts music in 1988. She and their three children have all known Pigotts since childhood. They have made music here, cooked and organised often, and the plan is that Jeremy and Alice are to lead the development of the programme here over the next year. We hope that Ben (awaiting A Level results), Annie (reading French and Italian at Oxford) and Peter (a Software Engineer in London) will continue to be active hereabouts.

Nick Wheeler-Robinson

Update on progress at The White House

Letter to their neighbours, from Richard and Gill Biffa

As you will have seen, having complied with the ecological requirements re bats and badgers etc. the old house has been demolished and building work has commenced on the new house and lodge.

Unfortunately but inevitably there is some noise, dust, mud and general disturbance. If you do have any particular gripes please feel free to pop in to see the Site Foreman, Chris Oxley.

As we want to keep the house as energy efficient as possible and to comply with the energy targets, we are installing ground source heating. This will involve a drilling rig and sinking approx 8 boreholes down to a depth of around 200 metres.

We will write again as things progress.

Kind regards, Richard & Gill Biffa

Happy in North Dean

It is just over a year since Melinda and I moved to North Dean from Rickmansworth. In that time we have made many new friends and acquaintances and we would just like to say how delightful and beautiful the North Dean and Speen area is.

As one drives down Warrendene Road from Perks Lane and then turns right at the Harrow Public House, it is like entering a different world, and we feel incredibly privileged to be living in this lovely part of South Buckinghamshire.

Melinda & Richard Pooley
Ranier, North Dean

Dear Editor,

I took this photo at the Speen Fete and circulated it to a few pals with the text "The grass is always greener ..."

Within hours, I was told that the French say "L'herbe est toujours plus verte ailleurs", the Italians say "L'erba del vicino è sempre più verde", the Portuguese say "A grama é sempre mais verde do outro lado" and - my favourite - in Hong Kong they say "The ginger is always hotter in the next village".

In subsequent days the floodgates opened. I've since been told that the same idea - and sometimes the same reference to greener grass - is found in German (neighbour's cherries), Dutch, Japanese, Persian, Indonesian, Tamil (other side of the river) and it is even found in Ovid "The harvest is always richer in another man's field."

Nice to know that there really are some Eternal Verities.

Clive Rainbow



Do you have new neighbours you'd like to say hello to on this page? Maybe a special thank you, a new addition to the family, a child off to university, a wedding or landmark anniversary or birthday to celebrate? If so, we'd love to hear from you.

Please email
**editor@
speenbucks.org.uk**



design · refurbishment · construction



- Interior building work and alterations
- Bathroom design and installation
- Kitchen design and installation
- Full property renovations
- All work covered by comprehensive insurance and full guarantee

t: 01494 488002
m: 07866 738829

mwh | interiors

www.mwhinteriors.co.uk info@mwhinteriors.co.uk
Hayton Cottage, Flowers Bottom Lane, Speen, Princes Risborough, HP27 0PZ



A bespoke management training and coaching company established in 1997, working in the private and public sector.

Recognise and capitalise on your potential

Do you need to give yourself the space to broaden your thinking, further develop your skills, confidence and competence in today's demanding environment?

We offer a coaching service that is confidential, flexible, targeted to meet clear goals and expand your skills base. We provide objective executive coaching that will support your professional, business and personal development.

In-house training

Maximise the level of talent skills and performance in your organisation. We specialise in the design and delivery of practical, interactive and results focused in-house training. Let us help you develop your people.

Check out our website at www.jml-training.com
or call us on **01494 488787** for further information

SPEENPRE-SCHOOL

Helen Davies, Chair

Summer fun

What a busy time the children have at this time of year. We have just finished for the summer holidays and we are exhausted – the parents particularly! This week the children have had their end of term party with a visit from Active Kids providing energetic fun, followed by a wonderful party lunch with an amazing cake made for us by one of our parents (Simply Cakewife).



This term the Pre-schoolchildren were invited to Speen School for a morning of arts, crafts and Musical Mayhem as part of the annual SpeenSchoolFest. They had a fabulous time and we are very grateful to be included in such a wonderful week. Last week we held our sports day; the children had a lot of fun taking part in their races and thoroughly enjoyed cheering on the parents and grandparents who took part in their own races. We even managed to get the staff to race and persuaded staff from Speen School to join in. The Pre-school children love seeing the older children come and watch their sports day and we are thankful to Mrs Nayna and the staff for participating.

Speen Fete is another huge day for us on our calendar and this year it was even more important. The Pre-school was chosen by the fete committee to be the charity supported by the event. We are extremely grateful to the fete committee for their support and to the village of Speen.

Fundraising continues throughout the school year and the summer term is no quieter. Our biggest fundraising event was the Speen Summer Soiree in June. This year the format changed slightly but the fun was as big as ever. The evening saw guests dine on British themed food in a truly vintage themed marquee. The Pre-school enjoyed co-hosting this fantastic event and look forward to continuing in the years to come.

I would like to take this opportunity to thank everyone in Speen and North Dean for your continued support at all our fundraising events. Pre-school relies heavily on the money raised to continue to provide the children with wonderful facilities. We pride ourselves on maintaining such high staff ratios in a unique small setting and so giving the children the best environment to achieve their full potential.

Our Forest School site continues to thrive. It is an amazing educational environment that is going from strength to strength. We will be continuing to run twice per week throughout the next term. The Pre-school would not be able to provide such a unique experience for the children without the support of the playing fields committee and we are very grateful. The Forest School was visited by the RAF High Wycombe Station Commander, who planted a tree on the site of the one we lost at Easter. The children loved showing off their Forest School, and enjoyed toasting their marshmallows.



We were very sad to say goodbye to our children moving onto 'Big School' and wish them well in their new adventures. We are looking forward to welcoming new children in September; the staff are already planning a range of activities to keep the children engaged.

Speen Pre-school is open to children age from 2-5. We still have spaces available in our sessions and any prospective parents can arrange a visit at any time during term time. To obtain a prospectus, please contact Helen Davies on 01494 488847 or email office@speenpreschool.org.uk.

For more information please visit the website.

www.speenpreschool.org.uk

Award winning Design

Extension • Conversion • New Build

Overall Winner

Chilterns Design Awards 2015

Regional Finalist

Local Authority Building
Excellence Awards 2015

SQ4RE

Jeremy Symondson
Foursquare Land Limited
Old Smithy, Great Hampden,
Buckinghamshire HP16 9RF
jem@4squareland.co.uk
tel: 01494 488877
mob: 07789 201616

NEW

Buckmoorend farm shop



HOME REARED MEATS AND LOCAL PRODUCE



On the Chequers Estate, Butlers Cross

info@buckmoorendfarm.co.uk
www.buckmoorendfarm.co.uk



01296 620493 Butlers Cross HP17 0UT



SPEEN STORES

Your useful little shop

Freshly baked bread daily
Sub-Post Office
Fresh Fruit & Vegetables
Free Range Eggs
Homemade Cakes
Handmade Greetings Cards

Please visit the village website
www.speenbucks.org.uk
for opening hours and more information



Newsletters

Leaflets

Programmes

Printers of Speen & North Dean News

Brochures

Folders

DESIGN, ARTWORK
DIGITAL & LITHO PRINT
all under one roof

Labels

8 Wycombe Industrial Mall
West End Street
High Wycombe
Buckinghamshire HP11 2QY

Stationery

T: 01494 452266

F: 01494 452216

E: mail@pkinprint.co.uk

W: www.pkinprint.co.uk

Carbonless

Instructions

CONTACT US NEXT TIME YOU NEED A PRINT QUOTATION
if it's on paper we print it

SPEENSCHOOL & PTA

Clare Morris, PTA Chair

Another school year has come to an end and the long holiday begins. The summer term has been busy and fun-filled for both parents and children alike.

Princes Risborough Upper School continues to host multi-school sports afternoons and this term the children have been fortunate enough to attend three events - tennis skills, athletics and finally a reception children only afternoon. These provide an opportunity for our children to not only have fun, learning new skills, but also helps them to interact with lots of other children. Year 2 children also took part in the Gym and Dance Display in July.

In May the whole school visited Shortenhills Environmental Centre. The children explored habitats within a woodland setting and went on safari. Whilst in June the older Year 1's and 2's visited the Chiltern Open Air Museum to continue their topic of homes and habitats. The final trip of the year was the Worship Trail where the children visited both a mosque and church in High Wycombe. Unfortunately a rather nasty sickness bug resulted in depleted numbers attending.

In June the school invited dads to visit for a celebration of Fathers Day with their mission to make a paper aeroplane to fly far, high and hit a target.

Of course June is also the month of SpeenSchoolFest and the School Ball, this year the Summer Soiree. Chosen before the referendum date was set, the theme of this year's activities was 'Best of British'. Many parents took the lead during the arts festival with activities ranging from celebrating 'being beside the seaside' to stained glass window making, nursery rhymes, traditional tales, cake decorating, soldier making,

Punch & Judy, creating iconic British images and May-pole dancing across Speen School, Speen Pre-school and St John's. Many thanks to all who made the event happen – parents, Kate Laughton and the many helpers from the village and for the continued support of Speen Festival.

On the Saturday evening the transformed marquee now looked like it was hosting a traditional Street Party and almost 100 guests tucked into fish & chips and trifle. Huge thanks to all who made generous pledges and all those

with successful winning bids on our Auction of Promises. This combined with our sponsorship from Vestra Wealth, Argentex and Country Supplies and raffle resulted in over £5,000 being raised.

The following weekend the school hosted its very first Leavers' Campover, with parents and children from the leaving Year 2 class spending an adventurous night under the stars. A campfire, crafts

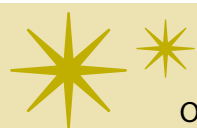
and cycling activities resulted in many delightful memories.

Of course Speen Fete wouldn't be the same without Speen School Country Dancing display and this year the children brought their very own band, with live music from Rev Tony.

Final events of the year included our Sports Afternoon and the Leavers' service, where we wished all our leaving pupils and their families all the best for the future.

On behalf of the school and PTA I would like to thank all those who contribute to school life, through volunteering, attending events or being part of the governing body. We look forward to welcoming new children and their families to the school in September. Happy Holidays.

www.speen-cofe-bucks.sch.uk



GOLDEN CELEBRATIONS



On 20th September at 2.30pm the school will host a tea party to celebrate the 50th Anniversary of the dedication by the Bishop of Oxford, of Speen School on its current site.

We would like to warmly extend an invitation to all past pupils and parents to come and join us for tea.

For catering purposes please email office@speen-cofe.bucks.sch.uk to tell us if you can come.

CG Tree & Garden Services

Tree surgery & felling
Fencing
Hedge cutting, topping & turfing
Woodchips & firewood for sale



Free estimates • qualified staff • fully insured

Tel: 01494 562045
Mob: 07798 896380

BEAUTIFUL, *HANDMADE*
CURTAINS
& CUSHIONS, BLINDS, FABRICS, POLES,
TRACKS
for
ELEGANT, STYLISH HOMES

JUDITH NEWENHAM

FOR PERSONAL SERVICE
AND A
FREE NO OBLIGATION
QUOTE

01494868461
07788718242

JUDITHNEWENHAM@HOTMAIL.CO.UK



• Over 20 years experience

• All interiors and exteriors

• All wall coverings

• Free quotations

SB Professional
Painting & Decorating
Call Ben On:

07973 539495 or 01296 486470

References from completed work are available from Speen and surrounding areas

Buy a brick, be part of the legacy

Our beautiful chapel, built with the bare hands of the community, has now stood overlooking the North Dean valley for more than 250 years. People have come and gone; some remembered with plaques, others with gravestones, but yet more forgotten to the village.

The Restoration project provides an opportunity for you (and your family) to mark your presence in the village for years to come by being part of the time capsule we are building into the new church hall. We launched the time capsule at the fete and had a fantastic response with over 26 bricks being purchased and messages written for future generations to find.



If you would like to be part of this exciting project, please contact Kate Vale at bramble_cottage@hotmail.com. She will arrange to deliver a painted brick ready for an inscription and a numbered certificate of purchase to you, for a donation of £20. Your money will go to support the rebuild which, as you can read below, is nearing commencement. Exciting times!



Project Update - July 2016

It is high time for a comprehensive update but we'll try to keep it as brief as possible:

- Detailed drawings for the building regulations application are being done now and will then go straight into the planning office.
- As a design principle we would rather do less to a high quality standard rather than compromise to do more.
- The builder will produce final prices based on those drawings and we are fairly confident of a total budget of £330k for phases 1 and 2 (re-roofing and refit of hall, new kitchen, toilets etc).
- The builder is on standby to start knocking things down and digging holes in mid to late August.
- We have £190k in the bank, and are owed another £30k from the tax reclaim of gift aid. So, with £220k in the bank we are two-thirds of the way there.
- We are awaiting responses on some grant applications that may pay for some of the difference.
- We have to assume we need to find the rest ourselves so are arranging a loan facility of £100k and assuming we can raise the final £10k over the next couple of months.
- The loan needs to be repaid so we still need to raise £100k to pay it off!
- Some folks have promised future regular giving to repay the loan. This will take 8 years at the moment.
- We'd love to shorten that so please do consider if there's anything you can do, if you haven't given already - either one-off or monthly/regular donations would be most welcome (or both!).
- We could do with some volunteers to come up with and run events (whilst ideas are helpful it is actually giving the time that will make the difference!).
- These events should be both to raise a bit of cash but also to welcome as many local people to be part of this community landmark redevelopment as possible.

So, in summary we are making great headway, need more cash, and would love engagement from everyone in the process. All suggestions and questions are very welcome on any of the above. Please contact the project team:

Anita nita.creech@gmail.com

James james.entwisle@btconnect.com

Graham graham@p3art.co.uk

Jenny lydiajenniferpearce@gmail.com

In the meantime, please pray for all of the above and for a great new addition to the local community and church. And if you are not a believer, feel free to give it a try anyway!



THE HORSE TRUST

Horses, Hounds & Heroes

The Horse Trust is the world's oldest horse charity. Based in the heart of the Chilterns, they specialise in providing respite and retirement for working horses and ponies and a place of sanctuary for horses, ponies and donkeys who have suffered from cruelty or neglect.

Every year they open the gates for their annual open day 'Horses, Hounds and Heroes' - a family fun day, in order to raise money for the over 100 horses, ponies and donkeys that take residency with them. This year performances in the main arena included The Metropolitan Police Activity ride jumping through fire, The Pony Club's crazy mounted games and even an amazing birds of prey display. There was never a chance to be peckish with luxury burgers and hotdogs and even a double decker red bus bar to satisfy thirst. Entertaining the kids was never an issue as there were sweet stalls, ice cream, ferret racing, face painting and even a chance to meet tiny residents such as miniature Shetland pony Hamish. Rescue horses Star and Rocky were giving families pony and trap rides and there

was a chance to enter your pooch into the dog show kindly run by Stokenchurch Dog Rescue.

The finale and most popular spectacle to this magical event is the horse parade. It's a chance to meet a selection of new and old residents as they are led in parade, accompanied by commentary on their stories by CEO Jeanette Allen. She said "As a relatively small Equine Charity, fundraising events like this are hugely important to us. Events like this are only successful because of the public's generous support".

The sun was shining, and the event made over £16,000 thanks to the kindness of the public. The funds raised on the day will help care for over 100 horses, ponies and donkeys living at the Home of Rest in Buckinghamshire. They are open to the public every Thursday to Sunday from 2-4pm. If you want to find out what they get up to on daily basis, find them on Facebook or go online and visit the website www.horsetrust.org.uk.





SPEENFUNDAY

A very big thank you once again to the Fun Day team for putting on another excellent day of fun and games. It really is a wonderful event for bringing the community together to meet their neighbours and share in the laughter, along with a bit of healthy competitiveness - and what a great turn out it was this year.

Congratulations to this year's champions, the Green Team, and Holly Bowen for winning the Kiddy Kurling.

The BBQ and Bar raised over £700, which will help with running our two village owned Playing Fields.





Picture by Peter Symonds



Picture by Peter Symonds



Picture by Peter Symonds



THE QUEEN'S 90TH BIRTHDAY CELEBRATION

John Holmes

As the Fun Day games were ending, the village started celebrating the Queen's Birthday in the village marquee. About 150 villagers and families and friends took part in a bring-and-share Tea Party. The Village Hall committee offered delicious home-made cake and tea for those who did not bring (or couldn't resist).

Kate and Sam Laughton and Vicki Barret provided appropriate loyal music (including our National Anthem), supported by Johnny Thirkell with a trumpet solo and the Brooks-Ushers on accordions. The Best Decorated Table prize was won by Grubbins Lane; the Best Royal look-alike by Maureen Laing and the Best Child's Birthday Card by Beth Downing (which has been sent to Buckingham Palace).

A big thankyou to all who helped and to all who supported this very enjoyable village social event, which also raised £500 for the maintenance of the Village Hall from cake sales and the Raffle.





This picture by Peter Symonds

SPREENFETE

Amanda Dobbs

Firstly I would like to say a huge scare-tastic thank you to all you crazy talented families that took part in this year's scarecrow competition. The village was awash with all manner of weird and wonderful designs, which proved very difficult for the committee and the general public to choose a winner, but choose they did. The 1st prize of £50 went to Jane Calvert for her homage to Absolutely Fabulous, the 2nd prize of £25 went to Cathy Buxton for her highly amusing Lawn Mower Man, the 3rd prize of £15 went to Ali at Speen Stores for her rendition of Open All Hours and the £10 Sponsor's Choice went to Miss Barrett for her very clever and well thought-out political satire statement. Well done to all of you, and we hope you enjoy your well deserved prizes. The prize money was very kindly sponsored by Michael at Tudor Travel. So get plotting and planning and watch this space for next year's chosen theme. It could be you winning, you never know!

As for the fete itself, a huge thank you to the ladies from the WI for once again providing delicious refreshments and a place to rest, to the arts and crafts for providing a wonderful insight into village traditions once practiced by every household but now sadly all but gone, to the bric-a-brac donated by you all that has now thankfully been

re-distributed and is probably sitting in your neighbours' living room, to the green-fingered growers who have our gardens bedecked with the fantastic plants purchased from the fete, to the Hampden Arms for providing us with a BBQ and a tipple or two for medicinal purposes, to the Guides, the Scouts and the village helpers for their time and commitment on the day, to Appreciating Animals who had the Baa factor, the birds of prey who had the tallon't factor, the bouncy castle that had the wee factor, the tractor rides that had the speed factor, the side shows that had the competitive factor, the dancers that had the Wow factor and the wonderful music that had the smooth factor. So all in all I think this year's fete had the X factor.

This year the chosen charity is the Speen Pre School and the profit from the fete will be divided between the charity and the local organisations that contribute to the fete with commitment and time. The cheque handovers will take place on 30th September at 8pm in the Speen Village Hall - all welcome. Refreshments will be supplied.

If your organisation would like to be considered for next year's charity share you will need to apply to the committee by December 31st 2016.



Photos by Peter Symonds and Michael Dobbs



Congratulations to the Winners of the Children's competitions:

Fancy Dress (Scarecrow): Owen Floyd
Colouring Competition: Helena Winson, Ella Price
 & Rose Green
Miniature Garden: Saranna Floyd
Scarecrow Poem: Holly Forkgen
Six Cup Cakes: Olivia Brooks-Usher



Finally thank you to all my team and to the village for making this year's fete, and my last, a fabulous one. What a way to go out after 7 years as Chair and 2 as a committee member. I've had so much fun along the way, but now it's time to bring in new blood with new ideas so that we can provide the type of fete that keeps everyone coming back for more. I will be marking my retirement at the cheque handout in the village hall on 30th September at 8pm as a thank you, with refreshments provided and hopefully the introduction of my replacement, so see you all then.



SCARECROWTASTIC

Your wonderful creations



PILATES PHYSIOTHERAPIST

Diana Cliffe MCSP HCPC

- Pilates for the relief of Back Pain
- Individual sessions and local small classes
- Rehabilitation after Joint Replacement

Tel: 01494 562899 (North Dean)
Mob: 07767 096609
Email: physiodiana@gmail.com



*The Martin Hart Quintet
presents*

JAZZ EVENING

Saturday 8th October

"JAZZ AT THE PHILHARMONIC"

The story of the Jazz Entrepreneur NORMAN GRANZ

--including the music of :-
Stan Getz - Milt Jackson - MJQ- Oscar Peterson - etc

Featuring; Mike Wills - Saxes
Alan Graham - Vibraphone
Ken McCarthy - Piano

SPEEN VILLAGE HALL ---curtain up 8pm
Tickets from the Shop or Martin Hart (488528) £12
Bring your own refreshments
: supporting cancer research.

Nick Higgins
Forestry & Fencing
Contractor

m. 07768 383418
t. 01494 488835

45 Great Hampden
Bucks
HP16 9RJ



Seasoned logs
available

FRASER-MORGAN SCHOOL OF DANCING

Naphill Village Hall

BALLET (R.A.D.) : Age 3+

MODERN / JAZZ (I.S.T.D.) : Age 4+

FOR MORE INFORMATION, PLEASE CALL

ELAINE TUCKER ON :

01494 816539 or 07974 121081

ROYAL ACADEMY OF
DANCE



**SPRINGLINE
CARS** PRIVATE HIRE

- Airport Transfers
- Events & Occasions
- London Trips
- Personal Service
- Owner Driver
- Local Knowledge

RISBOROUGH

01844 27 44 74

Know the voice, know your driver



SCARECROWTASTIC

continued



SPECIAL THANKS TO AMANDA

Extra special thanks go to Amanda Dobbs for all her incredible hard work and dedication as Fete Chair for the past 7 years.

Without her and her wonderful team making the magic happen, we wouldn't have the lovely Fete that we do today.

We do hope that we get some new volunteers to join the team with fresh new ideas for next year. Please do get in touch if you are interested.

And as for Amanda ... she won't be far away ... she wants to put her talents towards organising new village events ... *See page 27 ...*

CENTRAL HEATING SYSTEM TYPES

There are many different types of central heating systems such as gas, oil, biomass, LPG and electric to name but a few. Getting the correct central heating system for your home will ensure you are not wasting money on high energy bills, and in some cases you could be reducing your carbon footprint and even be receiving cash incentives for using renewable energy products.

Getting the right solution will also depend on a number of factors, which could eliminate some of those options. For example, if your home is not on the national grid then you will not have a supply of gas, which eliminates the option of a conventional gas boiler system. However, there are a good range of options if you are not on the national grid, such as biomass, oil, LPG, ground source heat pumps and air source heat pumps. Below is an overview of some of the different type of systems.

NATURAL GAS: A gas central heating system works by gas heating water within a gas boiler. The hot water is then channelled through radiators and provides hot water through the taps.

OIL: An oil central heating system works in a similar way to that of a natural gas system in that central heating is provided through radiators and hot water through the taps in your home. The difference is that you have an oil fired boiler to heat the water.

BIOMASS HEATING: Biomass provides all your heating and hot water, with a clean, sustainable fuel eliminating the requirement for fossil fuel. Biomass boilers burn wood pellets, from sustainable sources and create an environmentally friendly carbon cycle.

AIR SOURCE HEAT PUMP: An air source heat pump (ASHP) is an electrical device that extracts heat from one place and transfers it to another. An air source heat pump uses a refrigerant system involving a compressor and a condenser to absorb heat and release it.

ELECTRIC: An electric heater is an electrical device that converts electric current to heat. Appliances include space heating, electric fire places, under floor heating systems and more.

LPG: LPG stands for Liquefied Petroleum Gas (or Liquid Petroleum Gas). It is designed as a safe to use alternative to regular gas central heating, oil-burning or biomass boilers. LPG can be stored in cylinders or tanks on any property large enough to house it.

Once you have decided on the source of energy, the next step is deciding on what products to consider and how to have it installed into your home to get the most out of it.

Heppelthwaite the Red Van Plumbers are here to help every step on the way, from design and installation to maintenance and servicing. Check out the full article including the pros and cons at www.redvanplumbers.co/central-heating-system-types

If you would like some advice or a free of charge estimate then please get contact us:

customer@heppelthwaite.co.uk
01628 533 550

Heppelthwaite 
The Red Van Plumbers

Which?
Trusted trader

2015 Winners
 Plumbing - Heating - Renewable Energy



01628 533 550

www.RedVanPlumbers.co.uk

Heppelthwaite the Red Van Plumbers are winners of the 2015 face of Which Trusted Trader competition. A family run plumbing and heating company covering Speen and surrounding areas.
Specialists in Gas, Oil and Biomass



NEW VILLAGE EVENTS

Amanda Dobbs



As part of a drive to keep the community entertained, meet newcomers to the village and catch up with old friends, I would like to arrange some new community events in the village hall and round the village.

I have a few ideas, but I would love to hear what you would like to attend/see/ be involved with, so below is a form that has a few suggestions and an 'I'm interested in ...' section for any other suggestions.

If you like the sound of any of the below, or have any ideas for something new, please do complete the form and drop it in my letterbox, email it to me or leave it in the shop, and if enough people are interested I will arrange the event.

NAME _____	
EVENT	Yes /No
Wine Tasting	<input type="checkbox"/>
Film Night - adult /child/ladies only/men only/family (specify)	<input type="checkbox"/>
Ladies Pamper Evening	<input type="checkbox"/>
Who Dunnit Night	<input type="checkbox"/>
Treasure Hunt with buffet	<input type="checkbox"/>
Photographic/Art Talk	<input type="checkbox"/>
Art Gallery Evening with Wine and Cheese	<input type="checkbox"/>
Theme Party Night	<input type="checkbox"/>
Quiz Night	<input type="checkbox"/>
Music Evening	<input type="checkbox"/>
Picnic in the Park	<input type="checkbox"/>
Fun Run	<input type="checkbox"/>
Christmas Cocktail & Buffet Night	<input type="checkbox"/>
Summer Cricket Match	<input type="checkbox"/>
I'm also interested in: _____	

SPEENPHOTO WORKSHOP

Martin Hart

The Speen Photo Workshop came about following a suggestion from Kate Laughton. Kate is one of those intuitive people with a mercurial awareness (if you are talking to her, good ideas just seem to appear). I liked the idea, and having a passion for photography and the enthusiasm, we formed a group of like-minded villagers in June 2009.

The objective was simple. To think of good photographic projects. Simple ideas - no competitions, no Photoshop, no 'who's got the best camera', but simply what makes a good image and why, how to get a good exposure and why, and what is composition? All these questions then lead to more complex and esoteric thinking about why we take and create pictures.

Friends of the original group became interested and we have now been joined by a number of out-of-towners from Maidenhead, Chalfont St Peter and Naphill. The projects will vary from action to a Panto dress rehearsal or street photography to portraiture. Each member has their own favorite subject, but the discipline of a project is that you are pushed out of your comfort zone and into areas that you may not regularly approach or even think about.

To follow are three examples of our projects:

We visited an Agri-power yard, full of agricultural building equipment, large and small. The subject was 'Abstraction', that is a picture that has no reference within the frame to indicate the environment or what the 'object' is. This was a subject that was quite new to most of the photographers, but the results were remarkable and strangely exciting. Wynne Davis's image here of a blue polythene duct is pure abstraction, with the frame and exposure being beautifully handled.



Candid photography often takes photographers out of their comfort zone, taking pictures in public. Chris Dunnington's 'Fun Day' picture here is really quite a masterpiece. It has no real composition or any intended center of interest, and yet it gets straight to what the Fun Day really means. How was that done? For Chris I believe it's intuitive but considered. Characters half out of the frame, legs have been cut off, and there are empty meaningless spaces. But why is it such a successful image? Because you can actually feel the excitement and activity. It is a true 'moment in time'.



The third picture is by Geoff Smith, taken in Amersham old town on a 'contemporary' shoot. The idea to get down to the pavement and take a 'Dog's Eye View' was a good one, but the masterstroke was taking the faces out of frame and including more paving than was necessary. A real original 'Dog's Eye View' and a contemporary piece of work.

We meet to complete a project and then meet again a week later to view and analyze our results. The variation of images created of the same subject never fails to surprise and I guess it's this that remains so intriguing and fascinating.

martinnhart@gmail.com



What qualifies you, dear residents of Speen, to put on the Speen Festival 2017?

This summer Pigotts music camp is celebrating 50 years in North Dean. As I write, rather late at night from music camp, where, in a previous location, my mother-in-law Sue (now a resident of Speen!) met her future husband, I am able to reflect on how the 'arts' and the celebration of these in every variety, bring communities and people together. This seems to have driven my working and family life.

Next year I will be producing another community opera at Garsington Opera in the incredible opera house on the Wormsley estate near Stokenchurch, involving over 200 performers from the local area. Life-long friendships will be formed, challenges overcome, confidence and skills built in the process.

The Speen Festival is a perfect little example of such an endeavour, run entirely by volunteers and community participation where local children (and, indeed, some thespian adults) relish the chance to put on a show to their friends and family just round the corner from their home. Over the years others have pitched in to run incredible events reflecting their own personal enthusiasms.

We don't want this to disappear, and are putting out a plea to you all to consider how you might be able to help keep the Festival on the road for another year, in whatever format appropriate. The infrastructure is there to roll, but we need a few people with a bit of time and enthusiasm to step up to ensure it happens.

Our Laughton slimline suggestion as a starter is a show on the 7th, 8th and 9th September 2017 – (exciting details to be announced in the next issue of SNDN!) and another Prom in the Playing Fields. We need help to make these happen. If you are that person willing to give some time to get this ball rolling, please don't sit back - give me a ring now!

One person is all it needs to get started.

Kate Laughton

07765 288210 or email spenstrings@gmail.com

SPEEN GARDEN GROUP

In March we started our year with a lively and informative talk, 'Bordering on Insanity', by Timothy Walker, followed by a social evening with wine and nibbles, which was very well attended.

Our programme of visits started in May with a trip to Lord Carrington's garden near Bledlow - sadly it poured with rain but we dried off and finished the afternoon with tea and cakes at Daphne Westray's house to cheer us up!



One lovely sunny day in June we had an interesting trip to Chalgrove; firstly to medieval Chalgrove Manor, to look around their delightful gardens, and then across the road to Mill Barn (see photo), where we had delicious cream teas on the lawn after touring their garden.



In July, the group arranged a coach trip to the National Herb Centre, which was unusual and very interesting. After a quick lunch in their excellent bistro, we then went on to Broughton Grange, near Banbury, for an excellent guided tour of the beautiful gardens, finishing once again with tea and cake on the Tea Lawn!

All our visits were extremely well supported and thoroughly enjoyed by all who took part; we look forward to a similarly exciting and varied programme in 2017!

Reliable, Friendly Service
Taps, Leaks, Drains, Loos

Any Local Plumbing

Restoration to Renewables

Central Heating & Controls

Gas, LPG, Heat Pump & Electric

Registered for Gas and Electrics

Based in Upper North Dean

Paul's Plumbing
07786 175123

ELECSA
Part of the ECA Group

**Part P
Approved Contractor**

www.elecsa.co.uk

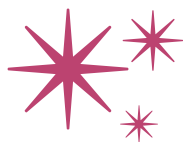
Local to Naphill, Walters Ash
Lacey Green, Speen, Hampden
Hughenden, North Dean



199757

Electrics - Bathroom, Heating, Etc.
Registered for Self Certification

Paul Newman Ltd. 01494 565573



RANDOM *Acts of Kindness*



The committee of the Speen & North Dean News think that random acts of kindness matter, and we would like to offer a small monthly prize for just that.

What is a Random Act of Kindness? When someone, unasked, does something, possibly unexpected, to help, cheer or assist someone else - generally someone outside of their own family or circle of close friends. Doing the family washing up (even unasked) doesn't really qualify, but realising a particular need of a neighbour and doing something about it (whilst expecting nothing more than thanks in return) is what we are talking about.

So if a random act of kindness is done to you - or you hear of something someone has done - please write a brief account of what happened (postcard size). Give it into the Village Shop (thank you) and each month we will select a well-deserved recipient to be presented with a small prize.

We are delighted to award our first Random Acts of Kindness accolade to a lovely lady in Abbotswood who, every Friday, bakes two baskets of cookies or brownies and leaves one on the doorstep of a family who suffered a very sad loss two years ago, and one she delivers to Ali, Bob and Connie in the shop - a lovely gesture that puts a smile on their faces every Friday and they are all very touched by her kindness.

NOTES FROM THE TOWN HALL

Graham Peart, Councillor for Lacey Green, Speen and the Hampdens

The draft Wycombe District Local Plan has been released and some of the consultation events have already taken place. Full details are on the WDC website including the policies, maps and dates of future consultations. Closing date for comments to be considered for inclusion in the plan is 8th August. Comments received after that date will be attached to the documentation that will be submitted to the Government inspector.

Princes Risborough has its own detailed Town Plan that was published earlier this year and it will be the area within the District with the largest expansion with around an additional 2,500 houses nearly doubling its size. A new road will also be constructed for access to the new housing and workplace sites.

There are three other local sites that deserve mention; Molins, West Yard Saunderton and Clappins Lane, Walters Ash. The developers' appeal for the Molins site application has been listed for September this year. WDC has been minded to refuse this application, however the Inspector will decide. In a similar situation, an application for nearly 200 houses in Longwick was recently won on appeal. The Government is determined to ensure that sufficient land for housing is released to meet the current and predicted needs of a significantly rising population. Until the Local Plan, which clearly sets out where development will be permitted to meet the new build targets, is approved by the Government inspector, it is proving to be a difficult task



to defend appeals for such applications. There is also a necessity to provide sufficient land for new workplace development too.

The method of calculation laid down to assess housing needs is complex, taking past history, where people work, projected population increases etc. until the year 2033. From this a figure is extracted to give the number of new houses that are required to be completed each year. For the Wycombe District this number is around 750 per annum against a recent build rate of around 250. Of the total number of new homes required of around 15,500, it is anticipated that just over 10,000 will be within our District. Aylesbury Vale has agreed to take about 5,500 of our requirements along with some more from the South Bucks, Chiltern and Milton Keynes Districts so that over 30,000 new homes will be built in North Bucks - the size of a small town.

For clarity, should our plan not be accepted by the Inspector, the Government could appoint their own team to complete it. In addition any accepted plan that is not fulfilled carries the risk of the Government putting a new team in place, taking over the Planning responsibility. This will not happen as your Planning team have produced a well thought out draft plan and they are eager to hear your comments, especially if you have any ideas that will improve it. So now is the time to have your say.

Tel: 01494 488327 • graham.peart@wycombe.gov.uk

ALLIED HEALTHCARE

As a population we are getting older and many of us will be faced with finding nursing or personal care for an elderly relative or planning our own future care if we become incapacitated. Bucks, residents are increasingly making a choice, where possible, of living in their own homes for as long as possible and the local branch of Allied Healthcare is aiming to make this option easier.

The local branch of Allied Healthcare has been operating for over 27 years, based just outside of High Wycombe, has a proven track record of providing domiciliary care in the community.

Increasingly there are fewer hospital beds and long term care homes that are accessible to those needing help, support and care, and most people, if given the choice, would prefer to be treated at home with their own possessions around them. We can offer a wide variety of Care calls from 15 minute pop-in call, once a day to multiple calls or indeed a full time Live In Care.

The offices of Allied Healthcare at High Wycombe are able to help with assessing your needs and advising on all aspects of your care. Before care starts you would be visited by our assessor to ensure that a comprehensive care plan was written and tailor made to suit the needs of the client. This can be for a basic care package to a more specialized and complex packages in the case of a serious illness. We will help you to consider whether you need a fulltime carer, perhaps a special bed or other equipment, or maybe additional carers at certain times of the day to help with lifting or turning. If needed you would have the advice of the 'In House' Trainer to advise on specialist Moving and Handling issues. Allied is willing to go the extra mile to provide the highest standards of care. They try to ensure clients build a relationship with a small team of carers rather than having a constantly changing set of faces. They recommend the use of a Keysafe which ensures a carer, can always gain access to a client's house to provide the care and raise the alarm if needed.

All of the Care workers are trained to the highest standard as required by our regulators, CQC and our stringent internal audit team. Many of our workers have training and expertise in specialist areas but if we needed to we would provide training to meet a specific need of a client.

If you would like more information about Allied and the services we offer then call 01494 488040, and we can meet with you for a no obligation visit or provide you with details and costings of our services.

Work for Allied Healthcare

We always have a need for additional employees to support the services we offer. If you are interested or know of a friend who is interested in joining us as an employee we offer an attractive package. We provide care across the High Wycombe and surrounding areas.

Care & support in the comfort of your own home

Do you or a relative require care or support to live your life the way you choose? If so, Allied Healthcare can help. We have been offering an excellent dependable service in the Buckinghamshire area for over 27 years.

SELF DIRECTED SUPPORT & PRIVATE CLIENTS WELCOME

Full assessments carried out before care commences. All our staff have extensive training and have enhanced CRB checks. We also offer call monitoring.

The range of services we offer

- Visits (1/4, 1/2, 3/4, HOUR)
- Live in/24HR care
- Holiday cover
- Waking nights/sitting
- Assisted bathing
- Light household duties & shopping



All about you

**For more information or assistance please call
01494 488040 / 01494 488141
Email: highwycombe@alliedhealthcare.com**

If you are interested in becoming a Carer or working with Allied Healthcare then please call the numbers above for more information and an application pack. Allied Healthcare is an equal opportunities employer and is regulated by the CQC. Allied Healthcare is committed to safeguarding and promoting the welfare of children, adults and young people and expects all staff and volunteers to share this commitment.



BEECHDEAN DOWN ON THE FARM

Gill Kent

The late spring and plenty of rain has eventually produced bumper crops of grass; the cereals look good and promise high yields, so you would imagine that farmers in the Chilterns are happy. They would be, were it not for problems created by politicians who know so little about agriculture.

From the dairy farmers' point of view, apart from the milk income being below the cost of production, there is the worrying factor of cattle testing positive for TB in our area. The current tests are notoriously inaccurate and as far as I know none of these cattle showed any signs of the disease when they were slaughtered. The farms have been 'shut up' and are not allowed to move any animals. The Ministry are not interested in finding out if any of the badgers are infected, so this situation could continue indefinitely. The disease appears to be spreading relentlessly from the west up the M4 corridor. Humans can be vaccinated against TB but Ministry vets have been trying for years to produce a cattle vaccine, without success.

From the arable farmers' point of view (and many gardeners also) the controversy over the use of 'round up' continues. It is the only weed killer now available which is effective on black grass, a very pernicious weed which plagues cereal growers. The EU are allowing its use only temporarily even though there is no positive evidence that it is harmful.

All farmers are anxious about the future of support payments from our Brexit government. As I have written before, just over half of working farmers rely on these payments if they are to make any profit. Those on the good alluvial soils will be able to survive without support, but we in the Chilterns will not. If nothing changes what will the Chilterns look like in twenty years? You must have noticed that there are already far fewer grazing animals to be seen in the landscape; this trend is continuing, so that the chances of the present mixture of arable and green pasture fields surmounted with beech trees on the steep slopes remaining, is slim indeed.



Hughenden Builders

Established 22 years

All Building Works Undertaken

- Extensions.
- Alterations.
- Loft Conversions.
- Roofing – all types.
- Drives, Block paving, Tarmac etc.
- Patios, Walls, Garden landscaping.
- Plumbing, Plastering, Carpentry.

Planning Service. Clear & Concise Plans

Single Storey £150.00

Two Storey £300.00

(plus council fees)

Free detailed estimate with drawing.
Planning fees returned if tender accepted.

171 Main Road
Naphill

Tel: 01494 562937
01494 438057

JOHN BISHOP

Est. 1972

GARDEN MACHINERY

Sales & Service



HONDA
LAWN & GARDEN



Machine Hire

Scarifiers, Cultivators, Strimmers, Mowers
Hedge Trimmers

Blade/Chainsaw Sharpening & shear grinding.

We also stock a wide range of parts for various products.

Free Collection & Delivery



Tel No. **01494 563513**

Mob. **07917 106004**

1 Margaret Cottages, Northdean, High Wycombe, Bucks, HP14 4NH

Nelson Electrical Services

**Fully Insured
NAPIT Registered
Local Electrician**



No job too small
Free quotes given
No call out charge



Reliable and local service

www.nelson-electrical-services.co.uk

Contact **Michael**
07908 644058

M. R. COLLINS

GARDEN CONSTRUCTION

Est 1979

Driveway, Paving, Brickwork, Fencing
Groundworks, Excavations, Operated
digger hire.

We specialise in Block paving and all
types of slab laying Indian stone and
concrete offering a start to finish service
inclusive of excavations muck away,
supply and fix.

For estimate Phone: 01844 346360
Mobile: 07774 256732

WILDLIFEWATCH

Peter Symonds

Summer 2016

The highlight of my previous report was the wryneck seen by David and Mandy How. Evidently the bird remained in Speen for a few days. I mentioned it to George Butler and three days after the first sighting it turned up just six feet from his kitchen window in Hampden Road, searching for ants along his footpath. However despite some of the best birdwatchers in the county descending on the village it was not seen again after 27th April and this remains the only proven record for Bucks for 2016!

We are now nearing the end of the breeding season but as I write this article a fourth brood of 7 mallard ducklings has appeared in our back garden. My first brood of 11 flew some weeks ago whilst the remaining 5 of 9 in the second brood are testing their wings. A third brood of 8 that nested by our neighbours' front door disappeared off quickly but we now have the fourth brood, which will hopefully stay in the safety of the garden. I am aware that numerous other ducks have nested around the village and a mandarin duck has even visited one large garden. Moorhens nested and hatched young on the pond in Water Lane. Seed put out for the ducks in our own garden attracted up to 4 stock doves plus 8 jackdaws including 3 juveniles. Meanwhile Debbie O'Brien reports three busy house martins' nests on their house in Woodview Drive. George Butler and Ashley Cooper both report numerous siskins on their feeders during the summer months. These winter visitors now regularly stay south and breed in Bucks, which is a relatively new change. Elsewhere tawny owls have bred on the north side of the village and a pair of ravens have ventured down to scavenge in one large garden.

Tawny owls that have previously roosted in a box that I put up seem to have moved elsewhere. The box seems to have been taken over by either glis glis or squirrels. Bizarrely one of each species recently seemed to emerge from the box as I passed by.

On 5th June I recorded my first grass snake of the year at my garden pond. This was a young one suggesting breeding has taken place in the area again. However the best report of the period was from Julian and Kathy Buxton who found a slow-worm on Coleheath Bottom that had been sunbathing on the warm track. This was the first live one I had seen here having previously found a dead one on the same track many years ago. The Buxtons report that they have seen several over the years. Whilst the slow worms look and move like snakes they are in fact members of the lizard family, albeit without legs.

My own best find were a pair of very wobbly roe deer fawns on 14th May. This date is earlier than I have ever seen them before suggesting they may have only been a few hours old. Subsequently I have seen three fawns with a single female. These animals are vulnerable to disturbance and care is needed with dogs. If a female roe deer stands its ground at this time of year rather than fleeing it is highly likely that fawns are hidden nearby. Meanwhile Sooty, the local black rabbit continues to survive around Abbotswood and Woodview Drive.

Please let me know of any interesting sightings.

Tel: 01494 488016 • symonds@speen10.freeserve.co.uk



THE ROTHSCHILD STORY

Carol Hardy

Part 1: From Ghetto to Greatness!

Many of us who were children in the 1950s and 60s may recall the response of parents to a request – modest by today's standards – for a particular Christmas or birthday gift: "Do you think my name is Rothschild?". Though I concluded that Rothschild must signify wealth, I knew nothing about the family until, almost 10 years ago, as retirement approached, I fulfilled a long-held ambition and became a National Trust volunteer at Waddesdon Manor.

As well as learning about the building of the Manor; its collections of porcelain, textiles, furniture and paintings; and the man whose vision this French Renaissance style mansion was, Ferdinand de Rothschild, I was drawn to find out more about the famous family into which he was born and its progress, in less than a century, from oppressed merchants in the C18th Frankfurt ghetto to members of Europe's wealthiest and most powerful banking dynasty.

The family's name came from the house of a C16th ancestor who lived at The House of the Red Shield (Zum roten Schild). Jews had established businesses in Frankfurt from the C11th where they were better treated than in many other European cities. Living in the oldest part of town, they acted as money changers to those who visited the bi-annual fairs; financed loans to local merchants, craftsmen and farmers; and dealt in a variety of imported goods. However, success led to violent jealousy in their non-Jewish neighbours, resulting in pogroms in the C13th and C14th in which many of Frankfurt's Jews were beaten or burnt to death as their houses were set on fire. Such events continued for many years, demonstrating that the activities of Germany's National Socialists and events such as Kristallnacht in the 1930s were not a new phenomenon. It is worth remembering that Edward I expelled all Jews from England in 1290 – the year of a massacre of Jews in York.

In the C15th, a set of special regulations were imposed by the Holy Roman Emperor Frederick III (1415-93) defining restrictions on Jewish inhabitants: rigid tax laws; a humiliating oath of loyalty; and a debt amnesty for Christian debtors. Stringent dress rules were applied; the range of occupations severely restricted, likewise access to all public spaces; Jews were forbidden from owning land or farming; and Jewish marriages were limited to 12 per year – with the

aim of limiting the growth of the Jewish community. Anti-Semitic slogans were much in evidence; public abuse was commonplace; and, in the presence of Christians, Jews were required to remove hats, stand with backs to the nearest wall and bow.

Living under the constant threat of further arbitrary legislation, their worst fears were realised when, in 1460, the Frankfurt city council resolved to segregate Jewish inhabitants in a ghetto, confiscating their houses in the old quarter and demolishing their synagogue. Henceforward they were required to live in one narrow lane, the Judengasse (Jew Street), a gated area completely surrounded by high walls, intended for some 100 inhabitants, who were locked in at night and on Sundays and Christian holidays.



Mayer Amschel Rothschild's Five Sons

By the C18th, with expansion forbidden, conditions had become appallingly overcrowded and insanitary for the population of over 3000 inhabitants who had added upper storeys to the original dwellings so they almost touched across the lane, blocking out sunlight.

In the 1760s, Mayer Amschel Rothschild (1744-1812), the founder of the banking firm, established his business in the Frankfurt ghetto, trading in coins, antiques and textiles. His dealership in coins brought him into contact with William of Hanau, the Landgrave (Crown Prince) of the neighbouring province of Hesse. Having established

THE ROTHSCHILD STORY

continued

a small banking business, by 1769 he was William's Court Agent – the equivalent of 'By Appointment' status today – and when William went into exile when Napoleon invaded, he entrusted some of his business affairs to Mayer Amschel who was by then living in the Green Shield house, a property which had secret cellars, used for the storage of documents and gold, necessary for Jewish enterprises which could be raided at any time by the city authorities.

Mayer's marriage to Gutle Schnapper produced 19 children, 10 of whom survived to adulthood. Five of these were boys who shared a tiny attic room in the house which served as both home and business premises and who quickly learned the skills which would enable them to establish the Rothschild banking business across Europe.

At the age of 21, with no command of the English language and no support, Nathan Mayer Rothschild first set up a business in Manchester, dealing in much admired English textiles which he exported to Germany. In 1809 he moved to London, taking premises in St Swithin's Lane – to this day the home of the bank which bears his name – where he developed banking activities, dealing in bills of exchange and arranging foreign loans. Aided by an amazing communications system and intelligence network, he and his brothers were able to come to the aid of Wellington's force in Spain through their ability to supply him with gold to provision the army.

Nathan's success provided a model for his brothers: whilst the eldest, Amschel remained in Frankfurt to head up an increasingly influential operation, James established a banking house in Paris; Salomon settled in Vienna where the family were already active in Imperial finance; and Carl set up business in Naples. They became business partners bound by agreements designed to keep their capital intact. As a reward for their support of the Austrian Emperor during the Napoleonic Wars, they were ennobled in 1816 and, in 1822, made hereditary barons and given their own coat of arms which included a fist holding 5 arrows, representing

the 5 sons and their unity, adopting the motto *Concordia, Integritas, Industria* (harmony, integrity, hard work).

For more than a century from 1818, raising funds for governments through bond issues formed the core of Rothschild business. In France and Austria, they built and financed networks of railways as well as investing in heavy engineering; and all had interests in the mining of precious metals. They backed the Exploration Company, seeking out mineral sources throughout the world; provided funding for the creation of De Beers in 1887; and were at the forefront

of developing oil fields in Baku and Russia. In 1875, the London bank advanced to Disraeli an unsecured loan of £4M with which to purchase shares in the Suez Canal.

During the second half of the C19th, English and French Rothschilds ventured into investment in Bordeaux wines, purchasing the Mouton and Lafite vineyards: as a family with a reputation for extravagant hospitality, they could now serve wines to their influential guests with the Rothschild name on the bottles! This hospitality was delivered in sumptuous homes built across Europe: over 40 of them, including seven in this area – but more of this in the next issue.

The members of this remarkable family broke through the restrictions which originally bound them to the ghetto to become a controlling force

behind many of the economic and political moves which had global effects during the C19th. At the end of the 19th century, most of the buildings in the Judengasse were demolished, but the former Rothschild house remained as a museum, honouring one of the city's most famous and successful families. However, nothing now remains of the place where their story originated: Allied bombing raids in March 1944 made sure of that!



The Rothschild House in the Frankfurt Judengasse

NEXT ISSUE: Part 2: The Rothschilds in England

VILLAGE ENVIRONMENTAL SERVICES

DOMESTIC DRAIN SERVICES

Proprietor: Dennis Cook
Est. 1979

BLOCKED DRAINS?

FAMILY RUN BUSINESS SINCE 1979

BLOCKED DRAINS CLEARED

REASONABLE RATES

CCTV DRAIN SURVEYS

NO EXTRA CHARGE FOR EVENING, WEEKEND OR BANK HOLIDAY CALLOUTS

FULL PUBLIC LIABILITY INSURANCE

CALL US DAY OR NIGHT

**24/7
CALLOUT
SERVICE**



07850 635 844 01296 624 221 (MESSAGES)



Coles & Blackwell

Car Service & Repairs

Book online at:

www.colesandblackwell.co.uk

Quality car servicing and repairs much closer than you think!

Where are we? You will find us 300 metres down the small lane opposite the top of Bradenham Wood Lane in Walters Ash, High Wycombe HP14 4UX

Established in 1959



Servicing

Did you know you can get your car serviced by us without invalidating your manufacturers warranty? Legislation passed a few years ago means that you can now choose any garage of your choice to service your vehicle.

Courtesy cars

We have a fleet of new loan cars at your disposal whilst we service your own car or repair bodywork damage. Best of all - they are FREE OF CHARGE! All part of the service you come to expect from Coles & Blackwell

air conditioning

mot testing

vehicle servicing and repairs

crash repairs

tyres, clutches & brakes

computerised diagnostics

batteries & exhausts

Open Monday to Friday 9:00am to 5:30pm

Saturday 8:30 am - 12:30pm

01494 563102

FAMILY FAVOURITE RECIPE

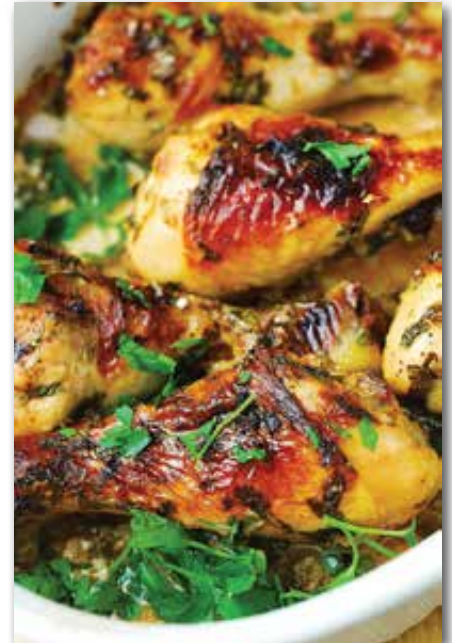
Amanda Dobbs

Buttermilk Chicken

Ingredients

- 6 chicken drumsticks
- 1/2 teaspoon regular salt
- 1 cup buttermilk
- 1/2 teaspoon freshly ground black pepper
- 1 tablespoon olive oil
- 1/6 bunch of minced fresh parsley
- 5 crushed garlic cloves
- Fresh chopped parsley to garnish

1. Combine the buttermilk, olive oil, minced garlic, minced fresh parsley, salt and black pepper in a small bowl and whisk really well. Place the chicken drumsticks in a large freezer bag, pour the buttermilk marinade over the chicken and distribute evenly over all drumsticks. Making sure they are all coated well, zip up the bag and put it in the fridge to marinate for 24 hours (or at least overnight).
2. After your chicken has been marinated for 24 hours, preheat oven to 200° or gas mark 6, place the chicken and marinade into a medium size casserole dish, cover with foil and place in the middle of the oven. Roast for about 20 minutes and then remove the foil to allow the chicken to colour and cook for approximately another 15 to 20 minutes (depending on your oven), until chicken juices run clear and the chicken drumsticks are browned.
3. Serve immediately with hand cut chips and a nice salad.



K. J. WINDOWS & DOORS

UPVC WINDOWS & DOORS

CONSERVATORIES

FASCIA & SOFFITS

BI-FOLDING DOORS

MISTED & BROKEN UNITS

REPAIRS

ALL WORK GUARANTEED

CALL KEITH: 07539 367200



Care in your own home

None of us like the idea that we might lose our independence or dignity. At Universal Care we can provide the help that you require to continue having a dignified and independent life at home.

If you are considering either live-in or daily care for yourself or a loved one you can rely on us to provide friendly advice and help that takes into account each individual's different need. Our experienced Care Managers will be happy to talk to you or visit you at home to discuss your needs and to find out how we can help.

Call 01494 678811
or email care@universal-care.co.uk
www.universal-care.co.uk



UNIVERSAL CARE

always there

Breast Friends

Breast cancer has recently been hitting the headlines once again, perhaps unsurprisingly, since this illness is the single most common cause of death in the UK in women aged 35 – 54 years. Shockingly, one in eight women will develop breast cancer in their lifetime.

Breast Friends is a small Aylesbury-based support group run entirely by volunteers and offers a listening ear as well as practical, confidential support to those who have been affected by breast cancer. The group was formed several years ago to ensure that others in the area would not feel the same isolation that many ladies had experienced following their diagnosis of breast cancer and treatment

Members of Breast Friends meet once a month, usually at Mandeville School, Ellen Road, Aylesbury, on the first Tuesday of each month from 7-9pm. This offers the opportunity to get together for a chat over tea and biscuits in a supportive and informal atmosphere. The monthly meetings often include guest speakers and other social events.

Whether you have just been diagnosed, are currently undergoing treatment or completed your active treatment a while ago, the group offers emotional support and practical, up-to-date information.

Above all, the group offers an understanding voice at the end of the phone by someone who has been there, should you ever need it.

If you or someone you care about has been affected by breast cancer and would like to learn more about our group, please take a look at our website or call Jan on 01844 290362.

www.breastfriends-aylesbury.org.uk



Help improve cancer services in the area

The Buckingham Cancer Patient Partnership is a group of volunteer patients, relative and carer representatives who work with healthcare professionals on standardising and improving cancer services.

The group has been closely involved in the development of cancer services which has led to the implementation of a more patient-focussed service by healthcare professionals.

The group plays a part in monitoring the quality of cancer services, ensuring that vacancies are filled and that high quality of care is available.

Our group meets alternately at Stoke Mandeville and Wycombe hospitals every three months at lunchtime to discuss the work and achievements of the Group in improving and monitoring cancer services across Bucks.

We cover areas such as:

- Observing Cancer Clinics and recommending changes.
- Advising on patient information leaflets to ensure they are user friendly.
- Participating in reviews of services
- Monitoring the quality of patient services
- Car parking charges for cancer patients
- Responding to patients' survey outcomes
- Consulting with patients, relatives and carers regarding cancer service waiting times and pharmacy services.

If you are a present or past cancer patient, relative or carer and you are interested in attending, your experience would be very valuable and we would be very glad to welcome you. You can be involved as little or as much as you would like, and you do not need to have any medical background - everything is discussed in laymans terms.

If you would like to know more, please contact us for further information on 01296 316954.

WHO'S WHO

Bucks County Council - Member for Lacey Green	Carl Etholen	01494 564771
Hughenden Parish Council - Chairman	Roger Beavil	01494 715296
Lacey Green Parish Council - Chairman	Cathryn Davies	01844 342800
Lacey Green Parish Council - Councillor for Speen Ward	Roger Craft	01494 488343
North Dean Good Neighbours	Judith Broadley	01494 563178
North Dean Village Hall - Bookings Secretary/Fete	Jez Wicks	01494 563517
North Dean Village Hall - Secretary	Alison Kent	ath@bfarms.co.uk
Pigotts 7 '48' Musical Evenings	Nick Wheeler-Robinson	01494 562167
Riding for the Disabled	Gloria Holmes	01494 488420
Speen Good Neighbours	Pat Richardson	01494 488627
Speen & North Dean Guides	Pauline Hall	01494 488372
Speen & North Dean News - Advertising	Tom Dent	01494 488943
Speen & North Dean News - Chair	Gloria Holmes	01494 488420
Speen & North Dean Toddler Group	Laura Chapman	
Speen Baptist Church	Rev. Heather McIntyre	01494 488067
Speen Fete - Chair	Amanda Dobbs	01494 488887
Speen Helping Hospices - Secretary	Maureen Laing	01494 488397
Speen Marquee	Greg Cook	01494 488939
Speen Playing Fields - Chairman	Tony Bobroff	01494 488688
Speen Pre-School Chair	Helen Davies	01494 488847
Speen School - Head	Denise Nayna	01494 488321
Speen School PTA - Chair	Clare Morris	01494 488553
Speen Stores	Alison Templeman	01494 488258
Speen Tennis Court - Secretary	Philippa Lane	01494 488453
Speen Village Hall - Bookings	Sue Taylor	01494 488500
Speen Village Hall - Chairman	Bill Groves	01494 488180
Speen WI - Secretary	Jean Morris	01494 488529
Wycombe District Council - Member for Lacey Green & Hampdens	Cllr. Graham Peart	01494 488327

BEECHDEAN

Farmhouse Dairy Ice Cream

Made from fresh Jersey milk
and rich double cream

Ice Cream for Every Occasion!

- Made Fresh on the farm
- No artificial colourings or additives used
- Suitable for vegetarians
- Gluten free



Beechdean Dairies, Old House Farm, North Dean, High Wycombe, Bucks HP14 4NL
01494 563980 | www.beechdean.co.uk



@BeechdeanGroup



Beechdean Group



Homes of Distinction

If you are looking for a very special property or have one that would benefit from our award winning marketing then we are ready to act on your behalf.

01844 343131
Princes Risborough Office

01494 711677
Hazlemere Office

FINE & COUNTRY
fineandcountry.com™