



Spring/Summer
2016
Issue 65

THE SPEEN & NORTH DEAN *News*

www.speenbucks.org.uk

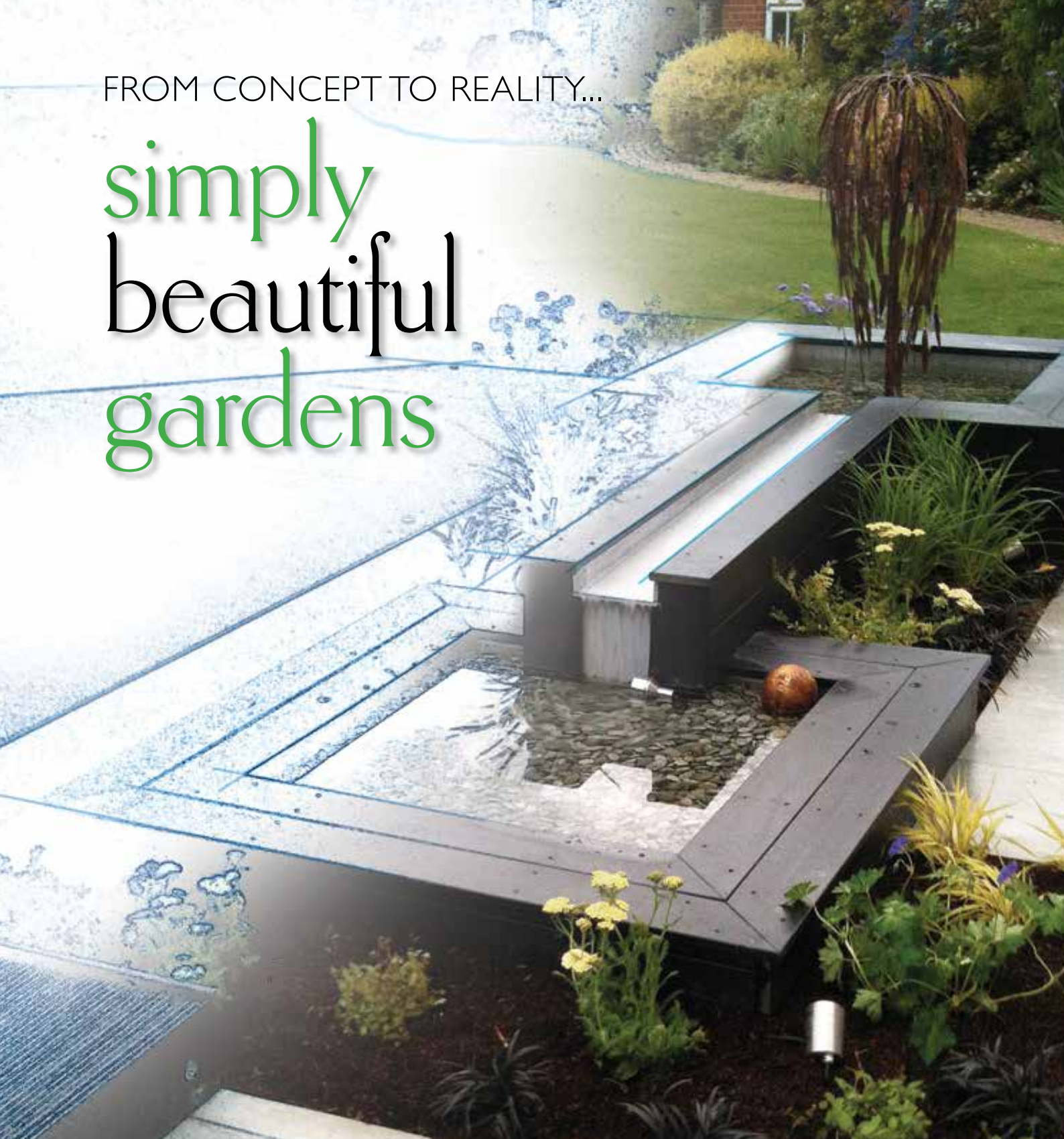
Inside:
SCARECROW-tastic!
Let's decorate the
village for the Fete!



*We Cleaned
for The Queen!*

FROM CONCEPT TO REALITY...

simply beautiful gardens



Alchemille has been designing and creating beautiful, innovative, inspirational outdoor spaces since 2004. From urban courtyards to country estates, we can create and care for the simply beautiful garden of your dreams.

DESIGN • PLANTING • AFTER-CARE



01494 488072 • 07909 936718 • info@alchemille.co.uk

www.alchemille.co.uk

Welcome! The sun is shining (well it is today, anyway), the trees are in bloom and we are heading into that season where we do what we do best in this magical pocket of the Chilterns.

Kicking off the jollities will be Speen Fun Day on the 11th with a BBQ at noon, followed by The Games at 1pm, then into the marquee at 3pm armed with cake, cake and more cake - oh and don't forget friends, family, neighbours and chairs - to celebrate The Queen's 90th in true village style. There will be a lovely service of Thanksgiving in the Chapel on the 12th to mark the occasion too.

Then there's Speen Fete, this year on 9th July. We need to get our creative hats on and start building scarecrows to decorate the village! What a great idea Amanda Dobbs! I'm expecting lots of good material for the next issue!

Please do cast an eye over the top item on p7: Random Acts of Kindness. We think there will be a few entries for this - let's recognise those lovely unsung heroes out there.

And finally, a limmerick competition ...
 "There was a young lad from North Dean ..."
 Entries please to editor@speenbucks.org.uk
 (Publishable versions only please!)

Enjoy the fun! *Jacqui Laing*

Welcome Packs

The Good Neighbours scheme was set up many years ago and is now run by Pat Richardson in Speen and Judith Broadley in North Dean. One service is to provide new residents with a Welcome Pack of village information, so if you know of anyone new to the area please call:

Pat Richardson (Speen) 01494 488627
 Judith Broadley (North Dean) 01494 563178
 or email cooljude@btopenworld.com

Next Edition

Copy for the next edition is **due by 10 July 2016** with a planned publication date of early August. Please send photos separately from text, together with captions and a consent form (downloaded from the SNDN website www.speenbucks.org.uk) if any of the photos are of children.

Please send to editor@speenbucks.org.uk.

Contents

What's On	5
Village Hall	7
Random Acts of Kindness	7
Playing Fields	9
Toddler Group	10
Speen Pre-School Visit	10
Speen Pre-School	11
Speen School Sensory Garden	12
Speen School PTA	13
Scout Hut & Tennis Court	15
The Marquee	17
Speen Helping Hospices	19
Easter Fun at the Chapel	20
Project Restoration	21
Hello's, Goodbyes and Thank You's	22
Annual Ski Tri	23
Sunday Cycle Group	23
Speen WI	24
Clean for the Queen	24-25
Service of Thanksgiving for the Queen	26
Queen's Birthday Tea	27
Speen Fete	29
Speeding Update	30
Garden Group	30
Spotlight on a Local Business	31
A Local Hobby - Geocaching	32
A Pigotts Celebration	33
Wildlife Watch	35
Speen Heritage Group	36-37
Lacey Green Parish Council	37
Beechdean Down on the Farm	39
Notes from the Town Hall	41
Neighbourhood Action Group	41
Universal Care	43
Who's Who	46

EDITORIAL TEAM: Jacqui Laing & Mei Price • ADVERTISING: Tom Dent

COMMITTEE: Gloria Holmes (Chair), Megan Chinn, Nick Wheeler-Robinson, Julie White

DESIGN & PRODUCTION: Jacqui Laing • PRINTED BY: PK Inprint Ltd (01494 452266)

www.speenbucks.org.uk

Award winning Design

Extension • Conversion • New Build

Overall Winner

Chilterns Design Awards 2015

Regional Finalist

Local Authority Building Excellence Awards 2015

SQUARE

Jeremy Symondson

Foursquare Land Limited

Old Smithy, Great Hampden,

Buckinghamshire HP16 9RF

jem@4squareland.co.uk

tel: 01494 488877

mob: 07789 201616

NEW

Buckmoorend farm shop



HOME REARED MEATS AND LOCAL PRODUCE



On the Chequers Estate, Butlers Cross

info@buckmoorendfarm.co.uk

buckmoorendfarmshop.co.uk



01296 620493 Butlers Cross HP17 0UT



SPEEN STORES

Your useful little shop

Freshly baked bread daily

Sub-Post Office

Fresh Fruit & Vegetables

Free Range Eggs

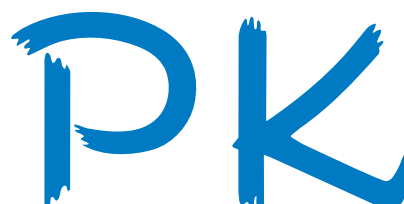
Homemade Cakes

Handmade Greetings Cards

Please visit the village website

www.speenbucks.org.uk

for opening hours and more information



InPrint Limited

Newsletters

Leaflets

Programmes

Brochures

Folders

Labels

Stationery

Carbonless

Instructions

Printers of Speen & North Dean News

DESIGN, ARTWORK
DIGITAL & LITHO PRINT

all under one roof

8 Wycombe Industrial Mall

West End Street

High Wycombe

Buckinghamshire HP11 2QY

T: 01494 452266

F: 01494 452216

E: mail@pkinprint.co.uk

W: www.pkinprint.co.uk

CONTACT US NEXT TIME YOU NEED A PRINT QUOTATION
if it's on paper we print it

WHAT'S ON

in Speen & North Dean

JUNE

2nd June	WI 'The World of a TV Extra'	Speen Village Hall	Jean Morris 488529
5th June	Horses Hounds & Heroes	The Horse Trust	488464
8th June	Garden Group visit to Chalgrove	Meet at KWIV car park	Jane Oury 488317
9th June	Knit & Knatter	Speen Chapel 7.45pm	knitknatter@treenies.com
11th June	Speen Fun Day	Speen Playing Fields	Matt Davies 488847
11th June	Queen's 90th Birthday Party	Speen Playing Fields	John Holmes 488420
12th June	Service of Thanksgiving for the Queen's 90th Birthday	Speen Chapel 11am	Heather McIntyre 488067
20th June	Speen SchoolFest	Speen School	Clare Morris 488553
25th June	Speen School PTA Summer Ball	Speen School	Clare Morris 488553
30th June	Knit & Knatter	Speen Chapel 7.45pm	knitknatter@treenies.com

JULY

5th July	Garden Group visit to National Herb Centre & Broughton Grange	Meet at KWIV car park	Marion Grimsdale 488722
7th July	WI 'Writing and Other Lunacies'	Speen Village Hall	Jean Morris 488529
9th July	Speen Fete	Speen Playing Fields	Amanda Dobbs 488887
17th July	Afternoon Croquet Tournament with strawberries & Pimms in aid of LIFT	Speen Chapel	David Slade 488262
14th July	Knit & Knatter	Speen Chapel 7.45pm	knitknatter@treenies.com
28th July	Knit & Knatter	Speen Chapel 7.45pm	knitknatter@treenies.com

SEPTEMBER

4th September	North Dean Fete	N Dean Playing Fields	Andrew Howard 562775
---------------	-----------------	-----------------------	----------------------

NOVEMBER

5th November	Speen Bonfire Night	Speen Playing Fields	Tony Bobroff 488688
--------------	---------------------	----------------------	---------------------

DECEMBER

9th December	Speen Christmas Tree Lighting	Speen Playing Fields	Amanda Dobbs
--------------	-------------------------------	----------------------	--------------

List of Advertisers

A Cut Above, Alchemille, Allied Healthcare, Beechdean Farmhouse Dairy Ice Cream, Buckmoorend Farm, CG Tree & Garden Services, Coles & Blackwell, Foursquare Land, Fraser Morgan School of Dancing, Hampdens, Heppelthwaites, Hughenden Builders, Independent Living Consultants, JML Training & Consultancy, JNP, John Bishop, John Easterling, Judith A Newenham, KJ Windows and Doors, LJM Electrical, M R Collins, MWH Interiors Limited, National Energy Foundation, Nelson Electrical, Nick Higgins, Nicki Thomas Web Design, Paul Newman Ltd, PK InPrint, Risborough Area Community Bus, SB Decorations, Speen Stores, Springline Cars, Universal Care, Village Environmental Services.



A Cut Above

Have you discovered your local salon yet?

A Cut Above is situated in the heart of Speen village with easy parking. A unisex salon with a warm family friendly atmosphere.

Chris Stiles and Cathy Wardle are experienced professionals providing cuts, colour, styling and hair care advice at an affordable prices.

For appointments: **Salon 01494 488899 • Chris 07789 115 942 • Cathy 07753 858 611**
A Cut Above, Over Speen Stores, Chapel Hill, Speen HP27 0SL
We hope to see you soon!

MANUFACTURERS OF FINE BESPOKE KITCHENS

RESTORATION & REPAINTING OF EXISTING KITCHENS



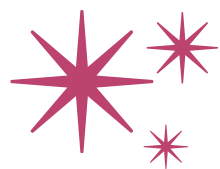
FITTED AND FREE-STANDING FURNITURE

PAINTED | KITCHENS | NAPHILL

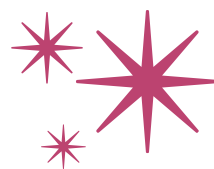
07768 975 323

johneasterling4@gmail.com

exclusive hand-painted kitchens



RANDOM *Acts of Kindness*



The committee of the Speen & North Dean News think that random acts of kindness matter, and we would like to offer a small monthly prize for just that.

What is a Random Act of Kindness? When someone, unasked, does something, possibly unexpected, to help, cheer or assist someone else - generally someone outside of their own family or circle of close friends. Doing the family washing up (even unasked) doesn't really qualify, but realising a particular need of a neighbour and doing something about it (whilst expecting nothing more than thanks in return) is what we are talking about.

So if a random act of kindness is done to you - or you hear of something someone has done - please write a brief account of what happened (postcard size). Give it into the Village Shop (thank you) and each month we will select a well-deserved recipient to be presented with a small prize.



SPEEN VILLAGE HALL

Bill Groves, Chairman Speen Village Hall Management Committee

It has been a busy time for the Village Hall. The Annual Christmas Fayre proved a great success, contributing just under £1000 to Village Hall funds. This was followed in January with a film & food night for which tickets sold out in the first week on sale and in March there was a packed hall for an excellent Garden Club talk

We have been very fortunate in recruiting Jane Farley to the Management Committee, making a husband and wife team.

We have now, thanks to John Radford, installed a new electric film screen which has proved very useful.

Future events include a joint Speen Playing Fields and Village Hall celebration tea party for the Queen's 90th birthday on Saturday 11th June. We will be holding another film & food night on Saturday 29th October and the Christmas Fayre will take place on Saturday 3rd December.

The Village Hall is a great venue for events family parties and all sorts of meetings so please help us maintain the Hall for all the Villagers and for future generations.

To make a booking please call Sue Taylor on 488500.

THANKS TO ALI



We think it's time to send a big shouty THANK YOU to Ali, Bob, Connie and the team, who work tirelessly to provide us with the perfect hub to our community. They get up at the crack of dawn to make sure our papers are folded and croissants freshly baked, they listen tirelessly to our moans, cheers and gossip, and once again this Christmas they rounded up their friends, donned their elf costumes and worked through the night to make sure we all woke up to a little Christmas treat on our gatepost.

And now we have a lovely seating area to sit outside the shop in the summer and watch the world go by over tea and cake.

Ali, we're lucky to have you - thank you for all that you do!



design · refurbishment · construction



- Interior building work and alterations
- Bathroom design and installation
- Kitchen design and installation
- Full property renovations
- All work covered by comprehensive insurance and full guarantee

t: 01494 488002
m: 07866 738829

mwh | interiors

www.mwhinteriors.co.uk info@mwhinteriors.co.uk
Hayton Cottage, Flowers Bottom Lane, Speen, Princes Risborough, HP27 0PZ



A bespoke management training and coaching company established in 1997, working in the private and public sector.

Recognise and capitalise on your potential

Do you need to give yourself the space to broaden your thinking, further develop your skills, confidence and competence in today's demanding environment?

We offer a coaching service that is confidential, flexible, targeted to meet clear goals and expand your skills base. We provide objective executive coaching that will support your professional, business and personal development.

In-house training

Maximise the level of talent skills and performance in your organisation. We specialise in the design and delivery of practical, interactive and results focused in-house training. Let us help you develop your people.

Check out our website at www.jml-training.com
or call us on **01494 488787** for further information

SPEENPLAYING FIELDS

Tony Bobroff, Speen Playing Fields Chair

We have an excellent group of Trustees, who once again this year worked tirelessly together and I am delighted that we have 2 more joining us. Clare Morris, who succeeds me as chair in September, and Angela Forkgen. Welcome to both and thank you. On a personal note it has been an absolute pleasure to have been Chairman of SPF for 5 years, and to have benefited from the support and friendship of my fellow Trustees. I would like to continue as a Trustee, but it's wise to quit the chair whilst ahead!

As you know we have for some time been negotiating with the Parish Council a lease on the limited playground area of the field, to allow them to invest in the play equipment, which requires upgrading. The draft lease is with the Solicitors now and we are hopeful that this will be agreed within the next few weeks.

The Draw, which generates about half our income, is now computerised (although we still enjoy drawing the balls out of the bag) and is being very efficiently run by Cristina Delgado; for which we are very grateful. We are seeking to grow the number of participants and sell more tickets to existing supporters this year, so I thank all you Speenies and Denies for your continuing support, which allows us to maintain your fields.

The Pre School are increasing their use of Ridgeley's Field for their Forest School to twice a week and we have cleared a substantial area within the wood for seating area, mud and fire pit for them. This has been very worthwhile although has necessitated some extra tree maintenance work and expense. We have requests for further upgrading of that facility to include a storage area and extension of the pathways.

Fun Day 2015, with a Referendum driven Scottish Theme, had to be postponed by a week owing to driving Scottish rain and consequential bun & burger binning but this in no way dampened the enthusiasm of the young Speenies when the call to arms eventually came. It was a great day thoroughly enjoyed by the young and not so young! Matt Davies once again took the lead, a huge vote of thanks to him and all the Fun Day committee Duncan Dow, Pete Symonds, Andy Thompson, Keith Fisher and Greg Cook for organising the Games with such ingenuity.

Fun Day 2016 has an Olympic/Referendum theme with a Bar & BBQ from Mid day onwards, Matt and the crew have devised some great games, so do come along on June 11th, to be followed by the Queen's Birthday Tea party in the marquee.

This was a Festival year so the field and Marquee were once again used for many of the events including a superb production of the Railway Children! with record-breaking audiences and the Proms finale. Ridgeley's Field was the scene of the Bike Park challenge and HQ for the Speen camp out. Many thanks to all those involved in helping Sam and Kate with their tireless Festival organisation.

The event was followed by the Craft Fair, in the Marquee, organised by Christine Symondson and the Speen Group committee, raising money for Hospices in Buckinghamshire - a wonderful cause.

The Village Fete on the field in July was a great success and we were all the more grateful to the Fete Committee who once again supported us with their generous donation. Many thanks to all those who helped; the Fete involves a huge amount of work in setting up and striking.

No Playing Field calendar is complete without Bonfire night. Christian and Pete combined their substantial talents, and once again did not fail to impress. The creation of an space ship 9 meter long by 6 meters high complete with pre ignition smoke, extra terrestrial music and a visiting alien attempting to kidnap Earthling Speenies to another planet. The weather for the 2-day build was atrocious, making the construction itself a massive task. My thanks to all the good folk of Speen who dragged themselves and tons of wood through the mud.

On the night the weather cleared a little and we achieved a record turnout. This combined with Keith's fireworks and food supplied by the Pre-School mums ensured a great evening. This year the Son et Lumiere will be further enhanced by the new PA system we have purchased for the village, many thanks Andy Thompson and Anthony Cox for organising.

The closing event, as always, was the Lighting of the Christmas tree, (much aided this year by the use of Charlie Fox's cherry picker, saving me from balancing at the top of a ladder). We congregated at the Village Hall, where the new Minister conducted a children's' performance then led us in Carols. Many thanks to Debbie and Lesley for organising and for the mince pies.

We even managed to collect £128 for the Ian Rennie Hospice in recognition of the help they gave dear Cherry Seekins.

Tony Bobroff

SPEEN & NORTH DEAN TODDLER GROUP

Laura Chapman

Speen and North Dean Toddler Group meets every Tuesday during term-time from 09.30-11.30am in North Dean Village Hall. We are a small and friendly group of parents, grandparents and carers and welcome babies, toddlers and pre-schoolers.

We have lots of great toys, including those encouraging active play (slide, trampoline, Little Tikes cars), role play (kitchen, train sets, Happyland), craft (colouring, play dough, messy play) and construction (Duplo, puzzles) etc. We also have a designated baby area.

The children had lots of fun last term, when the Easter bunny came to visit. We made and decorated Easter baskets and the older children took part in an Easter egg hunt. Some chocolate was consumed!

The village hall is in such a beautiful setting, we look forward to also being able to use the outdoor play area next term if the weather cooperates!

If you would like to join us please feel free to come along any Tuesday during term-time between 09.30-11.30. £2 per family, which includes coffee/tea and biscuits for

grown-ups and healthy snacks and fruit for the children. We are a parent-led group and work together to set up, pack away toys and serve refreshments. For further info please contact Laura Chapman.

laurachapman9@gmail.com



Joah Chapman and Esme Khan

SPEEN SCHOOL VISIT

by Holly Forkgen and Beth Travis, aged 7



On the 21st March we went to the River Rowing Museum in Henley. In the morning we learnt about materials in one of the classrooms. We made medals which we took back to school and painted the next day when the plaster had gone hard. In the afternoon we walked around the galleries and did different activities. We also went through a tunnel where you can see lots of different characters from the Wind in the Willows. Reception did things the other way round. In the morning they went round the galleries and in the afternoon they were in the classroom doing 'Rowing to Rio'. Then we all went back to school on the coach.



SPEENPRE-SCHOOL

Helen Davies, Chair

The Pre-school has had a wonderful Spring term, and although the weather has been against us we have managed to make regular use of all our outdoor spaces. The Spring term has also been my first as chair of Pre-School and my thanks goes to all those who have supported me and helped the transition, I certainly had big shoes to fill as Alex Allan did such a wonderful job.

The first half of the term the children were developing their artistic talents with junk modelling and making an amazing display of The Very Hungry Caterpillar. The role play area was set up as a construction site, the children were encouraged to explore light and shadows using torches. Role play is a very important part of child development encouraging socialising, stimulating language development, teaching co-operation to name a few areas.

After half term we initially focused on Mini Beasts, there was a very well stocked mini beast laboratory set up as role play. The children investigated how smaller animals moved as made their own fossils. As we got nearer to Easter the children had a wonderful time "Going on an Easter Egg Hunt"; we used this wonderful story as part of our Easter service held at Speen Chapel. They had great fun making Easter Baskets and using play dough to construct spring flowers. The most mess (hence the most fun) was made when making chocolate Easter nests, which they took home.

The staff team sets off each half-term with a plan of activities and themes for the children to get involved in and update these plans weekly in line with every child's needs and interests. The children have particularly enjoyed messy play this term, getting stuck into all kinds of things from sticky mud, coloured rice and ice to searching for letters and numbers hidden in shaving foam and dinosaurs buried in sawdust.

The Pre-School is very lucky to have amazing outside space available to them. For many years we have taken advantage of the site in Ridgley's field and are able to offer a Forest School based learning environment. The Forest School is run on a Friday and Tuesday morning in rain or shine! The children love being outside allowing their imaginations to

dictate the learning during the session. We are very proud of this unique area of education and are very grateful to the playing fields committee who help support our efforts to offer a safe area for the children. Unfortunately the area suffered a lot of damage over the Easter holidays, the children's wooden tables were smashed and broken glass was left lying around. This was reported to the Police so if you see any suspicious activity please report it.

The parents were very busy at the end of the term with our fundraisers. The first was the annual Easter egg hunt, with the playing fields played host to nearly 100 children and



their families on a treasure hunt for clues, this led them to their final destination, the village hall where their "eggscellent" gift awaited. Parents and Grandparents were rewarded with Speen's finest home-made cakes. A big thank you to those who helped and attended, and a special thank you to Naomi Rogers who did an amazing job of organising the hunt this year. The last week of term we held a brand new event, The Grand Draw and shopping evening.

We were overwhelmed by the generosity of the villagers buying the draw tickets and tolerating the Pre-School mums knocking on your doors, cap in hand. The Draw and the shopping evening were a wonderful success and has allowed the Pre-School to look forward to some much needed new equipment. Your support for the Pre-School through-out the year, at all our various fundraisers, is always very much appreciated and allows our small village Pre-School to not only continue, but to thrive.

The summer term has now started and we are looking forward to lots of outdoor play. We are also very much looking forward to getting involved in SpeenSchoolFest again this year. And of course Pre-School will be fully supporting the organisation of the Summer Ball fundraiser in partnership with the school.

Speen Pre-School is open to children aged from 2 to 5 years. We have spaces available during several sessions. To enquire about a place or receive a prospectus please call Pre-School on 01494 488160 during term time or email office@speenpreschool.org.uk.

www.speenpreschool.org.uk

SPEEN SCHOOL SENSORY GARDEN

Jeni Fairey

School Sensory Garden adds to the rich array of outdoor experiences for the children

Following the successful rejuvenation of the school pond area last year, made possible by advice and plant donations by a great many generous people throughout the village, the school recently embarked on the creation of a Sensory Garden.

What started as the idea of our Reception teacher Mrs Hayman, another fantastic team effort consisting entirely of local trades and volunteers came to fruition last November and is just starting to flourish with the onset of Spring.

Teachers collaborated with pupils and parents to design the layout of the garden which includes four rooms to stimulate the senses of touch, taste, hearing and smell whilst the central seat gives the children a 360 degree view or "sight" of the garden.

Teachers and parents are very keen to optimise the beautiful rural setting and grounds to benefit the children in all areas of learning. Recent topics covered by the children include the study of minibeasts and wildlife habitats and the rich variety of the school grounds has been beneficial to this end.

After some very determined fundraising by our tireless PTA, the build was started during October half term which was thankfully dry. A local garden landscaper, Nick Bacon, who is also an ex-pupil of the school created the hard landscaping with materials supplied by the very generous sponsorship of local firm Country Supplies - the owner of which is a current year 2 parent. The donation of a huge tractor tyre by local farmer and ex-parent George Uhart provides a fun focal point in our 'touch' garden.



Marking Out



Shortly After Planting

Kathryn Hibberd is a friend of a teacher and award winning Garden Designer who very kindly shared her expertise by designing a wonderful planting plan, carefully tailored to stimulate the senses.

The planting was completed entirely by parents who had their work cut out with our very flint-filled, heavy clay soil during a spell of particularly cold weather! The upkeep of the garden is now carried out by the Year 2 Eco- Club with parent volunteers and so the learning is most definitely hands-on!

The school would like to extend a huge thank you to all those involved in making this idea a reality which is much enjoyed by our children on a daily basis.

Plans continue to further enhance our outside space to create more outstanding opportunities for outdoor learning.



The 'Sight' Seat



The 'Touch' Garden



Our Quiet, Contemplative Area

SPEENSCHOOL & PTA

Clare Morris, PTA Chair

An early Easter resulted in a very short spring term for Speen C of E School. The main result being a very hectic but fun filled few weeks for the children, parents and teachers.

Transport

The topic for the spring term was transport and highlights included:

- Paramedics and an ambulance car visited the school. The children all got to have a look inside both the car and the medical bag that the paramedics use. They discussed how they would ring for emergency services and the importance of knowing their address.
- A visit by astronomer and soon to be astronaut Nigel Henbest who came to talk to the children about space and his training to join Virgin Galactic.
- The school visited the Henley River and Rowing museum. The children had a fantastic morning looking at the river Thames, learning about all the things you need to be able to row and visiting the Wind in the Willows exhibit whilst the afternoon was spent finding out all about the Olympics.

Sports

Continuing the sports theme the school hosted back in March the KS1 Cross Country festival with several other local schools in attendance. Despite the cold and damp the children were hardy and ran very well and were really pleased to come joint second in the tournament. Thank you to the Playing Fields committee for allowing us to use the facilities and to everyone in the village for their patience with the number of cars visiting and parking in Speen on that afternoon.

The Sports Relief charity was supported by the school with each of the children dressing up as a sportsperson for the day and collecting change in a specially constructed trainer savings box. Almost £150 was raised.

Drama

World Book Day was celebrated back on the 4th March with each class taking part in a Make Believe Drama Workshop. The younger children focused on Room on the Broom whilst the older children explored The Lion, The Witch and the Wardrobe.

Every two years, the Wycombe Alliance organises a music, dance and drama festival over three days at the Swan Theatre in High Wycombe. Speen CE School children have been various animals and children over the years but this year was the first time they had been Trees. Along with hundreds of other children from other local schools the year 2 children helped to tell the story of 'The Big Green Adventure'. It was a great experience for both those taking part and for all the proud families and friends watching.



Safari Supper & Forthcoming Summer Soiree

There was only one PTA event in the spring term – the infamous Safari Supper. It was a resounding success with over 60 parents and friends sampling the delights of the host houses before trekking back to school to burn off some of the calories on the dance floor. Thank you to everyone who supported this event – a fantastic way to bring the school and community together. A special thanks to Helen Davies who organised her final safari supper and has managed to pass the baton to the capable hands of Antonia Winson.

If you enjoyed the Safari Supper (or the tales from the night) then you can't miss out on the highlight of the PTA's and Pre-Schools fundraising calendar on Saturday 25th June. This year we will be hosting a Great British Summer Soiree – celebrating all things quintessentially British, with vintage chic inspired décor and a truly British themed 3 course meal. There will be no formal dress code but it is a chance to put on your glad rags and don't forget your dancing shoes with music late into the night! Tickets will cost £35 per person. For the latest updates, to book your tickets or offer up sponsorship or auction donations please go to www.speenschoolball.co.uk. We look forward to seeing many of you on the evening.

Wishing you a very happy summer.

www.speen-cofe-bucks.sch.uk

CENTRAL HEATING SYSTEM TYPES

There are many different types of central heating systems such as gas, oil, biomass, LPG and electric to name but a few. Getting the correct central heating system for your home will ensure you are not wasting money on high energy bills, and in some cases you could be reducing your carbon footprint and even be receiving cash incentives for using renewable energy products.

Getting the right solution will also depend on a number of factors, which could eliminate some of those options. For example, if your home is not on the national grid then you will not have a supply of gas, which eliminates the option of a conventional gas boiler system. However, there are a good range of options if you are not on the national grid, such as biomass, oil, LPG, ground source heat pumps and air source heat pumps. Below is an overview of some of the different type of systems.

NATURAL GAS: A gas central heating system works by gas heating water within a gas boiler. The hot water is then channelled through radiators and provides hot water through the taps.

OIL: An oil central heating system works in a similar way to that of a natural gas system in that central heating is provided through radiators and hot water through the taps in your home. The difference is that you have an oil fired boiler to heat the water.

BIOMASS HEATING: Biomass provides all your heating and hot water, with a clean, sustainable fuel eliminating the requirement for fossil fuel. Biomass boilers burn wood pellets, from sustainable sources and create an environmentally friendly carbon cycle.

AIR SOURCE HEAT PUMP: An air source heat pump (ASHP) is an electrical device that extracts heat from one place and transfers it to another. An air source heat pump uses a refrigerant system involving a compressor and a condenser to absorb heat and release it.

ELECTRIC: An electric heater is an electrical device that converts electric current to heat. Appliances include space heating, electric fire places, under floor heating systems and more.

LPG: LPG stands for Liquefied Petroleum Gas (or Liquid Petroleum Gas). It is designed as a safe to use alternative to regular gas central heating, oil-burning or biomass boilers. LPG can be stored in cylinders or tanks on any property large enough to house it.

Once you have decided on the source of energy, the next step is deciding on what products to consider and how to have it installed into your home to get the most out of it.

Heppelthwaite the Red Van Plumbers are here to help every step on the way, from design and installation to maintenance and servicing. Check out the full article including the pros and cons at www.redvanplumbers.co/central-heating-system-types

If you would like some advice or a free of charge estimate then please get contact us:

customer@heppelthwaite.co.uk
01628 533 550

Heppelthwaite 
The Red Van Plumbers

Which?
Trusted trader

2015 Winners
 Plumbing - Heating - Renewable Energy



01628 533 550
www.RedVanPlumbers.co.uk

Heppelthwaite the Red Van Plumbers are winners of the 2015 face of Which Trusted Trader competition. A family run plumbing and heating company covering Speen and surrounding areas.
Specialists in Gas, Oil and Biomass

SCOUT HUT

Pauline Hall. Speen Scout Hut Management Committee

We have now completed the current project to upgrade and repair the outside of the Scout Hut. The hedge between the gateway and the public footpath on Coleheath Bottom has been repaired by traditional hedge laying.

The work was carried out by DP Green Countryside and Forestry Contractors (info@countrysideandforestry.co.uk) who specialise in this technique. We are pleased to have

our boundary marked by this traditional craft which is in keeping with the local area.

Next winter we will infill any missing hedge plants with suitable species. We are grateful to Graham Peart for awarding a grant from his Ward Budget to cover the cost of the work. We hope in the future, as funds permit, to continue this project on our Chapel Hill boundary.



SPEEN TENNIS COURT

Philippa Lane

We are fortunate in this village to have a wonderful amenity in the well-maintained all-weather tennis court on Speen Playing Fields.

Use of the court is administered by Speen Tennis Club, which is run by villagers to ensure its maintenance and continued upkeep. To this end, there is an annual membership fee for anyone wishing to play on the court, whether from Speen or the surrounding area.

The subscription this year is the same as last year: £55 for a family, £30 for an adult and £10 for a junior. This allows unlimited use of the court throughout the year, subject to the booking system. Availability is usually very good, even over weekends.

We organise junior coaching after school on a Thursday during the summer term, run by a local LTA coach. We

are also happy to put players in touch with local coaches for private lessons.

We have a friendly relationship with the neighbouring club in Lacey Green and arrange informal open tennis mornings with their ladies during the summer.

In addition, we also receive an allocation of tickets for the Wimbledon Championships each year which we distribute to members through a local club ballot.

We are always keen to encourage new, old and even rusty players to join us. If you would like a membership form, or simply some further information, please contact our Membership Secretary Philippa Lane.

lanetribe@yahoo.co.uk

ILC Your Local Mobility Shop
Independent Living Consultants



Small aids for everyday independence!

Larger items for mobility and comfort.

Call us, or visit our showroom :
01844 27 30 50
10 Woodway, PRINCES RISBOROUGH HP27 0NN

www.IndependentLivingConsultants.co.uk

Nicki Thomas Web Design

Creating bespoke websites
for a
wide range of businesses

Visit www.nickithomas.co.uk
to find out more...

Hedgerows, Studridge Lane
Speen, Princes Risborough
HP27 0SA

Tel 01494 488665

Email nickithomas@storecomput.co.uk

Show us your home and we will show you the buyer.

Because it's important to you.

01494 611382
www.hamptons.co.uk



Beyond your expectations

THE MARQUEE

Greg Cook

The lure of FREE BEER works!

Ever wondered how you erect a marquee? Free Beer, that's how. Our village marquee continues to be a great asset for both our villages and I am sure it contributes to the success of each of the many gatherings particularly when the great British Summer is at its best.

We had an excellent response from the usual suspects to our various uppings and downings in 2015. We now need a few more of you, so in 2016 I encourage you to please bring a friend.

The first outing and upping in 2016 is the Speen Funday and the Queen's 90th birthday tea party on the 11th June 2016.

The marquee is a village asset owned by our community for the use of both villages and villagers (private parties welcome). It does rely on the continued good will of all of us to enable its erection and dismantling for each event. Its presence at the Speen School ball, Speen Fete, North Dean Fete, the Funday and the Speen Festival keeps the running costs for these events at a more reasonable level. Supporting ad-hoc events and private parties enables us to keep the charges to regular village events unchanged.

On that theme, our prices for hiring out the village marquee remain un-changed as we feel we are doing OK on the financial side and the ultimate strategy of replacing the marquee in due course is still a realistic proposition on the current usage and returns.

In 2016, we will again endeavour to erect the marquee on Friday evenings and strike it as appropriate, when we can generate support. With approximately 12 willing hands (adults) the marquee takes 90 minutes to erect and 60

minutes to strike. We struggle to erect it with less than 8 people as it is potentially unsafe to do so and quite simply it just takes too long with too few people. This is not hard physical labour and a selection of kids 10yrs and over lent willing and effective hands in 2015 so a huge thank you to all those who supported the success of each of the village events by turning up and drinking free beer (not available to the kids – alternatives will be provided).

We are looking for fresh faces on our small team of leaders so if you feel you are able to take control of either an upping or downing and would like to 'learn the ropes' please contact myself or any of the committee, full written instructions are provided.

The Free BEER will continue in 2016 so please keep an eye out for dates. I look forward to meeting some new people.

My thanks to the marquee committee, Ashley Cooper, Jem Symondson, James Entwisle and Roger Anderson (Treasurer).

But most importantly my thanks to each and every one of you who like FREE BEER! - not sure if I mentioned that previously?

DIARY DATES:

Funday & Queen's 90th Tea Party-

Up Friday 10th June @ 1800. Down Sunday 12th June @ 1700

School Ball –

Up Friday 17th June @ 1800. Down Sunday 26th June @ 1500

Speen Fete -

Up Friday 8th July @ 1800. Down TBC

North Dean Fete - TBC



CG Tree & Garden Services

Tree surgery & felling
Fencing
Hedge cutting, topping & turfing
Woodchips & firewood for sale



Free estimates • qualified staff • fully insured

Tel: 01494 562045
Mob: 07798 896380

BEAUTIFUL, *HANDMADE*
CURTAINS
& CUSHIONS, BLINDS, FABRICS, POLES,
TRACKS
for
ELEGANT, STYLISH HOMES

JUDITH NEWENHAM

FOR PERSONAL SERVICE
AND A
FREE NO OBLIGATION
QUOTE

01494868461
07788718242

JUDITHNEWENHAM@HOTMAIL.CO.UK



- Over 20 years experience
- All interiors and exteriors
- All wall coverings
- Free quotations

SB Professional
Painting & Decorating
Call Ben On:
07973 539495 or 01296 486470

References from completed work are available from Speen and surrounding areas

SPEEN HELPING HOSPICES

Christine Symondson, Chairman



On Friday 13th May Speen Helping Hospices held our annual Ladies Lunch at the Horse Trust's beautiful barn in Speen which they kindly provide free of charge. We had a glorious day and as usual the tickets were spoken for as soon as they were released. We would love to be able to welcome many other ladies to take part but the venue only seats 60. As usual we had our plant stall provided by Alchemille Gardens in Speen, our jewellery stall and a gift stall, all of which were popular and were able to contribute some of their profit to our funds. For the first time this year we also remembered to organise a list of the lunch recipes which sold out quickly - will provide more next year !

Our speaker on this occasion was the CEO for South Bucks Hospice Jo Woolf who was totally inspirational, talking about the aims and hopes for the new community hospice that is in the process of being built in High Wycombe. It only confirmed for our fundraising group why it was started in the first place and why it needs to go on fund raising for these amazing places that provide such special care for people with life threatening or limiting conditions. We have been able to give all four of the hospices we support £2,000.00 each already this year and the nearly £1,800 profit from the lunch will get us on our way to being able



to pass on further funds later in the year. £533 was raised at the Christmas Carole Concert collection at the Chapel and we would like to thank everyone for this generous and unexpected gift. We have also recently received £100 from the sale of some Spode china which was kindly donated to us by a friend.

For various reasons we will not be holding our Craft Fair this summer but will work on new ideas for a bigger and better event next year. We are currently sourcing an alternative venue for our Christmas Fair as the Pub is no longer open and plan a bridge event and hopefully another fund raiser in the late summer/autumn.

We would just like to thank all those who attended the lunch and those of you who have supported our group over the years. If any of you have suggestions for new events that you think would be popular do contact myself or Maureen Laing, our hard working secretary.

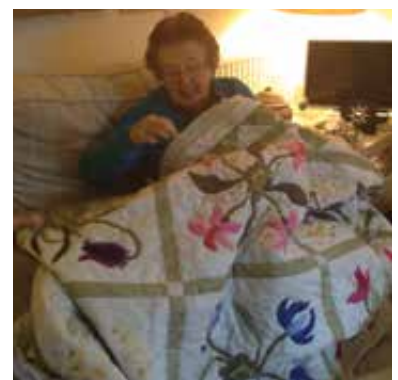
We look forward to seeing many of you at an event later in the year.

*Christine Symondson 488654
Maureen Laing 488397*



A friend of Speen Helping Hospices has made this beautiful quilt for us to raffle. It has all been stitched by hand, taking her over 400 hours. She hopes that we can raise an amount of money to reflect the number of hours she spent making it. We aim to show it at various events leading up to our Craft Fair.

Call Maureen for more information on 488397



EASTERFUN

Janis Hearn, on behalf of LIFT trustees

Thank you to Speen Stores, Community and Friends for supporting LIFT Easter Events!

Following the challenge and excitement of a well thought out Treasure Hunt on Easter Saturday by Ali around Speen village, children, families and community gathered to enjoy delicious homemade cakes and refreshments in Speen Chapel.

Easter Crafts were made available for the young people, faces painted with inspired creativity by Lucy Entwisle and a surprise visit from Speen's very own Easter Bunny all added to the enjoyment and fun!

Your support, generosity and valuable contributions to the Mother and Child Project Ethiopia is transforming lives, giving the precious gift of hope and opportunity to one of the poorest communities, one family at a time ...

Every penny donated by our supporters is sent to the field and altogether we raised a generous £1,036.00 from the village Easter events!

Congratulations to the winners :

Guess the Number of Eggs - Zoe Soper

Easter Hamper - William Summers

Name the Lamb - Roger Craft (*it was Mary by the way*)

If you have not yet seen a short 4 minute video and would like to see the Mothers, Children, Community and Income Generation Activities from last year's visit to Ethiopia please visit www.lifeinfulltrust.org

Once again THANK YOU - your generosity and help is greatly appreciated.





Speen Church and its halls have been at the centre of the village's vibrant community life since 1813. Built originally by voluntary subscription, our picturesque traditional Baptist chapel has long served families from the villages as well as the surrounding area, to High Wycombe, Naphill, Great Missenden, Bledlow Ridge and Cryers Hill.

But the future of this important, historic local landmark is under threat.

Following renovation in 2012, the Grade 2 listed chapel has enjoyed revival and has hosted popular village breakfasts, concerts and Festival events, in addition to regular Sunday activities.

But our close-knit community regularly meets in far greater numbers for important local gatherings:

- to remember the life of a family member, friend or neighbour
- to celebrate at Christmas (242 people poured in for Carols last year)
- to cheer a happy couple on their wedding day

And the facilities simply aren't up to standard for the needs of visitors. In fact they're unacceptable.

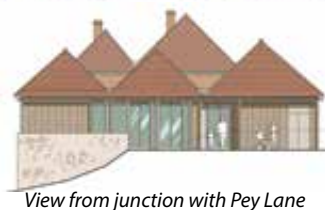
- The single inside lavatory provides inadequate capacity to support large attendances and it is often unserviceable.
- The kitchen and hall falls short of required standards for providing even basic catering and hosting
- The less able are unable to access any facilities due to variation in levels

In response, Speen Church is sponsoring Project Restoration - the rebuild and refurbishment of the kitchen, toilets and halls that adjoin the Chapel.

PROJECT RESTORATION Community Landmark Restoration

What's going to change?

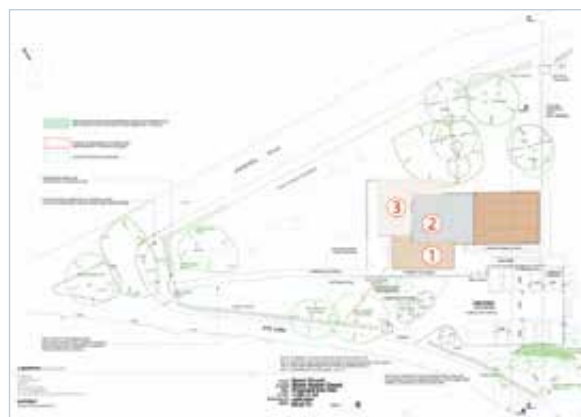
1. The kitchen and lavatories at the west corner of the building are to be replaced and a new and accessible place of welcome created.
2. Complete necessary upgrades to the existing hall and augment it to provide additional greeting, meeting and assembly spaces.
3. Build a 'wraparound' extension to the existing hall to improve capacity and create additional access points.



View from junction with Pey Lane

What will it look like?

Brilliant and award winning local architect, Jo Podmore has designed a scheme that meets the needs of the community and the environment, successfully complimenting the proportions and form of the Chapel with a contemporary and inspiring new design, perfectly integrated with its surroundings.



How much will it cost?

Approximately £300,000 for phases 1 and 2 marked on the plan

How is it funded?

Speen Church is the primary sponsor and project manager. Applications are in progress for the grants available for this kind of project. But local support will make all the difference (approximately 25% of the budget). Anyone with an interest is warmly welcomed to participate.

What happens if the work isn't completed?

Without the access, food or lavatory facilities required of a contemporary public space, the events and services which contribute so much in community life will cease to happen.

Get involved! This is an exciting opportunity to transform an historic local landmark and vital village amenity.

Visit the website: www.projectrestorationspeen.org

HELLO & GOODBYE

NEW RESIDENTS

A warm welcome to Speen is extended to:

Giles, Louise, Alex and Olivia Brookes-Usher who have moved into The Old Plow.
Naomi, Scott and Elsie Rogers who have moved into Cornerways.
Christopher, Corinne and Amelie Weir who have moved into Woodview Drive.
Lee, Margaret, Jos and Edward Turner who have moved into Moses Plat Lane.

Do you have new neighbours you'd like to say hello to on this page? Maybe a special thank you, a new addition to the family, a child off to university, a wedding or landmark anniversary or birthday to celebrate? If so, we'd love to hear from you.

Please email
**editor@
speenbucks.org.uk**



Cherry Seekins

The Seekins and Howell family would like to thank Speen and North Dean for their kindness and generosity. We raised £7,000 in Cherry's memory for Rennie Grove Hospice Care who were marvellous to her.

Cherry fell in love with the village one afternoon over 20 years ago and, in her time here was involved with many aspects of village life and people. She was truly overwhelmed with the love and kindness shown to her.

It is a wonderful village, full of lovely people in a beautiful part of the world. Long may that continue. Thank you.

*Dick, Poppy, Bryony & Rory
Glenwood Cottage*

WITH THANKS



Special thanks to Marjorie and Martin Stockley who have generously paid for a replacement Leaves of Time plaque to be cut in stone after the previous one split.

The new plaque has been cut in thicker granite so should be more resilient. Peter Symonds has kindly framed it in steel and secured it in a more upright position inside the protective frame around the Oak tree on the playing field.

And more thanks go to Peter, who has also beautifully repainted the Speen Village sign and members of the Heritage Group who have also restored the oak post and mounting which had split badly.

This has been done to coincide with the launch of the new Speen Heritage Trail Leaflet, which is now on sale in the shop.



ANNUALSKI TRIP

By Greg Cook for the Boys, and Cat Cook for the Girls



The fifth annual men's ski trip saw 30 men of Speen and North Dean, with a couple of additional friends, depart for four days of skiing in the 3 valleys region of France. Think rugby tour antics and you won't be far off. We had sunny days which were fast and icy to start with and a deep powder day to finish, which was hilarious. Many laughs, many fines and a great time was had by all abilities and two snowboarders to boot. We are booked for next year too!



Luckily for the ladies, Speen residents had not been banned from the resort of La Tania, so we followed in the boys' tracks in early March. All ski abilities were represented from the 'first lift last lift straight line speed skiers' to the 'couple of beginner runs and a coffee' team, all equally joyous to be away with friends old and new. Thoughts sometimes turned to the 44 children who had been left to the perils of daddy child care, but suffice to say, most of the team are going again next year - and we had better snow than the boys!

SUNDAYCYCLE GROUP

Greg Cook

As you might expect living atop the Chilterns, we have several very active cyclists in and around the village. Usually departing from the King William car park on a Sunday morning at 0900, there are groups of road and mountain bikers. At the moment, it being summer, we have mostly been focussing on road riding for some of the local sportive events but we do stretch our wings and six of us recently completed the Wales Velothon, an 85 mile closed road event from Cardiff. The next challenges are: six of us heading for the Dragon ride; a large group of us taking part in the Chiltern Classic and then a mixed bunch raising money for the Epilepsy Society through the Prudential London 100. This is another great closed road event. After that we are likely to be back on the mountain bikes to ride the Ridgeway to Goring for a pub lunch and meander back. All this is very sociable so come and join us if you fancy a few hours out on a Sunday morning.



SPEENWI

Jean Morris

Last Autumn we planted bulbs in the village to celebrate 100 years of the WI and their blooms have added to the wonderful spring colour around the village.



The current WI in Speen was formed in 1960 and at our April meeting we always celebrate with a Birthday Supper and this year was no exception. Guests from neighbouring WIs in Great Hampden, Prestwood, Hazlemere, Holmer Green and Terriers joined with us.

In May we shall be discussing this year's resolutions. These are submitted each year by individual WIs from around the country, shortlisted after discussion by County Representatives and then every WI has a vote at the National AGM. This year's topics are reducing supermarket food waste and also the care of dementia patients who are admitted to hospital for other medical issues. There will be lively discussion before the delegate is given her voting instructions.

And in addition to all of this we have our regular monthly meetings to look forward to as well as a jewellery making workshop in May, a visit to Nuffield place in the summer and various County organised events.

We are always happy to welcome visitors to our meetings on the first Thursday evening of each month to find out more about the WI. The National website is at www.thewi.org where there is plenty of information or e-mail us to ask any questions.

Tel: 488529 • speenwi@gmail.com

CLEAN FOR THE QUEEN

Gloria Holmes

Speen WI were proud to support the 'Clean for the Queen' national campaign on 5th March. The event was to help clean up some of the country's litter problem in time for the Queen's 90th birthday celebrations this year. A way of thanking her for her many years of service. The WI organisation was instrumental in the formation of the 'keep Britain Tidy' campaign, something that we should all support.

collected very speedily by WDC. Everyone worked very hard. Afterwards, the ladies of the village supplied tea and cakes in Speen village hall.

This could become an annual event now that the worst of the heavy rubbish has been cleared??

We were delighted that about 15 children and 25 villagers took part. The WDC provided litter pickers and purple sacks. The Rotary Club of Princes Risborough supplied yellow jackets. All the approach roads to Speen and North Dean, and the playing fields, were scoured by enthusiastic teams of litter pickers. Some items were years old. As well as general litter, there were smashed car parts, car wheels, a gear box, part of a vacuum cleaner, a sign to a Police Station, broken tiles, etc, etc. The total volume was amazing.

The results were piled up at the entrance to the Playing Field (see photo) and were



CLEAN FOR THE QUEEN

Continued

Saturday the 5th of March it was so fun doing "Clean for the Queen". It felt really good to clean up our village with my friends and lots of people I don't know. We have an Eco-Club at school and some of the club came along too. We went to Ridgeley's Field and the Bike Park and found bagfuls of rubbish. We didn't even know it was there until we started looking. Then we went up Grubbin's Lane.

We found loads of funny things like the sole of a shoe and a really old bottle! We thought it might be an antique. Then, when we had finished we put our bags at the playing fields. There was this really big pile of bags and I thought it was so good that we had cleaned up our whole village.

After the "Clean" we went back to the Village Hall and had scrumptious cake and yummy orange juice with all our friends. Thank you so much to Gloria for organising the day.

Rosie Regan age 6



Today I went to Clean for the Queen. I felt cold. I pointed out rubbish so that mummy and daddy could pick up the rubbish and put it in the rubbish bag. We went from the village hall down to Coleheath Bottom where I played on the swing while mummy and daddy continued to pick up rubbish. We carried on picking up rubbish past the Scout Hut then we went across the road and went up lots of steps into a field where some sheep were eating grass. Finally we went back to the village hall and had some cake. We went to the park to drop off our rubbish bags. I was amazed how much rubbish there was.

Ella Price aged 6



I really enjoyed seeing all my friends and collecting rubbish to clean Speen for the Queen. But sister said it was too stinky! We collected a lot of rubbish. It is a shame that people leave their rubbish behind for other people to pick up.

After we did the Clean for the Queen we went to the village hall for yummy cupcakes.

Amelie and Jessica Allan, aged 6 and 4



As the Clean for the Queen event was such a great success, as a thank you to everyone who took part, the leaders of each group were invited to a reception at the Palace of Westminster.

Many thanks for all your efforts and enthusiasm.

Photographs courtesy of Martin Hart

HAPPY & GLORIOUS!



SERVICE OF THANKSGIVING
IN CELEBRATION OF THE 90TH BIRTHDAY
OF QUEEN ELIZABETH II

SPEEN CHAPEL
11:00AM SUNDAY 12TH JUNE, 2016
LED BY REV. HEATHER MCINTYRE

SERVICE WILL INCLUDE
SINGING OF THE NATIONAL ANTHEM
AND A ROYAL TOAST TO HER MAJESTY



CHAPEL HILL, SPEEN BUCKS HP27 OSP
WWW.SPEENCHURCH.ORG



THE QUEEN'S
90TH BIRTHDAY
CELEBRATION

CELEBRATION TEA PARTY
FOR THE QUEEN'S 90TH BIRTHDAY

on
Saturday 11th June at 3pm
on the Speen Playing Field, immediately after FunDay

Come dressed Royally

Bring family and friends

Bring a teapot and a cup for your tea

Bring delicious food to share with your friends and neighbours

Tables provided - bring your own chair

Delicious cake, tea and squash available to buy at the Village Hall stall

There will be a raffle with excellent prizes and undoubtedly a rousing sing-a-long

The will be PRIZES for:

- **Best Decorated Table** • **Best Royal Lookalike** •
- **Best Child's Royal Birthday Card (which will be sent to the Queen)** •

See you there!

For more information or suggestions contact
John Holmes (488420), June Pilkington (488071), Lesley Thorn-Davis (488851) or Bill Groves (488180)

Undercover option if weather is bad. Proceeds from sales of teas and raffle towards the Village Hall upkeep.

FRASER-MORGAN SCHOOL OF DANCING

Naphill Village Hall

BALLET (R.A.D.) : Age 3+

MODERN / JAZZ (I.S.T.D.) : Age 4+

FOR MORE INFORMATION, PLEASE CALL

ELAINE TUCKER ON :

01494 816539 or 07974 121081

ROYAL ACADEMY OF
DANCE



Nelson Electrical Services

**Fully Insured
NAPIT Registered
Local Electrician**



No job too small
Free quotes given
No call out charge



Reliable and local service

www.nelson-electrical-services.co.uk

Contact **Michael**
07908 644058

Nick Higgins
Forestry & Fencing
Contractor

m. 07768 383418
t. 01494 488835

45 Great Hampden
Bucks
HP16 9RJ



Seasoned logs
available

HUGHENDEN PARISH COUNCIL



*Great fun and very
rewarding!*

*Healthy lifestyle, 150
calories burnt doing
just 30 minutes of
gardening*

*New friendships,
meet like-minded
people*

*Affordable, easy to
rent and makes a
positive contribution
to global warming*

ALLOTMENTS AVAILABLE IN HUGHENDEN PARISH

*Have you ever thought about growing your own
fruit and veg?*

*Hughenden is fortunate to have 8 allotment sites throughout the
Parish, and currently has some vacant plots (1/2 and full size)
at Cryer's Hill, Hughenden Valley, Louches Lane, North Dean,
Red Lion and Windmill Lane.*

*Allotments provide a unique combination of solace and sociability
and the Spring is a great time to start growing your own produce!*

*So if you want to get fit, grow your own veggies, or meet some
new friends, why not sign up for an allotment plot today!*

**FOR MORE INFORMATION CONTACT
HUGHENDEN PARISH
COUNCIL**

clerk@hughendenpc.org.uk
or 01494 715296

Full Plot: £25.00 pa
Half Plot: £13.00 pa



**SPRINGLINE
CARS** PRIVATE HIRE

- Airport Transfers
- Personal Service
- Events & Occasions
- Owner Driver
- London Trips
- Local Knowledge

RISBOROUGH

01844 27 44 74

Know the voice, know your driver



LET'S DECORATE OUR VILLAGE!

SPEEN VILLAGE FETE

SATURDAY 9TH JULY
SPEEN PLAYING FIELD
2pm



The theme for this year's Fete is **SCARECROWS**

Following the success of last year's Festival we want to dress the whole village with **SCARECROWS**, so let your imagination run wild, get creative and design your own masterpiece outside your home. Let's see who can create the best display and win the Best Dressed Scarecrow award and prize!
(Winner to be announced at the fete)

SPEEDINGUPDATE

Shelley Jennings

Reducing speed through our villages

You may have noticed local volunteers operating speed indicator radar signs in Speen and North Dean at various times over the last few months. This is part of a Community Speedwatch initiative, in conjunction with our local Thames Valley Police Road Safety Officer.

There is increasing concern about the speed at which some vehicles go through our villages despite the 30mph speed limit which seems to be ignored by a large number of drivers. We are lucky to live in thriving villages with many young families moving in. We have Speen school and the Pre-School, very few footpaths, no street lighting and, in the morning and late afternoon many children are walking to and from their school or bus stops, dog walkers are out in force and this appears to be the time when the volume of speeding traffic is often at its greatest. I think it is a fair assumption that traffic volume through our two villages can only increase. We live in an age of internet shopping which generates many more delivery vans and traffic volume will inevitably increase if HS2 goes ahead. However, I think it is also fair to say that offenders can also be closer to home.

The purpose of the Community Speedwatch initiative is to monitor the level of speeding through our villages with the eventual aim of gathering enough evidence to support applications to the respective Parish Councils to fund the installation of mobile activated speed signs – I'm sure you will have seen similar devices in many local villages. Experience elsewhere is that they make a significant difference.

The Community Speedwatch monitoring sessions register all vehicles travelling in excess of 35mph - this allows for the variable calibration on speedometers. All drivers registered at the excess speed will receive a letter from Thames Valley Police; further action is taken on repeat offenders.

Over the next few months there will be regular monitoring sessions and, in order to get a comprehensive overview of the speeding problem, the sessions will take place at different times of the day and in different locations in our villages.

If you are concerned about the problems of speeding in our villages, please do register your concern with your Parish Councillor and if you have any questions about this initiative or if you would like to volunteer to help at future speedwatch sessions please contact:

Speen – Shelley Jennings
shelley.jennings@btinternet.com

North Dean – Peter Keen
pkeen1944@sky.com

If you would like to help at the speedwatch sessions it would involve volunteering about 2 hours every couple of months.

Thank you to everyone who has given up their time to help with the sessions to date.

SPEEN GARDEN GROUP

Diary Dates

Wednesday 8th June

Visit to two beautiful gardens in Chalgrove, Oxfordshire followed by afternoon tea.

Meet 1.30pm in the King William IV Car Park

Cars to be arranged. Tickets: £12.00

Contact Jane Oury 01494 488317

or Daphne Westray 488742

Tuesday 5th July

Coach trip to the National Herb Centre in the morning followed by an afternoon visit to Broughton Grange nr. Banbury, with tea and cake.

Tickets £28.00. Limited spaces so book early!

Contact Marion Grimsdale on 01494 488722

or Catherine Butler on 01494 488412

SPOTLIGHT ON A LOCAL BUSINESS

Charlotte & Adrian Downing



Darvills Hill Farm, around for over 400 years, has been home to Farriers, Wheelwrights, Undertakers, Insurance Agents and an illicit pub. Now it is home to a small herd of Oxford Sandy and Black pigs supplying local customers with free range pork. OSBs or 'Sandys' are one of the oldest British pig breeds and if you asked a child to draw a pig, colour it ginger and splat it with black blobs, you would have a pretty good picture of one.

We are great believers that food should be locally grown using animals that have been well treated throughout their lives. Therefore when we started three years ago, our aim was to eat what we had grown and make available the slow matured pork to as many local people as possible at a reasonable price.

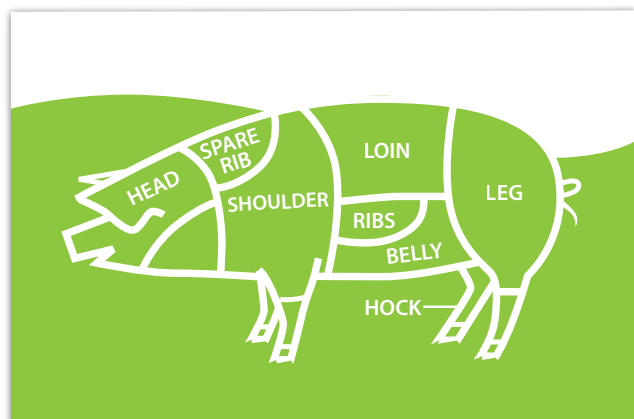
Over the short period that we have been going the challenges of the business have changed. Initially we had to learn patience, that nothing can be rushed and that in fact, it is the pigs who are in control. Pigs will eat as much

as you give them and will do what they want to, unless you bribe them with apples. Our answer was to plant an orchard.

Three years on, we have two different challenges. As local demand has increased we have found ourselves in the situation of 'family stand back' as nature does not always provide you with what your customers want nor when they want it. You cannot hurry OSBs into doing anything, especially maturing to the right size.

Secondly we have had to adapt to current food trends created by chefs such as Jamie Oliver and Hugh Fearnley-Whittingstall. The slow cook movement has created extra demand for Shoulder, Loin-on-the-bone and Belly instead of the more traditional Leg for a Sunday Roast. Instead of genetically modifying the pigs to have 4 front legs, we are now working with Chiltern Charcuterie (www.chiltern-charcuterie.co.uk/) to produce hams that are whole legs cured and then air dried for seven months.

If you would like to order some of our slow matured, fruit fed pork, bacon, gammon or sausages, please contact us at thepantry@darvillshillfarm.co.uk.



Flowers Bottom Lane • Speen • Bucks • HP27 0PZ
t: 01494 488078 e: thepantry@darvillshillfarm.co.uk

Geocaching

What can you use multi-billion dollar state of the art satellite technology for? Looking for tiny Tupperware boxes in the woods of course!!

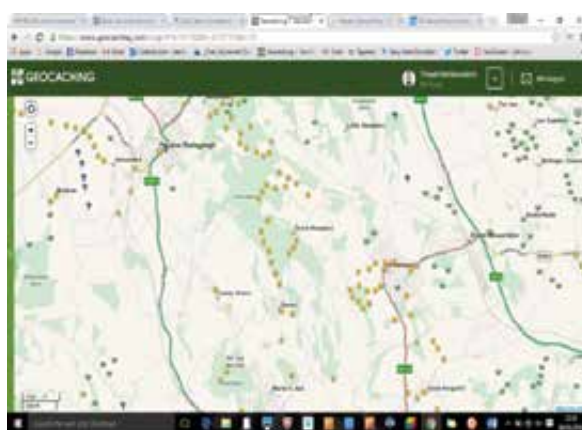
That's a really good start to explain Geocaching to the uninitiated. Another way is to say it's a treasure hunt using GPS; the 'treasure' is in a small box (if you are lucky) and once found it you sign the log book, put it back where you found it and carry on to the next one. There is no easy way to explain this hobby without people's eyes glazing over and saying 'Ok' and then changing the subject.

I have been Geocaching since 2011 and I have found 845 little (and not so little) boxes, mostly in Buckinghamshire but some in County Durham, Cambridgeshire, Dorset and the West Midlands. I have been to places in this area that I didn't know existed and have walked some beautiful paths. It is a lovely hobby that gets you out and about with a purpose in mind. If somebody asked me to go for a 6 mile walk I would look at them as if they were mad BUT if they said 'let's go for a 6 mile walk and there is the possibility of finding 20 caches' my reply would be 'let me load the GPS and where shall I meet you'. You don't need any special equipment for this hobby as all smart phones now come with a GPS and there are apps to download to help you on your way. I use an Android phone with an app called C:GEO which is free and shows all the caches in the world. I do also use a handheld GPS device which, if I am organised, I load with the details of the caches before I go out and use this to help me find them. I use both as the batteries last longer in the GPS but the phone is very useful to check the maps and any hints that may be given to help find it.

There are over 70,000 geocaches hidden around the UK so you will never be very far from one. The website www.geocaching.com has all the details and if you are in Speen there are two right here in the village. It is a free hobby as all you need is a subscription (free) to the website, a user name and a smart phone. I do pay to be a member of the site as there are some caches that are only open to 'premium' members and this enables me to see all that are around. I am currently working my way

around a set of caches called 'Aylesbury Ring' whilst doing others in between. This is a series of some one hundred and forty caches set along The Aylesbury Ring, a circular footpath that follows a thirty mile route round Aylesbury and I have about 49 to go until I have finished it. Once you have found the cache you log it on the website and get a smiley on the map. The biggest challenge is trying to be the first person to find the cache so you can log an FTF. I have logged 29 FTFs out of my 845.

My map looks like the one below. I have quite a few green boxes and question marks to go to turn this whole page yellow. The ones you can see over The Lee direction are part of a group called The Chiltern Hundreds as there are, you'll never guess, a hundred of them. They can be tackled all in one day or split into more manageable circles. Question marks are another aspect of Geocaching.



The people who own the caches don't want you to be able to just walk up and find it, you have to do a puzzle first. Some of these are quite easy and some are frustratingly hard. Some of them are challenges that you can't find unless you have fulfilled some other criteria. Some of these I am working on, others I will never fulfil so will always stay as blue question marks on my map (unless I hide them of course!!).

It's difficult to say which ones are my favourite as they all have good and bad aspects for all different reasons. It could be that a particular cache has brought me to a place that I have never been before, or it has a view that is breathtaking, it may be a puzzle that I solved to enable me to claim a find or just that I am out walking with a friend chatting about life with the added bonus of finding a few boxes. I have also met some lovely (and some strange) people who share the love of this hobby and we have a few get-togethers (which can involve cake) and talk 'caching. If you ever listen in it can seem like a different language but the thing we all have in common is that we enjoy walking around the countryside doing a hobby that is free, good for you and gives you a reason to get off the sofa and go for a walk. Also, if you have children they enjoy finding the bigger boxes and seeing what 'treasure' (tat) is in it that they can swap for something and take home (so you can throw it away within a week!!).

A PIGOTTS CELEBRATION

Nick Wheeler-Robinson

In 1963 my father and stepmother bought Pigotts Farm in North Dean from the family of Eric Gill who had lived in it from 1928. At that time I was a student in the USA and my stepmother and father both wrote to me about it. My stepmother described the beautiful setting, the road up the hill through the woods, the old farm buildings, the magnificent trees and the peace of the place. My father wrote of "the quadrangle of farm buildings, in pretty poor condition, but it could make a good home for Music Camp".

Both were right - and they bought it although there was no piped water, the roofs were unlined, there were windows missing and the gardens and orchard were overgrown with birch and brambles.

The Music Camp which my father had started in 1927, when he was a young researcher at Cambridge had, for the previous thirty years, been held in some rented farm buildings in Berkshire. Each summer for two separate weeks a hundred or so keen musicians came to Camp, to live simply and play classical music intensely. Chores and costs were shared, and no-one was paid - neither conductors, nor soloists, not even the cooks. These principles are still maintained. Music Camps have been a basis for many life-long friendships - and led to more than a few marriages. Second and third generation Campers now play a big part at Pigotts. This would have pleased my father, who after a lifetime organising amateur music, is now buried in Speen churchyard (next to Eric Gill).

In 1963 my father was close to retirement and had, with musical friends, made major improvements to the Berkshire site. However, one of the suggested routes of the M4 would have come very close by. Motorways and Music Camps don't mix - hence their purchase of Pigotts.

There was a lot to do to make Pigotts a home for the Wheeler-Robinsons and Music Camp. My stepmother had the necessary professional work done on the house,

while my father needed a barn big enough to hold a full symphony orchestra and chorus - neither of the beautiful 18th century barns (c. 20' x 40') were big enough. So in 1966 we built our new Main Barn (65' x 40'), entirely using volunteer and amateur labour, and set up a simple kitchen and basic 'bucket' loos for 120 people. The first Music Camp at Pigotts was held that same year.

Now Music Camp has been here happily for 50 years. This year we are celebrating over the August Bank Holiday weekend. Over 1,000 invitations have gone out to Music Campers young, older and very old. (Don't worry - they won't all come - this is not our first 'celebration' - we have already marked the 50th Year of Camp, the 100th Camp, the 125th Camp and in 2004 the centenary of my father's

birth). On the Saturday we shall celebrate The Past, on Sunday The Present, and on Monday The Future.

Over the last 50 years the Pigotts programme has grown busier and broader. This year there are occasions for groups interested in woodland archaeology, Polish Dancing, 'Oxford' philosophy, Eric Gill, primary school children for 'Forest School' (four afternoons a week), a weekly group of

artists, a D of E group from Wycombe Abbey, a monthly film evening, important 'working parties', as well as the thirty or more varied musical events - two offer free Sunday afternoon concerts in the Wycombe Festival.

Those who come to Pigotts for music appreciate the beauties of the Chilterns. They enjoy walking locally and even fit in a visit to The Gate occasionally. Local B&B's benefit when senior Campers come to find tents uncomfortable!

We don't do our music primarily for an audience and have always kept a low profile. (I hope these paragraphs will not get onto Google for instance.) This does not mean that local friends are not welcome to come and listen - on many summer Sunday afternoons there is a run-through of that weekend's music. Ring me for timings and details on 562167.

Painting by Annette Wolfsberg of my father building the barn in 1966



Hughenden Builders

Established 22 years

All Building Works Undertaken

- Extensions.
- Alterations.
- Loft Conversions.
- Roofing – all types.
- Drives, Block paving, Tarmac etc.
- Patios, Walls, Garden landscaping.
- Plumbing, Plastering, Carpentry.

Planning Service. Clear & Concise Plans

Single Storey £150.00

Two Storey £300.00

(plus council fees)

Free detailed estimate with drawing.
Planning fees returned if tender accepted.

171 Main Road
Naphill

Tel: 01494 562937
01494 438057

JOHN BISHOP

Est. 1972

GARDEN MACHINERY

Sales & Service



HONDA
LAWN & GARDEN



Machine Hire

Scarifiers, Cultivators, Strimmers, Mowers
Hedge Trimmers

Blade/Chainsaw Sharpening & shear grinding.

We also stock a wide range of parts for various products.

Free Collection & Delivery



Tel No. **01494 563513**

Mob. **07917 106004**

1 Margaret Cottages, Northdean, High Wycombe, Bucks, HP14 4NH

LJM ELECTRICAL

48 Aspen Court, Freer Crescent, High Wycombe, HP13 7YG

Fully Qualified Electrician

Full or Partial Rewires
Sockets
Indoor/Outdoor Lighting
Fuse Board Replacement
Showers
Fault Finding
Inspection & Testing

FREE QUOTES & FULLY INSURED

ELECSA

Part P
Approved Contractor

www.elecsa.co.uk

Call Lewis Mills: 07793 725554
Email: lewis@ljmelectrical.co.uk

M. R. COLLINS

GARDEN CONSTRUCTION

Est 1979

Driveway, Paving, Brickwork, Fencing
Groundworks, Excavations, Operated
digger hire.

We specialise in Block paving and all
types of slab laying Indian stone and
concrete offering a start to finish service
inclusive of excavations muck away,
supply and fix.

For estimate Phone: 01844 346360
Mobile: 07774 256732

WILDLIFEWATCH

Peter Symonds

Spring 2016

The winter period proved to be relatively mild, with no prolonged spells of hard weather that would normally drive lots of wildlife into our gardens. With regard to winter visiting birds George Butler reports two Bramblings in his garden in the middle of the village and I am aware of 4 at a garden in Walter's Ash. Small groups of Siskin have been reported and a pair has been present in our garden at the end of April. Few Redpolls have been seen this year.

Ravens have been recorded again over and around the village with sightings by myself, Alastair Blundell and Jeremy Symondson. Flocks of Jays, reinforced by wintering birds have been present in our woods with up to 8 birds seen together in College Plantation. Jackdaws are present around the village again and are using chimney nest sites again including a cottage in Studridge Lane.

Many birds have returned to regular nest sites around the village. Starlings have returned to houses they use each year whilst in our own garden Mallard have battled for use of a favoured nest site on the island on our garden pond. In the early months up to 10 adult birds would fight for dominance. By the end of February our regular breeders had re-established themselves and had started laying eggs. However in mid March a second pair started laying eggs in a second nest just 18 inches away with the two females regularly pinching the other's nesting material. After lots of squabbles matters seemed to have settled down but the second female then abandoned 12 eggs, but then started using a second nest in our front garden about two feet from our front door. The first clutch of 12 eggs hatched on

2nd April and we now have 11 well developed ducklings who have survived a couple of night time visits by a fox.

Foxes have their own young to feed at this time of year and often struggle to find sufficient food which forces them to hunt in daylight hours. Nevertheless a sighting of a fox on the green opposite The Harrow at midday on 14th March was unusual. Meanwhile Sooty, the black rabbit that lives in and around Woodview Drive and Abbotswood is still alive 12 months after he was first seen. Local Roe deer seem to be increasing in numbers in our local woods. Nevertheless they can be difficult to see being shy and very alert to human presence. However at dawn and dusk small numbers can be seen in the fields in several locations from Hughenden, North Dean and in Speen. Jeremy Symondson reported five in Gt Hampden.

However the best record from this period must go to David and Mandy How who identified and photographed a Wryneck in their back garden on 24th April. The Wryneck is a County rarity and would have drawn in birdwatchers from around the county if it had remained. The Wryneck is a member of the woodpecker family and feeds like a Green Woodpecker on ants in the grass and it has a liking for old orchards. If anyone else has seen this bird please let me know. I have provided a photograph below of the last one I saw at Wendover in 2010.

Please let me know of any interesting records for the next edition.



Tel: 01494 488016 • symonds@speen10.freeserve.co.uk

SPEEN HERITAGE GROUP

Clive Rainbow

We thought we had come to the end of this series of articles when, in one week, we came across two eye-witness accounts. One covered the battle in which the first of Speen's sons was killed, and, curiously, the other described how the last of them died. The first one was a Cpl in the 18th (Queen Mary's Own) Hussars. Being cavalry, they were among the first to transfer to France and - in their role as cavalry - were in action almost continuously from August 1914 until the traditional war of movement collapsed into trench warfare. Then, the inherent mobility of cavalry was exploited so that they could plug gaps in the front line - here, there and everywhere - until 13th May. On that day, half of them were destroyed in a massive artillery barrage that started at 03.30 and lasted for 7 hours. The shattered remnants were withdrawn to the rear but the situation around Ypres remained desperate, so reserves were rushed from Tidworth to make good their losses and the Regiment (now dismounted) was sent back into the trenches. The reinforcements arrived on the evening of 23rd May. On 24th May, the 18th Hussars were hit by a chlorine gas attack and ceased to exist as a fighting force. Speen's Cpl Harry Dean (6277) was amongst those who suffered a horrendous death.

In 1926 Brig-Gen Burnett CB CMG published a history of the Regiment from 1906 to 1922. He covered the period from the outbreak of WWI until the destruction of the 18th Hussars in fascinating detail. As well he might. As Lt Col Burnett he had commanded the 18th Hussars right up to the catastrophic 24th May. (The following day, Burnett - who had been gassed and wounded - was relieved of his command, and sent to a distant hospital, suffering from mental and physical exhaustion.) How could we put all his first-hand information into the standard essay that was expected for the next edition of the SNDN?

Then we came across an outstanding piece of research by Mr Steve Mosely. He tells the astonishing story of Syd Carlin, a Lance Corporal in the 18th Hussars, who was seriously injured in the carnage of 13th May - and therefore missed the destruction of 24th May - but went on to earn a commission

and fly, despite his wooden leg, with the RFC and, in WWII, with the RAF. Mosely gives a meticulous account of the progress of the 18th Hussars - up to 13th May - with such a superb range of quotations from such a huge number of sources (including, of course, Burnett) that we need only refer our readers to www.bbm.org.uk/Carlin2.htm. Mosely's narrative is not to be missed. What happened to the 18th Hussars in the first 10 months of WWI can serve as the model for the rest of the British Army. By May 1915, the

superbly trained, hugely confident, all-regular, British Expeditionary Force had been destroyed. With understandable reluctance, Britain adopted compulsory Conscription.

Harry Dean was born and brought up in High Wycombe. His father, having left school before the advent of the motor car, trained first as a blacksmith and then became a groom and then a coachman. That close association with horses might have caused Harry to enlist in the 18th Hussars - a crack cavalry regiment known as The Princess Mary's (later, The Queen Mary's) Own. There, he first appears as a trainee "Musician". As such, his primary role in wartime would be stretcher-bearer and general assistant to the Medical Officers. Mosely's account makes it vividly clear that - between August 1914 and May 1915 - Cpl Dean, and the 12-man team that he led, would have seen injuries more horrific than

anything that their training could have prepared them for and they would have dealt with several hundred dead and wounded men; comrades they had known for years.

The intense bombardment of 13th May was a massacre. Burnett says 'We had taken 12 officers and just under 300 of all ranks into the trenches on the night of the 11th, and in twenty-four hours we had lost half our strength.' Far worse was to follow. According to Burnett, on 24th May at 02.45 hours 'thick, low banks of yellowish-green fog' swept across their trenches. The Germans had released chlorine gas. Most men choked to death within minutes. The medics could do nothing for anyone - like Harry Dean - whose breathing was severely affected, but was unfortunately



SPEEN HERITAGE GROUP

continued

still alive. Soldiers at the front often gave their pals a drink of water to ease their fits of coughing; that was instantly fatal. When combined with chlorine, the water turned into hydrochloric acid. Harry Dean, was rushed by horse-drawn cart to No 3 Casualty Clearing Station at Bailleul. Today, by car, that would take no more than 30 minutes. He died, horribly, on 25th May. He was 21 years old.

In 1919, the Matron-in-Chief submitted a report on the work of the Casualty Clearing Stations. In one section she stressed the frustration felt by the medical staff in trying to deal with the victims of poison gas in 1915 'as every effort made seemed of no avail to relieve the suffering of the patients.' Continuing, she says: 'The hospitals at Bailleul were full, the grounds were full, and the fields around were full of patients gasping for breath, shouting out for drinks and unable to lie still on their stretchers. It was a dreadful experience for all.' Harry Dean's family were unlikely to have seen that report; we must also hope that they were given good warning before reading Wilfred Owen's Dulce Et Decorum Est.

01494 488658 • rainbows@speen.org.uk



Iconic (but ungrammatical) US Army poster.

LACEY GREEN PARISH COUNCIL

Roger Craft & Philip Suter, Speen representatives on Lacey Green Parish Council

Brief updates for Speen as follows:

Studridge Lane

At last after months of lobbying by residents and the Parish Council, the Highways Department of Bucks County Council have advised that repairs are going to be carried out to the road surface in Studridge Lane. The works are scheduled to be carried out in four phases between 13th June and 30th September. When the works are being carried out the road will be closed between 9am and 5pm.

Village Pond, Studridge Lane

Following discussions and recommendations from the Chiltern Society the pond is scheduled to be cleared on Saturday 8th October. Chiltern Society Volunteers will carry out the works but would welcome help from local residents. They anticipate to be there for a couple of hours, starting around 10.30am. It is intended to give further details/update nearer the time in the Village Messenger.

Speedwatch

Speed watch trials are continuing under the supervision of PC Turnham. We are indebted to Shelley Jennings for coordinating the list of volunteers to assist with these trials.

Once the trials have been completed and the records consolidated, we wait to hear from PC Turnham and the Highways Department in respect of recommendations for speed control measures, such as Vehicle Activated Signs (VAS)/Speed indicator Devices (SID).

The Parish Council will in due course seek to assist in finding finance for purchasing these electronic signs.

Speen Playground

Following detailed discussions with Speen Playing Fields Association, it is now in the hands of legal representatives to draw up a lease for the Parish Council to lease the playground. Leasing of the playground will allow the Parish Council to invest in new playground equipment, for which monies have been duly allocated. The Parish Council already lease under similar circumstances the playground in Lacey Green.

Roger Craft – rogercraft50@gmail.com - 01494 488343
Philip Suter – philip.suter@yahoo.ie - 01494 488540

ALLIED HEALTHCARE

As a population we are getting older and many of us will be faced with finding nursing or personal care for an elderly relative or planning our own future care if we become incapacitated. Bucks, residents are increasingly making a choice, where possible, of living in their own homes for as long as possible and the local branch of Allied Healthcare is aiming to make this option easier.

The local branch of Allied Healthcare has been operating for over 27 years, based just outside of High Wycombe, has a proven track record of providing domiciliary care in the community.

Increasingly there are fewer hospital beds and long term care homes that are accessible to those needing help, support and care, and most people, if given the choice, would prefer to be treated at home with their own possessions around them. We can offer a wide variety of Care calls from 15 minute pop-in call, once a day to multiple calls or indeed a full time Live In Care.

The offices of Allied Healthcare at High Wycombe are able to help with assessing your needs and advising on all aspects of your care. Before care starts you would be visited by our assessor to ensure that a comprehensive care plan was written and tailor made to suit the needs of the client. This can be for a basic care package to a more specialized and complex packages in the case of a serious illness. We will help you to consider whether you need a fulltime carer, perhaps a special bed or other equipment, or maybe additional carers at certain times of the day to help with lifting or turning. If needed you would have the advice of the 'In House' Trainer to advise on specialist Moving and Handling issues. Allied is willing to go the extra mile to provide the highest standards of care. They try to ensure clients build a relationship with a small team of carers rather than having a constantly changing set of faces. They recommend the use of a Keysafe which ensures a carer, can always gain access to a client's house to provide the care and raise the alarm if needed.

All of the Care workers are trained to the highest standard as required by our regulators, CQC and our stringent internal audit team. Many of our workers have training and expertise in specialist areas but if we needed to we would provide training to meet a specific need of a client.

If you would like more information about Allied and the services we offer then call 01494 488040, and we can meet with you for a no obligation visit or provide you with details and costings of our services.

Work for Allied Healthcare

We always have a need for additional employees to support the services we offer. If you are interested or know of a friend who is interested in joining us as an employee we offer an attractive package. We provide care across the High Wycombe and surrounding areas.

Care & support in the comfort of your own home

Do you or a relative require care or support to live your life the way you choose? If so, Allied Healthcare can help. We have been offering an excellent dependable service in the Buckinghamshire area for over 27 years.

SELF DIRECTED SUPPORT & PRIVATE CLIENTS WELCOME

Full assessments carried out before care commences. All our staff have extensive training and have enhanced CRB checks. We also offer call monitoring.

The range of services we offer

- Visits (1/4, 1/2, 3/4, HOUR)
- Live in/24HR care
- Holiday cover
- Waking nights/sitting
- Assisted bathing
- Light household duties & shopping



All about you

**For more information or assistance please call
01494 488040 / 01494 488141
Email: highwycombe@alliedhealthcare.com**

If you are interested in becoming a Carer or working with Allied Healthcare then please call the numbers above for more information and an application pack. Allied Healthcare is an equal opportunities employer and is regulated by the CQC. Allied Healthcare is committed to safeguarding and promoting the welfare of children, adults and young people and expects all staff and volunteers to share this commitment.



BEECHDEAN DOWN ON THE FARM

Gill Kent

After a very mild winter, spring has arrived and we are able to put animals out in the fields again. When you drive down through North Dean you will see the Hereford cows with their calves looking very happy in spite of the too frequent showers. The dairy herd is still in the barn as the ground is too soft to tolerate 1200 feet tramping on it daily ! The winter wheat has grown well and the land for the maize crop is ready for drilling; you might say all is well for farming, unfortunately this is not true. Like the steel industry, prices are too low to make a profit. Britain produces less milk than is needed for national consumption but because of the global market, prices are held down by overproduction elsewhere

Would we better off if we joined Brexit? Farmers are by nature very independent people; however, we have to remember that it is the French farmers who apply pressure to the EU commissioners by blocking roads and spraying milk on public buildings when things get tough. If British farmers behaved the same way they would be arrested or the Army brought in ! Agriculture is one of our country's smaller industries with a turnover of a mere £10 billion, so

it does not merit priority in government thinking (hence the last two ministers who were responsible for farming were sacked although both, for a change, were experts in the field !).

Since World War 2 successive governments (all over the world) have subsidised farmers in order to provide cheap food for the population. For many small and medium sized businesses this subsidy equates to their profit. If we leave the EU will our government continue with the payments? The idea of maybe a third of farmers going out of business does not bear thinking about. What would happen to the countryside and what would happen to cheap food ? We reluctantly feel that we must vote for Remain.

The micro chipping of all dogs is good news for farmers. If dogs are caught worrying sheep, their owners should be easily traced and prosecuted. Farmers are legally entitled to shoot any dogs caught worrying stock; the frequency of claims made to the NFU for animals killed or maimed by dogs sadly testifies to the size of the problem.



Reliable, Friendly Service
Taps, Leaks, Drains, Loos

Any Local Plumbing

Restoration to Renewables

Central Heating & Controls

Gas, LPG, Heat Pump & Electric

Registered for Gas and Electrics

Based in Upper North Dean

Paul's Plumbing
07786 175123

ELECSA
Part of the ECA Group

**Part P
Approved Contractor**

www.elecsa.co.uk

Local to Naphill, Walters Ash
Lacey Green, Speen, Hampden
Hughenden, North Dean



199757

Electrics - Bathroom, Heating, Etc.
Registered for Self Certification

Paul Newman Ltd. 01494 565573

NOTES FROM THE TOWN HALL

Graham Peart, Councillor for Lacey Green, Speen and the Hampdens

There is much activity in the town hall in creating the master plan for the future development of the wider Wycombe district. This will be submitted to the central government early next year and it will be the template and guideline for all development in the district.



The new sports centre, bus station and Waitrose are all open at last and with much acclaim and the old sports centre will have permanently disappeared from view by the time you read this to make way for an office block and a hotel.

The focus now is very much on the development of the plan for Princes Risborough which will see it double in size with over 2,000 new homes. And the appeal will be heard soon for a planning consent for the proposal to build over 200 houses on the old Molins site in Saunderton. Both of these large projects will inevitably impact on the vehicle movements through Speen and North Dean.

With this in mind, separate groups of volunteers have been busy recording the speed of traffic through Speen and Lacey Green; the preliminary results show that the majority of cars are travelling at above 35mph. The statistics are necessary

to get to the next stage before deciding on the appropriate measures to address the problem. This is a problem in all the surrounding villages and a solution needs to be agreed with the relevant authorities before an accident occurs.

Regarding broadband speeds in Speen and Great Hampden, a major issue as most surrounding areas have already had the benefit of an upgrade, I am optimistic that the Hampden Row exchange will receive an upgrade within the foreseeable future. It is not widely understood that the faster fibre connected broadband upgrades have been organised and part funded by Wycombe District Council on a phased roll out programme.

We are sad to see that the King William IV is now closed but hopefully a solution will soon be found to pave the way to enable it to be reopened as a pub and restaurant. Everyone is keen to see this lovely listed building serving local residents once again.

What projects would you like to see next in your village?

Tel: 01494 488327 • graham.peart@wycombe.gov.uk

HUGHENDEN NEIGHBOURHOOD ACTION GROUP

Tell the scam man to “scram”

Pensioners are becoming increasingly easy targets for fraud and are warned to be alert to the ‘get-rich-quick’ con man. This advice comes following a 25% jump in fraud cases over the past year. Accountancy group KPMG revealed that UK courts dealt with the third consecutive annual increase in fraud cases. It said fraudsters were increasingly using positions of authority to prey on ‘gullible’ investors, especially pensioners who were freed from the requirement to purchase an annuity and were desperately looking for places to invest.

Your bank will NEVER:

- Call or email you to ask for your full PIN or any online banking passwords
- Send someone to your home to collect cash, bank cards or anything else
- Ask you to authorise the transfer of funds to a new account or hand over cash
- Ask you to carry out a ‘test’ transaction online
- Send an email with a link to a website that asks you to enter your online banking details
- Ask you to email or text personal or banking information
- Provide banking services through any mobile apps other than the bank’s official apps
- Call to advise you to buy diamonds, land or other commodities



Care in your own home

None of us like the idea that we might lose our independence or dignity. At Universal Care we can provide the help that you require to continue having a dignified and independent life at home.

If you are considering either live-in or daily care for yourself or a loved one you can rely on us to provide friendly advice and help that takes into account each individual's different need. Our experienced Care Managers will be happy to talk to you or visit you at home to discuss your needs and to find out how we can help.

Call 01494 678811
or email care@universal-care.co.uk
www.universal-care.co.uk



UNIVERSAL CARE

always there



UNIVERSAL CARE

always there

Trudi Scrivener local Speen resident and Managing Director of Universal Care talks to us about Dementia and we can all help.

We do not really know what it feels like to live with dementia but there are 820,000 people who do. We may have watched a wife, husband, partner, parent or a friend living with this disease, or you might feel that this could be me one day. Just for a moment think what it might be like not to remember who you are, what to do next, who your husband or your children are, it can feel like being in a swirling fog. Sometimes things seem clear and purposeful, just as you remember, or at other times nothing seems clear. Only picking up fragments of conversation, and then it goes. You feel frightened, you look for reassurance, for familiarity but struggle, what should you do? Who will help you? Who do you tell?

The term dementia is an umbrella used to describe a set of symptoms that arise as a consequence of a variety of neurological diseases of the brain, the most common is Alzheimer's so this is probably what you hear most, at the same time we must remember each person suffering with this disease is experiencing it differently.

What can we do in society to help people suffering with this disease?

We can help the person to reach a state of 'contented dementia', we need to do this by removing the fear and replacing it with understanding, compassion dignity respect and reassurance.

Everyone suffering from dementia should feel that they matter, that they are loved and respected, they just happen to have a disease. Our caring needs to address their needs. we must go on this journey with them, we

do this by offering reassurance and care and making life simpler, removing stress but always empowering to remain as independent for as long as possible. We are helping some of the most vulnerable in society.

With our help, and that includes us all, we can ensure that no one suffering from dementia is patronised or belittled. What is needed is understanding, care dignity, stimulation and inclusion. In early stages of dementia we can help by a neighbourly watch, helping with shopping, or going to the post office. Later we can help by reliving memories of their childhood, it could be through seeing and hearing sights and sounds which are familiar, poetry, music and for us not to mind repeating conversations, (remember to the person with dementia it is a fresh conversation). We can help by spending thoughtful time with them and also by relieving a carer for a couple of hours to give them a break.

It is the most rewarding work when you see someone relax and enjoy the moment they are living, contented dementia can be found if we all help. People with dementia need tenderness and a hand to hold to cope with the disease.

At Universal Care we look at every individual and assess all their needs, which we constantly reassess through all the stages. We stay on that journey with them, we want our clients to enjoy their lives to feel there is still a purpose to living. It is against this criteria that we select and train our staff, to meet not just the person's physical needs but their emotional and social needs as well.

If you know somebody who is affected by dementia and needs help please get in touch today and speak to Trudi or her staff on 01494 6788811.

www.universal-care.co.uk

K. J. WINDOWS & DOORS

UPVC WINDOWS & DOORS

CONSERVATORIES

FASCIA & SOFFITS

BI-FOLDING DOORS

MISTED & BROKEN UNITS

REPAIRS

ALL WORK GUARANTEED

CALL KEITH: 07539 367200

Coles & Blackwell

Car Service & Repairs

Book online at:
www.colesandblackwell.co.uk

Quality car servicing and repairs
much closer than you think!

Where are we ? You will find us 300 metres down the small lane opposite the top of Bradenham Wood Lane in Walters Ash, High Wycombe HP14 4UX

Established in 1959



Servicing

Did you know you can get your car serviced by us without invalidating your manufacturers warranty? Legislation passed a few years ago means that you can now choose any garage of your choice to service your vehicle.

Courtesy cars

We have a fleet of new loan cars at your disposal whilst we service your own car or repair bodywork damage. Best of all - they are FREE OF CHARGE!
All part of the service you come to expect from Coles & Blackwell

air conditioning _____
mot testing _____
vehicle servicing and repairs _____
crash repairs _____
tyres, clutches & brakes _____
computerised diagnostics _____
batteries & exhausts _____

Open Monday to Friday 9:00am to 5:30pm
Saturday 8:30 am - 12:30pm

01494 563102



RISBOROUGH AREA COMMUNITY BUS

Our services to Princes Risborough run on Tuesdays and Saturdays

Depart Risborough High Street 0850, arrive Speen 0905, arrive Risborough High Street 0929

Depart Risborough High Street 1135, arrive Speen 1150, arrive Risborough High Street 1215

An afternoon service on Tuesdays only is available on request. Depart Risborough 1605, arrive Speen 1625, arrive Risborough 1649

The bus is available for Group Use evenings and weekends for up to 14 people. Our unique door to door service can be used for clubs, families & friends; for your own events or for sports, shopping, theatres and parties. Ring Georgina on 07941 963097 for information and bookings

We also run regular outings to places of interest including Garden Centres, Bicester Village and tours of the Chilterns. See our new website at www.racb.co.uk or call 07941 963097

VILLAGE ENVIRONMENTAL SERVICES DOMESTIC DRAIN SERVICES

Proprietors: Brenda Cook
Est. 1979

BLOCKED DRAINS?

FAMILY RUN BUSINESS SINCE 1979

BLOCKED DRAINS CLEARED

REASONABLE RATES

CCTV DRAIN SURVEYS

NO EXTRA CHARGE FOR EVENING, WEEKEND OR BANK HOLIDAY CALLOUTS

FULL PUBLIC LIABILITY INSURANCE

CALL US DAY OR NIGHT



07850 635 844 01296 624 221 (MESSAGES)



WHO'S WHO

Bucks County Council - Member for Lacey Green	Carl Etholen	01494 564771
Hughenden Parish Council - Chairman	Roger Beavil	01494 715296
Lacey Green Parish Council - Chairman	Cathryn Davies	01844 342800
Lacey Green Parish Council - Councillor for Speen Ward	Roger Craft	01494 488343
North Dean Good Neighbours	Judith Broadley	01494 563178
North Dean Village Hall - Bookings Secretary/Fete	Jez Wicks	01494 563517
North Dean Village Hall - Secretary	Alison Kent	ath@bfarms.co.uk
Pigotts 7 '48' Musical Evenings	Nick Wheeler-Robinson	01494 562167
Riding for the Disabled	Gloria Holmes	01494 488420
Speen Good Neighbours	Pat Richardson	01494 488627
Speen & North Dean Guides	Pauline Hall	01494 488372
Speen & North Dean News - Advertising	Tom Dent	01494 488943
Speen & North Dean News - Chair	Gloria Holmes	01494 488420
Speen & North Dean Toddler Group	Laura Chapman	
Speen Baptist Church	Rev. Heather McIntyre	01494 488067
Speen Fete - Chair	Amanda Dobbs	01494 488887
Speen Helping Hospices - Secretary	Maureen Laing	01494 488397
Speen Marquee	Greg Cook	01494 488939
Speen Playing Fields - Chairman	Tony Bobroff	01494 488688
Speen Pre-School Chair	Helen Davies	01494 488847
Speen School - Head	Denise Nayna	01494 488321
Speen School PTA - Chair	Clare Morris	01494 488553
Speen Stores	Alison Templeman	01494 488258
Speen Tennis Court - Secretary	Philippa Lane	01494 488453
Speen Village Hall - Bookings	Sue Taylor	01494 488500
Speen Village Hall - Chairman	Bill Groves	01494 488180
Speen WI - Secretary	Jean Morris	01494 488529
Wycombe District Council - Member for Lacey Green & Hampdens	Cllr. Graham Peart	01494 488327

BEECHDEAN

Farmhouse Dairy Ice Cream

Made from fresh Jersey milk
and rich double cream

Ice Cream for Every Occasion!

- Made Fresh on the farm
- No artificial colourings or additives used
- Suitable for vegetarians
- Gluten free



Beechdean Dairies, Old House Farm, North Dean, High Wycombe, Bucks HP14 4NL
01494 563980 | www.beechdean.co.uk



@BeechdeanGroup



Beechdean Group

A photograph of a garden path made of light-colored gravel, leading from the foreground into the distance. The path is flanked by a low, neatly trimmed green hedge on the left and a large, arched trellis covered in climbing roses on the right. The roses are in full bloom, with many red and pink flowers and some white ones. In the background, a white building with a glass door is visible through the foliage.

Homes of Distinction

If you are looking for a very special property or have one that would benefit from our award winning marketing then we are ready to act on your behalf.

01844 343131
Princes Risborough Office

01494 711677
Hazlemere Office

FINE & COUNTRY
fineandcountry.com™