



Issue 63
Autumn/Winter 2015



Speen and North Dean News



Editor: James Hazeldine

Advertising: Tom Dent

Production: Jude Awdry

Committee:

Gloria Holmes – Chair
Megan Chinn
Nick Wheeler–Robinson
Julie White

Printer: PK-Inprint Ltd
Tel: 01494 452266

for simply beautiful gardens



garden design
construction
planting
after-care

www.alchemille.co.uk
01494 488072 / 07909 936718

Contents

What's On	4
Letters	7
Speen FunDay	10
Speen Fete	10
Down on the Farm	13
Speen WI	15
Speen Heritage Group	17
Speen School & PTA	19
Wildlife Watch	21
Care and Support and You	22
Speen Village Hall	22
Hughenden Parish Council	22
Golf Wanderers	23
Speen and North Dean Golf	23
Marjorie Jean Ridgley	25
Message from SNDN Chairman	25
Speen Pre-School	27
Speen Church Youth	29
Speen and North Dean Toddler Group ..	31
Help for Heroes Fete	31
Speen Helping Hospices Group	32
Who's Who	34

Speen and North Dean News

Do you ever need an extra copy? Further copies are available at a cost of £1. Please contact Gloria Holmes on 488420.

NEXT EDITION

Copy for the next edition (64) is due by **14th November**.

The planned publication date is during **December**. Please send photos separately from text, together with captions and a consent form (download from the SNDN website www.speenbucks.org.uk) if any of the photos are of children.
Send to editor.sndn@speenbucks.org.uk.

Front cover: The 4 lead riders of the Aviva Women's Tour passes through Hampden Road/Bryants Bottom Road junction on 21st June 2015. Photo © David Flynn.

Index of Advertisers

A Cut Above	24
Alchemille Garden Design	2
Allied Healthcare	26
Beechdean Farmhouse	35
C.G. Tree & Garden Services	20
Christine Dunnington	20
Coles & Blackwell	28
Fine & Country	36
Fraser-Morgan School of Dancing	14
Hamptons International	8
Heppelthwaite	9
Hughenden Builders	14
Independent Living Consultants	18
JML Training Consultancy	12
John Bishop	21
Judith A Newenham	24
K J Windows & Doors	18
LJM Electrical	28
M.R. Collins	28
MWH Interiors Limited	5
Natalie Jane Dance School	15
National Energy Foundation	14
Nelson Electrical Services	31
Nick Higgins	13
Nicki Thomas Web Design	24
Painted Kitchens	32
Paul Newman Limited	16
PK-Inprint Limited	18
Premier Architectural Joinery	8
Risborough Area Community Bus	30
Risborough Carers Limited	6
SB Professional Painting & Decorating ..	30
Speen Stores	20
Springline Cars	27
Taps UK	23
Village Environmental Services	12

Month	Event	Where	Contact
September			
Thursday 3 rd	WI. The Magic of the Rainforests	Speen Village Hall 7.45pm	Jean Morris 488529
Saturday 5 th	North Dean Fete	North Dean Field 2.00pm	Andrew Howard 562775
Saturday 5 th	Festival Décor W/Shop	Speen Village Hall 6-8pm	
6 th -20 th	Speen Festival	View programme at www.speenfestival.org	
Wednesday 9 th	Men's Philosophical Society	George, West Wycombe 8.30pm	Graham Peart 488327
Saturday 12 th	Great Hampden Village Show	Great Hampden Village Hall	Hilary Reid 488611
Thursday 17 th	Walk the Speen MS Mile	5x round Speen Playing Field	Sharon Deacon 01296 696133
Sunday 20 th	Marquee striking	Speen Playing Field	Greg Cook 488939
Tuesday 29 th	Speen v North Dean Golf	Harleyford Golf Club	Charlie Pearson 488483
October			
Thursday 1 st	WI. My life as a Bird Vet	Speen Village Hall 7.45pm	Jean Morris 488529
Sunday 11 th	SHG + WI Oral History Project	Speen Village Hall 2.00pm	John Radford 488679
Wednesday 14 th	Men's Philosophical Society	Whip, Lacey Green 8.30pm	Graham Peart 488327
Friday 23 rd	Film & Supper Night	Speen Village Hall 7.30pm	June Pilkington 488071
Saturday 31 st	RDA Swing Band	Speen Village Hall 7.30pm	Gloria Holmes 488420
November			
Saturday 7 th	Speen Bonfire Night	Speen Playing Field	Tony Bobroff 488688
Friday 13 th	Theatre in the Village 'Victor and Albert'	North Dean Village Hall	Jez Wicks 563517
Saturday 28 th	Christmas Bazaar	Speen Village Hall 2.00pm	Bill Groves 488180
December			
Friday 4 th	Christmas Tree/Carols	Speen Playing Field	Tony Bobroff 488688

During the intervening months between this and the last issue, the village, as usual, has had plenty of great events. Hopefully they've all been covered in this issue. If they haven't, then make a note to submit your copy and photographs when you next hold an event.



As Autumn approaches we all have more events to look forward to including the Festival, which I think will be in full swing as this magazine is delivered, firework night, the craft fair and much more.

So, I now hand over the baton to a new editorial and production team in the shape of Jacqui Laing on production, with the new editor to be confirmed, and wish them all the best for the future.

James Hazeldine

After three years, when I was first "volunteered" by Gloria Holmes to edit the magazine, this will be my last issue. I would like to take this opportunity to thank all the contributors, especially the "regulars" and Gloria for all she does to remind people to submit copy and in arranging the distribution. In fact I'm not sure there's an activity or fund-raising event that would happen without her.

Also, a huge thanks to Jude Awdry for the hard work in doing all the layout and production and to Tom Dent for efficiently handling the advertising sales and administration.

Welcome Packs

Speen's 'Good Neighbours' scheme was set up many years ago and is now run by Pat Richardson. One service is to provide new residents with a Welcome Pack of village information.

If you know of someone new to Speen please phone Pat on 488627.

New residents to North Dean should phone Judith Broadley on 563178 or email cooljude@btopenworld.com



design • refurbishment • construction



- Interior building work and alterations
- Bathroom design and installation
- Kitchen design and installation
- Full property renovations
- All work covered by comprehensive insurance and full guarantee

t: 01494 488002
m: 07866 738829

mwh | interiors

www.mwhinteriors.co.uk info@mwhinteriors.co.uk
Hayton Cottage, Flowers Bottom Lane, Speen, Princes Risborough, HP27 0PZ



Risborough Carers Ltd

Compassionate Care in your Home

Risborough Carers are your local private family run Home Care Provider based in Thame, Oxfordshire. We passionately believe in promoting Client's dignity, privacy, safety, independence and choice.

23 years' experience of excellent service from our professional and highly trained staff.

Registered and Compliant with Care Quality Commission.

01844 212 271

www.risboroughcarers.org.uk

Services provided:

- **Personal Care**
(including assistance with morning wake up/bedtime tuck up routine, bathing/dressing, medication reminders)
- **Specialist Care**
(including Dementia, Alzheimer's, Palliative Care)
- **Companionship Services**
(including accompanying to appointments with shopping, eating out and other social outings, take part in hobbies and crafts)
- **House Keeping Services**
(including light housework, laundry, meal preparation)
- **'Live-In' Care** – a highly trained companion who will stay with you 24/7

1st Floor ♦ 1 Thame Business Centre ♦ Wenman Road ♦ Thame ♦ Oxon ♦ OX9 3XA

Letters

Sir

Safer Routes For Horses is now Hampden Safer Routes for Horses Bridleways Association

Four years ago Val Firth (from Great Hampden) and I worked with The Hampden Estate to establish some off road routes for riders to avoid some dangerous sections of local roads. As the result of the ongoing sale of some of the Estate woodlands these routes are no longer available.

We decided that rather than shrug our shoulders and give up, we and the other members of SR4H would re-establish the group as a bridleways access group, affiliated to the British Horse Society. This gives us access to expertise regarding rights of way, and insurance when clearing obstructions.

We held our first "working party" earlier this year, when 20 members cleared fallen, rusty wire from sections of the bridleway through Monkton Wood and cut back obstructions along its length from the Hampden X-roads to its junction with Highwood Bottom. In only 2 hours the route was opened up and made safe for all users.

We have another working party planned for the end of August to clear dangerous wire on the tracks at Denner Hill.

We are now working with the Estate to establish another horse track, to avoid yet more unpleasant sections of road and link 2 existing bridleways.

Whilst Bridleways are open to all walkers, riders and (since 1968) cyclists, the permissive tracks will only be open to paid up members of the group. With a subscription of £10 per year it is hardly expensive!!! The money covers insurance for the group's activities, signage and payment to contractors where heavy machinery will be needed. Incidentally, the insurance does NOT provide 3rd party cover for riders, only working parties.

Details of our activities, working parties, plans for the future and our enthusiastic committee members can be found on our website: hsr4hba.zohosites.com.

Now that I have your attention(!!) I'll take this opportunity to remind everyone (especially motorists) of the need to take great care when

meeting horses on the road. The recommended maximum speed (by the AA, Thames Valley Police and the British Horse Society) for passing horses is 15 mph, and be prepared to stop if need be. You will only lose a few seconds, but if half a ton of startled horse lands on your car bonnet, you may lose considerably more!

*Jackie Edwards
Woodstock
Coleheath Bottom
Speen*

* * *

Sir

I am appalled and fearful in equal measure at the savaging and subsequent death of a young breeding ewe on Moses Plat Farm. My children and I have five pet sheep which have been frequently grazed in Speen in fields through which run public footpaths. These sheep have been hand reared and would be like lambs to the slaughter if a dog attacked them.

I urge all dog owners to keep their dogs on a lead when going through fields with sheep or other livestock in them. However lovely a dog may be, the natural instinct to chase can soon take over and what seems like play can result in tragic consequences.

*Charlotte Burton
Bohemia
Speen Road
North Dean*

* * *

Sir

How sorry I was to see the lovely avenue of Horse Chestnut trees at The White House chopped to the ground.

When Major Caldwell lived there in the 40s several of us village children used to creep down the drive to collect the fallen conkers and hope no one would catch us!!!!

If we had known the new owners were planning to do this perhaps we could have arranged to get a preservation order on them - now it is too late, how sad.

*Catherine Butler
Rose Cottage
Hampden Road
Speen*



Premier
Architectural Joinery



Conservatories



Bi-Fold Door Sets



Doors and Porches

Premier Architectural Joinery Ltd

Ladymead Farm Estate
Quainton, Nr Aylesbury
Buckinghamshire
HP22 4AN

T - 01296 655555 Opt 6

E - u2us@premieraj.co.uk

W - premieraj.co.uk



Hardwood Windows



Gates



Roof Lanterns

Traditional Hardwood Joinery with a modern approach - free advice!

Show us your home
and we will show
you the buyer.

Because it's important to you.

01494 611382
www.hamptons.co.uk



Beyond your expectations

Heppelthwaite

Green Building Solutions

It now pays to go **GREEN!**



You could qualify for the RHI (Renewable Heat Incentive/Ofgem) Contact us now for hassle free advice and a **FREE** estimate

We specialise in providing bespoke renewable energy solutions ensuring you receive the best savings, cash returns and reduction in carbon emissions.

Got an Oil boiler? Now is the best time to **change to Biomass**

For an information pack please contact us on:



01628 533 550

or visit our website

www.ecogreenbuildings.co.uk

Heppelthwaite Green Buildings is part of the Evans Group.
A family run company specialising in Plumbing & Heating since 1948.

Speen FunDay

Fare Thee Well, FunDay 2015 . . . The Highland Games Draw to a Close

Highland Games Indeed! And, in keeping with our theme, we were blessed with a typically Scottish mid-Summer's day, Heaven-sent from the North Face of Ben Nevis.

Undeterred, we pressed on and rightly so, for we were to be duly rewarded. From my countless vantage points between not winning Messie Nessie, not winning Highland Relay and not winning Whisky Galore, fun was being had in all quarters.



After all the hard-fought contests that struck perfect balance between chaos, gamesmanship (cough, cough) and even the occasional burst of friendly rivalry, the BLUE TEAM emerged



victorious under the steely-eyed, characteristically focused captaincy of Nic O'Brien. WELL DONE TO THE BLUE TEAM!

Kiddie Kurling Kup was secured this year by Ms Mabel Daw who, having tapered her training to perfection, posted a record distance, executed



Speen



with nigh-on perfect poise. Mabel was the worthy recipient of the prized trophy, presented by outgoing champion, Ms Olivia Davies. Great spirit from all competitors and Big Rispekt to the Kurlers & Sweepers (who, for legal reasons, shan't be named in print).

Special mentions in despatches for:

Geoff 'The Ref' Smith – no rule unknown, no foul unseen;

Tony 'Everywhere' Bobroff – a giant of the village, only smaller;

Andy 'Caledonian Consultant' Thompson – Aberdeenshire Granite, powered by oak aged anger.

Dilly & Team at the King Bill: Thanks for your continued support (and chips), provided with unique, inimitable style.

The plaudits just keep on coming:

Enormous thanks, as ever, to the SPF Committee and usual selection of village volunteers. A notable milestone for the diversity panel, overseeing a yellow team led by a female captain (whatever next!), often while wrestling with a



toddler. Well done Cat The Cook (and Toby).

A Final Thank You . . . to Funday stalwart Pete Symonds, especially so for the engineering feat of Whisky Galore. I hear work has already begun on a follow up, rumoured to feature a full-sized, working replica of the Large Hadron Collider.

So, until the next time on the Bonnie, Bonnie Banks of Speen . . .

Get Tae Fun!

Matt Davies

n Fete





A bespoke management training and coaching company established in 1997, working in the private and public sector.

Recognise and capitalise on your potential

Do you need to give yourself the space to broaden your thinking, further develop your skills, confidence and competence in today's demanding environment?

We offer a coaching service that is confidential, flexible, targeted to meet clear goals and expand your skills base. We provide objective executive coaching that will support your professional, business and personal development.

In-house training

Maximise the level of talent skills and performance in your organisation. We specialise in the design and delivery of practical, interactive and results focused in-house training. Let us help you develop your people.

Check out our website at www.jml-training.com
or call us on **01494 488787** for further information

VILLAGE ENVIRONMENTAL SERVICES

Proprietor: Dennis Cook

**BLOCKED DRAINS CLEARED
REASONABLE RATES**

**NO EXTRA CHARGE FOR EVENING,
WEEKEND OR BANK HOLIDAY CALL-OUTS
24 HOUR POLITE, COURTEOUS SERVICE
C.C.T.V. DRAIN SURVEYS**



Tel: 07850 635 844 between 9am-6pm
01296 624 221 at all other times
Fax: 01296 620 222



Full Public Liability Insurance

DOMESTIC DRAIN SERVICE

Down on the Farm

Scientists have warned us that climate change would mean more extremes of weather and I think this year is proving them correct. After a very late spring, April was hotter than usual and May and June colder than usual. July was very hot and dry. These conditions, coupled with heavy infestations of numerous species of bugs, have resulted in poor growth for many crops.



The poorest Chiltern land growing grass

After the weather (and forgetting about diseases) the soil type is the biggest influence on crop yield. In East Anglia, due to the Grade 1 soil type in many locations, farmers have made their fortunes growing vegetables and cereals. Here in the Chilterns however, many of the soils are Grade 3 - and only suitable for growing grass. Even on the tops of the hills where there is a clay cap and in the valley bottoms, yields of cereals will be about 30% lower than those in East Anglia. From the economic point of view the cost of renting land is directly proportional to its fertility, but as you all know, in leafy Buckinghamshire the price of land to buy is artificially high because investors regard



Better Chiltern land growing cereals



Strawberry growing in Kent

it as having 'hope value' being so near London. No farmer can buy land, whatever grade, with the idea of getting a return from 'farming' it.

We recently visited a fruit farm in Kent which produces strawberries for the super markets. Acres of land were covered in polythene tunnels under which the plants were grown in a synthetic medium, in beds built at waist height for easy picking. Water and nutrients were provided as needed by a computer controlled system. It seems that more and more acres of these tunnels will be erected as they keep the warmth in the ground and prevent any damage by rain, hail or birds. These systems have evolved because the general public will not buy fruits or vegetables with any blemishes on them. This begs the question, in future, will we be needing soil to grow our fruit and vegetables?

The plight of small dairy farmers is again in the news. The large 'factory' dairies will no doubt survive but it is the smaller herds which graze the pastures and contribute to maintaining the environment which we all like, which will disappear. The general public must decide whether they want cheap milk or the landscape for which our country is renowned.

Gill Kent

Nick Higgins
Forestry & Fencing
Contractor
 ☎ 07768 383418
 ☎ 01494 488835



Seasoned logs
available

45 Great Hampden
 Bucks
 HP16 9RJ

Does the thought of your
next heating bill leave you

c^{old}?

It is recommended that your home is heated at 18°C (65°F).

Place this card in your living room or bedroom to see what temperature you're at.

As the price of fuel increases, energy bills can
become unmanageable.

To ensure your energy bills are kept under control or for advice on keeping
warm, call the Affordable Warmth Helpline. We give free, impartial advice on:

- Reducing your energy bills
- Heating your home affordably and efficiently
- Advice and assistance with switching energy supplier
- A free talk for your group

Some improvements, such as wall insulation or boiler replacement can take
a few months to install, so don't wait until it gets cold to contact us;
we're here for you throughout the year!

Do not place this card near a heat source or in direct sunlight.



@AffordWarmth



Affordable Warmth



NATIONAL
ENERGY
FOUNDATION

Telephone: 0800 107 0044

email: awn@nef.org.uk

Hughenden Builders

Established 22 years

All Building Works Undertaken

- Extensions.
- Alterations.
- Loft Conversions.
- Roofing – all types.
- Drives, Block paving, Tarmac etc.
- Patios, Walls, Garden landscaping.
- Plumbing, Plastering, Carpentry.

Planning Service. Clear & Concise Plans

Single Storey £150.00

Two Storey £300.00

(plus council fees)

Free detailed estimate with drawing.
Planning fees returned if tender accepted.

171 Main Road
Naphill

Tel: 01494 562937
01494 438057

FRASER-MORGAN SCHOOL OF DANCING

Naphill Village Hall

BALLET (R.A.D.) : Age 3+

MODERN / JAZZ (I.S.T.D.) : Age 4+

FOR MORE INFORMATION, PLEASE CALL

ELAINE TUCKER ON :

01494 816539 or 07974 121081

ROYAL ACADEMY OF
DANCE



Speen WI

Speen WI members have had a busy summer. Margaret Hancox

represented them

at a Garden Party

at Buckingham Palace, hosted by HRH The Duchess of Cornwall and attended by other members of the Royal Family. 8000 WI members from all over England and Wales converged on London for this event to mark the Centenary of the WI movement in England and Wales.

In the same week, Jean Morris acted as delegate to the Annual Meeting held at the Royal Albert Hall. This also had Royal Patronage with Her Majesty the Queen opening the meeting and cutting a celebratory cake. Accompanying her were their Royal Highnesses the Princess Royal and Sophie, the Countess of Wessex. All three are WI members.



their regular monthly meetings and have also been on a visit to see a production at Wycombe Swan Theatre.

We continue to meet on the first Thursday of each month in the Village Hall at 7.45pm and if a slice of all this appeals to you, please pay us a visit.



Jacqueline King puts the finishing touches to the plastic floral arch

Jean Morris
488529

speenwi@gmail.com



l-r Sheila Abbott, Gloria Holmes, Mary Dawson and Barbara Collett enjoy the WI Centenary Garden Party at Waddesdon Manor

Closer to home, Waddesdon Manor was the venue for a summer Garden Party in honour of the 100 years. The sun shone, the band played and members explored the stalls and the grounds.

At Speen fete, there was a display of Craft by members and also a 'Floral Arch'. For this, more than a hundred flowers had been made from plastic carrier bags and when wired to the framework looked beautiful. This is being reconstructed on the Village Hall gateway arch for the duration of Speen Festival. Members have also been collecting materials ready for the Railway Children collage making morning, which is being organised with Speen Pre-School.

As well as all this activity, members have enjoyed

**BRAND NEW DANCE CLASSES
IN LACEY GREEN!**

Bumble Ballerinas and Tiny Tappers
Ages 2-4

Ballet (various grades)
Ages 5-11

Stretchi-Flexi
Ages 5-11

FREE TASTER CLASS!

Natalie Harris (principal)
07855 296242
natalie@njdance.co.uk
www.njdance.co.uk

Reliable, Friendly Service

Taps, Leaks, Drains, Loos

Any Local Plumbing

Restoration to Renewables

Central Heating & Controls

Gas, LPG, Heat Pump & Electric

Registered for Gas and Electrics

Based in Upper North Dean

Paul's Plumbing
07786 175123

ELECSA
Part of the ECA Group

Part P
Approved Contractor

www.elecsa.co.uk

Local to Naphill, Walters Ash

Lacey Green, Speen, Hampden

Hughenden, North Dean



199757

Electrics - Bathroom, Heating, Etc.
Registered for Self Certification

Paul Newman Ltd. 01494 565573



Artie Ralph Bristow



We feel we have come to the end of this series of essays about the 10 men whose names are recorded on the WWI memorial at the Chapel; it is a pity that

no one attempted this project in the 1950s when so many members of the major Speen families were still living in the village. We have, however, found some more information about Artie Ralph Bristow. Indeed, we now know more about him than any of the other WWI casualties.

In Issue 55 of the SNDN we explained that another researcher had kindly sent us Artie Bristow's service records. (They are very rare; most WWI service records were destroyed in the London Blitz). The medical details that we found in the Army records explained why he died, after the War was over, age 22. In that biography, we wondered about his unusual first name. His father, Albert Bristow, definitely entered his son on the 1901 Census form as "Artie" but the enumerator overwrote that to read "Archie". (His parents had also registered his birth as "Artie".) In Bob Johnston's Archives, which, thankfully, are still preserved at the Chapel, we saw that an Archie Bristow was enrolled in the Village School as pupil number 403. Artie was enrolled as number 406. We wondered whether both boys were born about the same time, in different branches of the extensive Speen family of Bristows, and, to avoid confusion, his parents ceded the more obvious name to the other, possibly older, child. We searched again and found that when the 1911 Census was taken Archibald Charles Bristow was 13 years old; Artie was 12.

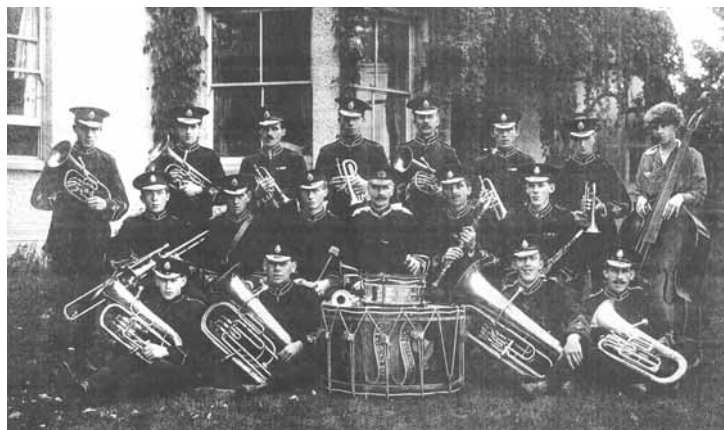
Artie was conscripted into the Army in November 1916, shortly after his 18th birthday. He was demobilised, his health broken, in November 1919 and died, in Woodbine Cottage, the family home, in October 1920.

The Chapel records say that on 3rd January 1916 he had requested Baptism. By that time, he probably knew that The Derby Scheme – a last minute attempt to recruit volunteers for the Army – had failed to produce sufficient numbers, and that Conscription, for men aged 18 to 41, would be introduced. We can imagine that, over Christmas, he had thought about this. However, we should also appreciate that requesting Baptism when he was 17 years old was not unusual. Baptists do not practice Baptism for infants. They consider Baptism to be an adult's decision.

Archibald Charles Bristow and Artie were both in the Machine Gun Corps. At the end of the War, Archie was a Corporal, Artie was a Private. Did those two boys from Speen ever serve together?

Another cousin, Dudley Frank Bristow, recently demobilised, registered Artie's death. In Issue 62 of the SNDN we described the fascinating postcards that Dudley Frank (always known as Dick) sent home, almost every day, when the War was over. Even though he simply addressed them "Mrs T Bristow, Speen" etc, they usually arrived within three days.

There is a photo in **The Leaves of Time* of the Speen Brass Band, resplendent in their brand new uniforms. The photo was taken when the Brass Band reformed after the War. In the back row is Dick Bristow, third from the left, with his neat moustache.



Members of the Speen Band (c. 1920).

From left to right:

Back row: 1. Ted Floyd, 2. Roy Bristow, 3. Dick Bristow, 4. Will Floyd, 5. Fred Plumridge, 6. Arch Bristow, 7. Ted Ridgley, 8. Elsie Plumridge.

Middle row: 1. Will Bristow, 2. Norman Ridgley, 3. Bert Tilbury, 4. William Plumridge, 5. Ted Bristow, 6. George Dean.

Front row: 1. Harold Mead, 2. Archie Janes, 3. Harold Gibbons, 4. Jack Bristow

Archie Bristow is third from the right. Both are wearing their WWI campaign ribbons – as is George Dean, middle row, far right. Can anyone tell us if this George Dean is the younger brother of Corporal Harry Dean, who was the first Speen man to be killed in The Great War?

The Chapel has a register of burials. Artie Bristow's grave is recorded as No 14 in row H; there is no trace of it today. Whoever maintained the register entered his name as Arty.

Clive Rainbow
01494 488658
rainbows@speen.org.uk

* Copies of *The Leaves of Time* (revised second edition) are now available from the Speen Heritage Group for £5.

Every household should have this fascinating history of Speen – it is essential reading if you have just arrived in Speen, and will also make a delightful present for anyone who has moved away.

Contact Peter Symonds 01494 488016 or
symonds@speen10freereserve.co.uk.



Printers of Speen & North Dean News

**DESIGN, ARTWORK
DIGITAL & LITHO PRINT**
all under one roof

8 Wycombe Industrial Mall
West End Street
High Wycombe
Buckinghamshire HP11 2QY

T: 01494 452266

F: 01494 452216

E: mail@pkinprint.co.uk

W: www.pkinprint.co.uk

Newsletters

Leaflets

Programmes

Brochures

Folders

Labels

Stationery

Carbonless

Instructions

CONTACT US NEXT TIME YOU NEED A PRINT QUOTATION
if it's on paper we print it

Your Local Mobility Shop

Great reductions on
wider fit shoes.
Ladies and gents,
End of Range &
Summer Shoes

SHOE SALE!



10 Woodway
Princes Risborough
HP27 0NN

01844 27 30 50
Mon-Fri 10am-5pm, Sat 10am-4pm

Ample FREE
parking!

www.IndependentLivingConsultants.co.uk

K. J. WINDOWS & DOORS

UPVC WINDOWS & DOORS

CONSERVATORIES

FASCIA & SOFFITS

BI-FOLDING DOORS

MISTED & BROKEN UNITS

REPAIRS

ALL WORK GUARANTEED

CALL KEITH: 07539 367200

Speen School & PTA

Summer, Spice and Success!

It's the end of another brilliant year at Speen School, a time to reflect on all of the fun activities of the summer term.

It's always a busy term and this one has been no different, packed full of sports. The first event was the KS1 Multi-skills tournament at Princes Risborough School. Speen CE School was successful in winning this athletic team event against the other schools in the area. Well done Year Two!

Then there was the Princes Risborough Gym and Dance Festival – Year Two joined the other schools in the Risborough Sports Partnership for 2 evenings which showcased the breadth of dance and gymnastics which is taught in our schools. Year Two demonstrated their strength and agility in a fast moving gymnastic display. Their dance item featured moves that they had learned during SpeenSchoolFest performed in a lively Punjabi Bhangra style, brilliant to watch.

This year's Sports day saw very different weather to last year with raincoats the order of the day. The children ran, threw, balanced and dribbled at speed before tucking into ice cream generously donated by Beechdean Dairies, thank you!

The ever-popular SpeenSchoolFest was also a great success, bringing together our children with Lacey Green, Hannah Ball and Speen Pre-School. We also welcomed orchestras from Naphill and Walter's Ash School and from St. John's School whose repertoire included pieces from BBC 'Ten Pieces'.



Year Two played their violins very well and there were past Speen students in St. John's orchestra performing too. The week continued with art, poetry, dance and music workshops

– all masterminded by the musical genius of Kate Laughton and a brilliant team of helpers. Jeni Fairey created some truly beautiful pieces of art for the ball and got the children learning new skills like sculpting clay models so a huge thank you and to all your helpers in the lead up and on the day. Sarah Uhart got us all inspired as a firebird, writing poems and creating story boards, thank you so much and to your trusty assistant Kathy Buxton.

Speen marquee was transformed into a vibrant Indian palace for this year's summer ball and looked amazing. The children's giant peacock, mandala, firebird and holi paint splat canvas from SpeenSchoolFest created a stunning

backdrop. The ball committee worked incredibly hard putting it all together, creating an impressive raffle and auction, making decorations, climbing high ladders to hang drapes, organising an incredible menu, to name but a few of the tasks. It was a brilliant evening so a massive thank you goes to Alex Allan, Angela Forkgen,



Antonia Winson, Clare Morris, and Helen Davies. The sun shone and whilst supping prosecco in the sun with everyone in their brightly coloured outfits we definitely had a taste of India.

Many thanks also to this year's sponsors, Andrea Appleby for all her work on the design of the posters and tickets, and of course to everyone who helped with the set up and clear away. We raised around £5,000, unbelievable for such small schools. This money will be split between school and pre-school with the school putting it towards an exciting new sensory garden.

Special mention has to go to our PTA committee for another fantastic year - Helen Davies as Vice Chair, Libby Luckett as Treasurer and Louise Lucas as Secretary – huge thanks from me to each of you for your never-ending support, work behind the scenes and always volunteering, especially as all three have held these roles for 2 years. A massive thank you also goes to everyone in the village who has supported us throughout the year and to our hardworking Governors.

Everyone at the school was delighted with the outcome of the Ofsted inspection in May. All areas of the school were found to be good - and pupil behaviour and safety were ranked outstanding. This is a significant achievement as it is six years since the school was last inspected, since then inspection criteria have changed and standards have been raised. Many congratulations go to Mrs Nayna and all of the teaching staff and Governors.

To end the year on a high note and really showcase our school, Katherine Matthews, Governor, and our neighbour Ian Warr arranged for a video to be taken of the children on a normal day at school, it's up on the school website and is a delight to watch.

It's always a little bit sad at this time of year saying goodbye to the year 2s and their families, what a fun year group you've been and we wish you loads of luck in your new schools, keep in touch!

Becky Khaira
Chair

Speen School PTA
www.speen-cofe.bucks.sch.uk



Christine Dunnington photography | equine portraits



unique - beautiful - guaranteed to impress - guaranteed to
delight any horse-loving owner

h 01494 488203 m 07713 286358 e info@cdphotos.co.uk w www.cdphotos.co.uk



SPEEN STORES

Your "useful little shop"

- Fresh bread baked daily
- Sub-post office
- Fresh fruit and vegetables
- Free-range eggs
- Home-made cakes
- Handmade greeting cards

Please visit the village web-site
www.speenbucks.org.uk for our opening hours
and more information

C.G. Tree and Garden Services

WORK UNDERTAKEN:

- Tree Surgery and Felling
- Fencing
- Hedge Cutting/Topping and Turfing
- Woodchips and Firewood for Sale
- Free Estimates
- Qualified Staff
- Fully Insured
- Seasoned Firewood



Phone

Chris Gant
01494 562045

Wildlife Watch

Most of our local wildlife has now completed its annual breeding cycle. As usual there are successes and failures to report.

In our own garden the Mallard that use our pond tried very hard but I am not convinced any young survived. After regular morning battles on the lawn with up to eight Mallard fighting over the potential nest site on the little island on our pond one pair became dominant. My belief is that this was the same pairing that raised seven young last year. The duck laid 14 eggs, 12 of which hatched on 14th April. A second female Mallard appeared and laid six eggs in a second nest, one foot away from the first nest. Unfortunately all the eggs were taken by a fox but the young duckling survived his visit. In mid-May the mother lead the 12 ducklings away, through a hole in the fence that I was not aware of, and marched them off up Abbotswood. Without access to water I would doubt that they would have survived the variety of local predators. The most remarkable nesting attempt was then made by a third female Mallard that nested under vegetation just two feet from our front door. After seeing her incubating the eggs for several weeks I was then away so I am not aware what happened to the nest.

Elsewhere at least two young Moorhens were seen with parents on the Water Lane pond whilst Mandarin ducks with three young were recorded in Great Hampden. Jackdaws nested in a chimney in Studridge Lane for the first time apparently. The local Great Spotted Woodpeckers raised at least two young and a Red Kite also fledged from a nest to the east side of the village, with probably others elsewhere. Our garden bird table has been teeming with young Blue Tits and Great Tits with four young Bullfinches also visiting with their parents. Jays raised five young in the woods whilst two juvenile Herons visiting the garden together was a new record. Other unusual sightings included a pair of Siskins in June (these normally being winter visitors) and also several Stock Doves visiting the garden regularly in June searching for seed dropped from the bird table. Ravens have been heard in the locality on several occasions but the most uncommon bird was probably a Wryneck recorded in Hughenden Valley on 18th April.

Local foxes have reared young with cubs recorded to the north and the east of the village with the earth being very close proximity to a house to the north of the village. Not all of the cubs born have survived. Polecats have again been reported from the wider local area with Henry Lane reporting a very clear sighting towards Bledlow. The local Roe Deer have again produced fawns. On one occasion I watched a female followed loosely by three fawns. At first I thought that this was a rare case of triplets but I now suspect that two orphaned young were loosely tailing a mother and her single fawn. For several years it has been apparent that the local rabbit population included a somewhat unusual gene pool probably from an

escape or release, with little black rabbits noted scuttling about on local fields. One of these, christened "Sooty" has now taken up residence around Woodview Drive also making visits through to Abbotswood, causing a mixture of consternation from some



residents and amusement for others. The animal has been present four or five weeks to my own knowledge, and may have been present much longer. Edible dormice (*Glis glis*) have caused problems for some residents again and have certainly affected the breeding success of Blue Tits using nest boxes in my woodland.

Please let me know of any interesting records - 01494 488016 symonds@spen10.freeserve.co.uk

Peter Symonds

JOHN BISHOP

Est. 1972

GARDEN MACHINERY

Sales & Service



HONDA
LAWN & GARDEN



Machine Hire

Scarifiers, Cultivators, Strimmers, Mowers
Hedge Trimmers

Blade/Chainsaw Sharpening & shear grinding.

We also stock a wide range of parts for various products.

Free Collection & Delivery



Tel No. **01494 563513**

Mob. **07917 106004**

1 Margaret Cottages, Northdean, High Wycombe, Bucks, HP14 4NH

Care and Support and You

At least one in three of us will have care needs at some point in our lives.

The new Care Act, which came into force in April this year, brings fundamental changes to social care which will affect almost everyone who needs care and support, or looks after someone who does.

In a nutshell, since April 2015:

1. Everyone has a right to an assessment by the Council of their care needs, regardless of their financial situation, and should receive information, advice and guidance about care whether they are eligible for Council support or not.
2. Carers' rights are now recognised in law. The role that Carers play in supporting people has been recognised and carers now have the right to an assessment of their own needs regardless of whether or not the person they care for receives help from the Council.
3. A new national level of care and support assessments means that the same criteria are now used across the country, making it fairer for everyone. This also means that care and support will continue seamlessly should an individual need to move to a different county.
4. Deferred payments, which are low cost loans from the Council to cover the cost of care and support in a care home, mean you do not need to sell your property in your lifetime.

There are so many ways we can help you to maintain your independence as well as provide information, advice and guidance about the care and support you may need. To find out more about care and support for you, a relative or friend, visit:

www.careadvicebucks.org or call 01296 383204.

Speen Village Hall

We have held some very successful events recently including a film and food night which was completely sold out and a super cream tea and plant sale which, together with a generous donation from the Garden Club, raised some £233 for the Village Hall Funds.

We have purchased ten lightweight folding tables and a trolley which will make moving chairs and tables a lot easier. These, together with a new urn and replacement tea spoons(!), make the Village Hall an ideal venue for children's parties and family celebrations - so please consider us when planning your next event.

Dates for your diary include another film and food night on Friday 23rd October and of course the ever popular Christmas Bazaar which will take place on Saturday 28th November. If anyone has unwanted items suitable for the Bazaar please contact Margaret Groves on 488180.

*Bill Groves
Chairman*

Speen Village Hall Management Committee

Hughenden Parish Council – Grants and Loans 2016

The Parish Council has powers to award grants and loans to local community organisations which it considers to be in the interests of Hughenden Parish or its residents. For example, in the last year grants have been made to village halls across the Parish, various sporting organisations and to assist the Hughenden Valley Community shop to establish their very successful café.

This year the Parish Council would like to receive requests from a wide variety of applicants - charities and nonprofit organisations, so that the broadest range of local organisations can be encouraged and supported.

If you are aware of, or involved with, an organisation that could benefit from Parish Council financial assistance now is the time that applications for loans and grants should be considered for submission as the Parish Council prepares its annual budget during November/December.

Organisations should therefore write/apply by the end of October in time to be considered for the main bids. Whilst requests for small grants can be made at any time, there is no guarantee that any funds will remain available if the request is not submitted by the end of October.

This is a competitive process against other bids, unfortunately the Parish are not able to fund all projects submitted as there is a limited budget available. All applications are treated equally and if successful the payment will be made after April 2016.

Applications should be made in writing. If you have any questions as to whether your organisation would qualify or if you would like a copy of the Grants and Loans Terms & Conditions as well as an application form please contact the Hughenden Parish Office, tel. 01494 715296, or visit the Parish Council website at <http://www.hughendenparishcouncil.org.uk/policies-procedures/>

Golf Wanderers

There is a small group of Speen social golfers who play on Thursdays at different courses. Roger Clarke is the organiser.



As a thankyou for his efforts over several years the group had a morning's golf at Whiteleaf on 18th June followed by a celebratory lunch in his honour.

John Holmes

Speen and North Dean Golf

Speen v North Dean at Beaconsfield Golf Club 13th May

On one of the first beautiful days this year 26 golfers did battle for the Spring Village trophy. The course was in fabulous condition and it was a delight to play in the sun, and feel warm.

18 holes off full handicap were played and the team scores averaged. This left Speen victors with an average of 27.4; North Dean were not far behind on 25ish.



Charlie Pearson (l) being presented with the village trophy by John Rogers

The individual winner was Keith Rosling with an impressive 39 points, he also won the prize for nearest the pin in two on the 18th.

John Mulry was nearest the pin on the 16th.

David Davies won the longest drive on the 17th .

The golf was followed by a good dinner; it was nice to see John Rogers, Bill Groves and Peter Brownridge appearing in a non playing role. I hope everyone who turned up had a good day.

Keith Fisher and Peter Brownridge also received prizes for various lapses in memory and organisation!!

If there are any new residents who would like to join in please contact Charlie Pearson on 488483.

Charlie Pearson

WHY NOT TAKE ADVANTAGE OF A FREE QUOTE ON ALL BOILER SERVICES, INSTALLATIONS & REPAIRS.



TAPS
THINK APPELBY PLUMBING SERVICES

PLEASE CONTACT Ian Appleby
 Telephone : 01296 290 700
 Mobile : 07964 041 655
 tapsuk@btinternet.com

NO CALL OUT CHARGE PLUS A FREE NO OBLIGATION QUOTE

We pride ourselves on a friendly, reliable service catering for all your plumbing and heating requirements.

Our plumbers/engineers are City and Guilds qualified and fully insured. Based in Aylesbury we cover a wide area. So feel free to contact us to discuss how we can be of service to you.



542440

PROVIDING A WATER-TIGHT SERVICE



A Cut Above

Have you discovered your local salon yet?

A Cut Above is situated in the heart of Speen village with easy parking. A unisex salon with a warm family friendly atmosphere.

Chris Stiles and Cathy Wardle are experienced professionals providing cuts, colour, styling and hair care advice at an affordable prices.

For appointments: **Salon 01494 488899 • Chris 07789 115 942 • Cathy 07753 858 611**

A Cut Above, Over Speen Stores, Chapel Hill, Speen HP27 0SL

We hope to see you soon!

**BEAUTIFUL, *HANDMADE*
CURTAINS
& CUSHIONS, BLINDS, FABRICS, POLES,
TRACKS
for
ELEGANT, STYLISH HOMES**

JUDITH NEWENHAM

**FOR PERSONAL SERVICE
AND A
FREE NO OBLIGATION
QUOTE**

**01494868461
07788718242**

JUDITHNEWENHAM@HOTMAIL.CO.UK

Nicki Thomas Web Design

**Creating bespoke websites
for a
wide range of businesses**

Visit www.nickithomas.co.uk
to find out more...

Hedgerows, Studridge Lane
Speen, Princes Risborough
HP27 0SA

Tel 01494 488665

Email nickithomas@storecomput.co.uk

Marjorie Jean Ridgley

1913 to 2015



Jean Ridgley was the Village Post Mistress for 31 years between 1949 and her retirement in 1980. She passed away on 22nd April 2015, just a few weeks short of her 102nd birthday, at the Hampden Hall Care Centre in Weston Turville near Aylesbury.

Jean was born on 9th June 1913 at Speen Post Office (now the Old Post Office), and lived there until 2009 when her deteriorating health required full time care. She was the third of four daughters to George Ridgley and his second wife Frances Dell. The four girls all attended Speen School. Jean left at the age of fourteen and went into service, but she did not take to this kind of work and soon returned home. Jean settled in helping her parents with the shop and Post Office. Her father, as well as being Post Master, was also the village baker at that time.

George had originally purchased the property in 1881 when it was both a bakery and a shop. The Post Office role started in 1903. George was still very active as the Post Master during the Second World War, but Jean was doing most of the work until 1949 when George officially retired as Post Master aged 95.

As Post Mistress and shopkeeper Jean was a focal point for all the village news and gossip. Everybody in the village knew her well and in 1963 she was invited by Dr and Mrs Dickson of George Farm to the wedding of their daughter Fiona to the entertainer Roy Castle. On that day she met many other celebrities of that era including Miriam Karlin and Harry Secombe.

Jean was a keen gardener and was active in the Women's Institute. She liked watching all sport on television and was a faithful supporter of Arsenal from way back. Jean took little time off work, but once retired she was able to take holidays including ventures to Holland and Austria with her good friend Frieda Turner.

When it came to retirement Jean could not compete with her father and she decided to go early at the age of 67. To be fair to Jean, when George was 67 he had four daughters aged between four and eleven to support! On 31st May 1980, with many Villagers in attendance, the Head Post Master from



Aylesbury carried out a presentation and the Villagers themselves generously presented Jean with a fine carriage clock which she still had with her in the care home.

Jean generally enjoyed good health through her life but as time went on joints began to wear and she had both hips replaced. Although the second operation in 2003 was a success, it was soon apparent that something was wrong with Jean's mental capacity and, unfortunately, this was the beginning of dementia which progressively got worse. With the help of her brother-in-law, Charles Hendry, she was able to stay at the Old Post Office until she went into care in December 2009. Physically, Jean had a strong constitution and Charles always said she would outlive all her contemporaries – which she did. In longevity, even her father could not compete – he only lived for 100 years.

Affectionately known as Jeannie to her nieces and nephews, her passing ends an era for our family's links with the lovely Village of Speen after over 200 years. The Ridgleys, Dells and Chiltons (George's first wife's family) can all be traced back into the 1700s.

*Charles Hendry
(nephew to Jean)*

Message from SNDN Chairman

This will be the last edition of SNDN produced by James Hazeldine and Jude Awdry. They have worked very well together to produce such a high quality village publication three times a year. This brings news of the village activities and keeps us in touch with organisation contacts and future activities. We are also kept up to date with advertising of local services.

Many thanks to James, our magazine editor for the last three years, for his excellent efficiency. Jude has been in charge of production for many years. We really appreciate her professionalism and that she has found time to fit in the magazine with her very busy work schedule.

We are also very grateful to Jacqui Laing who has kindly agreed to take forward our magazine for the next two issues. So your support will be much appreciated.

*Gloria Holmes
Chairman*

ALLIED HEALTHCARE

As a population we are getting older and many of us will be faced with finding nursing or personal care for an elderly relative or planning our own future care if we become incapacitated. Bucks, residents are increasingly making a choice, where possible, of living in their own homes for as long as possible and the local branch of Allied Healthcare is aiming to make this option easier.

The local branch of Allied Healthcare has been operating for over 21 years, based just outside of High Wycombe, has a proven track record of providing domiciliary care in the community.

Increasingly there are fewer hospital beds and long term care homes that are accessible to those needing help, support and care, and most people, if given the choice, would prefer to be treated at home with their own possessions around them. We can offer a wide variety of Care calls from 15 minute pop-in call, once a day to

multiple calls or indeed a full time Live In Care.

The offices of Allied Healthcare at High Wycombe are able to help with assessing your needs and advising on all aspects of your care. Before care starts you would be visited by our assessor to ensure that a comprehensive care plan was written and tailor made to suit the needs of the client. This can be for a basic care package to a more specialized and complex packages in the case of a serious illness. We will help you to consider whether you need a full-time carer, perhaps a special bed or other equipment, or maybe additional carers at certain times of the day to help with lifting or turning. If needed you would have the advice of the 'In House' Trainer to advise on specialist Moving and Handling issues. Allied is willing to go the extra mile to provide the highest standards of care. They try to ensure clients build a relationship with a small team of carers rather than having a constantly changing set of faces. They recommend the use of a Keysafe

which ensures a carer, can always gain access to a client's house to provide the care and raise the alarm if needed. All of the Care workers are trained to the highest standard as required by our regulators, CQC and our stringent internal audit team. Many of our workers have training and expertise in specialist areas but if we needed to we would provide training to meet a specific need of a client.

If you would like more information about Allied and the services we offer then call 01494 488040, and we can meet with you for a no obligation visit or provide you with details and costings of our services.

Work for Allied Healthcare

We always have a need for additional employees to support the services we offer. If you are interested or know of a friend who is interested in joining us as an employee we offer an attractive package. We provide care across the High Wycombe and surrounding areas.

Care & support in the comfort of your own home

Do you or a relative require care or support to live your life the way you choose? If so, Allied Healthcare can help. We have been offering an excellent dependable service in the Buckinghamshire area for over 21 years.

SELF DIRECTED SUPPORT & PRIVATE CLIENTS WELCOME

Full assessments carried out before care commences. All our staff have extensive training and have enhanced CRB checks. We also offer call monitoring.

The range of services we offer

- Visits (1/4, 1/2, 3/4, HOUR)
- Live in/24HR care
- Nursing care
- Holiday cover
- Waking nights/sitting
- Assisted bathing
- Light household duties & shopping
- Convalescence/respite



All about you

For more information or assistance please call

01494 488040 / 01494 488141

Email: highwycombe@alliedhealthcare.com

If you are interested in becoming a Carer or working with Allied Healthcare then please call the numbers above for more information and an application pack.

Allied Healthcare is an equal opportunities employer and is regulated by the CQC. Allied Healthcare is committed to safeguarding and promoting the welfare of children, adults and young people and expects all staff and volunteers to share this commitment.



Speen Pre-School

The end of a fun-packed year

We have just reached the end of the summer term and what a busy time it was. All the children enjoyed an exciting end of term party with a visit from music makers Jo Jingles. We also took part in SpeenSchoolFest in June where we enjoyed a morning of Indian dancing, food tasting and dressing up. July saw our annual sports day with competitive running races from both the children and grown ups alike! And parents and staff ran a stall at Speen Fete offering children the children to get the chance to get messy with dinosaur jelly and exploding volcanoes!



We have had another successful year of fundraising and would like to express our thanks to everyone in the village who comes out to support us at our events. Being such a small Pre-School fundraising is absolutely vital to us to keep the setting going and it certainly keeps our voluntary committee (aka mums!) busy. Our biggest fundraising event by far is Speen Summer Ball, this year A Passage to India, and we enjoyed supporting Speen School to put on this fantastic event once more helping to raise significant funds for both settings.

This year the staff organised a sponsored walk for the children on Speen Playing Fields. They hopped, skipped, jumped and walked like various animals to raise enough money to buy a whole host of new musical instruments for Pre-School.



Our Forest School and on-site outdoor play facilities have gone from strength to strength this academic year. The children have a fantastic area to explore in Ridgley's field with new wooden seating, den making, a mud pit and swing rope, the children even got to experience a real camp fire recently and toast marshmallows, eagerly counting the number of blows to cool them down before they could eat them! Our courtyard space back at the village hall is used daily in all weathers and is now fully equipped with sand pit, water play, outdoor kitchen, trikes, balls, hoops etc and building blocks and every day we bring the 'inside out' offering outdoor story time and mark making opportunities for all.

We are looking forward to starting back with the new term on 7th September and welcoming a few new children. The staff team is already busy planning a range of engaging new activities and we will continue to use our electronic online learning journals to keep track of every child's progress at Pre-School.

As several children move on to big school in September we have spaces available in many of our sessions for immediate start. Prospective parents are most welcome to pop in and visit us at any time; however our Open Morning will take place from 9.30am to 11.30am on Tuesday 10th November 2015 - all prospective parents welcome.

Speen Pre-School is open to children age from 2 to 5 years. To enquire about a place or receive a prospectus please contact our Admissions Officer, Mei Price, on 01494 488155 or call Pre-School on 01494 488160 during term time or email office@speenpreschool.org.uk.

For more information please visit www.speenpreschool.org.uk

*Alex Allan
Chair
Speen Pre-School*

**SPRINGLINE
CARS** PRIVATE HIRE

- Airport Transfers
- Events & Occasions
- London Trips
- Personal Service
- Owner Driver
- Local Knowledge

RISBOROUGH
01844 27 44 74
Know the voice, know your driver



Coles & Blackwell

Car Service & Repairs

Book online at:

www.colesandblackwell.co.uk

Quality car servicing and repairs
much closer than you think!

Where are we? You will find us 300 metres down the small lane opposite the top of Bradenham Wood Lane in Walters Ash, High Wycombe HP14 4UX

Established in 1959



Servicing

Did you know you can get your car serviced by us without invalidating your manufacturers warranty? Legislation passed a few years ago means that you can now choose any garage of your choice to service your vehicle.

Courtesy cars

We have a fleet of new loan cars at your disposal whilst we service your own car or repair bodywork damage. Best of all - they are FREE OF CHARGE!
All part of the service you come to expect from Coles & Blackwell

air conditioning

mot testing

vehicle servicing and repairs

crash repairs

tyres, clutches & brakes

computerised diagnostics

batteries & exhausts

Open Monday to Friday 9:00am to 5:30pm

Saturday 8:30 am - 12:30pm

01494 563102

LJM ELECTRICAL

48 Aspen Court, Freer Crescent, High Wycombe, HP13 7YG

Fully Qualified Electrician

Full or Partial Rewires

Sockets

Indoor/Outdoor Lighting

Fuse Board Replacement

Showers

Fault Finding

Inspection & Testing

FREE QUOTES & FULLY INSURED

ELECSA

Part P
Approved Contractor

www.elecsa.co.uk

Call Lewis Mills: 07793 725554

Email: lewis@ljmelectrical.co.uk

M. R. COLLINS

GARDEN CONSTRUCTION

Est 1979

Driveway, Paving, Brickwork, Fencing
Groundworks, Excavations, Operated
digger hire.

We specialise in Block paving and all
types of slab laying Indian stone and
concrete offering a start to finish service
inclusive of excavations muck away,
supply and fix.

For estimate Phone: 01844 346360

Mobile: 07774 256732

Summer Holidays with Speen Church Youth

The first two weeks of the summer holidays were full of activity for the children and teenagers from Speen Church. It began with a bang at Lighthouse Princes Risborough, the annual holiday club for children, with members from the church volunteering to be part of a team of over 200 helpers. It was a lively and fun filled week, with changeable weather conditions enhancing the overall experience! Speen Church took on the role of running the café, and contributed to the army of Lighthouse Keepers, Lamplighters and also to the Lighthouse band. It was an incredible start to the summer, and was great to see so many children from the village enjoying the week.

At the beginning of August, we travelled down to New Wine in Somerset, which is a Christian festival attended by over ten thousand people. Some of us volunteered again to serve on the New Wine team, while others just enjoyed the thought provoking seminars, fantastic music and activities that go on throughout the week.



Check out more photographs and find out what else has been going on at the church on our website <http://www.speenchurch.org>.

Lucy Entwisle

Speen Church sets up camp



Serving on Team at New Wine



Some of Speen Church Youth with Moira, our missionary from North Dean currently working in Ethiopia



RISBOROUGH AREA COMMUNITY BUS

Our services to Princes Risborough run on Tuesdays and Saturdays

Depart Risborough High Street 0850, arrive Speen 0905, arrive Risborough High Street 0929

Depart Risborough High Street 1135, arrive Speen 1150, arrive Risborough High Street 1215

An afternoon service on Tuesdays only is available on request. Depart Risborough 1605, arrive Speen 1625, arrive Risborough 1649

The bus is available for Group Use evenings and weekends for up to 14 people. Our unique door to door service can be used for clubs, families & friends; for your own events or for sports, shopping, theatres and parties. Ring Georgina on 07941 963097 for information and bookings

We also run regular outings to places of interest including Garden Centres, Bicester Village and tours of the Chilterns. See our new website at www.racb.co.uk or call 07941 963097



- Over 20 years experience
- All interiors and exteriors
- All wall coverings
- Free quotations

SB Professional
 Painting & Decorating
 Call Ben On:
 07973 539495 or 01296 486470

References from completed work are available from Speen and surrounding areas

Speen and North Dean Toddler Group

Every Tuesday morning from 10am, North Dean Village Hall is transformed into a baby and toddler's dream. This is a small and extremely friendly play group that has been going for well over 10 years and has evolved accordingly over the years. We have children from 0-4 years coming each week from as far as Bledlow and Naphill, not just Speen or North Dean.



The children have an extensive range of toys to play with including large Little Tykes ride-on equipment. There is also a designated area for messy play. Most weeks there is an age appropriate arts and crafts table which is linked with the theme for that week. The children are encouraged to have a drink and a biscuit mid-morning while listening to a story followed by some simple songs. EVERYONE is encouraged to join in with the singing.

We are very lucky to have a large outdoor play area attached to the village hall and when the weather allows we are outside (with a gazebo for shade).

The cost is only £1.50 per child and we even let the grown-ups have a coffee and biscuit too.

The new term starts on Tuesday 8th September and for further information please contact the new leader Sarah Uhart brimmersfarm@gmail.com
Tel : 07951 485436

*Helen Davies
Outgoing Leader*

Help for Heroes fete

The 'Help for Heroes' fete went very well with perfect weather. Our teas were very popular and, even with many helpers, we were pushed at times to keep up with demand.

Your cakes were invaluable. As a result of my appeal we had lots - see 'photo, but they nearly all were used. I don't know how we would have coped without your help.

I am most grateful to you, many thanks indeed.

Gloria Holmes



Nelson Electrical Services

**Fully Insured
NAPIT Registered
Local Electrician**

- Extra power points fitted
- Extra lights fitted
- New fuse box fitted
- Repairs and upgrades
- Total or part rewires
- New circuits
- LED lights fitted
- RCD installed
- Outside lights or shed sockets
- Inspection and testing



www.highwycombeelectrician.com

Ever found it difficult to get an electrician for that small job or asked for a free quote and never got a response?

Then call **Michael Nelson** on

07908 644058

Speen Helping Hospices Group

The group started their year with **The Spring Lunch** on Friday 15th May held for the fifth year running at the glorious Sefton's Barn within the beautiful setting of the Horse Trust.



Once again we had beautiful weather allowing our guests to browse the plants and jewellery for sale in this peaceful and relaxing setting. Our supporters enjoyed a three course lunch with wine followed by coffee, all prepared and served by the SHH committee.

This year for the first time we held an auction which proved to be a very lively affair, and not only enjoyed by all but also added to the funds

the SHH raised to help the vital work carried out by the hospices.

After coffee Helen from Helen & Douglas House gave us a very moving talk on how they supported a teenage boy after his little sister had died, showing us that they not only provide the care to those with life limiting conditions but support the family as well.



Helen & Douglas House is one of four hospices that the SHH support. This year our supporters helped us raise £1426.64.



exclusive hand-painted kitchens

MANUFACTURERS OF FINE BESPOKE KITCHENS RESTORATION & REPAINTING OF EXISTING KITCHENS



FITTED AND FREE-STANDING FURNITURE

PAINTED KITCHENS NAPHILL

07768 975 323

johnvesterling4@gmail.com

The Spring Lunch was followed by the SHH annual **Arts & Crafts Fair** held on Sunday 5th July in the village marquee on the village playing field and again was a great success. The marquee was brimming with the work of 26 local designers and artists along with some local foods. This year the event was advertised as a Craft and Food Fair and we would like to apologise for the fact there was little in the way of local foods for sale. It was not for the lack of trying as every avenue to source them had been exhausted, but for one reason or another could not make the event, and unfortunately too late to change our advertising.



As well as the usual tea, coffee and homemade cakes we did add strawberries and cream with a glass of pink sparkling wine along with Beechdean Ice Cream, which all went down very well in the hot weather. A BBQ was also provided especially for the Fair by The King William IV.



The Group would like to thank Valletta and Michael Brown for a very generous donation and for the help given by Clive and Di Rainbow in running the first Silent Auction. Added to everything else this helped raise over £1500 of vitally needed funds for Florence Nightingale, South Bucks, Iain Rennie and Helen & Douglas House Hospices.

It was a chance to enjoy the lovely village, relax, browse the Craft Fair, refuel at the pub or BBQ and the SHH would like to thank all those who came along and helped make the day such a success.



At the end of the year after the final SHH event all funds raised during the year will be divided equally amongst the four hospices supported by the group. Cheques are raised and hand delivered.

Please refer to the SHH new facebook page to keep in touch with all future events:
www.facebook.com/speenhelpinghospices

The SHH try to make all their events as fun and interesting as possible to give all those who come along enjoyment, whilst helping raise vital funds for our local hospices. All hospices are desperately short of funds and rely heavily on small groups like ourselves so a 'BIG THANK YOU' from all of us on the SHH committee for your continued support.



Ann James



Bucks County Council - Member for Lacey Green	Carl Etholen	01494 564771
Hughenden Parish Council - Chairman	Roger Beavil	01494 715296
Lacey Green Parish Council - Chairman	Cathryn Davies	01844 342800
Lacey Green Parish Council – Councillor for Speen Ward	Roger Craft	01494 488343
North Dean Good Neighbours	Judith Broadley	01494 563178
North Dean Village Hall – Bookings Secretary	Jez Wicks	01494 563517
North Dean Village Hall - Fete	Jez Wicks	01494 563517
North Dean Village Hall - Secretary	Robin Hughes	07920 748580
Piggotts 7 '48' Musical Evenings	Nick Wheeler-Robinson	01494 562167
Police Contact	Non emergency Emergency	101 999
Riding for the Disabled	Gloria Holmes	01494 488420
Speen Good Neighbours	Pat Richardson	01494 488627
Speen & North Dean Guides	Pauline Hall	01494 488372
Speen & North Dean News - advertising	Tom Dent	01494 488943
Speen & North Dean News - Chair	Gloria Holmes	01494 488420
Speen & North Dean Toddler Group	Sarah Uhart	07951 485436
Speen Baptist Church	James Entwisle	01494 488875
Speen Fete - Chair	Amanda Dobbs	01494 488887
Speen Helping Hospices - Secretary	Maureen Laing	01494 488397
Speen Marquee	Greg Cook	01494 488939
Speen Playing Fields Chairman	Tony Bobroff	01494 488688
Speen Pre-School - Chair	Alex Allan	01494 489838
Speen School - Head	Denise Nayna	01494 488321
Speen School PTA - Chair	Becky Khaira	07815 134330
Speen Stores	Alison Templeman	01494 488258
Speen Tennis Court - Secretary	Philippa Lane	01494 488453
Speen Village Hall - Bookings	Sue Taylor	01494 488500
Speen Village Hall - Chairman	Bill Groves	01494 488180
Speen WI - Secretary	Jean Morris	01494 488529
Wycombe District Council - Member for Lacey Green & Hampdens	Mel Foster	01494 488670

BEECHDEAN

Farmhouse Dairy Ice Cream

Made from fresh Jersey milk
and rich double cream

Ice Cream for Every Occasion!

- Made Fresh on the farm
- No artificial colourings or additives used
- Suitable for vegetarians
- Gluten free



Beechdean Dairies, Old House Farm, North Dean, High Wycombe, Bucks HP14 4NL
01494 563980 | www.beechdean.co.uk



@BeechdeanGroup



Beechdean Group



Homes of Distinction

If you are looking for a very special property or have one that would benefit from our award winning marketing then we are ready to act on your behalf.

01844 343131
Princes Risborough Office

01494 711677
Hazlemere Office

FINE & COUNTRY
fineandcountry.com™