

Hold the dates: 6th-20th September
SPEENFESTIVAL 2015



Issue 62
Spring/Summer 2015



Speen and North Dean News



Editor: James Hazeldine

Advertising: Tom Dent

Production: Jude Awdry

Committee:

Gloria Holmes – Chair
Megan Chinn
Nick Wheeler–Robinson
Julie White

Printer: PK-Inprint Ltd
Tel: 01494 452266

for simply beautiful gardens



garden design
construction
planting
after-care

www.alchemille.co.uk
01494 488072 / 07909 936718

Contents

What's On	4
Speen Pre-School	7
Speen Playing Fields	9
Speen Heritage Group	11
Litter	13
A Surprise Birthday Party	17
Wildlife Watch	19
Speen Festival Pullout	21
Living with Arthritis	25
Anyone for Tennis	25
Speen Church	27
Knit and Natter	29
Personal Perspectives	31
Down on the Farm	33
Speen WI	35
Speen Village Hall	35
Speen School & PTA	37
District Council News	39
Road Signs	39
Defibrillator Group	42
Ivy Rosie Whittle	41
Who's Who	42

Speen and North Dean News

Do you ever need an extra copy? Further copies are available at a cost of £1. Please contact Gloria Holmes on 488420.

NEXT EDITION

Copy for the next edition (63) is due by Sunday 16th August.

The planned publication date is during **September**. Please send photos separately from text, together with captions and a consent form (download from the SNDN website www.speenbucks.org.uk) if any of the photos are of children. Send to editor.sndn@speenbucks.org.uk.

Index of Advertisers

A Cut Above	6
Alchemille Garden Design	2
Allied Healthcare	30
Beechdean Farmhouse	43
C.G. Tree & Garden Services	39
Chiltern House Partnership	34
Christine Dunnington	20
Coles & Blackwell	28
Darvills Hill Farm	40
Fine & Country	44
Fraser-Morgan School of Dancing	40
Hamptons International	26
Heppelthwaite	16
Hughenden Builders	31
Independent Living Consultants	10
JML Training Consultancy	14
John Bishop	38
Judith A Newenham	10
Kevin Mills	38
K J Windows & Doors	8
LJM Electrical	38
Mix 96	36
M.R. Collins	40
MWH Interiors Limited	8
Natalie Jane Dance School	26
National Energy Foundation	28
Nelson Electrical Services	9
Nick Higgins	7
Nicki Thomas Web Design	10
Nordic Walking	6
Painted Kitchens	32
Paul Newman Limited	12
PK-Inprint Limited	10
Premier Architectural Joinery	32
Risborough Area Community Bus	20
Risborough Carers Limited	18
SB Professional Painting & Decorating	5
Seasons Farm Shop	15
Speen Stores	38
Springline Cars	29
Taps UK	26
Village Environmental Services	14

What's on in Speen and North Dean

Month	Event	Where	Contact
April			
Sunday 26 th	Songs and Arias	Pigotts Singing Barn	Nick Wheeler-Robinson 562167
May			
Thursday 7 th	WI. Resolutions	Speen Village Hall, 7.45pm	Jean Morris 488529
Wednesday 13 th	Speen v North Dean Golf	Beaconsfield Golf Club	Charlie Pearson 488483
Wednesday 13 th	MPS	Hampden Arms, 8.30pm	Graham Peart 488327
Friday 15 th	Hospice Group, Spring Lunch	Home of Rest for Horses	Christine Symondson 488654
Wednesday 27 th	Garden Group visit	Stoke Poges Memorial Gardens, 2.00pm	Daphne Westray 488742
June			
Thursday 4 th	WI. Out of the Dark	Speen Village Hall, 7.45pm	Jean Morris 488529
Saturday 7 th	Horse Trust – Family Fun Day	Home of Rest, 12 noon	488464
Wednesday 10 th	MPS	Wheel, Naphill, 8.30pm	Graham Peart 488327
Saturday 13 th	Speen FunDay	Speen Playing Field, 2.00pm	Matthew Davies 488847
Monday 22 nd -26 th	Speen SchoolFest	Speen School	director@speenfestival.org
Saturday 27 th	PTA Ball	Speen School	Becky Khaira 07815 134330
Tuesday 30 th	Garden Group visit	Hidcote & Kiftsgate Gardens, 9.00am	Daphne Westray 488742
Future Events			
4 th July	Hospice Group Craft Fair		Christine Symondson 488654
11 th July	Speen Fete	Speen Playing Fields	Amanda Dobbs 488887
6 th -20 th September	Speen Festival		director@speenfestival.org
7 th November	Speen Bonfire Night	Speen Playing Fields	Tony Bobroff 488688
4 th December	Speen Christmas Tree	Speen Playing Fields	Tony Bobroff 488688

Welcome to the Spring edition of your village magazine.

You'll notice that this issue is forty four pages as, for once, there has been plenty of copy submitted and the advertising space is on the increase.

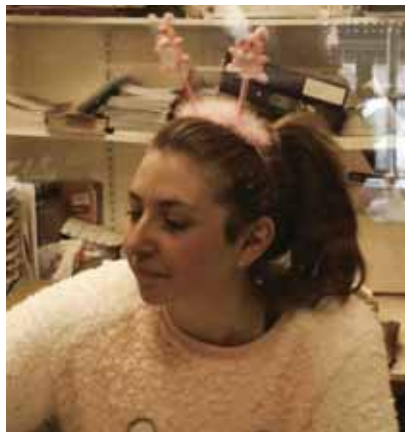
After many pleas for some good quality photographs, I was delighted to receive a selection from Jeni Fairey who took a number on her morning walk to school. She lives near The Old Plow and tells me that there is always something fantastic to see on the way. Her work is given pride of place on the front page.

Talking of The Old Plow, probably like me, you were surprised to learn of Malcolm and Olivia's decision to retire and close what has been a real "must visit" restaurant. I am sure that the restaurant will be sorely missed. However, they'll still be in the village. Best wishes to them both for their retirement.



Talking of retirement, in keeping with the constitution of the magazine I will be packing it in after the next issue. So, we are looking for someone to take over the reins of editorship. It really isn't too onerous. If you're interested please get in touch.

An Easter surprise



You may have all noticed that you received a surprise bag of Easter eggs over the holiday period. In case you weren't aware as you munched your way through them, these were a really lovely gesture

from Ali and the team at our Speen Stores – the very useful little shop. Very kind and much appreciated.

James Hazeldine

- Over 20 years experience
- All interiors and exteriors
- All wall coverings
- Free quotations

SB Professional
Painting & Decorating
Call Ben On:
07973 539495 or 01296 486470

References from completed work are available from Speen and surrounding areas



A Cut Above

Have you discovered your local salon yet?

A Cut Above is situated in the heart of Speen village with easy parking. A unisex salon with a warm family friendly atmosphere.

Chris Stiles and Cathy Wardle are experienced professionals providing cuts, colour, styling and hair care advice at an affordable prices.

For appointments: **Salon 01494 488899 • Chris 07789 115 942 • Cathy 07753 858 611**
A Cut Above, Over Speen Stores, Chapel Hill, Speen HP27 0SL
 We hope to see you soon!

Nordic Walking

Led by Charlotte Downing
 Chartered Physiotherapist & Qualified Nordic Walking Instructor



- Improve Fitness • Return from injuries •
- Manage health conditions • Improve well-being •

Groups for novices and experienced walkers to explore the beautiful Chiltern countryside mornings and evenings from Speen Playing Fields

Contact Charlotte to make a booking
 tel: **07580 265945**
 email: chilternsnordicwalking@gmail.com

Speen Pre-School

Baking, making and getting messy!

As I type we have reached the end of our Spring term; it began with a little snow but fortunately this didn't disrupt us too much and we have ended the term with some glorious sunshine for our annual Easter Hunt fundraiser, thank you to many of the young families in the area who came out to support us. Everyone seemed to have lots of fun running around the field searching for treasure.

The children have enjoyed an exciting term learning about many different festivals and celebrations. They made lanterns and discovered noodles and dragons for Chinese New Year, they painted daffodils to celebrate Spring and of course created wonderful Easter bunny baskets. All the mums also received a beautiful hand decorated card for Mothers' Day and a biscuit decorated by their child. The children love to bake and we make this a regular activity every term; on Valentine's Day the children made heart-shaped biscuits and they have also enjoyed baking gingerbread men and Easter cakes recently.

The staff team sets off each half-term with a plan of activities and themes for the children to get involved in, and update these plans weekly in line with every child's needs and interests. The children have particularly enjoyed messy play this term, getting stuck into all kinds of things from sticky mud, coloured rice and ice to searching for letters and numbers hidden in shaving foam and dinosaurs buried in sawdust.

We celebrated World Book Day in March for a whole week with parents coming in to read their child's favourite stories to the group and all the children dressed up as their favourite character in a book. The school library service continues to be a success. It enables us to expand our range of reading materials and encourage a love of reading. The children take home a library book each week to then discuss in small groups at Pre-School to encourage listening skills and early literacy- book club starts at age 2 in Speen!

We continue to work closely with Speen C of E School to help prepare children for starting school. Our Leader and Deputy Leader have spent time recently with the Reception teacher to discuss ways to consistently teach early phonics, writing and number and letter recognition at Pre-School. We have also enjoyed a fun visit to the reception class for story time this term. We are very much looking forward to getting involved in

SpeenSchoolFest again this year. And of course Pre-School will be fully supporting the organisation of the Summer Ball fundraiser in partnership with the school.

This brings me on to thinking about the Summer term, when hopefully the weather will be kind to us! We encourage outdoor play daily in all seasons and are continuing to improve the facilities we have available in our outside courtyard; our outdoor kitchen is now fully stocked! We are also lucky to have two fantastic play areas in the village we visit with the children.

Our weekly Forest School sessions also remain popular. We had to miss a few sessions earlier this year due to bad weather and fallen trees, however thanks to the hard work of the playing fields committee the fallen trees have been cleared and we have some fantastic new seating. We tend to visit Ridgeley's Field every Friday morning in term time from 9.30am to 11.30am for Forest School sessions. During this time we would kindly ask if all dog owners visiting the field could please keep their dogs on a lead and away from the children, many of whom are still quite small. Thank you for your understanding.

Speen Pre-School is open to children aged from 2 to 5 years. We have spaces available during several sessions. To enquire about a place or receive a prospectus please call Pre-School on 01494 488160 during term time or email office@speenpreschool.org.uk.

Alex Allan
Chair, Speen Pre-School
www.speenpreschool.org.uk

Nick Higgins
Forestry & Fencing
Contractor
☎ 07768 383418
☎ 01494 488835



45 Great Hampden
Bucks
HP16 9RJ

Seasoned logs
available

mwh

design · refurbishment · construction



- Interior building work and alterations
- Bathroom design and installation
- Kitchen design and installation
- Full property renovations
- All work covered by comprehensive insurance and full guarantee

t: 01494 488002

m: 07866 738829

mwh | interiors

www.mwhinteriors.co.uk info@mwhinteriors.co.uk

Hayton Cottage, Flowers Bottom Lane, Speen, Princes Risborough, HP27 0PZ

K. J. WINDOWS & DOORS

UPVC WINDOWS & DOORS

CONSERVATORIES

FASCIA & SOFFITS

BI-FOLDING DOORS

MISTED & BROKEN UNITS

REPAIRS

ALL WORK GUARANTEED

CALL KEITH: 07539 367200

Speen Playing Fields

We have a number of changes in Trustees this year with the resignation of our Treasurer Keith Fisher, our erstwhile Secretary Kay Knight and Stalwart Trustee for many years Alistair Blundell, all through pressure of work. We are also sadly losing our very own fire raiser Christian Bonfire Nagele, who is moving out of the village. I thank him most sincerely for his Firework nights, which have become legendary, and we are all very sorry to see him, Mel and the children leave us. Christian has however agreed to one last hurrah this November, so be warned to stand by!! I would like to thank them all for their work and support over the years and am particularly pleased that they have all volunteered to continue helping in the future.

I am therefore pleased to welcome Adrian Farley as our Treasurer, as well as Matt Davies, who will take the lead for Fun Day and Duncan Dow to join the Trustees. We would like to recruit an additional Lady Trustee, to maintain the balance.

As you know we have been discussing with the Parish Council, a lease on the limited playground area of the field, to allow them to invest in the play equipment, which requires upgrading. This proposal was unanimously passed at our AGM, and Andy Thompson and myself have been negotiating Lease Breaks, Penalties and Investment Proposals with the Chair and Treasurer of the Parish Council.

Summary of Speen Playing Fields events.

- The Pre-School continue to use Ridgeley's Field for their Forest School at least once a week and we have cleared a substantial area within the wood for the siting of a mud pit and fire pit for them. This has been very worthwhile although has necessitated some extra tree maintenance work and expense.

- Fun Day 14 returned, bigger and better than ever, with Matt Davis taking the lead. The Night before saw the Lettuceheads striking up a Rock Concert and on the day The Roman Games theme (in line with the world cup) was inspired, allowing creative imaginations to run uninhibited. The Chariot Race and the Viaduct water carrying races were particular highlights; the chatter and laughter of over 100 children in 5 teams running whilst trying to transfer water in flowerpots on a beautiful summer's afternoon on the Field is what SPF is all about.

- The Village Fete on the field in July was a great success and we were all the more grateful to the Fete Committee who once again supported us with their generous donation. Many thanks to all those who helped; the Fete involves a huge amount of work in setting up and striking. The event was once again followed by the Craft Fair, in the Marquee, organised by Christine

Symondson and the Speen Group committee, raising money for Hospices in Buckinghamshire, a wonderful cause.

- No Playing Field calendar is complete without Bonfire night. Christian and Pete combined their substantial talents, and once again did not fail to impress. The creation of a scale model of Pudding Lane, 11 meters long by 5.5 meters high, complete with gallows for the hanging guys and carts was fantastic. One of the new builders was heard to observe that he'd never seen panels unscrewed from a bonfire, because the measurement was not to scale! This, together with Keith's fireworks and food supplied by the Pre-School mums, combined to ensure a great evening, despite the poor weather.

- The closing event, as always, was the Lighting of the Christmas tree and onto the Village Hall, where this year the Vicar conducted a children's performance, then led us all in carols. Many thanks to Debbie and Lesley for organising and for the mince pies. We even managed to collect £100 to the British Heart Foundation in Jenny Rogerson's name to help research into her heart condition.

We look forward to an overwhelming response to the Spring work party in April, and all the 2015 events, not forgetting that this is Festival Year again.

*Tony Bobroff
Chair
Speen Playing Fields*

Nelson Electrical Services

**Fully Insured
NAPIT Registered
Local Electrician**

- Extra power points fitted
- Extra lights fitted
- New fuse box fitted
- Repairs and upgrades
- Total or part rewires
- New circuits
- LED lights fitted
- RCD installed
- Outside lights or shed sockets
- Inspection and testing



www.highwycombeelectrician.com

Ever found it difficult to get an electrician for that small job or asked for a free quote and never got a response?

Then call **Michael Nelson** on

07908 644058



PK
InPrint Limited

Newsletters

Leaflets

Programmes

Brochures

Folders

Labels

Stationery

Carbonless

Instructions

Printers of Speen & North Dean News

**DESIGN, ARTWORK
DIGITAL & LITHO PRINT**
all under one roof

8 Wycombe Industrial Mall
West End Street
High Wycombe
Buckinghamshire HP11 2QY

T: 01494 452266
F: 01494 452216
E: mail@pkinprint.co.uk
W: www.pkinprint.co.uk

CONTACT US NEXT TIME YOU NEED A PRINT QUOTATION
if it's on paper we print it



Your Local Mobility Shop
Independent Living Consultants







Small aids for everyday independence!

Larger items for mobility and comfort.





Call us, or visit our showroom :
01844 27 30 50
10 Woodway, PRINCES RISBOROUGH HP27 0NN

www.IndependentLivingConsultants.co.uk

Nicki Thomas Web Design

**Creating bespoke websites
for a
wide range of businesses**

Visit www.nickithomas.co.uk
to find out more...

Hedgerows, Studridge Lane
Speen, Princes Risborough
HP27 0SA
Tel 01494 488665
Email nickithomas@storecomput.co.uk

**BEAUTIFUL, HANDMADE
CURTAINS
& CUSHIONS, BLINDS, FABRICS, POLES,
TRACKS
for
ELEGANT, STYLISH HOMES**

JUDITH NEWENHAM

**FOR PERSONAL SERVICE
AND A
FREE NO OBLIGATION
QUOTE**
01494868461
07788718242
JUDITHNEWENHAM@HOTMAIL.CO.UK

Dudley Frank Bristow.

In issue 61 of the SNDN we mentioned Dudley Frank Bristow who was listed on the 1918 Electoral Register. From that, we know he was a Private in 168 Company of the Labour Corps, but that is all. His Army records, like those of most WWI soldiers, were destroyed during the London Blitz. However, Jan Lipley contacted us to say that her mother – his daughter – had a collection of a great many postcards that he had sent home; they make fascinating reading.



Dudley Frank – known to the family as Dick – always sent his cards to his Mother. (This is worth noting. In British, German, French, Russian, Italian and Turkish literature there are many references to injured men, lying unattended in No Man's Land, calling for their mothers.) She annotated each card, in pencil, with the date she received it. She kept one Field Service Post Card that was sent whilst the fighting was still going on; all the other postcards were sent after the end of the War, starting in November 1918 and ending in April 1919. At first sight, the brief text of the Field Service Post Card seems brutally stark, but it is hard to see how it could be improved. Each one of Dick's peacetime postcards was cleared by the Censor (stamped and often signed) though one wonders why that was still necessary.

NOTHING is to be written on this side except the date and signature of the sender. Sentences not required may be erased. If anything else is added the post card will be destroyed.

[Postage must be prepaid on any letter or post card addressed to the sender of this card]

I am quite well.

I have been admitted into hospital
 { sick } and am going on well.
 { wounded } and hope to be discharged soon.

I am being sent down to the base.

I have received your { letter dated _____
 telegram " _____
 parcel " _____

Letter follows at first opportunity.

I have received no letter from you
 { lately
 { for a long time.

Signature }
 only }

Date _____

Wt. W05—P.P.948, 8000m. 5-18. C. & Co., Grange Mills, S.W.

An example of a Field Service Post Card



Handwritten postcard

The Army's postal system was highly efficient, his mother usually received his postcards within three days. Charming, they were simply addressed to "Mrs T Bristow, Speen, Princes Risborough . . .". Conversely, her letters usually took much longer to reach him, and often arrived as a bundle. She could only put his rank, name and service number on the envelope. The Army's postal clerks then had to search for his location. At the height of the War, they dealt with 12,000,000 letters a week.

Shortly after the end of the war, Dick Bristow was billeted in a small hotel in Rue Hanesse, Andenne, Belgium. Across the street was a bookshop that printed its own monochrome postcards, showing pre-War and post-War scenes. Dick started using them to give the family an idea of where he was living; the pictures of wrecked fortresses, ruined Hotels de Ville and once-imposing Chateaux must have been startling to people who had spent their lives in a village of cottages.

There was not much space that Dick could use on his postcards, so sometimes he wrote, in his elegant copperplate script, twice a day. He was a talented artist and describes how the Adjutant had commissioned a drawing from him, and then the Colonel had asked for another. In those deferential times, the family must have been especially pleased. He was sent to Namur – and then back to Andenne – several times and several times his promised period of Leave was cancelled. (During this period, the Army gave priority to married men.) It seems he was given very short notice that he was to be de-mobilised – but perhaps, after so many disappointments, he had chosen not to raise the family's hopes. On April the First 1919, Dick sent a jokey card, written in Franglais. For the first time, he also addressed it to his Father; as an afterthought, and with the wrong accent. Five days later he sent his final card, and set off for civilian life.

Reliable, Friendly Service
Taps, Leaks, Drains, Loos

Any Local Plumbing
Restoration to Renewables

Central Heating & Controls
Gas, LPG, Heat Pump & Electric
Registered for Gas and Electrics

Based in Upper North Dean

Paul's Plumbing
07786 175123



Local to Naphill, Walters Ash
Lacey Green, Speen, Hampden
Hughenden, North Dean



199757

Electrics - Bathroom, Heating, Etc.
Registered for Self Certification

Paul Newman Ltd. 01494 565573

Previous Edition. We asked if the Finger on the top of the Weavers' and Spinners' sign and the one on Eric Gill's gravestone indicated a connection with the community at Pigotts Hill. Nick Wheeler Robinson says he has no evidence of one. Moreover, the Weavers' sign shows with one (Index) finger; the carving on Gill's gravestone depicts the Priestly blessing of the first two fingers joined together. He also corrected a mistake. The typeface "Perpetua" was not named after one of Eric Gill's daughters.

"Best of Speen". Please continue to send pictures to John@SpeenBucks.org. We hope to use the twelve best images on a Calendar for 2015.

Clive Rainbow
01494 488658
rainbows@speen.org.uk

Litter in Speen – surely not!!

As I grow old I find the sight of litter along country roads and to a lesser extent near bridleways and footpaths increasingly unpleasant. Is it an age thing I wonder or perhaps I have more time to speculate why some people suppose it is OK to discard their rubbish into our lovely countryside when they no longer need it?

Fortunately Speen must be one of the cleanest villages in Buckinghamshire if not England. Have you noticed? Walk around the roads of Speen and you would not find it easy to spot any litter anywhere. If you did, it probably wouldn't stay there for long because like me I suspect that there are many others who appreciate our litter free village and want to try to keep it that way. Perhaps North Dean deals with this problem in a similar way.

Sadly the same can not be said for the road sides leading into the village. Who knows whether the Council will arrange a litter pick along our country roads? A very, very low priority I suspect on the list of demands on the annual budget and probably rightly so. Are we therefore destined to look at the tin cans, plastic bottles, cigarette and crisp packets etc. along our roads for evermore? I have heard it said that a few folk chuck litter out of cars to give employment to others to pick it up but I believe that such people don't actually think at all and just do it out of habit.



This photo shows a collection of rubbish collected from only approx 200 yards along Bryants Bottom Road (52 cans, 20 or more plastic and glass bottles etc.) Yes really!

How much cleaner our countryside might be if there was a penny back on each empty container returned to waste centres.

Travelling through the small country roads of Germany last summer, it was a pleasure to notice how litter free they were. I didn't notice anyone collecting litter and I'm inclined to suppose that most Germans find it preferable to discard their rubbish at home. Perhaps their parents taught them to do this or is it emphasised at school? Whatever the reason, we are not doing so well in Britain.

If I'm walking our roads out of Speen for exercise (rather than pleasure or both!!) I will sometimes take a bag and gloves with me and pick up litter as I go. It is quite easy and mildly satisfying. I may have filled one or more bags and had to leave them behind a tree until I can pick them up by car and put them in the bin. In January I walked along Spring Coppice Lane and picked up 60 tin cans amongst other things. Remarkable really. Who goes along this lane drinking so much Red Bull, LSV Energy Drink and Beer? It is the same travelling to Princes Risborough through the Hampden Woods. Cans, cans and more cans. Cyclists, joggers and walkers must find all this litter particularly horrid as well as motorists. Perhaps later this year I will walk this road collecting litter, although I will be delighted if I find someone has managed to do it before me. It all makes Buckinghamshire a better place in which to live.

David Clay



A bespoke management training and coaching company established in 1997, working in the private and public sector.

Recognise and capitalise on your potential

Do you need to give yourself the space to broaden your thinking, further develop your skills, confidence and competence in today's demanding environment?

We offer a coaching service that is confidential, flexible, targeted to meet clear goals and expand your skills base. We provide objective executive coaching that will support your professional, business and personal development.

In-house training

Maximise the level of talent skills and performance in your organisation. We specialise in the design and delivery of practical, interactive and results focused in-house training. Let us help you develop your people.

Check out our website at www.jml-training.com
or call us on **01494 488787** for further information

VILLAGE ENVIRONMENTAL SERVICES

Proprietor: Dennis Cook

**BLOCKED DRAINS CLEARED
REASONABLE RATES
NO EXTRA CHARGE FOR EVENING,
WEEKEND OR BANK HOLIDAY CALL-OUTS
24 HOUR POLITE, COURTEOUS SERVICE
C.C.T.V. DRAIN SURVEYS**



**Tel: 07850 635 844 between 9am-6pm
01296 624 221 at all other times
Fax: 01296 620 222**

Full Public Liability Insurance



DOMESTIC DRAIN SERVICE



Seasons

F A R M S H O P

OFFERING A HUGE VARIETY OF LOCALLY
SOURCED, HIGH QUALITY PRODUCE

Supporting local producers, farms, bakers and more!

PUT A SPRING IN YOUR STEP AT SEASONS!

Fresh meats, cheeses and deli products



HIGH QUALITY MEAT

Introducing Click and Collect Meat boxes. Selected boxes of our high quality meat packaged into a box to suit every household need, from family breakfast boxes to Easter.



NEW EXCITING OFFERINGS

We are cooking up a storm!
Now offering homemade Pork pies and Sausage rolls with exciting twists.
Come in and try!



CHEESE AND DELI COUNTERS

Only the best produce is selected for our shelves. New in is an exciting range from the Cornish Charcuterie, including incredible Pates in various flavours! Amongst many others.

'The best farm shop in the Chilterns!'

Opening Hours: Monday to Saturday 9.00am until 5.30pm



North Dean, High Wycombe, Buckinghamshire, HP14 4NQ.
Tel: 01494 562 481 • alison@seasons-farmshop.co.uk
www.seasons-farmshop.co.uk

Heppelthwaite

Green Building Solutions

It now pays to go GREEN!



You could qualify for the RHI (Renewable Heat Incentive/Ofgem) Contact us now for hassle free advice and a **FREE** estimate

We specialise in providing bespoke renewable energy solutions ensuring you receive the best savings, cash returns and reduction in carbon emissions.

Got an Oil boiler? Now is the best time to **change to Biomass**

For an information pack please contact us on:



01628 533 550

or visit our website

www.ecogreenbuildings.co.uk

Heppelthwaite Green Buildings is part of the Evans Group.
A family run company specialising in Plumbing & Heating since 1948.

A Surprise 80th Birthday Party

Guess the name. Here are your clues: a Speen resident for over 30 years, long track record in baby- and pet-sitting, loves quizzes and crosswords, passionate about sport (particularly football), adores owls, and is a loyal supporter of the village shop and community bus.. It's Jo Banks, of course.



Jo may have hoped to avoid any local excitement about her 80th birthday, by flying to the USA for a family visit at the time in question. But she had reckoned without the determination of her friends that this milestone should not pass without due celebration. Jo's absence provided the ideal interlude to plan a birthday tea-party for her return. As in other areas of village life, Speen Stores was the vital hub for executing the plan and maintaining secrecy!

The outcome was a very happy gathering at Speen Chapel on March 8th, with over 40 people singing happy birthday as a bemused but delighted Jo made her entrance. We appreciated the kindness of the Deacons in allowing us to use this welcoming space. Jo's unswerving support for Liverpool Football Team offered a strong clue for the decorations. These included balloons in the Team colours, and a splendid banner – skilfully designed and made by Maureen and Jacqui Laing – bearing the Liverpool FC motto, "You'll never walk alone". Many hands made light work of baking a delicious array of cakes and cookies and



Jo and friends

helping the party to run smoothly.

Jo is clearly well-known and well-loved by many in the village: a familiar and friendly face, a good neighbour and willing helper.



Christopher Boyce with Jo, expressing surprise on entering the Chapel and seeing the special banner

Fewer, perhaps, will be aware of Jo's wide-ranging life experience. Among a variety of jobs she has been a motor racing organiser, nursery teacher, hotel owner, carer, and kitchen helper at the King William. She lived for a time in South Africa and now regularly 'crosses the pond' to visit her son and daughter-in-law and two grandchildren in the USA. Perhaps this accounts for the great store of general knowledge she is able to exploit in local pub quizzes.

Jo's 80th birthday party was above all a wonderful tribute to Jo herself. But it also showed that Speen knows how to celebrate – and how to keep a secret!

Sue Taylor



Risborough Carers Ltd

Compassionate Care in your Home

Risborough Carers are your local private family run Home Care Provider based in Thame, Oxfordshire. We passionately believe in promoting Client's dignity, privacy, safety, independence and choice.

21 years' experience of excellent service from our professional and highly trained staff.

Registered and Compliant with Care Quality Commission.

01844 212 271

www.risboroughcarers.org.uk

Services provided:

- **Personal Care**
(including assistance with morning wake up/bedtime tuck up routine, bathing/dressing, medication reminders)
- **Specialist Care**
(including Dementia, Alzheimer's, Palliative Care)
- **Companionship Services**
(including accompanying to appointments with shopping, eating out and other social outings, take part in hobbies and crafts)
- **House Keeping Services**
(including light housework, laundry, meal preparation)
- **'Live-In' Care** – a highly trained companion who will stay with you 24/7

1st Floor • 1 Thame Business Centre • Wenman Road • Thame • Oxon • OX9 3XA

WILDLIFE WATCH

The winter period has produced some interesting sightings but also a significant lack of other records. Whilst the winter seemed quite long the very harsh conditions never really became severe or prolonged. As a result many of the birds that we normally expect to see in our gardens never appeared. No Redpolls, Siskins or Bramblings have visited our garden at all this year with only very small numbers recorded across the county. The birds that did come south tended to remain in the local woods particularly at Great Hampden. Equally no overwintering Blackcaps have been present at my bird table although up to four have visited a feeding station in Walters Ash. My own table has been busy with the usual Blue Tits, Great Tits, Coal Tits, Long tailed Tits and the less common Marsh Tits as well as Nuthatches and the regular Great Spotted Woodpecker.

The activity around the bird table has attracted the local male Sparrowhawk. A successful attack in November saw him take a small bird whilst a Blackbird survived a second attack that I witnessed. More recently I watched a Sparrowhawk in the corner of the garden, which dropped down into our neighbours garden and emerged with a Jay which was still squawking as it was being plucked at the bottom of the garden. This is quite a large prey item for a male Sparrowhawk. Looking at my photographs later on I realised that this must have been a follow up attack since the photographs revealed the Sparrowhawk had blood on its bill before dropping onto the Jay. The initial attack must have been in the woods with the injured Jay trying to hide in the security of a garden conifer. Another bird of prey that surprised me at the end of February was a Buzzard that twice visited one of our garden bird tables which was a first for the garden. This left the resident female Mallard looking very perturbed. A further new record for me for College Plantation was a pair of Stock Doves that have been seeking a nest site since mid-February. These birds are very difficult to approach and are sleek fast fliers but their call is quite distinctive and I can now hear when they are about. Another woodland bird that is extremely difficult to see is the Woodcock due to its excellent camouflage, but I did record one at the end of February. Elsewhere in the local woods Mandarin ducks have still been recorded and are known to visit at least one garden in Great Hampden. Meanwhile I have had an additional new bird record for our own garden with a Moorhen being attracted to the pond. It stayed for about four days. The local Heron has also made visits both to our pond and others right at the heart of the village.

Stock dove



The winter period is hard for the local deer with very limited food supplies and little vegetation to hide away in. Small groups of two or three Roe deer have been seen together on occasions and some of these seem to have taken up residence in North Dean. These animals are vulnerable to disturbance that can drive them onto local roads. A young Roe buck died as a result of a collision with a car at Redland End recently. If one crosses the road in front of you be aware that a second or third animal may well follow. Perhaps the most interesting mammal sighting of the winter was a possible Polecat at Keepers Wood not far from Redland End seen by Andy Thomson in broad daylight close to the roadside in January.

Please let me know of any interesting sightings or photographic opportunities. I hope to feature images of much of our local wildlife in a talk at the 2015 Speen Festival so keep an eye open for the date ----Peter Symonds (01494 488016)
--symonds@speen10.freeserve.co.uk





RISBOROUGH AREA COMMUNITY BUS

Our services to Princes Risborough run on Tuesdays and Saturdays

Depart Risborough High Street 0850, arrive Speen 0905, arrive Risborough High Street 0929

Depart Risborough High Street 1135, arrive Speen 1150, arrive Risborough High Street 1215

On request pm service on Tuesdays only depart Risborough 1605, depart Speen 1625, arrive Risborough 1649

The bus is available for Group Use evenings and weekends for up to 14 people. Our unique door to door service can be used for clubs, families & friends; for your own events or for sports, shopping, theatres and parties. Ring Georgina on 07941 963097 for information and bookings

We also run regular outings to places of interest including Garden Centres, Bicester Village and tours of the Chilterns. See <http://www.bucksvoice.net/racb/> or call 07941 963097

Christine Dunnington photography | equine portraits



unique - beautiful - guaranteed to impress - guaranteed to
delight any horse-loving owner

h 01494 488203

m 07713 286358

e info@cdphotos.co.uk

w www.cdphotos.co.uk



Which was your first Speen Festival?

It's a bit like remembering the first record you ever bought (ask your parents if you have only ever downloaded music); most villagers will be able to recall when they moved to the village and what the show was at their first Speen Festival. Was it Grease in 2013?, The Dreaming in 2011? Honk in 2009? Three Cheers for Mrs Butler in 2007 or perhaps you remember the first Speen Festival run in 2001 which was based on a festival founded by villagers Martin and Marjorie Stockley in 1999 to celebrate the passing of the Millenium. (One free Beechdean ice cream for whoever can fill in the shows for 2005 and 2003!) Maybe this will be your first, The Railway Children; in which case, welcome to Speen, block book 6-20 September in your diaries now.

This run is an incredible achievement for our little village and who knows, this year may be the last, but so far every time an amazing array of locals emerge to make it all happen. Thankfully Sam and Kate Laughton are again leading the charge for this year and it looks set to be another outstanding celebration of the outdoors, art, literature, science and musical creativity. Some of the events attract audiences from way beyond the village and the response is often 'this is the first time I've been to Speen, what an amazing village!' It is less pleasing when people in the village say on the last day of the Festival, 'I wish I had known about the Festival, looks like it was really good!' So don't keep it to yourself, spread the word.

What's your favourite event?

We have some old favourites returning, but this year you will have the chance to have a new favourite as we have some exciting new events to inspire you, surprise you and maybe even get you moving!

BikePark Challenge
Survival Night
Prom in the Playing Fields
Wildlife at Large
Words & Music
Teatro Unfortunato
BeCrafty

FestivalDanceOff
BookFest
Science Matters
ArtFest
QuestionsWorthAsking

What's your reason to volunteer?

People who have helped with the Festival in the past have expressed many different reasons for doing so and in return have gained a range of benefits. Which one works for you?

Use existing skills to help my community
Give something back
Gain new skills
Build a portfolio
Get some charity work on your CV
Find some like minds
Do something cross-generational
Pass on some skills
Do community work for Duke of Edinburgh's
Meet new people
Use your time before going to University
Network for a new job

So we are looking forward with Speen Festival 2015 and the fun starts now; because no planning meeting happens without a convivial setting and normally a bottle of wine, so if you are intrigued, have an idea and want to know more about how you can be involved have a look overleaf, see where you can get aboard and contact director@speenfestival.org. Or maybe you want to SPONSOR this amazing community event, we are all ears.

SPEENFESTIVAL2015

All about Your



SAM & KATE LAUGHTON - Festival Directors • NICK KNIGHT - Festival Treasurer

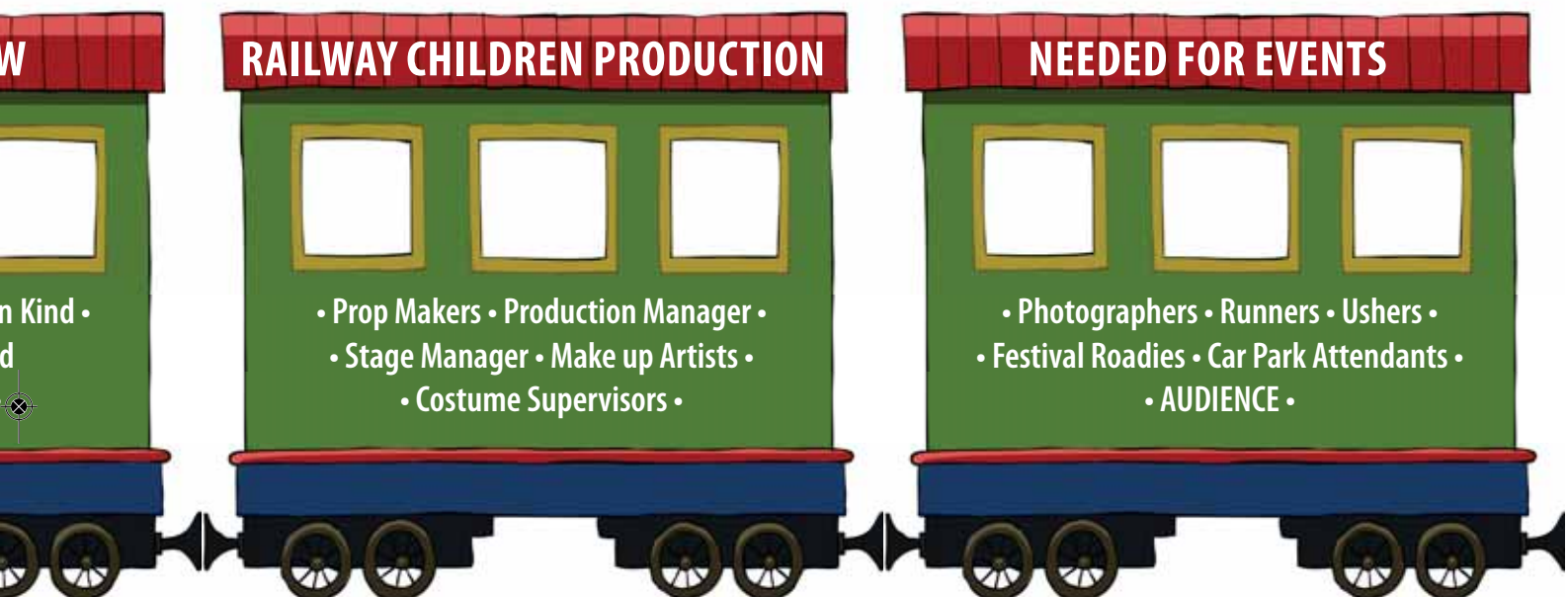
??? Festival Box Office Manager ??

Your 2015 festival brings you so But we can't do

Words & Music • Survival Night •
Prom in the Playing Fields •
Inspiring Talks • SpeenSchoolFe



ard please Festival Needs YOU!



er • PHILIP SUTER - Festival Sponsorship • CAT COOK - Festival Marketing & Publicity

? Festival Front of House ??? Festival Logistics

ome old favourites and some new o it without you!

Bike Park Challenge • Craft Sessions
ArtFest • BookFest • Dance Off
st • Wildlife Event • Science Matters



Putting the Railway Children on the right tracks

Finding a show for the Speen Festival, if you don't have time to write one yourself (like the Festival Founders the Stockleys always did), is a challenge in itself, for our venue is quaint, the cast varied in age and experience, rehearsal time sporadic, performances slap bang at the beginning of a new school year during the 11-plus (time to abolish that?) and a production team attempting to hold down full-time jobs.

But the challenge is a reward in itself and seeking a contrast to Grease we eventually happened upon a musical of *The Railway Children*, first produced at the Sevenoaks Playhouse in December 2005 based on the novel by E. Nesbit. All, except some of the younger members of our cast, are familiar with the book, the iconic film and many may have seen the recent stage adaptation set on real station platforms in Waterloo and Kings Cross (in which young Thomas Hull from Speen is currently appearing). We may not be able to offer you a real steam train, or HS2 mock-up equivalent, but having recruited Lucy Entwisle as our designer we are confident that Speen, collectively, will assist in finding props and creating tunnels to satisfy all. We will be holding two afternoon workshops for prop-making on Monday 20 and Tuesday 21 July for ages 12 plus, including adults, so do come along and join in.

The Railway Children was published in 1906 and has never been out of print. Its author was a rather remarkable woman. A combination of traditional values, being a child of the Victorian era, but also a founder member of the Fabian Society, Britain's oldest political Marxist-inspired thinktank, and who led an extraordinarily bohemian personal life.

The book is both a retreat, a celebration of the rural idyll of an England that never existed, and reflection of reality, grounded in the political and social truths of the time: the characters and story are inspired by the Dreyfus Case and a Russian exile Stepniak who was a friend of the family. Nesbit's memories of childhood in Kent, the loss of her own father at the age of 4, and her mother's struggles with poverty and illness also imbue the work.

We begin our journey in Speen of 2015 with a storming cast of forty and for many, this will be the first experience of our community stage. They deserve all the help and cheering on as possible, so do come and see, audience and support us in whatever way you can. Check out our "Great Green Dragon Breathing Fire" which attempts to explain the many ways in which you can help, both big and small.

Over to our cast about why they get involved:

Michael Preston-Whyte – "It's a great opportunity to get involved with the community and it's also a place to meet new people"

Elizabeth Edwards – "One of the few opportunities where different age groups in the village can come together which is really important. Plus it's great fun!"

Will O'Brien – "I really enjoy the Speen Festival and I love taking part, it's great fun and I always look forward to it."

Chris Entwisle – "To give something back to the community."

Amy Entwisle – "It's so much fun. Everyone comes to watch!"

India Andrews – "I wanted to socialise with some people from Speen and they are always so good!"

Jessie Laughton – "I am really looking forward to this year's production; it's a really good experience!"

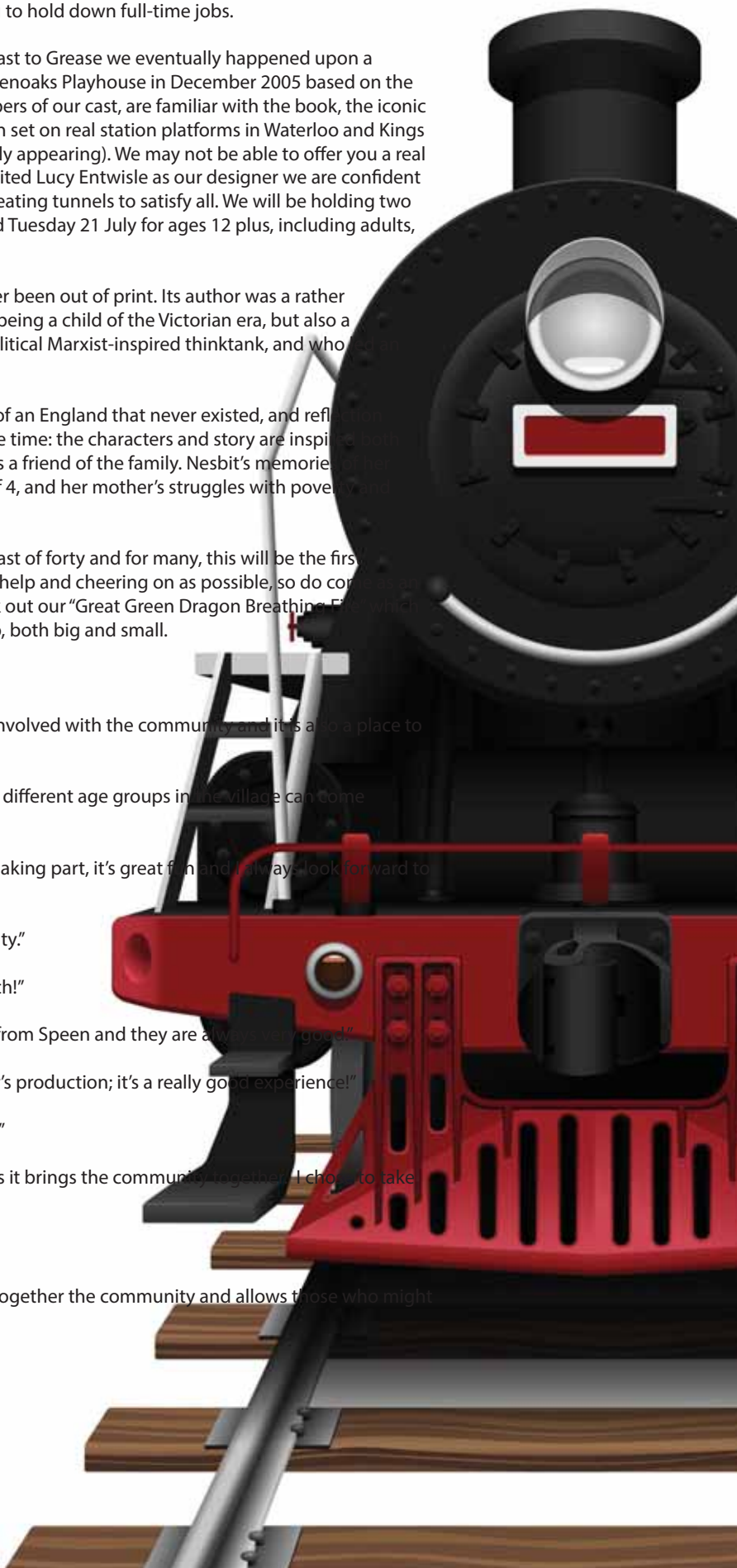
Henry Andrews – "I am here to have fun and enjoy acting."

Charlie Thorn-Davis – "It is good to have the Speen play as it brings the community together. I chose to take part as I knew it would be fun."

Mel Salmon – "A great experience to work with all ages!"

Alice Wilson – "A brilliant experience for all which brings together the community and allows those who might not otherwise to indulge in their thespian side ..."

Kate Laughton
director@speenfestival.org



Living with Arthritis

Chris Wright talks on improving our quality of life when suffering from arthritis.

As a Personal Trainer I see and hear people who suffer everyday from arthritis; a few small changes can improve our standard of living for a much longer period of time. I would like to share some of those with you.

You can't always prevent arthritis. Some causes - such as increasing age, family history, and gender (arthritis is more common in women) are out of your control. Yet there are a few health habits you can change to reduce your risk of developing painful joints as you get older. Many of these steps - like exercising and eating a healthy diet - prevent other diseases too.

Exercising regularly is one of the best things you can do to take care of yourself and your joints. Here is why exercise is so important: People who exercise live longer, with or without rheumatoid arthritis.

- Regular exercise can actually reduce overall pain from rheumatoid arthritis.
- Exercise can keep your bones strong. Thinning of the bones can be a problem with rheumatoid arthritis, especially if you need to take steroids. Exercise helps bones keep their strength.
- Exercise maintains muscle strength.
- Regular exercise improves functional ability and lets you do more for yourself.
- People with rheumatoid arthritis who exercise feel better about themselves and are better able to cope.

Is Exercise Safe If You Have Rheumatoid Arthritis?

Yes - certain kinds of exercise are proven to be safe for people with rheumatoid arthritis. There are three types you can do; stretching, strengthening, and conditioning.

- Stretching exercises are the simplest and easiest. They consist of stretching and holding different joint and muscle groups for 10 to 30 seconds each. Stretching improves flexibility, and daily stretching is the basis for any exercise program.
- Strength exercises involve working the muscle against resistance. This can be either with or without weights. Resistance training strengthens the muscle and increases the amount

of activity you can do pain-free.

- Conditioning exercise, also called aerobic exercise, improves cardiovascular fitness. There are countless benefits to aerobic exercise! Among them, it makes your heart and blood vessels healthier, prevents disability, and improves mood and well-being. Good conditioning exercises for people with rheumatoid arthritis include low-impact activities like walking, bicycling, or using an elliptical machine. Any of these will get your heart pumping.

After being cleared by your doctor, you should try to do 20 to 30 minutes of low-impact conditioning exercise on as many days as you feel you can. More is better, but any amount is better than none at all!

We are here to support you every step of the way for any more advice please contact us.

Chris Wright
Owner and Personal Trainer
The Fitness Space Hughenden Valley
chris@thefitnessspace.com

Anyone for Tennis?

Do you enjoy watching Wimbledon fortnight and keep promising yourself this will be the year when you learn to play? Do you regret hanging up your racket a few years ago? Do you have children you think could become the next Andy Murray? Or do you just want to encourage the family to pick up a healthy and sociable pass time that can be enjoyed together?

Speen Tennis Club is a long-established village facility which counts over 50 local families as members. We are in the process of sending out membership forms for the coming year and are keen to encourage new members of all ages and abilities.

The court is well kept and has good availability throughout the year. We have organised coaching sessions for juniors during the summer term after school and can help to arrange individual or small group coaching for adults on request. We also hold occasional ladies tennis mornings against our neighbouring club in Lacey Green, which are designed to be informal, relaxing play.

We offer Family, Individual Adult and Junior memberships at very reasonable rates. For further details and any other information, contact Philippa Lane on 01494 488453 or lanetribe@yahoo.co.uk.



**BRAND NEW DANCE CLASSES
IN LACEY GREEN!**

Bumble Ballerinas and Tiny Tappers
Ages 2-4

Ballet (various grades)
Ages 5-11

Stretchi-Flexi
Ages 5-11

FREE TASTER CLASS!

Natalie Harris (principal)
07855 296242
natalie@njdance.co.uk
www.njdance.co.uk

**WHY NOT TAKE
ADVANTAGE OF A
FREE QUOTE ON ALL
BOILER SERVICES,
INSTALLATIONS &
REPAIRS.**



PLEASE CONTACT Ian Appleby
Telephone : 01296 290 700
Mobile : 07964 041 655
tapsuk@btinternet.com

NO CALL OUT CHARGE PLUS A FREE NO OBLIGATION QUOTE

We pride ourselves on a friendly, reliable service catering **for all your plumbing and heating requirements.**

Our plumbers/engineers are City and Guilds qualified and fully insured. Based in Aylesbury we cover a wide area. So feel free to contact us to discuss how we can be of service to you.



542440

PROVIDING A WATER-TIGHT SERVICE

Show us your home
and we will show
you the buyer.

Because it's important to you.

01494 611382
www.hamptons.co.uk



Beyond your expectations



By the time this update appears, we shall have celebrated the most important event in Christian life, Easter, when we remember Jesus' ultimate sacrifice and the hope that his resurrection gives us of a better life to come. We hope everyone had a wonderful Easter and that some of you were able to participate in the services and events held at the Church.

It has been a busy and yet sad time in the life of the Church since December. Ian Greig, our Pastor, resigned from his position in December. We want to acknowledge and thank Ian for his contribution and leadership over the last couple of years and to wish Ian and his wife, Alison, the very best for the future.

We are very fortunate to have Heather McIntyre to lead the Church for the immediate future. Heather lives in Prestwood and has three "grown-up" children. Up until recently Heather was the pastor at Wendover Church. Heather will guide us as we start the process of searching for a new pastor.

Our mission remains to be an outward-looking Church and one that is first and foremost relevant to the local community which we serve. It is therefore, encouraging to reflect on some of the happenings that have taken place in recent months and to give you a 'heads up' on some events that are in the pipeline.

Nine extra special guests enjoyed Christmas lunch, followed by a showing of 'Singin' in the Rain' on the big screen in the Chapel.

On 21st December a special Silent Night service was held marking the 'Moment of Truce' between British and German forces on the Western Front on Christmas Day 1914, this service drew attention to the plight of today's victims of war. The sum of £625 was generously given to Tear Fund in support of displaced people in Syria.

Christmas Eve saw a record number of villagers and visitors in the Church to sing carols and listen to a service that was led by our talented young people. We also held a late evening mass to reflect upon the wonder and mystery of Jesus's birth.

Kate Vale, Janis Hearn and Louise Wilson visited Moira McLure in Ethiopia in February. Moira, whom as many of you will know, lived for

several years in North Dean, had a calling from the Lord in 2008 to move to Ethiopia where she works with families devastated by the HIV/Aids crisis. Moira now runs the South Gondor Mother and Child Project in a remote region of the country, close to the source of the Blue Nile. The charity provides jobs, training and microfinance to widows and single mothers trapped in poverty. It also provides essential healthcare, preschool education and parenting skills. You can find out more by visiting www.lifeinfulltrust.org/mother-child-project.

James Entwisle visited the Agape charity in Hyderabad in late February which thanks to your generosity continues to thrive and make a huge difference to lives of some of the poorest people on earth - including 360 children now attending Agape School.

A surprise birthday party was held at the Church on 8th March to celebrate Jo Bank's 80th birthday. Some 50 people came along to make Jo blush and laugh and we had great feedback on how welcoming the Church is as a venue for such special moments in life.

Jo was also among the ten special villagers who attended a pre Easter tea at the Church. We are grateful to Gwen for leading the hymns which were sung with great gusto before the tea was served and good conversation began.

Looking forward, Kevin Brown, who is a member of the Church and a cornerstone of our worship band, will be giving a concert - 'Ballads from the Heart' - on 3 May at 7.00pm. He is back by popular demand having packed out the Church in May 2013. Kevin is not only a great guitarist, but a very accomplished songwriter.

We also have a couple of regular happenings which may grab your interest. Every Thursday, 'Knit and Natter', takes place at the Church at 7.45pm and people of all ages and all skill levels are warmly welcomed. For those of you who might prefer a time of quiet reflection, the Chapel is now open every Saturday morning from 7.00am to 9.00am for prayer.

You can find out more about the activities, contacts and life of the Church by visiting www.speenchurch.org

Alastair Blundell
01494 488509

Does the thought of your next heating bill leave you **cold?**

It is recommended that your home is heated at 18°C (65°F). Place this card in your living room or bedroom to see what temperature you're at.

As the price of fuel increases, energy bills can become unmanageable.

To ensure your energy bills are kept under control or for advice on keeping warm, call the Affordable Warmth Helpline. We give free, impartial advice on:

- Reducing your energy bills
- Heating your home affordably and efficiently
- Advice and assistance with switching energy supplier
- A free talk for your group

Some improvements, such as wall insulation or boiler replacement can take a few months to install, so don't wait until it gets cold to contact us; we're here for you throughout the year!

Do not place this card near a heat source or in direct sunlight.



@AffordWarmth



Affordable Warmth



NATIONAL
ENERGY
FOUNDATION

Telephone: 0800 107 0044

email: awn@nef.org.uk

Coles & Blackwell

Car Service & Repairs

Book online at:
www.colesandblackwell.co.uk

Quality car servicing and repairs much closer than you think!

Where are we? You will find us 300 metres down the small lane opposite the top of Bradenham Wood Lane in Walters Ash, High Wycombe HP14 4UX

Established in 1959



Servicing

Did you know you can get your car serviced by us without invalidating your manufacturers warranty? Legislation passed a few years ago means that you can now choose any garage of your choice to service your vehicle.

Courtesy cars

We have a fleet of new loan cars at your disposal whilst we service your own car or repair bodywork damage. Best of all - they are FREE OF CHARGE! All part of the service you come to expect from Coles & Blackwell

air conditioning	_____
mot testing	_____
vehicle servicing and repairs	_____
crash repairs	_____
tyres, clutches & brakes	_____
computerised diagnostics	_____
batteries & exhausts	_____

Open Monday to Friday 9:00am to 5:30pm
Saturday 8:30 am - 12:30pm

01494 563102

Knit and Natter

Warmth and love from Speen to Ethiopia

Speen's knitting group, Knit and Knatter, have created a colourful mountain of blankets, cardigans and hats to keep babies toasty warm in northern Ethiopia. A small group from Speen Church filled a large suitcase with the hand-knitted clothes and blankets, and another with toys and clothes donated by Speen School families, when they visited The South Gonder Mother & Child Project in February. The project teaches young single mothers to support



Resourceful teenagers in South Gonder knit on wire offcuts



The project provides a Montessori pre-school education to rival any in the UK

themselves and their families with income generation activities such as spinning, weaving, breadbaking or animal husbandry, and provides a wonderful Montessori pre-school for their young children.

Knit & Knatter meets at Speen Church alternate Thursdays – details at www.speenchurch.org

The South Gonder Mother & Child Project is supported by Lift, registered charity no. 1160576. Details at www.lifeinfulltrust.org

Louise Wilson

Hughenden Builders

Established 22 years

All Building Works Undertaken

- Extensions.
- Alterations.
- Loft Conversions.
- Roofing – all types.
- Drives, Block paving, Tarmac etc.
- Patios, Walls, Garden landscaping.
- Plumbing, Plastering, Carpentry.

Planning Service. Clear & Concise Plans

Single Storey £150.00

Two Storey £300.00
(plus council fees)

Free detailed estimate with drawing.
Planning fees returned if tender accepted.

171 Main Road
Naphill

Tel: 01494 562937
01494 438057

Thank you, to all our customers, old and new, and to the many well wishers who sent cards and emails to Malcolm and I on our retirement. We are very grateful to you all for your custom over the past 27 years and we have enjoyed being of service to you all and the wider community.

Olivia
The Old Plow Bistro and Restaurant, Speen



**SPRINGLINE
CARS** PRIVATE HIRE

- | | |
|----------------------|--------------------|
| • Airport Transfers | • Personal Service |
| • Events & Occasions | • Owner Driver |
| • London Trips | • Local Knowledge |

RISBOROUGH

01844 27 44 74

Know the voice, know your driver



ALLIED HEALTHCARE

As a population we are getting older and many of us will be faced with finding nursing or personal care for an elderly relative or planning our own future care if we become incapacitated. Bucks, residents are increasingly making a choice, where possible, of living in their own homes for as long as possible and the local branch of Allied Healthcare is aiming to make this option easier.

The local branch of Allied Healthcare has been operating for over 21 years, based just outside of High Wycombe, has a proven track record of providing domiciliary care in the community.

Increasingly there are fewer hospital beds and long term care homes that are accessible to those needing help, support and care, and most people, if given the choice, would prefer to be treated at home with their own possessions around them. We can offer a wide variety of Care calls from 15 minute pop-in call, once a day to

multiple calls or indeed a full time Live In Care.

The offices of Allied Healthcare at High Wycombe are able to help with assessing your needs and advising on all aspects of your care. Before care starts you would be visited by our assessor to ensure that a comprehensive care plan was written and tailor made to suit the needs of the client. This can be for a basic care package to a more specialized and complex packages in the case of a serious illness. We will help you to consider whether you need a full-time carer, perhaps a special bed or other equipment, or maybe additional carers at certain times of the day to help with lifting or turning. If needed you would have the advice of the 'In House' Trainer to advise on specialist Moving and Handling issues. Allied is willing to go the extra mile to provide the highest standards of care. They try to ensure clients build a relationship with a small team of carers rather than having a constantly changing set of faces. They recommend the use of a Keysafe

which ensures a carer, can always gain access to a client's house to provide the care and raise the alarm if needed. All of the Care workers are trained to the highest standard as required by our regulators, CQC and our stringent internal audit team. Many of our workers have training and expertise in specialist areas but if we needed to we would provide training to meet a specific need of a client.

If you would like more information about Allied and the services we offer then call 01494 488040, and we can meet with you for a no obligation visit or provide you with details and costings of our services.

Work for Allied Healthcare

We always have a need for additional employees to support the services we offer. If you are interested or know of a friend who is interested in joining us as an employee we offer an attractive package. We provide care across the High Wycombe and surrounding areas.

Care & support in the comfort of your own home

Do you or a relative require care or support to live your life the way you choose? If so, Allied Healthcare can help. We have been offering an excellent dependable service in the Buckinghamshire area for over 21 years.

SELF DIRECTED SUPPORT & PRIVATE CLIENTS WELCOME

Full assessments carried out before care commences. All our staff have extensive training and have enhanced CRB checks. We also offer call monitoring.

The range of services we offer

- Visits (1/4, 1/2, 3/4, HOUR)
- Live in/24HR care
- Nursing care
- Holiday cover
- Waking nights/sitting
- Assisted bathing
- Light household duties & shopping
- Convalescence/respite



All about you

For more information or assistance please call

01494 488040 / 01494 488141

Email: highwycombe@alliedhealthcare.com

If you are interested in becoming a Carer or working with Allied Healthcare then please call the numbers above for more information and an application pack.

Allied Healthcare is an equal opportunities employer and is regulated by the CQC. Allied Healthcare is committed to safeguarding and promoting the welfare of children, adults and young people and expects all staff and volunteers to share this commitment.



Personal Perspectives

Some personal perspectives from Roger Beavil, a Parish Councillor 2011–2015 and Chairman 2013–2015

In my particular Parish Ward (for the villages of Naphill and Walter's Ash) there is a magazine/newsletter which is published 10 times each year. I decided as soon as I was elected, in May 2011, that I would contribute an article regularly to the 'Gazette', not to describe the main decisions taken by Hugheden Parish Council (HPC), but to give the reader a 'feel' for what it might be like being a Parish Councillor.

Today's article, from one person's perspective, aims to encourage you to put your name forward as a prospective Councillor, explains where you might see extracts from many of the thoughts and anecdotes found in articles published in the Gazette over four years, and encourages everyone of voting age to take advantage of using your democratic right to vote, if your Ward is to hold a 'contested election'.

In the build up to the local elections of May 2011, I was asked if I would consider standing for election as a Parish Councillor. My immediate response was rather negative, since I knew almost nothing about what Parish Councils do. I then discovered that there are a number of reasons why anyone might consider becoming a Parish Councillor. Not the least relates to the fair distribution of public money, on which decisions are made on behalf of the local community. In addition, the collective voice of the whole Council can often be helpful in encouraging other organisations (Wycombe District Council, Transport for Bucks, Bucks County Council, for instance) to consider action which we believe will be in the best interests of our community. You would also learn a little of how 'local government' works, and be part of the 'democratic process' which is at the heart of much that we cherish, even when our personal view is not always held by the majority.

As you might well know, HPC is a rural parish, to the north-west of High Wycombe, with around 3,500 households and 9,000 residents, mainly living in a number of villages. At maximum there are 15 Councillors, with either 3 or 4 in each of four Wards. To help things there is a full-time Clerk plus a part-time Deputy and a part-time Clerical Assistant (a post created only in 2014). In addition to Full Council which meets on 11 occasions each year, together with the odd ECM (Extraordinary Council Meeting), we have three standing committees: Planning (meeting every 3 weeks), Environment & Services (bi-monthly) and

Finance & Administration (bi-monthly), together with Working Groups (when required). Some of the services we provide relate to playgrounds, maintenance of allotments, Garden of Rest, open spaces, and some bus shelters, dog bins, and street lighting. Hedge trimming and grass cutting where it is our responsibility makes a huge visual impact, since we are in the heart of the Chilterns, and we are currently being invited to take over more of these responsibilities.

Like all Parish Councillors, I am a volunteer, and have a life outside of the Parish, with interests that include Church-related music and a variety of sports; and I've had a fiction novel published via Amazon, called 'Uniquely Red Secretly Blue'. The time devoted to HPC is flexible, but you should be prepared to attend all or most of the Full Council meetings together with those for any committees or working groups that you have volunteered for. Beyond that, it is up to you to try to keep in balance the various aspects of your life: family, social, work, sport, HPC, etc. Allocating a fair share of time to each is not always easy, and has probably been the main reason why we've lost some of our other Councillors over the years. Getting these into balance is probably the hardest aspect, and several Councillors have resigned since 2011. I have decided not to stand in May for re-election as a Councillor. It's been a hard decision to make, and I thank you for the general support I've had, particularly on certain initiatives. However, there are a variety of other things which have not received their fair share of my time and effort. I will continue to ensure that the build-up to elections, whether contested or not, will run smoothly and will hope for the active support of many parishioners.

So, if you'd like to know more about volunteering to become a Parish Councillor, please contact our Clerk, Peter Wetherman, on HW 715296. In addition, a single file of many of my earlier 'personal perspective' articles is being made available on our website, www.hughendenparishcouncil.org.uk, then the link to 'News', to give you one person's view of being a Parish Councillor.

Finally, please try to vote if your Ward has a 'contested' election, with more candidates than vacancies. Unlike the rest of Local Government, almost without exception Councillors are 'independent', and try to remain so even if they also stand at District or County level with the backing of a political party. The whole emphasis at Parish level is that of trying to work together for the benefit of the local community.

My best wishes to you.

Roger Beavil



Premier
Architectural Joinery



Conservatories



Bi-Fold Door Sets



Doors and Porches

Premier Architectural Joinery Ltd

Ladymead Farm Estate
Quainton, Nr Aylesbury
Buckinghamshire
HP22 4AN

T - 01296 655555 Opt 6

E - u2us@premieraj.co.uk

W - premieraj.co.uk



Hardwood Windows



Gates



Roof Lanterns

Traditional Hardwood Joinery with a modern approach - free advice!

exclusive hand-painted kitchens

MANUFACTURERS OF
FINE BESPOKE KITCHENS
RESTORATION & REPAINTING OF EXISTING KITCHENS



FITTED AND FREE-STANDING FURNITURE

PAINTED KITCHENS NAPHILL

07768 975 323

johneasterling4@gmail.com

Down on the Farm

In all the years we have been farming we cannot remember a later Spring. Even in 1963-4 temperatures had started to rise by the end of March. What does this mean for farmers and gardeners? Those growing spring cereals will have been helped by the dry conditions and made good seed beds, so as long as the rain comes soon, all will be well. Sheep farmers will probably have had to trough feed their ewes, as without a plentiful supply of grass, the ewes will not produce sufficient milk for the lambs. Driving back from Cornwall on 25th March, we did not see any cattle out in the fields . . . unheard of for the time of year and a big extra expense.



Farmers are always complaining about the weather, but this year they are shouting even louder about the government's mishandling of the new computerised arrangements for applying for the European Rural Payments. After the fiasco when in the region of 10 billion pounds was lost trying to put the NHS records on line, one would assume that they would not make the same mistake again. Although many places in remote areas do not have broadband, Defra announced compulsory on line application, forcing non broadband applicants to employ expensive agents. After two months of unsuccessful efforts to complete our application Defra announced abandonment of the scheme and a return to the old system of form filling. This time it is only £164 million down the drain!

At the risk of upsetting some readers I must return to the question of badger culling. TB has spread eastwards and is affecting cattle and badgers as near as Oxfordshire and south of the Thames. At the present rate of spread we will be infected soon. Until a vaccine is produced, the only way to control the disease is to kill badgers and infected cattle. Culling has been successful in Ireland and New Zealand under conditions not dissimilar to our own, so we must continue with it here. The Badger Protection Act was introduced (quite rightly) to protect badgers against badger baiting, but since then countrymen have not been allowed to keep their numbers in control, as we

try to do with foxes, deer and grey squirrels. Even if badgers did not contract TB, their numbers would still need controlling because the days are long gone when bears, lynx and wolves hunted them. Few people realise that the loss of hedgehogs, ground nesting birds, leverets and many species of bumble bees is largely due to badgers (whose numbers have increased fourfold since we started farming) eating them. The price of milk is still rock bottom and will sadly result in even more small farmers going out of business. The UK is only 85% self-sufficient in dairy products, but we are now part of a global market and the demand from China has fallen off so the price has dropped. Our milk which is surplus to the requirements of Beechdean ice cream goes to the Arla factory near Aylesbury; Arla are trying hard to market dried milk in the under developed areas of the world where, when mixed with water, it provides much needed protein for everyone.

The national press regularly publishes articles which one day 'prove' that dairy products are good for you and the next that they are bad! For our family, milk is the only food which provides all the nutrients one needs (bar iron) so we will continue to consume milk and all its products.

Gill Kent

Speen Helping Hospices Group

Friday 15th May is the date for our annual Ladies Lunch held at the Horses Trust in Speen. Yet again we have kindly been given the opportunity to use these beautiful facilities and as usual expect tickets to go very quickly. There will be the usual temptations of both plants and jewellery for sale from 12:00 with lunch beginning at 1:00. This year we have a speaker from Helen & Douglas House Childrens Hospice in Oxford, which is one of the hospices we support, to tell us about the life affirming work they do. Tickets for a three course lunch with wine and coffee are £22.00 and are available from Speen Stores or by calling Christine Symondson on 01494 488654.

A further date for your diaries:

On Sunday 5th July we will be holding our Food & Craft Fair in the village marquee on Speen Playing Field from 11 - 4 o'clock. We are expecting an exciting mix of both old and new food and craft stalls together with refreshments. If you know of any local artists/craftsmen who may like to attend contact Christine Symondson on 01494 488654 to check availability.

We look forward to meeting many of you at our events this year and thank you all for your continued support of our group. All of the hospices we raise funds for continue to do amazing work in our local area.

CHILTERNHOUSE

Transparent Financial Advice

“A good plan is like a road map: it shows the final destination and usually the best way to get there.”

- What do I already have?
- Is what I have still the best for me?
- What do I need to safeguard my financial future?
- How much is enough?
- What is the best way for me to plan ahead?

At Chiltern House we blend traditional values with modern thinking. If any of these questions remain unanswered for you we'd be delighted to hear from you.

2 The Courtyard, Eastern Road, Bracknell, Berkshire RG12 2XB
T 01344 356980 F 01344 454635 E info@the-chp.co.uk

Chiltern House Partnership LLP is authorised and regulated by the Financial Services Authority



A HISTORY OF SPEEN



The "Leaves of Time" was first published in 2000 as part of Speen's Millennium Celebrations and is a history of the village and its inhabitants since records began. It records the building of Speen Chapel as well as the birth of our school, the origins of the 'bodger' and Speen's brush with the Second World War! It is a fascinating account of the self-reliance of the inhabitants of this remote hilltop village.

Updated in 2007, the current edition records more recent events in the village such as the school's 40th birthday, the opening of the children's bike park, the numerous Speen Group's fundraising events and of course the biennial SPEEN FESTIVAL with its art and photographic exhibitions, plays and musicals. All proceeds of the sale of the books go toward Speen Festival.

THE LEAVES OF TIME is available from Speen Stores and by email from symonds@speen10.freemove.co.uk

Speen WI

Our WI year got off to a good start when, for our December meeting, we were treated to the story of John Dunsterville's life as a rock musician. We all joined in with songs – for some from their youth and for others before they were born – and heard of his many exploits. For one member it brought back wonderful memories as she had attended his concerts and had an album ready to show us all.

Since then we have learned about the changes to Princes Risborough High Street, the lives of the Dashwoods and the truth and the legends about pearls.

This year we celebrate 55 years of the current evening WI in Speen, although there had been one formed in 1926 which disbanded in the late 1940s; and as usual we enjoyed a Birthday Supper with a light hearted look at what the WI is all about.

Members have taken advantage of events organised by the County Federation such as the 'Inventions and Discovery' Day. Eminent speakers helped explain the causes and treatments for cancer, what is meant by nano-technology and the development of the world wide web. They also attended the Centenary Celebration Lunch with singing and dancing afterwards. Many are looking forward to the County Garden Party at Waddesden in June and Margaret Hancox will represent Speen WI at a Buckingham Palace Garden Party in the same month.



WI member Vera Lennard (right) shows the blanket made from her knitted squares to Knit and Natter organiser Becky Treen

Vera Lennard has been knitting squares to make into blankets which Speen Church then send to Ethiopia. Each blanket needs one hundred squares which is quite appropriate in this Centenary Year, but we estimate that Vera has knitted closer to 1000, and she hasn't stopped yet. Other members are looking at '100' activities and we intend to plant bulbs in the village this autumn as a permanent reminder of this special year.

Jean Morris
488529
speenwi@gmail.com

Speen Village Hall

It has been another busy time for the Village Hall. Thanks to grants from the District Council, the Parish Council and the Fete Committee we were able to have the Village Hall roof repaired so hopefully no more flash floods!

Recent events have included the Christmas Bazaar which, thanks to the numbers of villagers who attended, raised a record amount.



Photos courtesy of Andy Thomson

On 6th March we held another very successful Film & Food Night screening "What we did on our holiday" - a very amusing film accompanied by a delicious home cooked meal including a crumble with the blackberries and apples foraged from our local woods and orchards.



We are planning a Cream Tea for Saturday 23rd May and another film night in the Autumn.

Thank you to every one who supports our events - the Hall is owned by the Village and without your attendance the Hall would not be able to carry on.

Bill Groves
Chairman
Speen Village Hall Management Committee



Bucks Best Mix of Music

mix96.co.uk

Speen School & PTA

Safari, Sunshine and Spring Term!

It's been a fun packed Spring term with many highlights including the dining delights of the Safari Supper and an all school trip to Whipsnade Zoo, definitely a safari theme this term! I'm sure you'll agree this year's Safari Supper was another roaring success. The food was delicious, the drinks flowing and it was great to catch up back at school with some yummy desserts and a bit of a boogie. It proved once again how important the school is to the village and how keen everyone is to support the school, for which we are really grateful. We're still adding up the final figures but it looks like we have raised just over £700; this will make a real difference to the school. A huge thank you to Helen Davies for her amazing event organising skills, the all important hosts, the volunteers who helped to ensure everything ran smoothly, and to everyone who came along. It really was a brilliant night.

Following the success of the Safari Supper, plans are under way for our biggest fundraiser of the year, Speen School and Pre-School's Summer Ball on Saturday 27th June 2015. With an Indian theme it promises to be an exotic explosion of colour and taste this year. We're delighted to announce that Hypnos Beds in Princes Risborough are on board as the main event sponsor, while The Hampden Arms will sponsor the Drinks Reception. We still need additional sponsors, auction and raffle prizes, plus lots of help to set up, so if you'd like to support in any way – big or small, please let us know. We are also delighted to announce the return of the band NBS who performed for us 2 years ago. We're very lucky to have the help of Eliot and the team at GlobalizeMe (owned by Andy Forkgen, Holly's dad) to create a PTA website where all PTA business will now be posted. The Ball updates will go up here so look out for them at www.speen.schoolpta.co.uk. Tickets will be on sale after the Easter Holidays with an early bird incentive.

World Book Day on 5th March saw the children come to school dressed as a favourite character from a book and deliver a talk about it. Everyone did brilliantly making it very hard to select winners but this year they were: Joey Childs Y2, Sophie Winson Y1, and Hugo Khaira YR, well done everyone!

On 10th March the whole school went to Whipsnade Zoo to supplement this term's topic. The sun shone all day and the children enjoyed some interactive sessions. Earlier in the term Tom Way, wildlife photographer, came in to school and showed some of his amazing photographs taken around the world of the biggest and fastest creatures, inspiring a new generation of wildlife photographers.

The children looked fabulous in their homemade funny hats and wigs for Comic Relief and had fun reading out their jokes.

Congratulations go to: Daniel Matthews Y2, Lucy Morris Y1 and Jacob Buttarazzi YR who were the winners of the joke competitions. A big

thank you to Katie Abdelmoulla for arranging the red nose sale and sweepstake. We raised a brilliant £173.21!



The Gardening, Film and Cooking clubs and the Friday draw continue to be big hits with the children; these are only possible because of the time given and talents of everyone who runs them so a big thank you. There's been an after school multi sports club and karate lessons in school time; parents were invited to watch the last session of the term and were treated to an impressive display of agility, power and self-control.

Thanks as always to everyone in the village who supports the school in so many different ways, from the lovely ladies who come in and hear the children read to the support of many of the local businesses who generously sponsor the annual Summer Ball. We look forward to seeing you all in the Summer term which promises to be full of more fun activities.

An additional news bulletin to report from the governors of Speen school who are delighted to inform you that OFSTED has just published its latest school results on its Data dashboard which you can access through their website: <http://dashboard.ofsted.gov.uk>. Once again Speen School sits proudly among the top 20%

nationally for key stage 1. We are enormously grateful to the hardworking teaching staff and leadership of our small school and hope you will agree that we may start small but we also stand tall.



*Becky Khaira
Chair
Speen School PTA*

LJM ELECTRICAL

48 Aspen Court, Freer Crescent, High Wycombe, HP13 7YG

Fully Qualified Electrician

Full or Partial Rewires
Sockets
Indoor/Outdoor Lighting
Fuse Board Replacement
Showers
Fault Finding
Inspection & Testing

FREE QUOTES & FULLY INSURED

ELECSA

Part P
Approved Contractor
www.elecsa.co.uk

Call Lewis Mills: 07793 725554
Email: lewis@ljmelectrical.co.uk

JOHN BISHOP Est. 1972 GARDEN MACHINERY

Sales & Service



HONDA
LAWN & GARDEN



Machine Hire

Scarifiers, Cultivators, Strimmers, Mowers
Hedge Trimmers

Blade/Chainsaw Sharpening & shear grinding.

We also stock a wide range of parts for various products.

Free Collection & Delivery



Tel No. **01494 563513**

Mob. **07917 106004**

1 Margaret Cottages, Northdean, High Wycombe, Bucks, HP14 4NH

KEVIN MILLS GARDEN SERVICES

01494 563491
07749 234982

Revitalise your garden
Drives, patios and paths cleaned
Lawns and hedges cut
Small landscaping
All fencing work undertaken
Regular maintenance



SPEEN STORES

Your "useful little shop"

- Fresh bread baked daily
- Sub-post office
- Fresh fruit and vegetables
- Free-range eggs
- Home-made cakes
- Handmade greeting cards

Please visit the village web-site
www.speenbucks.org.uk for our opening hours
and more information

District Council News – April 2015



The Council recently delivered issue 16 of the Wycombe District Times to all households, which provided a good overview of the many developments taking place across the District, so I will not repeat what was published there. Incidentally, electronic versions of Wycombe District Times are available on the WDC website if you would like to refer to current and previous issues. The link is <http://www.wycombe.gov.uk/news/wycombe-district-times.aspx>

Looking at one obvious development, by the time you read this, some of you may have been to the NEXT Home store which has opened at Cressex, and also seen the progress of the new Sports Centre and Waitrose store.

Perhaps the most significant event since the last issue of SNDN is the delivery of Council Tax bills, which nobody likes to receive. However, as I have previously indicated, WDC froze its portion of Council Tax for the fifth year in succession. It is worth mentioning that WDC has the lowest rate of Council Tax of all 4 Buckinghamshire Districts by some margin, although as you look at your CT bill, you will see that Bucks CC and the police increased their charges.

I would also like to point out that the majority of savings made within the District to balance the books without increasing Council Tax have been made by efficiency measures within the Council and not by reducing front-line services. For example, premises rationalisation has meant that one entire Council office block has been vacated and let to tenants, which reduces WDC costs and also generates a commercial rental income, providing a double benefit to taxpayers.

On a broader topic, this issue of SNDN will be published around election time, which this year covers both National and Local District elections. I suspect that most people will be fed up with politics and will be glad when the new administrations are in place.

You will be aware that I did not seek re-election as the ward councillor for Lacey Green, Speen and the Hampdens (the ward does not extend to North Dean). This was a difficult decision, taken primarily for health reasons. I would like to take this opportunity in writing my last news article for SNDN to say that it was a privilege to represent the area at Wycombe District Council, and to make a contribution to the overall running of the District as Cabinet Member for Finance.

As anyone who has served as a councillor at any level of local government will know, much of what you do is not seen by the vast majority of people, although I am hopeful that the programme I have campaigned for to upgrade the Hampden Row exchange for improved broadband will deliver in 2016.

Finally, I wish my successor, whoever that may be, good luck in representing the ward over the next 4 years.

Mel Foster

Making Road Signs Visible

You will, no doubt, have seen that road signs in the parish, some very important, have been allowed to become overgrown or dirty to the point where they are completely unreadable.

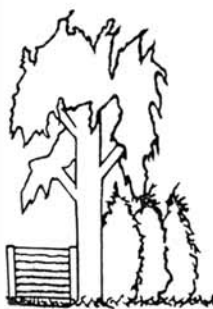
As the councils responsible are no longer monitoring these problems, it falls on residents to look out for themselves. Accordingly, if you know of such obscured signs, will you either try to clear or clean them yourselves, making sure it is safe to do so, or report them to Hughenden Parish Council (01494 715296) and the NAG will endeavour to get volunteers to carry out the work.

Hughenden Parish Council

C.G. Tree and Garden Services

WORK UNDERTAKEN:

- Tree Surgery and Felling
- Fencing
- Hedge Cutting/Topping and Turfing
- Woodchips and Firewood for Sale
- Free Estimates
- Qualified Staff
- Fully Insured
- Seasoned Firewood



Phone

Chris Gant
01494 562045

FRASER-MORGAN SCHOOL OF DANCING

Naphill Village Hall

BALLET (R.A.D.) : Age 3+

MODERN / JAZZ (I.S.T.D.) : Age 4+

FOR MORE INFORMATION, PLEASE CALL

ELAINE TUCKER ON :

01494 816539 or 07974 121081



M. R. COLLINS

GARDEN CONSTRUCTION

Est 1979

Driveway, Paving, Brickwork, Fencing
Groundworks, Excavations, Operated
digger hire.

We specialise in Block paving and all
types of slab laying Indian stone and
concrete offering a start to finish service
inclusive of excavations muck away,
supply and fix.

For estimate Phone: 01844 346360
Mobile: 07774 256732

WHY NOT TRY OUR DELICIOUS
**SAUSAGES, BACON, CHOPS,
LEG OF PORK, GAMMON
& SHOULDER OF PORK**
FROM OUR OWN HOME-GROWN PIGS

Flowers Bottom Lane
Speen • Bucks • HP27 0PZ
t: 01494 488078
e: thepantry@darvillshillfarm.co.uk



The Rural Community Defibrillator Group

We are happy to report that since our first mention we are now well on our way to fulfilling the challenge we set ourselves to provide public accessible defibrillators to local villages. Our first defibrillator was installed at Princes Risborough Golf Club on 20th February and our second will be going live at Lacey Green by the end of March.



A further three units are now on order, the first of which will be installed on the outside of the village shop in Speen* (see photo below) by the end of April. As soon as we can in April we will be organising a training and familiarisation session with the help of the Ambulance Service in the King William and will let villagers know the date via the village messenger, village diary and posters, so please look out for this. The aim of the

initial training is to make all of us aware of what a defibrillator can do and give confidence to potential users (all of us) to be able to use it in an emergency. We hope by doing this we will end up with a networked team of volunteers in each village willing to assist in emergency situations if needed and also to oversee the upkeep of each unit.



We have further funds being committed by forward thinking local district and parish councils and other groups committed to making a difference to people's lives. Speen Fete have kindly agreed to donate to the RCDG this year.

The Trustees are currently applying for charitable status having fulfilled all of the criteria, in the hopes of offsetting VAT and being able to Gift Aid future donations.

Your two local trustees are Paul Rogerson 488315 and Christine Symondson 488654 who are very much looking forward to seeing the unit in Speen. Do contact either of us if you feel you can help.

Without these facilities no change is possible. With them lives may be saved.

Ivy Rosie Whittle

28.03.1921 – 23.12.2014



North Dean loses its most senior resident – Ivy Rosie Whittle of Tarsia, Speen Road. Ivy, who had reached the grand age of 93, passed away peacefully in her sleep at home on 23 December 2014.

A moving service was held at Amersham crematorium on Thursday 8 January 2015, where Ivy's extended family of children, grandchildren and great grandchildren, together with friends and relatives, celebrated her life and shared happy memories.

At the age of four and a half, Ivy moved to North Dean from her birth place of Great Kingshill and, with the exception of a brief time living in a neighbouring village, Ivy lived in North Dean all her life and was an active community member until illness began to take hold in her later years.

She will be sadly missed by all those whose lives were touched by her love and kindness, and we, the villagers of North Dean say a fond farewell to our most senior resident.

*Julie White
Resident, Neighbour and Friend*

Who's Who in Speen and North Dean

Bucks County Council - Member for Lacey Green	Carl Etholen	01494 564771
Hughenden Parish Council - Chairman	Roger Beavil	01494 715296
Lacey Green Parish Council - Chairman	Cathryn Davies	01844 342800
Lacey Green Parish Council – Councillor for Speen Ward	Roger Craft	01494 488343
North Dean Village Hall – Bookings Secretary	Jez Wicks	01494 563517
North Dean Village Hall - Fete	Jez Wicks	01494 563517
North Dean Village Hall - Secretary	Robin Hughes	07920 748580
Piggotts 7 '48' Musical Evenings	Nick Wheeler-Robinson	01494 562167
Police Contact	Non emergency Emergency	101 999
Riding for the Disabled	Gloria Holmes	01494 488420
Speen & North Dean Good Neighbours	Pat Richardson	01494 488627
Speen & North Dean Guides	Pauline Hall	01494 488372
Speen & North Dean News - advertising	Tom Dent	01494 488943
Speen & North Dean News - Chair	Gloria Holmes	01494 488420
Speen & North Dean Toddler Group	Helen Davies	01494 488847
Speen Baptist Church	James Entwisle	01494 488875
Speen Festival - Secretary	Sarah Rogers	07771 534234
Speen Fete - Chair	Amanda Dobbs	01494 488887
Speen Helping Hospices - Secretary	Maureen Laing	01494 488397
Speen Marquee	Greg Cook	01494 488939
Speen Playing Fields Chairman	Tony Bobroff	01494 488688
Speen Pre-School - Chair	Alex Allan	01494 489838
Speen School - Head	Denise Nayna	01494 488321
Speen School PTA - Chair	Becky Khaira	07815 134330
Speen Stores	Alison Templeman	01494 488258
Speen Tennis Court - Secretary	Philippa Lane	01494 488453
Speen Village Hall - Bookings	Sue Taylor	01494 488500
Speen Village Hall - Chairman	Bill Groves	01494 488180
Speen WI - Secretary	Jean Morris	01494 488529
Wycombe District Council - Member for Lacey Green & Hampdens	Mel Foster	01494 488670

BEECHDEAN

Farmhouse Dairy Ice Cream

Made from fresh Jersey milk
and rich double cream

Pick up your ice cream and chill out this summer at the
newly refurbished Beechdean shop

Opening hours:

**Monday to Friday:
10:00am to 4:00pm**



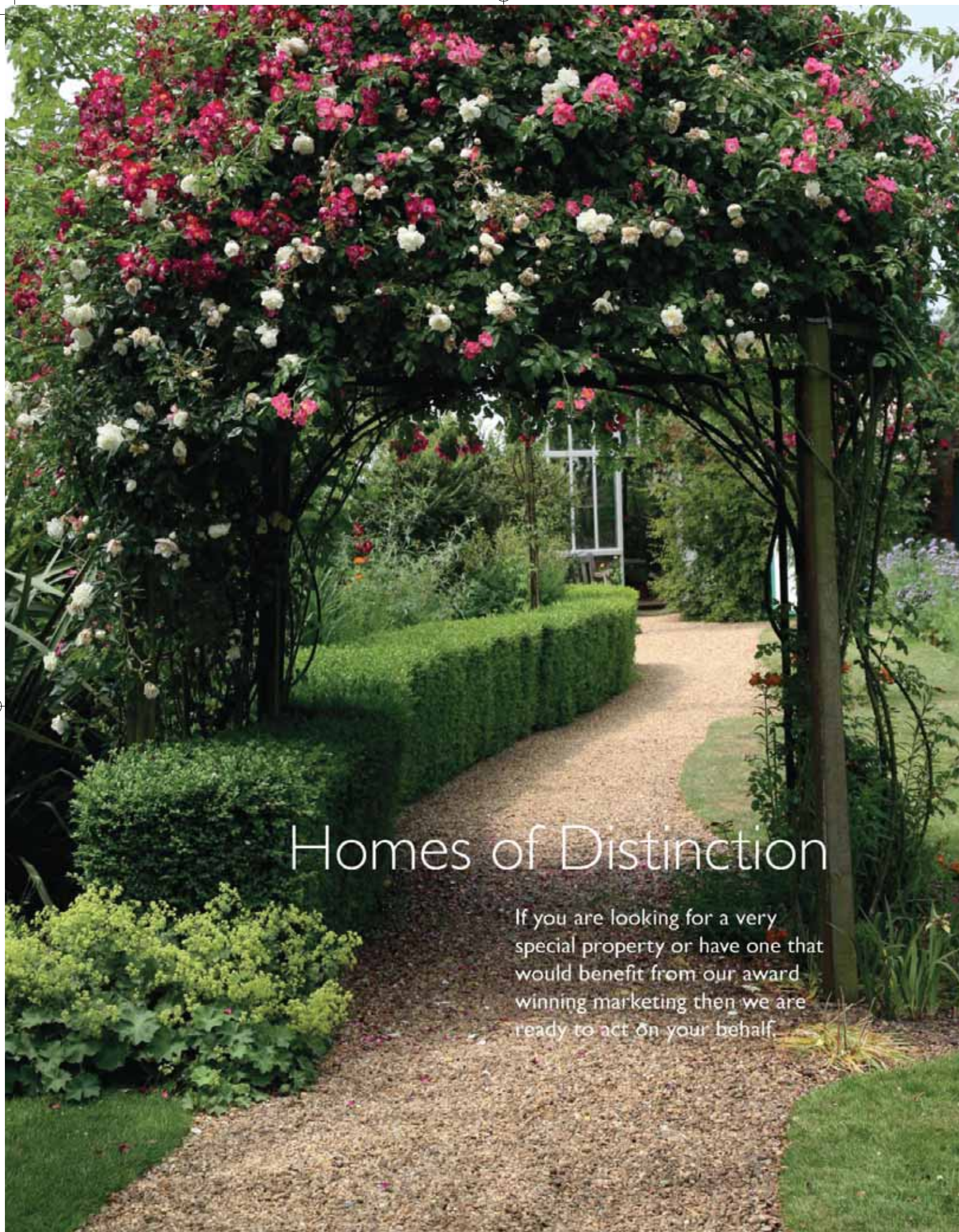
You can also find Beechdean in:



Waitrose



www.beechdean.co.uk



Homes of Distinction

If you are looking for a very special property or have one that would benefit from our award winning marketing then we are ready to act on your behalf.

01844 343131
Princes Risborough Office

01494 711677

FINE & COUNTRY