



Issue 54  
Spring/Summer 2012



## Speen and North Dean News



Editor: James Hazeldine

Advertising: Peter Cooper

Production: Jude Awdry

Committee:

Gloria Holmes - Chair  
Megan Chinn  
Tom Dent  
Nick Wheeler-Robinson  
Julie White



Printer: PK-Inprint Ltd  
Tel: 01494 452266



Come and celebrate the Diamond Jubilee in village style at  
• **A Royal Tea for Royalty** •

The  
**SPEEN JUBILEE  
STREET PARTY**

PLAYING FIELD 3PM - 5PM  
TUESDAY 5<sup>TH</sup> JUNE



Come dressed royally and ...

**Bring** family and friends

**Bring** delicious food to share with your table

**Bring** a teapot and cup for your tea

**Bring** a chair • **Bring** a neighbour

Prizes for the best decorated table  
and best Royal lookalike!

Come early for rounders before tea  
and join in the Big Queen sing-a-long after tea

• More information will come from your Street Rep •

Organised by Speen Playing Fields



## Contents

What's On .....	4
Down on the Farm .....	7
Speen's Diamond Jubilee .....	9
Speen Marquee .....	9
Wildlife Watch .....	11
Buckinghamshire Age UK .....	13
Scannappeal .....	13
North Dean Carol Concert .....	13
Speen School and PTA .....	15
Letters to the Editor .....	17
The Speen Group Diary Dates .....	17
The Horse Trust .....	18
Risborough Area Community Bus .....	21
Speen Festival .....	23
Speen Church .....	25
Speen Heritage Group .....	27
The Atlantic 4 .....	29
County Council News .....	30
District Council News & HS2 .....	30
Speen Playing Fields .....	32
Speen WI .....	32
Speen Pre-School .....	33
Who's Who .....	34

### Speen and North Dean News Extra Copies

Do you ever need an extra copy?  
Perhaps to give to a friend or relative.  
Further copies are available at a cost of  
£1. Please contact Gloria Holmes on  
488420.

### NEXT EDITION

Copy for the next edition (55) is due by  
Sunday 5 August 2012.

The planned publication date is during  
September. Please send photos separately  
from text, together with captions and a  
consent form (download from the SNDN  
website [www.speenbucks.org.uk](http://www.speenbucks.org.uk)).  
Send to [editor.sndn@speenbucks.org.uk](mailto:editor.sndn@speenbucks.org.uk).

## Index of Advertisers

Alan Tucker .....	8
Alchemille .....	31
Beechdean Farmhouse .....	35
C.G. Tree & Garden Services .....	28
Chiltern House Partnership .....	12
Clickettyclack .....	28
Coles & Blackwell .....	21
David Marchant .....	10
Deborah Lewis .....	8
Footcare .....	22
Foursquare Land Limited .....	6
Fraser Morgan School of Dancing .....	10
Hughenden Builders .....	10
Ian Gray .....	16
Jenny Greene .....	5
JML Training & Consultancy .....	6
JNP .....	36
John Bishop .....	16
Judith A Newenham .....	6
Kevin Mills .....	22
LJM Electrical .....	22
M.R. Collins .....	16
MWH Interiors Limited .....	14
Nelson Electrical Services .....	16
Nick Higgins .....	22
Nicki Thomas Web Design .....	26
Paul Newman Limited .....	24
Pickels Farm .....	26
PK-Inprint Ltd .....	26
Risborough Area Community Bus .....	10
Solinium .....	20
Speen Stores .....	14
Speen Tennis .....	12
Springline Cars .....	22
Sue Fryer .....	22
Taps UK .....	20
The Old Plow .....	20
T.J. Day .....	14
TopDogs .....	26
Village Environmental Services .....	8

Month	Event	Where	Contact
<b>May</b>			
Saturday 5 <sup>th</sup>	Marquee erecting	Home of Rest/Horses 9.00am	Greg Cook 488 939
Sunday 6 <sup>th</sup>	'Hounds for Heroes' fete	Home of Rest/Horses 11.00am to 5.00pm	Laura Hill 488464
Thursday 10 <sup>th</sup>	Speen v North Dean Golf	Mentmore GC	Charlie Pearson 488483
Thursday 10 <sup>th</sup>	Quiz Night	KW4, 8.00pm	Geoff Smith 488701
Saturday 12 <sup>th</sup>	Rob Halligan Concert	Speen Chapel, 7.30pm	Sandy Mitcheson 488875
Friday 18 <sup>th</sup>	SG Spring Lunch	Home of Rest for Horses	Diana Summers 488344
Friday 18 <sup>th</sup>	St John Reading	Speen Chapel, 6.45pm	Graham Peart 488327
Thursday 24 <sup>th</sup>	Quiz Night	KW4, 8.00pm	Geoff Smith 488701
<b>June</b>			
Monday 4 <sup>th</sup>	Jubilee Village Funday	North Dean Playing Field	Andrew Howard 563980
Tuesday 5 <sup>th</sup>	Jubilee 'Street' Party	Speen Playing Field, 3.00pm	John Holmes 488420
Tuesday 5 <sup>th</sup>	Diamond Jubilee Band	KW4, 7.30pm	Dilly Hill, 488329
Wednesday 6 <sup>th</sup>	MPS	The Wheel, Naphill, 8.30pm	Graham Peart 488327
Thursday 7 <sup>th</sup>	WI, Welsh Cattle Drovers	Speen Village Hall, 7.45pm	Barbara Collett 488348
Thursday 7 <sup>th</sup>	Quiz Night	KW4, 8.00pm	Geoff Smith 488701
Sunday 10 <sup>th</sup>	Speen v Hampden Jubilee Cricket Match	Great Hampden, 2.00pm	Trevor Daniels 489809
Friday 15 <sup>th</sup>	Funday 'Olympic' Footie	KW4	Andy Thompson 488524
Saturday 16 <sup>th</sup>	Speen Funday 'Olympic' Sports	Speen Playing Field	Andy Thompson 488524
Sunday 17 <sup>th</sup>	Marquee erecting	Speen School Field, 2.00pm	James Entwisle 488875
Wednesday 20 <sup>th</sup>	WI, Garden Club Visit	Coach at 10.00am	Daphne Westray 488742
Thursday 21 <sup>st</sup>	Quiz Night	KW4, 8.00pm	Geoff Smith 488701
Saturday 23 <sup>rd</sup>	PTA Ball	Speen School Field	Anthony Palmer 562765
<b>July</b>			
Thursday 5 <sup>th</sup>	WI, Duchess Georgina	Speen Village Hall, 7.45pm	Barbara Collett 488348
Monday 2 <sup>nd</sup>	MPS, Archery	Walter's Ash, 6.00pm, Black Lion after	Graham Peart 488327
Wednesday 11 <sup>th</sup>	Marquee erecting	Speen Playing Field, 5.00pm	
Saturday 14 <sup>th</sup>	Speen Fete	Speen Playing Field, 2.00pm	Amanda Dobbs 488887
Sunday 15 <sup>th</sup>	Speen Group, Craft Fair	Marquee/Speen Playing Field	Diana Summers 488344
Thursday 19 <sup>th</sup>	Marquee erecting	North Dean Playing Field, 5.00pm	Jem Symondson, 488654
Saturday 28 <sup>th</sup>	North Dean Fete	North Dean	Robin Hughes 07920 748580
<b>August</b>			
Wednesday 1 <sup>st</sup>	MPS	TBC, 8.30pm	Graham Peart 488327
Thursday 5 <sup>th</sup>	WI, Shackleton/ Antartica	Speen Village Hall, 7.45pm	Barbara Collett 488348
Thursday 23 <sup>rd</sup>	Marquee erecting	Speen Playing Field, 5.00pm	Jem Symondson 488654
<b>Later</b>			
September 21 <sup>st</sup>	Speen Group, Chilli Evening	Lacey Green Village Hall	
November 2 <sup>nd</sup>	North Dean Fireworks	North Dean Playing Field	Jez Wicks 07802 476712
November 3 <sup>rd</sup>	Speen Bonfire Night	Speen Playing Field, 6.00pm	Tony Bobroff 488688
November 9/10 <sup>th</sup>	Speen Group, Christmas Market	KW4	Diana Summers 488344

Welcome to the 54th edition of the Speen and North Dean News. Back last year a very pleasant dinner at the Old Plow saw me being "volunteered" to take on the role as Editor. Having now collected the various editorial contributions I have to admit I didn't realise just how much went on in the Village and the work that goes into all these committees and functions. You might say that perhaps I should have read the S&NDN a little more carefully!



My wife and I are relative newcomers to Speen having moved here from Prestwood some eight years ago. We realise just how lucky we are to live in such a beautiful area and to have such a vibrant village community. All thanks to the work of villagers on a multitude of committees. As ever there's always room for more volunteers. So if a particular area of activity tickles your fancy why not join in, they'll be pleased to welcome an extra pair of hands. The Speen Festival, in particular, will be looking for help. (See page 23.)

As a new boy to the News, I thought it would be an interesting project to get some feedback on the publication, hence the very short questionnaire. Even if you're not a regular reader please complete the form and hand it into the shop and while you're there buy something from Alison!

In the meantime, enjoy this issue and the forthcoming summer, although as I type this perhaps we've just had that.

*James Hazeldine*

## Welcome Packs

Speen's 'Good Neighbours' scheme was set up many years ago and is now run by Christine Oliver. One service is to provide new residents with a Welcome Pack of village information.

If you know of someone new to Speen please phone Christine on 488409 or email [christineoliver99@btinternet.com](mailto:christineoliver99@btinternet.com).

New residents to North Dean should phone Judith Broadley on 563178 or email [cooljude@btopenworld.com](mailto:cooljude@btopenworld.com)

# SPEEN PERSONAL TRAINING

**FRIENDLY, SUPPORTIVE & MOTIVATIONAL ONE TO ONE TRAINING IN A PRIVATE GYM.....ON YOUR DOORSTEP!**

**APPOINTMENTS AVAILABLE 7 DAYS A WEEK TO FIT IN WITH YOUR LIFESTYLE**



## Fitness assessments

**Start the year with a personal MOT**

**Gift Vouchers available**

## Wattbike

**A gentle non-impact form of exercise suitable for everyone**

**For the regular cyclist, improve your cycling technique**

**Phone Jenny Greene on 01494 488352, 07716 022421**



A bespoke management training and coaching company established in 1997, working in the private and public sector.

### Recognise and capitalise on your potential

Do you need to give yourself the space to broaden your thinking, further develop your skills, confidence and competence in today's demanding environment?

We offer a coaching service that is confidential, flexible, targeted to meet clear goals and expand your skills base. We provide objective executive coaching that will support your professional, business and personal development.

### In-house training

Maximise the level of talent, skills and performance in your organisation. We specialise in the design and delivery of practical, interactive and results focused in-house training. Let us help you develop your people.

Check out our website at [www.jml-training.com](http://www.jml-training.com)  
or call us on 01494 488787 for further information.

- Add space
- Add pleasure
- Add value

Fine design  
creates  
fine homes

from sketch design to planning consent  
from builder to building

Jeremy Symondson  
Foursquare Land Limited  
Westwood, Hampden Road  
Speen, Bucks HP27 0RU  
[jem@4squareland.co.uk](mailto:jem@4squareland.co.uk)  
tel: 01494 488526  
mob: 07789 201616



front elevation before



front elevation after

SQUARE



Judith A Newenham

Curtains

Blinds

Cushions

10 Honor Road  
Prestwood  
01494 868461  
07788 718242

## Down on the Farm

As I write, we are experiencing the driest, earliest spring we can remember in 50 years farming. Our cows are normally out in the fields by mid April, but this year in common with farmers all over the country we turned ours out in March. Normally early turn out means a saving on bedding and conserved food but as the grass has not regrown, we are back to square one! I pray that by the time you read this, we will have had several inches of rain.

The Hereford cows have started calving. We keep a small herd to provide docile bulls to mate with the Jersey cows which do not conceive with Artificial Insemination. The Herefords will also provide top class beef to sell in our farm shop which should be opening this summer. Cattle will breed naturally all the year round so we arrange to put the bull with the cows in June/July so that the calves are born in the spring.



*Hereford calf Emelda at one day old*

Apart from the usual problems associated with running a small business, such as EC regulations and the difficulty of finding reliable employees, there are two worrying factors which are the current subjects of much press coverage and great deliberation in the agricultural industry. Both are directly or indirectly linked with climate change.

The first is the appearance of the Schmallenberg virus, (SBV), so called after the German town where it was first identified, which causes birth deformities in lambs and calves (twisted joints, limbs and neck) but usually hardly affects the adult animals. The virus is closely related to viruses circulating in Africa, Asia and Australasia. It appeared in Europe in 2011 and it is thought that it spread to Britain last autumn, probably by infected midges blowing across the channel and biting the adult animals.

Blue tongue disease arrived from Europe on infected midges two years ago. Fortunately we can vaccinate against the blue tongue virus but SBV is so new to science that there is no vaccine. Both diseases have only appeared since our climate started to warm up. The incidence of SBV is largely in the Eastern counties suggesting that it has probably arrived from the continent. We certainly haven't found any amongst our new born calves.

The second problem is that of the current public attitude to the growing of GM crops. Of course it



is sensible to use newly discovered scientific inventions with caution but mankind has never been able to progress without taking some risks. Over millions of years genetic changes have occurred naturally allowing us to evolve from single celled organisms. As far as we know the changes have always taken place within an existing organism, but now scientists can put a gene from one kind of plant into another different kind of plant (transgenic modification) with resulting benefits, such as drought resistance for cotton plants and the addition of vitamin A into rice.

With the world population (much of it under-nourished) expected to increase until 2050 and the likelihood of our climate becoming much hotter, surely we must allow our scientists to use all available means to speed up the adaptation to environment process so that plants can withstand changed conditions? The majority of farmers in this country feel that it is vital to be allowed to take advantage of modern technology to produce food as efficiently as possible.

When artificial insemination (AI) for cattle was introduced just after World War II there was considerable resistance to it, as people thought it was 'unnatural'. There must be a large number of formerly childless couples that are very glad that the pioneer AI work was done! Today AI is accepted by all farmers in the developed world. It allows the propagation of the best blood lines (available to even the smallest farmers) and removes the necessity of owning an often very dangerous animal. In North Dean as previously mentioned we do use bulls, but AI is the rule for the vast majority of cows. (You may see a young Jersey bull in a barn with heifers but they are never let outside.)

Returning to the GM controversy. In the USA the first GM crops were tested over thirty years ago and since 1996 they have been grown on a commercial scale, until today it is reckoned that 167 million acres of GM crops are grown world wide. USA is still the largest grower followed by Argentina, Canada Brazil and China. As Sir John Beddington, the Government Chief Scientist said at a recent lecture in Reading: "If after 30 years of growing GM crops in the USA (the most litigious society in the world) no one has even brought a case, let alone won a case, against the manufacturers of GM products, then it is very unlikely that there can be any serious problems with them."

*Gill Kent*

**Inspiring**  
**SPACE**

deborah lewis garden design

## celebrating life outdoors

gardens for all ages and all interests that enable you to celebrate life outdoors

*peace beauty joy*

Professionally prepared garden design, construction and planting plans

Full construction and landscaping service in partnership with first-class contractors

Featured in:  
London Evening Standard, Your Garden magazine and Garden Inspirations magazine

**City & Guilds Qualified**

Horticulture Phase I: Distinction 1992

Phase II: Garden Design, Construction and Maintenance: Distinction 1994

t 01494 488362 m 07919 554551 e info@inspiringspace.co.uk  
www.inspiringspace.co.uk

## Antique Furniture Restoration

Formerley  
North Dean Furniture Restoration

Inlay &  
Marquetry

Upholstery

Furniture  
Made &  
Copied

French  
Polishing

Wood  
Turning

Joints  
Repaired



**Alan Tucker H.N.D.**

Telephone: 01844 346614

Mobile: 07870 852478

*Call Alan for a no obligation viewing and quote*

## VILLAGE ENVIRONMENTAL SERVICES

Proprietor: Dennis Cook

**BLOCKED DRAINS CLEARED**

**REASONABLE RATES**

**NO EXTRA CHARGE FOR EVENING,  
WEEKEND OR BANK HOLIDAY CALL-OUTS  
24 HOUR POLITE, COURTEOUS SERVICE**

**C.C.T.V. DRAIN SURVEYS**



Tel: 07850 635 844 between 9am-6pm  
01296 624 221 at all other times  
Fax: 01296 620 222

Full Public Liability Insurance



**DOMESTIC DRAIN SERVICE**

## Speen's Diamond Jubilee Event

To mark 60 years of The Queen's reign the country will be celebrating over an extended weekend on 2nd, 3rd, 4th and 5th June. Not being a community that likes missing out, Speen will be holding an afternoon and evening event on Tuesday 5th June. The fun will centre on a 'street party' to be held at the bottom end of the Playing Field.

A group drawn from village organisations has arranged an informal programme which, it is hoped, will encourage all villagers to join in:

- 3.00pm:** Rounders on the playing field
- 3.30pm:** Set up and decorate tables (Royal theme). Tables arranged by roads.
- 3.45pm:** Fancy Dress Parade and judging:  
Adults - a Royal Look-a-Like  
Children - Princes & Princesses
- 4.00pm:** Bring-and-Share Tea Party
- 5.15pm:** Best Decorated Table award. Presents of Commemorative Mugs to village children.
- 5.30 - 6.00pm:** Jubilee 'Big Queen Sing-Along', with song sheets. led by Kate Laughton and the Chapel group
- 7.30pm:** KW4 event

Street Reps will liaise with villagers on the table arrangements:

**Green** - Flowers Bottom Lane, Grubbins (Debbie Tilt, Amanda Dobbs)

**Red** - Chapel Hill, St Peter's Close (Carrie Cranley, Monica Dent, Clare Morris)

**Blue** - Hampden Road (Debbie O'Brien)

**White** - Abbotswood (Sandy Entwisle, Sarah Bowen)

**Yellow** - Studridge Lane, Cherry Tree Close (Lesley T-D, Julie Cooper)

**Purple** - Flowers Bottom, Highwood Bottom, Turnip End (Maureen Laing)

**Orange** - Coleheath Bottom, Spring Coppice Lane (Cathy Buxton, Marion Grimsdale)

For more information contact your Street Rep or Debbie Tilt (488733), Cat Cook (488939) or John Holmes (488420)

## Speen Marquee

Our village owned, 60ft x 40ft marquee was used in the summer of 2011 for Speen FunDay, the PTA Ball, Speen Fete, North Dean Fete and Speen Festival.

We have a similar programme of hirings in 2012 for village events and a few private hirings. This is the maximum number of hirings that we can resource with our volunteer force of very willing workers.

The hire charges are kept low for village events. The income is used to cover repairs, maintenance and insurance, with the surplus held in a fund to provide for the eventual replacement of the marquee.



We speeded and eased our erection procedures by prior marking out the stake positions and using our mechanical 'Wacker' to drive in the heavy steel stakes. The new trailer to store the marquee avoided loading/unloading every hiring.

Please put the 2012 erection dates shown below in your diary and lend a hand - it's quite enjoyable really! The relevant team leader (Jem Symondson, Ashley Cooper, James Entwisle and Greg Cook) will send out an email before each upping asking for helpers. Last year we were very pleased that several village teenagers helped. We hope they will again this year.

Location/Function	Upping
<b>Home of Rest for Horses</b> 'Hounds for Heroes'	Saturday 5th May (9.30am)
<b>School Field</b> School events, PTA Ball	Sunday 17th June (2.00pm)
<b>Speen Playing Field</b> Speen Fete, Craft Fair	Wednesday 11th July, (6.00pm)
<b>North Dean</b> Palmer party, ND Fete	Thursday 19th July (6.00pm)
<b>Speen Playing Field</b> Cleaver wedding, Slade party	Thursday 23rd August (6.00pm)

For information about the marquee contact John Holmes 01494 488420.

# Tree and Hedge Service

Trimming, felling, shaping & pruning  
Fencing & Landscaping

Qualified & Insured  
Free advice & Quotations

David Marchant

01494 488229

## Hughenden Builders

Established 22 years

### All Building Works Undertaken

- Extensions.
- Alterations.
- Loft Conversions.
- Roofing – all types.
- Drives, Block paving, Tarmac etc.
- Patios, Walls, Garden landscaping.
- Plumbing, Plastering, Carpentry.

### Planning Service. Clear & Concise Plans

Single Storey £150.00

Two Storey £300.00  
(plus council fees)

Free detailed estimate with drawing.  
Planning fees returned if tender accepted.

171 Main Road  
Naphill

Tel: 01494 562937  
01494 438057

## FRASER-MORGAN SCHOOL OF DANCING

### Naphill Village Hall

BALLET (R.A.D.) : Age 3+

MODERN / JAZZ (I.S.T.D.) : Age 4+

FOR MORE INFORMATION, PLEASE CALL

ELAINE TUCKER ON :

01494 816539 or 07974 121081



**Risborough Area  
Community Bus**

### For Groups

*Clubs, families and friends. For your own events,  
and for sports, shopping, theatres and parties.*

*For ALL AGES*

*Our Bus is available evenings and weekends.  
Unique DOOR TO DOOR service, up to 14  
passengers  
and wheelchair accessible.*

*Typical rates:*

*Aylesbury (with three hours at destination) - £55.00*

*High Wycombe (three hours) - £55.00*

*Oxford (three hours) - £75.00*

*Wembley (four hours) - £120.00*

*Silverstone Circuit (four hours) - £100.00*

*For information, prices and bookings  
call 07941 963097.*

## Wildlife Watch

By Peter Symonds

The past few months has seen some very mixed weather conditions affecting the village.

The colder winter conditions at the beginning of the year produced the usual crop of winter visitors. During February some 7 Crossbills, 28 Siskins, 55 Redpolls and 5 Bramblings were recorded by one birdwatcher on a visit to Monkton Wood. The winter conditions were however not as harsh as in recent years and numbers of birds in our garden never quite reached previous levels. At my own feeding station however I had 36 Redpolls in early March and a male Bullfinch on the feeders was a welcome new feature. Only one Brambling was recorded in the garden mixed in with 28 Chaffinches. Ravens have been reported in Speen with 3 recorded in Great Hampden in January. North Dean had a visiting flock of 260 Common Gulls in mid March. Various villagers had visits from a bold Heron that visited gardens right in the heart of the village.



Crossbill

During March the weather changed dramatically which prompted major changes in the local wildlife. Summer migrants like the Chiffchaff were recorded in College Plantation but my most remarkable sighting was some 4 Grass Snakes basking in the sunshine on logs around my garden pond. There were two large specimens and two very small ones and mating may have been taking place. These snakes are highly sensitive to human disturbance so I watched them through binoculars from the house. There has also been much activity with the local birds searching for nest sites. Four of our garden nest boxes are already in use by Blue Tits and Great Tits, with Robins and Blackbirds constructing nests on the house. Longtailed Tits and Goldcrests have also been seen building nests in the garden whilst our visiting Mallard have yet to decide whether to nest with us. There are also currently good numbers of Pheasants in the vicinity and our neighbours discovered two eggs laid on their back patio (with no sign of any nest) probably from an inexperienced bird. The local Kites have also been seen carrying nesting material.

A number of people have reported on the local Roe Deer and other people have reported declines in the number of frogs spawning. This is certainly the case in our own garden probably due to the impact of a local Heron and also the Grass Snakes. In our garden long lengths of toad spawn was laid even before some villagers had recorded any frogspawn (which normally appears about 4 weeks before the toad spawn).



Roe Deer

Please let me know of any interesting sightings.

Peter Symonds 01494 488016, or email: [symonds@speen10.freemove.co.uk](mailto:symonds@speen10.freemove.co.uk)

# CHILTERNHOUSE

Transparent Financial Advice

“A good plan is like a road map: it shows the final destination and usually the best way to get there.”

- What do I already have?
- Is what I have still the best for me?
- What do I need to safeguard my financial future?
- How much is enough?
- What is the best way for me to plan ahead?

At Chiltern House we blend traditional values with modern thinking. If any of these questions remain unanswered for you we'd be delighted to hear from you.

**2 The Courtyard, Eastern Road, Bracknell, Berkshire RG12 2XB**  
**T 01344 356980 F 01344 454635 E [info@the-chp.co.uk](mailto:info@the-chp.co.uk)**

Chiltern House Partnership LLP is authorised and regulated by the Financial Services Authority



## SPEEN TENNIS

**Would you like to play tennis in the village? The club is now affiliated to the LTA, so giving members the added benefit of the Wimbledon ticket draw.**

**Family, adult and junior memberships – contact [cherryseekins@btinternet.com](mailto:cherryseekins@btinternet.com) / 01494 488355**

## Spring into Action

As the days become longer and the daffodils flower, the sun shines brightly into our rooms and, oh dear, just look at that dust! Although Quentin Crisp the author is reputed to have said that dust gets no thicker after three years, most of us prefer not to test that theory.

We all have standards we like to maintain but sometimes we just can't physically manage the house and garden like we used to when we were younger. For anyone who wants a bit of extra help at home, you can ring Age UK Bucks and ask about the Help at Home service.

There are cleaners, shopping help, gardeners, handymen, and even hairdressers, computer tutors, therapeutic massage ladies, and the toe nail cutting team. All will visit at home, at a reasonable price, and at a day a time to suit.

Age UK Bucks will also help with welfare benefits advice, befriending visits, any information & advice needed by an older person, and rural day care.

Ring 01296 431911 Monday to Friday 9 - 4pm  
Age UK Bucks, 145 Meadowcroft, Aylesbury,  
Bucks HP19 9HH  
Registered charity no. 1139423

## Scannappeal

This year marks Scannappeal's 25th anniversary and, currently, every 10 minutes a patient is diagnosed or treated with equipment supplied in the past to Amersham, Wycombe and Stoke Mandeville hospitals.

If you, a relative or a friend has had cancer or heart disease, the chances are that they have benefited from Scannappeal's work.

You can help mark Scannappeal's special year in 2012 and help ensure the charity can continue to provide the most advanced equipment possible for local patients.

If you are celebrating a special birthday or anniversary this year, why not share it with Scannappeal and ask for donations in lieu of presents and help the Appeal or hospital of your choice?

Take part in **HOST25** – simply ask 25 people round for coffee, tea, drinks or even a meal, either altogether on one occasion or spread over several dates. Make a small charge appropriate to your event.

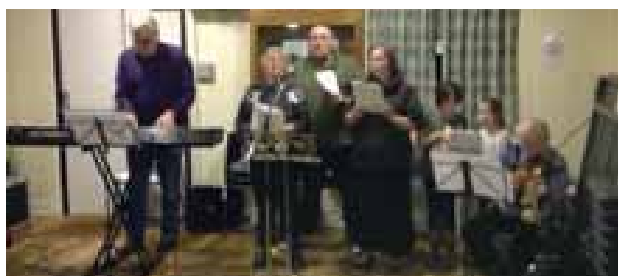
**Challenge25** – get sponsored to undertake a 25 themed challenge.

These are just some ideas – visit the website at [www.scannappeal.org.uk](http://www.scannappeal.org.uk) to find out more or contact Scannappeal on 01494 734161 or email [info.scannappeal@buckshealthcare.nhs.uk](mailto:info.scannappeal@buckshealthcare.nhs.uk).

## North Dean Carol Concert

The festive season got off to a 'tuneful' start with North Dean residents getting together for a sing-song on Monday 19th December at the village hall.

Having lubricated their vocal cords with a glass or two of mulled wine, the singing commenced, led by members of Speen Baptist Church - Megan Chinn, Nicki & Andrew Pitt, and accompanied by musicians Richard Hern (keyboard) and Peter



Salmon (violin). Soloist Alison Wilson delighted villagers with her angelic verse of Once in Royal David City.

A thoroughly enjoyable evening of music and song, bringing villagers together once again for some traditional pre-Christmas cheer!

*Julie White  
Acting Secretary, North Dean Village Hall  
Photography: Tony White*



## SPEEN STORES

Your 'useful little shop'

- Fresh bread baked daily
- Delicatessen counter
- Fresh fruit and vegetables
- Free range eggs
- Home made cakes
- Handmade greetings cards

Please visit the village website

[www.speenbucks.org.uk](http://www.speenbucks.org.uk) for our opening

hours and more information

## T.J.DAY

**Interior & Exterior  
Decorating Services**

*EST. 1984*

*28th Year of Serving the  
North Dean & Speen Community*

**City & Guilds Qualified**

**Tel: 01494 521593**

**Email:**

**[tim@day300.freeseve.co.uk](mailto:tim@day300.freeseve.co.uk)**

**mwh**

**design · refurbishment · construction**



- Interior building work and alterations
- Bathroom design and installation
- Kitchen design and installation
- Full property renovations
- All work covered by comprehensive insurance and full guarantee

**t: 01494 488002**

**m: 07866 738829**

**mwh | interiors**

[www.mwhinteriors.co.uk](http://www.mwhinteriors.co.uk)    [info@mwhinteriors.co.uk](mailto:info@mwhinteriors.co.uk)

Hayton Cottage, Flowers Bottom Lane, Speen, Princes Risborough, HP27 0PZ

## Speen School and its PTA

We're two thirds through the school year and with the recent weather suggesting that we're already into summer, the children are certainly taking advantage of it.

Our new outdoor seating area, Hideaway, has been delivered and is being well used and we look forward to an official opening in April/May. The PTA have provided the funds to purchase weather proof covers for the outdoor tables, allowing more lunch breaks in the fresh air.

The school did their part in supporting Sport Relief with all the children attired in various interpretations of red, engaging in a number of activities including 'going the extra mile'. It was a great sight seeing them all eagerly running laps of the school grounds for such a worthy cause. Again, the weather did its bit too. Thanks must go to Amanda Dobbs and Helen Davies for organising the event and we await the final fund raising total.



The older children had a chance to train for the mile as they participated in the Cross Country Festival on Speen Playing Fields. Joined by children from other local schools, the ongoing theme of warmer weather led to fast times and a good level of support.

Other events where the children have enthusiastically participated in include pancake racing on Shrove Tuesday, World Book Day and National Sing-up Day. Kate Laughton brought all her enthusiasm to the fore in leading the musical ensemble with children, staff and parents alike all showing off their hidden talents.

It is worth noting that whilst the PTA does an important and admirable job in supporting the school, many parents individually give their time towards extra curriculum activities; the Gardening, Cookery and Film clubs are all run by parents.

The big PTA event in March was the much heralded Safari Supper. This was a great success

as parents and villagers alike trooped from one house to another experiencing the various culinary delights and bonhomie, before finishing the evening off with desserts and further drinks back at the school. This again was well supported and we very much appreciate the ongoing support from our local community.



In March a very important event took place with the official opening and Service of Dedication for the new Foundation Stage area by Anne Davey, Diocese of Oxford Director of Education. It was a poignant moment to stop and give thanks and appreciation for this wonderful facility.

Once more the children have had the opportunity to gain knowledge away from the classroom. There has been a trip to the Chiltern Open Air Museum and Year Two took the opportunity to perform in Energize at the Swan Theatre in High Wycombe.

The end of the Spring Term was celebrated with a service at St John's Church, Lacey Green.

Looking forward to the summer, the annual School Ball will again be the social highlight of the summer. This year it will appropriately be an Olympic Going for Gold theme, and there are rumours that past Olympians from ancient Greece will be in attendance, so make sure that you keep 23rd June free.

Some dates for your diaries:

5th June - Diamond Jubilee Street Party  
23rd June - Speen School Ball  
14th July - Speen Fete

It is very comforting to know that our school continues to thrive. The support that we receive comes from every area of our community, whether currently involved in the school or not. We thank you all.

*Zoe Cartell  
Speen School PTA*

# M. R. COLLINS

## GARDEN CONSTRUCTION

Est 1979

Driveway, Paving, Brickwork, Fencing  
Groundworks, Excavations, Operated  
digger hire.

We specialise in Block paving and all  
types of slab laying Indian stone and  
concrete offering a start to finish service  
inclusive of excavations muck away,  
supply and fix.

For estimate Phone: 01844 346360  
Mobile: 07774 256732

## Nelson

### Electrical Services

- Extra lights and sockets fitted
- Total or part rewires
- New circuits
- Repairs and upgrades
- Consumer units fitted
- Inspection and testing

*No job too small*

*Reliable service*

*Fully qualified*

*Call Michael for a free estimate*

07908 644058 or 01494 565370

Email: [nelsonelectricalservices@live.co.uk](mailto:nelsonelectricalservices@live.co.uk)

Bobbins, Friars Gardens, Hughenden Valley, HP14 4LT

## Antique Restoration & French Polishing

Complete range of quality  
restoration work undertaken



### Ian Gray

Cottage 23, Great Hampden,  
Great Missenden, Bucks HP16 9RG  
Work Phone/Fax: 01494 488560  
Home: 01494 488023  
[www.iangrayrestoration.co.uk](http://www.iangrayrestoration.co.uk)



## JOHN BISHOP Est. 1972 GARDEN MACHINERY

### Sales & Service



**HONDA**  
LAWN & GARDEN



### Machine Hire

Scarifiers, Cultivators, Strimmers, Mowers  
Hedge Trimmers

Blade/Chainsaw Sharpening & shear grinding.

We also stock a wide range of parts for various products.

### Free Collection & Delivery



Tel No. **01494 563513**

Mob. **07917 106004**

1 Margaret Cottages, Northdean, High Wycombe, Bucks, HP14 4NH

## Letters to the Editor

Sir,

On Friday 2nd March the vans rolled out of Speen containing the goods and chattels of the female division of the Newenham family. It was a very sad day for the three of us as Speen has been our home for the previous 9 and half years. We've had such tremendous fun through the years, being very happy to join in with the fabulous events held by the many organisations in the village. During that time we have made some wonderful friends throughout the village and the regard held for us in Speen was clearly shown when Imogen suffered her accident in the festival play last September. The love and concern shown to her was overwhelming. In fact the support and good wishes we have received from everyone aware of our situation has been enough to keep us, particularly me, strong enough to carry on.

At the time of writing we're into our fourth week in Prestwood and have the majority of our boxes unpacked. Now it's approaching the time to get out the paint brushes and make it our home and, as it gets warmer, there's a mat of weeds to be dug out!

We'd love to see anyone who'd like to call by and those who wear painting smocks or bear cuttings from their gardens will be richly rewarded with tea and homemade cake!

You'll find us at: 10 Honor Road, Prestwood, HP16 0NJ and on 01494 868461.

Best wishes,

*Judith Newenham*

Dear Editor,

The residents of Speen and North Dean are so fortunate to have their own tennis court available to all members for a small annual fee. I have been fortunate in making new friends from the tennis club since I retired and we now play regularly taking advantage of the wonderful weather we have been experiencing of late.

One morning we were enjoying a fantastic ladies doubles but this was soon spoilt by two thoughtless householders lighting bonfires. The smoke was so bad that it engulfed the tennis court and we had to stop until the wind changed direction. Goodness knows what it must have been like for the immediate neighbours. I realise that it is not illegal to light bonfires during the day but surely it is in everybody's interests to do

this garden work at dusk when, at this time of year, it is too cold to keep windows open. We too, despite composting everything possible, have to have bonfires to dispose of some garden waste and hedge cuttings which are too much to take to the dump but we always try to do this in the evening.

Thank you Speen for having a great facility and I hope anyone who would like to get back into tennis or youngsters wanting to take it up for the first time will contact our Membership Secretary, Cherry Seekins, whose contact details will be listed.

*Marion Bennet  
North Dean*



**DIARY DATES**  
2012

---

18th MAY  
*Ladies' Spring Lunch*  
at The Home of Rest for Horses  
Tickets available from Speen Stores  
or Diana on 01494 488344

---

15th JULY  
*Arts & Craft Fair*

---

21st SEPTEMBER  
*Hot Music, Cool Chilli  
& Dancing*

---

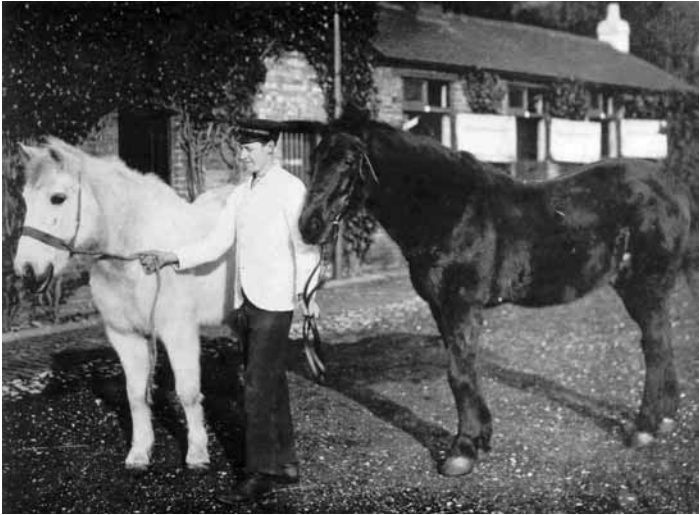
9th & 10th NOVEMBER  
*Christmas Market*

---

Contact  
**01494 488344**  
for more information

**We support:**  
 Florence Nightingale House • Helen & Douglas House  
 Iain Rennie Hospice at Home • Sue Ryder Care Nettlebed  
 The South Bucks Day Hospice

The Horse Trust, founded in 1886, is the oldest horse charity in the UK and is celebrating its 125th anniversary. Its founder Miss Ann Lindo, was inspired by the famous autobiographical memoir of Black Beauty in which he describes his life of hardship, cruelty, acts of human kindness and his eventual happy retirement in the country.



*Cricklewood horses*

Miss Lindo's vision was to give the hackneyed London cab horses a place of retreat to rest and recuperate enabling them to return to work some months later refreshed and nourished. Her work not only gave sanctuary to overworked horses but also supported the working poor of the 19th century with the provision of a fresh horse to continue with their labours.



Today, The Horse Trust provides education and training, funds clinical research and at its Home of Rest for Horses, it offers retirement and respite for working horses - horses that would be the tax payers responsibility - such as those used by the army and police as well as giving sanctuary to local horses that have suffered cruelty and neglect.

#### Rescued Horses

Based in Speen, less than 10 miles from Chesham and just outside High Wycombe The Horse Trust gave sanctuary to 14 of the sickest, horses, ponies and donkeys from Spindles Farm. Found barely alive, crammed in foul, stinking stables, tethered so closely together they could hardly move and standing on the carcasses of those that had succumbed to starvation: the conditions were truly appalling. With the outpouring of support from the public and the dedication and commitment of the staff at the sanctuary these horses now have a secure, healthy and happy future.

#### Working Horses

It is the "public's purse" which funds our police forces and armed services and this includes the mounted sections. Once these horses are retired from active service, whether it to be through injury, long term health problems or age it would be inappropriate for

**The Horse T**  
**125 YEARS 188**

**Advancing Exce**  
**in Equine Care**





the tax payer to continue to pay for their care when they are no longer in work.

That is what makes The Trust unique - there is nowhere else for these animals that have put their lives on the front line to keep the public

safe and fight crime across the UK to go. The riots last year were a demonstration of these amazing animals' bravery; charging into a threatening crowd, a wall of fire and potential harm for the safety of the public. They commit their whole lives, without complaint, to mankind and if The Horse Trust can give them the chance to deservedly retire, with dignity, for the rest of their lives in the peace of tranquillity of its sanctuary and in the care of its staff this goes some way to say thank you to these wonderful horses.

### "Horses, Heroes and Hounds - A Family Fun Day"

Sunday 6th May at The Horse Trust in Speen from 11am - 5pm

The Horse Trust is delighted to open its doors to the local community for a countryside themed, family fun day. The event is a joint fundraiser with Hounds for Heroes, who provide specially trained assistance dogs for disabled military and emergency service men and women. The event will have a strong military focus with a Spitfire flyover and support from RAF, Army, Navy and the Marines. There will be a licensed bar, food, activities for the whole family, shopping



opportunities and of course horses and dogs! It is a huge community event, the first that has ever been held at our magnificent horse sanctuary, and we would be delighted to welcome you and your family (well behaved dogs on leads included).

The Horse Trust is open to the public: Winter Opening 2 - 4pm Friday, Saturday and Sunday Summer Opening 2 - 4pm Thursday, Friday, Saturday, Sunday and Monday.

For more information please call: 01494 488464 or visit [www.horsetrust.org.uk](http://www.horsetrust.org.uk)

The Horse Trust is solely funded by the generosity of the general public by way of donations and receives no government funding.



**solinium**  
THE SOLAR LOGISTICS COMPANY



Now that you get paid for being green  
installing Solar makes perfect sense!

Call us  
**NOW** for  
your **FREE**  
survey

Solinium Ltd is a renewable energy company serving  
Buckinghamshire with high quality solar PV systems  
designed to your exact requirements.



Solinium Ltd  
7 The Valley Centre  
Gordon Road  
High Wycombe  
HP13 6EQ

**Call us on 01494 455571**  
or visit [www.perfectsensesolar.co.uk](http://www.perfectsensesolar.co.uk)



**FOR ALL YOUR  
PLUMBING & HEATING  
REQUIREMENTS**

PLEASE CONTACT  
**Ian Appleby**

Telephone : 01296 290 700

Mobile : 07964 041 655

Email : [tapsuk@sky.com](mailto:tapsuk@sky.com)

**NO CALL OUT CHARGE PLUS A FREE NO OBLIGATION QUOTE**

**PROVIDING A WATER-TIGHT SERVICE**

# The Old Plow

BISTRO AND RESTAURANT  
*Michelin listed*

## • DIARY DATES •

MAY - Spring/Summer Platter Menu

available in the Bistro

Tuesday-Friday for dinner  
& Tuesday-Saturday for lunch

JULY 14th - Bastille Day  
Special 3 course menu available

**BISTRO • RESTAURANT**  
**• LIGHT MEALS •**

**PRIVATE FUNCTIONS & PARTIES**

Open Tuesday to Saturday for lunch & dinner and  
for Sunday lunch on special occasions & private parties.

**01494 488300**

[www.yeoldplow.co.uk](http://www.yeoldplow.co.uk)

Chef patron and restaurateur since 1988  
Malcolm and Olivia Cowan

# Risborough Area Community Bus Use it or lose it!

Risborough Area Community Bus has been running to Speen since July 2011. With a service to Princes Risborough leaving Speen at 09.00 am returning at 11.30 am on Tuesdays, Thursdays and Saturdays, the volunteer bus management expected a reasonable demand, but there have been only 492 passengers to date. The future of the Speen service is therefore under review.

Established in July 2010, the bus is now carrying passengers at a rate of almost 500 per week on its daily services within Princes Risborough, Monks Risborough and Longwick, and the thrice-weekly services which cover Bledlow and Bledlow Ridge as well as Speen. The bus operations are funded by Wycombe District Council, and the Seeda and the Leader organisations, and the bus has recently received a further grant from North West Chilterns Forum. The value of the bus's services has been widely recognised, and the bus was a winner of an Action For Market Towns Award in 2011.

The full time-table is available at Speen Stores or via email to [racb@talktalk.net](mailto:racb@talktalk.net).

In addition to its regular services, RACB organises outings, with visits to Waddesdon Manor, World's

End Garden Centre, Bicester Village and Garden Centre and Waterperry Gardens scheduled for the coming months. The bus (up to 14 passengers and wheelchair accessible) is also available to Groups - clubs, families and friends - in the evenings and at weekends.

## Spring Outings

### Hounds for Heroes Fun Day at Speen

Sunday 6 May - 11.30 am and 2.00 pm

Returns at 2.30 pm and 4.30 pm

£2.00 each way; children (5 to 16) - £1.00; under 5s - free. Normal admission terms apply

### World's End Garden Centre

Saturday 12 May - 1.30 to 4.00 pm

£3.00; children (5 to 16) - £1.50; under 5s - free

### Art in Action at Waterperry Gardens

Wednesday 27 May - 1.30 to 4.00 pm: £8.00

Normal admission terms apply

### Bicester Village and Garden Centre

Sunday 10 June - 12.00 to 4.30 pm: £10.00

### Hearing Dogs Summer Celebration

Sunday 17 June - 1.30 to 4.30 pm

£3.00; children (5 to 16) - £1.50; under 5s - free

Normal admission terms apply

### PICK-UPS BY ARRANGEMENT

Information and bookings - please call 07941 963097

## Coles & Blackwell

### Car Service & Repairs

Book online at:

[www.colesandblackwell.co.uk](http://www.colesandblackwell.co.uk)

## Quality car servicing and repairs much closer than you think!

Where are we ? You will find us 300 metres down the small lane opposite the top of Bradenham Wood Lane in Walters Ash, High Wycombe HP14 4UX

*Established in 1959*



### Servicing

Did you know you can get your car serviced by us without invalidating your manufacturers warranty? Legislation passed a few years ago means that you can now choose any garage of your choice to service your vehicle.

### Courtesy cars

We have a fleet of new loan cars at your disposal whilst we service your own car or repair bodywork damage. Best of all - they are FREE OF CHARGE!

All part of the service you come to expect from Coles & Blackwell

air conditioning

mot testing

vehicle servicing and repairs

crash repairs

tyres, clutches & brakes

computerised diagnostics

batteries & exhausts

Open Monday to Friday 9:00am to 5:30pm  
Saturday 8:30 am - 12:30pm

**01494 563102**



## SPRINGLINE CARS

PRIVATE HIRE

- Airport Transfers
- Events & Occasions
- London Trips
- Personal Service
- Owner Driver
- Local Knowledge

RISBOROUGH

# 01844 27 44 74

Know the voice, know your driver



## KEVIN MILLS GARDEN SERVICES

**01494 563491**  
**07749 234982**

**Revitalise your garden**  
**Drives, patios and paths cleaned**  
**Lawns and hedges cut**  
**Small landscaping**  
**All fencing work undertaken**  
**Regular maintenance**

## FOOTCARE



**Margaret Cooper**  
MCFHP. MAFHP. SRN trained

Foot Health Professional

**Tel: 01844 344580**

Home Visiting Service  
Hard skin. Thick nails. Painful corns?

**Nick Higgins**  
**Forestry & Fencing**  
**Contractor**  
✆ **07768 383418**  
☎ **01494 488835**



45 Great Hampden  
Bucks  
HP16 9RJ

Seasoned logs  
available

## LJM ELECTRICAL

48 Aspen Court, Freer Crescent, High Wycombe, HP13 7YG

**Fully Qualified Electrician**

Full or Partial Rewires  
Sockets  
Indoor/Outdoor Lighting  
Fuse Board Replacement  
Showers  
Fault Finding  
Inspection & Testing

**FREE QUOTES & FULLY INSURED**

**ELECSA**

Part P  
Approved Contractor  
[www.elecsa.co.uk](http://www.elecsa.co.uk)

**Call Lewis Mills: 07793 725554**  
**Email: [lewis@ljmelectrical.co.uk](mailto:lewis@ljmelectrical.co.uk)**

## Revitalise



Relaxation for the  
Body and Mind

- Swedish relaxation massage for tired and stressed bodies
- Sports and deep tissue massage
- Remedial massage

treatments to suit your individual needs  
available locally in Naphill

**Sue Fryer ITEC and APNT Diploma (Dist)**

For an appointment please contact me on:

**07947 118664 or [revitalise.me@btinternet.com](mailto:revitalise.me@btinternet.com)**

# Fresh Ideas for Speen Festival

The future's bright for Speen Festival 2013. This was the promising message of a village Open Meeting in March, held to invite ideas about the future of the Festival and encourage new volunteers to get involved and take a lead. 'New blood' was a key talking point, as the 2011 committee is stepping back (though definitely not disappearing into the woods), so there is great scope for fresh thinking.

The verdict on Festival 2011 (see SNDN Issue 53, Autumn/Winter 2011) was that Speen and its neighbours had once again pulled off a dazzling feat of community collaboration with a string of successful events, both innovative and traditional. Due to generous sponsorship and high levels of ticket sales, the Festival generated a healthy profit, providing a secure and necessary financial platform for 2013.

At the heart of Speen Festival is the goal of encouraging children and young people to develop their creative talents. This goal has been pursued through SpeenSchoolFest!, an exciting art/music/dance programme run in partnership with local schools, and also through creative workshops and youth-led entertainment under the banner of Youth Takeover. Finishing the last Festival in sound credit means that the Festival can continue to invest in nurturing artistic interest and talent across all ages, but particularly among younger members of our community. Plans are already in hand for two days of fun learning activities to take place in local schools on 18th and 20th June, ending with a performance by pupils which all members of the community are welcome to attend.

In addition to that positive financial report, the Open Meeting confirmed strong backing for a festival in 2013 and yielded a good crop of interesting ideas about the kind of programme people would like to see - e.g. longer or shorter,

more or less intensive, spring or late summer - as well as suggestions on how best to run it, publicise it, engage audiences within and beyond Speen and recruit volunteers. There was support for repeating a 'core' of traditional highlights, suitably refreshed, like the community theatre and the Science Matters debate, and also for bringing forward new ideas to attract and widen audiences.

While retaining the established Speen Festival brand and its core aims, the character of the next Festival will be for the new leadership to determine. The next team to steer the Festival can be sure of continued help and advice from outgoing committee members, as well as comprehensive written handover information.

With six Speen Festivals to look back on, practices and procedures are tried and tested so the wheel does not need re-inventing - though there's ample room to insert new spokes! Several of the Festival 2011 event organisers and other key helpers have signalled a willingness to play their part in 2013, so important threads are

already emerging. What is now needed is for two or three enthusiasts to step forward to create a Festival leadership team - and begin the exciting task of imagining and building Speen Festival 2013.

If you'd like to be part of the team to create our next Festival, or if you would like to nominate someone to do this, please email [director@speenfestival.org](mailto:director@speenfestival.org) as soon as possible. A full report on the Open Meeting is available on request from [secretary@speenfestival.org](mailto:secretary@speenfestival.org)

For further information about SpeenSchoolFest! or to help with workshops in schools on 18th and 20th June 2012, please email [director@speenfestival.org](mailto:director@speenfestival.org)

*Sue Taylor*  
**Speen Festival (outgoing) Secretary**  
[www.speenfestival.org](http://www.speenfestival.org)



*Illustration created by artist Stu Mclellan and teenagers from Speen, at Speen Fete 2011*

# Reliable, Friendly Service

Taps, Leaks, Drains, Loos,

## Any Local Plumbing

Historically Interesting to Renewables

## Central Heating & Controls

Gas, LPG, Oil and/or Wood-Pellet

Registered for Gas, Oil, Part P Electric

## Based in Upper North Dean

# Paul's Plumbing

07786 175123



Registered  
Business

Local to Naphill, Walters Ash  
Lacey Green, Speen, Hampden  
Hughenden, North Dean



199757

Electrics - Bathroom, Heating, Etc.  
Registered for Self Certification

Paul Newman Ltd. 01494 565573



We have been blessed by a most glorious start to the spring and as we celebrate Easter as a time of rebirth and spiritual renewal, we can see God's hands at work all around us. The church has recently announced its new vision to help guide our work in the community and this calls for us to be "Together in Jesus, Empowered by the spirit of God and Effective to fulfil His purpose." This, together with our mission and values will help us understand the type of pastor we need to lead us forward, a search that will now start in earnest.

An integral part of our vision is to make Speen church a seven day church and provide a proper welcome to all members of the community. To this end, many of you will have seen the work that has been done to improve the interior of the Chapel itself which is now lighter, more modern and adaptable to stage such events as the Rock Star Adventure over Christmas. We are now submitting plans for the modernisation of the balance of the building, starting with new kitchen and toilet facilities that will enable us to provide better and more varied hospitality at the Church. This is an exciting project and we shall keep everyone informed of our progress. We shall also look to modernise the Manse in anticipation of the new pastor's arrival later in the year.

For those of you who have not had the chance to see the renovated Chapel building, we have two exciting events in May for your diaries. The first is a concert by singer songwriter Rob Halligan at 7.00pm on Saturday 12th May. Some of you may have listened to Rob's remarkable story when he came to speak and sing at a Men's breakfast at the pub, while Rob has also performed several lounge gigs in various homes in Speen. You can find out more about the event on our website: [www.speenchurch.org/Rob-Halligan-LIVE](http://www.speenchurch.org/Rob-Halligan-LIVE). This promises to be a great evening with drinks and canapés being served after the concert. The second is a complete reading of John's Gospel on Friday 17th May at 7.00pm. The Gospel will be read by several actors during which a meal will be served. The many voices bring this wonderful text to life with the relevance of John's words to our daily lives remaining undiminished.

The Church's involvement in the wider community is central to our mission and there are many examples of how we are taking the



Good News beyond the boundaries of Speen and North Dean. Over the winter, the Church once again supported the

night shelter project which offers a hot meal and a safe bed for the night for the homeless on Fridays and Saturdays. We have also started supporting the "One Can Trust" initiative and the villagers have been fantastic in showing their support for this innovative charity. Anyone wanting to find out more should call Kate Vale on 01494 488622. Farther afield, in February, seven intrepid members of the Church together with Paul Cornelius from the charity Food for the Hungry visited Moira McLure in Addis Abba. Moira, a resident of North Dean and member of Speen Church, has now been in Ethiopia for over four years and has found a true calling from God to work among the people of the South Gondar area where poverty and HIV/Aids has devastated so many lives. Moira's visitors were able to see her fantastic work at first hand, visiting the orphan and vulnerable children project sponsored by Food for the Hungry. They were able to see how the fleece blankets, which so many of you helped buy two years ago, make such a massive difference and become a prized possession in the poorest households. At the same time as the Ethiopia visit was taking place, James and Lucy Entwisle along with Anita and Hannah Creech were visiting our friends at the Agape Church and School in Hyderabad, India. The work there is going from strength to strength under the guidance of Sekkar and Chandra



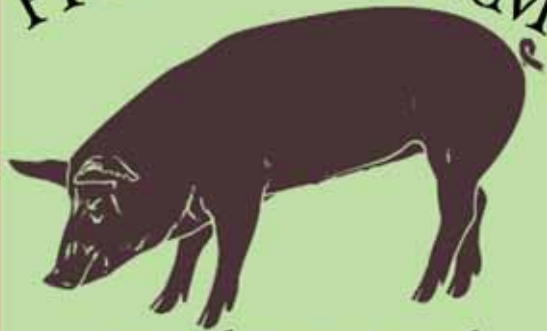
whom many of you have met on their visits to Speen over the years. The school is now providing education and meals for over 200 children every day who otherwise would be forced into back breaking jobs at an early age to support their families. The support which the villagers have and continue to show for the Agape project is awesome and is making a huge difference to vulnerable young people.

Carol Turner, our link missionary in Afghanistan, is retiring and Carol visited Speen in February to give us an update on her work with the oppressed Hazara women for whom she has provided a vital service of pre and post natal care which would ordinarily be denied to them. Carol is a remarkable woman who has done amazing work in the name of Jesus while exposing herself fearlessly to immense risks that we simply cannot contemplate. We wish Carol a very happy retirement and we are pleased to report that we shall be maintaining our link with the people of Afghanistan by supporting Becky Hembury in Kabul.

Please keep up to date with the life of Speen church by visiting our newly launched website [www.speenchurch.org](http://www.speenchurch.org).

*Alastair Blundell*  
01494 488509

# PICKELS FARM



*British Rare Breed  
Succulent Pork*

*'How Pork should taste'*

*Also Lamb, Venison & Game in season  
and much more...*

*We shall look forward to meeting you  
on Thurs Fri or Sat between 9:30 - 5:00  
at Pickels Farm, Lee Road,  
Saunderton Lee HP27 9NU  
(Nr. Golf Club)*

*Tel: 01844 345979*

## Nicki Thomas Web Design

**Creating bespoke websites  
for a  
wide range of businesses**

Visit [www.nickithomas.co.uk](http://www.nickithomas.co.uk)  
to find out more...

Hedgerows, Studridge Lane  
Speen, Princes Risborough  
HP27 0SA

Tel 01494 488665

Email [nickithomas@storecomput.co.uk](mailto:nickithomas@storecomput.co.uk)



Printers of Speen & North Dean News

**DESIGN, ARTWORK, PRINT**  
*all at*

8 Wycombe Industrial Mall  
West End Street  
High Wycombe  
Buckinghamshire HP11 2QY

**T: 01494 452266**

**F: 01494 452216**

**E: [mail@pkinprint.co.uk](mailto:mail@pkinprint.co.uk)**

**W: [www.pkinprint.co.uk](http://www.pkinprint.co.uk)**

Newsletters

Leaflets

Programmes

Brochures

Folders

Labels

Stationery

Carbonless

Instructions

**CONTACT US NEXT TIME YOU NEED A PRINT QUOTATION**  
if it's on paper we print it



Top Dogs Home from Home Boarding offers  
you peace of mind whilst you are away by  
looking after your dog in a loving home with  
one of our experienced dog carers

**For further information please contact**

**Debbie at Top Dogs**

**Telephone: 01494 488096**

**Mobile: 07887 674599**

**[www.topdogs-homeboarding.co.uk](http://www.topdogs-homeboarding.co.uk)**

Are you interested in joining our growing  
team of carers?

If so, please see our website for  
more information

# Speen Heritage Group

*The names and initials of the Speen men who were killed during WWI are listed in alphabetical order on a memorial plaque inside the chapel lych-gate. The Speen Heritage Group tried to discover more about those ten men.*

*As you will see, we were not completely successful - and we hope that you can make good the gaps in our knowledge. We are grateful to Sandra Clark for correcting one detail concerning our reference to Alice Dean. There was an Alice Dean who was the sister of Harry Dean, but the Alice Dean who wrote the leaflet about our village was the wife of William Dean, Harry's youngest brother.*

*We are listing the Speen casualties in chronological order. In the previous edition of the Speen & North Dean News we listed Harry Dean, who died on 25th May 1915, aged 25; Harry Burrows who died on 16th March 1916, aged 24; Harry Saunders who died on 23rd July 1916, aged 28. The next Speen man to be killed died in 1917.*

**W Gibbons.** William Gibbons was born in 1891 at "Hillock". In 1911, aged 20, he was living at "Grubbing Cottages" with his father, George (58) a farm labourer and mother, Kate (57). Both had been born in Speen. His elder brother, George, a farm labourer, was 23 and his sister, Nellie, was 17. William was employed as a "Car man on farm". His parents had been married for 35 years and his mother had borne 7 children: one had died; three - including Sidney (27) - were living elsewhere. William, a Private (No. 202370) was killed on the Somme on 28th February 1917. His body was never found. He is recorded twice on Lutyens' monumental Memorial to the Missing at Thiepval: once amongst the names of his comrades of the 2nd Battalion of the Oxford and Bucks Light Infantry and also with those of the 4th Battalion. This, correctly, records that he was



*Lutyens' Memorial to the Missing of the Somme*

a member of the one but was temporarily attached to the other when he lost his life. He was 26 years old.

**S Gibbons.** Sidney Gibbons, William's elder brother, is sometimes shown as being born in 1884, sometimes in 1886. We have assumed that 1884 is correct because that tallies with the date of birth that he gave when he enlisted in the Army. He married Sarah Lovett (sometimes recorded as Sara ) in 1908 when he said he was 24 and she was 25. ( Conscription had been extended to include married men in May 1916.) Sarah appears on the 1901 census living with her parents and siblings at Highwood Bottom, which the census enumerator also describes as "Speen Bottom". In 1911, Sidney and Sarah were living in Speen. Sidney was a farm labourer; they had no children. Sidney Gibbons died on 9th June 1917, a Private (No. 23679) in the Oxford and Bucks Light Infantry. ( He was in the 6th Battalion. After the slaughter of 1916, the Army tried to keep brothers in the same Regiment but in different battalions - so they would be less likely to become casualties in the same engagement. ) Sidney was recorded as being 15 in 1901. If so, he would have been 31 in 1917. The Army records say he was 33; we think that is correct. He is buried at Etaples Military Cemetery. Etaples was a huge military conglomeration, near Boulogne, well away from the Front; it would appear that he was transported back to one of the many hospitals there but died from his wounds. 1917 was a black year for the Gibbons family.

**N C Simmonds.** It was extremely difficult to trace Norman Cyril Simmonds; he did not feature in any records relating to Speen. ( His name is misspelt in The Leaves of Time. ) Eventually we established that his father's second wife was Alice Wood. Alice was born, in Speen, in 1859. In 1901 she was living in "Woodbine Cottage" with her widowed father, John Wood, a boot maker, age 71. In 1903, when she was 44, she married John Thomas Simmonds, an evangelist, and became the step-mother of his three children: Charlotte (29), Norman Cyril (10) and Florence Muriel who was 9. Norman Cyril died on 4th October 1917. He was 25 years old and a Lance Corporal (No. 143191) in the Royal Engineers. He is buried near Dunkirk in the Zuydcoote Military Cemetery. In the autumn of 1917, two large medical centres were located at Zuydcoote so it is likely that he died of his wounds whilst in hospital. From his obituary we discovered that, when Norman Simmonds died, his father was the Pastor of the Baptist church in Loosely Row. Norman's memorial service was held in Speen and was taken by the Speen Pastor, A W Pay. Norman's father succeeded Mr Pay in 1919; the lych-gate and the Speen memorial plaque were put up during Mr Simmonds' tenancy.



*Edward Lester Janes, died 7th April 1918, aged 32*

**E L Janes.** In 1901, Edward Lester Janes (15) was an apprentice chair worker living in "The Plough" with his father, George (43) who was born in "Princes Risborough" and his mother, Emma, from Swindon, who was 42. (In all these records, we should treat "Princes Risborough" with caution; in many cases it could mean

"Speen". It certainly does in this instance. Edward was born in The Plough - as was his father, and his grandfather.) Edward's elder sister, Ethel was 21. His younger siblings were: Nelly (10); Elsie (6) and Millicent (2). Also in the house were George's mother, Ruth, a widow, (64) and Gladys (1) a "Grand daughter." When WWI broke out, Britain had a colossal Navy and a minuscule Army. To make up the manpower needed in the Trenches, an infantry Division was created from men who were serving in the Royal Navy. When Edward Lester was killed, on 7th April 1918, he was a Private in the 2nd battalion, Royal Marines Light Infantry. He died, aged 32, in the ferocious fighting for Aveluy Wood. His body was never found and so his name is inscribed on the Pozieres memorial to the missing. In 1907 he had married Lucy Burrows, the girl next door - and the elder sister of Harry Robert Burrows who was to die of meningitis in 1916. By the end of WWI, Lucy Janes was bringing up three little boys. She changed the name of her house, just off the Hampden Road, to Aveluy Cottage.

*Would you like to make any corrections or additions to these biographies? Do you have any photos - portraits, team photos - of these men? We will publish similar details of the three remaining casualties in later editions of the Speen and North Dean News:*

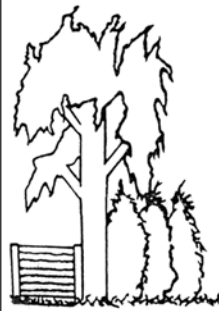
*Frank Randall  
John Rixon  
Artie Ralph Bristow*

*Would you like to check the text beforehand? Do you have any photos we could use? If so, please contact Clive Rainbow (01494 488658) or email [rainbows@speen.org.uk](mailto:rainbows@speen.org.uk).*

## C.G. Tree and Garden Services

### WORK UNDERTAKEN:

- Tree Surgery and Felling
- Fencing
- Hedge Cutting/Topping and Turfing
- Woodchips and Firewood for Sale
- Free Estimates
- Qualified Staff
- Fully Insured
- Seasoned Firewood



Phone

Chris Gant  
01494 562045

## Clickettyclack

**Your local Wool & Haberdashery Shop**  
**Lots of creative knitting & crochet ideas**  
**Yarn, patterns and tools galore**

Visitors welcome at  
Unit 11a Woodway, (Risborough Agricultural site)  
Between Princes Risborough and Lacey Green

Ample free parking - Arriva 300 Bus stops outside every 15 mins (ask for Windy Ridge)

Free drop in Knitting & Crochet Group 1st Saturday in the month 2.00 - 4.00pm. Bring your stitch problems to our clinic, work on your current project in peace or come and learn the basics!

**We look forward to seeing you soon**

Open Monday 12.00 - 4.30pm  
Tues - Fri 10.00am - 4.30pm  
Sat 10.00am - 1.00pm

Order online at [www.clickettyclack.co.uk](http://www.clickettyclack.co.uk)  
or ring us for Mail order information on 01844 273739

# The Talisker Whisky Atlantic Challenge Race: Rowing across the Atlantic

On the 17th of January this year three friends and I rowed our custom-built 29-foot rowing boat, *The Spinal Frontier*, into Port St Charles, Barbados, 41 days after leaving the other side of The Atlantic. Competing against 16 other crews, we had completed what is widely regarded as the world's toughest endurance race, rowing over 3,000 miles. We endured sixty-foot swells and a pounding from the odd monstrous rogue wave, conditions that resulted in seven of our fellow competitors dropping out in life-threatening circumstances.

Our crew, known as The Atlantic 4, departed from the Canary Islands on 5 December, a day late due to ferocious winds. The lead up to the race was like nothing I have ever experienced, a combination of frayed nerves, trepidation and excitement that infected all four of us. Our emotions caused serious disruption to sleep and our all-important calorie intake as we bulked up for the race. We anticipated losing up to three stone whilst at sea, so prior to departure our meals became something of a chore as we piled on the pounds. To help with last minute preparations and to ease some of the mental pressure of departure, my top supporters Mum and Dad joined us in La Gomera, and waved us off as we slowly disappeared over the horizon, my first lifetime adventure just beginning for real. (*"What, cycling 3000 miles unsupported in Africa doesn't count?"* Mum)

It was particularly difficult saying goodbye to our loved ones as we all knew there was a real risk of catastrophic failure. Despite these powerful emotions we were also impatient to push off from the safety of the harbour and begin the challenge we had been working toward for over a year.

As I look back now, the departure from La Gomera and indeed the race itself seems like a hazy dream, though there are a few experiences that remain crystal clear and that I will never forget.

During the first week we experienced some of the biggest seas the race organisers had ever seen, terrifying waves exceeding 70ft, causing unavoidable debilitating seasickness. We had prepared for this eventuality by taking strong anti-seasickness pills every four hours, unfortunately the medication was not quite strong enough for me and I succumbed to the inevitable and was sick regularly for the first fortnight. Due to the constant nausea I found it impossible to hold down the survival rations which we had packed and instead was forced to adapt to a diet of pork scratchings, peanut butter and Snickers bars. My improvised diet offers some explanation as to why I only lost two of the



*The Atlantic 4 arrive in Barbados*

three stone I put on before leaving. I was disappointed to arrive in Barbados and realise that I had somehow held on to a significant part of the so called "survival blubber" I had so slavishly put on during the build-up to the race.

The days at sea were torturously long, we became automatons as we adapted to just 2 hours for ablutions, calorie intake and sleep, followed by 2 hours rowing, 24 hours a day. Our routine resulted in us experiencing bizarre hallucinations and narcolepsy. Living in such close proximity with three other large and increasingly feral men made life on board *The Spinal Frontier* increasingly uncomfortable: conditions were hot, damp, sticky and very stinky within the confines of our miniscule cabin, the only place of refuge.

Despite the constant mental and physical challenges of the row, I did experience some of the happiest and most memorable moments of my life. These include swimming with vast shoals of mahi mahi or dolphin fish and the blessed relief of a torrential downpour of fresh Atlantic rain that allowed us to enjoy a rare wash on deck. It was the scarcity of these high points that made them so poignant. As you may guess, the greatest and most emotional moment of all was the first smell and sight of land, the beautiful island of Barbados.

I feel tremendously proud of our achievement and that so far we have raised very nearly £260,000 for Spinal Research, making the adventure so special and worthwhile. We will be selling the boat and this should raise a further £30,000 or so, any takers?

The tremendous amount of money raised would not have been possible without the generous support of this community and our friends and family. Thank you to all of those who so kindly donated.

The experience was one that will live with me forever.

If you wish to donate through The Atlantic 4 to Spinal Research and have not done so yet you can do so at [www.justgiving.com/theatlantic4](http://www.justgiving.com/theatlantic4)

*Greg Symondson*

# County Council News - April 2012



## HS2

The decision by the Coalition Government to go ahead with HS2 has been condemned by County Council leader Martin Tett. Martin, backed by Council Resolutions continues to play a vital role in opposing the scheme. I agree with Martin and have supported the Council's stance that to spend £32 billion on a scheme, that many say will not deliver additional prosperity for the country, cannot be justified.

The Government decision has triggered a response from the 31M group to seek a judicial review of the project which opens the way for a hearing into the claim to be heard later this year should the High Court accept that there is a case to be argued.

## Health

The enactment of the Health Care Bill in March now means that the way Health is delivered, both for the individual and the public, will change in April 2013. Although there should be very little change experienced by patients and public in the care provided, it does mean significant change for the processes of commissioning the care we all receive. GP's will now be an integral part of the health commissioning process which opens the way to access to private care providers.

The Primary Care Trust (PCT) will cease to exist and those working for it will either be subsumed into the County Council for the delivery of public health or move to other organisations with responsibility for medical care.

The process of transition is already under way with the establishment of the Health and Wellbeing Board. This board consists of County and District council representatives together with GPs and patient representatives who are charged with developing strategy for Buckinghamshire health care. A consultation by the Board is under way which asks the public to provide their views on the priorities for health provision. You can find more about the proposals and the work of the board by going to [www.buckscc.gov.uk/healthandwellbeingboard](http://www.buckscc.gov.uk/healthandwellbeingboard).

The County Council together with the NHS and PCT have launched the 5 Ways to Wellbeing campaign. The campaign aims to promote how five simple actions can help people of all abilities feel better and get more out of life. The five actions focus on 'Connecting' with others, being 'Active' and 'Aware', keep 'Learning', and 'Giving' back to the community. The programme was launched at an event in the Burnham library

where people suffering from memory loss came together to sing songs which hold special memories for them and in so doing help them to engage in community activity. I am sure we all know those who would benefit from this type of help. If you do and would like to know more then contact [www.buckinghamshire.nhs.uk/wellbeing](http://www.buckinghamshire.nhs.uk/wellbeing)

## Fire and Rescue

The subject of the location of the Fire Control Room has been in the news recently. As a member of the Fire Authority I can say that any decision to relocate this facility will not be taken lightly and only when assurances are given that there will be no impact on the ability of the Authority to deliver the front line services.

The Chief Fire Officer has advised that this will be the case and also made the point that there will be no closures of Fire Stations so retaining the best local knowledge of the area. If you would like to know more please use the link: <http://www.bucksfire.gov.uk/BucksFire/News/>

## Live 'On Line' Screening

A new innovation, aimed bringing more accountability to the Council's work, is the ability to watch the Scrutiny and Cabinet sessions on line. Directions to the appropriate web page can be found on [www.buckscc.gov.uk/bcc/overview\\_and\\_scrutiny](http://www.buckscc.gov.uk/bcc/overview_and_scrutiny) or by contacting Overview and Scrutiny, Room G9, County Hall, Walton Street, Aylesbury, HP20 1AU, email [scrutiny@buckscc.gov.uk](mailto:scrutiny@buckscc.gov.uk)

If you have any concerns regarding County Council issues or have noticed areas where action is needed then please let me know and I will do what I can to help.

**Paul Rogerson**  
County Councillor  
01494 488315  
[progerson@buckscc.gov.uk](mailto:progerson@buckscc.gov.uk)

# District Council & HS2 News - April 2012



## District Council News

The most significant recent development affecting the District is the publication on March 27th by Government of the new National Planning Policy Framework (NPPF) which replaces over 1,000 pages of planning policy with a 50-page framework, at the heart of which is the new 'presumption in favour of sustainable development'.

It will take some time to fully understand the

*Continued on page 33 . . .*

for simply beautiful gardens



garden design  
construction  
planting  
after-care

[www.alchemille.co.uk](http://www.alchemille.co.uk)

01494 488115 / 07909 936718

## Speen Playing Fields

The Playing Fields were happy to enjoy another good year with all major events being extremely well supported. The Fun day, The Fete, The Festival the Bonfire night, the Christmas tree lighting as well as the special Bike Park event were all huge successes; bringing much joy and hilarity to the village. Many thanks to all those who have given so much of their free time for the benefit of others, to make these events the success they are.

This year we have another ambitious programme and we have to keep our fields in good condition. The running cost of this alone is about £6000 per year, plus any other projects for which we want to raise funds. Last year we were pleased to help the pre school upgrade the under 5's play area with a wooden fort and slide, this year we would like to do something for our teenagers, by upgrading the Bike Park in Ridgley's Field. We are looking to incorporate a scooter and skateboard Bowl/ Pipe, below ground level in the existing hole at the far end of the Park. This is to encourage our teenagers off the road, which is at present extremely dangerous. We will, of course, consult with those neighbouring the park at the design stage of the project to ensure that we minimise the noise and agree ground rules for hours of use.

Regarding Health and Safety, we would remind villagers that the Playing Field is strictly a no dog area (even on lead) and whilst we do still allow dogs on Ridgley's field, this is also a children's play area and we therefore ask all dog walkers to ensure that any mess is scooped up and taken home. None of the bins in the fields are for dog poop; we have to clear them, a job which is made particularly unpleasant by those who continue to dump in them. So please Scoop and Take Away. We have had a number of requests from Villagers to use the Marquee on the Playing Fields for private events and this year we have agreed to a trial of 2 parties on consecutive Saturday evenings, the 25th August and 1st September. These are subject to strict conditions of hire with donations going to the Playing Fields and Marquee funds.

In addition this year we have the following events planned:

5th June Diamond Jubilee Tea Party  
15/16th June FunDay  
14/15th July Fete and SSG Craft Fair  
3rd November Bonfire Night

At the risk of singling out a few individuals on our committee, I would like to thank Andy

Thompson, who stepped down as Chairman of SPF after almost 4 years in the job, for all his work and leadership; he has agreed to continue as a Trustee. Peter Cooper stays on as treasurer this year but unfortunately Kay Knight is looking to relinquish the post of Secretary, due to pressure of proper work and family. Kay has done a great job for us and has agreed to carry on as the backbone of our organisation until we find her replacement. So if anybody out there would like to serve as Secretary or as a Trustee of the Playing Fields, we are looking for succession.

Finally I would like to remind the Village that we organise several work parties during the course of the year, these are totally reliant on volunteers helping to maintain the fields and only take up a Saturday morning every few months. It is a great way to help, in a manageable way, and we will make you very welcome. By the time you receive this our April work party will have been and gone, but watch out in the village messenger for the next "Date on the Field".

*Tony Bobroff*  
488688

## Speen WI Report

Our Annual Meeting was in November when we had a change of President from Christine Oliver to Jean Elder and enjoyed a pot luck finger buffet supper at the end of proceedings. Our speaker for December was, unfortunately, unable to come so with the help of some mulled wine, we made our own entertainment with quizzes and various comic monologues, a nice present at the end and some lovely refreshments made by the committee. For the January meeting Alice Crossley told us about her visit to Morocco, climbing the Atlas mountains and Emily Radforth gave a good account, with slides, of her trip to Swaziland and helping to paint an orphanage. Mr Brian Clews came in February to talk, with slides, about the birds in our garden. His enthusiasm was infectious and I, for one, was pleasantly surprised that he could tell me anything more about the birds in my garden. Last, but not least, Mr E Dixon talked in March, on Women on the Home Front during World War I.

Our next meetings are our birthday party in April; Discussion of Resolutions in May, Mr Smith talking about The Welsh Cattle Drovers on 3rd May and Georgina, The Phenomenal Duchess with Mrs S Marshall.

We would be pleased to see any new members.

*Barbara Collett*  
488348

# Speen Pre-School

## Snowmen, Dragons and Pancakes

As the sun shines it seems a long time ago that our pre-school children spent an excited morning building snowmen on the Playing Field. Other highlights of this term include celebrating Chinese New Year by making lanterns and a huge dragon, pancake mixing and racing and enjoying Welsh cakes and daffodils on St David's Day. More recently we have celebrated Book Week with parents and grandparents contributing to story time and planted sunflowers, anticipating whose will be the tallest come summer.

Three fundraising events, a children's disco, kids' nearly new sale and the traditional Easter egg hunt have raised almost £500 this term. This will fund a large replacement sandpit that will complete the Under 5's play area at long last. Thanks to all who with both time and money have contributed to this area over the past few years.

Recently we received a grant from Bucks County Council to send one of our staff members on a Forest School leadership course. This will enable us to develop more of a Forest School ethos. Our aim is to spend more time using the outdoors as a learning environment, which has been proven to help build self-confidence and teamwork. It is early days and know doubt you will hear more about this exciting development in the future.

As the term closes we visited the chapel for a service with the children in a variety of spring animal disguises singing songs. We said good-bye to three children as they leave us for Speen School, whilst we prepare to welcome three new children to pre-school next term.

We take children from two upwards. If you would like to visit the pre-school or put your child's name down please get in touch. We do have some vacancies, particularly from September onwards.

**Clare Morris**  
*Chair, Speen Pre-school*  
**488553**

*... continued from page 30*

implications of the NPPF, however there is a clear requirement for a thorough Local Area Plan, which will be crucial in determining planning policy and decision-making in the District. WDC already has a Core Strategy and Local Plan which been kept up to date, but which will need to be reviewed and revised in light of the new legislation over the coming months.

Further updates will be provided as the work to revise the Local Plan develops.

**Mel Foster**  
*District Councillor*  
**Lacey Green, Speen & The Hampdens**  
**01494 488905**  
**mel\_foster@wycombe.gov.uk**

## HS2 Update

Following the distressing news that the Government has decided to proceed with HS2 our attention, and that of the Federation of Actions Groups against High Speed 2 (AGAHST) has been to consider the most effective way to take the fight to the next stage.

You will see from Paul Rogerson's update that the 51M group of Local Councils has formally sought a judicial review of the Government's decision based on the failings of the business case. As a parallel exercise, 2 further Judicial Review requests have been submitted by the High Speed 2 Action Alliance (HS2AA), an organisation we have supported since its inception, based on issues with the environmental case for HS2 and also the compensation arrangements. Details have also just been released of a 4th Judicial Review,

submitted by an organisation called Heathrow Hub, based on the choice of route.

These reviews are evidence of the strength of opinion against HS2 and represent a powerful challenge to the Government's case. It is likely that all 4 review requests will be considered at the same time, and if the requests are successful, proceedings would commence in a matter of months. More details will be provided when the determination of which Judicial Reviews will be taken forward has been made.

Also in recent development, the latest figures issued by HS2 have revised down the economic benefits for the fourth time - suggesting the scheme will barely, if ever, break even. Originally the scheme was forecast to bring £2.40 of benefit for every pound invested. The revised benefit-cost ratio (BCR) is 1.2-1, which means that further pressure can be brought to bear on Government to abandon this deeply-flawed proposal.

Finally, on behalf of the Speen Area Action Group, I would like to thank everyone who has so far contributed to our fund-raising initiative. Your money is used to support the national groups fighting HS2 and provide contributions to specific campaigns, such as the HS2AA Environmental JR.

**Mel Foster**  
*Chair*  
**Speen Area Action Group against High Speed 2**  
**01494 488670**  
**hs2@speenbucks.org.uk**

Bucks County Council - Member for Lacey Green	Paul Rogerson	488315
Hughenden Parish Council - Chairman	Tony Konieczny	715296
Lacey Green Parish Council - Chairman	Cathryn Davies	01844 342800
Lacey Green Parish Council - Councillor for Speen Ward	Roger Craft	488343
North Dean Village Hall - Bookings Secretary	Megan Chinn	563074
North Dean Village Hall - Chairman	Andrew Howard	562775
North Dean Village Hall - Secretary	Robin Hughes	07920 748580
Piggotts 7 '48' Musical Evenings	Nick Wheeler-Robinson	562167
Police Contact	PCSO Lisa Roberts	0845 850 5505
Riding for the Disabled	Gloria Holmes	488420
Speen & North Dean Good Neighbours	Christine Oliver	488409
Speen & North Dean Guides	Pauline Hall	488372
Speen & North Dean News - advertising	Peter Cooper	488975
Speen & North Dean News - Chair	Gloria Holmes	488420
Speen & North Dean Toddler Group	Helen Davies	489847
Speen Baptist Church	James Entwisle	488875
Speen Festival - Secretary	Sue Taylor	488168
Speen Fete - Chair	Amanda Dobbs	488887
Speen Fete - Secretary	Nicki Pitt	488713
Speen Marquee	John Holmes	488420
Speen Playing Fields Chairman	Tony Bobroff	488688
Speen Pre-School - Chair	Clare Morris	488553
Speen School - Head	Denise Nayna	488321
Speen School PTA	Debbie O'Brien	488734
Speen Stores	Alison Templeman	488258
Speen Tennis Court - Secretary	Cherry Seekins	488355
Speen Village Hall - Bookings	Sue Taylor	488500
Speen Village Hall - Chairman	Bill Groves	488180
Speen WI - Secretary	Barbara Collett	488348
The Speen Group (was Speen Supporters Group)	Diana Summers	488344
Wycombe District Council - Member for Lacey Green & Hampdens	Mel Foster	488905

# BEECHDEAN

## Farmhouse Dairy Ice Cream



## Coffee Shop

Pick up your ice cream and  
chill out this summer at the  
Beechdean coffee shop

**Opening hours:**  
**Monday to Friday 10:00am to 4:00pm**



*You can also find Beechdean in:*



**Waitrose**



**[www.beechdean.co.uk](http://www.beechdean.co.uk)**



Local, regional, national and international specialists in property marketing



Britain's largest and finest selection of up-market property



Britain's fastest growing brand of estate agents

Dedicated 5 Star service delivered by experienced local property experts

Perfect property presentation experience the difference of our lifestyle animated approach to selling property



World class marketing expertise

[www.fineandcountry.com](http://www.fineandcountry.com)

Fine & Country, the award winning distinctive and character homes brand are delighted to announce the opening of their latest office in Hazlemere. The highly visible offices at 1-3 Penn Road are already marketing some of the areas best property but more is urgently required for a growing list of applicants from around the world. **Call in, ring 01494 711677 or email [hazlemere@fineandcountry.com](mailto:hazlemere@fineandcountry.com) for your free market appraisal today!**

So, when you are thinking of moving, make sure you are using the **RIGHT** agent

- National and international award winning presentation and property marketing
- The widest possible market coverage
- Powerful network of 300 offices around the world
- Impressive international property centre in Park Lane
- A superb range of bespoke marketing literature and magazines
- Dedicated property professionals with local knowledge and experience
- Extensive advertising in both local and national press
- Competitive in every sense